

# Health Care Facilities

ANDOVER TWP

SUSSEX

## Legend

- Counties
- ANDOVER TWP

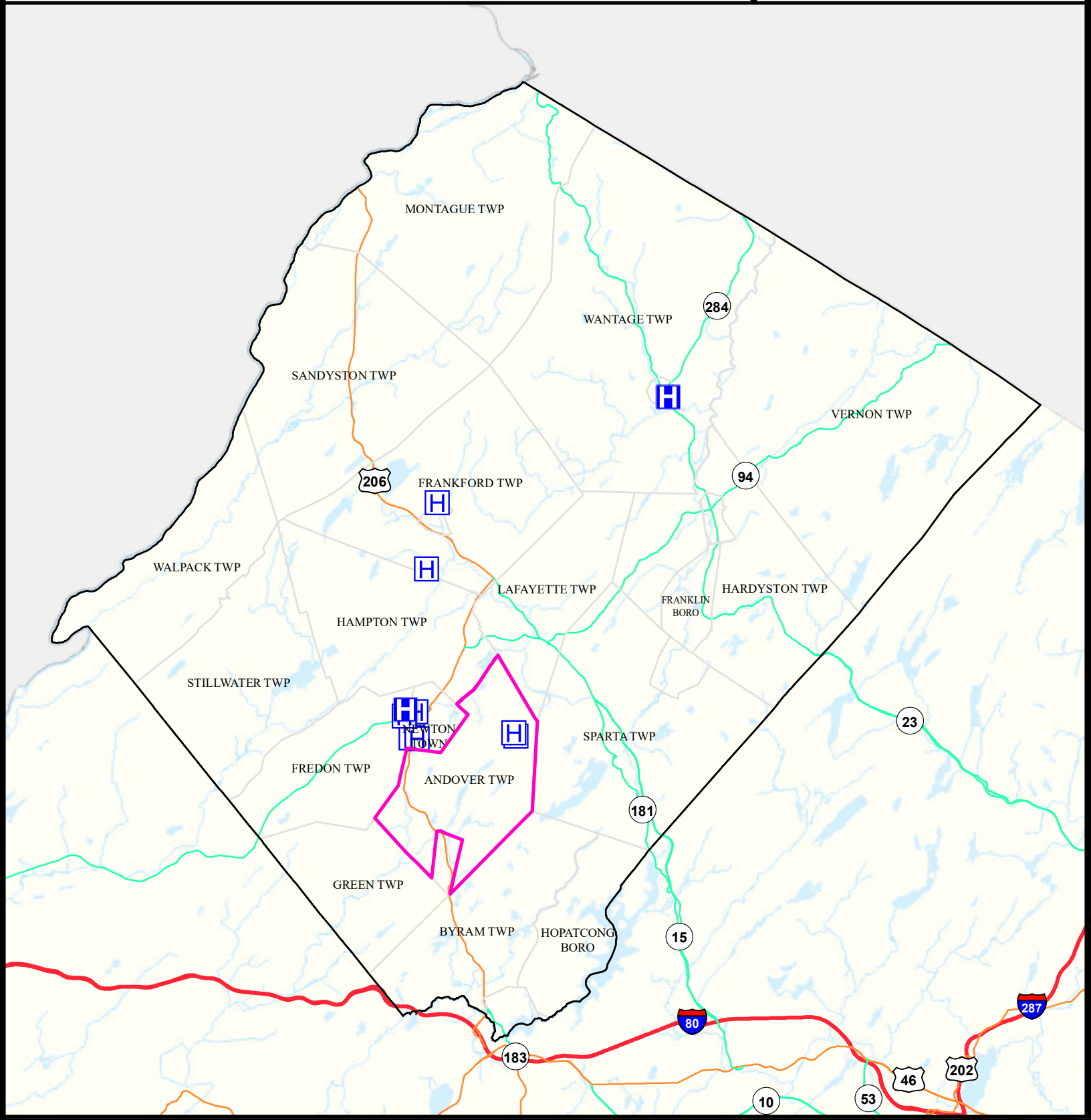
- Hospitals
- Nursing Homes
- Municipalities

N

Date: 9/26/2022

024

Miles





# Air Cancer Risk

ANDOVER TWP

SUSSEX

## Legend

### Risk per Million

61 - 87

88 - 108

109 - 127

128 - 145

146 - 167

168 - 193

194 - 243

244 - 283

284 - 351

352 - 604

Counties

ANDOVER TWP

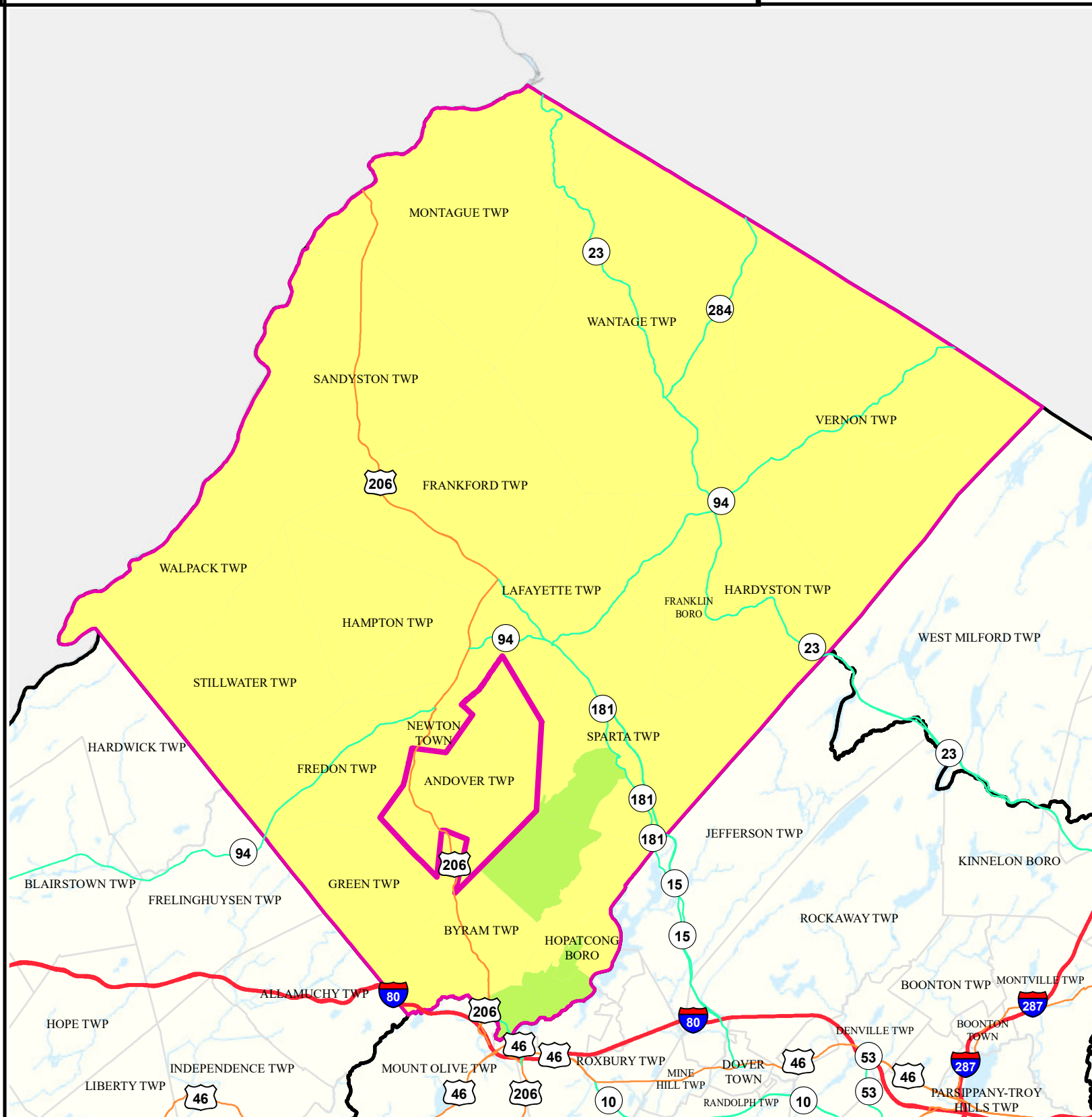


Date: 9/28/2022

0 1.75 3.5



Miles





# Air Non Cancer

ANDOVER TWP

SUSSEX

## Legend

Combined Hazard Index



2.01 - 3.00



0.75 - 1.00



3.01 - 4.00



1.01 - 2.00



4.01 - 8.09



Counties



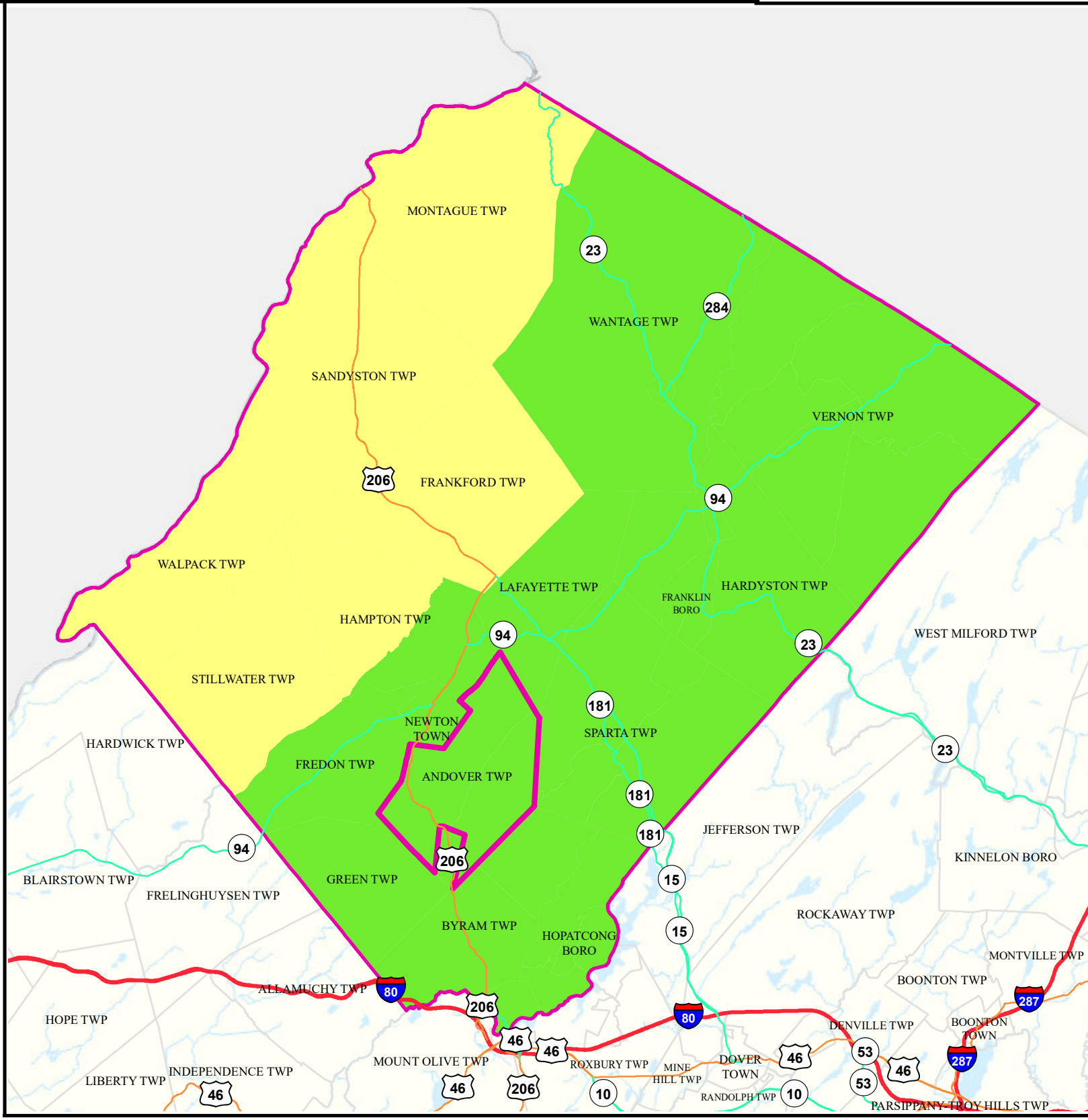
ANDOVER TWP



Date: 9/28/2022

0 2 4

Miles





# Air Quality Index (AQI)

ANDOVER TWP

SUSSEX

## Legend

 Municipalities

 ANDOVER TWP

## Average AQI Days

 0 - 1

 1.5 - 3

 3.5 - 6.5

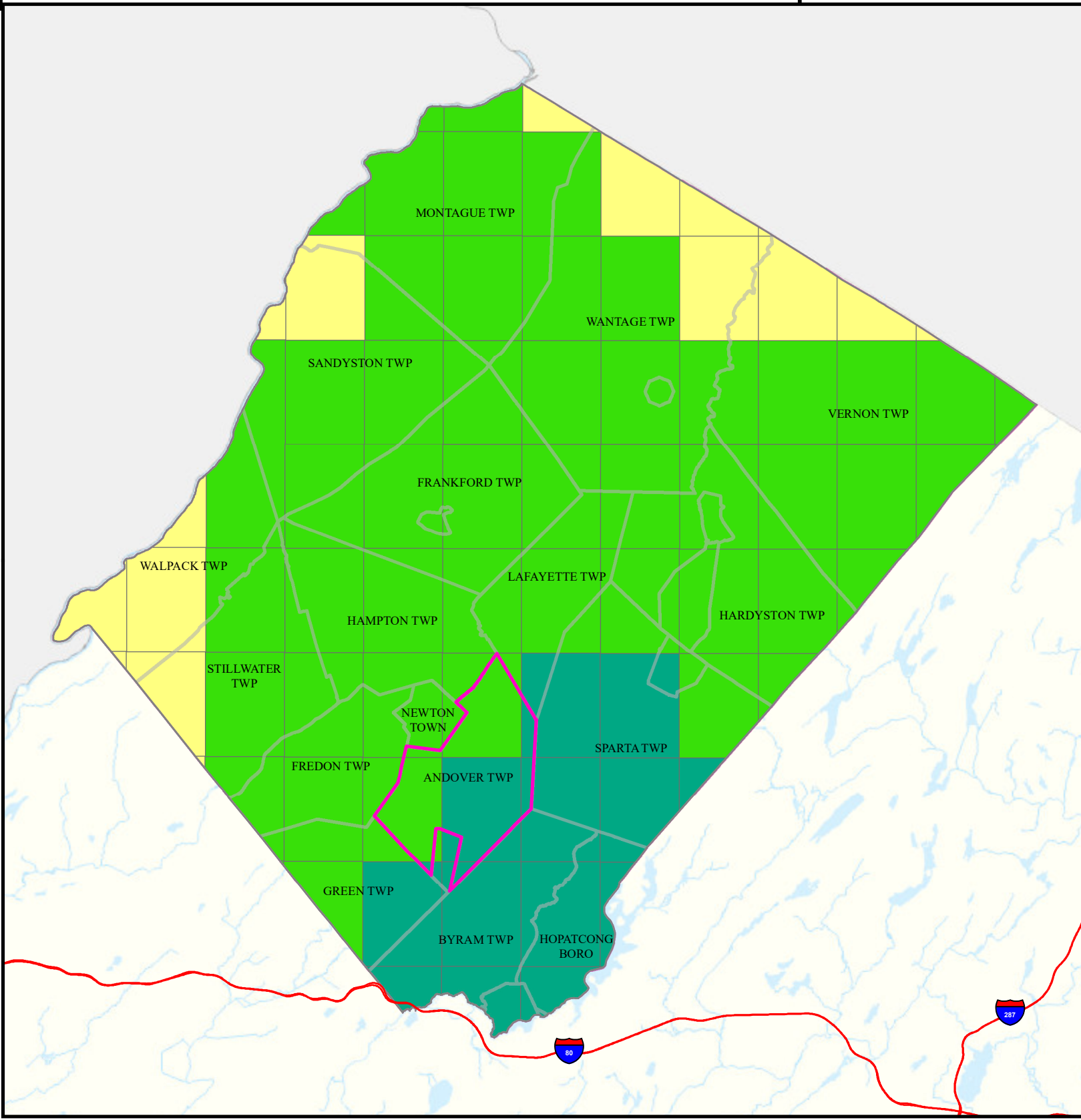
 7 - 12

Air Quality Index (AQI)  
Days above 100 (3 yr Avg)  
2018 to 2020



0 2 4 Miles

Date: 4/18/2022





# Community Drinking Water

ANDOVER TWP

SUSSEX

## Legend

- Counties
- ANDOVER TWP
- Municipalities

MCL and TT Violations  
and AL Exceedances

0

1 - 5

6 - 10

11 - 15

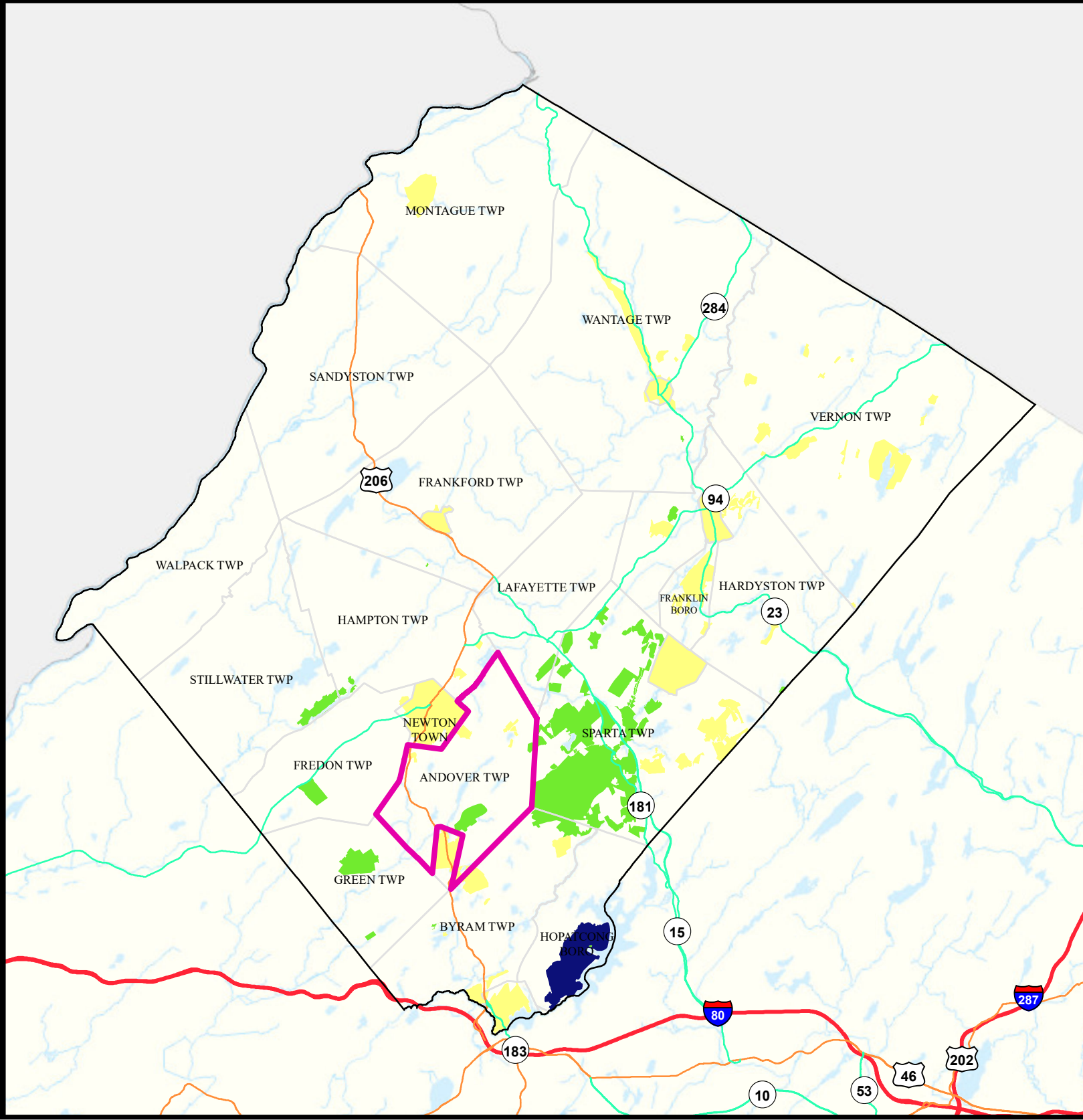
16 - 30



Date: 9/27/2022

0 2 4

Miles





# Ground Water/Soil

**ANDOVER TWP**

**SUSSEX**

## Legend

- Counties
- Municipalities
- ANDOVER TWP
- Deed Notice Areas
- Groundwater Contamination Areas (CKE)
- Groundwater Contamination Areas (CEA)

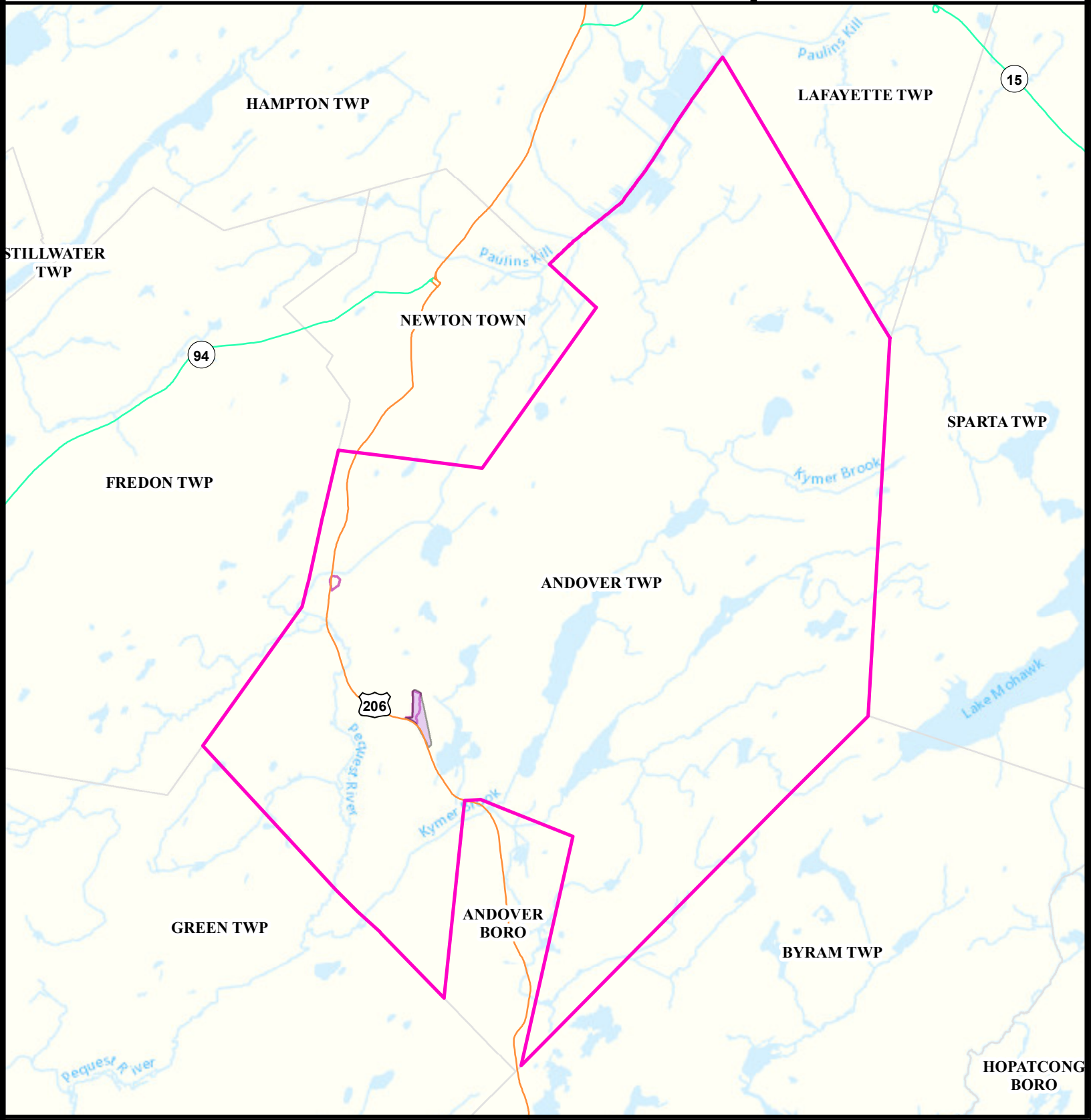


Date: 5/25/2022

0 0.425 0.85



Miles





# Surface Water Quality

ANDOVER TWP

SUSSEX

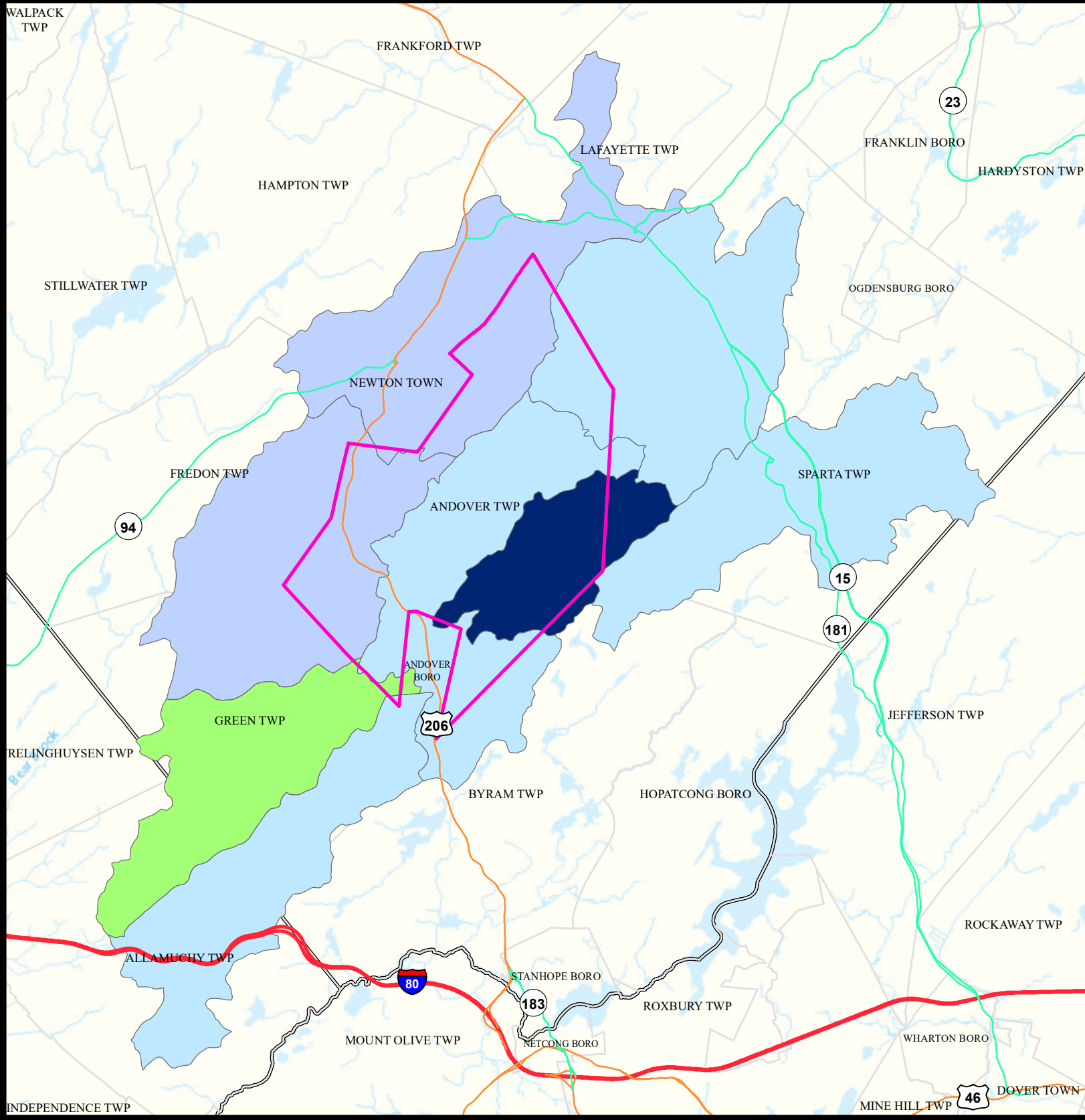
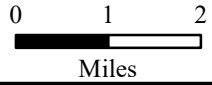
## Legend

- Counties
- Municipalities
- ANDOVER TWP

Impaired (Percent)		20	40	66.
NA		25	50	75
0		33.	60	80
				100



Date: 9/26/2022







## Surface Water Quality

## SUSSEX COUNTY Andover Township

### What is a Designated Use?

New Jersey's [Surface Water Quality Standards \(SWQS\)](#) establish the designated uses of the State's surface waters, classify surface waters based on those uses, and specify the water quality criteria and other policies necessary to attain those uses. Designated uses include water supply for drinking, agriculture and industrial uses, fish consumption, shellfish resources, propagation of fish and wildlife, and recreation.

The table below show the designated use information for your municipality. For more information on Surface Water Quality, see the Healthy Community Planning Report for this municipality.

AU_name	Aquatic_General	Aquatic_Trout	Water_Supply	Recreation	Shellfish	Fish_Consumption
Sparta Junction tribs	Non Attaining	Non Attaining	Attaining	Insufficient Data	NA	Insufficient Data
New Wawayanda Lake/Andover Pond trib	Non Attaining	Insufficient Data	Attaining	Insufficient Data	NA	Non Attaining
Pequest R (above Brighton)	Non Attaining	Non Attaining	Attaining	Non Attaining	NA	Insufficient Data
Trout Brook / Lake Tranquility	Non Attaining	Insufficient Data	Attaining	Insufficient Data	NA	Non Attaining
Pequest R (Trout Brook to Brighton)	Non Attaining	Attaining	Attaining	Non Attaining	NA	Insufficient Data
Wallkill R / Lake Mohawk(above Sparta Sta)	Attaining	Insufficient Data	Non Attaining	Non Attaining	NA	Insufficient Data
Lake Lenape trib	Insufficient Data	Non Attaining	Insufficient Data	Insufficient Data	NA	Insufficient Data
Paulins Kill (above Rt 15)	Non Attaining	Non Attaining	Attaining	Non Attaining	NA	Insufficient Data



# Flooding (Urban Land Cover)

ANDOVER TWP

SUSSEX

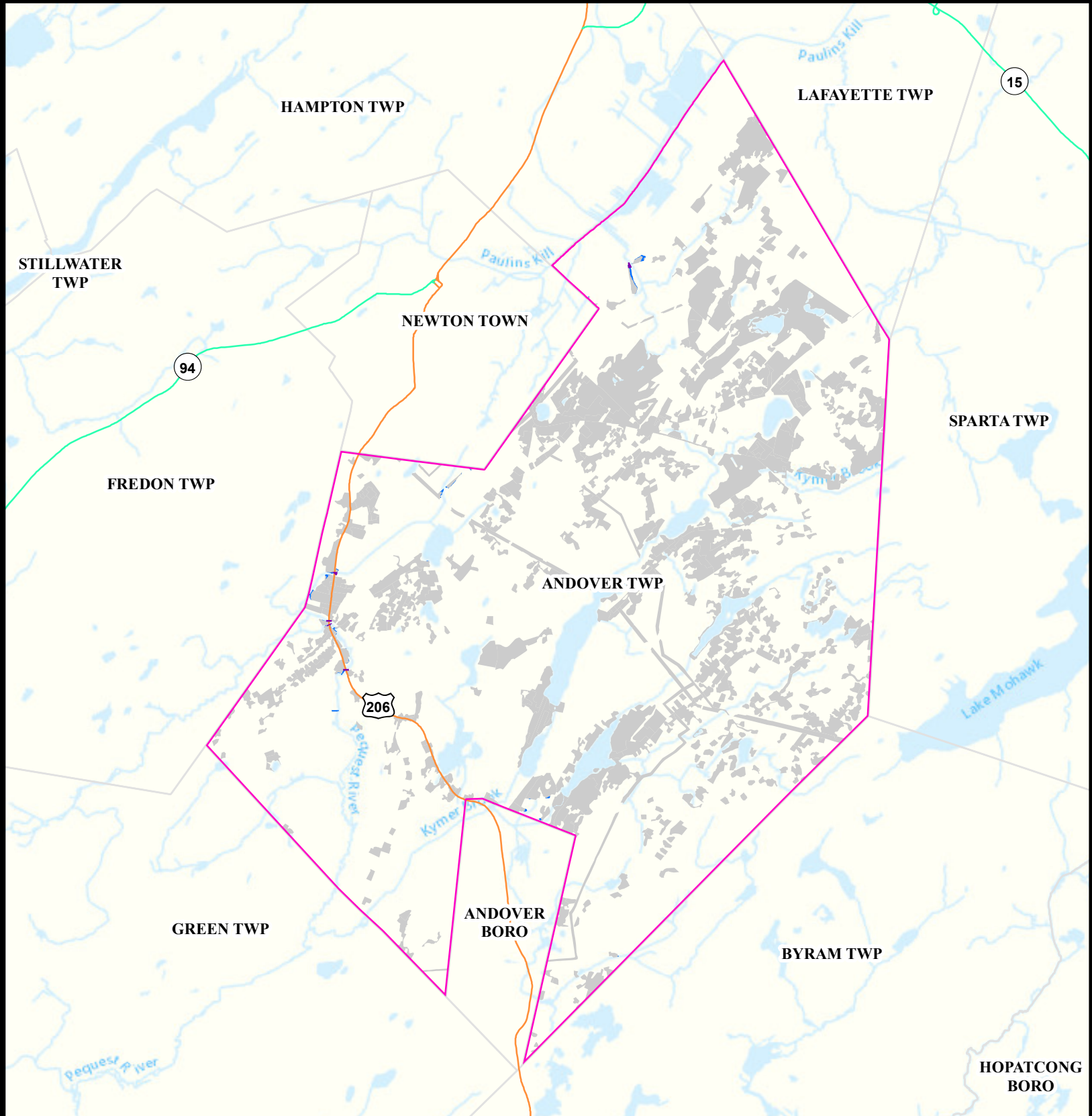
## Legend

- Counties
- ANDOVER TWP
- Municipalities

- Urban Land
- Urban Land Flooded
- Toll Road
- Interstate
- US Highway
- State Highway
- Impacted Roads

Impacted roads show only county level or higher routes in flooding areas.

N  
Date: 4/13/2022  
0 0.475 0.95  
Miles





# Air Permit Sources

ANDOVER TWP

SUSSEX

## Legend

## Facility Type

-  Counties
-  ANDOVER TWP

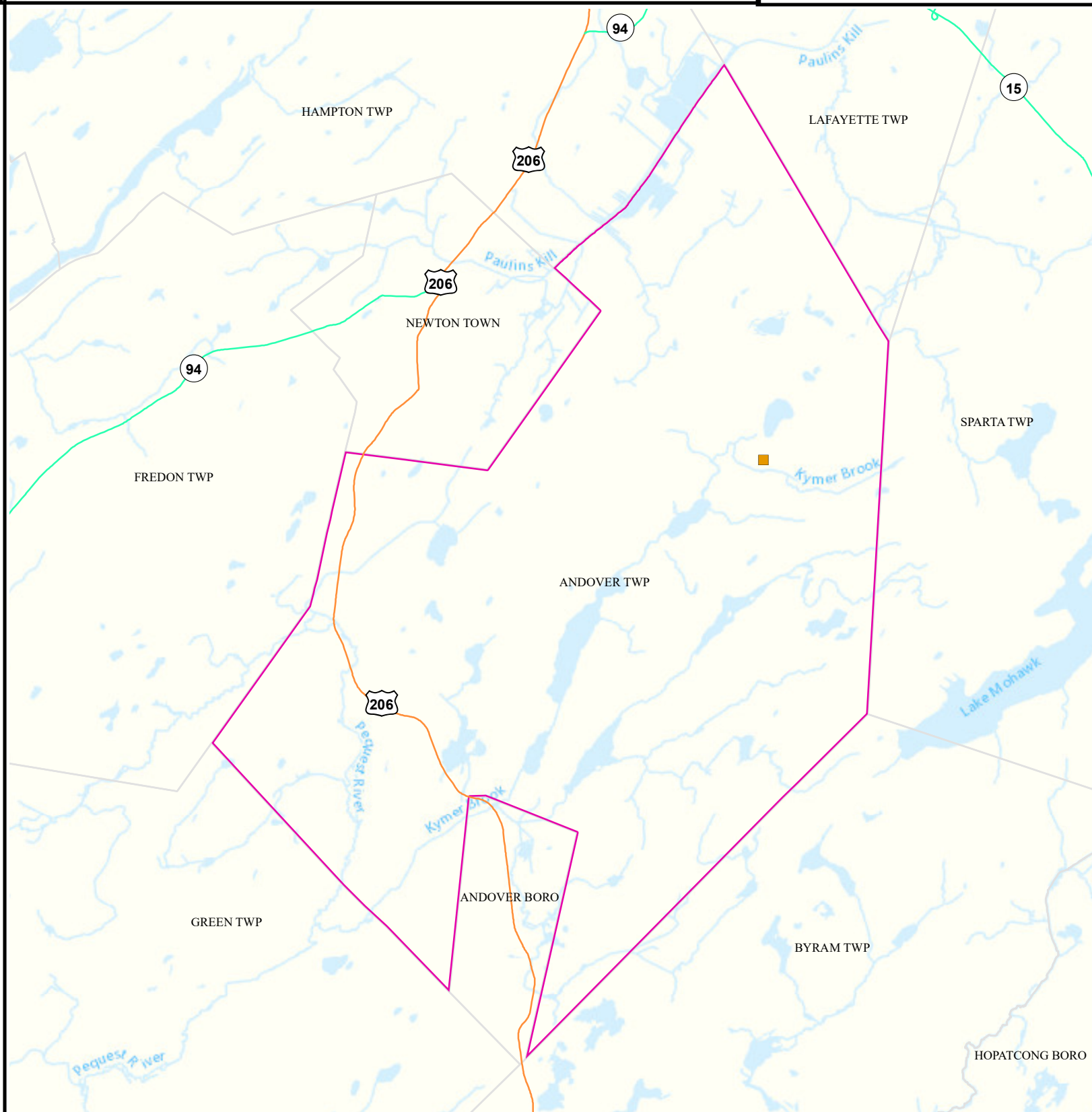
-  Major
-  Minor



Date: 4/12/2022

0 0.5 1

Miles





# Contaminated Sites

ANDOVER TWP

SUSSEX

## Legend

- Counties
- ANDOVER TWP
- Municipalities

Known Contaminated Sites

Density Weighting

- 0
- 1
- 2
- 3
- Other

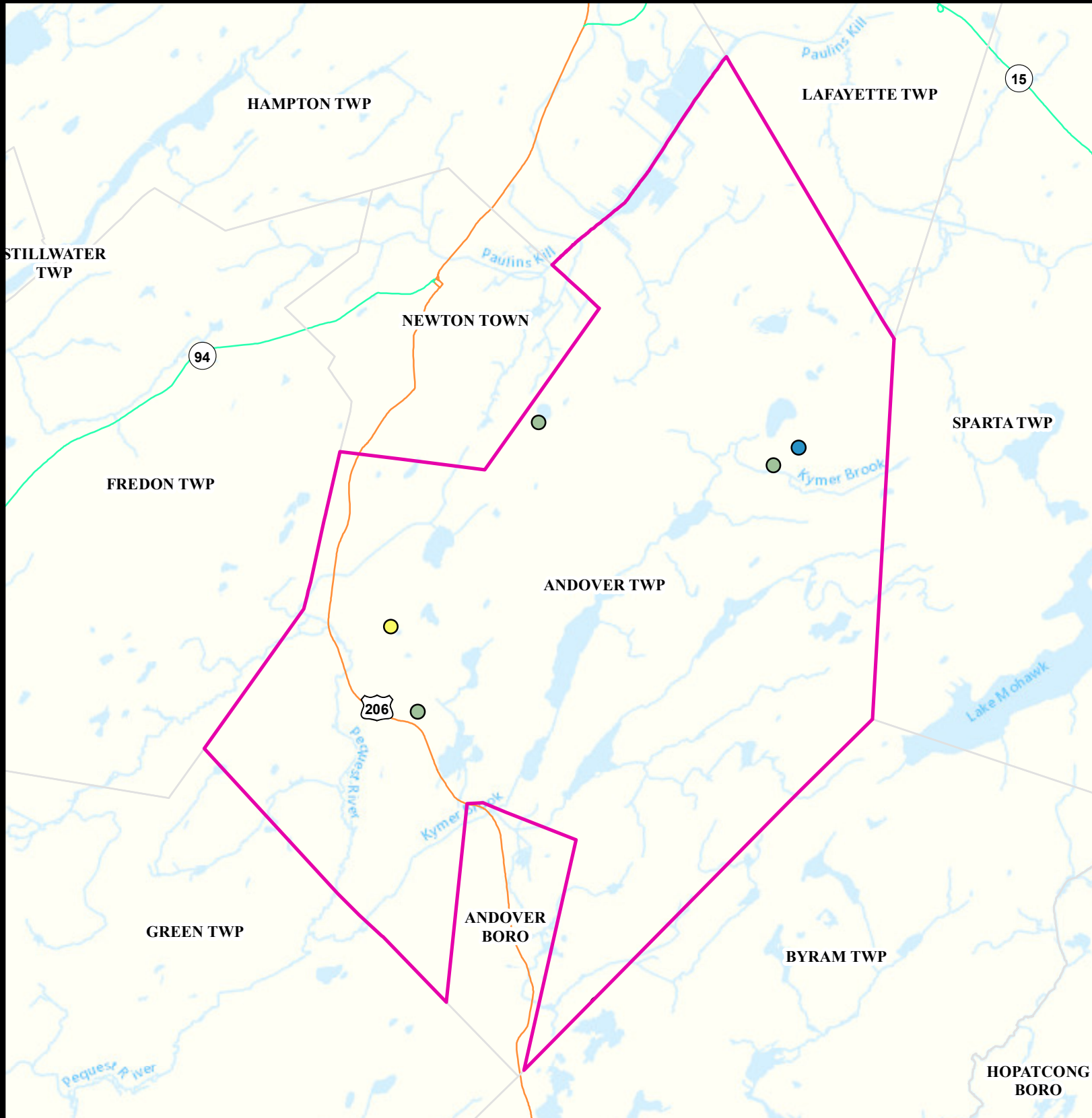


Date: 5/25/2022

0 0.425 0.85



Miles





# Scrap Metal Facilities

ANDOVER TWP

SUSSEX

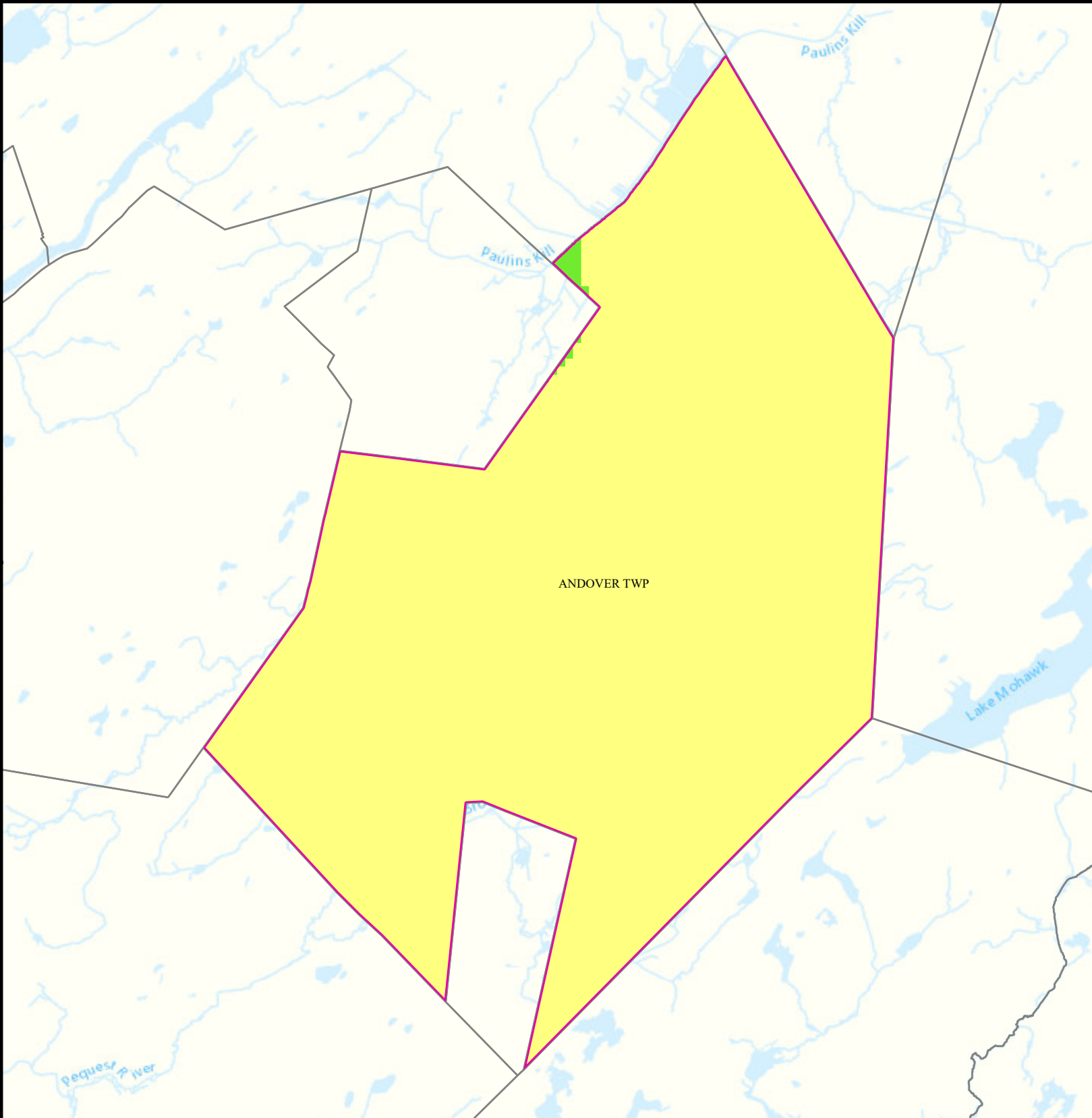
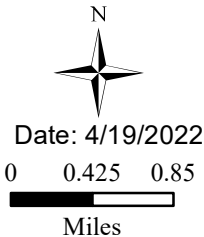
## Legend

- Municipalities
- ANDOVER TWP
- Scrap Metal Facility

## Sites Per Square Mile

- |            |           |
|------------|-----------|
| 0 - 0.29   | 2.3 - 4.4 |
| 0.30 - 1.1 | 4.5 - 8.3 |
| 1.2 - 2.2  |           |

Scrap Metal Processing  
Sites per Sq Mile  
2022





# Open Space

ANDOVER TWP


SUSSEX

## Legend

 Counties

 ANDOVER TWP

 Open Space

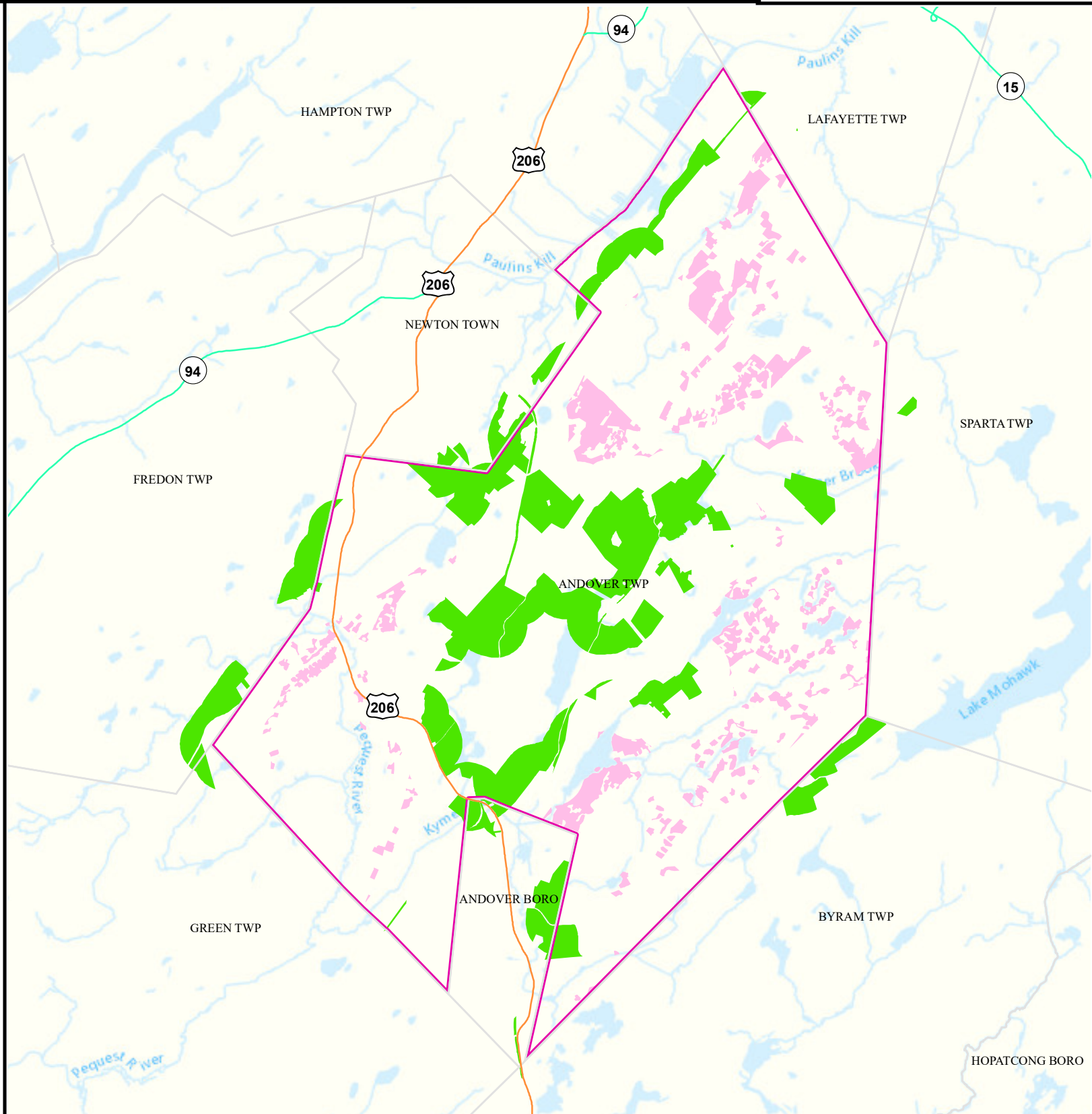
 Residential Population  
> 1/4 Mile from Open Space



Date: 9/27/2022

0 0.5 1

Miles





# Low Birth Weight

**Andover Twp**

**Sussex**

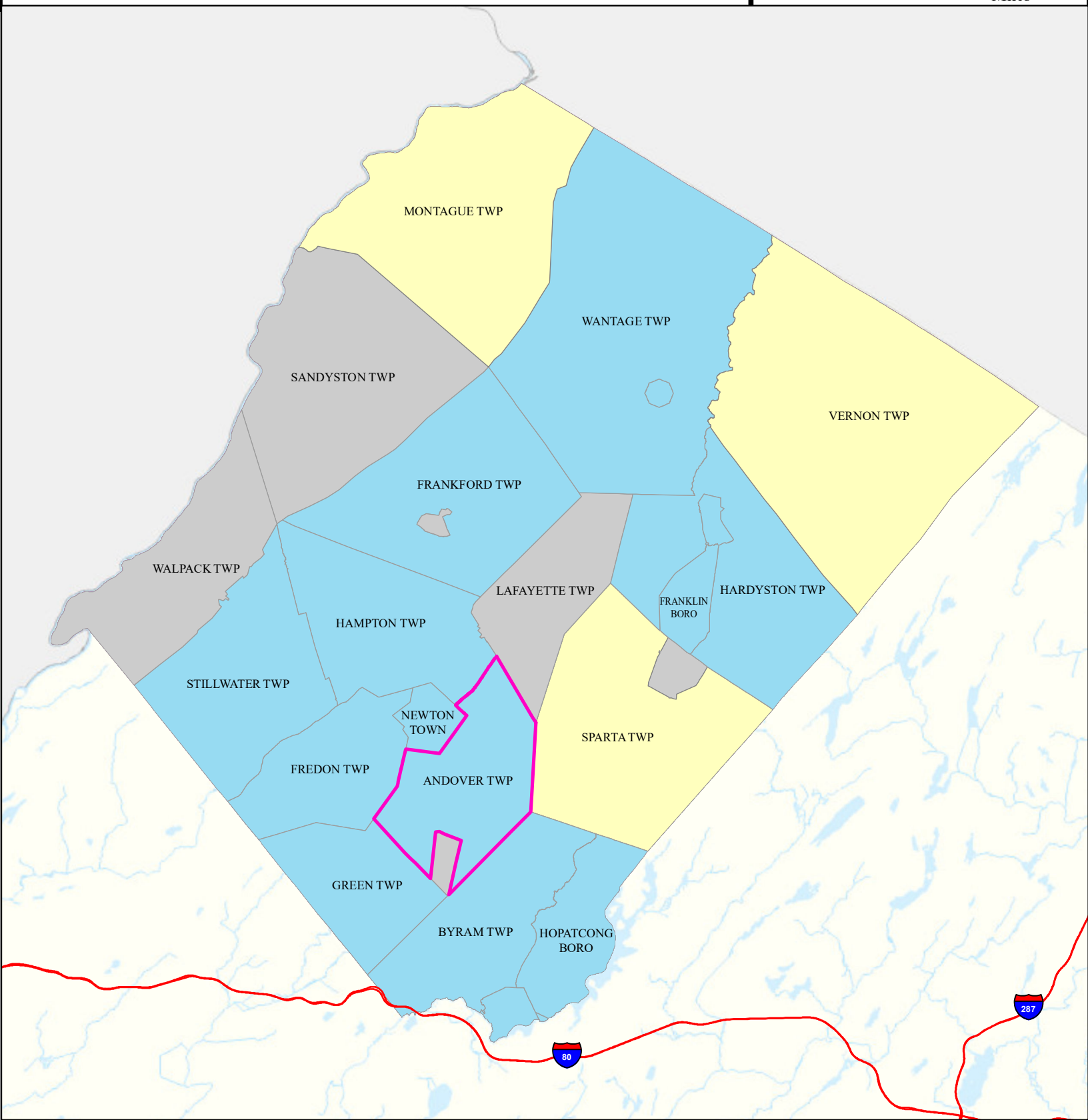
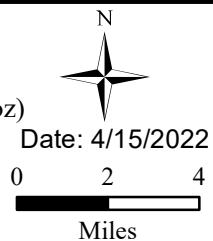
## Legend

-  Municipalities
-  Andover Twp

## State Comparison

-  Above
-  Below
-  No Difference
-  Suppressed

Birth Rate  
Low Birth Weight  
(% All Births < 5 lb, 8 oz)  
2016 to 2020





# Age of Housing

ANDOVER TWP

SUSSEX

## Legend

- Counties
- Municipalities
- ANDOVER TWP

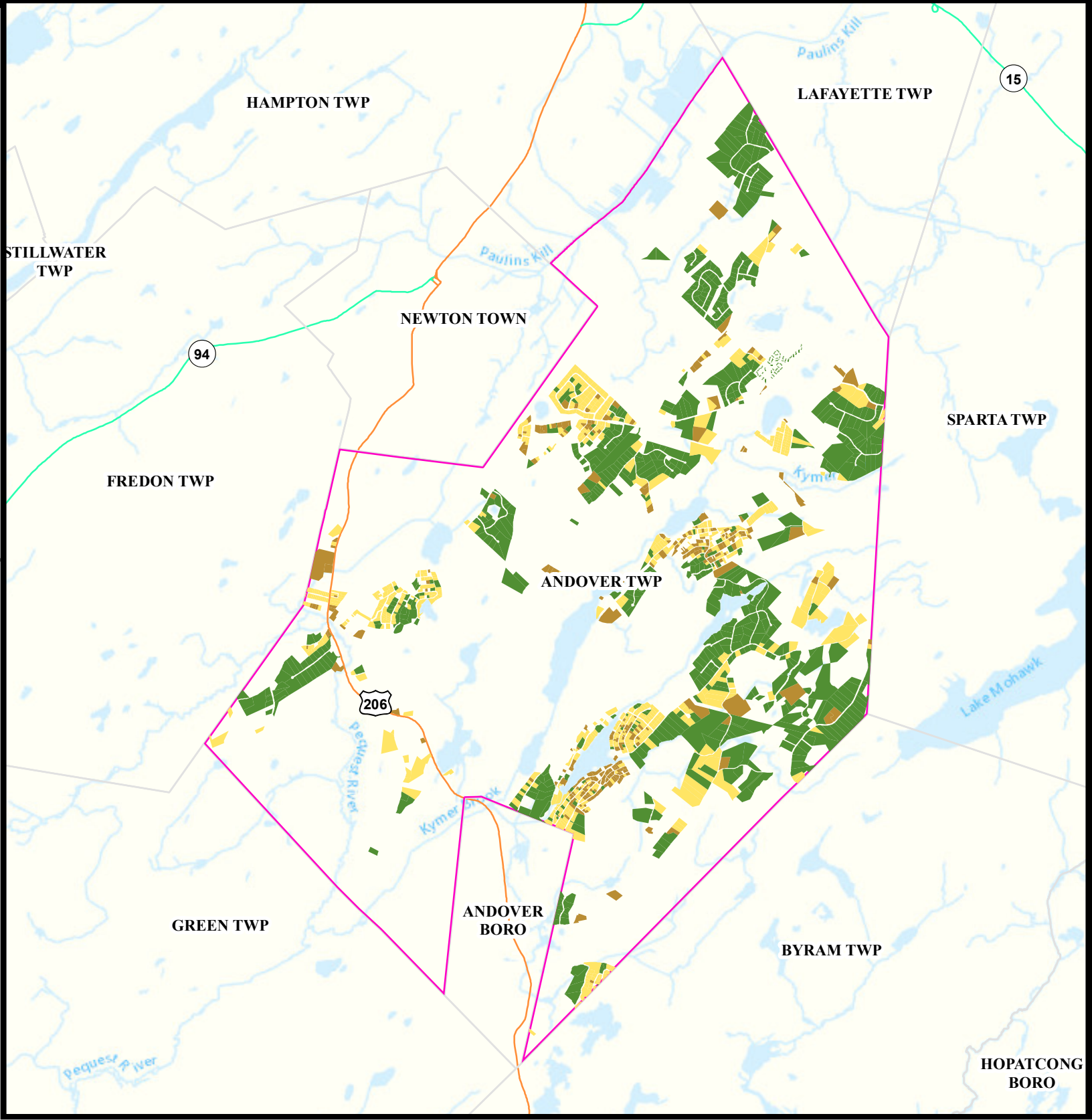
Year House Constructed	
Pre 1950	Between 1951 and 1978
After 1978	Unknown

N

Date: 4/13/2022

00.4250.85

Miles





# Asthma (Emergency Department)

**Andover Twp**

**Sussex**

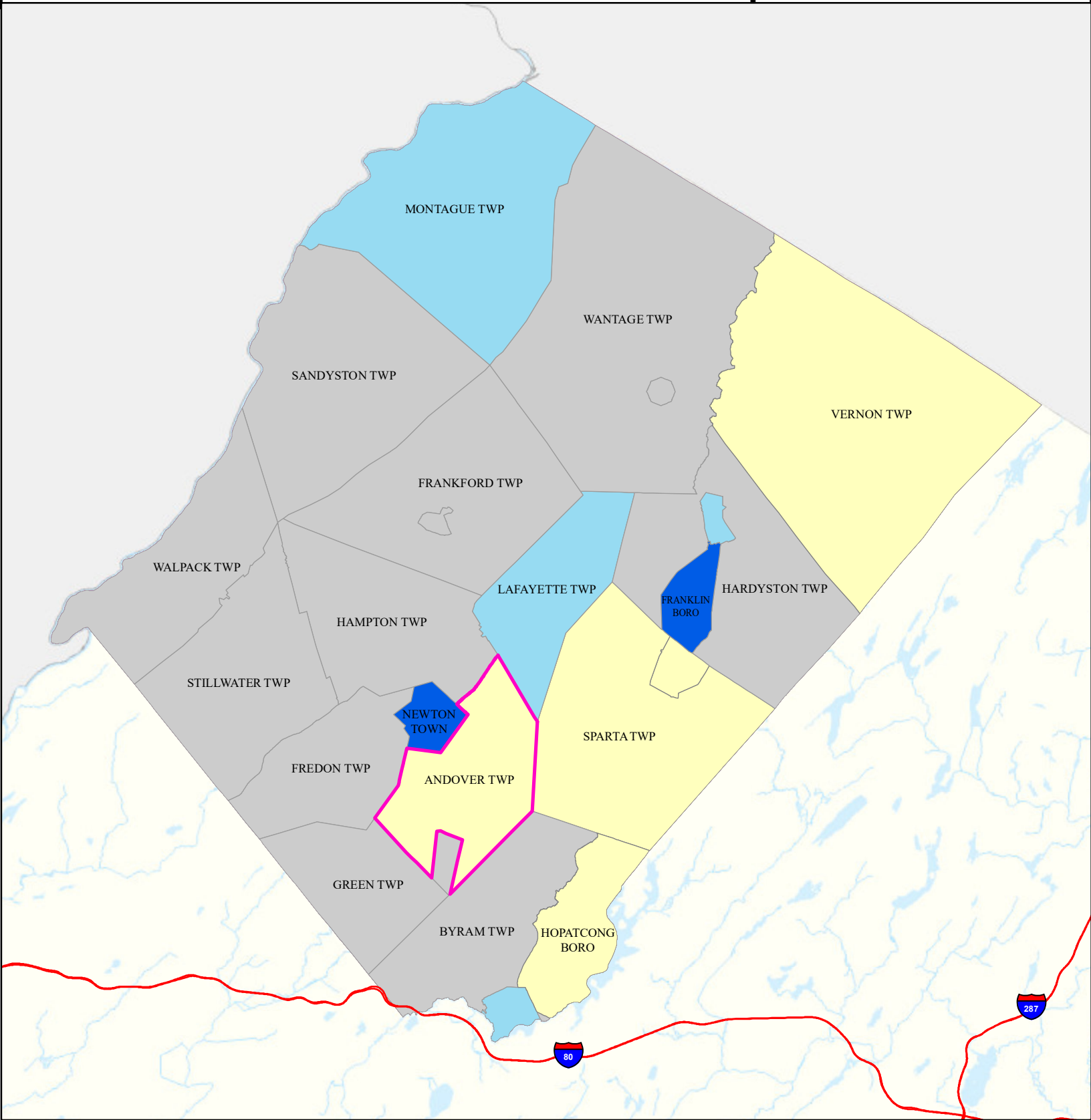
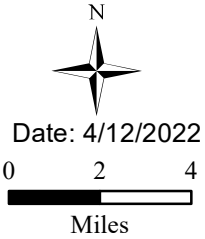
## Legend

- Municipalities
- Andover Twp

## State Comparison

- Above
- Below
- No Difference
- Suppressed

Age-adjusted Rate  
per 10,000 People  
2016 to 2019  
Emergency Department  
Visits for Asthma





# Heart Attack (AMI) (Inpatient)

**Andover Twp**

**Sussex**

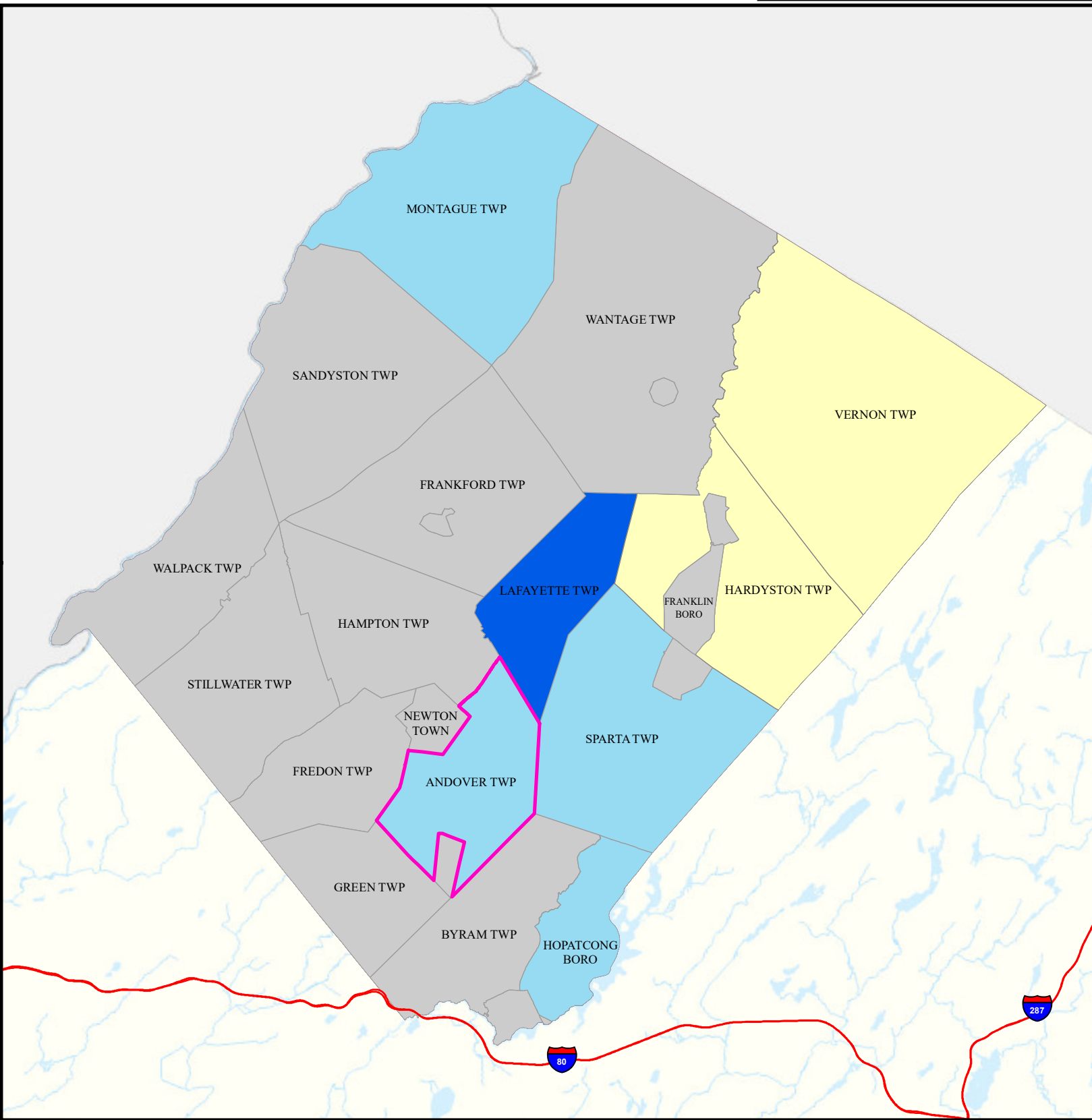
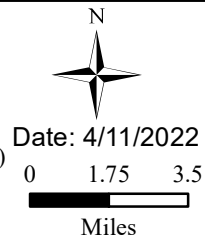
## Legend

- Municipalities
- Andover Twp

## State Comparison

- Above
- Below
- No Difference
- Suppressed

Age-adjusted Rate  
per 10,000 People  
2016 to 2019  
Inpatient Visits for AMI  
(Acute Myocardial Infarction)





# Heart Disease Deaths

**Andover Twp**

**Sussex**

## Legend

- Municipalities
- Andover Twp

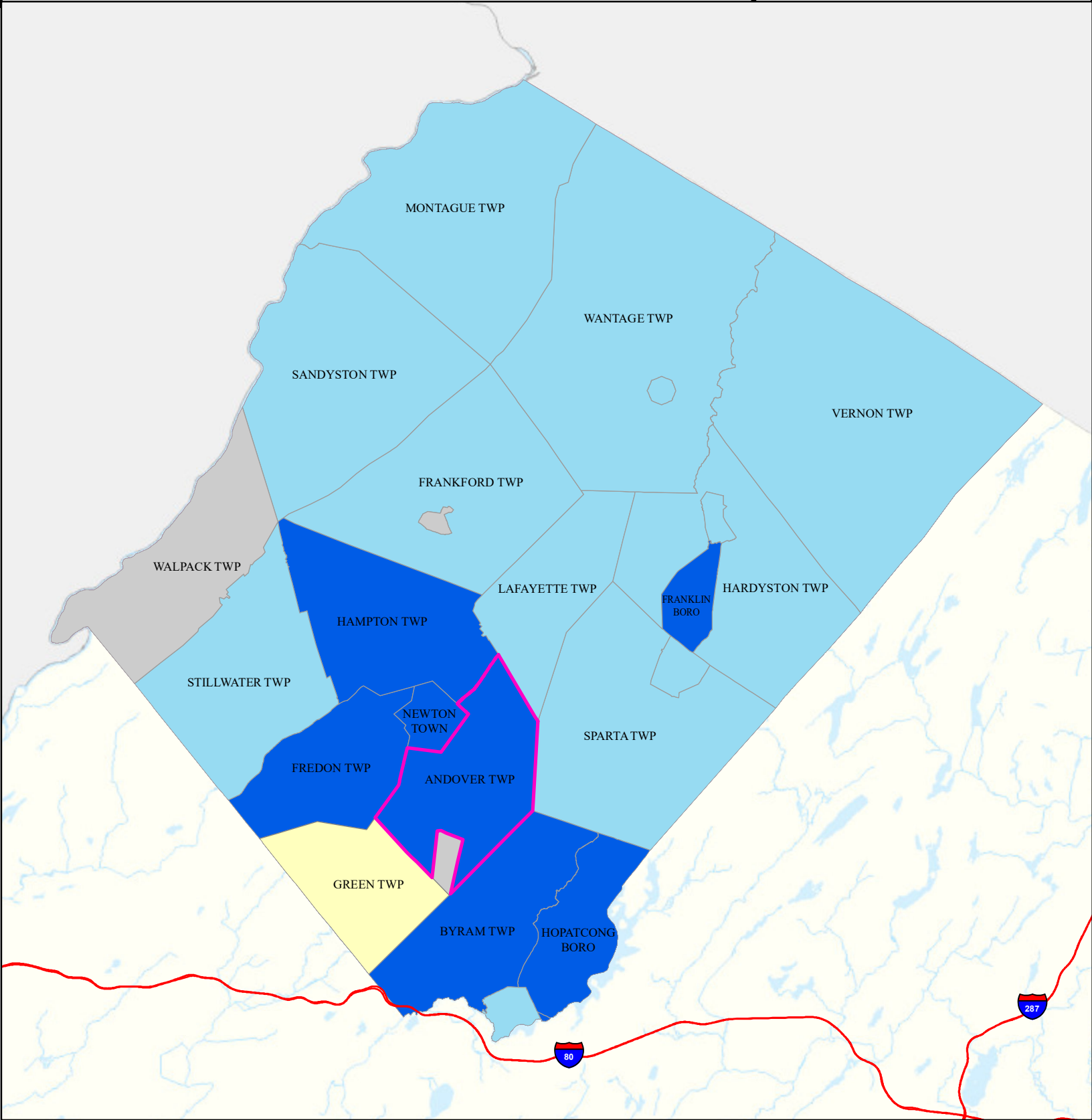
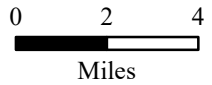
## State Comparison

- Above
- Below
- No Difference
- Suppressed

Age-adjusted Death Rate  
per 100,000 People  
2015 to 2019

Deaths for Heart Disease

Date: 4/16/2022





# COPD (Emergency Department)

**Andover Twp**

**Sussex**

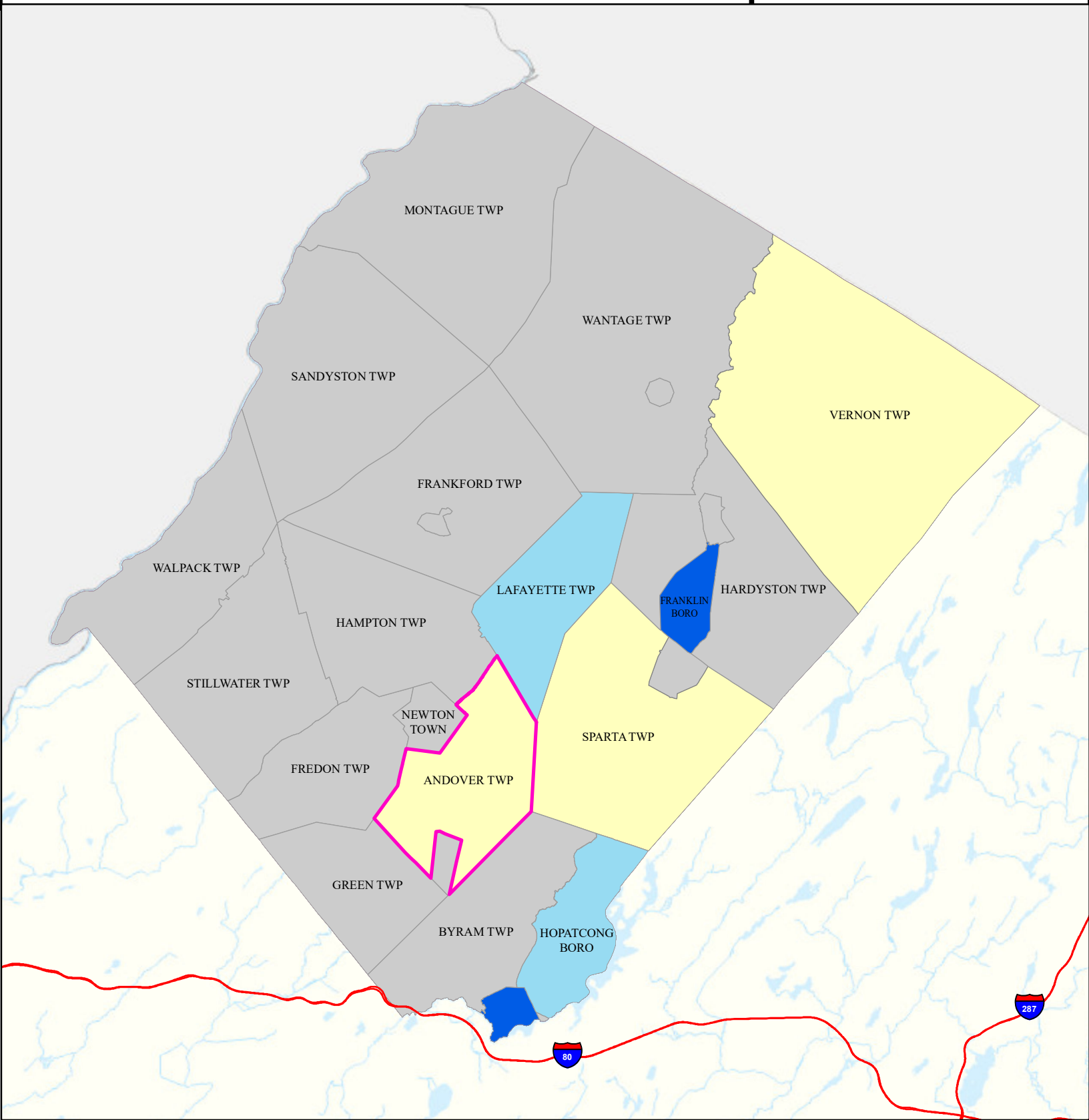
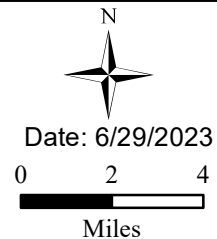
## Legend

- Municipalities
- Andover Twp

## State Comparison

- Above
- Below
- No Difference
- Suppressed

Age-adjusted Rate  
per 10,000 People  
2016 to 2019  
Emergency Department  
Visits for COPD





# Stroke (Inpatient)

Andover Twp

Sussex

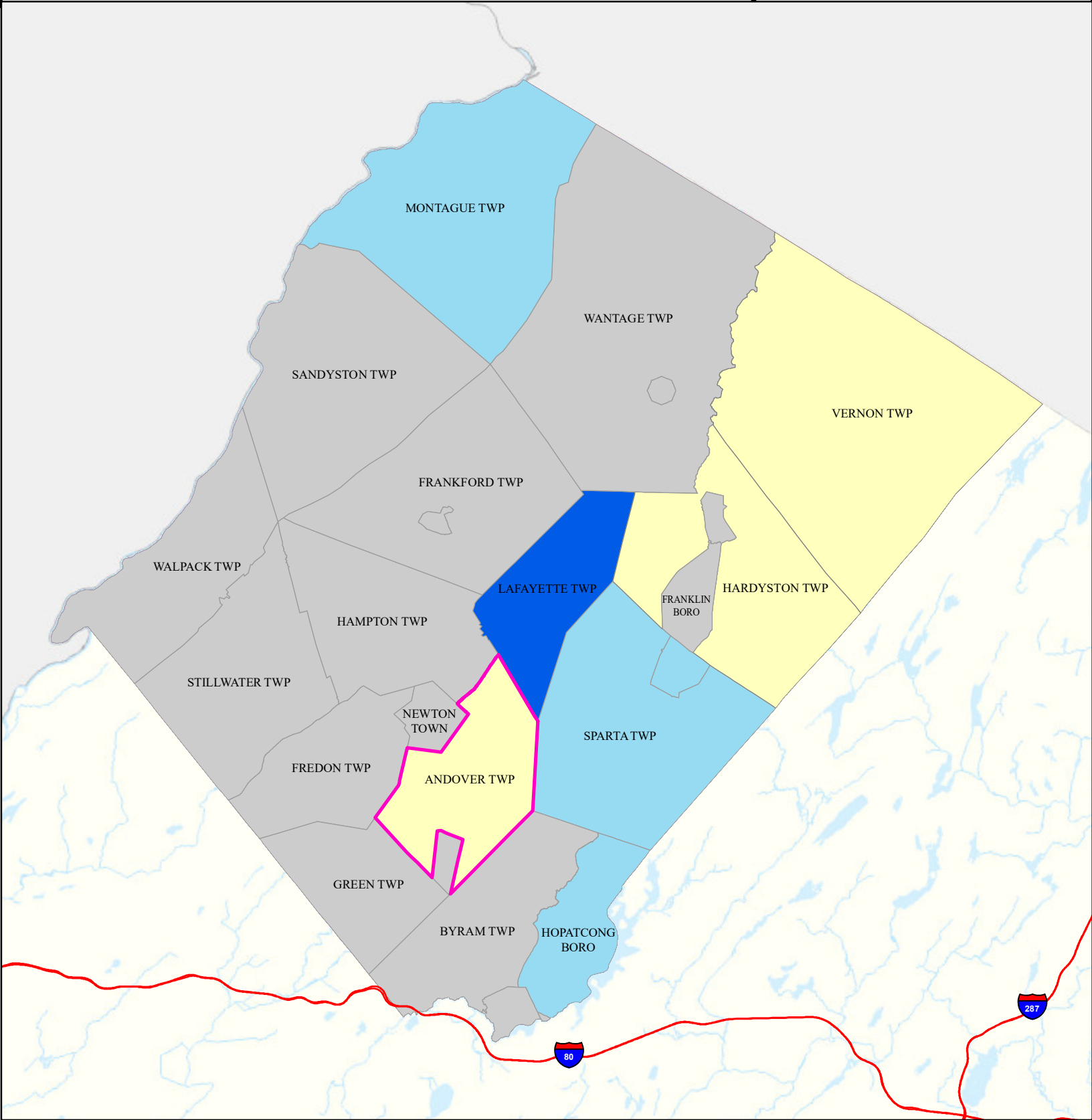
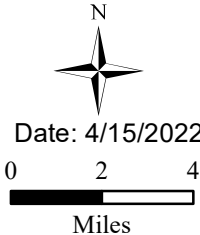
## Legend

- Municipalities
- Andover Twp

## State Comparison

- Above
- Below
- No Difference
- Suppressed

Age-adjusted Rate  
per 10,000 People  
2016 to 2019  
Inpatient Visits  
for Stroke





# All Cancer Deaths

**Andover Twp**

**Sussex**

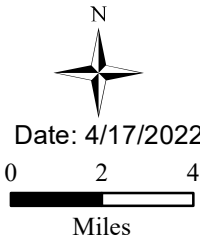
## Legend

- Municipalities
- Andover Twp

## State Comparison

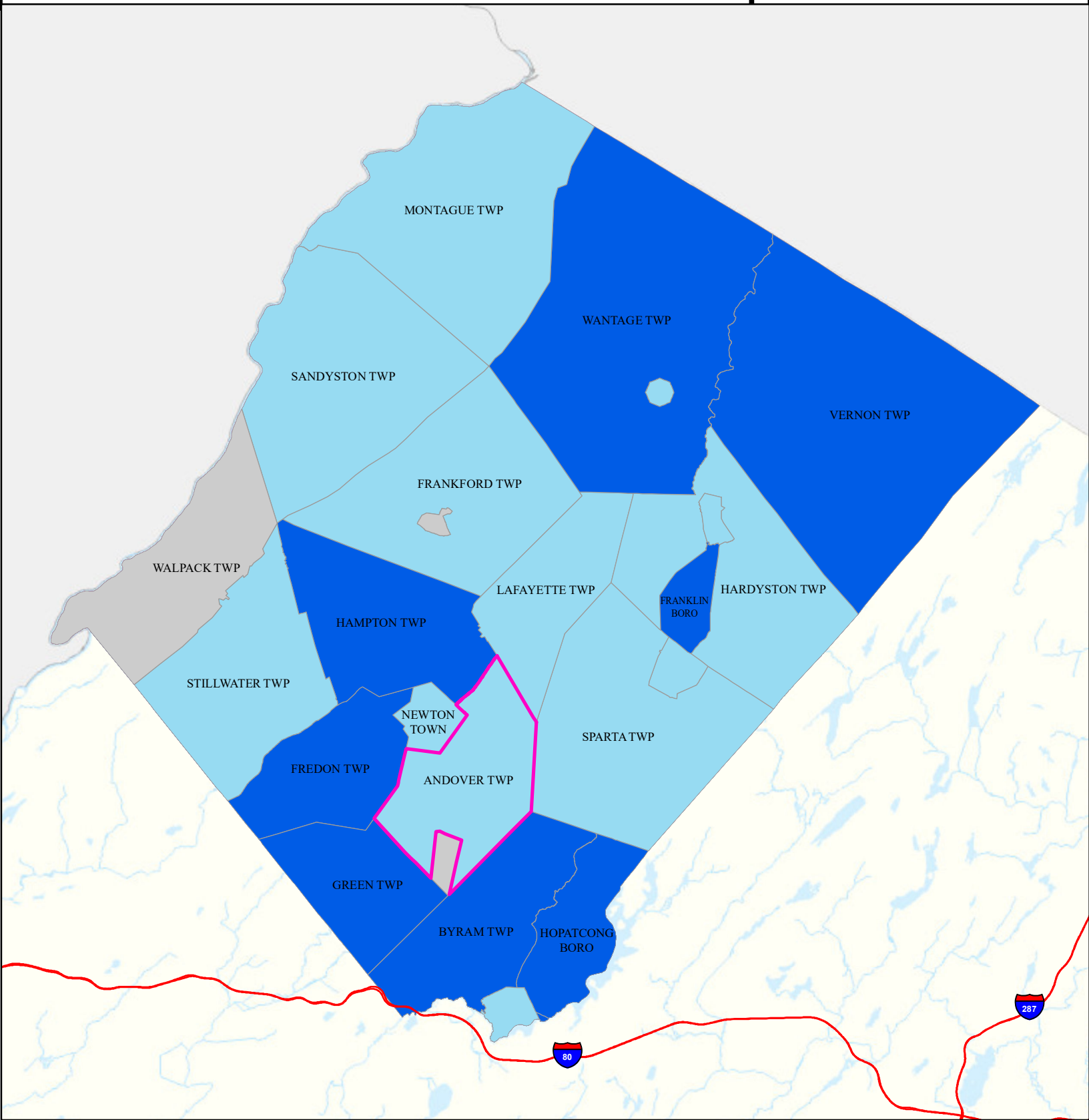
- Above
- Below
- No Difference
- Suppressed

Age-adjusted Death Rate  
per 100,000 People  
2015 to 2019  
Deaths for Cancer



Date: 4/17/2022

Miles





# Lung Cancer Deaths

**Andover Twp**

**Sussex**

## Legend

- Municipalities
- Andover Twp

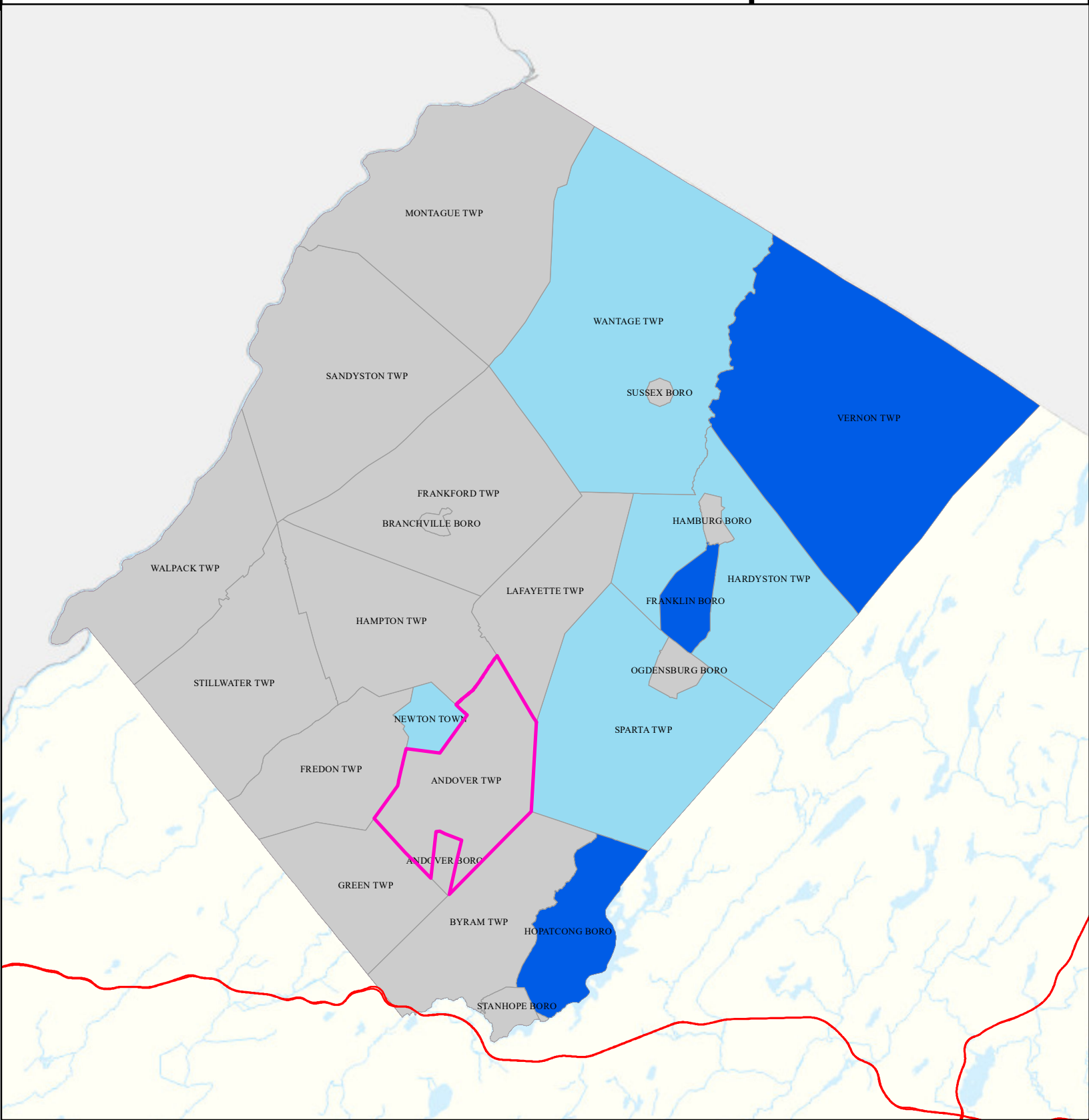
## State Comparison

- Above
- Below
- No Difference
- Suppressed

Age-adjusted Death Rate  
per 100,000 People  
2015 to 2019  
Deaths for Lung Cancer

Date: 4/17/2022

0 2 4  
Miles





# Smoking

**Andover Twp**

**Sussex**

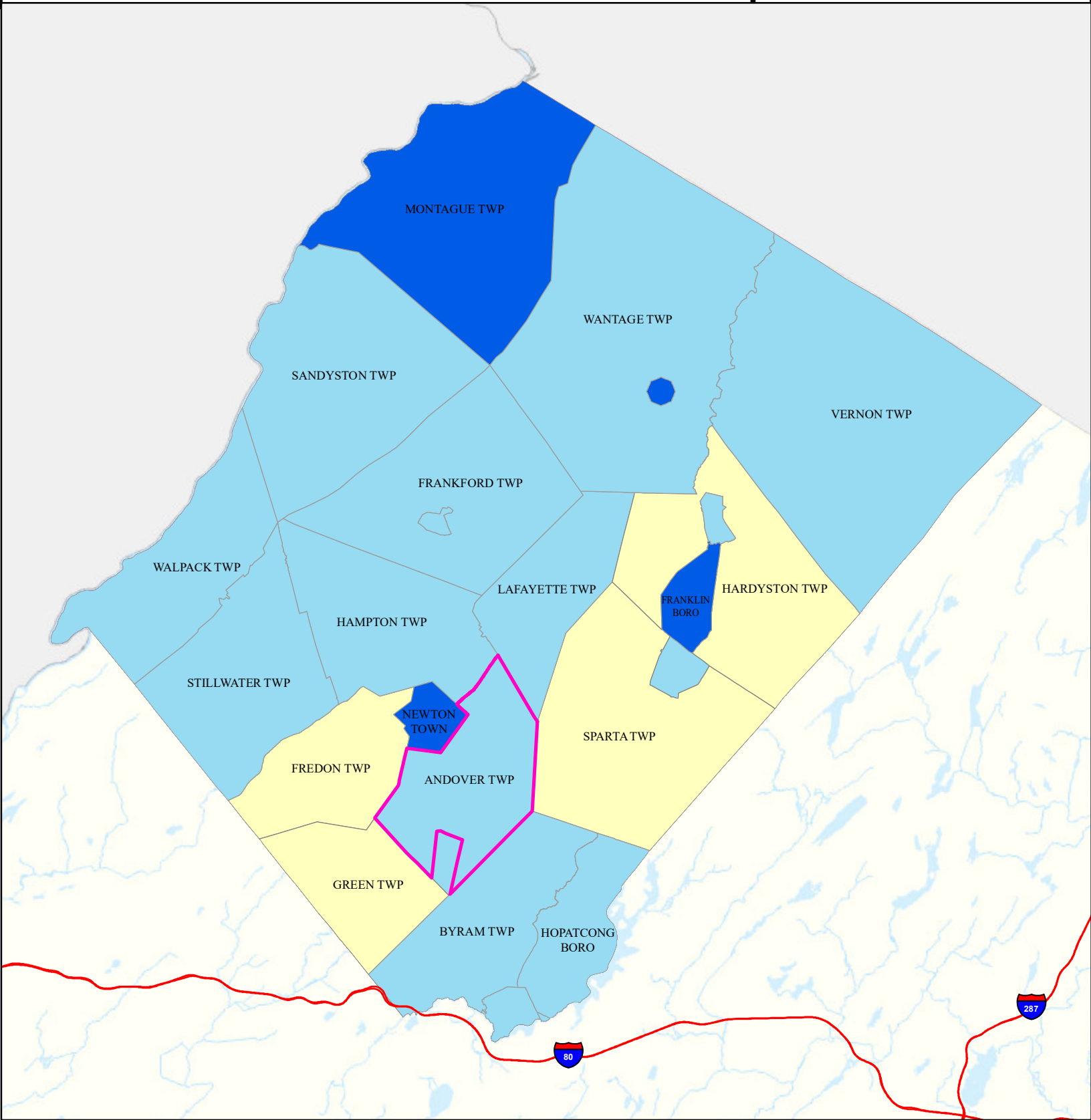
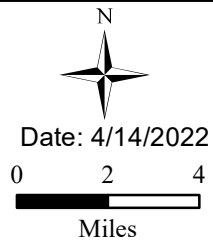
## Legend

- Municipalities
- Andover Twp

## State Comparison

- Above
- Below
- No Difference
- Suppressed

Smoking Rate  
Per Municipal  
% of Adults  
2018





# Obesity

Andover Twp

Sussex

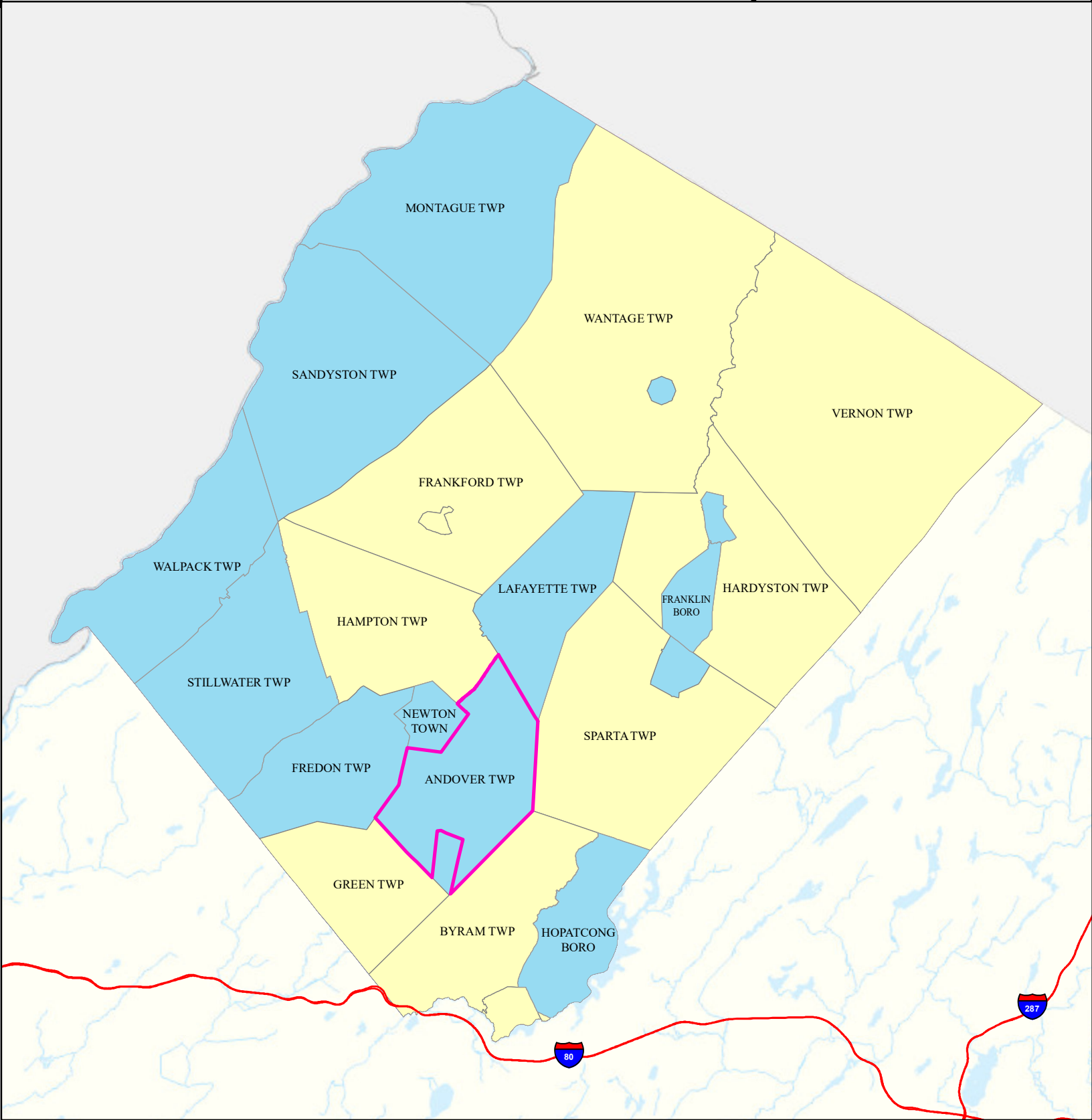
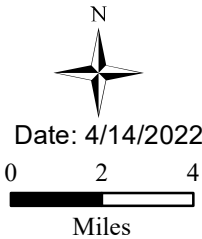
## Legend

- Municipalities
- Andover Twp

## State Comparison

- Above
- Below
- No Difference
- Suppressed

Obesity Rate  
Per Municipal  
% of Adults  
2018





# Heat Related Illness (Emergency Department)

Andover Twp

Sussex

## Legend

- Municipalities
- Andover Twp

## State Comparison

- Above
- Below
- No Difference
- Suppressed

Age-adjusted Rate  
per 10,000 People  
2016 to 2019  
Emergency Department  
Visits for  
Heat Related Illness

