

# Health Care Facilities

**GREEN TWP**

**SUSSEX**

## Legend

- Counties
- GREEN TWP

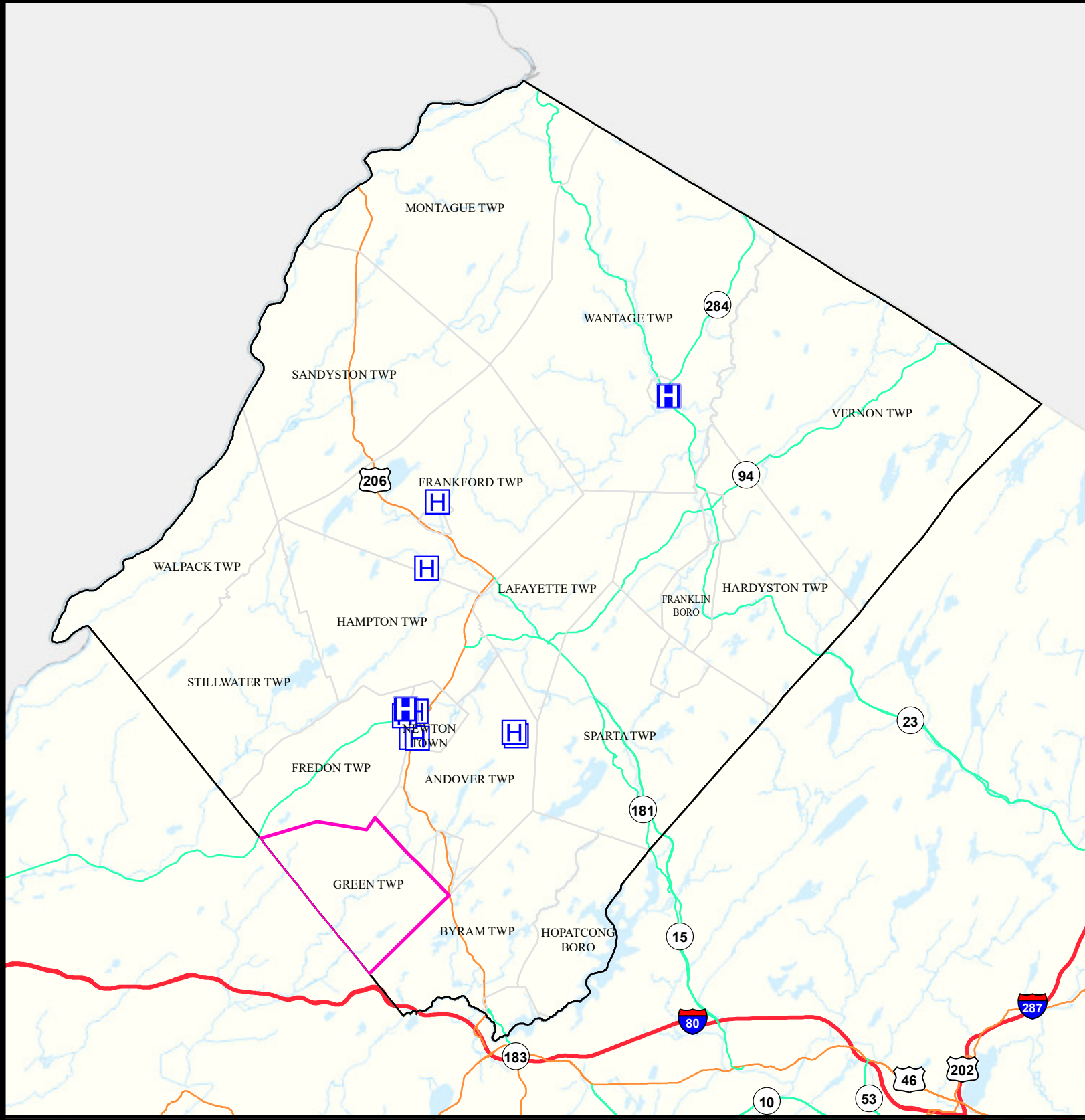
- Hospitals
- Nursing Homes
- Municipalities

N

Date: 9/26/2022

0 2 4

Miles



# Air Cancer Risk











**GREEN TWP**

**SUSSEX**

## Legend

-  Counties
-  GREEN TWP

### Risk per Million

	61 - 87		128 - 145		244 - 283
	88 - 108		146 - 167		284 - 351
	109 - 127		168 - 193		352 - 604
			194 - 243		

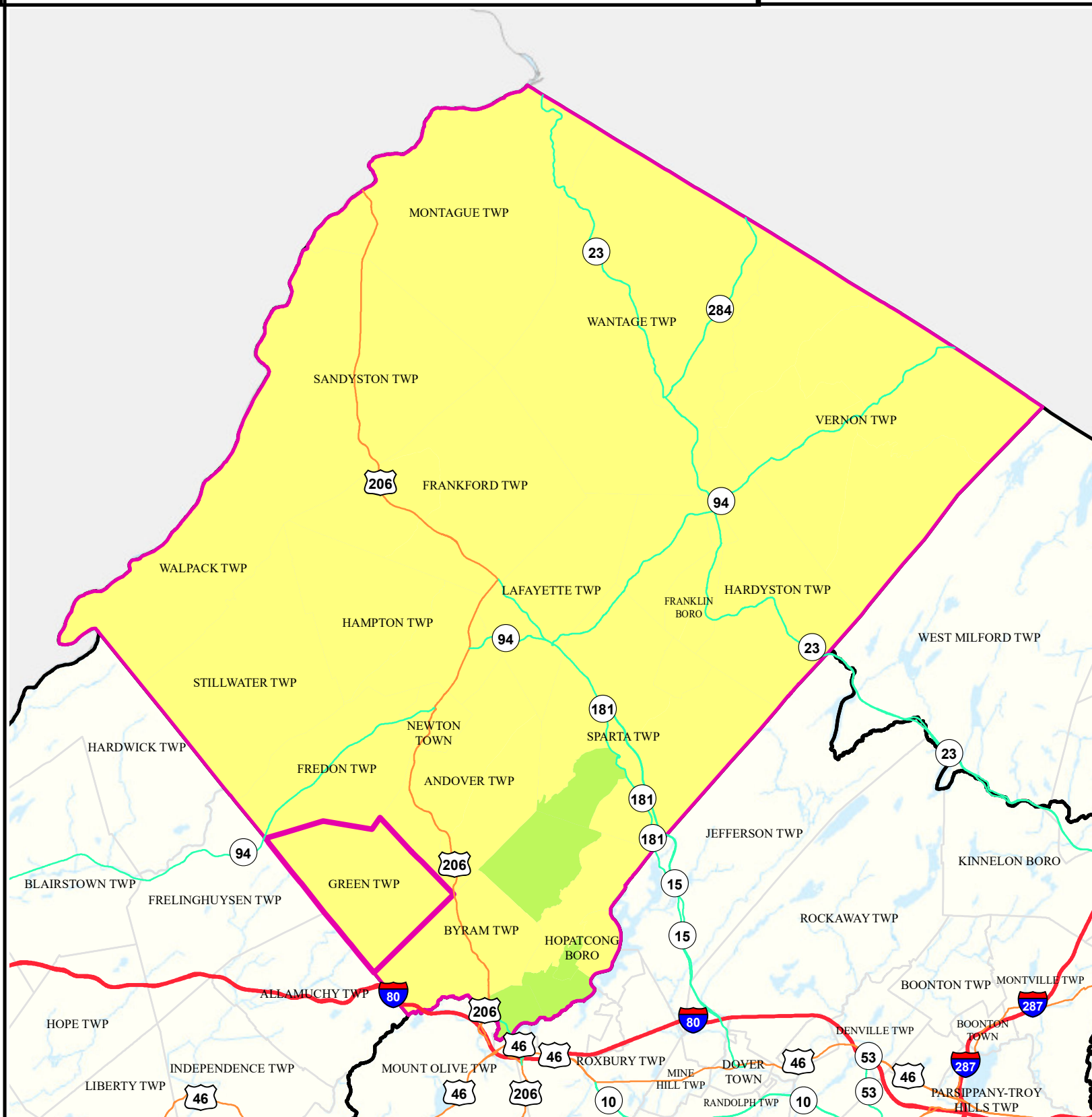


Date: 9/26/2022

0 1.75 3.5



Miles



# Air Non Cancer

**GREEN TWP**


**SUSSEX**

## Legend

-  Counties
-  GREEN TWP


Combined Hazard Index	
	0.75 - 1.00
	1.01 - 2.00
	2.01 - 3.00
	3.01 - 4.00
	4.01 - 8.09

N

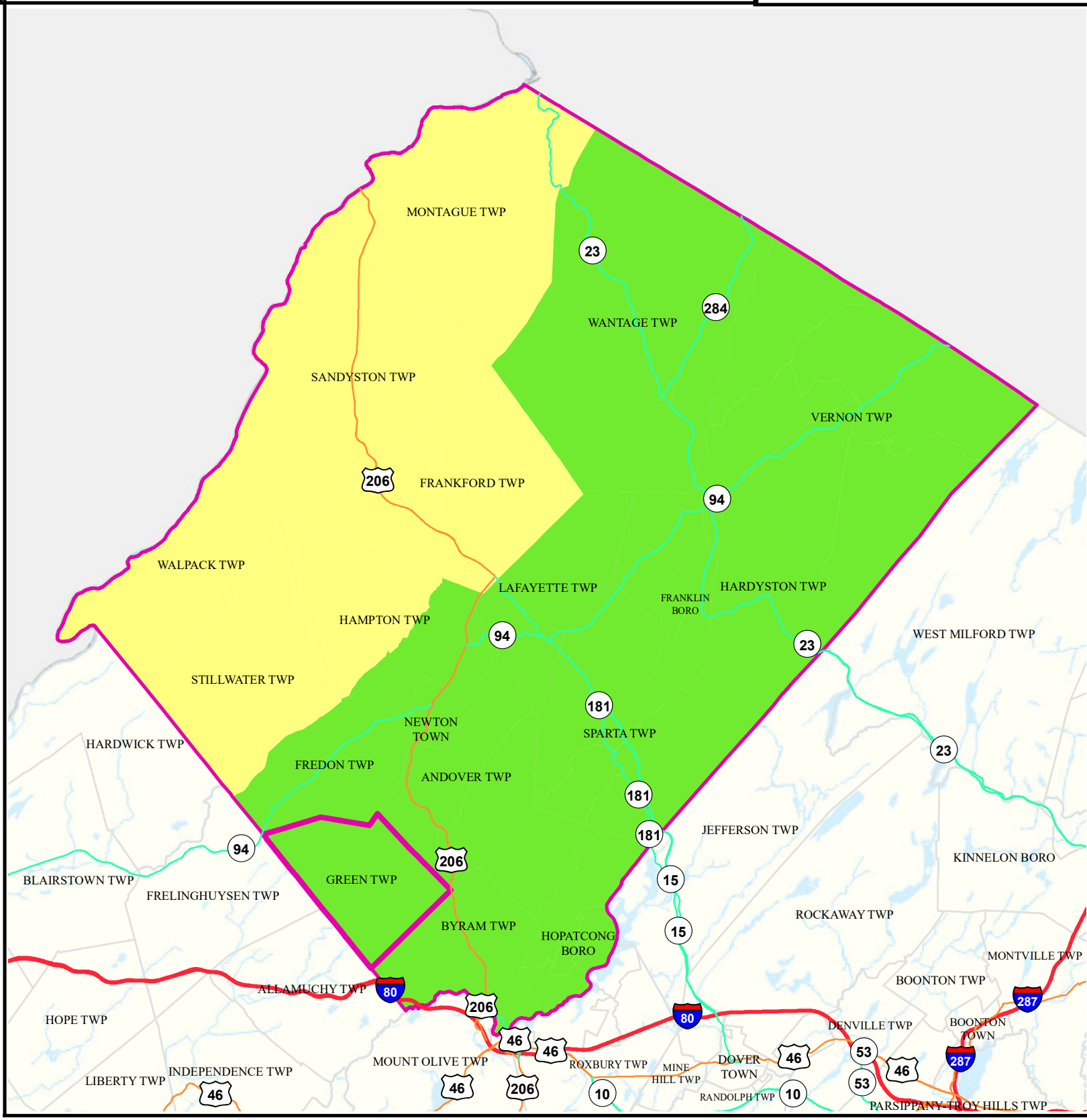


Date: 9/26/2022

0 2 4



Miles



# Air Quality Index (AQI)

GREEN TWP

SUSSEX

## Legend

- Municipalities
- GREEN TWP

## Average AQI Days

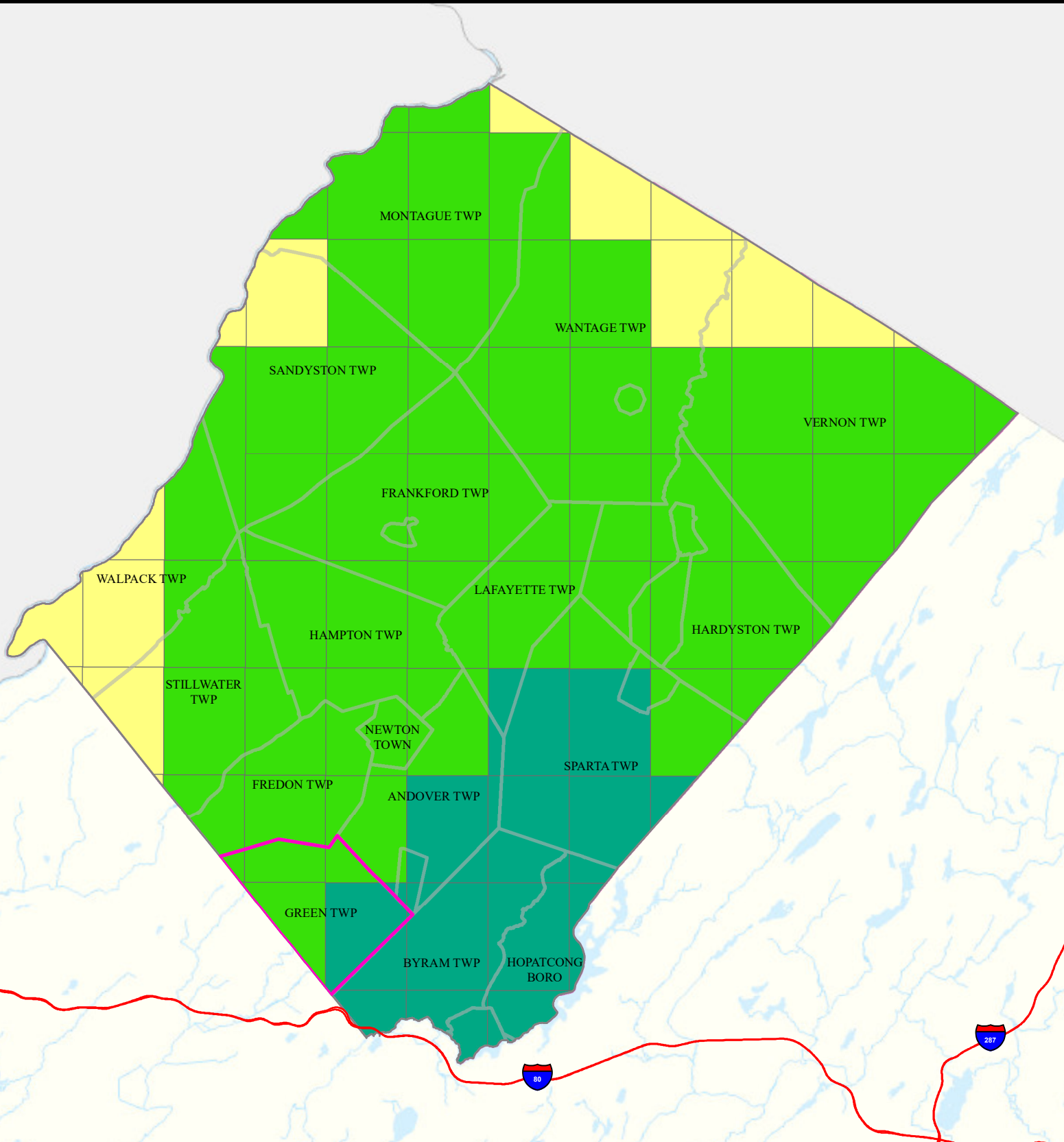
- 0 - 1
- 1.5 - 3
- 3.5 - 6.5
- 7 - 12

Air Quality Index (AQI)  
Days above 100 (3 yr Avg)  
2018 to 2020



0 2 4 Miles

Date: 4/18/2022



# Community Drinking Water

## GREEN TWP

## SUSSEX

### Legend

- Counties
- GREEN TWP
- Municipalities

MCL and TT Violations  
and AL Exceedances

0

1 - 5

6 - 10

11 - 15

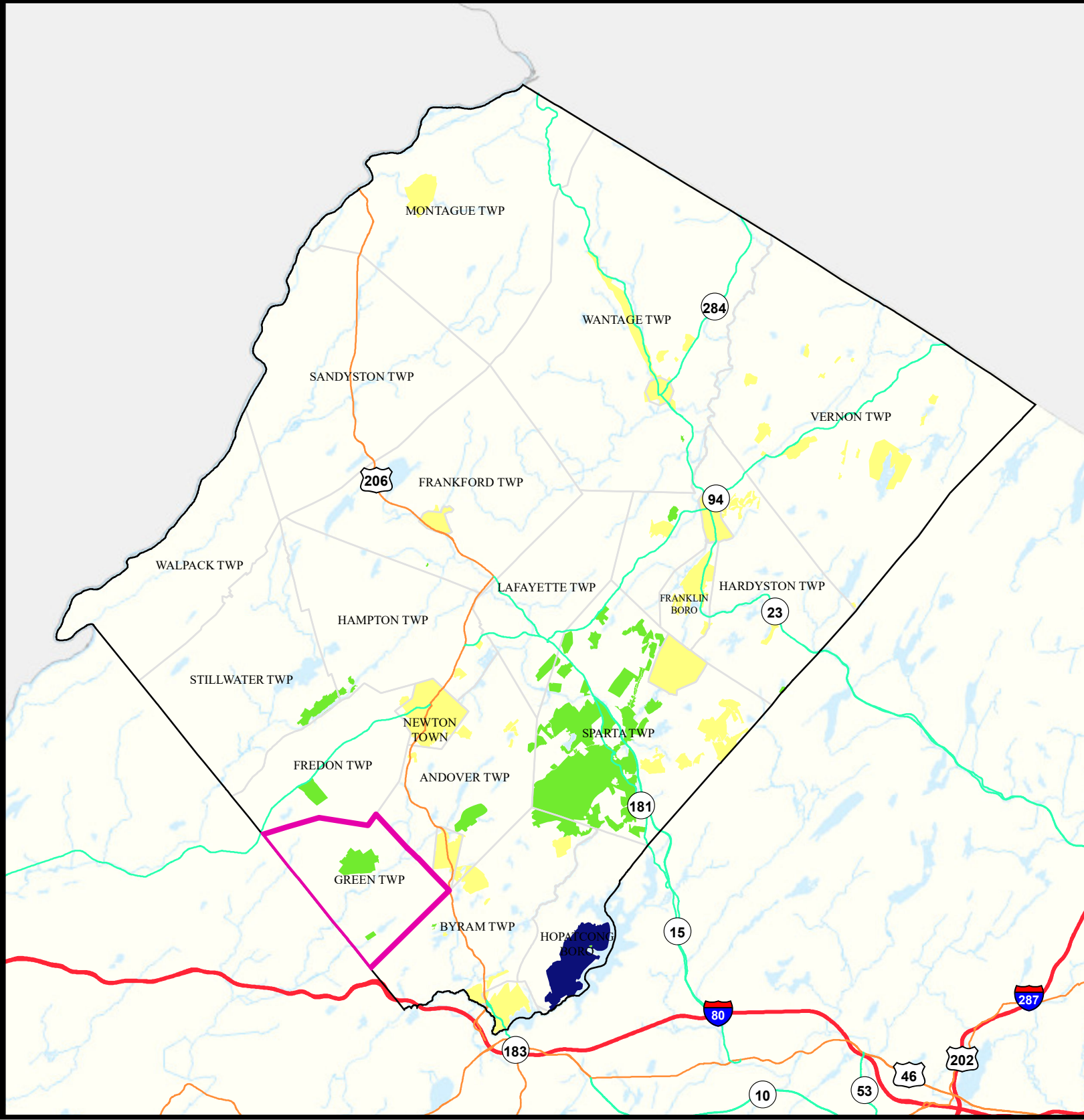
16 - 30



Date: 9/27/2022

0 2 4

Miles



# Surface Water Quality

**GREEN TWP**


**SUSSEX**

## Legend

Impaired (Percent)	
NA	0
20	40
25	50
33	60
66	75
80	100


-  Counties
-  Municipalities
-  GREEN TWP

N

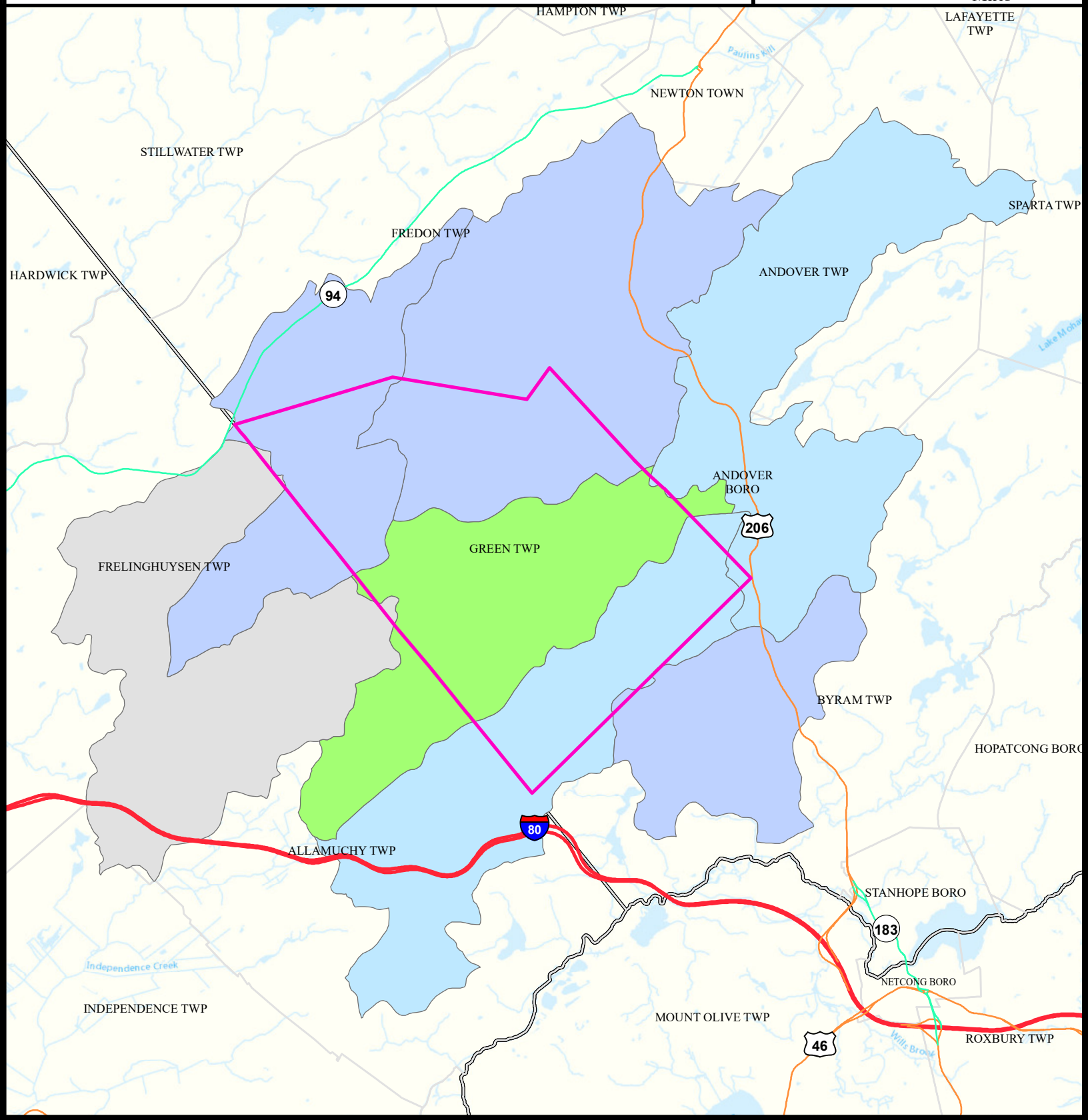


Date: 9/26/2022

0 0.5 1



Miles





What is a Designated Use?

New Jersey's [Surface Water Quality Standards \(SWQS\)](#) establish the designated uses of the State's surface waters, classify surface waters based on those uses, and specify the water quality criteria and other policies necessary to attain those uses. Designated uses include water supply for drinking, agriculture and industrial uses, fish consumption, shellfish resources, propagation of fish and wildlife, and recreation.

The table below show the designated use information for your municipality. For more information on Surface Water Quality, see the Healthy Community Planning Report for this municipality.

AU_name	Aquatic_General	Aquatic_Trout	Water_Supply	Recreation	Shellfish	Fish_Consumption
New Wawayanda Lake/Andover Pond trib	Non Attaining	Insufficient Data	Attaining	Insufficient Data	NA	Non Attaining
Pequest R (above Brighton)	Non Attaining	Non Attaining	Attaining	Non Attaining	NA	Insufficient Data
Trout Brook / Lake Tranquility	Non Attaining	Insufficient Data	Attaining	Insufficient Data	NA	Non Attaining
Pequest R (Trout Brook to Brighton)	Non Attaining	Attaining	Attaining	Non Attaining	NA	Insufficient Data
Cranberry Lake / Jefferson Lake & tribs	Non Attaining	Non Attaining	Attaining	Insufficient Data	NA	Non Attaining
Bear Creek	Attaining	Attaining	Insufficient Data	Insufficient Data	NA	Insufficient Data
Bear Brook (Sussex/Warren Co)	Non Attaining	Non Attaining	Attaining	Non Attaining	NA	Insufficient Data

# Flooding (Urban Land Cover)

**GREEN TWP**

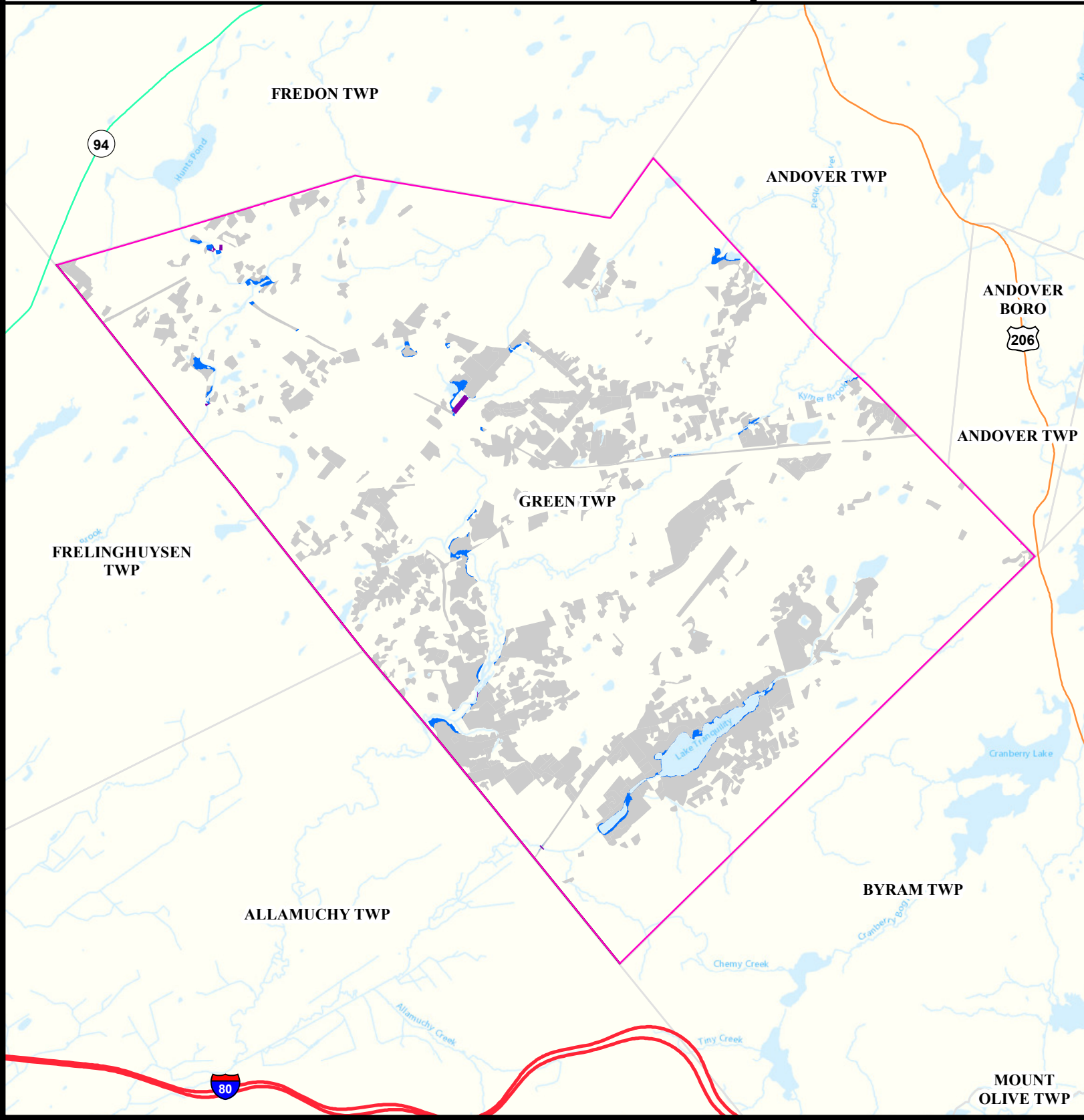
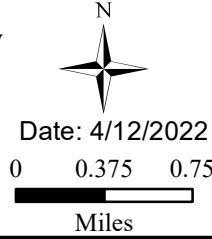
**SUSSEX**

## Legend

- Counties
- GREEN TWP
- Municipalities

- Urban Land
- Urban Land Flooded
- Toll Road
- Interstate
- US Highway
- State Highway
- Impacted Roads

Impacted roads show only county level or higher routes in flooding areas.





# Air Permit Sources

**GREEN TWP**

**SUSSEX**

## Legend

## Facility Type

- Counties
- GREEN TWP

- Major
- Minor

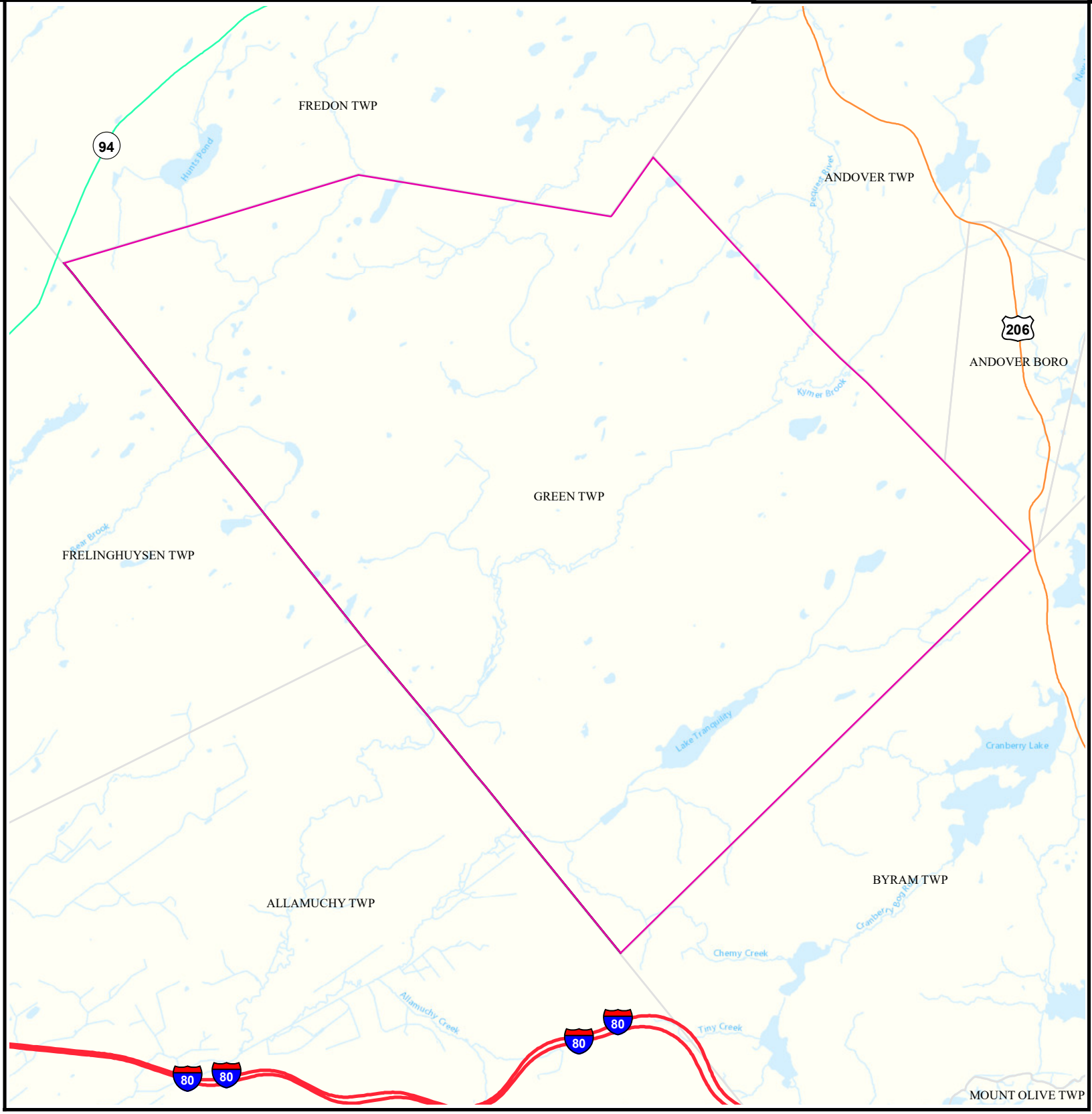


Date: 4/12/2022

0 0.375 0.75



Miles



# Contaminated Sites

**GREEN TWP**

**SUSSEX**

## Legend

- Counties
- GREEN TWP
- Municipalities

### Known Contaminated Sites

#### Density Weighting

- 0
- 1
- 2
- 3
- Other

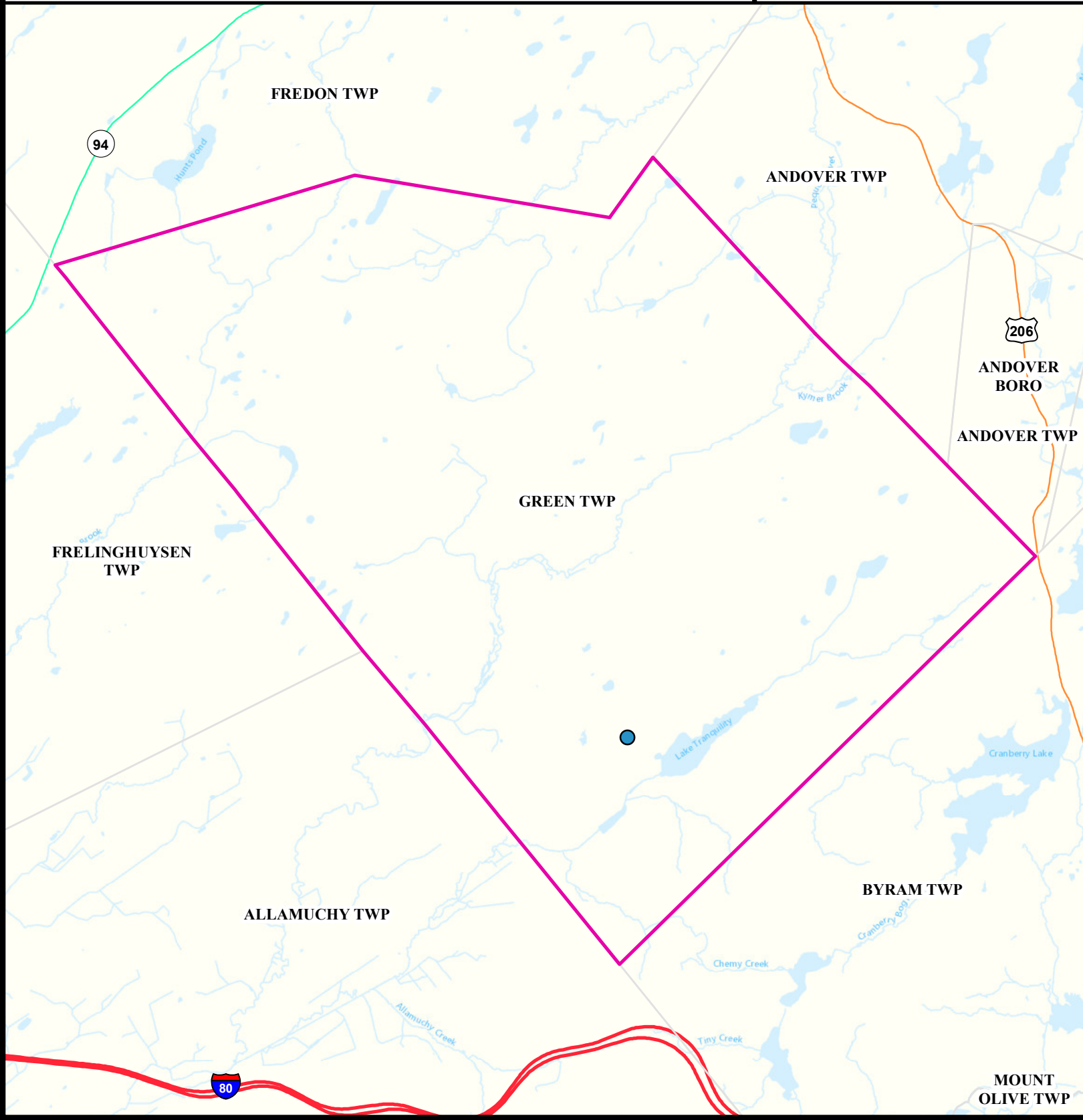


Date: 5/24/2022

0 0.375 0.75



Miles



# Open Space

**GREEN TWP**

**SUSSEX**

## Legend

- Counties
- GREEN TWP

- Open Space
- Residential Population > 1/4 Mile from Open Space

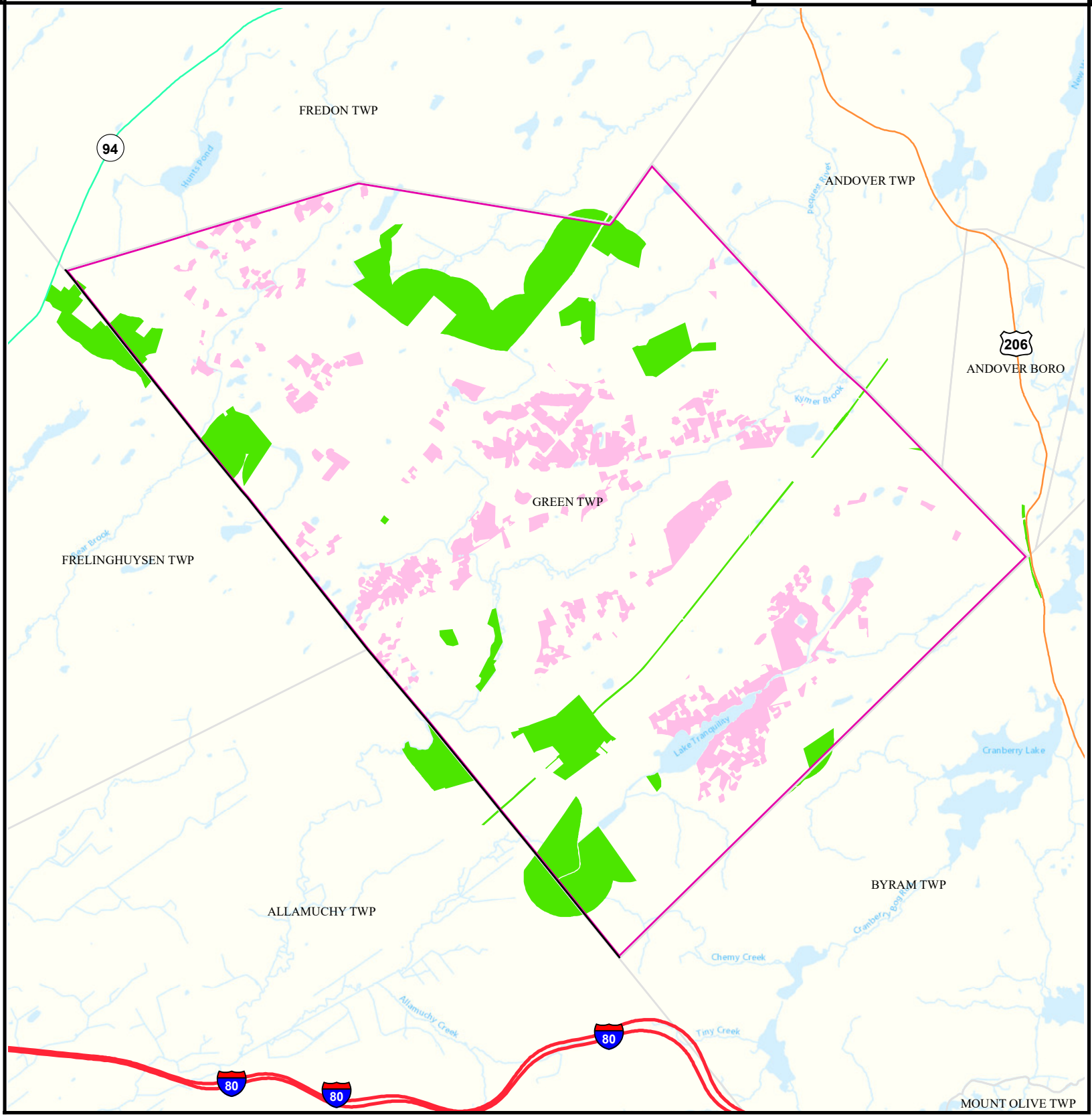


Date: 9/27/2022

0 0.375 0.75



Miles



# Low Birth Weight

Green Twp

Sussex

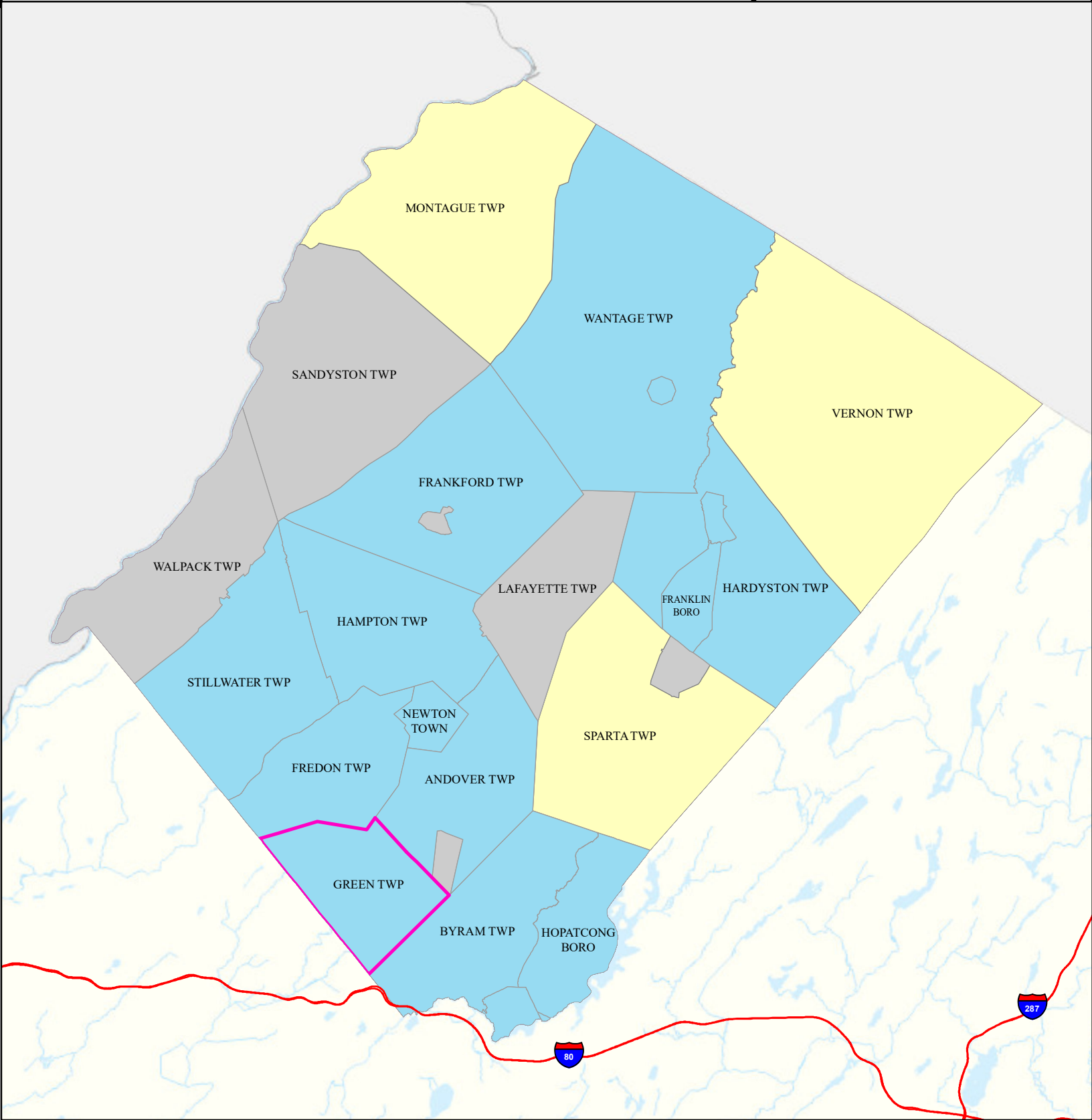
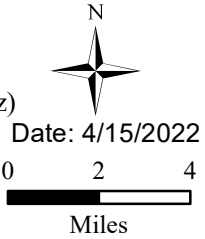
## Legend

- Municipalities
- Green Twp

## State Comparison

- Above
- Below
- No Difference
- Suppressed

Birth Rate  
Low Birth Weight  
(% All Births < 5 lb, 8 oz)  
2016 to 2020



# Age of Housing

**GREEN TWP**


**SUSSEX**

## Legend

- Counties
- Municipalities
- GREEN TWP


- Year House Constructed**
- Pre 1950
  - Between 1951 and 1978
  - After 1978
  - Unknown

N

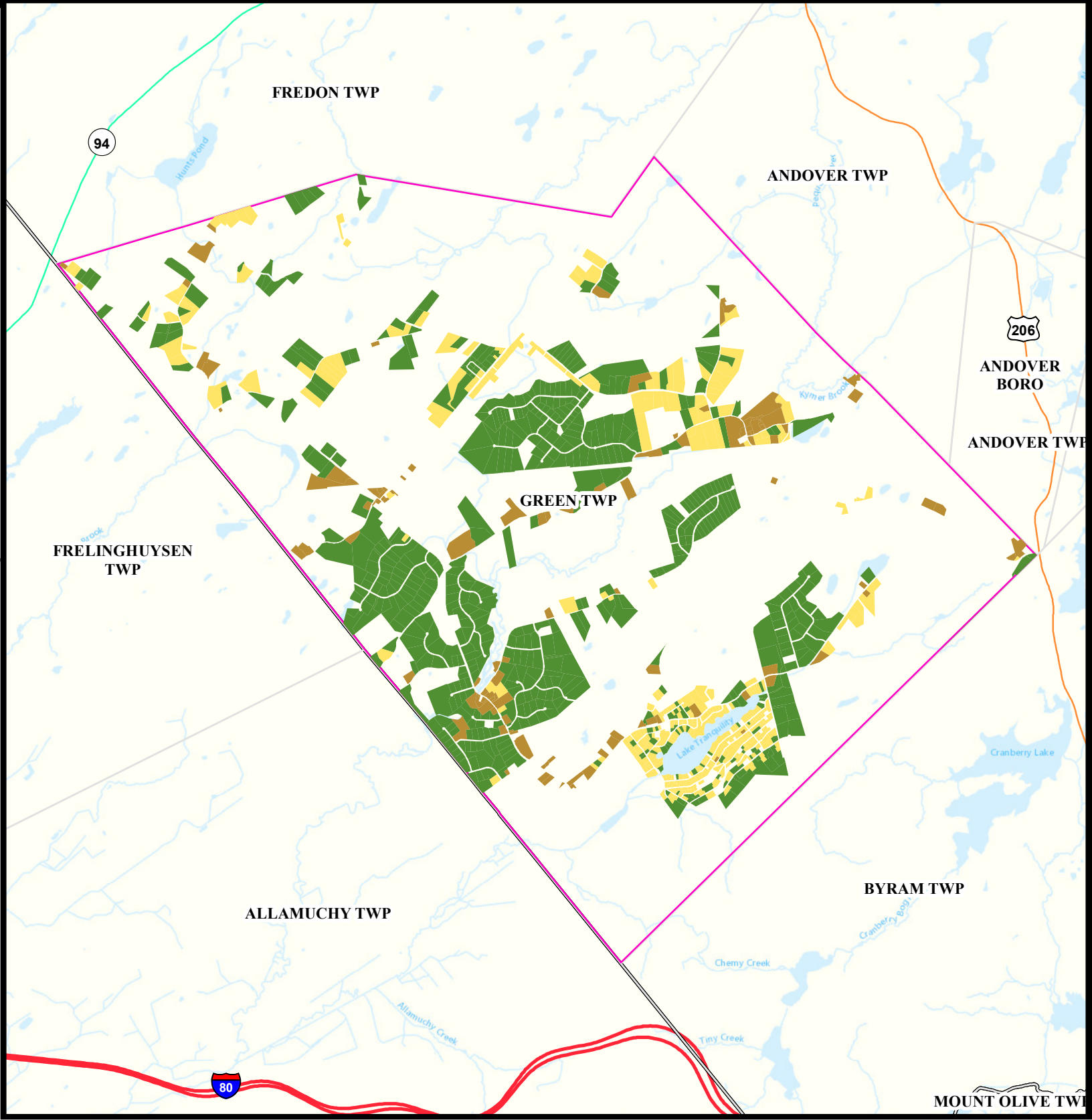


Date: 4/12/2022

0 0.375 0.75



Miles



# Asthma (Emergency Department)

Green Twp

Sussex

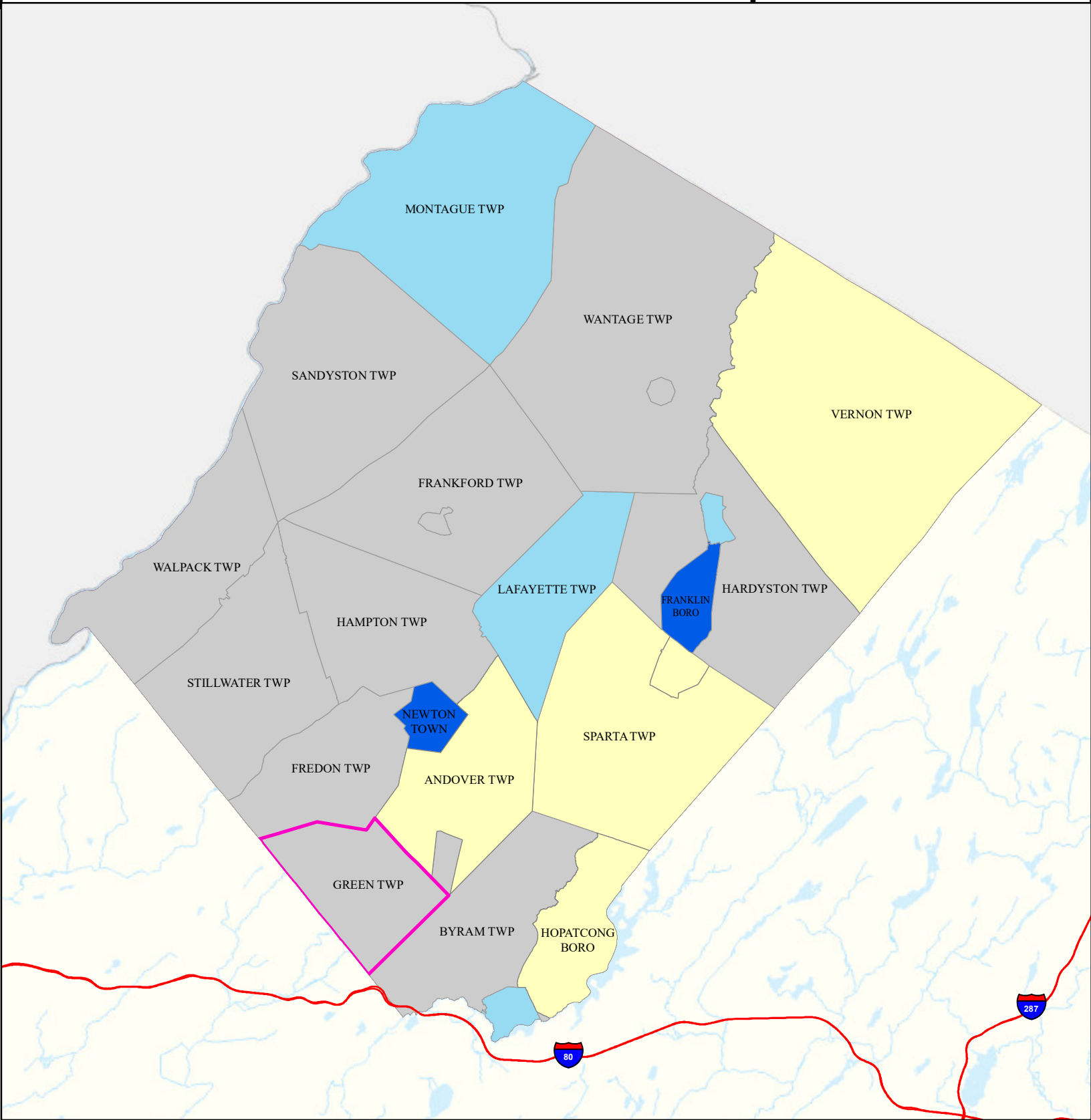
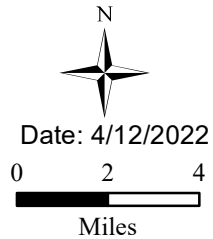
## Legend

- Municipalities
- Green Twp

## State Comparison

- Above
- Below
- No Difference
- Suppressed

Age-adjusted Rate per 10,000 People 2016 to 2019  
Emergency Department Visits for Asthma



# Heart Attack (AMI) (Inpatient)

Green Twp

Sussex

## Legend

- Municipalities
- Green Twp

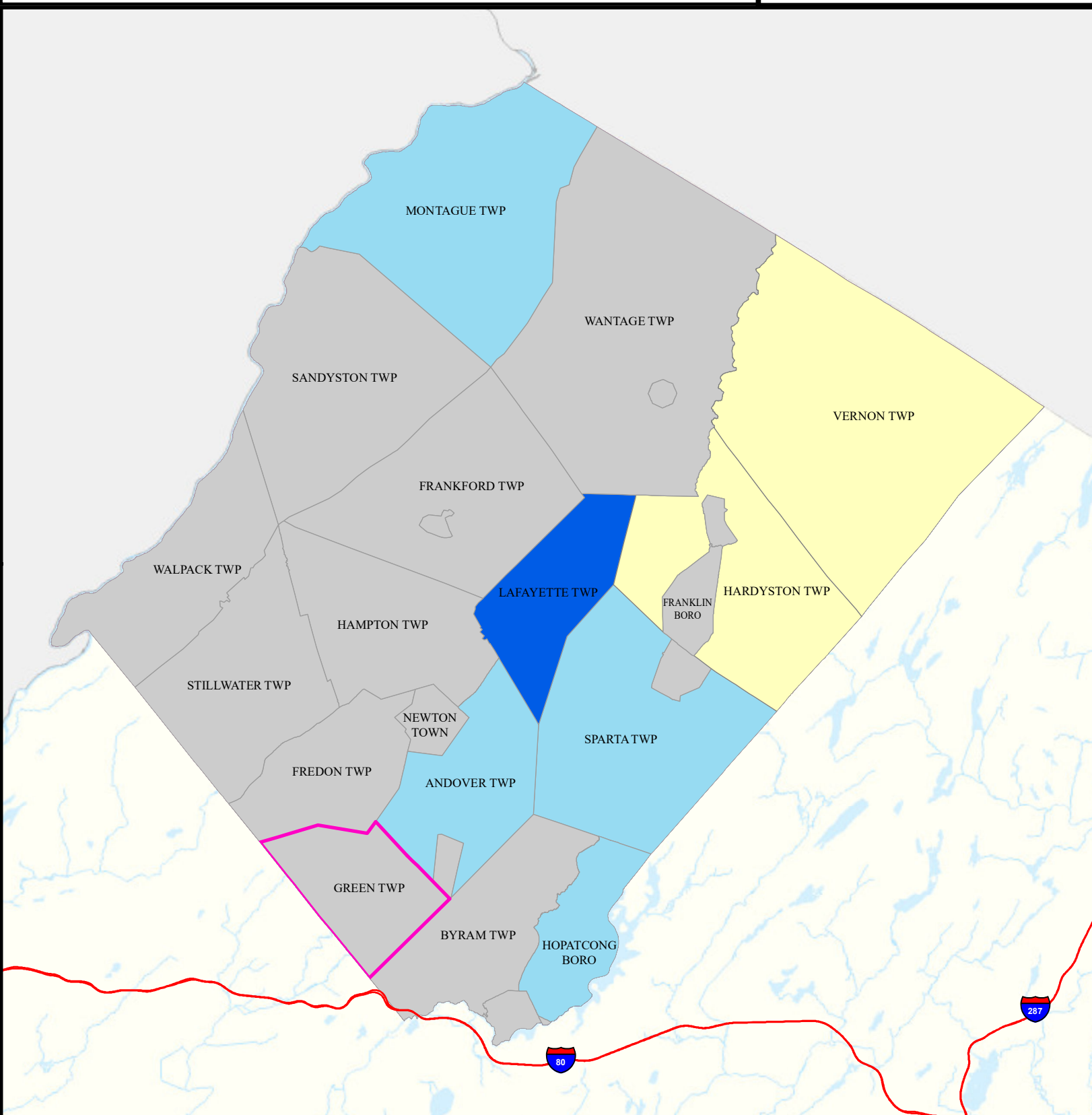
## State Comparison

- Above
- Below
- No Difference
- Suppressed

Age-adjusted Rate  
per 10,000 People  
2016 to 2019  
Inpatient Visits for AMI  
(Acute Myocardial Infarction) 0 1.75 3.5

Date: 4/11/2022

Miles



# Heart Disease Deaths

**Green Twp**

**Sussex**

## Legend

- Municipalities
- Green Twp

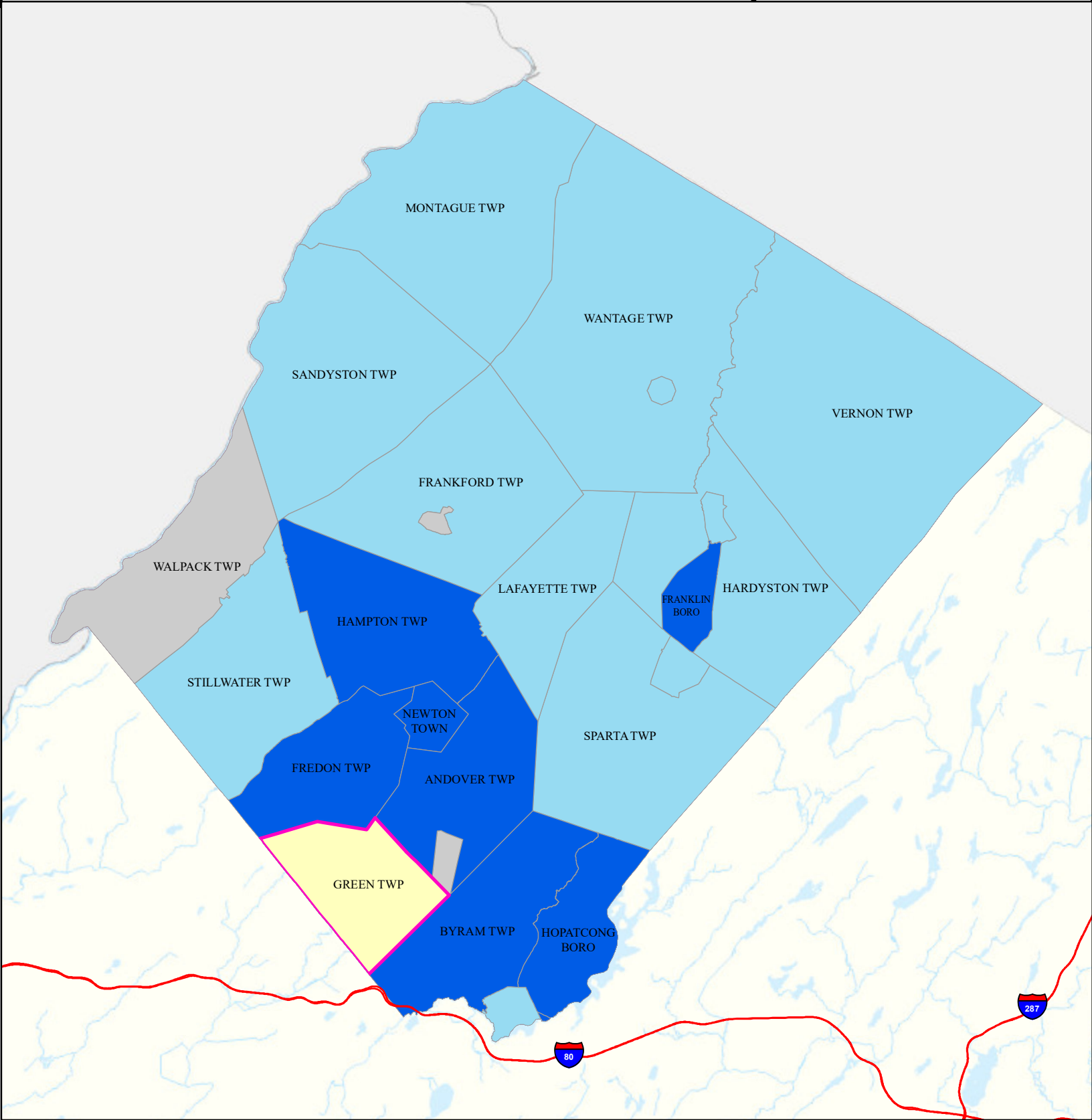
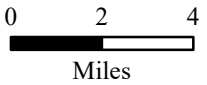
## State Comparison

- Above
- Below
- No Difference
- Suppressed

Age-adjusted Death Rate  
per 100,000 People  
2015 to 2019

Deaths for Heart Disease

Date: 4/16/2022





# COPD (Emergency Department)

Green Twp

Sussex

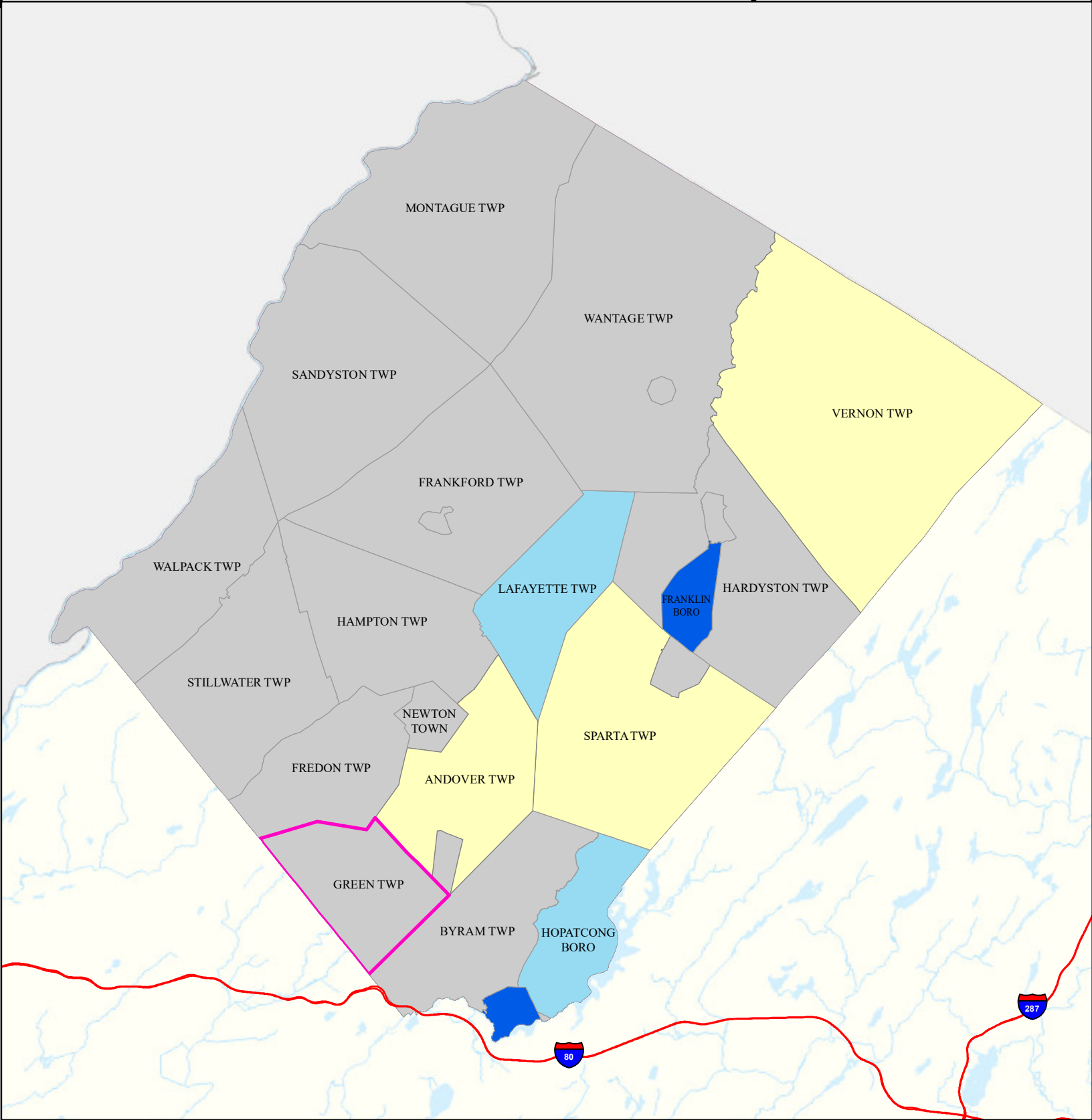
## Legend

- Municipalities
- Green Twp

## State Comparison

- Above
- Below
- No Difference
- Suppressed

Age-adjusted Rate  
per 10,000 People  
2016 to 2019  
Emergency Department  
Visits for COPD



# Stroke (Inpatient)

**Green Twp**

**Sussex**

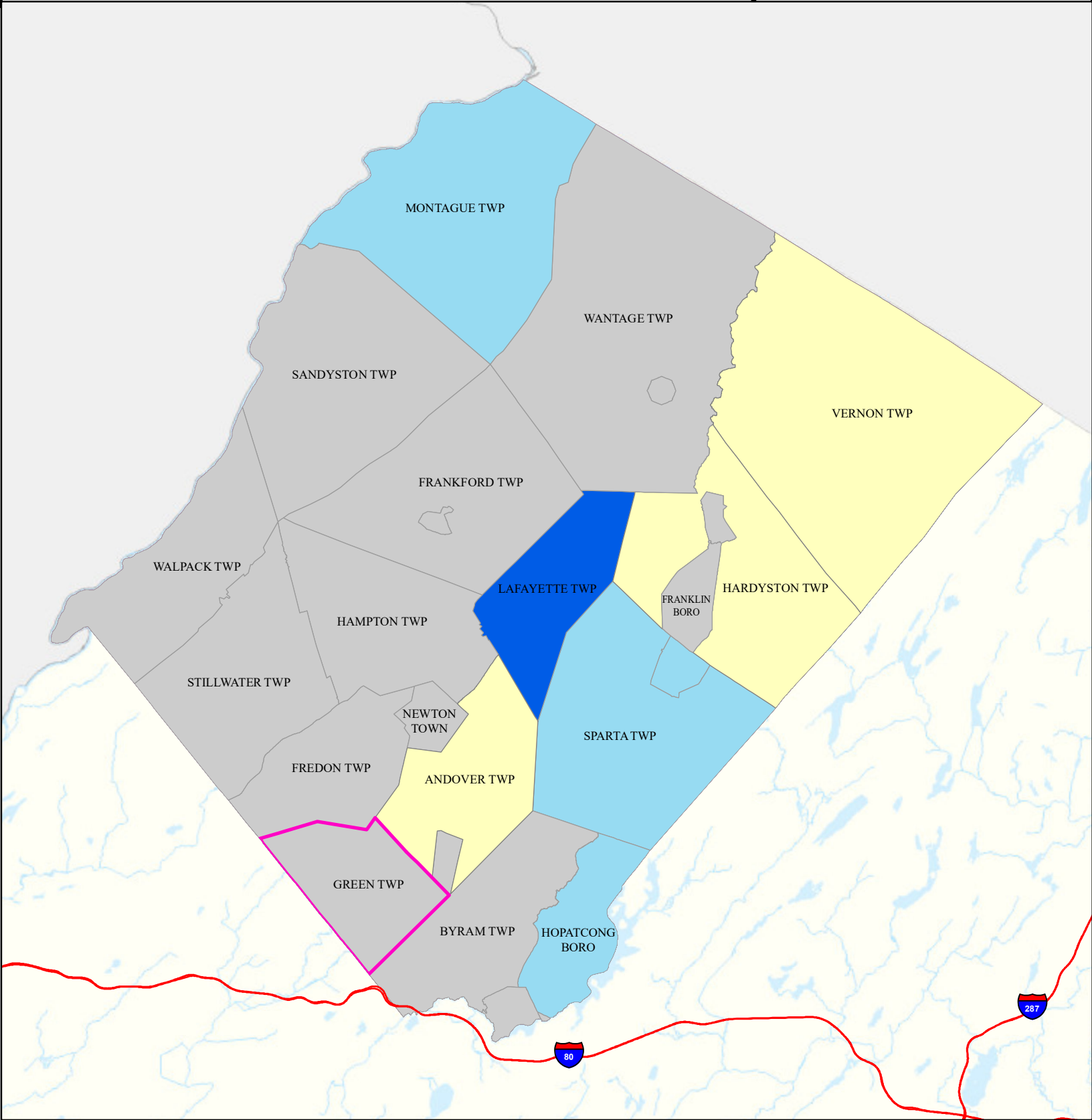
## Legend

- Municipalities
- Green Twp

## State Comparison

- Above
- Below
- No Difference
- Suppressed

Age-adjusted Rate  
per 10,000 People  
2016 to 2019  
Inpatient Visits  
for Stroke



# All Cancer Deaths

**Green Twp**

**Sussex**

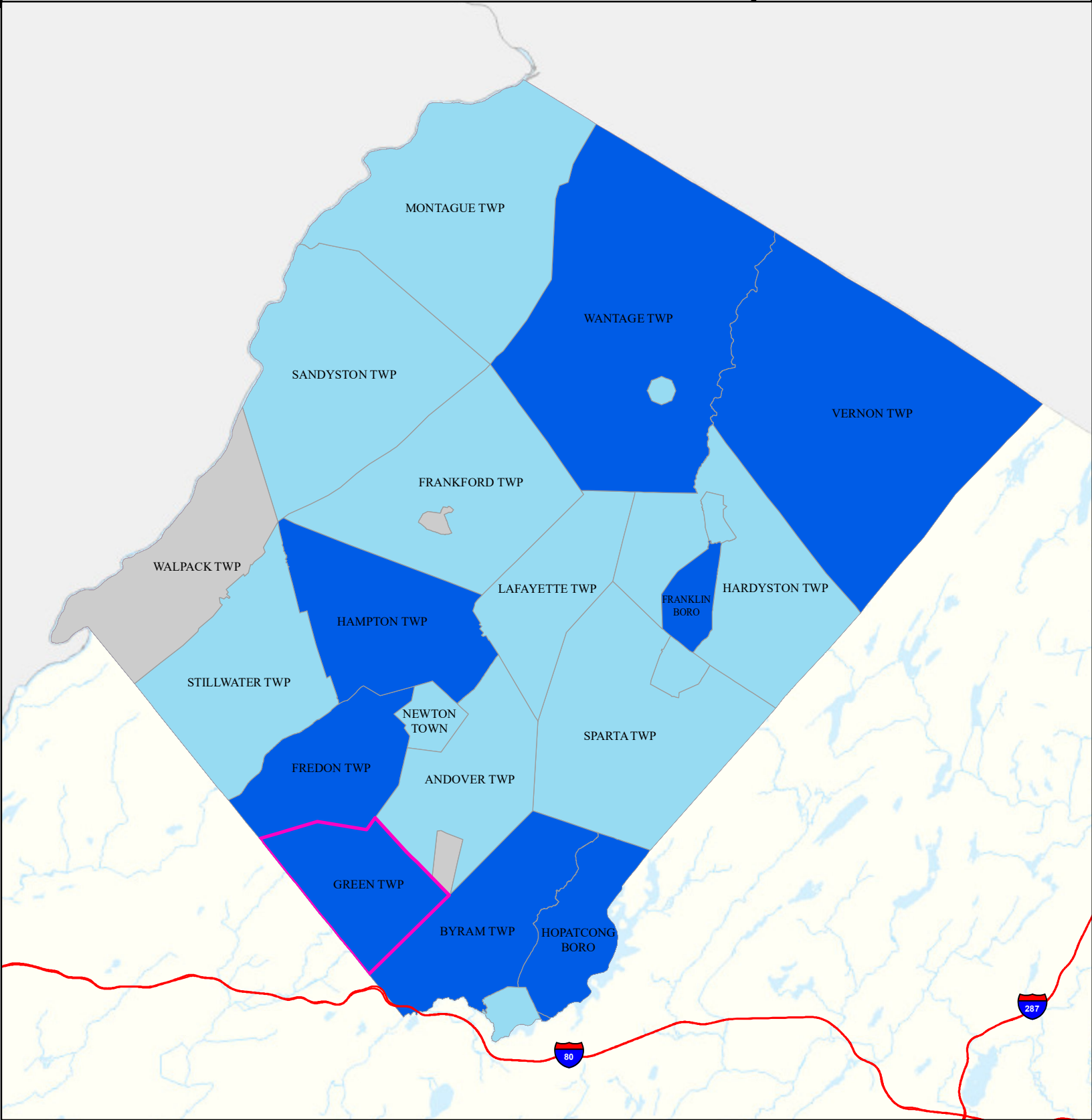
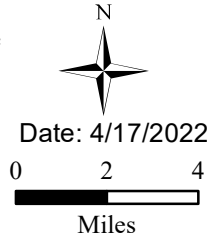
## Legend

- Municipalities
- Green Twp

## State Comparison

- Above
- Below
- No Difference
- Suppressed

Age-adjusted Death Rate  
per 100,000 People  
2015 to 2019  
Deaths for Cancer



# Lung Cancer Deaths

Green Twp

Sussex

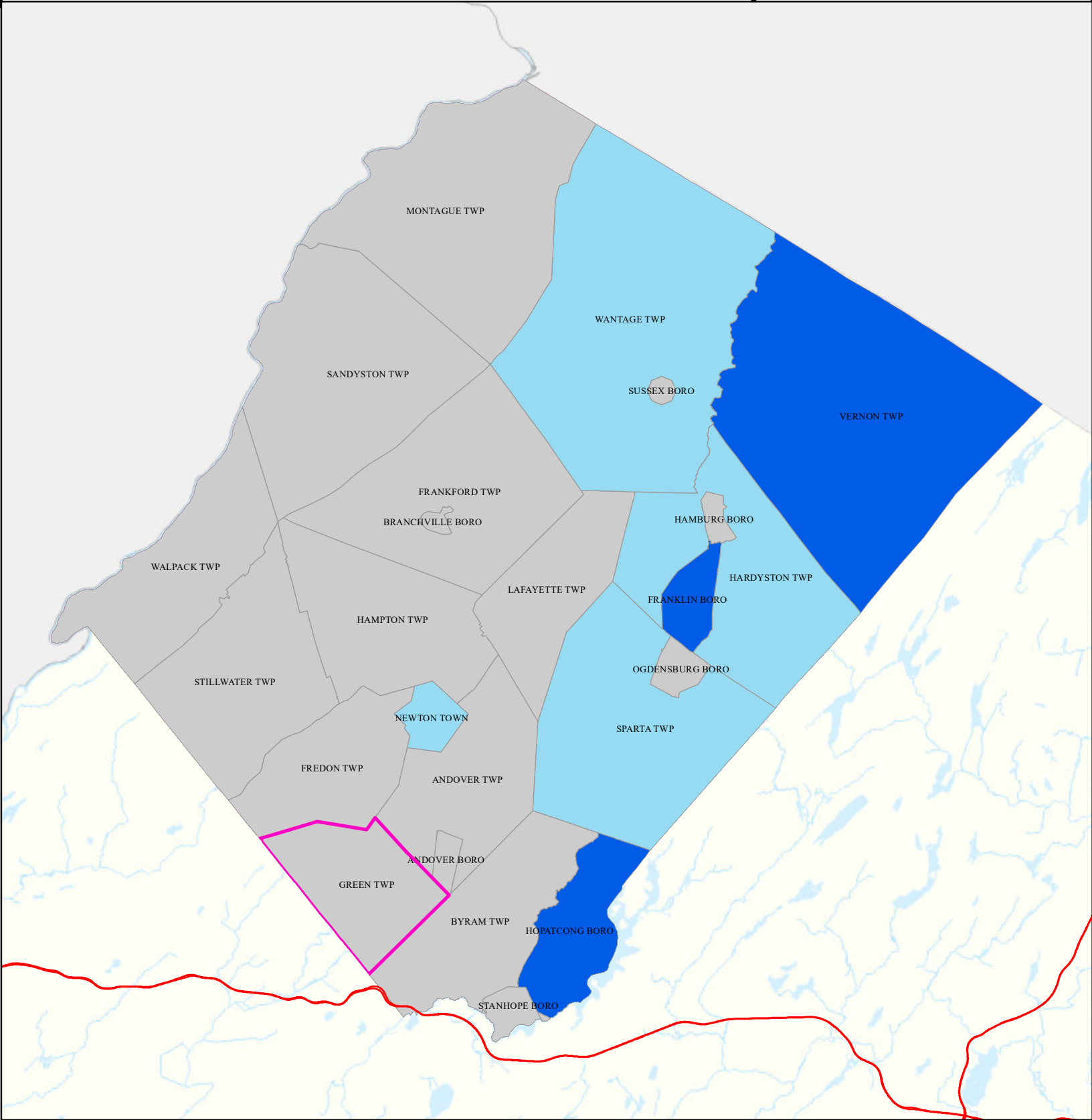
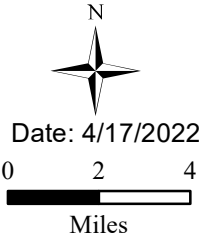
## Legend

- Municipalities
- Green Twp

## State Comparison

- Above
- Below
- No Difference
- Suppressed

Age-adjusted Death Rate  
per 100,000 People  
2015 to 2019  
Deaths for Lung Cancer



# Smoking

Green Twp

Sussex

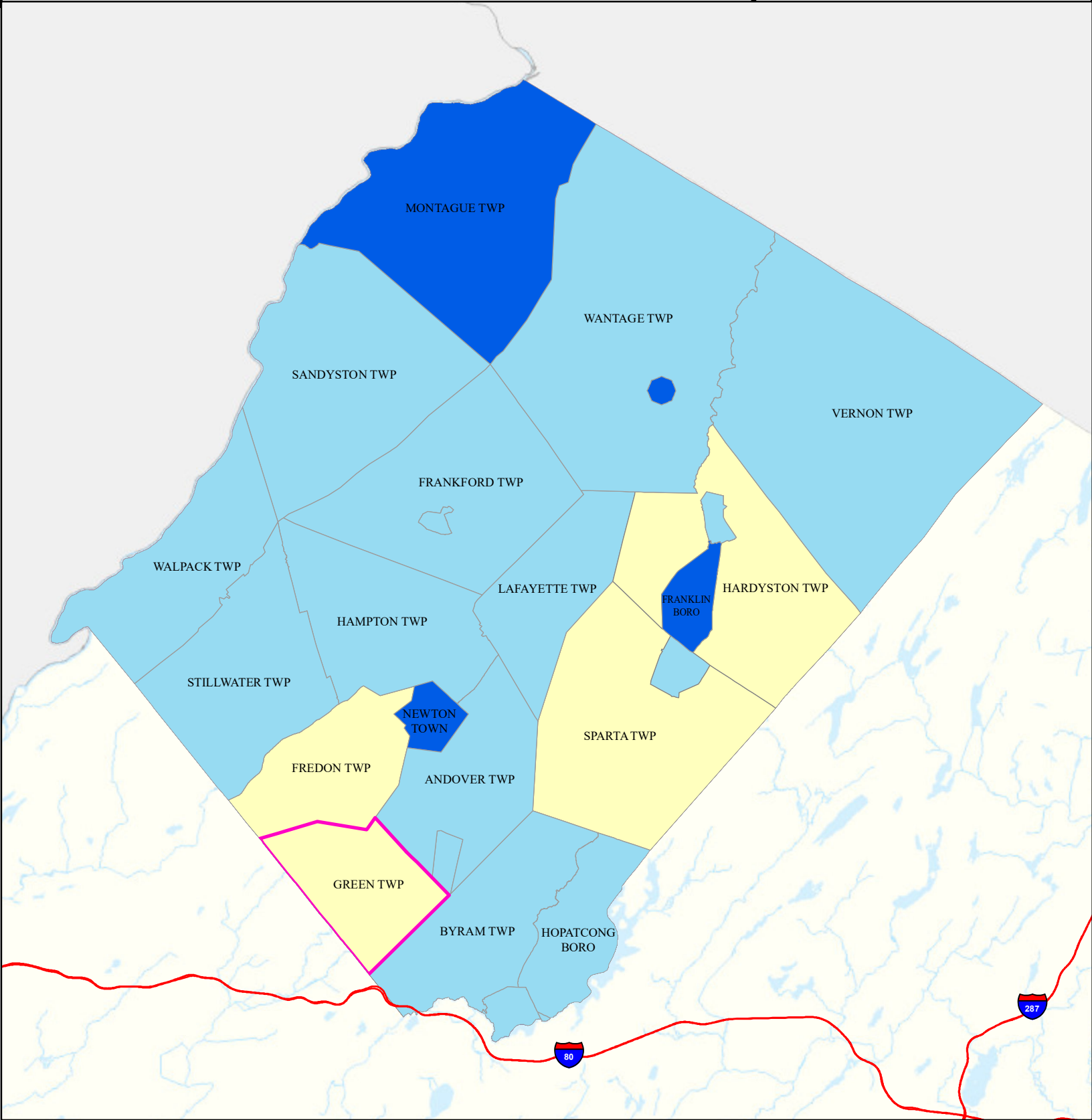
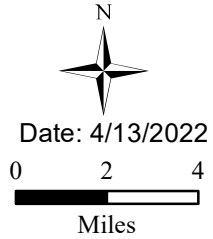
## Legend

- Municipalities
- Green Twp

## State Comparison

- Above
- Below
- No Difference
- Suppressed

Smoking Rate  
Per Municipal  
% of Adults  
2018



# Obesity

**Green Twp**

**Sussex**

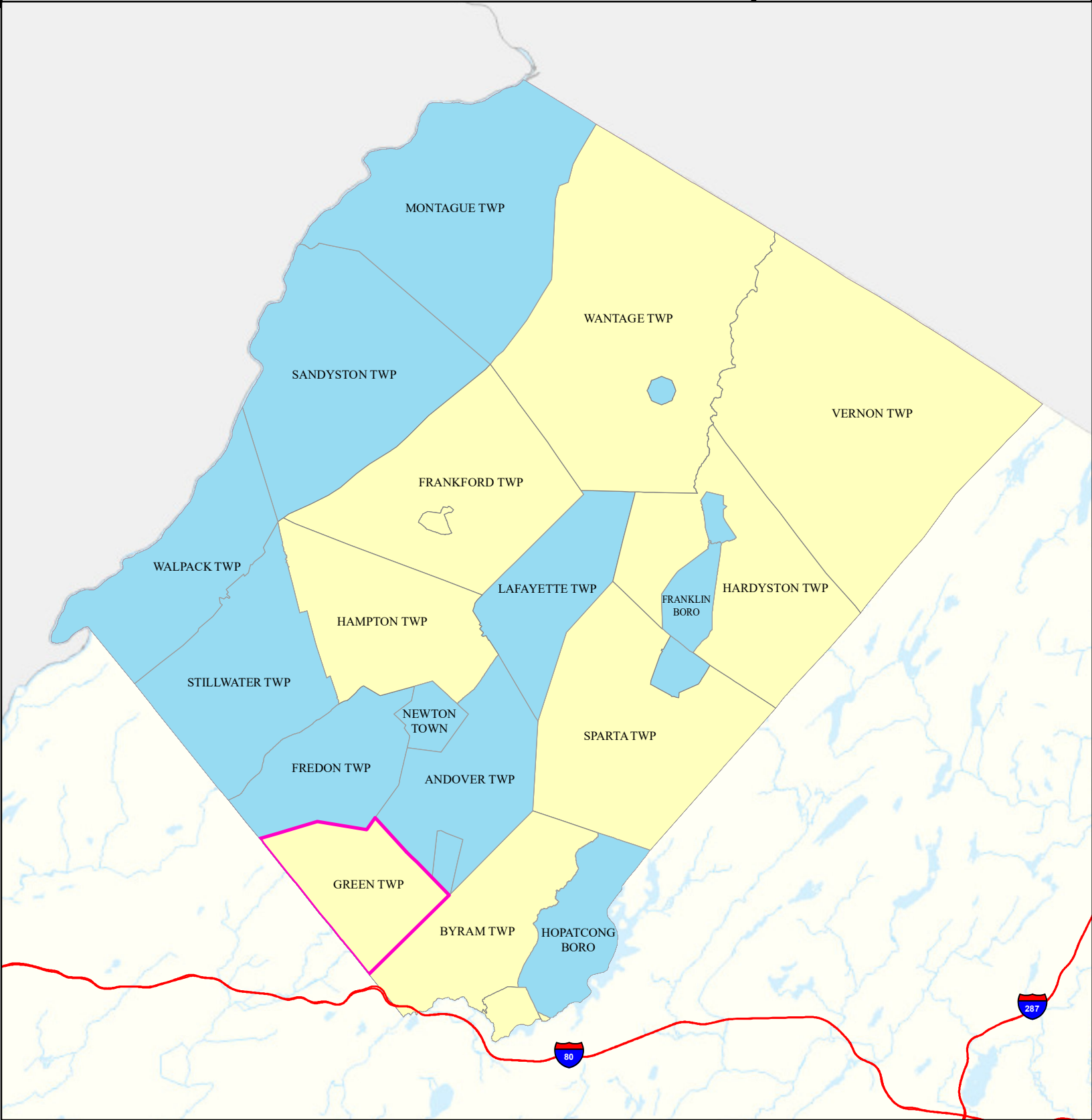
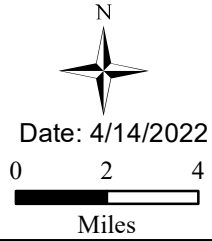
## Legend

- Municipalities
- Green Twp

## State Comparison

- Above
- Below
- No Difference
- Suppressed

Obesity Rate  
Per Municipal  
% of Adults  
2018



# Heat Related Illness (Emergency Department)

**Green Twp**

**Sussex**

## Legend

- Municipalities
- Green Twp

## State Comparison

- Above
- Below
- No Difference
- Suppressed

Age-adjusted Rate per 10,000 People 2016 to 2019  
Emergency Department Visits for Heat Related Illness

