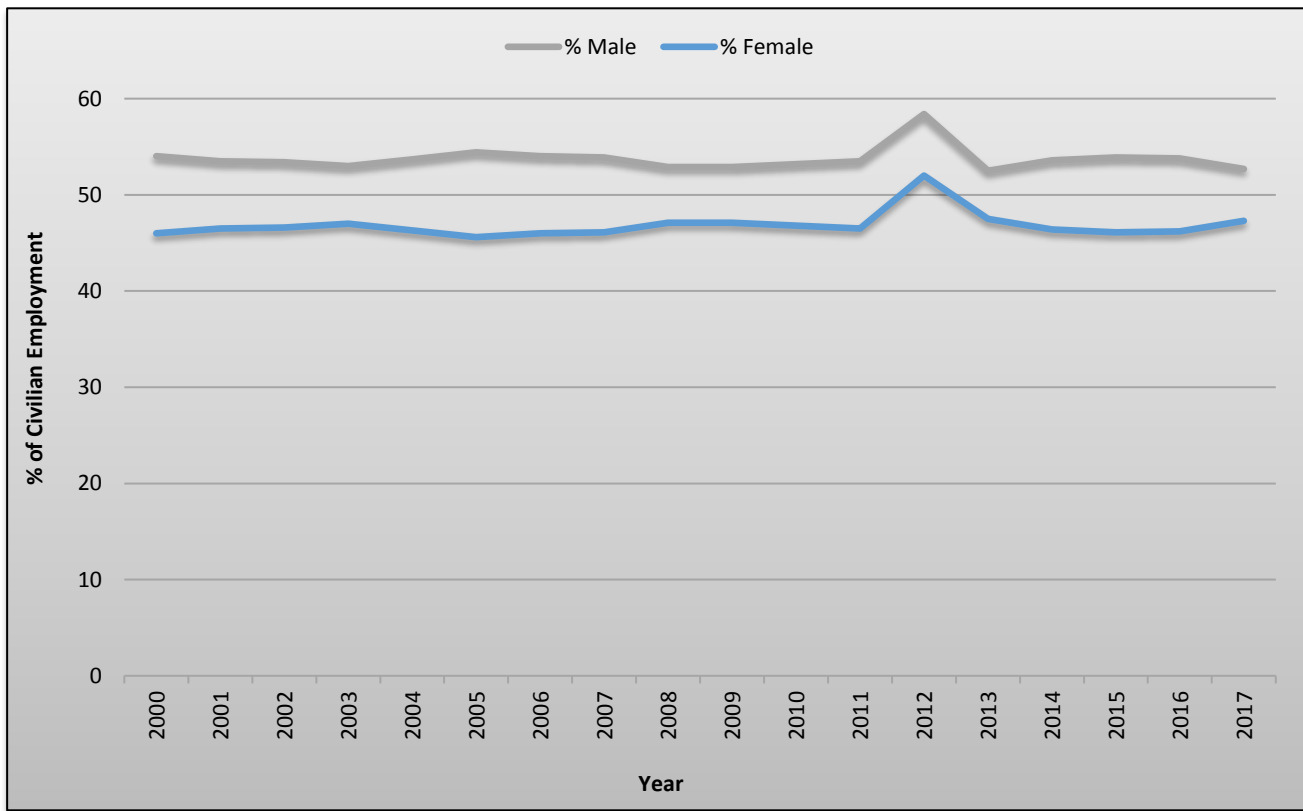


New Jersey Employment Demographics

Percentage of Civilian Employment by Sex, 2000-2017

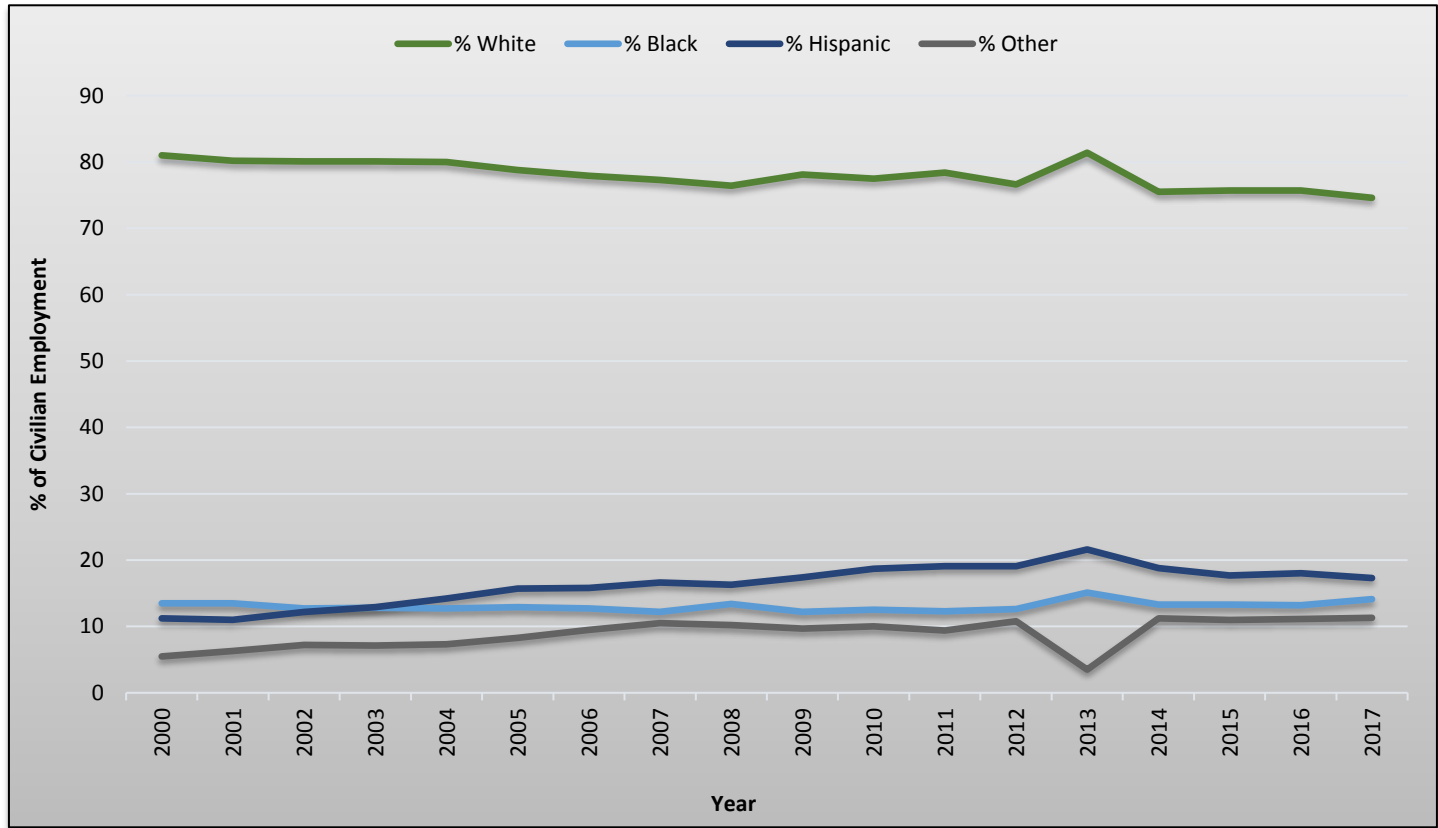


**Percentage of Civilian Employment by
Sex, New Jersey and United States,
2000-2017**

Year	% Male		% Female	
	NJ	US	NJ	US
2000	54.0	53.5	46.0	46.5
2001	53.5	53.4	46.5	46.6
2002	53.4	53.4	46.6	46.6
2003	53.0	53.2	47.0	46.8
2004	53.7	53.5	46.3	46.5
2005	54.4	53.6	45.6	46.4
2006	54.0	53.7	46.0	46.3
2007	53.9	53.6	46.1	46.4
2008	52.9	53.3	47.1	46.7
2009	52.9	52.7	47.1	47.3
2010	53.2	52.8	46.8	47.2
2011	53.5	53.1	46.5	46.9
2012	58.4	53.0	52.0	47.0
2013	52.5	53.0	47.5	47.0
2014	53.6	53.1	46.4	46.9
2015	53.9	53.2	46.1	46.8
2016	53.8	53.2	46.2	46.8
2017	52.7	53.1	47.3	46.9

Data Source: US Bureau of Labor Statistics, Geographic Profile of Employment and Unemployment
[<https://www.bls.gov/opub/geographic-profile/home.htm>]

Percentage of Civilian Employment by Race, 2000-2017

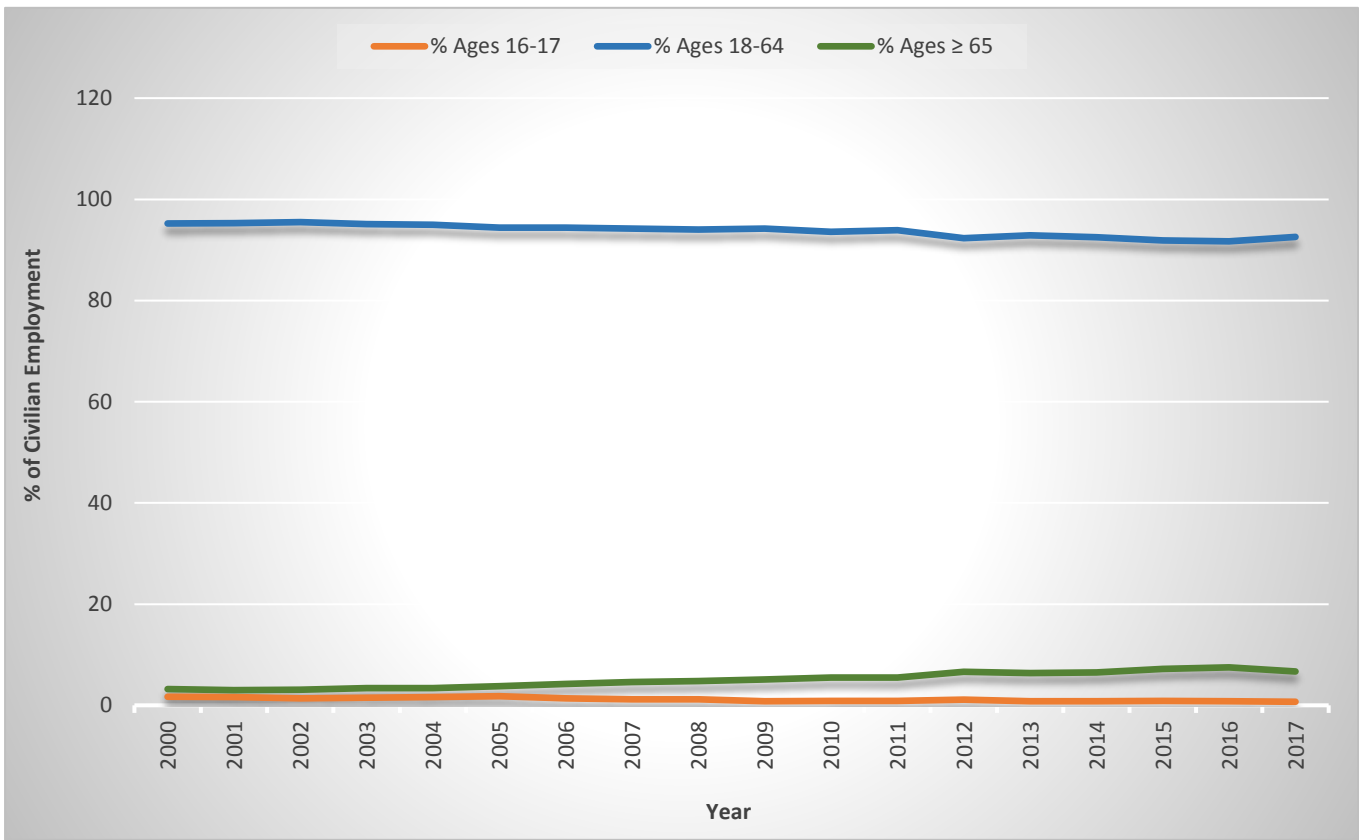


Percentage of Civilian Employment by Race, New Jersey and United States, 2000-2017

Year	% White		% Black		% Other		% Hispanic	
	NJ	US	NJ	US	NJ	US	NJ	US
2000	81	83.9	13.5	11.3	5.5	4.7	11.2	10.7
2001	80.2	83.8	13.5	11.3	6.3	4.9	11.0	10.9
2002	80.1	83.5	12.7	10.9	7.2	5.6	12.2	12.2
2003	80.1	82.9	12.8	10.7	7.1	4.2	12.9	2.2
2004	80.0	82.8	12.7	10.7	7.3	6.5	14.2	12.9
2005	78.8	82.5	12.9	10.8	8.3	6.7	15.7	13.1
2006	77.9	82.3	12.7	10.9	9.5	6.8	15.8	13.6
2007	77.3	82.0	12.2	11.3	10.5	6.7	16.6	14.0
2008	76.4	82.0	13.4	11.0	10.2	7.0	16.3	14.0
2009	78.1	82.2	12.2	10.7	9.7	7.0	17.4	14.0
2010	77.5	82.1	12.5	10.8	10.0	7.1	18.7	14.3
2011	78.4	82.0	12.3	10.8	9.4	7.2	19.1	14.5
2012	76.6	80.6	12.6	11.1	10.8	8.3	19.1	15.4
2013	81.4	80.2	15.1	11.2	3.5	8.6	21.6	15.6
2014	75.5	79.8	13.3	11.4	11.2	8.7	18.8	16.1
2015	75.7	79.2	13.3	11.7	11.0	9.0	17.7	16.4
2016	75.7	78.8	13.2	11.9	11.1	9.3	18.0	16.7
2017	74.6	78.4	14.1	12.1	11.3	9.5	17.3	16.9

Data Source: US Bureau of Labor Statistics, Geographic Profile of Employment and Unemployment [https://www.bls.gov/opub/geographic-profile/home.htm]

Percentage of Civilian Employment by Age Group, 2000-2017



Percentage of Civilian Employment by Age Group, New Jersey and United States, 2000-2017

Year	% Ages 16-17		% Ages 18-64		% Ages ≥ 65	
	NJ	US	NJ	US	NJ	US
2000	1.7	2.7	95.2	94.2	3.2	3.1
2001	1.6	2.6	95.3	94.3	3.0	3.1
2002	1.4	1.7	95.5	95.1	3.1	3.2
2003	1.5	1.7	95.1	95.0	3.4	3.3
2004	1.6	1.6	95.0	95.0	3.4	3.5
2005	1.8	1.6	94.4	94.8	3.8	3.6
2006	1.4	1.7	94.4	94.6	4.2	3.7
2007	1.2	1.6	94.2	94.6	4.6	3.8
2008	1.2	1.4	94.0	94.5	4.8	4.1
2009	0.8	1.2	94.2	94.4	5.1	4.4
2010	0.9	1.0	93.6	94.5	5.5	4.5
2011	0.9	1.0	93.9	94.2	5.5	4.8
2012	1.1	1.0	92.3	93.9	6.6	5.1
2013	0.8	1.0	92.9	93.6	6.4	5.3
2014	0.8	1.1	92.5	93.5	6.5	5.4
2015	0.9	1.1	91.9	93.2	7.2	5.7
2016	0.8	1.2	91.7	93.0	7.5	5.9
2017	0.7	1.2	92.6	92.7	6.7	6.0

Data Source: NIOSH Employed Labor Force (ELF) [<https://wwwn.cdc.gov/wisards/cps/>]