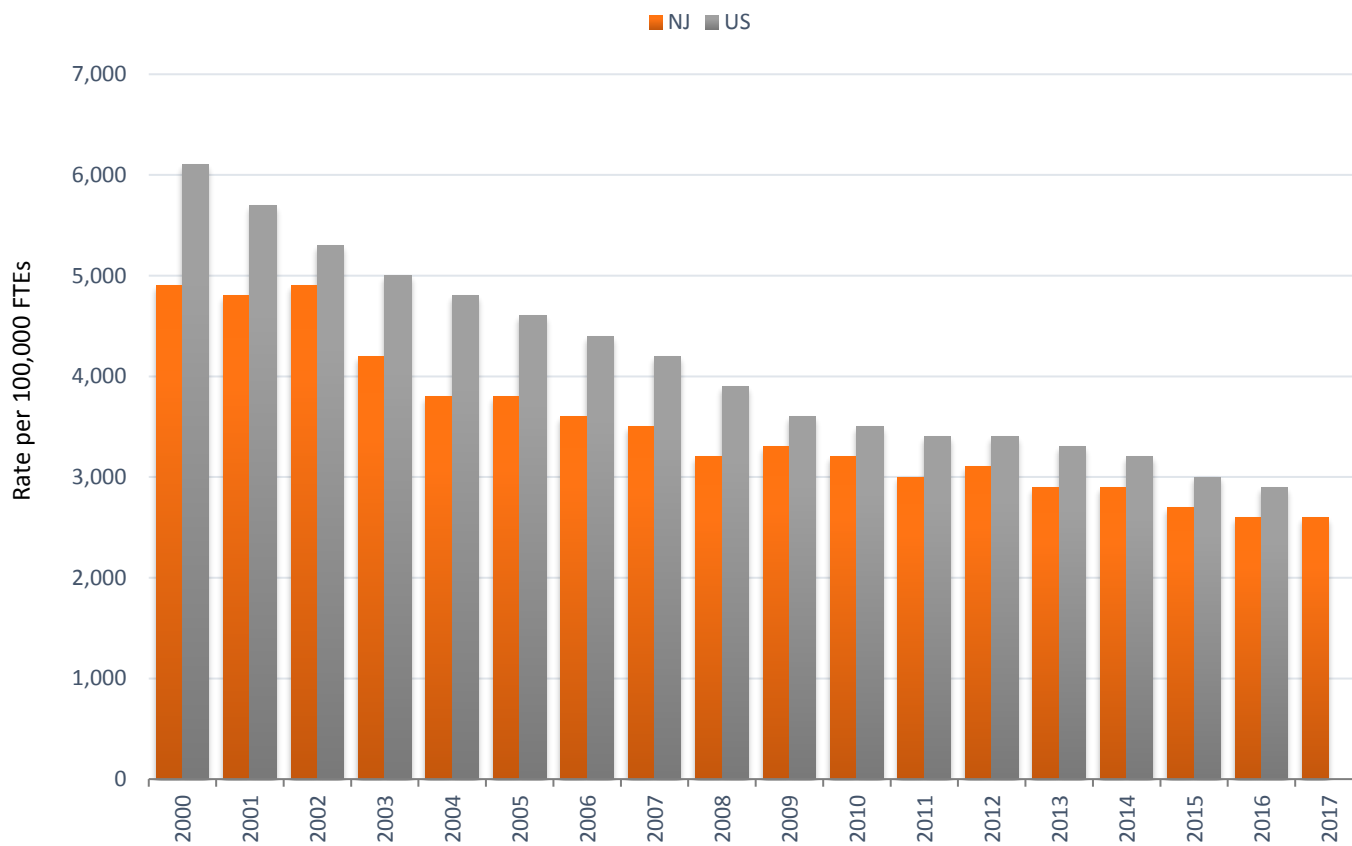


OHI #1: Non-Fatal Work-Related Injuries and Illnesses Reported by Employers

Estimated Annual Total Work-Related Injury and Illness Incidence Rate\*,  
New Jersey and United States, 2000-2017



\*Rate per 100,000 Full-Time Equivalent (FTEs) workers per year

**Estimated Annual Total Number and Incidence Rate\* of Non-Fatal Work-Related Injuries and Illnesses, New Jersey and United States, 2000-2017**

Year	Number		Rate*	
	NJ	US	NJ	US
2000	132,500	5,650,100	4,900	6,100
2001	129,200	5,215,600	4,800	5,700
2002	151,000	4,700,600	4,900	5,300
2003	113,500	4,365,200	4,200	5,000
2004	102,500	4,257,300	3,800	4,800
2005	104,400	4,214,200	3,800	4,600
2006	97,400	4,085,400	3,600	4,400
2007	94,800	4,002,700	3,500	4,200
2008	88,700	3,696,100	3,200	3,900
2009	87,400	3,277,700	3,300	3,600
2010	82,500	3,063,400	3,200	3,500
2011	76,700	3,034,500	3,000	3,400
2012	80,900	3,027,600	3,100	3,400
2013	78,000	3,007,300	2,900	3,300
2014	77,900	2,953,500	2,900	3,200
2015	72,000	2,905,900	2,700	3,000
2016	72,500	2,857,400	2,600	2,900
2017	71,700	N/A	2,600	N/A

\*Rate per 100,000 FTEs

N/A: not available

Note: Caution should be taken when comparing data to other states or with national estimates due to differences in industry concentration and sample size.

Data Source: US Bureau of Labor Statistics, Annual Survey of Occupational Injuries & Illnesses (SOII) [<https://www.bls.gov/respondents/iif/>]