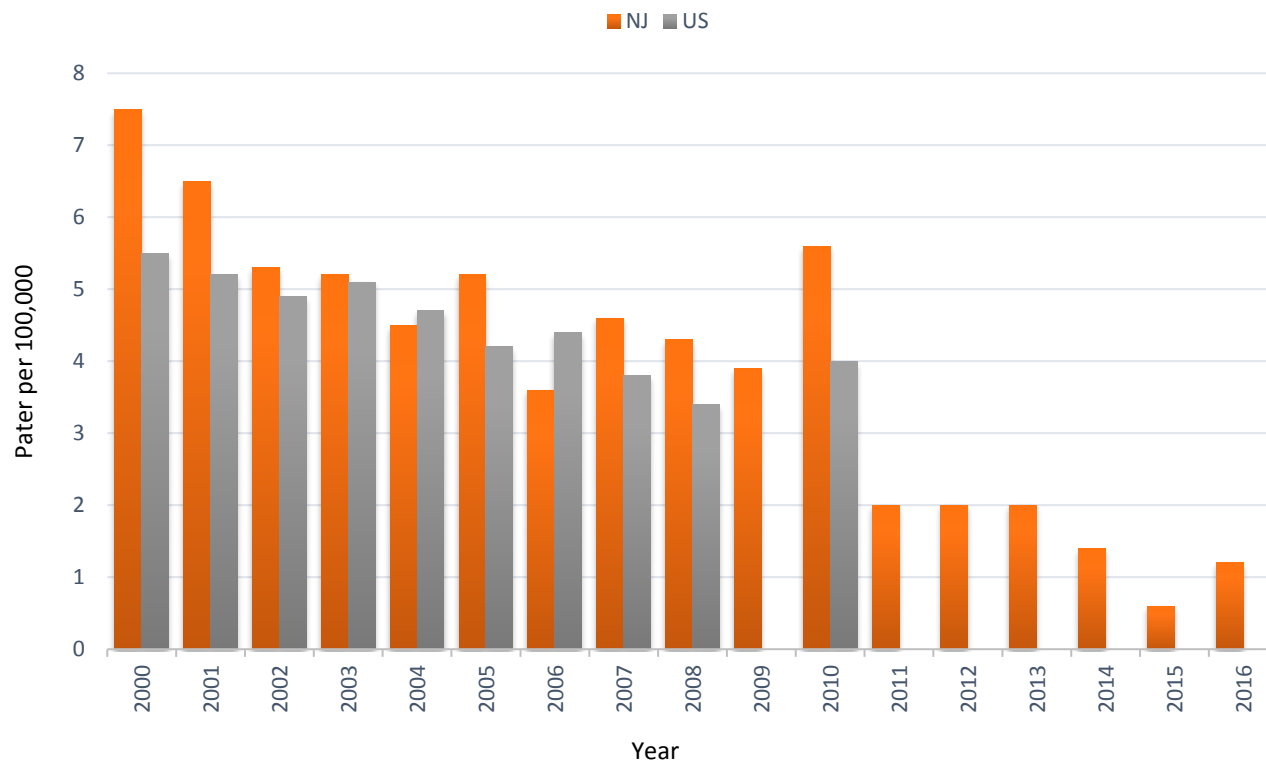


OHI #13: Elevated Blood Lead Levels (BLL) Among Adults

Annual Incidence Rate* of Residents with Elevated Blood Lead Levels ($\geq 25 \mu\text{g/dL}$), New Jersey and United States, 2000-2016



*Rate per 100,000 employed persons, age 16 years or older

Annual Number and Incidence Rate* of
Residents with Elevated Blood Lead Levels
(≥ 25 µg/dL), New Jersey and United States,
2000-2016

Year	Number		Rate*	
	NJ	US	NJ	US
2000	304	4,852	7.5	5.5
2001	259	4,225	6.5	5.2
2002	216	5,738	5.3	4.9
2003	212	6,143	5.2	5.1
2004	187	5,671	4.5	4.7
2005	222	5,197	5.2	4.2
2006	155	5,666	3.6	4.4
2007	166	4,906	4.6	3.8
2008	184	4,470	4.3	3.4
2009	160	N/A	3.9	N/A
2010	203	5,105	5.6	4.0
2011	100	N/A	2.0	N/A
2012	88	N/A	2.0	N/A
2013	91	N/A	2.0	N/A
2014	59	N/A	1.4	N/A
2015	24	N/A	0.6	N/A
2016	51	N/A	1.2	N/A

* Rate per 100,000 employed persons, age 16 years or older

N/A: not available

Data Source: NJ Adult Blood Lead Epidemiology Surveillance (ABLES) Project; Bureau of Labor Statistics, Geographic Profile of Employment and Unemployment [<https://www.bls.gov/opub/geographic-profile/home.htm>]