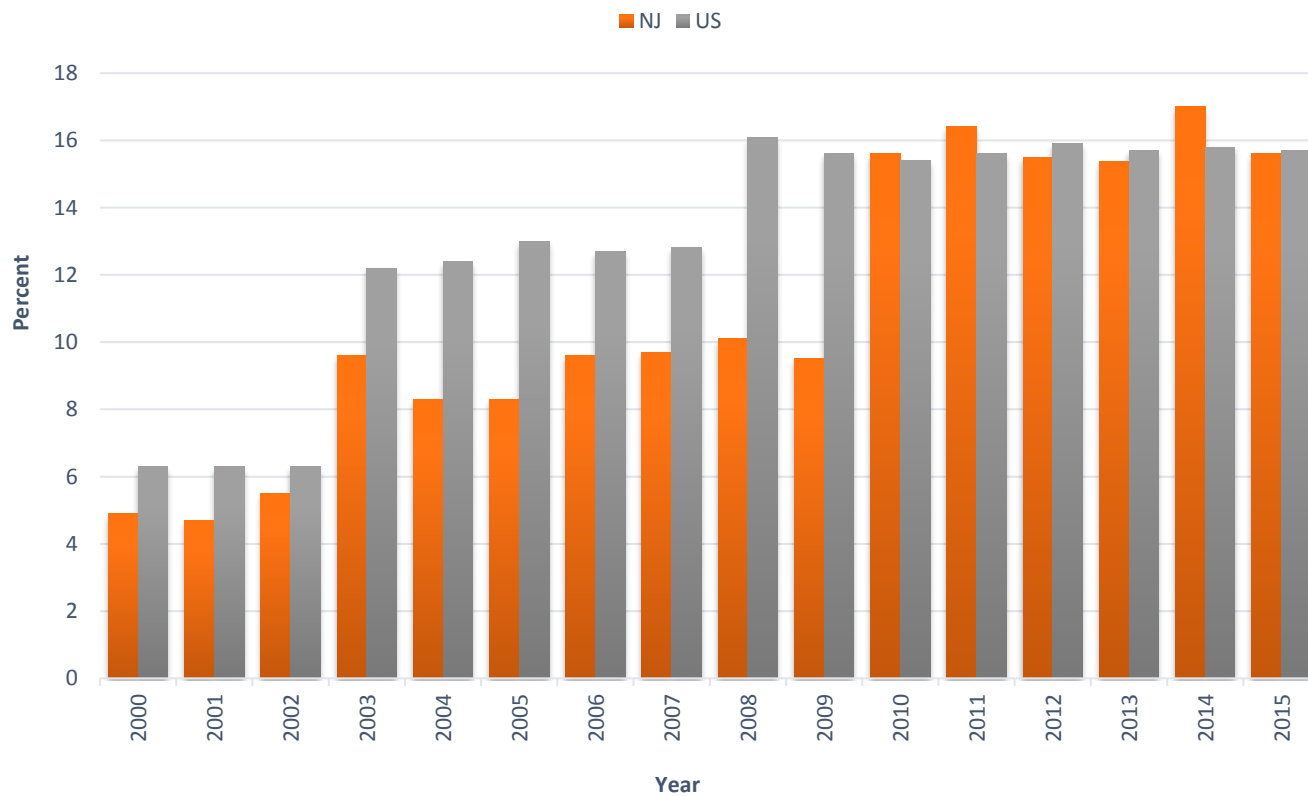


OHI #15: Percentage of Workers Employed in Occupations at High Risk for Occupational Morbidity

Percentage of Workers Employed in Occupations* at High Risk for Occupational Morbidity, New Jersey and United States, 2000-2015



*Occupations are based on Bureau of Labor Statistics “days away from work” cases and employment estimates for private sector workers.

**Number and Percentage of Workers
Employed in Occupations at High Risk for
Occupational Morbidity, New Jersey and
United States, 2000-2015**

Year	Number		Percent	
	NJ	US	NJ	US
2000	197,938	8,165,899	4.9	6.3
2001	186,751	8,141,210	4.7	6.3
2002	217,939	8,086,773	5.5	6.3
2003	397,770	12,595,944	9.6	12.2
2004	347,689	12,854,488	8.3	12.4
2005	389,567	13,704,562	8.3	13.0
2006	411,460	13,688,328	9.6	12.7
2007	421,168	13,953,757	9.7	12.8
2008	432,581	18,373,120	10.1	16.1
2009	394,229	16,949,831	9.5	15.6
2010	489,035	16,679,132	15.6	15.4
2011	523,807	17,073,089	16.4	15.6
2012	497,634	17,842,481	15.5	15.9
2013	498,543	17,053,040	15.4	15.7
2014	560,223	17,605,210	17.0	15.8
2015	515,227	17,778,497	15.6	15.7

Data Source: US Bureau of Labor Statistics, Current Population Survey, Employed Labor Force (ELF) Query System
[<https://wwwn.cdc.gov/wisards/cps/>]