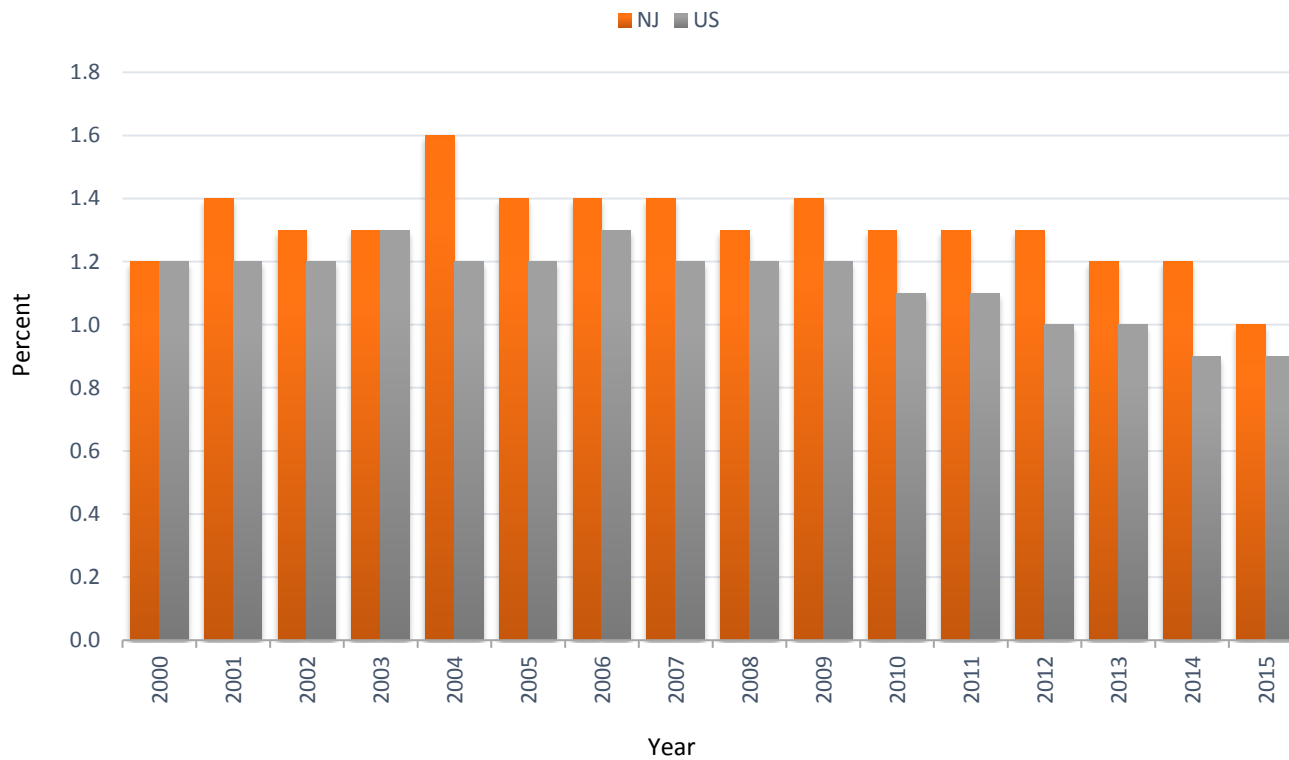


OHI #18: Occupational Safety and Health Administration (OSHA) Enforcement Activities

Percentage of OSHA Covered Establishments* Eligible for Inspection that were Inspected by OSHA, 2000-2015



*Excluding mines and farms

Number and Percentage of OSHA Covered
Establishments that are Eligible for
Inspection, New Jersey and United States,
2000-2015

Year	Number		Percentage	
	NJ	US	NJ	US
2000	3,332	90,579	1.2	1.2
2001	3,582	87,881	1.4	1.2
2002	3,216	93,890	1.3	1.2
2003	3,494	99,153	1.3	1.3
2004	3,835	96,838	1.6	1.2
2005	3,813	96,238	1.4	1.2
2006	3,709	107,610	1.4	1.3
2007	3,800	104,010	1.4	1.2
2008	3,573	100,548	1.3	1.2
2009	3,635	100,245	1.4	1.2
2010	3,448	98,788	1.3	1.1
2011	3,460	93,231	1.3	1.1
2012	3,243	91,550	1.3	1.0
2013	3,165	88,239	1.2	1.0
2014	3,011	83,701	1.2	0.9
2015	2,670	79,281	1.0	0.9

Data Source: OSHA annual reports of total inspections conducted, and the number of workers covered by these inspections; Bureau of Labor Statistics' data on Covered Employers and Wages (ES-202/QCEW) [<http://www.bls.gov/cew/home.htm>]