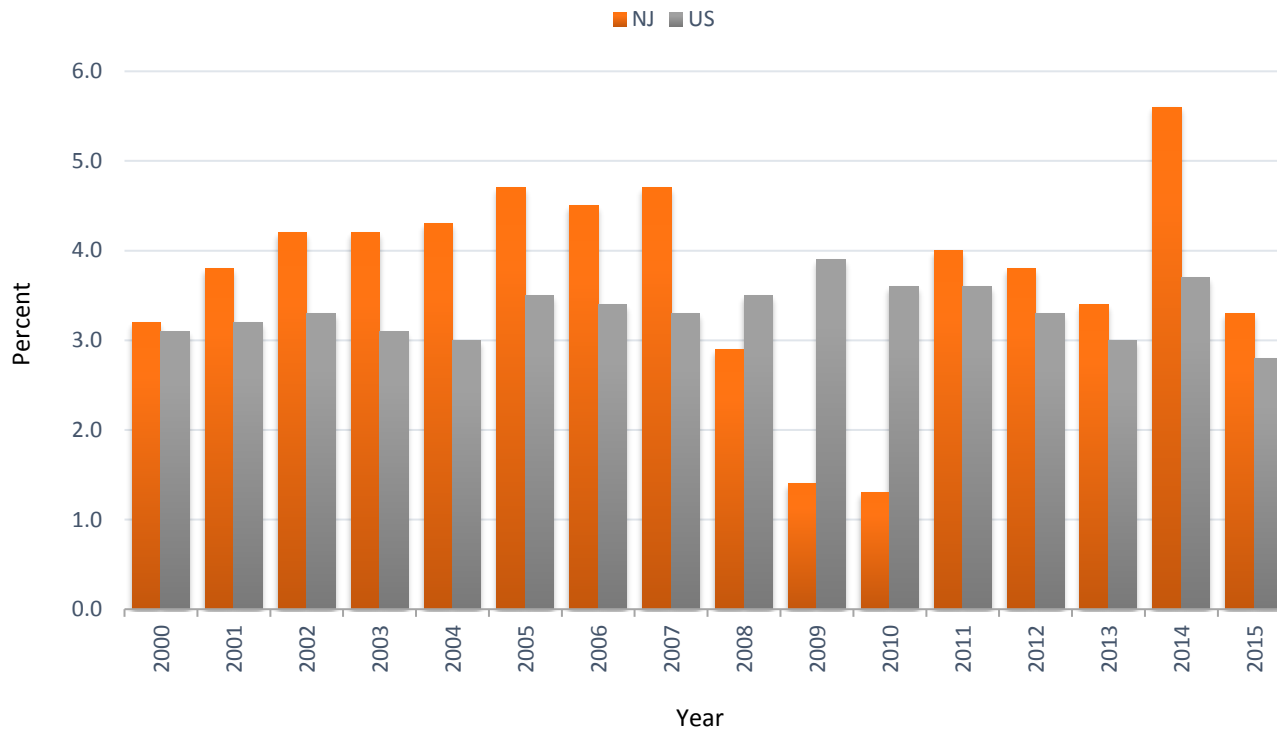


OHI #18: Occupational Safety and Health Administration (OSHA) Enforcement Activities

Percentage of OSHA Covered Employees\* in the State that are Eligible for Inspection Whose Work Areas were Inspected by OSHA, 2000-2015



\*Excluding miners and farmers

Number and Percentage of OSHA Covered  
Employees Eligible for Inspection, New Jersey  
and United States, 2000-2015

Year	Number		Percentage	
	NJ	US	NJ	US
2000	123,661	3,370,618	3.2	3.1
2001	146,142	3,435,512	3.8	3.2
2002	139,986	3,481,170	4.2	3.3
2003	160,469	3,915,466	4.2	3.1
2004	154,788	3,905,987	4.3	3.0
2005	181,748	3,777,751	4.7	3.5
2006	151,872	3,756,054	4.5	3.4
2007	186,500	3,769,881	4.7	3.3
2008	113,876	3,961,060	2.9	3.5
2009	523,456	4,107,815	1.4	3.9
2010	149,571	3,739,298	1.3	3.6
2011	149,606	3,799,759	4.0	3.6
2012	141,344	3,637,571	3.8	3.3
2013	130,729	3,301,630	3.4	3.0
2014	213,333	4,235,194	5.6	3.7
2015	127,189	3,262,194	3.3	2.8

Data Source: OSHA annual reports of total inspections conducted, and the number of workers covered by these inspections; Bureau of Labor Statistics' data on Covered Employers and Wages (ES-202/QCEW) [<http://www.bls.gov/cew/home.htm>]