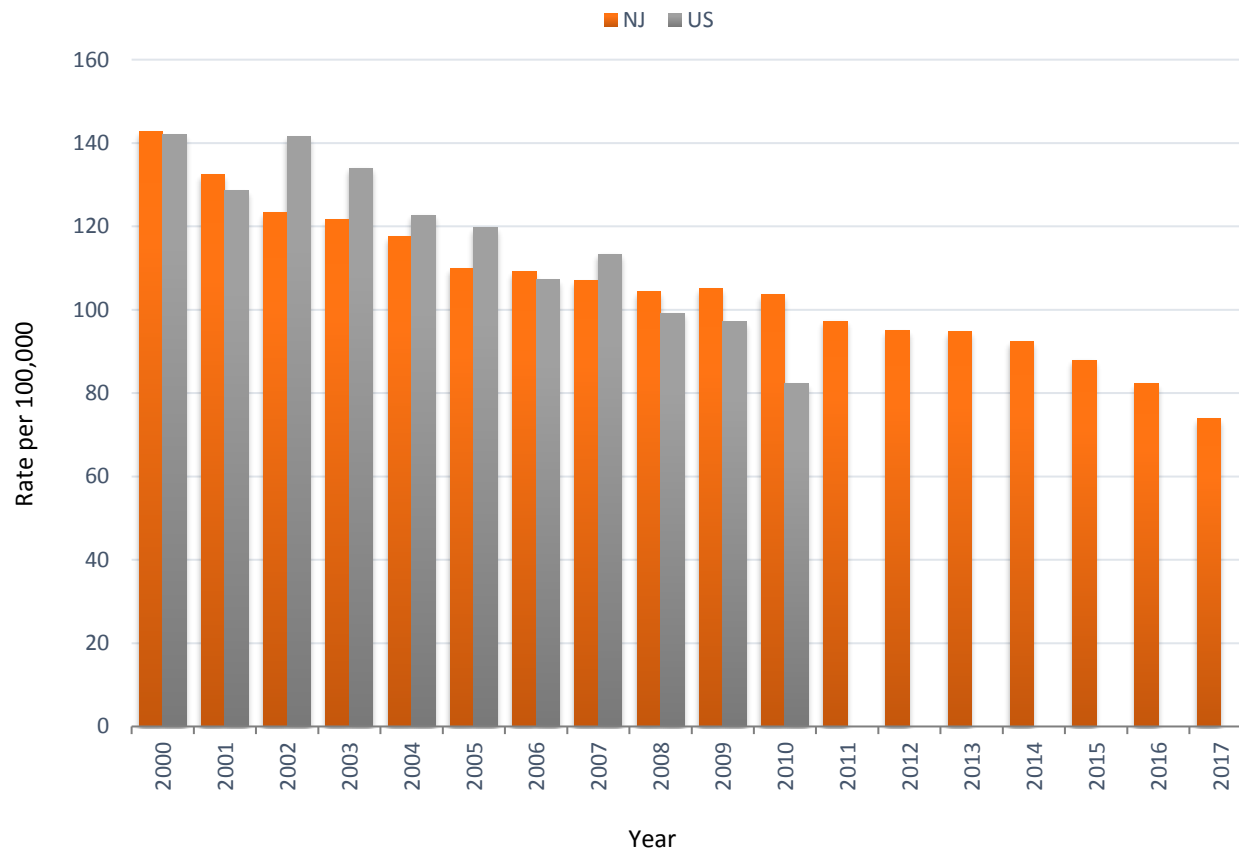


## OHI #2: Work-Related Hospitalizations

Annual Crude Rate\* of Inpatient Hospitalizations, 2000-2017



\*Rate per 100,000 employed persons age 16 years or older

## Annual Number and Crude Rate\* of Inpatient Hospitalizations, New Jersey and United States, 2000-2017

Year	Number		Rate*	
	NJ	US	NJ	US
2000	5,754	192,109	142.8	142.0
2001	5,304	173,724	132.5	128.6
2002	5,070	193,752	123.3	141.5
2003	5,008	184,986	121.6	134.0
2004	4,907	170,796	117.4	122.7
2005	4,664	169,814	109.9	119.8
2006	4,682	154,877	109.1	107.2
2007	4,587	165,441	107.0	113.3
2008	4,451	144,184	104.5	99.2
2009	4,355	135,825	105.1	97.1
2010	4,249	114,242	103.6	82.2
2011	4,045	N/A	97.3	N/A
2012	3,945	N/A	94.9	N/A
2013	3,937	N/A	94.8	N/A
2014	3,900	N/A	92.4	N/A
2015	3,753	N/A	87.9	N/A
2016	3,539	N/A	82.2	N/A
2017	3,178	N/A	73.9	N/A

\*Rate per 100,000 employed persons age 16 years or older

N/A: not available

Note: Caution should be taken when comparing data to other states or with national estimates due to workers' compensation (WC) eligibility criteria and availability of data from WC programs varying among states.

Data Source: New Jersey Department of Health inpatient hospital discharge data; US Bureau of Labor Statistics, Geographic Profile of Employment and Unemployment [<https://www.bls.gov/gps/>]