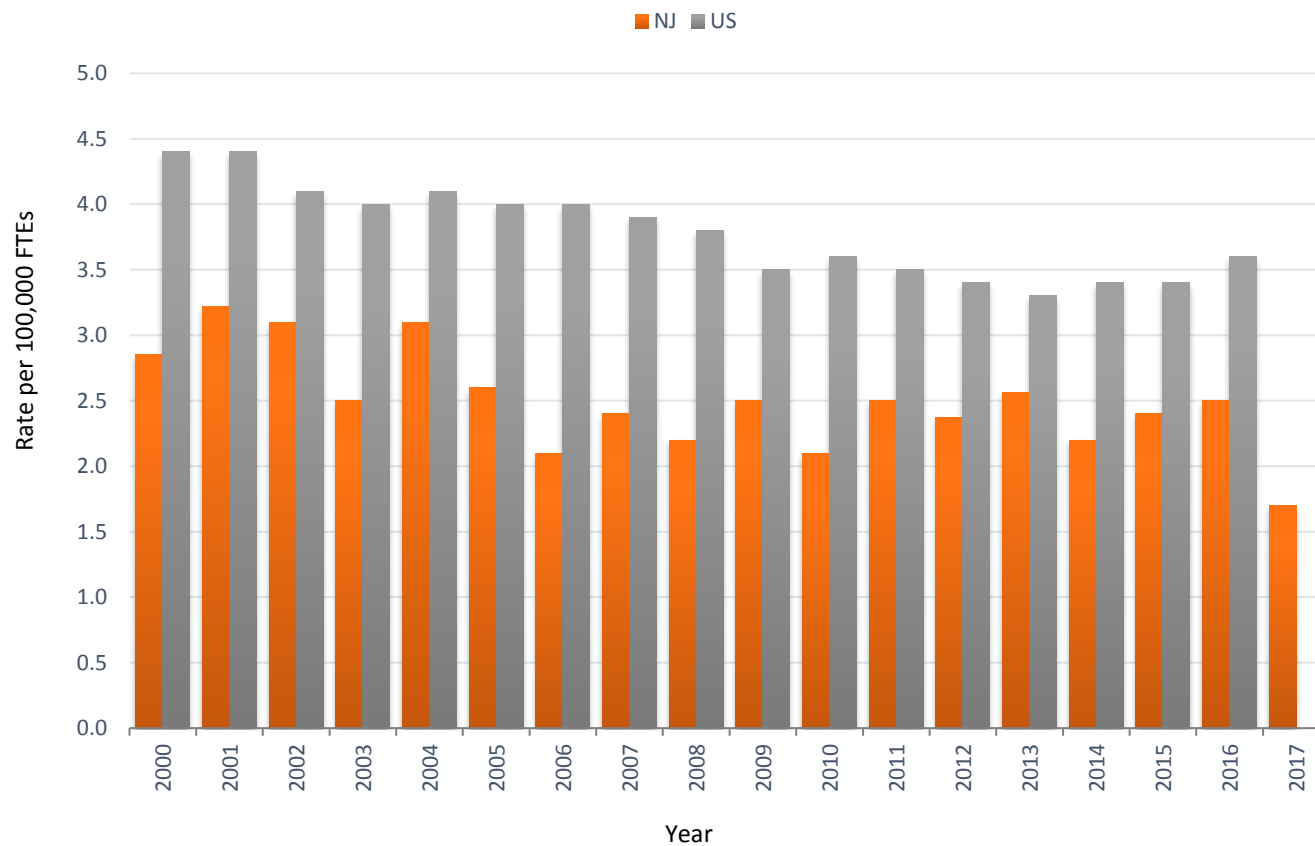


OHI #3: Fatal Work-Related Injuries

Annual Crude Fatality Rate* of Workers, New Jersey and United States, 2000-2017



*Rate per 100,000 Full-Time Equivalent (FTEs) workers age 16 years or older

**Annual Number and Crude Fatality Rate* of
Workers, New Jersey and United States,
2000-2017**

Year	Number		Rate*	
	NJ	US	NJ	US
2000	115	5,920	2.9	4.4
2001	129	5,900	3.2	4.4
2002	129	5,534	3.1	4.1
2003	104	5,575	2.5	4.0
2004	129	5,764	3.1	4.1
2005	112	5,734	2.6	4.0
2006	88	5,840	2.1	4.0
2007	106	5,567	2.4	3.9
2008	92	5,214	2.2	3.8
2009	99	4,551	2.5	3.5
2010	81	4,690	2.1	3.6
2011	99	4,693	2.5	3.5
2012	92	4,628	2.4	3.4
2013	101	4,585	2.6	3.3
2014	87	4,821	2.2	3.4
2015	97	4,836	2.4	3.4
2016	101	5,190	2.5	3.6
2017	69	N/A	1.7	N/A

*Rate per 100,000 FTEs age 16 years or older

N/A: not available

Data Source: US Bureau of Labor Statistics, Census of Fatal Occupational Injuries (CFOI) [<https://www.bls.gov/iif/oshstate.htm>]; NIOSH Employed Labor Force (ELF) database [<https://wwwn.cdc.gov/wisards/cps/default.aspx>]