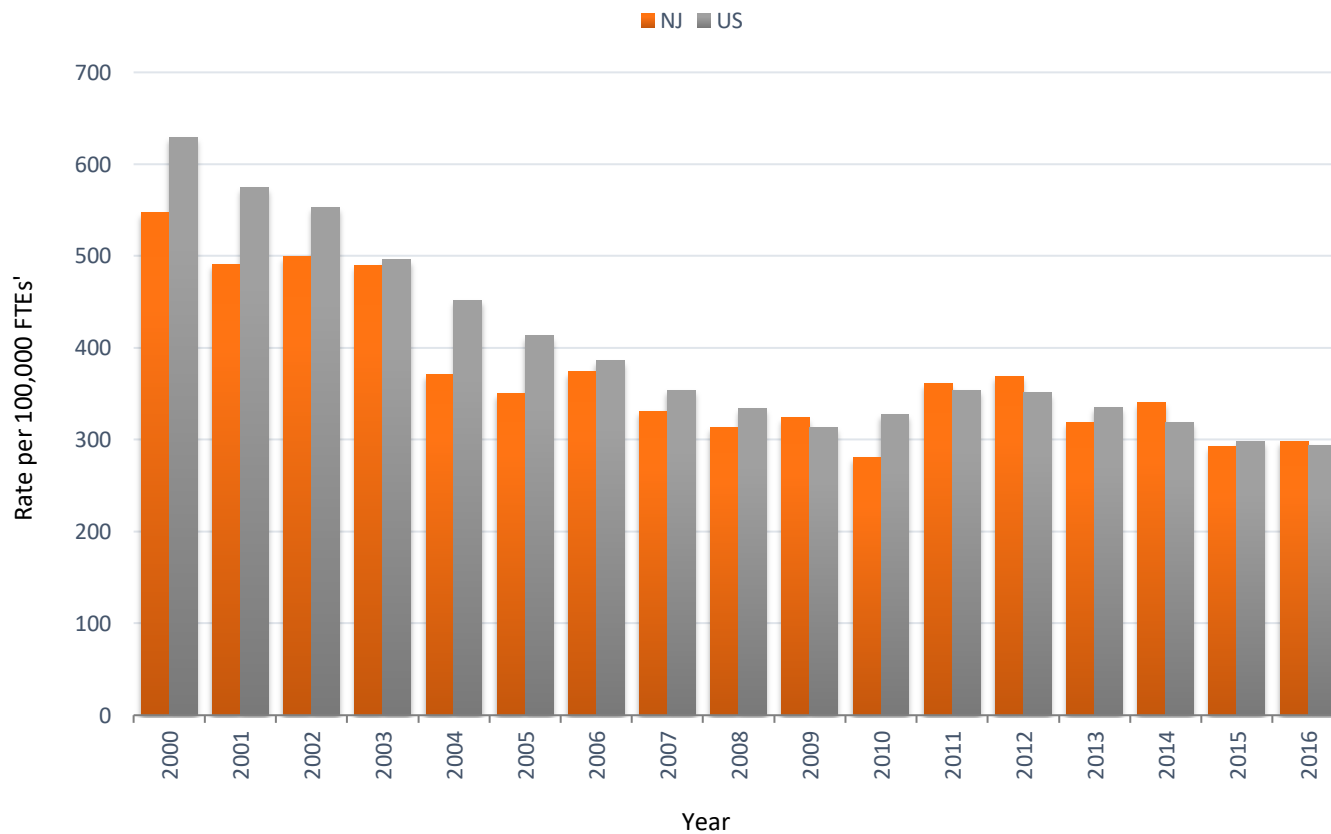


OHI #7: Work-Related Musculoskeletal Disorders with Days Away from Work Reported by Employers

Estimated Annual Incidence Rate* of All Musculoskeletal Disorders Involving Days Away from Work, New Jersey and United States, 2000-2016



*Rate per 100,000 Full-Time Equivalents (FTEs)

Estimated Annual Number and Incidence Rate* of All Musculoskeletal Disorders Involving Days Away from Work, New Jersey and United States, 2000-2016

Year	Number		Rate*	
	NJ	US	NJ	US
2000	14,898	577,814	547	629
2001	13,321	522,528	491	575
2002	13,459	487,915	499	553
2003	13,300	435,180	490	496
2004	10,070	402,700	371	452
2005	9,630	375,540	350	413
2006	10,200	357,160	374	386
2007	8,980	335,390	331	354
2008	8,760	317,440	313	334
2009	8,600	283,800	324	313
2010	7,260	284,340	281	328
2011	9,250	311,840	361	354
2012	10,650	316,740	369	351
2013	8,510	307,640	319	335
2014	9,140	298,460	341	319
2015	7,930	286,350	293	298
2016	8,220	285,950	298	294

*Rate per 100,000 FTEs

Note: Caution should be taken when comparing data to other states or with national estimates due to differences in industry concentration and sample size.

Data Source: US Bureau of Labor Statistics, Survey of Occupational Injuries and Illnesses (SOII) [https://www.bls.gov/iif/msd_state.htm]