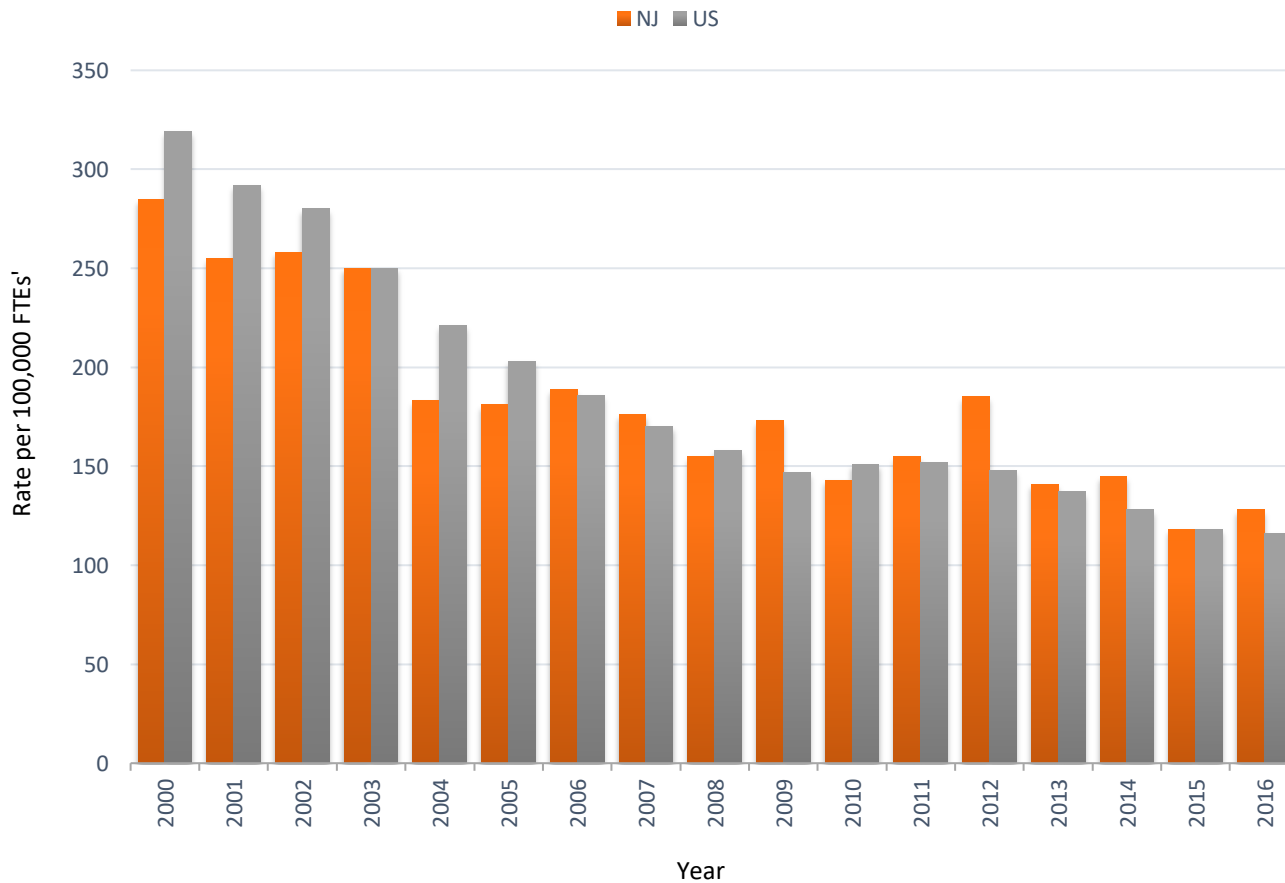


OHI#7: Work-Related Musculoskeletal Disorders (MSDs) with Days Away from Work Reported by Employers

Estimated Annual Incidence Rate* of MSDs of the Back Involving Days Away from Work, New Jersey and United States, 2000-2016



*Rate per 100,000 Full-Time Equivalents (FTEs)

Estimated Annual Number and Incidence Rate* of MSDs of the Back Involving Days Away from Work, New Jersey and United States, 2000-2016

Year	Number		Rate	
	NJ	US	NJ	US
2000	7,777	293,033	285	319
2001	6,926	265,018	255	292
2002	6,970	246,103	258	280
2003	6,800	212,380	250	250
2004	4,970	196,640	183	221
2005	4,970	184,440	181	203
2006	5,150	172,400	189	186
2007	4,780	160,880	176	170
2008	170	150,310	155	158
2009	4,590	133,470	173	147
2010	3,700	130,730	143	151
2011	3,970	133,730	155	152
2012	4,830	133,640	185	148
2013	3,760	126,070	141	137
2014	3,890	119,780	145	128
2015	3,200	113,450	118	118
2016	3,520	113,320	128	116

*Rate per 100,000 FTEs

Data Source: US Bureau of Labor Statistics, Survey of Occupational Injuries and Illnesses (SOII) [https://www.bls.gov/iif/msd_state.htm]