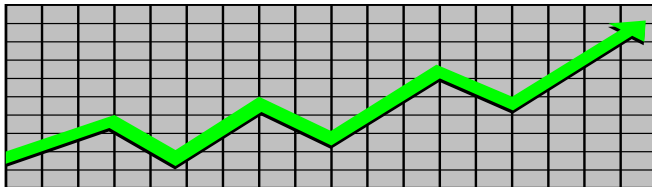


**State of New Jersey**  
**Department of Human Services**  
**Division of Family Development**

---

# **CURRENT PROGRAM STATISTICS**



---

**September 2024**  
**Natasha Johnson, Assistant Commissioner**

## **TABLE OF CONTENTS**

### **HIGHLIGHTS:**

<b>WFNJ/TANF</b> .....	<b>ii</b>
<b>NJ SNAP</b> .....	<b>ii</b>
<b>EMERGENCY ASSISTANCE</b> .....	<b>ii</b>
<b>GENERAL ASSISTANCE</b> .....	<b>iii</b>
GA Emergency Assistance.....	iii
GA Program.....	iii
<b>CHILD SUPPORT SERVICES</b> .....	<b>iii</b>
<b>WORK FIRST NEW JERSEY (WFNJ)</b> .....	<b>iii</b>
<b>STATISTICS- BY STATE &amp; COUNTY</b> .....	<b>1</b>
Table 1: WFNJ/TANF Families & Persons (NJ Statewide) September 2022 to 2024.....	1
Table 2: WFNJ/TANF Families (by County)- September 2024.....	2
Table 2B: WFNJ/TANF Persons, Adults, & Children (by County)- September 2024.....	3
Table 3: TANF Work Participation Rates Over 12 Month Period (by County)- September 2024.....	4
Table 4: TANF Work Participation Rates Over 12 Month Period (NJ Statewide)- September 2024..	5
Table 5: NJ SNAP Households/Persons (NJ Statewide) September 2022 to 2024.....	6
Table 6: NJ SNAP Recipient Trends (NJ Statewide) September 2022 to 2024.....	7
Table 7: NJ SNAP Households/Persons (by County)- September 2024.....	8
Table 8: Emergency Assistance Program (NJ Statewide) September 2022 to 2024.....	9
Table 9: Emergency Assistance Program (by County)- September 2024.....	10
Table 10: General Assistance Program (NJ Statewide) September 2022 to 2024.....	11
Table 11: General Assistance Program (by County)- September 2024.....	12
Table 12: Child Support Services Distributions (NJ Statewide) FFY 2024.....	13
Table 13: Child Support Services Paternities Established- September 2024.....	14
Table 14: Child Support Services Cases With Orders- September 2024.....	15
Table 15: Child Support Services Collections On Current Support- September 2024.....	16
Table 16: Child Support Services Cases With Payments On Arrears- September 2024.....	17
Table 17: WFNJ Statistical Summary- September 2024.....	18
<b>ACRONYMS</b> .....	<b>19</b>
<b>EXPLANATORY NOTES</b> .....	<b>20</b>
WFNJ Statistical Summary (Table 17).....	20

## **DIVISION OF FAMILY DEVELOPMENT CURRENT PROGRAM STATISTICS SEPTEMBER 2024**

---

Each month the Division of Family Development publishes its program statistics for: WFNJ/TANF, NJ SNAP, Emergency Assistance, General Assistance, and Child Support Services. When possible, information is provided separately for children and adults. Many tables also provide trend data with information broken down by county for readers to consider. This report is compiled and prepared by The Bureau of Research & Reporting.

---

### **WFNJ/TANF**

- As of the end of September, the TANF caseload had increased by 260 cases, from 11,254 in September 2023 to 11,514 in September 2024; an increase of 2.3%.
- The counties with caseloads that increased the most since September 2023 were Cumberland (15.2%), Morris (13.6%), and Union (12.6%).
- The counties with caseloads that decreased the most since September 2023 were Sussex (-17.6%), Bergen (-14.2%), and Essex (-10.3%).
- Of the WFNJ/TANF cases, 2,345 or 20.4% were child-only in September 2024.
- The counties with the most child-only cases were Camden (389), Hudson (345), and Essex (233).
- Hudson (5,504), Essex (4,272), and Camden (4,065) counties had the greatest number of persons receiving TANF in September 2024.

### **NJ SNAP (Formerly FOOD STAMPS)**

- In September 2024, there were 444,172 households receiving NJ SNAP benefits. The number of NJ SNAP households increased by 34,826 or 8.5%, since September 2023.
- There were 830,971 persons receiving NJ SNAP benefits as of September 2024; an increase of 46,213 or 5.9% since September 2023.
- The counties having the highest SNAP caseload increase since September 2023 were Union (18.7%), Essex (15.3%), and Mercer (13.9%).
- The county caseloads did not increase since September 2023.

### **EMERGENCY ASSISTANCE**

- There were 1,746 TANF families receiving Emergency Assistance (EA) in September 2024; an increase of 269 or 18.2% since September 2023.
- In September 2024, EA payments were made for 543 SSI recipients.

## **DIVISION OF FAMILY DEVELOPMENT CURRENT PROGRAM STATISTICS SEPTEMBER 2024**

- There were 2,290 GA cases with Emergency Assistance payments in September 2024; an increase of 675 or 41.8% since September 2023.
- The counties that showed the highest percent increase in Emergency Assistance payments were Gloucester (1150%), Passaic (255.6%), and Ocean (163.6%).
- The counties that showed the highest percent decrease in Emergency Assistance payments were Hunterdon (-30%), Camden (-18.7%), and Atlantic (-10.4%).

### **GENERAL ASSISTANCE**

- The total numbers of cases receiving GA has increased from 12,032 to 15,718 since September 2023; an increase of 30.6%.
- There were 11,699 Employable GA and 4,019 Unemployable GA cases in September 2024.
- The counties that showed a percent increase for GA cases were Passaic (69.2%), Hudson (64.8%), and Gloucester (56.3%) since September 2023.
- The counties that showed the highest percent decrease for GA cases since September 2023 was Hunterdon (-23%).
- In September 2024, GA cases showed a 0.03% increase since August 2024.

### **CHILD SUPPORT SERVICES (QUARTERLY REPORT)**

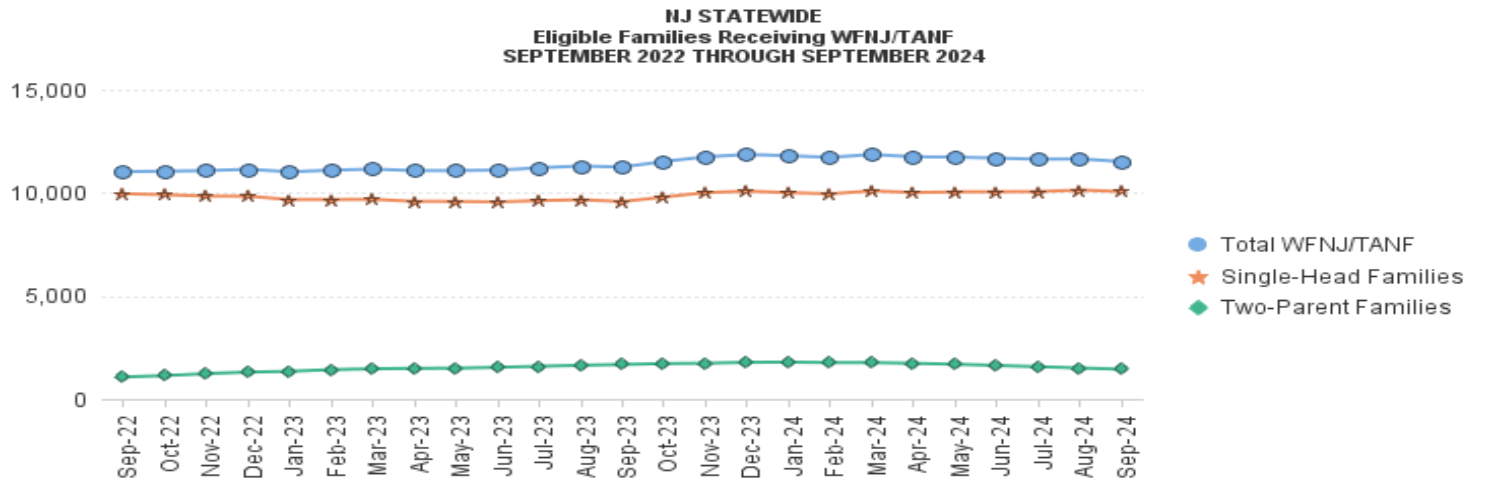
- The total collection for the Child Support Services Program was about \$253 million from July 2024 to September 2024; a decrease of -2.66% over the same period from FFY 2023.
- Total distributions decreased -1.6% from September 2023.

### **WORK FIRST NEW JERSEY (WFNJ)**

- During the report month of September 2024, there were 587 families in which at least one member was employed and an additional 173 families whose WFNJ assistance cases were closed due to employment - related earnings.
- The three counties with the greatest number of employed active WFNJ recipients were: Essex (112), Hudson (107), and Camden (66).
- There were 262 former TANF cases receiving post-TANF support in the form of child care assistance.

TABLE 1: WFNJ/TANF PROGRAM

STATEWIDE NUMBER OF APPLICATIONS AND TERMINATIONS DURING SEPTEMBER 2024												
NUMBER OF ELIGIBLE FAMILIES & PERSONS RECEIVING WFNJ/TANF FOR SEPTEMBER 2024												
SEPTEMBER 2022 THROUGH SEPTEMBER 2024												
		Cases Added	Cases Closed	Child-Only Cases ‡	Total Single-Head Families	2-Parent Families	Total WFNJ/TANF Families	%CHNG (1 Yr.)	Total Persons	%CHNG (1 Yr.)	Adults	Children
2022	SEP	755	808	2,651	9,959	1,070	11,029	22.6%	29,486	28.1%	9,448	20,038
	OCT	753	821	2,626	9,910	1,139	11,049	18.6%	29,606	23.9%	9,562	20,044
	NOV	801	822	2,573	9,843	1,234	11,077	18.4%	29,858	23.0%	9,738	20,120
	DEC	747	792	2,578	9,837	1,308	11,145	15.4%	30,064	19.4%	9,875	20,189
2022	Average	699	623	2,701	9,755	939	10,693		28,466		8,931	19,535
2023	JAN	669	792	2,560	9,674	1,346	11,020	12.0%	29,683	15.1%	9,806	19,877
	FEB	760	717	2,531	9,676	1,426	11,102	9.8%	30,019	12.7%	9,997	20,022
	MAR	822	864	2,565	9,683	1,470	11,153	7.5%	30,069	9.6%	10,058	20,011
	APR	739	858	2,548	9,587	1,490	11,077	5.9%	29,826	7.5%	10,019	19,807
	MAY	825	813	2,523	9,586	1,498	11,084	4.4%	29,863	6.0%	10,059	19,804
	JUN	827	855	2,500	9,562	1,540	11,102	4.0%	29,926	5.8%	10,142	19,784
	JUL	823	764	2,487	9,624	1,590	11,214	2.7%	30,222	4.1%	10,317	19,905
	AUG	887	841	2,445	9,666	1,638	11,304	2.5%	30,533	3.7%	10,497	20,036
	SEP	912	1,097	2,410	9,577	1,677	11,254	2.0%	30,443	3.2%	10,521	19,922
	OCT	944	891	2,463	9,800	1,722	11,522	4.3%	31,139	5.2%	10,781	20,358
	NOV	859	795	2,495	10,011	1,737	11,748	6.1%	31,776	6.4%	10,990	20,786
	DEC	900	836	2,484	10,080	1,781	11,861	6.4%	32,067	6.7%	11,158	20,909
2023	Average	831	844	2,501	9,711	1,576	11,287		30,464		10,362	20,102
2024	JAN	819	879	2,456	10,010	1,790	11,800	7.1%	31,992	7.8%	11,134	20,858
	FEB	743	865	2,451	9,953	1,768	11,721	5.6%	31,775	5.8%	11,038	20,737
	MAR	784	797	2,453	10,095	1,767	11,862	6.4%	32,088	6.7%	11,176	20,912
	APR	832	944	2,414	10,014	1,733	11,747	6.0%	31,674	6.2%	11,066	20,608
	MAY	805	869	2,435	10,047	1,689	11,736	5.9%	31,556	5.7%	10,990	20,566
	JUN	816	920	2,444	10,054	1,631	11,685	5.3%	31,338	4.7%	10,872	20,466
	JUL	802	853	2,383	10,064	1,569	11,633	3.7%	31,312	3.6%	10,819	20,493
	AUG	864	932	2,370	10,138	1,508	11,646	3.0%	31,376	2.8%	10,784	20,592
	SEP	759	890	2,345	10,066	1,448	11,514	2.3%	30,858	1.4%	10,617	20,241
2024	Average To Date	803	883	2,417	10,049	1,656	11,705		31,552		10,944	20,608



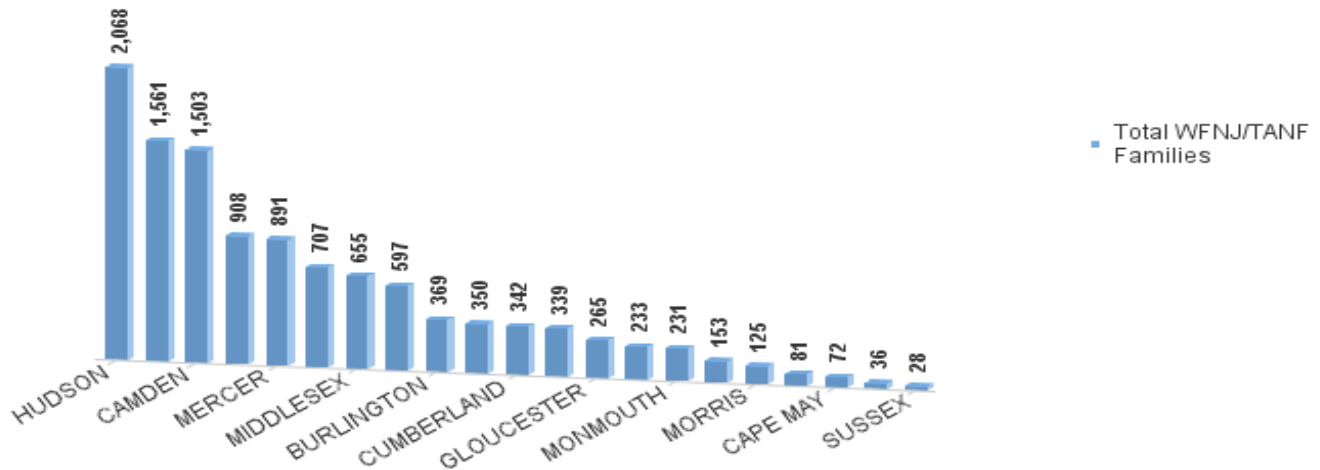
Data is derived from NJ MMIS Shared Data Warehouse Issuance files.  
Effective July 2013 this data query source was converted to the SDW

‡ Child-only cases are defined as families in which no eligible adult receives TANF program benefits, yet the family continues to be headed by atleast one of the biological parents, or grandparents, or other appropriate adult.

TABLE 2:

WFNJ/TANF  
PROGRAMNUMBER OF APPLICATIONS AND TERMINATIONS BY COUNTY DURING SEPTEMBER 2024  
NUMBER OF ELIGIBLE FAMILIES RECEIVING WFNJ/TANF FOR SEPTEMBER 2024

County	Cases Added	Cases Closed **	Child-	1-Adult Cases	Total	2-Parent Families	Total	%CHNG (3 Mon)	%CHNG (1 Yr.)
			Only Cases ‡		Single-Head Families		WFNJ/TANF Families		
ATLANTIC	33	39	177	369	546	51	597	-2.9%	-0.7%
BERGEN	34	32	58	241	299	40	339	0.9%	-14.2% *
BURLINGTON	33	34	94	244	338	31	369	-4.4%	0.8%
CAMDEN	74	111	389	979	1,368	135	1,503	-0.8%	2.7%
CAPE MAY	7	8	24	45	69	3	72	0.0%	5.9%
CUMBERLAND	20	46	99	209	308	34	342	-4.2%	15.2% Δ
ESSEX	109	158	233	946	1,179	382	1,561	-6.2%	-10.3% *
GLOUCESTER	25	18	59	188	247	18	265	9.5%	6.4%
HUDSON	137	136	345	1,482	1,827	241	2,068	1.2%	5.3%
HUNTERDON	3	3	4	25	29	7	36	2.9%	9.1%
MERCER	53	74	168	611	779	112	891	-1.5%	7.5%
MIDDLESEX	40	41	172	423	595	60	655	0.8%	12.5%
MONMOUTH	17	27	48	171	219	12	231	-4.1%	0.0%
MORRIS	13	11	24	80	104	21	125	11.6%	13.6% Δ
OCEAN	15	13	59	260	319	31	350	2.0%	6.7%
PASSAIC	65	37	185	648	833	75	908	3.5%	5.3%
SALEM	14	19	30	111	141	12	153	-7.8%	-4.4%
SOMERSET	15	16	48	170	218	15	233	2.6%	-2.1%
SUSSEX	3	4	7	16	23	5	28	7.7%	-17.6% *
UNION	43	59	106	443	549	158	707	-4.7%	12.6% Δ
WARREN	6	4	16	60	76	5	81	3.8%	5.2%
NJ Total	759	890	2,345	7,721	10,066	1,448	11,514	-1.0%	2.3%

Total WFNJ/TANF Families  
SEPTEMBER 2024  
By County

Data is derived from NJ MMIS Shared Data Warehouse Issuance files.  
Effective July 2013 this data query source was converted to the SDW

‡ Child-only cases are defined as families in which no eligible adult receives TANF program benefits, yet the family continues to be headed by at least one of the prior biological parents, or grandparents, or other appropriate adult

\*\* 'Cases closed' include cases that received a benefit in the prior month, but did not receive any TANF benefit for the report month.

Δ=higher caseload % change

\*=lower caseload % change

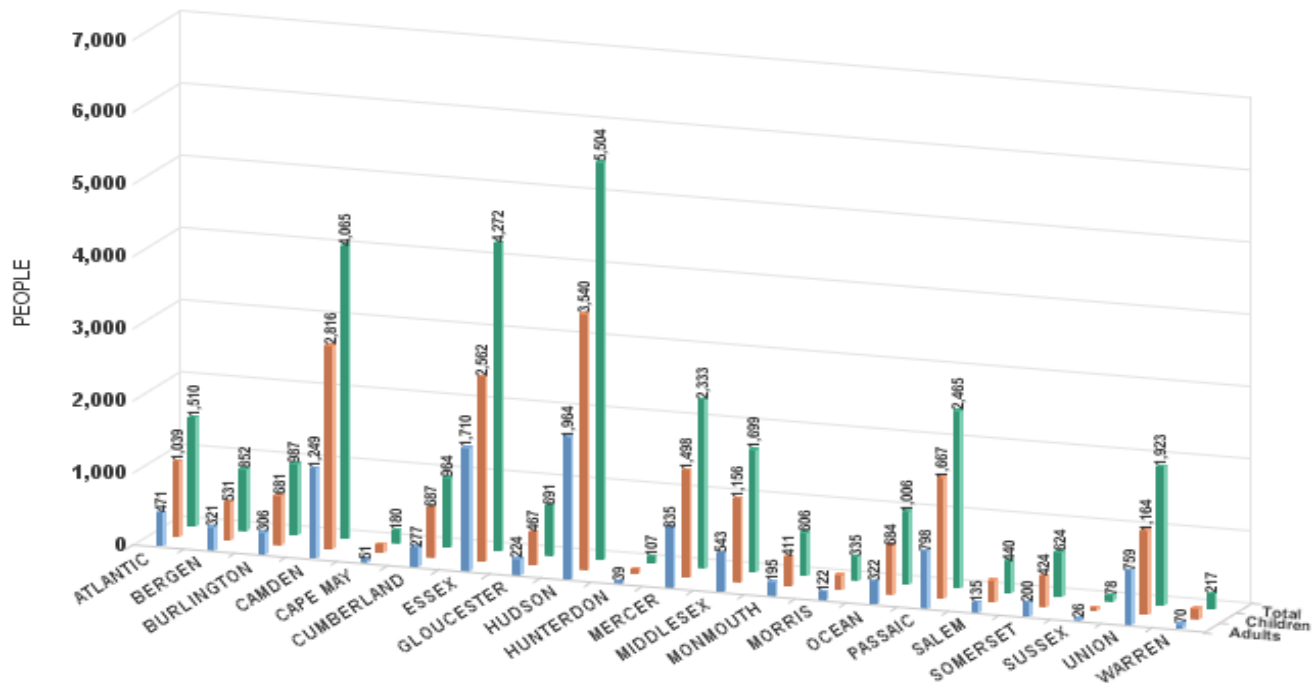
TABLE 2B :

WFNJ/TANF  
PROGRAMNUMBER OF PARTICIPATING PERSONS, ADULTS, AND CHILDREN  
BY COUNTY FOR SEPTEMBER 2024PERSONS

County	Adults	Children	Child/Adult Ratio	Total Persons	% Chng (1 Yr)	Persons Per Case
ATLANTIC	471	1,039	2.21	1,510	-2.0%	2.53
BERGEN	321	531	1.65	852	-16.7% *	2.51
BURLINGTON	306	681	2.23	987	1.8%	2.67
CAMDEN	1,249	2,816	2.25	4,065	3.0%	2.70
CAPE MAY	51	129	2.53	180	0.6%	2.50
CUMBERLAND	277	687	2.48	964	12.2% Δ	2.82
ESSEX	1,710	2,562	1.50	4,272	-12.0% *	2.74
GLOUCESTER	224	467	2.08	691	1.8%	2.61
HUDSON	1,964	3,540	1.80	5,504	3.8%	2.66
HUNTERDON	39	68	1.74	107	27.4% Δ	2.97
MERCER	835	1,498	1.79	2,333	5.0%	2.62
MIDDLESEX	543	1,156	2.13	1,699	12.7% Δ	2.59
MONMOUTH	195	411	2.11	606	-1.1%	2.62
MORRIS	122	213	1.75	335	12.0%	2.68
OCEAN	322	684	2.12	1,006	9.6%	2.87
PASSAIC	798	1,667	2.09	2,465	6.2%	2.71
SALEM	135	305	2.26	440	0.5%	2.88
SOMERSET	200	424	2.12	624	-1.6%	2.68
SUSSEX	26	52	2.00	78	-6.0% *	2.79
UNION	759	1,164	1.53	1,923	9.6%	2.72
WARREN	70	147	2.10	217	0.0%	2.68
NJ Total	10,617	20,241	1.91	30,858	1.4%	2.68

Δ=higher caseload % change

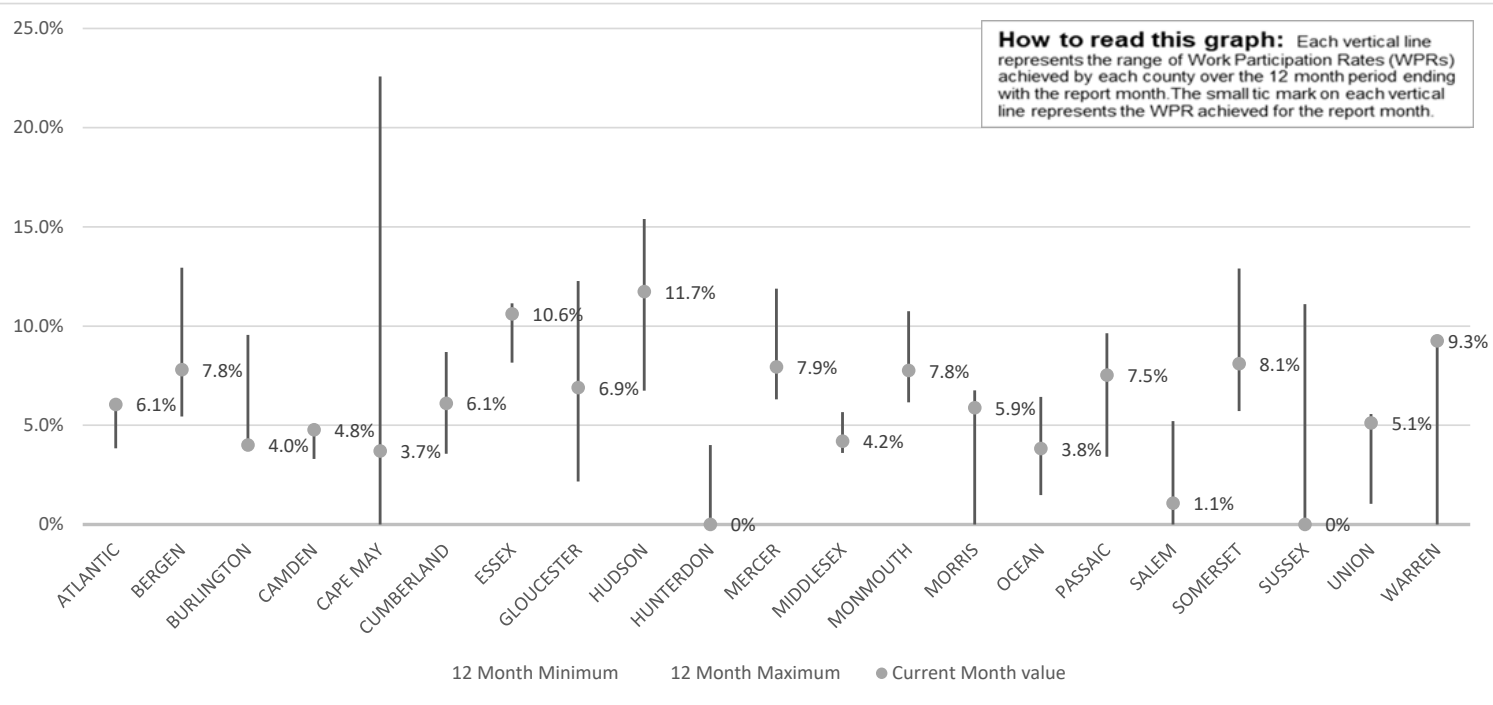
\*=lower caseload % change



Data is derived from NJ MMIS Shared Data Warehouse Issuance files.  
Effective July 2013 this data query source was converted to the SDW

TABLE 3 :

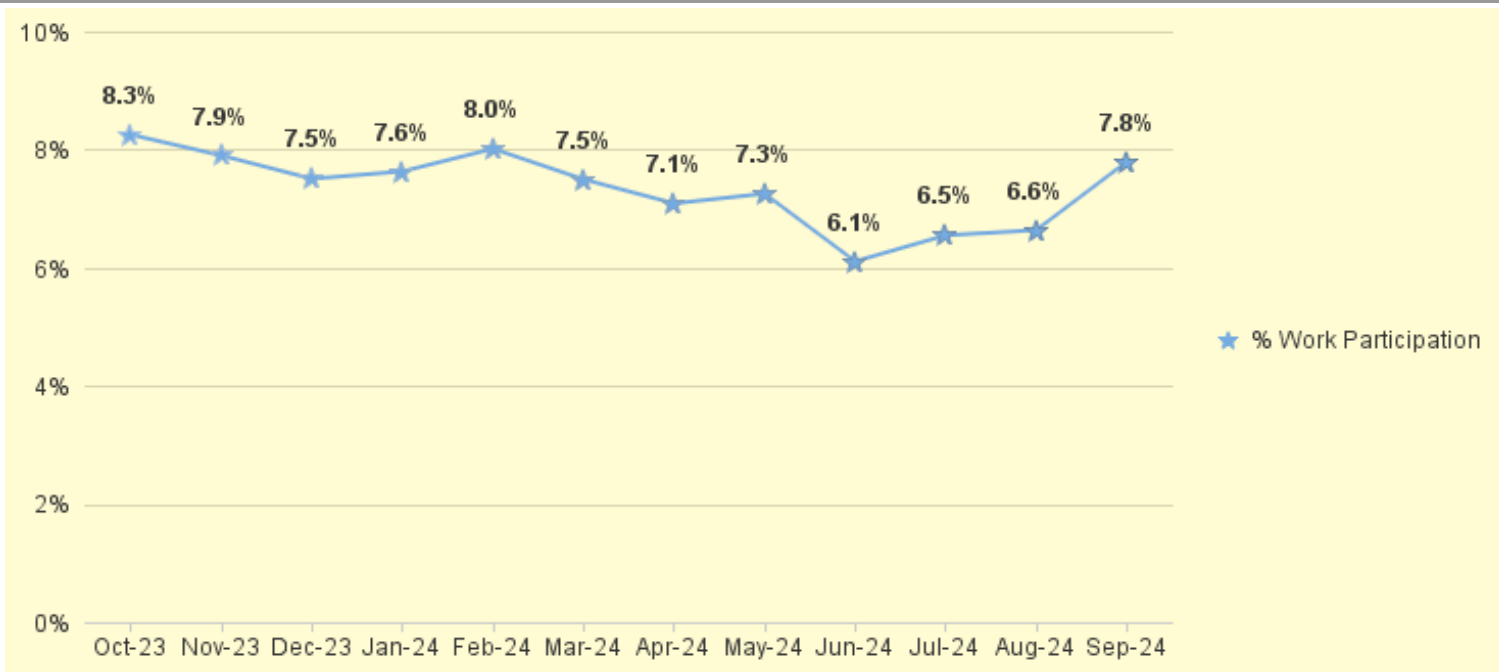
Work Participation Rates Achieved Over 12 Month Period  
Ending with SEPTEMBER 2024



Data is derived from NJ MMIS Shared Data Warehouse Issuance files.  
Effective July 2013 this data query source was converted to the SDW

TABLE 4 :

WFNJ/TANF Work Participation Rates  
for 12-Month Period Ending with SEPTEMBER 2024   Statewide



\* The Work Participation rate measures the number of countable Temporary Assistance for Needs Families (TANF) participants based on federal formula. The reported rate is considered to be preliminary until officially calculated by the federal government soon after the close of each federal fiscal year.

**TABLE 5 :**  
**NJ SNAP**  
**(FOOD STAMPS)**

**NUMBER OF PARTICIPATING HOUSEHOLDS, PERSONS, ADULTS  
AND CHILDREN FOR SEPTEMBER 2024 (STATEWIDE)**

**SEPTEMBER 2022 THROUGH SEPTEMBER 2024**

		HOUSEHOLDS				PERSONS				Age 60+	People with a disability
		WFNJ/ TANF	Other low income	Total	% CHNG (1 YR)	Adults	Children	TOTAL	% CHNG (1 YR)		
<b>2022</b>	SEP	11,543	391,350	<b>402,893</b>	-11.9%	440,973	348,303	<b>789,276</b>	-11.1%	150,801	220,166
	OCT	11,175	384,016	<b>395,191</b>	-14.5%	433,352	329,837	<b>763,189</b>	-14.4%	152,434	220,723
	NOV	10,978	386,385	<b>397,363</b>	-14.6%	436,125	332,459	<b>768,584</b>	-14.4%	153,574	221,980
	DEC	11,094	393,042	<b>404,136</b>	-13.7%	443,837	340,993	<b>784,830</b>	-13.1%	155,061	227,586
<b>2022</b>	<b>Average</b>	<b>11,011</b>	<b>418,196</b>	<b>429,207</b>		<b>469,290</b>	<b>362,512</b>	<b>831,802</b>		<b>154,511</b>	<b>227,191</b>
<b>2023</b>	JAN	11,120	388,312	<b>399,432</b>	-14.7%	438,140	336,442	<b>774,582</b>	-14.2%	153,633	223,462
	FEB	10,806	388,213	<b>399,019</b>	-13.7%	437,832	336,772	<b>774,604</b>	-12.9%	154,374	223,539
	MAR	12,027	407,914	<b>419,941</b>	-10.0%	460,274	373,470	<b>833,744</b>	-7.1%	156,031	227,136
	APR	11,987	408,628	<b>420,615</b>	-6.6%	460,514	370,535	<b>831,049</b>	-4.1%	156,584	227,434
	MAY	11,026	397,178	<b>408,204</b>	-6.0%	446,453	341,774	<b>788,227</b>	-5.6%	157,317	225,010
	JUN	11,193	399,666	<b>410,859</b>	-2.9%	449,079	343,009	<b>792,088</b>	-2.7%	157,999	225,250
	JUL	11,874	408,109	<b>419,983</b>	2.0%	458,990	363,129	<b>822,119</b>	3.4%	158,680	226,431
	AUG	11,445	398,827	<b>410,272</b>	-5.5%	448,110	340,718	<b>788,828</b>	-10.0%	158,893	224,313
	SEP	11,607	397,739	<b>409,346</b>	1.6%	446,467	338,291	<b>784,758</b>	-0.6%	160,208	225,665
	OCT	11,862	399,663	<b>411,525</b>	4.1%	448,591	338,651	<b>787,242</b>	3.2%	161,651	226,946
	NOV	11,994	404,810	<b>416,804</b>	4.9%	453,939	342,920	<b>796,859</b>	3.7%	162,683	227,481
	DEC	12,360	413,594	<b>425,954</b>	5.4%	464,039	351,241	<b>815,280</b>	3.9%	164,787	233,859
<b>2023</b>	<b>Average</b>	<b>11,608</b>	<b>401,054</b>	<b>412,663</b>		<b>451,036</b>	<b>348,079</b>	<b>799,115</b>		<b>158,570</b>	<b>226,377</b>
<b>2024</b>	JAN	12,147	413,384	<b>425,531</b>	6.5%	462,636	348,128	<b>810,764</b>	4.7%	164,794	231,669
	FEB	11,859	416,486	<b>428,345</b>	7.3%	465,489	348,007	<b>813,496</b>	5.0%	165,676	231,340
	MAR	12,058	426,988	<b>439,046</b>	4.5%	476,761	357,715	<b>834,476</b>	0.1%	167,855	233,743
	APR	11,717	426,510	<b>438,227</b>	4.2%	474,957	354,424	<b>829,381</b>	-0.2%	168,166	233,544
	MAY	11,715	431,264	<b>442,979</b>	8.5%	479,707	356,729	<b>836,436</b>	6.1%	169,629	234,656
	JUN	11,848	435,764	<b>447,612</b>	8.9%	484,805	359,806	<b>844,611</b>	6.6%	171,199	235,765
	JUL	11,626	432,725	<b>444,351</b>	5.8%	481,340	354,315	<b>835,655</b>	1.6%	171,322	234,963
	AUG	12,047	438,849	<b>450,896</b>	9.9%	488,286	358,835	<b>847,121</b>	7.4%	172,882	236,688
	SEP	11,733	432,439	<b>444,172</b>	8.5%	480,588	350,383	<b>830,971</b>	5.9%	172,370	235,245
<b>2024</b>	<b>Average To Date</b>	<b>11,861</b>	<b>428,268</b>	<b>440,129</b>		<b>477,174</b>	<b>354,260</b>	<b>831,435</b>		<b>169,321</b>	<b>234,179</b>

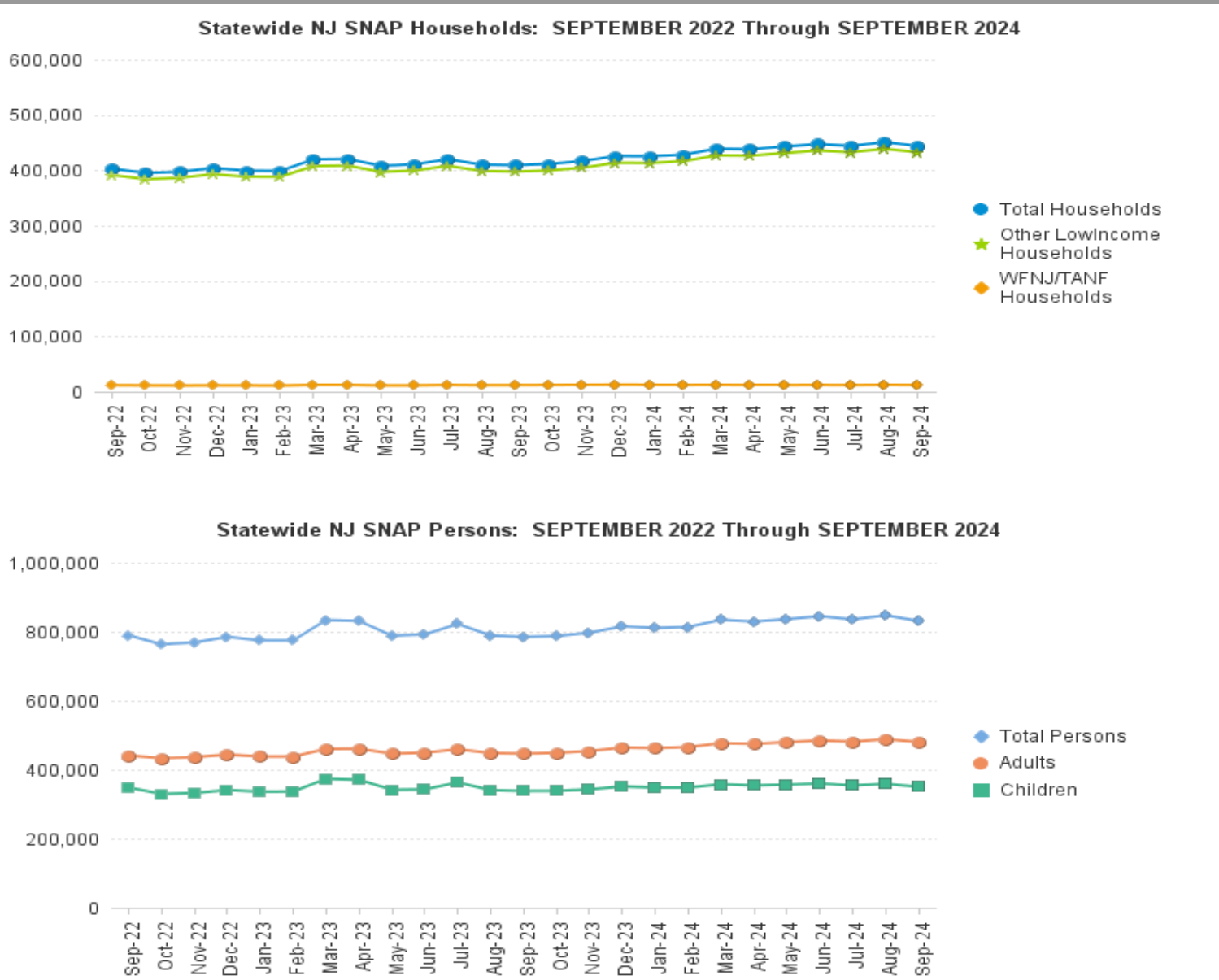
This Table is based on those Households & Persons that recived SNAP issuances (benefits) during the month

Data is derived from NJ MMIS Shared Data Warehouse.

Effective July 2013 this data query source was converted to the SDW.

\* Age 60+ and People with a disability columns are independent subsets of total persons. An individual might appear in both columns

TABLE 6: NJ SNAP (FOOD STAMPS)  
TRENDS FOR PARTICIPATING HOUSEHOLDS & PERSONS  
SEPTEMBER 2022 THROUGH SEPTEMBER 2024 (STATEWIDE)



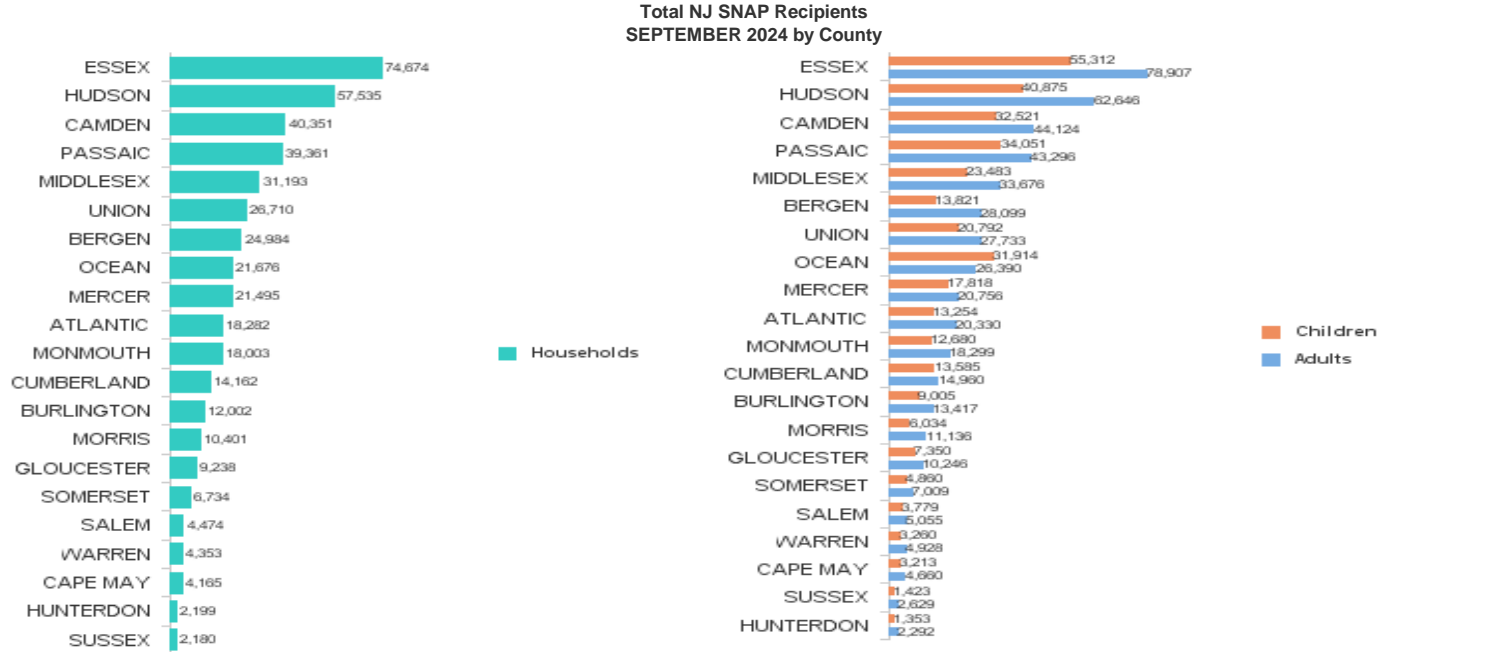
Data is derived from NJ MMIS Shared Data Warehouse Issuance files.  
Effective July 2013 this data query source was converted to the SDW

TABLE 7 :  
NJ SNAP

NUMBER OF PARTICIPATING HOUSEHOLDS, PERSONS, ADULTS  
AND CHILDREN BY COUNTY FOR SEPTEMBER 2024

County	HOUSEHOLDS				PERSONS				Age 60+	People with a disability
	WFNJ/ TANF	Other low income	TOTAL	% Chng (1 Yr)	Adults	Children	TOTAL	% Chng (1 Yr)		
ATLANTIC	561	17,721	18,282	0.0% *	20,330	13,254	33,584	-2.9% *	6,947	10,143
BERGEN	338	24,646	24,984	6.1%	28,099	13,821	41,920	5.9%	15,652	17,495
BURLINGTON	534	11,468	12,002	8.1%	13,417	9,005	22,422	7.0%	4,153	6,971
CAMDEN	1,452	38,899	40,351	8.6%	44,124	32,521	76,645	6.0%	12,188	20,178
CAPE MAY	86	4,079	4,165	3.5% *	4,660	3,213	7,873	2.9%	1,449	2,334
CUMBERLAND	327	13,835	14,162	11.2%	14,960	13,585	28,545	9.9%	4,055	7,510
ESSEX	1,824	72,850	74,674	15.3% Δ	78,907	55,312	134,219	11.3% Δ	22,924	32,640
GLOUCESTER	260	8,978	9,238	9.0%	10,246	7,350	17,596	8.7%	3,352	6,328
HUDSON	2,031	55,504	57,535	4.3%	62,646	40,875	103,521	1.1% *	24,678	29,770
HUNTERDON	34	2,165	2,199	6.5%	2,292	1,353	3,645	6.8%	901	1,279
MERCER	895	20,600	21,495	13.9% Δ	20,756	17,818	38,574	11.3% Δ	6,204	10,768
MIDDLESEX	681	30,512	31,193	6.8%	33,676	23,483	57,159	5.3%	15,459	19,074
MONMOUTH	247	17,756	18,003	4.3%	18,299	12,680	30,979	2.3%	7,611	10,261
MORRIS	157	10,244	10,401	11.6%	11,136	6,034	17,170	10.4%	5,618	6,144
OCEAN	336	21,340	21,676	4.5%	26,390	31,914	58,304	0.1% *	7,887	11,493
PASSAIC	867	38,494	39,361	4.2%	43,296	34,051	77,347	1.5%	16,716	19,951
SALEM	151	4,323	4,474	8.8%	5,055	3,779	8,834	5.8%	1,326	2,383
SOMERSET	218	6,516	6,734	10.8%	7,009	4,860	11,869	9.3%	2,982	4,000
SUSSEX	36	2,144	2,180	4.1% *	2,629	1,423	4,052	2.4%	1,003	1,588
UNION	605	26,105	26,710	18.7% Δ	27,733	20,792	48,525	18.1% Δ	9,670	12,248
WARREN	93	4,260	4,353	7.0%	4,928	3,260	8,188	7.3%	1,595	2,687
NJ TOTAL	11,733	432,439	444,172	8.5%	480,588	350,383	830,971	5.9%	172,370	235,245

Δ=higher caseload % change      \*=lower caseload % change



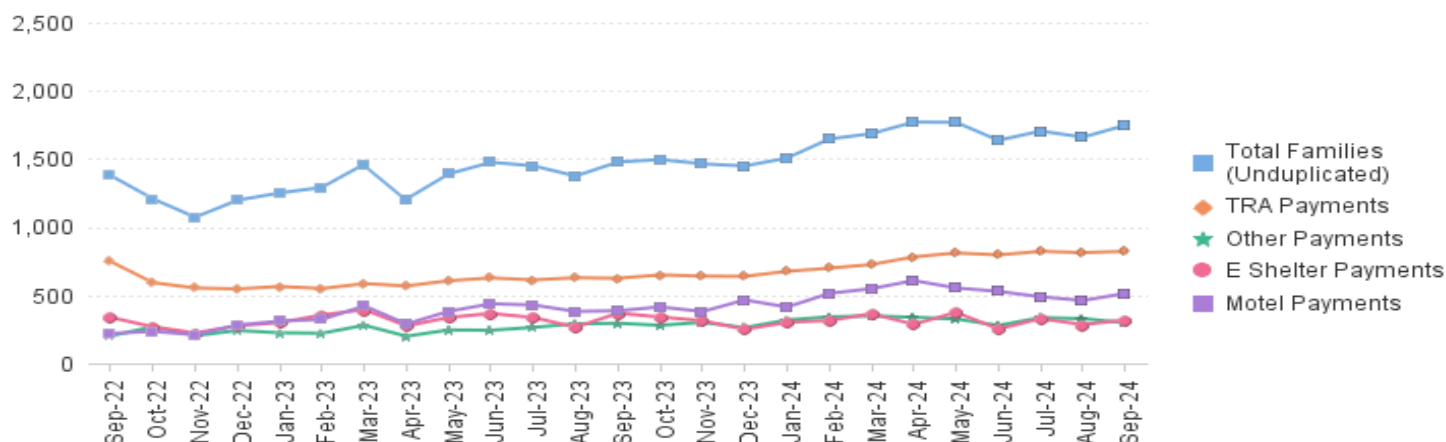
Data is derived from NJ MMIS Shared Data Warehouse.  
Effective July 2013 this data query source was converted to the SDW.  
\* Age 60+ and People with a disability columns are independent subsets of total persons. An individual might appear in both columns

TABLE 8 :

**EMERGENCY ASSISTANCE (STATEWIDE)**      **TOTAL NUMBER OF ELIGIBLE FAMILIES RECEIVING EMERGENCY ASSISTANCE PAYMENTS**  
**SEPTEMBER 2022 THROUGH SEPTEMBER 2024 - STATEWIDE**

		Total WFNJ/EA Families (Undupl)	% CHNG (1 YR)	Temp Rent Asst. Payments (Undupl)	% CHNG (1 YR)	Motel Housing Payments (Undupl)	% CHNG (1 YR)	Shelter/Transitional Housing Payments (Undupl)	% CHNG (1 YR)	Other WFNJ/EA Payments (Undupl)	% CHNG (1 YR)
2022	SEP	1,378	3.7%	747	-14.7%	219	58.7%	337	17.8%	201	19.6%
	OCT	1,207	-8.1%	592	-29.8%	234	105.3%	268	-0.4%	269	35.2%
	NOV	1,072	-13.8%	553	-34.6%	210	92.7%	223	-1.3%	203	5.2%
	DEC	1,197	-6.3%	546	-33.9%	280	120.5%	276	10.4%	241	50.6%
2022 Average		1,296		723		204		289		230	
2023	JAN	1,250	4.5%	564	-20.1%	310	148.0%	299	4.9%	224	19.8%
	FEB	1,291	6.0%	549	-23.8%	322	113.2%	355	29.6%	221	5.2%
	MAR	1,462	4.7%	585	-24.3%	421	112.6%	394	18.7%	279	3.0%
	APR	1,206	-5.9%	568	-27.8%	289	72.0%	274	3.4%	199	-11.9%
	MAY	1,390	1.0%	606	-23.5%	382	109.9%	337	2.7%	245	2.5%
	JUN	1,475	6.3%	627	-21.7%	437	95.1%	366	32.1%	243	12.5%
	JUL	1,449	8.7%	612	-24.6%	428	101.9%	336	38.8%	264	3.5%
	AUG	1,374	-8.9%	628	-26.0%	381	56.8%	265	-26.0%	290	19.3%
	SEP	1,477	7.2%	624	-16.5%	386	76.3%	368	9.2%	294	46.3%
	OCT	1,495	23.9%	649	9.6%	414	76.9%	340	26.9%	279	3.7%
	NOV	1,464	36.6%	640	15.7%	380	81.0%	313	40.4%	301	48.3%
	DEC	1,448	21.0%	638	16.8%	465	66.1%	249	-9.8%	262	8.7%
2023 Average		1,398		608		385		325		258	
2024	JAN	1,506	20.5%	675	19.7%	413	33.2%	301	0.7%	318	42.0%
	FEB	1,646	27.5%	698	27.1%	513	59.3%	314	-11.5%	341	54.3%
	MAR	1,685	15.3%	725	23.9%	548	30.2%	364	-7.6%	348	24.7%
	APR	1,770	46.8%	781	37.5%	607	110.0%	286	4.4%	338	69.8%
	MAY	1,768	27.2%	810	33.7%	553	44.8%	374	11.0%	325	32.7%
	JUN	1,636	10.9%	795	26.8%	528	20.8%	252	-31.1%	278	14.4%
	JUL	1,704	17.6%	822	34.3%	488	14.0%	328	-2.4%	335	26.9%
	AUG	1,659	20.7%	812	29.3%	461	21.0%	284	7.2%	328	13.1%
2024 Average		1,680		771		514		313		323	

**NJ STATEWIDE**  
**Families Receiving Emergency Assistance**  
**SEPTEMBER 2022 THROUGH SEPTEMBER 2024**



WFNJ/EA data is derived from NJ MMIS Shared Data Warehouse.  
Effective July 2013 this data query source was converted to the SDW.

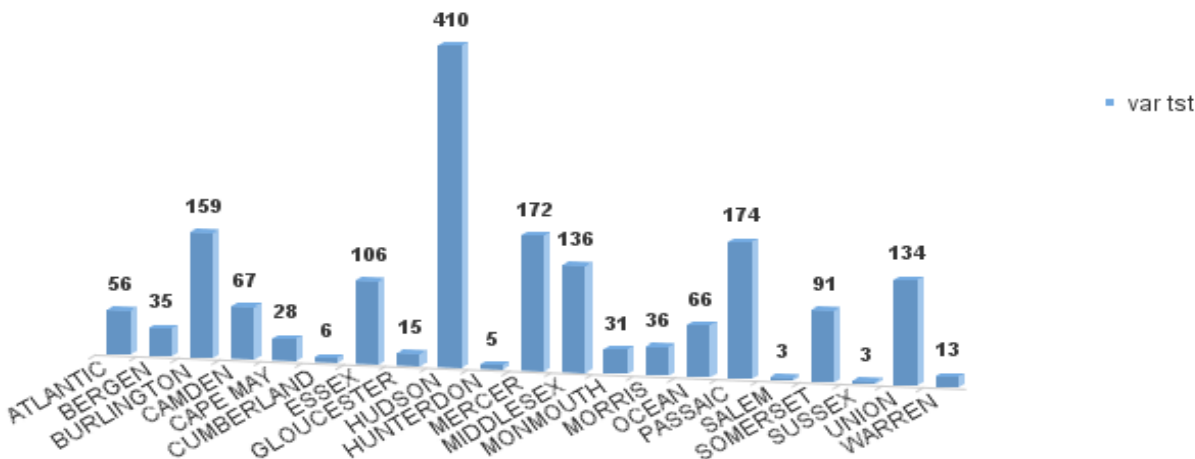
\* Effective Feb '11 Transitional Housing Payments were removed from 'Other EA Payments' and added to 'Shelter Payments'.

TABLE 9 :  
EMERGENCY ASSISTANCE (BY COUNTY)      TOTAL NUMBER OF ELIGIBLE FAMILIES RECEIVING EMERGENCY ASSISTANCE PAYMENTS BY COUNTY (UNDUPLICATED CASES) FOR SEPTEMBER 2024

County	TOTAL WFNJ/EA Families (Undupl)	% CHNG From SEP 23	Temp Rent Asst. Payments (Undupl)	Motel Housing Payments (Undupl)	Shelter/Transitional Housing Payments (Undupl)	Other WFNJ/EA Payments (Undupl)	SSI Receipients Receiving EA **
ATLANTIC	56	30.2%	39	13	0	8	44
BERGEN	35	-7.9%	19	2	12	8	16
BURLINGTON	159	16.1%	12	88	63	7	3
CAMDEN	67	-14.1%	10	31	25	8	17
CAPE MAY	28	55.6%	4	25	0	2	7
CUMBERLAND	6	-45.5% *	0	0	5	1	3
ESSEX	106	-1.9%	50	0	52	9	13
GLOUCESTER	15	-25.0%	3	3	3	9	20
HUDSON	410	26.9%	260	101	32	86	85
HUNTERDON	5	-37.5% *	1	3	0	1	1
MERCER	172	12.4%	91	50	2	47	123
MIDDLESEX	136	94.3% Δ	58	53	17	33	55
MONMOUTH	31	-27.9% *	2	0	29	0	14
MORRIS	36	157.1% Δ	11	19	5	7	25
OCEAN	66	69.2% Δ	33	32	0	6	12
PASSAIC	174	12.3%	134	10	19	14	32
SALEM	3	0%	1	0	0	3	4
SOMERSET	91	8.3%	48	30	8	25	45
SUSSEX	3	-25.0%	0	3	0	0	5
UNION	134	14.5%	41	44	45	19	16
WARREN	13	18.2%	5	6	1	5	3
NJ Total	1,746	18.2%	822	513	318	298	543

Δ=higher caseload % change      \*=lower caseload % change  
\*\* SSI-EA includes pay codes 22 and 24, data is derived from NJ Division of Family Development FAMIS Report #FM430-03A  
WFNJ/EA data is derived from NJ MMIS Shared Data Warehouse.  
Effective July 2013 this data query source was converted to the SDW.

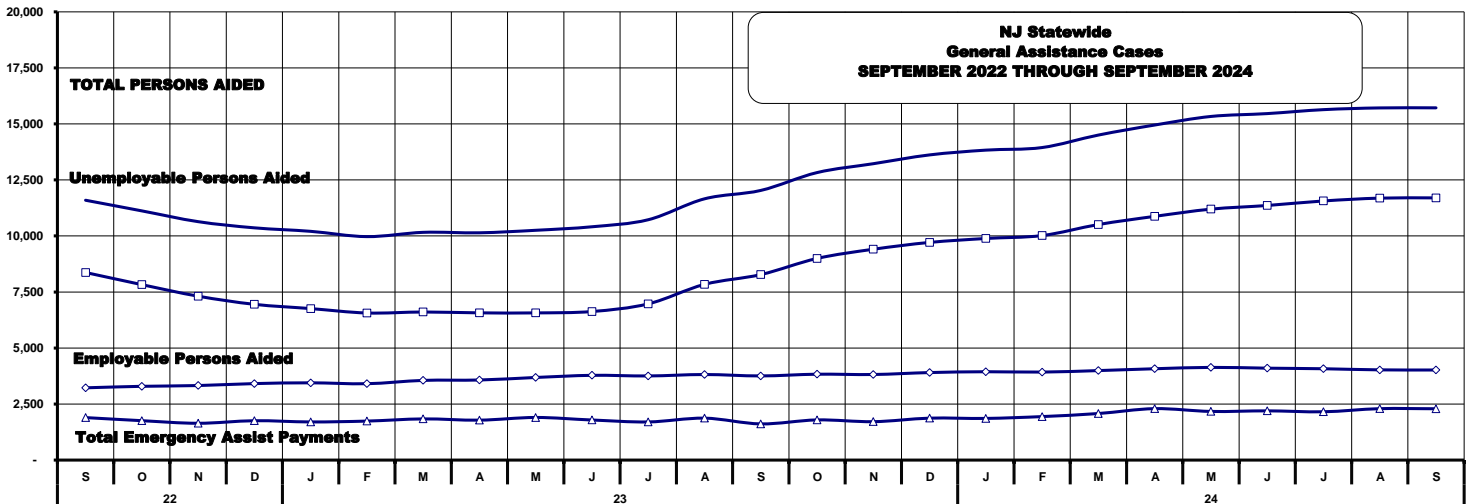
Number WFNJ Families Receiving EA by County  
SEPTEMBER 2024



**TABLE 10:  
GENERAL  
ASSISTANCE  
PROGRAM**

**NUMBER OF EMPLOYABLE AND UNEMPLOYABLE RECIPIENTS  
AND EMERGENCY ASSISTANCE PAYMENTS - STATEWIDE  
SEPTEMBER 2022 THROUGH SEPTEMBER 2024**

	Total Cases						Emergency Assistance Cases			
	Employable	% Chng (1 Yr)	Unemployable	% Chng (1 Yr)	Total	% Chng (1 Yr)	Temporary Rental Assistance	Other GA-EA	Total	% Chng (1 Yr)
<b>2022 SEP</b>	8,370	-7.5%	3,225	-17.6%	<b>11,595</b>	-10.5%	635	1,261	<b>1,896</b>	-0.3%
OCT	7,829	-15.9%	3,291	-15.1%	<b>11,120</b>	-15.7%	574	1,184	<b>1,758</b>	-3.3%
NOV	7,313	-24.4%	3,326	-13.7%	<b>10,639</b>	-21.3%	602	1,040	<b>1,642</b>	-4.6%
DEC	6,950	-30.8%	3,413	-11.5%	<b>10,363</b>	-25.4%	599	1,157	<b>1,756</b>	-3.1%
<b>2022 AVERAGE</b>	<b>10,103</b>		<b>3,619</b>		<b>13,722</b>		<b>688</b>	<b>1,192</b>	<b>1,880</b>	
<b>2023 JAN</b>	6,760	-34.0%	3,447	-9.3%	<b>10,207</b>	-27.3%	590	1,112	<b>1,702</b>	4.8%
FEB	6,563	-38.6%	3,408	-10.6%	<b>9,971</b>	-31.2%	570	1,170	<b>1,740</b>	-6.1%
MAR	6,607	-42.4%	3,555	-8.1%	<b>10,162</b>	-33.7%	586	1,251	<b>1,837</b>	-10.8%
APR	6,569	-44.4%	3,573	-6.5%	<b>10,142</b>	-35.1%	623	1,158	<b>1,781</b>	-8.1%
MAY	6,567	-45.5%	3,686	-3.1%	<b>10,253</b>	-35.3%	634	1,267	<b>1,901</b>	-0.1%
JUN	6,629	-46.1%	3,782	-2.0%	<b>10,411</b>	-35.6%	633	1,155	<b>1,788</b>	-12.0%
JUL	6,971	-44.0%	3,754	-2.8%	<b>10,725</b>	-34.3%	605	1,097	<b>1,702</b>	-12.9%
AUG	7,840	-19.9%	3,817	14.2%	<b>11,657</b>	-11.2%	602	1,268	<b>1,870</b>	-10.4%
SEP	8,277	-1.1%	3,755	16.4%	<b>12,032</b>	3.8%	610	1,005	<b>1,615</b>	-14.8%
OCT	8,997	14.9%	3,831	16.4%	<b>12,828</b>	15.4%	583	1,209	<b>1,792</b>	1.9%
NOV	9,407	28.6%	3,818	14.8%	<b>13,225</b>	24.3%	600	1,114	<b>1,714</b>	4.4%
DEC	9,712	39.7%	3,905	14.4%	<b>13,617</b>	31.4%	598	1,272	<b>1,870</b>	6.5%
<b>2023 AVERAGE</b>	<b>7,575</b>		<b>3,694</b>		<b>11,269</b>		<b>603</b>	<b>1,173</b>	<b>1,776</b>	
<b>2024 JAN</b>	9,888	46.3%	3,942	14.4%	<b>13,830</b>	35.5%	612	1,247	<b>1,859</b>	9.2%
FEB	10,019	52.7%	3,927	15.2%	<b>13,946</b>	39.9%	513	1,428	<b>1,941</b>	11.6%
MAR	10,510	59.1%	3,993	12.3%	<b>14,503</b>	42.7%	629	1,449	<b>2,078</b>	10.0%
APR	10,875	65.6%	4,075	14.0%	<b>14,950</b>	47.4%	659	1,636	<b>2,295</b>	28.9%
MAY	11,197	70.5%	4,136	12.2%	<b>15,333</b>	49.5%	680	1,490	<b>2,170</b>	14.2%
JUN	11,360	71.4%	4,101	8.4%	<b>15,461</b>	48.5%	696	1,501	<b>2,197</b>	22.9%
JUL	11,562	65.9%	4,075	8.6%	<b>15,637</b>	45.8%	662	1,494	<b>2,156</b>	26.7%
AUG	11,689	49.1%	4,025	5.4%	<b>15,714</b>	34.8%	749	1,545	<b>2,294</b>	22.7%
SEP	11,699	41.3%	4,019	7.0%	<b>15,718</b>	30.6%	761	1,529	<b>2,290</b>	41.8%
<b>2023 AVERAGE TO DATE</b>	<b>10,978</b>		<b>4,033</b>		<b>15,010</b>		<b>662</b>	<b>1,480</b>	<b>2,142</b>	



**TABLE 11:**  
**GENERAL**  
**ASSISTANCE**  
**PROGRAM**

**EMPLOYABLE AND UNEMPLOYABLE CASES**  
**AND EMERGENCY ASSISTANCE CASES RECEIVING PAYMENTS BY COUNTY**  
**SEPTEMBER 2024**

	Total Cases						Emergency Assistance Cases			
	Employable	% Chng (1 Yr)	Unemployable	% Chng (1 Yr)	Total	% Chng (1 Yr)	Temporary Rental Assistance	Other GA-EA	Total	% Chng (1 Yr)
ATLANTIC	1,046	24.1%	156	-1.9%	1,202	20.0%	88	58	146	-10.4% *
BERGEN	390	27.9%	240	-3.6%	630	13.7%	67	24	91	19.7%
BURLINGTON	350	26.4%	190	26.7%	540	26.5%	10	88	98	44.1%
CAMDEN	1,712	28.0%	518	12.9%	2,230	24.1%	38	71	109	-18.7% *
CAPE MAY	137	21.2%	61	45.2%	198	27.7%	10	68	78	41.8%
CUMBERLAND	414	41.8%	203	16.7%	617	32.4%	2	18	20	11.1%
ESSEX	1,202	29.2%	256	4.5%	1,458	24.1%	37	162	199	0.0%
GLOUCESTER	281	106.6%	119	-0.8%	400	56.3% Δ	5	45	50	1150.0% Δ
HUDSON	1,836	80.2%	357	14.4%	2,193	64.8% Δ	158	168	326	109.0%
HUNTERDON	49	-39.5%	55	1.9%	104	-23.0% *	6	15	21	-30.0% *
MERCER	645	51.1%	267	8.1%	912	35.3%	46	93	139	110.6%
MIDDLESEX	443	61.1%	339	0.0%	782	27.4%	49	69	118	18.0%
MONMOUTH	363	54.5%	233	7.9%	596	32.2%	3	90	93	16.3%
MORRIS	261	54.4%	155	-3.7%	416	26.1%	43	61	104	67.7%
OCEAN	370	23.3%	198	-12.0%	568	8.2% *	20	96	116	163.6% Δ
PASSAIC	760	86.3%	189	23.5%	949	69.2% Δ	83	45	128	255.6% Δ
SALEM	155	74.2%	53	-7.0%	208	42.5%	4	1	5	66.7%
SOMERSET	353	51.5%	93	10.7%	446	40.7%	44	138	182	55.6%
SUSSEX	33	94.1%	29	-3.3%	62	31.9%	0	9	9	0.0%
UNION	801	12.0%	243	15.2%	1,044	12.7% *	36	179	215	32.7%
WARREN	98	30.7%	65	-4.4%	163	14.0%	12	31	43	30.3%
NJ TOTAL	11,699	41.3%	4,019	7.0%	15,718	30.6%	761	1,529	2,290	41.8%

Δ= ↑ Caseload %

\* = ↓ Caseload %

**TABLE 12:  
OFFICE OF  
CHILD SUPPORT  
SERVICES**

**OFFICE OF CHILD SUPPORT SERVICES  
QUARTERLY PERFORMANCE REPORT  
STATE SUMMARY  
TITLE IV-D SOURCE COLLECTION REPORT**

Comparison of Quarter-4 (FFY 2023 vs. FFY 2024)

COLLECTION SOURCE	TOTAL 7/1/2023 - 9/30/2023	% OF TOTAL COLLECTIONS	TOTAL 7/1/2024 - 9/30/2024	% OF TOTAL COLLECTIONS	DOLLAR CHANGE	% CHANGE
FEDERAL TAX	\$3,138,677	1.21%	\$1,939,333	0.77%	\$ (1,199,344)	-38.21%
STATE TAX	\$3,219,478	1.24%	\$2,455,684	0.97%	\$ (763,794)	-23.72%
UIB	\$5,696,616	2.19%	\$6,573,650	2.60%	\$ 877,034	15.40%
INC WITHHOLD	\$180,225,466	69.39%	\$179,838,027	71.13%	\$ (387,439)	-0.21%
FROM OTHER STATES	\$9,955,295	3.83%	\$9,660,970	3.82%	\$ (294,325)	-2.96%
ADMIN ENFORCEMENT	\$5,067,440	1.95%		0.00%	\$ (5,067,440)	-100.00%
OTHER	\$52,443,192	20.19%	\$52,366,242	20.71%	\$ (76,950)	-0.15%
<b>TOTAL COLLECTIONS*</b>	<b>\$259,746,164</b>	<b>100%</b>	<b>\$252,833,906</b>	<b>100%</b>	<b>\$ (6,912,258)</b>	<b>-2.66%</b>
<b>DISBURSED COLLECTIONS**</b>	<b>\$225,398,220</b>		<b>\$221,823,418</b>		<b>\$ (3,574,802)</b>	<b>-1.59%</b>

\* Includes collections on both current support and arrears.

\*\* Includes collections on both current support and arrears; also includes money sent to other states.

SOURCE: NJKiDS (Based on Federal Quarterly Report of Collections - OCSE-34A except Disbursed Collections)

Disbursed Collections obtained from Federal Data Report - OCSE-157, which is reported annually to Congress and used in the calculation of incentive dollars earned by each state.

**TABLE 13:**  
**OFFICE OF**  
**CHILD SUPPORT**  
**SERVICES**

**OFFICE OF CHILD SUPPORT SERVICES**  
**STATE SUMMARY**  
**TITLE IV-D PATERNITY ESTABLISHMENT REPORT**  
Comparison of September (FFY 2023 vs. FFY 2024)

County	SEPTEMBER 2023			SEPTEMBER 2024			Increase or Decrease (-) from FFY 2023 to FFY 2024
	Total Children Born Out of Wedlock*	Number of Paternities Established	Percent of Paternities Established	Total Children Born Out of Wedlock*	Number of Paternities Established	Percent of Paternities Established	
Atlantic	4,705	4,690	99.7%	4,248	4,242	99.9%	0.2%
Bergen	2,406	2,368	98.4%	2,212	2,169	98.1%	-0.4%
Burlington	3,541	3,462	97.8%	3,221	3,157	98.0%	0.2%
Camden	11,930	11,698	98.1%	10,948	10,712	97.8%	-0.2%
Cape May	861	857	99.5%	758	765	100.9%	1.4%
Cumberland	5,201	5,147	99.0%	4,789	4,779	99.8%	0.8%
Essex	18,140	17,318	95.5%	16,461	15,771	95.8%	0.3%
Gloucester	3,178	3,155	99.3%	2,886	2,850	98.8%	-0.5%
Hudson	7,336	7,105	96.9%	6,763	6,573	97.2%	0.3%
Hunterdon	149	148	99.3%	117	127	108.5%	9.2%
Mercer	4,878	4,736	97.1%	4,410	4,287	97.2%	0.1%
Middlesex	4,687	4,597	98.1%	4,253	4,162	97.9%	-0.2%
Monmouth	3,331	3,275	98.3%	3,002	2,929	97.6%	-0.8%
Morris	839	831	99.0%	721	716	99.3%	0.3%
Ocean	3,663	3,590	98.0%	3,269	3,219	98.5%	0.5%
Passaic	7,170	7,043	98.2%	6,391	6,260	98.0%	-0.3%
Salem	2,273	2,188	96.3%	2,212	2,124	96.0%	-0.2%
Somerset	947	940	99.3%	812	790	97.3%	-2.0%
Sussex	381	385	101.0%	356	356	100.0%	-1.0%
Union	8,294	7,978	96.2%	7,837	7,510	95.8%	-0.4%
Warren	539	540	100.2%	443	443	100.0%	-0.2%
<b>NJ TOTALS</b>	<b>94,449</b>	<b>92,051</b>	<b>97.5%</b>	<b>86,109</b>	<b>83,941</b>	<b>97.5%</b>	<b>0.0%</b>

SOURCE: NJKiDS (Based on Federal Performance Measures - OCSE-157)

\* Information on Out of Wedlock Births obtained from NJ Bureau of Vital Statistics

**TABLE 14:**  
**OFFICE OF**  
**CHILD SUPPORT**  
**SERVICES**

**OFFICE OF CHILD SUPPORT SERVICES**  
**STATE SUMMARY**  
**TITLE IV-D REPORT OF CASES WITH ORDERS**  
Comparison of September (FFY 2023 vs. FFY 2024)

County	SEPTEMBER 2023			SEPTEMBER 2024			Increase or Decrease (-) from FFY 2023 to FFY 2024
	Total Cases	Cases with Orders	% of Cases with Orders	Total Cases	Cases with Orders	% of Cases with Orders	
Atlantic	9,479	8,637	91.1%	8,919	8,192	91.8%	0.7%
Bergen	9,703	9,377	96.6%	9,406	9,128	97.0%	0.4%
Burlington	10,826	9,811	90.6%	10,501	9,437	89.9%	-0.8%
Camden	23,550	21,879	92.9%	22,454	20,923	93.2%	0.3%
Cape May	2,374	2,259	95.2%	2,255	2,131	94.5%	-0.7%
Cumberland	9,999	9,428	94.3%	9,485	9,012	95.0%	0.7%
Essex	32,758	28,505	87.0%	31,942	27,193	85.1%	-1.9%
Gloucester	8,317	7,947	95.6%	7,915	7,496	94.7%	-0.8%
Hudson	16,502	14,649	88.8%	16,201	14,249	88.0%	-0.8%
Hunterdon	1,061	1,006	94.8%	989	950	96.1%	1.2%
Mercer	10,795	9,647	89.4%	10,414	9,210	88.4%	-0.9%
Middlesex	14,397	13,178	91.5%	13,866	12,686	91.5%	0.0%
Monmouth	10,109	9,506	94.0%	9,526	8,921	93.6%	-0.4%
Morris	4,629	4,465	96.5%	4,438	4,298	96.8%	0.4%
Ocean	11,693	11,221	96.0%	11,072	10,608	95.8%	-0.2%
Passaic	15,576	13,690	87.9%	14,546	13,172	90.6%	2.7%
Salem	3,461	3,265	94.3%	3,368	3,145	93.4%	-1.0%
Somerset	3,698	3,312	89.6%	3,466	3,123	90.1%	0.5%
Sussex	2,193	2,154	98.2%	2,116	2,071	97.9%	-0.3%
Union	15,160	14,275	94.2%	14,560	13,843	95.1%	0.9%
Warren	2,111	1,997	94.6%	1,956	1,878	96.0%	1.4%
<b>NJ TOTALS</b>	<b>218,391</b>	<b>200,208</b>	<b>91.7%</b>	<b>209,395</b>	<b>191,666</b>	<b>91.5%</b>	<b>-0.1%</b>

SOURCE: NJKiDS (Based on Federal Performance Measures - OCSE-157)

**TABLE 15:**  
**OFFICE OF**  
**CHILD SUPPORT**  
**SERVICES**

**OFFICE OF CHILD SUPPORT SERVICES**  
**STATE SUMMARY**  
**TITLE IV-D COLLECTIONS ON CURRENT SUPPORT**  
Comparison of September (FFY 2023 vs. FFY 2024)

County	SEPTEMBER 2023			SEPTEMBER 2024			Increase or Decrease (-) from FFY 2023 to FFY 2024
	Total Current Support Due	Total Current Support Distributed	Total Collection Rate	Total Current Support Due	Total Current Support Distributed	Total Collection Rate	
Atlantic	\$3,212,186	\$2,049,502	63.8%	\$3,134,504	\$1,979,391	63.1%	-0.7%
Bergen	\$6,847,631	\$5,075,362	74.1%	\$6,734,930	\$4,891,408	72.6%	-1.5%
Burlington	\$4,709,487	\$3,231,489	68.6%	\$4,610,832	\$3,165,354	68.7%	0.0%
Camden	\$6,771,826	\$3,972,113	58.7%	\$6,617,620	\$3,860,711	58.3%	-0.3%
Cape May	\$886,001	\$612,065	69.1%	\$850,501	\$579,102	68.1%	-1.0%
Cumberland	\$2,649,537	\$1,533,152	57.9%	\$2,558,090	\$1,493,682	58.4%	0.5%
Essex	\$9,135,923	\$5,266,892	57.7%	\$8,978,401	\$5,215,207	58.1%	0.4%
Gloucester	\$3,468,872	\$2,224,032	64.1%	\$3,280,995	\$2,172,648	66.2%	2.1%
Hudson	\$6,412,966	\$4,014,644	62.6%	\$6,257,064	\$3,927,277	62.8%	0.2%
Hunterdon	\$895,810	\$757,837	84.6%	\$852,301	\$689,300	80.9%	-3.7%
Mercer	\$3,501,810	\$2,195,816	62.7%	\$3,532,391	\$2,200,723	62.3%	-0.4%
Middlesex	\$6,445,677	\$4,389,661	68.1%	\$6,341,193	\$4,291,878	67.7%	-0.4%
Monmouth	\$5,489,547	\$3,926,022	71.5%	\$5,208,214	\$3,772,620	72.4%	0.9%
Morris	\$3,565,432	\$2,547,430	71.4%	\$3,430,335	\$2,424,706	70.7%	-0.8%
Ocean	\$5,436,367	\$3,765,158	69.3%	\$5,273,418	\$3,639,504	69.0%	-0.2%
Passaic	\$5,466,822	\$3,385,888	61.9%	\$5,450,181	\$3,365,980	61.8%	-0.2%
Salem	\$982,126	\$576,127	58.7%	\$939,101	\$556,479	59.3%	0.6%
Somerset	\$2,287,329	\$1,822,965	79.7%	\$2,215,765	\$1,791,272	80.8%	1.1%
Sussex	\$1,426,803	\$1,081,907	75.8%	\$1,359,427	\$1,022,241	75.2%	-0.6%
Union	\$6,134,585	\$3,983,038	64.9%	\$6,070,943	\$3,937,769	64.9%	-0.1%
Warren	\$1,038,115	\$778,744	75.0%	\$1,002,508	\$782,164	78.0%	3.0%
<b>NJ TOTALS</b>	<b>\$86,764,852</b>	<b>\$57,189,843</b>	<b>65.9%</b>	<b>\$84,698,714</b>	<b>\$55,759,419</b>	<b>65.8%</b>	<b>-0.1%</b>

SOURCE: NJKiDS (Based on Federal Performance Measures - OCSE-157)

**TABLE 16:**  
**OFFICE OF**  
**CHILD SUPPORT**  
**SERVICES**

**OFFICE OF CHILD SUPPORT SERVICES**  
**STATE SUMMARY**  
**TITLE IV-D CASES ARREARS COLLECTION REPORT**  
Comparison of September (FFY 2023 vs. FFY 2024)

County	SEPTEMBER 2023			SEPTEMBER 2024			Increase or Decrease (-) from FFY 2023 to FFY 2024
	Total Cases with Arrears	Total Amount Collected	Average Arrears Collection per Case	Total Cases with Arrears	Total Amount Collected	Average Arrears Collection per Case	
Atlantic	5,859	\$510,083	\$87.06	5,569	\$505,210	\$90.72	\$3.66
Bergen	6,197	\$946,616	\$152.75	6,109	\$1,052,769	\$172.33	\$19.58
Burlington	6,608	\$796,279	\$120.50	6,329	\$732,562	\$115.75	-\$4.76
Camden	13,319	\$1,277,338	\$95.90	12,823	\$1,206,332	\$94.08	-\$1.83
Cape May	1,551	\$174,079	\$112.24	1,500	\$231,206	\$154.14	\$41.90
Cumberland	5,843	\$455,493	\$77.96	5,752	\$526,325	\$91.50	\$13.55
Essex	17,450	\$1,849,667	\$106.00	16,589	\$1,987,099	\$119.78	\$13.79
Gloucester	5,281	\$499,571	\$94.60	5,022	\$575,931	\$114.68	\$20.08
Hudson	10,056	\$1,071,242	\$106.53	9,654	\$1,053,144	\$109.09	\$2.56
Hunterdon	651	\$109,452	\$168.13	615	\$90,417	\$147.02	-\$21.11
Mercer	6,575	\$739,599	\$112.49	6,344	\$732,930	\$115.53	\$3.04
Middlesex	8,873	\$1,021,130	\$115.08	8,550	\$1,282,694	\$150.02	\$34.94
Monmouth	6,241	\$796,587	\$127.64	5,993	\$976,896	\$163.01	\$35.37
Morris	3,045	\$509,145	\$167.21	2,963	\$541,690	\$182.82	\$15.61
Ocean	7,119	\$840,721	\$118.10	6,964	\$986,789	\$141.70	\$23.60
Passaic	9,254	\$938,545	\$101.42	9,016	\$1,022,462	\$113.41	\$11.98
Salem	1,982	\$132,901	\$67.05	1,898	\$173,115	\$91.21	\$24.16
Somerset	2,204	\$339,454	\$154.02	2,092	\$351,428	\$167.99	\$13.97
Sussex	1,392	\$194,680	\$139.86	1,323	\$190,331	\$143.86	\$4.01
Union	9,380	\$1,066,958	\$113.75	9,037	\$1,094,500	\$121.11	\$7.37
Warren	1,347	\$138,196	\$102.60	1,274	\$137,394	\$107.84	\$5.25
<b>NJ TOTALS</b>	<b>130,227</b>	<b>\$14,407,736</b>	<b>\$110.64</b>	<b>125,416</b>	<b>\$15,451,224</b>	<b>\$123.20</b>	<b>\$12.56</b>

SOURCE: OCSE-157 Child Support Enforcement Annual Data Report

**Table 17**  
**WFNJ****WORK FIRST NEW JERSEY STATISTICAL SUMMARY****SEPTEMBER 2024**

COUNTY	EMPLOYMENT DIRECTED ACTIVITIES			EMPLOYED OPEN (WFNJ RECIPIENT)	SUPPORT SERVICES ON ACTIVE CASE		CLOSED FOR EMPLOYMENT THIS MONTH	POST ASSISTANCE CHILD CARE
	CWEP	ALL OTHER TRAINING	JOB SEARCH		CHILD CARE	TRAINING REL. EXPENSES		
ATLANTIC	15	67	5	26	24	51	10	21
BERGEN	30	0	60	7	58	16	3	5
BURLINGTON	135	5	54	23	30	16	8	8
CAMDEN	35	188	15	66	117	7	10	7
CAPE MAY	0	6	2	0	1	3	1	4
CUMBERLAND	0	33	37	14	25	49	11	2
ESSEX	143	210	17	112	123	230	36	74
GLOUCESTER	5	2	3	16	11	6	5	17
HUDSON	16	242	79	107	225	95	24	26
HUNTERDON	1	0	7	1	1	0	1	1
MERCER	79	211	13	61	105	24	12	52
MIDDLESEX	0	37	116	37	64	1	6	0
MONMOUTH	13	12	19	23	29	3	3	22
MORRIS	2	12	3	7	2	0	1	0
OCEAN	0	215	0	4	20	18	2	15
PASSAIC	155	91	0	18	71	60	9	3
SALEM	0	13	2	5	6	2	3	4
SOMERSET	85	30	14	11	40	2	8	0
SUSSEX	1	0	2	2	0	0	1	1
UNION	119	39	0	45	55	38	19	0
WARREN	0	11	3	2	3	0	0	0
STATE TOTAL	834	1,424	451	587	1,010	621	173	262

Data is derived from NJ Division of Family Development's FAMIS Reports RM064-01 &amp; RM703-51, AdHoc Reports 5549 &amp; 5598 and SDW Report WR00022WZ\_CC

**DIVISION OF FAMILY DEVELOPMENT CURRENT PROGRAM STATISTICS  
SEPTEMBER 2024**

## **ACRONYMS**

**EMERGENCY ASSISTANCE (EA)** - Payments to those eligible for WFNJ/TANF or WFNJ/GA, authorized during the 30 consecutive days immediately following the emergency (defined as a substantial loss of shelter, food, clothing, or household furnishings by fire, flood or other similar disaster) or if eligible individual or family is in an imminent or actual state of homelessness.

**NJ SNAP** - Formerly the Food Stamp Program, now known as NJ SNAP (NJ Supplemental Nutrition Assistance Program) authorized by Congress as a nutritional supplement program to provide low income households with more food of greater variety and better nutrition. Program eligibility is based on household income, resources, and expenses for medical, shelter, and dependent care. CWA staff refers certain recipients to the New Jersey Department of Labor for participation in the Food Stamp Employment and Training Program.

**FAMIS:** Family Assistance Management Information System

**GAAS:** General Assistance Automated System

**NJKIDS:** New Jersey Kids Deserve Support (Child Support Information Management System)

**NJ MMIS SHARED DATA WAREHOUSE:** The Shared Data Warehouse (SDW) is the repository for New Jersey's DFD and Medicaid data. Since 2003, OptumInsight has administered the SDW and provided access to the data through a reporting tool known as Business Objects.

**OMEGA:** Online Management of Economic Goal Achievement

**SSI-EA:** Supplemental Security Income-Emergency Assistance

**WFNJ:** Work First New Jersey - Fully implemented July 1, 1997, this is New Jersey's welfare reform program which responds to the requirements of the Federal Personal Responsibility and Work Opportunity Reconciliation Act (**PRWORA**) of 1996. PRWORA established Temporary Assistance for Needy Families (**TANF**) as the replacement for AFDC cash assistance. WFNJ includes two segments, **WFNJ/TANF** for families with children, and **WFNJ/GA** (General Assistance) for single adults and couples without dependent children. WFNJ emphasizes achieving self-sufficiency and limits lifetime receipt of financial assistance to a total of five years.

**DIVISION OF FAMILY DEVELOPMENT CURRENT PROGRAM STATISTICS  
SEPTEMBER 2024**

## **EXPLANATORY NOTES**

The Department of Human Services Division of Family Development provides basic income and an opportunity to achieve self-sufficiency for individuals and families served by the Division's programs. The Division provides leadership, direction and supervision to those public agencies responsible for administering those programs and plans for and develops policies to promote self-sufficiency.

### **WFNJ STATISTICAL SUMMARY (TABLE 17)**

**Employment Directed Activities (EDA)** - From Activities Summary Report (OMEGA report # RM064). Unduplicated count of persons participating in Community Work Experience Program (CWEP), All Other Training, or Job Search.

**Number of Persons Employed This Month, Still Receiving TANF** - Individuals with open "empl" activity on OMEGA. Ad hoc report.

**Participants Receiving Child Care Services** - From Issuance Disbursement Summary (OMEGA report # RM703). Total number of active participants who show receipt of Child Care.

**Number of Persons Closed on FAMIS Due to Employment** - From FAMIS report #5549-RM-2

**Post TANF and Receiving Child Care** - Persons no longer in receipt of TANF but still receiving child care. From Share Data Warehouse Child Care case count based on Child Care payments (SDW report WR00022WZ\_CC ).