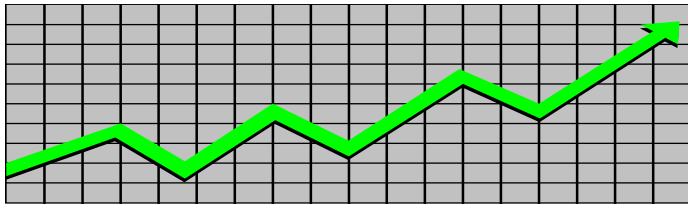


State of New Jersey
Department of Human Services
Division of Family Development

CURRENT PROGRAM STATISTICS



December 2019
Natasha Johnson, Assistant Commissioner

**DIVISION OF FAMILY DEVELOPMENT CURRENT PROGRAM STATISTICS
DECEMBER 2019**

TABLE OF CONTENTS

HIGHLIGHTS:

WFNJ/TANF	ii
NJ SNAP	ii
EMERGENCY ASSISTANCE	ii
GENERAL ASSISTANCE	iii
GA Emergency Assistance.....	iii
GA Program.....	iii
CHILD SUPPORT SERVICES	iii
WORK FIRST NEW JERSEY (WFNJ)	iii
STATISTICS- BY STATE & COUNTY	1
Table 1: WFNJ/TANF Families & Persons (NJ Statewide) December 2017 to 2019.....	1
Table 2: WFNJ/TANF Families (by County)- December 2019.....	2
Table 2B: WFNJ/TANF Persons, Adults, & Children (by County)- December 2019.....	3
Table 3: TANF Work Participation Rates Over 12 Month Period (by County)- December 2019....	4
Table 4: TANF Work Participation Rates Over 12 Month Period (NJ Statewide) December 2019.	5
Table 5: NJ SNAP Households/Persons (NJ Statewide) December 2017 to 2019.....	6
Table 6: NJ SNAP Recipient Trends (NJ Statewide) December 2017 to 2019.....	7
Table 7: NJ SNAP Households/Persons (by County)- December 2019.....	8
Table 8: Emergency Assistance Program (NJ Statewide) December 2017 to 2019.....	9
Table 9: Emergency Assistance Program (by County)- December 2019.....	10
Table 10: General Assistance Program (NJ Statewide) December 2017 to 2019.....	11
Table 11: General Assistance Program (by County)- December 2019	12
Table 12: Child Support Services Distributions (NJ Statewide) FFY 2020.....	13
Table 13: Child Support Services Paternities Established- December 2019.....	14
Table 14: Child Support Services Cases With Orders- December 2019.....	15
Table 15: Child Support Services Collections On Current Support- December 2019.....	16
Table 16: Child Support Services Cases With Payments On Arrears- December 2019.....	17
Table 17: WFNJ Statistical Summary- December 2019.....	18
ACRONYMS	19
EXPLANATORY NOTES	20
WFNJ Statistical Summary (Table 17).....	20

**DIVISION OF FAMILY DEVELOPMENT CURRENT PROGRAM STATISTICS
DECEMBER 2019**

Each month the Division of Family Development publishes its program statistics for: WFNJ/TANF, NJ SNAP, Emergency Assistance, General Assistance, and Child Support Services. When possible, information is provided separately for children and adults. Many tables also provide trend data with information broken down by county for readers to consider. This report is compiled and prepared by The Bureau of Research & Reporting.

WFNJ/TANF

- As of the end of December, the TANF caseload had decreased by 1,156 cases, from 12,113 in December 2018 to 10,957 in December 2019, a decrease of 9.5%.

- The counties with caseloads that increased the most since December 2018 were Ocean (0.9%), Hunterdon (6.5%) and Cape May (17.0%).

- The counties with caseloads that decreased the most since December 2018 were Hudson (-14.1%), Passaic (-14.4%) and Cumberland (-17.3%).

- Of the WFNJ/TANF cases, 3,689 or 33.7% were child-only in December 2019.

- The counties with the most child-only cases were Camden (611), Essex (446) and Passaic (376).

- Essex (4,869), Camden (3,691), Hudson (3,288), Passaic (2,959) and Atlantic (1,796) counties had the greatest number of persons receiving TANF in December 2019.

NJ SNAP (formerly FOOD STAMPS)

- In December 2019, there were 340,602 households receiving NJ SNAP benefits. The number of NJ SNAP households decreased by 17,723 or 4.9%, since December 2018.

- There were 671,271 persons receiving NJ SNAP benefits as of December 2019, a decrease of 40,960 or 5.8% since December 2018.

- The county having the highest caseload increase since December 2018 was Hunterdon (1.1%).

- The counties having the highest caseload decrease since December 2018 are Cumberland (-6.7%), Atlantic (-7.3%) and Burlington (-7.7%).

EMERGENCY ASSISTANCE

- There were 1,632 TANF families receiving Emergency Assistance (EA) in December 2019, an increase of 12 or 0.7% since December 2018.

- In December 2019, EA payments were made for 532 SSI recipients.

**DIVISION OF FAMILY DEVELOPMENT CURRENT PROGRAM STATISTICS
DECEMBER 2019**

- There were 2,039 GA cases with Emergency Assistance payments in December 2019, an increase of 160 or 8.5% since December 2018.
 - The counties that showed the highest percent increase in Emergency Assistance payments were Salem (80.0%), Somerset (80.6%) and Monmouth (144.4%).
 - The counties that showed the highest percent decrease in Emergency Assistance payments were Cumberland (-18.2%), Middlesex (-18.6%) and Burlington (-38.7%).

GENERAL ASSISTANCE

- The total numbers of cases receiving GA has decreased from 10,664 to 9,926 since December 2018, a decrease of 6.9%.
- There were 3,918 Employable GA and 6,008 Unemployable GA cases in December 2019.
- The counties that showed a percent increase for GA cases were Sussex (25.0%), Somerset (30.3%) and Hunterdon (56.2%) since December 2018.
- The counties that showed the highest percent decrease for GA cases since December 2018 were Hudson (-16.5%), Burlington (-19.3%) and Bergen (-23.3%).
- In December 2019, GA cases showed a 0.4% increase since November 2019.

CHILD SUPPORT SERVICES (Quarterly Report)

- The total collection for the Child Support Services Program was about \$304 million from October 2019 to December 2019, a decrease of 1.2 percent over the same period for FFY 2019.
- Total distributions decreased 1.6% from December 2018.

WORK FIRST NEW JERSEY (WFNJ)

- During the report month of December 2019, there were 1,104 families in which at least one member was employed and an additional 143 families whose WFNJ assistance cases were closed due to employment - related earnings.
- The three counties with the greatest number of employed active WFNJ recipients were: Essex (242), Camden (147) and Hudson (123).
- There were 946 former TANF cases receiving post-TANF support in the form of child care assistance.

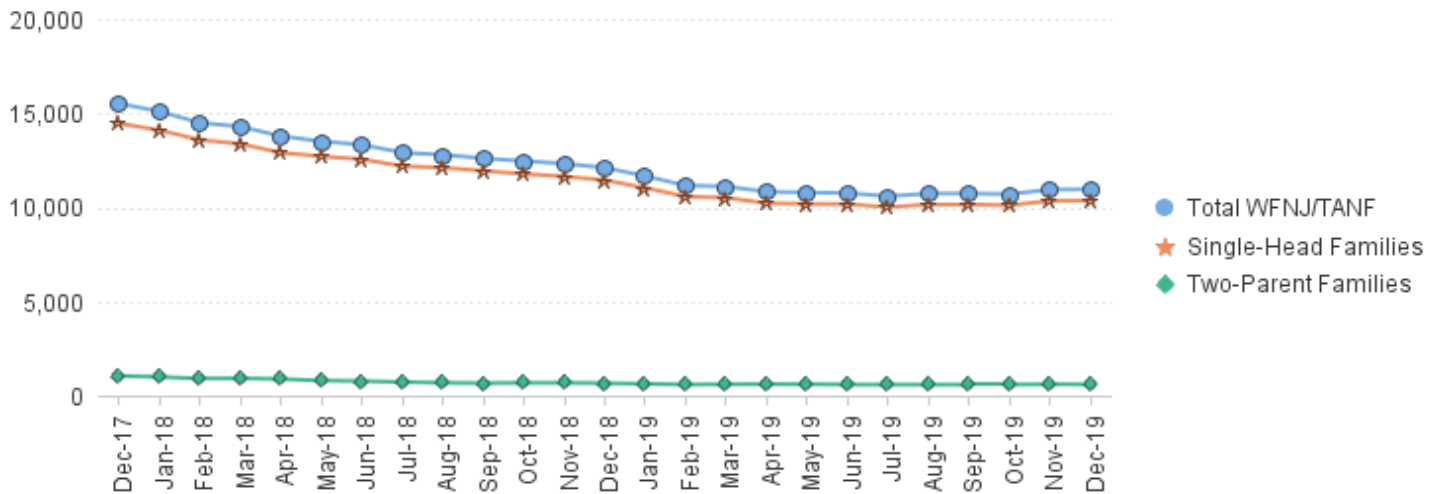
TABLE 1: WFNJ/TANF PROGRAM

STATEWIDE NUMBER OF APPLICATIONS AND TERMINATIONS DURING DECEMBER 2019

NUMBER OF ELIGIBLE FAMILIES & PERSONS RECEIVING WFNJ/TANF FOR DECEMBER 2019

		DECEMBER 2017 THROUGH DECEMBER 2019										
		Cases Added	Cases Closed	Child-Only Cases ‡	Total Single-Head Families	2-Parent Families	Total WFNJ/TANF Families	%CHNG (1 Yr.)	Total Persons	%CHNG (1 Yr.)	Adults	Children
2017	DEC	1,434	1,686	4,850	14,470	1,054	15,524	-19.2%	39,246	-17.6%	11,728	27,518
2017	Average	1,444	1,818	5,178	15,395	1,069	16,464		41,327		12,355	28,972
2018	JAN	1,289	1,706	4,770	14,103	994	15,097	-18.9%	38,222	-17.7%	11,321	26,901
	FEB	1,226	1,885	4,695	13,589	910	14,499	-19.3%	36,645	-18.2%	10,714	25,931
	MAR	1,097	1,398	4,670	13,377	918	14,295	-18.7%	35,943	-18.3%	10,543	25,400
	APR	1,050	1,548	4,610	12,905	883	13,788	-18.6%	34,557	-18.6%	10,061	24,496
	MAY	1,177	1,506	4,514	12,715	800	13,515	-17.6%	33,791	-18.0%	9,801	23,990
	JUN	1,287	1,555	4,483	12,558	773	13,331	-17.4%	33,203	-18.1%	9,621	23,582
	JUL	1,111	1,517	4,389	12,192	723	12,915	-18.6%	32,023	-19.6%	9,249	22,774
	AUG	1,241	1,440	4,349	12,114	681	12,795	-18.8%	32,848	-17.2%	9,127	23,721
	SEP	1,341	1,600	4,287	11,944	665	12,609	-19.2%	31,154	-20.7%	8,987	22,167
	OCT	1,318	1,455	4,222	11,778	683	12,461	-19.5%	31,066	-20.2%	8,922	22,144
	NOV	1,191	1,381	4,180	11,645	681	12,326	-21.4%	30,734	-22.3%	8,827	21,907
	DEC	929	1,194	4,128	11,449	664	12,113	-22.0%	30,318	-22.7%	8,649	21,669
2018	Average	1,188	1,515	4,441	12,531	781	13,312		33,375		9,652	23,724
2019	JAN	967	1,444	4,093	11,034	628	11,662	-22.8%	29,021	-24.1%	8,197	20,824
	FEB	791	1,408	3,913	10,577	589	11,166	-23.0%	27,815	-24.1%	7,842	19,973
	MAR	989	1,340	3,986	10,516	597	11,113	-22.3%	27,603	-23.2%	7,724	19,879
	APR	998	1,271	3,906	10,216	614	10,830	-21.5%	26,968	-22.0%	7,538	19,430
	MAY	1,084	1,174	3,830	10,191	606	10,797	-20.1%	26,865	-20.5%	7,573	19,292
	JUN	1,024	1,135	3,790	10,175	588	10,763	-19.3%	26,674	-19.7%	7,561	19,113
	JUL	1,040	1,231	3,710	10,014	580	10,594	-18.0%	26,323	-17.8%	7,464	18,859
	AUG	1,209	1,135	3,723	10,158	582	10,740	-16.1%	26,735	-18.6%	7,599	19,136
	SEP	1,055	1,048	3,679	10,153	586	10,739	-14.8%	26,803	-14.0%	7,646	19,157
	OCT	1,137	1,253	3,556	10,120	586	10,706	-14.1%	26,933	-13.3%	7,736	19,197
	NOV	1,181	1,159	3,664	10,348	605	10,953	-11.1%	27,644	-10.1%	7,894	19,750
	DEC	1,053	1,042	3,689	10,364	593	10,957	-9.5%	27,766	-8.4%	7,861	19,905
2019	Average	1,044	1,220	3,795	10,322	596	10,918		27,263		7,720	19,543

**NJ STATEWIDE
Eligible Families Receiving WFNJ/TANF
DECEMBER 2017 THROUGH DECEMBER 2019**



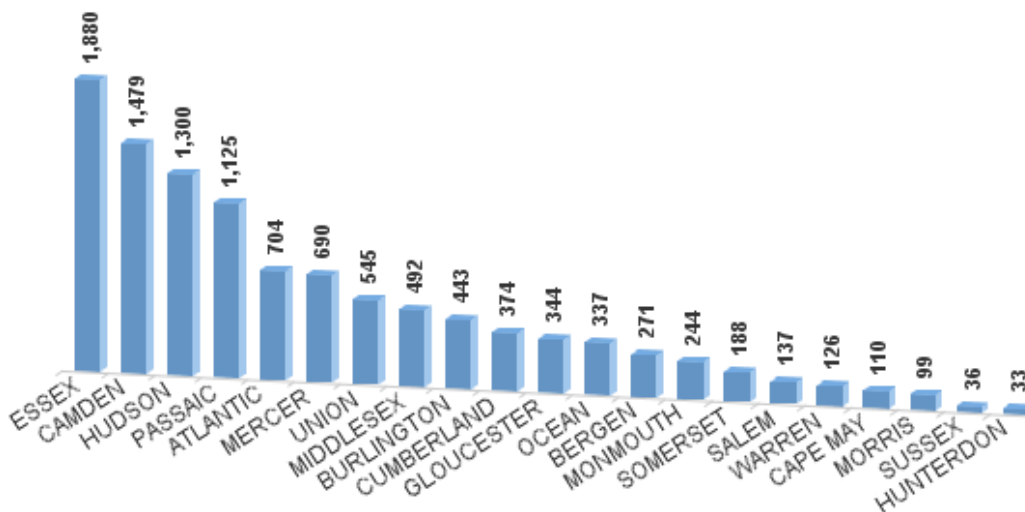
Data is derived from NJ MMIS Shared Data Warehouse Issuance files.
Effective July 2013 this data query source was converted to the SDW

‡ Child-only cases are defined as families in which no eligible adult receives TANF program benefits, yet the family continues to be headed by at least one of the biological parents, or grandparents, or other appropriate adult.

TABLE 2:
WFNJ/TANF PROGRAM **NUMBER OF APPLICATIONS AND TERMINATIONS BY COUNTY DURING DECEMBER 2019**
NUMBER OF ELIGIBLE FAMILIES RECEIVING WFNJ/TANF FOR DECEMBER 2019

County	Cases Added	Cases Closed **	Child-	Total		Total		%CHNG (3 Mon)	%CHNG (1 Yr.)
			Only Cases ‡	1-Adult Cases	Single-Heac Families	2-Parent Families	WFNJ/TANF Families		
ATLANTIC	59	69	288	380	668	36	704	-0.3%	-12.3%
BERGEN	15	21	60	189	249	22	271	0.0%	-6.2%
BURLINGTON	68	59	148	272	420	23	443	10.8%	-0.7%
CAMDEN	114	71	611	816	1,427	52	1,479	8.7%	-9.9%
CAPE MAY	8	9	42	63	105	5	110	8.9%	17.0% Δ
CUMBERLAND	38	40	163	185	348	26	374	5.4%	-17.3% *
ESSEX	251	210	446	1,342	1,788	92	1,880	6.2%	-12.0%
GLOUCESTER	25	39	149	186	335	9	344	-1.4%	-4.7%
HUDSON	133	167	369	843	1,212	88	1,300	-3.9%	-14.1% *
HUNTERDON	1	1	11	18	29	4	33	10.0%	6.5% Δ
MERCER	52	51	247	415	662	28	690	4.9%	-4.2%
MIDDLESEX	40	52	204	257	461	31	492	-2.8%	-4.5%
MONMOUTH	27	18	96	137	233	11	244	3.8%	-8.3%
MORRIS	7	16	25	59	84	15	99	-4.8%	-6.6%
OCEAN	29	29	108	214	322	15	337	2.4%	0.9% Δ
PASSAIC	85	84	376	706	1,082	43	1,125	-1.3%	-14.4% *
SALEM	24	22	59	69	128	9	137	-1.4%	-6.8%
SOMERSET	20	15	57	122	179	9	188	5.6%	0.0%
SUSSEX	5	4	12	20	32	4	36	16.1%	-12.2%
UNION	45	47	190	294	484	61	545	-1.6%	-6.4%
WARREN	7	18	28	88	116	10	126	-7.4%	-6.0%
NJ Total	1,053	1,042	3,689	6,675	10,364	593	10,957	2.3%	-9.5%

**Total WFNJ/TANF Families
 DECEMBER 2019
 By County**



Data is derived from NJ MMIS Shared Data Warehouse Issuance files.
 Effective July 2013 this data query source was converted to the SDW

‡ Child-only cases are defined as families in which no eligible adult receives TANF program benefits, yet the family continues to be headed by at least one of the biological parents, or grandparents, or other appropriate adult

** 'Cases closed' include cases that received a benefit in the prior month, but did not receive any TANF benefit for the report month.

Δ=higher caseload % change

*=lower caseload % change

TABLE 2B :

WFNJ/TANF
PROGARM

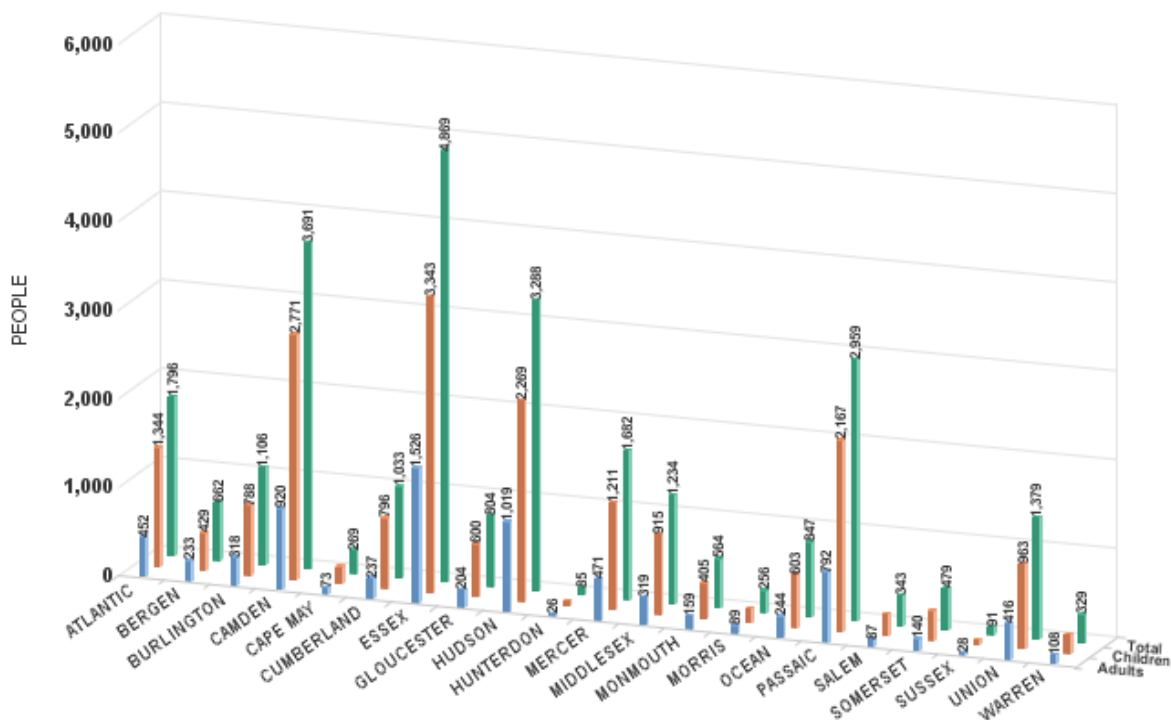
NUMBER OF PARTICIPATING PERSONS, ADULTS, AND CHILDREN
BY COUNTY FOR DECEMBER 2019

PERSONS

County	Adults	Children	Child/Adult Ratio	Total Persons	% Chng (1 Yr)	Persons Per Case
ATLANTIC	452	1,344	2.97	1,796	-9.5%	2.55
BERGEN	233	429	1.84	662	-6.1%	2.44
BURLINGTON	318	788	2.48	1,106	0.4%	2.50
CAMDEN	920	2,771	3.01	3,691	-8.0%	2.50
CAPE MAY	73	196	2.68	269	19.6% Δ	2.45
CUMBERLAND	237	796	3.36	1,033	-13.6% *	2.76
ESSEX	1,526	3,343	2.19	4,869	-10.2%	2.59
GLOUCESTER	204	600	2.94	804	-6.5%	2.34
HUDSON	1,019	2,269	2.23	3,288	-11.5% *	2.53
HUNTERDON	26	59	2.27	85	7.6% Δ	2.58
MERCER	471	1,211	2.57	1,682	-2.6%	2.44
MIDDLESEX	319	915	2.87	1,234	-1.8%	2.51
MONMOUTH	159	405	2.55	564	-8.9%	2.31
MORRIS	89	167	1.88	256	-3.4%	2.59
OCEAN	244	603	2.47	847	-3.8%	2.51
PASSAIC	792	2,167	2.74	2,959	-15.7% *	2.63
SALEM	87	256	2.94	343	-9.7%	2.50
SOMERSET	140	339	2.42	479	4.4% Δ	2.55
SUSSEX	28	63	2.25	91	-4.2%	2.53
UNION	416	963	2.31	1,379	-6.8%	2.53
WARREN	108	221	2.05	329	-6.3%	2.61
NJ Total	7,861	19,905	2.53	27,766	-8.4%	2.53

Δ=higher caseload % change

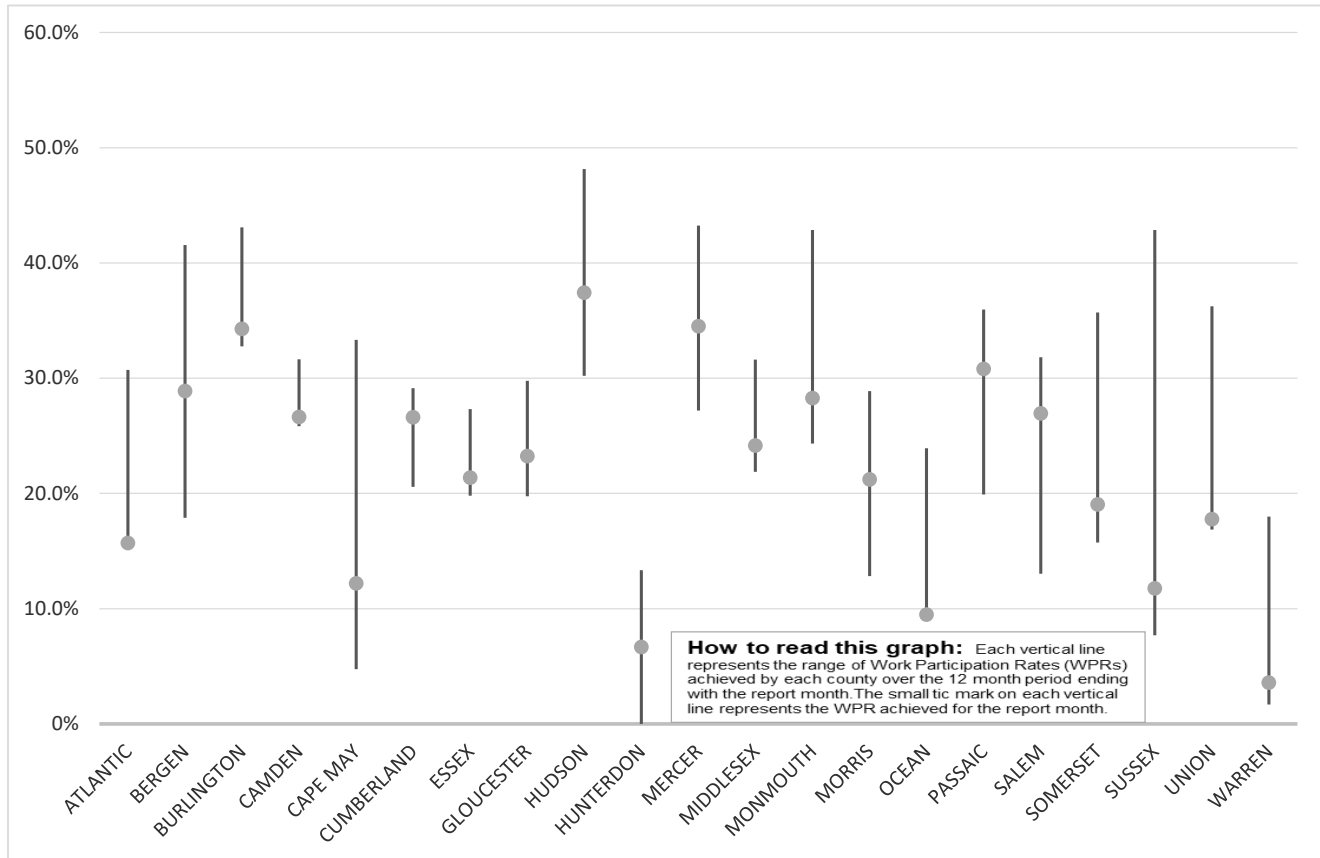
*=lower caseload % change



Data is derived from NJ MMIS Shared Data Warehouse Issuance files.
Effective July 2013 this data query source was converted to the SDW

TABLE 3 :

Work Participation Rates Achieved Over 12 Month Period
Ending with DECEMBER 2019

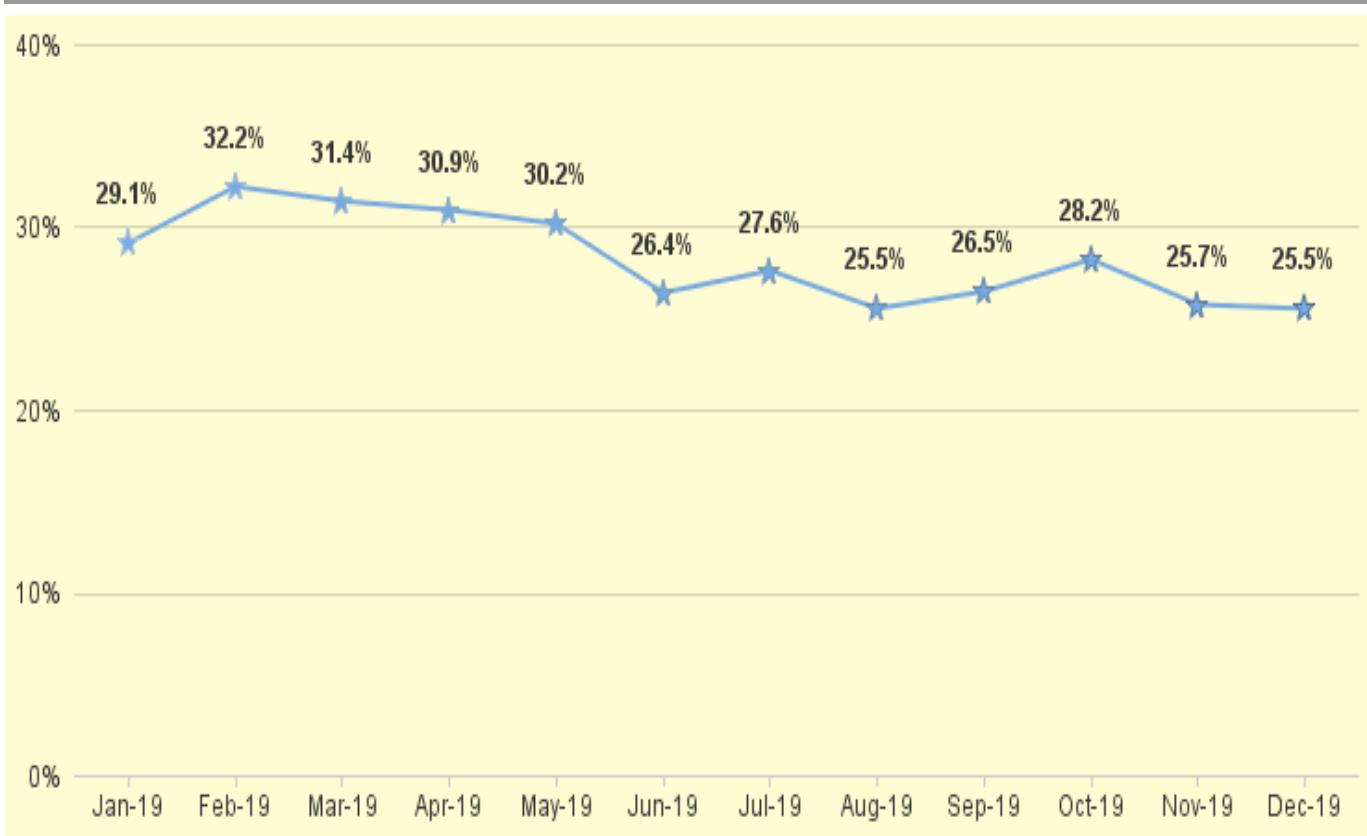


Data is derived from NJ MMIS Shared Data Warehouse Issuance files.

Effective July 2013 this data query source was converted to the SDW

TABLE 4 :

WFNJ/TANF Work Participation Rates
for 12-Month Period Ending with DECEMBER 2019 Statewide



* The Work Participation rate measures the number of countable Temporary Assistance for Needs Families (TANF) participants based on federal formula. The reported rate is considered to be preliminary until officially calculated by the federal government soon after the close of each federal fiscal year.

TABLE 5 :

NJ SNAP
(FOOD STAMPS)NUMBER OF PARTICIPATING HOUSEHOLDS, PERSONS, ADULTS
AND CHILDREN FOR DECEMBER 2019 (STATEWIDE)

DECEMBER 2017 THROUGH DECEMBER 2019

		HOUSEHOLDS				PERSONS				Age 60+	People with a disability
		WFNJ/TANF	Other low income	Total	% CHNG (1 YR)	Adults	Children	TOTAL	% CHNG (1 YR)		
2017	DEC	14,648	371,916	386,564	-7.4%	404,418	367,199	771,617	-7.4%	130,292	222,460
2017	Average	15,509	379,521	395,030		413,501	374,531	788,032		131,220	220,759
2018	JAN	13,996	366,670	380,666	-6.9%	398,026	360,502	758,528	-7.1%	128,879	218,735
	FEB	13,566	364,750	378,316	-6.7%	395,314	357,938	753,252	-7.0%	128,094	217,046
	MAR	13,362	366,128	379,490	-5.8%	396,620	360,051	756,671	-5.9%	127,792	216,741
	APR	12,787	360,385	373,172	-7.0%	390,319	353,157	743,476	-7.2%	126,571	214,558
	MAY	12,646	358,605	371,251	-6.4%	388,870	351,724	740,594	-6.4%	125,945	213,705
	JUN	12,636	360,531	373,167	-5.5%	391,455	353,883	745,338	-5.3%	130,916	213,689
	JUL	12,142	355,160	367,302	-6.3%	385,535	346,628	732,163	-6.3%	129,767	211,396
	AUG	12,162	354,922	367,084	-6.1%	385,645	345,658	731,303	-6.2%	129,230	210,919
	SEP	11,978	355,023	367,001	-6.0%	386,047	344,801	730,848	-6.2%	128,684	210,278
	OCT	11,828	351,057	362,885	-5.8%	381,993	339,837	721,830	-5.8%	127,534	208,715
	NOV	11,524	349,288	360,812	-6.3%	380,136	336,835	716,971	-6.6%	126,941	208,324
	DEC	11,056	347,269	358,325	-7.3%	377,967	334,264	712,231	-7.7%	126,299	210,239
2018	Average	12,474	357,482	369,956		388,161	348,773	736,934		128,054	212,862
2019	JAN	11,080	347,492	358,572	-5.8%	378,698	333,780	712,478	-6.1%	125,563	208,860
	FEB	9,524	325,936	335,460	-11.3%	354,132	303,701	657,833	-12.7%	121,511	199,781
	MAR	10,469	341,314	351,783	-7.3%	372,223	325,898	698,121	-7.7%	123,658	205,933
	APR	10,136	336,819	346,955	-7.0%	367,367	319,361	686,728	-7.6%	122,716	204,624
	MAY	10,284	337,321	347,605	-6.4%	368,192	319,432	687,624	-7.2%	122,594	203,974
	JUN	10,149	336,301	346,450	-7.2%	367,279	317,566	684,845	-8.1%	122,060	203,512
	JUL	9,962	333,891	343,853	-6.4%	365,264	314,222	679,486	-7.2%	121,238	202,824
	AUG	10,570	336,384	346,954	-5.5%	368,890	317,373	686,263	-6.2%	121,200	203,620
	SEP	10,319	331,162	341,481	-7.0%	363,290	310,676	673,966	-7.8%	120,200	202,119
	OCT	10,242	328,140	338,382	-6.8%	360,298	305,917	666,215	-7.7%	119,254	200,853
	NOV	10,580	331,660	342,240	-5.1%	364,880	310,523	675,403	-5.8%	119,560	202,867
	DEC	10,445	330,157	340,602	-4.9%	362,992	308,279	671,271	-5.8%	119,046	205,081
2019	Average	10,313	334,715	345,028		366,125	315,561	681,686		121,550	203,671

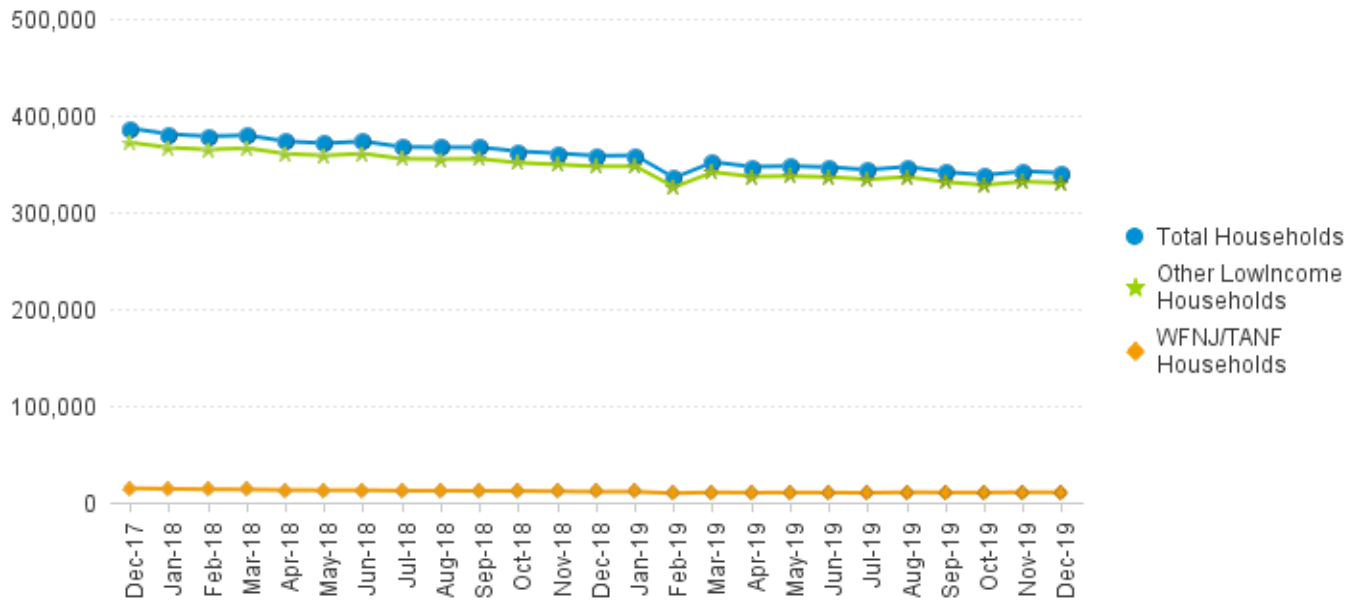
This Table is based on those Households & Persons that received SNAP issuances (benefits) during the month

Data is derived from NJ MMIS Shared Data Warehouse.
Effective July 2013 this data query source was converted to the SDW.

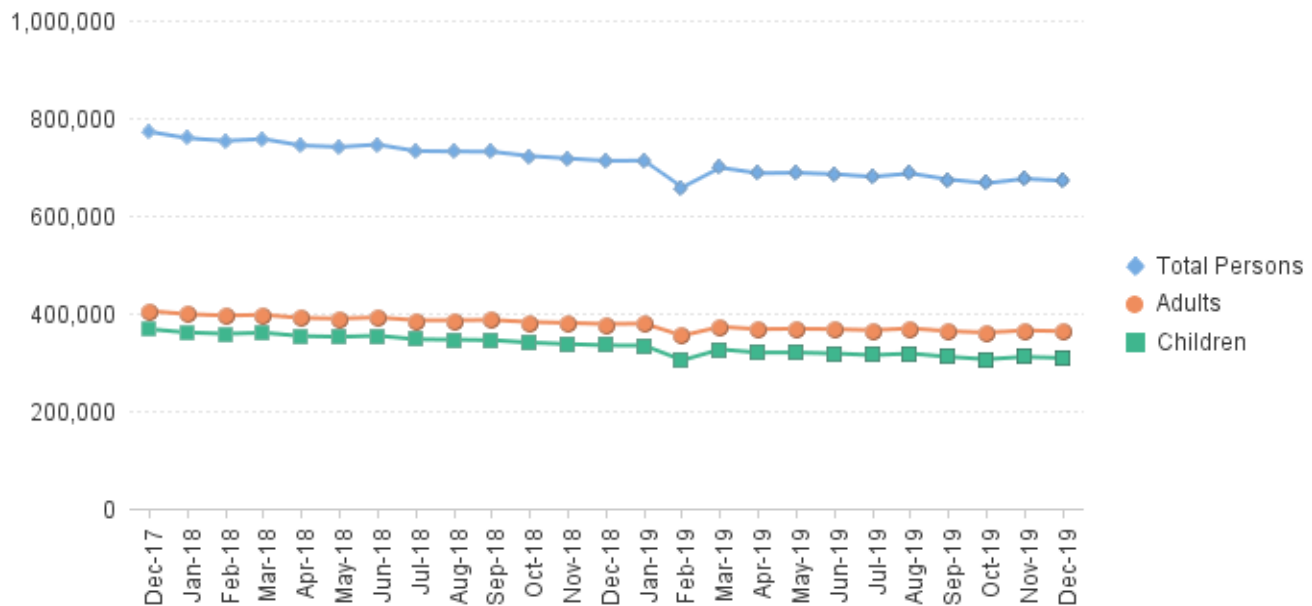
* Age 60+ and People with a disability columns are independent subsets of total persons. An individual might appear in both columns.

**TABLE 6: NJ SNAP (FOOD STAMPS)
TRENDS FOR PARTICIPATING HOUSEHOLDS & PERSONS
DECEMBER 2017 THROUGH DECEMBER 2019 (STATEWIDE)**

Statewide NJ SNAP Households: DECEMBER 2017 Through DECEMBER 2019



Statewide NJ SNAP Persons: DECEMBER 2017 Through DECEMBER 2019



Data is derived from NJ MMIS Shared Data Warehouse Issuance files.

Effective July 2013 this data query source was converted to the SDW

TABLE 7 :

NJ SNAP

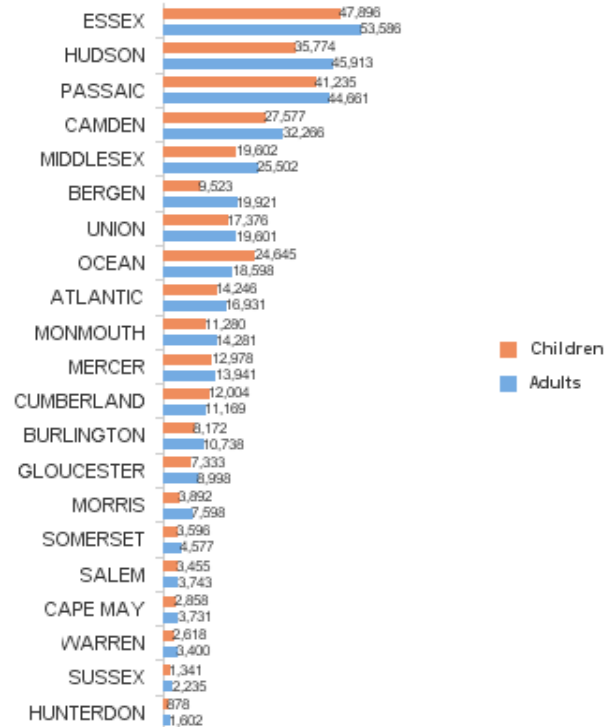
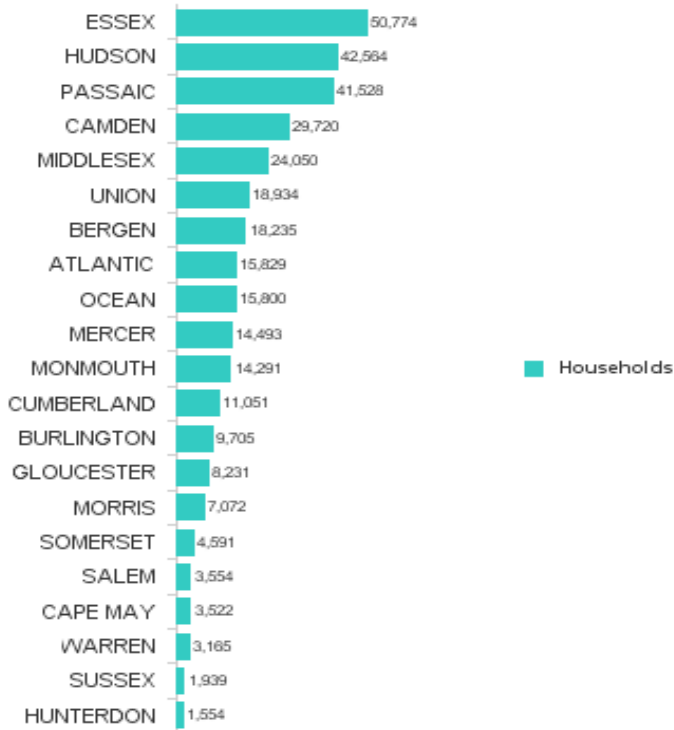
NUMBER OF PARTICIPATING HOUSEHOLDS, PERSONS, ADULTS AND CHILDREN BY COUNTY FOR DECEMBER 2019

County	HOUSEHOLDS				PERSONS				Age 60+	People with a disability
	WFNJ/TANF	Other low income	TOTAL	% Chng (1 Yr)	Adults	Children	TOTAL	% Chng (1 Yr)		
ATLANTIC	638	15,191	15,829	-7.3% *	16,931	14,246	31,177	-8.9% *	4,584	9,203
BERGEN	257	17,978	18,235	-5.0%	19,921	9,523	29,444	-7.3%	11,449	14,412
BURLINGTON	403	9,302	9,705	-7.7% *	10,738	8,172	18,910	-8.0% *	2,694	6,294
CAMDEN	1,354	28,366	29,720	-3.2%	32,266	27,577	59,843	-3.2%	7,498	17,396
CAPE MAY	102	3,420	3,522	-5.8%	3,731	2,858	6,589	-6.9%	984	2,173
CUMBERLAND	357	10,694	11,051	-6.7% *	11,169	12,004	23,173	-7.0%	2,640	6,657
ESSEX	1,883	48,891	50,774	-5.0%	53,586	47,896	101,482	-5.8%	14,313	26,873
GLOUCESTER	292	7,939	8,231	-0.4% Δ	8,998	7,333	16,331	-1.7% Δ	2,150	5,530
HUDSON	1,256	41,308	42,564	-6.4%	45,913	35,774	81,687	-7.4% *	17,188	25,480
HUNTERDON	36	1,518	1,554	1.1% Δ	1,602	878	2,480	1.2% Δ	533	1,006
MERCER	677	13,816	14,493	-2.4%	13,941	12,978	26,919	-2.9%	3,947	9,245
MIDDLESEX	475	23,575	24,050	-5.5%	25,502	19,602	45,104	-6.8%	11,834	16,355
MONMOUTH	218	14,073	14,291	-5.3%	14,281	11,280	25,561	-7.3%	5,256	9,002
MORRIS	108	6,964	7,072	-4.5%	7,598	3,892	11,490	-6.3%	3,913	5,051
OCEAN	334	15,466	15,800	-3.1%	18,598	24,645	43,243	-3.3%	4,990	9,595
PASSAIC	1,105	40,423	41,528	-5.1%	44,661	41,235	85,896	-5.5%	13,614	20,528
SALEM	122	3,432	3,554	-3.2%	3,743	3,455	7,198	-1.8%	827	2,209
SOMERSET	172	4,419	4,591	-6.5%	4,577	3,596	8,173	-6.9%	1,985	3,145
SUSSEX	46	1,893	1,939	-1.1% Δ	2,235	1,341	3,576	1.2% Δ	701	1,500
UNION	488	18,446	18,934	-4.6%	19,601	17,376	36,977	-6.0%	7,002	11,239
WARREN	122	3,043	3,165	-3.4%	3,400	2,618	6,018	-4.0%	944	2,188
NJ TOTAL	10,445	330,157	340,602	-4.9%	362,992	308,279	671,271	-5.8%	119,046	205,081

Δ=higher caseload % change

*=lower caseload % change

Total NJ SNAP Recipients DECEMBER 2019 by County



Data is derived from NJ MMIS Shared Data Warehouse.

Effective July 2013 this data query source was converted to the SDW.

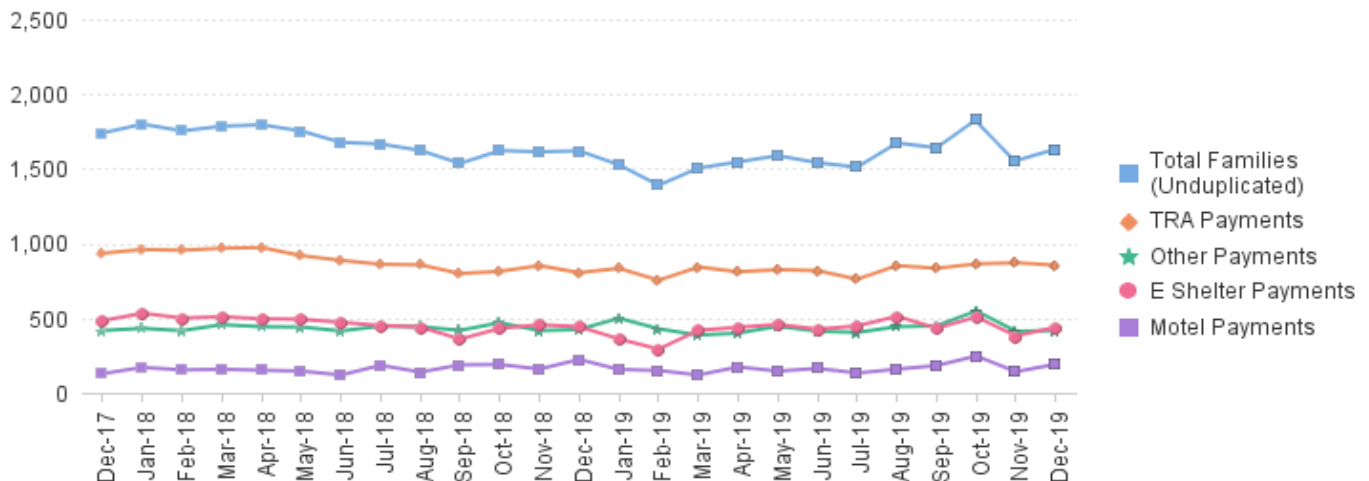
* Age 60+ and People with a disability columns are independent subsets of total persons. An individual might appear in both columns.

TABLE 8 :

EMERGENCY ASSISTANCE (STATEWIDE) **TOTAL NUMBER OF ELIGIBLE FAMILIES RECEIVING EMERGENCY ASSISTANCE PAYMENTS DECEMBER 2017 THROUGH DECEMBER 2019 - STATEWIDE**

		Total WFNJ/EA Families (Undupl)		Temp Rent Asst. Payments (Undupl)		Motel Housing Payments (Undupl)		Shelter/Transitiona Housing Payments (Undupl)		Other WFNJ/EA Payments (Undupl)	
			% CHNG (1 YR)		% CHNG (1 YR)		% CHNG (1 YR)		% CHNG (1 YR)		% CHNG (1 YR)
2017	DEC	1,740	-29.2%	935	-39.6%	129	-21.8%	484	-1.4%	418	-28.8%
2017	Average	2,021		1,185		134		491		468	
2018	JAN	1,799	-24.0%	960	-35.0%	171	-6.6%	533	9.2%	432	-15.3%
	FEB	1,754	-20.7%	955	-30.6%	154	27.3%	501	0.8%	417	-11.8%
	MAR	1,785	-23.4%	968	-31.1%	158	-4.2%	510	-1.4%	457	-16.3%
	APR	1,795	-13.6%	973	-26.4%	152	12.6%	496	11.2%	443	1.8%
	MAY	1,753	-15.0%	919	-27.1%	146	10.6%	493	3.6%	441	-0.2%
	JUN	1,677	-18.5%	887	-24.7%	120	-8.4%	473	-3.5%	415	-14.6%
	JUL	1,666	-12.1%	861	-23.7%	185	46.8%	451	-5.1%	447	18.3%
	AUG	1,623	-17.9%	857	-21.3%	139	20.9%	441	-18.2%	443	-6.9%
	SEP	1,536	-18.2%	799	-23.3%	188	52.8%	360	-25.0%	419	-17.5%
	OCT	1,622	-13.1%	814	-17.7%	190	66.7%	432	-19.4%	470	-7.8%
	NOV	1,614	-9.8%	852	-16.0%	160	16.8%	456	-1.9%	417	-4.8%
	DEC	1,620	-6.9%	805	-13.9%	224	73.6%	444	-8.3%	425	1.7%
2018	Average	1,687		888		166		466		436	
2019	JAN	1,527	-15.1%	834	-13.1%	157	-8.2%	361	-32.3%	500	15.7%
	FEB	1,390	-20.8%	754	-21.0%	150	-2.6%	293	-41.5%	429	2.9%
	MAR	1,505	-15.7%	843	-12.9%	120	-24.1%	419	-17.8%	387	-15.3%
	APR	1,546	-13.9%	811	-16.6%	174	14.5%	439	-11.5%	400	-9.7%
	MAY	1,588	-9.4%	825	-10.2%	146	0.0%	458	-7.1%	446	1.1%
	JUN	1,541	-8.1%	819	-7.7%	164	36.7%	427	-9.7%	413	-0.5%
	JUL	1,511	-9.3%	761	-11.6%	133	-28.1%	448	-0.7%	405	-9.4%
	AUG	1,673	3.1%	852	-0.6%	159	14.4%	513	16.3%	443	0.0%
	SEP	1,641	6.8%	834	4.4%	183	-2.7%	433	20.3%	449	7.2%
	OCT	1,830	12.8%	864	6.1%	247	30.0%	508	17.6%	549	16.8%
	NOV	1,555	-3.7%	871	2.2%	142	-11.3%	382	-16.2%	413	-1.0%
	DEC	1,632	0.7%	855	6.2%	192	-14.3%	440	-0.9%	417	-1.9%
2019	Average	1,578		827		164		427		438	

NJ STATEWIDE Families Receiving Emergency Assistance DECEMBER 2017 THROUGH DECEMBER 2019



WFNJ/EA data is derived from NJ MMIS Shared Data Warehouse. Effective July 2013 this data query source was converted to the SDW.

* Effective Feb '11 Transitional Housing Payments were removed from 'Other EA Payments' and added to 'Shelter Payments'.

TABLE 9 :
EMERGENCY ASSISTANCE (BY COUNTY) **TOTAL NUMBER OF ELIGIBLE FAMILIES RECEIVING EMERGENCY ASSISTANCE PAYMENTS BY COUNTY (UNDUPLICATED CASES) FOR DECEMBER 2019**

County	TOTAL	%	Temp	Motel	Shelter/Transitional	Other	SSI
	WFNJ/EA Families (Undupl)	CHNG From DEC 18	Rent Asst. Payments (Undupl)	Housing Payments (Undupl)	Housing Payments (Undupl)	WFNJ/EA Payments (Undupl)	Reipients Receiving EA **
ATLANTIC	108	30.1%	89	8	0	32	94
BERGEN	64	45.5%	30	0	22	18	25
BURLINGTON	63	-27.6%	15	4	42	10	4
CAMDEN	50	-33.3% *	17	8	26	8	18
CAPE MAY	19	26.7%	9	11	0	3	14
CUMBERLAND	1	-66.7% *	0	0	1	0	0
ESSEX	253	-9.6%	76	0	165	31	19
GLOUCESTER	27	80.0% Δ	9	4	10	12	10
HUDSON	216	6.9%	157	10	40	74	51
HUNTERDON	17	240.0% Δ	7	1	7	4	1
MERCER	107	18.9%	37	31	24	38	54
MIDDLESEX	83	-35.7% *	13	28	11	43	21
MONMOUTH	36	2.9%	1	9	25	4	7
MORRIS	31	47.6% Δ	11	16	3	9	17
OCEAN	91	24.7%	58	30	0	28	20
PASSAIC	262	-2.2%	208	0	29	43	43
SALEM	4	-20.0%	0	0	3	2	1
SOMERSET	58	-7.9%	39	6	9	19	59
SUSSEX	4	-20.0%	0	2	1	3	3
UNION	109	7.9%	61	20	20	27	66
WARREN	29	38.1%	18	4	2	9	5
NJ Total	1,632	0.7%	855	192	440	417	532

Δ=higher caseload % change

*=lower caseload % change

** SSI-EA includes pay codes 22 and 24, data is derived from NJ Division of Family Development FAMIS Report #FM430-03A

WFNJ/EA data is derived from NJ MMIS Shared Data Warehouse.

Effective July 2013 this data query source was converted to the SDW.

Number WFNJ Families Receiving EA by County
DECEMBER 2019

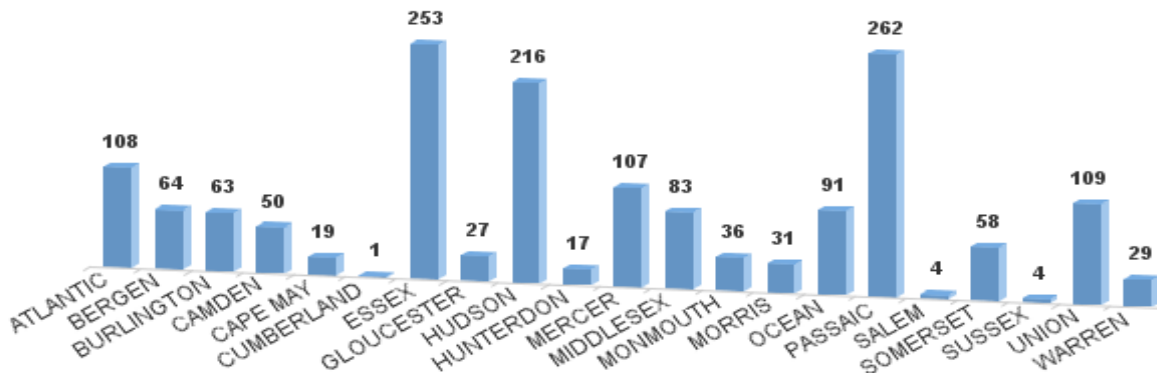
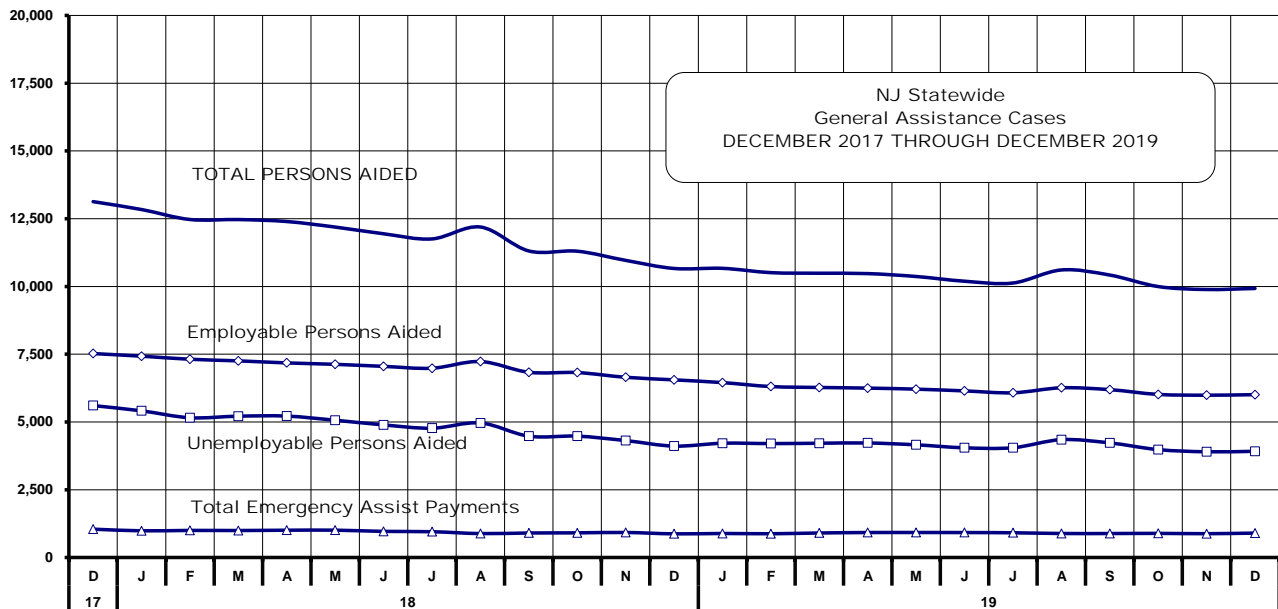


Table 10
GENERAL ASSISTANCE PROGRAM
NUMBER OF EMPLOYABLE AND UNEMPLOYABLE RECIPIENTS AND EMERGENCY ASSISTANCE PAYMENTS FOR DECEMBER 2019 - STATEWIDE
DECEMBER 2017 THROUGH DECEMBER 2019

	Total Cases				Emergency Assistance Cases					
	Employable	% Chng (1 Yr)	Unemployable	% Chng (1 Yr)	Total	% Chng (1 Yr)	Temporary Rental Assistance	Other GA-EA	Total	% Chng (1 Yr)
2017 DEC	5,606	-17.8%	7,524	-15.8%	13,130	-16.7%	1,045	1,059	2,104	-17.5%
2017 AVERAGE	5,932		8,219		14,151		1,178	1,118	2,296	
2018 JAN	5,411	-17.4%	7,428	-15.3%	12,839	-16.2%	984	1,113	2,097	-16.6%
FEB	5,157	-19.8%	7,314	-15.6%	12,471	-17.4%	999	1,069	2,068	-12.9%
MAR	5,214	-19.2%	7,255	-16.6%	12,469	-17.7%	995	1,055	2,050	-15.9%
APR	5,217	-16.8%	7,179	-15.4%	12,396	-16.0%	1,006	1,210	2,216	-8.1%
MAY	5,065	-17.0%	7,127	-15.2%	12,192	-16.0%	1,008	1,151	2,159	-10.3%
JUN	4,892	-18.9%	7,052	-15.6%	11,944	-16.9%	963	1,053	2,016	-16.2%
JUL	4,770	-15.9%	6,984	-14.6%	11,754	-15.1%	951	1,066	2,017	-7.4%
AUG	4,964	-13.7%	7,230	-11.0%	12,194	-12.1%	882	1,122	2,004	-14.2%
SEP	4,476	-18.0%	6,834	-13.5%	11,310	-15.3%	904	1,054	1,958	-8.2%
OCT	4,478	-18.0%	6,823	-13.4%	11,301	-15.3%	909	1,079	1,988	-12.2%
NOV	4,314	-19.8%	6,649	-13.0%	10,963	-15.9%	923	998	1,921	-3.5%
DEC	4,110	-26.7%	6,554	-12.9%	10,664	-18.8%	872	1,007	1,879	-10.7%
2018 AVERAGE	4,839		7,036		11,875		950	1,081	2,031	
2019 JAN	4,216	-22.1%	6,453	-13.1%	10,669	-16.9%	886	1,018	1,904	-9.2%
FEB	4,203	-18.5%	6,307	-13.8%	10,510	-15.7%	876	1,023	1,899	-8.2%
MAR	4,215	-19.2%	6,273	-13.5%	10,488	-15.9%	904	1,077	1,981	-3.4%
APR	4,225	-19.0%	6,250	-12.9%	10,475	-15.5%	921	1,244	2,165	-2.3%
MAY	4,157	-17.9%	6,211	-12.9%	10,368	-15.0%	922	1,923	2,845	31.8%
JUN	4,047	-17.3%	6,147	-12.8%	10,194	-14.7%	920	1,166	2,086	3.5%
JUL	4,050	-15.1%	6,077	-13.0%	10,127	-13.8%	912	1,082	1,994	-1.1%
AUG	4,348	-12.4%	6,261	-13.4%	10,609	-13.0%	885	1,210	2,095	4.5%
SEP	4,228	-5.5%	6,193	-9.4%	10,421	-7.9%	884	1,275	2,159	10.3%
OCT	3,980	-11.1%	6,017	-11.8%	9,997	-11.5%	890	1,319	2,209	11.1%
NOV	3,900	-9.6%	5,988	-9.9%	9,888	-9.8%	878	1,198	2,076	8.1%
DEC	3,918	-4.7%	6,008	-8.3%	9,926	-6.9%	900	1,139	2,039	8.5%
2019 AVERAGE	4,124		6,182		10,306		898	1,223	2,121	



Source: NJ Division of Family Development, GA Fiscal Unit

TABLE 11
GENERAL
ASSISTANCE
PROGRAM

**EMPLOYABLE AND UNEMPLOYABLE CASES
AND EMERGENCY ASSISTANCE CASES RECEIVING PAYMENTS BY COUNTY**

DECEMBER 2019

County	Total Cases				Emergency Assistance Cases					
	Employable	% Chng (From Dec 18)	Unemployable	% Chng (From Dec 18)	Total	% Chng (From Dec 18)	Temporary Rental Assist.	Other GA-EA	Total	% Chng (From Dec 18)
ATLANTIC	379	-11.4%	274	-12.5%	653	-11.9%	80	31	111	-9.0%
BERGEN	180	-15.1%	364	-26.8%	544	-23.3% *	107	38	145	-1.4%
BURLINGTON	140	-30.3%	348	-13.9%	488	-19.3% *	31	34	65	-38.7% *
CAMDEN	388	-9.1%	642	-8.8%	1,030	-8.9%	52	85	137	2.2%
CAPE MAY	82	39.0%	65	-19.8%	147	5.0%	18	66	84	40.0%
CUMBERLAND	173	-6.0%	198	-13.5%	371	-10.2%	0	9	9	-18.2% *
ESSEX	722	-1.8%	566	20.2%	1,288	6.8%	36	159	195	-12.2%
GLOUCESTER	125	14.7%	202	-14.8%	327	-5.5%	11	30	41	-14.6%
HUDSON	356	-7.5%	683	-20.5%	1,039	-16.5% *	71	66	137	26.9%
HUNTERDON	77	42.6%	87	70.6%	164	56.2% Δ	11	33	44	51.7%
MERCER	158	-8.7%	410	-10.9%	568	-10.3%	41	48	89	6.0%
MIDDLESEX	155	-19.3%	371	-5.1%	526	-9.8%	89	82	171	-18.6% *
MONMOUTH	78	-6.0%	203	13.4%	281	7.3%	0	22	22	144.4% Δ
MORRIS	103	-10.4%	185	-13.6%	288	-12.5%	72	32	104	-2.8%
OCEAN	207	24.0%	288	0.0%	495	8.8%	69	147	216	49.0%
PASSAIC	133	-7.0%	528	-11.6%	661	-10.7%	87	37	124	25.3%
SALEM	21	-38.2%	67	4.7%	88	-10.2%	4	5	9	80.0% Δ
SOMERSET	87	38.1%	85	23.2%	172	30.3% Δ	26	39	65	80.6% Δ
SUSSEX	47	20.5%	43	30.3%	90	25.0% Δ	0	24	24	71.4%
UNION	215	0.9%	278	-8.9%	493	-4.8%	70	111	181	33.1%
WARREN	92	-2.1%	121	12.0%	213	5.4%	25	41	66	40.4%
NJ TOTAL	3,918	-4.7%	6,008	-8.3%	9,926	-6.9%	900	1,139	2,039	8.5%

Δ = ↑ Caseload %

* = ↓ Caseload %

Source: NJ Division of Family Development, GA Fiscal Unit

TABLE 12
OFFICE OF CHILD
SUPPORT
SERVICES

OFFICE OF CHILD SUPPORT SERVICES

Quarterly Performance Report

State Summary

TITLE IV-D SOURCE COLLECTION REPORT

Comparison of Quarter-1 (FFY 19 vs. FFY 20)

COLLECTION SOURCE	TOTAL 10/1/2018 - 12/31/2018	% OF TOTAL COLLECTIONS	TOTAL 10/1/2019 - 12/31/2019	% OF TOTAL COLLECTIONS	DOLLAR CHANGE	% CHANGE
FEDERAL TAX	\$ 1,094,671	0.36%	\$ 1,026,851	0.34%	\$ (67,820)	-6.20%
STATE TAX	\$ 302,196	0.10%	\$ 312,172	0.10%	\$ 9,976	3.30%
UIB	\$ 6,589,240	2.14%	\$ 6,599,763	2.17%	\$ 10,523	0.16%
INC WITHHOLD	\$ 219,738,341	71.35%	\$ 216,119,097	71.01%	\$ (3,619,244)	-1.65%
FROM OTHER STATES	\$ 12,411,464	4.03%	\$ 12,035,868	3.95%	\$ (375,596)	-3.03%
ADMIN ENFORCEMENT	\$ 3,565,599	1.16%	\$ 4,979,597	1.64%	\$ 1,413,998	39.66%
OTHER	\$ 64,250,085	20.86%	\$ 63,282,676	20.79%	\$ (967,409)	-1.51%
TOTAL COLLECTIONS*	\$ 307,951,596	100%	\$ 304,356,024	100%	\$ (3,595,572)	-1.17%
DISBURSED COLLECTIONS**	\$ 271,047,132		\$ 266,632,950		\$ (4,414,182)	-1.63%

* Includes collections on both current support and arrears.

** Includes collections on both current support and arrears; also includes money sent to other states.

SOURCE: NJKiDS (Based on Federal Quarterly Report of Collections - OCSE-34A except Disbursed Collections)
Disbursed Collections obtained from Federal Data Report - OCSE-157, which is reported annually to Congress and used in the calculation of incentive dollars earned by each state.

TABLE 13

OFFICE OF CHILD
SUPPORT SERVICES**OFFICE OF CHILD SUPPORT SERVICES**

State Summary

TITLE IV-D PATERNITY ESTABLISHMENT REPORT

Comparison of December (FFY 19 vs. FFY 20)

County Office	DECEMBER 2018			DECEMBER 2019			Increase or Decrease (-) from FFY 2019 to FFY 2020
	Total Children Born Out of Wedlock*	Number of Paternities Established	Percent of Paternities Established	Total Children Born Out of Wedlock*	Number of Paternities Established	Percent of Paternities Established	
Atlantic	7,078	6,967	98.4%	6,580	6,524	99.1%	0.7%
Bergen	3,444	3,388	98.4%	3,275	3,202	97.8%	-0.6%
Burlington	5,740	5,540	96.5%	5,191	5,036	97.0%	0.5%
Camden	17,280	16,744	96.9%	16,127	15,624	96.9%	0.0%
Cape May	1,401	1,381	98.6%	1,312	1,292	98.5%	-0.1%
Cumberland	7,121	7,035	98.8%	6,749	6,665	98.8%	0.0%
Essex	28,522	26,686	93.6%	26,248	24,699	94.1%	0.5%
Gloucester	4,962	4,874	98.2%	4,618	4,537	98.2%	0.0%
Hudson	11,644	10,924	93.8%	10,511	10,043	95.5%	1.7%
Hunterdon	317	311	98.1%	287	284	99.0%	0.8%
Mercer	8,072	7,779	96.4%	7,520	7,237	96.2%	-0.1%
Middlesex	7,172	6,956	97.0%	6,677	6,492	97.2%	0.2%
Monmouth	6,081	5,835	96.0%	5,617	5,405	96.2%	0.3%
Morris	1,434	1,409	98.3%	1,339	1,320	98.6%	0.3%
Ocean	5,284	5,137	97.2%	4,989	4,852	97.3%	0.0%
Passaic	12,364	11,696	94.6%	10,958	10,459	95.4%	0.8%
Salem	2,854	2,758	96.6%	2,762	2,667	96.6%	-0.1%
Somerset	1,681	1,618	96.3%	1,516	1,469	96.9%	0.6%
Sussex	627	618	98.6%	565	562	99.5%	0.9%
Union	11,033	10,485	95.0%	10,425	9,953	95.5%	0.4%
Warren	1,039	1,023	98.5%	972	970	99.8%	1.3%
NJ TOTALS	145,150	139,164	95.9%	134,238	129,292	96.3%	0.4%

SOURCE: NJKiDS (Based on Federal Performance Measures - OCSE-157)

* Information on Out of Wedlock Births obtained from NJ Bureau of Vital Statistics

TABLE 14

OFFICE OF CHILD
SUPPORT SERVICES**OFFICE OF CHILD SUPPORT SERVICES**

State Summary

TITLE IV-D REPORT OF CASES WITH ORDERS

Comparison of December (FFY 19 vs. FFY 20)

County Office	DECEMBER 2018			DECEMBER 2019			Increase or Decrease (-) from FFY 2019 to FFY 2020
	TOTAL CASES	CASES WITH ORDERS	% OF CASES WITH ORDERS	TOTAL CASES	CASES WITH ORDERS	% OF CASES WITH ORDERS	
Atlantic	12,660	11,201	88.5%	11,937	10,807	90.5%	2.1%
Bergen	12,092	11,697	96.7%	11,822	11,391	96.4%	-0.4%
Burlington	14,467	12,656	87.5%	13,363	12,202	91.3%	3.8%
Camden	29,738	26,663	89.7%	28,401	26,328	92.7%	3.0%
Cape May	3,232	2,928	90.6%	3,106	2,846	91.6%	1.0%
Cumberland	12,304	11,706	95.1%	11,920	11,354	95.3%	0.1%
Essex	45,425	36,608	80.6%	42,907	35,477	82.7%	2.1%
Gloucester	10,902	10,365	95.1%	10,583	10,083	95.3%	0.2%
Hudson	22,618	18,320	81.0%	20,834	17,790	85.4%	4.4%
Hunterdon	1,479	1,421	96.1%	1,450	1,366	94.2%	-1.9%
Mercer	14,675	13,017	88.7%	14,066	12,600	89.6%	0.9%
Middlesex	17,952	16,764	93.4%	17,349	16,272	93.8%	0.4%
Monmouth	14,970	14,160	94.6%	14,246	13,577	95.3%	0.7%
Morris	6,051	5,890	97.3%	5,883	5,717	97.2%	-0.2%
Ocean	15,229	14,525	95.4%	14,718	14,026	95.3%	-0.1%
Passaic	23,218	17,525	75.5%	21,141	16,872	79.8%	4.3%
Salem	4,445	4,256	95.7%	4,273	4,093	95.8%	0.0%
Somerset	5,005	4,690	93.7%	4,683	4,395	93.9%	0.1%
Sussex	2,785	2,692	96.7%	2,638	2,568	97.3%	0.7%
Union	18,817	17,623	93.7%	18,108	17,052	94.2%	0.5%
Warren	3,077	2,833	92.1%	3,008	2,801	93.1%	1.0%
NJ TOTALS	291,141	257,540	88.5%	276,436	249,617	90.3%	1.8%

SOURCE: NJKiDS (Based on Federal Performance Measures - OCSE-157)

TABLE 15

OFFICE OF CHILD
SUPPORT SERVICES

OFFICE OF CHILD SUPPORT SERVICES

State Summary

TITLE IV-D COLLECTIONS ON CURRENT SUPPORT

Comparison of December (FFY 19 vs. FFY 20)

County Office	DECEMBER 2018			DECEMBER 2019			Increase or Decrease (-) from FFY 2019 to FFY 2020
	Total Current Support Due	Total Current Support Distributed	Total Collection Rate	Total Current Support Due	Total Current Support Distributed	Total Collection Rate	
Atlantic	\$3,601,288	\$2,444,245	67.9%	\$3,725,438	\$2,554,387	68.6%	0.7%
Bergen	\$8,377,295	\$6,495,682	77.5%	\$8,518,601	\$6,538,015	76.7%	-0.8%
Burlington	\$5,724,938	\$4,119,514	72.0%	\$5,760,478	\$4,076,933	70.8%	-1.2%
Camden	\$7,669,374	\$4,750,323	61.9%	\$7,794,398	\$4,856,749	62.3%	0.4%
Cape May	\$1,059,528	\$765,468	72.2%	\$1,068,052	\$757,536	70.9%	-1.3%
Cumberland	\$2,945,863	\$1,806,160	61.3%	\$3,030,349	\$1,866,043	61.6%	0.3%
Essex	\$10,487,679	\$6,499,408	62.0%	\$10,643,051	\$6,527,772	61.3%	-0.6%
Gloucester	\$4,086,225	\$2,813,125	68.8%	\$4,126,571	\$2,860,458	69.3%	0.5%
Hudson	\$6,882,854	\$4,834,643	70.2%	\$7,135,569	\$4,978,679	69.8%	-0.5%
Hunterdon	\$1,254,400	\$1,023,622	81.6%	\$1,233,207	\$989,286	80.2%	-1.4%
Mercer	\$4,055,732	\$2,589,982	63.9%	\$4,114,877	\$2,661,940	64.7%	0.8%
Middlesex	\$7,653,123	\$5,430,542	71.0%	\$7,711,918	\$5,477,258	71.0%	0.1%
Monmouth	\$7,340,808	\$5,435,823	74.0%	\$7,296,323	\$5,479,496	75.1%	1.1%
Morris	\$4,544,745	\$3,427,421	75.4%	\$4,429,730	\$3,404,186	76.8%	1.4%
Ocean	\$6,516,056	\$4,838,039	74.2%	\$6,520,520	\$4,847,119	74.3%	0.1%
Passaic	\$6,319,741	\$4,193,393	66.4%	\$6,390,465	\$4,227,115	66.1%	-0.2%
Salem	\$1,081,240	\$682,316	63.1%	\$1,109,602	\$678,878	61.2%	-1.9%
Somerset	\$3,065,161	\$2,545,387	83.0%	\$3,000,512	\$2,481,901	82.7%	-0.3%
Sussex	\$1,784,353	\$1,444,871	81.0%	\$1,761,170	\$1,416,690	80.4%	-0.5%
Union	\$6,617,178	\$4,707,867	71.1%	\$6,769,787	\$4,776,113	70.6%	-0.6%
Warren	\$1,326,907	\$1,001,665	75.5%	\$1,319,046	\$976,733	74.0%	-1.4%
NJ TOTALS	\$102,394,487	\$71,849,495	70.2%	\$103,459,664	\$72,433,287	70.0%	-0.2%

SOURCE: NJKiDS (Based on Federal Performance Measures - OCSE-157)

TABLE 16

OFFICE OF CHILD
SUPPORT SERVICES**OFFICE OF CHILD SUPPORT SERVICES**

State Summary

TITLE IV-D CASES ARREARS COLLECTION REPORT

Comparison of December (FFY 19 vs. FFY 20)

County Office	DECEMBER 2018			DECEMBER 2019			Increase or Decrease (-) from FFY 2019 to FFY 2020
	Total Cases with Arrears	Total Amount Collected	Average Arrears Collection per Case	Total Cases with Arrears	Total Amount Collected	Average Arrears Collection per Case	
Atlantic	7,539	\$567,000	\$75.21	7,275	\$605,022	\$83.16	\$7.96
Bergen	7,573	\$1,007,684	\$133.06	7,467	\$1,067,233	\$142.93	\$9.86
Burlington	8,479	\$913,446	\$107.73	8,114	\$886,333	\$109.24	\$1.50
Camden	17,286	\$1,287,083	\$74.46	16,581	\$1,547,787	\$93.35	\$18.89
Cape May	2,062	\$181,589	\$88.06	2,009	\$245,850	\$122.37	\$34.31
Cumberland	7,821	\$523,337	\$66.91	7,474	\$521,378	\$69.76	\$2.84
Essex	23,289	\$2,060,462	\$88.47	22,538	\$2,231,668	\$99.02	\$10.54
Gloucester	7,078	\$599,267	\$84.67	6,790	\$730,861	\$107.64	\$22.97
Hudson	12,843	\$1,119,106	\$87.14	12,473	\$1,281,478	\$102.74	\$15.60
Hunterdon	902	\$205,911	\$228.28	841	\$134,440	\$159.86	-\$68.43
Mercer	8,671	\$760,088	\$87.66	8,451	\$782,244	\$92.56	\$4.90
Middlesex	11,309	\$1,128,199	\$99.76	10,927	\$1,215,145	\$111.21	\$11.44
Monmouth	9,101	\$1,049,089	\$115.27	8,673	\$1,114,995	\$128.56	\$13.29
Morris	4,046	\$647,930	\$160.14	3,884	\$576,730	\$148.49	-\$11.65
Ocean	9,577	\$1,134,976	\$118.51	9,165	\$998,025	\$108.90	-\$9.62
Passaic	11,916	\$1,046,259	\$87.80	11,489	\$1,111,053	\$96.71	\$8.90
Salem	2,663	\$204,900	\$76.94	2,529	\$179,336	\$70.91	-\$6.03
Somerset	3,153	\$457,386	\$145.06	2,984	\$546,351	\$183.09	\$38.03
Sussex	1,848	\$216,660	\$117.24	1,720	\$231,960	\$134.86	\$17.62
Union	11,778	\$1,219,613	\$103.55	11,410	\$1,253,181	\$109.83	\$6.28
Warren	1,843	\$226,040	\$122.65	1,763	\$198,358	\$112.51	-\$10.14
NJ TOTALS	170,777	\$16,556,025	\$96.95	164,557	\$17,459,428	\$106.10	\$9.15

SOURCE:OCSE-157 Child Support Enforcement Annual Data Report

Table 17

WORK FIRST NEW JERSEY STATISTICAL SUMMARY

WFNJ

DECEMBER 2019

COUNTY	EMPLOYMENT DIRECTED ACTIVITIES			EMPLOYED OPEN (WFNJ RECIPIENT)	SUPPORT SERVICES ON ACTIVE CASE		CLOSED FOR EMPLOYMENT THIS MONTH	POST ASSISTANCE CHILD CARE
	CWEP	ALL OTHER TRAINING	JOB SEARCH		CHILD CARE	TRAINING REL. EXPENSES		
ATLANTIC	52	76	27	52	24	148	11	58
BERGEN	62	4	41	14	63	41	1	3
BURLINGTON	111	12	41	61	54	68	10	73
CAMDEN	136	148	7	147	188	156	8	79
CAPE MAY	5	17	7	9	7	7	0	3
CUMBERLAND	48	77	9	23	41	73	8	21
ESSEX	244	275	35	242	359	337	37	252
GLOUCESTER	18	18	10	28	20	18	5	35
HUDSON	102	210	27	123	331	263	18	88
HUNTERDON	0	0	2	2	2	0	0	1
MERCER	111	115	71	98	128	99	5	75
MIDDLESEX	24	15	90	58	53	52	12	72
MONMOUTH	19	12	14	33	30	22	3	48
MORRIS	7	4	9	13	11	5	4	4
OCEAN	4	88	0	14	22	32	3	33
PASSAIC	168	118	6	68	185	145	7	30
SALEM	10	7	18	13	10	8	1	3
SOMERSET	35	16	5	38	47	26	4	22
SUSSEX	7	0	0	2	0	0	1	2
UNION	122	38	4	49	72	76	4	28
WARREN	4	10	24	17	9	1	1	16
STATE	1,289	1,260	447	1,104	1,656	1,577	143	946

Data is derived from NJ Division of Family Development's FAMIS Reports RM064-01 & RM703-51, AdHoc Reports 5549 & 5598 and SDW Report WR00022WZ_CC

**DIVISION OF FAMILY DEVELOPMENT CURRENT PROGRAM STATISTICS
DECEMBER 2019**

ACRONYMS

EMERGENCY ASSISTANCE (EA) - Payments to those eligible for WFNJ/TANF or WFNJ/GA, authorized during the 30 consecutive days immediately following the emergency (defined as a substantial loss of shelter, food, clothing, or household furnishings by fire, flood or other similar disaster) or if eligible individual or family is in an imminent or actual state of homelessness.

NJ SNAP - Formerly the Food Stamp Program, now known as **NJ SNAP** (NJ Supplemental Nutrition Assistance Program) authorized by Congress as a nutritional supplement program to provide low income households with more food of greater variety and better nutrition. Program eligibility is based on household income, resources, and expenses for medical, shelter, and dependent care. CWA staff refers certain recipients to the New Jersey Department of Labor for participation in the Food Stamp Employment and Training Program.

FAMIS: Family Assistance Management Information System

GAAS: General Assistance Automated System

NJKiDS: New Jersey Kids Deserve Support (Child Support Information Management System)

NJ MMIS SHARED DATA WAREHOUSE: The Shared Data Warehouse (SDW) is the repository for New Jersey's DFD and Medicaid data. Since 2003, OptumInsight has administered the SDW and provided access to the data through a reporting tool known as Business Objects.

OMEGA: Online Management of Economic Goal Achievement

SSI-EA: Supplemental Security Income-Emergency Assistance

WFNJ: Work First New Jersey - Fully implemented July 1, 1997, this is New Jersey's welfare reform program which responds to the requirements of the Federal Personal Responsibility and Work Opportunity Reconciliation Act (**PRWORA**) of 1996. PRWORA established Temporary Assistance for Needy Families (**TANF**) as the replacement for AFDC cash assistance. WFNJ includes two segments, **WFNJ/TANF** for families with children, and **WFNJ/GA** (General Assistance) for single adults and couples without dependent children. WFNJ emphasizes achieving self-sufficiency and limits lifetime receipt of financial assistance to a total of five years.

**DIVISION OF FAMILY DEVELOPMENT CURRENT PROGRAM STATISTICS
DECEMBER 2019**

EXPLANATORY NOTES

The Department of Human Services Division of Family Development provides basic income and an opportunity to achieve self-sufficiency for individuals and families served by the Division's programs. The Division provides leadership, direction and supervision to those public agencies responsible for administering those programs and plans for and develops policies to promote self-sufficiency.

WFNJ Statistical Summary (Table 17)

Employment Directed Activities (EDA) - From Activities Summary Report (OMEGA report # RM064). Unduplicated count of persons participating in Community Work Experience Program (CWEP), All Other Training, or Job Search.

Number of Persons Employed This Month, Still Receiving TANF Individuals with open "empl" activity on OMEGA. Ad hoc report.

Participants Receiving Child Care Services - From Issuance Disbursement Summary (OMEGA report # RM703). Total number of active participants who show receipt of **Child Care**.

Number of Persons Closed on FAMIS Due to Employment - From FAMIS report #5549-RM-2.

Post TANF and Receiving Child Care - Persons no longer in receipt of TANF but still receiving child care. From Share Data Warehouse Child Care case count based on Child Care payments (SDW report WR00022WZ_CC).