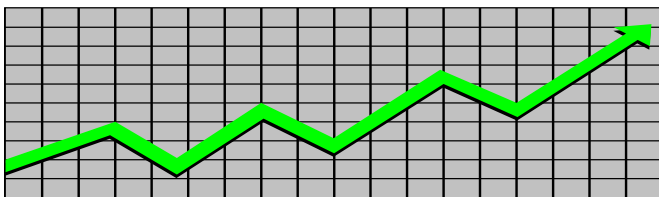


State of New Jersey
Department of Human Services
Division of Family Development

CURRENT PROGRAM STATISTICS



January 2018
Natasha Johnson, Director

**DIVISION OF FAMILY DEVELOPMENT CURRENT PROGRAM STATISTICS
JANUARY 2018**

TABLE OF CONTENTS

HIGHLIGHTS:

WFNJ/TANF	ii
NJ SNAP	ii
EMERGENCY ASSISTANCE	ii
GENERAL ASSISTANCE	iii
GA Emergency Assistance.....	iii
GA Program.....	iii
CHILD SUPPORT SERVICES	iii
WORK FIRST NEW JERSEY (WFNJ)	iii
STATISTICS- BY STATE & COUNTY	1
Table 1: WFNJ/TANF Families & Persons (NJ Statewide) January 2016 to 2018.....	1
Table 2: WFNJ/TANF Families (by County)- January 2018.....	2
Table 2B: WFNJ/TANF Persons, Adults, & Children (by County)- January 2018.....	3
Table 3: TANF Work Participation Rates Over 12 Month Period (by County)- January 2018.....	4
Table 4: TANF Work Participation Rates Over 12 Month Period (NJ Statewide) January 2018.....	5
Table 5: NJ SNAP Households/Persons (NJ Statewide) January 2016 to 2018.....	6
Table 6: NJ SNAP Recipient Trends (NJ Statewide) January 2016 to 2018.....	7
Table 7: NJ SNAP Households/Persons (by County)- January 2018.....	8
Table 8: Emergency Assistance Program (NJ Statewide) January 2016 to 2018.....	9
Table 9: Emergency Assistance Program (by County)- January 2018.....	10
Table 10: General Assistance Program (NJ Statewide) January 2016 to 2018.....	11
Table 11: General Assistance Program (by County)- January 2018.....	12
Table 12: Child Support Services Distributions (NJ Statewide) FFY 2018.....	13
Table 13: Child Support Services Paternities Established- January 2018.....	14
Table 14: Child Support Services Cases With Orders- January 2018.....	15
Table 15: Child Support Services Collections On Current Support- January 2018.....	16
Table 16: Child Support Services Cases With Payments On Arrears- January 2018.....	17
Table 17: WFNJ Statistical Summary- January 2018.....	18
ACRONYMS	19
EXPLANATORY NOTES	20
WFNJ Statistical Summary (Table 17).....	20

DIVISION OF FAMILY DEVELOPMENT CURRENT PROGRAM STATISTICS
JANUARY 2018

Each month the Division of Family Development publishes its program statistics for: WFNJ/TANF, NJ SNAP, Emergency Assistance, General Assistance, and Child Support Services. When possible, information is provided separately for children and adults. Many tables also provide trend data with information broken down by county for readers to consider. This report is compiled and prepared by The Bureau of Research & Reporting.

WFNJ/TANF

- As of the end of January, the TANF caseload had decreased by 3,523 cases, from 18,620 in January 2017 to 15,097 in January 2018, a decrease of 18.9%.
- The counties with caseloads that decreased the most since January 2017 were Cape May (-27.3%), Union (-29.4%) and Bergen (-35.2%).
- Of the WFNJ/TANF cases, 4,770 or 31.6% were child-only in January 2018.
- The counties with the most child-only cases were Essex (719), Camden (712) and Hudson (498).
- Essex (6,928), Camden (4,993), Passaic (4,568), Hudson (4,414) and Atlantic (2,931) counties had the greatest number of persons receiving TANF in January 2018.

NJ SNAP (formerly FOOD STAMPS)

- In January 2018, there were 380,666 households receiving NJ SNAP benefits. The number of NJ SNAP households decreased by 28,336 or 6.9%, since January 2017.
- There were 758,528 persons receiving NJ SNAP benefits as of January 2018, a decrease of 57,598 or 7.1% since January 2017.
- The county that showed a percent increase for NJ SNAP benefits as of January 2018, was Warren (1.5%).
- The counties having the highest caseload decrease since January 2017 are Bergen (-10.1%), Burlington (-10.1%) and Ocean (-12.4%).

EMERGENCY ASSISTANCE

- There were 1,799 families receiving Emergency Assistance (EA) in January 2018, a decrease of 568 or 24.0% since January 2017.
- In January 2018, EA payments were made for 434 SSI recipients.

**DIVISION OF FAMILY DEVELOPMENT CURRENT PROGRAM STATISTICS
JANUARY 2018**

GENERAL ASSISTANCE

GA Emergency Assistance

- There were 2,097 Emergency Assistance payments made to GA cases in January 2018, a decrease of 416 or 16.6% since January 2017.
- The counties that showed the highest percent increase in emergency assistance payments were Hunterdon (17.9%), Warren (30.0%) and Sussex (106.7%).
- The counties that showed the highest percent decrease in emergency assistance payments were Passaic (-39.1%), Essex (-43.4%) and Cumberland (-53.8%).

GA Program

- The total numbers of cases receiving GA has decreased from 15,324 to 12,839 since January 2017, a decrease of 16.2%.
- There were 5,411 Employable GA and 7,428 Unemployable GA cases in January 2018.
- The counties that showed a percent increase for GA cases were Monmouth (7.8%), Cape May (15.3%) and Hunterdon (21.0%) since January 2017.
- The counties that showed the highest percent decrease for GA cases since January 2017 were Passaic (-27.2%), Union (-28.2%) and Gloucester (-31.3%).
- In January 2018, GA cases showed a 2.2 percent decrease since December 2017.

CHILD SUPPORT SERVICES (Quarterly Report)

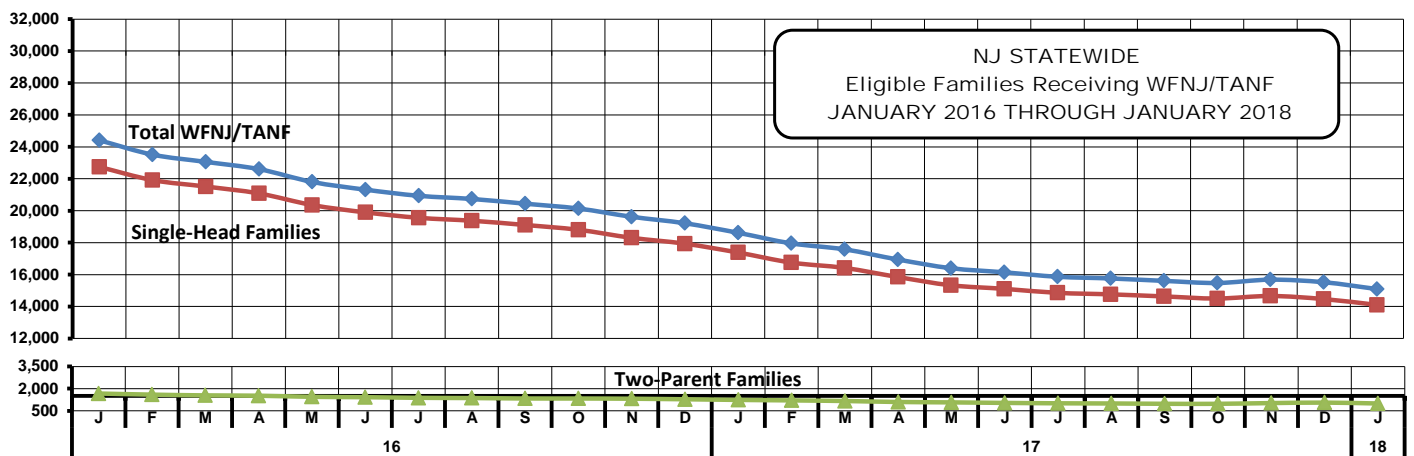
- The total collection for the Child Support Services Program was about \$300 million from October 2017 to December 2017, a decrease of 4.0 percent over the same period for FFY 2017.
- Total distributions decreased 6.9% from December 2016.

WORK FIRST NEW JERSEY (WFNJ)

- During the report month of January 2018, there were 1,457 families in which at least one member was employed and an additional 268 families whose WFNJ assistance cases were closed due to employment - related earnings.
- The three counties with the greatest number of employed active WFNJ recipients were: Essex (338), Camden (220) and Hudson (157).
- There were 2,096 former TANF cases receiving post-TANF support in the form of child care assistance.

TABLE 1: WFNJ/TANF PROGRAM
STATEWIDE NUMBER OF APPLICATIONS AND TERMINATIONS DURING JANUARY 2018
NUMBER OF ELIGIBLE FAMILIES & PERSONS RECEIVING WFNJ/TANF FOR JANUARY 2018

		JANUARY 2016 THROUGH JANUARY 2018										
		Cases Added	Cases Closed	Child-Only Cases ‡	Total Singl-Head Families	2- Parent Families	Total WFNJ/TANF Families	%CHNG (1 Yr.)	Total Persons	%CHNG (1 Yr.)	Adults	Children
2016	JAN	1,774	2,617	6,569	22,745	1,669	24,414	(23.2)	61,590	(24.8)	19,514	42,076
	FEB	1,663	2,558	6,479	21,919	1,594	23,513	(24.3)	58,994	(26.1)	18,628	40,366
	MAR	1,922	2,516	6,469	21,516	1,543	23,059	(23.9)	57,608	(26.1)	18,133	39,475
	APR	1,788	2,363	6,357	21,085	1,520	22,605	(23.4)	56,458	(25.5)	17,768	38,690
	MAY	1,763	2,568	6,216	20,357	1,446	21,803	(24.5)	54,214	(26.7)	17,033	37,181
	JUN	1,839	2,417	6,094	19,898	1,421	21,319	(24.4)	52,864	(26.8)	16,646	36,218
	JUL	1,938	2,445	5,987	19,558	1,378	20,936	(24.7)	51,942	(26.8)	16,327	35,615
	AUG	1,924	2,146	5,931	19,374	1,363	20,737	(23.7)	51,450	(25.6)	16,169	35,281
	SEP	1,943	2,360	5,912	19,108	1,333	20,441	(23.7)	50,626	(25.8)	15,862	34,764
	OCT	1,701	2,090	5,858	18,807	1,331	20,138	(24.0)	49,962	(25.7)	15,611	34,351
	NOV	1,614	2,222	5,766	18,305	1,317	19,622	(23.7)	48,737	(25.3)	15,173	33,564
	DEC	1,592	2,088	5,762	17,937	1,280	19,217	(23.7)	47,656	(25.2)	14,735	32,921
	2016 Average	1,788	2,366	6,117	20,051	1,433	21,484		53,508		16,800	36,709
2017	JAN	1,479	2,069	5,658	17,384	1,236	18,620	(23.7)	46,466	(24.6)	14,198	32,268
	FEB	1,436	2,167	5,591	16,753	1,203	17,956	(23.6)	44,778	(24.1)	13,568	31,210
	MAR	1,440	1,861	5,516	16,420	1,162	17,582	(23.8)	43,992	(23.6)	13,228	30,764
	APR	1,328	2,018	5,416	15,850	1,096	16,946	(25.0)	42,479	(24.8)	12,626	29,853
	MAY	1,295	1,835	5,222	15,332	1,069	16,401	(24.8)	41,214	(24.0)	12,248	28,966
	JUN	1,440	1,750	5,115	15,110	1,034	16,144	(24.3)	40,521	(23.3)	12,063	28,458
	JUL	1,431	1,780	5,042	14,859	1,007	15,866	(24.2)	39,840	(23.3)	11,831	28,009
	AUG	1,446	1,617	5,001	14,764	995	15,759	(24.0)	39,673	(22.9)	11,753	27,920
	SEP	1,525	1,747	4,963	14,635	974	15,609	(23.6)	39,270	(22.4)	11,620	27,650
	OCT	1,534	1,704	4,876	14,504	972	15,476	(23.2)	38,907	(22.1)	11,572	27,335
	NOV	1,539	1,581	4,885	14,662	1,022	15,684	(20.1)	39,534	(18.9)	11,821	27,713
	DEC	1,434	1,686	4,850	14,470	1,054	15,524	(19.2)	39,246	(17.6)	11,728	27,518
	2017 Average	1,444	1,818	5,178	15,395	1,069	16,464		41,327		12,355	28,972
2018	JAN	1,289	1,706	4,770	14,103	994	15,097	(18.9)	38,222	(17.7)	11,321	26,901



Data is derived from NJ MMIS Shared Data Warehouse Issuance files.
 Effective July 2013 this data query source was converted to the SDW

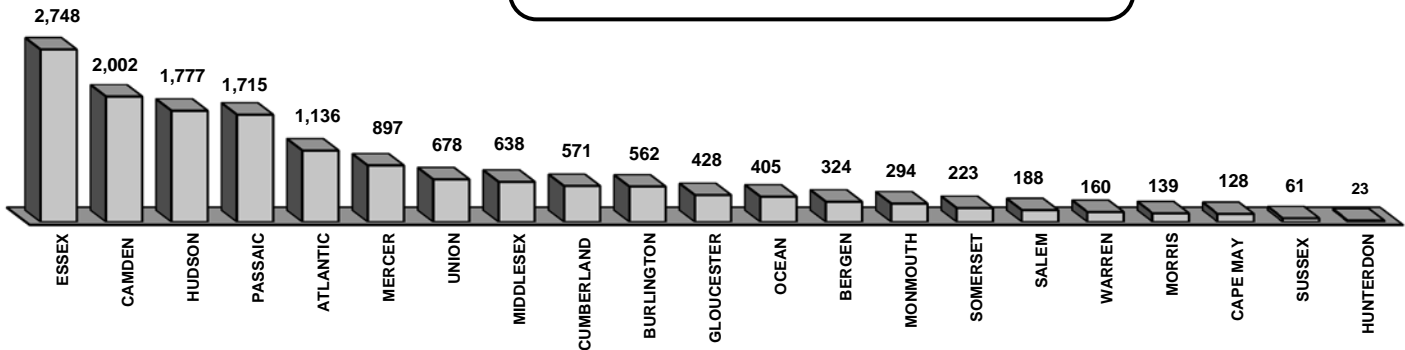
‡ Child-only cases are defined as families in which no eligible adult receives TANF program benefits, yet the family continues to be headed by at least one of the biological parents, or grandparents, or other appropriate adult.

Table 2
WFNJ/TANF
PROGRAM

NUMBER OF APPLICATIONS AND TERMINATIONS BY COUNTY DURING JANUARY 2018
NUMBER OF ELIGIBLE FAMILIES RECEIVING WFNJ/TANF REPORTED FOR JANUARY 2018

County	Cases Added	Cases Closed**	Child-		Total		WFNJ/TANF Families	% Chng (3 Mon)	% Chng (1 Yr)
			Only Cases ‡	1-Adult Cases	Singl-Head Families	2-Parent Families			
ATLANTIC	76	76	365	668	1,033	103	1,136	2.3	(15.0)
BERGEN	23	51	87	211	298	26	324	(8.7)	(35.2) *
BURLINGTON	66	80	166	358	524	38	562	(2.1)	(21.6)
CAMDEN	137	241	712	1,188	1,900	102	2,002	(6.1)	(14.4)
CAPE MAY	10	12	44	79	123	5	128	3.2	(27.3) *
CUMBERLAND	76	61	236	278	514	57	571	3.8	(16.6)
ESSEX	297	298	719	1,883	2,602	146	2,748	(3.6)	(19.2)
GLOUCESTER	36	47	161	242	403	25	428	(7.6)	(21.8)
HUDSON	160	204	498	1,153	1,651	126	1,777	(2.9)	(19.3)
HUNTERDON	3	2	9	13	22	1	23	0.0	(14.8)
MERCER	69	78	324	520	844	53	897	(1.0)	(13.4)
MIDDLESEX	65	96	279	321	600	38	638	(4.5)	(15.2)
MONMOUTH	27	23	118	168	286	8	294	2.4	(3.9) Δ
MORRIS	9	22	36	80	116	23	139	(2.1)	(18.2)
OCEAN	36	51	124	253	377	28	405	(5.2)	(20.4)
PASSAIC	100	190	487	1,142	1,629	86	1,715	(8.8)	(25.6)
SALEM	22	24	73	102	175	13	188	(0.5)	(1.6) Δ
SOMERSET	16	31	72	136	208	15	223	(6.3)	0.0 Δ
SUSSEX	5	8	20	35	55	6	61	(3.2)	(14.1)
UNION	39	87	201	393	594	84	678	(5.0)	(29.4) *
WARREN	17	24	39	110	149	11	160	2.6	(5.9)
NJ TOTAL	1,289	1,706	4,770	9,333	14,103	994	15,097	(3.7)	(18.9)

Total WFNJ/TANF Families
JANUARY 2018
By County



Data is derived from NJ MMIS Shared Data Warehouse Issuance files.

Effective July 2013 this data query source was converted to the SDW

‡ Child-only cases are defined as families in which no eligible adult receives TANF program benefits, yet the family continues to be headed by at least one of the biological parents, or grandparents, or other appropriate adult

** "Cases closed" include cases that received a benefit in the prior month, but did not receive any TANF benefit for the report month.

"Δ=higher caseload % change

"*=lower caseload % change

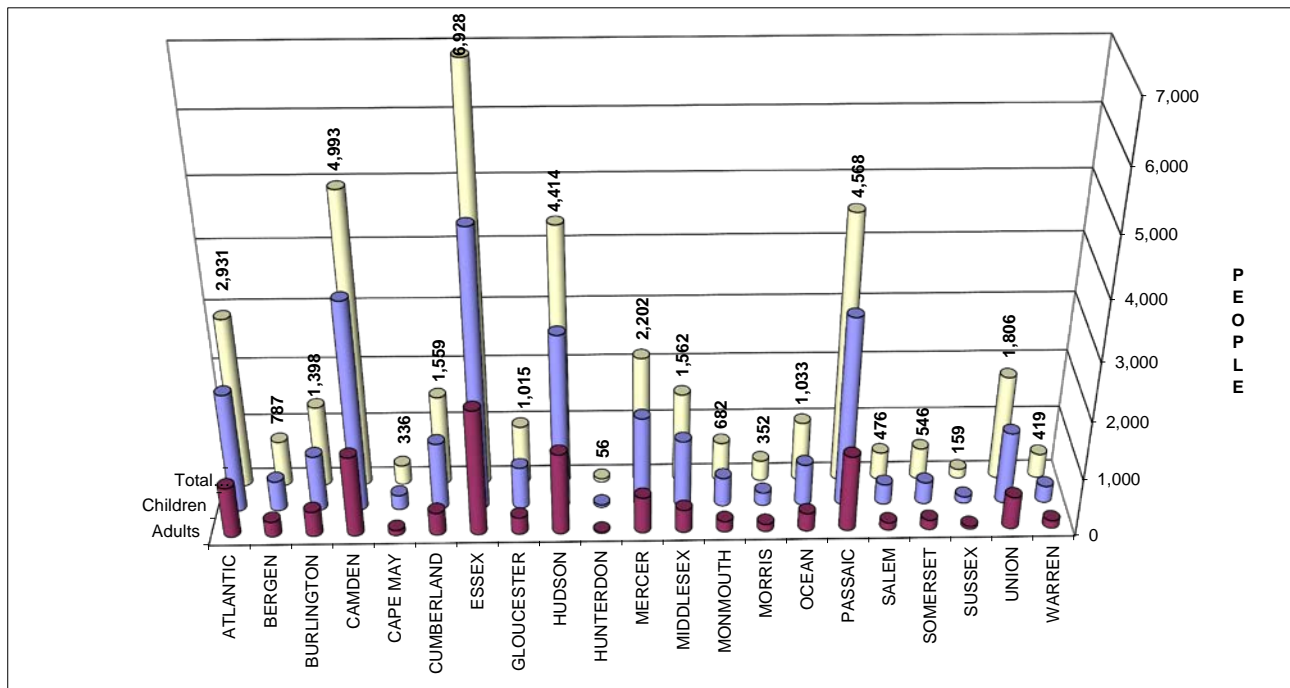
Table 2B
WFNJ/TANF
PROGRAM

**NUMBER OF PARTICIPATING PERSONS, ADULTS, AND CHILDREN
BY COUNTY FOR JANUARY 2018**

Δ= ↑ Caseload %
*= ↓ Caseload %

PERSONS

County	Adults	Children	Child/Adult Ratio	Total Persons	% Chng (1 Yr)	Persons Per Case
ATLANTIC	874	2,057	2.35	2,931	(15.1)	2.58
BERGEN	263	524	1.99	787	(33.6) *	2.43
BURLINGTON	434	964	2.22	1,398	(19.4)	2.49
CAMDEN	1,392	3,601	2.59	4,993	(15.5)	2.49
CAPE MAY	89	247	2.78	336	(26.3)	2.63
CUMBERLAND	392	1,167	2.98	1,559	(14.9)	2.73
ESSEX	2,175	4,753	2.19	6,928	(17.0)	2.52
GLOUCESTER	292	723	2.48	1,015	(23.6)	2.37
HUDSON	1,405	3,009	2.14	4,414	(16.8)	2.48
HUNTERDON	15	41	2.73	56	(28.2) *	2.43
MERCER	626	1,576	2.52	2,202	(10.6)	2.45
MIDDLESEX	397	1,165	2.93	1,562	(12.0)	2.45
MONMOUTH	184	498	2.71	682	(6.7)	2.32
MORRIS	126	226	1.79	352	(8.8)	2.53
OCEAN	309	724	2.34	1,033	(19.7)	2.55
PASSAIC	1,314	3,254	2.48	4,568	(26.3)	2.66
SALEM	128	348	2.72	476	(1.4) Δ	2.53
SOMERSET	166	380	2.29	546	2.6 Δ	2.45
SUSSEX	47	112	2.38	159	(7.0)	2.61
UNION	561	1,245	2.22	1,806	(23.7)	2.66
WARREN	132	287	2.17	419	(5.0) Δ	2.62
NJ TOTAL	11,321	26,901	2.38	38,222	(17.7)	2.53



Data is derived from NJ MMIS Shared Data Warehouse Issuance files.
Effective July 2013 this data query source was converted to the SDW

TABLE 3

Work Participation Rates Achieved Over 12 Month Period
Ending With JANUARY 2018

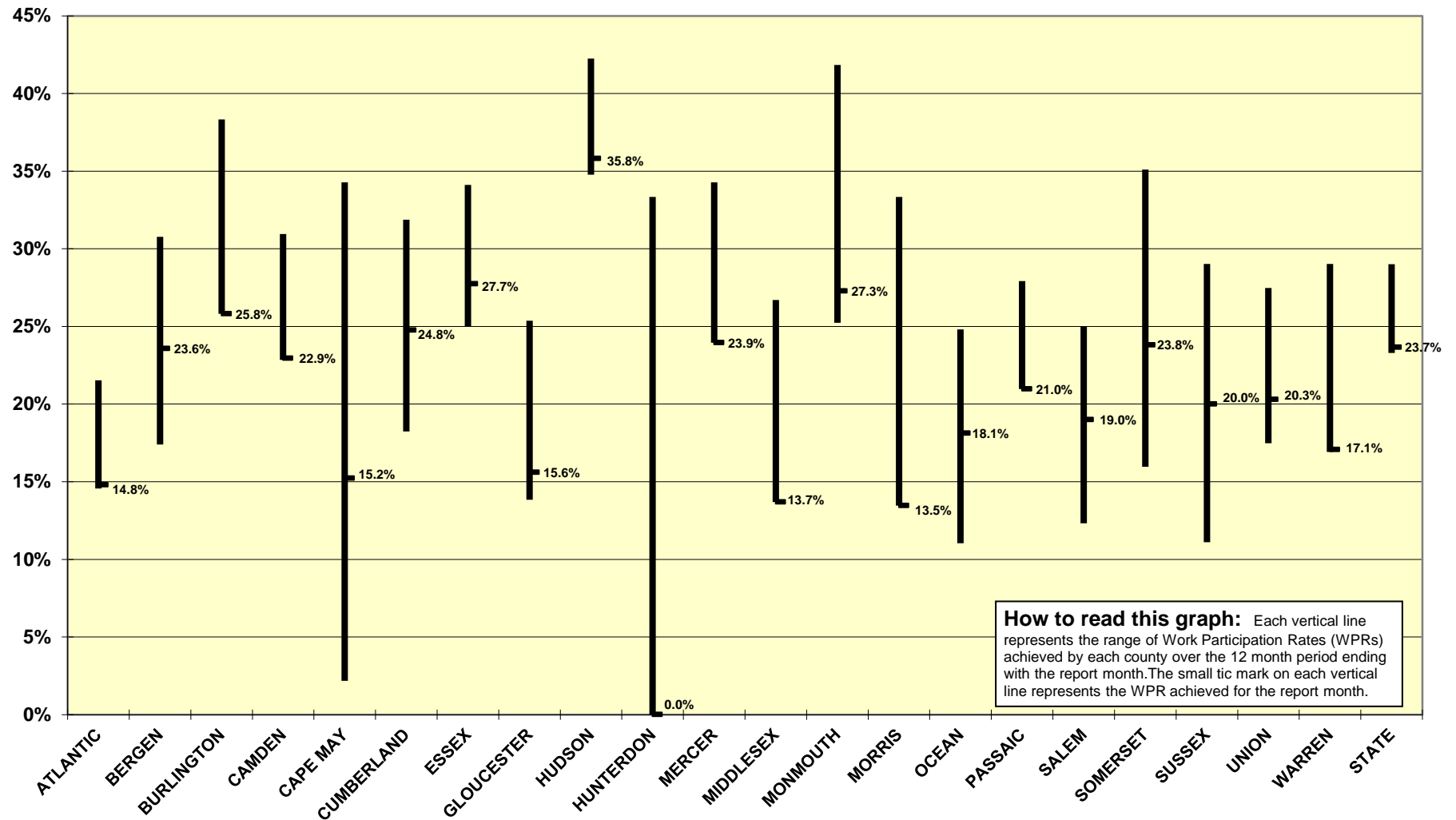
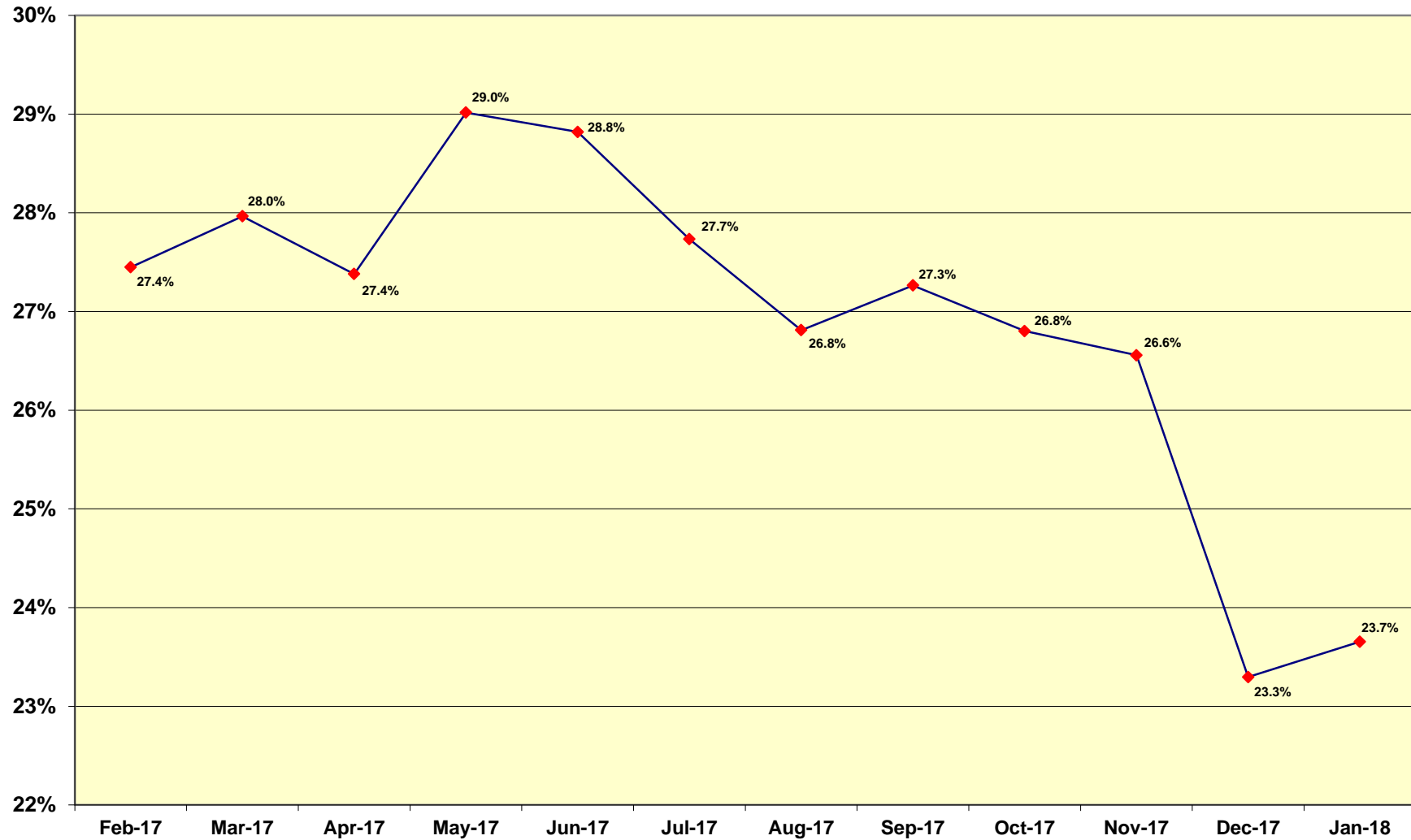


TABLE 4

WFNJ/TANF Work Participation Rates
for 12-Month Period Ending with JANUARY 2018 Statewide



* The Work Participation rate measures the number of countable Temporary Assistance for Needy Families (TANF) participants based on federal formula. The reported rate is considered to be preliminary until officially calculated by the federal government soon after the close of each federal fiscal year.

Table 5
NJ SNAP
(FOOD STAMPS)

**NUMBER OF PARTICIPATING HOUSEHOLDS, PERSONS, ADULTS
AND CHILDREN FOR JANUARY 2018 (STATEWIDE)**

JANUARY 2016 THROUGH JANUARY 2018

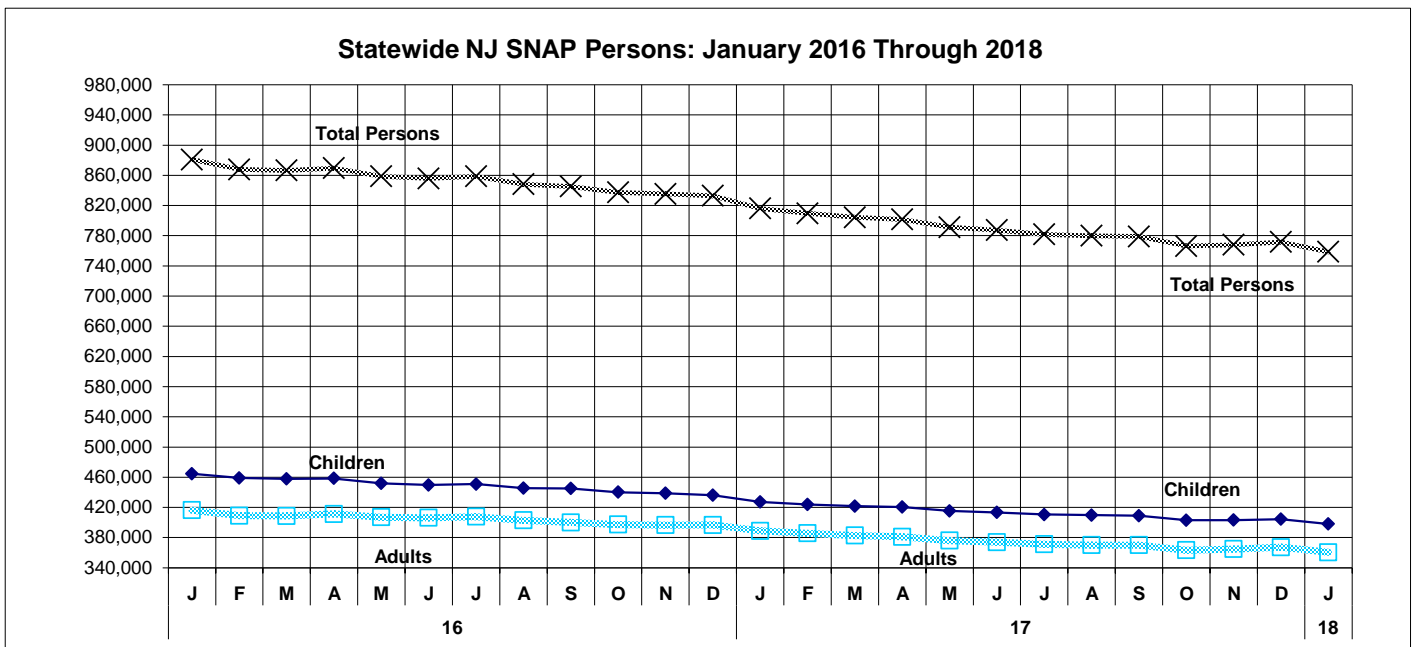
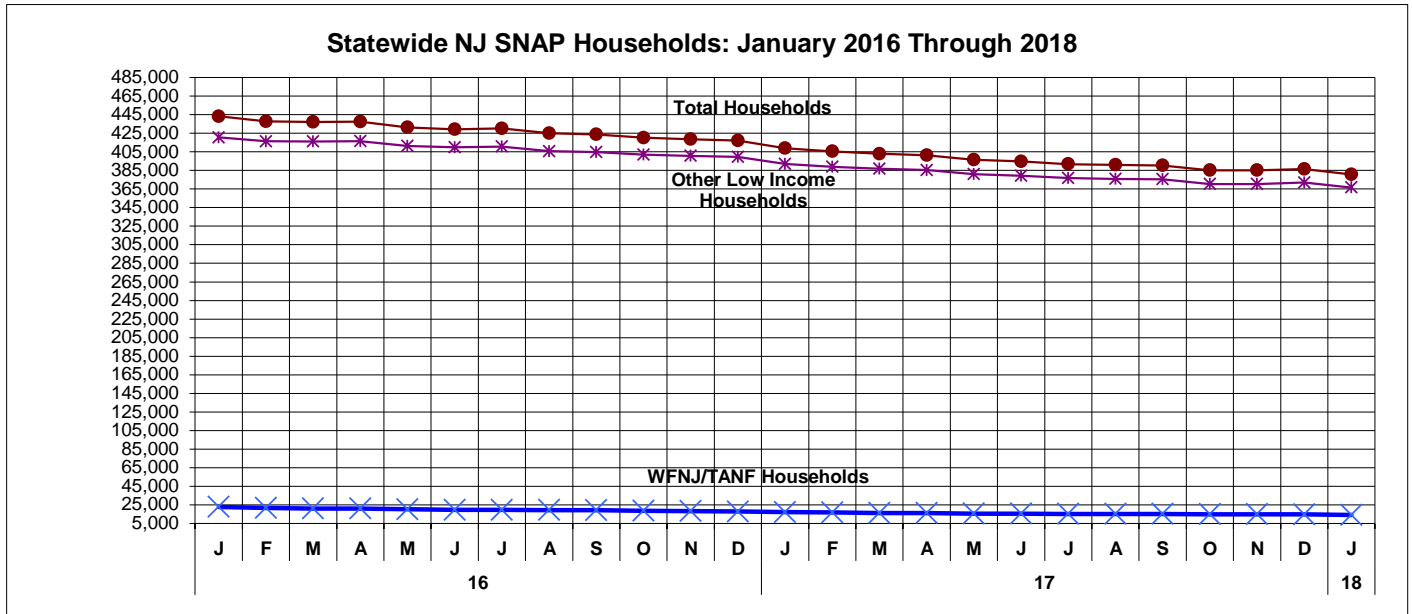
		HOUSEHOLDS				PERSONS					
		WFNJ/ TANF	Other low income	TOTAL	% CHNG (1 Yr.)	Adults	Children	TOTAL	% CHNG (1 Yr.)	Age 60+	People with a disability
2016	JAN	22,704	420,599	443,303	-2.4%	464,619	416,207	880,826	-2.6%		
	FEB	21,540	416,382	437,922	-2.9%	458,883	408,965	867,848	-3.3%		
	MAR	20,936	416,167	437,103	-2.3%	457,814	408,604	866,418	-2.6%		
	APR	20,886	416,683	437,569	-2.3%	458,373	411,189	869,562	-2.3%		
	MAY	20,066	411,401	431,467	-3.5%	451,706	406,955	858,661	-3.4%		
	JUN	19,521	409,831	429,352	-3.5%	449,541	406,259	855,800	-3.2%		
	JUL	19,521	410,696	430,217	-3.4%	450,900	407,672	858,572	-3.1%		
	AUG	19,335	405,719	425,054	-4.6%	445,381	402,834	848,215	-4.2%		
	SEP	19,095	404,660	423,755	-4.6%	445,123	400,055	845,178	-4.3%		
	OCT	18,374	401,887	420,261	-6.3%	440,110	397,229	837,339	-6.1%		
	NOV	18,083	400,647	418,730	-5.6%	438,718	396,519	835,237	-5.2%		
	DEC	17,706	399,542	417,248	-6.4%	436,173	396,733	832,906	-5.9%		
2016 Average		19,814	409,518	429,332		449,778	404,935	854,714			
2017	JAN	17,044	391,958	409,002	-7.7%	427,349	388,777	816,126	-7.3%		
	FEB	16,687	388,842	405,529	-7.4%	423,886	385,701	809,587	-6.7%		
	MAR	16,158	386,779	402,937	-7.8%	421,536	382,755	804,291	-7.2%		
	APR	15,935	385,361	401,296	-8.3%	420,390	381,088	801,478	-7.8%		
	MAY	15,525	381,043	396,568	-8.1%	415,301	375,949	791,250	-7.9%		
	JUN	15,348	379,341	394,689	-8.1%	413,436	373,920	787,356	-8.0%		
	JUL	15,109	376,747	391,856	-8.9%	410,582	371,153	781,735	-8.9%		
	AUG	15,071	375,901	390,972	-8.0%	409,795	370,000	779,795	-8.1%	132,403	221,507
	SEP	15,032	375,469	390,501	-7.8%	409,052	369,928	778,980	-7.8%	132,065	221,449
	OCT	14,762	370,462	385,224	-8.3%	403,103	363,198	766,301	-8.5%	130,948	219,170
	NOV	14,783	370,436	385,219	-8.0%	403,158	364,706	767,864	-8.1%	130,391	219,210
	DEC	14,648	371,916	386,564	-7.4%	404,418	367,199	771,617	-7.4%	130,292	222,460
2017 Average		15,509	379,521	395,030		413,501	374,531	788,032		131,220	220,759
2018	JAN	13,996	366,670	380,666	-6.9%	398,026	360,502	758,528	-7.1%	128,879	218,735

This Table is based on those Households & Persons that received SNAP issuances (benefits) during the month.

Data is derived from NJ MMIS Shared Data Warehouse.
Effective July 2013 this data query source was converted to the SDW.

* Age 60+ and People with a disability columns are independent subsets of the total persons. An individual might appear in both columns.

**TABLE 6: NJ SNAP (FOOD STAMPS)
TRENDS FOR PARTICIPATING HOUSEHOLDS & PERSONS
JANUARY 2016 THROUGH JANUARY 2018 (STATEWIDE)**



Data is derived from NJ MMIS Shared Data Warehouse.
Effective July 2013 this data query source was converted to the SDW.

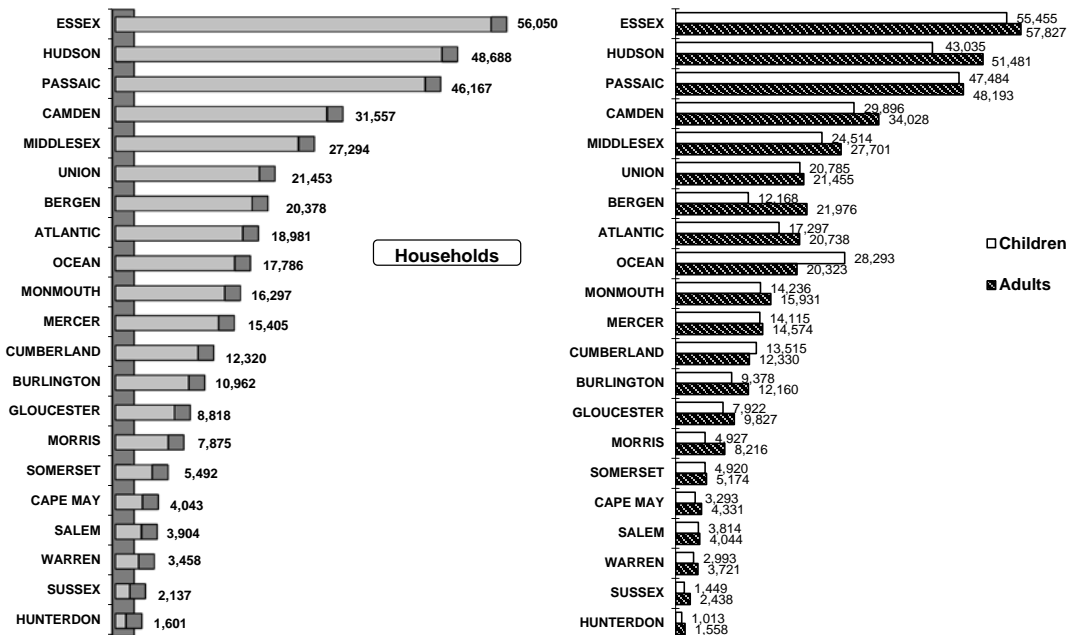
Table 7
NJ SNAP

**NUMBER OF PARTICIPATING HOUSEHOLDS, PERSONS, ADULTS
AND CHILDREN BY COUNTY FOR JANUARY 2018**

County	HOUSEHOLDS				PERSONS					
	WFNJ/ TANF	Other low income	TOTAL	% Chng (1 Yr)	Adults	Children	TOTAL	% Chng (1 Yr)	Age 60+	People with a disability
ATLANTIC	1,028	17,953	18,981	(5.2)	20,738	17,297	38,035	(5.8)	5,210	10,127
BERGEN	329	20,049	20,378	(10.1) *	21,976	12,168	34,144	(11.8) *	12,128	15,161
BURLINGTON	526	10,436	10,962	(10.1) *	12,160	9,378	21,538	(10.0) *	3,001	6,946
CAMDEN	1,737	29,820	31,557	(4.0) Δ	34,028	29,896	63,924	(4.3) Δ	8,192	18,681
CAPE MAY	136	3,907	4,043	(5.0)	4,331	3,293	7,624	(8.7)	1,093	2,474
CUMBERLAND	536	11,784	12,320	(6.5)	12,330	13,515	25,845	(5.7)	2,927	7,212
ESSEX	2,653	53,397	56,050	(6.5)	57,827	55,455	113,282	(6.4)	15,795	29,070
GLOUCESTER	378	8,440	8,818	(6.5)	9,827	7,922	17,749	(5.5)	2,344	5,650
HUDSON	1,651	47,037	48,688	(6.8)	51,481	43,035	94,516	(6.4)	18,800	27,141
HUNTERDON	21	1,580	1,601	(6.5)	1,558	1,013	2,571	(7.4)	576	1,045
MERCER	816	14,589	15,405	(4.5)	14,574	14,115	28,689	(4.3) Δ	4,174	9,541
MIDDLESEX	576	26,718	27,294	(6.4)	27,701	24,514	52,215	(7.3)	12,129	16,801
MONMOUTH	279	16,018	16,297	(7.7)	15,931	14,236	30,167	(8.6)	5,626	9,681
MORRIS	117	7,758	7,875	(4.8)	8,216	4,927	13,143	(4.7)	4,072	5,321
OCEAN	361	17,425	17,786	(12.4) *	20,323	28,293	48,616	(12.7) *	5,515	10,298
PASSAIC	1,642	44,525	46,167	(7.0)	48,193	47,484	95,677	(6.2)	14,613	21,936
SALEM	167	3,737	3,904	(1.7) Δ	4,044	3,814	7,858	(1.4) Δ	938	2,362
SOMERSET	208	5,284	5,492	(8.0)	5,174	4,920	10,094	(9.7)	2,121	3,321
SUSSEX	66	2,071	2,137	(8.1)	2,438	1,449	3,887	(8.1)	787	1,617
UNION	622	20,831	21,453	(9.3)	21,455	20,785	42,240	(8.2)	7,773	12,064
WARREN	147	3,311	3,458	1.5 Δ	3,721	2,993	6,714	0.9 Δ	1,065	2,286
NJ TOTAL	13,996	366,670	380,666	(6.9)	398,026	360,502	758,528	(7.1)	128,879	218,735

Δ= ↑ Caseload %
*= ↓ Caseload %

Total NJ SNAP Recipients
JANUARY 2018 By County



Data is derived from NJ MMIS Shared Data Warehouse
Effective July 2013 this data query source was converted to the SDW

* Age 60+ and People with a disability columns are independent subsets of the total persons. An individual might appear in both columns.

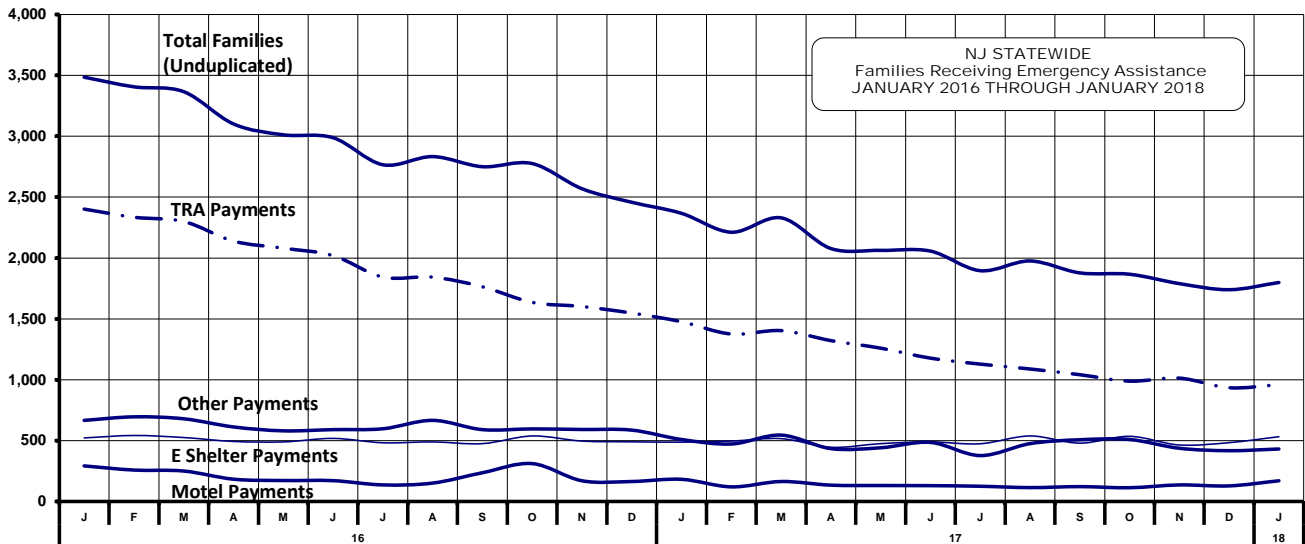
Table 8

TOTAL NUMBER OF ELIGIBLE FAMILIES RECEIVING EMERGENCY ASSISTANCE PAYMENTS

EMERGENCY ASSISTANCE (STATEWIDE)

JANUARY 2016 THROUGH JANUARY 2018 - STATEWIDE

		TOTAL WFNJ/EA		Temp Rent Asst.		Motel Housing		Shelter/Transitional Housing		Other EA	
		Families (Undupl)	% CHNG (1 YR)	Payments (Undupl)	% CHNG (1 YR)	Payments (Undupl)	% CHNG (1 YR)	Payments (Undupl)	% CHNG (1 YR)	Payments (Undupl)	% CHNG (1 YR)
2016	JAN	3,485	-40.8%	2,402	-43.8%	293	-48.4%	523	-15.8%	667	-50.2%
	FEB	3,406	-40.1%	2,335	-43.8%	259	-45.6%	543	-6.7%	696	-44.1%
	MAR	3,366	-41.8%	2,300	-45.5%	251	-51.3%	526	-9.6%	680	-45.6%
	APR	3,101	-46.1%	2,139	-49.4%	184	-58.7%	494	-20.3%	613	-49.5%
	MAY	3,012	-45.1%	2,081	-47.9%	173	-58.4%	490	-18.2%	581	-50.3%
	JUN	2,988	-43.6%	2,020	-48.3%	172	-49.6%	519	-17.5%	591	-48.6%
	JUL	2,766	-45.8%	1,844	-50.2%	137	-65.6%	483	-14.5%	598	-42.4%
	AUG	2,833	-39.5%	1,843	-45.3%	152	-52.1%	490	-7.9%	667	-37.4%
	SEP	2,750	-38.3%	1,764	-44.2%	237	-33.1%	476	-16.5%	591	-35.8%
	OCT	2,776	-34.8%	1,636	-44.1%	312	-16.8%	539	2.7%	597	-40.8%
	NOV	2,569	-33.2%	1,602	-37.4%	171	-46.4%	497	-15.5%	592	-27.7%
	DEC	2,458	-36.2%	1,548	-41.4%	165	-53.3%	491	-12.5%	587	-30.0%
2016 Average		2,959		1,960		209		506		622	
2017	JAN	2,367	-32.1%	1,477	-38.5%	183	-37.5%	488	-6.7%	510	-23.5%
	FEB	2,212	-35.1%	1,376	-41.1%	121	-53.3%	497	-8.5%	473	-32.0%
	MAR	2,330	-30.8%	1,404	-39.0%	165	-34.3%	517	-1.7%	546	-19.7%
	APR	2,078	-33.0%	1,322	-38.2%	135	-26.6%	446	-9.7%	435	-29.0%
	MAY	2,063	-31.5%	1,260	-39.5%	132	-23.7%	476	-2.9%	442	-23.9%
	JUN	2,057	-31.2%	1,178	-41.7%	131	-23.8%	490	-5.6%	486	-17.8%
	JUL	1,896	-31.5%	1,129	-38.8%	126	-8.0%	475	-1.7%	378	-36.8%
	AUG	1,976	-30.3%	1,089	-40.9%	115	-24.3%	539	10.0%	476	-28.6%
	SEP	1,878	-31.7%	1,042	-40.9%	123	-48.1%	480	0.8%	508	-14.0%
	OCT	1,867	-32.7%	989	-39.5%	114	-63.5%	536	-0.6%	510	-14.6%
	NOV	1,790	-30.3%	1,014	-36.7%	137	-19.9%	465	-6.4%	438	-26.0%
	DEC	1,740	-29.2%	935	-39.6%	129	-21.8%	484	-1.4%	418	-28.8%
2017 Average		2,021		1,185		134		491		468	
2018	JAN	1,799	-24.0%	960	-35.0%	171	-6.6%	533	9.2%	432	-15.3%



WFNJ/EA data is derived from NJ MMIS Shared Data Warehouse. Effective July 2013 this data query source was converted to the SDW.

* Effective Feb '11 Transitional Housing Payments were removed from "Other EA Payments" and added to "Shelter Payments."

Table 9
EMERGENCY
ASSISTANCE
(BY COUNTY)

**NUMBER OF TOTAL ELIGIBLE FAMILIES RECEIVING EMERGENCY ASSISTANCE PAYMENTS
BY COUNTY (UNDULICATED CASES) JANUARY 2018**

County	TOTAL WFNJ/EA Families (Undupl)	% CHNG From Jan 17	Temp Rent Asst. Payments (Undupl)	Motel Housing Payments (Undupl)	Shelter/Transitional Housing Payments (Undupl)	Other WFNJ/EA Payments (Undupl)	SSI Recipients Receiving EA**
ATLANTIC	91	-19.5%	75	1	2	30	56
BERGEN	57	11.8% Δ	20	0	24	14	9
BURLINGTON	102	-16.4%	20	7	75	8	39
CAMDEN	86	-18.1%	38	12	33	15	8
CAPE MAY	22	-18.5%	12	10	0	5	7
CUMBERLAND	2	-33.3%	1	0	1	0	2
ESSEX	362	-31.0%	160	0	189	44	102
GLOUCESTER	28	-22.2%	13	0	14	4	13
HUDSON	169	-11.5%	112	11	38	57	13
HUNTERDON	0	0.0% Δ	0	0	0	0	0
MERCER	120	-13.7%	62	9	46	35	52
MIDDLESEX	94	-8.7%	25	47	0	43	14
MONMOUTH	27	8.0% Δ	2	2	24	0	5
MORRIS	20	-56.5% *	10	5	4	8	23
OCEAN	86	-25.2%	56	30	0	35	6
PASSAIC	335	-35.7% *	234	16	45	80	36
SALEM	4	0.0% Δ	2	1	0	1	4
SOMERSET	50	-13.8%	31	8	5	12	19
SUSSEX	2	-88.2% *	0	0	1	2	2
UNION	131	-12.7%	80	9	31	38	20
WARREN	11	0.0% Δ	7	3	1	1	4
NJ TOTAL	1,799	-24.0%	960	171	533	432	434

Δ= ↑ Caseload %

* = ↓ Caseload %

**SSI-EA includes pay codes 22 and 24, data is derived from NJ Division of Family Development FAMIS Report #FM430-03A

WFNJ/EA data is derived from NJ MMIS Shared Data Warehouse.

Effective July 2013 this data query source was converted to the SDW

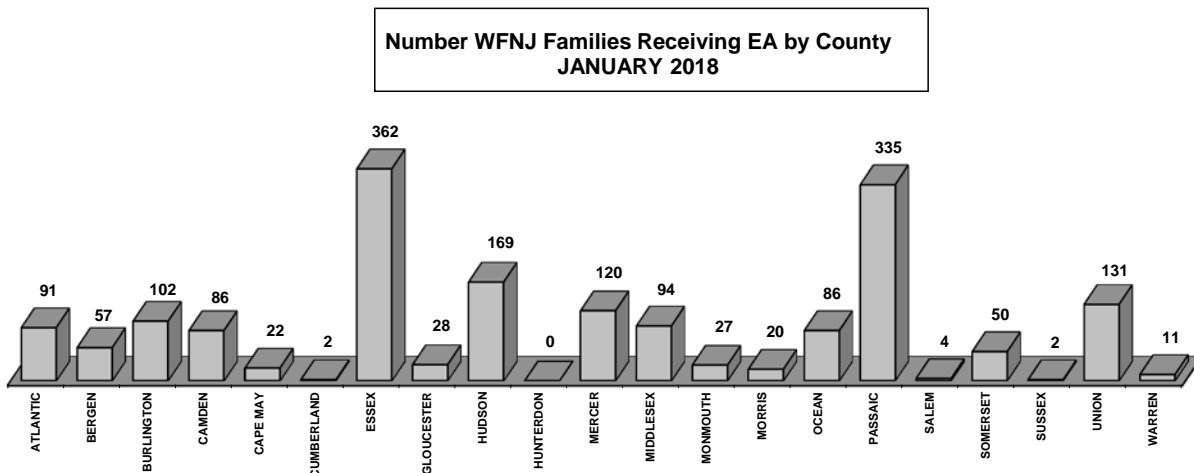
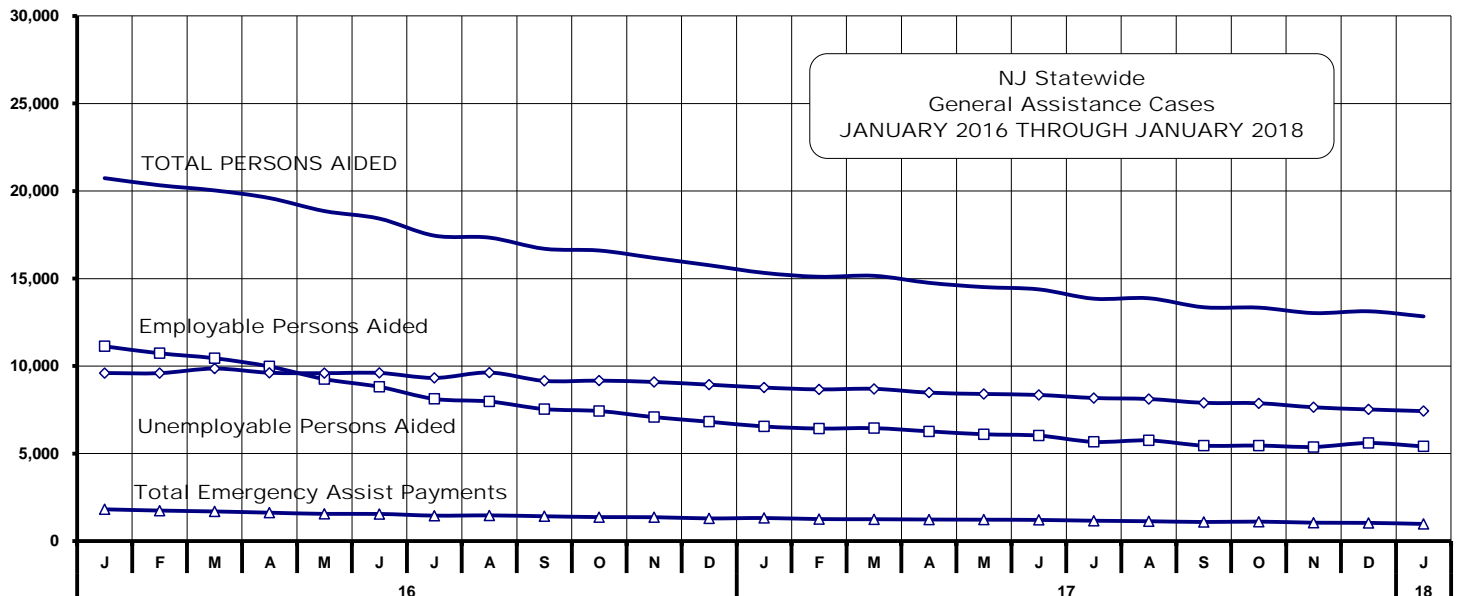


Table 10
GENERAL ASSISTANCE PROGRAM
NUMBER OF EMPLOYABLE AND UNEMPLOYABLE RECIPIENTS AND EMERGENCY ASSISTANCE PAYMENTS FOR JANUARY 2018 - STATEWIDE
JANUARY 2016 THROUGH JANUARY 2018

		Total Cases						Emergency Assistance Cases			
		Employable	% Chng (1 Yr)	Unemployable	% Chng (1 Yr)	Total	% Chng (1 Yr)	Temporary Rental Assistance	Other GA-EA	Total	% Chng (1 Yr)
2016	JAN	11,130	-33.8%	9,604	-17.8%	20,734	-27.2%	1,819	1,504	3,323	-35.8%
	FEB	10,731	-34.0%	9,597	-15.9%	20,328	-26.6%	1,748	1,578	3,326	-32.1%
	MAR	10,449	-35.2%	9,585	-15.7%	20,034	-27.2%	1,698	1,654	3,352	-36.8%
	APR	9,977	-35.2%	9,620	-14.2%	19,597	-26.3%	1,627	1,612	3,239	-36.9%
	MAY	9,257	-38.7%	9,596	-12.8%	18,853	-27.8%	1,559	1,163	2,722	-43.8%
	JUN	8,816	-39.9%	9,607	-12.2%	18,423	-28.0%	1,556	1,365	2,921	-38.3%
	JUL	8,126	-42.1%	9,324	-13.4%	17,450	-29.6%	1,459	1,236	2,695	-41.5%
	AUG	7,978	-41.1%	9,360	-11.5%	17,338	-28.1%	1,473	1,389	2,862	-30.1%
	SEP	7,545	-42.3%	9,156	-12.2%	16,701	-28.9%	1,423	1,209	2,632	-31.9%
	OCT	7,432	-41.2%	9,169	-11.0%	16,601	-27.7%	1,375	1,427	2,802	-28.5%
	NOV	7,084	-40.5%	9,093	-9.6%	16,177	-26.4%	1,369	1,328	2,697	-21.2%
	DEC	6,823	-42.3%	8,938	-10.2%	15,761	-27.6%	1,300	1,251	2,551	-31.6%
2016 Average		8,779		9,387		18,166		1,534	1,393	2,927	
2017	JAN	6,551	-41.1%	8,773	-8.7%	15,324	-26.1%	1,323	1,190	2,513	-24.4%
	FEB	6,433	-40.1%	8,669	-9.7%	15,102	-25.7%	1,262	1,111	2,373	-28.7%
	MAR	6,455	-38.2%	8,701	-9.2%	15,156	-24.3%	1,254	1,185	2,439	-27.2%
	APR	6,273	-37.1%	8,483	-11.8%	14,756	-24.7%	1,237	1,174	2,411	-25.6%
	MAY	6,105	-34.0%	8,407	-12.4%	14,512	-23.0%	1,227	1,180	2,407	-11.6%
	JUN	6,029	-31.6%	8,352	-13.1%	14,381	-21.9%	1,214	1,192	2,406	-17.6%
	JUL	5,672	-30.2%	8,178	-12.3%	13,850	-20.6%	1,167	1,011	2,178	-19.2%
	AUG	5,754	-27.9%	8,120	-13.2%	13,874	-20.0%	1,139	1,196	2,335	-18.4%
	SEP	5,458	-27.7%	7,902	-13.7%	13,360	-20.0%	1,095	1,039	2,134	-18.9%
	OCT	5,461	-26.5%	7,878	-14.1%	13,339	-19.6%	1,117	1,148	2,265	-19.2%
	NOV	5,382	-24.0%	7,646	-15.9%	13,028	-19.5%	1,055	936	1,991	-26.2%
	DEC	5,606	-17.8%	7,524	-15.8%	13,130	-16.7%	1,045	1,059	2,104	-17.5%
2017 Average		5,932		8,219		14,151		1,178	1,118	2,296	
2018	JAN	5,411	-17.4%	7,428	-15.3%	12,839	-16.2%	984	1,113	2,097	-16.6%



Source: NJ Division of Family Development, GA Fiscal Unit

TABLE 11

GENERAL
ASSISTANCE
PROGRAM**EMPLOYABLE AND UNEMPLOYABLE CASES
AND EMERGENCY ASSISTANCE CASES RECEIVING PAYMENTS BY COUNTY**

JANUARY 2018

County	Total Cases				Emergency Assistance Cases					
	Employable	% Chng (From Jan 17)	Unemployable	% Chng (From Jan 17)	Total	% Chng (From Jan 17)	Temporary Rental Assist.	Other GA-EA	Total	% Chng (From Jan 17)
ATLANTIC	595	-22.5%	379	-9.3%	974	-17.9%	127	35	162	-12.4%
BERGEN	290	-33.8%	576	-14.8%	866	-22.3%	120	46	166	-22.8%
BURLINGTON	264	-21.2%	459	-20.0%	723	-20.5%	43	146	189	0.0%
CAMDEN	634	-8.0%	897	-10.7%	1,531	-9.6%	53	122	175	-4.4%
CAPE MAY	67	34.0%	106	6.0%	173	15.3% Δ	26	44	70	9.4%
CUMBERLAND	237	-12.5%	327	-1.2%	564	-6.3%	1	5	6	-53.8% *
ESSEX	873	-16.0%	488	-26.7%	1,361	-20.2%	57	132	189	-28.1%
GLOUCESTER	139	-46.7%	259	-18.6%	398	-31.3% *	3	27	30	-43.4% *
HUDSON	490	-20.7%	1,011	-14.9%	1,501	-16.9%	82	28	110	-28.1%
HUNTERDON	50	42.9%	77	10.0%	127	21.0% Δ	15	18	33	17.9% Δ
MERCER	241	2.6%	462	-14.6%	703	-9.4%	42	48	90	-36.2%
MIDDLESEX	309	-7.8%	399	0.3%	708	-3.4%	52	127	179	-21.5%
MONMOUTH	69	46.8%	181	-2.2%	250	7.8% Δ	2	17	19	0.0%
MORRIS	149	-8.0%	229	-20.5%	378	-16.0%	63	53	116	-22.1%
OCEAN	199	-13.9%	327	-1.8%	526	-6.7%	76	87	163	9.4%
PASSAIC	258	-36.8%	622	-22.3%	880	-27.2% *	92	11	103	-39.1% *
SALEM	52	26.8%	75	-42.3%	127	-25.7%	6	4	10	-16.7%
SOMERSET	59	-10.6%	60	-30.2%	119	-21.7%	22	13	35	-28.6%
SUSSEX	56	-21.1%	49	16.7%	105	-7.1%	5	26	31	106.7% Δ
UNION	281	-21.9%	344	-32.5%	625	-28.2% *	88	94	182	-11.7%
WARREN	99	8.8%	101	-11.4%	200	-2.4%	9	30	39	30.0% Δ
NJ TOTAL	5,411	-17.4%	7,428	-15.3%	12,839	-16.2%	984	1,113	2,097	-16.6%

Δ = ↑ Caseload %

* = ↓ Caseload %

Source: NJ Division of Family Development, GA Fiscal Unit

TABLE 12
OFFICE OF CHILD
SUPPORT
SERVICES

OFFICE OF CHILD SUPPORT SERVICES
Quarterly Performance Report
State Summary
TITLE IV-D SOURCE COLLECTION REPORT
Comparison of Quarter-1 (FFY 17 vs. FFY 18)

COLLECTION SOURCE	TOTAL 10/1/2016 - 12/31/2016	% OF TOTAL COLLECTIONS	TOTAL 10/1/2017 - 12/31/2017	% OF TOTAL COLLECTIONS	DOLLAR CHANGE	% CHANGE
FEDERAL TAX	\$ 675,634	0.22%	\$ 920,940	0.31%	\$ 245,306	36.31%
STATE TAX	\$ 381,981	0.12%	\$ 349,070	0.12%	\$ (32,911)	-8.62%
UIB	\$ 7,128,001	2.28%	\$ 6,788,686	2.26%	\$ (339,315)	-4.76%
INC WITHHOLD	\$ 222,860,001	71.32%	\$ 212,688,781	70.86%	\$ (10,171,220)	-4.56%
FROM OTHER STATES	\$ 12,144,878	3.89%	\$ 12,301,786	4.10%	\$ 156,908	1.29%
ADMIN ENFORCEMENT	\$ 3,176,070	1.02%	\$ 3,569,004	1.19%	\$ 392,934	12.37%
OTHER	\$ 66,113,984	21.16%	\$ 63,534,555	21.17%	\$ (2,579,429)	-3.90%
TOTAL COLLECTIONS*	\$ 312,480,549	100%	\$ 300,152,822	100%	\$ (12,327,727)	-3.95%
DISTRIBUTED COLLECTIONS**	\$ 287,298,897		\$ 267,387,613		\$ (19,911,284)	-6.93%

* Includes collections on both current support and arrears.

** Includes collections on both current support and arrears; also includes money sent to other states.

SOURCE: NJKiDS (Based on Federal Quarterly Report of Collections - OCSE-34A except Distributed Collections)
Distributed Collections obtained from Federal Data Report - OCSE-157, which is reported annually to Congress and used in the calculation of incentive dollars earned by each state.

TABLE 13

OFFICE OF CHILD
SUPPORT SERVICES**OFFICE OF CHILD SUPPORT SERVICES**

State Summary

TITLE IV-D PATERNITY ESTABLISHMENT REPORT

Comparison of January (FFY 17 vs. FFY 18)

County Office	JANUARY 2017			JANUARY 2018			Increase or Decrease (-) from FFY 2017 to FFY 2018
	Total Children Born Out of Wedlock*	Number of Paternities Established	Percent of Paternities Established	Total Children Born Out of Wedlock*	Number of Paternities Established	Percent of Paternities Established	
Atlantic	7,829	7,678	98.1%	7,408	7,289	98.4%	0.3%
Bergen	4,054	3,976	98.1%	3,622	3,571	98.6%	0.5%
Burlington	6,626	6,374	96.2%	6,134	5,895	96.1%	-0.1%
Camden	21,136	19,865	94.0%	19,439	18,409	94.7%	0.7%
Cape May	1,651	1,621	98.2%	1,505	1,485	98.7%	0.5%
Cumberland	8,072	8,019	99.3%	7,527	7,435	98.8%	-0.6%
Essex	34,624	31,840	92.0%	31,049	28,836	92.9%	0.9%
Gloucester	5,567	5,468	98.2%	5,253	5,176	98.5%	0.3%
Hudson	14,097	13,196	93.6%	12,749	11,974	93.9%	0.3%
Hunterdon	411	403	98.1%	358	356	99.4%	1.4%
Mercer	9,260	8,879	95.9%	8,592	8,274	96.3%	0.4%
Middlesex	8,453	8,192	96.9%	7,696	7,466	97.0%	0.1%
Monmouth	6,947	6,658	95.8%	6,452	6,162	95.5%	-0.3%
Morris	1,784	1,753	98.3%	1,596	1,558	97.6%	-0.6%
Ocean	6,028	5,837	96.8%	5,595	5,440	97.2%	0.4%
Passaic	14,730	13,689	92.9%	13,655	12,652	92.7%	-0.3%
Salem	2,907	2,807	96.6%	2,932	2,833	96.6%	0.1%
Somerset	2,018	1,953	96.8%	1,850	1,784	96.4%	-0.3%
Sussex	755	748	99.1%	692	687	99.3%	0.2%
Union	12,706	11,805	92.9%	11,633	10,976	94.4%	1.4%
Warren	1,216	1,196	98.4%	1,127	1,131	100.4%	2.0%
NJ TOTALS	170,871	161,957	94.8%	156,864	149,389	95.2%	0.5%

SOURCE: NJKiDS (Based on Federal Performance Measures - OCSE-157)

* Information on Out of Wedlock Births obtained from NJ Bureau of Vital Statistics

TABLE 14

OFFICE OF CHILD
SUPPORT SERVICES**OFFICE OF CHILD SUPPORT SERVICES**

State Summary

TITLE IV-D REPORT OF CASES WITH ORDERS

Comparison of January (FFY 17 vs. FFY 18)

County Office	January 2017			January 2018			Increase or Decrease (-) from FFY 2017 to FFY 2018
	TOTAL CASES	CASES WITH ORDERS	% OF CASES WITH ORDERS	TOTAL CASES	CASES WITH ORDERS	% OF CASES WITH ORDERS	
Atlantic	13,707	12,066	88.0%	13,276	11,486	86.5%	-1.5%
Bergen	13,362	12,773	95.6%	12,459	11,989	96.2%	0.6%
Burlington	15,547	13,651	87.8%	14,881	13,060	87.8%	0.0%
Camden	34,968	28,547	81.6%	33,132	27,664	83.5%	1.9%
Cape May	3,677	3,224	87.7%	3,346	3,038	90.8%	3.1%
Cumberland	13,232	12,501	94.5%	12,752	11,945	93.7%	-0.8%
Essex	52,490	40,513	77.2%	48,414	37,915	78.3%	1.1%
Gloucester	11,687	11,063	94.7%	11,281	10,664	94.5%	-0.1%
Hudson	26,433	20,935	79.2%	24,300	19,399	79.8%	0.6%
Hunterdon	1,716	1,644	95.8%	1,534	1,475	96.2%	0.3%
Mercer	16,414	14,255	86.8%	15,398	13,483	87.6%	0.7%
Middlesex	20,098	18,543	92.3%	18,704	17,291	92.4%	0.2%
Monmouth	16,252	15,287	94.1%	15,357	14,479	94.3%	0.2%
Morris	6,713	6,433	95.8%	6,265	6,019	96.1%	0.2%
Ocean	16,621	15,750	94.8%	15,658	15,005	95.8%	1.1%
Passaic	26,192	19,052	72.7%	25,090	18,246	72.7%	0.0%
Salem	4,753	4,536	95.4%	4,620	4,439	96.1%	0.6%
Somerset	5,733	5,217	91.0%	5,288	4,955	93.7%	2.7%
Sussex	3,015	2,912	96.6%	2,876	2,731	95.0%	-1.6%
Union	21,345	19,236	90.1%	19,728	18,228	92.4%	2.3%
Warren	3,385	3,058	90.3%	3,212	2,936	91.4%	1.1%
NJ TOTALS	327,340	281,196	85.9%	307,571	266,447	86.6%	0.7%

SOURCE: NJKiDS (Based on Federal Performance Measures - OCSE-157)

TABLE 15

OFFICE OF CHILD
SUPPORT SERVICES

OFFICE OF CHILD SUPPORT SERVICES

State Summary

TITLE IV-D COLLECTIONS ON CURRENT SUPPORT

Comparison of January (FFY 17 vs. FFY 18)

County Office	January 2017			January 2018			Increase or Decrease (-) from FFY 2017 to FFY 2018
	Total Current Support Due	Total Current Support Distributed	Total Collection Rate	Total Current Support Due	Total Current Support Distributed	Total Collection Rate	
Atlantic	\$4,143,098	\$2,724,693	65.8%	\$3,910,138	\$2,558,106	65.4%	-0.3%
Bergen	\$9,457,369	\$7,086,113	74.9%	\$8,890,596	\$6,799,888	76.5%	1.6%
Burlington	\$6,613,010	\$4,528,293	68.5%	\$6,264,167	\$4,360,389	69.6%	1.1%
Camden	\$8,537,121	\$5,131,100	60.1%	\$8,383,937	\$5,035,085	60.1%	0.0%
Cape May	\$1,191,186	\$820,371	68.9%	\$1,135,765	\$794,338	69.9%	1.1%
Cumberland	\$3,261,489	\$1,905,659	58.4%	\$3,138,098	\$1,877,869	59.8%	1.4%
Essex	\$13,246,610	\$7,586,396	57.3%	\$11,602,042	\$6,997,212	60.3%	3.0%
Gloucester	\$4,626,536	\$3,004,568	64.9%	\$4,482,980	\$2,948,392	65.8%	0.8%
Hudson	\$8,197,599	\$5,454,194	66.5%	\$7,472,853	\$5,107,441	68.3%	1.8%
Hunterdon	\$1,515,754	\$1,185,038	78.2%	\$1,326,804	\$1,060,454	79.9%	1.7%
Mercer	\$4,964,640	\$3,005,701	60.5%	\$4,473,521	\$2,796,383	62.5%	2.0%
Middlesex	\$9,146,820	\$6,087,694	66.6%	\$8,297,955	\$5,741,625	69.2%	2.6%
Monmouth	\$8,567,281	\$6,081,234	71.0%	\$7,846,821	\$5,649,290	72.0%	1.0%
Morris	\$5,045,657	\$3,667,399	72.7%	\$4,725,858	\$3,472,979	73.5%	0.8%
Ocean	\$7,637,009	\$5,503,137	72.1%	\$7,164,608	\$5,162,914	72.1%	0.0%
Passaic	\$7,503,777	\$4,623,879	61.6%	\$6,961,663	\$4,442,565	63.8%	2.2%
Salem	\$1,299,058	\$777,182	59.8%	\$1,196,272	\$729,267	61.0%	1.1%
Somerset	\$3,615,444	\$2,821,617	78.0%	\$3,388,186	\$2,701,056	79.7%	1.7%
Sussex	\$1,997,435	\$1,516,366	75.9%	\$1,945,315	\$1,471,678	75.7%	-0.3%
Union	\$7,777,913	\$5,089,861	65.4%	\$7,161,542	\$4,924,403	68.8%	3.3%
Warren	\$1,490,688	\$1,079,122	72.4%	\$1,441,971	\$1,076,440	74.7%	2.3%
NJ TOTALS	\$119,835,493	\$79,679,617	66.5%	\$111,211,090	\$75,707,773	68.1%	1.6%

SOURCE: NJKiDS (Based on Federal Performance Measures - OCSE-157)

TABLE 16

OFFICE OF CHILD
SUPPORT SERVICES**OFFICE OF CHILD SUPPORT SERVICES**

State Summary

TITLE IV-D CASES ARREARS COLLECTION REPORT

Comparison of January (FFY 17 vs. FFY 18)

County Office	January 2017			January 2018			Increase or Decrease (-) from FFY 2017 to FFY 2018
	Total Cases with Arrears	Total Amount Collected	Average Arrears Collection per Case	Total Cases with Arrears	Total Amount Collected	Average Arrears Collection per Case	
Atlantic	8,311	\$555,707	\$66.86	7,676	\$572,482	\$74.58	\$7.72
Bergen	8,512	\$945,044	\$111.02	7,788	\$1,070,617	\$137.47	\$26.45
Burlington	9,374	\$810,307	\$86.44	8,704	\$929,602	\$106.80	\$20.36
Camden	18,470	\$1,166,515	\$63.16	17,801	\$1,352,904	\$76.00	\$12.84
Cape May	2,287	\$191,439	\$83.71	2,133	\$201,587	\$94.51	\$10.80
Cumberland	8,530	\$490,784	\$57.54	7,982	\$564,213	\$70.69	\$13.15
Essex	28,200	\$1,800,536	\$63.85	24,075	\$2,248,636	\$93.40	\$29.55
Gloucester	7,803	\$585,574	\$75.04	7,278	\$650,868	\$89.43	\$14.38
Hudson	15,156	\$1,283,538	\$84.69	13,158	\$1,271,024	\$96.60	\$11.91
Hunterdon	1,036	\$150,969	\$145.72	949	\$131,320	\$138.38	-\$7.35
Mercer	9,788	\$648,622	\$66.27	8,952	\$849,770	\$94.93	\$28.66
Middlesex	12,800	\$1,052,689	\$82.24	11,571	\$1,283,245	\$110.90	\$28.66
Monmouth	10,290	\$1,067,268	\$103.72	9,302	\$1,167,658	\$125.53	\$21.81
Morris	4,501	\$583,604	\$129.66	4,053	\$535,768	\$132.19	\$2.53
Ocean	10,726	\$978,570	\$91.23	9,963	\$1,012,847	\$101.66	\$10.43
Passaic	13,613	\$949,648	\$69.76	12,146	\$1,104,947	\$90.97	\$21.21
Salem	2,997	\$145,645	\$48.60	2,789	\$225,401	\$80.82	\$32.22
Somerset	3,542	\$423,564	\$119.58	3,369	\$487,881	\$144.81	\$25.23
Sussex	2,065	\$233,139	\$112.90	1,873	\$262,881	\$140.35	\$27.45
Union	13,491	\$929,819	\$68.92	12,163	\$1,399,006	\$115.02	\$46.10
Warren	2,104	\$170,123	\$80.86	1,971	\$216,203	\$109.69	\$28.84
NJ TOTALS	193,596	\$15,163,104	\$78.32	175,696	\$17,538,860	\$99.83	\$21.50

SOURCE:OCSE-157 Child Support Enforcement Annual Data Report

Table 17
WFNJ**WORK FIRST NEW JERSEY STATISTICAL SUMMARY****JANUARY 2018**

COUNTY	<u>EMPLOYMENT DIRECTED ACTIVITIES</u>			EMPLOYED OPEN (WFNJ RECIPIENT)	SUPPORT SERVICES		CLOSED FOR EMPLOYMENT THIS MONTH	POST ASSISTANCE CHILD CARE
	CWEP	ALL	JOB		ON ACTIVE CASE			
		OTHER TRAINING	SEARCH		CHILD CARE	TRAINING REL. EXPENSES		
ATLANTIC	121	119	60	111	48	145	15	60
BERGEN	37	3	42	24	25	18	5	56
BURLINGTON	66	20	96	71	72	68	7	131
CAMDEN	219	115	12	220	207	134	34	233
CAPE MAY	7	6	13	4	3	12	3	17
CUMBERLAND	63	45	64	30	22	57	8	48
ESSEX	415	485	18	338	342	433	56	512
GLOUCESTER	19	20	5	33	5	30	6	43
HUDSON	130	286	6	157	188	218	36	279
HUNTERDON	1	0	5	1	1	0	0	5
MERCER	134	51	94	97	93	61	11	136
MIDDLESEX	29	32	58	48	29	35	10	82
MONMOUTH	31	23	63	43	48	35	5	61
MORRIS	4	1	12	14	9	5	4	14
OCEAN	5	104	0	27	22	29	2	81
PASSAIC	286	202	28	116	166	173	42	154
SALEM	2	14	9	11	8	6	2	9
SOMERSET	44	13	25	39	23	27	7	31
SUSSEX	7	1	10	7	2	0	2	9
UNION	205	91	3	43	56	86	9	112
WARREN	8	4	4	23	14	3	4	23
STATE	1,833	1,635	627	1,457	1,383	1,575	268	2,096

Data is derived from NJ Division of Family Development's FAMIS Reports RM064-01 & RM703-51, AdHoc Reports 5549 & 5598 and SDW Report WR00022WZ_CC

**DIVISION OF FAMILY DEVELOPMENT CURRENT PROGRAM STATISTICS
JANUARY 2018**

ACRONYMS

EMERGENCY ASSISTANCE (EA) - Payments to those eligible for WFNJ/TANF or WFNJ/GA, authorized during the 30 consecutive days immediately following the emergency (defined as a substantial loss of shelter, food, clothing, or household furnishings by fire, flood or other similar disaster) or if eligible individual or family is in an imminent or actual state of homelessness.

NJ SNAP - Formerly the Food Stamp Program, now known as **NJ SNAP** (NJ Supplemental Nutrition Assistance Program) authorized by Congress as a nutritional supplement program to provide low income households with more food of greater variety and better nutrition. Program eligibility is based on household income, resources, and expenses for medical, shelter, and dependent care. CWA staff refers certain recipients to the New Jersey Department of Labor for participation in the Food Stamp Employment and Training Program.

FAMIS: Family Assistance Management Information System

GAAS: General Assistance Automated System

NJKIDS: New Jersey Kids Deserve Support (Child Support Information Management System)

NJ MMIS SHARED DATA WAREHOUSE: The Shared Data Warehouse (SDW) is the repository for New Jersey's DFD and Medicaid data. Since 2003, OptumInsight has administered the SDW and provided access to the data through a reporting tool known as Business Objects.

OMEGA: Online Management of Economic Goal Achievement

SSI-EA: Supplemental Security Income-Emergency Assistance

WFNJ: Work First New Jersey - Fully implemented July 1, 1997, this is New Jersey's welfare reform program which responds to the requirements of the Federal Personal Responsibility and Work Opportunity Reconciliation Act (**PRWORA**) of 1996. PRWORA established Temporary Assistance for Needy Families (**TANF**) as the replacement for AFDC cash assistance. WFNJ includes two segments, **WFNJ/TANF** for families with children, and **WFNJ/GA** (General Assistance) for single adults and couples without dependent children. WFNJ emphasizes achieving self-sufficiency and limits lifetime receipt of financial assistance to a total of five years.

**DIVISION OF FAMILY DEVELOPMENT CURRENT PROGRAM STATISTICS
JANUARY 2018**

EXPLANATORY NOTES

The Department of Human Services Division of Family Development provides basic income and an opportunity to achieve self-sufficiency for individuals and families served by the Division's programs. The Division provides leadership, direction and supervision to those public agencies responsible for administering those programs and plans for and develops policies to promote self-sufficiency.

WFNJ Statistical Summary (Table 17)

Employment Directed Activities (EDA) - From Activities Summary Report (OMEGA report # RM064). Unduplicated count of persons participating in Community Work Experience Program (CWEP), All Other Training, or Job Search.

Number of Persons Employed This Month, Still Receiving TANF Individuals with open "empl" activity on OMEGA. Ad hoc report.

Participants Receiving Child Care Services - From Issuance Disbursement Summary (OMEGA report # RM703). Total number of active participants who show receipt of **Child Care**.

Number of Persons Closed on FAMIS Due to Employment - From FAMIS report #5549-RM-2.

Post TANF and Receiving Child Care - Persons no longer in receipt of TANF but still receiving child care. From Share Data Warehouse Child Care case count based on Child Care payments (SDW report WR00022WZ_CC).