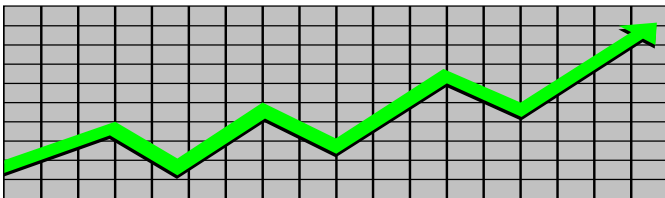


State of New Jersey
Department of Human Services
Division of Family Development

CURRENT PROGRAM STATISTICS



July 2020
Natasha Johnson, Assistant Commissioner

**DIVISION OF FAMILY DEVELOPMENT CURRENT PROGRAM STATISTICS
JULY 2020**

TABLE OF CONTENTS

HIGHLIGHTS:

WFNJ/TANF.....	ii
NJ SNAP.....	ii
EMERGENCY ASSISTANCE.....	ii
GENERAL ASSISTANCE.....	iii
GA Emergency Assistance.....	iii
GA Program.....	iii
CHILD SUPPORT SERVICES.....	iii
WORK FIRST NEW JERSEY (WFNJ).....	iii
STATISTICS- BY STATE & COUNTY.....	1
Table 1: WFNJ/TANF Families & Persons (NJ Statewide) July 2018 to 2020.....	1
Table 2: WFNJ/TANF Families (by County)- July 2020.....	2
Table 2B: WFNJ/TANF Persons, Adults, & Children (by County)- July 2020.....	3
Table 3: TANF Work Participation Rates Over 12 Month Period (by County)-July 2020.....	4
Table 4: TANF Work Participation Rates Over 12 Month Period (NJ Statewide) July 2020.....	5
Table 5: NJ SNAP Households/Persons (NJ Statewide) July 2018 to 2020.....	6
Table 6: NJ SNAP Recipient Trends (NJ Statewide) July 2018 to 2020.....	7
Table 7: NJ SNAP Households/Persons (by County)- July 2020.....	8
Table 8: Emergency Assistance Program (NJ Statewide) July 2018 to 2020.....	9
Table 9: Emergency Assistance Program (by County)- July 2020.....	10
Table 10: General Assistance Program (NJ Statewide) July 2018 to 2020.....	11
Table 11: General Assistance Program (by County)- July 2020	12
Table 12: Child Support Services Distributions (NJ Statewide) FFY 2020.....	13
Table 13: Child Support Services Paternities Established- July 2020.....	14
Table 14: Child Support Services Cases With Orders- July 2020.....	15
Table 15: Child Support Services Collections On Current Support- July 2020.....	16
Table 16: Child Support Services Cases With Payments On Arrears-July 2020.....	17
Table 17: WFNJ Statistical Summary- July 2020.....	18
ACRONYMS.....	19
EXPLANATORY NOTES.....	20
WFNJ Statistical Summary (Table 17).....	20

DIVISION OF FAMILY DEVELOPMENT CURRENT PROGRAM STATISTICS
JULY 2020

Each month the Division of Family Development publishes its program statistics for: WFNJ/TANF, NJ SNAP, Emergency Assistance, General Assistance, and Child Support Services. When possible, information is provided separately for children and adults. Many tables also provide trend data with information broken down by county for readers to consider. This report is compiled and prepared by The Bureau of Research & Reporting.

WFNJ/TANF

- As of the end of July, the TANF caseload had increased by 1,506 cases, from 10,594 in July 2019 to 12,100 in July 2020, an increase of 14.2%.
- The counties with caseloads that increased the most since July 2019 were Somerset (33.7%), Hudson (47.5%) and Hunterdon (112.5%).
- The counties with caseloads that decreased the most since July 2019 were Essex (-1.3%) and Sussex (-2.6%).
- Of the WFNJ/TANF cases, 3,686 or 30.5% were child-only in July 2020.
- The counties with the most child-only cases were Camden (587), Hudson (441) and Essex (420).
- Hudson (5,237), Essex (4,482), Camden (3,845), Passaic (2,987) and Atlantic (1,972) counties had the greatest number of persons receiving TANF in July 2020.

NJ SNAP (formerly FOOD STAMPS)

- In July 2020, there were 376,133 households receiving NJ SNAP benefits. The number of NJ SNAP households increased by 32,280 or 9.4%, since July 2019.
- There were 734,818 persons receiving NJ SNAP benefits as of July 2020, an increase of 55,332 or 8.1% since July 2019.
- The counties having the highest caseload increase since July 2019 are Somerset (17.5%), Warren (18.8%) and Hudson (22.0%).

EMERGENCY ASSISTANCE

- There were 1,557 TANF families receiving Emergency Assistance (EA) in July 2020, an increase of 46 or 3.0% since July 2019.
- In July 2020, EA payments were made for 559 SSI recipients.

DIVISION OF FAMILY DEVELOPMENT CURRENT PROGRAM STATISTICS JULY 2020

- There were 2,161 GA cases with Emergency Assistance payments in July 2020, an increase of 167 or 8.4% since July 2019.
- The counties that showed the highest percent increase in Emergency Assistance payments were Gloucester (57.6%), Monmouth (109.8%) and Somerset (120.0%).
- The counties that showed the highest percent decrease in Emergency Assistance payments were Morris (-23.4%), Essex (-24.4%) and Sussex (-54.8%).

GENERAL ASSISTANCE

- The total numbers of cases receiving GA has increased from 10,127 to 13,514 since July 2019, an increase of 33.4%.
- There were 7,994 Employable GA and 3,944 Unemployable GA cases in July 2020.
- The counties that showed a percent increase for GA cases were Cape May (78.7%), Hudson (94.4%) and Salem (122.0%) since July 2019.
- The counties that showed the highest percent decrease for GA cases since July 2019 were Morris (-1.0%), Hunterdon (-2.8%) Warren (-43.8%).
- In July 2020, GA cases showed a 2.1% increase since June 2020.

CHILD SUPPORT SERVICES (Quarterly Report)

- The total collection for the Child Support Services Program was about \$359 million from April 2020 to June 2020, an increase of 11.6 percent over the same period for FFY 2019.
- Total distributions increased 10.9% from June 2019.

WORK FIRST NEW JERSEY (WFNJ)

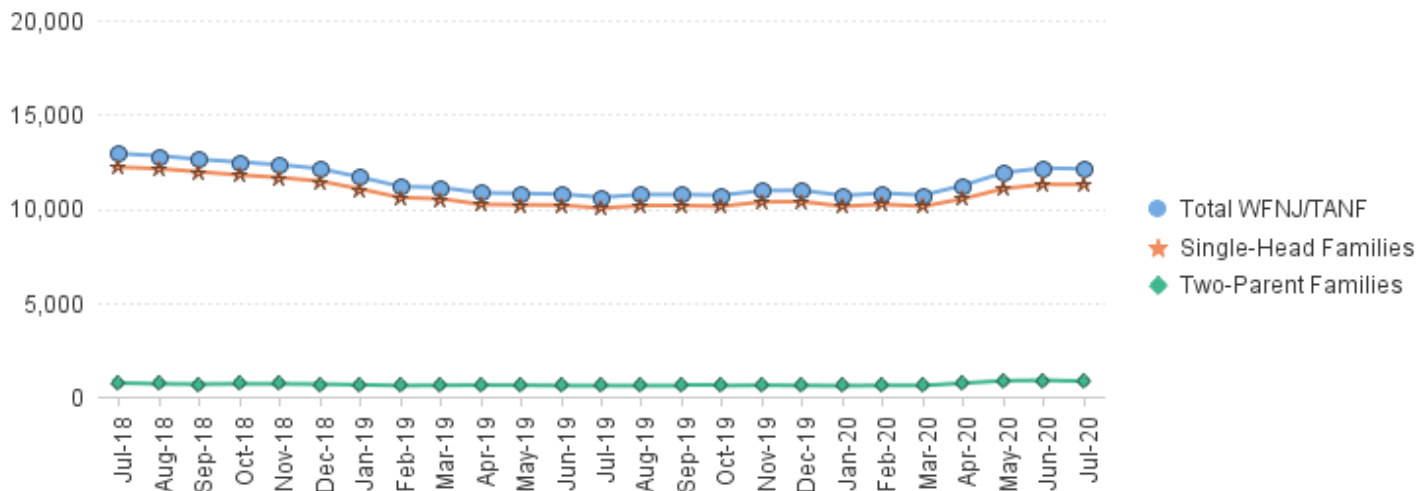
- During the report month of July 2020, there were 394 families in which at least one member was employed and an additional 69 families whose WFNJ assistance cases were closed due to employment - related earnings.
- The three counties with the greatest number of employed active WFNJ recipients were: Camden (56), Essex (51) and Hudson (51).
- There were 769 former TANF cases receiving post-TANF support in the form of child care assistance.

TABLE 1: WFNJ/TANF PROGRAM

STATEWIDE NUMBER OF APPLICATIONS AND TERMINATIONS DURING JULY 2020
NUMBER OF ELIGIBLE FAMILIES & PERSONS RECEIVING WFNJ/TANF FOR JULY 2020

JULY 2018 THROUGH JULY 2020												
		Cases Added	Cases Closed	Child-Only Cases ‡	Total Single-Head Families	2-Parent Families	Total WFNJ/TANF Families	%CHNG (1 Yr.)	Total Persons	%CHNG (1 Yr.)	Adults	Children
2018	JUL	1,111	1,517	4,389	12,192	723	12,915	-18.6%	32,023	-19.6%	9,249	22,774
	AUG	1,241	1,440	4,349	12,114	681	12,795	-18.8%	32,848	-17.2%	9,127	23,721
	SEP	1,341	1,600	4,287	11,944	665	12,609	-19.2%	31,154	-20.7%	8,987	22,167
	OCT	1,318	1,455	4,222	11,778	683	12,461	-19.5%	31,066	-20.2%	8,922	22,144
	NOV	1,191	1,381	4,180	11,645	681	12,326	-21.4%	30,734	-22.3%	8,827	21,907
	DEC	929	1,194	4,128	11,449	664	12,113	-22.0%	30,318	-22.7%	8,649	21,669
2018	Average	1,188	1,515	4,441	12,531	781	13,312		33,375		9,652	23,724
2019	JAN	967	1,444	4,093	11,034	628	11,662	-22.8%	29,021	-24.1%	8,197	20,824
	FEB	791	1,408	3,913	10,577	589	11,166	-23.0%	27,815	-24.1%	7,842	19,973
	MAR	989	1,340	3,986	10,516	597	11,113	-22.3%	27,603	-23.2%	7,724	19,879
	APR	998	1,271	3,906	10,216	614	10,830	-21.5%	26,968	-22.0%	7,538	19,430
	MAY	1,084	1,174	3,830	10,191	606	10,797	-20.1%	26,865	-20.5%	7,573	19,292
	JUN	1,024	1,135	3,790	10,175	588	10,763	-19.3%	26,674	-19.7%	7,561	19,113
	JUL	1,040	1,231	3,710	10,014	580	10,594	-18.0%	26,323	-17.8%	7,464	18,859
	AUG	1,209	1,135	3,723	10,158	582	10,740	-16.1%	26,735	-18.6%	7,599	19,136
	SEP	1,055	1,048	3,679	10,153	586	10,739	-14.8%	26,803	-14.0%	7,646	19,157
	OCT	1,137	1,253	3,556	10,120	586	10,706	-14.1%	26,933	-13.3%	7,736	19,197
	NOV	1,181	1,159	3,664	10,348	605	10,953	-11.1%	27,644	-10.1%	7,894	19,750
	DEC	1,053	1,042	3,689	10,364	593	10,957	-9.5%	27,766	-8.4%	7,861	19,905
2019	Average	1,044	1,220	3,795	10,322	596	10,918		27,263		7,720	19,543
2020	JAN	921	1,183	3,646	10,113	576	10,689	-8.3%	27,129	-6.5%	7,619	19,510
	FEB	1,066	1,007	3,669	10,222	596	10,818	-3.1%	27,517	-1.1%	7,745	19,772
	MAR	915	1,024	3,612	10,113	592	10,705	-3.7%	27,196	-1.5%	7,685	19,511
	APR	1,179	712	3,621	10,519	716	11,235	3.7%	28,765	6.7%	8,330	20,435
	MAY	832	232	3,696	11,057	845	11,902	10.2%	30,734	14.4%	9,051	21,683
	JUN	539	278	3,722	11,281	866	12,147	12.9%	31,370	17.6%	9,291	22,079
	JUL	458	526	3,686	11,274	826	12,100	14.2%	31,216	18.6%	9,240	21,976
2020	AVG to date	844	709	3,665	10,654	717	11,371		29,132		8,423	20,709

NJ STATEWIDE
Eligible Families Receiving WFNJ/TANF
JULY 2018 THROUGH JULY 2020



Data is derived from NJ MMIS Shared Data Warehouse Issuance files.

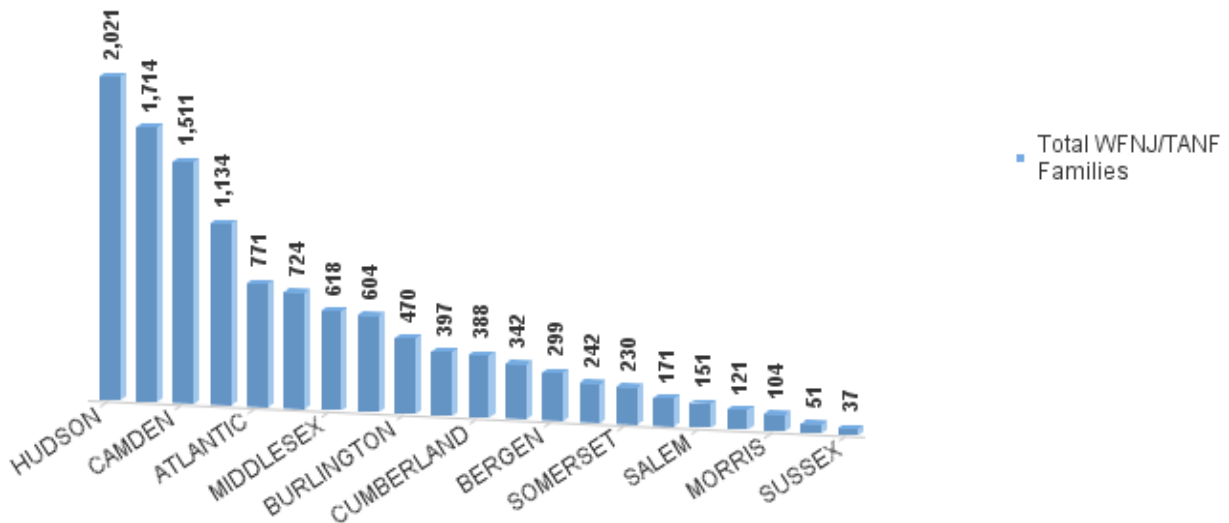
Effective July 2013 this data query source was converted to the SDW

‡ Child-only cases are defined as families in which no eligible adult receives TANF program benefits, yet the family continues to be headed by at least one of the biological parents, or grandparents, or other appropriate adult.

TABLE 2:
WFNJ/TANF **NUMBER OF APPLICATIONS AND TERMINATIONS BY COUNTY DURING JULY 2020**
PROGARM **NUMBER OF ELIGIBLE FAMILIES RECEIVING WFNJ/TANF FOR JULY 2020**

County	Cases Added	Cases Closed **	Child-Only	Total		Total		%CHNG (3 Mon)	%CHNG (1 Yr.)
			Cases ‡	1-Adult Cases	Single-Head Families	2-Parent Families	WFNJ/TANF Families		
ATLANTIC	19	27	289	437	726	45	771	0.0%	14.9%
BERGEN	14	31	66	210	276	23	299	-1.3%	19.6%
BURLINGTON	9	15	145	296	441	29	470	0.9%	17.2%
CAMDEN	30	46	587	853	1,440	71	1,511	0.7%	7.2%
CAPE MAY	7	2	40	77	117	4	121	6.1%	22.2%
CUMBERLAND	16	27	158	205	363	25	388	-5.1%	1.6%
ESSEX	32	18	420	1,204	1,624	90	1,714	1.7%	-1.3% *
GLOUCESTER	13	38	137	192	329	13	342	-7.3%	2.7%
HUDSON	119	24	441	1,360	1,801	220	2,021	10.4%	47.5% Δ
HUNTERDON	3	2	11	33	44	7	51	13.3%	112.5% Δ
MERCER	26	58	239	455	694	30	724	-1.8%	11.4%
MIDDLESEX	38	80	234	351	585	33	618	-3.6%	30.1%
MONMOUTH	8	22	93	141	234	8	242	-2.0%	2.5%
MORRIS	11	13	25	59	84	20	104	-3.7%	8.3%
OCEAN	18	19	97	273	370	27	397	0.8%	19.9%
PASSAIC	30	35	368	713	1,081	53	1,134	2.6%	1.0% *
SALEM	7	12	50	89	139	12	151	-10.7%	13.5%
SOMERSET	5	19	67	147	214	16	230	-6.1%	33.7% Δ
SUSSEX	3	4	11	18	29	8	37	-7.5%	-2.6% *
UNION	36	15	174	356	530	74	604	9.0%	15.3%
WARREN	14	19	34	119	153	18	171	2.4%	21.3%
NJ Total	458	526	3,686	7,588	11,274	826	12,100	1.7%	14.2%

Total WFNJ/TANF Families
JULY 2020
By County



Data is derived from NJ MMIS Shared Data Warehouse Issuance files.
Effective July 2013 this data query source was converted to the SDW

‡ Child-only cases are defined as families in which no eligible adult receives TANF program benefits, yet the family continues to be headed by at least one of the biological parents, or grandparents, or other appropriate adult

** 'Cases closed' include cases that received a benefit in the prior month, but did not receive any TANF benefit for the report month.

Δ=higher caseload % change

*=lower caseload % change

TABLE 2B :
WFNJ/TANF
PROGARM

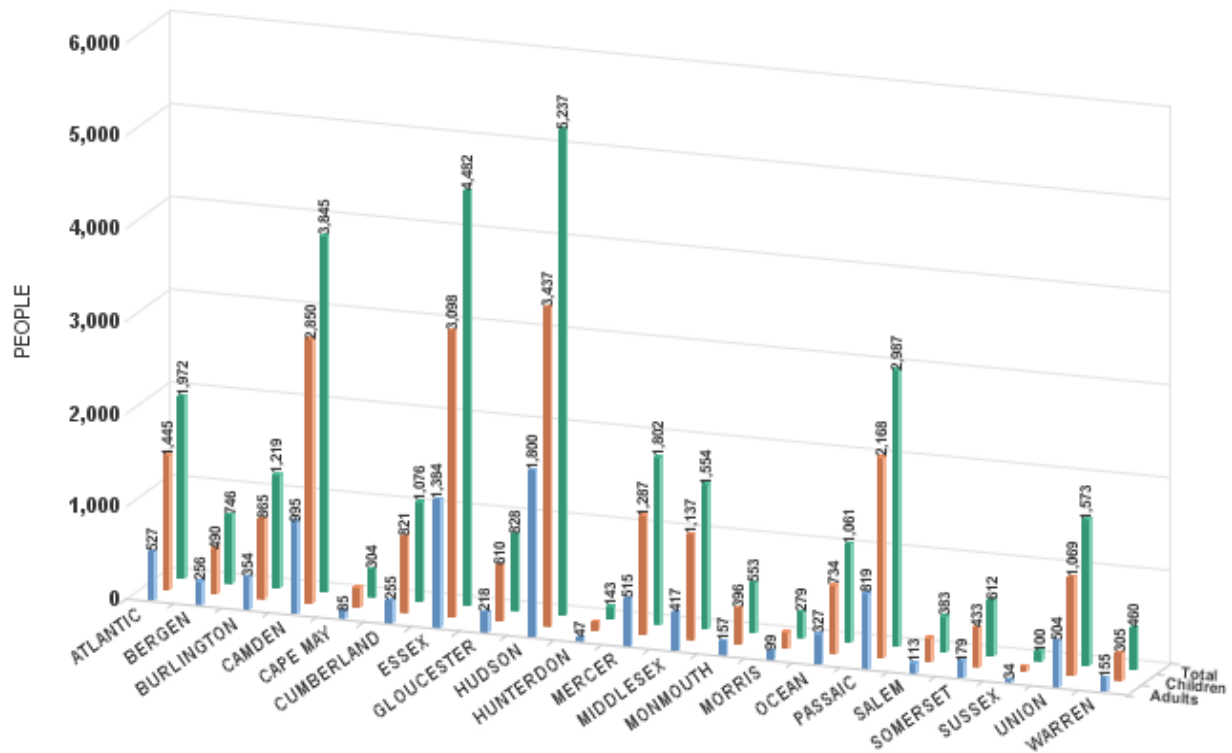
NUMBER OF PARTICIPATING PERSONS, ADULTS, AND CHILDREN
BY COUNTY FOR JULY 2020

PERSONS

County	Adults	Children	Child/Adult Ratio	Total Persons	% Chng (1 Yr)	Persons Per Case
ATLANTIC	527	1,445	2.74	1,972	19.2%	2.56
BERGEN	256	490	1.91	746	20.3%	2.49
BURLINGTON	354	865	2.44	1,219	29.0%	2.59
CAMDEN	995	2,850	2.86	3,845	10.6%	2.54
CAPE MAY	85	219	2.58	304	27.2%	2.51
CUMBERLAND	255	821	3.22	1,076	8.6%	2.77
ESSEX	1,384	3,098	2.24	4,482	2.8% *	2.61
GLOUCESTER	218	610	2.80	828	4.4%	2.42
HUDSON	1,800	3,437	1.91	5,237	54.0% Δ	2.59
HUNTERDON	47	96	2.04	143	120.0% Δ	2.80
MERCER	515	1,287	2.50	1,802	16.5%	2.49
MIDDLESEX	417	1,137	2.73	1,554	34.2%	2.51
MONMOUTH	157	396	2.52	553	0.7% *	2.29
MORRIS	99	180	1.82	279	16.3%	2.68
OCEAN	327	734	2.24	1,061	25.3%	2.67
PASSAIC	819	2,168	2.65	2,987	2.9% *	2.63
SALEM	113	270	2.39	383	13.6%	2.54
SOMERSET	179	433	2.42	612	48.5% Δ	2.66
SUSSEX	34	66	1.94	100	7.5%	2.70
UNION	504	1,069	2.12	1,573	18.7%	2.60
WARREN	155	305	1.97	460	25.0%	2.69
NJ Total	9,240	21,976	2.38	31,216	18.6%	2.58

Δ=higher caseload % change

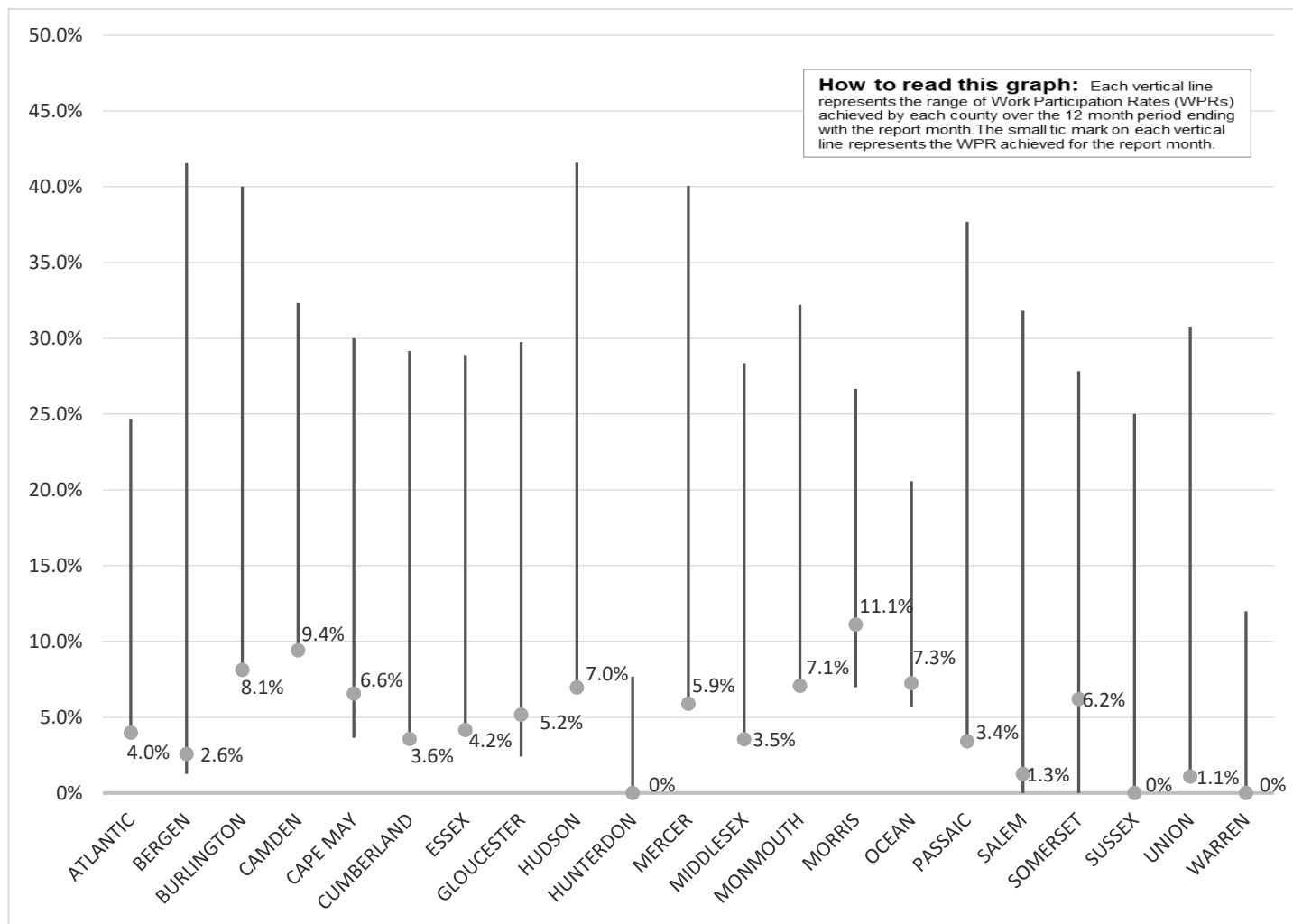
*=lower caseload % change



Data is derived from NJ MMIS Shared Data Warehouse Issuance files.
 Effective July 2013 this data query source was converted to the SDW

TABLE 3 :

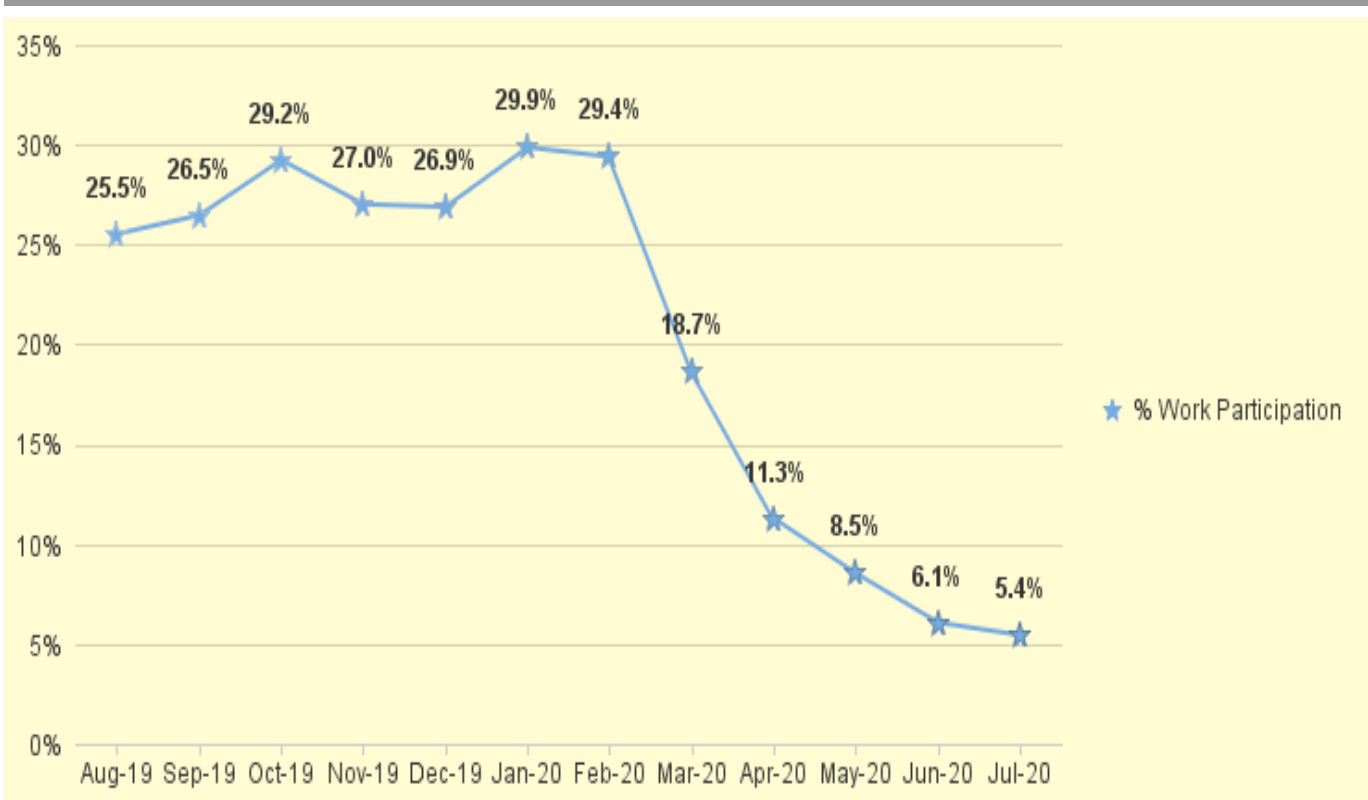
**Work Participation Rates Achieved Over 12 Month Period
Ending with JULY 2020**



Data is derived from NJ MMIS Shared Data Warehouse Issuance files.
Effective July 2013 this data query source was converted to the SDW

TABLE 4 :

**WFNJ/TANF Work Participation Rates
for 12-Month Period Ending with JULY 2020 Statewide**



* The Work Participation rate measures the number of countable Temporary Assistance for Needs Families (TANF) participants based on federal formula. The reported rate is considered to be preliminary until officially calculated by the federal government soon after the close of each federal fiscal year.

TABLE 5 :

NJ SNAP

NUMBER OF PARTICIPATING HOUSEHOLDS, PERSONS, ADULTS

(FOOD STAMPS)

AND CHILDREN FOR JULY 2020 (STATEWIDE)

JULY 2018 THROUGH JULY 2020

		HOUSEHOLDS				PERSONS				Age 60+	People with a disability
		WFNJ/ TANF	Other low income	Total	% CHNG (1 YR)	Adults	Children	TOTAL	% CHNG (1 YR)		
2018	JUL	12,142	355,160	367,302	-6.3%	385,535	346,628	732,163	-6.3%	129,767	211,396
	AUG	12,162	354,922	367,084	-6.1%	385,645	345,658	731,303	-6.2%	129,230	210,919
	SEP	11,978	355,023	367,001	-6.0%	386,047	344,801	730,848	-6.2%	128,684	210,278
	OCT	11,828	351,057	362,885	-5.8%	381,993	339,837	721,830	-5.8%	127,534	208,715
	NOV	11,524	349,288	360,812	-6.3%	380,136	336,835	716,971	-6.6%	126,941	208,324
	DEC	11,056	347,269	358,325	-7.3%	377,967	334,264	712,231	-7.7%	126,299	210,239
2018	Average	12,474	357,482	369,956		388,161	348,773	736,934		128,054	212,862
2019	JAN	11,080	347,492	358,572	-5.8%	378,698	333,780	712,478	-6.1%	125,563	208,860
	FEB	9,524	325,936	335,460	-11.3%	354,132	303,701	657,833	-12.7%	121,511	199,781
	MAR	10,469	341,314	351,783	-7.3%	372,223	325,898	698,121	-7.7%	123,658	205,933
	APR	10,136	336,819	346,955	-7.0%	367,367	319,361	686,728	-7.6%	122,716	204,624
	MAY	10,284	337,321	347,605	-6.4%	368,192	319,432	687,624	-7.2%	122,594	203,974
	JUN	10,149	336,301	346,450	-7.2%	367,279	317,566	684,845	-8.1%	122,060	203,512
	JUL	9,962	333,891	343,853	-6.4%	365,264	314,222	679,486	-7.2%	121,238	202,824
	AUG	10,570	336,384	346,954	-5.5%	368,890	317,373	686,263	-6.2%	121,200	203,620
	SEP	10,319	331,162	341,481	-7.0%	363,290	310,676	673,966	-7.8%	120,200	202,119
	OCT	10,242	328,140	338,382	-6.8%	360,298	305,917	666,215	-7.7%	119,254	200,853
	NOV	10,580	331,660	342,240	-5.1%	364,880	310,523	675,403	-5.8%	119,560	202,867
	DEC	10,445	330,157	340,602	-4.9%	362,992	308,279	671,271	-5.8%	119,046	205,081
2019	Average	10,313	334,715	345,028		366,125	315,561	681,686		121,550	203,671
2020	JAN	10,201	325,866	336,067	-6.3%	358,028	301,901	659,929	-7.4%	117,898	201,955
	FEB	10,245	326,468	336,713	0.4%	358,670	302,524	661,194	0.5%	117,775	201,863
	MAR	10,328	324,689	335,017	-4.8%	357,989	299,375	657,364	-5.8%	117,369	201,521
	APR	11,112	337,037	348,149	0.3%	373,744	309,095	682,839	-0.6%	118,173	204,375
	MAY	11,513	353,998	365,511	5.2%	394,281	323,636	717,917	4.4%	119,744	208,152
	JUN	11,522	358,302	369,824	6.7%	398,959	326,357	725,316	5.9%	120,137	209,224
	JUL	11,336	364,797	376,133	9.4%	405,652	329,166	734,818	8.1%	120,881	211,115
2020	AVG to date	10,894	341,594	352,488		378,189	313,151	691,340		831,977	1,438,205

This Table is based on those Households & Persons that recived SNAP issuances (benefits) during the month

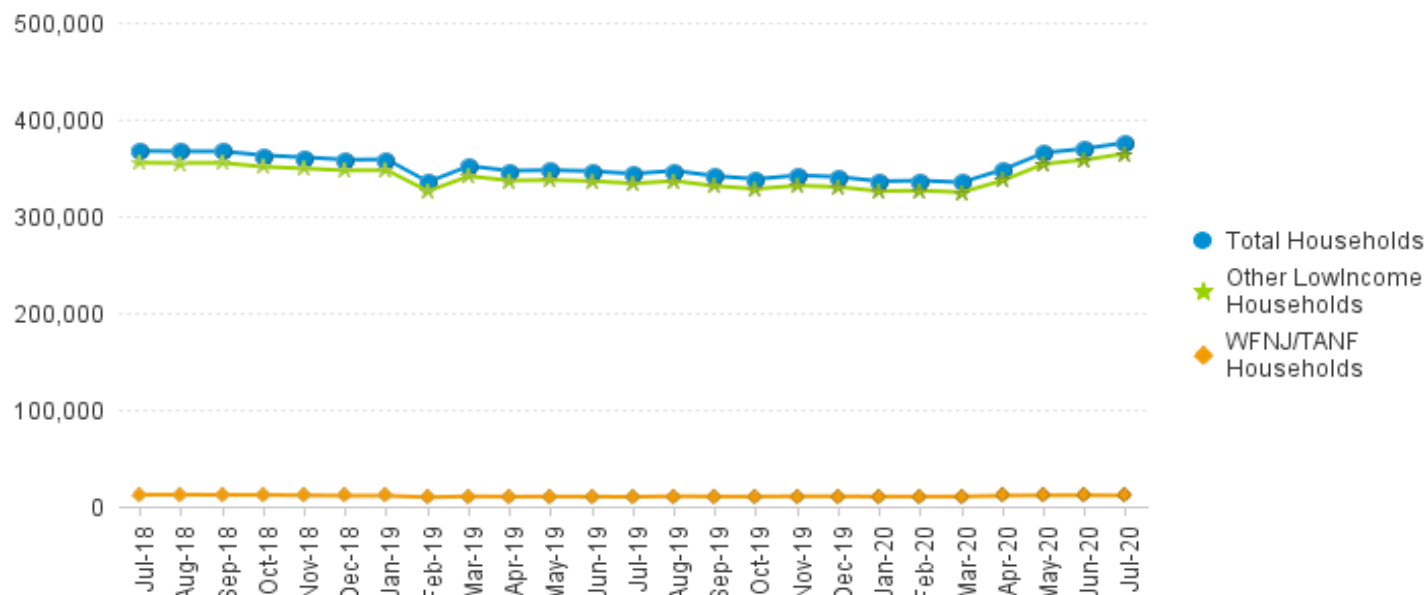
Data is derived from NJ MMIS Shared Data Warehouse.

Effective July 2013 this data query source was converted to the SDW.

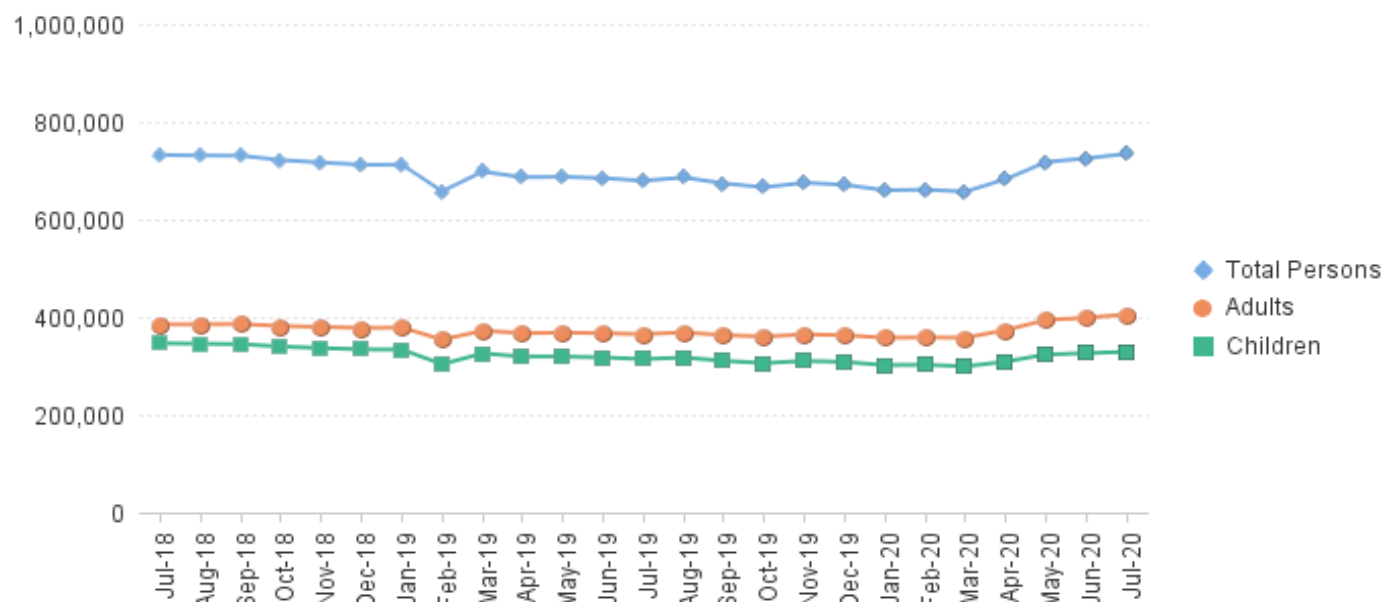
* Age 60+ and People with a disability columns are independent subsets of total persons. An individual might appear in both columns

TABLE 6: NJ SNAP (FOOD STAMPS)
TRENDS FOR PARTICIPATING HOUSEHOLDS & PERSONS
JULY 2018 THROUGH JULY 2020 (STATEWIDE)

Statewide NJ SNAP Households: JULY 2018 Through JULY 2020



Statewide NJ SNAP Persons: JULY 2018 Through JULY 2020



Data is derived from NJ MMIS Shared Data Warehouse Issuance files.

Effective July 2013 this data query source was converted to the SDW

TABLE 7 :

NJ SNAP

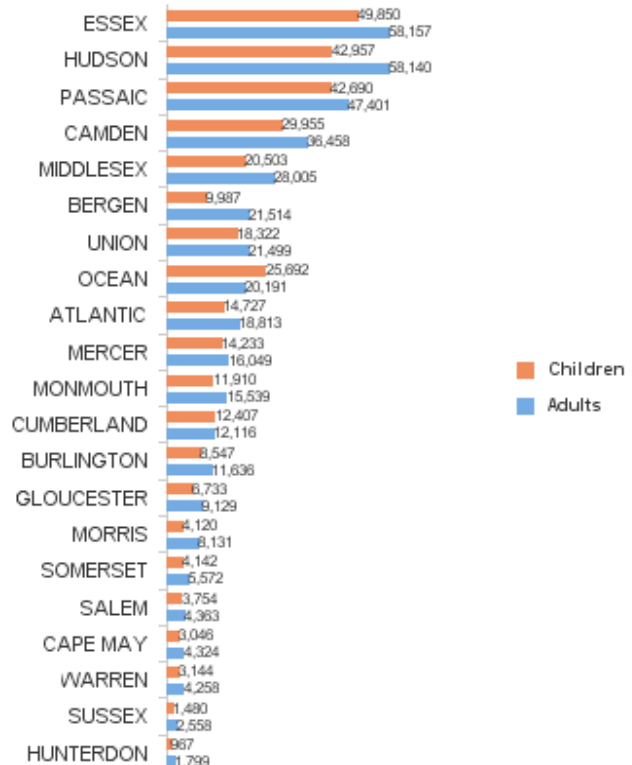
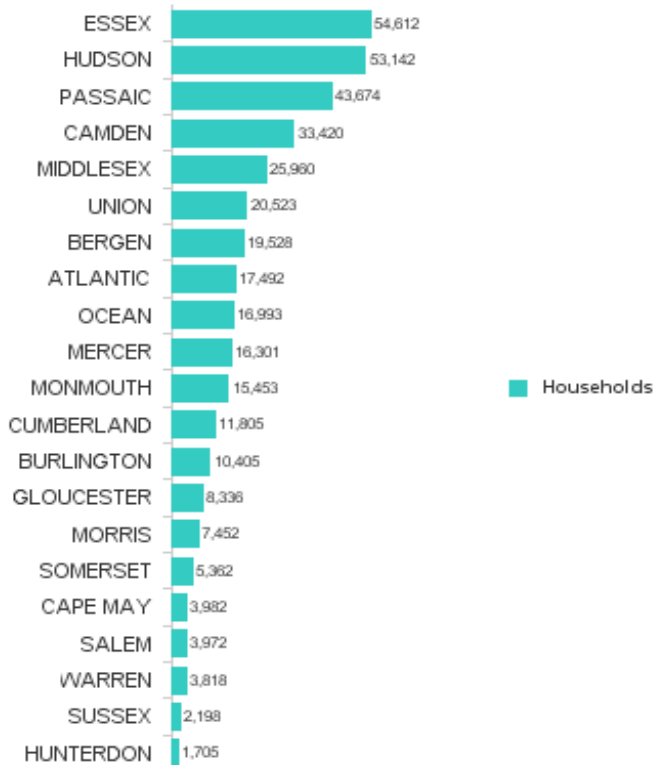
**NUMBER OF PARTICIPATING HOUSEHOLDS, PERSONS, ADULTS
AND CHILDREN BY COUNTY FOR JULY 2020**

County	HOUSEHOLDS				PERSONS				Age 60+	People with a disability
	WFNJ/ TANF	Other low income	TOTAL	% Chng (1 Yr)	Adults	Children	TOTAL	% Chng (1 Yr)		
ATLANTIC	661	16,831	17,492	9.3%	18,813	14,727	33,540	5.9%	4,711	9,637
BERGEN	282	19,246	19,528	5.0% *	21,514	9,987	31,501	4.1%	11,625	14,843
BURLINGTON	418	9,987	10,405	6.4%	11,636	8,547	20,183	5.7%	2,755	6,492
CAMDEN	1,364	32,056	33,420	13.2%	36,458	29,955	66,413	12.0%	7,705	18,136
CAPE MAY	104	3,878	3,982	15.5%	4,324	3,046	7,370	13.6%	1,001	2,301
CUMBERLAND	337	11,468	11,805	6.4%	12,116	12,407	24,523	5.6%	2,708	6,878
ESSEX	1,802	52,810	54,612	7.0%	58,157	49,850	108,007	5.6%	14,303	27,174
GLOUCESTER	291	8,045	8,336	2.3% *	9,129	6,733	15,862	-1.9% *	2,154	5,707
HUDSON	1,859	51,283	53,142	22.0% Δ	58,140	42,957	101,097	20.8% Δ	17,870	26,684
HUNTERDON	50	1,655	1,705	11.3%	1,799	967	2,766	14.1%	541	1,018
MERCER	725	15,576	16,301	14.2%	16,049	14,233	30,282	13.9%	4,069	9,689
MIDDLESEX	580	25,380	25,960	6.6%	28,005	20,503	48,508	6.0%	11,955	16,653
MONMOUTH	221	15,232	15,453	5.8%	15,539	11,910	27,449	4.0% *	5,325	9,351
MORRIS	110	7,342	7,452	5.5%	8,131	4,120	12,251	6.5%	3,955	5,102
OCEAN	379	16,614	16,993	6.4%	20,191	25,692	45,883	4.4%	5,064	9,906
PASSAIC	1,101	42,573	43,674	3.1% *	47,401	42,690	90,091	2.6% *	13,542	20,588
SALEM	130	3,842	3,972	10.1%	4,363	3,754	8,117	12.0%	838	2,311
SOMERSET	204	5,158	5,362	17.5% Δ	5,572	4,142	9,714	18.0% Δ	2,050	3,314
SUSSEX	38	2,160	2,198	12.9%	2,558	1,480	4,038	15.2%	715	1,582
UNION	531	19,992	20,523	7.0%	21,499	18,322	39,821	5.4%	7,022	11,421
WARREN	149	3,669	3,818	18.8% Δ	4,258	3,144	7,402	21.2% Δ	973	2,328
NJ TOTAL	11,336	364,797	376,133	9.4%	405,652	329,166	734,818	8.1%	120,881	211,115

Δ=higher caseload % change

*=lower caseload % change

**Total NJ SNAP Recipients
JULY 2020 by County**



Data is derived from NJ MMIS Shared Data Warehouse.

Effective July 2013 this data query source was converted to the SDW.

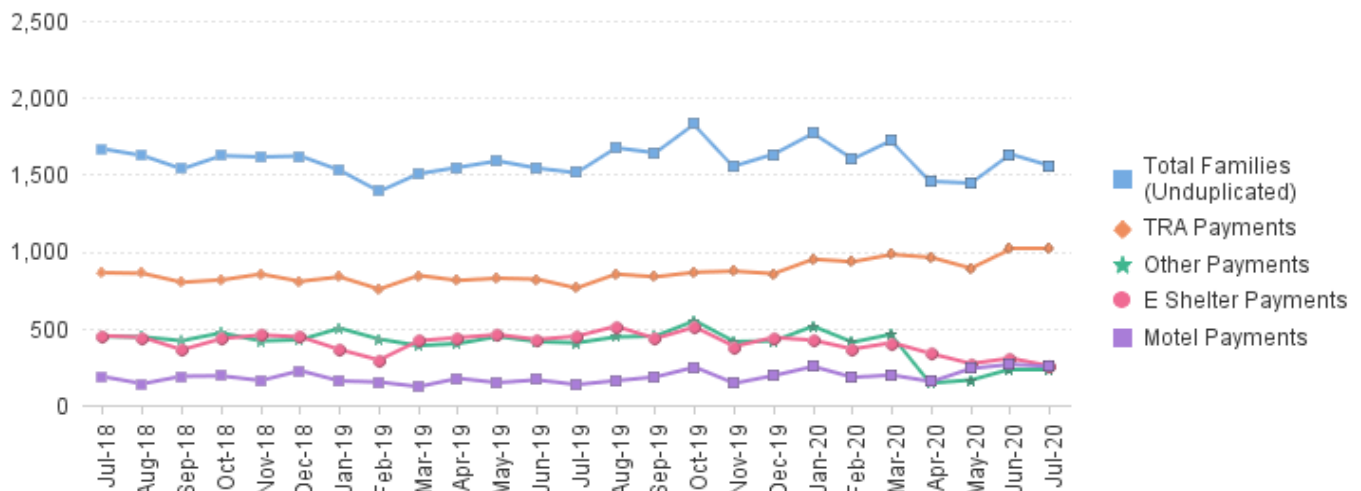
* Age 60+ and People with a disability columns are independent subsets of total persons. An individual might appear in both columns

TABLE 8 :

**EMERGENCY ASSISTANCE TOTAL NUMBER OF ELIGIBLE FAMILIES RECEIVING EMERGENCY ASSISTANCE PAYMENTS
JULY 2018 THROUGH JULY 2020 - STATEWIDE
(STATEWIDE)**

		Total WFNJ/EA Families (Undupl)	% CHNG (1 YR)	Temp Rent Asst. Payments (Undupl)	% CHNG (1 YR)	Motel Housing Payments (Undupl)	% CHNG (1 YR)	Shelter/Transitiona Housing Payments (Undupl)	% CHNG (1 YR)	Other WFNJ/EA Payments (Undupl)	% CHNG (1 YR)
2018	JUL	1,666	-12.1%	861	-23.7%	185	46.8%	451	-5.1%	447	18.3%
	AUG	1,623	-17.9%	857	-21.3%	139	20.9%	441	-18.2%	443	-6.9%
	SEP	1,536	-18.2%	799	-23.3%	188	52.8%	360	-25.0%	419	-17.5%
	OCT	1,622	-13.1%	814	-17.7%	190	66.7%	432	-19.4%	470	-7.8%
	NOV	1,614	-9.8%	852	-16.0%	160	16.8%	456	-1.9%	417	-4.8%
	DEC	1,620	-6.9%	805	-13.9%	224	73.6%	444	-8.3%	425	1.7%
2018 Average		1,687		888		166		466		436	
2019	JAN	1,527	-15.1%	834	-13.1%	157	-8.2%	361	-32.3%	500	15.7%
	FEB	1,390	-20.8%	754	-21.0%	150	-2.6%	293	-41.5%	429	2.9%
	MAR	1,505	-15.7%	843	-12.9%	120	-24.1%	419	-17.8%	387	-15.3%
	APR	1,546	-13.9%	811	-16.6%	174	14.5%	439	-11.5%	400	-9.7%
	MAY	1,588	-9.4%	825	-10.2%	146	0.0%	458	-7.1%	446	1.1%
	JUN	1,541	-8.1%	819	-7.7%	164	36.7%	427	-9.7%	413	-0.5%
	JUL	1,511	-9.3%	761	-11.6%	133	-28.1%	448	-0.7%	405	-9.4%
	AUG	1,673	3.1%	852	-0.6%	159	14.4%	513	16.3%	443	0.0%
	SEP	1,641	6.8%	834	4.4%	183	-2.7%	433	20.3%	449	7.2%
	OCT	1,830	12.8%	864	6.1%	247	30.0%	508	17.6%	549	16.8%
	NOV	1,555	-3.7%	871	2.2%	142	-11.3%	382	-16.2%	413	-1.0%
	DEC	1,632	0.7%	855	6.2%	192	-14.3%	440	-0.9%	417	-1.9%
2019 Average		1,578		827		164		427		438	
2020	JAN	1,767	15.7%	949	13.8%	251	59.9%	422	16.9%	513	2.6%
	FEB	1,600	15.1%	932	23.6%	181	20.7%	365	24.6%	409	-4.7%
	MAR	1,723	14.5%	980	16.3%	195	62.5%	406	-3.1%	462	19.4%
	APR	1,455	-5.9%	960	18.4%	153	-12.1%	334	-23.9%	144	-64.0%
	MAY	1,444	-9.1%	890	7.9%	238	63.0%	270	-41.0%	163	-63.5%
	JUN	1,632	5.9%	1,014	23.8%	265	61.6%	305	-28.6%	234	-43.3%
	JUL	1,557	3.0%	1,014	33.2%	251	88.7%	254	-43.3%	234	-42.2%
2020 AVG to date		1,597		963		219		337		308	

**NJ STATEWIDE
Families Receiving Emergency Assistance
JULY 2018 THROUGH JULY 2020**



WFNJ/EA data is derived from NJ MMIS Shared Data Warehouse.
Effective July 2013 this data query source was converted to the SDW.

* Effective Feb '11 Transitional Housing Payments were removed from 'Other EA Payments' and added to 'Shelter Payments'.

TABLE 9 :
EMERGENCY ASSISTANCE (BY COUNTY) **TOTAL NUMBER OF ELIGIBLE FAMILIES RECEIVING EMERGENCY ASSISTANCE PAYMENTS BY COUNTY (UNDUPLICATED CASES) FOR JULY 2020**

County	TOTAL WFNJ/EA Families (Undupl)	% CHNG From JUL 19	Temp Rent Asst. Payments (Undupl)	Motel Housing Payments (Undupl)	Shelter/Transitional Housing Payments (Undupl)	Other WFNJ/EA Payments (Undupl)	SSI Recipients Receiving EA **
ATLANTIC	90	12.5%	79	6	0	15	69
BERGEN	45	-16.7%	38	1	0	7	16
BURLINGTON	86	45.8%	5	29	56	3	54
CAMDEN	54	-8.5%	21	19	9	11	43
CAPE MAY	27	92.9% Δ	14	14	0	1	13
CUMBERLAND	4	33.3%	1	0	3	0	0
ESSEX	151	-39.1%	68	0	78	10	1
GLOUCESTER	20	-13.0%	8	5	4	6	6
HUDSON	172	-21.1%	136	12	21	42	44
HUNTERDON	9	0%	5	0	2	2	7
MERCER	107	25.9%	68	24	20	17	58
MIDDLESEX	140	105.9% Δ	88	41	12	38	27
MONMOUTH	13	-58.1% *	2	7	1	3	17
MORRIS	21	-25.0%	11	6	0	5	8
OCEAN	121	61.3%	103	20	0	23	22
PASSAIC	260	-3.7%	237	6	10	13	9
SALEM	2	-60.0% *	2	0	0	1	3
SOMERSET	75	33.9%	57	9	6	13	60
SUSSEX	3	-62.5% *	1	0	2	1	2
UNION	124	18.1%	50	41	28	22	95
WARREN	33	153.8% Δ	20	11	2	1	5
NJ Total	1,557	3.0%	1,014	251	254	234	559

Δ=higher caseload % change

*=lower caseload % change

** SSI-EA includes pay codes 22 and 24, data is derived from NJ Division of Family Development FAMIS Report #FM430-03A

WFNJ/EA data is derived from NJ MMIS Shared Data Warehouse.

Effective July 2013 this data query source was converted to the SDW.

**Number WFNJ Families Receiving EA by County
JULY 2020**

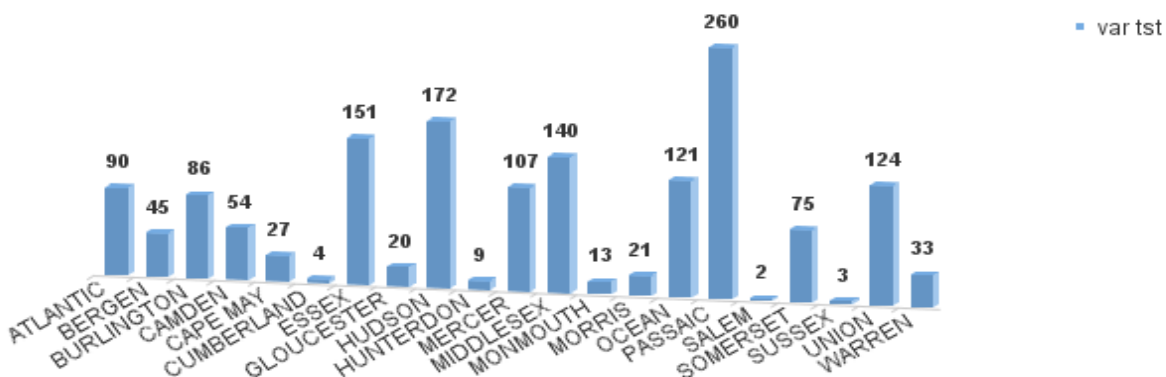
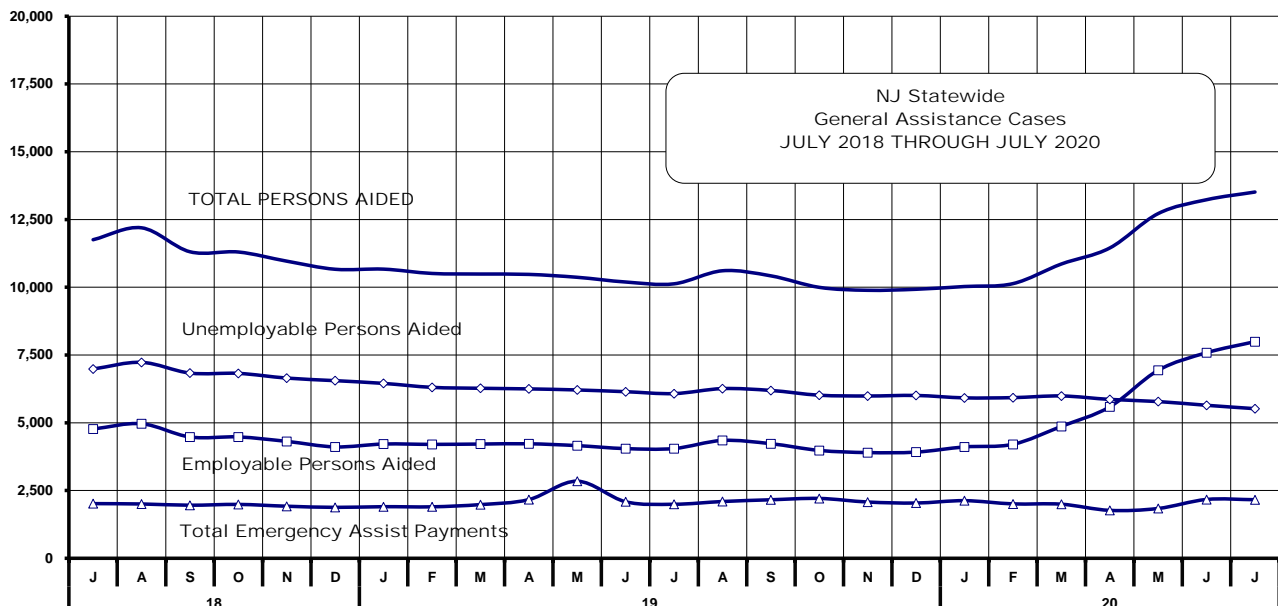


Table 10
GENERAL
ASSISTANCE
PROGRAM

**NUMBER OF EMPLOYABLE AND UNEMPLOYABLE RECIPIENTS
AND EMERGENCY ASSISTANCE PAYMENTS FOR JULY 2020 - STATEWIDE**

JULY 2018 THROUGH JULY 2020

	Total Cases						Emergency Assistance Cases			
	Employable	% Chng (1 Yr)	Unemployable	% Chng (1 Yr)	Total	% Chng (1 Yr)	Temporary Rental Assistance	Other GA-EA	Total	% Chng (1 Yr)
2018 JUL	4,770	-15.9%	6,984	-14.6%	11,754	-15.1%	951	1,066	2,017	-7.4%
AUG	4,964	-13.7%	7,230	-11.0%	12,194	-12.1%	882	1,122	2,004	-14.2%
SEP	4,476	-18.0%	6,834	-13.5%	11,310	-15.3%	904	1,054	1,958	-8.2%
OCT	4,478	-18.0%	6,823	-13.4%	11,301	-15.3%	909	1,079	1,988	-12.2%
NOV	4,314	-19.8%	6,649	-13.0%	10,963	-15.9%	923	998	1,921	-3.5%
DEC	4,110	-26.7%	6,554	-12.9%	10,664	-18.8%	872	1,007	1,879	-10.7%
2018 AVERAGE	4,839		7,036		11,875		950	1,081	2,031	
2019 JAN	4,216	-22.1%	6,453	-13.1%	10,669	-16.9%	886	1,018	1,904	-9.2%
FEB	4,203	-18.5%	6,307	-13.8%	10,510	-15.7%	876	1,023	1,899	-8.2%
MAR	4,215	-19.2%	6,273	-13.5%	10,488	-15.9%	904	1,077	1,981	-3.4%
APR	4,225	-19.0%	6,250	-12.9%	10,475	-15.5%	921	1,244	2,165	-2.3%
MAY	4,157	-17.9%	6,211	-12.9%	10,368	-15.0%	922	1,923	2,845	31.8%
JUN	4,047	-17.3%	6,147	-12.8%	10,194	-14.7%	920	1,166	2,086	3.5%
JUL	4,050	-15.1%	6,077	-13.0%	10,127	-13.8%	912	1,082	1,994	-1.1%
AUG	4,348	-12.4%	6,261	-13.4%	10,609	-13.0%	885	1,210	2,095	4.5%
SEP	4,228	-5.5%	6,193	-9.4%	10,421	-7.9%	884	1,275	2,159	10.3%
OCT	3,980	-11.1%	6,017	-11.8%	9,997	-11.5%	890	1,319	2,209	11.1%
NOV	3,900	-9.6%	5,988	-9.9%	9,888	-9.8%	878	1,198	2,076	8.1%
DEC	3,918	-4.7%	6,008	-8.3%	9,925	-6.9%	900	1,139	2,039	8.5%
2019 AVERAGE	4,124		6,182		10,306		898	1,223	2,121	
2020 JAN	4,109	-2.5%	5,919	-8.3%	10,028	-6.0%	910	1,216	2,126	11.7%
FEB	4,206	0.1%	5,928	-6.0%	10,134	-3.6%	875	1,132	2,007	5.7%
MAR	4,868	15.5%	5,990	-4.5%	10,858	3.5%	919	1,077	1,996	0.8%
APR	5,587	32.2%	5,862	-6.2%	11,449	9.3%	913	855	1,768	-18.3%
MAY	6,936	66.9%	5,783	-6.9%	12,719	22.7%	929	909	1,838	-35.4%
JUN	7,585	87.4%	5,645	-8.2%	13,230	29.8%	916	1,255	2,171	4.1%
JUL	7,994	97.4%	5,520	-9.2%	13,514	33.4%	905	1,256	2,161	8.4%
2020 AVG to date	5,898		5,807		11,705		910	1,100	2,010	



Source: NJ Division of Family Development, GA Fiscal Unit

TABLE 11
GENERAL
ASSISTANCE
PROGRAM

**EMPLOYABLE AND UNEMPLOYABLE CASES
AND EMERGENCY ASSISTANCE CASES RECEIVING PAYMENTS BY COUNTY**

JULY 2020

County	Total Cases						Emergency Assistance Cases			
	Employable	% Chng (From Jul 19)	Unemployable	% Chng (From Jul 19)	Total	% Chng (From Jul 19)	Temporary Rental Assist.	Other GA-EA	Total	% Chng (From Jul 19)
ATLANTIC	695	82.9%	266	-2.6%	961	47.2%	92	43	135	7.1%
BERGEN	400	84.3%	318	-24.5%	718	12.5%	101	50	151	5.6%
BURLINGTON	379	121.6%	345	-0.9%	724	39.5%	18	141	159	27.2%
CAMDEN	907	117.5%	657	-2.2%	1,564	43.6%	50	123	173	20.1%
CAPE MAY	160	196.3%	67	-8.2%	227	78.7% Δ	25	39	64	30.6%
CUMBERLAND	278	55.3%	173	-20.3%	451	13.9%	1	10	11	120.0% Δ
ESSEX	891	23.8%	443	-8.5%	1,334	10.8%	32	89	121	-24.4% *
GLOUCESTER	282	145.2%	188	-7.8%	470	47.3%	10	94	104	57.6% Δ
HUDSON	1,378	268.4%	603	-6.5%	1,981	94.4% Δ	72	48	120	-3.2%
HUNTERDON	92	-9.8%	79	6.8%	171	-2.8% *	13	21	34	-22.7%
MERCER	287	76.1%	376	-10.9%	663	13.3%	49	43	92	2.2%
MIDDLESEX	370	113.9%	353	-11.8%	723	26.2%	87	68	155	-12.9%
MONMOUTH	189	114.8%	202	3.1%	391	37.7%	0	86	86	109.8% Δ
MORRIS	136	16.2%	170	-11.5%	306	-1.0% *	60	25	85	-23.4% *
OCEAN	350	77.7%	277	-8.9%	627	25.1%	81	72	153	24.4%
PASSAIC	346	195.7%	457	-19.4%	803	17.4%	70	33	103	-16.9%
SALEM	134	346.7%	68	11.5%	202	122.0% Δ	1	3	4	33.3%
SOMERSET	175	130.3%	71	-1.4%	246	66.2%	51	41	92	35.3%
SUSSEX	65	51.2%	47	-4.1%	112	21.7%	0	14	14	-54.8% *
UNION	463	127.0%	251	-14.0%	714	44.0%	65	169	234	30.7%
WARREN	17	-85.0%	109	-1.8%	126	-43.8% *	27	44	71	18.3%
NJ TOTAL	7,994	97.4%	5,520	-9.2%	13,514	33.4%	905	1,256	2,161	8.4%

Δ = ↑ Caseload %

* = ↓ Caseload %

Source: NJ Division of Family Development, GA Fiscal Unit

TABLE 12
OFFICE OF CHILD
SUPPORT
SERVICES

OFFICE OF CHILD SUPPORT SERVICES

Quarterly Performance Report

State Summary

TITLE IV-D SOURCE COLLECTION REPORT

Comparison of Quarter-3 (FFY 19 vs. FFY 20)

COLLECTION SOURCE	TOTAL 4/1/2019 - 6/31/2019	% OF TOTAL COLLECTIONS	TOTAL 4/1/2020 - 6/31/2020	% OF TOTAL COLLECTIONS	DOLLAR CHANGE	% CHANGE
FEDERAL TAX	\$ 15,754,607	4.89%	\$ 79,593,959	22.14%	\$ 63,839,352	405.21%
STATE TAX	\$ 3,352,300	1.04%	\$ 3,088,124	0.86%	\$ (264,176)	-7.88%
UIB	\$ 7,092,732	2.20%	\$ 27,887,771	7.76%	\$ 20,795,039	293.19%
INC WITHHOLD	\$ 212,758,089	66.03%	\$ 190,452,576	52.97%	\$ (22,305,513)	-10.48%
FROM OTHER STATES	\$ 12,661,044	3.93%	\$ 11,621,633	3.23%	\$ (1,039,411)	-8.21%
ADMIN ENFORCEMENT	\$ 5,783,026	1.79%	\$ 1,196,433	0.33%	\$ (4,586,593)	-79.31%
OTHER	\$ 64,828,388	20.12%	\$ 45,683,671	12.71%	\$ (19,144,717)	-29.53%
TOTAL COLLECTIONS*	\$ 322,230,186	100%	\$ 359,524,167	100%	\$ 37,293,981	11.57%
DISBURSED COLLECTIONS**	\$ 280,805,492		\$ 311,551,004		\$ 30,745,512	10.95%

* Includes collections on both current support and arrears.

** Includes collections on both current support and arrears; also includes money sent to other states.

SOURCE: NJKiDS (Based on Federal Quarterly Report of Collections - OCSE-34A except Disbursed Collections)
Disbursed Collections obtained from Federal Data Report - OCSE-157, which is reported annually to Congress and used in the calculation of incentive dollars earned by each state.

TABLE 13

OFFICE OF CHILD
SUPPORT SERVICES**OFFICE OF CHILD SUPPORT SERVICES**

State Summary

TITLE IV-D PATERNITY ESTABLISHMENT REPORT

Comparison of July (FFY 19 vs. FFY 20)

County Office	JULY 2019			JULY 2020			Increase or Decrease (-) from FFY 2019 to FFY 2020
	Total Children Born Out of Wedlock*	Number of Paternities Established	Percent of Paternities Established	Total Children Born Out of Wedlock*	Number of Paternities Established	Percent of Paternities Established	
Atlantic	6,824	6,747	98.9%	6,142	6,092	99.2%	0.3%
Bergen	3,327	3,267	98.2%	3,138	3,077	98.1%	-0.1%
Burlington	5,431	5,267	97.0%	4,796	4,681	97.6%	0.6%
Camden	16,571	16,047	96.8%	15,479	15,028	97.1%	0.2%
Cape May	1,346	1,325	98.4%	1,208	1,194	98.8%	0.4%
Cumberland	6,923	6,847	98.9%	6,458	6,397	99.1%	0.2%
Essex	27,153	25,534	94.0%	24,468	23,185	94.8%	0.7%
Gloucester	4,740	4,657	98.2%	4,241	4,184	98.7%	0.4%
Hudson	11,102	10,524	94.8%	9,873	9,454	95.8%	1.0%
Hunterdon	306	301	98.4%	252	252	100.0%	1.6%
Mercer	7,744	7,459	96.3%	6,849	6,666	97.3%	1.0%
Middlesex	6,925	6,707	96.9%	6,191	6,058	97.9%	1.0%
Monmouth	5,788	5,569	96.2%	4,924	4,777	97.0%	0.8%
Morris	1,393	1,380	99.1%	1,254	1,243	99.1%	0.1%
Ocean	5,114	4,998	97.7%	4,729	4,603	97.3%	-0.4%
Passaic	11,528	11,011	95.5%	10,064	9,675	96.1%	0.6%
Salem	2,821	2,730	96.8%	2,639	2,558	96.9%	0.2%
Somerset	1,573	1,530	97.3%	1,372	1,344	98.0%	0.7%
Sussex	590	584	99.0%	508	504	99.2%	0.2%
Union	10,703	10,182	95.1%	9,930	9,500	95.7%	0.5%
Warren	1,024	1,017	99.3%	891	900	101.0%	1.7%
NJ TOTALS	138,926	133,683	96.2%	125,406	121,372	96.8%	0.6%

SOURCE: NJKiDS (Based on Federal Performance Measures - OCSE-157)

* Information on Out of Wedlock Births obtained from NJ Bureau of Vital Statistics

TABLE 14

OFFICE OF CHILD
SUPPORT SERVICES**OFFICE OF CHILD SUPPORT SERVICES**

State Summary

TITLE IV-D REPORT OF CASES WITH ORDERS**Comparison of July (FFY 19 vs. FFY 20)**

County Office	JULY 2019			JULY 2020			Increase or Decrease (-) from FFY 2019 to FFY 2020
	TOTAL CASES	CASES WITH ORDERS	% OF CASES WITH ORDERS	TOTAL CASES	CASES WITH ORDERS	% OF CASES WITH ORDERS	
Atlantic	12,376	11,019	89.0%	11,235	10,324	91.9%	2.9%
Bergen	11,984	11,547	96.4%	11,314	11,049	97.7%	1.3%
Burlington	13,802	12,411	89.9%	12,294	11,591	94.3%	4.4%
Camden	28,875	26,723	92.5%	27,379	25,636	93.6%	1.1%
Cape May	3,153	2,887	91.6%	2,870	2,684	93.5%	2.0%
Cumberland	12,144	11,508	94.8%	11,388	10,964	96.3%	1.5%
Essex	43,894	35,885	81.8%	40,072	34,002	84.9%	3.1%
Gloucester	10,690	10,182	95.2%	9,841	9,486	96.4%	1.1%
Hudson	21,883	18,057	82.5%	19,309	17,251	89.3%	6.8%
Hunterdon	1,477	1,405	95.1%	1,359	1,277	94.0%	-1.2%
Mercer	14,234	12,780	89.8%	12,895	11,716	90.9%	1.1%
Middlesex	17,645	16,577	93.9%	16,457	15,471	94.0%	0.1%
Monmouth	14,450	13,794	95.5%	12,919	12,378	95.8%	0.4%
Morris	5,980	5,812	97.2%	5,511	5,390	97.8%	0.6%
Ocean	14,921	14,229	95.4%	13,928	13,408	96.3%	0.9%
Passaic	21,937	17,213	78.5%	19,255	16,127	83.8%	5.3%
Salem	4,406	4,173	94.7%	4,060	3,898	96.0%	1.3%
Somerset	4,831	4,535	93.9%	4,401	4,157	94.5%	0.6%
Sussex	2,681	2,616	97.6%	2,493	2,443	98.0%	0.4%
Union	18,469	17,394	94.2%	17,299	16,481	95.3%	1.1%
Warren	3,065	2,823	92.1%	2,807	2,631	93.7%	1.6%
NJ TOTALS	282,897	253,570	89.6%	259,086	238,364	92.0%	2.4%

SOURCE: NJKiDS (Based on Federal Performance Measures - OCSE-157)

TABLE 15

OFFICE OF CHILD
SUPPORT SERVICES

OFFICE OF CHILD SUPPORT SERVICES

State Summary

TITLE IV-D COLLECTIONS ON CURRENT SUPPORT

Comparison of July (FFY 19 vs. FFY 20)

County Office	JULY 2019			JULY 2020			Increase or Decrease (-) from FFY 2019 to FFY 2020
	Total Current Support Due	Total Current Support Distributed	Total Collection Rate	Total Current Support Due	Total Current Support Distributed	Total Collection Rate	
Atlantic	\$3,841,613	\$2,639,649	68.7%	\$3,737,462	\$2,506,571	67.1%	-1.6%
Bergen	\$8,743,191	\$6,820,363	78.0%	\$8,252,303	\$6,296,932	76.3%	-1.7%
Burlington	\$5,970,802	\$4,260,824	71.4%	\$5,628,089	\$3,979,002	70.7%	-0.7%
Camden	\$8,096,825	\$4,987,491	61.6%	\$7,953,186	\$4,962,491	62.4%	0.8%
Cape May	\$1,092,901	\$799,179	73.1%	\$1,108,247	\$779,383	70.3%	-2.8%
Cumberland	\$3,142,670	\$1,927,962	61.3%	\$3,084,581	\$1,869,674	60.6%	-0.7%
Essex	\$11,182,243	\$6,877,419	61.5%	\$10,740,676	\$6,594,599	61.4%	-0.1%
Gloucester	\$4,264,462	\$2,936,280	68.9%	\$4,218,376	\$2,858,330	67.8%	-1.1%
Hudson	\$7,309,613	\$5,104,711	69.8%	\$7,222,769	\$4,978,068	68.9%	-0.9%
Hunterdon	\$1,286,510	\$1,042,821	81.1%	\$1,214,651	\$982,886	80.9%	-0.1%
Mercer	\$4,242,653	\$2,727,231	64.3%	\$4,059,340	\$2,590,650	63.8%	-0.5%
Middlesex	\$7,978,676	\$5,686,422	71.3%	\$7,574,970	\$5,357,440	70.7%	-0.5%
Monmouth	\$7,508,831	\$5,662,466	75.4%	\$7,152,585	\$5,358,268	74.9%	-0.5%
Morris	\$4,549,795	\$3,512,343	77.2%	\$4,328,134	\$3,272,111	75.6%	-1.6%
Ocean	\$6,764,219	\$5,032,728	74.4%	\$6,459,349	\$4,730,782	73.2%	-1.2%
Passaic	\$6,691,060	\$4,415,564	66.0%	\$6,502,798	\$4,269,713	65.7%	-0.3%
Salem	\$1,128,825	\$695,197	61.6%	\$1,118,709	\$674,271	60.3%	-1.3%
Somerset	\$3,150,709	\$2,596,889	82.4%	\$3,040,878	\$2,471,223	81.3%	-1.2%
Sussex	\$1,842,512	\$1,493,843	81.1%	\$1,766,004	\$1,366,424	77.4%	-3.7%
Union	\$7,002,536	\$4,928,890	70.4%	\$6,815,116	\$4,764,418	69.9%	-0.5%
Warren	\$1,376,715	\$1,045,656	76.0%	\$1,286,696	\$937,391	72.9%	-3.1%
NJ TOTALS	\$107,167,360	\$75,193,928	70.2%	\$103,264,916	\$71,600,627	69.3%	-0.8%

SOURCE: NJKiDS (Based on Federal Performance Measures - OCSE-157)

TABLE 16

OFFICE OF CHILD
SUPPORT SERVICES**OFFICE OF CHILD SUPPORT SERVICES**

State Summary

TITLE IV-D CASES ARREARS COLLECTION REPORT

Comparison of July (FFY 19 vs. FFY 20)

County Office	JULY 2019			JULY 2020			Increase or Decrease (-) from FFY 2019 to FFY 2020
	Total Cases with Arrears	Total Amount Collected	Average Arrears Collection per Case	Total Cases with Arrears	Total Amount Collected	Average Arrears Collection per Case	
Atlantic	7,372	\$783,416	\$106.27	6,707	\$765,973	\$114.21	\$7.94
Bergen	7,574	\$1,210,120	\$159.77	7,011	\$1,192,024	\$170.02	\$10.25
Burlington	8,282	\$1,108,313	\$133.82	7,587	\$1,013,717	\$133.61	-\$0.21
Camden	16,921	\$1,541,097	\$91.08	15,704	\$1,590,614	\$101.29	\$10.21
Cape May	2,021	\$216,233	\$106.99	1,813	\$170,764	\$94.19	-\$12.80
Cumberland	7,604	\$597,527	\$78.58	6,896	\$607,595	\$88.11	\$9.53
Essex	22,538	\$2,548,125	\$113.06	21,097	\$2,561,468	\$121.41	\$8.35
Gloucester	6,906	\$737,541	\$106.80	6,251	\$729,306	\$116.67	\$9.87
Hudson	12,434	\$1,418,629	\$114.09	11,456	\$1,359,880	\$118.70	\$4.61
Hunterdon	855	\$149,744	\$175.14	759	\$144,415	\$190.27	\$15.13
Mercer	8,538	\$932,432	\$109.21	7,733	\$969,897	\$125.42	\$16.21
Middlesex	10,998	\$1,450,451	\$131.88	10,096	\$1,305,999	\$129.36	-\$2.53
Monmouth	8,795	\$1,330,456	\$151.27	8,015	\$1,387,914	\$173.16	\$21.89
Morris	3,918	\$766,682	\$195.68	3,518	\$549,447	\$156.18	-\$39.50
Ocean	9,267	\$1,125,048	\$121.40	8,396	\$1,154,881	\$137.55	\$16.15
Passaic	11,721	\$1,256,336	\$107.19	10,757	\$1,268,126	\$117.89	\$10.70
Salem	2,564	\$217,477	\$84.82	2,382	\$245,491	\$103.06	\$18.24
Somerset	3,027	\$470,639	\$155.48	2,673	\$428,827	\$160.43	\$4.95
Sussex	1,761	\$268,672	\$152.57	1,581	\$263,990	\$166.98	\$14.41
Union	11,485	\$1,478,523	\$128.74	10,581	\$1,431,950	\$135.33	\$6.60
Warren	1,818	\$242,125	\$133.18	1,653	\$222,301	\$134.48	\$1.30
NJ TOTALS	166,399	\$19,849,586	\$119.29	152,666	\$19,364,579	\$126.84	\$7.55

SOURCE:OCSE-157 Child Support Enforcement Annual Data Report

Table 17

WORK FIRST NEW JERSEY STATISTICAL SUMMARY

WFNJ

JULY 2020

COUNTY	EMPLOYMENT DIRECTED ACTIVITIES			EMPLOYED OPEN (WFNJ RECIPIENT)	SUPPORT SERVICES ON ACTIVE CASE		CLOSED FOR EMPLOYMENT THIS MONTH	POST ASSISTANCE CHILD CARE
	CWEP	ALL OTHER TRAINING	JOB SEARCH		CHILD CARE	TRAINING REL. EXPENSES		
ATLANTIC	0	26	0	34	23	38	2	44
BERGEN	17	3	0	7	56	0	2	7
BURLINGTON	6	11	0	31	42	0	3	54
CAMDEN	32	107	0	56	153	0	7	63
CAPE MAY	0	2	0	4	9	0	1	4
CUMBERLAND	0	40	0	4	28	0	2	10
ESSEX	43	133	0	51	285	19	6	200
GLOUCESTER	2	7	0	11	11	0	0	30
HUDSON	19	106	0	51	280	0	8	68
HUNTERDON	0	0	0	1	1	0	0	2
MERCER	36	47	0	40	114	0	10	66
MIDDLESEX	12	21	0	18	25	1	9	81
MONMOUTH	8	4	0	19	28	0	3	40
MORRIS	3	7	0	7	13	0	0	3
OCEAN	5	54	0	7	18	0	1	26
PASSAIC	34	66	0	19	160	0	6	20
SALEM	2	10	0	2	11	0	2	2
SOMERSET	0	5	0	5	29	0	1	20
SUSSEX	1	0	0	2	2	0	2	1
UNION	40	16	0	12	47	2	2	17
WARREN	0	12	0	13	6	0	2	11
							69	
STATE	260	677	0	394	1,341	60	69	769

Data is derived from NJ Division of Family Development's FAMIS Reports RM064-01 & RM703-51, AdHoc Reports 5549 & 5598 and SDW Report WR00022WZ_CC

DIVISION OF FAMILY DEVELOPMENT CURRENT PROGRAM STATISTICS
JULY 2020

ACRONYMS

EMERGENCY ASSISTANCE (EA) - Payments to those eligible for WFNJ/TANF or WFNJ/GA, authorized during the 30 consecutive days immediately following the emergency (defined as a substantial loss of shelter, food, clothing, or household furnishings by fire, flood or other similar disaster) or if eligible individual or family is in an imminent or actual state of homelessness.

NJ SNAP - Formerly the Food Stamp Program, now known as **NJ SNAP** (NJ Supplemental Nutrition Assistance Program) authorized by Congress as a nutritional supplement program to provide low income households with more food of greater variety and better nutrition. Program eligibility is based on household income, resources, and expenses for medical, shelter, and dependent care. CWA staff refers certain recipients to the New Jersey Department of Labor for participation in the Food Stamp Employment and Training Program.

FAMIS: Family Assistance Management Information System

GAAS: General Assistance Automated System

NJKIDS: New Jersey Kids Deserve Support (Child Support Information Management System)

NJ MMIS SHARED DATA WAREHOUSE: The Shared Data Warehouse (SDW) is the repository for New Jersey's DFD and Medicaid data. Since 2003, OptumInsight has administered the SDW and provided access to the data through a reporting tool known as Business Objects.

OMEGA: Online Management of Economic Goal Achievement

SSI-EA: Supplemental Security Income-Emergency Assistance

WFNJ: Work First New Jersey - Fully implemented July 1, 1997, this is New Jersey's welfare reform program which responds to the requirements of the Federal Personal Responsibility and Work Opportunity Reconciliation Act (**PRWORA**) of 1996. PRWORA established Temporary Assistance for Needy Families (**TANF**) as the replacement for AFDC cash assistance. WFNJ includes two segments, **WFNJ/TANF** for families with children, and **WFNJ/GA** (General Assistance) for single adults and couples without dependent children. WFNJ emphasizes achieving self-sufficiency and limits lifetime receipt of financial assistance to a total of five years.

**DIVISION OF FAMILY DEVELOPMENT CURRENT PROGRAM STATISTICS
JULY 2020**

EXPLANATORY NOTES

The Department of Human Services Division of Family Development provides basic income and an opportunity to achieve self-sufficiency for individuals and families served by the Division's programs. The Division provides leadership, direction and supervision to those public agencies responsible for administering those programs and plans for and develops policies to promote self-sufficiency.

WFNJ Statistical Summary (Table 17)

Employment Directed Activities (EDA) - From Activities Summary Report (OMEGA report # RM064). Unduplicated count of persons participating in Community Work Experience Program (CWEP), All Other Training, or Job Search.

Number of Persons Employed This Month, Still Receiving TANF Individuals with open "empl" activity on OMEGA. Ad hoc report.

Participants Receiving Child Care Services - From Issuance Disbursement Summary (OMEGA report # RM703). Total number of active participants who show receipt of **Child Care**.

Number of Persons Closed on FAMIS Due to Employment - From FAMIS report #5549-RM-2.

Post TANF and Receiving Child Care - Persons no longer in receipt of TANF but still receiving child care. From Share Data Warehouse Child Care case count based on Child Care payments (SDW report WR00022WZ_CC).