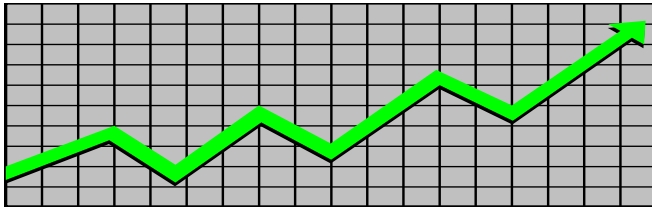


State of New Jersey
Department of Human Services
Division of Family Development

CURRENT PROGRAM STATISTICS



June 2021
Natasha Johnson, Assistant Commissioner

TABLE OF CONTENTS

HIGHLIGHTS:

WFNJ/TANF	ii
NJ SNAP	ii
EMERGENCY ASSISTANCE	ii
GENERAL ASSISTANCE	iii
GA Emergency Assistance.....	iii
GA Program.....	iii
CHILD SUPPORT SERVICES	iii
WORK FIRST NEW JERSEY (WFNJ)	iii
STATISTICS- BY STATE & COUNTY	1
Table 1: WFNJ/TANF Families & Persons (NJ Statewide) June 2019 to 2021.....	1
Table 2: WFNJ/TANF Families (by County)- June 2021.....	2
Table 2B: WFNJ/TANF Persons, Adults, & Children (by County)- June 2021.....	3
Table 3: TANF Work Participation Rates Over 12 Month Period (by County)- June 2021.....	4
Table 4: TANF Work Participation Rates Over 12 Month Period (NJ Statewide)- June 2021.....	5
Table 5: NJ SNAP Households/Persons (NJ Statewide) June 2019 to 2021.....	6
Table 6: NJ SNAP Recipient Trends (NJ Statewide) June 2019 to 2021.....	7
Table 7: NJ SNAP Households/Persons (by County)- June 2021.....	8
Table 8: Emergency Assistance Program (NJ Statewide) June 2019 to 2021.....	9
Table 9: Emergency Assistance Program (by County)- June 2021.....	10
Table 10: General Assistance Program (NJ Statewide) June 2019 to 2021.....	11
Table 11: General Assistance Program (by County)- June 2021.....	12
Table 12: Child Support Services Distributions (NJ Statewide) FFY 2021.....	13
Table 13: Child Support Services Paternities Established- June 2021.....	14
Table 14: Child Support Services Cases With Orders- June 2021.....	15
Table 15: Child Support Services Collections On Current Support- June 2021.....	16
Table 16: Child Support Services Cases With Payments On Arrears- June 2021.....	17
Table 17: WFNJ Statistical Summary- June 2021.....	18
ACRONYMS	19
EXPLANATORY NOTES	20
WFNJ Statistical Summary (Table 17).....	20

DIVISION OF FAMILY DEVELOPMENT CURRENT PROGRAM STATISTICS

JUNE 2021

Each month the Division of Family Development publishes its program statistics for: WFNJ/TANF, NJ SNAP, Emergency Assistance, General Assistance, and Child Support Services. When possible, information is provided separately for children and adults. Many tables also provide trend data with information broken down by county for readers to consider. This report is compiled and prepared by The Bureau of Research & Reporting.

WFNJ/TANF

- At the end of June, the TANF caseload had decreased by 2,650 cases, from 12,147 in June 2020 to 9,497 in June 2021; a decrease of -21.8%.
- The counties with caseloads that decreased the most since June 2020 were Sussex (-44.7%), Burlington (-34.8%), and Gloucester (-34.7%).
- Of the WFNJ/TANF cases, 3,141 or 33.1% were child-only in June 2021.
- The counties with the most child-only cases were Camden (525), Essex (396), and Hudson (365).
- Essex (3,869), Hudson (3,426), and Camden (3,140) counties had the greatest number of persons receiving TANF in June 2021.

NJ SNAP (Formerly FOOD STAMPS)

- In June 2021, there were 450,358 households receiving NJ SNAP benefits. The number of NJ SNAP households increased by 80,534 or 21.8%, since June 2020.
- There were 883,740 persons receiving NJ SNAP benefits as of June 2021; an increase of 158,424 or 21.8% since June 2020.
- The counties having the highest caseload increase since June 2020 were Union (39.9%), Essex (39.8%), and Atlantic (27.9%).

EMERGENCY ASSISTANCE

- There were 1,393 TANF families receiving Emergency Assistance (EA) in June 2021; a decrease of 239 or -14.6% since June 2020.
- In June 2021, EA payments were made for 667 SSI recipients.

DIVISION OF FAMILY DEVELOPMENT CURRENT PROGRAM STATISTICS JUNE 2021

- There were 1,902 GA cases with Emergency Assistance payments in June 2021; a decrease of 269 or -12.4% since June 2020.
- The counties that showed the highest percent increase in Emergency Assistance payments were Hudson (61.7%), Middlesex (24.3%), and Union (16.7%).
- The counties that showed the highest percent decrease in Emergency Assistance payments were Cumberland (-83.3%), Essex (-73.2%), and Gloucester (-62.7%).

GENERAL ASSISTANCE

- The total numbers of cases receiving GA has increased from 13,230 to 13,247 since June 2020; an increase of 0.1%.
- There were 9,007 Employable GA and 4,130 Unemployable GA cases in June 2021.
- The counties that showed a percent increase for GA cases were Warren (58.6%), Hudson (31.5%), and Camden (14.5%) since June 2020.
- The counties that showed the highest percent decrease for GA cases since June 2020 were Hunterdon (-40.4%), Sussex (-37.6%), and Gloucester (-37.3%).
- In June 2021, GA cases showed a -5.7% decrease since May 2021.

CHILD SUPPORT SERVICES (QUARTERLY REPORT)

- The total collection for the Child Support Services Program was about \$323 million from April 2021 to June 2021; a decrease of -10.3% over the same period from FFY 2020.
- Total distributions decreased -10.6% from June 2020.

WORK FIRST NEW JERSEY (WFNJ)

- During the report month of June 2021, there were 186 families in which at least one member was employed and an additional 62 families whose WFNJ assistance cases were closed due to employment - related earnings.
- The three counties with the greatest number of employed active WFNJ recipients were: Essex (46), Hudson (25), and Middlesex(17).
- There were 287 former TANF cases receiving post-TANF support in the form of child care assistance.

TABLE 1:

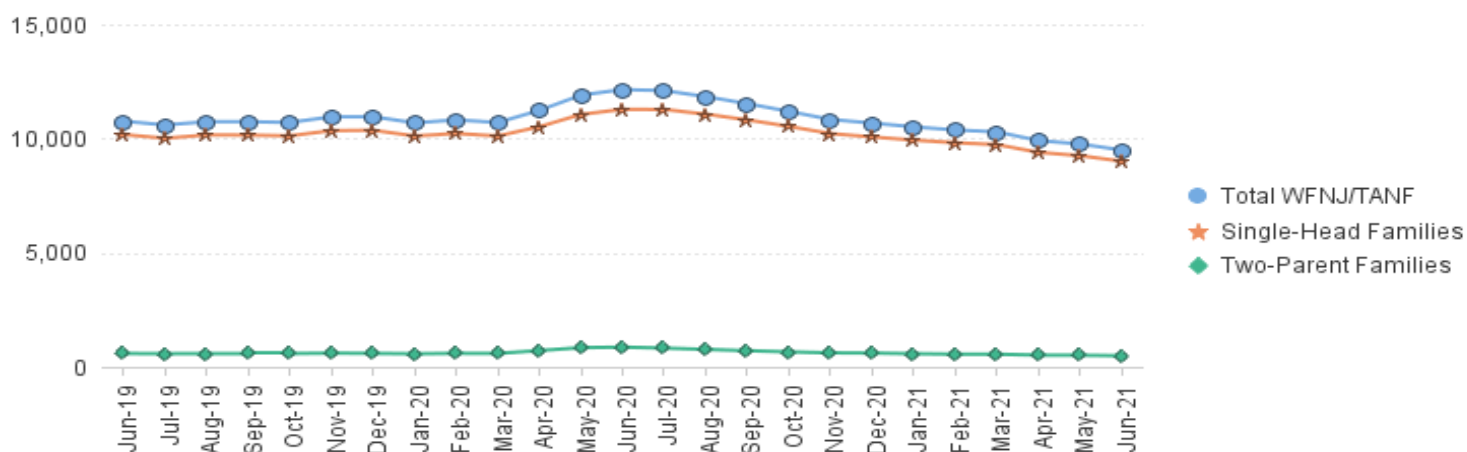
WFNJ/TANF PROGRAM

STATEWIDE NUMBER OF APPLICATIONS AND TERMINATIONS DURING JUNE 2021

NUMBER OF ELIGIBLE FAMILIES & PERSONS RECEIVING WFNJ/TANF FOR JUNE 2021

JUNE 2019 THROUGH JUNE 2021												
		Cases Added	Cases Closed	Child-Only Cases ‡	Total Single-Head Families	2-Parent Families	Total WFNJ/TANF Families	%CHNG (1 Yr.)	Total Persons	%CHNG (1 Yr.)	Adults	Children
2019	JUN	1,024	1,135	3,790	10,175	588	10,763	-19.3%	26,674	-19.7%	7,561	19,113
	JUL	1,040	1,231	3,710	10,014	580	10,594	-18.0%	26,323	-17.8%	7,464	18,859
	AUG	1,209	1,135	3,723	10,158	582	10,740	-16.1%	26,735	-18.6%	7,599	19,136
	SEP	1,055	1,048	3,679	10,153	586	10,739	-14.8%	26,803	-14.0%	7,646	19,157
	OCT	1,137	1,253	3,556	10,120	586	10,706	-14.1%	26,933	-13.3%	7,736	19,197
	NOV	1,181	1,159	3,664	10,348	605	10,953	-11.1%	27,644	-10.1%	7,894	19,750
	DEC	1,053	1,042	3,689	10,364	593	10,957	-9.5%	27,766	-8.4%	7,861	19,905
2019	Average	1,044	1,220	3,795	10,322	596	10,918		27,263		7,720	19,543
2020	JAN	921	1,183	3,646	10,113	576	10,689	-8.3%	27,129	-6.5%	7,619	19,510
	FEB	1,066	1,007	3,669	10,222	596	10,818	-3.1%	27,517	-1.1%	7,745	19,772
	MAR	915	1,024	3,612	10,113	592	10,705	-3.7%	27,196	-1.5%	7,685	19,511
	APR	1,179	712	3,621	10,519	716	11,235	3.7%	28,765	6.7%	8,330	20,435
	MAY	832	232	3,696	11,057	845	11,902	10.2%	30,734	14.4%	9,051	21,683
	JUN	539	278	3,722	11,281	866	12,147	12.9%	31,370	17.6%	9,291	22,079
	JUL	458	526	3,686	11,274	826	12,100	14.2%	31,216	18.6%	9,240	21,976
	AUG	410	660	3,665	11,070	768	11,838	10.2%	30,454	13.9%	8,941	21,513
	SEP	475	796	3,603	10,817	711	11,528	7.3%	29,531	10.2%	8,636	20,895
	OCT	534	904	3,564	10,532	659	11,191	4.5%	28,657	6.4%	8,286	20,371
	NOV	419	767	3,470	10,218	617	10,835	-1.1%	27,738	0.3%	7,982	19,756
	DEC	434	595	3,410	10,071	607	10,678	-2.5%	27,371	-1.4%	7,875	19,496
2020	Average	682	724	3,614	10,607	698	11,306		28,973		8,390	20,583
2021	JAN	400	585	3,379	9,932	580	10,512	-1.7%	26,960	-0.6%	7,713	19,247
	FEB	378	504	3,347	9,818	559	10,377	-4.1%	26,520	-3.6%	7,589	18,931
	MAR	397	481	3,311	9,735	557	10,292	-3.9%	26,335	-3.2%	7,538	18,797
	APR	298	704	3,224	9,395	518	9,913	-11.8%	25,276	-12.1%	7,207	18,069
	MAY	264	510	3,209	9,250	513	9,763	-18.0%	24,858	-19.1%	7,067	17,791
	JUN	373	636	3,141	9,008	489	9,497	-21.8%	24,146	-23.0%	6,845	17,301
2021	Average to date	352	570	3,269	9,523	536	10,059		25,683		7,327	18,356

**NJ STATEWIDE
Eligible Families Receiving WFNJ/TANF
JUNE 2019 THROUGH JUNE 2021**



Data is derived from NJ MMIS Shared Data Warehouse Issuance files.

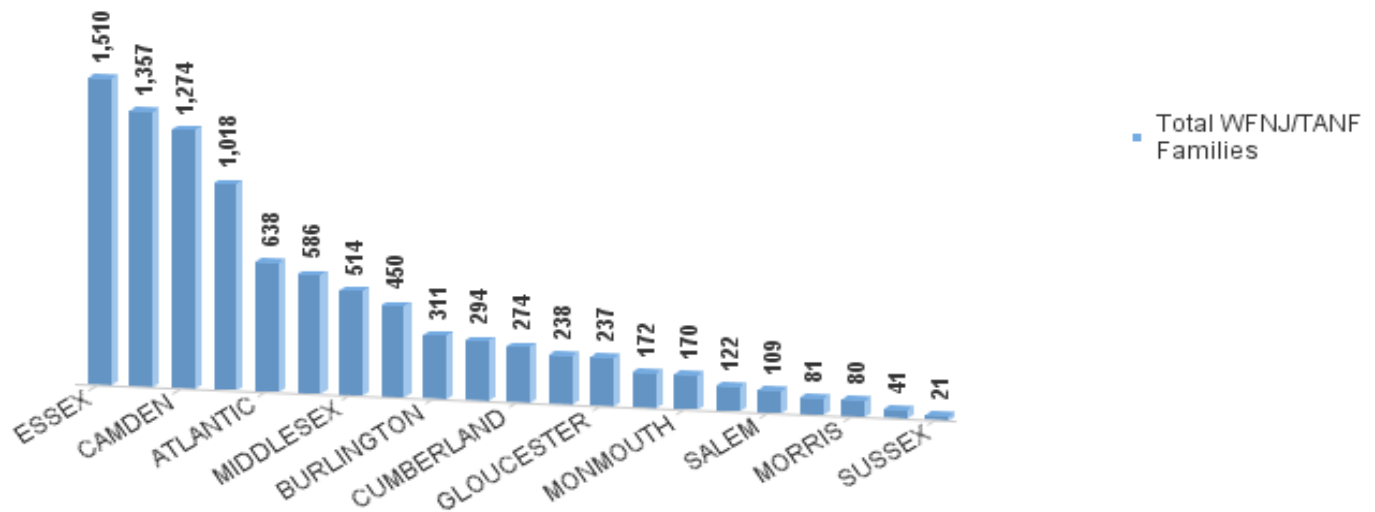
Effective July 2013 this data query source was converted to the SDW

‡ Child-only cases are defined as families in which no eligible adult receives TANF program benefits, yet the family continues to be headed by at least one of the biological parents, or grandparents, or other appropriate adult.

TABLE 2:
WFNJ/TANF PROGRAM **NUMBER OF APPLICATIONS AND TERMINATIONS BY COUNTY DURING JUNE 2021**
NUMBER OF ELIGIBLE FAMILIES RECEIVING WFNJ/TANF FOR JUNE 2021

County	Cases Added	Cases Closed **	Child-	1-Adult Cases	Total	2-Parent Families	Total	%CHNG (3 Mon)	%CHNG (1 Yr.)	
			Only Cases ‡		Single-Head Families		WFNJ/TANF Families			
ATLANTIC	19	34	258	352	610	28	638	-4.1%	-18.0%	
BERGEN	10	12	57	167	224	14	238	-3.3%	-24.2%	
BURLINGTON	15	20	122	178	300	11	311	-1.3%	-34.8%	*
CAMDEN	49	71	525	700	1,225	49	1,274	-0.3%	-16.3%	Δ
CAPE MAY	0	4	36	42	78	3	81	-2.4%	-30.2%	
CUMBERLAND	9	22	126	133	259	15	274	-5.5%	-31.2%	
ESSEX	30	141	396	1,053	1,449	61	1,510	-8.7%	-11.2%	Δ
GLOUCESTER	10	19	95	132	227	10	237	-6.0%	-34.7%	*
HUDSON	79	106	365	912	1,277	80	1,357	-4.9%	-29.7%	
HUNTERDON	6	4	9	25	34	7	41	-8.9%	-18.0%	
MERCER	21	28	207	354	561	25	586	1.4%	-22.5%	
MIDDLESEX	16	26	190	298	488	26	514	-3.4%	-21.8%	
MONMOUTH	7	14	70	95	165	5	170	-9.1%	-33.6%	
MORRIS	2	6	25	43	68	12	80	-2.4%	-24.5%	
OCEAN	8	29	79	206	285	9	294	-7.3%	-25.9%	
PASSAIC	23	47	316	654	970	48	1,018	-4.4%	-10.3%	Δ
SALEM	8	8	36	66	102	7	109	-7.6%	-30.1%	
SOMERSET	6	11	50	114	164	8	172	-3.9%	-29.2%	
SUSSEX	0	1	6	11	17	4	21	-8.7%	-44.7%	*
UNION	52	24	136	257	393	57	450	1.1%	-22.0%	
WARREN	3	9	37	75	112	10	122	-8.3%	-30.7%	
NJ Total	373	636	3,141	5,867	9,008	489	9,497	-4.2%	-21.8%	

Total WFNJ/TANF Families
JUNE 2021
By County



Data is derived from NJ MMIS Shared Data Warehouse Issuance files.
Effective July 2013 this data query source was converted to the SDW

‡ Child-only cases are defined as families in which no eligible adult receives TANF program benefits, yet the family continues to be headed by at least one of the biological parents, or grandparents, or other appropriate adult

** 'Cases closed' include cases that received a benefit in the prior month, but did not receive any TANF benefit for the report month.

Δ=higher caseload % change

*=lower caseload % change

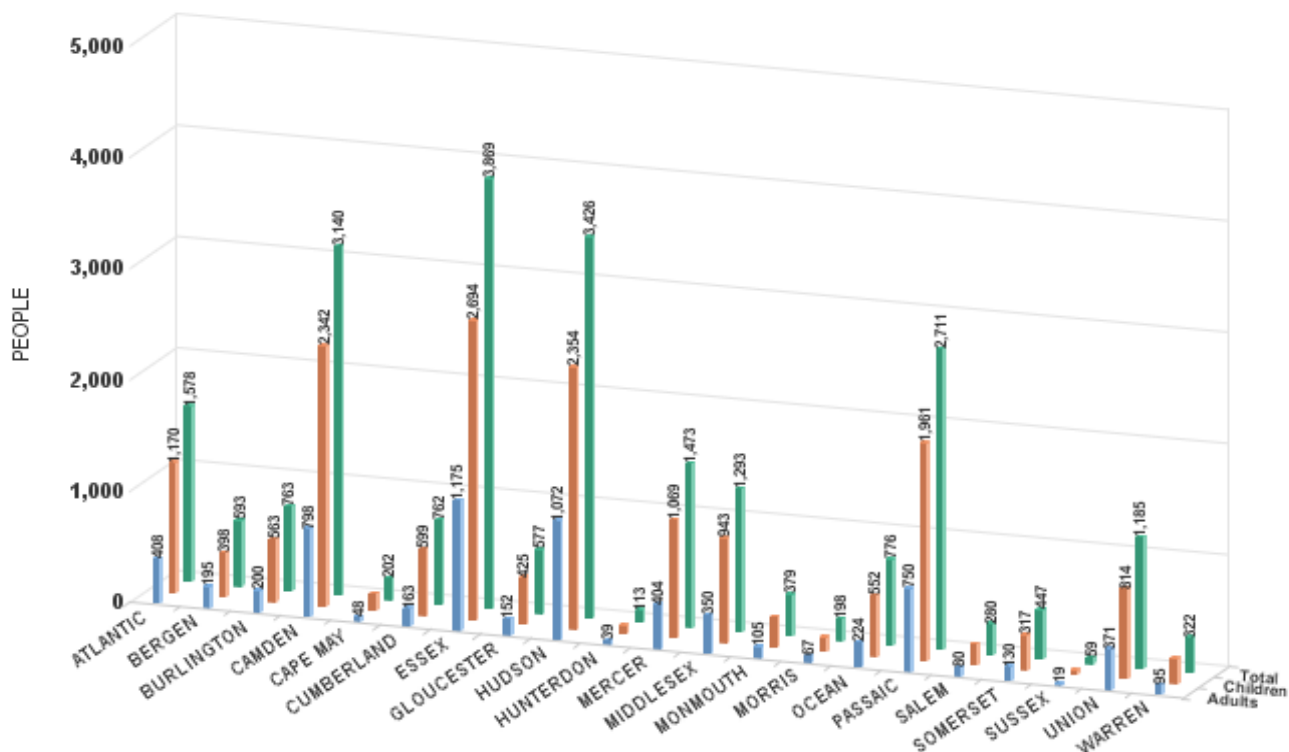
TABLE 2B :

WFNJ/TANF
PROGRAMNUMBER OF PARTICIPATING PERSONS, ADULTS, AND CHILDREN
BY COUNTY FOR JUNE 2021PERSONS

County	Adults	Children	Child/Adult Ratio	Total Persons	% Chng (1 Yr)	Persons Per Case
ATLANTIC	408	1,170	2.87	1,578	-20.7%	2.47
BERGEN	195	398	2.04	593	-25.1%	2.49
BURLINGTON	200	563	2.82	763	-38.7%	* 2.45
CAMDEN	798	2,342	2.93	3,140	-19.3%	2.46
CAPE MAY	48	154	3.21	202	-30.6%	2.49
CUMBERLAND	163	599	3.67	762	-30.9%	2.78
ESSEX	1,175	2,694	2.29	3,869	-12.8%	Δ 2.56
GLOUCESTER	152	425	2.80	577	-34.3%	2.43
HUDSON	1,072	2,354	2.20	3,426	-31.5%	2.52
HUNTERDON	39	74	1.90	113	-18.7%	Δ 2.76
MERCER	404	1,069	2.65	1,473	-21.4%	2.51
MIDDLESEX	350	943	2.69	1,293	-23.2%	2.52
MONMOUTH	105	274	2.61	379	-36.0%	* 2.23
MORRIS	67	131	1.96	198	-31.3%	2.48
OCEAN	224	552	2.46	776	-25.9%	2.64
PASSAIC	750	1,961	2.61	2,711	-9.2%	Δ 2.66
SALEM	80	200	2.50	280	-28.8%	2.57
SOMERSET	130	317	2.44	447	-30.5%	2.60
SUSSEX	19	40	2.11	59	-41.6%	* 2.81
UNION	371	814	2.19	1,185	-22.0%	2.63
WARREN	95	227	2.39	322	-32.5%	2.64
NJ Total	6,845	17,301	2.53	24,146	-23.0%	2.54

Δ=higher caseload % change

*=lower caseload % change



Data is derived from NJ MMIS Shared Data Warehouse Issuance files.
Effective July 2013 this data query source was converted to the SDW

TABLE 3 :

**Work Participation Rates Achieved Over 12 Month Period
Ending with JUNE 2021**

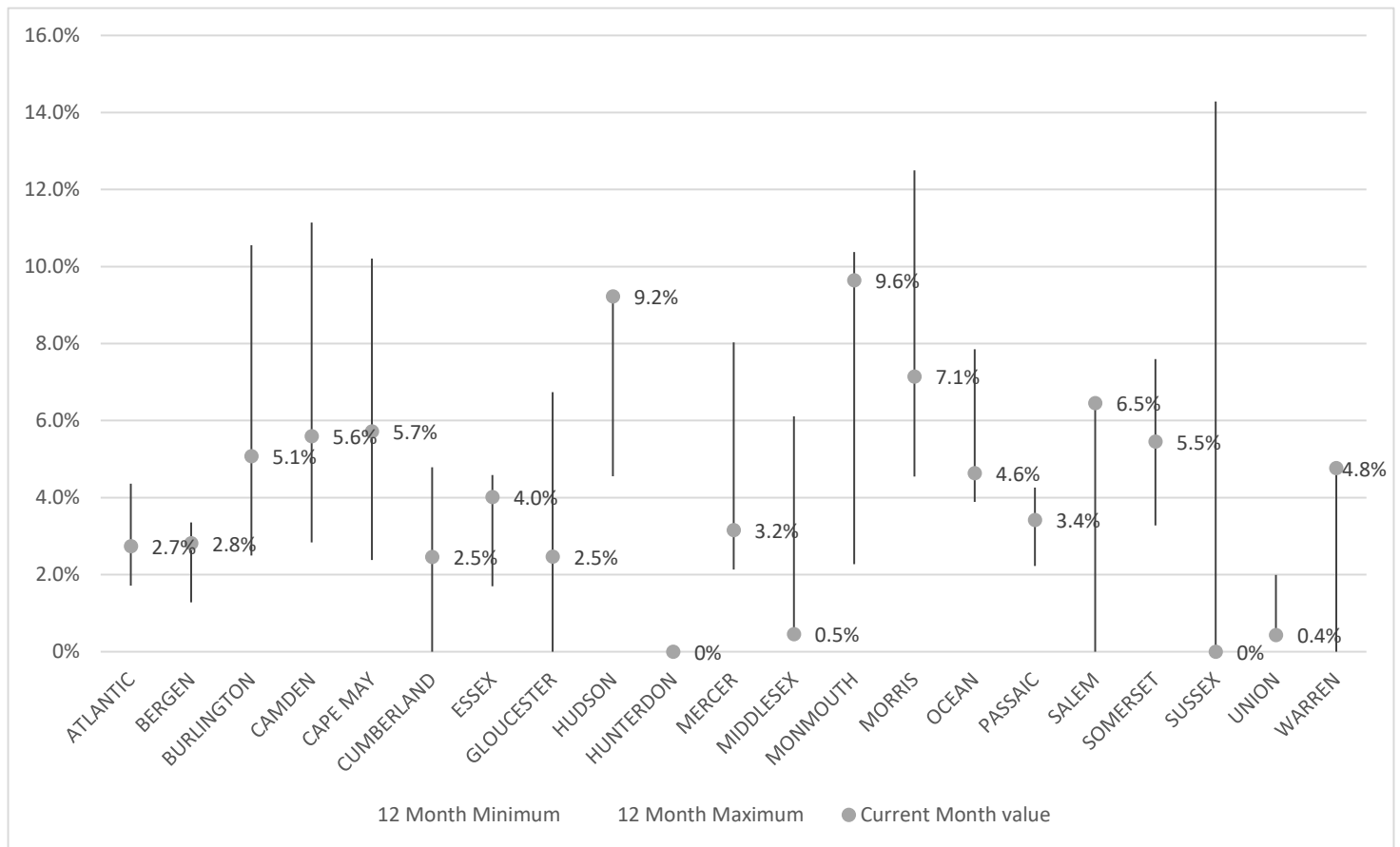
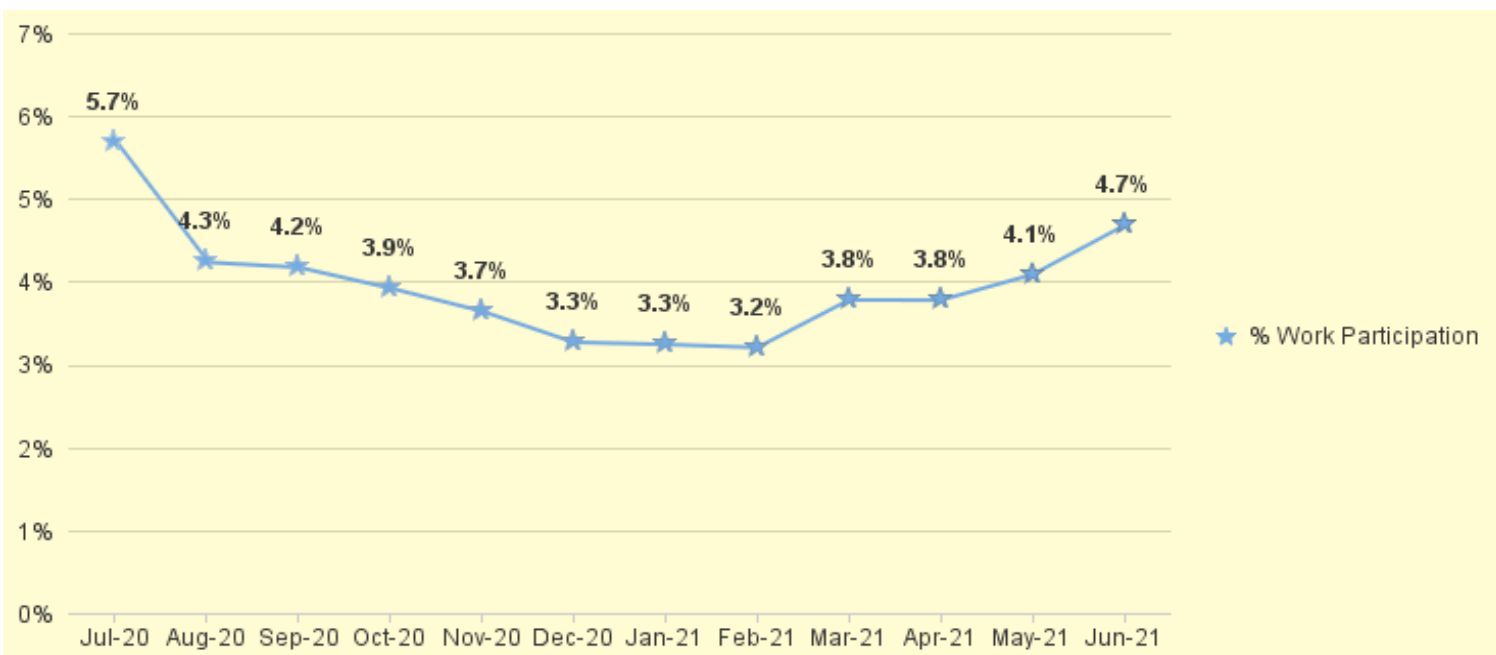


TABLE 4 :

**WFNJ/TANF Work Participation Rates
for 12-Month Period Ending with JUNE 2021 Statewide**



* The Work Participation rate measures the number of countable Temporary Assistance for Needs Families (TANF) participants based on federal formula. The reported rate is considered to be preliminary until officially calculated by the federal government soon after the close of each federal fiscal year.

TABLE 5 :

NJ SNAP
(FOOD STAMPS)NUMBER OF PARTICIPATING HOUSEHOLDS, PERSONS, ADULTS
AND CHILDREN FOR JUNE 2021 (STATEWIDE)

JUNE 2019 THROUGH JUNE 2021

		HOUSEHOLDS				PERSONS				Age 60+	People with a disability
		WFNJ/ TANF	Other low income	Total	% CHNG (1 YR)	Adults	Children	TOTAL	% CHNG (1 YR)		
2019	JUN	10,149	336,301	346,450	-7.2%	367,279	317,566	684,845	-8.1%	122,060	203,512
	JUL	9,962	333,891	343,853	-6.4%	365,264	314,222	679,486	-7.2%	121,238	202,824
	AUG	10,570	336,384	346,954	-5.5%	368,890	317,373	686,263	-6.2%	121,200	203,620
	SEP	10,319	331,162	341,481	-7.0%	363,290	310,676	673,966	-7.8%	120,200	202,119
	OCT	10,242	328,140	338,382	-6.8%	360,298	305,917	666,215	-7.7%	119,254	200,853
	NOV	10,580	331,660	342,240	-5.1%	364,880	310,523	675,403	-5.8%	119,560	202,867
	DEC	10,445	330,157	340,602	-4.9%	362,992	308,279	671,271	-5.8%	119,046	205,081
2019	Average	10,313	334,715	345,028		366,125	315,561	681,686		121,550	203,671
2020	JAN	10,201	325,866	336,067	-6.3%	358,028	301,901	659,929	-7.4%	117,898	201,955
	FEB	10,245	326,468	336,713	0.4%	358,670	302,524	661,194	0.5%	117,775	201,863
	MAR	10,328	324,689	335,017	-4.8%	357,989	299,375	657,364	-5.8%	117,369	201,521
	APR	11,112	337,037	348,149	0.3%	373,744	309,095	682,839	-0.6%	118,173	204,375
	MAY	11,513	353,998	365,511	5.2%	394,281	323,636	717,917	4.4%	119,744	208,152
	JUN	11,522	358,302	369,824	6.7%	398,959	326,357	725,316	5.9%	120,137	209,224
	JUL	11,336	364,797	376,133	9.4%	405,652	329,166	734,818	8.1%	120,881	211,115
	AUG	11,044	373,293	384,337	10.8%	414,644	333,705	748,349	9.0%	118,173	204,375
	SEP	10,928	384,063	394,991	15.7%	426,710	342,621	769,331	14.1%	122,341	214,255
	OCT	10,605	393,716	404,321	19.5%	437,538	350,440	787,978	18.3%	123,068	216,012
	NOV	10,335	395,876	406,211	18.7%	440,136	350,631	790,767	17.1%	123,104	216,208
	DEC	10,308	401,212	411,520	20.8%	446,083	354,408	800,491	19.3%	123,498	221,131
2020	Average	10,790	361,610	372,400		401,036	326,988	728,024		120,180	209,182
2021	JAN	10,214	409,050	419,264	24.8%	454,910	360,490	815,400	23.6%	123,751	221,129
	FEB	9,980	413,080	423,060	25.6%	459,801	362,760	822,561	24.4%	123,888	221,585
	MAR	9,632	418,259	427,891	27.7%	465,302	366,223	831,525	26.5%	124,614	222,961
	APR	9,474	423,186	432,660	24.3%	470,412	369,625	840,037	23.0%	125,182	224,256
	MAY	9,371	428,961	438,332	19.9%	476,827	373,151	849,978	18.4%	125,750	225,339
	JUN	9,833	440,525	450,358	21.8%	490,430	393,310	883,740	21.8%	126,085	227,479
2021	Average to date	9,751	422,177	431,928		469,614	370,927	840,540		124,878	223,792

This Table is based on those Households & Persons that received SNAP issuances (benefits) during the month

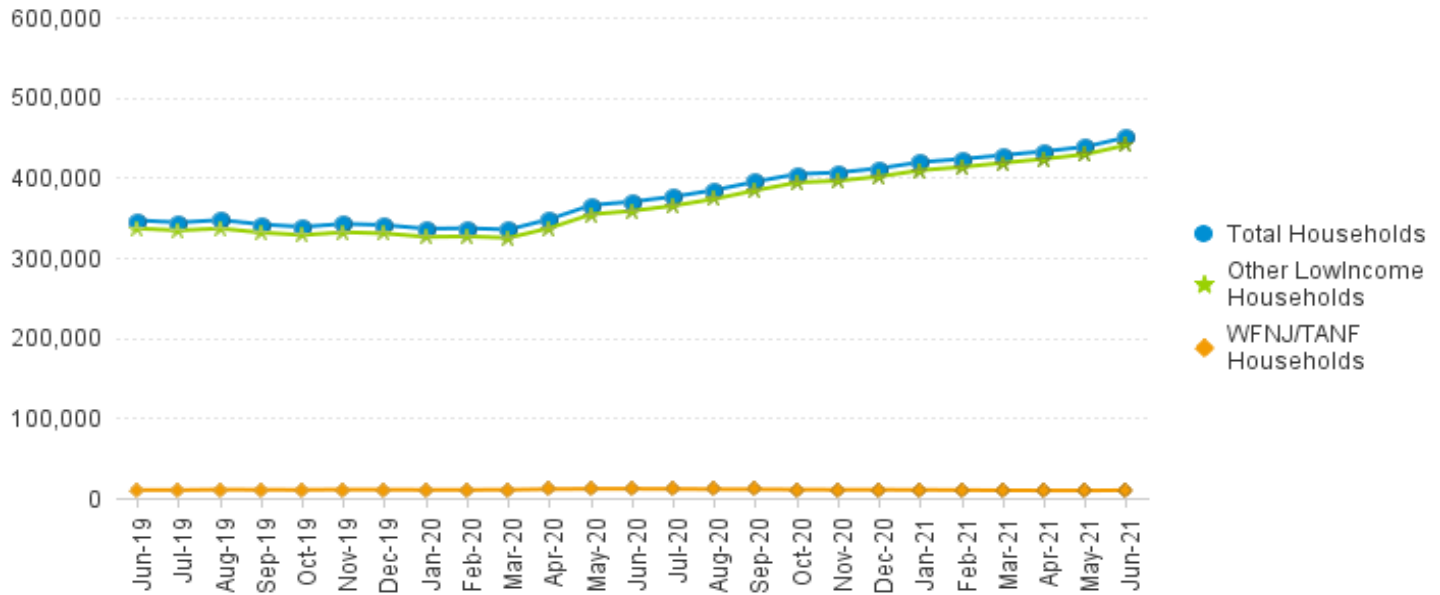
Data is derived from NJ MMIS Shared Data Warehouse.

Effective July 2013 this data query source was converted to the SDW.

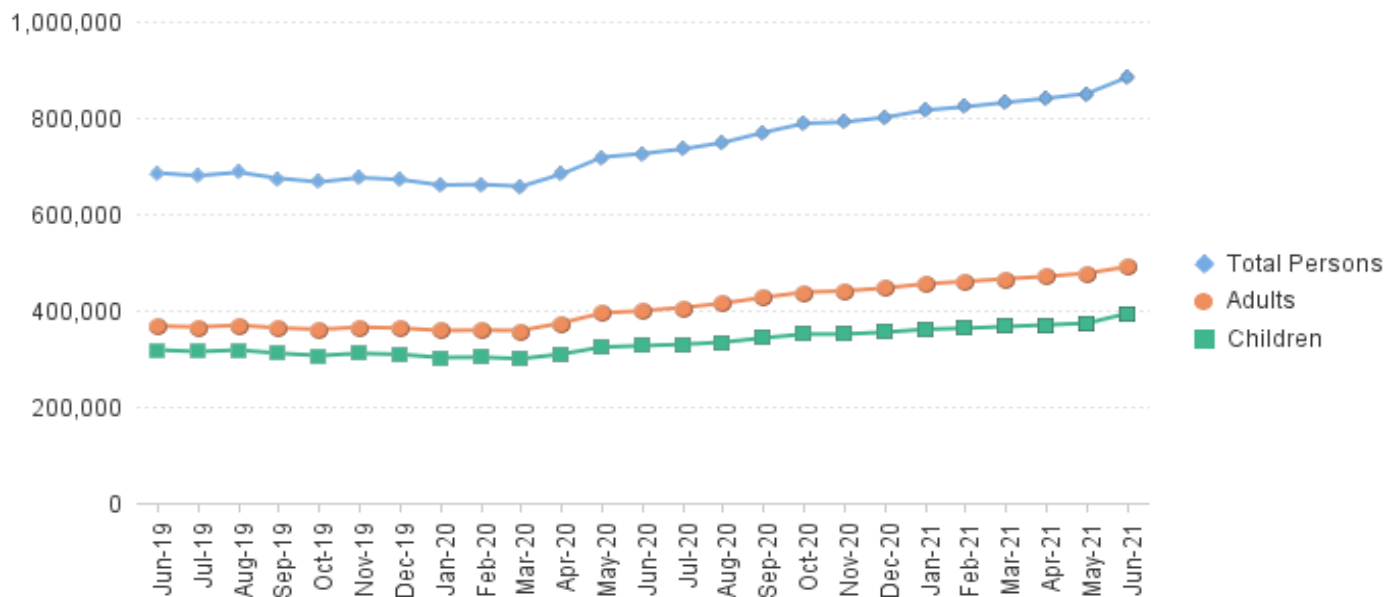
* Age 60+ and People with a disability columns are independent subsets of total persons. An individual might appear in both columns

TABLE 6: NJ SNAP (FOOD STAMPS)
TRENDS FOR PARTICIPATING HOUSEHOLDS & PERSONS
JUNE 2019 THROUGH JUNE 2021 (STATEWIDE)

Statewide NJ SNAP Households: JUNE 2019 Through JUNE 2021



Statewide NJ SNAP Persons: JUNE 2019 Through JUNE 2021



Data is derived from NJ MMIS Shared Data Warehouse Issuance files.

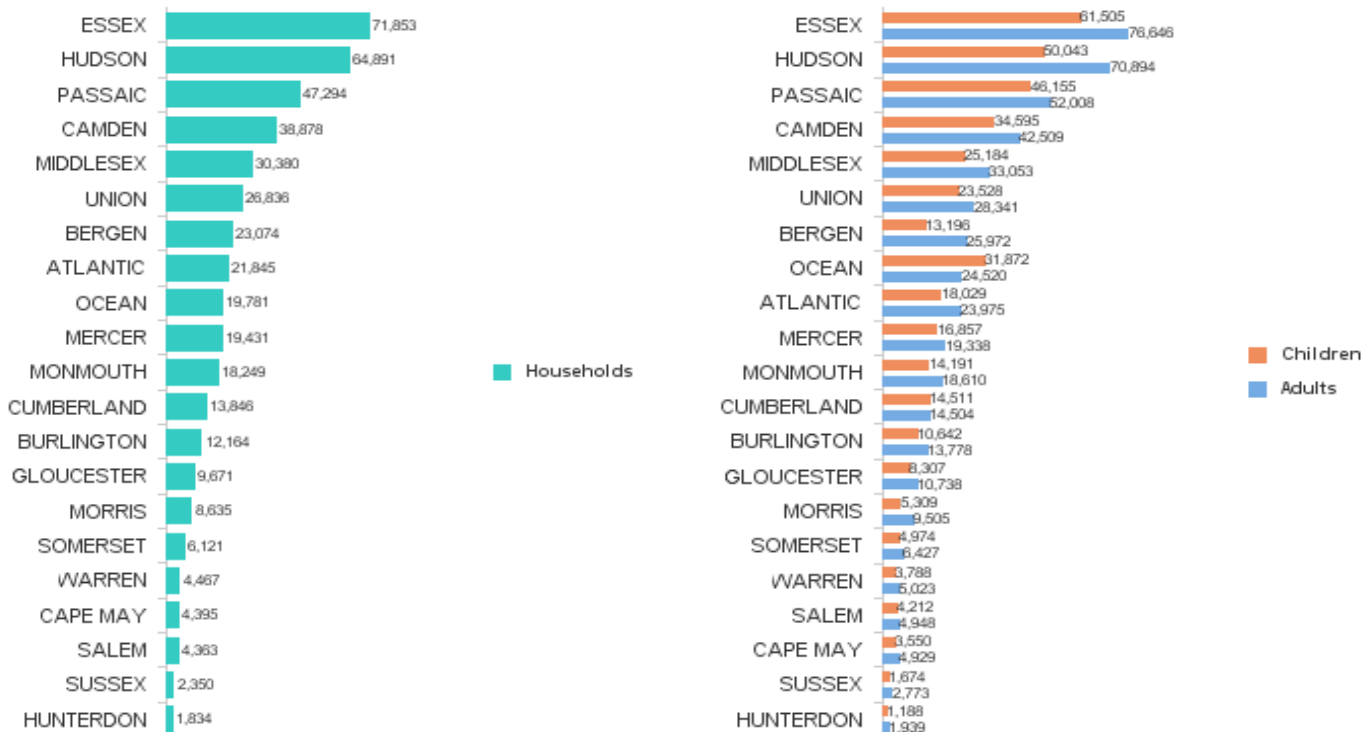
Effective July 2013 this data query source was converted to the SDW

TABLE 7 :
NJ SNAPNUMBER OF PARTICIPATING HOUSEHOLDS, PERSONS, ADULTS
AND CHILDREN BY COUNTY FOR JUNE 2021

County	HOUSEHOLDS					PERSONS						
	WFNJ/ TANF	Other low income	TOTAL	% Chng (1 Yr)		Adults	Children	TOTAL	% Chng (1 Yr)	Age 60+	People with a disability	
ATLANTIC	582	21,263	21,845	27.9%	Δ	23,975	18,029	42,004	27.6%	Δ	5,051	10,877
BERGEN	277	22,797	23,074	16.2%		25,972	13,196	39,168	20.9%		12,259	15,814
BURLINGTON	320	11,844	12,164	16.3%		13,778	10,642	24,420	20.7%		2,845	6,897
CAMDEN	1,219	37,659	38,878	19.6%		42,509	34,595	77,104	19.1%		7,935	19,562
CAPE MAY	76	4,319	4,395	9.9%		4,929	3,550	8,479	13.7%		981	2,301
CUMBERLAND	266	13,580	13,846	15.9%		14,504	14,511	29,015	16.3%		2,704	7,161
ESSEX	1,676	70,177	71,853	39.8%	Δ	76,646	61,505	138,151	35.3%	Δ	15,608	31,134
GLOUCESTER	232	9,439	9,671	10.5%		10,738	8,307	19,045	12.5%	*	2,208	6,045
HUDSON	1,392	63,499	64,891	26.8%		70,894	50,043	120,937	24.0%		19,082	29,241
HUNTERDON	44	1,790	1,834	8.7%	*	1,939	1,188	3,127	14.1%		567	1,041
MERCER	646	18,785	19,431	21.4%		19,338	16,857	36,195	21.5%		4,313	10,627
MIDDLESEX	555	29,825	30,380	15.3%		33,053	25,184	58,237	17.1%		12,035	17,202
MONMOUTH	185	18,064	18,249	17.5%		18,610	14,191	32,801	18.7%		5,513	10,055
MORRIS	90	8,545	8,635	14.3%		9,505	5,309	14,814	18.3%		4,098	5,378
OCEAN	311	19,470	19,781	16.8%		24,520	31,872	56,392	22.5%		5,184	10,480
PASSAIC	1,071	46,223	47,294	7.0%	*	52,008	46,155	98,163	7.6%	*	13,547	21,163
SALEM	124	4,239	4,363	11.2%		4,948	4,212	9,160	14.1%		843	2,383
SOMERSET	179	5,942	6,121	15.2%		6,427	4,974	11,401	18.0%		2,090	3,482
SUSSEX	31	2,319	2,350	7.1%	*	2,773	1,674	4,447	9.6%	*	712	1,610
UNION	426	26,410	26,836	39.9%	Δ	28,341	23,528	51,869	38.8%	Δ	7,500	12,540
WARREN	131	4,336	4,467	19.3%		5,023	3,788	8,811	21.7%		1,010	2,486
NJ TOTAL	9,833	440,525	450,358	21.8%		490,430	393,310	883,740	21.8%		126,085	227,479

Δ=higher caseload % change

*=lower caseload % change

Total NJ SNAP Recipients
JUNE 2021 by County

Data is derived from NJ MMIS Shared Data Warehouse.

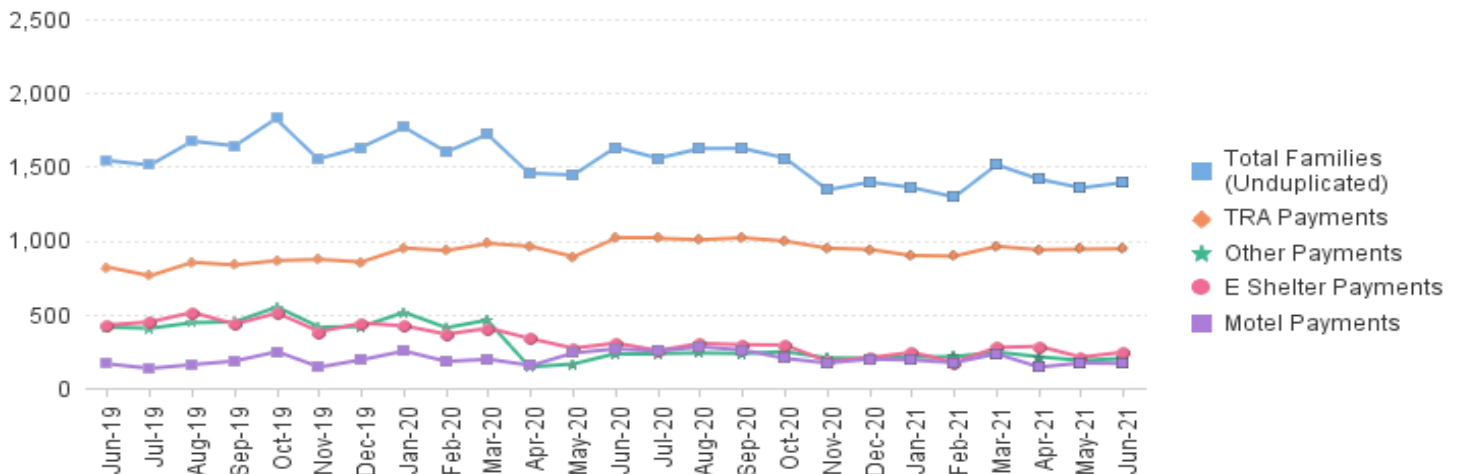
Effective July 2013 this data query source was converted to the SDW.

* Age 60+ and People with a disability columns are independent subsets of total persons. An individual might appear in both columns

TABLE 8 :
EMERGENCY ASSISTANCE TOTAL NUMBER OF ELIGIBLE FAMILIES RECEIVING EMERGENCY ASSISTANCE PAYMENTS
(STATEWIDE) JUNE 2019 THROUGH JUNE 2021 - STATEWIDE

		Total WFNJ/EA Families (Undupl)	% CHNG (1 YR)	Temp Rent Asst. Payments (Undupl)	% CHNG (1 YR)	Motel Housing Payments (Undupl)	% CHNG (1 YR)	Shelter/Transitional Housing Payments (Undupl)	% CHNG (1 YR)	Other WFNJ/EA Payments (Undupl)	% CHNG (1 YR)
2019	JUN	1,541	-8.1%	819	-7.7%	164	36.7%	427	-9.7%	413	-0.5%
	JUL	1,511	-9.3%	761	-11.6%	133	-28.1%	448	-0.7%	405	-9.4%
	AUG	1,673	3.1%	852	-0.6%	159	14.4%	513	16.3%	443	0.0%
	SEP	1,641	6.8%	834	4.4%	183	-2.7%	433	20.3%	449	7.2%
	OCT	1,830	12.8%	864	6.1%	247	30.0%	508	17.6%	549	16.8%
	NOV	1,555	-3.7%	871	2.2%	142	-11.3%	382	-16.2%	413	-1.0%
	DEC	1,632	0.7%	855	6.2%	192	-14.3%	440	-0.9%	417	-1.9%
	2019 Average	1,578		827		164		427		438	
2020	JAN	1,767	15.7%	949	13.8%	251	59.9%	422	16.9%	513	2.6%
	FEB	1,600	15.1%	932	23.6%	181	20.7%	365	24.6%	409	-4.7%
	MAR	1,723	14.5%	980	16.3%	195	62.5%	406	-3.1%	462	19.4%
	APR	1,455	-5.9%	960	18.4%	153	-12.1%	334	-23.9%	144	-64.0%
	MAY	1,444	-9.1%	890	7.9%	238	63.0%	270	-41.0%	163	-63.5%
	JUN	1,632	5.9%	1,014	23.8%	265	61.6%	305	-28.6%	234	-43.3%
	JUL	1,557	3.0%	1,014	33.2%	251	88.7%	254	-43.3%	234	-42.2%
	AUG	1,623	-3.0%	1,005	18.0%	279	75.5%	303	-40.9%	238	-46.3%
	SEP	1,624	-1.0%	1,018	22.1%	258	41.0%	294	-32.1%	234	-47.9%
	OCT	1,558	-14.9%	996	15.3%	201	-18.6%	292	-42.5%	247	-55.0%
	NOV	1,343	-13.6%	948	8.8%	170	19.7%	180	-52.9%	204	-50.6%
	DEC	1,395	-14.5%	939	9.8%	196	2.1%	206	-53.2%	201	-51.8%
	2020 Average	1,560		970		220		303		274	
2021	JAN	1,359	-23.1%	898	-5.4%	190	-24.3%	242	-42.7%	210	-59.1%
	FEB	1,294	-19.1%	894	-4.1%	172	-5.0%	174	-52.3%	213	-47.9%
	MAR	1,513	-12.2%	960	-2.0%	232	19.0%	275	-32.3%	244	-47.2%
	APR	1,415	-2.7%	937	-2.4%	142	-7.2%	283	-15.3%	212	47.2%
	MAY	1,356	-6.1%	941	5.7%	170	-28.6%	209	-22.6%	187	14.7%
	JUN	1,393	-14.6%	944	-6.9%	167	-37.0%	244	-20.0%	201	-14.1%
	2021 Average to date	1,388		929		179		238		211	

NJ STATEWIDE
Families Receiving Emergency Assistance
JUNE 2019 THROUGH JUNE 2021



WFNJ/EA data is derived from NJ MMIS Shared Data Warehouse.
 Effective July 2013 this data query source was converted to the SDW.

* Effective Feb '11 Transitional Housing Payments were removed from 'Other EA Payments' and added to 'Shelter Payments'.

TABLE 9 :
EMERGENCY ASSISTANCE (BY COUNTY)
TOTAL NUMBER OF ELIGIBLE FAMILIES RECEIVING EMERGENCY ASSISTANCE PAYMENTS BY COUNTY (UNDUPLICATED CASES) FOR JUNE 2021

County	TOTAL WFNJ/EA Families (Undupl)	% CHNG From JUN 20		Temp Rent Asst. Payments (Undupl)	Motel Housing Payments (Undupl)	Shelter/Transitional Housing Payments (Undupl)	Other WFNJ/EA Payments (Undupl)	SSI Receipients Receiving EA **
ATLANTIC	61	-37.1%		58	1	0	2	39
BERGEN	41	-40.6%	*	33	4	1	5	56
BURLINGTON	53	-38.4%		5	2	46	0	50
CAMDEN	37	-21.3%		18	10	8	2	25
CAPE MAY	23	21.1%	Δ	9	13	0	1	8
CUMBERLAND	0	0%		0	0	0	0	1
ESSEX	148	-13.5%		45	0	82	25	16
GLOUCESTER	11	-31.3%		5	0	1	5	4
HUDSON	211	11.1%	Δ	179	12	23	46	94
HUNTERDON	7	-30.0%		7	0	0	1	10
MERCER	72	-32.1%		48	15	5	13	53
MIDDLESEX	146	7.4%	Δ	97	39	6	36	57
MONMOUTH	26	-18.8%		1	1	25	1	39
MORRIS	12	-53.8%	*	10	2	0	0	6
OCEAN	108	-6.9%		83	22	0	31	31
PASSAIC	244	-12.9%		215	8	20	14	19
SALEM	0	0%		0	0	0	0	1
SOMERSET	72	-10.0%		60	4	7	11	64
SUSSEX	0	0%		0	0	0	0	1
UNION	106	-6.2%		60	31	19	7	91
WARREN	15	-50.0%	*	11	3	1	1	2
NJ Total	1,393	-14.6%		944	167	244	201	667

Δ=higher caseload % change

*=lower caseload % change

** SSI-EA includes pay codes 22 and 24, data is derived from NJ Division of Family Development FAMIS Report #FM430-03A

WFNJ/EA data is derived from NJ MMIS Shared Data Warehouse.

Effective July 2013 this data query source was converted to the SDW.

Number WFNJ Families Receiving EA by County
JUNE 2021

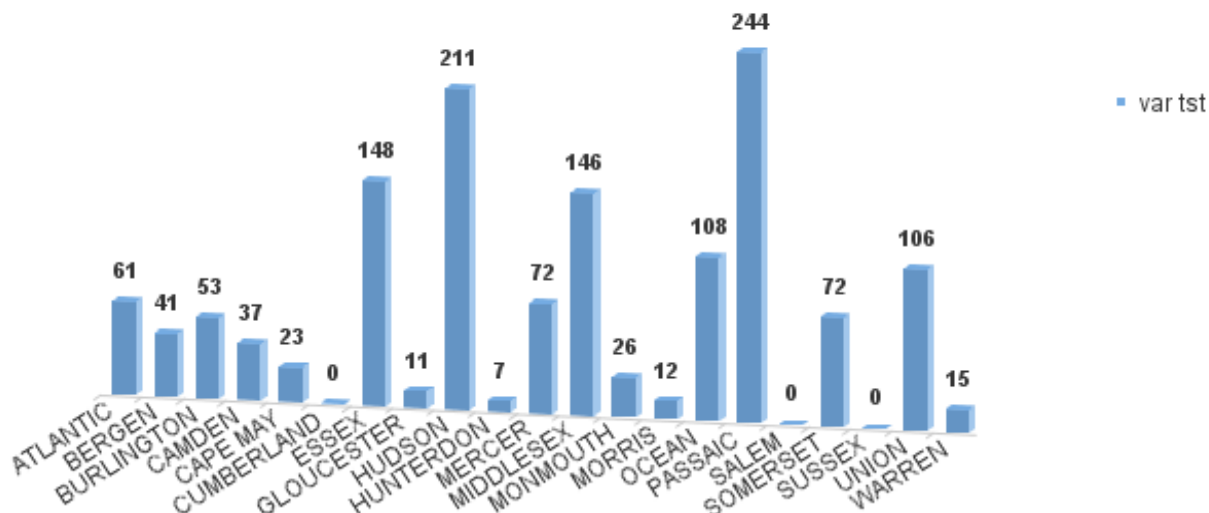
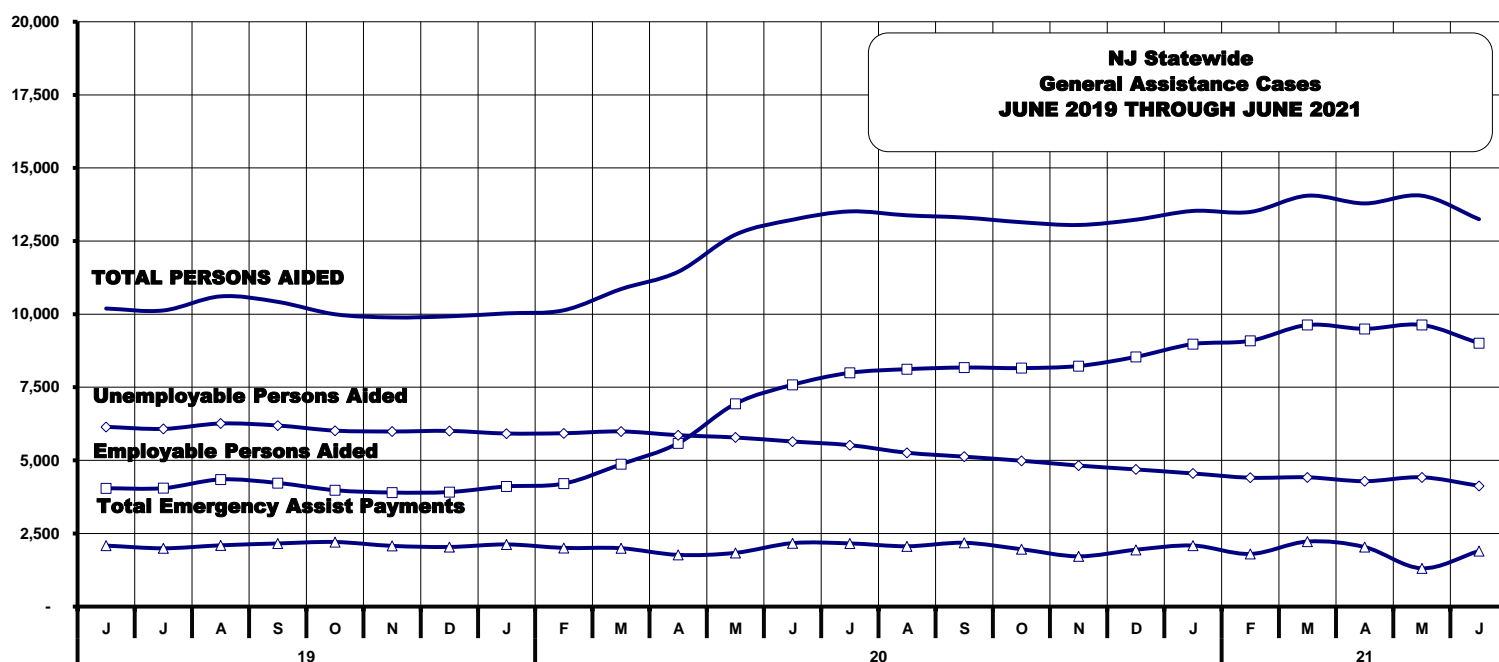


TABLE 10: GENERAL ASSISTANCE PROGRAM

NUMBER OF EMPLOYABLE AND UNEMPLOYABLE RECIPIENTS AND EMERGENCY ASSISTANCE PAYMENTS - STATEWIDE

JUNE 2019 THROUGH JUNE 2021

	Total Cases						Emergency Assistance Cases			
	Employable	% Chng (1 Yr)	Unemployable	% Chng (1 Yr)	Total	% Chng (1 Yr)	Temporary Rental Assistance	Other GA-EA	Total	% Chng (1 Yr)
2019 JUN	4,047	-17.3%	6,147	-12.8%	10,194	-14.7%	920	1,166	2,086	3.5%
JUL	4,050	-15.1%	6,077	-13.0%	10,127	-13.8%	912	1,082	1,994	-1.1%
AUG	4,348	-12.4%	6,261	-13.4%	10,609	-13.0%	885	1,210	2,095	4.5%
SEP	4,228	-5.5%	6,193	-9.4%	10,421	-7.9%	884	1,275	2,159	10.3%
OCT	3,980	-11.1%	6,017	-11.8%	9,997	-11.5%	890	1,319	2,209	11.1%
NOV	3,900	-9.6%	5,988	-9.9%	9,888	-9.8%	878	1,198	2,076	8.1%
DEC	3,918	-4.7%	6,008	-8.3%	9,925	-6.9%	900	1,139	2,039	8.5%
2019 AVERAGE	4,124		6,182		10,306		898	1,223	2,121	
2020 JAN	4,109	-2.5%	5,919	-8.3%	10,028	-6.0%	910	1,216	2,126	11.7%
FEB	4,206	0.1%	5,928	-6.0%	10,134	-3.6%	875	1,132	2,007	5.7%
MAR	4,868	15.5%	5,990	-4.5%	10,858	3.5%	919	1,077	1,996	0.8%
APR	5,587	32.2%	5,862	-6.2%	11,449	9.3%	913	855	1,768	-18.3%
MAY	6,936	66.9%	5,783	-6.9%	12,719	22.7%	929	909	1,838	-35.4%
JUN	7,585	87.4%	5,645	-8.2%	13,230	29.8%	916	1,255	2,171	4.1%
JUL	7,994	97.4%	5,520	-9.2%	13,514	33.4%	905	1,256	2,161	8.4%
AUG	8,119	86.7%	5,261	-16.0%	13,380	26.1%	875	1,188	2,063	-1.5%
SEP	8,176	93.4%	5,127	-17.2%	13,303	27.7%	849	1,333	2,182	1.1%
OCT	8,156	104.9%	4,988	-17.1%	13,144	31.5%	855	1,107	1,962	-11.2%
NOV	8,228	111.0%	4,822	-19.5%	13,050	32.0%	835	884	1,719	-17.2%
DEC	8,540	118.0%	4,691	-21.9%	13,231	33.3%	833	1,111	1,944	-4.7%
2020 AVERAGE	6,875		5,461		12,337		885	1,110	1,995	
2021 JAN	8,978	118.5%	4,553	-23.1%	13,531	34.9%	848	1,240	2,088	-1.8%
FEB	9,089	116.1%	4,407	-25.7%	13,496	33.2%	809	991	1,800	-10.3%
MAR	9,630	97.8%	4,421	-26.2%	14,051	29.4%	819	1,405	2,224	11.4%
APR	9,499	70.0%	4,288	-26.9%	13,787	20.4%	832	1,204	2,036	15.2%
MAY	9,630	38.8%	4,421	-23.6%	14,051	10.5%	819	491	1,310	-28.7%
JUN	9,007	18.7%	4,130	-32.8%	13,247	0.1%	794	1,108	1,902	-12.4%
2021 AVERAGE TO DATE	9,306		4,370		13,694		820	1,073	1,893	



**TABLE 11: EMPLOYABLE AND UNEMPLOYABLE CASES
GENERAL AND EMERGENCY ASSISTANCE CASES RECEIVING PAYMENTS BY COUNTY
JUNE 2021**

	Total Cases						Emergency Assistance Cases			
	Employable	% Chng (1 Yr)	Unemployable	% Chng (1 Yr)	Total	% Chng (1 Yr)	Temporary Rental Assistance	Other GA-EA	Total	% Chng (1 Yr)
ATLANTIC	795	14.4%	206	-25.9%	1,001	4.3%	75	21	96	-33.3%
BERGEN	309	-7.5%	194	-56.0%	503	-22.4%	66	55	121	9.0%
BURLINGTON	391	22.2%	203	-43.6%	594	-10.4%	14	101	115	-5.7%
CAMDEN	1,219	48.8%	483	-29.5%	1,702	14.5% Δ	49	95	144	-14.8%
CAPE MAY	87	-33.1%	45	-40.0%	132	-33.0%	20	33	53	6.0%
CUMBERLAND	308	6.2%	91	-59.0%	399	-17.9%	0	3	3	-83.3% *
ESSEX	969	8.0%	334	-27.9%	1,303	-4.5%	24	33	57	-73.2% *
GLOUCESTER	143	-45.2%	138	-31.3%	281	-37.3% *	2	20	22	-62.7% *
HUDSON	1,955	55.3%	540	-21.9%	2,495	31.5% Δ	93	135	228	61.7% Δ
HUNTERDON	65	-38.7%	47	-25.4%	112	-40.4% *	13	12	25	-16.7%
MERCER	387	38.2%	286	-33.9%	673	2.1%	47	27	74	-3.9%
MIDDLESEX	455	16.1%	305	-22.6%	760	2.2%	92	97	189	24.3% Δ
MONMOUTH	221	31.5%	167	-13.5%	388	4.9%	3	76	79	12.9%
MORRIS	141	-9.6%	150	-25.0%	291	-13.4%	53	27	80	-25.2%
OCEAN	310	-2.8%	229	-23.9%	539	-8.2%	64	82	146	-12.0%
PASSAIC	419	22.9%	329	-42.1%	748	-7.9%	48	33	81	-35.2%
SALEM	128	8.5%	53	-17.2%	181	-5.2%	1	1	2	-33.3%
SOMERSET	126	-33.7%	57	-1.7%	183	-30.9%	40	27	67	-39.6%
SUSSEX	54	-29.9%	24	-51.0%	78	-37.6% *	0	19	19	-20.8%
UNION	513	23.6%	160	-46.8%	673	0.6%	66	179	245	16.7% Δ
WARREN	12	-33.3%	89	-16.8%	211	58.6% Δ	24	32	56	-18.8%
NJ TOTAL	9,007	18.7%	4,130	-32.8%	13,247	0.1%	794	1,108	1,902	-12.4%

Δ = ↑ Caseload %

* = ↓ Caseload %

Source: NJ Division of Family Development, GA Fiscal Unit

**TABLE 12:
OFFICE OF
CHILD SUPPORT
SERVICES**

**OFFICE OF CHILD SUPPORT SERVICES
QUARTERLY PERFORMANCE REPORT
STATE SUMMARY
TITLE IV-D SOURCE COLLECTION REPORT
Comparison of Quarter-3 (FFY 2020 vs. FFY 2021)**

COLLECTION SOURCE	TOTAL 4/1/2020 - 6/30/2020	% OF TOTAL COLLECTIONS	TOTAL 4/1/2021 - 6/30/2021	% OF TOTAL COLLECTIONS	DOLLAR CHANGE	% CHANGE
FEDERAL TAX	\$79,593,959	22.14%	\$26,914,603	8.34%	\$ (52,679,356)	-66.19%
STATE TAX	\$3,088,124	0.86%	\$3,024,509	0.94%	\$ (63,615)	-2.06%
UIB	\$27,887,771	7.76%	\$31,217,516	9.68%	\$ 3,329,745	11.94%
INC WITHHOLD	\$190,452,576	52.97%	\$188,440,986	58.42%	\$ (2,011,590)	-1.06%
FROM OTHER STATES	\$11,621,633	3.23%	\$12,916,085	4.00%	\$ 1,294,452	11.14%
ADMIN ENFORCEMENT	\$1,196,433	0.33%	\$6,297,192	0.02%	\$ 5,100,759	426.33%
OTHER	\$45,683,671	12.71%	\$53,729,487	16.66%	\$ 8,045,816	17.61%
TOTAL COLLECTIONS*	\$359,524,167	100%	\$322,540,378	100%	\$ (36,983,789)	-10.29%
DISBURSED COLLECTIONS**	\$311,551,004		\$278,577,027		\$ (32,973,977)	-10.58%

* Includes collections on both current support and arrears.

** Includes collections on both current support and arrears; also includes money sent to other states.

SOURCE: NJKIDS (Based on Federal Quarterly Report of Collections - OCSE-34A except Disbursed Collections)

Disbursed Collections obtained from Federal Data Report - OCSE-157, which is reported annually to Congress and used in the calculation of incentive dollars earned by each state.

TABLE 13:
OFFICE OF
CHILD SUPPORT
SERVICES

OFFICE OF CHILD SUPPORT SERVICES
STATE SUMMARY
TITLE IV-D PATERNITY ESTABLISHMENT REPORT
Comparison of June (FFY 2020 vs. FFY 2021)

County	JUNE 2020			JUNE 2021			Increase or Decrease (-) from FFY 2020 to FFY 2021
	Total Children Born Out of Wedlock*	Number of Paternities Established	Percent of Paternities Established	Total Children Born Out of Wedlock*	Number of Paternities Established	Percent of Paternities Established	
Atlantic	6,131	6,087	99.3%	5,714	5,692	99.6%	0.3%
Bergen	3,159	3,100	98.1%	2,861	2,821	98.6%	0.5%
Burlington	4,835	4,717	97.6%	4,441	4,326	97.4%	-0.1%
Camden	15,557	15,134	97.3%	14,380	13,984	97.2%	0.0%
Cape May	1,218	1,207	99.1%	1,097	1,095	99.8%	0.7%
Cumberland	6,495	6,439	99.1%	6,092	6,029	99.0%	-0.2%
Essex	24,689	23,457	95.0%	22,132	21,094	95.3%	0.3%
Gloucester	4,274	4,230	99.0%	3,938	3,897	99.0%	0.0%
Hudson	9,915	9,531	96.1%	8,941	8,674	97.0%	0.9%
Hunterdon	257	255	99.2%	223	222	99.6%	0.3%
Mercer	6,951	6,764	97.3%	6,215	6,050	97.3%	0.0%
Middlesex	6,267	6,100	97.3%	5,732	5,570	97.2%	-0.2%
Monmouth	4,983	4,848	97.3%	4,469	4,333	97.0%	-0.3%
Morris	1,269	1,257	99.1%	1,123	1,113	99.1%	0.1%
Ocean	4,762	4,649	97.6%	4,369	4,295	98.3%	0.7%
Passaic	10,170	9,793	96.3%	9,046	8,793	97.2%	0.9%
Salem	2,665	2,588	97.1%	2,478	2,394	96.6%	-0.5%
Somerset	1,390	1,350	97.1%	1,234	1,200	97.2%	0.1%
Sussex	513	510	99.4%	453	449	99.1%	-0.3%
Union	9,999	9,560	95.6%	9,299	8,895	95.7%	0.0%
Warren	913	907	99.3%	812	803	98.9%	-0.5%
NJ TOTALS	126,412	122,483	96.9%	115,049	111,729	97.1%	0.2%

SOURCE: NJKiDS (Based on Federal Performance Measures - OCSE-157)

* Information on Out of Wedlock Births obtained from NJ Bureau of Vital Statistics

TABLE 14:
OFFICE OF
CHILD SUPPORT
SERVICES

OFFICE OF CHILD SUPPORT SERVICES
STATE SUMMARY
TITLE IV-D REPORT OF CASES WITH ORDERS
Comparison of June (FFY 2020 vs. FFY 2021)

County	JUNE 2020			JUNE 2021			Increase or Decrease (-) from FFY 2020 to FFY 2021
	Total Cases	Cases with Orders	% of Cases with Orders	Total Cases	Cases with Orders	% of Cases with Orders	
Atlantic	11,250	10,376	92.2%	10,480	9,792	93.4%	1.2%
Bergen	11,413	11,116	97.4%	10,676	10,463	98.0%	0.6%
Burlington	12,419	11,688	94.1%	11,567	11,047	95.5%	1.4%
Camden	27,520	25,732	93.5%	25,799	24,652	95.6%	2.1%
Cape May	2,900	2,708	93.4%	2,696	2,553	94.7%	1.3%
Cumberland	11,472	11,025	96.1%	10,849	10,472	96.5%	0.4%
Essex	40,344	34,205	84.8%	36,278	32,052	88.4%	3.6%
Gloucester	9,916	9,534	96.1%	9,321	9,044	97.0%	0.9%
Hudson	19,385	17,333	89.4%	17,819	16,197	90.9%	1.5%
Hunterdon	1,370	1,290	94.2%	1,289	1,207	93.6%	-0.5%
Mercer	13,021	11,809	90.7%	11,876	10,968	92.4%	1.7%
Middlesex	16,572	15,579	94.0%	15,467	14,622	94.5%	0.5%
Monmouth	13,030	12,491	95.9%	11,969	11,499	96.1%	0.2%
Morris	5,571	5,442	97.7%	5,196	5,077	97.7%	0.0%
Ocean	14,017	13,506	96.4%	13,042	12,632	96.9%	0.5%
Passaic	19,546	16,255	83.2%	17,247	15,349	89.0%	5.8%
Salem	4,106	3,938	95.9%	3,789	3,646	96.2%	0.3%
Somerset	4,452	4,210	94.6%	4,027	3,855	95.7%	1.2%
Sussex	2,513	2,460	97.9%	2,321	2,296	98.9%	1.0%
Union	17,441	16,596	95.2%	16,444	15,750	95.8%	0.6%
Warren	2,851	2,681	94.0%	2,608	2,505	96.1%	2.0%
NJ TOTALS	261,109	239,974	91.9%	240,760	225,678	93.7%	1.8%

SOURCE: NJKIDS (Based on Federal Performance Measures - OCSE-157)

**TABLE 15:
OFFICE OF
CHILD SUPPORT
SERVICES**

**OFFICE OF CHILD SUPPORT SERVICES
STATE SUMMARY
TITLE IV-D COLLECTIONS ON CURRENT SUPPORT**
Comparison of June (FFY 2020 vs. FFY 2021)

County	JUNE 2020			JUNE 2021			Increase or Decrease (-) from FFY 2020 to FFY 2021
	Total Current Support Due	Total Current Support Distributed	Total Collection Rate	Total Current Support Due	Total Current Support Distributed	Total Collection Rate	
Atlantic	\$3,612,429	\$2,454,233	67.9%	\$3,484,690	\$2,451,291	70.3%	2.4%
Bergen	\$8,075,352	\$6,127,435	75.9%	\$7,582,234	\$5,959,003	78.6%	2.7%
Burlington	\$5,499,497	\$3,907,213	71.0%	\$5,137,480	\$3,789,824	73.8%	2.7%
Camden	\$7,630,139	\$4,773,379	62.6%	\$7,425,409	\$4,793,594	64.6%	2.0%
Cape May	\$1,038,283	\$743,812	71.6%	\$981,698	\$720,247	73.4%	1.7%
Cumberland	\$2,943,862	\$1,799,338	61.1%	\$2,843,506	\$1,844,398	64.9%	3.7%
Essex	\$10,356,078	\$6,387,482	61.7%	\$9,837,036	\$6,378,221	64.8%	3.2%
Gloucester	\$3,980,718	\$2,767,006	69.5%	\$3,833,044	\$2,737,647	71.4%	1.9%
Hudson	\$6,994,488	\$4,803,623	68.7%	\$6,715,554	\$4,820,350	71.8%	3.1%
Hunterdon	\$1,170,798	\$953,404	81.4%	\$1,089,968	\$907,680	83.3%	1.8%
Mercer	\$3,940,574	\$2,516,277	63.9%	\$3,681,331	\$2,513,306	68.3%	4.4%
Middlesex	\$7,421,965	\$5,283,471	71.2%	\$6,901,690	\$5,101,450	73.9%	2.7%
Monmouth	\$6,997,452	\$5,279,364	75.4%	\$6,428,571	\$4,913,496	76.4%	1.0%
Morris	\$4,242,883	\$3,241,888	76.4%	\$3,973,132	\$3,055,611	76.9%	0.5%
Ocean	\$6,241,059	\$4,644,065	74.4%	\$5,915,168	\$4,542,437	76.8%	2.4%
Passaic	\$6,247,131	\$4,138,079	66.2%	\$6,007,934	\$4,112,785	68.5%	2.2%
Salem	\$1,065,331	\$665,258	62.4%	\$1,005,752	\$641,931	63.8%	1.4%
Somerset	\$2,917,599	\$2,355,302	80.7%	\$2,637,076	\$2,265,234	85.9%	5.2%
Sussex	\$1,693,764	\$1,349,613	79.7%	\$1,620,707	\$1,321,728	81.6%	1.9%
Union	\$6,579,306	\$4,629,214	70.4%	\$6,347,308	\$4,670,000	73.6%	3.2%
Warren	\$1,258,116	\$919,649	73.1%	\$1,164,096	\$884,994	76.0%	2.9%
NJ TOTALS	\$99,906,827	\$69,739,104	69.8%	\$94,613,385	\$68,425,228	72.3%	2.5%

SOURCE: NJKiDS (Based on Federal Performance Measures - OCSE-157)

TABLE 16:
OFFICE OF
CHILD SUPPORT
SERVICES

OFFICE OF CHILD SUPPORT SERVICES
STATE SUMMARY
TITLE IV-D CASES ARREARS COLLECTION REPORT

Comparison of June (FFY 2020 vs. FFY 2021)

County	JUNE 2020			JUNE 2021			Increase or Decrease (-) from FFY 2020 to FFY 2021
	Total Cases with Arrears	Total Amount Collected	Average Arrears Collection per Case	Total Cases with Arrears	Total Amount Collected	Average Arrears Collection per Case	
Atlantic	6,967	\$1,041,852	\$149.54	6,703	\$1,152,002	\$171.86	\$22.32
Bergen	7,316	\$1,459,287	\$199.47	6,931	\$1,687,561	\$243.48	\$44.02
Burlington	7,927	\$1,316,116	\$166.03	7,505	\$1,402,615	\$186.89	\$20.86
Camden	16,112	\$2,399,043	\$148.90	15,606	\$2,582,257	\$165.47	\$16.57
Cape May	1,926	\$327,124	\$169.85	1,837	\$292,225	\$159.08	-\$10.77
Cumberland	7,204	\$1,048,820	\$145.59	6,841	\$1,088,001	\$159.04	\$13.45
Essex	21,922	\$3,491,869	\$159.29	20,608	\$3,894,972	\$189.00	\$29.72
Gloucester	6,512	\$1,180,726	\$181.32	6,169	\$1,198,069	\$194.21	\$12.89
Hudson	11,890	\$1,758,545	\$147.90	11,107	\$1,948,405	\$175.42	\$27.52
Hunterdon	803	\$199,276	\$248.16	793	\$250,280	\$315.61	\$67.45
Mercer	8,011	\$1,267,648	\$158.24	7,646	\$1,308,870	\$171.18	\$12.95
Middlesex	10,402	\$1,867,631	\$179.55	9,851	\$1,931,858	\$196.11	\$16.56
Monmouth	8,464	\$1,675,410	\$197.95	7,689	\$1,715,645	\$223.13	\$25.18
Morris	3,696	\$775,578	\$209.84	3,453	\$934,027	\$270.50	\$60.65
Ocean	8,796	\$1,746,490	\$198.56	8,278	\$1,705,192	\$205.99	\$7.44
Passaic	11,133	\$1,701,752	\$152.86	10,677	\$1,964,676	\$184.01	\$31.15
Salem	2,484	\$346,829	\$139.63	2,334	\$299,013	\$128.11	-\$11.51
Somerset	2,868	\$566,832	\$197.64	2,588	\$777,686	\$300.50	\$102.86
Sussex	1,693	\$337,806	\$199.53	1,559	\$322,478	\$206.85	\$7.32
Union	11,005	\$1,849,202	\$168.03	10,437	\$2,080,940	\$199.38	\$31.35
Warren	1,708	\$278,892	\$163.29	1,608	\$283,846	\$176.52	\$13.24
NJ TOTALS	158,839	\$26,636,728	\$167.70	150,220	\$28,820,618	\$191.86	\$24.16

SOURCE: OCSE-157 Child Support Enforcement Annual Data Report

Table 17**WORK FIRST NEW JERSEY STATISTICAL SUMMARY****WFNJ****JUNE 2021**

COUNTY	EMPLOYMENT DIRECTED ACTIVITIES			EMPLOYED OPEN (WFNJ RECIPIENT)	SUPPORT SERVICES ON ACTIVE CASE		CLOSED FOR EMPLOYMENT THIS MONTH	POST ASSISTANCE CHILD CARE
	CWEP	ALL OTHER TRAINING	JOB SEARCH		CHILD CARE	TRAINING REL. EXPENSES		
ATLANTIC	0	20	0	11	3	32	4	20
BERGEN	1	3	0	1	15	0	4	8
BURLINGTON	0	8	0	0	5	0	5	18
CAMDEN	23	136	0	14	30	0	6	21
CAPE MAY	0	2	0	3	3	0	0	6
CUMBERLAND	0	22	0	3	1	3	0	2
ESSEX	31	160	0	46	43	35	8	44
GLOUCESTER	0	3	0	5	3	0	2	7
HUDSON	14	158	6	25	44	1	8	23
HUNTERDON	0	0	0	1	2	0	0	0
MERCER	26	40	4	15	37	2	2	37
MIDDLESEX	0	27	1	17	6	0	3	35
MONMOUTH	0	6	1	9	19	1	4	20
MORRIS	0	8	0	4	2	0	1	5
OCEAN	1	16	2	5	9	0	1	19
PASSAIC	0	28	2	10	33	6	9	6
SALEM	0	2	0	0	2	0	0	0
SOMERSET	0	2	1	8	11	1	0	10
SUSSEX	0	2	0	1	1	0	0	1
UNION	0	32	0	6	13	2	5	4
WARREN	0	13	0	2	6	0	0	1
STATE TOTAL	96	688	17	186	288	83	62	287

Data is derived from NJ Division of Family Development's FAMIS Reports RM064-01 & RM703-51, AdHoc Reports 5549 & 5598 and SDW Report WR00022WZ_CC

**DIVISION OF FAMILY DEVELOPMENT CURRENT PROGRAM STATISTICS
JUNE 2021**

ACRONYMS

EMERGENCY ASSISTANCE (EA) - Payments to those eligible for WFNJ/TANF or WFNJ/GA, authorized during the 30 consecutive days immediately following the emergency (defined as a substantial loss of shelter, food, clothing, or household furnishings by fire, flood or other similar disaster) or if eligible individual or family is in an imminent or actual state of homelessness.

NJ SNAP - Formerly the Food Stamp Program, now known as NJ SNAP (NJ Supplemental Nutrition Assistance Program) authorized by Congress as a nutritional supplement program to provide low income households with more food of greater variety and better nutrition. Program eligibility is based on household income, resources, and expenses for medical, shelter, and dependent care. CWA staff refers certain recipients to the New Jersey Department of Labor for participation in the Food Stamp Employment

FAMIS: Family Assistance Management Information System

GAAS: General Assistance Automated System

NJKIDS: New Jersey Kids Deserve Support (Child Support Information Management System)

NJ MMIS SHARED DATA WAREHOUSE: The Shared Data Warehouse (SDW) is the repository for New Jersey's DFD and Medicaid data. Since 2003, OptumInsight has administered the SDW and provided access to the data through a reporting tool known as Business Objects.

OMEGA: Online Management of Economic Goal Achievement

SSI-EA: Supplemental Security Income-Emergency Assistance

WFNJ: Work First New Jersey - Fully implemented July 1, 1997, this is New Jersey's welfare reform program which responds to the requirements of the Federal Personal Responsibility and Work Opportunity Reconciliation Act (**PRWORA**) of 1996. PRWORA established Temporary Assistance for Needy Families (**TANF**) as the replacement for AFDC cash assistance. WFNJ includes two segments, **WFNJ/TANF** for families with children, and **WFNJ/GA** (General Assistance) for single adults and couples without dependent children. WFNJ emphasizes achieving self-sufficiency and limits lifetime

**DIVISION OF FAMILY DEVELOPMENT CURRENT PROGRAM STATISTICS
JUNE 2021**

EXPLANATORY NOTES

The Department of Human Services Division of Family Development provides basic income and an opportunity to achieve self-sufficiency for individuals and families served by the Division's programs. The Division provides leadership, direction and supervision to those public agencies responsible for administering those programs and plans for and develops policies to promote self-sufficiency.

WFNJ STATISTICAL SUMMARY (TABLE 17)

Employment Directed Activities (EDA) - From Activities Summary Report (OMEGA report # RM064). Unduplicated count of persons participating in Community Work Experience Program (CWEP), All Other Training, or Job Search.

Number of Persons Employed This Month, Still Receiving TANF - Individuals with open "empl" activity on OMEGA. Ad hoc report.

Participants Receiving Child Care Services - From Issuance Disbursement Summary (OMEGA report # RM703). Total number of active participants who show receipt of Child Care.

Number of Persons Closed on FAMIS Due to Employment - From FAMIS report #5549-RM-2

Post TANF and Receiving Child Care - Persons no longer in receipt of TANF but still receiving child care. From Share Data Warehouse Child Care case count based on Child Care payments (SDW report WR00022WZ_CC).