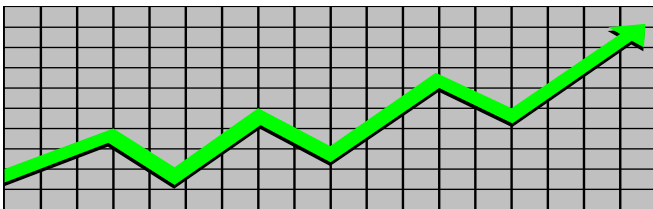


State of New Jersey
Department of Human Services
Division of Family Development

CURRENT PROGRAM STATISTICS



June 2022
Natasha Johnson, Assistant Commissioner

TABLE OF CONTENTS

HIGHLIGHTS:

WFNJ/TANF	ii
NJ SNAP	ii
EMERGENCY ASSISTANCE	ii
GENERAL ASSISTANCE	iii
GA Emergency Assistance.....	iii
GA Program.....	iii
CHILD SUPPORT SERVICES	iii
WORK FIRST NEW JERSEY (WFNJ)	iii
STATISTICS- BY STATE & COUNTY	1
Table 1: WFNJ/TANF Families & Persons (NJ Statewide) June 2020 to 2022.....	1
Table 2: WFNJ/TANF Families (by County)- June 2022.....	2
Table 2B: WFNJ/TANF Persons, Adults, & Children (by County)- June 2022.....	3
Table 3: TANF Work Participation Rates Over 12 Month Period (by County)- June 2022.....	4
Table 4: TANF Work Participation Rates Over 12 Month Period (NJ Statewide)- June 2022.....	5
Table 5: NJ SNAP Households/Persons (NJ Statewide) June 2020 to 2022.....	6
Table 6: NJ SNAP Recipient Trends (NJ Statewide) June 2020 to 2022.....	7
Table 7: NJ SNAP Households/Persons (by County)- June 2022.....	8
Table 8: Emergency Assistance Program (NJ Statewide) June 2020 to 2022.....	9
Table 9: Emergency Assistance Program (by County)- June 2022.....	10
Table 10: General Assistance Program (NJ Statewide) June 2020 to 2022.....	11
Table 11: General Assistance Program (by County)- June 2022.....	12
Table 12: Child Support Services Distributions (NJ Statewide) FFY 2022.....	13
Table 14: Child Support Services Cases With Orders- June 2022.....	14
Table 15: Child Support Services Collections On Current Support- June 2022.....	15
Table 16: Child Support Services Cases With Payments On Arrears- June 2022.....	16
Table 17: WFNJ Statistical Summary- June 2022.....	17
ACRONYMS	18
EXPLANATORY NOTES	19
WFNJ Statistical Summary (Table 17).....	19

DIVISION OF FAMILY DEVELOPMENT CURRENT PROGRAM STATISTICS

JUNE 2022

Each month the Division of Family Development publishes its program statistics for: WFNJ/TANF, NJ SNAP, Emergency Assistance, General Assistance, and Child Support Services. When possible, information is provided separately for children and adults. Many tables also provide trend data with information broken down by county for readers to consider. This report is compiled and prepared by The Bureau of Research & Reporting.

WFNJ/TANF

- As of the end of June, the TANF caseload had increased by 1174 cases, from 9,497 in June 2021 to 10,671 in June 2022; an increase of 12.4%.
- The counties with caseloads that increased the most since June 2021 were Salem (43.1%), Monmouth (37.6%), and Union (30.7%).
- The counties with caseloads that decreased the most since June 2021 were Warren (-27%), Essex (-15.3%), and Hunterdon (-12.2%).
- Of the WFNJ/TANF cases, 2,718 or 25.5% were child-only in June 2022.
- The counties with the most child-only cases were Camden (465), Hudson (307), and Essex (286).
- Hudson (4,586), Camden (3,957), and Essex (3,404) counties had the greatest number of persons receiving TANF in June 2022.

NJ SNAP (Formerly FOOD STAMPS)

- In June 2022, there were 423,016 households receiving NJ SNAP benefits. The number of NJ SNAP households decreased by 27,342 or -6.1%, since June 2021.
- There were 814,135 persons receiving NJ SNAP benefits as of June 2022; a decrease of 69,605 or -7.9% since June 2021.
- The counties having the highest SNAP caseload increase since June 2021 were Hunterdon (2.4%) and Camden (0.9%).
- The counties having the highest SNAP caseload decrease since June 2021 were Warren (-14.8%), Gloucester (-12.9%), and Burlington (-12.1%).

EMERGENCY ASSISTANCE

- There were 1,387 TANF families receiving Emergency Assistance (EA) in June 2022; a decrease of 6 or -0.4% since June 2021.
- In June 2022, EA payments were made for 613 SSI recipients.

DIVISION OF FAMILY DEVELOPMENT CURRENT PROGRAM STATISTICS JUNE 2022

- There were 2,032 GA cases with Emergency Assistance payments in June 2022; an increase of 130 or 6.8% since June 2021.
- The counties that showed the highest percent increase in Emergency Assistance payments were Essex (280.7%), Salem (250%), and Cumberland (100%).
- The counties that showed the highest percent decrease in Emergency Assistance payments were Sussex (-52.6%), Union (-40.4%), and Gloucester (-31.8%).

GENERAL ASSISTANCE

- The total numbers of cases receiving GA has increased from 13,247 to 16,164 since June 2021; an increase of 22%.
- There were 12,306 Employable GA and 3,858 Unemployable GA cases in June 2022.
- The counties that showed a percent increase for GA cases were Hunterdon (97.3%), Atlantic (58.7%), and Camden (51%) since June 2021.
- The counties that showed the highest percent decrease for GA cases since June 2021 were Hudson (-13.9%), Sussex (-12.8%), and Warren (-6.6%).
- In June 2022, GA cases showed a 2.02% increase since May 2022.

CHILD SUPPORT SERVICES (QUARTERLY REPORT)

- The total collection for the Child Support Services Program was about \$279 million from April 2022 to June 2022; a decrease of -13.4% over the same period from FFY .
- Total distributions decreased -13.1% from June 2021.

WORK FIRST NEW JERSEY (WFNJ)

- During the report month of June 2022, there were 441 families in which at least one member was employed and an additional 118 families whose WFNJ assistance cases were closed due to employment - related earnings.
- The three counties with the greatest number of employed active WFNJ recipients were: Hudson (77), Mercer (57), and Atlantic (52).
- There were 209 former TANF cases receiving post-TANF support in the form of child care assistance.

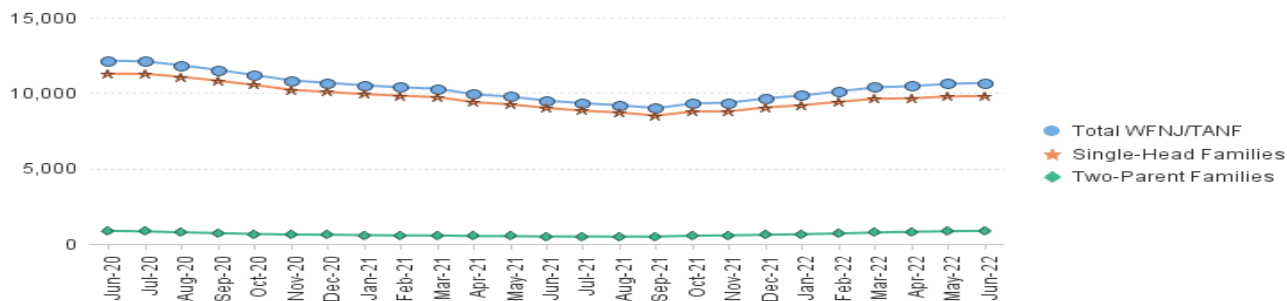
TABLE 1:

WFNJ/TANF
PROGRAM

STATEWIDE NUMBER OF APPLICATIONS AND TERMINATIONS DURING JUNE 2022

NUMBER OF ELIGIBLE FAMILIES & PERSONS RECEIVING WFNJ/TANF FOR JUNE 2022

JUNE 2020 THROUGH JUNE 2022											
		Cases Added	Cases Closed	Child-Only Cases ‡	Total Single-Head Families	2-Parent Families	Total WFNJ/TANF Families	%CHNG (1 Yr.)	Total Persons	%CHNG (1 Yr.)	Adults Children
2020	JUN	539	278	3,722	11,281	866	12,147	12.9%	31,370	17.6%	9,291 22,079
	JUL	458	526	3,686	11,274	826	12,100	14.2%	31,216	18.6%	9,240 21,976
	AUG	410	660	3,665	11,070	788	11,838	10.2%	30,454	13.9%	8,941 21,513
	SEP	475	796	3,603	10,817	711	11,528	7.3%	29,531	10.2%	8,636 20,895
	OCT	534	904	3,564	10,532	659	11,191	7.6%	28,657	9.6%	8,286 20,371
	NOV	419	767	3,470	10,218	617	10,835	-1.1%	27,738	0.3%	7,982 19,756
	DEC	434	595	3,410	10,071	607	10,678	-2.5%	27,371	-1.4%	7,875 19,496
2020	Average	682	724	3,614	10,607	698	11,306		28,973		8,390 20,583
2021	JAN	400	585	3,379	9,932	580	10,512	-1.7%	26,960	-0.6%	7,713 19,247
	FEB	378	504	3,347	9,818	559	10,377	-4.1%	26,520	-3.6%	7,589 18,931
	MAR	397	481	3,311	9,735	557	10,292	-3.9%	26,335	-3.2%	7,538 18,797
	APR	298	704	3,224	9,395	518	9,913	-11.8%	25,276	-12.1%	7,207 18,069
	MAY	264	510	3,209	9,250	513	9,763	-18.0%	24,858	-19.1%	7,067 17,791
	JUN	373	636	3,141	9,008	489	9,497	-21.8%	24,146	-23.0%	6,845 17,301
	JUL	391	590	3,068	8,829	493	9,322	-23.0%	23,785	-23.8%	6,747 17,038
	AUG	415	544	3,029	8,709	482	9,191	-22.4%	23,445	-23.0%	6,644 16,801
	SEP	388	588	2,945	8,507	489	8,996	-22.0%	23,009	-22.1%	6,540 16,469
	OCT	833	564	2,921	8,779	538	9,317	-16.7%	23,888	-16.6%	6,934 16,954
	NOV	656	614	2,816	8,791	568	9,359	-13.6%	24,282	-12.5%	7,111 17,171
	DEC	702	432	2,824	9,054	601	9,655	-9.6%	25,177	-8.0%	7,432 17,745
2021	Average	458	563	3,101	9,151	532	9,683		24,807		7,114 17,693
2022	JAN	667	484	2,796	9,193	645	9,838	-6.4%	25,789	-4.3%	7,687 18,102
	FEB	655	414	2,794	9,424	689	10,113	-2.5%	26,638	0.4%	8,008 18,630
	MAR	715	512	2,804	9,623	756	10,379	0.8%	27,433	4.2%	8,331 19,102
	APR	644	622	2,743	9,656	802	10,458	5.5%	27,749	9.8%	8,517 19,232
	MAY	632	475	2,723	9,777	838	10,615	8.7%	28,183	13.4%	8,730 19,453
	JUN	622	599	2,718	9,802	869	10,671	12.4%	28,287	17.1%	8,822 19,465
2022	Average to date	656	518	2,763	9,579	767	10,346		27,347		8,349 18,997

NJ STATEWIDE
Eligible Families Receiving WFNJ/TANF
JUNE 2020 THROUGH JUNE 2022

Data is derived from NJ MMS Shared Data Warehouse Issuance files.

Effective July 2013 this data query source was converted to the SDV

‡ Child-only cases are defined as families in which no eligible adult receives TANF program benefits, yet the family continues to be headed by at least one of the biological parents, or grandparents, or other appropriate adult.

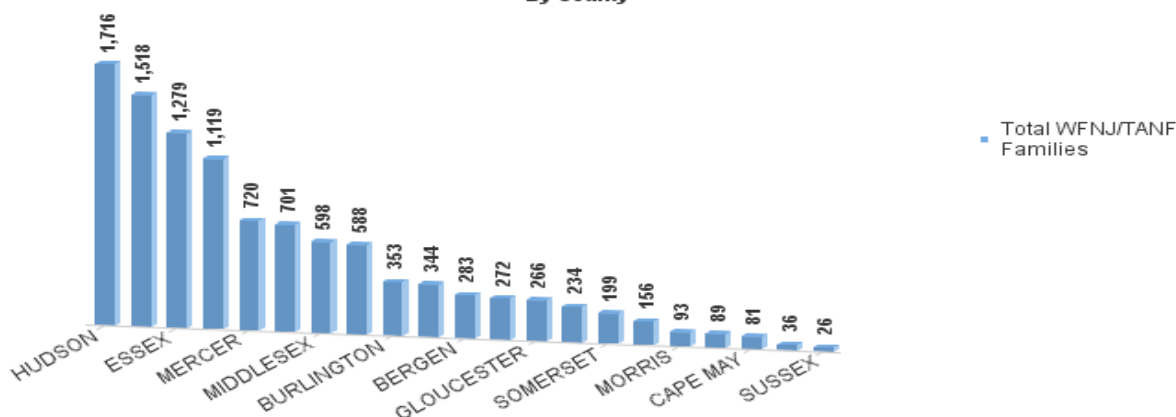
TABLE 2:

WFNJ/TANF
PROGRAM

NUMBER OF APPLICATIONS AND TERMINATIONS BY COUNTY DURING JUNE 2022

NUMBER OF ELIGIBLE FAMILIES RECEIVING WFNJ/TANF FOR JUNE 2022

County	Cases Added	Cases Closed **	Child- Only Cases ‡	1-Adult Cases	Total Single-Head Families	2-Parent Families	Total WFNJ/TANF Families	%CHNG (3 Mon)	%CHNG (1 Yr.)
ATLANTIC	30	22	239	419	658	43	701	2.5%	9.9%
BERGEN	23	25	52	200	252	31	283	2.2%	18.9%
BURLINGTON	17	30	103	234	337	16	353	-0.6%	13.5%
CAMDEN	56	72	465	956	1,421	97	1,518	0.8%	19.2%
CAPE MAY	4	10	25	52	77	4	81	-5.8%	0.0%
CUMBERLAND	20	30	107	145	252	20	272	-6.5%	-0.7%
ESSEX	81	56	286	905	1,191	88	1,279	4.2%	-15.3%
GLOUCESTER	22	16	70	184	254	12	266	3.1%	12.2%
HUDSON	124	104	307	1,217	1,524	192	1,716	4.9%	26.5%
HUNTERDON	1	23	5	27	32	4	36	-41.0%	-12.2%
MERCER	42	32	208	487	695	25	720	7.0%	22.9%
MIDDLESEX	38	32	187	379	566	32	598	0.2%	16.3%
MONMOUTH	13	11	58	166	224	10	234	3.5%	37.6%
MORRIS	7	6	23	56	79	14	93	4.5%	16.3%
OCEAN	21	18	70	253	323	21	344	1.2%	17.0%
PASSAIC	29	40	281	762	1,043	76	1,119	-1.1%	9.9%
SALEM	15	13	34	100	134	22	156	6.1%	43.1%
SOMERSET	11	13	42	138	180	19	199	-4.3%	15.7%
SUSSEX	5	1	8	13	21	5	26	4.0%	23.8%
UNION	56	32	128	327	455	133	588	8.7%	30.7%
WARREN	7	13	20	64	84	5	89	-11.0%	-27.0%
NJ Total	622	599	2,718	7,084	9,802	869	10,671	2.0%	12.4%

Total WFNJ/TANF Families
JUNE 2022
By County

Data is derived from NJ MMIS Shared Data Warehouse Issuance files.

Effective July 2013 this data query source was converted to the SDW

‡ Child-only cases are defined as families in which no eligible adult receives TANF program benefits, yet the family continues to be headed by at least one of the biological parents, or grandparents, or other appropriate adult

** 'Cases closed' include cases that received a benefit in the prior month, but did not receive any TANF benefit for the report month.

Δ=higher caseload % change

*=lower caseload % change

TABLE 2B :

WFNJ/TANF

NUMBER OF PARTICIPATING PERSONS, ADULTS, AND CHILDREN

PROGRAM

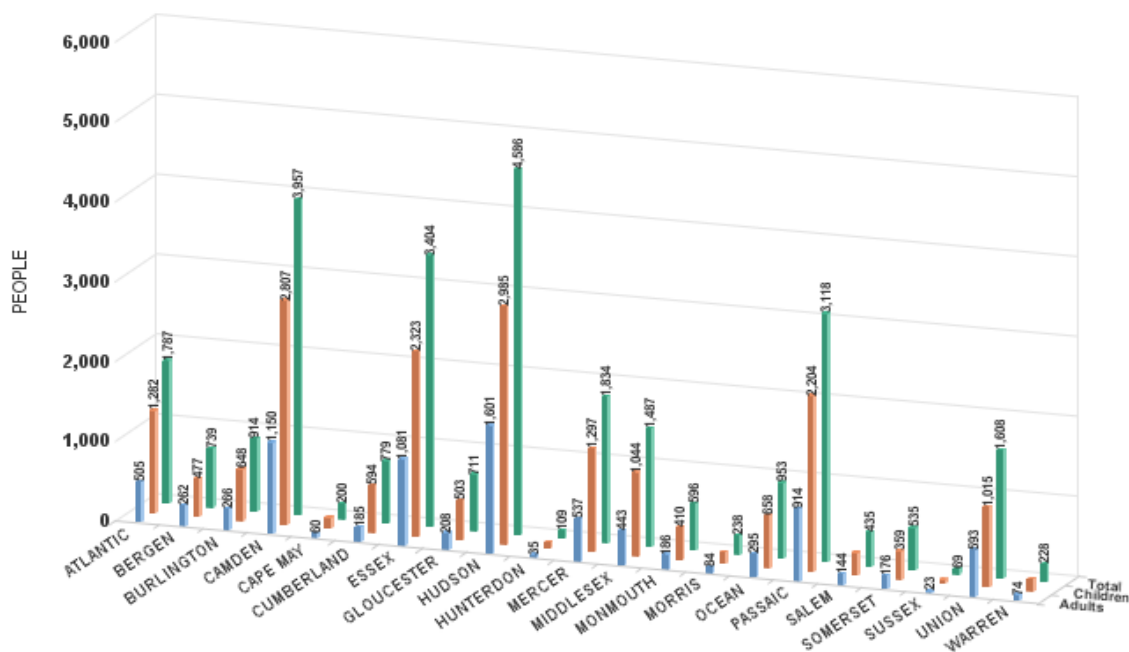
BY COUNTY FOR JUNE 2022

PERSONS

County	Adults	Children	Child/Adult Ratio	Total Persons	% Chng (1 Yr)	Persons Per Case
ATLANTIC	505	1,282	2.54	1,787	13.2%	2.55
BERGEN	262	477	1.82	739	24.6%	2.61
BURLINGTON	266	648	2.44	914	19.8%	2.59
CAMDEN	1,150	2,807	2.44	3,957	26.0%	2.61
CAPE MAY	60	140	2.33	200	-1.0%	2.47
CUMBERLAND	185	594	3.21	779	2.2%	2.86
ESSEX	1,081	2,323	2.15	3,404	-12.0%	*
GLOUCESTER	208	503	2.42	711	23.2%	2.67
HUDSON	1,601	2,985	1.86	4,586	33.9%	2.67
HUNTERDON	35	74	2.11	109	-3.5%	*
MERCER	537	1,297	2.42	1,834	24.5%	2.55
MIDDLESEX	443	1,044	2.36	1,487	15.0%	2.49
MONMOUTH	186	410	2.20	596	57.3%	Δ
MORRIS	84	154	1.83	238	20.2%	2.56
OCEAN	295	658	2.23	953	22.8%	2.77
PASSAIC	914	2,204	2.41	3,118	15.0%	2.79
SALEM	144	291	2.02	435	55.4%	Δ
SOMERSET	176	359	2.04	535	19.7%	2.69
SUSSEX	23	46	2.00	69	16.9%	2.65
UNION	593	1,015	1.71	1,608	35.7%	Δ
WARREN	74	154	2.08	228	-29.2%	*
NJ Total	8,822	19,465	2.21	28,287	17.1%	2.65

Δ=higher caseload % change

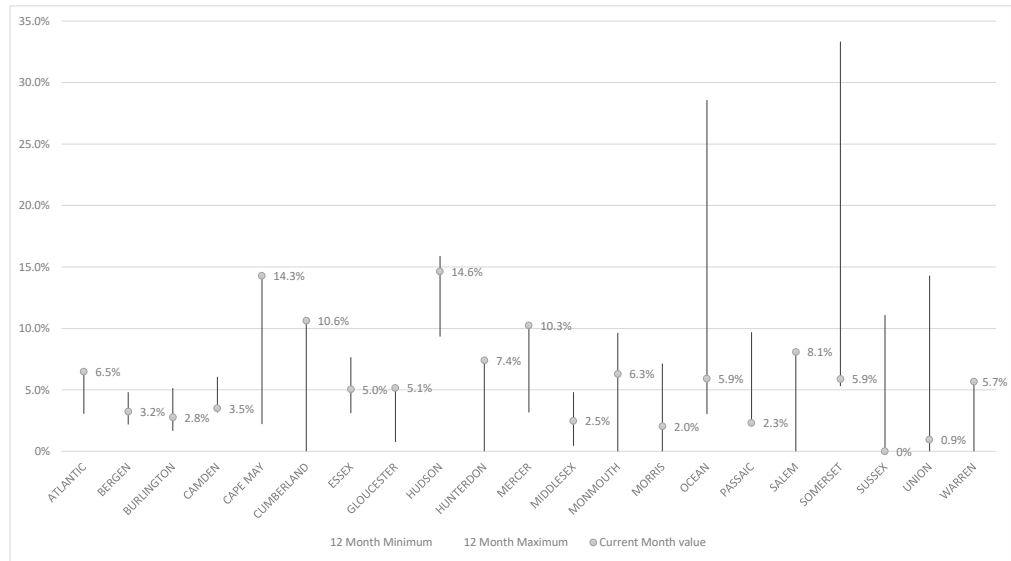
*=lower caseload % change



Data is derived from NJ MMIS Shared Data Warehouse Issuance files.

Effective July 2013 this data query source was converted to the SDW

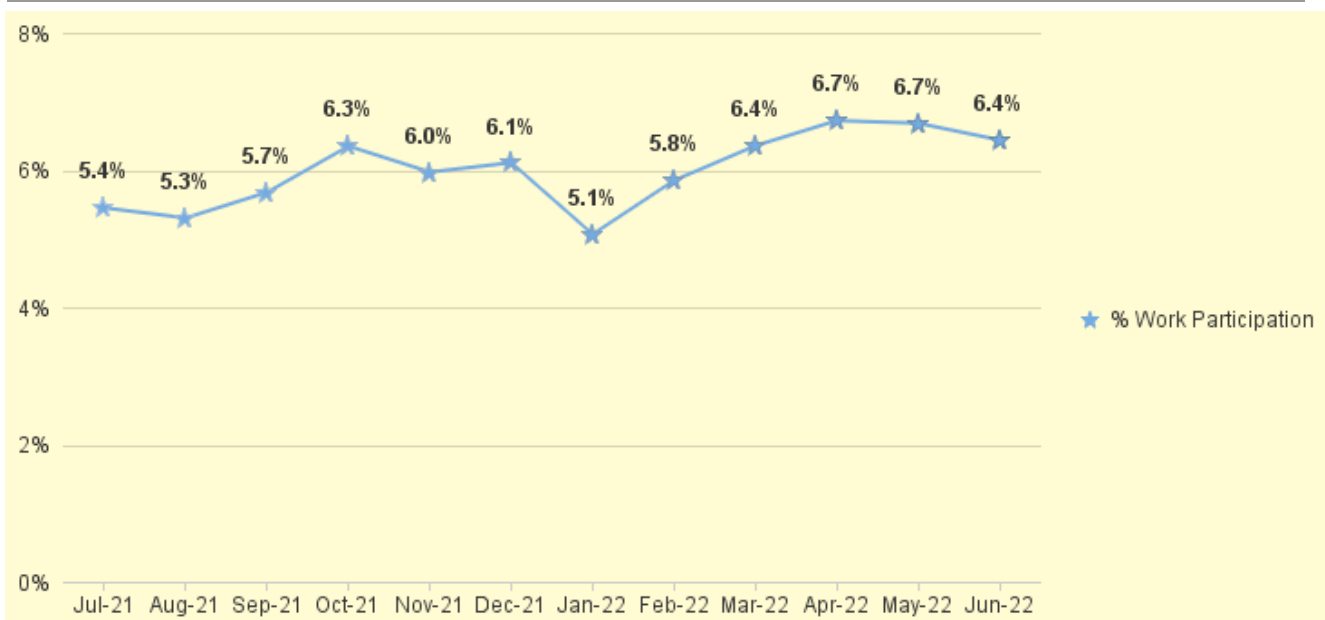
TABLE 3 :
Work Participation Rates Achieved Over 12 Month Period
Ending with JUNE 2022



Data is derived from NJ MMIS Shared Data Warehouse Issuance files.
Effective July 2013 this data query source was converted to the SDW

TABLE 4 :

**WFNJ/TANF Work Participation Rates
for 12-Month Period Ending with JUNE 2022 Statewide**



* The Work Participation rate measures the number of countable Temporary Assistance for Needs Families (TANF) participants based on federal formula.

The reported rate is considered to be preliminary until officially calculated by the federal government soon after the close of each federal fiscal year.

TABLE 5 :
NJ SNAP
(FOOD STAMPS)
NUMBER OF PARTICIPATING HOUSEHOLDS, PERSONS, ADULTS
AND CHILDREN FOR JUNE 2022 (STATEWIDE)

		JUNE 2020 THROUGH JUNE 2022									
		HOUSEHOLDS				PERSONS				Age 60+	People with a disability
		WFNJ/ TANF	Other low income	Total	% CHNG (1 YR)	Adults	Children	TOTAL	% CHNG (1 YR)		
2020	JUN	11,522	358,302	369,824	6.7%	398,959	326,357	725,316	5.9%	120,137	209,224
	JUL	11,336	364,797	376,133	9.4%	405,652	329,166	734,818	8.1%	120,881	211,115
	AUG	11,044	373,293	384,337	10.8%	414,644	333,705	748,349	9.0%	118,173	204,375
	SEP	10,928	384,063	394,991	15.7%	426,710	342,621	769,331	14.1%	122,341	214,255
	OCT	10,605	393,716	404,321	17.8%	437,538	350,440	787,978	16.2%	123,068	216,012
	NOV	10,335	395,876	406,211	18.7%	440,136	350,631	790,767	17.1%	123,104	216,208
	DEC	10,308	401,212	411,520	20.8%	446,083	354,408	800,491	19.3%	123,498	221,131
2020	Average	10,790	361,610	372,400		401,036	326,988	728,024		120,180	209,182
2021	JAN	10,214	409,050	419,264	24.8%	454,910	360,490	815,400	23.6%	123,751	221,129
	FEB	9,980	413,080	423,060	25.6%	459,801	362,760	822,561	24.4%	123,888	221,585
	MAR	9,632	418,259	427,891	27.7%	465,302	366,223	831,525	26.5%	124,614	222,961
	APR	9,474	423,186	432,660	24.3%	470,412	369,625	840,037	23.0%	125,182	224,256
	MAY	9,371	428,961	438,332	19.9%	476,827	373,151	849,978	18.4%	125,750	225,339
	JUN	9,833	440,525	450,358	21.8%	490,430	393,310	883,740	21.8%	126,085	227,479
	JUL	9,067	437,889	446,956	18.8%	485,975	379,528	865,503	17.8%	126,552	227,352
	AUG	9,070	442,333	451,403	17.4%	490,577	383,106	873,683	16.7%	127,091	228,513
	SEP	9,561	447,902	457,463	15.8%	497,122	390,345	887,467	15.4%	127,550	229,863
	OCT	9,822	452,139	461,961	14.3%	502,415	388,925	891,340	13.1%	128,700	231,751
	NOV	9,967	455,343	465,310	14.5%	506,476	391,904	898,380	13.6%	129,292	233,050
	DEC	10,138	458,239	468,377	13.8%	510,116	392,757	902,873	12.8%	129,744	238,680
2021	Average	9,677	435,576	445,253		484,197	379,344	863,541		126,517	227,663
2022	JAN	10,418	457,935	468,353	11.7%	509,801	392,651	902,452	10.7%	157,425	236,238
	FEB	10,486	451,733	462,219	9.3%	503,693	385,199	888,892	8.1%	156,540	232,864
	MAR	10,588	455,766	466,354	9.0%	508,290	388,977	897,267	7.9%	158,331	234,617
	APR	10,706	439,659	450,365	4.1%	491,276	375,105	866,381	3.1%	156,504	231,071
	MAY	10,669	423,672	434,341	-0.9%	474,542	360,324	834,866	-1.8%	154,816	227,400
2022	Average to date	10,586	440,189	450,775		491,727	375,606	867,332		156,723	232,438

This Table is based on those Households & Persons that received SNAP issuances (benefits) during the month

Data is derived from NJ MMIS Shared Data Warehouse.

Effective July 2013 this data query source was converted to the SDW.

* Age 60+ and People with a disability columns are independent subsets of total persons. An individual might appear in both columns

TABLE 6:

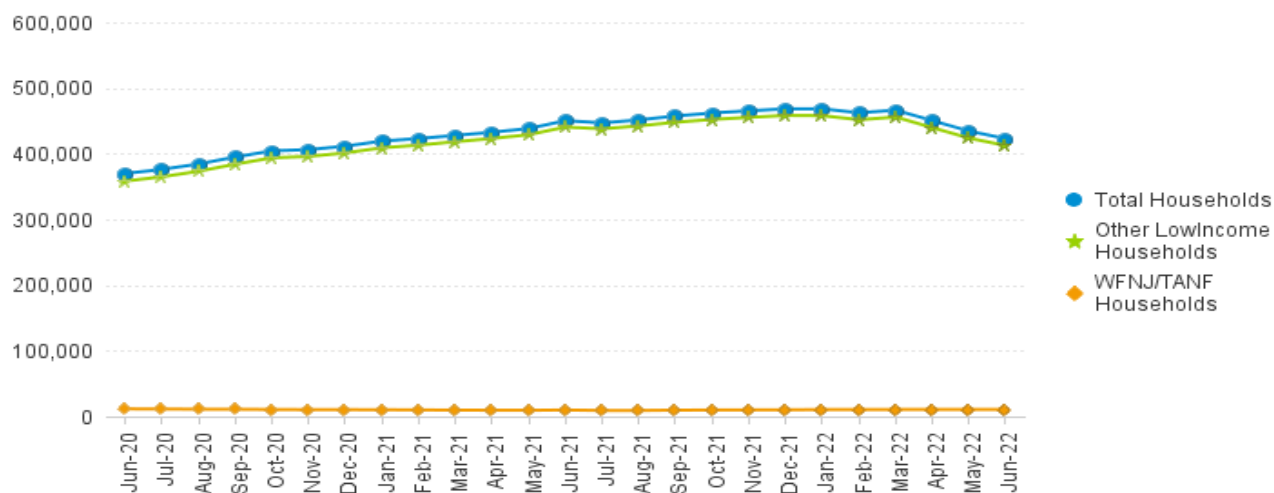
NJ SNAP

TRENDS FOR PARTICIPATING HOUSEHOLDS & PERSONS

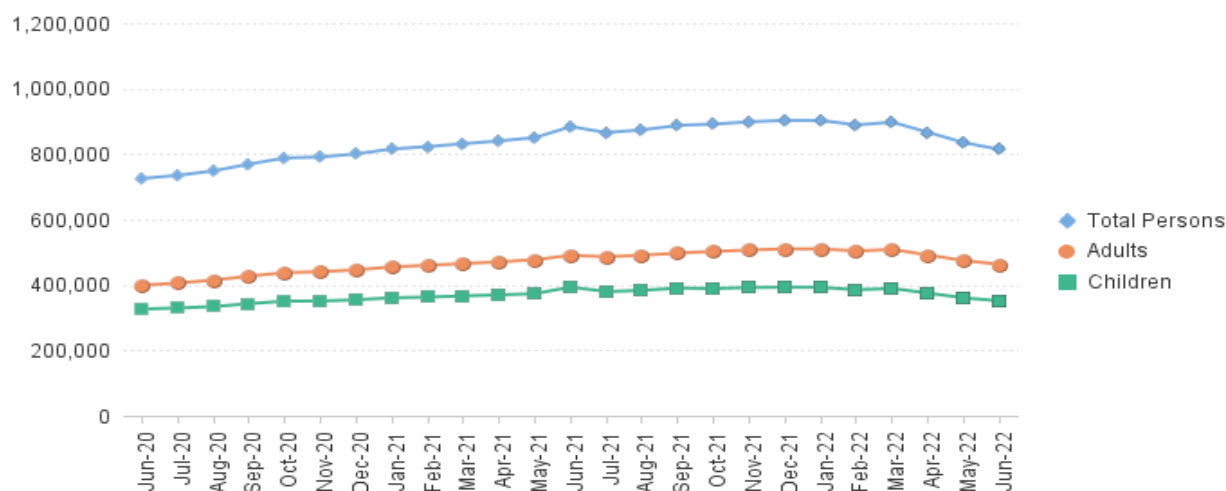
(FOOD STAMPS)

JUNE 2020 THROUGH JUNE 2022 (STATEWIDE)

Statewide NJ SNAP Households: JUNE 2020 Through JUNE 2022



Statewide NJ SNAP Persons: JUNE 2020 Through JUNE 2022



Effective July 2013 this data query source was converted to the SDW

TABLE 7 :
NJ SNAPNUMBER OF PARTICIPATING HOUSEHOLDS, PERSONS, ADULTS
AND CHILDREN BY COUNTY FOR JUNE 2022

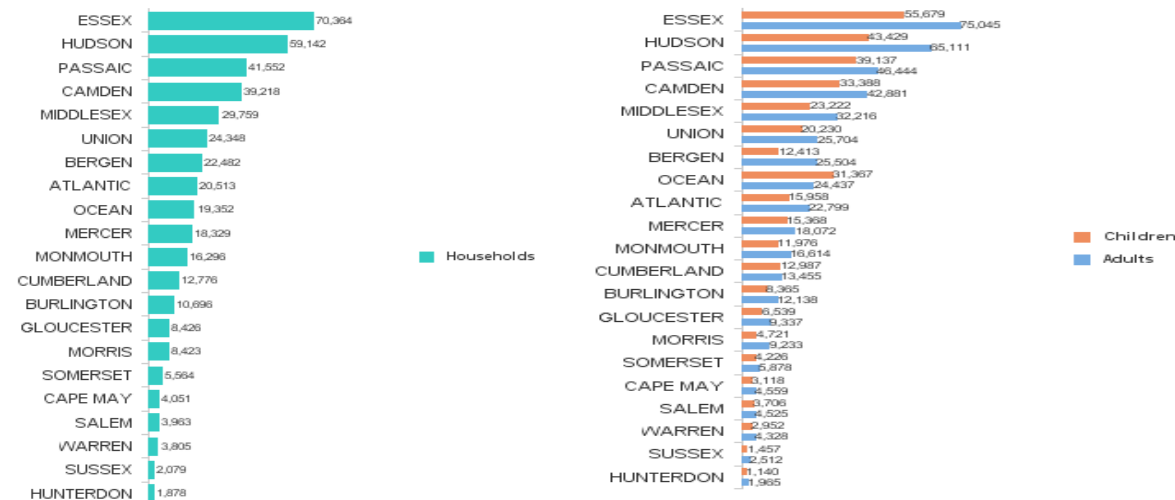
County	HOUSEHOLDS				PERSONS				Age 60+	People with a disability
	WFNJ/ TANF	Other low income	TOTAL	% Chng (1 Yr)	Adults	Children	TOTAL	% Chng (1 Yr)		
ATLANTIC	640	19,873	20,513	-6.1%	22,799	15,958	38,757	-7.7%	6,780	10,933
BERGEN	301	22,181	22,482	-2.6%	25,504	12,413	37,917	-3.2%	13,936	15,950
BURLINGTON	393	10,303	10,696	-12.1%	12,138	8,365	20,503	-16.0%	3,632	6,507
CAMDEN	1,436	37,782	39,218	0.9% Δ	42,881	33,388	76,269	-1.1%	10,813	20,029
CAPE MAY	85	3,966	4,051	-7.8%	4,559	3,118	7,677	-9.5%	1,309	2,283
CUMBERLAND	261	12,515	12,776	-7.7%	13,455	12,987	26,442	-8.9%	3,541	7,104
ESSEX	1,552	68,812	70,364	-2.1%	75,045	55,679	130,724	-5.4%	19,879	31,054
GLOUCESTER	240	8,186	8,426	-12.9% *	9,337	6,539	15,876	-16.6% *	2,958	5,957
HUDSON	1,600	57,542	59,142	-8.9%	65,111	43,429	108,540	-10.3%	22,930	29,019
HUNTERDON	38	1,840	1,878	2.4% Δ	1,965	1,140	3,105	-0.7% Δ	725	1,086
MERCER	757	17,572	18,329	-5.7%	18,072	15,368	33,440	-7.6%	5,541	10,445
MIDDLESEX	633	29,126	29,759	-2.0% Δ	32,216	23,222	55,438	-4.8%	14,064	17,902
MONMOUTH	233	16,063	16,296	-10.7%	16,614	11,976	28,590	-12.8%	6,679	9,759
MORRIS	103	8,320	8,423	-2.5%	9,233	4,721	13,954	-5.8%	4,787	5,450
OCEAN	338	19,014	19,352	-2.2%	24,437	31,367	55,804	-1.0% Δ	6,600	10,475
PASSAIC	1,074	40,478	41,552	-12.1%	46,444	39,137	85,581	-12.8%	15,196	19,534
SALEM	164	3,799	3,963	-9.2%	4,525	3,706	8,231	-10.1%	1,147	2,262
SOMERSET	184	5,380	5,564	-9.1%	5,878	4,226	10,104	-11.4%	2,460	3,426
SUSSEX	35	2,044	2,079	-11.5%	2,512	1,457	3,969	-10.7%	887	1,493
UNION	495	23,853	24,348	-9.3%	25,704	20,230	45,934	-11.4%	8,945	12,408
WARREN	88	3,717	3,805	-14.8% *	4,328	2,952	7,280	-17.4% *	1,298	2,376
NJ TOTAL	10,650	412,366	423,016	-6.1%	462,757	351,378	814,135	-7.9%	154,107	225,452

Δ=higher caseload % change

* =lower caseload % change

Total NJ SNAP Recipients

JUNE 2022 by County



Data is derived from NJ MMS Shared Data Warehouse.

Effective July 2013 this data query source was converted to the SDW.

* Age 60+ and People with a disability columns are independent subsets of total persons. An individual might appear in both columns

TABLE 8 :

EMERGENCY ASSISTANCE (STATEWIDE)

TOTAL NUMBER OF ELIGIBLE FAMILIES RECEIVING EMERGENCY ASSISTANCE PAYMENTS

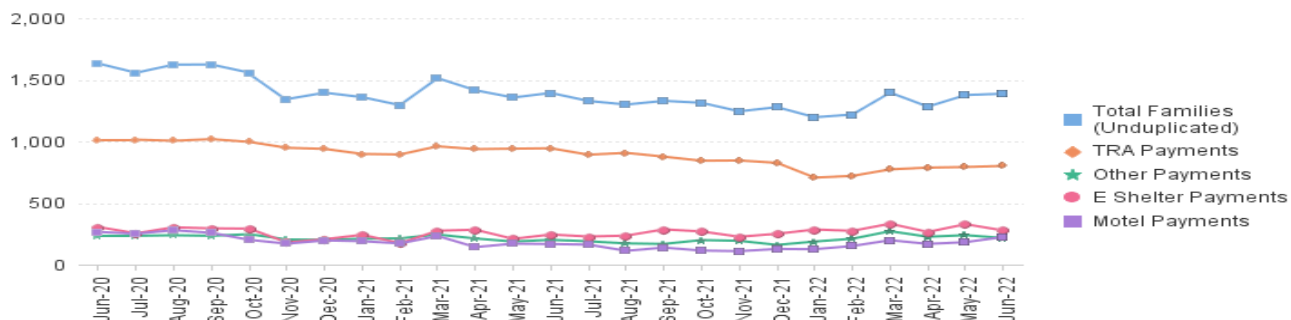
JUNE 2020 THROUGH JUNE 2022 - STATEWIDE

		Total WFNJ/EA Families		% CHNG (1 YR)	Temp Rent Asst. Payments (Undupl)	% CHNG (1 YR)	Motel Housing Payments (Undupl)	% CHNG (1 YR)	Shelter/Transitional Housing Payments (Undupl)		% CHNG (1 YR)	Other WFNJ/EA Payments (Undupl)	% CHNG (1 YR)
		(Undupl)											
2020	JUN	1,632		5.9%					#####				
	JUL	1,557		3.0%	1,014	23.8%	265	61.6%	#####		-28.6%	234	-43.3%
	AUG	1,623		-3.0%	1,014	33.2%	251	88.7%	#####		-43.3%	234	-42.2%
	SEP	1,624		-1.0%	1,005	18.0%	279	75.5%	#####		-40.9%	238	-46.3%
	OCT	1,558		-14.5%	1,018	22.1%	258	41.0%	#####		-32.1%	234	-47.9%
	NOV	1,343		-13.6%	996	16.1%	201	-17.6%	#####		-42.5%	247	-54.8%
	DEC	1,395		-14.5%	948	8.8%	170	19.7%	#####		-52.9%	204	-50.6%
2020 Average		1,560			939	9.8%	196	2.1%	#####		-53.2%	201	-51.8%
2021	JAN	1,359		-23.1%	897		220		#####			274	
	FEB	1,294		-19.1%	898	-5.4%	190	-24.3%	#####		-42.7%	210	-59.1%
	MAR	1,513		-12.2%	894	-4.1%	172	-5.0%	#####		-52.3%	213	-47.9%
	APR	1,415		-2.7%	960	-2.0%	232	19.0%	#####		-32.3%	244	-47.2%
	MAY	1,356		-6.1%	937	-2.4%	142	-7.2%	#####		-15.3%	212	47.2%
	JUN	1,393		-14.6%	941	5.7%	170	-28.6%	#####		-22.6%	187	14.7%
	JUL	1,328		-14.7%	944	-6.9%	167	-37.0%	#####		-20.0%	201	-14.1%
	AUG	1,299		-20.0%	892	-12.0%	162	-35.5%	#####		-10.2%	189	-19.2%
	SEP	1,329		-18.2%	907	-9.8%	112	-59.9%	#####		-22.4%	172	-27.7%
	OCT	1,313		-15.7%	876	-13.9%	138	-46.5%	#####		-2.7%	168	-28.2%
	NOV	1,244		-7.4%	843	-15.4%	114	-43.3%	#####		-7.9%	199	-19.4%
	DEC	1,278		-8.4%	845	-10.9%	109	-35.9%	#####		25.6%	193	-5.4%
2021 Average		1,343			826	-12.0%	127	-35.2%	#####		21.4%	160	-20.4%
2022	JAN	1,196		-12.0%	706	-21.4%	125	-34.2%	#####		17.8%	187	-11.0%
	FEB	1,218		-5.9%	720	-19.5%	151	-12.2%	#####		57.5%	210	-1.4%
	MAR	1,396		-7.7%	773	-19.5%	198	-14.7%	#####		20.7%	271	11.1%
	APR	1,282		-9.4%	787	-16.0%	168	18.3%	#####		-6.4%	226	6.6%
	MAY	1,376		1.5%	792	-15.8%	182	7.1%	#####		56.9%	239	27.8%
	JUN	1,387		-0.4%	801	-15.1%	224	34.1%	#####		13.5%	216	7.5%
2022 Average to date		1,309			763		175		#####			225	

NJ STATEWIDE

Families Receiving Emergency Assistance

JUNE 2020 THROUGH JUNE 2022



WFNJ/EA data is derived from NJ MMIS Shared Data Warehouse.

Effective July 2013 this data query source was converted to the SDW.

* Effective Feb '11 Transitional Housing Payments were removed from 'Other EA Payments' and added to 'Shelter Payments'.

TABLE 9 :
EMERGENCY ASSISTANCE (BY COUNTY)
TOTAL NUMBER OF ELIGIBLE FAMILIES RECEIVING EMERGENCY ASSISTANCE PAYMENTS
BY COUNTY (UNDULICATED CASES) FOR JUNE 2022

County	TOTAL WFNJ/EA Families (Undupl)	% CHNG From JUN 21		Temp Rent Asst. Payments (Undupl)	Motel Housing Payments (Undupl)	Shelter/Transitional Housing Payments (Undupl)	Other WFNJ/EA Payments (Undupl)	SSI Recipients Receiving EA **
ATLANTIC	44	-27.9%	*	33	0	0	13	35
BERGEN	44	7.3%		30	0	11	6	44
BURLINGTON	96	81.1%	Δ	4	45	52	1	60
CAMDEN	34	-8.1%		16	3	16	3	19
CAPE MAY	15	-34.8%	*	6	9	0	0	13
CUMBERLAND	0	0%		0	0	0	0	0
ESSEX	141	-4.7%		38	0	96	8	12
GLOUCESTER	12	9.1%		1	1	2	8	9
HUDSON	219	3.8%		183	9	19	49	65
HUNTERDON	9	28.6%	Δ	5	0	0	6	7
MERCER	133	84.7%	Δ	75	36	9	29	104
MIDDLESEX	115	-21.2%		74	26	4	26	40
MONMOUTH	28	7.7%		0	6	23	3	55
MORRIS	10	-16.7%		6	4	0	0	8
OCEAN	80	-25.9%	*	49	28	0	15	28
PASSAIC	218	-10.7%		180	11	18	22	19
SALEM	5	0%		1	0	3	1	0
SOMERSET	59	-18.1%		44	3	6	9	50
SUSSEX	2	0%		0	1	1	0	2
UNION	111	4.7%		51	38	14	15	40
WARREN	12	-20.0%		5	4	3	2	3
NJ Total	1,387	-0.4%		801	224	277	216	613

Δ=higher caseload % change

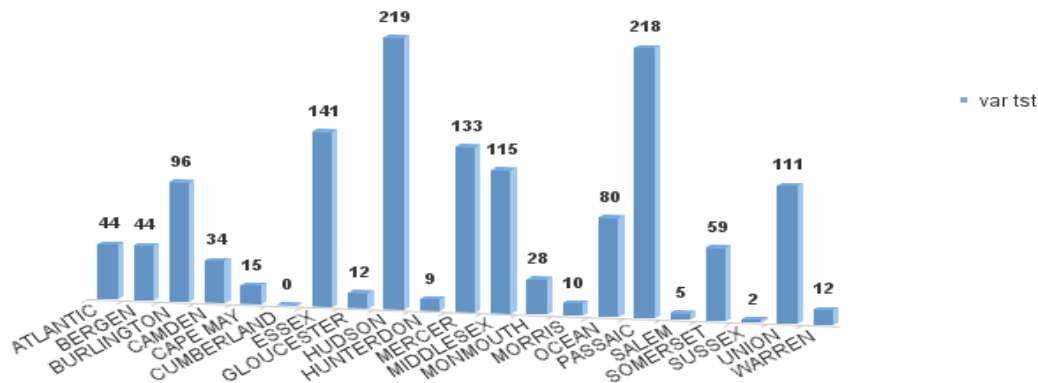
*=lower caseload % change

** SSI-EA includes pay codes 22 and 24, data is derived from NJ Division of Family Development FAMIS Report #FM430-03A

WFNJ/EA data is derived from NJ MMIS Shared Data Warehouse.

Effective July 2013 this data query source was converted to the SDW.

Number WFNJ Families Receiving EA by County
JUNE 2022



**TABLE 10:
GENERAL
ASSISTANCE
PROGRAM**

**NUMBER OF EMPLOYABLE AND UNEMPLOYABLE RECIPIENTS
AND EMERGENCY ASSISTANCE PAYMENTS - STATEWIDE
JUNE 2020 THROUGH JUNE 2022**

	Total Cases						Emergency Assistance Cases			
	Employable	% Chng (1 Yr)	Unemployable	% Chng (1 Yr)	Total	% Chng (1 Yr)	Tempor Rental Assista nce	C C	Total	% Chng (1 Yr)
2020 JUN	7,585	87.4%	5,645	-8.2%	13,230	29.8%	916	1,255	2,171	4.1%
JUL	7,994	97.4%	5,520	-9.2%	13,514	33.4%	905	1,256	2,161	8.4%
AUG	8,119	86.7%	5,261	-16.0%	13,380	26.1%	875	1,188	2,063	-1.5%
SEP	8,176	93.4%	5,127	-17.2%	13,303	27.7%	849	1,333	2,182	1.1%
OCT	8,156	104.9%	4,988	-17.1%	13,144	31.5%	855	1,107	1,962	-11.2%
NOV	8,228	111.0%	4,822	-19.5%	13,050	32.0%	835	884	1,719	-17.2%
DEC	8,540	118.0%	4,691	-21.9%	13,231	33.3%	833	1,111	1,944	-4.7%
2020 AVERAGE	6,875		5,461		12,337		885	1,110	1,995	
2021 JAN	8,978	118.5%	4,553	-23.1%	13,531	34.9%	848	1,240	2,088	-1.8%
FEB	9,089	116.1%	4,407	-25.7%	13,496	33.2%	809	991	1,800	-10.3%
MAR	9,630	97.8%	4,421	-26.2%	14,051	29.4%	819	1,405	2,224	11.4%
APR	9,499	70.0%	4,288	-26.9%	13,787	20.4%	832	1,204	2,036	15.2%
MAY	9,630	38.8%	4,421	-23.6%	14,051	10.5%	819	491	1,310	-28.7%
JUN	9,007	18.7%	4,130	-32.8%	13,247	0.1%	794	1,108	1,902	-12.4%
JUL	9,090	13.7%	4,078	-26.1%	13,168	-2.6%	833	1,121	1,954	-9.6%
AUG	9,120	12.3%	3,982	-24.3%	13,102	-2.1%	753	1,091	1,844	-10.6%
SEP	9,045	10.6%	3,914	-23.7%	12,959	-2.6%	787	1,114	1,901	-12.9%
OCT	9,309	14.1%	3,875	-22.3%	13,184	0.3%	757	1,061	1,818	-7.3%
NOV	9,668	17.5%	3,853	-20.1%	13,521	3.6%	711	1,011	1,722	0.2%
DEC	10,040	17.6%	3,855	-17.8%	13,895	5.0%	742	1,071	1,813	-6.7%
2021 AVERAGE	9,342		4,148		13,499		792	1,076	1,868	
2022 JAN	10,239	14.0%	3,801	-16.5%	14,040	3.8%	677	947	1,624	-22.2%
FEB	10,687	17.6%	3,812	-13.5%	14,499	7.4%	727	1,126	1,853	2.9%
MAR	11,462	19.0%	3,870	-12.5%	15,332	9.1%	719	1,399	2,118	-4.8%
APR	11,810	24.3%	3,823	-10.8%	15,633	13.4%	742	1,196	1,938	-4.8%
MAY	12,039	25.0%	3,805	-13.9%	15,844	12.8%	750	1,152	1,902	45.2%
JUN	12,306	36.6%	3,858	-6.6%	16,164	22.0%	782	1,250	2,032	6.8%
2022 AVERAGE TO DATE	11,424		3,828		15,252		733	1,178	1,911	

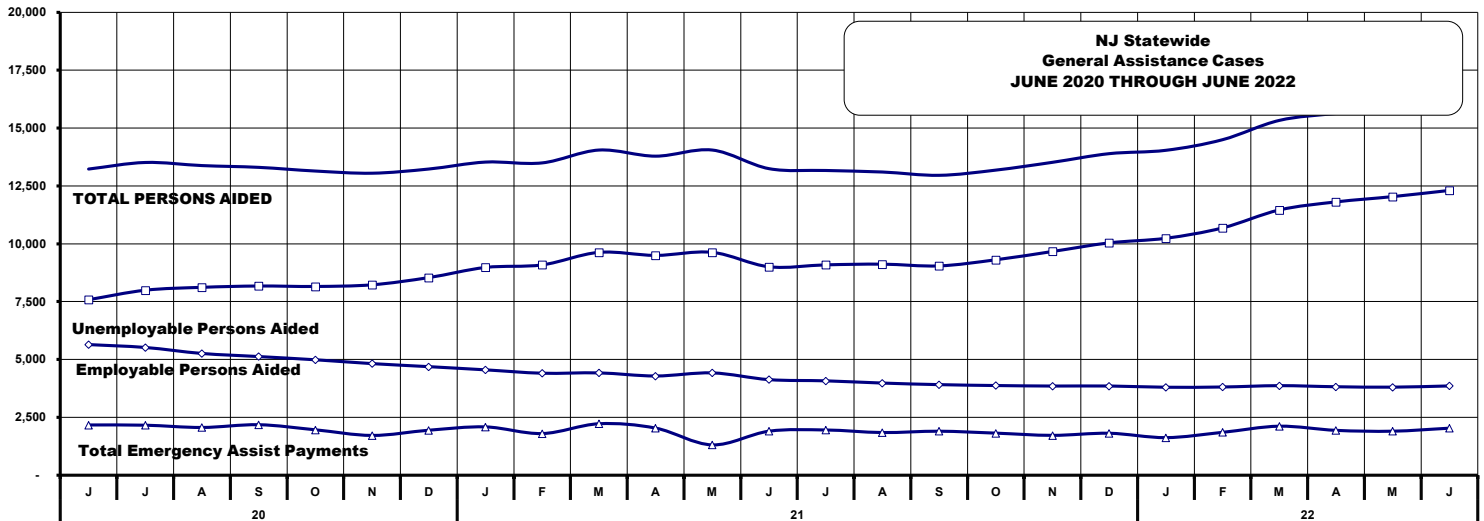


TABLE 11:
GENERAL
ASSISTANCE
PROGRAM

EMPLOYABLE AND UNEMPLOYABLE CASES
AND EMERGENCY ASSISTANCE CASES RECEIVING PAYMENTS BY COUNTY
JUNE 2022

	Total Cases						Emergency Assistance Cases			
	Employable	% Chng (1 Yr)	Unemployable	% Chng (1 Yr)	Total	% Chng (1 Yr)	Temporary Rental Assistance	Other GA-EA	Total	% Chng (1 Yr)
ATLANTIC	1,401	76.2%	188	-8.7%	1,589	58.7%	97	29	126	31.3%
BERGEN	412	33.3%	178	-8.2%	590	17.3%	80	39	119	-1.7%
BURLINGTON	532	36.1%	174	-14.3%	706	18.9%	11	108	119	3.5%
CAMDEN	2,062	69.2%	508	5.2%	2,570	51.0%	38	82	120	-16.7%
CAPE MAY	127	46.0%	47	4.4%	174	31.8%	18	42	60	13.2%
CUMBERLAND	318	3.2%	114	25.3%	432	8.3%	0	6	6	100.0%
ESSEX	1,323	36.5%	278	-16.8%	1,601	22.9%	22	195	217	280.7%
GLOUCESTER	175	22.4%	111	-19.6%	286	1.8%	2	13	15	-31.8%
HUDSON	1,707	-12.7%	440	-18.5%	2,147	-13.9%	113	102	215	-5.7%
HUNTERDON	166	155.4%	55	17.0%	221	97.3%	9	32	41	64.0%
MERCER	587	51.7%	245	-14.3%	832	23.6%	56	50	106	43.2%
MIDDLESEX	537	18.0%	360	18.0%	897	18.0%	77	153	230	21.7%
MONMOUTH	325	47.1%	174	4.2%	499	28.6%	0	88	88	11.4%
MORRIS	249	76.6%	170	13.3%	419	44.0%	51	43	94	17.5%
OCEAN	443	42.9%	211	-7.9%	654	21.3%	47	78	125	-14.4%
PASSAIC	630	50.4%	266	-19.1%	896	19.8%	46	16	62	-23.5%
SALEM	173	35.2%	37	-30.2%	210	16.0%	0	7	7	250.0%
SOMERSET	214	69.8%	50	-12.3%	264	44.3%	40	41	81	20.9%
SUSSEX	49	-9.3%	19	-20.8%	68	-12.8%	0	9	9	-52.6%
UNION	739	44.1%	173	8.1%	912	35.5%	60	86	146	-40.4%
WARREN	137	1041.7%	60	-32.6%	197	-6.6%	15	31	46	-17.9%
NJ TOTAL	12,306	36.6%	3,858	-6.6%	16,164	22.0%	782	1,250	2,032	6.8%

Δ= ↑ Caseload %

* = ↓ Caseload %

**TABLE 12:
OFFICE OF
CHILD SUPPORT
SERVICES**

**OFFICE OF CHILD SUPPORT SERVICES
QUARTERLY PERFORMANCE REPORT
STATE SUMMARY
TITLE IV-D SOURCE COLLECTION REPORT
Comparison of Quarter-3 (FFY 2021 vs. FFY 2022)**

COLLECTION SOURCE	TOTAL 4/1/2021 - 6/30/2021	% OF TOTAL COLLECTIONS	TOTAL 4/1/2022 - 6/30/2022	% OF TOTAL COLLECTIONS	DOLLAR CHANGE	% CHANGE
FEDERAL TAX	\$26,914,603	8.34%	\$17,731,625	6.35%	\$ (9,182,978)	-34.12%
STATE TAX	\$3,024,509	0.94%	\$2,668,025	0.96%	\$ (356,484)	-11.79%
UIB	\$31,217,516	9.68%	\$5,421,741	1.94%	\$ (25,795,775)	-82.63%
INC WITHHOLD	\$188,440,986	58.42%	\$185,627,039	66.46%	\$ (2,813,947)	-1.49%
FROM OTHER STATES	\$12,916,085	4.00%	\$10,523,803	3.77%	\$ (2,392,282)	-18.52%
ADMIN ENFORCEMENT	\$6,297,192	1.95%	\$4,052,911	1.45%	\$ (2,244,281)	-35.64%
OTHER	\$53,729,487	16.66%	\$53,297,540	19.08%	\$ (431,947)	-0.80%
TOTAL COLLECTIONS*	\$322,540,378	100.00%	\$279,322,684	100.00%	\$ (43,217,694)	-13.40%
DISBURSED COLLECTIONS**	\$278,577,027		\$242,148,920		\$ (36,428,107)	-13.08%

* Includes collections on both current support and arrears.

** Includes collections on both current support and arrears; also includes money sent to other states.

SOURCE: NJKiDS (Based on Federal Quarterly Report of Collections - OCSE-34A except Disbursed Collections)

Disbursed Collections obtained from Federal Data Report - OCSE-157, which is reported annually to Congress and used in the calculation of incentive dollars earned by each state.

TABLE 14:
OFFICE OF
CHILD SUPPORT
SERVICES

OFFICE OF CHILD SUPPORT SERVICES
STATE SUMMARY
TITLE IV-D REPORT OF CASES WITH ORDERS
Comparison of June (FFY 2021 Vs FFY 2022)

County	JUNE 2021			JUNE 2022			Increase or Decrease (-) from FFY 2021 to FFY 2022
	Total Cases	Cases with Orders	% of Cases with Orders	Total Cases	Cases with Orders	% of Cases with Orders	
Atlantic	10,480	9,792	93.4%	10,045	9,278	92.4%	-1.1%
Bergen	10,676	10,463	98.0%	10,254	9,990	97.4%	-0.6%
Burlington	11,567	11,047	95.5%	11,190	10,434	93.2%	-2.3%
Camden	25,799	24,652	95.6%	24,675	23,324	94.5%	-1.0%
Cape May	2,696	2,553	94.7%	2,594	2,460	94.8%	0.1%
Cumberland	10,849	10,472	96.5%	10,468	9,926	94.8%	-1.7%
Essex	36,278	32,052	88.4%	34,353	30,056	87.5%	-0.9%
Gloucester	9,321	9,044	97.0%	8,958	8,507	95.0%	-2.1%
Hudson	17,819	16,197	90.9%	17,152	15,371	89.6%	-1.3%
Hunterdon	1,289	1,207	93.6%	1,209	1,127	93.2%	-0.4%
Mercer	11,876	10,968	92.4%	11,409	10,271	90.0%	-2.3%
Middlesex	15,467	14,622	94.5%	15,084	14,032	93.0%	-1.5%
Monmouth	11,969	11,499	96.1%	11,179	10,559	94.5%	-1.6%
Morris	5,196	5,077	97.7%	5,006	4,823	96.3%	-1.4%
Ocean	13,042	12,632	96.9%	12,557	12,035	95.8%	-1.0%
Passaic	17,247	15,349	89.0%	16,251	14,335	88.2%	-0.8%
Salem	3,789	3,646	96.2%	3,604	3,421	94.9%	-1.3%
Somerset	4,027	3,855	95.7%	3,861	3,615	93.6%	-2.1%
Sussex	2,321	2,296	98.9%	2,273	2,215	97.4%	-1.5%
Union	16,444	15,750	95.8%	15,938	15,117	94.8%	-0.9%
Warren	2,608	2,505	96.1%	2,262	2,165	95.7%	-0.3%
NJ TOTALS	240,760	225,678	93.7%	230,322	213,061	92.5%	-1.2%

SOURCE: NJKiDS (Based on Federal Performance Measures - OCSE-157)

TABLE 15:**OFFICE OF CHILD SUPPORT SERVICES****OFFICE OF****STATE SUMMARY****CHILD SUPPORT
SERVICES****TITLE IV-D COLLECTIONS ON CURRENT SUPPORT**

Comparison of June (FFY 2021 Vs FFY 2022)

County	JUNE 2021			JUNE 2022			Increase or Decrease (-) from FFY 2021 to FFY 2022
	Total Current Support Due	Total Current Support Distributed	Total Collection Rate	Total Current Support Due	Total Current Support Distributed	Total Collection Rate	
Atlantic	\$3,484,690	\$2,451,291	70.3%	\$3,357,736	\$2,136,131	63.6%	-6.7%
Bergen	\$7,582,234	\$5,959,003	78.6%	\$7,259,588	\$5,483,332	75.5%	-3.1%
Burlington	\$5,137,480	\$3,789,824	73.8%	\$4,882,197	\$3,338,551	68.4%	-5.4%
Camden	\$7,425,409	\$4,793,594	64.6%	\$7,073,301	\$4,177,258	59.1%	-5.5%
Cape May	\$981,698	\$720,247	73.4%	\$966,174	\$660,705	68.4%	-5.0%
Cumberland	\$2,843,506	\$1,844,398	64.9%	\$2,693,658	\$1,579,436	58.6%	-6.2%
Essex	\$9,837,036	\$6,378,221	64.8%	\$9,386,372	\$5,491,186	58.5%	-6.3%
Gloucester	\$3,833,044	\$2,737,647	71.4%	\$3,667,122	\$2,440,985	66.6%	-4.9%
Hudson	\$6,715,554	\$4,820,350	71.8%	\$6,462,799	\$4,223,578	65.4%	-6.4%
Hunterdon	\$1,089,968	\$907,680	83.3%	\$996,035	\$844,931	84.8%	1.6%
Mercer	\$3,681,331	\$2,513,306	68.3%	\$3,539,127	\$2,244,764	63.4%	-4.8%
Middlesex	\$6,901,690	\$5,101,450	73.9%	\$6,494,238	\$4,458,646	68.7%	-5.3%
Monmouth	\$6,428,571	\$4,913,496	76.4%	\$5,928,714	\$4,367,246	73.7%	-2.8%
Morris	\$3,973,132	\$3,055,611	76.9%	\$3,785,027	\$2,834,589	74.9%	-2.0%
Ocean	\$5,915,168	\$4,542,437	76.8%	\$5,681,096	\$4,051,731	71.3%	-5.5%
Passaic	\$6,007,934	\$4,112,785	68.5%	\$5,612,460	\$3,525,828	62.8%	-5.6%
Salem	\$1,005,752	\$641,931	63.8%	\$976,839	\$593,719	60.8%	-3.0%
Somerset	\$2,637,076	\$2,265,234	85.9%	\$2,456,688	\$2,008,740	81.8%	-4.1%
Sussex	\$1,620,707	\$1,321,728	81.6%	\$1,517,280	\$1,154,245	76.1%	-5.5%
Union	\$6,347,308	\$4,670,000	73.6%	\$6,242,016	\$4,203,322	67.3%	-6.2%
Warren	\$1,164,096	\$884,994	76.0%	\$1,069,257	\$808,133	75.6%	-0.4%
NJ TOTALS	\$94,613,385	\$68,425,228	72.3%	\$90,047,726	\$60,627,054	67.3%	-5.0%

SOURCE: NJKiDS (Based on Federal Performance Measures - OCSE-157)

TABLE 16:**OFFICE OF CHILD SUPPORT SERVICES****OFFICE OF****STATE SUMMARY****CHILD SUPPORT
SERVICES****TITLE IV-D CASES ARREARS COLLECTION REPORT**

Comparison of June (FFY 2021 Vs FFY 2022)

County	June 2021			June 2022			Increase or Decrease (-) from FFY 2021 to FFY 2022
	Total Cases with Arrears	Total Amount Collected	Average Arrears Collection per Case	Total Cases with Arrears	Total Amount Collected	Average Arrears Collection per Case	
Atlantic	6,703	\$1,152,002	\$171.86	6,228	\$711,736	\$114.28	-\$57.58
Bergen	6,931	\$1,687,561	\$243.48	6,496	\$1,299,178	\$200.00	-\$43.48
Burlington	7,505	\$1,402,615	\$186.89	6,934	\$946,974	\$136.57	-\$50.32
Camden	15,606	\$2,582,257	\$165.47	14,183	\$1,643,754	\$115.90	-\$49.57
Cape May	1,837	\$292,225	\$159.08	1,654	\$181,863	\$109.95	-\$49.12
Cumberland	6,841	\$1,088,001	\$159.04	6,110	\$595,470	\$97.46	-\$61.58
Essex	20,608	\$3,894,972	\$189.00	18,611	\$2,336,626	\$125.55	-\$63.45
Gloucester	6,169	\$1,198,069	\$194.21	5,576	\$721,047	\$129.31	-\$64.90
Hudson	11,107	\$1,948,405	\$175.42	10,441	\$1,197,127	\$114.66	-\$60.77
Hunterdon	793	\$250,280	\$315.61	705	\$161,451	\$229.01	-\$86.60
Mercer	7,646	\$1,308,870	\$171.18	6,881	\$837,817	\$121.76	-\$49.43
Middlesex	9,851	\$1,931,858	\$196.11	9,088	\$1,238,122	\$136.24	-\$59.87
Monmouth	7,689	\$1,715,645	\$223.13	6,799	\$1,376,998	\$202.53	-\$20.60
Morris	3,453	\$934,027	\$270.50	3,222	\$620,391	\$192.55	-\$77.95
Ocean	8,278	\$1,705,192	\$205.99	7,464	\$1,046,729	\$140.24	-\$65.75
Passaic	10,677	\$1,964,676	\$184.01	9,628	\$1,238,984	\$128.69	-\$55.32
Salem	2,334	\$299,013	\$128.11	2,092	\$210,697	\$100.72	-\$27.40
Somerset	2,588	\$777,686	\$300.50	2,356	\$448,136	\$190.21	-\$110.29
Sussex	1,559	\$322,478	\$206.85	1,448	\$322,602	\$222.79	\$15.94
Union	10,437	\$2,080,940	\$199.38	9,841	\$1,381,751	\$140.41	-\$58.97
Warren	1,608	\$283,846	\$176.52	1,441	\$205,509	\$142.62	-\$33.91
NJ TOTALS	150,220	\$28,820,618	\$191.86	137,198	\$18,722,962	\$136.47	-\$55.39

SOURCE: OCSE-157 Child Support Enforcement Annual Data Report

Table 17**WORK FIRST NEW JERSEY STATISTICAL SUMMARY****WFNJ****June 2022**

COUNTY	EMPLOYMENT DIRECTED ACTIVITIES			EMPLOYED OPEN (WFNJ RECIPIENT)	SUPPORT SERVICES ON ACTIVE CASE		CLOSED FOR EMPLOYMENT THIS MONTH	POST ASSISTANCE CHILD CARE
	CWEP	ALL OTHER TRAINING	JOB SEARCH		CHILD CARE	TRAINING REL. EXPENSES		
ATLANTIC	15	76	58	52	8	87	10	30
BERGEN	6	0	0	6	13	0	6	4
BURLINGTON	94	32	63	24	14	11	4	7
CAMDEN	30	143	0	37	37	1	6	16
CAPE MAY	0	10	5	8	1	3	0	4
CUMBERLAND	0	11	29	13	12	40	4	3
ESSEX	33	151	0	51	48	54	15	45
GLOUCESTER	0	6	0	16	9	0	2	1
HUDSON	0	316	27	77	105	16	20	15
HUNTERDON	0	0	0	0	2	0	8	0
MERCER	14	233	0	57	111	44	6	28
MIDDLESEX	0	41	17	23	10	0	7	11
MONMOUTH	0	13	3	19	21	5	2	19
MORRIS	0	3	0	1	2	0	2	0
OCEAN	1	138	0	10	16	4	1	10
PASSAIC	1	39	0	16	31	10	11	8
SALEM	0	11	0	4	5	0	1	0
SOMERSET	12	12	2	15	14	7	2	4
SUSSEX	0	0	1	0	0	0	0	0
UNION	0	57	0	5	10	1	8	1
WARREN	0	2	0	7	6	1	3	3
STATE TOTAL	206	1,294	205	441	475	284	118	209

Data is derived from NJ Division of Family Development's FAMIS Reports RM064-01 & RM703-51, AdHoc Reports 5549 & 5598 and SDW Report WR00022WZ_CC

ACRONYMS

EMERGENCY ASSISTANCE (EA) - Payments to those eligible for WFNJ/TANF or WFNJ/GA, authorized during the 30 consecutive days immediately following the emergency (defined as a substantial loss of shelter, food, clothing, or household furnishings by fire, flood or other similar disaster) or if eligible individual or family is in an imminent or actual state of homelessness.

NJ SNAP - Formerly the Food Stamp Program, now known as NJ SNAP (NJ Supplemental Nutrition Assistance Program) authorized by Congress as a nutritional supplement program to provide low income households with more food of greater variety and better nutrition. Program eligibility is based on household income, resources, and expenses for medical, shelter, and dependent care. CWA staff refers certain recipients to the New Jersey Department of Labor for participation in the Food Stamp Employment and Training Program.

FAMIS: Family Assistance Management Information System

GAAS: General Assistance Automated System

NJKIDS: New Jersey Kids Deserve Support (Child Support Information Management System)

NJ MMIS SHARED DATA WAREHOUSE: The Shared Data Warehouse (SDW) is the repository for New Jersey's DFD and Medicaid data. Since 2003, OptumInsight has administered the SDW and provided access to the data through a reporting tool known as Business Objects.

OMEGA: Online Management of Economic Goal Achievement

SSI-EA: Supplemental Security Income-Emergency Assistance

WFNJ: Work First New Jersey - Fully implemented July 1, 1997, this is New Jersey's welfare reform program which responds to the requirements of the Federal Personal Responsibility and Work Opportunity Reconciliation Act (**PRWORA**) of 1996. PRWORA established Temporary Assistance for Needy Families (**TANF**) as the replacement for AFDC cash assistance. WFNJ includes two segments, **WFNJ/TANF** for families with children, and **WFNJ/GA** (General Assistance) for single adults and couples without dependent children. WFNJ emphasizes achieving self-sufficiency and limits lifetime receipt of financial assistance to a total of five years.

EXPLANATORY NOTES

The Department of Human Services Division of Family Development provides basic income and an opportunity to achieve self-sufficiency for individuals and families served by the Division's programs. The Division provides leadership, direction and supervision to those public agencies responsible for administering those programs and plans for and develops policies to promote self-sufficiency.

WFNJ STATISTICAL SUMMARY (TABLE 17)

Employment Directed Activities (EDA) - From Activities Summary Report (OMEGA report # RM064). Unduplicated count of persons participating in Community Work Experience Program (CWEP), All Other Training, or Job Search.

Number of Persons Employed This Month, Still Receiving TANF - Individuals with open "empl" activity on OMEGA. Ad hoc report.

Participants Receiving Child Care Services - From Issuance Disbursement Summary (OMEGA report # RM703). Total number of active participants who show receipt of Child Care.

Number of Persons Closed on FAMIS Due to Employment - From FAMIS report #5549-RM-2

Post TANF and Receiving Child Care - Persons no longer in receipt of TANF but still receiving child care. From Share Data Warehouse Child Care case count based on Child Care payments (SDW report WR00022WZ_CC).