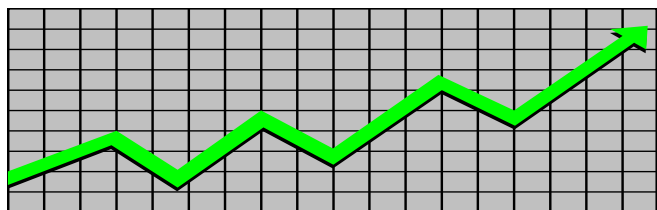


**State of New Jersey**  
**Department of Human Services**  
**Division of Family Development**

---

# **CURRENT PROGRAM STATISTICS**



---

**March 2022**

**Natasha Johnson, Assistant Commissioner**

## **TABLE OF CONTENTS**

### **HIGHLIGHTS:**

<b>WFNJ/TANF</b>	<b>ii</b>
<b>NJ SNAP</b>	<b>ii</b>
<b>EMERGENCY ASSISTANCE</b>	<b>ii</b>
<b>GENERAL ASSISTANCE</b>	<b>iii</b>
GA Emergency Assistance	iii
GA Program	iii
<b>CHILD SUPPORT SERVICES</b>	<b>iii</b>
<b>WORK FIRST NEW JERSEY (WFNJ)</b>	<b>iii</b>
<b>STATISTICS- BY STATE &amp; COUNTY</b>	<b>1</b>
Table 1: WFNJ/TANF Families & Persons (NJ Statewide) March 2020 to 2022	1
Table 2: WFNJ/TANF Families (by County)- March 2022	2
Table 2B: WFNJ/TANF Persons, Adults, & Children (by County)- March 2022	3
Table 3: TANF Work Participation Rates Over 12 Month Period (by County)- March 2022	4
Table 4: TANF Work Participation Rates Over 12 Month Period (NJ Statewide)- March 2022	5
Table 5: NJ SNAP Households/Persons (NJ Statewide) March 2020 to 2022	6
Table 6: NJ SNAP Recipient Trends (NJ Statewide) March 2020 to 2022	7
Table 7: NJ SNAP Households/Persons (by County)- March 2022	8
Table 8: Emergency Assistance Program (NJ Statewide) March 2020 to 2022	9
Table 9: Emergency Assistance Program (by County)- March 2022	10
Table 10: General Assistance Program (NJ Statewide) March 2020 to 2022	11
Table 11: General Assistance Program (by County)- March 2022	12
Table 12: Child Support Services Distributions (NJ Statewide) FFY 2022	13
Table 13: Child Support Services Paternities Established- March 2022	14
Table 14: Child Support Services Cases With Orders- March 2022	15
Table 15: Child Support Services Collections On Current Support- March 2022	16
Table 16: Child Support Services Cases With Payments On Arrears- March 2022	17
Table 17: WFNJ Statistical Summary- March 2022	18
<b>ACRONYMS</b>	<b>19</b>
<b>EXPLANATORY NOTES</b>	<b>20</b>
WFNJ Statistical Summary (Table 17)	20

## **DIVISION OF FAMILY DEVELOPMENT CURRENT PROGRAM STATISTICS**

### **MARCH 2022**

---

Each month the Division of Family Development publishes its program statistics for: WFNJ/TANF, NJ SNAP, Emergency Assistance, General Assistance, and Child Support Services. When possible, information is provided separately for children and adults. Many tables also provide trend data with information broken down by county for readers to consider. This report is compiled and prepared by The Bureau of Research & Reporting.

---

#### **WFNJ/TANF**

- As of the end of March, the TANF caseload had increased by 87 cases, from 10,292 in March 2021 to 10,379 in March 2022; an increase of 0.8%.
- The counties with caseloads that increased the most since March 2021 were Hunterdon (28.3%), Salem (23.8%), and Union (18.5%).
- The counties with caseloads that decreased the most since March 2021 were Essex (-28.4%), Warren (-26.2%), and Cape May (-6.5%).
- Of the WFNJ/TANF cases, 2,804 or 27% were child-only in March 2022.
- The counties with the most child-only cases were Camden (485), Hudson (325), and Passaic (300).
- Hudson (4,343), Camden (3,794), and Essex (3,230) counties had the greatest number of persons receiving TANF in March 2022.

#### **NJ SNAP (Formerly FOOD STAMPS)**

- In March 2022, there were 466,354 households receiving NJ SNAP benefits. The number of NJ SNAP households increased by 38,463 or 9%, since March 2021.
- There were 897,267 persons receiving NJ SNAP benefits as of March 2022; an increase of 65,742 or 7.9% since March 2021.
- The counties having the highest SNAP caseload increase since March 2021 were Essex (23.3%), Atlantic (14.3%), and Union (12.8%).
- The counties having the highest SNAP caseload decrease since March 2021 were Warren (-11.7%), Sussex (-7%), and Salem (-3.3%).

#### **EMERGENCY ASSISTANCE**

- There were 1,396 TANF families receiving Emergency Assistance (EA) in March 2022; a decrease of 117 or -7.7% since March 2021.
- In March 2022, EA payments were made for 672 SSI recipients.

## **DIVISION OF FAMILY DEVELOPMENT CURRENT PROGRAM STATISTICS MARCH 2022**

- There were 2,118 GA cases with Emergency Assistance payments in March 2022; a decrease of 106 or -4.8% since March 2021.
- The counties that showed the highest percent increase in Emergency Assistance payments were Salem (150%), Essex (81%), and Hunterdon (51.7%).
- The counties that showed the highest percent decrease in Emergency Assistance payments were Sussex (-40%), Warren (-36.1%), and Gloucester (-35.1%).

### **GENERAL ASSISTANCE**

- The total numbers of cases receiving GA has increased from 14,051 to 15,332 since March 2021; an increase of 9.1%.
- There were 11,462 Employable GA and 3,870 Unemployable GA cases in March 2022.
- The counties that showed a percent increase for GA cases were Hunterdon (55%), Atlantic (31.5%), and Union (29.8%) since March 2021.
- The counties that showed the highest percent decrease for GA cases since March 2021 were Warren (-17.2%), Sussex (-14.9%), and Gloucester (-12%).
- In March 2022, GA cases showed a 5.7% increase since February 2022.

### **CHILD SUPPORT SERVICES (QUARTERLY REPORT)**

- The total collection for the Child Support Services Program was about \$280 million from January 2022 to March 2022; a decrease of -4.72% over the same period from FFY .
- Total distributions decreased -7.4% from March 2021.

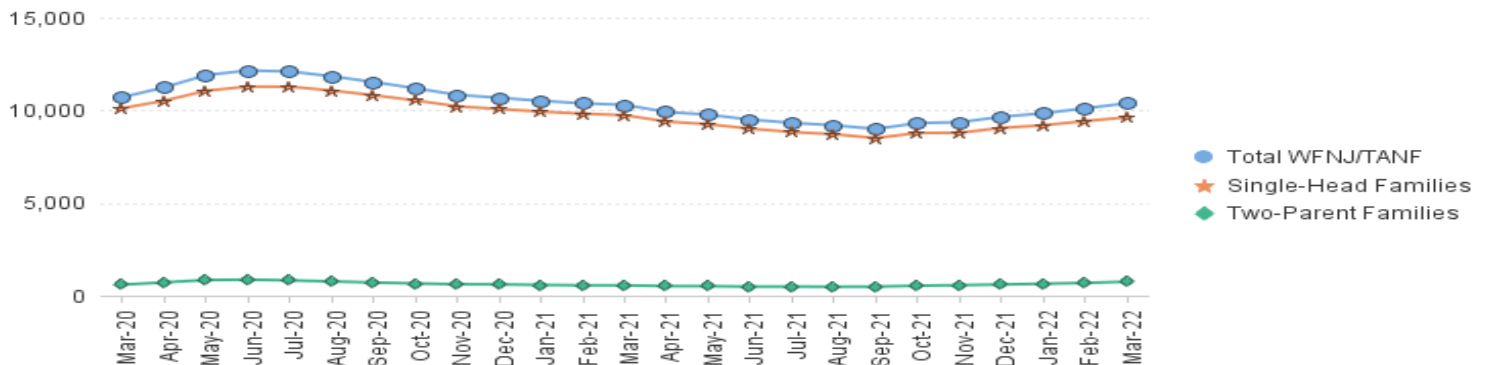
### **WORK FIRST NEW JERSEY (WFNJ)**

- During the report month of March 2022, there were 379 families in which at least one member was employed and an additional 92 families whose WFNJ assistance cases were closed due to employment - related earnings.
- The three counties with the greatest number of employed active WFNJ recipients were: Hudson (64), Essex (56), and Mercer (43).
- There were 206 former TANF cases receiving post-TANF support in the form of child care assistance.

**TABLE 1:**  
**WFNJ/TANF STATEWIDE NUMBER OF APPLICATIONS AND TERMINATIONS DURING MARCH 2022**  
**PROGRAM NUMBER OF ELIGIBLE FAMILIES & PERSONS RECEIVING WFNJ/TANF FOR MARCH 2022**

MARCH 2020 THROUGH MARCH 2022												
		Cases Added	Cases Closed	Child-Only Cases ‡	Total Single-Head Families	2-Parent Families	Total WFNJ/TANF Families	%CHNG (1 Yr.)	Total Persons	%CHNG (1 Yr.)	Adults	Children
2020	MAR	915	1,024	3,612	10,113	592	10,705	-3.7%	27,196	-1.5%	7,685	19,511
	APR	1,179	712	3,621	10,519	716	11,235	3.7%	28,765	6.7%	8,330	20,435
	MAY	832	232	3,696	11,057	845	11,902	10.2%	30,734	14.4%	9,051	21,683
	JUN	539	278	3,722	11,281	866	12,147	12.9%	31,370	17.6%	9,291	22,079
	JUL	458	526	3,686	11,274	826	12,100	14.2%	31,216	18.6%	9,240	21,976
	AUG	410	660	3,665	11,070	768	11,838	10.2%	30,454	13.9%	8,941	21,513
	SEP	475	796	3,603	10,817	711	11,528	7.3%	29,531	10.2%	8,636	20,895
	OCT	534	904	3,564	10,532	659	11,191	7.6%	28,657	9.6%	8,286	20,371
	NOV	419	767	3,470	10,218	617	10,835	-1.1%	27,738	0.3%	7,982	19,756
	DEC	434	595	3,410	10,071	607	10,678	-2.5%	27,371	-1.4%	7,875	19,496
2020	Average	682	724	3,614	10,607	698	11,306		28,973		8,390	20,583
2021	JAN	400	585	3,379	9,932	580	10,512	-1.7%	26,960	-0.6%	7,713	19,247
	FEB	378	504	3,347	9,818	559	10,377	-4.1%	26,520	-3.6%	7,589	18,931
	MAR	397	481	3,311	9,735	557	10,292	-3.9%	26,335	-3.2%	7,538	18,797
	APR	298	704	3,224	9,395	518	9,913	-11.8%	25,276	-12.1%	7,207	18,069
	MAY	264	510	3,209	9,250	513	9,763	-18.0%	24,858	-19.1%	7,067	17,791
	JUN	373	636	3,141	9,008	489	9,497	-21.8%	24,146	-23.0%	6,845	17,301
	JUL	391	590	3,068	8,829	493	9,322	-23.0%	23,785	-23.8%	6,747	17,038
	AUG	415	544	3,029	8,709	482	9,191	-22.4%	23,445	-23.0%	6,644	16,801
	SEP	388	588	2,945	8,507	489	8,996	-22.0%	23,009	-22.1%	6,540	16,469
	OCT	833	564	2,921	8,779	538	9,317	-16.7%	23,888	-16.6%	6,934	16,954
	NOV	656	614	2,816	8,791	568	9,359	-13.6%	24,282	-12.5%	7,111	17,171
	DEC	702	432	2,824	9,054	601	9,655	-9.6%	25,177	-8.0%	7,432	17,745
2021	Average	458	563	3,101	9,151	532	9,683		24,807		7,114	17,693
2022	JAN	667	484	2,796	9,193	645	9,838	-6.4%	25,789	-4.3%	7,687	18,102
	FEB	655	414	2,794	9,424	689	10,113	-2.5%	26,638	0.4%	8,008	18,630
	MAR	715	512	2,804	9,623	756	10,379	0.8%	27,433	4.2%	8,331	19,102
2022	Average To Date	679	470	2,798	9,413	697	10,110		26,620		8,009	18,611

**NJ STATEWIDE**  
**Eligible Families Receiving WFNJ/TANF**  
**MARCH 2020 THROUGH MARCH 2022**



Data is derived from NJ MMIS Shared Data Warehouse Issuance files.  
 Effective July 2013 this data query source was converted to the SDW

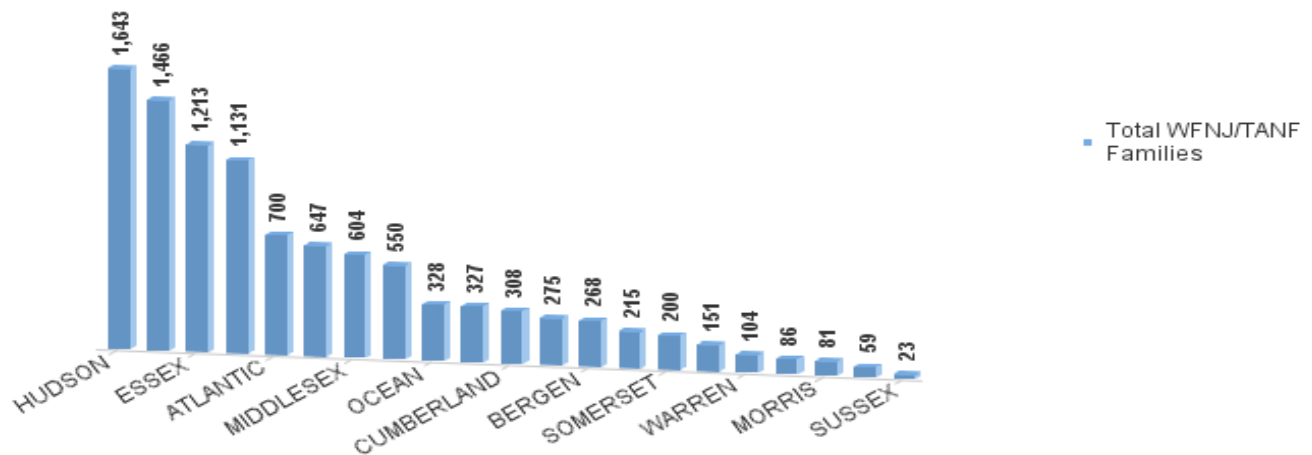
‡ Child-only cases are defined as families in which no eligible adult receives TANF program benefits, yet the family continues to be headed by at least one of the biological parents, or grandparents, or other appropriate adult.

**TABLE 2:**  
**WFNJ/TANF**  
**PROGRAM**

**NUMBER OF APPLICATIONS AND TERMINATIONS BY COUNTY DURING MARCH 2022**  
**NUMBER OF ELIGIBLE FAMILIES RECEIVING WFNJ/TANF FOR MARCH 2022**

County	Cases Added	Cases Closed **	Child-Only Cases ‡	1-Adult Cases	Total Single-Head Families	Total 2-Parent Families	Total WFNJ/TANF Families	%CHNG (3 Mon)	%CHNG (1 Yr.)
ATLANTIC	43	24	235	416	651	49	700	9.0%	4.0%
BERGEN	24	7	54	189	243	25	268	6.3%	6.8%
BURLINGTON	17	24	102	209	311	16	327	1.6%	-4.9%
CAMDEN	83	49	485	900	1,385	81	1,466	5.4%	8.5%
CAPE MAY	8	2	28	54	82	4	86	10.3%	-6.5%
CUMBERLAND	26	12	122	163	285	23	308	6.6%	1.0%
ESSEX	83	68	286	869	1,155	58	1,213	2.6%	-28.4%
GLOUCESTER	16	9	81	185	266	9	275	9.1%	5.8%
HUDSON	130	110	325	1,155	1,480	163	1,643	7.2%	10.6%
HUNTERDON	3	0	8	43	51	8	59	13.5%	28.3%
MERCER	42	39	190	434	624	23	647	3.7%	5.9%
MIDDLESEX	38	28	196	376	572	32	604	3.4%	8.1%
MONMOUTH	20	8	60	147	207	8	215	12.0%	13.2%
MORRIS	7	8	23	48	71	10	81	0.0%	0.0%
OCEAN	27	21	68	244	312	16	328	3.5%	0.0%
PASSAIC	57	37	300	759	1,059	72	1,131	4.0%	3.8%
SALEM	16	15	36	99	135	16	151	12.7%	23.8%
SOMERSET	14	9	44	140	184	16	200	5.3%	9.9%
SUSSEX	3	2	7	12	19	4	23	21.1%	0.0%
UNION	54	29	129	308	437	113	550	7.0%	18.5%
WARREN	4	11	25	69	94	10	104	2.0%	-26.2%
<b>NJ Total</b>	<b>715</b>	<b>512</b>	<b>2,804</b>	<b>6,819</b>	<b>9,623</b>	<b>756</b>	<b>10,379</b>	<b>5.5%</b>	<b>0.8%</b>

**Total WFNJ/TANF Families**  
**MARCH 2022**  
**By County**



Data is derived from NJ MMIS Shared Data Warehouse Issuance files.  
Effective July 2013 this data query source was converted to the SDW

‡ Child-only cases are defined as families in which no eligible adult receives TANF program benefits, yet the family continues to be headed by at least one of the biological parents, or grandparents, or other appropriate adult

\*\* 'Cases closed' include cases that received a benefit in the prior month, but did not receive any TANF benefit for the report month.

Δ=higher caseload % change

\*=lower caseload % change

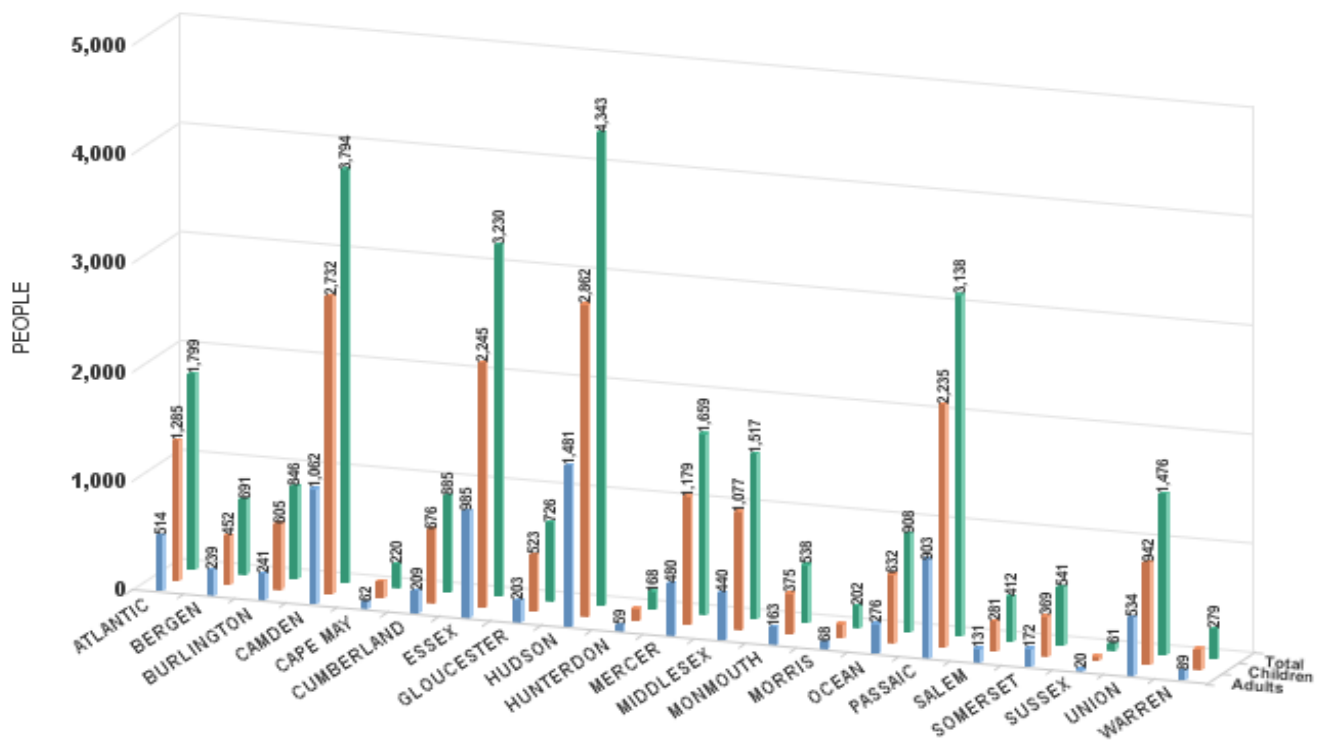
TABLE 2B :

WFNJ/TANF  
PROGRAMNUMBER OF PARTICIPATING PERSONS, ADULTS, AND CHILDREN  
BY COUNTY FOR MARCH 2022PERSONS

County	Adults	Children	Child/Adult Ratio	Total Persons	% Chng (1 Yr)	Persons Per Case
ATLANTIC	514	1,285	2.50	1,799	6.8%	2.57
BERGEN	239	452	1.89	691	9.0%	2.58
BURLINGTON	241	605	2.51	846	-3.5%	2.59
CAMDEN	1,062	2,732	2.57	3,794	12.6%	2.59
CAPE MAY	62	158	2.55	220	-9.1%	*
CUMBERLAND	209	676	3.23	885	1.3%	2.87
ESSEX	985	2,245	2.28	3,230	-26.3%	*
GLOUCESTER	203	523	2.58	726	18.2%	2.64
HUDSON	1,481	2,862	1.93	4,343	15.4%	2.64
HUNTERDON	59	109	1.85	168	36.6%	Δ
MERCER	480	1,179	2.46	1,659	7.7%	2.56
MIDDLESEX	440	1,077	2.45	1,517	8.4%	2.51
MONMOUTH	163	375	2.30	538	22.8%	2.50
MORRIS	68	134	1.97	202	1.5%	2.49
OCEAN	276	632	2.29	908	3.7%	2.77
PASSAIC	903	2,235	2.48	3,138	7.9%	2.77
SALEM	131	281	2.15	412	30.8%	Δ
SOMERSET	172	369	2.15	541	15.6%	2.71
SUSSEX	20	41	2.05	61	-1.6%	2.65
UNION	534	942	1.76	1,476	24.2%	Δ
WARREN	89	190	2.13	279	-26.2%	*
NJ Total	8,331	19,102	2.29	27,433	4.2%	2.64

Δ=higher caseload % change

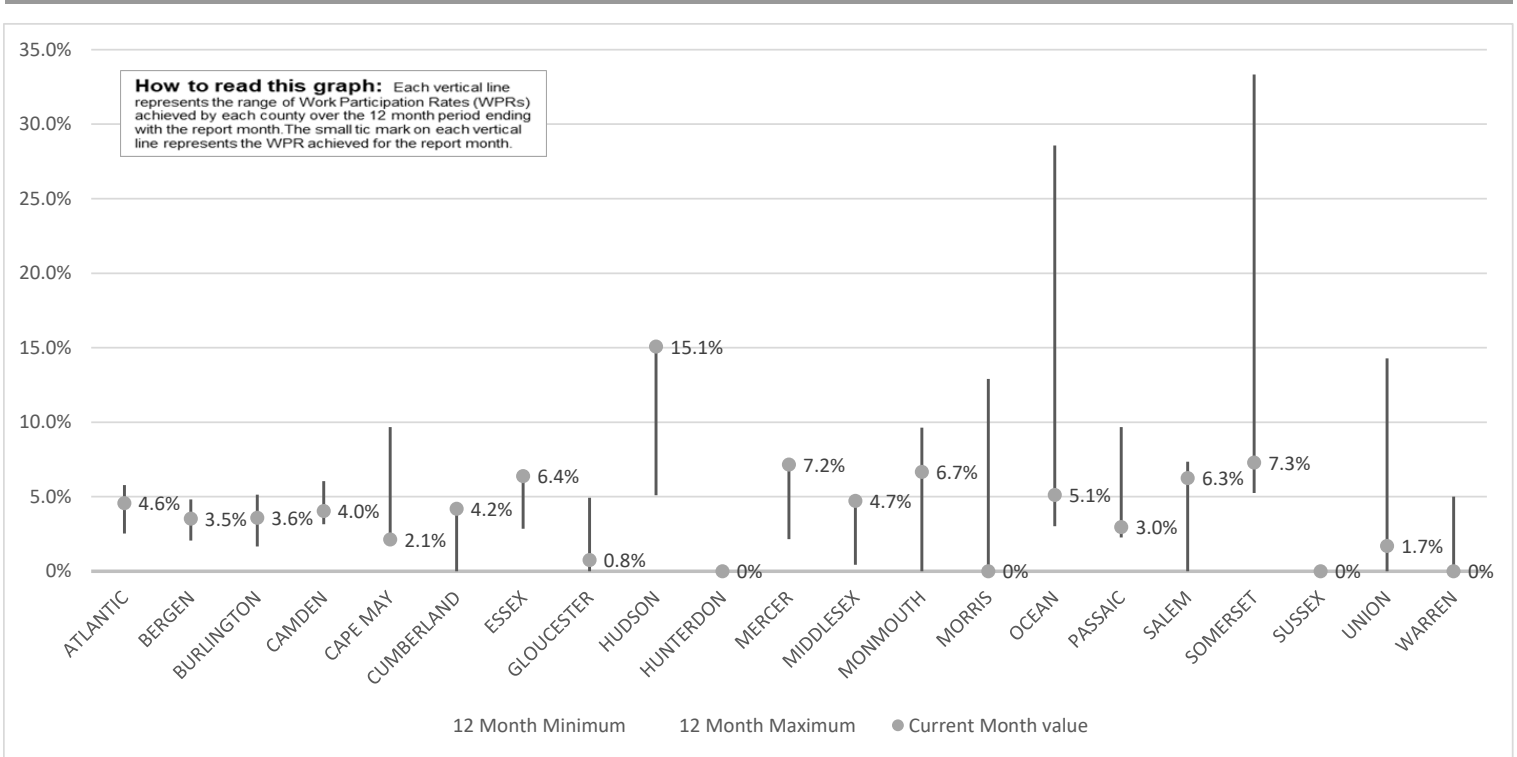
\*=lower caseload % change



Data is derived from NJ MMIS Shared Data Warehouse Issuance files.  
Effective July 2013 this data query source was converted to the SDW

TABLE 3 :

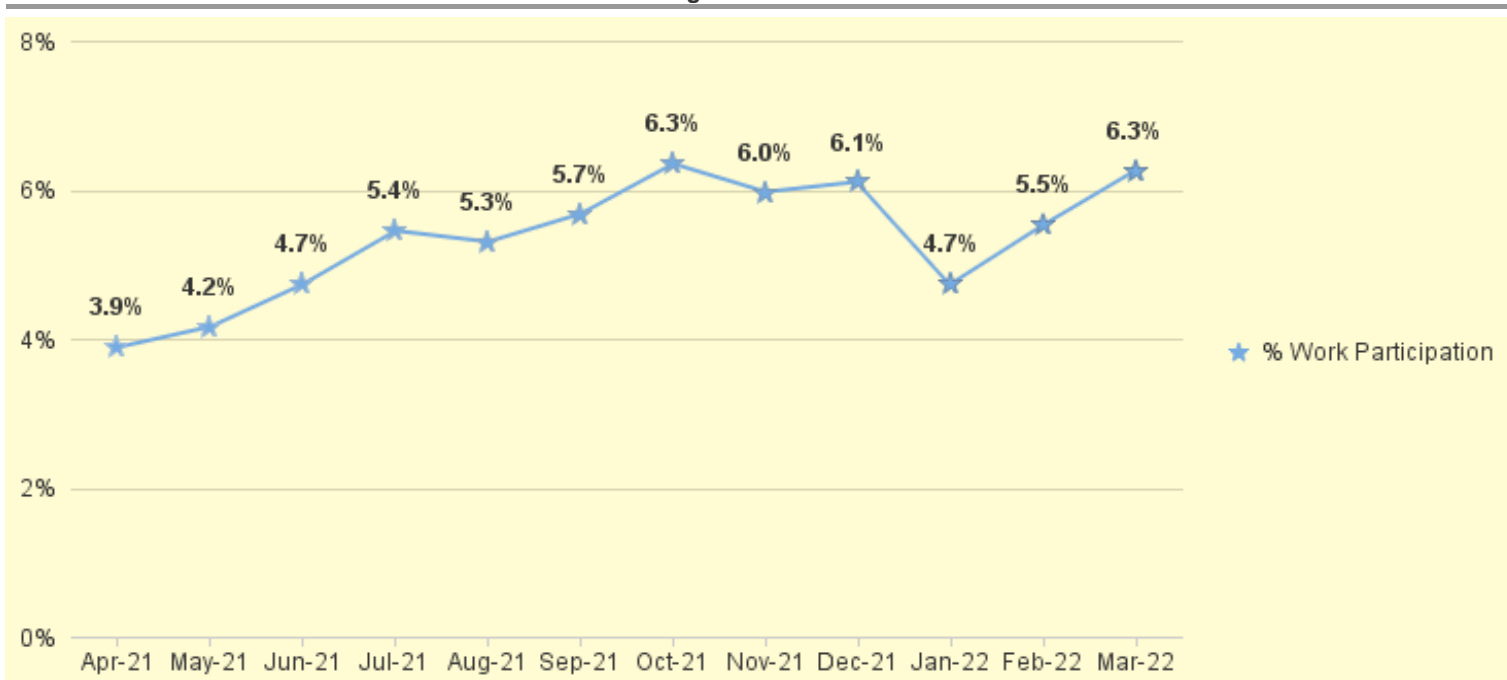
**Work Participation Rates Achieved Over 12 Month Period  
Ending with MARCH 2022**



Data is derived from NJ MMIS Shared Data Warehouse Issuance files.  
Effective July 2013 this data query source was converted to the SDW



TABLE 4 :

WFNJ/TANF Work Participation Rates  
for 12-Month Period Ending with MARCH 2022 Statewide

\* The Work Participation rate measures the number of countable Temporary Assistance for Needs Families (TANF) participants based on federal formula. The reported rate is considered to be preliminary until officially calculated by the federal government soon after the close of each federal fiscal year.

**TABLE 5 :**  
**NJ SNAP**                      **NUMBER OF PARTICIPATING HOUSEHOLDS, PERSONS, ADULTS**  
**(FOOD STAMPS)**                      **AND CHILDREN FOR MARCH 2022 (STATEWIDE)**

**MARCH 2020 THROUGH MARCH 2022**

		HOUSEHOLDS				PERSONS				Age 60+	People with a disability
		WFNJ/ TANF	Other low income	Total	% CHNG (1 YR)	Adults	Children	TOTAL	% CHNG (1 YR)		
<b>2020</b>	MAR	10,328	324,689	<b>335,017</b>	-4.8%	357,989	299,375	<b>657,364</b>	-5.8%	117,369	201,521
	APR	11,112	337,037	<b>348,149</b>	0.3%	373,744	309,095	<b>682,839</b>	-0.6%	118,173	204,375
	MAY	11,513	353,998	<b>365,511</b>	5.2%	394,281	323,636	<b>717,917</b>	4.4%	119,744	208,152
	JUN	11,522	358,302	<b>369,824</b>	6.7%	398,959	326,357	<b>725,316</b>	5.9%	120,137	209,224
	JUL	11,336	364,797	<b>376,133</b>	9.4%	405,652	329,166	<b>734,818</b>	8.1%	120,881	211,115
	AUG	11,044	373,293	<b>384,337</b>	10.8%	414,644	333,705	<b>748,349</b>	9.0%	118,173	204,375
	SEP	10,928	384,063	<b>394,991</b>	15.7%	426,710	342,621	<b>769,331</b>	14.1%	122,341	214,255
	OCT	10,605	393,716	<b>404,321</b>	17.8%	437,538	350,440	<b>787,978</b>	16.2%	123,068	216,012
	NOV	10,335	395,876	<b>406,211</b>	18.7%	440,136	350,631	<b>790,767</b>	17.1%	123,104	216,208
	DEC	10,308	401,212	<b>411,520</b>	20.8%	446,083	354,408	<b>800,491</b>	19.3%	123,498	221,131
<b>2020</b>	<b>Average</b>	<b>10,790</b>	<b>361,610</b>	<b>372,400</b>		<b>401,036</b>	<b>326,988</b>	<b>728,024</b>		<b>120,180</b>	<b>209,182</b>
<b>2021</b>	JAN	10,214	409,050	<b>419,264</b>	24.8%	454,910	360,490	<b>815,400</b>	23.6%	123,751	221,129
	FEB	9,980	413,080	<b>423,060</b>	25.6%	459,801	362,760	<b>822,561</b>	24.4%	123,888	221,585
	MAR	9,632	418,259	<b>427,891</b>	27.7%	465,302	366,223	<b>831,525</b>	26.5%	124,614	222,961
	APR	9,474	423,186	<b>432,660</b>	24.3%	470,412	369,625	<b>840,037</b>	23.0%	125,182	224,256
	MAY	9,371	428,961	<b>438,332</b>	19.9%	476,827	373,151	<b>849,978</b>	18.4%	125,750	225,339
	JUN	9,833	440,525	<b>450,358</b>	21.8%	490,430	393,310	<b>883,740</b>	21.8%	126,085	227,479
	JUL	9,067	437,889	<b>446,956</b>	18.8%	485,975	379,528	<b>865,503</b>	17.8%	126,552	227,352
	AUG	9,070	442,333	<b>451,403</b>	17.4%	490,577	383,106	<b>873,683</b>	16.7%	127,091	228,513
	SEP	9,561	447,902	<b>457,463</b>	15.8%	497,122	390,345	<b>887,467</b>	15.4%	127,550	229,863
	OCT	9,822	452,139	<b>461,961</b>	14.3%	502,415	388,925	<b>891,340</b>	13.1%	128,700	231,751
	NOV	9,967	455,343	<b>465,310</b>	14.5%	506,476	391,904	<b>898,380</b>	13.6%	129,292	233,050
	DEC	10,138	458,239	<b>468,377</b>	13.8%	510,116	392,757	<b>902,873</b>	12.8%	129,744	238,680
<b>2021</b>	<b>Average</b>	<b>9,677</b>	<b>435,576</b>	<b>445,253</b>		<b>484,197</b>	<b>379,344</b>	<b>863,541</b>		<b>126,517</b>	<b>227,663</b>
<b>2022</b>	JAN	10,418	457,935	<b>468,353</b>	11.7%	509,801	392,651	<b>902,452</b>	10.7%	157,425	236,238
	FEB	10,486	451,733	<b>462,219</b>	9.3%	503,693	385,199	<b>888,892</b>	8.1%	156,540	232,864
	MAR	10,588	455,766	<b>466,354</b>	9.0%	508,290	388,977	<b>897,267</b>	7.9%	158,331	234,617
<b>2022</b>	<b>Average To Date</b>	<b>10,497</b>	<b>455,145</b>	<b>465,642</b>		<b>507,261</b>	<b>388,942</b>	<b>896,204</b>		<b>157,432</b>	<b>234,573</b>

This Table is based on those Households & Persons that recived SNAP issuances (benefits) during the month

Data is derived from NJ MMIS Shared Data Warehouse.

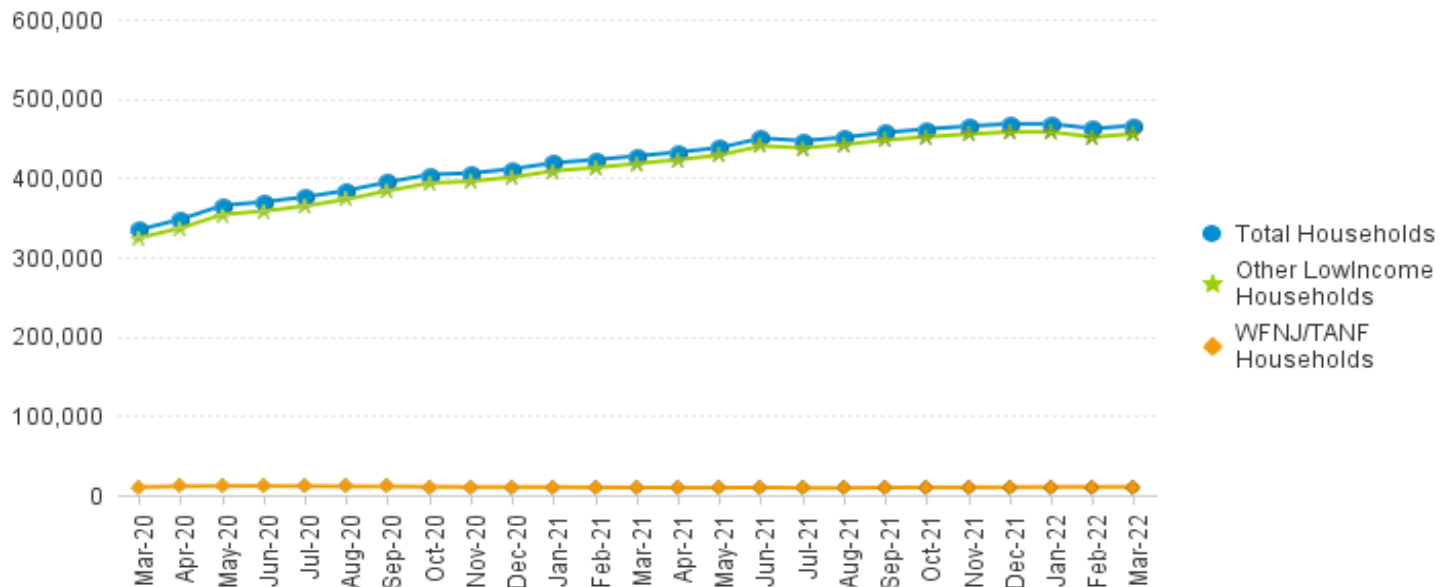
Effective July 2013 this data query source was converted to the SDW.

\* Age 60+ and People with a disability columns are independent subsets of total persons. An individual might appear in both columns.

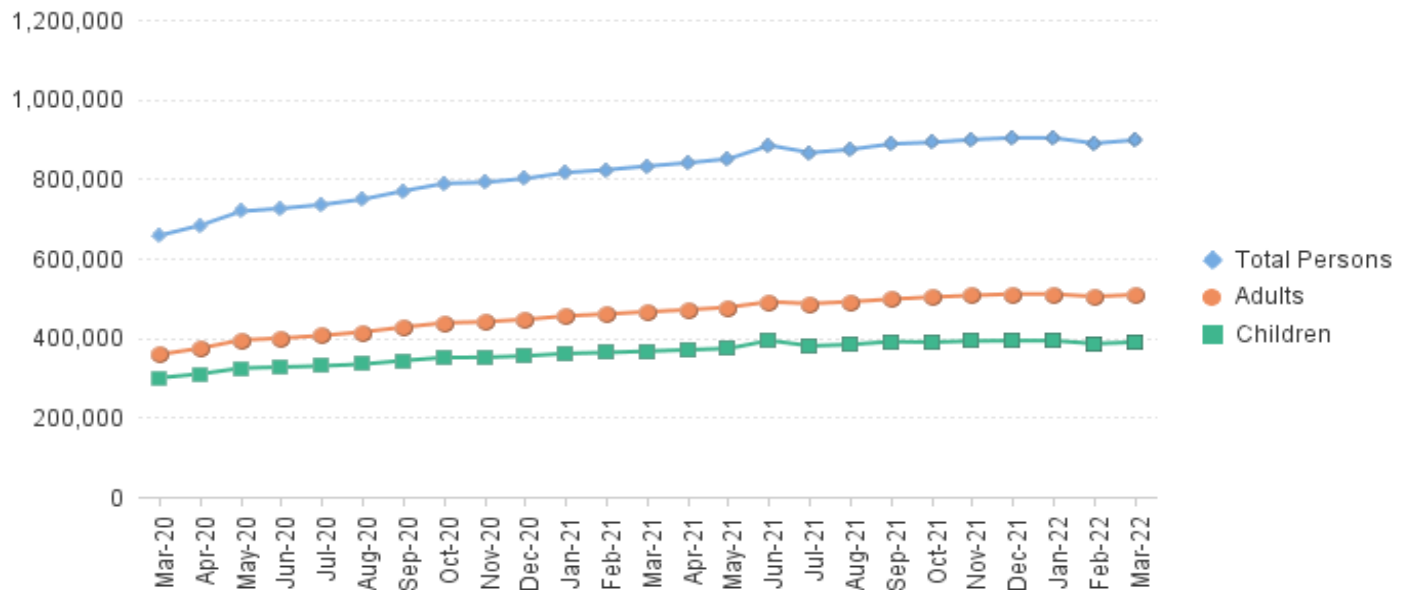
**TABLE 6:**  
**NJ SNAP**  
**(FOOD STAMPS)**

**TRENDS FOR PARTICIPATING HOUSEHOLDS & PERSONS**  
**MARCH 2020 THROUGH MARCH 2022 (STATEWIDE)**

**Statewide NJ SNAP Households: MARCH 2020 Through MARCH 2022**



**Statewide NJ SNAP Persons: MARCH 2020 Through MARCH 2022**



Data is derived from NJ MMIS Shared Data Warehouse Issuance files.

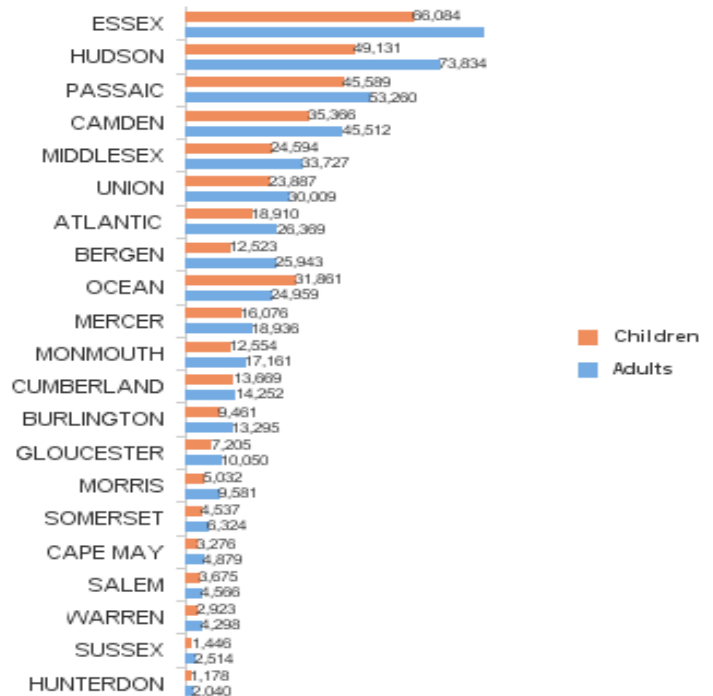
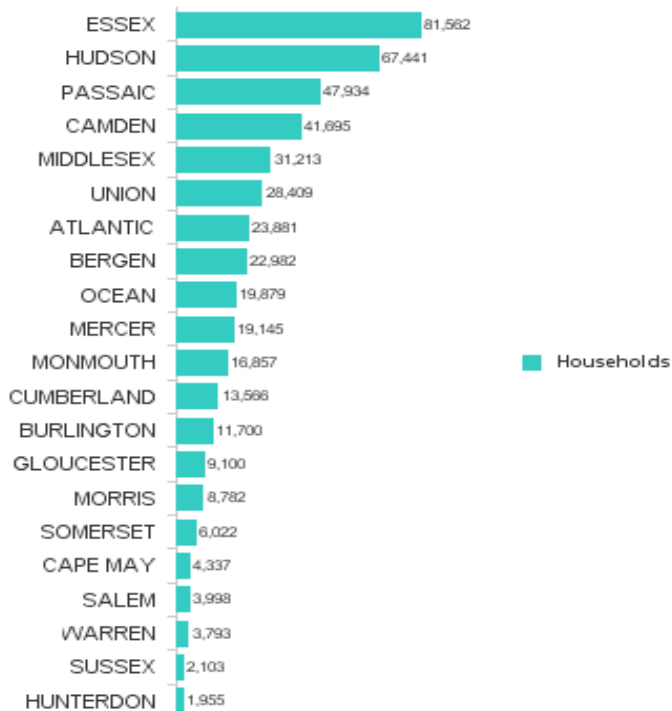
Effective July 2013 this data query source was converted to the SDW

TABLE 7 :  
NJ SNAPNUMBER OF PARTICIPATING HOUSEHOLDS, PERSONS, ADULTS  
AND CHILDREN BY COUNTY FOR MARCH 2022

County	HOUSEHOLDS				PERSONS				Age 60+	People with a disability
	WFNJ/ TANF	Other low income	TOTAL	% Chng (1 Yr)	Adults	Children	TOTAL	% Chng (1 Yr)		
ATLANTIC	692	23,189	23,881	14.3% Δ	26,369	18,910	45,279	13.3% Δ	7,015	11,635
BERGEN	268	22,714	22,982	5.3%	25,943	12,523	38,466	5.8%	13,914	16,016
BURLINGTON	356	11,344	11,700	1.7%	13,295	9,461	22,756	1.5%	3,693	6,840
CAMDEN	1,431	40,264	41,695	11.4%	45,512	35,366	80,878	9.6%	10,891	20,627
CAPE MAY	87	4,250	4,337	-0.6%	4,879	3,276	8,155	-0.8%	1,338	2,329
CUMBERLAN	293	13,273	13,566	1.3%	14,252	13,669	27,921	0.7%	3,538	7,180
ESSEX	1,549	80,013	81,562	23.3% Δ	86,781	66,084	152,865	19.4% Δ	21,431	33,995
GLOUCESTER	246	8,854	9,100	-2.0%	10,050	7,205	17,255	-3.6%	2,929	5,988
HUDSON	1,576	65,865	67,441	9.0%	73,834	49,131	122,965	6.8%	23,951	30,519
HUNTERDON	56	1,899	1,955	9.3%	2,040	1,178	3,218	6.5%	709	1,061
MERCER	651	18,494	19,145	2.8%	18,936	16,076	35,012	2.1%	5,459	10,550
MIDDLESEX	613	30,600	31,213	7.1%	33,727	24,594	58,321	6.1%	14,067	18,006
MONMOUTH	223	16,634	16,857	-3.2%	17,161	12,554	29,715	-3.6%	6,548	9,701
MORRIS	97	8,685	8,782	6.6%	9,581	5,032	14,613	5.2%	4,779	5,517
OCEAN	336	19,543	19,879	6.9%	24,959	31,861	56,820	10.5%	6,536	10,473
PASSAIC	1,146	46,788	47,934	4.8%	53,260	45,589	98,849	5.1%	16,442	21,418
SALEM	138	3,860	3,998	-3.3% *	4,566	3,675	8,241	-1.9%	1,127	2,263
SOMERSET	195	5,827	6,022	4.2%	6,324	4,537	10,861	3.1%	2,487	3,518
SUSSEX	33	2,070	2,103	-7.0% *	2,514	1,446	3,960	-5.3% *	868	1,490
UNION	507	27,902	28,409	12.8% Δ	30,009	23,887	53,896	12.0% Δ	9,365	13,192
WARREN	95	3,698	3,793	-11.7% *	4,298	2,923	7,221	-13.1% *	1,244	2,299
<b>NJ TOTAL</b>	<b>10,588</b>	<b>455,766</b>	<b>466,354</b>	<b>9.0%</b>	<b>508,290</b>	<b>388,977</b>	<b>897,267</b>	<b>7.9%</b>	<b>158,331</b>	<b>234,617</b>

Δ=higher caseload % change

\*=lower caseload % change

Total NJ SNAP Recipients  
MARCH 2022 by CountyData is derived from NJ MMIS Shared Data Warehouse.  
Effective July 2013 this data query source was converted to the SDW.

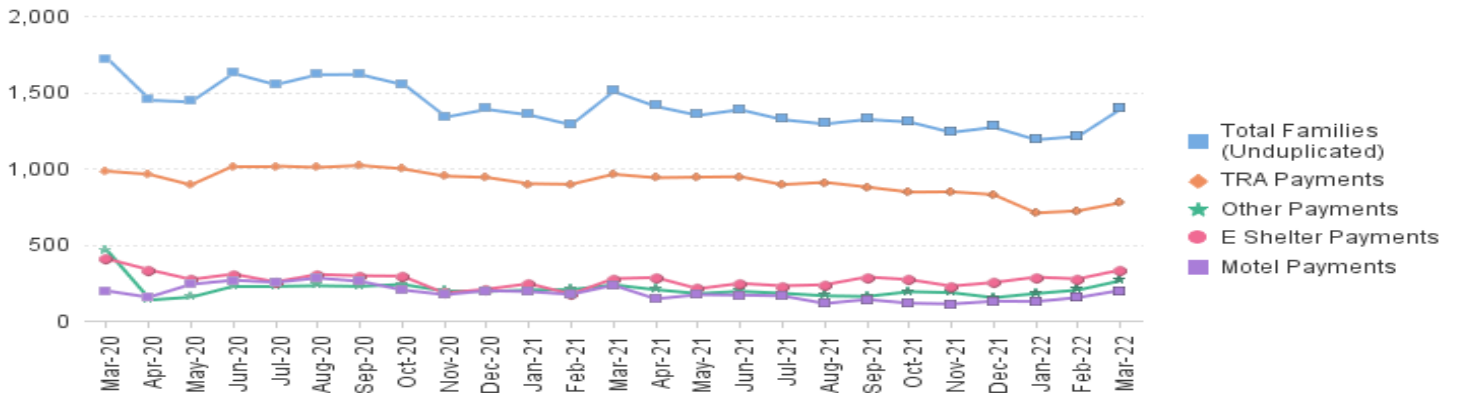
\* Age 60+ and People with a disability columns are independent subsets of total persons. An individual might appear in both columns.

TABLE 8 :

**EMERGENCY ASSISTANCE (STATEWIDE)**      **TOTAL NUMBER OF ELIGIBLE FAMILIES RECEIVING EMERGENCY ASSISTANCE PAYMENTS**  
**MARCH 2020 THROUGH MARCH 2022 - STATEWIDE**

		Total WFNJ/EA Families (Undupl)	% CHNG (1 YR)	Temp Rent Asst. Payments (Undupl)	% CHNG (1 YR)	Motel Housing Payments (Undupl)	% CHNG (1 YR)	Shelter/Transitional Housing Payments (Undupl)	% CHNG (1 YR)	Other WFNJ/EA Payments (Undupl)	% CHNG (1 YR)
<b>2020</b>	MAR	1,723	14.5%	980	16.3%	195	62.5%	406	-3.1%	462	19.4%
	APR	1,455	-5.9%	960	18.4%	153	-12.1%	334	-23.9%	144	-64.0%
	MAY	1,444	-9.1%	890	7.9%	238	63.0%	270	-41.0%	163	-63.5%
	JUN	1,632	5.9%	1,014	23.8%	265	61.6%	305	-28.6%	234	-43.3%
	JUL	1,557	3.0%	1,014	33.2%	251	88.7%	254	-43.3%	234	-42.2%
	AUG	1,623	-3.0%	1,005	18.0%	279	75.5%	303	-40.9%	238	-46.3%
	SEP	1,624	-1.0%	1,018	22.1%	258	41.0%	294	-32.1%	234	-47.9%
	OCT	1,558	-14.5%	996	16.1%	201	-17.6%	292	-42.5%	247	-54.8%
	NOV	1,343	-13.6%	948	8.8%	170	19.7%	180	-52.9%	204	-50.6%
	DEC	1,395	-14.5%	939	9.8%	196	2.1%	206	-53.2%	201	-51.8%
<b>2020</b>	<b>Average</b>	<b>1,560</b>		<b>970</b>		<b>220</b>		<b>303</b>		<b>274</b>	
<b>2021</b>	JAN	1,359	-23.1%	898	-5.4%	190	-24.3%	242	-42.7%	210	-59.1%
	FEB	1,294	-19.1%	894	-4.1%	172	-5.0%	174	-52.3%	213	-47.9%
	MAR	1,513	-12.2%	960	-2.0%	232	19.0%	275	-32.3%	244	-47.2%
	APR	1,415	-2.7%	937	-2.4%	142	-7.2%	283	-15.3%	212	47.2%
	MAY	1,356	-6.1%	941	5.7%	170	-28.6%	209	-22.6%	187	14.7%
	JUN	1,393	-14.6%	944	-6.9%	167	-37.0%	244	-20.0%	201	-14.1%
	JUL	1,328	-14.7%	892	-12.0%	162	-35.5%	228	-10.2%	189	-19.2%
	AUG	1,299	-20.0%	907	-9.8%	112	-59.9%	235	-22.4%	172	-27.7%
	SEP	1,329	-18.2%	876	-13.9%	138	-46.5%	286	-2.7%	168	-28.2%
	OCT	1,313	-15.7%	843	-15.4%	114	-43.3%	269	-7.9%	199	-19.4%
	NOV	1,244	-7.4%	845	-10.9%	109	-35.9%	226	25.6%	193	-5.4%
	DEC	1,278	-8.4%	826	-12.0%	127	-35.2%	250	21.4%	160	-20.4%
<b>2021</b>	<b>Average</b>	<b>1,343</b>		<b>897</b>		<b>153</b>		<b>243</b>		<b>196</b>	
<b>2022</b>	JAN	1,196	-12.0%	706	-21.4%	125	-34.2%	285	17.8%	187	-11.0%
	FEB	1,218	-5.9%	720	-19.5%	151	-12.2%	274	57.5%	210	-1.4%
	MAR	1,396	-7.7%	773	-19.5%	198	-14.7%	332	20.7%	271	11.1%
<b>2022</b>	<b>Average To Date</b>	<b>1,270</b>		<b>733</b>		<b>158</b>		<b>297</b>		<b>223</b>	

**NJ STATEWIDE**  
**Families Receiving Emergency Assistance**  
**MARCH 2020 THROUGH MARCH 2022**



WFNJ/EA data is derived from NJ MMIS Shared Data Warehouse.  
Effective July 2013 this data query source was converted to the SDW.

\* Effective Feb '11 Transitional Housing Payments were removed from 'Other EA Payments' and added to 'Shelter Payments'.

**TABLE 9 :**  
**EMERGENCY ASSISTANCE (BY COUNTY)**      **TOTAL NUMBER OF ELIGIBLE FAMILIES RECEIVING EMERGENCY ASSISTANCE PAYMENTS BY COUNTY (UNDUPLICATED CASES) FOR MARCH 2022**

County	TOTAL WFNJ/EA Families (Undupl)	% CHNG From MAR 21		Temp Rent Asst. Payments (Undupl)	Motel Housing Payments (Undupl)	Shelter/Transitional Housing Payments (Undupl)	Other WFNJ/EA Payments (Undupl)	SSI Receipients Receiving EA **
ATLANTIC	39	-43.5%	*	36	0	0	8	36
BERGEN	47	11.9%		26	2	10	13	45
BURLINGTON	72	7.5%		6	21	47	5	60
CAMDEN	56	-20.0%		14	19	29	6	31
CAPE MAY	17	-15.0%		8	9	0	1	11
CUMBERLAND	1	0%		0	0	1	0	0
ESSEX	123	3.4%		32	0	86	11	11
GLOUCESTER	16	45.5%	Δ	3	0	4	13	2
HUDSON	227	15.8%		172	4	43	56	96
HUNTERDON	10	42.9%		8	0	0	5	4
MERCER	110	2.8%		60	26	11	27	81
MIDDLESEX	133	-21.8%		85	24	8	50	53
MONMOUTH	29	45.0%	Δ	0	7	22	0	70
MORRIS	14	-17.6%		9	5	0	3	9
OCEAN	79	-30.7%	*	48	21	1	16	40
PASSAIC	206	-20.2%		160	9	19	25	21
SALEM	2	0%		0	1	1	0	3
SOMERSET	69	-10.4%		42	6	12	17	66
SUSSEX	2	100.0%	Δ	0	0	2	0	2
UNION	129	3.2%		57	37	36	12	30
WARREN	15	-25.0%	*	7	7	0	3	1
<b>NJ Total</b>	<b>1,396</b>	<b>-7.7%</b>		<b>773</b>	<b>198</b>	<b>332</b>	<b>271</b>	<b>672</b>

Δ=higher caseload % change

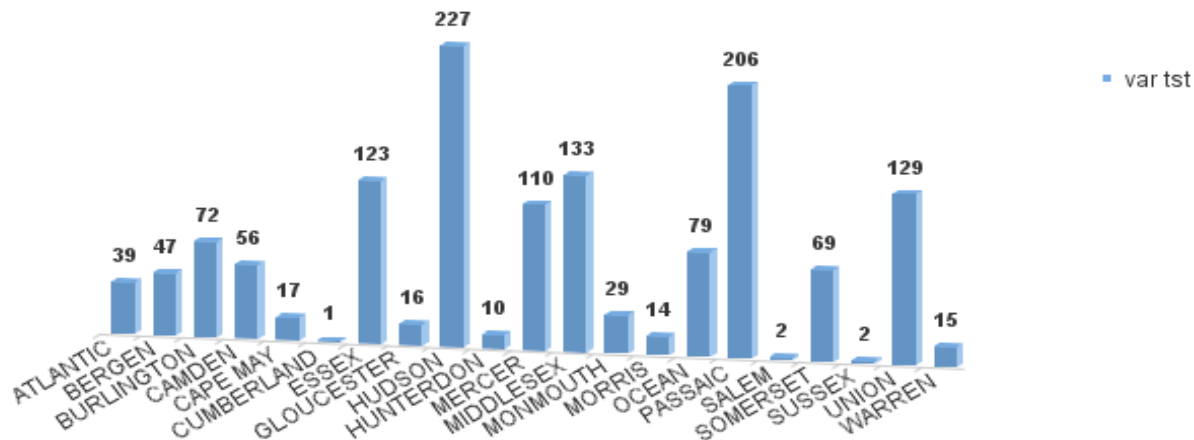
\*=lower caseload % change

\*\* SSI-EA includes pay codes 22 and 24, data is derived from NJ Division of Family Development FAMIS Report #FM430-03A

WFNJ/EA data is derived from NJ MMIS Shared Data Warehouse.

Effective July 2013 this data query source was converted to the SDW.

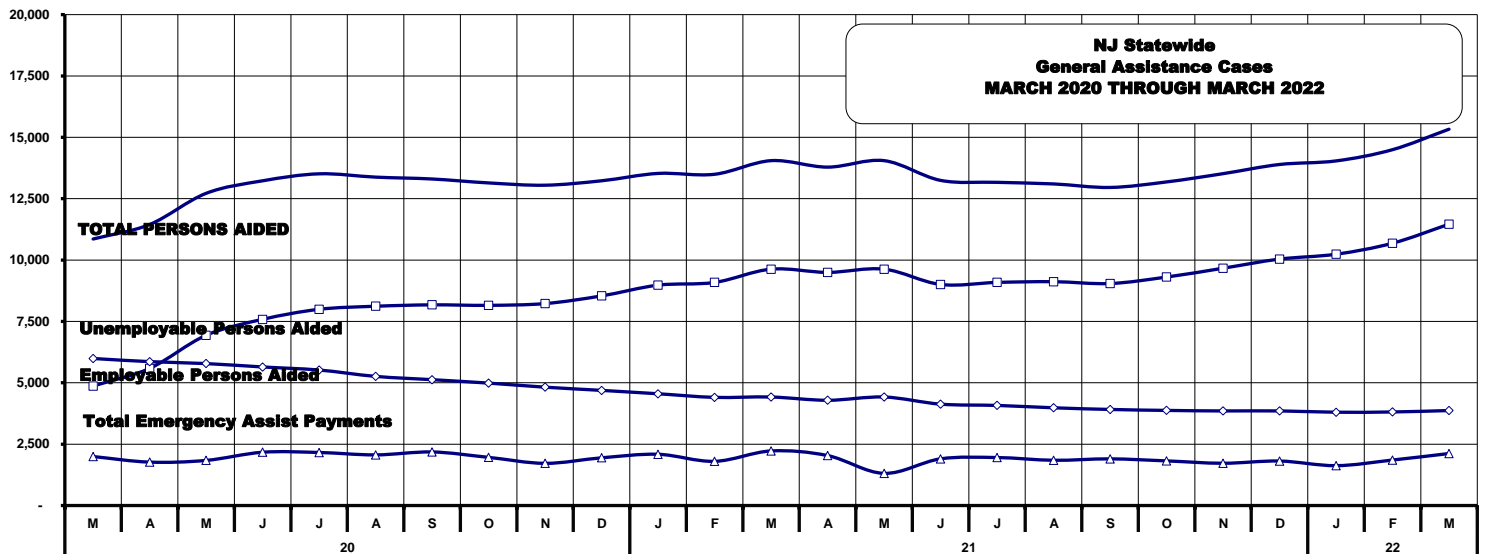
**Number WFNJ Families Receiving EA by County  
MARCH 2022**



**TABLE 10:  
GENERAL  
ASSISTANCE  
PROGRAM**

**NUMBER OF EMPLOYABLE AND UNEMPLOYABLE RECIPIENTS  
AND EMERGENCY ASSISTANCE PAYMENTS - STATEWIDE  
MARCH 2020 THROUGH MARCH 2022**

	Total Cases						Emergency Assistance Cases			
	Employable	% Chng (1 Yr)	Unemployable	% Chng (1 Yr)	Total	% Chng (1 Yr)	Temporary Rental Assistance	Other GA-EA	Total	% Chng (1 Yr)
<b>2020 MAR</b>	4,868	15.5%	5,990	-4.5%	<b>10,858</b>	3.5%	919	1,077	<b>1,996</b>	0.8%
APR	5,587	32.2%	5,862	-6.2%	<b>11,449</b>	9.3%	913	855	<b>1,768</b>	-18.3%
MAY	6,936	66.9%	5,783	-6.9%	<b>12,719</b>	22.7%	929	909	<b>1,838</b>	-35.4%
JUN	7,585	87.4%	5,645	-8.2%	<b>13,230</b>	29.8%	916	1,255	<b>2,171</b>	4.1%
JUL	7,994	97.4%	5,520	-9.2%	<b>13,514</b>	33.4%	905	1,256	<b>2,161</b>	8.4%
AUG	8,119	86.7%	5,261	-16.0%	<b>13,380</b>	26.1%	875	1,188	<b>2,063</b>	-1.5%
SEP	8,176	93.4%	5,127	-17.2%	<b>13,303</b>	27.7%	849	1,333	<b>2,182</b>	1.1%
OCT	8,156	104.9%	4,988	-17.1%	<b>13,144</b>	31.5%	855	1,107	<b>1,962</b>	-11.2%
NOV	8,228	111.0%	4,822	-19.5%	<b>13,050</b>	32.0%	835	884	<b>1,719</b>	-17.2%
DEC	8,540	118.0%	4,691	-21.9%	<b>13,231</b>	33.3%	833	1,111	<b>1,944</b>	-4.7%
<b>2020 AVERAGE</b>	<b>6,875</b>		<b>5,461</b>		<b>12,337</b>		<b>885</b>	<b>1,110</b>	<b>1,995</b>	
<b>2021 JAN</b>	8,978	118.5%	4,553	-23.1%	<b>13,531</b>	34.9%	848	1,240	<b>2,088</b>	-1.8%
FEB	9,089	116.1%	4,407	-25.7%	<b>13,496</b>	33.2%	809	991	<b>1,800</b>	-10.3%
MAR	9,630	97.8%	4,421	-26.2%	<b>14,051</b>	29.4%	819	1,405	<b>2,224</b>	11.4%
APR	9,499	70.0%	4,288	-26.9%	<b>13,787</b>	20.4%	832	1,204	<b>2,036</b>	15.2%
MAY	9,630	38.8%	4,421	-23.6%	<b>14,051</b>	10.5%	819	491	<b>1,310</b>	-28.7%
JUN	9,007	18.7%	4,130	-32.8%	<b>13,247</b>	0.1%	794	1,108	<b>1,902</b>	-12.4%
JUL	9,090	13.7%	4,078	-26.1%	<b>13,168</b>	-2.6%	833	1,121	<b>1,954</b>	-9.6%
AUG	9,120	12.3%	3,982	-24.3%	<b>13,102</b>	-2.1%	753	1,091	<b>1,844</b>	-10.6%
SEP	9,045	10.6%	3,914	-23.7%	<b>12,959</b>	-2.6%	787	1,114	<b>1,901</b>	-12.9%
OCT	9,309	14.1%	3,875	-22.3%	<b>13,184</b>	0.3%	757	1,061	<b>1,818</b>	-7.3%
NOV	9,668	17.5%	3,853	-20.1%	<b>13,521</b>	3.6%	711	1,011	<b>1,722</b>	0.2%
DEC	10,040	17.6%	3,855	-17.8%	<b>13,895</b>	5.0%	742	1,071	<b>1,813</b>	-6.7%
<b>2021 AVERAGE</b>	<b>9,342</b>		<b>4,148</b>		<b>13,499</b>		<b>792</b>	<b>1,076</b>	<b>1,868</b>	
<b>2022 JAN</b>	10,239	14.0%	3,801	-16.5%	<b>14,040</b>	3.8%	677	947	<b>1,624</b>	-22.2%
FEB	10,687	17.6%	3,812	-13.5%	<b>14,499</b>	7.4%	727	1,126	<b>1,853</b>	2.9%
MAR	11,462	19.0%	3,870	-12.5%	<b>15,332</b>	9.1%	719	1,399	<b>2,118</b>	-4.8%
<b>2022 AVERAGE TO DATE</b>	<b>10,796</b>		<b>3,828</b>		<b>14,624</b>		<b>708</b>	<b>1,157</b>	<b>1,865</b>	



**TABLE 11:**  
**GENERAL**  
**ASSISTANCE**  
**PROGRAM**

**EMPLOYABLE AND UNEMPLOYABLE CASES**  
**AND EMERGENCY ASSISTANCE CASES RECEIVING PAYMENTS BY COUNTY**  
**MARCH 2022**

PROGRAM	Total Cases						Emergency Assistance Cases					
	Employable	% Chng (1 Yr)	Unemployable	% Chng (1 Yr)	Total	% Chng (1 Yr)	Temporary Rental Assistance	Other GA-EA	Total	% Chng (1 Yr)		
ATLANTIC	1,247	42.0%	194	-11.0%	1,441	31.5%	Δ	81	31	112	-4.3%	
BERGEN	368	7.3%	170	-20.6%	538	-3.4%		70	28	98	-22.2%	
BURLINGTON	450	19.0%	192	-15.8%	642	5.9%		12	136	148	7.2%	
CAMDEN	1,779	43.0%	501	-4.6%	2,280	28.9%		37	110	147	-25.0%	
CAPE MAY	128	2.4%	42	-23.6%	170	-5.6%		14	46	60	-6.3%	
CUMBERLAND	338	0.9%	102	-7.3%	440	-1.1%		0	4	4	-20.0%	
ESSEX	1,186	17.5%	319	-17.8%	1,505	7.7%		23	196	219	81.0%	Δ
GLOUCESTER	183	4.6%	102	-31.5%	285	-12.0%	*	2	22	24	-35.1%	*
HUDSON	1,847	-5.4%	457	-18.4%	2,304	-8.3%		105	102	207	-16.5%	
HUNTERDON	157	124.3%	43	-27.1%	200	55.0%	Δ	12	32	44	51.7%	Δ
MERCER	457	16.6%	242	-20.4%	699	0.4%		47	52	99	-1.0%	
MIDDLESEX	524	-1.3%	349	18.3%	873	5.7%		75	127	202	-9.4%	
MONMOUTH	285	12.2%	166	-3.5%	451	5.9%		1	102	103	9.6%	
MORRIS	203	48.2%	159	10.4%	362	28.8%		43	29	72	-2.7%	
OCEAN	412	20.5%	200	-16.7%	612	5.2%		47	69	116	-31.0%	
PASSAIC	633	43.5%	298	-16.8%	931	16.5%		41	24	65	-20.7%	
SALEM	156	6.1%	34	-40.4%	190	-6.9%		1	4	5	150.0%	Δ
SOMERSET	201	37.7%	53	-14.5%	254	22.1%		43	47	90	11.1%	
SUSSEX	62	-6.1%	24	-31.4%	86	-14.9%	*	0	12	12	-40.0%	*
UNION	707	40.0%	160	-1.8%	867	29.8%	Δ	49	203	252	5.9%	
WARREN	139	-12.6%	63	-25.9%	202	-17.2%	*	16	23	39	-36.1%	*
NJ TOTAL	11,462	19.0%	3,870	-12.5%	15,332	9.1%		719	1,399	2,118	-4.8%	

Δ= ↑ Caseload %

\* = ↓ Caseload %



**TABLE 12:  
OFFICE OF  
CHILD SUPPORT  
SERVICES**

**OFFICE OF CHILD SUPPORT SERVICES  
QUARTERLY PERFORMANCE REPORT  
STATE SUMMARY  
TITLE IV-D SOURCE COLLECTION REPORT  
Comparison of Quarter-2 (FFY 2021 vs. FFY 2022)**

COLLECTION SOURCE	TOTAL 1/1/2021 - 3/31/2021	% OF TOTAL COLLECTIONS	TOTAL 1/1/2022 - 3/31/2022	% OF TOTAL COLLECTIONS	DOLLAR CHANGE	% CHANGE
FEDERAL TAX	\$11,587,000	3.94%	\$18,598,245	6.65%	\$ 7,011,245	60.51%
STATE TAX	\$433,038	0.15%	\$314,280	0.11%	\$ (118,758)	-27.42%
UIB	\$34,833,880	11.86%	\$7,681,812	2.74%	\$ (27,152,068)	-77.95%
INC WITHHOLD	\$183,805,582	62.57%	\$182,025,127	65.04%	\$ (1,780,455)	-0.97%
FROM OTHER STATES	\$12,170,952	4.14%	\$10,397,345	3.72%	\$ (1,773,607)	-14.57%
ADMIN ENFORCEMENT	\$1,746,080	0.59%	\$5,251,118	0.02%	\$ 3,505,038	200.74%
OTHER	\$49,160,906	16.74%	\$55,594,425	19.86%	\$ 6,433,519	13.09%
<b>TOTAL COLLECTIONS*</b>	<b>\$293,737,438</b>	<b>100%</b>	<b>\$279,862,352</b>	<b>100%</b>	<b>\$ (13,875,086)</b>	<b>-4.72%</b>
<b>DISBURSED COLLECTIONS**</b>	<b>\$260,626,114</b>		<b>\$241,423,424</b>		<b>\$ (19,202,690)</b>	<b>-7.37%</b>

\* Includes collections on both current support and arrears.

\*\* Includes collections on both current support and arrears; also includes money sent to other states.

SOURCE: NJKIDS (Based on Federal Quarterly Report of Collections - OCSE-34A except Disbursed Collections)

Disbursed Collections obtained from Federal Data Report - OCSE-157, which is reported annually to Congress and used in the calculation of incentive dollars earned by each state.

**TABLE 13:**  
**OFFICE OF**  
**CHILD SUPPORT**  
**SERVICES**

**OFFICE OF CHILD SUPPORT SERVICES**  
**STATE SUMMARY**  
**TITLE IV-D PATERNITY ESTABLISHMENT REPORT**  
Comparison of March (FFY 2021 vs. FFY 2022)

County	MARCH 2021			MARCH 2022			Increase or Decrease (-) from FFY 2021 to FFY 2022
	Total Children Born Out of Wedlock*	Number of Paternities Established	Percent of Paternities Established	Total Children Born Out of Wedlock*	Number of Paternities Established	Percent of Paternities Established	
Atlantic	5,856	5,811	99.2%	5,345	5,322	99.6%	0.3%
Bergen	2,938	2,894	98.5%	2,676	2,636	98.5%	0.0%
Burlington	4,518	4,410	97.6%	4,118	4,020	97.6%	0.0%
Camden	14,637	14,235	97.3%	13,514	13,258	98.1%	0.9%
Cape May	1,146	1,126	98.3%	1,025	1,021	99.6%	1.4%
Cumberland	6,170	6,104	98.9%	5,798	5,747	99.1%	0.2%
Essex	22,660	21,577	95.2%	20,652	19,734	95.6%	0.3%
Gloucester	4,024	3,973	98.7%	3,662	3,609	98.6%	-0.2%
Hudson	9,192	8,872	96.5%	8,240	7,970	96.7%	0.2%
Hunterdon	227	227	100.0%	196	194	99.0%	-1.0%
Mercer	6,396	6,212	97.1%	5,711	5,544	97.1%	0.0%
Middlesex	5,857	5,713	97.5%	5,453	5,295	97.1%	-0.4%
Monmouth	4,581	4,442	97.0%	4,029	3,918	97.2%	0.3%
Morris	1,147	1,138	99.2%	1,026	1,015	98.9%	-0.3%
Ocean	4,473	4,360	97.5%	4,137	4,047	97.8%	0.4%
Passaic	9,275	8,949	96.5%	8,438	8,172	96.8%	0.4%
Salem	2,508	2,420	96.5%	2,394	2,304	96.2%	-0.3%
Somerset	1,272	1,233	96.9%	1,148	1,123	97.8%	0.9%
Sussex	464	459	98.9%	418	417	99.8%	0.8%
Union	9,402	8,996	95.7%	8,992	8,615	95.8%	0.1%
Warren	834	834	100.0%	654	657	100.5%	0.5%
<b>NJ TOTALS</b>	<b>117,577</b>	<b>113,985</b>	<b>96.9%</b>	<b>107,626</b>	<b>104,618</b>	<b>97.2%</b>	<b>0.3%</b>

SOURCE: NJKiDS (Based on Federal Performance Measures - OCSE-157)

\* Information on Out of Wedlock Births obtained from NJ Bureau of Vital Statistics

**TABLE 14:**  
**OFFICE OF**  
**CHILD SUPPORT**  
**SERVICES**

**OFFICE OF CHILD SUPPORT SERVICES**  
**STATE SUMMARY**  
**TITLE IV-D REPORT OF CASES WITH ORDERS**  
Comparison of March (FFY 2021 vs. FFY 2022)

County	MARCH 2021			MARCH 2022			Increase or Decrease (-) from FFY 2021 to FFY 2022
	Total Cases	Cases with Orders	% of Cases with Orders	Total Cases	Cases with Orders	% of Cases with Orders	
Atlantic	10,741	9,938	92.5%	10,119	9,374	92.6%	0.1%
Bergen	10,862	10,629	97.9%	10,310	10,057	97.5%	-0.3%
Burlington	11,803	11,171	94.6%	11,244	10,562	93.9%	-0.7%
Camden	26,196	24,815	94.7%	24,947	23,674	94.9%	0.2%
Cape May	2,763	2,583	93.5%	2,622	2,473	94.3%	0.8%
Cumberland	10,966	10,575	96.4%	10,566	10,087	95.5%	-1.0%
Essex	37,063	32,488	87.7%	34,743	30,451	87.6%	0.0%
Gloucester	9,454	9,156	96.8%	9,055	8,623	95.2%	-1.6%
Hudson	18,271	16,426	89.9%	17,210	15,483	90.0%	0.1%
Hunterdon	1,296	1,220	94.1%	1,227	1,153	94.0%	-0.2%
Mercer	12,159	11,204	92.1%	11,405	10,332	90.6%	-1.6%
Middlesex	15,691	14,841	94.6%	15,126	14,140	93.5%	-1.1%
Monmouth	12,219	11,719	95.9%	11,274	10,683	94.8%	-1.2%
Morris	5,271	5,154	97.8%	5,051	4,863	96.3%	-1.5%
Ocean	13,282	12,843	96.7%	12,586	12,113	96.2%	-0.5%
Passaic	17,708	15,555	87.8%	16,589	14,570	87.8%	0.0%
Salem	3,848	3,698	96.1%	3,626	3,458	95.4%	-0.7%
Somerset	4,132	3,928	95.1%	3,915	3,687	94.2%	-0.9%
Sussex	2,364	2,322	98.2%	2,260	2,208	97.7%	-0.5%
Union	16,588	15,880	95.7%	16,070	15,203	94.6%	-1.1%
Warren	2,652	2,549	96.1%	2,298	2,183	95.0%	-1.1%
<b>NJ TOTALS</b>	<b>245,329</b>	<b>228,694</b>	<b>93.2%</b>	<b>232,243</b>	<b>215,377</b>	<b>92.7%</b>	<b>-0.5%</b>

SOURCE: NJKIDS (Based on Federal Performance Measures - OCSE-157)

**TABLE 15:  
OFFICE OF  
CHILD SUPPORT  
SERVICES**

**OFFICE OF CHILD SUPPORT SERVICES  
STATE SUMMARY  
TITLE IV-D COLLECTIONS ON CURRENT SUPPORT  
Comparison of March (FFY 2021 vs. FFY 2022)**

County	MARCH 2021			MARCH 2022			Increase or Decrease (-) from FFY 2021 to FFY 2022
	Total Current Support Due	Total Current Support Distributed	Total Collection Rate	Total Current Support Due	Total Current Support Distributed	Total Collection Rate	
Atlantic	\$3,671,219	\$2,583,105	70.4%	\$3,566,101	\$2,213,470	62.1%	-8.3%
Bergen	\$8,092,618	\$6,319,774	78.1%	\$7,627,772	\$5,686,440	74.5%	-3.5%
Burlington	\$5,438,212	\$3,995,057	73.5%	\$5,194,621	\$3,524,181	67.8%	-5.6%
Camden	\$7,730,668	\$5,000,601	64.7%	\$7,499,256	\$4,340,635	57.9%	-6.8%
Cape May	\$1,024,483	\$737,335	72.0%	\$1,021,351	\$664,752	65.1%	-6.9%
Cumberland	\$2,969,416	\$1,878,168	63.3%	\$2,889,509	\$1,638,519	56.7%	-6.5%
Essex	\$10,440,477	\$6,655,628	63.7%	\$9,911,498	\$5,757,627	58.1%	-5.7%
Gloucester	\$4,044,162	\$2,871,703	71.0%	\$3,887,363	\$2,514,941	64.7%	-6.3%
Hudson	\$7,131,960	\$5,034,783	70.6%	\$6,836,707	\$4,476,178	65.5%	-5.1%
Hunterdon	\$1,146,158	\$948,840	82.8%	\$1,076,048	\$885,474	82.3%	-0.5%
Mercer	\$3,918,203	\$2,644,546	67.5%	\$3,716,597	\$2,333,444	62.8%	-4.7%
Middlesex	\$7,410,166	\$5,405,749	73.0%	\$6,899,069	\$4,654,144	67.5%	-5.5%
Monmouth	\$6,872,314	\$5,223,321	76.0%	\$6,290,806	\$4,580,375	72.8%	-3.2%
Morris	\$4,209,471	\$3,177,979	75.5%	\$4,044,939	\$2,993,197	74.0%	-1.5%
Ocean	\$6,308,653	\$4,742,056	75.2%	\$6,030,286	\$4,239,488	70.3%	-4.9%
Passaic	\$6,356,192	\$4,340,011	68.3%	\$5,998,347	\$3,732,245	62.2%	-6.1%
Salem	\$1,047,589	\$677,633	64.7%	\$1,017,951	\$597,311	58.7%	-6.0%
Somerset	\$2,900,185	\$2,453,204	84.6%	\$2,648,140	\$2,133,606	80.6%	-4.0%
Sussex	\$1,726,197	\$1,370,240	79.4%	\$1,635,130	\$1,232,494	75.4%	-4.0%
Union	\$6,708,943	\$4,870,529	72.6%	\$6,531,290	\$4,437,316	67.9%	-4.7%
Warren	\$1,232,193	\$920,024	74.7%	\$1,130,921	\$831,367	73.5%	-1.2%
<b>NJ TOTALS</b>	<b>\$100,379,479</b>	<b>\$71,850,284</b>	<b>71.6%</b>	<b>\$95,453,703</b>	<b>\$63,467,204</b>	<b>66.5%</b>	<b>-5.1%</b>

SOURCE: NJKiDS (Based on Federal Performance Measures - OCSE-157)

**TABLE 16:**  
**OFFICE OF**  
**CHILD SUPPORT**  
**SERVICES**

**OFFICE OF CHILD SUPPORT SERVICES**  
**STATE SUMMARY**  
**TITLE IV-D CASES ARREARS COLLECTION REPORT**

Comparison of March (FFY 2021 vs. FFY 2022)

County	MARCH 2021			MARCH 2022			Increase or Decrease (-) from FFY 2021 to FFY 2022
	Total Cases with Arrears	Total Amount Collected	Average Arrears Collection per Case	Total Cases with Arrears	Total Amount Collected	Average Arrears Collection per Case	
Atlantic	6,682	\$1,245,877	\$186.45	6,338	\$1,358,258	\$214.30	\$27.85
Bergen	6,943	\$1,662,351	\$239.43	6,648	\$1,534,221	\$230.78	-\$8.65
Burlington	7,473	\$1,537,015	\$205.68	7,109	\$1,561,302	\$219.62	\$13.95
Camden	15,779	\$2,630,437	\$166.70	14,550	\$3,113,574	\$213.99	\$47.29
Cape May	1,796	\$287,402	\$160.02	1,671	\$282,452	\$169.03	\$9.01
Cumberland	6,882	\$1,230,910	\$178.86	6,404	\$1,244,079	\$194.27	\$15.41
Essex	20,607	\$4,023,634	\$195.26	19,036	\$4,388,099	\$230.52	\$35.26
Gloucester	6,322	\$1,271,882	\$201.18	5,752	\$1,367,190	\$237.69	\$36.51
Hudson	11,145	\$2,041,272	\$183.16	10,577	\$2,127,925	\$201.18	\$18.03
Hunterdon	758	\$172,004	\$226.92	720	\$228,686	\$317.62	\$90.70
Mercer	7,679	\$1,534,408	\$199.82	7,016	\$1,564,636	\$223.01	\$23.19
Middlesex	9,889	\$1,909,570	\$193.10	9,354	\$2,153,683	\$230.24	\$37.14
Monmouth	7,757	\$1,666,523	\$214.84	6,930	\$1,766,795	\$254.95	\$40.11
Morris	3,488	\$756,429	\$216.87	3,303	\$910,157	\$275.55	\$58.69
Ocean	8,287	\$1,752,214	\$211.44	7,648	\$1,706,953	\$223.19	\$11.75
Passaic	10,711	\$2,240,148	\$209.14	9,771	\$2,084,363	\$213.32	\$4.18
Salem	2,321	\$395,096	\$170.23	2,161	\$437,295	\$202.36	\$32.13
Somerset	2,596	\$716,742	\$276.09	2,436	\$584,925	\$240.12	-\$35.98
Sussex	1,556	\$317,504	\$204.05	1,456	\$317,339	\$217.95	\$13.90
Union	10,510	\$2,181,432	\$207.56	9,960	\$2,223,566	\$223.25	\$15.69
Warren	1,631	\$342,451	\$209.96	1,448	\$312,992	\$216.15	\$6.19
<b>NJ TOTALS</b>	<b>150,812</b>	<b>\$29,915,301</b>	<b>\$198.36</b>	<b>140,288</b>	<b>\$31,268,490</b>	<b>\$222.89</b>	<b>\$24.53</b>

SOURCE: OCSE-157 Child Support Enforcement Annual Data Report

**Table 17**  
**WFNJ****WORK FIRST NEW JERSEY STATISTICAL SUMMARY****MARCH 2022**

COUNTY	EMPLOYMENT DIRECTED ACTIVITIES			EMPLOYED OPEN (WFNJ RECIPIENT)	SUPPORT SERVICES ON ACTIVE CASE		CLOSED FOR EMPLOYMENT THIS MONTH	POST ASSISTANCE CHILD CARE
	CWEP	ALL OTHER TRAINING	JOB SEARCH		CHILD CARE	TRAINING REL. EXPENSES		
ATLANTIC	0	54	13	36	2	66	9	29
BERGEN	1	1	0	8	14	0	2	3
BURLINGTON	2	34	88	18	6	0	1	9
CAMDEN	45	130	2	41	40	2	4	19
CAPE MAY	0	5	3	2	0	1	0	5
CUMBERLAND	0	34	19	9	1	48	3	2
ESSEX	56	172	1	56	49	55	23	46
GLOUCESTER	0	8	0	9	7	1	1	1
HUDSON	5	253	13	64	86	20	20	15
HUNTERDON	0	0	0	0	2	0	0	0
MERCER	22	171	16	43	97	16	7	25
MIDDLESEX	0	36	32	24	6	0	6	16
MONMOUTH	0	15	5	15	21	3	1	14
MORRIS	0	4	0	1	2	0	2	1
OCEAN	0	119	0	6	16	1	2	11
PASSAIC	0	27	0	19	26	5	8	5
SALEM	0	12	0	4	4	0	0	0
SOMERSET	2	14	31	13	13	3	1	2
SUSSEX	0	0	0	0	0	0	0	0
UNION	0	52	0	6	8	1	2	1
WARREN	0	7	0	5	6	0	0	2
STATE TOTAL	133	1,148	223	379	406	222	92	206

Data is derived from NJ Division of Family Development's FAMIS Reports RM064-01 &amp; RM703-51, AdHoc Reports 5549 &amp; 5598 and SDW Report WR00022WZ\_CC

**DIVISION OF FAMILY DEVELOPMENT CURRENT PROGRAM STATISTICS  
MARCH 2022**

## **ACRONYMS**

**EMERGENCY ASSISTANCE (EA)** - Payments to those eligible for WFNJ/TANF or WFNJ/GA, authorized during the 30 consecutive days immediately following the emergency (defined as a substantial loss of shelter, food, clothing, or household furnishings by fire, flood or other similar disaster) or if eligible individual or family is in an imminent or actual state of homelessness.

**NJ SNAP** - Formerly the Food Stamp Program, now known as NJ SNAP (NJ Supplemental Nutrition Assistance Program) authorized by Congress as a nutritional supplement program to provide low income households with more food of greater variety and better nutrition. Program eligibility is based on household income, resources, and expenses for medical, shelter, and dependent care. CWA staff refers certain recipients to the New Jersey Department of Labor for participation in the Food Stamp Employment and Training Program.

**FAMIS:** Family Assistance Management Information System

**GAAS:** General Assistance Automated System

**NJKIDS:** New Jersey Kids Deserve Support (Child Support Information Management System)

**NJ MMIS SHARED DATA WAREHOUSE:** The Shared Data Warehouse (SDW) is the repository for New Jersey's DFD and Medicaid data. Since 2003, OptumInsight has administered the SDW and provided access to the data through a reporting tool known as Business Objects.

**OMEGA:** Online Management of Economic Goal Achievement

**SSI-EA:** Supplemental Security Income-Emergency Assistance

**WFNJ:** Work First New Jersey - Fully implemented July 1, 1997, this is New Jersey's welfare reform program which responds to the requirements of the Federal Personal Responsibility and Work Opportunity Reconciliation Act (**PRWORA**) of 1996. PRWORA established Temporary Assistance for Needy Families (**TANF**) as the replacement for AFDC cash assistance. WFNJ includes two segments, **WFNJ/TANF** for families with children, and **WFNJ/GA** (General Assistance) for single adults and couples without dependent children. WFNJ emphasizes achieving self-sufficiency and limits lifetime receipt of financial assistance to a total of five years.

**DIVISION OF FAMILY DEVELOPMENT CURRENT PROGRAM STATISTICS  
MARCH 2022**

## **EXPLANATORY NOTES**

The Department of Human Services Division of Family Development provides basic income and an opportunity to achieve self-sufficiency for individuals and families served by the Division's programs. The Division provides leadership, direction and supervision to those public agencies responsible for administering those programs and plans for and develops policies to promote self-sufficiency.

### **WFNJ STATISTICAL SUMMARY (TABLE 17)**

**Employment Directed Activities (EDA)** - From Activities Summary Report (OMEGA report # RM064). Unduplicated count of persons participating in Community Work Experience Program (CWEP), All Other Training, or Job Search.

**Number of Persons Employed This Month, Still Receiving TANF** - Individuals with open "empl" activity on OMEGA. Ad hoc report.

**Participants Receiving Child Care Services** - From Issuance Disbursement Summary (OMEGA report # RM703). Total number of active participants who show receipt of Child Care.

**Number of Persons Closed on FAMIS Due to Employment** - From FAMIS report #5549-RM-2

**Post TANF and Receiving Child Care** - Persons no longer in receipt of TANF but still receiving child care. From Share Data Warehouse Child Care case count based on Child Care payments (SDW report WR00022WZ\_CC ).