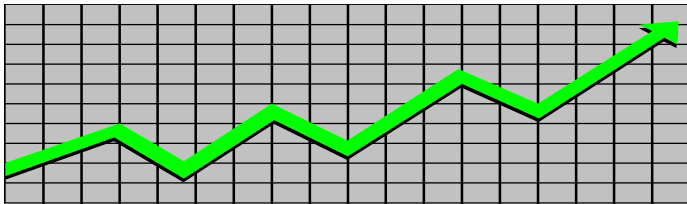


State of New Jersey
Department of Human Services
Division of Family Development

CURRENT PROGRAM STATISTICS



May 2019
Natasha Johnson, Director

**DIVISION OF FAMILY DEVELOPMENT CURRENT PROGRAM STATISTICS
MAY 2019**

TABLE OF CONTENTS

HIGHLIGHTS:

WFNJ/TANF	ii
NJ SNAP	ii
EMERGENCY ASSISTANCE	ii
GENERAL ASSISTANCE	iii
GA Emergency Assistance.....	iii
GA Program.....	iii
CHILD SUPPORT SERVICES	iii
WORK FIRST NEW JERSEY (WFNJ)	iii
STATISTICS- BY STATE & COUNTY	1
Table 1: WFNJ/TANF Families & Persons (NJ Statewide) May 2017 to 2019.....	1
Table 2: WFNJ/TANF Families (by County)- May 2019.....	2
Table 2B: WFNJ/TANF Persons, Adults, & Children (by County)- May 2019.....	3
Table 3: TANF Work Participation Rates Over 12 Month Period (by County)- May 2019.....	4
Table 4: TANF Work Participation Rates Over 12 Month Period (NJ Statewide) May 2019.....	5
Table 5: NJ SNAP Households/Persons (NJ Statewide) May 2017 to 2019.....	6
Table 6: NJ SNAP Recipient Trends (NJ Statewide) May 2017 to 2019.....	7
Table 7: NJ SNAP Households/Persons (by County)- May 2019.....	8
Table 8: Emergency Assistance Program (NJ Statewide) May 2017 to 2019.....	9
Table 9: Emergency Assistance Program (by County)- May 2019.....	10
Table 10: General Assistance Program (NJ Statewide) May 2017 to 2019.....	11
Table 11: General Assistance Program (by County)- May 2019	12
Table 12: Child Support Services Distributions (NJ Statewide) FFY 2019.....	13
Table 13: Child Support Services Paternities Established- May 2019.....	14
Table 14: Child Support Services Cases With Orders- May 2019.....	15
Table 15: Child Support Services Collections On Current Support- May 2019.....	16
Table 16: Child Support Services Cases With Payments On Arrears- May 2019.....	17
Table 17: WFNJ Statistical Summary- May 2019.....	18
ACRONYMS	19
EXPLANATORY NOTES	20
WFNJ Statistical Summary (Table 17).....	20

DIVISION OF FAMILY DEVELOPMENT CURRENT PROGRAM STATISTICS
MAY 2019

Each month the Division of Family Development publishes its program statistics for: WFNJ/TANF, NJ SNAP, Emergency Assistance, General Assistance, and Child Support Services. When possible, information is provided separately for children and adults. Many tables also provide trend data with information broken down by county for readers to consider. This report is compiled and prepared by The Bureau of Research & Reporting.

WFNJ/TANF

- As of the end of May, the TANF caseload had decreased by 2,718 cases, from 13,515 in May 2018 to 10,797 in May 2019, a decrease of 20.1%.
- The counties with caseloads that decreased the most since May 2018 were Cumberland (-26.2%), Atlantic (-31.8%) and Sussex (-38.2%).
- Of the WFNJ/TANF cases, 3,830 or 35.5% were child-only in May 2019.
- The counties with the most child-only cases were Camden (625), Essex (484) and Passaic (404).
- Essex (4,597), Camden (3,511), Hudson (3,338), Passaic (3,035) and Atlantic (1,739) counties had the greatest number of persons receiving TANF in May 2019.

NJ SNAP (formerly FOOD STAMPS)

- In May 2019, there were 347,605 households receiving NJ SNAP benefits. The number of NJ SNAP households decreased by 23,646 or 6.4%, since May 2018.
- There were 687,624 persons receiving NJ SNAP benefits as of May 2019, a decrease of 52,970 or 7.2% since May 2018.
- The counties having the highest caseload decrease since May 2018 are Cape May (-8.0%), Cumberland (-8.0%), Atlantic (-11.0%) and Somerset (-11.4%).

EMERGENCY ASSISTANCE

- There were 1,588 TANF families receiving Emergency Assistance (EA) in May 2019, a decrease of 165 or 9.4% since May 2018.
- In May 2019, EA payments were made for 493 SSI recipients.

**DIVISION OF FAMILY DEVELOPMENT CURRENT PROGRAM STATISTICS
MAY 2019**

- There were 2,845 GA cases with Emergency Assistance payments in May 2019, a decrease of 686 or 31.8% since May 2018.

- The counties that showed the highest percent increase in Emergency Assistance payments were Cumberland (87.5%), Morris (94.1%) and Monmouth (100.0%).

- The counties that showed the highest percent decrease in Emergency Assistance payments were Gloucester (-15.6%), Sussex (-18.2%) and Salem (-70.6%).

GENERAL ASSISTANCE

- The total numbers of cases receiving GA has decreased from 12,192 to 10,368 since May 2018, a decrease of 15.0%.

- There were 4,157 Employable GA and 6,211 Unemployable GA cases in May 2019.

- The counties that showed a percent increase for GA cases were Warren (8.0%), Mercer (10.1%) and Monmouth (25.7%) since May 2018.

- The counties that showed the highest percent decrease for GA cases since May 2018 were Cape May (-21.7%), Gloucester (-25.9%) and Atlantic (-32.1%).

- In May 2019, GA cases showed a 1.0% decrease since April 2019.

CHILD SUPPORT SERVICES (Quarterly Report)

- The total collection for the Child Support Services Program was about \$312 million from January 2019 to March 2019, a decrease of 1.0 percent over the same period for FFY 2018.

- Total distributions decreased 1.3% from March 2018.

WORK FIRST NEW JERSEY (WFNJ)

- During the report month of May 2019, there were 974 families in which at least one member was employed and an additional 155 families whose WFNJ assistance cases were closed due to employment - related earnings.

- The three counties with the greatest number of employed active WFNJ recipients were: Essex (207), Camden (144) and Hudson (101).

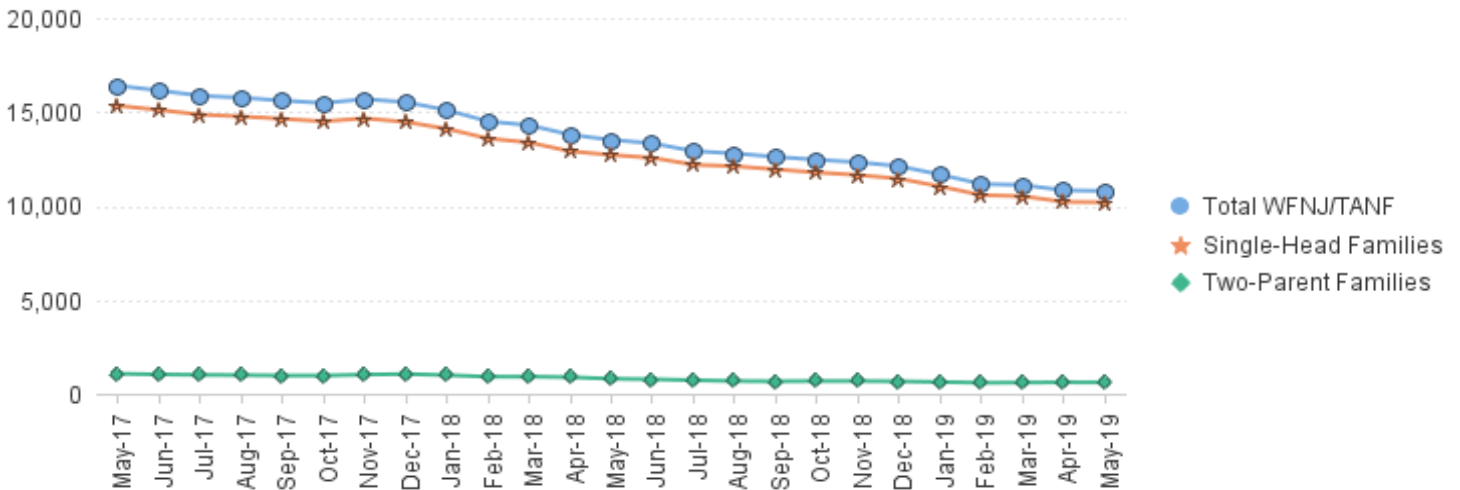
TABLE 1: WFNJ/TANF PROGRAM

STATEWIDE NUMBER OF APPLICATIONS AND TERMINATIONS DURING MAY 2019

NUMBER OF ELIGIBLE FAMILIES & PERSONS RECEIVING WFNJ/TANF FOR MAY 2019

				MAY 2017 THROUGH MAY 2019										
		Cases Added	Cases Closed	Child-Only Cases ‡	Total Single-Head Families	2-Parent Families	Total WFNJ/TANF Families	%CHNG (1 Yr.)	Total Persons	%CHNG (1 Yr.)	Adults	Children		
2017	MAY	1,295	1,835	5,222	15,332	1,069	16,401	-24.8%	41,214	-24.0%	12,248	28,966		
	JUN	1,440	1,750	5,115	15,110	1,034	16,144	-24.3%	40,521	-23.3%	12,063	28,458		
	JUL	1,431	1,780	5,042	14,859	1,007	15,866	-24.2%	39,840	-23.3%	11,831	28,009		
	AUG	1,446	1,617	5,001	14,764	995	15,759	-24.0%	39,673	-22.9%	11,753	27,920		
	SEP	1,525	1,747	4,963	14,635	974	15,609	-23.6%	39,270	-22.4%	11,620	27,650		
	OCT	1,534	1,704	4,876	14,504	972	15,476	-23.2%	38,907	-22.1%	11,572	27,335		
	NOV	1,539	1,581	4,885	14,662	1,022	15,684	-20.1%	39,534	-18.9%	11,821	27,713		
	DEC	1,434	1,686	4,850	14,470	1,054	15,524	-19.2%	39,246	-17.6%	11,728	27,518		
2017 Average		1,444	1,818	5,178	15,395	1,069	16,464		41,327		12,355	28,972		
2018	JAN	1,289	1,706	4,770	14,103	994	15,097	-18.9%	38,222	-17.7%	11,321	26,901		
	FEB	1,226	1,885	4,695	13,589	910	14,499	-19.3%	36,645	-18.2%	10,714	25,931		
	MAR	1,097	1,398	4,670	13,377	918	14,295	-18.7%	35,943	-18.3%	10,543	25,400		
	APR	1,050	1,548	4,610	12,905	883	13,788	-18.6%	34,557	-18.6%	10,061	24,496		
	MAY	1,177	1,506	4,514	12,715	800	13,515	-17.6%	33,791	-18.0%	9,801	23,990		
	JUN	1,287	1,555	4,483	12,558	773	13,331	-17.4%	33,203	-18.1%	9,621	23,582		
	JUL	1,111	1,517	4,389	12,192	723	12,915	-18.6%	32,023	-19.6%	9,249	22,774		
	AUG	1,241	1,440	4,349	12,114	681	12,795	-18.8%	32,848	-17.2%	9,127	23,721		
	SEP	1,341	1,600	4,287	11,944	665	12,609	-19.2%	31,154	-20.7%	8,987	22,167		
	OCT	1,318	1,455	4,222	11,778	683	12,461	-19.5%	31,066	-20.2%	8,922	22,144		
	NOV	1,191	1,381	4,180	11,645	681	12,326	-21.4%	30,734	-22.3%	8,827	21,907		
	DEC	929	1,194	4,128	11,449	664	12,113	-22.0%	30,318	-22.7%	8,649	21,669		
2018 Average		1,188	1,515	4,441	12,531	781	13,312		33,375		9,652	23,724		
2019	JAN	967	1,444	4,093	11,034	628	11,662	-22.8%	29,021	-24.1%	8,197	20,824		
	FEB	791	1,408	3,913	10,577	589	11,166	-23.0%	27,815	-24.1%	7,842	19,973		
	MAR	989	1,340	3,986	10,516	597	11,113	-22.3%	27,603	-23.2%	7,724	19,879		
	APR	998	1,271	3,906	10,216	614	10,830	-21.5%	26,968	-22.0%	7,538	19,430		
	MAY	1,084	1,174	3,830	10,191	606	10,797	-20.1%	26,865	-20.5%	7,573	19,292		
2019 AVG to date		966	1,327	3,946	10,507	607	11,114		27,654		7,775	19,880		

**NJ STATEWIDE
Eligible Families Receiving WFNJ/TANF
MAY 2017 THROUGH MAY 2019**



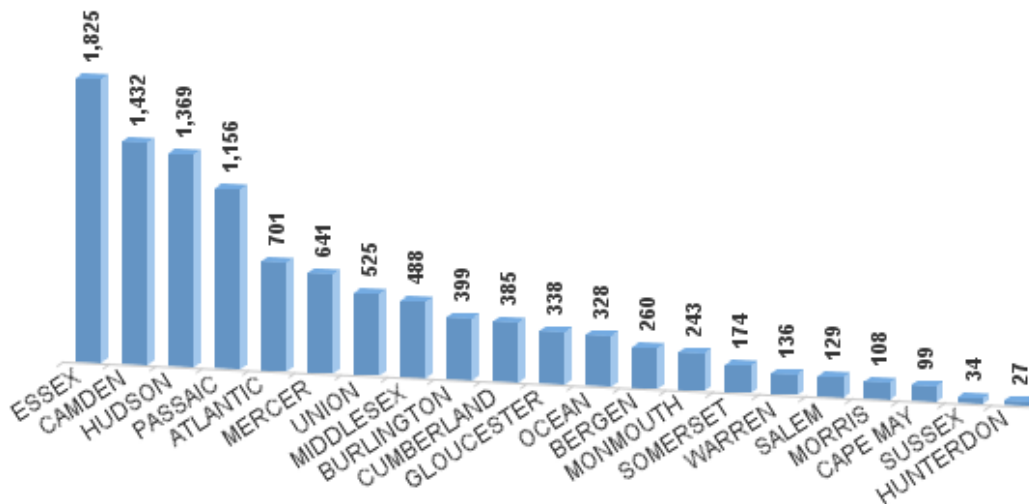
Data is derived from NJ MMIS Shared Data Warehouse Issuance files.
Effective July 2013 this data query source was converted to the SDW

‡ Child-only cases are defined as families in which no eligible adult receives TANF program benefits, yet the family continues to be headed by at least one of the biological parents, or grandparents, or other appropriate adult.

TABLE 2:
WFNJ/TANF PROGRAM NUMBER OF APPLICATIONS AND TERMINATIONS BY COUNTY DURING MAY 2019
NUMBER OF ELIGIBLE FAMILIES RECEIVING WFNJ/TANF FOR MAY 2019

County	Cases Added	Cases Closed **	Child-	Total		Total		%CHNG (3 Mon)	%CHNG (1 Yr.)
			Only Cases ‡	1-Adult Cases	Single-Head Families	2-Parent Families	WFNJ/TANF Families		
ATLANTIC	62	64	302	347	649	52	701	-4.2%	-31.8% *
BERGEN	29	26	71	167	238	22	260	-5.5%	-20.0%
BURLINGTON	41	47	142	243	385	14	399	0.5%	-19.6%
CAMDEN	114	157	625	757	1,382	50	1,432	-4.7%	-20.1%
CAPE MAY	8	12	49	45	94	5	99	-2.9%	-23.3%
CUMBERLAND	37	42	189	168	357	28	385	-6.1%	-26.2% *
ESSEX	219	245	484	1,246	1,730	95	1,825	-2.9%	-22.9%
GLOUCESTER	37	27	129	197	326	12	338	-0.3%	-13.6%
HUDSON	163	148	394	880	1,274	95	1,369	-2.4%	-14.6%
HUNTERDON	3	0	10	12	22	5	27	-12.9%	-6.9% Δ
MERCER	54	81	256	349	605	36	641	-4.5%	-19.3%
MIDDLESEX	65	46	208	257	465	23	488	1.0%	-13.0%
MONMOUTH	17	22	101	135	236	7	243	-0.8%	-8.6%
MORRIS	11	7	30	67	97	11	108	6.9%	-18.2%
OCEAN	47	38	101	209	310	18	328	5.1%	-11.1%
PASSAIC	87	106	404	713	1,117	39	1,156	-3.3%	-24.1%
SALEM	15	16	50	68	118	11	129	0.8%	-20.4%
SOMERSET	24	18	59	106	165	9	174	-0.6%	-7.9% Δ
SUSSEX	3	9	13	17	30	4	34	-24.4%	-38.2% *
UNION	35	52	181	290	471	54	525	-5.9%	-18.1%
WARREN	13	11	32	88	120	16	136	5.4%	-3.5% Δ
NJ Total	1,084	1,174	3,830	6,361	10,191	606	10,797	-2.8%	-20.1%

**Total WFNJ/TANF Families
MAY 2019
By County**



Data is derived from NJ MMIS Shared Data Warehouse Issuance files.
Effective July 2013 this data query source was converted to the SDW

‡ Child-only cases are defined as families in which no eligible adult receives TANF program benefits, yet the family continues to be headed by at least one of the biological parents, or grandparents, or other appropriate adult

** 'Cases closed' include cases that received a benefit in the prior month, but did not receive any TANF benefit for the report month.

Δ=higher caseload % change

*=lower caseload % change

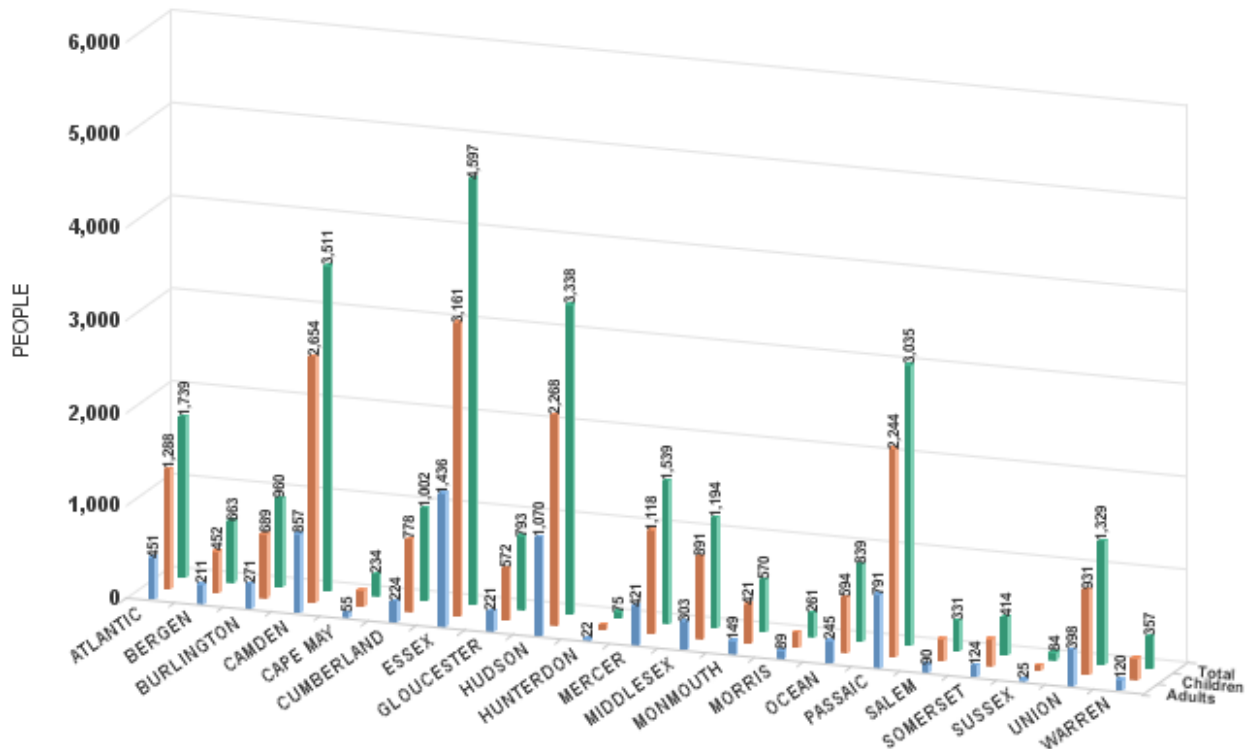
TABLE 2B :
WFNJ/TANF
PROGARM **NUMBER OF PARTICIPATING PERSONS, ADULTS, AND CHILDREN**
BY COUNTY FOR MAY 2019

PERSONS

County	Adults	Children	Child/Adult Ratio	Total Persons	% Chng (1 Yr)	Persons Per Case
ATLANTIC	451	1,288	2.86	1,739	-34.2% *	2.48
BERGEN	211	452	2.14	663	-15.3%	2.55
BURLINGTON	271	689	2.54	960	-21.4%	2.41
CAMDEN	857	2,654	3.10	3,511	-20.7%	2.45
CAPE MAY	55	179	3.25	234	-25.5%	2.36
CUMBERLAND	224	778	3.47	1,002	-29.2% *	2.60
ESSEX	1,436	3,161	2.20	4,597	-20.9%	2.52
GLOUCESTER	221	572	2.59	793	-13.9%	2.35
HUDSON	1,070	2,268	2.12	3,338	-14.6%	2.44
HUNTERDON	22	53	2.41	75	11.9% Δ	2.78
MERCER	421	1,118	2.66	1,539	-20.1%	2.40
MIDDLESEX	303	891	2.94	1,194	-11.8%	2.45
MONMOUTH	149	421	2.83	570	-5.0% Δ	2.35
MORRIS	89	172	1.93	261	-23.2%	2.42
OCEAN	245	594	2.42	839	-11.8%	2.56
PASSAIC	791	2,244	2.84	3,035	-24.3%	2.63
SALEM	90	241	2.68	331	-19.3%	2.57
SOMERSET	124	290	2.34	414	-10.0%	2.38
SUSSEX	25	59	2.36	84	-35.9% *	2.47
UNION	398	931	2.34	1,329	-22.5%	2.53
WARREN	120	237	1.98	357	-5.6% Δ	2.63
NJ Total	7,573	19,292	2.55	26,865	-20.5%	2.49

Δ=higher caseload % change

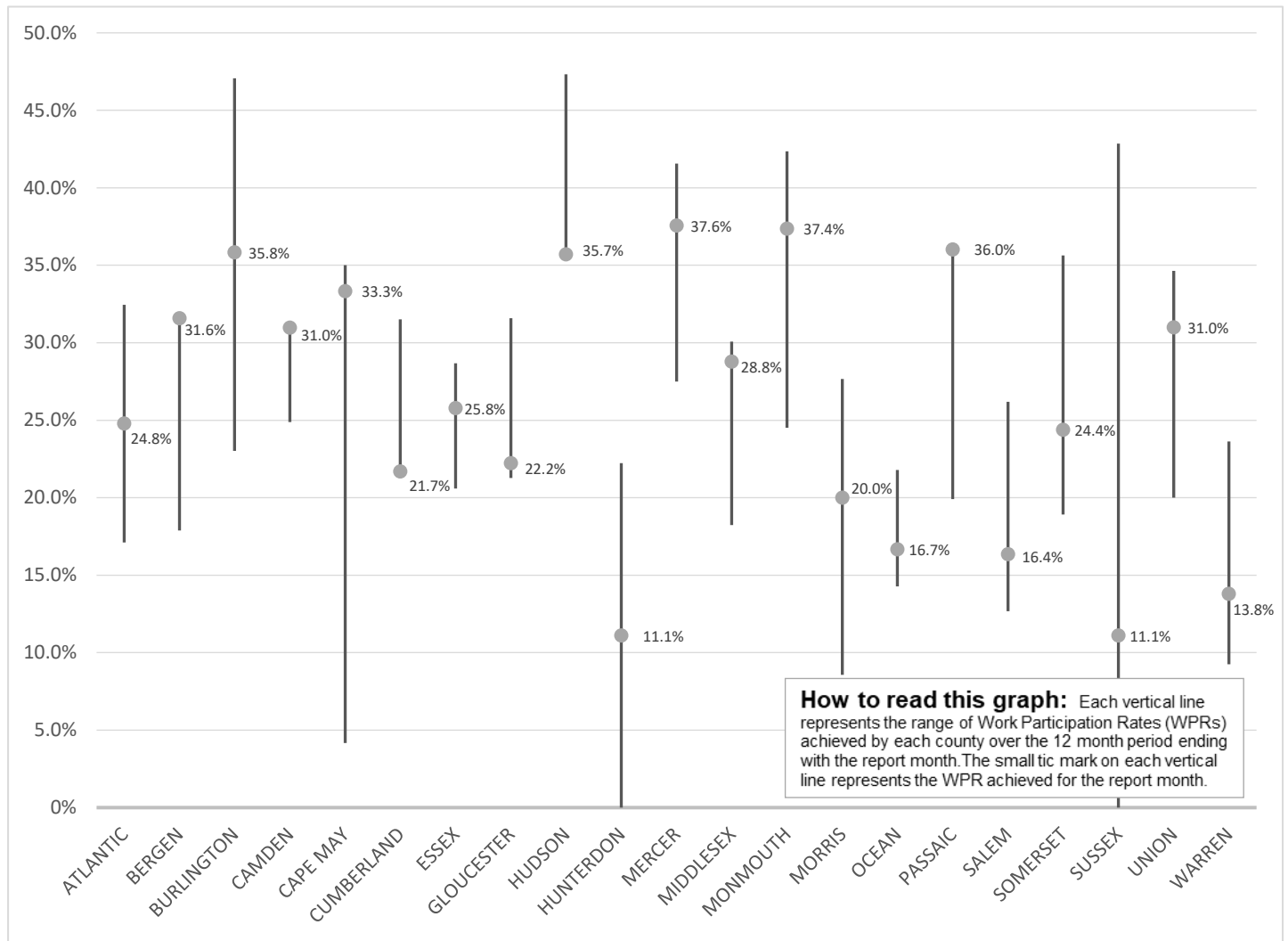
*=lower caseload % change



Data is derived from NJ MMIS Shared Data Warehouse Issuance files.
 Effective July 2013 this data query source was converted to the SDW

TABLE 3 :

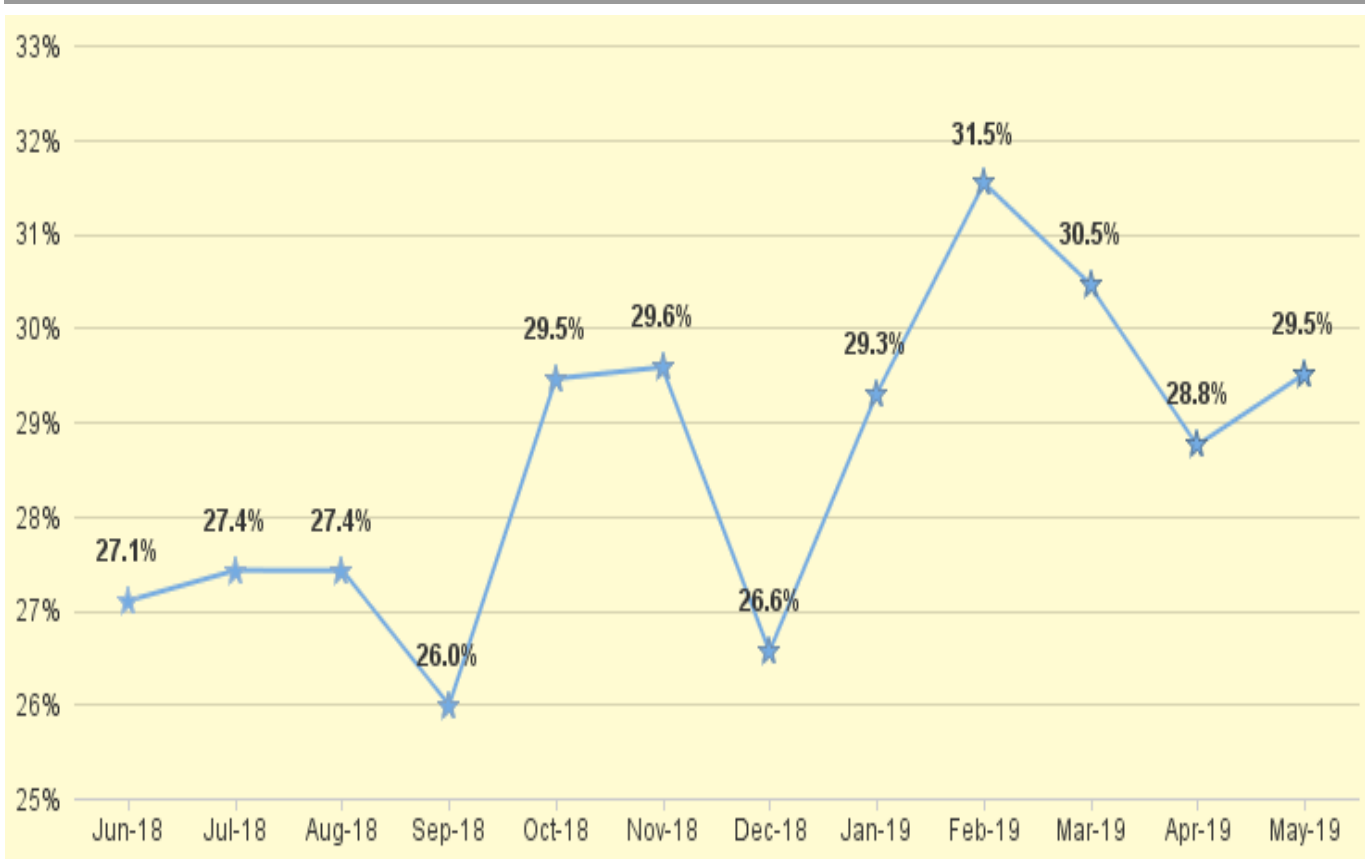
Work Participation Rates Achieved Over 12 Month Period
Ending with MAY 2019



Data is derived from NJ MMIS Shared Data Warehouse Issuance files.
Effective July 2013 this data query source was converted to the SDW

TABLE 4 :

WFNJ/TANF Work Participation Rates
for 12-Month Period Ending with MAY 2019 Statewide



* The Work Participation rate measures the number of countable Temporary Assistance for Needs Families (TANF) participants based on federal formula. The reported rate is considered to be preliminary until officially calculated by the federal government soon after the close of each federal fiscal year.

TABLE 5 :

NJ SNAP
(FOOD STAMPS)NUMBER OF PARTICIPATING HOUSEHOLDS, PERSONS, ADULTS
AND CHILDREN FOR MAY 2019 (STATEWIDE)

MAY 2017 THROUGH MAY 2019

		HOUSEHOLDS				PERSONS				Age 60+	People with a disability
		WFNJ/TANF	Other low income	Total	% CHNG (1 YR)	Adults	Children	TOTAL	% CHNG (1 YR)		
2017	MAY	15,525	381,043	396,568	-8.1%	415,301	375,949	791,250	-7.9%		
	JUN	15,348	379,341	394,689	-8.1%	413,436	373,920	787,356	-8.0%		
	JUL	15,109	376,747	391,856	-8.9%	410,582	371,153	781,735	-8.9%		
	AUG	15,071	375,901	390,972	-8.0%	409,795	370,000	779,795	-8.1%	132,403	221,507
	SEP	15,032	375,469	390,501	-7.8%	409,052	369,928	778,980	-7.8%	132,065	221,449
	OCT	14,762	370,462	385,224	-8.3%	403,103	363,198	766,301	-8.5%	130,948	219,170
	NOV	14,783	370,436	385,219	-8.0%	403,158	364,706	767,864	-8.1%	130,391	219,210
	DEC	14,648	371,916	386,564	-7.4%	404,418	367,199	771,617	-7.4%	130,292	222,460
2017	Average	15,509	379,521	395,030		413,501	374,531	788,032		131,220	220,759
2018	JAN	13,996	366,670	380,666	-6.9%	398,026	360,502	758,528	-7.1%	128,879	218,735
	FEB	13,566	364,750	378,316	-6.7%	395,314	357,938	753,252	-7.0%	128,094	217,046
	MAR	13,362	366,128	379,490	-5.8%	396,620	360,051	756,671	-5.9%	127,792	216,741
	APR	12,787	360,385	373,172	-7.0%	390,319	353,157	743,476	-7.2%	126,571	214,558
	MAY	12,646	358,605	371,251	-6.4%	388,870	351,724	740,594	-6.4%	125,945	213,705
	JUN	12,636	360,531	373,167	-5.5%	391,455	353,883	745,338	-5.3%	130,916	213,689
	JUL	12,142	355,160	367,302	-6.3%	385,535	346,628	732,163	-6.3%	129,767	211,396
	AUG	12,162	354,922	367,084	-6.1%	385,645	345,658	731,303	-6.2%	129,230	210,919
	SEP	11,978	355,023	367,001	-6.0%	386,047	344,801	730,848	-6.2%	128,684	210,278
	OCT	11,828	351,057	362,885	-5.8%	381,993	339,837	721,830	-5.8%	127,534	208,715
	NOV	11,524	349,288	360,812	-6.3%	380,136	336,835	716,971	-6.6%	126,941	208,324
	DEC	11,056	347,269	358,325	-7.3%	377,967	334,264	712,231	-7.7%	126,299	210,239
2018	Average	12,474	357,482	369,956		388,161	348,773	736,934		128,054	212,862
2019	JAN	11,080	347,492	358,572	-5.8%	378,698	333,780	712,478	-6.1%	125,563	208,860
	FEB	9,524	325,936	335,460	-11.3%	354,132	303,701	657,833	-12.7%	121,511	199,781
	MAR	10,469	341,314	351,783	-7.3%	372,223	325,898	698,121	-7.7%	123,658	205,933
	APR	10,136	336,819	346,955	-7.0%	367,367	319,361	686,728	-7.6%	122,716	204,624
	MAY	10,284	337,321	347,605	-6.4%	368,192	319,432	687,624	-7.2%	122,594	203,974
2019	AVG to date	10,299	337,776	348,075		368,122	320,434	688,557		123,208	204,634

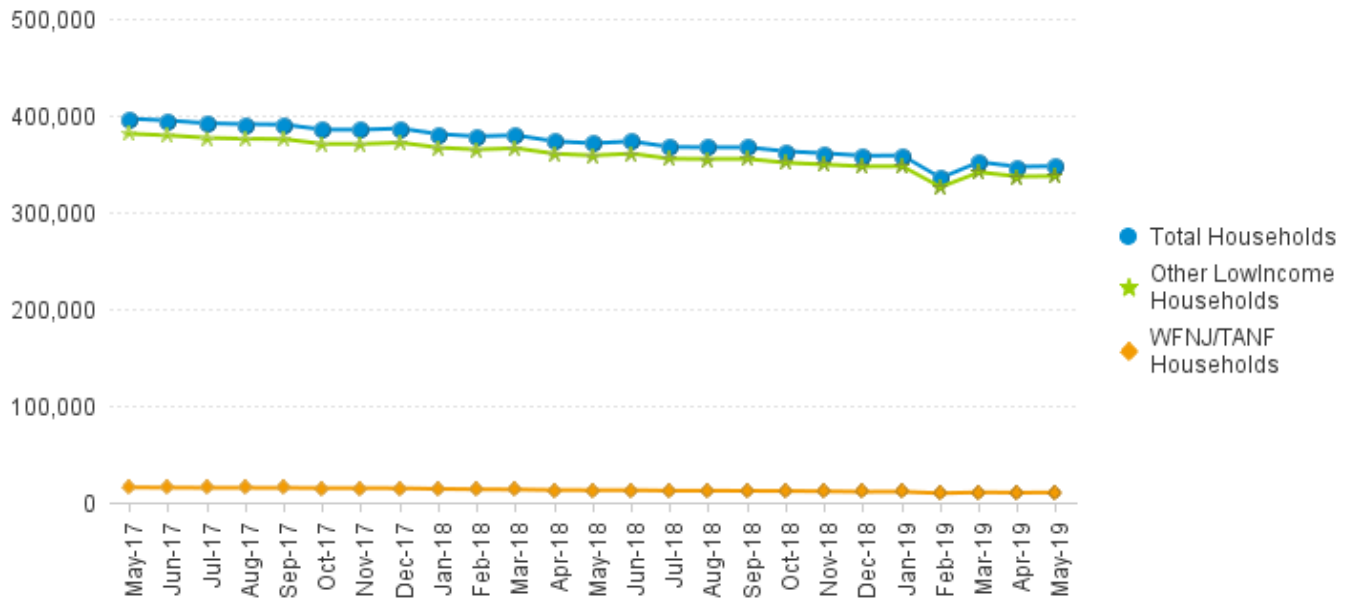
This Table is based on those Households & Persons that received SNAP issuances (benefits) during the month

Data is derived from NJ MMIS Shared Data Warehouse.
Effective July 2013 this data query source was converted to the SDW.

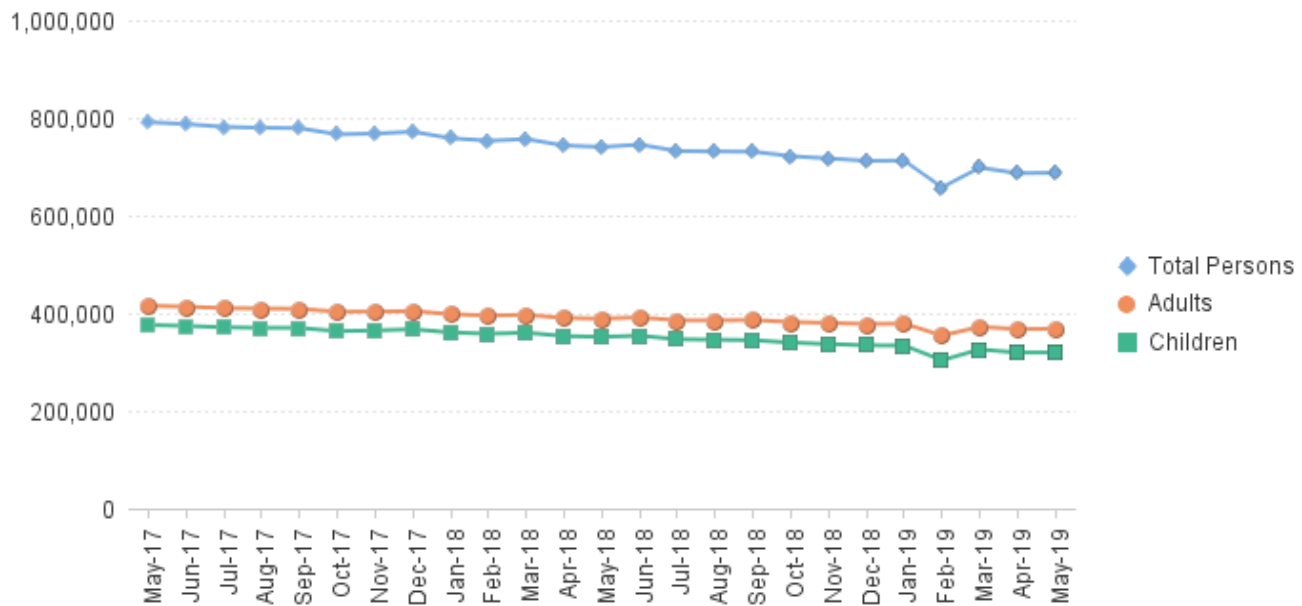
* Age 60+ and People with a disability columns are independent subsets of total persons. An individual might appear in both columns

**TABLE 6: NJ SNAP (FOOD STAMPS)
TRENDS FOR PARTICIPATING HOUSEHOLDS & PERSONS
MAY 2017 THROUGH MAY 2019 (STATEWIDE)**

Statewide NJ SNAP Households: MAY 2017 Through MAY 2019



Statewide NJ SNAP Persons: MAY 2017 Through MAY 2019



Data is derived from NJ MMIS Shared Data Warehouse Issuance files.

Effective July 2013 this data query source was converted to the SDW

TABLE 7 :

NJ SNAP

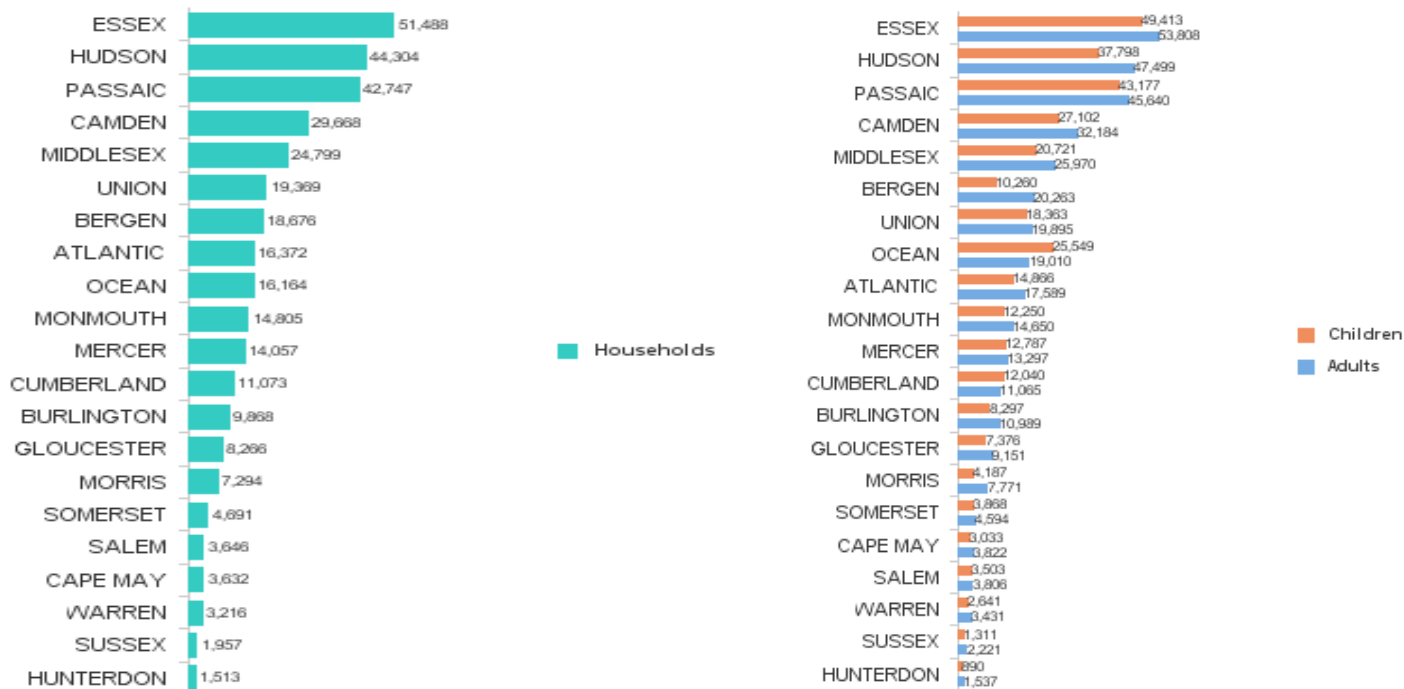
NUMBER OF PARTICIPATING HOUSEHOLDS, PERSONS, ADULTS AND CHILDREN BY COUNTY FOR MAY 2019

County	HOUSEHOLDS				PERSONS				Age 60+	People with a disability
	WFNJ/TANF	Other low income	TOTAL	% Chng (1 Yr)	Adults	Children	TOTAL	% Chng (1 Yr)		
ATLANTIC	618	15,754	16,372	-11.0% *	17,589	14,866	32,455	-11.9% *	4,783	9,205
BERGEN	264	18,412	18,676	-6.2%	20,263	10,260	30,523	-8.4%	11,623	14,361
BURLINGTON	370	9,498	9,868	-4.9%	10,989	8,297	19,286	-5.5%	2,828	6,268
CAMDEN	1,281	28,387	29,668	-3.8% Δ	32,184	27,102	59,286	-5.2%	7,755	17,163
CAPE MAY	84	3,548	3,632	-8.0%	3,822	3,033	6,855	-8.1%	1,056	2,230
CUMBERLAND	353	10,720	11,073	-8.0%	11,065	12,040	23,105	-8.5%	2,744	6,597
ESSEX	1,888	49,600	51,488	-5.5%	53,808	49,413	103,221	-6.4%	14,850	26,679
GLOUCESTER	282	7,984	8,266	-3.9%	9,151	7,376	16,527	-4.3% Δ	2,209	5,421
HUDSON	1,334	42,970	44,304	-7.5%	47,499	37,798	85,297	-8.1%	17,903	25,563
HUNTERDON	27	1,486	1,513	-1.7% Δ	1,537	890	2,427	-1.9% Δ	547	999
MERCER	586	13,471	14,057	-6.5%	13,297	12,787	26,084	-7.0%	3,935	8,881
MIDDLESEX	449	24,350	24,799	-6.9%	25,970	20,721	46,691	-8.6% *	11,996	16,136
MONMOUTH	222	14,583	14,805	-7.2%	14,650	12,250	26,900	-8.3%	5,456	9,044
MORRIS	107	7,187	7,294	-5.4%	7,771	4,187	11,958	-6.6%	3,976	5,129
OCEAN	320	15,844	16,164	-7.2%	19,010	25,549	44,559	-7.1%	5,209	9,687
PASSAIC	1,161	41,586	42,747	-5.4%	45,640	43,177	88,817	-5.7%	13,925	20,379
SALEM	114	3,532	3,646	-2.9% Δ	3,806	3,503	7,309	-3.9% Δ	882	2,259
SOMERSET	154	4,537	4,691	-11.4% *	4,594	3,868	8,462	-12.2% *	1,972	3,085
SUSSEX	38	1,919	1,957	-5.8%	2,221	1,311	3,532	-6.4%	732	1,514
UNION	496	18,873	19,369	-6.9%	19,895	18,363	38,258	-6.7%	7,221	11,222
WARREN	136	3,080	3,216	-4.7%	3,431	2,641	6,072	-7.4%	992	2,152
NJ TOTAL	10,284	337,321	347,605	-6.4%	368,192	319,432	687,624	-7.2%	122,594	203,974

Δ=higher caseload % change

*=lower caseload % change

Total NJ SNAP Recipients MAY 2019 by County



Data is derived from NJ MMIS Shared Data Warehouse.

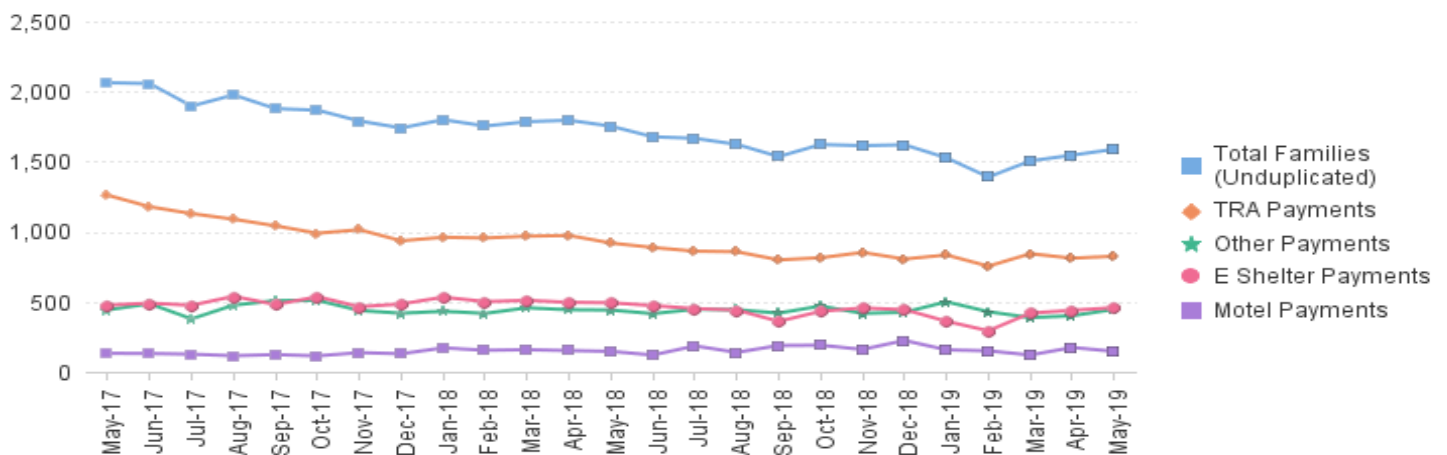
Effective July 2013 this data query source was converted to the SDW.

* Age 60+ and People with a disability columns are independent subsets of total persons. An individual might appear in both columns

TABLE 8 : EMERGENCY ASSISTANCE (STATEWIDE) TOTAL NUMBER OF ELIGIBLE FAMILIES RECEIVING EMERGENCY ASSISTANCE PAYMENTS MAY 2017 THROUGH MAY 2019 - STATEWIDE

		Total WFNJ/EA Families (Undupl)		Temp Rent Asst. Payments (Undupl)		Motel Housing Payments (Undupl)		Shelter/Transitional Housing Payments (Undupl)		Other WFNJ/EA Payments (Undupl)	
			% CHNG (1 YR)		% CHNG (1 YR)		% CHNG (1 YR)		% CHNG (1 YR)		% CHNG (1 YR)
2017	MAY	2,063	-31.5%	1,260	-39.5%	132	-23.7%	476	-2.9%	442	-23.9%
	JUN	2,057	-31.2%	1,178	-41.7%	131	-23.8%	490	-5.6%	486	-17.8%
	JUL	1,896	-31.5%	1,129	-38.8%	126	-8.0%	475	-1.7%	378	-36.8%
	AUG	1,976	-30.3%	1,089	-40.9%	115	-24.3%	539	10.0%	476	-28.6%
	SEP	1,878	-31.7%	1,042	-40.9%	123	-48.1%	480	0.8%	508	-14.0%
	OCT	1,867	-32.7%	989	-39.5%	114	-63.5%	536	-0.6%	510	-14.6%
	NOV	1,790	-30.3%	1,014	-36.7%	137	-19.9%	465	-6.4%	438	-26.0%
	DEC	1,740	-29.2%	935	-39.6%	129	-21.8%	484	-1.4%	418	-28.8%
2017 Average		2,021		1,185		134		491		468	
2018	JAN	1,799	-24.0%	960	-35.0%	171	-6.6%	533	9.2%	432	-15.3%
	FEB	1,754	-20.7%	955	-30.6%	154	27.3%	501	0.8%	417	-11.8%
	MAR	1,785	-23.4%	968	-31.1%	158	-4.2%	510	-1.4%	457	-16.3%
	APR	1,795	-13.6%	973	-26.4%	152	12.6%	496	11.2%	443	1.8%
	MAY	1,753	-15.0%	919	-27.1%	146	10.6%	493	3.6%	441	-0.2%
	JUN	1,677	-18.5%	887	-24.7%	120	-8.4%	473	-3.5%	415	-14.6%
	JUL	1,666	-12.1%	861	-23.7%	185	46.8%	451	-5.1%	447	18.3%
	AUG	1,623	-17.9%	857	-21.3%	139	20.9%	441	-18.2%	443	-6.9%
	SEP	1,536	-18.2%	799	-23.3%	188	52.8%	360	-25.0%	419	-17.5%
	OCT	1,622	-13.1%	814	-17.7%	190	66.7%	432	-19.4%	470	-7.8%
	NOV	1,614	-9.8%	852	-16.0%	160	16.8%	456	-1.9%	417	-4.8%
	DEC	1,620	-6.9%	805	-13.9%	224	73.6%	444	-8.3%	425	1.7%
2018 Average		1,687		888		166		466		436	
2019	JAN	1,527	-15.1%	834	-13.1%	157	-8.2%	361	-32.3%	500	15.7%
	FEB	1,390	-20.8%	754	-21.0%	150	-2.6%	293	-41.5%	429	2.9%
	MAR	1,505	-15.7%	843	-12.9%	120	-24.1%	419	-17.8%	387	-15.3%
	APR	1,546	-13.9%	811	-16.6%	174	14.5%	439	-11.5%	400	-9.7%
	MAY	1,588	-9.4%	825	-10.2%	146	0.0%	458	-7.1%	446	1.1%
2019 AVG to date		1,511		813		149		394		432	

NJ STATEWIDE Families Receiving Emergency Assistance MAY 2017 THROUGH MAY 2019



WFNJ/EA data is derived from NJ MMIS Shared Data Warehouse. Effective July 2013 this data query source was converted to the SDW.

* Effective Feb '11 Transitional Housing Payments were removed from 'Other EA Payments' and added to 'Shelter Payments'.

TABLE 9 : EMERGENCY ASSISTANCE (BY COUNTY) TOTAL NUMBER OF ELIGIBLE FAMILIES RECEIVING EMERGENCY ASSISTANCE PAYMENTS BY COUNTY (UNDUPLICATED CASES) FOR MAY 2019

County	TOTAL	%	Temp	Motel	Shelter/Transitional	Other	SSI
	WFNJ/EA Families (Undupl)	CHNG From MAY 18	Rent Asst. Payments (Undupl)	Housing Payments (Undupl)	Housing Payments (Undupl)	WFNJ/EA Payments (Undupl)	Reipients Receiving EA **
ATLANTIC	79	-20.2%	61	4	1	30	80
BERGEN	49	-14.0%	20	0	21	12	13
BURLINGTON	87	-19.4%	19	4	65	16	9
CAMDEN	66	-7.0%	25	7	26	18	17
CAPE MAY	10	-44.4% *	3	8	0	0	12
CUMBERLAND	7	133.3% Δ	0	0	6	1	1
ESSEX	259	-25.4%	73	0	171	43	32
GLOUCESTER	18	-33.3% *	6	0	1	13	10
HUDSON	210	6.6%	145	3	44	85	38
HUNTERDON	3	200.0% Δ	2	1	0	0	2
MERCER	75	-29.2% *	47	3	16	22	54
MIDDLESEX	120	18.8%	34	52	12	50	23
MONMOUTH	36	80.0%	2	8	27	3	11
MORRIS	29	20.8%	12	14	1	11	22
OCEAN	71	2.9%	56	12	2	19	8
PASSAIC	286	-13.6%	224	1	28	71	51
SALEM	8	0%	1	0	1	7	7
SOMERSET	64	16.4%	37	7	17	20	46
SUSSEX	3	0%	0	0	2	1	10
UNION	90	-9.1%	47	18	17	21	46
WARREN	18	100.0% Δ	11	4	0	3	1
NJ Total	1,588	-9.4%	825	146	458	446	493

Δ=higher caseload % change

*=lower caseload % change

** SSI-EA includes pay codes 22 and 24, data is derived from NJ Division of Family Development FAMIS Report #FM430-03A
 WFNJ/EA data is derived from NJ MMIS Shared Data Warehouse.
 Effective July 2013 this data query source was converted to the SDW.

Number WFNJ Families Receiving EA by County MAY 2019

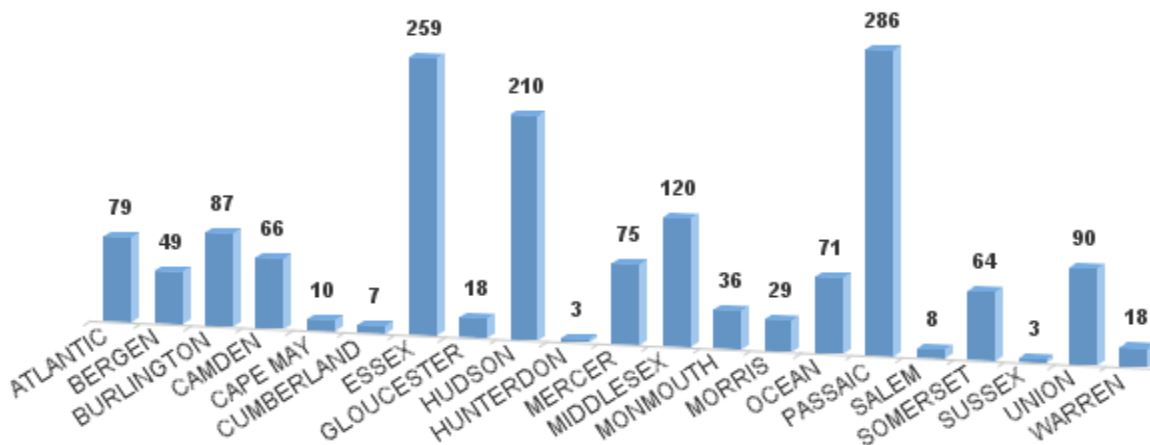
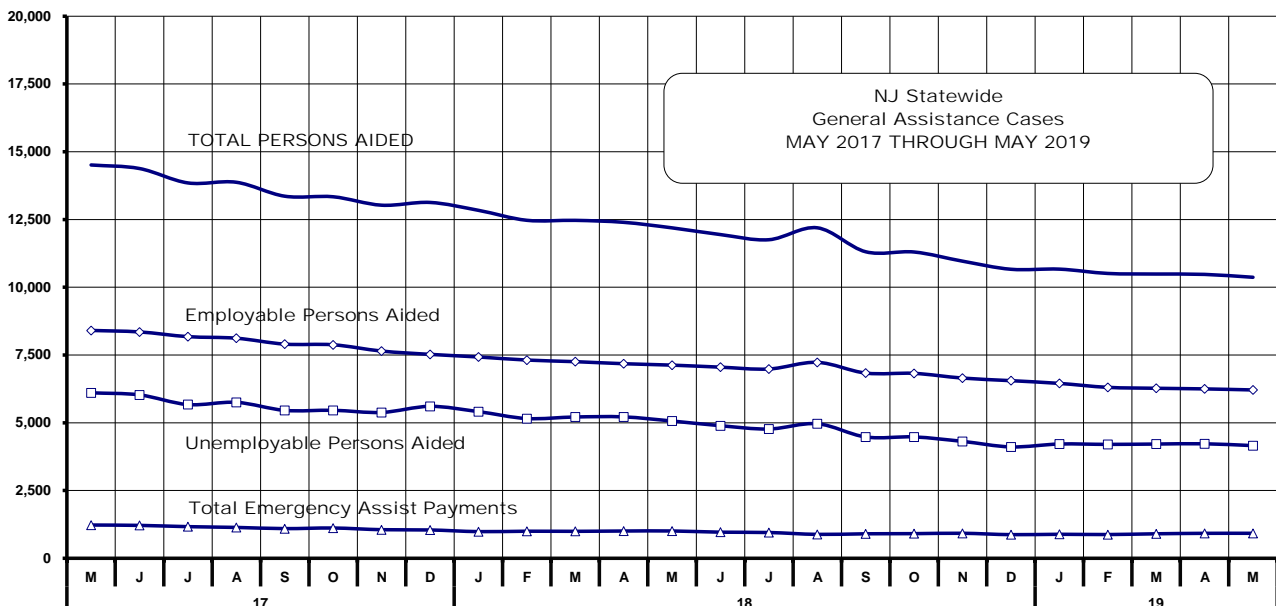


Table 10
GENERAL
ASSISTANCE
PROGRAM

**NUMBER OF EMPLOYABLE AND UNEMPLOYABLE RECIPIENTS
AND EMERGENCY ASSISTANCE PAYMENTS FOR MAY 2019 - STATEWIDE**

MAY 2017 THROUGH MAY 2019

	Total Cases						Emergency Assistance Cases			
	Employable	% Chng (1 Yr)	Unemployable	% Chng (1 Yr)	Total	% Chng (1 Yr)	Temporary Rental Assistance	Other GA-EA	Total	% Chng (1 Yr)
2017 MAY	6,105	-34.0%	8,407	-12.4%	14,512	-23.0%	1,227	1,180	2,407	-11.6%
JUN	6,029	-31.6%	8,352	-13.1%	14,381	-21.9%	1,214	1,192	2,406	-17.6%
JUL	5,672	-30.2%	8,178	-12.3%	13,850	-20.6%	1,167	1,011	2,178	-19.2%
AUG	5,754	-27.9%	8,120	-13.2%	13,874	-20.0%	1,139	1,196	2,335	-18.4%
SEP	5,458	-27.7%	7,902	-13.7%	13,360	-20.0%	1,095	1,039	2,134	-18.9%
OCT	5,461	-26.5%	7,878	-14.1%	13,339	-19.6%	1,117	1,148	2,265	-19.2%
NOV	5,382	-24.0%	7,646	-15.9%	13,028	-19.5%	1,055	936	1,991	-26.2%
DEC	5,606	-17.8%	7,524	-15.8%	13,130	-16.7%	1,045	1,059	2,104	-17.5%
2017 AVERAGE	5,932		8,219		14,151		1,178	1,118	2,296	
2018 JAN	5,411	-17.4%	7,428	-15.3%	12,839	-16.2%	984	1,113	2,097	-16.6%
FEB	5,157	-19.8%	7,314	-15.6%	12,471	-17.4%	999	1,069	2,068	-12.9%
MAR	5,214	-19.2%	7,255	-16.6%	12,469	-17.7%	995	1,055	2,050	-15.9%
APR	5,217	-16.8%	7,179	-15.4%	12,396	-16.0%	1,006	1,210	2,216	-8.1%
MAY	5,065	-17.0%	7,127	-15.2%	12,192	-16.0%	1,008	1,151	2,159	-10.3%
JUN	4,892	-18.9%	7,052	-15.6%	11,944	-16.9%	963	1,053	2,016	-16.2%
JUL	4,770	-15.9%	6,984	-14.6%	11,754	-15.1%	951	1,066	2,017	-7.4%
AUG	4,964	-13.7%	7,230	-11.0%	12,194	-12.1%	882	1,122	2,004	-14.2%
SEP	4,476	-18.0%	6,834	-13.5%	11,310	-15.3%	904	1,054	1,958	-8.2%
OCT	4,478	-18.0%	6,823	-13.4%	11,301	-15.3%	909	1,079	1,988	-12.2%
NOV	4,314	-19.8%	6,649	-13.0%	10,963	-15.9%	923	998	1,921	-3.5%
DEC	4,110	-26.7%	6,554	-12.9%	10,664	-18.8%	872	1,007	1,879	-10.7%
2018 AVERAGE	4,839		7,036		11,875		950	1,081	2,031	
2019 JAN	4,216	-22.1%	6,453	-13.1%	10,669	-16.9%	886	1,018	1,904	-9.2%
FEB	4,203	-18.5%	6,307	-13.8%	10,510	-15.7%	876	1,023	1,899	-8.2%
MAR	4,215	-19.2%	6,273	-13.5%	10,488	-15.9%	904	1,077	1,981	-3.4%
APR	4,225	-19.0%	6,250	-12.9%	10,475	-15.5%	921	1,244	2,165	-2.3%
MAY	4,157	-17.9%	6,211	-12.9%	10,368	-15.0%	922	1,923	2,845	31.8%
2019 AVG to date	4,203		6,299		10,502		902	1,257	2,159	



Source: NJ Division of Family Development, GA Fiscal Unit

TABLE 11

GENERAL
ASSISTANCE
PROGRAM**EMPLOYABLE AND UNEMPLOYABLE CASES
AND EMERGENCY ASSISTANCE CASES RECEIVING PAYMENTS BY COUNTY**

MAY 2019

County	Total Cases				Emergency Assistance Cases					
	Employable	% Chng (From May 18)	Unemployable	% Chng (From May 18)	Total	% Chng (From May 18)	Temporary Rental Assist.	Other GA-EA	Total	% Chng (From May 18)
ATLANTIC	376	-39.8%	284	-18.2%	660	-32.1% *	92	110	202	16.1%
BERGEN	198	-23.6%	449	-13.5%	647	-16.8%	109	117	226	43.0%
BURLINGTON	188	-27.4%	361	-14.9%	549	-19.6%	30	158	188	-1.6%
CAMDEN	435	-26.4%	663	-16.8%	1,098	-20.9%	46	147	193	17.7%
CAPE MAY	62	-17.3%	75	-25.0%	137	-21.7% *	22	55	77	2.7%
CUMBERLAND	179	-9.1%	227	-24.3%	406	-18.3%	2	13	15	87.5% Δ
ESSEX	773	-2.4%	458	-6.5%	1,231	-4.0%	54	162	216	11.9%
GLOUCESTER	109	-33.1%	205	-21.5%	314	-25.9% *	12	26	38	-15.6% *
HUDSON	375	-13.4%	729	-25.0%	1,104	-21.4%	69	113	182	62.5%
HUNTERDON	74	48.0%	57	-17.4%	131	10.1% Δ	15	26	41	13.9%
MERCER	163	-25.9%	427	-14.9%	590	-18.3%	47	103	150	59.6%
MIDDLESEX	193	-16.8%	410	4.1%	603	-3.7%	81	220	301	47.5%
MONMOUTH	98	55.6%	200	14.9%	298	25.7% Δ	1	35	36	100.0% Δ
MORRIS	139	-10.3%	202	-14.4%	341	-12.8%	77	119	196	94.1% Δ
OCEAN	176	-12.4%	303	-3.8%	479	-7.2%	60	121	181	29.3%
PASSAIC	138	-30.7%	561	-8.2%	699	-13.7%	88	113	201	62.1%
SALEM	40	11.1%	66	-24.1%	106	-13.8%	1	4	5	-70.6% *
SOMERSET	91	9.6%	72	4.3%	163	7.2%	28	52	80	50.9%
SUSSEX	36	-33.3%	50	13.6%	86	-12.2%	1	26	27	-18.2% *
UNION	207	-27.9%	304	-1.3%	511	-14.1%	71	173	244	33.3%
WARREN	107	17.6%	108	0.0%	215	8.0% Δ	16	30	46	27.8%
NJ TOTAL	4,157	-17.9%	6,211	-12.9%	10,368	-15.0%	922	1,923	2,845	31.8%

Δ = ↑ Caseload %

* = ↓ Caseload %

Source: NJ Division of Family Development, GA Fiscal Unit

TABLE 12
OFFICE OF CHILD
SUPPORT
SERVICES

OFFICE OF CHILD SUPPORT SERVICES

Quarterly Performance Report

State Summary

TITLE IV-D SOURCE COLLECTION REPORT

Comparison of Quarter-2 (FFY 18 vs. FFY 19)

COLLECTION SOURCE	TOTAL 1/1/2018 - 3/31/2018	% OF TOTAL COLLECTIONS	TOTAL 1/1/2019 - 3/31/2019	% OF TOTAL COLLECTIONS	DOLLAR CHANGE	% CHANGE
FEDERAL TAX	\$ 19,333,980	6.14%	\$ 19,342,898	6.20%	\$ 8,918	0.05%
STATE TAX	\$ 267,391	0.08%	\$ 270,655	0.09%	\$ 3,264	1.22%
UIB	\$ 8,964,407	2.85%	\$ 7,891,643	2.53%	\$ (1,072,764)	-11.97%
INC WITHHOLD	\$ 208,504,460	66.22%	\$ 205,356,718	65.88%	\$ (3,147,742)	-1.51%
FROM OTHER STATES	\$ 11,903,534	3.78%	\$ 12,447,756	3.99%	\$ 544,222	4.57%
ADMIN ENFORCEMENT	\$ 3,732,174	1.19%	\$ 4,308,928	1.38%	\$ 576,754	15.45%
OTHER	\$ 62,141,917	19.74%	\$ 62,118,312	19.93%	\$ (23,605)	-0.04%
TOTAL COLLECTIONS*	\$ 314,847,863	100%	\$ 311,736,910	100%	\$ (3,110,953)	-0.99%
DISBURSED COLLECTIONS**	\$ 277,507,087		\$ 273,900,111		\$ (3,606,976)	-1.30%

* Includes collections on both current support and arrears.

** Includes collections on both current support and arrears; also includes money sent to other states.

SOURCE: NJKiDS (Based on Federal Quarterly Report of Collections - OCSE-34A except Disbursed Collections)
Disbursed Collections obtained from Federal Data Report - OCSE-157, which is reported annually to Congress and used in the calculation of incentive dollars earned by each state.

TABLE 13

OFFICE OF CHILD
SUPPORT SERVICES**OFFICE OF CHILD SUPPORT SERVICES**

State Summary

TITLE IV-D PATERNITY ESTABLISHMENT REPORT

Comparison of May (FFY 18 vs. FFY 19)

County Office	MAY 2018			MAY 2019			Increase or Decrease (-) from FFY 2018 to FFY 2019
	Total Children Born Out of Wedlock*	Number of Paternities Established	Percent of Paternities Established	Total Children Born Out of Wedlock*	Number of Paternities Established	Percent of Paternities Established	
Atlantic	7,263	7,160	98.6%	6,906	6,825	98.8%	0.2%
Bergen	3,566	3,515	98.6%	3,348	3,279	97.9%	-0.6%
Burlington	5,999	5,788	96.5%	5,536	5,366	96.9%	0.4%
Camden	18,684	17,896	95.8%	16,772	16,194	96.6%	0.8%
Cape May	1,462	1,446	98.9%	1,353	1,339	99.0%	0.1%
Cumberland	7,332	7,252	98.9%	6,990	6,919	99.0%	0.1%
Essex	30,082	28,085	93.4%	27,514	25,854	94.0%	0.6%
Gloucester	5,132	5,046	98.3%	4,814	4,734	98.3%	0.0%
Hudson	12,344	11,568	93.7%	11,297	10,676	94.5%	0.8%
Hunterdon	351	345	98.3%	305	300	98.4%	0.1%
Mercer	8,368	8,031	96.0%	7,827	7,544	96.4%	0.4%
Middlesex	7,516	7,278	96.8%	6,975	6,765	97.0%	0.2%
Monmouth	6,307	6,047	95.9%	5,846	5,633	96.4%	0.5%
Morris	1,528	1,511	98.9%	1,406	1,385	98.5%	-0.4%
Ocean	5,486	5,332	97.2%	5,186	5,050	97.4%	0.2%
Passaic	13,285	12,372	93.1%	11,792	11,184	94.8%	1.7%
Salem	2,916	2,815	96.5%	2,850	2,744	96.3%	-0.3%
Somerset	1,795	1,734	96.6%	1,597	1,567	98.1%	1.5%
Sussex	674	668	99.1%	595	593	99.7%	0.6%
Union	11,328	10,727	94.7%	10,784	10,275	95.3%	0.6%
Warren	1,102	1,094	99.3%	1,034	1,020	98.6%	-0.6%
NJ TOTALS	152,520	145,710	95.5%	140,727	135,246	96.1%	0.6%

SOURCE: NJKiDS (Based on Federal Performance Measures - OCSE-157)

* Information on Out of Wedlock Births obtained from NJ Bureau of Vital Statistics

TABLE 14

OFFICE OF CHILD
SUPPORT SERVICES

OFFICE OF CHILD SUPPORT SERVICES

State Summary

TITLE IV-D REPORT OF CASES WITH ORDERS

Comparison of May (FFY 18 vs. FFY 19)

County Office	MAY 2018			MAY 2019			Increase or Decrease (-) from FFY 2018 to FFY 2019
	TOTAL CASES	CASES WITH ORDERS	% OF CASES WITH ORDERS	TOTAL CASES	CASES WITH ORDERS	% OF CASES WITH ORDERS	
Atlantic	13,085	11,372	86.9%	12,436	11,089	89.2%	2.3%
Bergen	12,304	11,880	96.6%	12,011	11,581	96.4%	-0.1%
Burlington	14,698	12,911	87.8%	14,205	12,539	88.3%	0.4%
Camden	32,000	27,227	85.1%	29,072	26,812	92.2%	7.1%
Cape May	3,287	2,996	91.1%	3,184	2,897	91.0%	-0.2%
Cumberland	12,521	11,868	94.8%	12,219	11,596	94.9%	0.1%
Essex	47,246	37,462	79.3%	44,309	36,168	81.6%	2.3%
Gloucester	11,094	10,602	95.6%	10,755	10,251	95.3%	-0.3%
Hudson	23,726	18,956	79.9%	22,230	18,208	81.9%	2.0%
Hunterdon	1,522	1,467	96.4%	1,491	1,414	94.8%	-1.6%
Mercer	15,097	13,316	88.2%	14,268	12,882	90.3%	2.1%
Middlesex	18,487	17,124	92.6%	17,731	16,648	93.9%	1.3%
Monmouth	15,268	14,338	93.9%	14,648	13,919	95.0%	1.1%
Morris	6,157	5,962	96.8%	6,029	5,858	97.2%	0.3%
Ocean	15,514	14,842	95.7%	15,044	14,339	95.3%	-0.4%
Passaic	24,571	17,967	73.1%	22,336	17,355	77.7%	4.6%
Salem	4,583	4,390	95.8%	4,426	4,213	95.2%	-0.6%
Somerset	5,181	4,881	94.2%	4,874	4,577	93.9%	-0.3%
Sussex	2,859	2,746	96.0%	2,694	2,635	97.8%	1.8%
Union	19,227	17,896	93.1%	18,535	17,475	94.3%	1.2%
Warren	3,135	2,885	92.0%	3,073	2,825	91.9%	-0.1%
NJ TOTALS	301,562	263,088	87.2%	285,570	255,281	89.4%	2.2%

SOURCE: NJKiDS (Based on Federal Performance Measures - OCSE-157)

TABLE 15

OFFICE OF CHILD
SUPPORT SERVICES

OFFICE OF CHILD SUPPORT SERVICES

State Summary

TITLE IV-D COLLECTIONS ON CURRENT SUPPORT

Comparison of May (FFY 18 vs. FFY 19)

County Office	MAY 2018			MAY 2019			Increase or Decrease (-) from FFY 2018 to FFY 2019
	Total Current Support Due	Total Current Support Distributed	Total Collection Rate	Total Current Support Due	Total Current Support Distributed	Total Collection Rate	
Atlantic	\$3,905,002	\$2,637,039	67.5%	\$3,889,817	\$2,663,456	68.5%	0.9%
Bergen	\$8,856,881	\$6,845,379	77.3%	\$8,849,577	\$6,861,730	77.5%	0.2%
Burlington	\$6,178,236	\$4,415,715	71.5%	\$6,049,868	\$4,298,820	71.1%	-0.4%
Camden	\$8,375,907	\$5,095,051	60.8%	\$8,256,000	\$5,148,129	62.4%	1.5%
Cape May	\$1,147,231	\$818,744	71.4%	\$1,138,780	\$799,960	70.2%	-1.1%
Cumberland	\$3,163,287	\$1,910,500	60.4%	\$3,212,210	\$1,956,672	60.9%	0.5%
Essex	\$11,397,080	\$6,924,302	60.8%	\$11,231,830	\$6,878,384	61.2%	0.5%
Gloucester	\$4,453,975	\$2,985,865	67.0%	\$4,400,682	\$2,976,256	67.6%	0.6%
Hudson	\$7,415,639	\$5,138,888	69.3%	\$7,427,764	\$5,173,671	69.7%	0.4%
Hunterdon	\$1,313,335	\$1,063,857	81.0%	\$1,308,616	\$1,067,601	81.6%	0.6%
Mercer	\$4,430,234	\$2,810,523	63.4%	\$4,308,389	\$2,787,424	64.7%	1.3%
Middlesex	\$8,184,485	\$5,752,881	70.3%	\$8,021,340	\$5,686,673	70.9%	0.6%
Monmouth	\$7,737,282	\$5,673,867	73.3%	\$7,627,207	\$5,736,006	75.2%	1.9%
Morris	\$4,733,061	\$3,492,837	73.8%	\$4,665,094	\$3,544,481	76.0%	2.2%
Ocean	\$7,092,506	\$5,199,576	73.3%	\$6,903,229	\$5,092,843	73.8%	0.5%
Passaic	\$6,900,939	\$4,525,141	65.6%	\$6,776,445	\$4,508,155	66.5%	1.0%
Salem	\$1,159,302	\$704,182	60.7%	\$1,185,111	\$726,514	61.3%	0.6%
Somerset	\$3,341,113	\$2,656,503	79.5%	\$3,190,374	\$2,597,351	81.4%	1.9%
Sussex	\$1,915,836	\$1,484,494	77.5%	\$1,853,757	\$1,469,194	79.3%	1.8%
Union	\$7,125,007	\$4,994,494	70.1%	\$7,081,803	\$5,021,821	70.9%	0.8%
Warren	\$1,407,200	\$1,054,796	75.0%	\$1,364,498	\$1,043,999	76.5%	1.6%
NJ TOTALS	\$110,233,534	\$76,184,633	69.1%	\$108,742,391	\$76,039,141	69.9%	0.8%

SOURCE: NJKiDS (Based on Federal Performance Measures - OCSE-157)

TABLE 16

OFFICE OF CHILD
SUPPORT SERVICES**OFFICE OF CHILD SUPPORT SERVICES**

State Summary

TITLE IV-D CASES ARREARS COLLECTION REPORT

Comparison of May (FFY 18 vs. FFY 19)

County Office	MAY 2018			MAY 2019			Increase or Decrease (-) from FFY 2018 to FFY 2019
	Total Cases with Arrears	Total Amount Collected	Average Arrears Collection per Case	Total Cases with Arrears	Total Amount Collected	Average Arrears Collection per Case	
Atlantic	7,515	\$792,429	\$105.45	7,429	\$995,903	\$134.06	\$28.61
Bergen	7,696	\$1,412,570	\$183.55	7,495	\$1,550,865	\$206.92	\$23.37
Burlington	8,514	\$1,278,430	\$150.16	8,422	\$1,237,632	\$146.95	-\$3.20
Camden	17,601	\$1,965,053	\$111.64	17,173	\$2,094,871	\$121.99	\$10.34
Cape May	2,096	\$272,336	\$129.93	2,010	\$211,635	\$105.29	-\$24.64
Cumberland	7,827	\$712,703	\$91.06	7,608	\$740,418	\$97.32	\$6.26
Essex	23,625	\$2,919,925	\$123.59	22,808	\$3,175,335	\$139.22	\$15.63
Gloucester	7,094	\$886,694	\$124.99	6,960	\$969,393	\$139.28	\$14.29
Hudson	12,856	\$1,704,551	\$132.59	12,643	\$1,803,904	\$142.68	\$10.09
Hunterdon	903	\$214,060	\$237.05	899	\$206,562	\$229.77	-\$7.29
Mercer	8,815	\$1,032,072	\$117.08	8,659	\$1,112,287	\$128.45	\$11.37
Middlesex	11,433	\$1,664,971	\$145.63	11,180	\$1,749,013	\$156.44	\$10.81
Monmouth	9,233	\$1,458,459	\$157.96	9,003	\$1,552,162	\$172.40	\$14.44
Morris	3,999	\$750,666	\$187.71	3,899	\$780,516	\$200.18	\$12.47
Ocean	9,714	\$1,389,074	\$143.00	9,417	\$1,395,838	\$148.23	\$5.23
Passaic	11,941	\$1,561,723	\$130.79	11,792	\$1,629,597	\$138.20	\$7.41
Salem	2,697	\$276,013	\$102.34	2,665	\$277,207	\$104.02	\$1.68
Somerset	3,284	\$566,921	\$172.63	3,089	\$574,072	\$185.84	\$13.21
Sussex	1,836	\$304,570	\$165.89	1,786	\$347,820	\$194.75	\$28.86
Union	11,841	\$1,770,064	\$149.49	11,566	\$1,778,575	\$153.78	\$4.29
Warren	1,929	\$256,568	\$133.01	1,803	\$248,147	\$137.63	\$4.62
NJ TOTALS	172,449	\$23,189,852	\$134.47	168,306	\$24,431,752	\$145.16	\$10.69

SOURCE:OCSE-157 Child Support Enforcement Annual Data Report

Table 17
WFNJ**WORK FIRST NEW JERSEY STATISTICAL SUMMARY****MAY 2019**

COUNTY	EMPLOYMENT DIRECTED ACTIVITIES			EMPLOYED OPEN (WFNJ RECIPIENT)	SUPPORT SERVICES ON ACTIVE CASE		CLOSED FOR EMPLOYMENT THIS MONTH	POST ASSISTANCE CHILD CARE
	CWEP	ALL OTHER TRAINING	JOB SEARCH		CHILD CARE	TRAINING REL. EXPENSES		
ATLANTIC	23	77	8	61	NA	187	17	NA
BERGEN	50	5	36	18		33	4	
BURLINGTON	30	13	52	48		59	6	
CAMDEN	148	141	4	144		159	13	
CAPE MAY	5	5	1	11		6	1	
CUMBERLAND	42	64	20	14		72	2	
ESSEX	287	369	65	207		340	24	
GLOUCESTER	10	26	4	31		8	4	
HUDSON	135	209	26	101		251	17	
HUNTERDON	0	0	0	1		0	0	
MERCER	88	89	46	83		85	16	
MIDDLESEX	23	19	42	29		18	8	
MONMOUTH	15	17	20	38		27	7	
MORRIS	9	12	3	10		8	1	
OCEAN	4	126	0	15		27	6	
PASSAIC	259	146	10	72		168	16	
SALEM	18	13	8	9		11	0	
SOMERSET	56	18	4	21		33	2	
SUSSEX	7	0	2	6		2	1	
UNION	117	51	1	37		74	8	
WARREN	8	6	3	18		3	2	
STATE	1,334	1,406	355	974	NA	1,571	155	NA

Data is derived from NJ Division of Family Development's FAMIS Reports RM064-01 & RM703-51, AdHoc Reports 5549 & 5598 and SDW Report WR00022WZ_CC

* The number of cases receiving Child Care and Post Assistance Child Care is not available.

The source of the information has changed, we have a request in to obtain it from the new source.

**DIVISION OF FAMILY DEVELOPMENT CURRENT PROGRAM STATISTICS
MAY 2019**

ACRONYMS

EMERGENCY ASSISTANCE (EA) - Payments to those eligible for WFNJ/TANF or WFNJ/GA, authorized during the 30 consecutive days immediately following the emergency (defined as a substantial loss of shelter, food, clothing, or household furnishings by fire, flood or other similar disaster) or if eligible individual or family is in an imminent or actual state of homelessness.

NJ SNAP - Formerly the Food Stamp Program, now known as **NJ SNAP** (NJ Supplemental Nutrition Assistance Program) authorized by Congress as a nutritional supplement program to provide low income households with more food of greater variety and better nutrition. Program eligibility is based on household income, resources, and expenses for medical, shelter, and dependent care. CWA staff refers certain recipients to the New Jersey Department of Labor for participation in the Food Stamp Employment and Training Program.

FAMIS: Family Assistance Management Information System

GAAS: General Assistance Automated System

NJKiDS: New Jersey Kids Deserve Support (Child Support Information Management System)

NJ MMIS SHARED DATA WAREHOUSE: The Shared Data Warehouse (SDW) is the repository for New Jersey's DFD and Medicaid data. Since 2003, OptumInsight has administered the SDW and provided access to the data through a reporting tool known as Business Objects.

OMEGA: Online Management of Economic Goal Achievement

SSI-EA: Supplemental Security Income-Emergency Assistance

WFNJ: Work First New Jersey - Fully implemented July 1, 1997, this is New Jersey's welfare reform program which responds to the requirements of the Federal Personal Responsibility and Work Opportunity Reconciliation Act (**PRWORA**) of 1996. PRWORA established Temporary Assistance for Needy Families (**TANF**) as the replacement for AFDC cash assistance. WFNJ includes two segments, **WFNJ/TANF** for families with children, and **WFNJ/GA** (General Assistance) for single adults and couples without dependent children. WFNJ emphasizes achieving self-sufficiency and limits lifetime receipt of financial assistance to a total of five years.

**DIVISION OF FAMILY DEVELOPMENT CURRENT PROGRAM STATISTICS
MAY 2019**

EXPLANATORY NOTES

The Department of Human Services Division of Family Development provides basic income and an opportunity to achieve self-sufficiency for individuals and families served by the Division's programs. The Division provides leadership, direction and supervision to those public agencies responsible for administering those programs and plans for and develops policies to promote self-sufficiency.

WFNJ Statistical Summary (Table 17)

Employment Directed Activities (EDA) - From Activities Summary Report (OMEGA report # RM064). Unduplicated count of persons participating in Community Work Experience Program (CWEP), All Other Training, or Job Search.

Number of Persons Employed This Month, Still Receiving TANF Individuals with open "empl" activity on OMEGA. Ad hoc report.

Participants Receiving Child Care Services - From Issuance Disbursement Summary (OMEGA report # RM703). Total number of active participants who show receipt of **Child Care**.

Number of Persons Closed on FAMIS Due to Employment - From FAMIS report #5549-RM-2.

Post TANF and Receiving Child Care - Persons no longer in receipt of TANF but still receiving child care. From Share Data Warehouse Child Care case count based on Child Care payments (SDW report WR00022WZ_CC).