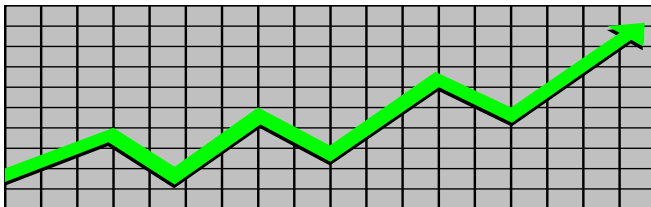


State of New Jersey
Department of Human Services
Division of Family Development

CURRENT PROGRAM STATISTICS



May 2022

Natasha Johnson, Assistant Commissioner

TABLE OF CONTENTS

HIGHLIGHTS:

WFNJ/TANF	ii
NJ SNAP	ii
EMERGENCY ASSISTANCE	ii
GENERAL ASSISTANCE	iii
GA Emergency Assistance.....	iii
GA Program.....	iii
CHILD SUPPORT SERVICES	iii
WORK FIRST NEW JERSEY (WFNJ)	iii
STATISTICS- BY STATE & COUNTY	1
Table 1: WFNJ/TANF Families & Persons (NJ Statewide) May 2020 to 2022.....	1
Table 2: WFNJ/TANF Families (by County)- May 2022.....	2
Table 2B: WFNJ/TANF Persons, Adults, & Children (by County)- May 2022.....	3
Table 3: TANF Work Participation Rates Over 12 Month Period (by County)- May 2022.....	4
Table 4: TANF Work Participation Rates Over 12 Month Period (NJ Statewide)- May 2022.....	5
Table 5: NJ SNAP Households/Persons (NJ Statewide) May 2020 to 2022.....	6
Table 6: NJ SNAP Recipient Trends (NJ Statewide) May 2020 to 2022.....	7
Table 7: NJ SNAP Households/Persons (by County)- May 2022.....	8
Table 8: Emergency Assistance Program (NJ Statewide) May 2020 to 2022.....	9
Table 9: Emergency Assistance Program (by County)- May 2022.....	10
Table 10: General Assistance Program (NJ Statewide) May 2020 to 2022.....	11
Table 11: General Assistance Program (by County)- May 2022.....	12
Table 12: Child Support Services Distributions (NJ Statewide) FFY 2022.....	13
Table 13: Child Support Services Paternities Established- May 2022.....	14
Table 14: Child Support Services Cases With Orders- May 2022.....	15
Table 15: Child Support Services Collections On Current Support- May 2022.....	16
Table 16: Child Support Services Cases With Payments On Arrears- May 2022.....	17
Table 17: WFNJ Statistical Summary- May 2022.....	18
ACRONYMS	19
EXPLANATORY NOTES	20
WFNJ Statistical Summary (Table 17).....	20

DIVISION OF FAMILY DEVELOPMENT CURRENT PROGRAM STATISTICS

MAY 2022

Each month the Division of Family Development publishes its program statistics for: WFNJ/TANF, NJ SNAP, Emergency Assistance, General Assistance, and Child Support Services. When possible, information is provided separately for children and adults. Many tables also provide trend data with information broken down by county for readers to consider. This report is compiled and prepared by The Bureau of Research & Reporting.

WFNJ/TANF

- As of the end of May, the TANF caseload had increased by 852 cases, from 9,763 in May 2021 to 10,615 in May 2022; an increase of 8.7%.
- The counties with caseloads that increased the most since May 2021 were Hunterdon (46.2%), Salem (41.3%), and Union (32.2%).
- The counties with caseloads that decreased the most since May 2021 were Warren (-26.6%), Essex (-22.6%), and Cumberland (-2.4%).
- Of the WFNJ/TANF cases, 2,723 or 25.7% were child-only in May 2022.
- The counties with the most child-only cases were Camden (475), Hudson (308), and Passaic (284).
- Hudson (4,518), Camden (3,974), and Essex (3,337) counties had the greatest number of persons receiving TANF in May 2022.

NJ SNAP (Formerly FOOD STAMPS)

- In May 2022, there were 434,341 households receiving NJ SNAP benefits. The number of NJ SNAP households decreased by 3,991 or -0.9%, since May 2021.
- There were 834,866 persons receiving NJ SNAP benefits as of May 2022; a decrease of 15,112 or -1.8% since May 2021.
- The counties having the highest SNAP caseload increase since May 2021 were Essex (4.9%), Hunterdon (4.8%), and Camden (3.7%).
- The counties having the highest SNAP caseload decrease since May 2021 were Warren (-12.9%), Sussex (-8.5%), and Gloucester (-7.8%).

EMERGENCY ASSISTANCE

- There were 1,376 TANF families receiving Emergency Assistance (EA) in May 2022; an increase of 20 or 1.5% since May 2021.
- In May 2022, EA payments were made for 591 SSI recipients.

DIVISION OF FAMILY DEVELOPMENT CURRENT PROGRAM STATISTICS MAY 2022

- There were 1,902 GA cases with Emergency Assistance payments in May 2022; an increase of 592 or 45.2% since May 2021.
- The counties that showed the highest percent increase in Emergency Assistance payments were Hunterdon (300%), Morris (162.5%), and Monmouth (144.2%).
- The counties that showed the highest percent decrease in Emergency Assistance payments were Sussex (-42.9%), Gloucester (-8%), and Hudson (-2.8%).

GENERAL ASSISTANCE

- The total numbers of cases receiving GA has increased from 14,051 to 15,844 since May 2021; an increase of 12.8%.
- There were 12,039 Employable GA and 3,805 Unemployable GA cases in May 2022.
- The counties that showed a percent increase for GA cases were Hunterdon (67.4%), Morris (47.7%), and Atlantic (43.2%) since May 2021.
- The counties that showed the highest percent decrease for GA cases since May 2021 were Sussex (-32.7%), Hudson (-16.6%), and Warren (-12.7%).
- In May 2022, GA cases showed a 1.35% increase since April 2022.

CHILD SUPPORT SERVICES (QUARTERLY REPORT)

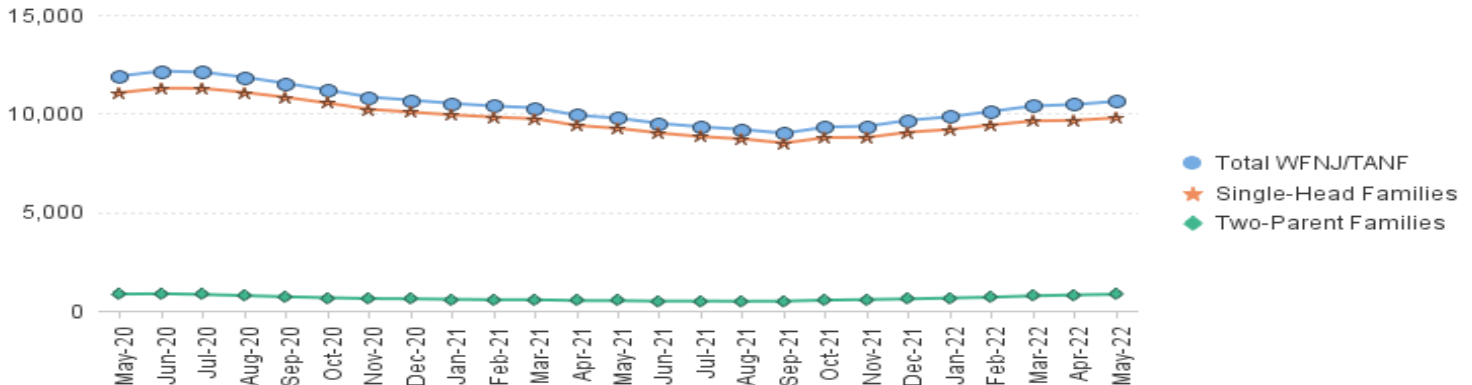
- The total collection for the Child Support Services Program was about \$280 million from January 2022 to March 2022; a decrease of -4.72% over the same period from FFY .
- Total distributions decreased -7.4% from March 2021.

WORK FIRST NEW JERSEY (WFNJ)

- During the report month of May 2022, there were 426 families in which at least one member was employed and an additional 107 families whose WFNJ assistance cases were closed due to employment - related earnings.
- The three counties with the greatest number of employed active WFNJ recipients were: Hudson (78), Essex (57), and Mercer (47).
- There were 205 former TANF cases receiving post-TANF support in the form of child care assistance.

TABLE 1:
WFNJ/TANF
PROGRAMSTATEWIDE NUMBER OF APPLICATIONS AND TERMINATIONS DURING MAY 2022
NUMBER OF ELIGIBLE FAMILIES & PERSONS RECEIVING WFNJ/TANF FOR MAY 2022

MAY 2020 THROUGH MAY 2022												
		Cases Added	Cases Closed	Child-Only Cases ‡	Total Single-Head Families	2-Parent Families	Total WFNJ/TANF Families	%CHNG (1 Yr.)	Total Persons	%CHNG (1 Yr.)	Adults	Children
2020	MAY	832	232	3,696	11,057	845	11,902	10.2%	30,734	14.4%	9,051	21,683
	JUN	539	278	3,722	11,281	866	12,147	12.9%	31,370	17.6%	9,291	22,079
	JUL	458	526	3,686	11,274	826	12,100	14.2%	31,216	18.6%	9,240	21,976
	AUG	410	660	3,665	11,070	768	11,838	10.2%	30,454	13.9%	8,941	21,513
	SEP	475	796	3,603	10,817	711	11,528	7.3%	29,531	10.2%	8,636	20,895
	OCT	534	904	3,564	10,532	659	11,191	7.6%	28,657	9.6%	8,286	20,371
	NOV	419	767	3,470	10,218	617	10,835	-1.1%	27,738	0.3%	7,982	19,756
	DEC	434	595	3,410	10,071	607	10,678	-2.5%	27,371	-1.4%	7,875	19,496
2020	Average	682	724	3,614	10,607	698	11,306		28,973		8,390	20,583
2021	JAN	400	585	3,379	9,932	580	10,512	-1.7%	26,960	-0.6%	7,713	19,247
	FEB	378	504	3,347	9,818	559	10,377	-4.1%	26,520	-3.6%	7,589	18,931
	MAR	397	481	3,311	9,735	557	10,292	-3.9%	26,335	-3.2%	7,538	18,797
	APR	298	704	3,224	9,395	518	9,913	-11.8%	25,276	-12.1%	7,207	18,069
	MAY	264	510	3,209	9,250	513	9,763	-18.0%	24,858	-19.1%	7,067	17,791
	JUN	373	636	3,141	9,008	489	9,497	-21.8%	24,146	-23.0%	6,845	17,301
	JUL	391	590	3,068	8,829	493	9,322	-23.0%	23,785	-23.8%	6,747	17,038
	AUG	415	544	3,029	8,709	482	9,191	-22.4%	23,445	-23.0%	6,644	16,801
	SEP	388	588	2,945	8,507	489	8,996	-22.0%	23,009	-22.1%	6,540	16,469
	OCT	833	564	2,921	8,779	538	9,317	-16.7%	23,888	-16.6%	6,934	16,954
	NOV	656	614	2,816	8,791	568	9,359	-13.6%	24,282	-12.5%	7,111	17,171
	DEC	702	432	2,824	9,054	601	9,655	-9.6%	25,177	-8.0%	7,432	17,745
2021	Average	458	563	3,101	9,151	532	9,683		24,807		7,114	17,693
2022	JAN	667	484	2,796	9,193	645	9,838	-6.4%	25,789	-4.3%	7,687	18,102
	FEB	655	414	2,794	9,424	689	10,113	-2.5%	26,638	0.4%	8,008	18,630
	MAR	715	512	2,804	9,623	756	10,379	0.8%	27,433	4.2%	8,331	19,102
	APR	644	622	2,743	9,656	802	10,458	5.5%	27,749	9.8%	8,517	19,232
	MAY	632	475	2,723	9,777	838	10,615	8.7%	28,183	13.4%	8,730	19,453
2022	Average To Date	663	501	2,772	9,535	746	10,281		27,158		8,255	18,904

NJ STATEWIDE
Eligible Families Receiving WFNJ/TANF
MAY 2020 THROUGH MAY 2022

Data is derived from NJ MMIS Shared Data Warehouse Issuance files.
Effective July 2013 this data query source was converted to the SDW

‡ Child-only cases are defined as families in which no eligible adult receives TANF program benefits, yet the family continues to be headed by at least one of the biological parents, or grandparents, or other appropriate adult.

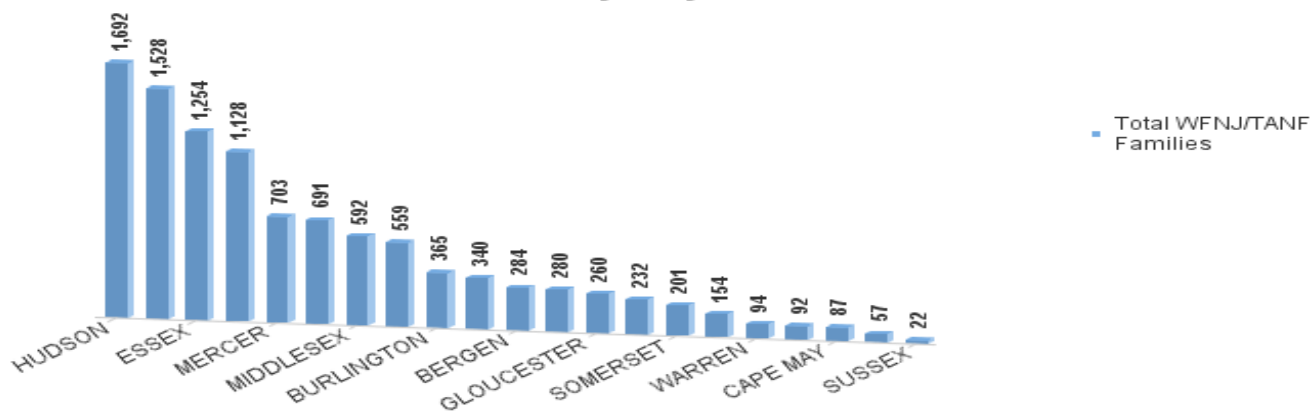
TABLE 2:

WFNJ/TANF
PROGRAM

NUMBER OF APPLICATIONS AND TERMINATIONS BY COUNTY DURING MAY 2022

NUMBER OF ELIGIBLE FAMILIES RECEIVING WFNJ/TANF FOR MAY 2022

County	Cases Added	Cases Closed **	Child- Only Cases ‡	1-Adult Cases	Total Single-Head Families	2-Parent Families	Total WFNJ/TANF Families	%CHNG (3 Mon)	%CHNG (1 Yr.)
ATLANTIC	33	26	234	414	648	43	691	-1.3%	5.8%
BERGEN	22	15	52	203	255	29	284	6.0%	18.3%
BURLINGTON	27	17	103	246	349	16	365	11.6%	15.5%
CAMDEN	67	45	475	959	1,434	94	1,528	4.2%	17.9%
CAPE MAY	6	5	27	57	84	3	87	1.2%	2.4%
CUMBERLAND	18	29	109	153	262	18	280	-9.1%	-2.4%
ESSEX	69	42	282	896	1,178	76	1,254	3.4%	-22.6%
GLOUCESTER	19	17	66	181	247	13	260	-5.5%	5.7%
HUDSON	145	89	308	1,200	1,508	184	1,692	3.0%	22.3%
HUNTERDON	2	6	8	41	49	8	57	-3.4%	46.2%
MERCER	49	19	207	470	677	26	703	8.7%	18.5%
MIDDLESEX	34	39	188	376	564	28	592	-2.0%	12.8%
MONMOUTH	16	10	60	163	223	9	232	7.9%	31.1%
MORRIS	7	4	23	56	79	13	92	13.6%	9.5%
OCEAN	13	13	68	250	318	22	340	3.7%	7.9%
PASSAIC	38	41	284	766	1,050	78	1,128	-0.3%	8.1%
SALEM	14	7	35	95	130	24	154	2.0%	41.3%
SOMERSET	3	10	43	140	183	18	201	0.5%	13.6%
SUSSEX	3	6	8	10	18	4	22	-4.3%	0.0%
UNION	40	22	121	314	435	124	559	1.6%	32.2%
WARREN	7	13	22	64	86	8	94	-9.6%	-26.6%
NJ Total	632	475	2,723	7,054	9,777	838	10,615	2.3%	8.7%

Total WFNJ/TANF Families
MAY 2022
By County

Data is derived from NJ MMIS Shared Data Warehouse Issuance files.
Effective July 2013 this data query source was converted to the SDW

‡ Child-only cases are defined as families in which no eligible adult receives TANF program benefits, yet the family continues to be headed by at least one of the biological parents, or grandparents, or other appropriate adult

** 'Cases closed' include cases that received a benefit in the prior month, but did not receive any TANF benefit for the report month.

Δ=higher caseload % change

*=lower caseload % change

TABLE 2B :

WFNJ/TANF

NUMBER OF PARTICIPATING PERSONS, ADULTS, AND CHILDREN

PROGRAM

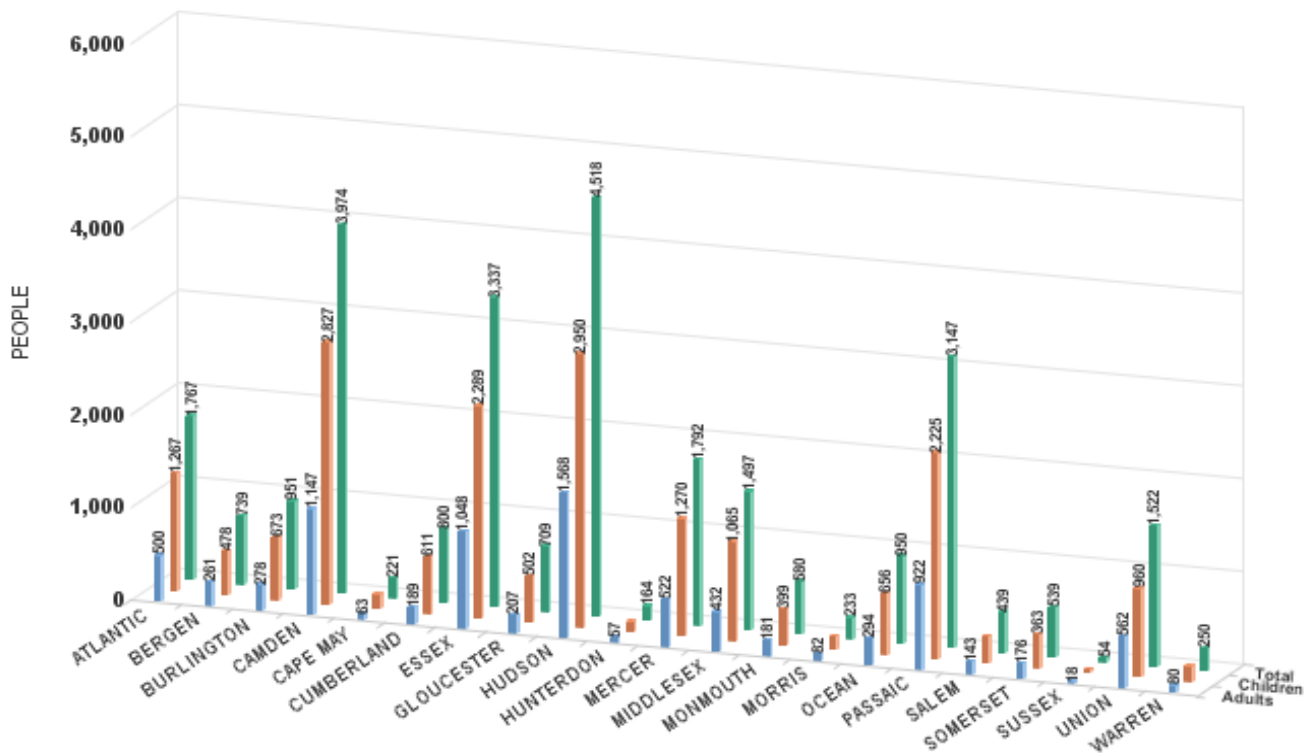
BY COUNTY FOR MAY 2022

PERSONS

County	Adults	Children	Child/Adult Ratio	Total Persons	% Chng (1 Yr)	Persons Per Case
ATLANTIC	500	1,267	2.53	1,767	9.3%	2.56
BERGEN	261	478	1.83	739	23.4%	2.60
BURLINGTON	278	673	2.42	951	20.4%	2.61
CAMDEN	1,147	2,827	2.46	3,974	24.5%	2.60
CAPE MAY	63	158	2.51	221	4.2%	2.54
CUMBERLAND	189	611	3.23	800	-0.7%	2.86
ESSEX	1,048	2,289	2.18	3,337	-20.1% *	2.66
GLOUCESTER	207	502	2.43	709	18.8%	2.73
HUDSON	1,568	2,950	1.88	4,518	29.7%	2.67
HUNTERDON	57	107	1.88	164	53.3% Δ	2.88
MERCER	522	1,270	2.43	1,792	20.0%	2.55
MIDDLESEX	432	1,065	2.47	1,497	13.8%	2.53
MONMOUTH	181	399	2.20	580	42.9% Δ	2.50
MORRIS	82	151	1.84	233	10.4%	2.53
OCEAN	294	656	2.23	950	13.9%	2.79
PASSAIC	922	2,225	2.41	3,147	13.3%	2.79
SALEM	143	296	2.07	439	56.8% Δ	2.85
SOMERSET	176	363	2.06	539	17.2%	2.68
SUSSEX	18	36	2.00	54	-10.0% *	2.45
UNION	562	960	1.71	1,522	38.6%	2.72
WARREN	80	170	2.13	250	-27.1% *	2.66
NJ Total	8,730	19,453	2.23	28,183	13.4%	2.66

Δ=higher caseload % change

*=lower caseload % change



Data is derived from NJ MMIS Shared Data Warehouse Issuance files.
Effective July 2013 this data query source was converted to the SDW

TABLE 3 :

Work Participation Rates Achieved Over 12 Month Period
Ending with MAY 2022

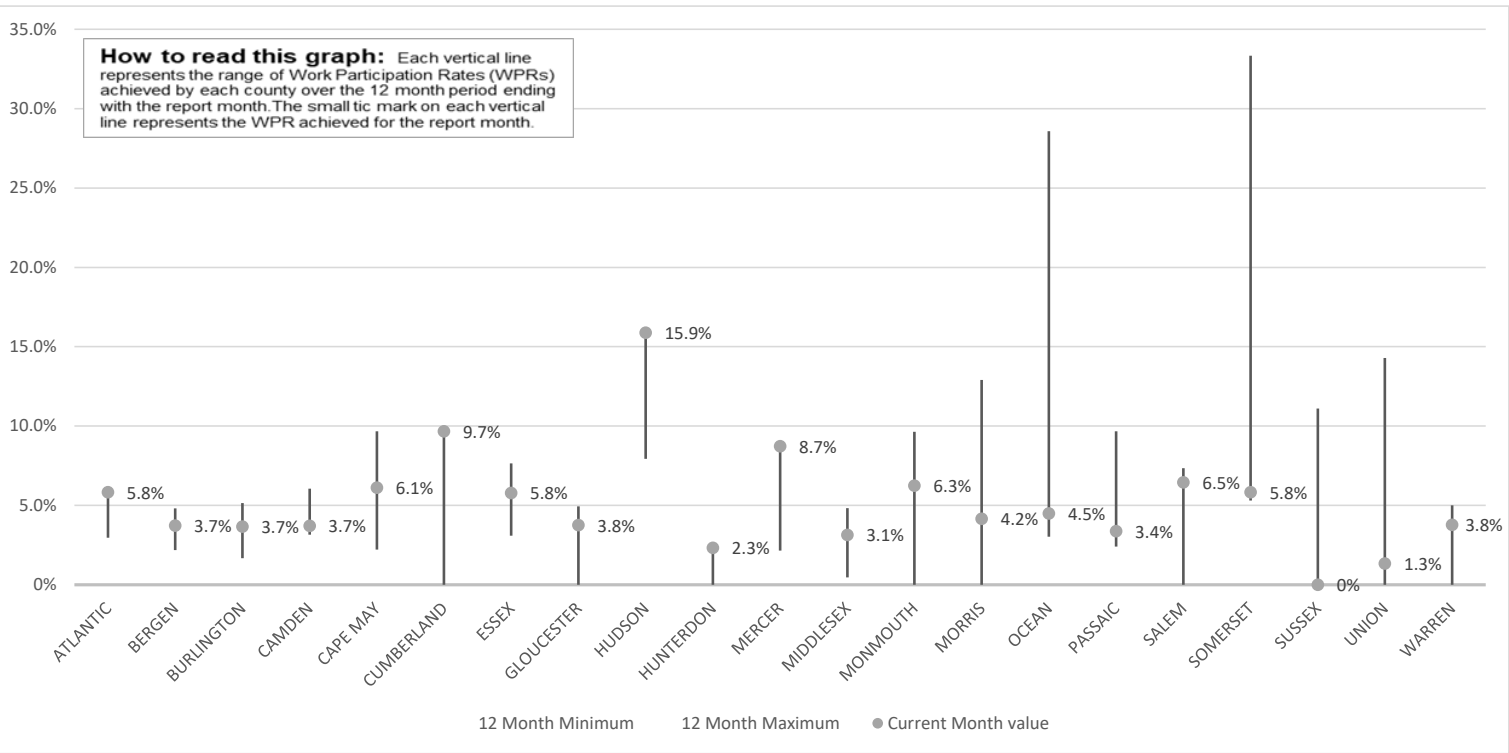
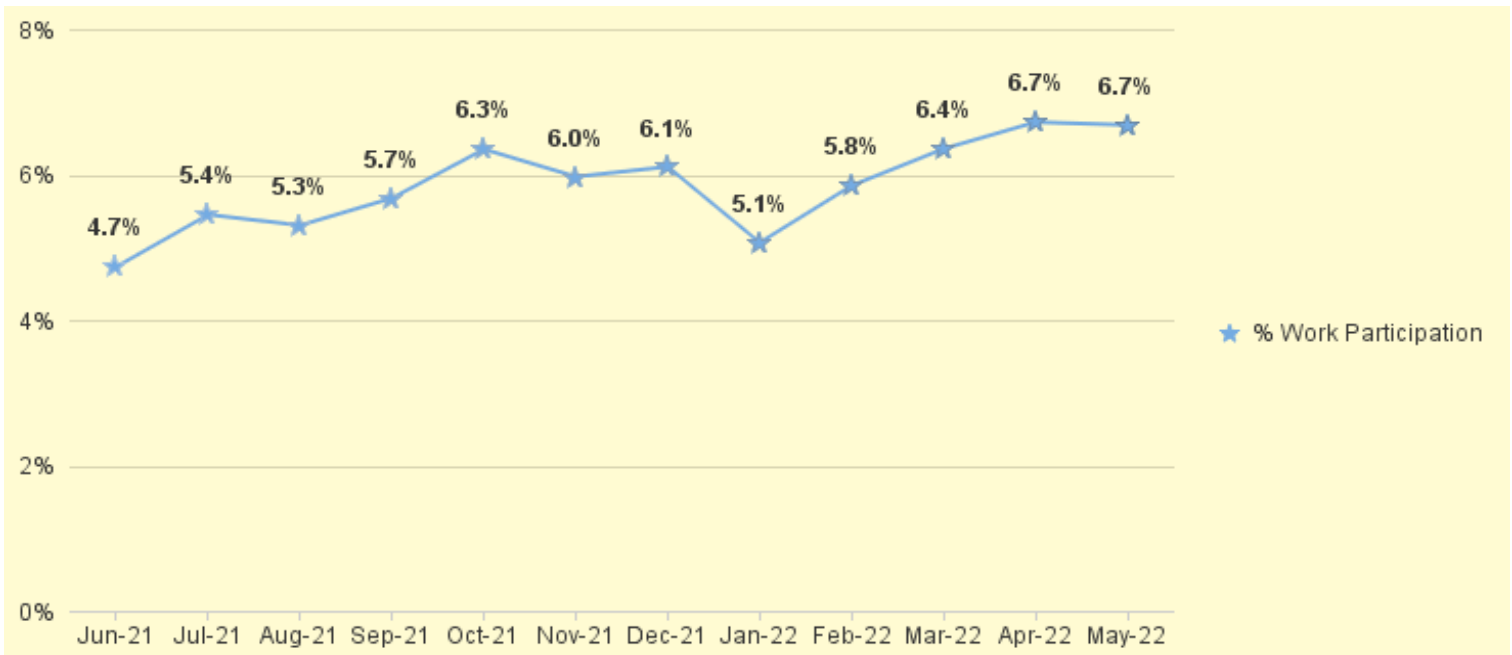


TABLE 4 :
WFNJ/TANFWork Participation Rates
for 12-Month Period Ending with MAY 2022 Statewide

* The Work Participation rate measures the number of countable Temporary Assistance for Needs Families (TANF) participants based on federal formula. The reported rate is considered to be preliminary until officially calculated by the federal government soon after the close of each federal fiscal year.

TABLE 5 :
NJ SNAP
(FOOD STAMPS)NUMBER OF PARTICIPATING HOUSEHOLDS, PERSONS, ADULTS
AND CHILDREN FOR MAY 2022 (STATEWIDE)

MAY 2020 THROUGH MAY 2022											
HOUSEHOLDS						PERSONS				Age 60+	People with a disability
		WFNJ/ TANF	Other low income	Total	% CHNG (1 YR)	Adults	Children	TOTAL	% CHNG (1 YR)		
2020	MAY	11,513	353,998	365,511	5.2%	394,281	323,636	717,917	4.4%	119,744	208,152
	JUN	11,522	358,302	369,824	6.7%	398,959	326,357	725,316	5.9%	120,137	209,224
	JUL	11,336	364,797	376,133	9.4%	405,652	329,166	734,818	8.1%	120,881	211,115
	AUG	11,044	373,293	384,337	10.8%	414,644	333,705	748,349	9.0%	118,173	204,375
	SEP	10,928	384,063	394,991	15.7%	426,710	342,621	769,331	14.1%	122,341	214,255
	OCT	10,605	393,716	404,321	17.8%	437,538	350,440	787,978	16.2%	123,068	216,012
	NOV	10,335	395,876	406,211	18.7%	440,136	350,631	790,767	17.1%	123,104	216,208
	DEC	10,308	401,212	411,520	20.8%	446,083	354,408	800,491	19.3%	123,498	221,131
2020	Average	10,790	361,610	372,400		401,036	326,988	728,024		120,180	209,182
2021	JAN	10,214	409,050	419,264	24.8%	454,910	360,490	815,400	23.6%	123,751	221,129
	FEB	9,980	413,080	423,060	25.6%	459,801	362,760	822,561	24.4%	123,888	221,585
	MAR	9,632	418,259	427,891	27.7%	465,302	366,223	831,525	26.5%	124,614	222,961
	APR	9,474	423,186	432,660	24.3%	470,412	369,625	840,037	23.0%	125,182	224,256
	MAY	9,371	428,961	438,332	19.9%	476,827	373,151	849,978	18.4%	125,750	225,339
	JUN	9,833	440,525	450,358	21.8%	490,430	393,310	883,740	21.8%	126,085	227,479
	JUL	9,067	437,889	446,956	18.8%	485,975	379,528	865,503	17.8%	126,552	227,352
	AUG	9,070	442,333	451,403	17.4%	490,577	383,106	873,683	16.7%	127,091	228,513
	SEP	9,561	447,902	457,463	15.8%	497,122	390,345	887,467	15.4%	127,550	229,863
	OCT	9,822	452,139	461,961	14.3%	502,415	388,925	891,340	13.1%	128,700	231,751
	NOV	9,967	455,343	465,310	14.5%	506,476	391,904	898,380	13.6%	129,292	233,050
	DEC	10,138	458,239	468,377	13.8%	510,116	392,757	902,873	12.8%	129,744	238,680
2021	Average	9,677	435,576	445,253		484,197	379,344	863,541		126,517	227,663
2022	JAN	10,418	457,935	468,353	11.7%	509,801	392,651	902,452	10.7%	157,425	236,238
	FEB	10,486	451,733	462,219	9.3%	503,693	385,199	888,892	8.1%	156,540	232,864
	MAR	10,588	455,766	466,354	9.0%	508,290	388,977	897,267	7.9%	158,331	234,617
	APR	10,706	439,659	450,365	4.1%	491,276	375,105	866,381	3.1%	156,504	231,071
	MAY	10,669	423,672	434,341	-0.9%	474,542	360,324	834,866	-1.8%	154,816	227,400
2022	Average To Date	10,573	445,753	456,326		497,520	380,451	877,972		156,723	232,438

This Table is based on those Households & Persons that recived SNAP issuances (benefits) during the month

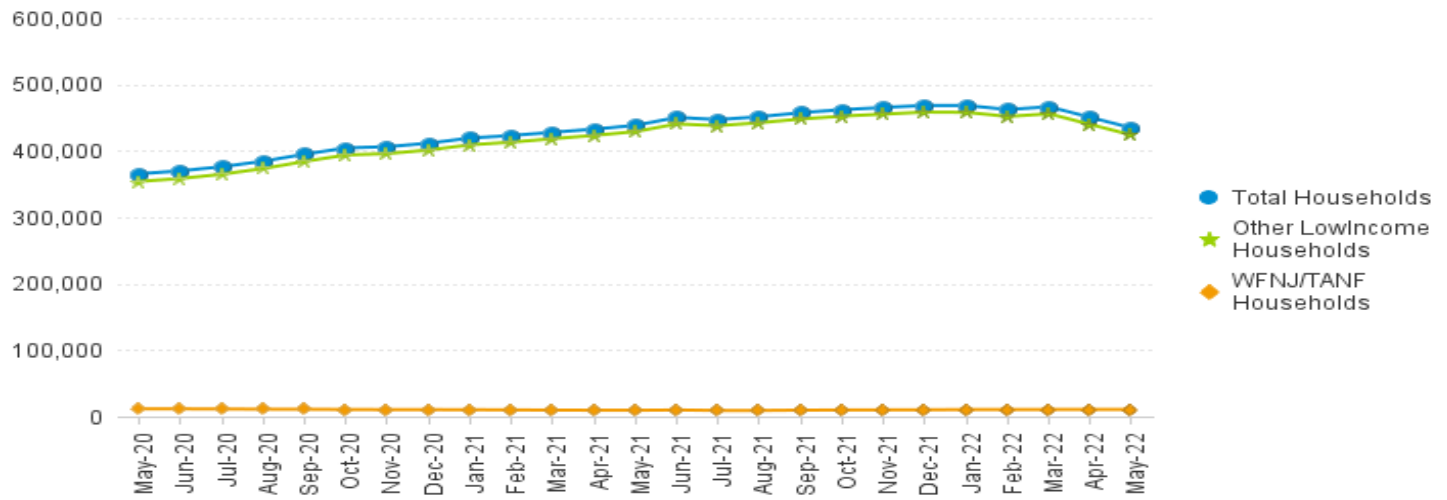
Data is derived from NJ MMIS Shared Data Warehouse.

Effective July 2013 this data query source was converted to the SDW.

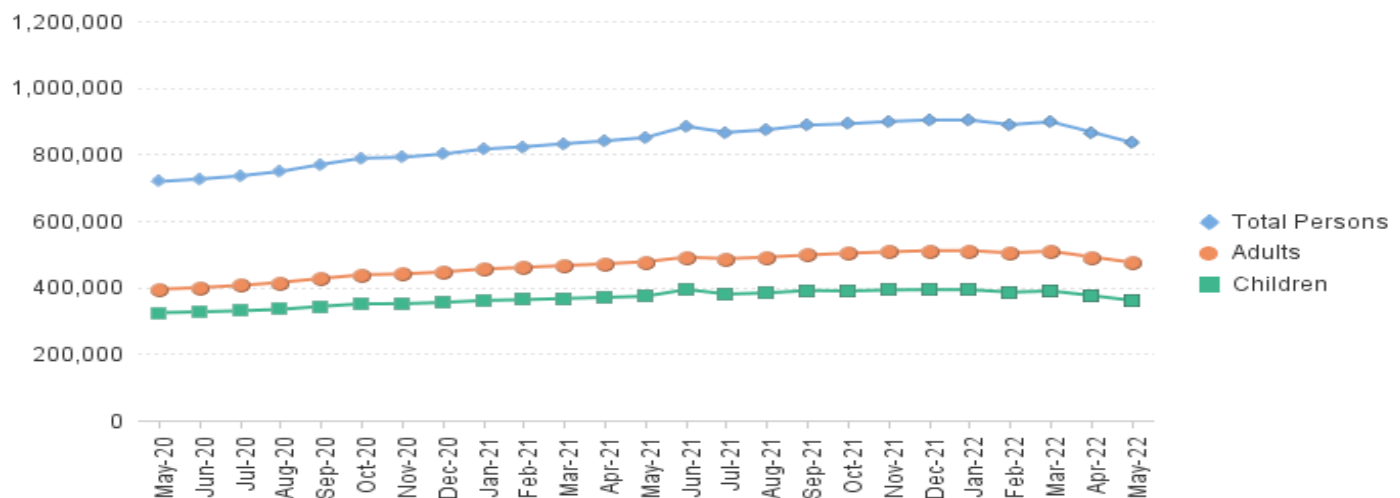
* Age 60+ and People with a disability columns are independent subsets of total persons. An individual might appear in both columns.

**TABLE 6: NJ SNAP (FOOD STAMPS)
TRENDS FOR PARTICIPATING HOUSEHOLDS & PERSONS
MAY 2020 THROUGH MAY 2022 (STATEWIDE)**

Statewide NJ SNAP Households: MAY 2020 Through MAY 2022



Statewide NJ SNAP Persons: MAY 2020 Through MAY 2022



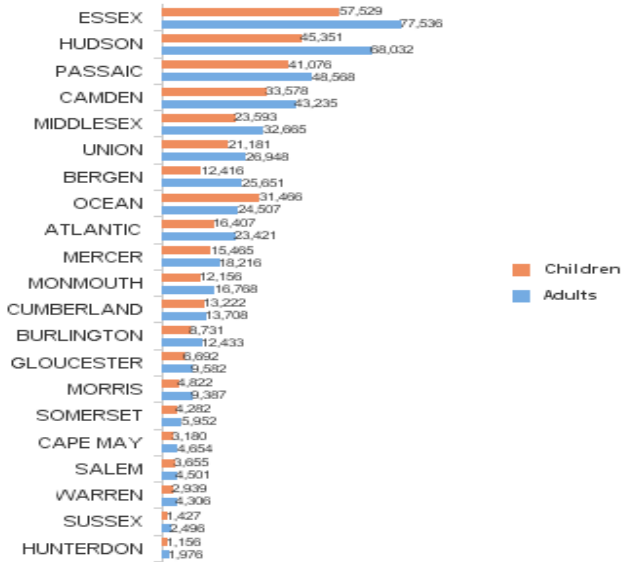
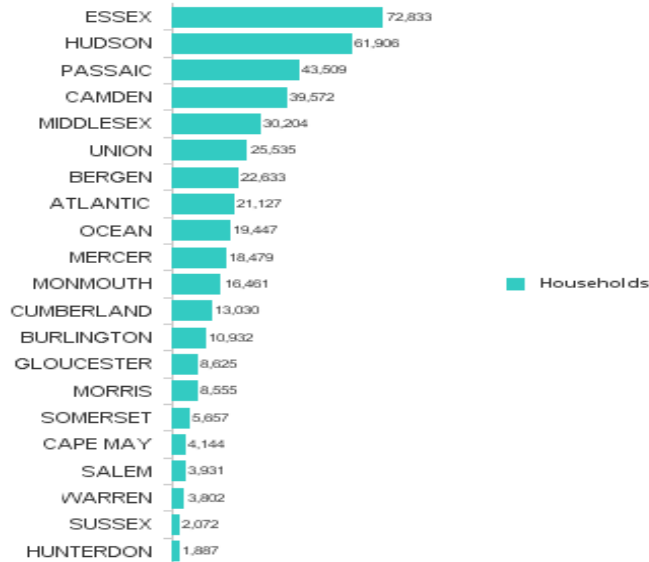
Data is derived from NJ MMIS Shared Data Warehouse Issuance files.
Effective July 2013 this data query source was converted to the SDW

TABLE 7 :
NJ SNAPNUMBER OF PARTICIPATING HOUSEHOLDS, PERSONS, ADULTS
AND CHILDREN BY COUNTY FOR MAY 2022

County	HOUSEHOLDS				PERSONS				Age 60+	People with a disability
	WFNJ/ TANF	Other low income	TOTAL	% Chng (1 Yr)	Adults	Children	TOTAL	% Chng (1 Yr)		
ATLANTIC	664	20,463	21,127	-1.5%	23,421	16,407	39,828	-2.8%	6,698	10,874
BERGEN	290	22,343	22,633	0.7%	25,651	12,416	38,067	1.7%	13,919	15,928
BURLINGTON	363	10,569	10,932	-6.3%	12,433	8,731	21,164	-7.5%	3,635	6,595
CAMDEN	1,433	38,139	39,572	3.7% Δ	43,235	33,578	76,813	2.5% Δ	10,704	19,983
CAPE MAY	89	4,055	4,144	-3.5%	4,654	3,180	7,834	-2.9%	1,311	2,290
CUMBERLAND	276	12,754	13,030	-3.2%	13,708	13,222	26,930	-3.2%	3,543	7,091
ESSEX	1,538	71,295	72,833	4.9% Δ	77,536	57,529	135,065	1.2%	20,346	32,042
GLOUCESTER	248	8,377	8,625	-7.8% *	9,582	6,692	16,274	-9.4% *	2,946	5,928
HUDSON	1,622	60,284	61,906	-2.4%	68,032	45,351	113,383	-3.2%	23,193	29,501
HUNTERDON	41	1,846	1,887	4.8% Δ	1,976	1,156	3,132	3.3% Δ	723	1,088
MERCER	724	17,755	18,479	-3.0%	18,216	15,465	33,681	-3.7%	5,497	10,428
MIDDLESEX	615	29,589	30,204	2.5%	32,665	23,593	56,258	1.4%	14,047	17,868
MONMOUTH	231	16,230	16,461	-7.5%	16,768	12,156	28,924	-8.1% *	6,630	9,738
MORRIS	108	8,447	8,555	1.8%	9,387	4,822	14,209	0.3%	4,753	5,441
OCEAN	355	19,092	19,447	2.0%	24,507	31,466	55,973	4.9% Δ	6,550	10,473
PASSAIC	1,090	42,419	43,509	-6.1%	48,568	41,076	89,644	-5.9%	15,531	20,092
SALEM	158	3,773	3,931	-5.7%	4,501	3,655	8,156	-3.8%	1,143	2,247
SOMERSET	195	5,462	5,657	-4.6%	5,952	4,282	10,234	-5.3%	2,456	3,432
SUSSEX	37	2,035	2,072	-8.5% *	2,496	1,427	3,923	-5.9%	877	1,484
UNION	499	25,036	25,535	-1.8%	26,948	21,181	48,129	-3.0%	9,031	12,554
WARREN	93	3,709	3,802	-12.9% *	4,306	2,939	7,245	-14.1% *	1,283	2,323
NJ TOTAL	10,669	423,672	434,341	-0.9%	474,542	360,324	834,866	-1.8%	154,816	227,400

Δ=higher caseload % change

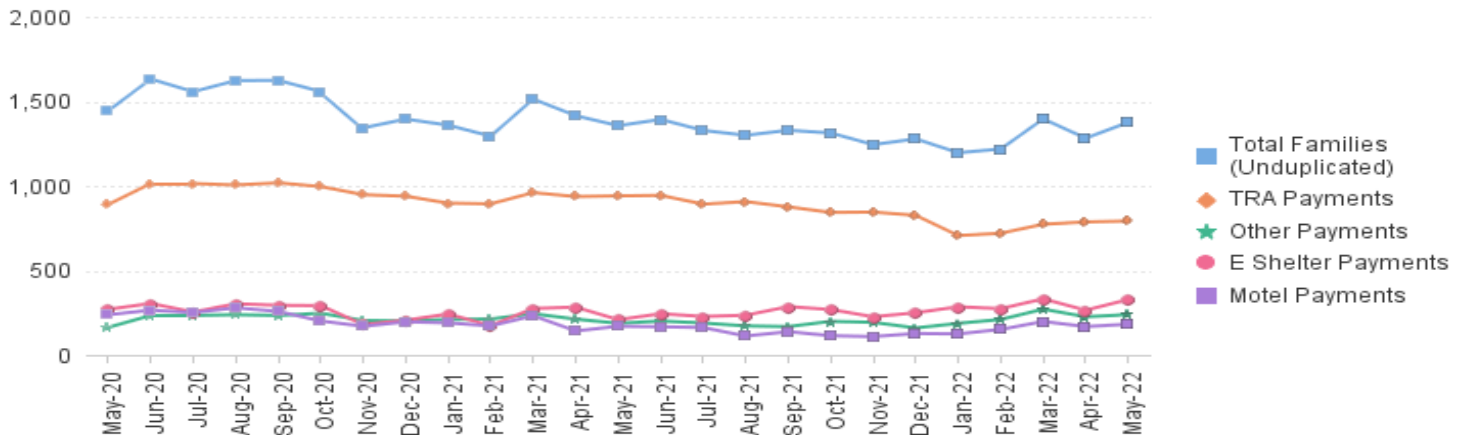
*=lower caseload % change

Total NJ SNAP
MAY 2022 by CountyData is derived from NJ MMIS Shared Data Warehouse.
Effective July 2013 this data query source was converted to the SDW.

* Age 60+ and People with a disability columns are independent subsets of total persons. An individual might appear in both columns

TABLE 8 :
EMERGENCY
ASSISTANCE
(STATEWIDE)TOTAL NUMBER OF ELIGIBLE FAMILIES RECEIVING EMERGENCY ASSISTANCE PAYMENTS
MAY 2020 THROUGH MAY 2022 - STATEWIDE

		Total WFNJ/EA Families (Undupl)	% CHNG (1 YR)	Temp Rent Asst. Payments (Undupl)	% CHNG (1 YR)	Motel Housing Payments (Undupl)	% CHNG (1 YR)	Shelter/Transitional Housing Payments (Undupl)	% CHNG (1 YR)	Other WFNJ/EA Payments (Undupl)	% CHNG (1 YR)
2020	MAY	1,444	-9.1%	890	7.9%	238	63.0%	270	-41.0%	163	-63.5%
	JUN	1,632	5.9%	1,014	23.8%	265	61.6%	305	-28.6%	234	-43.3%
	JUL	1,557	3.0%	1,014	33.2%	251	88.7%	254	-43.3%	234	-42.2%
	AUG	1,623	-3.0%	1,005	18.0%	279	75.5%	303	-40.9%	238	-46.3%
	SEP	1,624	-1.0%	1,018	22.1%	258	41.0%	294	-32.1%	234	-47.9%
	OCT	1,558	-14.5%	996	16.1%	201	-17.6%	292	-42.5%	247	-54.8%
	NOV	1,343	-13.6%	948	8.8%	170	19.7%	180	-52.9%	204	-50.6%
	DEC	1,395	-14.5%	939	9.8%	196	2.1%	206	-53.2%	201	-51.8%
2020	Average	1,560		970		220		303		274	
2021	JAN	1,359	-23.1%	898	-5.4%	190	-24.3%	242	-42.7%	210	-59.1%
	FEB	1,294	-19.1%	894	-4.1%	172	-5.0%	174	-52.3%	213	-47.9%
	MAR	1,513	-12.2%	960	-2.0%	232	19.0%	275	-32.3%	244	-47.2%
	APR	1,415	-2.7%	937	-2.4%	142	-7.2%	283	-15.3%	212	47.2%
	MAY	1,356	-6.1%	941	5.7%	170	-28.6%	209	-22.6%	187	14.7%
	JUN	1,393	-14.6%	944	-6.9%	167	-37.0%	244	-20.0%	201	-14.1%
	JUL	1,328	-14.7%	892	-12.0%	162	-35.5%	228	-10.2%	189	-19.2%
	AUG	1,299	-20.0%	907	-9.8%	112	-59.9%	235	-22.4%	172	-27.7%
	SEP	1,329	-18.2%	876	-13.9%	138	-46.5%	286	-2.7%	168	-28.2%
	OCT	1,313	-15.7%	843	-15.4%	114	-43.3%	269	-7.9%	199	-19.4%
	NOV	1,244	-7.4%	845	-10.9%	109	-35.9%	226	25.6%	193	-5.4%
	DEC	1,278	-8.4%	826	-12.0%	127	-35.2%	250	21.4%	160	-20.4%
2021	Average	1,343		897		153		243		196	
2022	JAN	1,196	-12.0%	706	-21.4%	125	-34.2%	285	17.8%	187	-11.0%
	FEB	1,218	-5.9%	720	-19.5%	151	-12.2%	274	57.5%	210	-1.4%
	MAR	1,396	-7.7%	773	-19.5%	198	-14.7%	332	20.7%	271	11.1%
	APR	1,282	-9.4%	787	-16.0%	168	18.3%	265	-6.4%	226	6.6%
	MAY	1,376	1.5%	792	-15.8%	182	7.1%	328	56.9%	239	27.8%
2022	Average To Date	1,294		756		165		297		227	

NJ STATEWIDE
Families Receiving Emergency Assistance
MAY 2020 THROUGH MAY 2022

WFNJ/EA data is derived from NJ MMIS Shared Data Warehouse.

Effective July 2013 this data query source was converted to the SDW.

* Effective Feb '11 Transitional Housing Payments were removed from 'Other EA Payments' and added to 'Shelter Payments'.

TABLE 9 :
EMERGENCY ASSISTANCE (BY COUNTY)
TOTAL NUMBER OF ELIGIBLE FAMILIES RECEIVING EMERGENCY ASSISTANCE PAYMENTS BY COUNTY (UNDULICATED CASES) FOR MAY 2022

County	TOTAL WFNJ/EA Families (Undupl)	% CHNG From MAY 21	Temp Rent Asst. Payments (Undupl)	Motel Housing Payments (Undupl)	Shelter/Transitional Housing Payments (Undupl)	Other WFNJ/EA Payments (Undupl)	SSI Receipients Receiving EA **
ATLANTIC	33	-50.0% *	32	0	0	5	34
BERGEN	43	-10.4%	30	0	11	4	45
BURLINGTON	67	21.8%	4	19	48	1	25
CAMDEN	55	22.2%	15	6	31	9	34
CAPE MAY	15	0%	7	8	0	0	10
CUMBERLAND	1	0%	0	0	1	1	0
ESSEX	152	15.2%	38	0	106	12	18
GLOUCESTER	14	133.3% Δ	1	0	7	8	6
HUDSON	238	18.4%	183	7	44	58	69
HUNTERDON	12	100.0% Δ	8	0	0	4	6
MERCER	121	61.3%	75	37	0	30	74
MIDDLESEX	130	-3.7%	79	30	5	43	61
MONMOUTH	27	575.0% Δ	0	5	23	0	55
MORRIS	10	-28.6% *	7	2	0	1	15
OCEAN	91	-14.2%	44	39	0	21	37
PASSAIC	220	-10.6%	175	8	26	24	14
SALEM	2	100.0% Δ	0	0	2	0	2
SOMERSET	57	-25.0%	44	7	2	14	55
SUSSEX	2	0%	0	2	0	0	1
UNION	70	-34.0% *	44	6	20	2	28
WARREN	16	-11.1%	6	6	2	2	2
NJ Total	1,376	1.5%	792	182	328	239	591

Δ=higher caseload % change

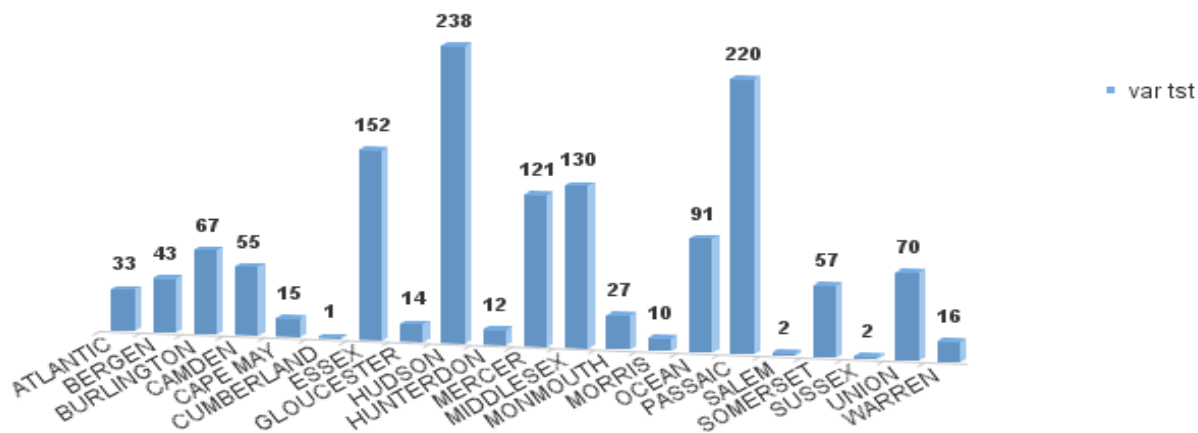
*=lower caseload % change

** SSI-EA includes pay codes 22 and 24, data is derived from NJ Division of Family Development FAMIS Report #FM430-03A

WFNJ/EA data is derived from NJ MMIS Shared Data Warehouse.

Effective July 2013 this data query source was converted to the SDW.

**Number WFNJ Families Receiving EA by County
MAY 2022**



**TABLE 10:
GENERAL
ASSISTANCE
PROGRAM**

**NUMBER OF EMPLOYABLE AND UNEMPLOYABLE RECIPIENTS
AND EMERGENCY ASSISTANCE PAYMENTS - STATEWIDE
MAY 2020 THROUGH MAY 2022**

	Total Cases						Emergency Assistance Cases			
	Employable	% Chng (1 Yr)	Unemployable	% Chng (1 Yr)	Total	% Chng (1 Yr)	Temporary Rental Assistance	Other GA-EA	Total	% Chng (1 Yr)
2020 MAY	6,936	66.9%	5,783	-6.9%	12,719	22.7%	929	909	1,838	-35.4%
JUN	7,585	87.4%	5,645	-8.2%	13,230	29.8%	916	1,255	2,171	4.1%
JUL	7,994	97.4%	5,520	-9.2%	13,514	33.4%	905	1,256	2,161	8.4%
AUG	8,119	86.7%	5,261	-16.0%	13,380	26.1%	875	1,188	2,063	-1.5%
SEP	8,176	93.4%	5,127	-17.2%	13,303	27.7%	849	1,333	2,182	1.1%
OCT	8,156	104.9%	4,988	-17.1%	13,144	31.5%	855	1,107	1,962	-11.2%
NOV	8,228	111.0%	4,822	-19.5%	13,050	32.0%	835	884	1,719	-17.2%
DEC	8,540	118.0%	4,691	-21.9%	13,231	33.3%	833	1,111	1,944	-4.7%
2020 AVERAGE	6,875		5,461		12,337		885	1,110	1,995	
2021 JAN	8,978	118.5%	4,553	-23.1%	13,531	34.9%	848	1,240	2,088	-1.8%
FEB	9,089	116.1%	4,407	-25.7%	13,496	33.2%	809	991	1,800	-10.3%
MAR	9,630	97.8%	4,421	-26.2%	14,051	29.4%	819	1,405	2,224	11.4%
APR	9,499	70.0%	4,288	-26.9%	13,787	20.4%	832	1,204	2,036	15.2%
MAY	9,630	38.8%	4,421	-23.6%	14,051	10.5%	819	491	1,310	-28.7%
JUN	9,007	18.7%	4,130	-32.8%	13,247	0.1%	794	1,108	1,902	-12.4%
JUL	9,090	13.7%	4,078	-26.1%	13,168	-2.6%	833	1,121	1,954	-9.6%
AUG	9,120	12.3%	3,982	-24.3%	13,102	-2.1%	753	1,091	1,844	-10.6%
SEP	9,045	10.6%	3,914	-23.7%	12,959	-2.6%	787	1,114	1,901	-12.9%
OCT	9,309	14.1%	3,875	-22.3%	13,184	0.3%	757	1,061	1,818	-7.3%
NOV	9,668	17.5%	3,853	-20.1%	13,521	3.6%	711	1,011	1,722	0.2%
DEC	10,040	17.6%	3,855	-17.8%	13,895	5.0%	742	1,071	1,813	-6.7%
2021 AVERAGE	9,342		4,148		13,499		792	1,076	1,868	
2022 JAN	10,239	14.0%	3,801	-16.5%	14,040	3.8%	677	947	1,624	-22.2%
FEB	10,687	17.6%	3,812	-13.5%	14,499	7.4%	727	1,126	1,853	2.9%
MAR	11,462	19.0%	3,870	-12.5%	15,332	9.1%	719	1,399	2,118	-4.8%
APR	11,810	24.3%	3,823	-10.8%	15,633	13.4%	742	1,196	1,938	-4.8%
MAY	12,039	25.0%	3,805	-13.9%	15,844	12.8%	750	1,152	1,902	45.2%
2022 AVERAGE TO DATE	11,247		3,822		15,070		723	1,164	1,887	

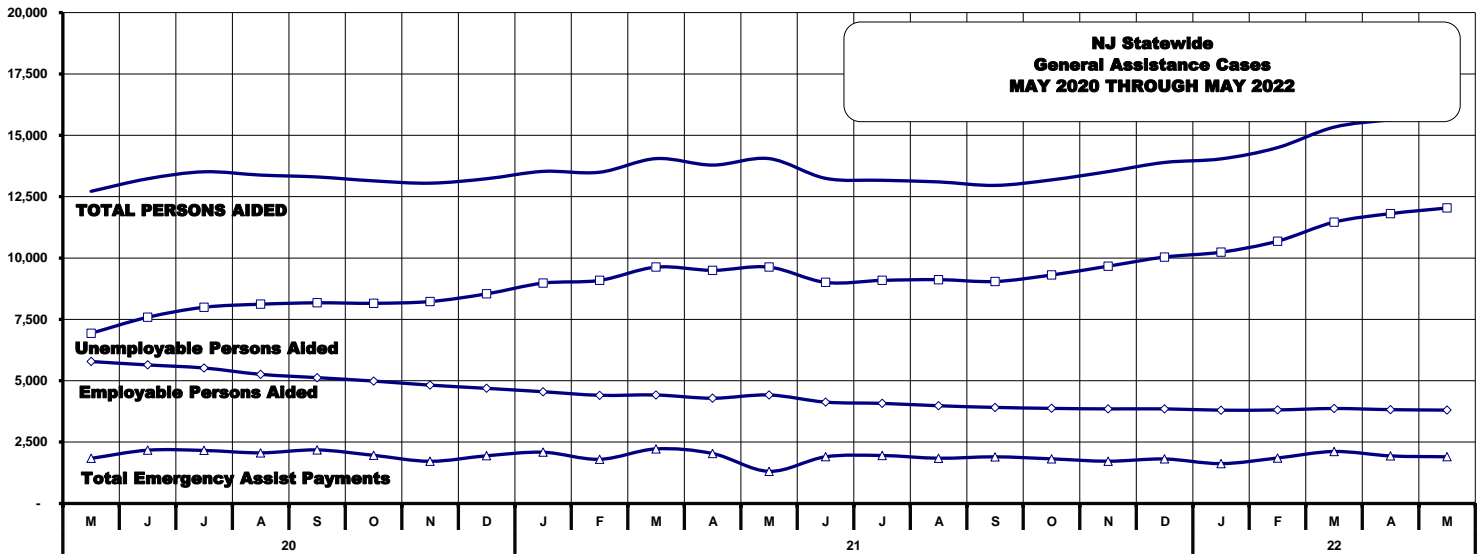


TABLE 11:
GENERAL
ASSISTANCE
PROGRAM

EMPLOYABLE AND UNEMPLOYABLE CASES
AND EMERGENCY ASSISTANCE CASES RECEIVING PAYMENTS BY COUNTY
MAY 2022

PROGRAM	Total Cases						Emergency Assistance Cases				
	Employable	% Chng (1 Yr)	Unemployable	% Chng (1 Yr)	Total	% Chng (1 Yr)	Temporary Rental Assistance	Other GA-EA	Total	% Chng (1 Yr)	
ATLANTIC	1,376	56.7%	193	-11.5%	1,569	43.2%	Δ	96	32	128	52.4%
BERGEN	395	15.2%	168	-21.5%	563	1.1%		79	19	98	78.2%
BURLINGTON	491	29.9%	178	-21.9%	669	10.4%		11	76	87	13.0%
CAMDEN	1,997	60.5%	501	-4.6%	2,498	41.2%		38	82	120	4.3%
CAPE MAY	141	12.8%	46	-16.4%	187	3.9%		13	45	58	41.5%
CUMBERLAND	345	3.0%	105	-4.5%	450	1.1%		0	6	6	100.0%
ESSEX	1,224	21.3%	291	-25.0%	1,515	8.4%		23	173	196	139.0%
GLOUCESTER	194	10.9%	112	-24.8%	306	-5.6%		1	22	23	-8.0% *
HUDSON	1,669	-14.5%	428	-23.6%	2,097	-16.6%	*	107	68	175	-2.8% *
HUNTERDON	167	138.6%	49	-16.9%	216	67.4%	Δ	12	28	40	300.0% Δ
MERCER	537	37.0%	241	-20.7%	778	11.8%		49	45	94	88.0%
MIDDLESEX	528	-0.6%	348	18.0%	876	6.1%		72	66	138	39.4%
MONMOUTH	323	27.2%	168	-2.3%	491	15.3%		1	104	105	144.2% Δ
MORRIS	246	79.6%	169	17.4%	415	47.7%	Δ	46	38	84	162.5% Δ
OCEAN	433	26.6%	204	-15.0%	637	9.5%		47	81	128	64.1%
PASSAIC	636	44.2%	277	-22.6%	913	14.3%		45	21	66	78.4%
SALEM	166	12.9%	33	-42.1%	199	-2.5%		0	2	2	0.0%
SOMERSET	211	44.5%	53	-14.5%	264	26.9%		35	36	71	29.1%
SUSSEX	52	-21.2%	16	-54.3%	68	-32.7%	*	0	8	8	-42.9% *
UNION	757	49.9%	163	0.0%	920	37.7%		59	174	233	23.9%
WARREN	151	-5.0%	62	-27.1%	213	-12.7%	*	16	26	42	5.0%
NJ TOTAL	12,039	25.0%	3,805	-13.9%	15,844	12.8%		750	1,152	1,902	45.2%

Δ= ↑ Caseload %

* = ↓ Caseload %

TABLE 12:
OFFICE OF
CHILD SUPPORT
SERVICES

OFFICE OF CHILD SUPPORT SERVICES
QUARTERLY PERFORMANCE REPORT
STATE SUMMARY
TITLE IV-D SOURCE COLLECTION REPORT

Comparison of Quarter-2 (FFY 2021 vs. FFY 2022)

COLLECTION SOURCE	TOTAL 1/1/2021 - 3/31/2021	% OF TOTAL COLLECTIONS	TOTAL 1/1/2022 - 3/31/2022	% OF TOTAL COLLECTIONS	DOLLAR CHANGE	% CHANGE
FEDERAL TAX	\$11,587,000	3.94%	\$18,598,245	6.65%	\$ 7,011,245	60.51%
STATE TAX	\$433,038	0.15%	\$314,280	0.11%	\$ (118,758)	-27.42%
UIB	\$34,833,880	11.86%	\$7,681,812	2.74%	\$ (27,152,068)	-77.95%
INC WITHHOLD	\$183,805,582	62.57%	\$182,025,127	65.04%	\$ (1,780,455)	-0.97%
FROM OTHER STATES	\$12,170,952	4.14%	\$10,397,345	3.72%	\$ (1,773,607)	-14.57%
ADMIN ENFORCEMENT	\$1,746,080	0.59%	\$5,251,118	2%	\$ 3,505,038	200.74%
OTHER	\$49,160,906	16.74%	\$55,594,425	19.86%	\$ 6,433,519	13.09%
TOTAL COLLECTIONS*	\$293,737,438	100%	\$279,862,352	100%	\$ (13,875,086)	-4.72%
DISBURSED COLLECTIONS**	\$260,626,114		\$241,423,424		\$ (19,202,690)	-7.37%

* Includes collections on both current support and arrears.

** Includes collections on both current support and arrears; also includes money sent to other states.

SOURCE: NJKiDS (Based on Federal Quarterly Report of Collections - OCSE-34A except Disbursed Collections)

Disbursed Collections obtained from Federal Data Report - OCSE-157, which is reported annually to Congress and used in the calculation of incentive dollars earned by each state.

TABLE 14:
OFFICE OF
CHILD SUPPORT
SERVICES

OFFICE OF CHILD SUPPORT SERVICES
STATE SUMMARY
TITLE IV-D REPORT OF CASES WITH ORDERS
Comparison of May (FFY 2021 vs. FFY 2022)

County	MAY 2021			MAY 2022			Increase or Decrease (-) from FFY 2021 to FFY 2022
	Total Cases	Cases with Orders	% of Cases with Orders	Total Cases	Cases with Orders	% of Cases with Orders	
Atlantic	10,548	9,840	93.3%	10,051	9,310	92.6%	-0.7%
Bergen	10,738	10,531	98.1%	10,276	10,016	97.5%	-0.6%
Burlington	11,647	11,070	95.0%	11,197	10,462	93.4%	-1.6%
Camden	25,838	24,669	95.5%	24,707	23,375	94.6%	-0.9%
Cape May	2,733	2,575	94.2%	2,607	2,471	94.8%	0.6%
Cumberland	10,872	10,497	96.6%	10,513	9,976	94.9%	-1.7%
Essex	36,510	32,191	88.2%	34,536	30,234	87.5%	-0.6%
Gloucester	9,386	9,089	96.8%	9,013	8,574	95.1%	-1.7%
Hudson	18,019	16,282	90.4%	17,150	15,391	89.7%	-0.6%
Hunterdon	1,290	1,213	94.0%	1,214	1,135	93.5%	-0.5%
Mercer	11,998	11,071	92.3%	11,440	10,327	90.3%	-2.0%
Middlesex	15,529	14,692	94.6%	15,189	14,156	93.2%	-1.4%
Monmouth	12,054	11,571	96.0%	11,238	10,621	94.5%	-1.5%
Morris	5,238	5,112	97.6%	5,038	4,842	96.1%	-1.5%
Ocean	13,149	12,726	96.8%	12,557	12,054	96.0%	-0.8%
Passaic	17,424	15,466	88.8%	16,378	14,393	87.9%	-0.9%
Salem	3,815	3,669	96.2%	3,622	3,437	94.9%	-1.3%
Somerset	4,056	3,865	95.3%	3,893	3,648	93.7%	-1.6%
Sussex	2,341	2,310	98.7%	2,268	2,222	98.0%	-0.7%
Union	16,508	15,807	95.8%	16,000	15,163	94.8%	-1.0%
Warren	2,637	2,512	95.3%	2,275	2,175	95.6%	0.3%
NJ TOTALS	242,330	226,758	93.6%	231,162	213,982	92.6%	-1.0%

SOURCE: NJKIDS (Based on Federal Performance Measures - OCSE-157)

**TABLE 15:
OFFICE OF
CHILD SUPPORT
SERVICES**

**OFFICE OF CHILD SUPPORT SERVICES
STATE SUMMARY
TITLE IV-D COLLECTIONS ON CURRENT SUPPORT**
Comparison of May (FFY 2021 vs. FFY 2022)

County	MAY 2021			MAY 2022			Increase or Decrease (-) from FFY 2021 to FFY 2022
	Total Current Support Due	Total Current Support Distributed	Total Collection Rate	Total Current Support Due	Total Current Support Distributed	Total Collection Rate	
Atlantic	\$3,394,629	\$2,275,231	67.0%	\$3,422,863	\$2,126,081	62.1%	-4.9%
Bergen	\$7,605,097	\$5,790,580	76.1%	\$7,521,002	\$5,505,585	73.2%	-2.9%
Burlington	\$5,077,661	\$3,624,380	71.4%	\$5,035,081	\$3,349,286	66.5%	-4.9%
Camden	\$7,229,232	\$4,568,212	63.2%	\$7,158,352	\$4,146,650	57.9%	-5.3%
Cape May	\$974,961	\$673,709	69.1%	\$979,858	\$650,209	66.4%	-2.7%
Cumberland	\$2,742,037	\$1,711,396	62.4%	\$2,743,215	\$1,596,022	58.2%	-4.2%
Essex	\$9,643,171	\$6,023,723	62.5%	\$9,507,963	\$5,476,773	57.6%	-4.9%
Gloucester	\$3,777,565	\$2,624,366	69.5%	\$3,698,726	\$2,469,675	66.8%	-2.7%
Hudson	\$6,550,143	\$4,550,388	69.5%	\$6,553,461	\$4,241,837	64.7%	-4.7%
Hunterdon	\$1,115,254	\$896,054	80.3%	\$1,037,466	\$859,337	82.8%	2.5%
Mercer	\$3,644,548	\$2,433,127	66.8%	\$3,595,239	\$2,234,580	62.2%	-4.6%
Middlesex	\$6,878,897	\$4,934,478	71.7%	\$6,719,333	\$4,507,159	67.1%	-4.7%
Monmouth	\$6,424,176	\$4,757,321	74.1%	\$6,118,624	\$4,380,942	71.6%	-2.5%
Morris	\$3,979,051	\$2,996,878	75.3%	\$3,912,254	\$2,894,744	74.0%	-1.3%
Ocean	\$5,864,037	\$4,364,102	74.4%	\$5,791,252	\$4,115,975	71.1%	-3.3%
Passaic	\$5,895,186	\$3,889,008	66.0%	\$5,726,643	\$3,584,256	62.6%	-3.4%
Salem	\$996,290	\$624,154	62.6%	\$991,216	\$587,993	59.3%	-3.3%
Somerset	\$2,672,753	\$2,190,684	82.0%	\$2,562,386	\$2,056,628	80.3%	-1.7%
Sussex	\$1,609,534	\$1,256,871	78.1%	\$1,562,510	\$1,188,861	76.1%	-2.0%
Union	\$6,235,782	\$4,407,697	70.7%	\$6,303,701	\$4,241,068	67.3%	-3.4%
Warren	\$1,160,754	\$859,780	74.1%	\$1,114,301	\$823,936	73.9%	-0.1%
NJ TOTALS	\$93,470,759	\$65,452,139	70.0%	\$92,055,446	\$61,037,598	66.3%	-3.7%

SOURCE: NJKIDS (Based on Federal Performance Measures - OCSE-157)

TABLE 16:
OFFICE OF
CHILD SUPPORT
SERVICES

OFFICE OF CHILD SUPPORT SERVICES
STATE SUMMARY
TITLE IV-D CASES ARREARS COLLECTION REPORT
Comparison of May (FFY 2021 vs. FFY 2022)

County	MAY 2021			MAY 2022			Increase or Decrease (-) from FFY 2021 to FFY 2022
	Total Cases with Arrears	Total Amount Collected	Average Arrears Collection per Case	Total Cases with Arrears	Total Amount Collected	Average Arrears Collection per Case	
Atlantic	6,556	\$799,501	\$121.95	6,212	\$796,538	\$128.23	\$6.28
Bergen	6,749	\$1,104,982	\$163.73	6,522	\$1,362,108	\$208.85	\$45.12
Burlington	7,257	\$974,300	\$134.26	6,967	\$1,166,624	\$167.45	\$33.19
Camden	15,374	\$1,918,648	\$124.80	14,250	\$1,999,621	\$140.32	\$15.53
Cape May	1,794	\$220,722	\$123.03	1,683	\$242,679	\$144.19	\$21.16
Cumberland	6,805	\$828,711	\$121.78	6,180	\$832,054	\$134.64	\$12.86
Essex	20,274	\$2,774,876	\$136.87	18,675	\$2,820,448	\$151.03	\$14.16
Gloucester	6,085	\$824,483	\$135.49	5,656	\$854,208	\$151.03	\$15.53
Hudson	10,917	\$1,471,012	\$134.75	10,415	\$1,494,538	\$143.50	\$8.75
Hunterdon	745	\$113,577	\$152.45	730	\$167,389	\$229.30	\$76.85
Mercer	7,490	\$981,183	\$131.00	6,893	\$1,046,312	\$151.79	\$20.79
Middlesex	9,656	\$1,335,380	\$138.30	9,101	\$1,479,765	\$162.59	\$24.30
Monmouth	7,536	\$1,389,009	\$184.32	6,834	\$1,094,809	\$160.20	-\$24.12
Morris	3,399	\$599,243	\$176.30	3,249	\$675,647	\$207.96	\$31.66
Ocean	8,073	\$1,146,528	\$142.02	7,585	\$1,241,837	\$163.72	\$21.70
Passaic	10,518	\$1,498,537	\$142.47	9,653	\$1,508,479	\$156.27	\$13.80
Salem	2,317	\$240,391	\$103.75	2,097	\$224,305	\$106.96	\$3.21
Somerset	2,503	\$387,209	\$154.70	2,391	\$445,761	\$186.43	\$31.73
Sussex	1,500	\$244,792	\$163.19	1,446	\$259,274	\$179.30	\$16.11
Union	10,282	\$1,592,418	\$154.87	9,796	\$1,567,081	\$159.97	\$5.10
Warren	1,604	\$186,344	\$116.17	1,446	\$267,280	\$184.84	\$68.67
NJ TOTALS	147,434	\$20,631,846	\$139.94	137,781	\$21,546,757	\$156.38	\$16.44

SOURCE: OCSE-157 Child Support Enforcement Annual Data Report

Table 17**WORK FIRST NEW JERSEY STATISTICAL SUMMARY****WFNJ****MAY 2022**

COUNTY	EMPLOYMENT DIRECTED ACTIVITIES			EMPLOYED OPEN (WFNJ RECIPIENT)	SUPPORT SERVICES ON ACTIVE CASE		CLOSED FOR EMPLOYMENT THIS MONTH	POST ASSISTANCE CHILD CARE
	CWEP	ALL OTHER TRAINING	JOB SEARCH		CHILD CARE	TRAINING REL. EXPENSES		
ATLANTIC	7	76	56	43	3	75	12	31
BERGEN	2	0	0	7	16	0	2	4
BURLINGTON	122	28	80	21	12	10	4	8
CAMDEN	38	123	5	33	38	1	8	18
CAPE MAY	0	13	12	7	1	1	3	4
CUMBERLAND	0	27	27	13	3	56	5	2
ESSEX	40	156	5	57	56	64	11	43
GLOUCESTER	0	5	0	12	8	0	1	1
HUDSON	1	276	22	78	93	33	16	14
HUNTERDON	0	0	0	0	2	0	3	0
MERCER	20	233	0	47	101	24	8	25
MIDDLESEX	0	47	31	23	9	0	9	11
MONMOUTH	0	16	3	17	23	3	3	18
MORRIS	0	2	0	0	2	0	0	1
OCEAN	2	170	0	10	17	2	3	10
PASSAIC	1	38	0	18	28	10	10	8
SALEM	0	13	0	4	4	2	1	0
SOMERSET	6	15	9	22	14	16	3	3
SUSSEX	0	0	1	0	0	0	1	0
UNION	0	62	0	4	10	0	3	1
WARREN	0	4	1	10	6	0	1	3
STATE TOTAL	239	1304	252	426	446	297	107	205

Data is derived from NJ Division of Family Development's FAMIS Reports RM064-01 & RM703-51, AdHoc Reports 5549 & 5598 and SDW Report WR00022WZ_CC

**DIVISION OF FAMILY DEVELOPMENT CURRENT PROGRAM STATISTICS
MAY 2022**

ACRONYMS

EMERGENCY ASSISTANCE (EA) - Payments to those eligible for WFNJ/TANF or WFNJ/GA, authorized during the 30 consecutive days immediately following the emergency (defined as a substantial loss of shelter, food, clothing, or household furnishings by fire, flood or other similar disaster) or if eligible individual or family is in an imminent or actual state of homelessness.

NJ SNAP - Formerly the Food Stamp Program, now known as NJ SNAP (NJ Supplemental Nutrition Assistance Program) authorized by Congress as a nutritional supplement program to provide low income households with more food of greater variety and better nutrition. Program eligibility is based on household income, resources, and expenses for medical, shelter, and dependent care. CWA staff refers certain recipients to the New Jersey Department of Labor for participation in the Food Stamp Employment and Training Program.

FAMIS: Family Assistance Management Information System

GAAS: General Assistance Automated System

NJKIDS: New Jersey Kids Deserve Support (Child Support Information Management System)

NJ MMIS SHARED DATA WAREHOUSE: The Shared Data Warehouse (SDW) is the repository for New Jersey's DFD and Medicaid data. Since 2003, OptumInsight has administered the SDW and provided access to the data through a reporting tool known as Business Objects.

OMEGA: Online Management of Economic Goal Achievement

SSI-EA: Supplemental Security Income-Emergency Assistance

WFNJ: Work First New Jersey - Fully implemented July 1, 1997, this is New Jersey's welfare reform program which responds to the requirements of the Federal Personal Responsibility and Work Opportunity Reconciliation Act (**PRWORA**) of 1996. PRWORA established Temporary Assistance for Needy Families (**TANF**) as the replacement for AFDC cash assistance. WFNJ includes two segments, **WFNJ/TANF** for families with children, and **WFNJ/GA** (General Assistance) for single adults and couples without dependent children. WFNJ emphasizes achieving self-sufficiency and limits lifetime receipt of financial assistance to a total of five years.

**DIVISION OF FAMILY DEVELOPMENT CURRENT PROGRAM STATISTICS
MAY 2022**

EXPLANATORY NOTES

The Department of Human Services Division of Family Development provides basic income and an opportunity to achieve self-sufficiency for individuals and families served by the Division's programs. The Division provides leadership, direction and supervision to those public agencies responsible for administering those programs and plans for and develops policies to promote self-sufficiency.

WFNJ STATISTICAL SUMMARY (TABLE 17)

Employment Directed Activities (EDA) - From Activities Summary Report (OMEGA report # RM064). Unduplicated count of persons participating in Community Work Experience Program (CWEP), All Other Training, or Job Search.

Number of Persons Employed This Month, Still Receiving TANF - Individuals with open "empl" activity on OMEGA. Ad hoc report.

Participants Receiving Child Care Services - From Issuance Disbursement Summary (OMEGA report # RM703). Total number of active participants who show receipt of Child Care.

Number of Persons Closed on FAMIS Due to Employment - From FAMIS report #5549-RM-2

Post TANF and Receiving Child Care - Persons no longer in receipt of TANF but still receiving child care. From Share Data Warehouse Child Care case count based on Child Care payments (SDW report WR00022WZ_CC).