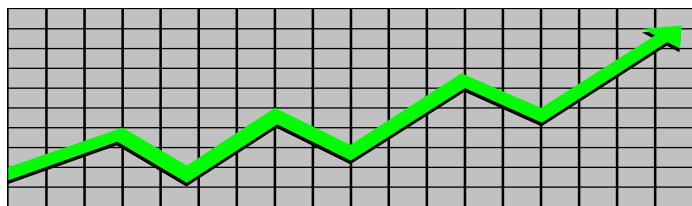


State of New Jersey
Department of Human Services
Division of Family Development

CURRENT PROGRAM STATISTICS



November 2018
Natasha Johnson, Director

DIVISION OF FAMILY DEVELOPMENT CURRENT PROGRAM STATISTICS

NOVEMBER 2018

TABLE OF CONTENTS

HIGHLIGHTS:

WFNJ/TANF	ii
NJ SNAP	ii
EMERGENCY ASSISTANCE	ii
GENERAL ASSISTANCE	iii
GA Emergency Assistance.....	iii
GA Program.....	iii
CHILD SUPPORT SERVICES	iii
WORK FIRST NEW JERSEY (WFNJ)	iii
STATISTICS- BY STATE & COUNTY	1
Table 1: WFNJ/TANF Families & Persons (NJ Statewide) November 2016 to 2018.....	1
Table 2: WFNJ/TANF Families (by County)- November 2018.....	2
Table 2B: WFNJ/TANF Persons, Adults, & Children (by County)- November 2018.....	3
Table 3: TANF Work Participation Rates Over 12 Month Period (by County)- November 2018....	4
Table 4: TANF Work Participation Rates Over 12 Month Period (NJ Statewide) November 2018.	5
Table 5: NJ SNAP Households/Persons (NJ Statewide) November 2016 to 2018.....	6
Table 6: NJ SNAP Recipient Trends (NJ Statewide) November 2016 to 2018.....	7
Table 7: NJ SNAP Households/Persons (by County)- November 2018.....	8
Table 8: Emergency Assistance Program (NJ Statewide) November 2016 to 2018.....	9
Table 9: Emergency Assistance Program (by County)- November 2018.....	10
Table 10: General Assistance Program (NJ Statewide) November 2016 to 2018.....	11
Table 11: General Assistance Program (by County)- November 2018.....	12
Table 12: Child Support Services Distributions (NJ Statewide) FFY 2018.....	13
Table 13: Child Support Services Paternities Established- November 2018.....	14
Table 14: Child Support Services Cases With Orders- November 2018.....	15
Table 15: Child Support Services Collections On Current Support- November 2018.....	16
Table 16: Child Support Services Cases With Payments On Arrears- November 2018.....	17
Table 17: WFNJ Statistical Summary- November 2018.....	18
ACRONYMS	19
EXPLANATORY NOTES	20
WFNJ Statistical Summary (Table 17).....	20

DIVISION OF FAMILY DEVELOPMENT CURRENT PROGRAM STATISTICS NOVEMBER 2018

Each month the Division of Family Development publishes its program statistics for: WFNJ/TANF, NJ SNAP, Emergency Assistance, General Assistance, and Child Support Services. When possible, information is provided separately for children and adults. Many tables also provide trend data with information broken down by county for readers to consider. This report is compiled and prepared by The Bureau of Research & Reporting.

WFNJ/TANF

- As of the end of November, the TANF caseload had decreased by 3,358 cases, from 15,684 in November 2017 to 12,326 in November 2018, a decrease of 21.4%.
- The county where the family caseload percentage increased since November 2017 was Hunterdon (21.7%).
- The counties with caseloads that decreased the most since November 2017 were Atlantic (-26.6%), Sussex (-28.6%) and Passaic (-30.4%).
- Of the WFNJ/TANF cases, 4,180 or 33.9% were child-only in November 2018.
- The counties with the most child-only cases were Camden (674), Essex (570) and Hudson (447).
- Essex (5,482), Camden (4,050), Hudson (3,786), Passaic (3,503) and Atlantic (2,015) counties had the greatest number of persons receiving TANF in November 2018.

NJ SNAP (formerly FOOD STAMPS)

- In November 2018, there were 360,812 households receiving NJ SNAP benefits. The number of NJ SNAP households decreased by 24,407 or 6.3%, since November 2017.
- There were 716,971 persons receiving NJ SNAP benefits as of November 2018, a decrease of 50,893 or 6.6% since November 2017.
- The counties having the highest caseload decrease since November 2017 are Ocean (-9.9%), Sussex (-10.0%) and Atlantic (-10.4%).

EMERGENCY ASSISTANCE

- There were 1,614 TANF families receiving Emergency Assistance (EA) in November 2018, a decrease of 176 or 9.8% since November 2017.
- In November 2018, EA payments were made for 425 SSI recipients.

DIVISION OF FAMILY DEVELOPMENT CURRENT PROGRAM STATISTICS NOVEMBER 2018

- There were 1,921 GA cases with Emergency Assistance payments in November 2018, a decrease of 70 or 3.5% since November 2017.
- The counties that showed the highest percent increase in Emergency Assistance payments were Somerset (31.6%), Monmouth (64.3%) and Cumberland (300.0%).
- The counties that showed the highest percent decrease in Emergency Assistance payments were Essex (-21.8%), Sussex (-25.0%) and Salem (-81.3%).

GENERAL ASSISTANCE

- The total numbers of cases receiving GA has decreased from 13,028 to 10,963 since November 2017, a decrease of 15.9%.
- There were 4,314 Employable GA and 6,649 Unemployable GA cases in November 2018.
- The counties that showed a percent increase for GA cases were Warren (1.5%), Somerset (16.1%) and Monmouth (22.7%) since November 2017.
- The counties that showed the highest percent decrease for GA cases since November 2017 were Atlantic (-20.7%), Sussex (-23.5%) and Camden (-25.0%).
- In November 2018, GA cases showed a 3.0% decrease since October 2018.

CHILD SUPPORT SERVICES (Quarterly Report)

- The total collection for the Child Support Services Program was about \$298 million from July 2018 to September 2018, a decrease of 1.6 percent over the same period for FFY 2017.
- Total distributions decreased 2.6% from September 2017.

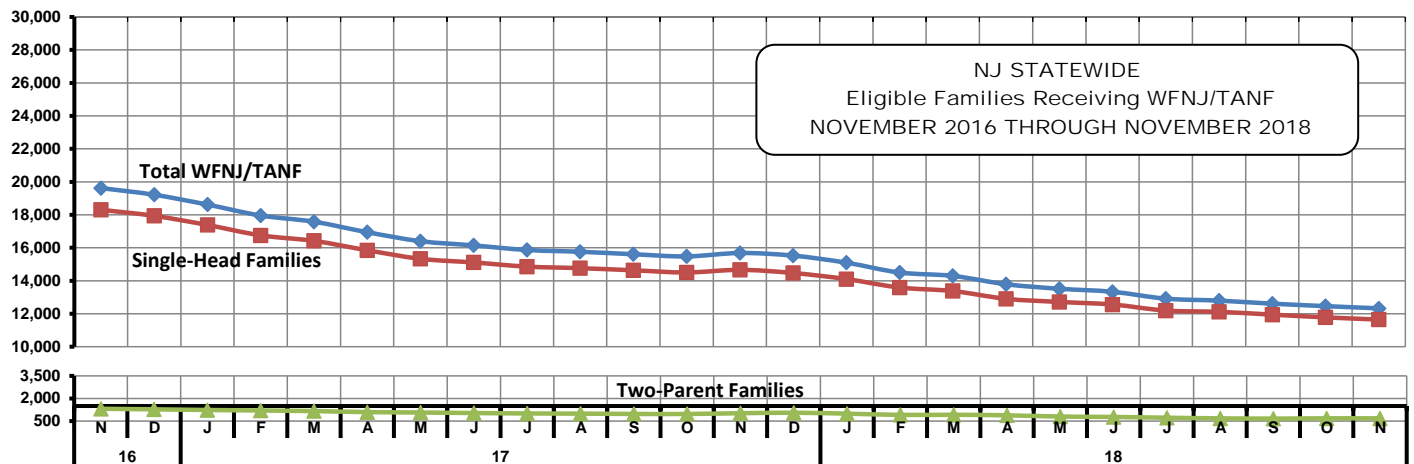
WORK FIRST NEW JERSEY (WFNJ)

- During the report month of November 2018, there were 1,340 families in which at least one member was employed and an additional 257 families whose WFNJ assistance cases were closed due to employment - related earnings.
- The three counties with the greatest number of employed active WFNJ recipients were: Essex (335), Camden (192) and Hudson (130).
- There were 1,526 former TANF cases receiving post-TANF support in the form of child care assistance.

TABLE 1: WFNJ/TANF PROGRAM

STATEWIDE NUMBER OF APPLICATIONS AND TERMINATIONS DURING NOVEMBER 2018
 NUMBER OF ELIGIBLE FAMILIES & PERSONS RECEIVING WFNJ/TANF FOR NOVEMBER 2018

NOVEMBER 2016 THROUGH NOVEMBER 2018												
		Cases Added	Cases Closed	Child-Only Cases ‡	Total Singl-Head Families	2- Parent Families	Total WFNJ/TANF Families	%CHNG (1 Yr.)	%CHNG (1 Yr.) Total Persons Adults Children			
2016	NOV	1,614	2,222	5,766	18,305	1,317	19,622	(23.7)	48,737	(25.3)	15,173	33,564
	DEC	1,592	2,088	5,762	17,937	1,280	19,217	(23.7)	47,656	(25.2)	14,735	32,921
	2016 Average	1,788	2,366	6,117	20,051	1,433	21,484		53,508		16,800	36,709
2017	JAN	1,479	2,069	5,658	17,384	1,236	18,620	(23.7)	46,466	(24.6)	14,198	32,268
	FEB	1,436	2,167	5,591	16,753	1,203	17,956	(23.6)	44,778	(24.1)	13,568	31,210
	MAR	1,440	1,861	5,516	16,420	1,162	17,582	(23.8)	43,992	(23.6)	13,228	30,764
	APR	1,328	2,018	5,416	15,850	1,096	16,946	(25.0)	42,479	(24.8)	12,626	29,853
	MAY	1,295	1,835	5,222	15,332	1,069	16,401	(24.8)	41,214	(24.0)	12,248	28,966
	JUN	1,440	1,750	5,115	15,110	1,034	16,144	(24.3)	40,521	(23.3)	12,063	28,458
	JUL	1,431	1,780	5,042	14,859	1,007	15,866	(24.2)	39,840	(23.3)	11,831	28,009
	AUG	1,446	1,617	5,001	14,764	995	15,759	(24.0)	39,673	(22.9)	11,753	27,920
	SEP	1,525	1,747	4,963	14,635	974	15,609	(23.6)	39,270	(22.4)	11,620	27,650
	OCT	1,534	1,704	4,876	14,504	972	15,476	(23.2)	38,907	(22.1)	11,572	27,335
	NOV	1,539	1,581	4,885	14,662	1,022	15,684	(20.1)	39,534	(18.9)	11,821	27,713
	DEC	1,434	1,686	4,850	14,470	1,054	15,524	(19.2)	39,246	(17.6)	11,728	27,518
2017 Average	1,444	1,818	5,178	15,395	1,069	16,464		41,327		12,355	28,972	
2018	JAN	1,289	1,706	4,770	14,103	994	15,097	(18.9)	38,222	(17.7)	11,321	26,901
	FEB	1,226	1,885	4,695	13,589	910	14,499	(19.3)	36,645	(18.2)	10,714	25,931
	MAR	1,097	1,398	4,670	13,377	918	14,295	(18.7)	35,943	(18.3)	10,543	25,400
	APR	1,050	1,548	4,610	12,905	883	13,788	(18.6)	34,557	(18.6)	10,061	24,496
	MAY	1,177	1,506	4,514	12,715	800	13,515	(17.6)	33,791	(18.0)	9,801	23,990
	JUN	1,287	1,555	4,483	12,558	773	13,331	(17.4)	33,203	(18.1)	9,621	23,582
	JUL	1,111	1,517	4,389	12,192	723	12,915	(18.6)	32,023	(19.6)	9,249	22,774
	AUG	1,241	1,440	4,349	12,114	681	12,795	(18.8)	32,848	(17.2)	9,127	23,721
	SEP	1,341	1,600	4,287	11,944	665	12,609	(19.2)	31,154	(20.7)	8,987	22,167
	OCT	1,318	1,455	4,222	11,778	683	12,461	(19.5)	31,066	(20.2)	8,922	22,144
	NOV	1,191	1,381	4,180	11,645	681	12,326	(21.4)	30,734	(22.3)	8,827	21,907
	2018 AVG to date	1,212	1,545	4,470	12,629	792	13,421		33,653		9,743	23,910



Data is derived from NJ MMIS Shared Data Warehouse Issuance files.
 Effective July 2013 this data query source was converted to the SDW

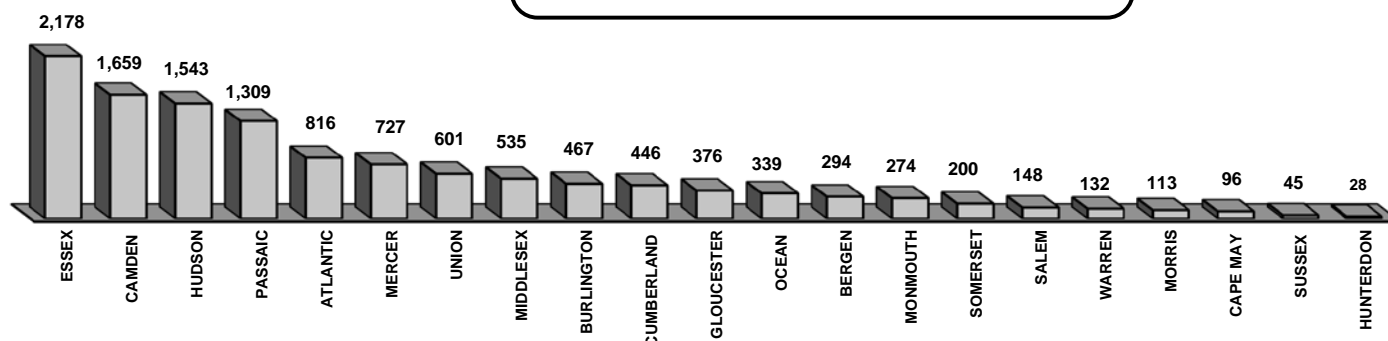
‡ Child-only cases are defined as families in which no eligible adult receives TANF program benefits, yet the family continues to be headed by at least one of the biological parents, or grandparents, or other appropriate adult.

Table 2
WFNJ/TANF
PROGRAM

NUMBER OF APPLICATIONS AND TERMINATIONS BY COUNTY DURING NOVEMBER 2018
NUMBER OF ELIGIBLE FAMILIES RECEIVING WFNJ/TANF REPORTED FOR NOVEMBER 2018

County	Cases Added	Cases Closed**	Child-		Total		Total		% Chng (3 Mon)	% Chng (1 Yr)
			Only Cases ‡	1-Adult Cases	Singl-Head Families	2-Parent Families	WFNJ/TANF Families			
ATLANTIC	53	76	328	438	766	50	816	(5.3)	(26.6)	*
BERGEN	25	43	78	197	275	19	294	(6.4)	(17.2)	
BURLINGTON	47	69	152	286	438	29	467	(5.5)	(18.6)	
CAMDEN	116	132	674	920	1,594	65	1,659	0.7	(22.2)	
CAPE MAY	15	9	46	46	92	4	96	(2.0)	(22.6)	
CUMBERLAND	41	56	193	220	413	33	446	(4.7)	(18.9)	
ESSEX	326	307	570	1,502	2,072	106	2,178	0.0	(23.6)	
GLOUCESTER	42	33	141	223	364	12	376	(0.3)	(18.8)	
HUDSON	138	173	447	999	1,446	97	1,543	0.6	(15.7)	
HUNTERDON	3	2	11	16	27	1	28	3.7	21.7	Δ
MERCER	60	82	281	408	689	38	727	(4.5)	(19.8)	
MIDDLESEX	45	54	229	280	509	26	535	(2.6)	(19.9)	
MONMOUTH	16	26	111	155	266	8	274	0.0	(4.5)	Δ
MORRIS	16	9	32	64	96	17	113	(4.2)	(20.4)	
OCEAN	34	37	101	215	316	23	339	(1.2)	(20.6)	
PASSAIC	98	128	411	835	1,246	63	1,309	(4.4)	(30.4)	*
SALEM	23	21	61	78	139	9	148	(9.2)	(21.7)	
SOMERSET	19	25	62	130	192	8	200	(2.4)	(16.0)	
SUSSEX	3	10	21	19	40	5	45	(8.2)	(28.6)	*
UNION	50	66	196	347	543	58	601	(6.1)	(15.8)	
WARREN	21	23	35	87	122	10	132	(4.3)	(15.4)	Δ
NJ TOTAL	1,191	1,381	4,180	7,465	11,645	681	12,326	(2.2)	(21.4)	

Total WFNJ/TANF Families
NOVEMBER 2018
By County



Data is derived from NJ MMIS Shared Data Warehouse Issuance files.

Effective July 2013 this data query source was converted to the SDW

‡ Child-only cases are defined as families in which no eligible adult receives TANF program benefits, yet the family continues to be headed by at least one of the biological parents, or grandparents, or other appropriate adult

** "Cases closed" include cases that received a benefit in the prior month, but did not receive any TANF benefit for the report month.

"Δ=higher caseload % change

"*=lower caseload % change

Table 2B

WFNJ/TANF

PROGRAM

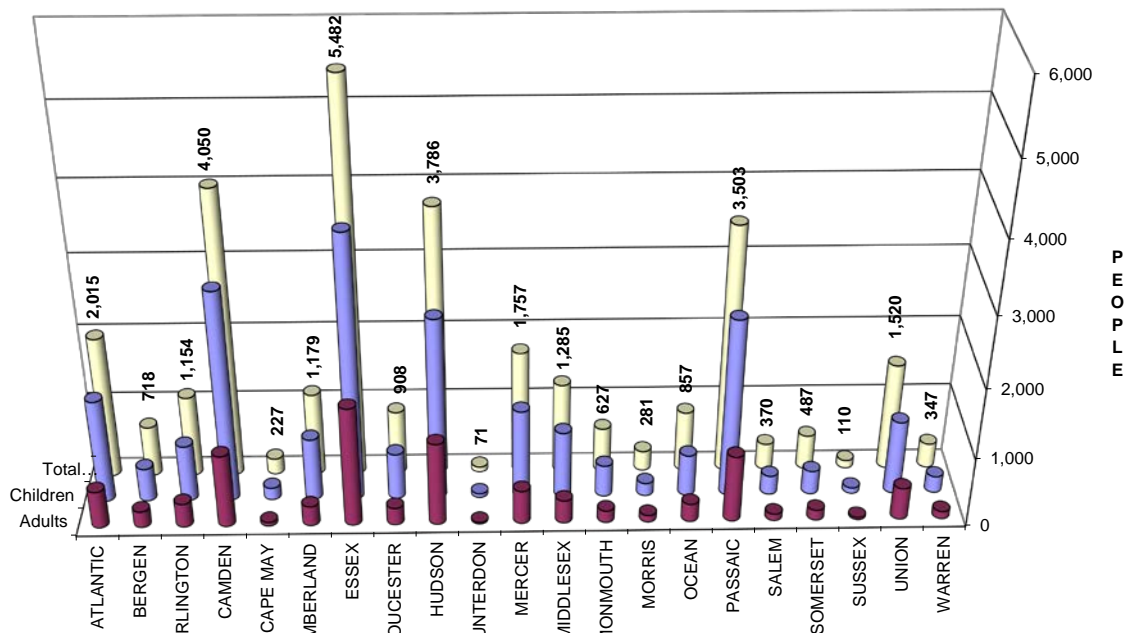
Δ= ↑ Caseload %

*= ↓ Caseload %

NUMBER OF PARTICIPATING PERSONS, ADULTS, AND CHILDREN BY COUNTY FOR NOVEMBER 2018

PERSONS

County	Adults	Children	Child/Adult Ratio	Total Persons	% Chng (1 Yr)	Persons Per Case
ATLANTIC	538	1,477	2.75	2,015	(29.3) *	2.47
BERGEN	235	483	2.06	718	(15.1)	2.44
BURLINGTON	344	810	2.35	1,154	(16.5)	2.47
CAMDEN	1,050	3,000	2.86	4,050	(24.4)	2.44
CAPE MAY	54	173	3.20	227	(30.6) *	2.36
CUMBERLAND	286	893	3.12	1,179	(20.7)	2.64
ESSEX	1,714	3,768	2.20	5,482	(23.7)	2.52
GLOUCESTER	247	661	2.68	908	(18.8)	2.41
HUDSON	1,193	2,593	2.17	3,786	(16.9)	2.45
HUNTERDON	18	53	2.94	71	16.4 Δ	2.54
MERCER	484	1,273	2.63	1,757	(18.7)	2.42
MIDDLESEX	332	953	2.87	1,285	(21.0)	2.40
MONMOUTH	171	456	2.67	627	(2.2) Δ	2.29
MORRIS	98	183	1.87	281	(24.7)	2.49
OCEAN	261	596	2.28	857	(20.6)	2.53
PASSAIC	961	2,542	2.65	3,503	(30.1) *	2.68
SALEM	96	274	2.85	370	(20.4)	2.50
SOMERSET	146	341	2.34	487	(14.1) Δ	2.44
SUSSEX	29	81	2.79	110	(26.7)	2.44
UNION	463	1,057	2.28	1,520	(19.4)	2.53
WARREN	107	240	2.24	347	(14.5)	2.63
NJ TOTAL	8,827	21,907	2.48	30,734	(22.3)	2.49



Data is derived from NJ MMIS Shared Data Warehouse Issuance files.
Effective July 2013 this data query source was converted to the SDW

TABLE 3

**Work Participation Rates Achieved Over 12 Month Period
Ending With NOVEMBER 2018**

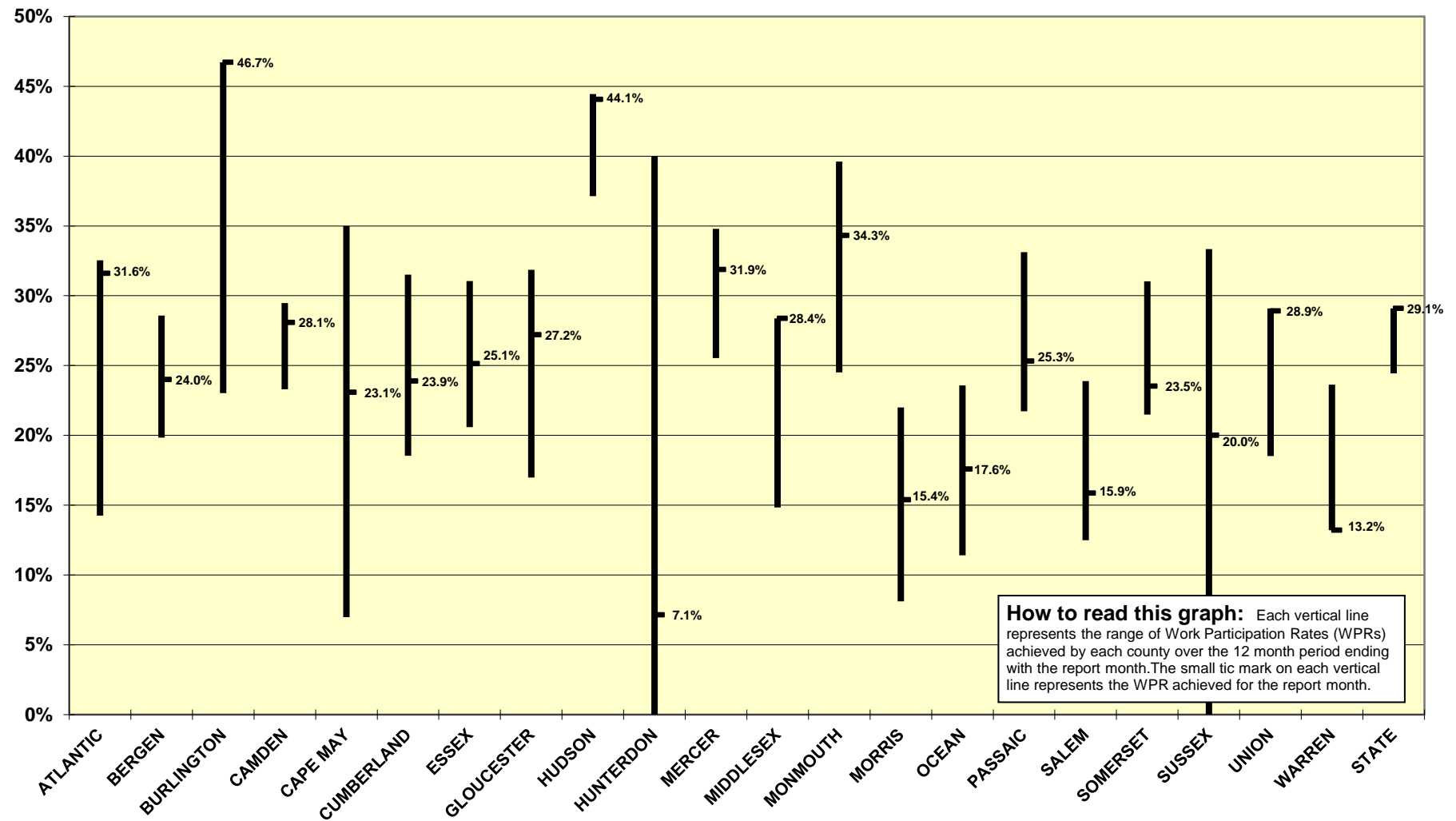
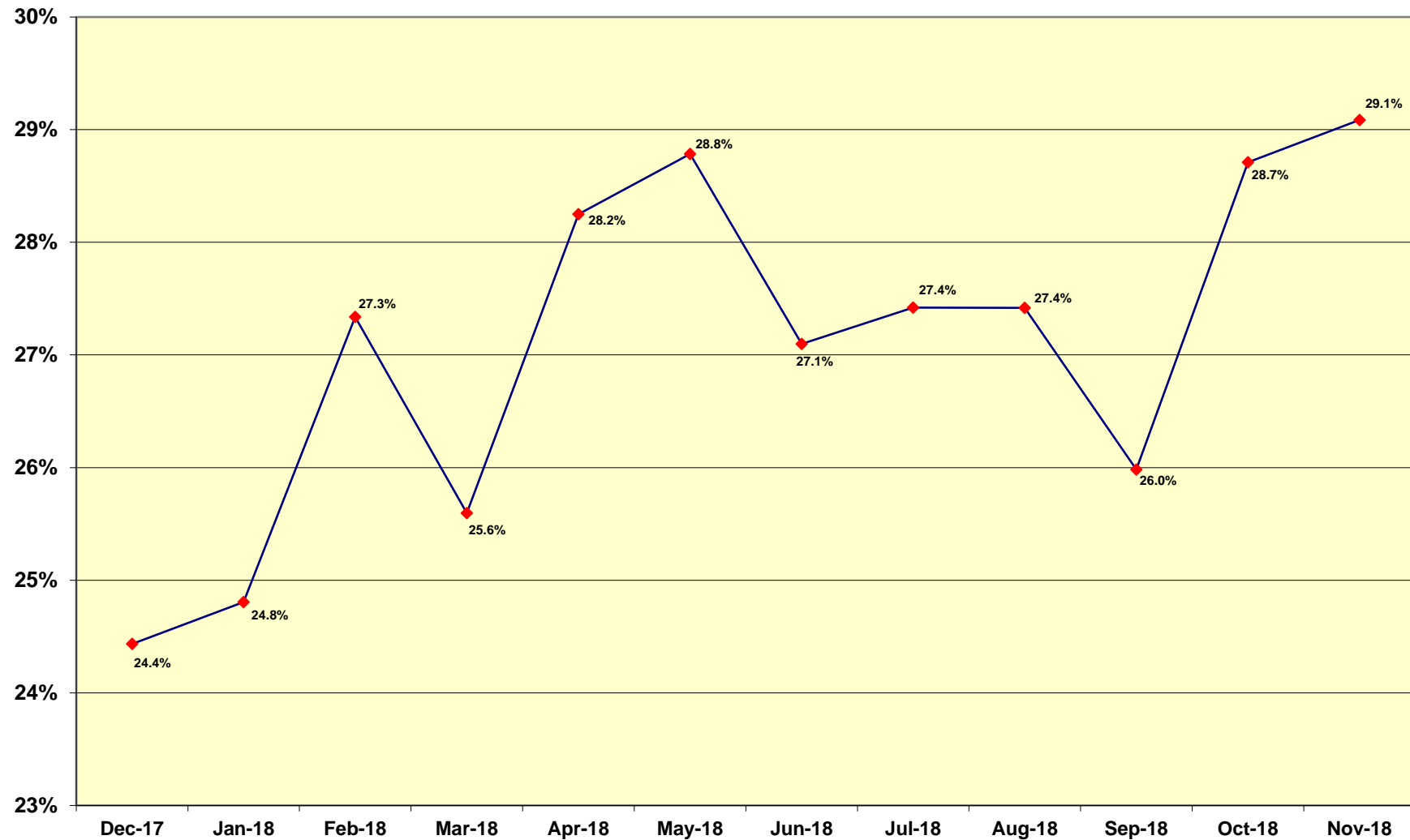


TABLE 4

**WFNJ/TANF Work Participation Rates
for 12-Month Period Ending with NOVEMBER 2018 Statewide**



* The Work Participation rate measures the number of countable Temporary Assistance for Needy Families (TANF) participants based on federal formula. The reported rate is considered to be preliminary until officially calculated by the federal government soon after the close of each federal fiscal year.

Table 5 **NUMBER OF PARTICIPATING HOUSEHOLDS, PERSONS, ADULTS
NJ SNAP AND CHILDREN FOR NOVEMBER 2018 (STATEWIDE)**

(FOOD STAMPS)

NOVEMBER 2016 THROUGH NOVEMBER 2018

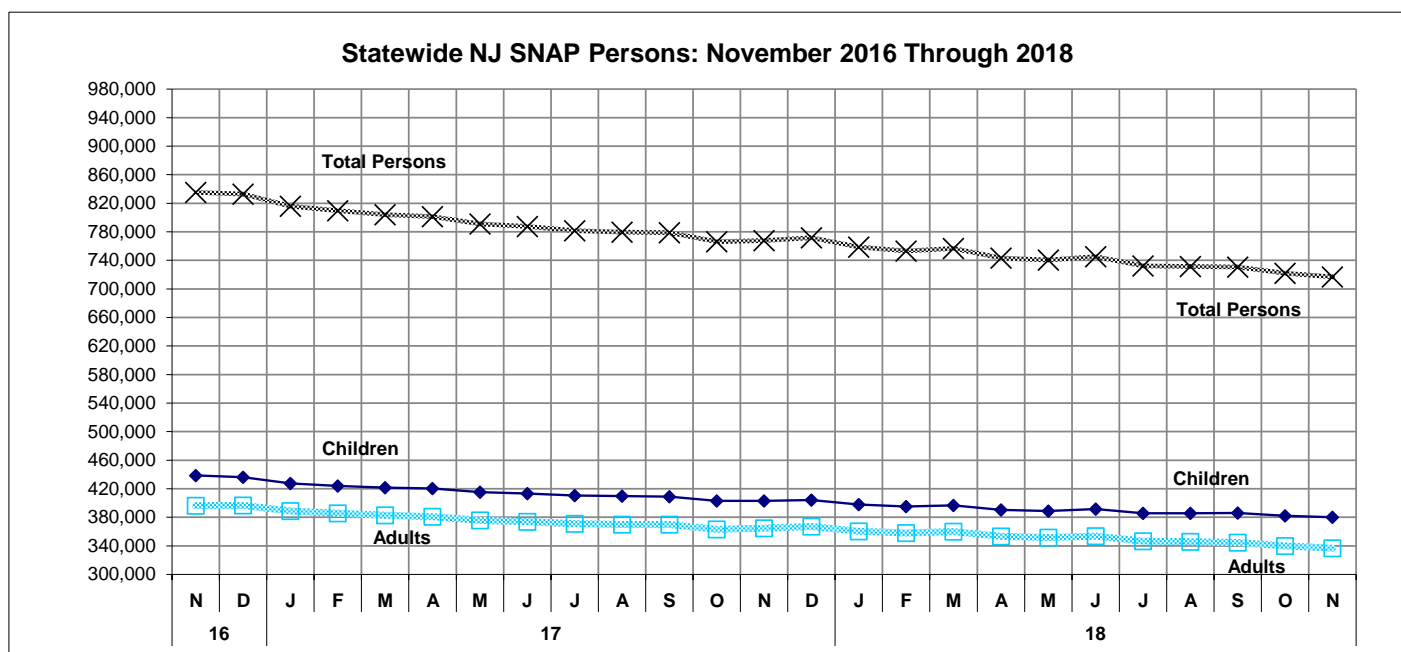
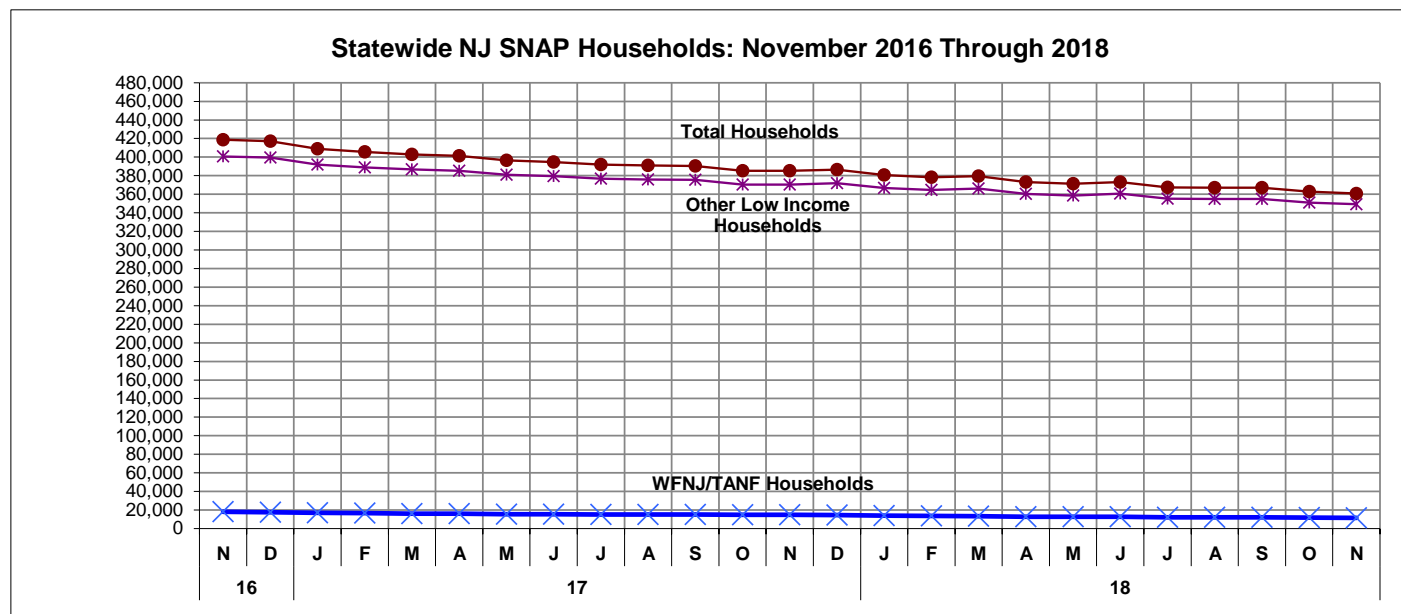
		HOUSEHOLDS				PERSONS				Age 60+	People with a disability
		WFNJ/ TANF	Other low income	TOTAL	% CHNG (1 Yr.)	Adults	Children	TOTAL	% CHNG (1 Yr.)		
2016	NOV	18,083	400,647	418,730	-5.6%	438,718	396,519	835,237	-5.2%		
	DEC	17,706	399,542	417,248	-6.4%	436,173	396,733	832,906	-5.9%		
2016 Average		19,814	409,518	429,332		449,778	404,935	854,714			
2017	JAN	17,044	391,958	409,002	-7.7%	427,349	388,777	816,126	-7.3%		
	FEB	16,687	388,842	405,529	-7.4%	423,886	385,701	809,587	-6.7%		
	MAR	16,158	386,779	402,937	-7.8%	421,536	382,755	804,291	-7.2%		
	APR	15,935	385,361	401,296	-8.3%	420,390	381,088	801,478	-7.8%		
	MAY	15,525	381,043	396,568	-8.1%	415,301	375,949	791,250	-7.9%		
	JUN	15,348	379,341	394,689	-8.1%	413,436	373,920	787,356	-8.0%		
	JUL	15,109	376,747	391,856	-8.9%	410,582	371,153	781,735	-8.9%		
	AUG	15,071	375,901	390,972	-8.0%	409,795	370,000	779,795	-8.1%	132,403	221,507
	SEP	15,032	375,469	390,501	-7.8%	409,052	369,928	778,980	-7.8%	132,065	221,449
	OCT	14,762	370,462	385,224	-8.3%	403,103	363,198	766,301	-8.5%	130,948	219,170
	NOV	14,783	370,436	385,219	-8.0%	403,158	364,706	767,864	-8.1%	130,391	219,210
	DEC	14,648	371,916	386,564	-7.4%	404,418	367,199	771,617	-7.4%	130,292	222,460
2017 Average		15,509	379,521	395,030		413,501	374,531	788,032		131,220	220,759
2018	JAN	13,996	366,670	380,666	-6.9%	398,026	360,502	758,528	-7.1%	128,879	218,735
	FEB	13,566	364,750	378,316	-6.7%	395,314	357,938	753,252	-7.0%	128,094	217,046
	MAR	13,362	366,128	379,490	-5.8%	396,620	360,051	756,671	-5.9%	127,792	216,741
	APR	12,787	360,385	373,172	-7.0%	390,319	353,157	743,476	-7.2%	126,571	214,558
	MAY	12,646	358,605	371,251	-6.4%	388,870	351,724	740,594	-6.4%	125,945	213,705
	JUN	12,636	360,531	373,167	-5.5%	391,455	353,883	745,338	-5.3%	130,916	213,689
	JUL	12,142	355,160	367,302	-6.3%	385,535	346,628	732,163	-6.3%	129,767	211,396
	AUG	12,162	354,922	367,084	-6.1%	385,645	345,658	731,303	-6.2%	129,230	210,919
	SEP	11,978	355,023	367,001	-6.0%	386,047	344,801	730,848	-6.2%	128,684	210,278
	OCT	11,828	351,057	362,885	-5.8%	381,993	339,837	721,830	-5.8%	127,534	208,715
	NOV	11,524	349,288	360,812	-6.3%	380,136	336,835	716,971	-6.6%	126,941	208,324
2018 AVG to date		12,602	358,411	371,013		389,087	350,092	739,179		128,214	213,101

This Table is based on those Households & Persons that received SNAP issuances (benefits) during the month.

Data is derived from NJ MMIS Shared Data Warehouse.
Effective July 2013 this data query source was converted to the SDW.

* Age 60+ and People with a disability columns are independent subsets of the total persons. An individual might appear in both columns.

**TABLE 6: NJ SNAP (FOOD STAMPS)
TRENDS FOR PARTICIPATING HOUSEHOLDS & PERSONS
NOVEMBER 2016 THROUGH NOVEMBER 2018 (STATEWIDE)**

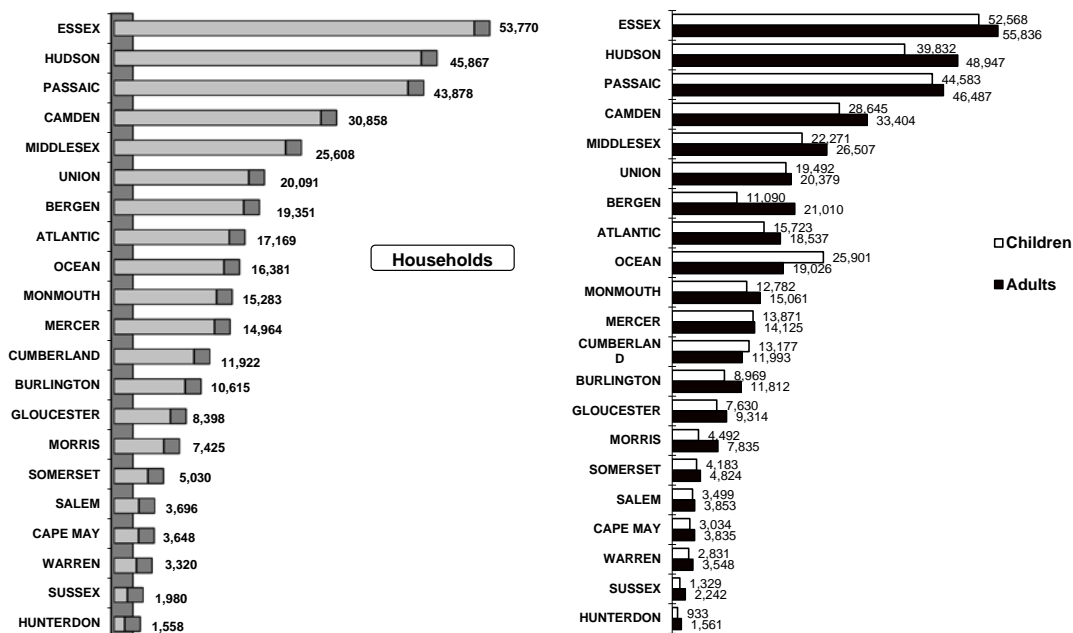


Data is derived from NJ MMIS Shared Data Warehouse.
Effective July 2013 this data query source was converted to the SDW.

Table 7
NJ SNAP**NUMBER OF PARTICIPATING HOUSEHOLDS, PERSONS, ADULTS
AND CHILDREN BY COUNTY FOR NOVEMBER 2018**

Δ = ↑ Caseload %
* = ↓ Caseload %

County	HOUSEHOLDS				PERSONS					
	WFNJ/ TANF	Other low income	TOTAL	% Chng (1 Yr)	Adults	Children	TOTAL	% Chng (1 Yr)	Age 60+	People with a disability
ATLANTIC	714	16,455	17,169	(10.4) *	18,537	15,723	34,260	(11.0) *	5,009	9,468
BERGEN	288	19,063	19,351	(7.0)	21,010	11,090	32,100	(8.2)	11,953	14,688
BURLINGTON	423	10,192	10,615	(5.3)	11,812	8,969	20,781	(6.2)	2,981	6,596
CAMDEN	1,492	29,366	30,858	(3.5) Δ	33,404	28,645	62,049	(4.0) Δ	8,088	17,577
CAPE MAY	87	3,561	3,648	(6.0)	3,835	3,034	6,869	(7.6)	1,103	2,208
CUMBERLAND	426	11,496	11,922	(2.9) Δ	11,993	13,177	25,170	(2.3) Δ	2,869	6,937
ESSEX	2,201	51,569	53,770	(5.5)	55,836	52,568	108,404	(5.7)	15,438	27,217
GLOUCESTER	308	8,090	8,398	(6.4)	9,314	7,630	16,944	(6.3)	2,315	5,485
HUDSON	1,431	44,436	45,867	(6.5)	48,947	39,832	88,779	(6.8)	18,474	26,106
HUNTERDON	29	1,529	1,558	(4.0)	1,561	933	2,494	(5.3)	578	1,004
MERCER	679	14,285	14,964	(3.5) Δ	14,125	13,871	27,996	(3.0) Δ	4,122	9,265
MIDDLESEX	481	25,127	25,608	(7.5)	26,507	22,271	48,778	(8.0)	12,181	16,270
MONMOUTH	236	15,047	15,283	(7.3)	15,061	12,782	27,843	(8.8)	5,632	9,231
MORRIS	107	7,318	7,425	(5.8)	7,835	4,492	12,327	(6.5)	4,065	5,168
OCEAN	316	16,065	16,381	(9.9) *	19,026	25,901	44,927	(9.5)	5,413	9,788
PASSAIC	1,280	42,598	43,878	(6.3)	46,487	44,583	91,070	(5.9)	14,449	20,686
SALEM	125	3,571	3,696	(5.4)	3,853	3,499	7,352	(7.0)	949	2,335
SOMERSET	177	4,853	5,030	(9.2)	4,824	4,183	9,007	(11.7) *	2,052	3,157
SUSSEX	47	1,933	1,980	(10.0) *	2,242	1,329	3,571	(11.3) *	758	1,544
UNION	548	19,543	20,091	(7.2)	20,379	19,492	39,871	(6.3)	7,483	11,384
WARREN	129	3,191	3,320	(4.9)	3,548	2,831	6,379	(5.1)	1,029	2,210
NJ TOTAL	11,524	349,288	360,812	(6.3)	380,136	336,835	716,971	(6.6)	126,941	208,324

Total NJ SNAP Recipients
NOVEMBER 2018 By County

Data is derived from NJ MMIS Shared Data Warehouse
Effective July 2013 this data query source was converted to the SDW

* Age 60+ and People with a disability columns are independent subsets of the total persons. An individual might appear in both columns.

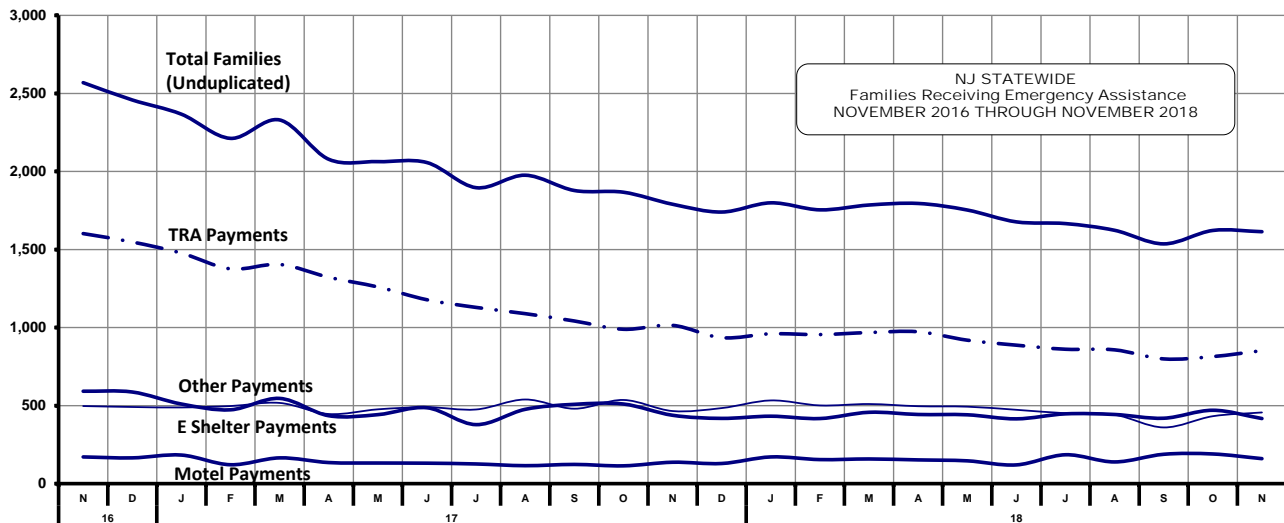
Table 8

TOTAL NUMBER OF ELIGIBLE FAMILIES RECEIVING EMERGENCY ASSISTANCE PAYMENTS

EMERGENCY
ASSISTANCE
(STATEWIDE)

NOVEMBER 2016 THROUGH NOVEMBER 2018 - STATEWIDE

		TOTAL WFNJ/EA		Temp Rent Asst.		Motel Housing		Shelter/Transitional Housing		Other EA	
		Families (Undupl)	% CHNG (1 YR)	Payments (Undupl)	% CHNG (1 YR)	Payments (Undupl)	% CHNG (1 YR)	Payments (Undupl)	% CHNG (1 YR)	Payments (Undupl)	% CHNG (1 YR)
2016	NOV	2,569	-33.2%	1,602	-37.4%	171	-46.4%	497	-15.5%	592	-27.7%
	DEC	2,458	-36.2%	1,548	-41.4%	165	-53.3%	491	-12.5%	587	-30.0%
2016 Average		2,959		1,960		209		506		622	
2017	JAN	2,367	-32.1%	1,477	-38.5%	183	-37.5%	488	-6.7%	510	-23.5%
	FEB	2,212	-35.1%	1,376	-41.1%	121	-53.3%	497	-8.5%	473	-32.0%
	MAR	2,330	-30.8%	1,404	-39.0%	165	-34.3%	517	-1.7%	546	-19.7%
	APR	2,078	-33.0%	1,322	-38.2%	135	-26.6%	446	-9.7%	435	-29.0%
	MAY	2,063	-31.5%	1,260	-39.5%	132	-23.7%	476	-2.9%	442	-23.9%
	JUN	2,057	-31.2%	1,178	-41.7%	131	-23.8%	490	-5.6%	486	-17.8%
	JUL	1,896	-31.5%	1,129	-38.8%	126	-8.0%	475	-1.7%	378	-36.8%
	AUG	1,976	-30.3%	1,089	-40.9%	115	-24.3%	539	10.0%	476	-28.6%
	SEP	1,878	-31.7%	1,042	-40.9%	123	-48.1%	480	0.8%	508	-14.0%
	OCT	1,867	-32.7%	989	-39.5%	114	-63.5%	536	-0.6%	510	-14.6%
	NOV	1,790	-30.3%	1,014	-36.7%	137	-19.9%	465	-6.4%	438	-26.0%
	DEC	1,740	-29.2%	935	-39.6%	129	-21.8%	484	-1.4%	418	-28.8%
2017 Average		2,021		1,185		134		491		468	
2018	JAN	1,799	-24.0%	960	-35.0%	171	-6.6%	533	9.2%	432	-15.3%
	FEB	1,754	-20.7%	955	-30.6%	154	27.3%	501	0.8%	417	-11.8%
	MAR	1,785	-23.4%	968	-31.1%	158	-4.2%	510	-1.4%	457	-16.3%
	APR	1,795	-13.6%	973	-26.4%	152	12.6%	496	11.2%	443	1.8%
	MAY	1,753	-15.0%	919	-27.1%	146	10.6%	493	3.6%	441	-0.2%
	JUN	1,677	-18.5%	887	-24.7%	120	-8.4%	473	-3.5%	415	-14.6%
	JUL	1,666	-12.1%	861	-23.7%	185	46.8%	451	-5.1%	447	18.3%
	AUG	1,623	-17.9%	857	-21.3%	139	20.9%	441	-18.2%	443	-6.9%
	SEP	1,536	-18.2%	799	-23.3%	188	52.8%	360	-25.0%	419	-17.5%
	OCT	1,622	-13.1%	814	-17.7%	190	66.7%	432	-19.4%	470	-7.8%
	NOV	1,614	-9.8%	852	-16.0%	160	16.8%	456	-1.9%	417	-4.8%
2018 AVG to date		1,693		895		160		468		436	



WFNJ/EA data is derived from NJ MMIS Shared Data Warehouse.
Effective July 2013 this data query source was converted to the SDW.

* Effective Feb '11 Transitional Housing Payments were removed from "Other EA Payments" and added to "Shelter Payments."

Table 9
EMERGENCY
ASSISTANCE
(BY COUNTY)**NUMBER OF TOTAL ELIGIBLE FAMILIES RECEIVING EMERGENCY ASSISTANCE PAYMENTS
BY COUNTY (UNDULICATED CASES) NOVEMBER 2018**

County	TOTAL WFNJ/EA Families (Undupl)	% CHNG From Nov 17	Temp Rent Asst. Payments (Undupl)	Motel Housing Payments (Undupl)	Shelter/Transitional Housing Payments (Undupl)	Other WFNJ/EA Payments (Undupl)	SSI Recipients Receiving EA**
ATLANTIC	90	-8.2%	65	1	2	34	83
BERGEN	50	-7.4%	26	0	16	16	3
BURLINGTON	104	4.0%	25	15	68	14	0
CAMDEN	84	7.7%	34	16	26	21	19
CAPE MAY	15	-11.8%	4	10	0	4	8
CUMBERLAND	3	50.0% Δ	0	0	1	2	1
ESSEX	293	-18.8%	109	0	173	34	53
GLOUCESTER	23	-4.2%	5	0	11	11	14
HUDSON	212	17.8%	153	10	39	85	21
HUNTERDON	1	0.0%	1	0	0	0	0
MERCER	92	-17.9%	48	13	29	32	52
MIDDLESEX	97	18.3%	34	31	15	30	22
MONMOUTH	12	-40.0% *	1	8	3	1	7
MORRIS	28	33.3% Δ	7	14	2	9	16
OCEAN	67	-19.3%	36	22	1	15	10
PASSAIC	272	-22.3% *	212	3	24	60	46
SALEM	8	100.0% Δ	0	1	3	4	5
SOMERSET	59	-1.7%	29	6	18	20	29
SUSSEX	0	0.0%	0	0	0	0	5
UNION	90	-28.0% *	54	9	24	20	28
WARREN	14	7.7%	9	1	1	5	3
NJ TOTAL	1,614	-9.8%	852	160	456	417	425

Δ = ↑ Caseload %

* = ↓ Caseload %

**SSI-EA includes pay codes 22 and 24, data is derived from NJ Division of Family Development FAMIS Report #FM430-03A

WFNJ/EA data is derived from NJ MMIS Shared Data Warehouse.

Effective July 2013 this data query source was converted to the SDW

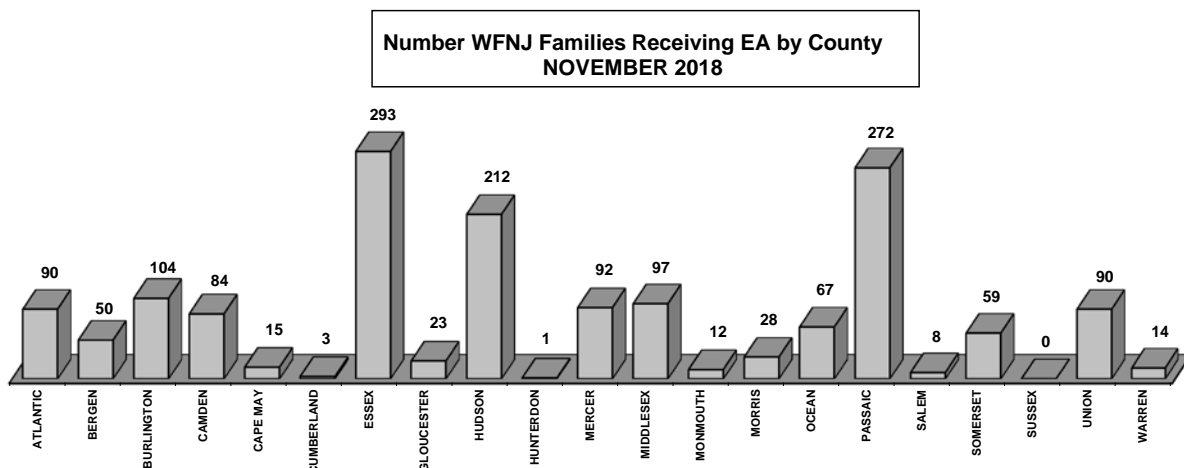
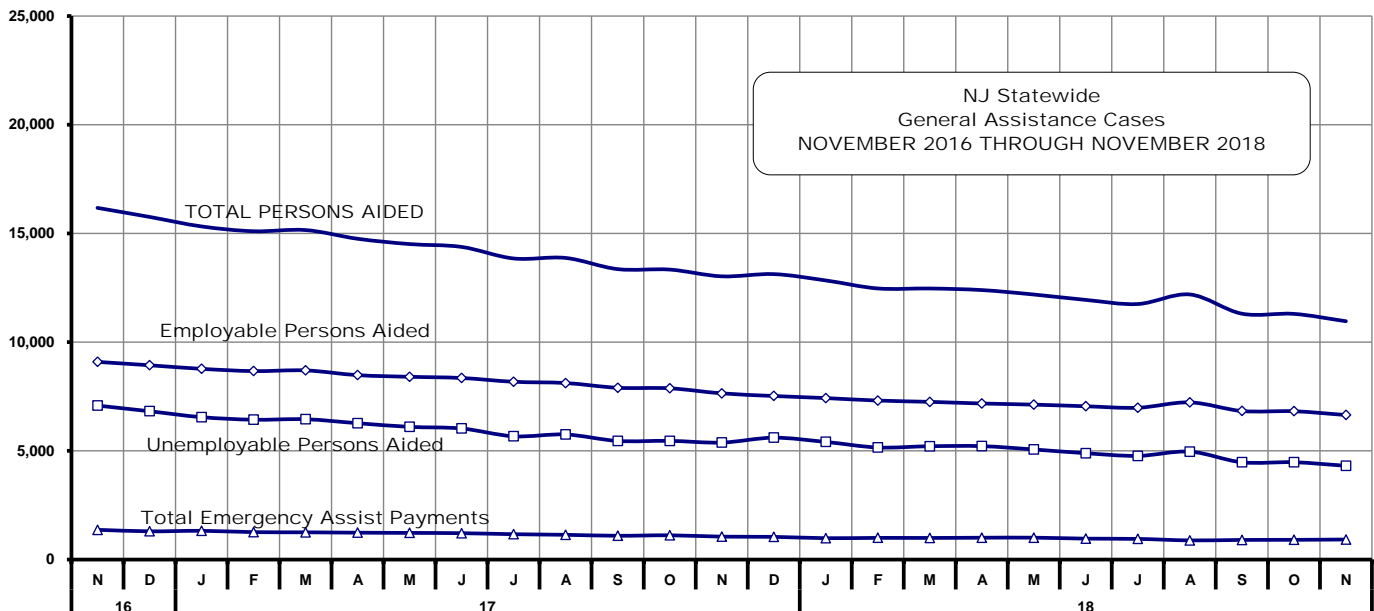


Table 10
GENERAL ASSISTANCE PROGRAM
**NUMBER OF EMPLOYABLE AND UNEMPLOYABLE RECIPIENTS
AND EMERGENCY ASSISTANCE PAYMENTS FOR NOVEMBER 2018 - STATEWIDE**
NOVEMBER 2016 THROUGH NOVEMBER 2018

	Total Cases						Emergency Assistance Cases			
	Employable	% Chng (1 Yr)	Unemployable	% Chng (1 Yr)	Total	% Chng (1 Yr)	Temporary Rental Assistance	Other GA-EA	Total	% Chng (1 Yr)
2016 NOV	7,084	-40.5%	9,093	-9.6%	16,177	-26.4%	1,369	1,328	2,697	-21.2%
DEC	6,823	-42.3%	8,938	-10.2%	15,761	-27.6%	1,300	1,251	2,551	-31.6%
2016 AVERAGE	8,779		9,387		18,166		1,534	1,393	2,927	
2017 JAN	6,551	-41.1%	8,773	-8.7%	15,324	-26.1%	1,323	1,190	2,513	-24.4%
FEB	6,433	-40.1%	8,669	-9.7%	15,102	-25.7%	1,262	1,111	2,373	-28.7%
MAR	6,455	-38.2%	8,701	-9.2%	15,156	-24.3%	1,254	1,185	2,439	-27.2%
APR	6,273	-37.1%	8,483	-11.8%	14,756	-24.7%	1,237	1,174	2,411	-25.6%
MAY	6,105	-34.0%	8,407	-12.4%	14,512	-23.0%	1,227	1,180	2,407	-11.6%
JUN	6,029	-31.6%	8,352	-13.1%	14,381	-21.9%	1,214	1,192	2,406	-17.6%
JUL	5,672	-30.2%	8,178	-12.3%	13,850	-20.6%	1,167	1,011	2,178	-19.2%
AUG	5,754	-27.9%	8,120	-13.2%	13,874	-20.0%	1,139	1,196	2,335	-18.4%
SEP	5,458	-27.7%	7,902	-13.7%	13,360	-20.0%	1,095	1,039	2,134	-18.9%
OCT	5,461	-26.5%	7,878	-14.1%	13,339	-19.6%	1,117	1,148	2,265	-19.2%
NOV	5,382	-24.0%	7,646	-15.9%	13,028	-19.5%	1,055	936	1,991	-26.2%
DEC	5,606	-17.8%	7,524	-15.8%	13,130	-16.7%	1,045	1,059	2,104	-17.5%
2017 AVERAGE	5,932		8,219		14,151		1,178	1,118	2,296	
2018 JAN	5,411	-17.4%	7,428	-15.3%	12,839	-16.2%	984	1,113	2,097	-16.6%
FEB	5,157	-19.8%	7,314	-15.6%	12,471	-17.4%	999	1,069	2,068	-12.9%
MAR	5,214	-19.2%	7,255	-16.6%	12,469	-17.7%	995	1,055	2,050	-15.9%
APR	5,217	-16.8%	7,179	-15.4%	12,396	-16.0%	1,006	1,210	2,216	-8.1%
MAY	5,065	-17.0%	7,127	-15.2%	12,192	-16.0%	1,008	1,151	2,159	-10.3%
JUN	4,892	-18.9%	7,052	-15.6%	11,944	-16.9%	963	1,053	2,016	-16.2%
JUL	4,770	-15.9%	6,984	-14.6%	11,754	-15.1%	951	1,066	2,017	-7.4%
AUG	4,964	-13.7%	7,230	-11.0%	12,194	-12.1%	882	1,122	2,004	-14.2%
SEP	4,476	-18.0%	6,834	-13.5%	11,310	-15.3%	904	1,054	1,958	-8.2%
OCT	4,478	-18.0%	6,823	-13.4%	11,301	-15.3%	909	1,079	1,988	-12.2%
NOV	4,314	-19.8%	6,649	-13.0%	10,963	-15.9%	923	998	1,921	-3.5%
2018 AVG to date	4,905		7,080		11,985		957	1,088	2,045	



Source: NJ Division of Family Development, GA Fiscal Unit

TABLE 11

GENERAL
ASSISTANCE
PROGRAM**EMPLOYABLE AND UNEMPLOYABLE CASES
AND EMERGENCY ASSISTANCE CASES RECEIVING PAYMENTS BY COUNTY**

NOVEMBER 2018

County	Total Cases						Emergency Assistance Cases			
	Employable	% Chng (From Nov 17)	Unemployable	% Chng (From Nov 17)	Total	% Chng (From Nov 17)	Temporary Rental Assist.	Other GA-EA	Total	% Chng (From Nov 17)
ATLANTIC	433	-23.2%	320	-16.9%	753	-20.7% *	114	37	151	-8.5%
BERGEN	226	-27.1%	514	-11.4%	740	-16.9%	134	26	160	-8.6%
BURLINGTON	214	-22.2%	405	-19.6%	619	-20.5%	34	126	160	22.1%
CAMDEN	467	-27.8%	725	-23.1%	1,192	-25.0% *	49	94	143	1.4%
CAPE MAY	65	47.7%	80	-20.8%	145	0.0%	20	40	60	0.0%
CUMBERLAND	201	-8.6%	241	-26.1%	442	-19.0%	2	6	8	300.0% Δ
ESSEX	745	-21.8%	458	-10.9%	1,203	-18.0%	42	109	151	-21.8% *
GLOUCESTER	106	-27.4%	238	-14.4%	344	-18.9%	13	22	35	0.0%
HUDSON	405	-13.1%	861	-20.3%	1,266	-18.1%	69	65	134	-2.9%
HUNTERDON	50	25.0%	56	-21.1%	106	-4.5%	20	10	30	3.4%
MERCER	194	-21.1%	486	1.7%	680	-6.1%	55	44	99	0.0%
MIDDLESEX	193	-22.2%	383	-2.5%	576	-10.1%	65	62	127	10.4%
MONMOUTH	99	76.8%	182	5.2%	281	22.7% Δ	1	22	23	64.3% Δ
MORRIS	118	-18.1%	213	-6.6%	331	-11.0%	60	57	117	14.7%
OCEAN	161	-22.6%	289	-8.5%	450	-14.1%	53	84	137	-13.8%
PASSAIC	155	-46.6%	603	-4.6%	758	-17.8%	94	20	114	-0.9%
SALEM	31	-31.1%	71	-7.8%	102	-16.4%	2	1	3	-81.3% *
SOMERSET	70	11.1%	74	21.3%	144	16.1% Δ	22	28	50	31.6% Δ
SUSSEX	41	-18.0%	34	-29.2%	75	-23.5% *	3	15	18	-25.0% *
UNION	251	-7.4%	305	-14.6%	556	-11.5%	61	113	174	-16.3%
WARREN	89	-7.3%	111	9.9%	200	1.5% Δ	10	17	27	-15.6%
NJ TOTAL	4,314	-19.8%	6,649	-13.0%	10,963	-15.9%	923	998	1,921	-3.5%

Δ = ↑ Caseload %

* = ↓ Caseload %

Source: NJ Division of Family Development, GA Fiscal Unit

TABLE 12
OFFICE OF CHILD
SUPPORT
SERVICES

OFFICE OF CHILD SUPPORT SERVICES

Quarterly Performance Report

State Summary

TITLE IV-D SOURCE COLLECTION REPORT

Comparison of Quarter-4 (FFY 17 vs. FFY 18)

COLLECTION SOURCE	TOTAL 7/1/2017 - 9/30/2017	% OF TOTAL COLLECTIONS	TOTAL 7/1/2018 - 9/30/2018	% OF TOTAL COLLECTIONS	DOLLAR CHANGE	% CHANGE
FEDERAL TAX	\$ 2,318,806	0.76%	\$ 1,479,724	0.50%	\$ (839,082)	-36.19%
STATE TAX	\$ 2,014,414	0.66%	\$ 2,167,780	0.73%	\$ 153,366	7.61%
UIB	\$ 6,570,564	2.17%	\$ 6,126,839	2.05%	\$ (443,725)	-6.75%
INC WITHHOLD	\$ 211,412,753	69.69%	\$ 209,595,891	70.23%	\$ (1,816,862)	-0.86%
FROM OTHER STATES	\$ 11,999,722	3.96%	\$ 11,861,017	3.97%	\$ (138,705)	-1.16%
ADMIN ENFORCEMENT	\$ 4,078,370	1.34%	\$ 3,683,272	1.23%	\$ (395,097)	-9.69%
OTHER	\$ 64,955,033	21.41%	\$ 63,547,795	21.29%	\$ (1,407,238)	-2.17%
TOTAL COLLECTIONS*	\$ 303,349,662	100%	\$ 298,462,318	100%	\$ (4,887,343)	-1.61%
DISTRIBUTED COLLECTIONS**	\$ 273,417,204		\$ 266,215,508		\$ (7,201,696)	-2.63%

* Includes collections on both current support and arrears.

** Includes collections on both current support and arrears; also includes money sent to other states.

SOURCE: NJKiDS (Based on Federal Quarterly Report of Collections - OCSE-34A except Distributed Collections)
Distributed Collections obtained from Federal Data Report - OCSE-157, which is reported annually to Congress and used in the calculation of incentive dollars earned by each state.

TABLE 13

OFFICE OF CHILD
SUPPORT SERVICES**OFFICE OF CHILD SUPPORT SERVICES**

State Summary

TITLE IV-D PATERNITY ESTABLISHMENT REPORT**Comparison of November (FFY 17 vs. FFY 18)**

County Office	NOVEMBER 2017			NOVEMBER 2018			Increase or Decrease (-) from FFY 2017 to FFY 2018
	Total Children Born Out of Wedlock*	Number of Paternities Established	Percent of Paternities Established	Total Children Born Out of Wedlock*	Number of Paternities Established	Percent of Paternities Established	
Atlantic	7,471	7,345	98.3%	7,115	7,001	98.4%	0.1%
Bergen	3,681	3,669	99.7%	3,460	3,395	98.1%	-1.6%
Burlington	6,190	5,981	96.6%	5,786	5,582	96.5%	-0.1%
Camden	19,654	18,621	94.7%	17,605	16,926	96.1%	1.4%
Cape May	1,532	1,509	98.5%	1,413	1,390	98.4%	-0.1%
Cumberland	7,567	7,492	99.0%	7,163	7,088	99.0%	-0.1%
Essex	31,540	29,415	93.3%	28,707	26,841	93.5%	0.2%
Gloucester	5,324	5,229	98.2%	4,972	4,905	98.7%	0.4%
Hudson	13,071	12,391	94.8%	11,714	11,019	94.1%	-0.7%
Hunterdon	362	366	101.1%	323	313	96.9%	-4.2%
Mercer	8,744	8,447	96.6%	8,132	7,812	96.1%	-0.5%
Middlesex	7,793	7,584	97.3%	7,240	7,014	96.9%	-0.4%
Monmouth	6,489	6,221	95.9%	6,118	5,859	95.8%	-0.1%
Morris	1,615	1,584	98.1%	1,442	1,428	99.0%	0.9%
Ocean	5,645	5,504	97.5%	5,308	5,160	97.2%	-0.3%
Passaic	13,772	12,887	93.6%	12,528	11,756	93.8%	0.3%
Salem	2,940	2,837	96.5%	2,859	2,767	96.8%	0.3%
Somerset	1,866	1,800	96.5%	1,689	1,629	96.4%	0.0%
Sussex	702	694	98.9%	630	627	99.5%	0.7%
Union	11,855	11,205	94.5%	11,093	10,488	94.5%	0.0%
Warren	1,157	1,145	99.0%	1,045	1,028	98.4%	-0.6%
NJ TOTALS	158,970	151,926	95.6%	146,342	140,028	95.7%	0.1%

SOURCE: NJKiDS (Based on Federal Performance Measures - OCSE-157)

* Information on Out of Wedlock Births obtained from NJ Bureau of Vital Statistics

TABLE 14

OFFICE OF CHILD
SUPPORT SERVICES**OFFICE OF CHILD SUPPORT SERVICES**

State Summary

TITLE IV-D REPORT OF CASES WITH ORDERS

Comparison of November (FFY 17 vs. FFY 18)

County Office	November 2017			November 2018			Increase or Decrease (-) from FFY 2017 to FFY 2018
	TOTAL CASES	CASES WITH ORDERS	% OF CASES WITH ORDERS	TOTAL CASES	CASES WITH ORDERS	% OF CASES WITH ORDERS	
Atlantic	13,411	11,588	86.4%	12,748	11,231	88.1%	1.7%
Bergen	12,595	12,095	96.0%	12,128	11,726	96.7%	0.7%
Burlington	14,892	13,103	88.0%	14,517	12,689	87.4%	-0.6%
Camden	33,279	27,681	83.2%	30,347	26,721	88.1%	4.9%
Cape May	3,415	3,089	90.5%	3,249	2,931	90.2%	-0.2%
Cumberland	12,792	11,969	93.6%	12,367	11,741	94.9%	1.4%
Essex	48,970	38,200	78.0%	45,655	36,724	80.4%	2.4%
Gloucester	11,409	10,747	94.2%	10,911	10,375	95.1%	0.9%
Hudson	24,800	19,823	79.9%	22,731	18,387	80.9%	1.0%
Hunterdon	1,532	1,491	97.3%	1,479	1,421	96.1%	-1.2%
Mercer	15,608	13,689	87.7%	14,788	13,067	88.4%	0.7%
Middlesex	18,899	17,444	92.3%	18,043	16,820	93.2%	0.9%
Monmouth	15,391	14,520	94.3%	15,037	14,208	94.5%	0.1%
Morris	6,296	6,047	96.0%	6,059	5,895	97.3%	1.2%
Ocean	15,769	15,045	95.4%	15,244	14,536	95.4%	-0.1%
Passaic	25,227	18,292	72.5%	23,462	17,618	75.1%	2.6%
Salem	4,666	4,494	96.3%	4,451	4,258	95.7%	-0.6%
Somerset	5,314	4,958	93.3%	5,033	4,712	93.6%	0.3%
Sussex	2,907	2,754	94.7%	2,784	2,694	96.8%	2.0%
Union	20,009	18,387	91.9%	18,863	17,665	93.6%	1.8%
Warren	3,329	3,004	90.2%	3,077	2,838	92.2%	2.0%
NJ TOTALS	310,510	268,420	86.4%	292,973	258,257	88.2%	1.7%

SOURCE: NJKiDS (Based on Federal Performance Measures - OCSE-157)

TABLE 15

OFFICE OF CHILD
SUPPORT SERVICES

OFFICE OF CHILD SUPPORT SERVICES

State Summary

TITLE IV-D COLLECTIONS ON CURRENT SUPPORT

Comparison of November (FFY 17 vs. FFY 18)

County Office	November 2017			November 2018			Increase or Decrease (-) from FFY 2017 to FFY 2018
	Total Current Support Due	Total Current Support Distributed	Total Collection Rate	Total Current Support Due	Total Current Support Distributed	Total Collection Rate	
Atlantic	\$3,713,687	\$2,455,055	66.1%	\$3,756,039	\$2,510,671	66.8%	0.7%
Bergen	\$8,548,062	\$6,550,332	76.6%	\$8,504,497	\$6,584,890	77.4%	0.8%
Burlington	\$5,976,060	\$4,192,376	70.2%	\$5,891,624	\$4,125,770	70.0%	-0.1%
Camden	\$8,085,156	\$4,869,747	60.2%	\$8,043,377	\$4,827,527	60.0%	-0.2%
Cape May	\$1,095,545	\$749,417	68.4%	\$1,125,956	\$775,630	68.9%	0.5%
Cumberland	\$3,003,084	\$1,797,618	59.9%	\$3,114,280	\$1,848,188	59.3%	-0.5%
Essex	\$11,049,253	\$6,595,443	59.7%	\$10,860,448	\$6,514,148	60.0%	0.3%
Gloucester	\$4,314,656	\$2,809,833	65.1%	\$4,318,331	\$2,867,092	66.4%	1.3%
Hudson	\$7,158,889	\$4,896,218	68.4%	\$7,152,231	\$4,906,963	68.6%	0.2%
Hunterdon	\$1,291,616	\$1,033,021	80.0%	\$1,271,683	\$1,015,394	79.8%	-0.1%
Mercer	\$4,300,519	\$2,666,876	62.0%	\$4,220,128	\$2,622,194	62.1%	0.1%
Middlesex	\$7,877,184	\$5,454,933	69.2%	\$7,812,752	\$5,452,167	69.8%	0.5%
Monmouth	\$7,465,764	\$5,397,705	72.3%	\$7,539,544	\$5,437,099	72.1%	-0.2%
Morris	\$4,590,659	\$3,348,545	72.9%	\$4,637,086	\$3,390,435	73.1%	0.2%
Ocean	\$6,868,863	\$4,990,007	72.6%	\$6,763,215	\$4,884,170	72.2%	-0.4%
Passaic	\$6,631,070	\$4,252,884	64.1%	\$6,543,658	\$4,218,452	64.5%	0.3%
Salem	\$1,143,644	\$701,296	61.3%	\$1,151,638	\$682,294	59.2%	-2.1%
Somerset	\$3,237,912	\$2,529,591	78.1%	\$3,141,151	\$2,482,546	79.0%	0.9%
Sussex	\$1,864,072	\$1,419,278	76.1%	\$1,837,936	\$1,451,877	79.0%	2.9%
Union	\$6,890,007	\$4,730,264	68.7%	\$6,855,623	\$4,775,886	69.7%	1.0%
Warren	\$1,368,687	\$1,010,351	73.8%	\$1,344,523	\$996,983	74.2%	0.3%
NJ TOTALS	\$106,474,390	\$72,450,790	68.0%	\$105,885,720	\$72,370,378	68.3%	0.3%

SOURCE: NJKiDS (Based on Federal Performance Measures - OCSE-157)

TABLE 16

OFFICE OF CHILD
SUPPORT SERVICES**OFFICE OF CHILD SUPPORT SERVICES**

State Summary

TITLE IV-D CASES ARREARS COLLECTION REPORT**Comparison of November (FFY 17 vs. FFY 18)**

County Office	November 2017			November 2018			Increase or Decrease (-) from FFY 2017 to FFY 2018
	Total Cases with Arrears	Total Amount Collected	Average Arrears Collection per Case	Total Cases with Arrears	Total Amount Collected	Average Arrears Collection per Case	
Atlantic	7,637	\$582,115	\$76.22	\$614,781	\$8,065.55	\$0.01	-\$76.21
Bergen	7,736	\$1,205,378	\$155.81	\$923,215	\$5,925.10	\$0.01	-\$155.81
Burlington	8,741	\$861,869	\$98.60	\$704,386	\$7,143.82	\$0.01	-\$98.59
Camden	17,596	\$1,301,449	\$73.96	\$1,178,954	\$15,939.83	\$0.01	-\$73.95
Cape May	2,084	\$178,033	\$85.43	\$155,539	\$1,820.69	\$0.01	-\$85.42
Cumberland	7,972	\$470,617	\$59.03	\$405,536	\$6,869.57	\$0.02	-\$59.02
Essex	24,042	\$1,916,663	\$79.72	\$1,953,509	\$24,504.18	\$0.01	-\$79.71
Gloucester	7,262	\$631,195	\$86.92	\$572,914	\$6,591.46	\$0.01	-\$86.91
Hudson	13,265	\$1,325,907	\$99.96	\$1,094,220	\$10,947.09	\$0.01	-\$99.95
Hunterdon	952	\$127,405	\$133.83	\$138,271	\$1,033.19	\$0.01	-\$133.82
Mercer	8,930	\$680,615	\$76.22	\$775,124	\$10,170.01	\$0.01	-\$76.20
Middlesex	11,638	\$1,116,634	\$95.95	\$1,057,577	\$11,022.48	\$0.01	-\$95.94
Monmouth	9,264	\$1,072,023	\$115.72	\$972,113	\$8,400.62	\$0.01	-\$115.71
Morris	4,044	\$520,423	\$128.69	\$514,829	\$4,000.53	\$0.01	-\$128.68
Ocean	9,893	\$1,018,849	\$102.99	\$904,401	\$8,781.71	\$0.01	-\$102.98
Passaic	12,124	\$1,067,553	\$88.05	\$969,598	\$11,011.54	\$0.01	-\$88.04
Salem	2,782	\$225,501	\$81.06	\$154,287	\$1,903.44	\$0.01	-\$81.04
Somerset	3,349	\$376,214	\$112.34	\$404,151	\$3,597.69	\$0.01	-\$112.33
Sussex	1,859	\$251,774	\$135.44	\$203,603	\$1,503.32	\$0.01	-\$135.43
Union	12,037	\$1,050,774	\$87.30	\$1,023,456	\$11,724.07	\$0.01	-\$87.28
Warren	1,930	\$191,593	\$99.27	\$145,782	\$1,468.52	\$0.01	-\$99.26
NJ TOTALS	175,137	\$16,172,584	\$92.34	14,866,246	\$162,424	\$0.01	-\$92.33

SOURCE:OCSE-157 Child Support Enforcement Annual Data Report

Table 17

WORK FIRST NEW JERSEY STATISTICAL SUMMARY

WFNJ

NOVEMBER 2018

COUNTY	EMPLOYMENT DIRECTED ACTIVITIES			EMPLOYED OPEN (WFNJ RECIPIENT)	SUPPORT SERVICES ON ACTIVE CASE		CLOSED FOR EMPLOYMENT THIS MONTH	POST ASSISTANCE CHILD CARE
	CWEP	ALL OTHER TRAINING	JOB SEARCH		CHILD CARE	TRAINING REL. EXPENSES		
ATLANTIC	49	101	17	122	36	279	20	54
BERGEN	38	2	45	13	24	24	8	34
BURLINGTON	64	20	60	77	56	65	14	96
CAMDEN	140	146	7	192	148	119	24	178
CAPE MAY	2	5	1	6	4	5	1	14
CUMBERLAND	57	63	49	27	24	58	16	35
ESSEX	251	362	27	335	261	380	56	354
GLOUCESTER	11	21	4	36	10	45	8	32
HUDSON	125	251	16	130	174	327	37	208
HUNTERDON	0	0	1	1	1	0	0	2
MERCER	73	62	78	91	94	83	21	103
MIDDLESEX	25	13	35	42	39	37	9	79
MONMOUTH	29	37	22	42	46	27	4	43
MORRIS	7	2	21	15	8	8	4	14
OCEAN	2	104	0	22	24	35	3	50
PASSAIC	260	112	15	80	123	187	12	100
SALEM	0	14	9	9	3	9	3	7
SOMERSET	36	9	7	35	21	17	2	29
SUSSEX	9	2	5	3	2	4	3	5
UNION	145	68	3	46	59	97	9	69
WARREN	20	4	9	16	15	6	3	20
STATE	1,343	1,398	431	1,340	1,172	1,812	257	1,526

Data is derived from NJ Division of Family Development's FAMIS Reports RM064-01 & RM703-51, AdHoc Reports 5549 & 5598 and SDW Report WR00022WZ_CC

**DIVISION OF FAMILY DEVELOPMENT CURRENT PROGRAM STATISTICS
NOVEMBER 2018**

ACRONYMS

EMERGENCY ASSISTANCE (EA) - Payments to those eligible for WFNJ/TANF or WFNJ/GA, authorized during the 30 consecutive days immediately following the emergency (defined as a substantial loss of shelter, food, clothing, or household furnishings by fire, flood or other similar disaster) or if eligible individual or family is in an imminent or actual state of homelessness.

NJ SNAP - Formerly the Food Stamp Program, now known as **NJ SNAP** (NJ Supplemental Nutrition Assistance Program) authorized by Congress as a nutritional supplement program to provide low income households with more food of greater variety and better nutrition. Program eligibility is based on household income, resources, and expenses for medical, shelter, and dependent care. CWA staff refers certain recipients to the New Jersey Department of Labor for participation in the Food Stamp Employment and Training Program.

FAMIS: Family Assistance Management Information System

GAAS: General Assistance Automated System

NJKIDS: New Jersey Kids Deserve Support (Child Support Information Management System)

NJ MMIS SHARED DATA WAREHOUSE: The Shared Data Warehouse (SDW) is the repository for New Jersey's DFD and Medicaid data. Since 2003, OptumInsight has administered the SDW and provided access to the data through a reporting tool known as Business Objects.

OMEGA: Online Management of Economic Goal Achievement

SSI-EA: Supplemental Security Income-Emergency Assistance

WFNJ: Work First New Jersey - Fully implemented July 1, 1997, this is New Jersey's welfare reform program which responds to the requirements of the Federal Personal Responsibility and Work Opportunity Reconciliation Act (**PRWORA**) of 1996. PRWORA established Temporary Assistance for Needy Families (**TANF**) as the replacement for AFDC cash assistance. WFNJ includes two segments, **WFNJ/TANF** for families with children, and **WFNJ/GA** (General Assistance) for single adults and couples without dependent children. WFNJ emphasizes achieving self-sufficiency and limits lifetime receipt of financial assistance to a total of five years.

**DIVISION OF FAMILY DEVELOPMENT CURRENT PROGRAM STATISTICS
NOVEMBER 2018**

EXPLANATORY NOTES

The Department of Human Services Division of Family Development provides basic income and an opportunity to achieve self-sufficiency for individuals and families served by the Division's programs. The Division provides leadership, direction and supervision to those public agencies responsible for administering those programs and plans for and develops policies to promote self-sufficiency.

WFNJ Statistical Summary (Table 17)

Employment Directed Activities (EDA) - From Activities Summary Report (OMEGA report # RM064). Unduplicated count of persons participating in Community Work Experience Program (CWEP), All Other Training, or Job Search.

Number of Persons Employed This Month, Still Receiving TANF Individuals with open "empl" activity on OMEGA. Ad hoc report.

Participants Receiving Child Care Services - From Issuance Disbursement Summary (OMEGA report # RM703). Total number of active participants who show receipt of **Child Care**.

Number of Persons Closed on FAMIS Due to Employment - From FAMIS report #5549-RM-2.

Post TANF and Receiving Child Care - Persons no longer in receipt of TANF but still receiving child care. From Share Data Warehouse Child Care case count based on Child Care payments (SDW report WR00022WZ_CC).