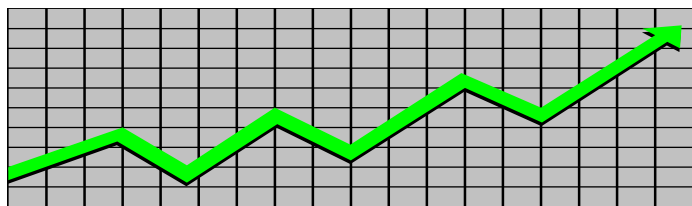


State of New Jersey
Department of Human Services
Division of Family Development

CURRENT PROGRAM STATISTICS



November 2019
Natasha Johnson, Assistant Commissioner

DIVISION OF FAMILY DEVELOPMENT CURRENT PROGRAM STATISTICS

NOVEMBER 2019

TABLE OF CONTENTS

HIGHLIGHTS:

WFNJ/TANF.....	ii
NJ SNAP.....	ii
EMERGENCY ASSISTANCE.....	ii
GENERAL ASSISTANCE.....	iii
GA Emergency Assistance.....	iii
GA Program.....	iii
CHILD SUPPORT SERVICES.....	iii
WORK FIRST NEW JERSEY (WFNJ).....	iii
STATISTICS- BY STATE & COUNTY.....	1
Table 1: WFNJ/TANF Families & Persons (NJ Statewide) November 2017 to 2019.....	1
Table 2: WFNJ/TANF Families (by County)- November 2019.....	2
Table 2B: WFNJ/TANF Persons, Adults, & Children (by County)- November 2019.....	3
Table 3: TANF Work Participation Rates Over 12 Month Period (by County)- November 2019....	4
Table 4: TANF Work Participation Rates Over 12 Month Period (NJ Statewide) November 2019.	5
Table 5: NJ SNAP Households/Persons (NJ Statewide) November 2017 to 2019.....	6
Table 6: NJ SNAP Recipient Trends (NJ Statewide) November 2017 to 2019.....	7
Table 7: NJ SNAP Households/Persons (by County)- November 2019.....	8
Table 8: Emergency Assistance Program (NJ Statewide) November 2017 to 2019.....	9
Table 9: Emergency Assistance Program (by County)- November 2019.....	10
Table 10: General Assistance Program (NJ Statewide) November 2017 to 2019.....	11
Table 11: General Assistance Program (by County)- November 2019	12
Table 12: Child Support Services Distributions (NJ Statewide) FFY 2019.....	13
Table 13: Child Support Services Paternities Established- November 2019.....	14
Table 14: Child Support Services Cases With Orders- November 2019.....	15
Table 15: Child Support Services Collections On Current Support- November 2019.....	16
Table 16: Child Support Services Cases With Payments On Arrears- November 2019.....	17
Table 17: WFNJ Statistical Summary- November 2019.....	18
ACRONYMS.....	19
EXPLANATORY NOTES.....	20
WFNJ Statistical Summary (Table 17).....	20

DIVISION OF FAMILY DEVELOPMENT CURRENT PROGRAM STATISTICS NOVEMBER 2019

Each month the Division of Family Development publishes its program statistics for: WFNJ/TANF, NJ SNAP, Emergency Assistance, General Assistance, and Child Support Services. When possible, information is provided separately for children and adults. Many tables also provide trend data with information broken down by county for readers to consider. This report is compiled and prepared by The Bureau of Research & Reporting.

WFNJ/TANF

- As of the end of November, the TANF caseload had decreased by 1,373 cases, from 12,326 in November 2018 to 10,953 in November 2019, a decrease of 11.1%.
- The counties with caseloads that increased the most since November 2018 were Warren (3.8%), Cape May (15.6%) and Hunterdon (17.9%).
- The counties with caseloads that decreased the most since November 2018 were Essex (-15.5%), Cumberland (-15.7%) and Sussex (-22.2%).
- Of the WFNJ/TANF cases, 3,664 or 33.5% were child-only in November 2019.
- The counties with the most child-only cases were Camden (594), Essex (434) and Passaic (371).
- Essex (4,779), Camden (3,567), Hudson (3,334), Passaic (2,946) and Atlantic (1,778) counties had the greatest number of persons receiving TANF in November 2019.

NJ SNAP (formerly FOOD STAMPS)

- In November 2019, there were 342,240 households receiving NJ SNAP benefits. The number of NJ SNAP households decreased by 18,572 or 5.1%, since November 2018.
- There were 675,403 persons receiving NJ SNAP benefits as of November 2019, a decrease of 41,568 or 5.8% since November 2018.
- The county having the highest caseload increase since November 2018 was Sussex (0.1%).
- The counties having the highest caseload decrease since November 2018 are Atlantic (-7.6%), Burlington (7.8%) and Somerset (-8.4%).

EMERGENCY ASSISTANCE

- There were 1,555 TANF families receiving Emergency Assistance (EA) in November 2019, a decrease of 59 or 3.7% since November 2018.
- In November 2019, EA payments were made for 540 SSI recipients.

DIVISION OF FAMILY DEVELOPMENT CURRENT PROGRAM STATISTICS NOVEMBER 2019

- There were 2,076 GA cases with Emergency Assistance payments in November 2019, an increase of 155 or 8.1% since November 2018.
- The counties that showed the highest percent increase in Emergency Assistance payments were Sussex (105.6%), Salem (133.3%) and Warren (133.3%).
- The counties that showed the highest percent decrease in Emergency Assistance payments were Bergen (-14.4%), Ocean (-21.2%) and Atlantic (-45.0%).

GENERAL ASSISTANCE

- The total numbers of cases receiving GA has decreased from 10,963 to 9,888 since November 2018, a decrease of 9.8%.
- There were 3,900 Employable GA and 5,988 Unemployable GA cases in November 2019.
- The counties that showed a percent increase for GA cases were Somerset (23.6%), Sussex (26.7%) and Hunterdon (41.5%) since November 2018.
- The counties that showed the highest percent decrease for GA cases since November 2018 were Cumberland (-16.3%), Hudson (-16.9%) and Bergen (-23.4%).
- In November 2019, GA cases showed a 1.1% decrease since October 2019.

CHILD SUPPORT SERVICES (Quarterly Report)

- The total collection for the Child Support Services Program was about \$304 million from July 2019 to September 2019, an increase of 2.0 percent over the same period for FFY 2018.
- Total distributions increased 1.1% from September 2018.

WORK FIRST NEW JERSEY (WFNJ)

- During the report month of November 2019, there were 1,138 families in which at least one member was employed and an additional 175 families whose WFNJ assistance cases were closed due to employment - related earnings.
- The three counties with the greatest number of employed active WFNJ recipients were: Essex (259), Camden (135) and Hudson (130).
- There were 952 former TANF cases receiving post-TANF support in the form of child care assistance.

TABLE 1: WFNJ/TANF PROGRAM

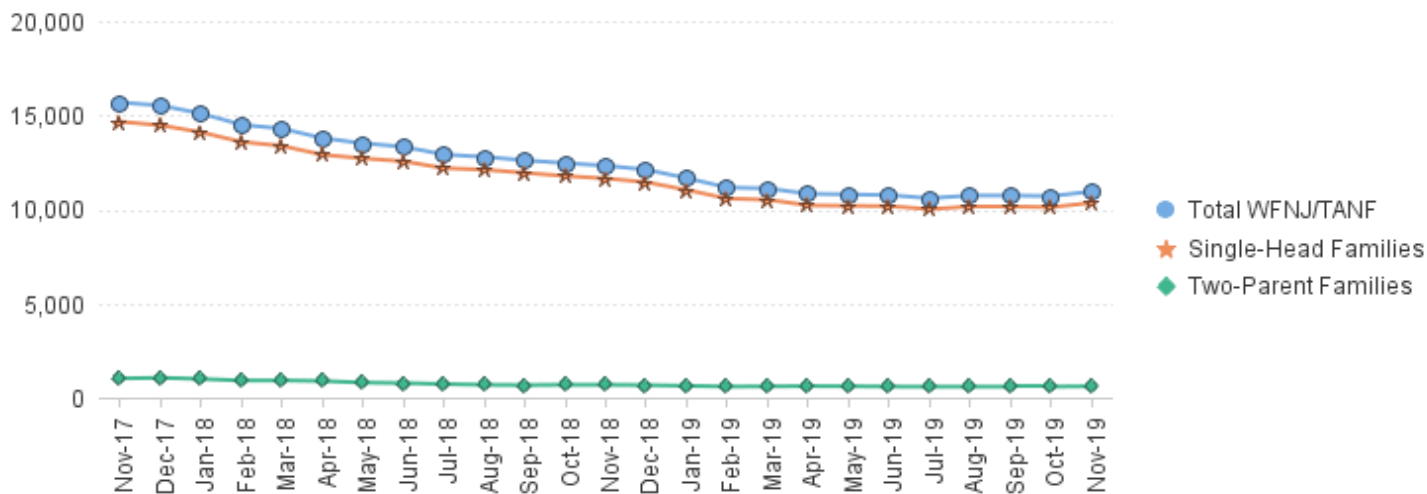
STATEWIDE NUMBER OF APPLICATIONS AND TERMINATIONS DURING NOVEMBER 2019

NUMBER OF ELIGIBLE FAMILIES & PERSONS RECEIVING WFNJ/TANF FOR NOVEMBER 2019

NOVEMBER 2017 THROUGH NOVEMBER 2019

		Cases Added	Cases Closed	Child-Only Cases ‡	Total Single-Head Families	2-Parent Families	Total WFNJ/TANF Families	%CHNG (1 Yr.)	Total Persons	%CHNG (1 Yr.)	Adults	Children
2017	NOV	1,539	1,581	4,885	14,662	1,022	15,684	-20.1%	39,534	-18.9%	11,821	27,713
	DEC	1,434	1,686	4,850	14,470	1,054	15,524	-19.2%	39,246	-17.6%	11,728	27,518
2017 Average		1,444	1,818	5,178	15,395	1,069	16,464		41,327		12,355	28,972
2018	JAN	1,289	1,706	4,770	14,103	994	15,097	-18.9%	38,222	-17.7%	11,321	26,901
	FEB	1,226	1,885	4,695	13,589	910	14,499	-19.3%	36,645	-18.2%	10,714	25,931
	MAR	1,097	1,398	4,670	13,377	918	14,295	-18.7%	35,943	-18.3%	10,543	25,400
	APR	1,050	1,548	4,610	12,905	883	13,788	-18.6%	34,557	-18.6%	10,061	24,496
	MAY	1,177	1,506	4,514	12,715	800	13,515	-17.6%	33,791	-18.0%	9,801	23,990
	JUN	1,287	1,555	4,483	12,558	773	13,331	-17.4%	33,203	-18.1%	9,621	23,582
	JUL	1,111	1,517	4,389	12,192	723	12,915	-18.6%	32,023	-19.6%	9,249	22,774
	AUG	1,241	1,440	4,349	12,114	681	12,795	-18.8%	32,848	-17.2%	9,127	23,721
	SEP	1,341	1,600	4,287	11,944	665	12,609	-19.2%	31,154	-20.7%	8,987	22,167
	OCT	1,318	1,455	4,222	11,778	683	12,461	-19.5%	31,066	-20.2%	8,922	22,144
	NOV	1,191	1,381	4,180	11,645	681	12,326	-21.4%	30,734	-22.3%	8,827	21,907
	DEC	929	1,194	4,128	11,449	664	12,113	-22.0%	30,318	-22.7%	8,649	21,669
2018 Average		1,188	1,515	4,441	12,531	781	13,312		33,375		9,652	23,724
2019	JAN	967	1,444	4,093	11,034	628	11,662	-22.8%	29,021	-24.1%	8,197	20,824
	FEB	791	1,408	3,913	10,577	589	11,166	-23.0%	27,815	-24.1%	7,842	19,973
	MAR	989	1,340	3,986	10,516	597	11,113	-22.3%	27,603	-23.2%	7,724	19,879
	APR	998	1,271	3,906	10,216	614	10,830	-21.5%	26,968	-22.0%	7,538	19,430
	MAY	1,084	1,174	3,830	10,191	606	10,797	-20.1%	26,865	-20.5%	7,573	19,292
	JUN	1,024	1,135	3,790	10,175	588	10,763	-19.3%	26,674	-19.7%	7,561	19,113
	JUL	1,040	1,231	3,710	10,014	580	10,594	-18.0%	26,323	-17.8%	7,464	18,859
	AUG	1,209	1,135	3,723	10,158	582	10,740	-16.1%	26,735	-18.6%	7,599	19,136
	SEP	1,055	1,048	3,679	10,153	586	10,739	-14.8%	26,803	-14.0%	7,646	19,157
	OCT	1,137	1,253	3,556	10,120	586	10,706	-14.1%	26,933	-13.3%	7,736	19,197
	NOV	1,181	1,159	3,664	10,348	605	10,953	-11.1%	27,644	-10.1%	7,894	19,750
2019 AVG to date		1,043	1,236	3,805	10,318	596	10,915		27,217		7,707	19,510

NJ STATEWIDE
Eligible Families Receiving WFNJ/TANF
NOVEMBER 2017 THROUGH NOVEMBER 2019



Data is derived from NJ MMIS Shared Data Warehouse Issuance files.
Effective July 2013 this data query source was converted to the SDW

‡ Child-only cases are defined as families in which no eligible adult receives TANF program benefits, yet the family continues to be headed by at least one of the biological parents, or grandparents, or other appropriate adult.

TABLE 2:

WFNJ/TANF

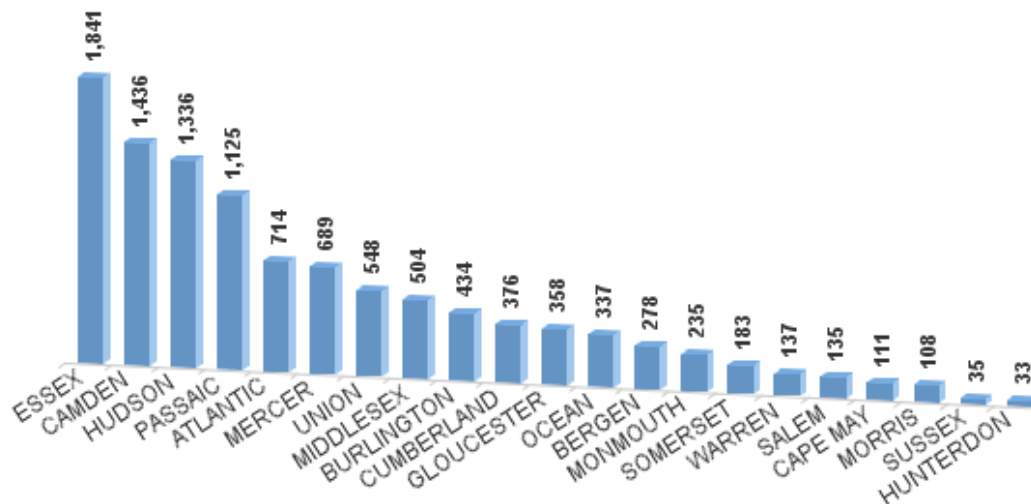
NUMBER OF APPLICATIONS AND TERMINATIONS BY COUNTY DURING NOVEMBER 2019

PROGARM

NUMBER OF ELIGIBLE FAMILIES RECEIVING WFNJ/TANF FOR NOVEMBER 2019

County	Cases Added	Cases Closed **	Child-Only	1-Adult	Total Single-Head	Total 2-Parent	Total WFNJ/TANF	%CHNG (3 Mon)	%CHNG (1 Yr.)
			Cases ‡	Cases	Families	Families	Families		
ATLANTIC	61	58	295	382	677	37	714	4.4%	-12.5%
BERGEN	35	30	63	188	251	27	278	5.3%	-5.4%
BURLINGTON	56	44	145	269	414	20	434	5.3%	-7.1%
CAMDEN	117	125	594	791	1,385	51	1,436	1.7%	-13.4%
CAPE MAY	16	7	42	64	106	5	111	19.4%	15.6% Δ
CUMBERLAND	32	30	163	184	347	29	376	3.3%	-15.7% *
ESSEX	340	278	434	1,317	1,751	90	1,841	1.8%	-15.5% *
GLOUCESTER	27	20	146	200	346	12	358	9.1%	-4.8%
HUDSON	145	168	374	880	1,254	82	1,336	-2.6%	-13.4%
HUNTERDON	3	0	11	19	30	3	33	26.9%	17.9% Δ
MERCER	48	68	250	412	662	27	689	-1.3%	-5.2%
MIDDLESEX	47	54	200	270	470	34	504	3.1%	-5.8%
MONMOUTH	23	24	94	130	224	11	235	5.9%	-14.2%
MORRIS	12	8	28	64	92	16	108	5.9%	-4.4%
OCEAN	33	30	107	216	323	14	337	3.7%	-0.6%
PASSAIC	79	96	371	704	1,075	50	1,125	0.4%	-14.1%
SALEM	24	30	60	67	127	8	135	-6.3%	-8.8%
SOMERSET	17	13	57	115	172	11	183	8.9%	-8.5%
SUSSEX	6	3	13	17	30	5	35	9.4%	-22.2% *
UNION	43	57	185	305	490	58	548	2.4%	-8.8%
WARREN	17	16	32	90	122	15	137	-1.4%	3.8% Δ
NJ Total	1,181	1,159	3,664	6,684	10,348	605	10,953	2.0%	-11.1%

Total WFNJ/TANF Families
NOVEMBER 2019
By County



Data is derived from NJ MMIS Shared Data Warehouse Issuance files.
Effective July 2013 this data query source was converted to the SDW

‡ Child-only cases are defined as families in which no eligible adult receives TANF program benefits, yet the family continues to be headed by at least one of the biological parents, or grandparents, or other appropriate adult

** 'Cases closed' include cases that received a benefit in the prior month, but did not receive any TANF benefit for the report month.

Δ=higher caseload % change

*=lower caseload % change

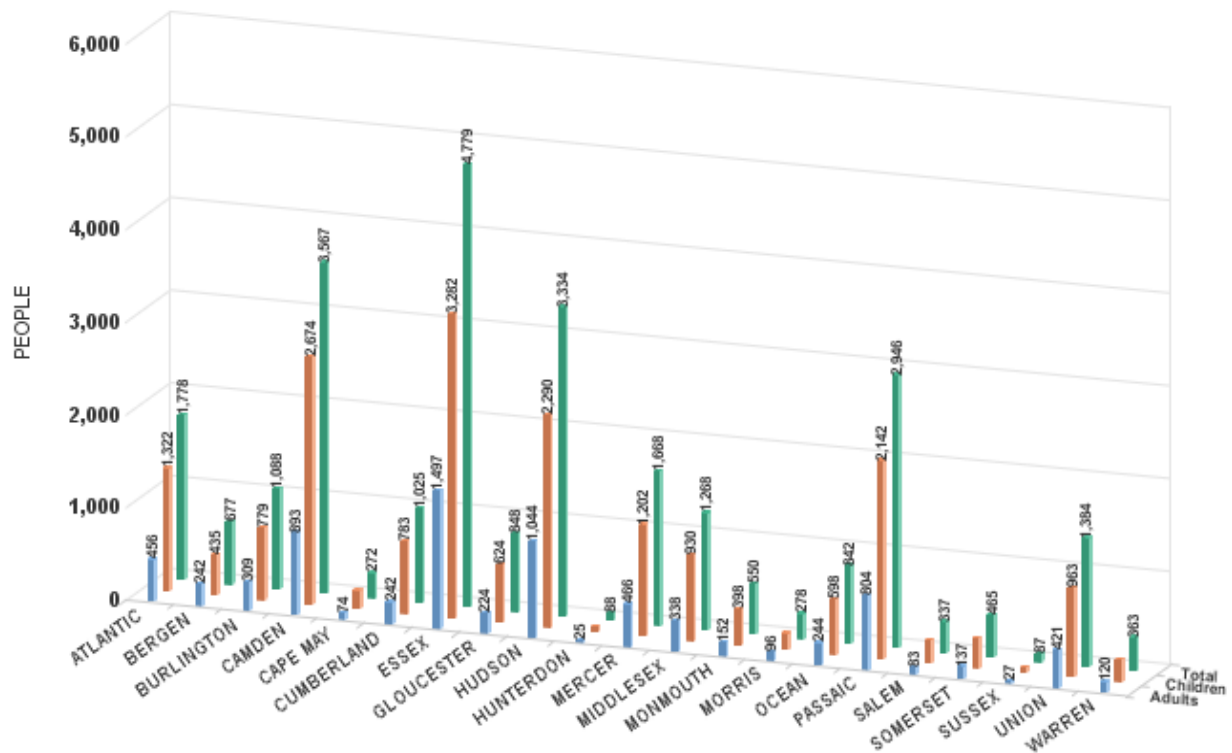
TABLE 2B :

WFNJ/TANF
PROGARMNUMBER OF PARTICIPATING PERSONS, ADULTS, AND CHILDREN
BY COUNTY FOR NOVEMBER 2019**PERSONS**

County	Adults	Children	Child/Adult Ratio	Total Persons	% Chng (1 Yr)	Persons Per Case
ATLANTIC	456	1,322	2.90	1,778	-11.8%	2.49
BERGEN	242	435	1.80	677	-5.7%	2.44
BURLINGTON	309	779	2.52	1,088	-5.7%	2.51
CAMDEN	893	2,674	2.99	3,567	-11.9%	2.48
CAPE MAY	74	198	2.68	272	19.8% Δ	2.45
CUMBERLAND	242	783	3.24	1,025	-13.1% *	2.73
ESSEX	1,497	3,282	2.19	4,779	-12.8%	2.60
GLOUCESTER	224	624	2.79	848	-6.6%	2.37
HUDSON	1,044	2,290	2.19	3,334	-11.9%	2.50
HUNTERDON	25	63	2.52	88	23.9% Δ	2.67
MERCER	466	1,202	2.58	1,668	-5.1%	2.42
MIDDLESEX	338	930	2.75	1,268	-1.3%	2.52
MONMOUTH	152	398	2.62	550	-12.3%	2.34
MORRIS	96	182	1.90	278	-1.1%	2.57
OCEAN	244	598	2.45	842	-1.8%	2.50
PASSAIC	804	2,142	2.66	2,946	-15.9% *	2.62
SALEM	83	254	3.06	337	-8.9%	2.50
SOMERSET	137	328	2.39	465	-4.5%	2.54
SUSSEX	27	60	2.22	87	-20.9% *	2.49
UNION	421	963	2.29	1,384	-8.9%	2.53
WARREN	120	243	2.03	363	4.6% Δ	2.65
NJ Total	7,894	19,750	2.50	27,644	-10.1%	2.52

Δ=higher caseload % change

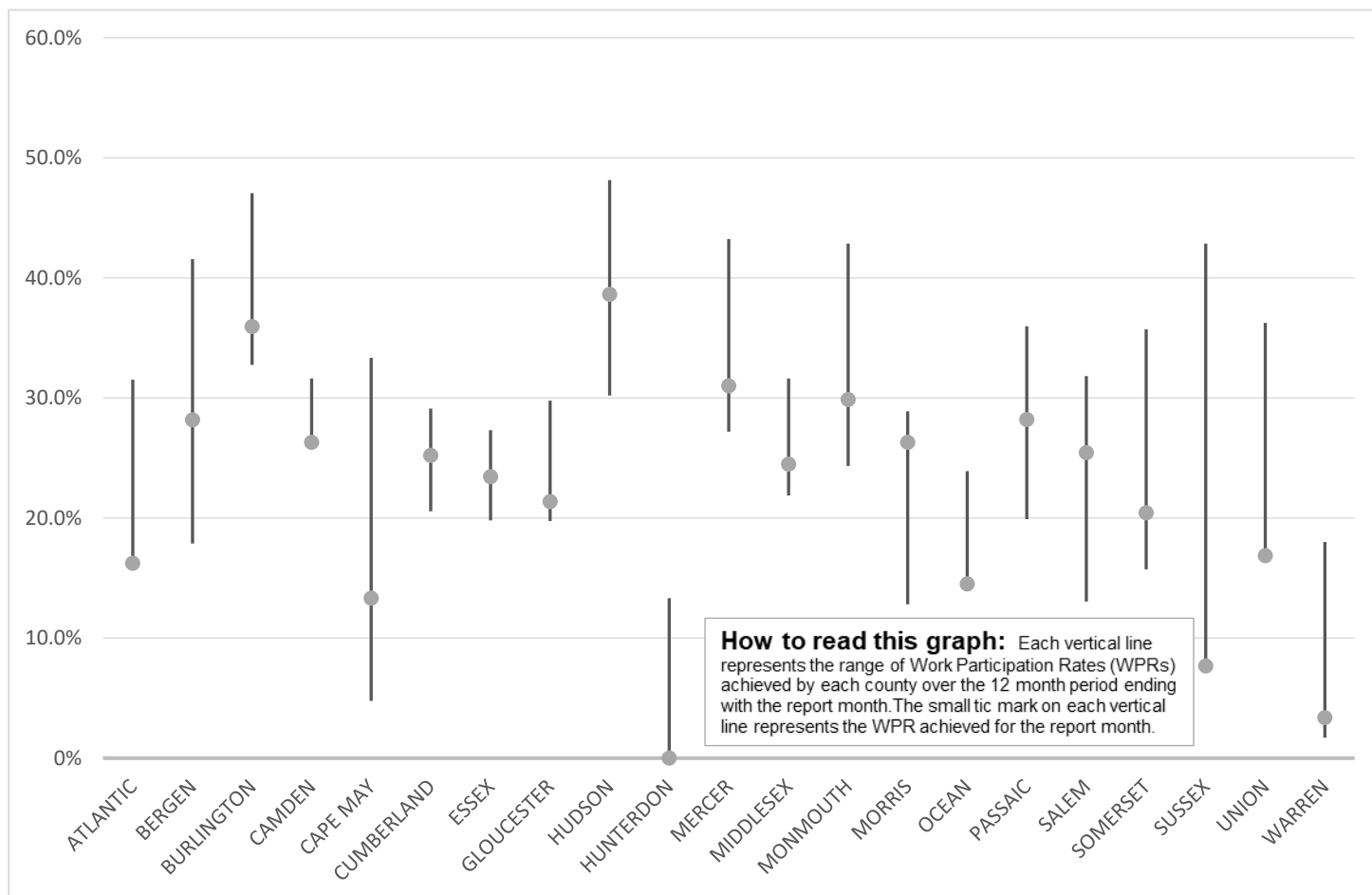
*=lower caseload % change



Data is derived from NJ MMIS Shared Data Warehouse Issuance files.
Effective July 2013 this data query source was converted to the SDW

TABLE 3 :

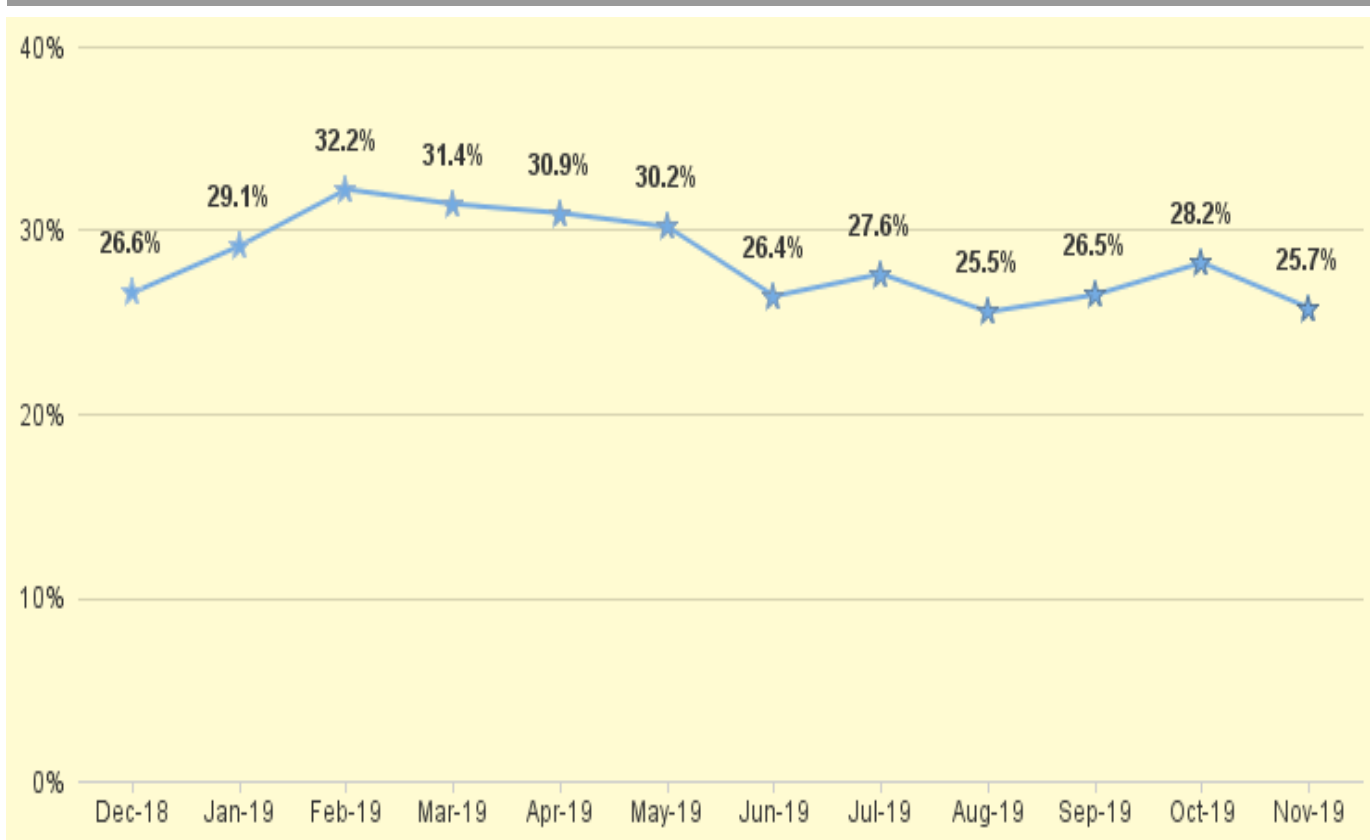
**Work Participation Rates Achieved Over 12 Month Period
Ending with NOVEMBER 2019**



Data is derived from NJ MMIS Shared Data Warehouse Issuance files.
Effective July 2013 this data query source was converted to the SDW

TABLE 4 :

**WFNJ/TANF Work Participation Rates
for 12-Month Period Ending with NOVEMBER 2019 Statewide**



* The Work Participation rate measures the number of countable Temporary Assistance for Needs Families (TANF) participants based on federal formula. The reported rate is considered to be preliminary until officially calculated by the federal government soon after the close of each federal fiscal year.

TABLE 5 :

NJ SNAP

NUMBER OF PARTICIPATING HOUSEHOLDS, PERSONS, ADULTS

(FOOD STAMPS)

AND CHILDREN FOR NOVEMBER 2019 (STATEWIDE)

NOVEMBER 2017 THROUGH NOVEMBER 2019

		HOUSEHOLDS				PERSONS				Age 60+	People with a disability
		WFNJ/ TANF	Other low income	Total	% CHNG (1 YR)	Adults	Children	TOTAL	% CHNG (1 YR)		
2017	NOV	14,783	370,436	385,219	-8.0%	403,158	364,706	767,864	-8.1%	130,391	219,210
	DEC	14,648	371,916	386,564	-7.4%	404,418	367,199	771,617	-7.4%	130,292	222,460
2017	Average	15,509	379,521	395,030		413,501	374,531	788,032		131,220	220,759
2018	JAN	13,996	366,670	380,666	-6.9%	398,026	360,502	758,528	-7.1%	128,879	218,735
	FEB	13,566	364,750	378,316	-6.7%	395,314	357,938	753,252	-7.0%	128,094	217,046
	MAR	13,362	366,128	379,490	-5.8%	396,620	360,051	756,671	-5.9%	127,792	216,741
	APR	12,787	360,385	373,172	-7.0%	390,319	353,157	743,476	-7.2%	126,571	214,558
	MAY	12,646	358,605	371,251	-6.4%	388,870	351,724	740,594	-6.4%	125,945	213,705
	JUN	12,636	360,531	373,167	-5.5%	391,455	353,883	745,338	-5.3%	130,916	213,689
	JUL	12,142	355,160	367,302	-6.3%	385,535	346,628	732,163	-6.3%	129,767	211,396
	AUG	12,162	354,922	367,084	-6.1%	385,645	345,658	731,303	-6.2%	129,230	210,919
	SEP	11,978	355,023	367,001	-6.0%	386,047	344,801	730,848	-6.2%	128,684	210,278
	OCT	11,828	351,057	362,885	-5.8%	381,993	339,837	721,830	-5.8%	127,534	208,715
	NOV	11,524	349,288	360,812	-6.3%	380,136	336,835	716,971	-6.6%	126,941	208,324
	DEC	11,056	347,269	358,325	-7.3%	377,967	334,264	712,231	-7.7%	126,299	210,239
2018	Average	12,474	357,482	369,956		388,161	348,773	736,934		128,054	212,862
2019	JAN	11,080	347,492	358,572	-5.8%	378,698	333,780	712,478	-6.1%	125,563	208,860
	FEB	9,524	325,936	335,460	-11.3%	354,132	303,701	657,833	-12.7%	121,511	199,781
	MAR	10,469	341,314	351,783	-7.3%	372,223	325,898	698,121	-7.7%	123,658	205,933
	APR	10,136	336,819	346,955	-7.0%	367,367	319,361	686,728	-7.6%	122,716	204,624
	MAY	10,284	337,321	347,605	-6.4%	368,192	319,432	687,624	-7.2%	122,594	203,974
	JUN	10,149	336,301	346,450	-7.2%	367,279	317,566	684,845	-8.1%	122,060	203,512
	JUL	9,962	333,891	343,853	-6.4%	365,264	314,222	679,486	-7.2%	121,238	202,824
	AUG	10,570	336,384	346,954	-5.5%	368,890	317,373	686,263	-6.2%	121,200	203,620
	SEP	10,319	331,162	341,481	-7.0%	363,290	310,676	673,966	-7.8%	120,200	202,119
	OCT	10,242	328,140	338,382	-6.8%	360,298	305,917	666,215	-7.7%	119,254	200,853
	NOV	10,580	331,660	342,240	-5.1%	364,880	310,523	675,403	-5.8%	119,560	202,867
2019	AVG to date	10,301	335,129	345,430		366,410	316,223	682,633		121,778	203,542

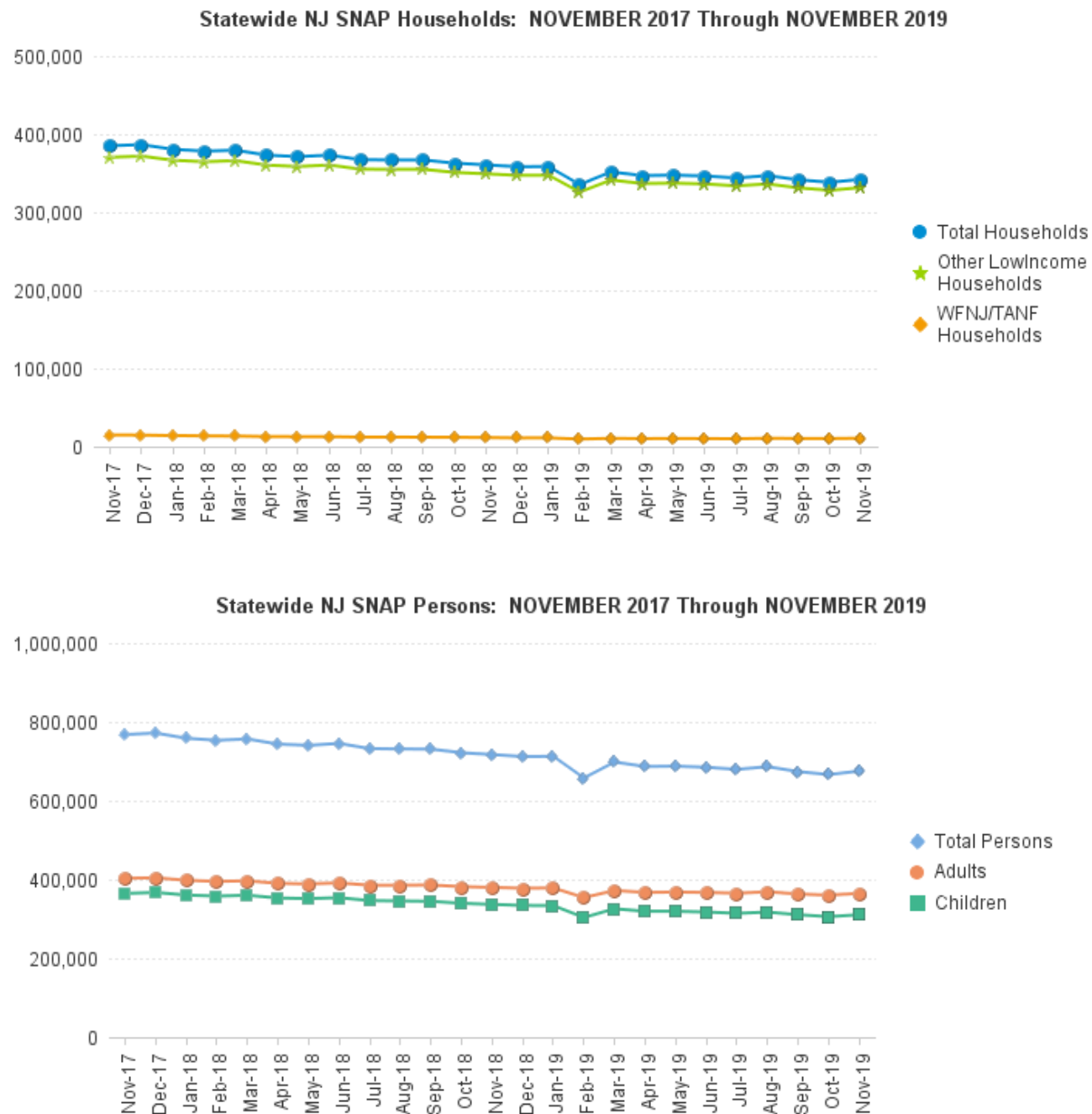
This Table is based on those Households & Persons that received SNAP issuances (benefits) during the month

Data is derived from NJ MMIS Shared Data Warehouse.

Effective July 2013 this data query source was converted to the SDW.

* Age 60+ and People with a disability columns are independent subsets of total persons. An individual might appear in both columns.

**TABLE 6: NJ SNAP (FOOD STAMPS)
TRENDS FOR PARTICIPATING HOUSEHOLDS & PERSONS
NOVEMBER 2017 THROUGH NOVEMBER 2019 (STATEWIDE)**



Data is derived from NJ MMIS Shared Data Warehouse Issuance files.

Effective July 2013 this data query source was converted to the SDW

TABLE 7 :

NJ SNAP

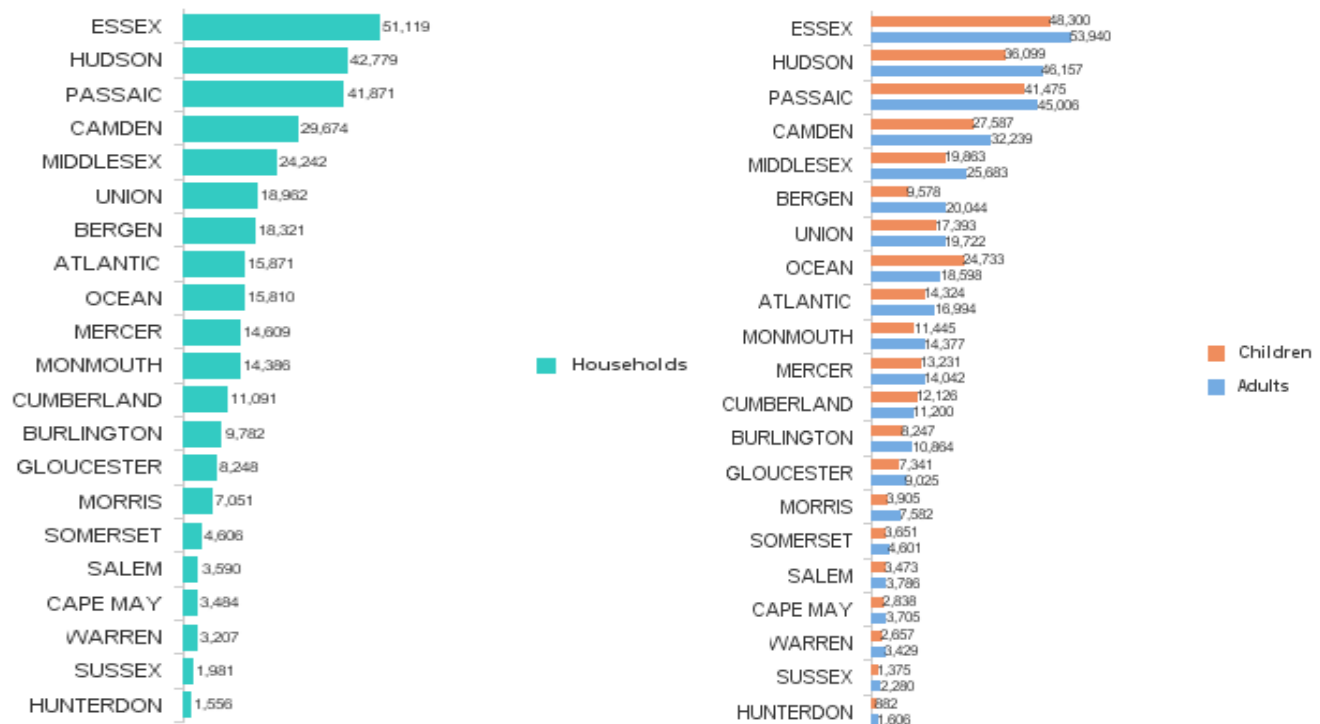
**NUMBER OF PARTICIPATING HOUSEHOLDS, PERSONS, ADULTS
AND CHILDREN BY COUNTY FOR NOVEMBER 2019**

County	HOUSEHOLDS				PERSONS					
	WFNJ/ TANF	Other low income	TOTAL	% Chng (1 Yr)	Adults	Children	TOTAL	% Chng (1 Yr)	Age 60+	People with a disability
ATLANTIC	642	15,229	15,871	-7.6% *	16,994	14,324	31,318	-8.6% *	4,605	9,051
BERGEN	268	18,053	18,321	-5.3%	20,044	9,578	29,622	-7.7%	11,497	14,372
BURLINGTON	426	9,356	9,782	-7.8% *	10,864	8,247	19,111	-8.0% *	2,685	6,219
CAMDEN	1,336	28,338	29,674	-3.8%	32,239	27,587	59,826	-3.6%	7,516	17,157
CAPE MAY	104	3,380	3,484	-4.5%	3,705	2,838	6,543	-4.7%	996	2,157
CUMBERLAND	368	10,723	11,091	-7.0%	11,200	12,126	23,326	-7.3%	2,660	6,632
ESSEX	2,001	49,118	51,119	-4.9%	53,940	48,300	102,240	-5.7%	14,419	26,451
GLOUCESTER	296	7,952	8,248	-1.8% Δ	9,025	7,341	16,366	-3.4%	2,158	5,492
HUDSON	1,254	41,525	42,779	-6.7%	46,157	36,099	82,256	-7.3%	17,265	25,167
HUNTERDON	33	1,523	1,556	-0.1% Δ	1,606	882	2,488	-0.2% Δ	535	994
MERCER	680	13,929	14,609	-2.4%	14,042	13,231	27,273	-2.6%	3,972	9,206
MIDDLESEX	486	23,756	24,242	-5.3%	25,683	19,863	45,546	-6.6%	11,865	16,214
MONMOUTH	220	14,166	14,386	-5.9%	14,377	11,445	25,822	-7.3%	5,272	8,962
MORRIS	98	6,953	7,051	-5.0%	7,582	3,905	11,487	-6.8%	3,902	5,016
OCEAN	326	15,484	15,810	-3.5%	18,598	24,733	43,331	-3.6%	4,987	9,477
PASSAIC	1,092	40,779	41,871	-4.6%	45,006	41,475	86,481	-5.0%	13,710	20,147
SALEM	128	3,462	3,590	-2.9%	3,786	3,473	7,259	-1.3% Δ	843	2,218
SOMERSET	169	4,437	4,606	-8.4% *	4,601	3,651	8,252	-8.4% *	1,992	3,112
SUSSEX	43	1,938	1,981	0.1% Δ	2,280	1,375	3,655	2.4% Δ	699	1,509
UNION	489	18,473	18,962	-5.6%	19,722	17,393	37,115	-6.9%	7,030	11,127
WARREN	121	3,086	3,207	-3.4%	3,429	2,657	6,086	-4.6%	952	2,187
NJ TOTAL	10,580	331,660	342,240	-5.1%	364,880	310,523	675,403	-5.8%	119,560	202,867

Δ=higher caseload % change

*=lower caseload % change

**Total NJ SNAP Recipients
NOVEMBER 2019 by County**



Data is derived from NJ MMIS Shared Data Warehouse.
Effective July 2013 this data query source was converted to the SDW.

* Age 60+ and People with a disability columns are independent subsets of total persons. An individual might appear in both columns.

TABLE 8 :

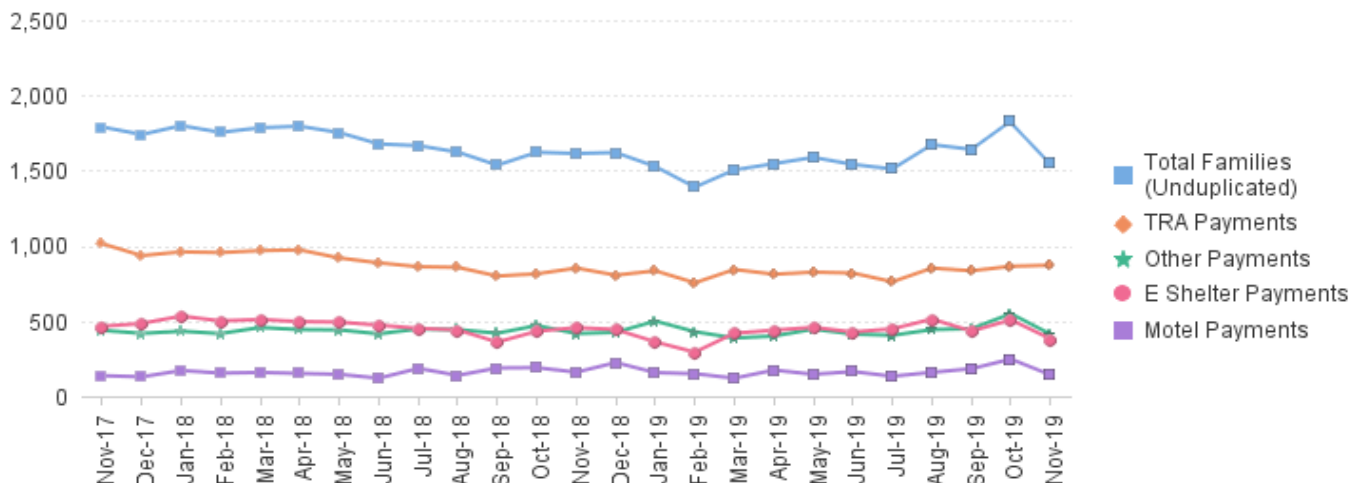
EMERGENCY ASSISTANCE (STATEWIDE)

TOTAL NUMBER OF ELIGIBLE FAMILIES RECEIVING EMERGENCY ASSISTANCE PAYMENTS

NOVEMBER 2017 THROUGH NOVEMBER 2019 - STATEWIDE

		Total WFNJ/EA Families		Temp Rent Asst. Payments		Motel Housing Payments		Shelter/Transitional Housing Payments		Other WFNJ/EA Payments	
		(Undupl)	% CHNG (1 YR)	(Undupl)	% CHNG (1 YR)	(Undupl)	% CHNG (1 YR)	(Undupl)	% CHNG (1 YR)	(Undupl)	% CHNG (1 YR)
2017	NOV	1,790	-30.3%	1,014	-36.7%	137	-19.9%	465	-6.4%	438	-26.0%
	DEC	1,740	-29.2%	935	-39.6%	129	-21.8%	484	-1.4%	418	-28.8%
2017	Average	2,021		1,185		134		491		468	
2018	JAN	1,799	-24.0%	960	-35.0%	171	-6.6%	533	9.2%	432	-15.3%
	FEB	1,754	-20.7%	955	-30.6%	154	27.3%	501	0.8%	417	-11.8%
	MAR	1,785	-23.4%	968	-31.1%	158	-4.2%	510	-1.4%	457	-16.3%
	APR	1,795	-13.6%	973	-26.4%	152	12.6%	496	11.2%	443	1.8%
	MAY	1,753	-15.0%	919	-27.1%	146	10.6%	493	3.6%	441	-0.2%
	JUN	1,677	-18.5%	887	-24.7%	120	-8.4%	473	-3.5%	415	-14.6%
	JUL	1,666	-12.1%	861	-23.7%	185	46.8%	451	-5.1%	447	18.3%
	AUG	1,623	-17.9%	857	-21.3%	139	20.9%	441	-18.2%	443	-6.9%
	SEP	1,536	-18.2%	799	-23.3%	188	52.8%	360	-25.0%	419	-17.5%
	OCT	1,622	-13.1%	814	-17.7%	190	66.7%	432	-19.4%	470	-7.8%
	NOV	1,614	-9.8%	852	-16.0%	160	16.8%	456	-1.9%	417	-4.8%
	DEC	1,620	-6.9%	805	-13.9%	224	73.6%	444	-8.3%	425	1.7%
2018	Average	1,687		888		166		466		436	
2019	JAN	1,527	-15.1%	834	-13.1%	157	-8.2%	361	-32.3%	500	15.7%
	FEB	1,390	-20.8%	754	-21.0%	150	-2.6%	293	-41.5%	429	2.9%
	MAR	1,505	-15.7%	843	-12.9%	120	-24.1%	419	-17.8%	387	-15.3%
	APR	1,546	-13.9%	811	-16.6%	174	14.5%	439	-11.5%	400	-9.7%
	MAY	1,588	-9.4%	825	-10.2%	146	0.0%	458	-7.1%	446	1.1%
	JUN	1,541	-8.1%	819	-7.7%	164	36.7%	427	-9.7%	413	-0.5%
	JUL	1,511	-9.3%	761	-11.6%	133	-28.1%	448	-0.7%	405	-9.4%
	AUG	1,673	3.1%	852	-0.6%	159	14.4%	513	16.3%	443	0.0%
	SEP	1,641	6.8%	834	4.4%	183	-2.7%	433	20.3%	449	7.2%
	OCT	1,830	12.8%	864	6.1%	247	30.0%	508	17.6%	549	16.8%
	NOV	1,555	-3.7%	871	2.2%	142	-11.3%	382	-16.2%	413	-1.0%
2019	AVG to date	1,573		824		161		426		439	

NJ STATEWIDE
Families Receiving Emergency Assistance
NOVEMBER 2017 THROUGH NOVEMBER 2019



WFNJ/EA data is derived from NJ MMIS Shared Data Warehouse.

Effective July 2013 this data query source was converted to the SDW.

* Effective Feb '11 Transitional Housing Payments were removed from 'Other EA Payments' and added to 'Shelter Payments'.

TABLE 9 :

EMERGENCY ASSISTANCE (BY COUNTY) **TOTAL NUMBER OF ELIGIBLE FAMILIES RECEIVING EMERGENCY ASSISTANCE PAYMENTS BY COUNTY (UNDUPLICATED CASES) FOR NOVEMBER 2019**

County	TOTAL WFNJ/EA Families (Undupl)	% CHNG From NOV 18	Temp Rent Asst. Payments (Undupl)	Motel Housing Payments (Undupl)	Shelter/Transitional Housing Payments (Undupl)	Other WFNJ/EA Payments (Undupl)	SSI Recipients Receiving EA **
ATLANTIC	111	23.3%	80	4	0	48	114
BERGEN	64	28.0%	28	0	23	20	13
BURLINGTON	81	-22.1%	11	13	56	4	16
CAMDEN	55	-34.5% *	17	11	26	14	17
CAPE MAY	24	60.0% Δ	12	11	0	3	13
CUMBERLAND	5	66.7% Δ	1	0	3	3	0
ESSEX	211	-28.0% *	82	0	116	27	11
GLOUCESTER	27	17.4%	10	1	11	10	7
HUDSON	189	-10.8%	154	1	18	51	30
HUNTERDON	9	800.0% Δ	6	0	1	2	1
MERCER	89	-3.3%	37	19	22	33	48
MIDDLESEX	101	4.1%	51	9	14	55	29
MONMOUTH	10	-16.7%	3	2	1	6	9
MORRIS	31	10.7%	11	13	5	8	13
OCEAN	81	20.9%	52	27	2	24	30
PASSAIC	261	-4.0%	209	1	38	34	59
SALEM	5	-37.5% *	0	0	2	3	6
SOMERSET	69	16.9%	37	8	17	30	60
SUSSEX	2	0%	0	2	0	1	3
UNION	108	20.0%	57	17	26	26	59
WARREN	22	57.1%	13	3	1	11	2
NJ Total	1,555	-3.7%	871	142	382	413	540

Δ=higher caseload % change

*=lower caseload % change

** SSI-EA includes pay codes 22 and 24, data is derived from NJ Division of Family Development FAMIS Report #FM430-03A

WFNJ/EA data is derived from NJ MMIS Shared Data Warehouse.

Effective July 2013 this data query source was converted to the SDW.

**Number WFNJ Families Receiving EA by County
NOVEMBER 2019**

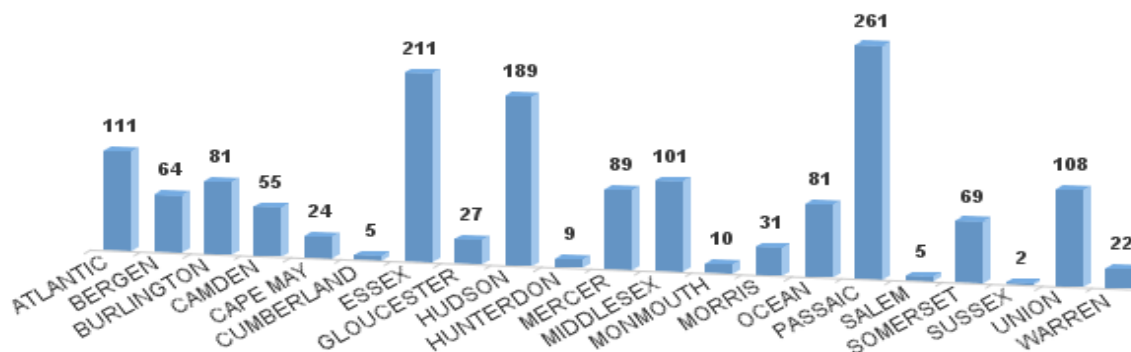
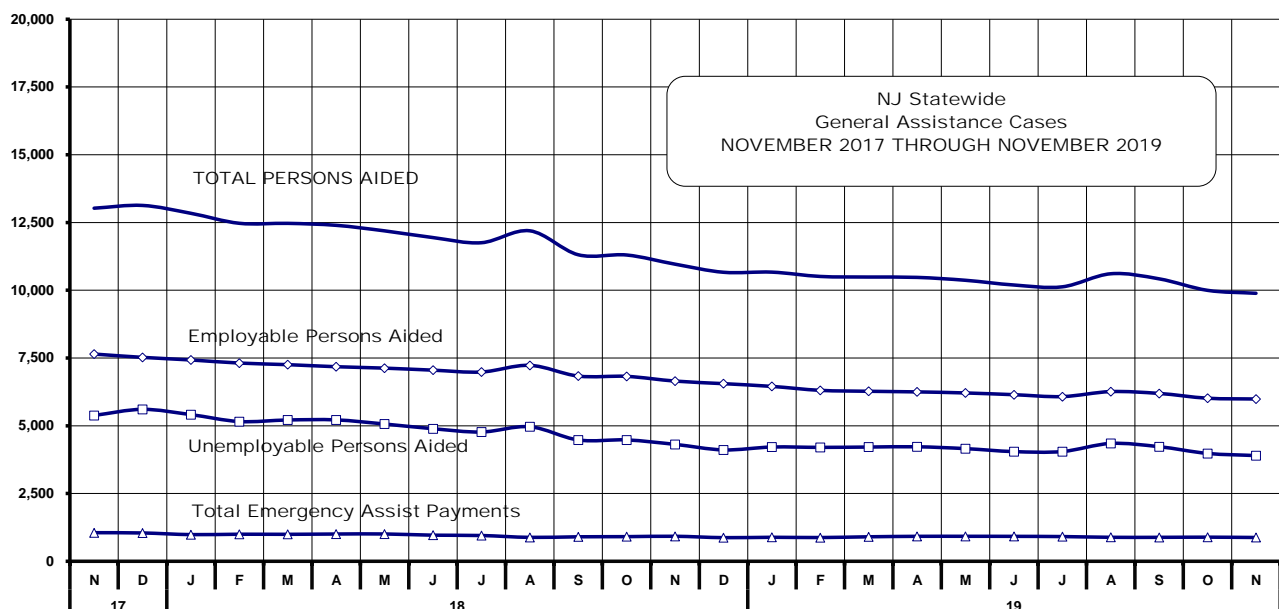


Table 10
GENERAL ASSISTANCE PROGRAM
**NUMBER OF EMPLOYABLE AND UNEMPLOYABLE RECIPIENTS
AND EMERGENCY ASSISTANCE PAYMENTS FOR NOVEMBER 2019 - STATEWIDE**
NOVEMBER 2017 THROUGH NOVEMBER 2019

	Total Cases						Emergency Assistance Cases			
	Employable	% Chng (1 Yr)	Unemployable	% Chng (1 Yr)	Total	% Chng (1 Yr)	Temporary Rental Assistance	Other GA-EA	Total	% Chng (1 Yr)
2017 NOV	5,382	-24.0%	7,646	-15.9%	13,028	-19.5%	1,055	936	1,991	-26.2%
DEC	5,606	-17.8%	7,524	-15.8%	13,130	-16.7%	1,045	1,059	2,104	-17.5%
2017 AVERAGE	5,932		8,219		14,151		1,178	1,118	2,296	
2018 JAN	5,411	-17.4%	7,428	-15.3%	12,839	-16.2%	984	1,113	2,097	-16.6%
FEB	5,157	-19.8%	7,314	-15.6%	12,471	-17.4%	999	1,069	2,068	-12.9%
MAR	5,214	-19.2%	7,255	-16.6%	12,469	-17.7%	995	1,055	2,050	-15.9%
APR	5,217	-16.8%	7,179	-15.4%	12,396	-16.0%	1,006	1,210	2,216	-8.1%
MAY	5,065	-17.0%	7,127	-15.2%	12,192	-16.0%	1,008	1,151	2,159	-10.3%
JUN	4,892	-18.9%	7,052	-15.6%	11,944	-16.9%	963	1,053	2,016	-16.2%
JUL	4,770	-15.9%	6,984	-14.6%	11,754	-15.1%	951	1,066	2,017	-7.4%
AUG	4,964	-13.7%	7,230	-11.0%	12,194	-12.1%	882	1,122	2,004	-14.2%
SEP	4,476	-18.0%	6,834	-13.5%	11,310	-15.3%	904	1,054	1,958	-8.2%
OCT	4,478	-18.0%	6,823	-13.4%	11,301	-15.3%	909	1,079	1,988	-12.2%
NOV	4,314	-19.8%	6,649	-13.0%	10,963	-15.9%	923	998	1,921	-3.5%
DEC	4,110	-26.7%	6,554	-12.9%	10,664	-18.8%	872	1,007	1,879	-10.7%
2018 AVERAGE	4,839		7,036		11,875		950	1,081	2,031	
2019 JAN	4,216	-22.1%	6,453	-13.1%	10,669	-16.9%	886	1,018	1,904	-9.2%
FEB	4,203	-18.5%	6,307	-13.8%	10,510	-15.7%	876	1,023	1,899	-8.2%
MAR	4,215	-19.2%	6,273	-13.5%	10,488	-15.9%	904	1,077	1,981	-3.4%
APR	4,225	-19.0%	6,250	-12.9%	10,475	-15.5%	921	1,244	2,165	-2.3%
MAY	4,157	-17.9%	6,211	-12.9%	10,368	-15.0%	922	1,923	2,845	31.8%
JUN	4,047	-17.3%	6,147	-12.8%	10,194	-14.7%	920	1,166	2,086	3.5%
JUL	4,050	-15.1%	6,077	-13.0%	10,127	-13.8%	912	1,082	1,994	-1.1%
AUG	4,348	-12.4%	6,261	-13.4%	10,609	-13.0%	885	1,210	2,095	4.5%
SEP	4,228	-5.5%	6,193	-9.4%	10,421	-7.9%	884	1,275	2,159	10.3%
OCT	3,980	-11.1%	6,017	-11.8%	9,997	-11.5%	890	1,319	2,209	11.1%
NOV	3,900	-9.6%	5,988	-9.9%	9,888	-9.8%	878	1,198	2,076	8.1%
2019 AVG to date	4,143		6,198		10,341		898	1,230	2,128	



Source: NJ Division of Family Development, GA Fiscal Unit

TABLE 11
GENERAL
ASSISTANCE
PROGRAM

**EMPLOYABLE AND UNEMPLOYABLE CASES
AND EMERGENCY ASSISTANCE CASES RECEIVING PAYMENTS BY COUNTY**

NOVEMBER 2019

County	Total Cases						Emergency Assistance Cases			
	Employable	% Chng (From Nov 18)	Unemployable	% Chng (From Nov 18)	Total	% Chng (From Nov 18)	Temporary Rental Assist.	Other GA-EA	Total	% Chng (From Nov 18)
ATLANTIC	359	-17.1%	280	-12.5%	639	-15.1%	57	26	83	-45.0% *
BERGEN	206	-8.8%	361	-29.8%	567	-23.4% *	105	32	137	-14.4% *
BURLINGTON	167	-22.0%	358	-11.6%	525	-15.2%	25	164	189	18.1%
CAMDEN	421	-9.9%	629	-13.2%	1,050	-11.9%	60	93	153	7.0%
CAPE MAY	60	-7.7%	65	-18.8%	125	-13.8%	16	40	56	-6.7%
CUMBERLAND	168	-16.4%	202	-16.2%	370	-16.3% *	0	10	10	25.0%
ESSEX	705	-5.4%	534	16.6%	1,239	3.0%	41	208	249	64.9%
GLOUCESTER	126	18.9%	198	-16.8%	324	-5.8%	11	31	42	20.0%
HUDSON	353	-12.8%	699	-18.8%	1,052	-16.9% *	73	74	147	9.7%
HUNTERDON	69	38.0%	81	44.6%	150	41.5% Δ	11	16	27	-10.0%
MERCER	162	-16.5%	416	-14.4%	578	-15.0%	38	47	85	-14.1%
MIDDLESEX	162	-16.1%	379	-1.0%	541	-6.1%	84	94	178	40.2%
MONMOUTH	69	-30.3%	202	11.0%	271	-3.6%	0	45	45	95.7%
MORRIS	99	-16.1%	179	-16.0%	278	-16.0%	75	35	110	-6.0%
OCEAN	185	14.9%	285	-1.4%	470	4.4%	61	47	108	-21.2% *
PASSAIC	131	-15.5%	527	-12.6%	658	-13.2%	88	25	113	-0.9%
SALEM	22	-29.0%	69	-2.8%	91	-10.8%	3	4	7	133.3% Δ
SOMERSET	91	30.0%	87	17.6%	178	23.6% Δ	38	47	85	70.0%
SUSSEX	51	24.4%	44	29.4%	95	26.7% Δ	0	37	37	105.6% Δ
UNION	197	-21.5%	276	-9.5%	473	-14.9%	69	83	152	-12.6%
WARREN	97	9.0%	117	5.4%	214	7.0%	23	40	63	133.3% Δ
NJ TOTAL	3,900	-9.6%	5,988	-9.9%	9,888	-9.8%	878	1,198	2,076	8.1%

Δ = ↑ Caseload %

* = ↓ Caseload %

Source: NJ Division of Family Development, GA Fiscal Unit

TABLE 12
OFFICE OF CHILD
SUPPORT
SERVICES

OFFICE OF CHILD SUPPORT SERVICES

Quarterly Performance Report

State Summary

TITLE IV-D SOURCE COLLECTION REPORT

Comparison of Quarter-4 (FFY 18 vs. FFY 19)

COLLECTION SOURCE	TOTAL 7/1/2018 - 9/30/2018	% OF TOTAL COLLECTIONS	TOTAL 7/1/2019 - 9/30/2019	% OF TOTAL COLLECTIONS	DOLLAR CHANGE	% CHANGE
FEDERAL TAX	\$ 1,479,724	0.50%	\$ 1,869,980	0.61%	\$ 390,256	26.37%
STATE TAX	\$ 2,167,780	0.73%	\$ 2,331,443	0.77%	\$ 163,663	7.55%
UIB	\$ 6,126,839	2.05%	\$ 6,507,378	2.14%	\$ 380,539	6.21%
INC WITHHOLD	\$ 209,595,891	70.23%	\$ 213,858,362	70.26%	\$ 4,262,471	2.03%
FROM OTHER STATES	\$ 11,861,017	3.97%	\$ 11,955,752	3.93%	\$ 94,735	0.80%
ADMIN ENFORCEMENT	\$ 3,683,272	1.23%	\$ 4,430,431	1.46%	\$ 747,159	20.29%
OTHER	\$ 63,547,795	21.29%	\$ 63,439,467	20.84%	\$ (108,328)	-0.17%
TOTAL COLLECTIONS*	\$ 298,462,318	100%	\$ 304,392,813	100%	\$ 5,930,495	1.99%
DISBURSED COLLECTIONS**	\$ 266,215,508		\$ 269,216,031		\$ 3,000,523	1.13%

* Includes collections on both current support and arrears.

** Includes collections on both current support and arrears; also includes money sent to other states.

SOURCE: NJKiDS (Based on Federal Quarterly Report of Collections - OCSE-34A except Disbursed Collections)
Disbursed Collections obtained from Federal Data Report - OCSE-157, which is reported annually to Congress and
used in the calculation of incentive dollars earned by each state.

TABLE 13

OFFICE OF CHILD
SUPPORT SERVICES**OFFICE OF CHILD SUPPORT SERVICES**

State Summary

TITLE IV-D PATERNITY ESTABLISHMENT REPORT

Comparison of November (FFY 18 vs. FFY 19)

County Office	NOVEMBER 2018			NOVEMBER 2019			Increase or Decrease (-) from FFY 2018 to FFY 2019
	Total Children Born Out of Wedlock*	Number of Paternities Established	Percent of Paternities Established	Total Children Born Out of Wedlock*	Number of Paternities Established	Percent of Paternities Established	
Atlantic	7,115	7,001	98.4%	6,617	6,563	99.2%	0.8%
Bergen	3,460	3,395	98.1%	3,292	3,213	97.6%	-0.5%
Burlington	5,786	5,582	96.5%	5,234	5,058	96.6%	0.2%
Camden	17,605	16,926	96.1%	16,145	15,638	96.9%	0.7%
Cape May	1,413	1,390	98.4%	1,320	1,294	98.0%	-0.3%
Cumberland	7,163	7,088	99.0%	6,761	6,693	99.0%	0.0%
Essex	28,707	26,841	93.5%	26,442	24,827	93.9%	0.4%
Gloucester	4,972	4,905	98.7%	4,644	4,569	98.4%	-0.3%
Hudson	11,714	11,019	94.1%	10,631	10,134	95.3%	1.3%
Hunterdon	323	313	96.9%	288	287	99.7%	2.7%
Mercer	8,132	7,812	96.1%	7,552	7,257	96.1%	0.0%
Middlesex	7,240	7,014	96.9%	6,729	6,521	96.9%	0.0%
Monmouth	6,118	5,859	95.8%	5,651	5,440	96.3%	0.5%
Morris	1,442	1,428	99.0%	1,345	1,327	98.7%	-0.4%
Ocean	5,308	5,160	97.2%	5,011	4,860	97.0%	-0.2%
Passaic	12,528	11,756	93.8%	11,076	10,556	95.3%	1.5%
Salem	2,859	2,767	96.8%	2,788	2,686	96.3%	-0.4%
Somerset	1,689	1,629	96.4%	1,524	1,473	96.7%	0.2%
Sussex	630	627	99.5%	575	570	99.1%	-0.4%
Union	11,093	10,488	94.5%	10,524	10,016	95.2%	0.6%
Warren	1,045	1,028	98.4%	985	975	99.0%	0.6%
NJ TOTALS	146,342	140,028	95.7%	135,134	129,957	96.2%	0.5%

SOURCE: NJKiDS (Based on Federal Performance Measures - OCSE-157)

* Information on Out of Wedlock Births obtained from NJ Bureau of Vital Statistics

TABLE 14

OFFICE OF CHILD
SUPPORT SERVICES**OFFICE OF CHILD SUPPORT SERVICES**

State Summary

TITLE IV-D REPORT OF CASES WITH ORDERS

Comparison of November (FFY 18 vs. FFY 19)

County Office	NOVEMBER 2018			NOVEMBER 2019			Increase or Decrease (-) from FFY 2018 to FFY 2019
	TOTAL CASES	CASES WITH ORDERS	% OF CASES WITH ORDERS	TOTAL CASES	CASES WITH ORDERS	% OF CASES WITH ORDERS	
Atlantic	12,748	11,231	88.1%	12,014	10,853	90.3%	2.2%
Bergen	12,128	11,726	96.7%	11,884	11,415	96.1%	-0.6%
Burlington	14,517	12,689	87.4%	13,473	12,234	90.8%	3.4%
Camden	30,347	26,721	88.1%	28,392	26,335	92.8%	4.7%
Cape May	3,249	2,931	90.2%	3,118	2,849	91.4%	1.2%
Cumberland	12,367	11,741	94.9%	11,963	11,362	95.0%	0.0%
Essex	45,655	36,724	80.4%	43,073	35,535	82.5%	2.1%
Gloucester	10,911	10,375	95.1%	10,593	10,098	95.3%	0.2%
Hudson	22,731	18,387	80.9%	21,122	17,850	84.5%	3.6%
Hunterdon	1,479	1,421	96.1%	1,448	1,368	94.5%	-1.6%
Mercer	14,788	13,067	88.4%	14,078	12,630	89.7%	1.4%
Middlesex	18,043	16,820	93.2%	17,417	16,324	93.7%	0.5%
Monmouth	15,037	14,208	94.5%	14,284	13,611	95.3%	0.8%
Morris	6,059	5,895	97.3%	5,887	5,726	97.3%	0.0%
Ocean	15,244	14,536	95.4%	14,776	14,051	95.1%	-0.3%
Passaic	23,462	17,618	75.1%	21,276	16,919	79.5%	4.4%
Salem	4,451	4,258	95.7%	4,309	4,116	95.5%	-0.1%
Somerset	5,033	4,712	93.6%	4,708	4,406	93.6%	0.0%
Sussex	2,784	2,694	96.8%	2,642	2,577	97.5%	0.8%
Union	18,863	17,665	93.6%	18,222	17,137	94.0%	0.4%
Warren	3,077	2,838	92.2%	3,059	2,824	92.3%	0.1%
NJ TOTALS	292,973	258,257	88.2%	277,738	250,220	90.1%	1.9%

SOURCE: NJKiDS (Based on Federal Performance Measures - OCSE-157)

TABLE 15

OFFICE OF CHILD
SUPPORT SERVICES**OFFICE OF CHILD SUPPORT SERVICES**

State Summary

TITLE IV-D COLLECTIONS ON CURRENT SUPPORT

Comparison of November (FFY 18 vs. FFY 19)

	NOVEMBER 2018			NOVEMBER 2019			Increase or Decrease (-) from FFY 2018 to FFY 2019
County Office	Total Current Support Due	Total Current Support Distributed	Total Collection Rate	Total Current Support Due	Total Current Support Distributed	Total Collection Rate	
Atlantic	\$3,756,039	\$2,510,671	66.8%	\$3,599,886	\$2,472,994	68.7%	1.9%
Bergen	\$8,504,497	\$6,584,890	77.4%	\$8,272,679	\$6,373,051	77.0%	-0.4%
Burlington	\$5,891,624	\$4,125,770	70.0%	\$5,535,775	\$3,942,146	71.2%	1.2%
Camden	\$8,043,377	\$4,827,527	60.0%	\$7,577,473	\$4,709,364	62.1%	2.1%
Cape May	\$1,125,956	\$775,630	68.9%	\$1,066,113	\$727,219	68.2%	-0.7%
Cumberland	\$3,114,280	\$1,848,188	59.3%	\$2,967,020	\$1,814,035	61.1%	1.8%
Essex	\$10,860,448	\$6,514,148	60.0%	\$10,277,495	\$6,329,927	61.6%	1.6%
Gloucester	\$4,318,331	\$2,867,092	66.4%	\$4,080,934	\$2,793,154	68.4%	2.1%
Hudson	\$7,152,231	\$4,906,963	68.6%	\$6,885,196	\$4,767,533	69.2%	0.6%
Hunterdon	\$1,271,683	\$1,015,394	79.8%	\$1,204,387	\$976,847	81.1%	1.3%
Mercer	\$4,220,128	\$2,622,194	62.1%	\$3,988,712	\$2,540,129	63.7%	1.5%
Middlesex	\$7,812,752	\$5,452,167	69.8%	\$7,382,671	\$5,206,024	70.5%	0.7%
Monmouth	\$7,539,544	\$5,437,099	72.1%	\$7,087,675	\$5,306,663	74.9%	2.8%
Morris	\$4,637,086	\$3,390,435	73.1%	\$4,313,005	\$3,304,965	76.6%	3.5%
Ocean	\$6,763,215	\$4,884,170	72.2%	\$6,393,448	\$4,685,086	73.3%	1.1%
Passaic	\$6,543,658	\$4,218,452	64.5%	\$6,164,623	\$4,103,003	66.6%	2.1%
Salem	\$1,151,638	\$682,294	59.2%	\$1,114,059	\$662,606	59.5%	0.2%
Somerset	\$3,141,151	\$2,482,546	79.0%	\$2,946,372	\$2,379,322	80.8%	1.7%
Sussex	\$1,837,936	\$1,451,877	79.0%	\$1,730,014	\$1,394,270	80.6%	1.6%
Union	\$6,855,623	\$4,775,886	69.7%	\$6,540,844	\$4,601,097	70.3%	0.7%
Warren	\$1,344,523	\$996,983	74.2%	\$1,276,613	\$947,278	74.2%	0.1%
NJ TOTALS	\$105,885,720	\$72,370,378	68.3%	\$100,404,993	\$70,036,713	69.8%	1.4%

SOURCE: NJKiDS (Based on Federal Performance Measures - OCSE-157)

TABLE 16

OFFICE OF CHILD
SUPPORT SERVICES**OFFICE OF CHILD SUPPORT SERVICES**

State Summary

TITLE IV-D CASES ARREARS COLLECTION REPORT

Comparison of November (FFY 18 vs. FFY 19)

County Office	NOVEMBER 2018			NOVEMBER 2019			Increase or Decrease (-) from FFY 2018 to FFY 2019
	Total Cases with Arrears	Total Amount Collected	Average Arrears Collection per Case	Total Cases with Arrears	Total Amount Collected	Average Arrears Collection per Case	
Atlantic	7,469	\$614,781	\$82.31	7,249	\$622,112	\$85.82	\$3.51
Bergen	7,527	\$923,215	\$122.65	7,407	\$930,745	\$125.66	\$3.00
Burlington	8,376	\$704,386	\$84.10	8,143	\$712,613	\$87.51	\$3.42
Camden	17,117	\$1,178,954	\$68.88	16,612	\$1,195,635	\$71.97	\$3.10
Cape May	2,038	\$155,539	\$76.32	1,997	\$157,612	\$78.92	\$2.61
Cumberland	7,696	\$405,536	\$52.69	7,483	\$413,072	\$55.20	\$2.51
Essex	23,172	\$1,953,509	\$84.30	22,470	\$1,976,063	\$87.94	\$3.64
Gloucester	6,971	\$572,914	\$82.19	6,794	\$579,790	\$85.34	\$3.15
Hudson	12,737	\$1,094,220	\$85.91	12,415	\$1,106,721	\$89.14	\$3.24
Hunterdon	888	\$138,271	\$155.71	843	\$139,270	\$165.21	\$9.50
Mercer	8,621	\$775,124	\$89.91	8,404	\$783,618	\$93.24	\$3.33
Middlesex	11,241	\$1,057,577	\$94.08	10,882	\$1,068,553	\$98.19	\$4.11
Monmouth	9,024	\$972,113	\$107.73	8,679	\$980,900	\$113.02	\$5.29
Morris	3,988	\$514,829	\$129.09	3,838	\$518,796	\$135.17	\$6.08
Ocean	9,490	\$904,401	\$95.30	9,123	\$913,619	\$100.14	\$4.84
Passaic	11,827	\$969,598	\$81.98	11,492	\$981,172	\$85.38	\$3.40
Salem	2,632	\$154,287	\$58.62	2,547	\$156,893	\$61.60	\$2.98
Somerset	3,124	\$404,151	\$129.37	2,939	\$407,219	\$138.56	\$9.19
Sussex	1,829	\$203,603	\$111.32	1,734	\$205,448	\$118.48	\$7.16
Union	11,658	\$1,023,456	\$87.79	11,383	\$1,034,927	\$90.92	\$3.13
Warren	1,813	\$145,782	\$80.41	1,749	\$147,611	\$84.40	\$3.99
NJ TOTALS	169,238	\$14,866,246	\$87.84	164,183	\$15,032,390	\$91.56	\$3.72

SOURCE: OCSE-157 Child Support Enforcement Annual Data Report

Table 17

WORK FIRST NEW JERSEY STATISTICAL SUMMARY

WFNJ

NOVEMBER 2019

COUNTY	EMPLOYMENT DIRECTED ACTIVITIES			EMPLOYED OPEN (WFNJ RECIPIENT)	SUPPORT SERVICES		CLOSED FOR EMPLOYMENT THIS MONTH	POST ASSISTANCE CHILD CARE
	CWEP	ALL	JOB		ON ACTIVE CASE			
		OTHER	SEARCH		CHILD	TRAINING REL.		
		TRAINING			CARE	EXPENSES		
ATLANTIC	45	85	27	58	23	156	8	58
BERGEN	72	9	43	17	64	41	2	5
BURLINGTON	64	15	39	66	57	63	4	77
CAMDEN	128	142	4	135	179	86	17	79
CAPE MAY	4	15	15	9	8	12	3	3
CUMBERLAND	50	53	33	28	39	69	8	22
ESSEX	240	298	39	259	353	377	38	256
GLOUCESTER	7	20	3	35	17	15	2	30
HUDSON	93	210	35	130	343	289	28	88
HUNTERDON	0	0	7	1	3	0	0	1
MERCER	82	101	69	93	124	80	17	75
MIDDLESEX	34	14	54	58	58	38	9	69
MONMOUTH	17	15	16	32	29	26	1	45
MORRIS	7	7	7	16	12	7	4	4
OCEAN	6	91	0	14	23	26	1	36
PASSAIC	176	119	5	62	177	127	16	31
SALEM	11	7	16	15	8	14	4	4
SOMERSET	45	15	11	37	0	26	1	18
SUSSEX	5	0	0	4	41	0	0	3
UNION	129	34	3	44	72	69	10	32
WARREN	6	12	9	25	11	3	2	16
STATE	1,221	1,262	435	1,138	1,641	1,524	175	952

Data is derived from NJ Division of Family Development's FAMIS Reports RM064-01 & RM703-51, AdHoc Reports 5549 & 5598 and SDW Report WR00022WZ_CC

**DIVISION OF FAMILY DEVELOPMENT CURRENT PROGRAM STATISTICS
NOVEMBER 2019**

ACRONYMS

EMERGENCY ASSISTANCE (EA) - Payments to those eligible for WFNJ/TANF or WFNJ/GA, authorized during the 30 consecutive days immediately following the emergency (defined as a substantial loss of shelter, food, clothing, or household furnishings by fire, flood or other similar disaster) or if eligible individual or family is in an imminent or actual state of homelessness.

NJ SNAP - Formerly the Food Stamp Program, now known as **NJ SNAP** (NJ Supplemental Nutrition Assistance Program) authorized by Congress as a nutritional supplement program to provide low income households with more food of greater variety and better nutrition. Program eligibility is based on household income, resources, and expenses for medical, shelter, and dependent care. CWA staff refers certain recipients to the New Jersey Department of Labor for participation in the Food Stamp Employment and Training Program.

FAMIS: Family Assistance Management Information System

GAAS: General Assistance Automated System

NJKIDS: New Jersey Kids Deserve Support (Child Support Information Management System)

NJ MMIS SHARED DATA WAREHOUSE: The Shared Data Warehouse (SDW) is the repository for New Jersey's DFD and Medicaid data. Since 2003, OptumInsight has administered the SDW and provided access to the data through a reporting tool known as Business Objects.

OMEGA: Online Management of Economic Goal Achievement

SSI-EA: Supplemental Security Income-Emergency Assistance

WFNJ: Work First New Jersey - Fully implemented July 1, 1997, this is New Jersey's welfare reform program which responds to the requirements of the Federal Personal Responsibility and Work Opportunity Reconciliation Act (**PRWORA**) of 1996. PRWORA established Temporary Assistance for Needy Families (**TANF**) as the replacement for AFDC cash assistance. WFNJ includes two segments, **WFNJ/TANF** for families with children, and **WFNJ/GA** (General Assistance) for single adults and couples without dependent children. WFNJ emphasizes achieving self-sufficiency and limits lifetime receipt of financial assistance to a total of five years.

**DIVISION OF FAMILY DEVELOPMENT CURRENT PROGRAM STATISTICS
NOVEMBER 2019**

EXPLANATORY NOTES

The Department of Human Services Division of Family Development provides basic income and an opportunity to achieve self-sufficiency for individuals and families served by the Division's programs. The Division provides leadership, direction and supervision to those public agencies responsible for administering those programs and plans for and develops policies to promote self-sufficiency.

WFNJ Statistical Summary (Table 17)

Employment Directed Activities (EDA) - From Activities Summary Report (OMEGA report # RM064). Unduplicated count of persons participating in Community Work Experience Program (CWEP), All Other Training, or Job Search.

Number of Persons Employed This Month, Still Receiving TANF Individuals with open "empl" activity on OMEGA. Ad hoc report.

Participants Receiving Child Care Services - From Issuance Disbursement Summary (OMEGA report # RM703). Total number of active participants who show receipt of **Child Care**.

Number of Persons Closed on FAMIS Due to Employment - From FAMIS report #5549-RM-2.

Post TANF and Receiving Child Care - Persons no longer in receipt of TANF but still receiving child care. From Share Data Warehouse Child Care case count based on Child Care payments (SDW report WR00022WZ_CC).