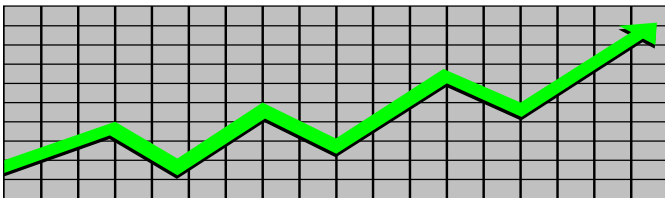


**State of New Jersey**  
**Department of Human Services**  
**Division of Family Development**

---

# **CURRENT PROGRAM STATISTICS**



---

**November 2020**  
**Natasha Johnson, Assistant Commissioner**

**DIVISION OF FAMILY DEVELOPMENT CURRENT PROGRAM STATISTICS  
NOVEMBER 2020**

**TABLE OF CONTENTS**

**HIGHLIGHTS:**

<b>WFNJ/TANF.....</b>	<b>ii</b>
<b>NJ SNAP.....</b>	<b>ii</b>
<b>EMERGENCY ASSISTANCE.....</b>	<b>ii</b>
<b>GENERAL ASSISTANCE.....</b>	<b>iii</b>
GA Emergency Assistance.....	iii
GA Program.....	iii
<b>CHILD SUPPORT SERVICES.....</b>	<b>iii</b>
<b>WORK FIRST NEW JERSEY (WFNJ).....</b>	<b>iii</b>
<b>STATISTICS- BY STATE &amp; COUNTY.....</b>	<b>1</b>
Table 1: WFNJ/TANF Families & Persons (NJ Statewide) November 2018 to 2020.....	1
Table 2: WFNJ/TANF Families (by County)- November 2020.....	2
Table 2B: WFNJ/TANF Persons, Adults, & Children (by County)- November 2020.....	3
Table 3: TANF Work Participation Rates Over 12 Month Period (by County)-November 2020....	4
Table 4: TANF Work Participation Rates Over 12 Month Period (NJ Statewide) November 2020	5
Table 5: NJ SNAP Households/Persons (NJ Statewide) November 2018 to 2020.....	6
Table 6: NJ SNAP Recipient Trends (NJ Statewide) November 2018 to 2020.....	7
Table 7: NJ SNAP Households/Persons (by County)- November 2020.....	8
Table 8: Emergency Assistance Program (NJ Statewide) November 2018 to 2020.....	9
Table 9: Emergency Assistance Program (by County)- November 2020.....	10
Table 10: General Assistance Program (NJ Statewide) November 2018 to 2020.....	11
Table 11: General Assistance Program (by County)- November 2020 .....	12
Table 12: Child Support Services Distributions (NJ Statewide) FFY 2020.....	13
Table 13: Child Support Services Paternities Established- November 2020.....	14
Table 14: Child Support Services Cases With Orders- November 2020.....	15
Table 15: Child Support Services Collections On Current Support- November 2020.....	16
Table 16: Child Support Services Cases With Payments On Arrears-November 2020.....	17
Table 17: WFNJ Statistical Summary- November 2020.....	18
<b>ACRONYMS.....</b>	<b>19</b>
<b>EXPLANATORY NOTES.....</b>	<b>20</b>
WFNJ Statistical Summary (Table 17).....	20

**DIVISION OF FAMILY DEVELOPMENT CURRENT PROGRAM STATISTICS  
NOVEMBER 2020**

---

Each month the Division of Family Development publishes its program statistics for: WFNJ/TANF, NJ SNAP, Emergency Assistance, General Assistance, and Child Support Services. When possible, information is provided separately for children and adults. Many tables also provide trend data with information broken down by county for readers to consider. This report is compiled and prepared by The Bureau of Research & Reporting.

---

**WFNJ/TANF**

- As of the end of November, the TANF caseload had decreased by 118 cases, from 10,953 in November 2019 to 10,835 in November 2020, a decrease of -1.1%.
- The counties with caseloads that increased the most since November 2019 were Middlesex (8.9%), Hudson (22.0%) and Hunterdon (30.3%).
- The counties with caseloads that decreased the most since November 2019 were Sussex (-20.0%), Gloucester (-21.5%) and Morris (-26.9%).
- Of the WFNJ/TANF cases, 3,470 or 32.0% were child-only in November 2020.
- The counties with the most child-only cases were Camden (560), Essex (428) and Hudson (426).
- Essex (4,580), Hudson (4,127), Camden (3,558), Passaic (2,974) and Mercer (1,720) counties had the greatest number of persons receiving TANF in November 2020.

**NJ SNAP (formerly FOOD STAMPS)**

- In November 2020, there were 406,211 households receiving NJ SNAP benefits. The number of NJ SNAP households increased by 63,971 or 18.7%, since November 2019.
- There were 790,767 persons receiving NJ SNAP benefits as of November 2020, an increase of 115,364 or 17.1% since November 2019.
- The counties having the highest caseload increase since November 2019 are Essex (23.9%), Warren (27.1%) and Hudson (35.7%).

**EMERGENCY ASSISTANCE**

- There were 1,343 TANF families receiving Emergency Assistance (EA) in November 2020, a decrease of 212 or -13.6% since November 2019.
- In November 2020, EA payments were made for 492 SSI recipients.

**DIVISION OF FAMILY DEVELOPMENT CURRENT PROGRAM STATISTICS  
NOVEMBER 2020**

- There were 1,719 GA cases with Emergency Assistance payments in November 2020, a decrease of 357 or -17.2% since November 2019.
- The counties that showed the highest percent increase in Emergency Assistance payments were Camden (13.1%), Monmouth (15.6%) and Ocean (25.9%).
- The counties that showed the highest percent decrease in Emergency Assistance payments were Burlington (-63.5%), Essex (-67.9%) and Salem (-100.0%).

**GENERAL ASSISTANCE**

- The total numbers of cases receiving GA has increased from 9,888 to 13,050 since November 2019, an increase of 32.0%.
- There were 8,228 Employable GA and 4,822 Unemployable GA cases in November 2020.
- The counties that showed a percent increase for GA cases were Camden (57.1%), Hudson (95.6%) and Salem (103.3%) since November 2019.
- The counties that showed the highest percent decrease for GA cases since November 2019 were Morris (-2.2%) and Hunterdon (-12.7%).
- In November 2020, GA cases showed a -0.7% decrease since October 2020.

**CHILD SUPPORT SERVICES (Quarterly Report)**

- The total collection for the Child Support Services Program was about \$302 million from July 2020 to September 2020, a decrease of -0.7 percent over the same period for FFY 2019.
- Total distributions decreased -1.2% from September 2019.

**WORK FIRST NEW JERSEY (WFNJ)**

- During the report month of November 2020, there were 279 families in which at least one member was employed and an additional 63 families whose WFNJ assistance cases were closed due to employment - related earnings.
- The three counties with the greatest number of employed active WFNJ recipients were: Essex (54), Hudson (37) and Camden (26).
- There were 726 former TANF cases receiving post-TANF support in the form of child care assistance.

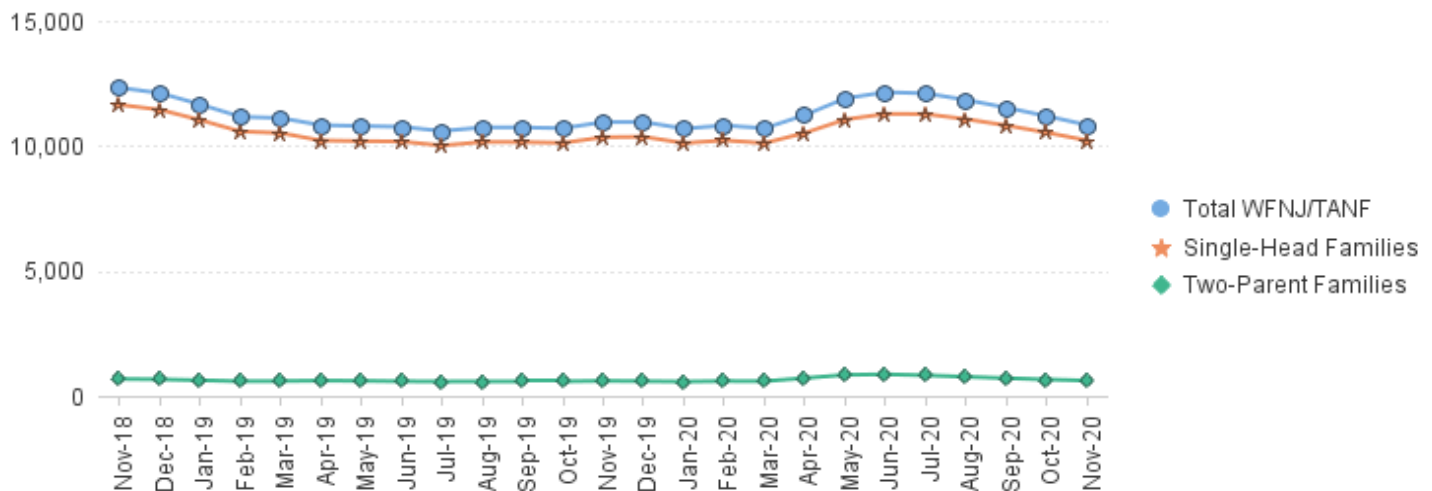
TABLE 1: WFNJ/TANF PROGRAM

## STATEWIDE NUMBER OF APPLICATIONS AND TERMINATIONS DURING NOVEMBER 2020

## NUMBER OF ELIGIBLE FAMILIES &amp; PERSONS RECEIVING WFNJ/TANF FOR NOVEMBER 2020

NOVEMBER 2018 THROUGH NOVEMBER 2020													
		Cases Added	Cases Closed	Child-Only Cases ‡	Total Single-Head Families	2-Parent Families	Total WFNJ/TANF Families	%CHNG (1 Yr.)	Total Persons	%CHNG (1 Yr.)	Adults	Children	
2018	NOV	1,191	1,381	4,180	11,645	681	12,326	-21.4%	30,734	-22.3%	8,827	21,907	
	DEC	929	1,194	4,128	11,449	664	12,113	-22.0%	30,318	-22.7%	8,649	21,669	
2018	Average	1,188	1,515	4,441	12,531	781	13,312		33,375		9,652	23,724	
2019	JAN	967	1,444	4,093	11,034	628	11,662	-22.8%	29,021	-24.1%	8,197	20,824	
	FEB	791	1,408	3,913	10,577	589	11,166	-23.0%	27,815	-24.1%	7,842	19,973	
	MAR	989	1,340	3,986	10,516	597	11,113	-22.3%	27,603	-23.2%	7,724	19,879	
	APR	998	1,271	3,906	10,216	614	10,830	-21.5%	26,968	-22.0%	7,538	19,430	
	MAY	1,084	1,174	3,830	10,191	606	10,797	-20.1%	26,865	-20.5%	7,573	19,292	
	JUN	1,024	1,135	3,790	10,175	588	10,763	-19.3%	26,674	-19.7%	7,561	19,113	
	JUL	1,040	1,231	3,710	10,014	580	10,594	-18.0%	26,323	-17.8%	7,464	18,859	
	AUG	1,209	1,135	3,723	10,158	582	10,740	-16.1%	26,735	-18.6%	7,599	19,136	
	SEP	1,055	1,048	3,679	10,153	586	10,739	-14.8%	26,803	-14.0%	7,646	19,157	
	OCT	1,137	1,253	3,556	10,120	586	10,706	-14.1%	26,933	-13.3%	7,736	19,197	
	NOV	1,181	1,159	3,664	10,348	605	10,953	-11.1%	27,644	-10.1%	7,894	19,750	
	DEC	1,053	1,042	3,689	10,364	593	10,957	-9.5%	27,766	-8.4%	7,861	19,905	
2019	Average	1,044	1,220	3,795	10,322	596	10,918		27,263		7,720	19,543	
2020	JAN	921	1,183	3,646	10,113	576	10,689	-8.3%	27,129	-6.5%	7,619	19,510	
	FEB	1,066	1,007	3,669	10,222	596	10,818	-3.1%	27,517	-1.1%	7,745	19,772	
	MAR	915	1,024	3,612	10,113	592	10,705	-3.7%	27,196	-1.5%	7,685	19,511	
	APR	1,179	712	3,621	10,519	716	11,235	3.7%	28,765	6.7%	8,330	20,435	
	MAY	832	232	3,696	11,057	845	11,902	10.2%	30,734	14.4%	9,051	21,683	
	JUN	539	278	3,722	11,281	866	12,147	12.9%	31,370	17.6%	9,291	22,079	
	JUL	458	526	3,686	11,274	826	12,100	14.2%	31,216	18.6%	9,240	21,976	
	AUG	410	660	3,665	11,070	768	11,838	10.2%	30,454	13.9%	8,941	21,513	
	SEP	475	796	3,603	10,817	711	11,528	7.3%	29,531	10.2%	8,636	20,895	
	OCT	534	904	3,564	10,532	659	11,191	4.5%	28,657	6.4%	8,286	20,371	
	NOV	419	767	3,470	10,218	617	10,835	-1.1%	27,738	0.3%	7,982	19,756	
2020	AVG to date	704	735	3,632	10,656	707	11,363		29,119		8,437	20,682	

**NJ STATEWIDE**  
**Eligible Families Receiving WFNJ/TANF**  
**NOVEMBER 2018 THROUGH NOVEMBER 2020**



Data is derived from NJ MMIS Shared Data Warehouse Issuance files.

Effective July 2013 this data query source was converted to the SDW

‡ Child-only cases are defined as families in which no eligible adult receives TANF program benefits, yet the family continues to be headed by at least one of the biological parents, or grandparents, or other appropriate adult.

TABLE 2:

WFNJ/TANF

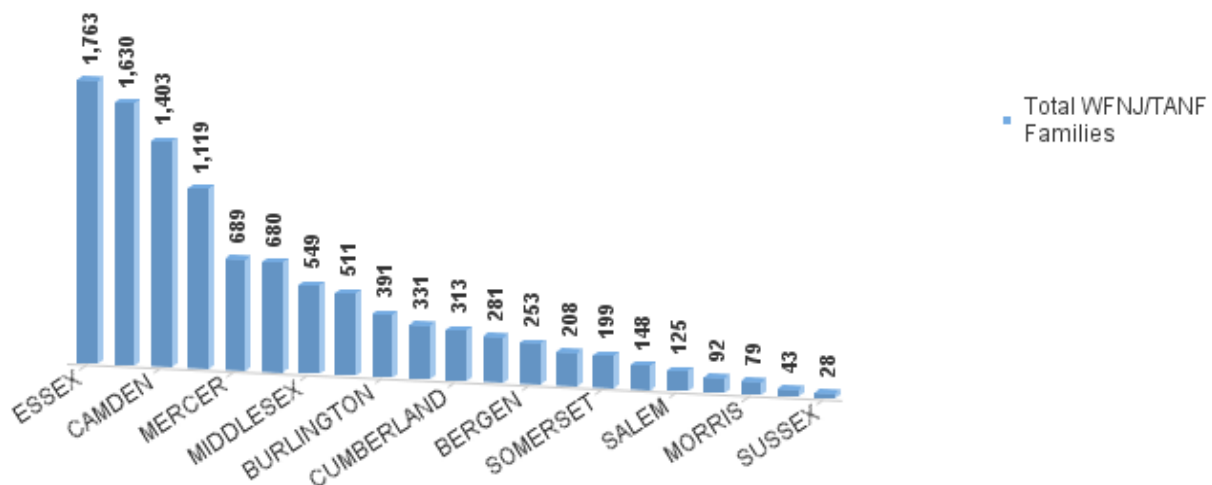
NUMBER OF APPLICATIONS AND TERMINATIONS BY COUNTY DURING NOVEMBER 2020

PROGARM

NUMBER OF ELIGIBLE FAMILIES RECEIVING WFNJ/TANF FOR NOVEMBER 2020

County	Cases Added	Cases Closed **	Child-Only	1-Adult	Total Single-Head	Total 2-Parent	Total WFNJ/TANF	%CHNG (3 Mon)	%CHNG (1 Yr.)
			Cases ‡	Cases	Families	Families	Families		
ATLANTIC	22	45	273	371	644	36	680	-4.9%	-4.8%
BERGEN	6	15	57	178	235	18	253	-4.9%	-9.0%
BURLINGTON	19	33	139	234	373	18	391	-8.4%	-9.9%
CAMDEN	43	66	560	772	1,332	71	1,403	-3.2%	-2.3%
CAPE MAY	5	11	39	51	90	2	92	-14.0%	-17.1%
CUMBERLAND	13	33	134	163	297	16	313	-6.0%	-16.8%
ESSEX	65	68	428	1,249	1,677	86	1,763	0.9%	-4.2%
GLOUCESTER	16	27	115	157	272	9	281	-9.6%	-21.5% *
HUDSON	77	212	426	1,071	1,497	133	1,630	-16.6%	22.0% Δ
HUNTERDON	3	2	9	30	39	4	43	0.0%	30.3% Δ
MERCER	12	37	234	430	664	25	689	-3.5%	0.0%
MIDDLESEX	37	30	211	311	522	27	549	-3.0%	8.9% Δ
MONMOUTH	5	14	85	117	202	6	208	-7.1%	-11.5%
MORRIS	3	5	24	43	67	12	79	-3.7%	-26.9% *
OCEAN	12	23	84	234	318	13	331	-4.6%	-1.8%
PASSAIC	31	45	354	715	1,069	50	1,119	-1.9%	-0.5%
SALEM	13	19	42	74	116	9	125	-4.6%	-7.4%
SOMERSET	4	21	62	128	190	9	199	-10.8%	8.7%
SUSSEX	5	4	8	15	23	5	28	-6.7%	-20.0% *
UNION	20	49	150	307	457	54	511	-9.6%	-6.8%
WARREN	8	8	36	98	134	14	148	-2.0%	8.0%
<b>NJ Total</b>	<b>419</b>	<b>767</b>	<b>3,470</b>	<b>6,748</b>	<b>10,218</b>	<b>617</b>	<b>10,835</b>	<b>-6.0%</b>	<b>-1.1%</b>

Total WFNJ/TANF Families  
NOVEMBER 2020  
By County



Data is derived from NJ MMIS Shared Data Warehouse Issuance files.  
Effective July 2013 this data query source was converted to the SDW

‡ Child-only cases are defined as families in which no eligible adult receives TANF program benefits, yet the family continues to be headed by at least one of the biological parents, or grandparents, or other appropriate adult

\*\* 'Cases closed' include cases that received a benefit in the prior month, but did not receive any TANF benefit for the report month.

Δ=higher caseload % change

\*=lower caseload % change

**TABLE 2B :**  
**WFNJ/TANF**  
**PROGARM**

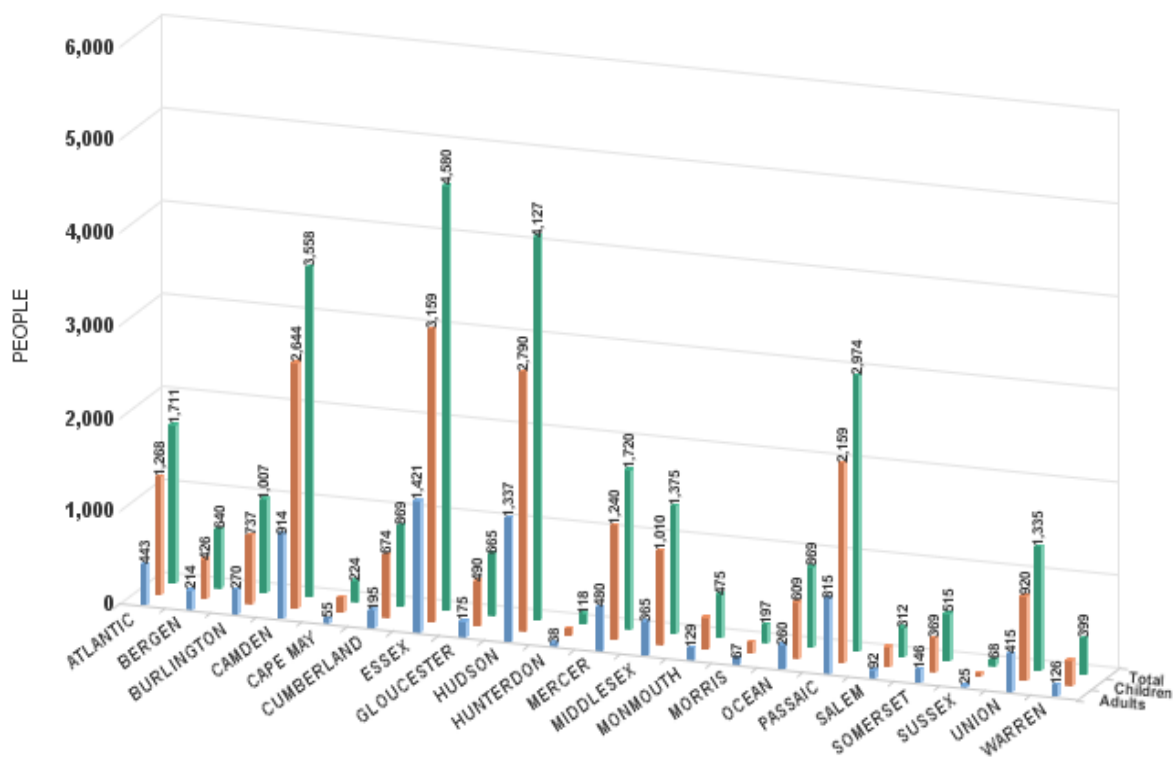
**NUMBER OF PARTICIPATING PERSONS, ADULTS, AND CHILDREN**  
**BY COUNTY FOR NOVEMBER 2020**

**PERSONS**

County	Adults	Children	Child/Adult Ratio	Total Persons	% Chng (1 Yr)	Persons Per Case
ATLANTIC	443	1,268	2.86	1,711	-3.8%	2.52
BERGEN	214	426	1.99	640	-5.5%	2.53
BURLINGTON	270	737	2.73	1,007	-7.4%	2.58
CAMDEN	914	2,644	2.89	3,558	-0.3%	2.54
CAPE MAY	55	169	3.07	224	-17.6%	2.43
CUMBERLAND	195	674	3.46	869	-15.2%	2.78
ESSEX	1,421	3,159	2.22	4,580	-4.2%	2.60
GLOUCESTER	175	490	2.80	665	-21.6% *	2.37
HUDSON	1,337	2,790	2.09	4,127	23.8% Δ	2.53
HUNTERDON	38	80	2.11	118	34.1% Δ	2.74
MERCER	480	1,240	2.58	1,720	3.1%	2.50
MIDDLESEX	365	1,010	2.77	1,375	8.4%	2.50
MONMOUTH	129	346	2.68	475	-13.6%	2.28
MORRIS	67	130	1.94	197	-29.1% *	2.49
OCEAN	260	609	2.34	869	3.2%	2.63
PASSAIC	815	2,159	2.65	2,974	1.0%	2.66
SALEM	92	220	2.39	312	-7.4%	2.50
SOMERSET	146	369	2.53	515	10.8% Δ	2.59
SUSSEX	25	43	1.72	68	-21.8% *	2.43
UNION	415	920	2.22	1,335	-3.5%	2.61
WARREN	126	273	2.17	399	9.9%	2.70
<b>NJ Total</b>	<b>7,982</b>	<b>19,756</b>	<b>2.48</b>	<b>27,738</b>	<b>0.3%</b>	<b>2.56</b>

Δ=higher caseload % change

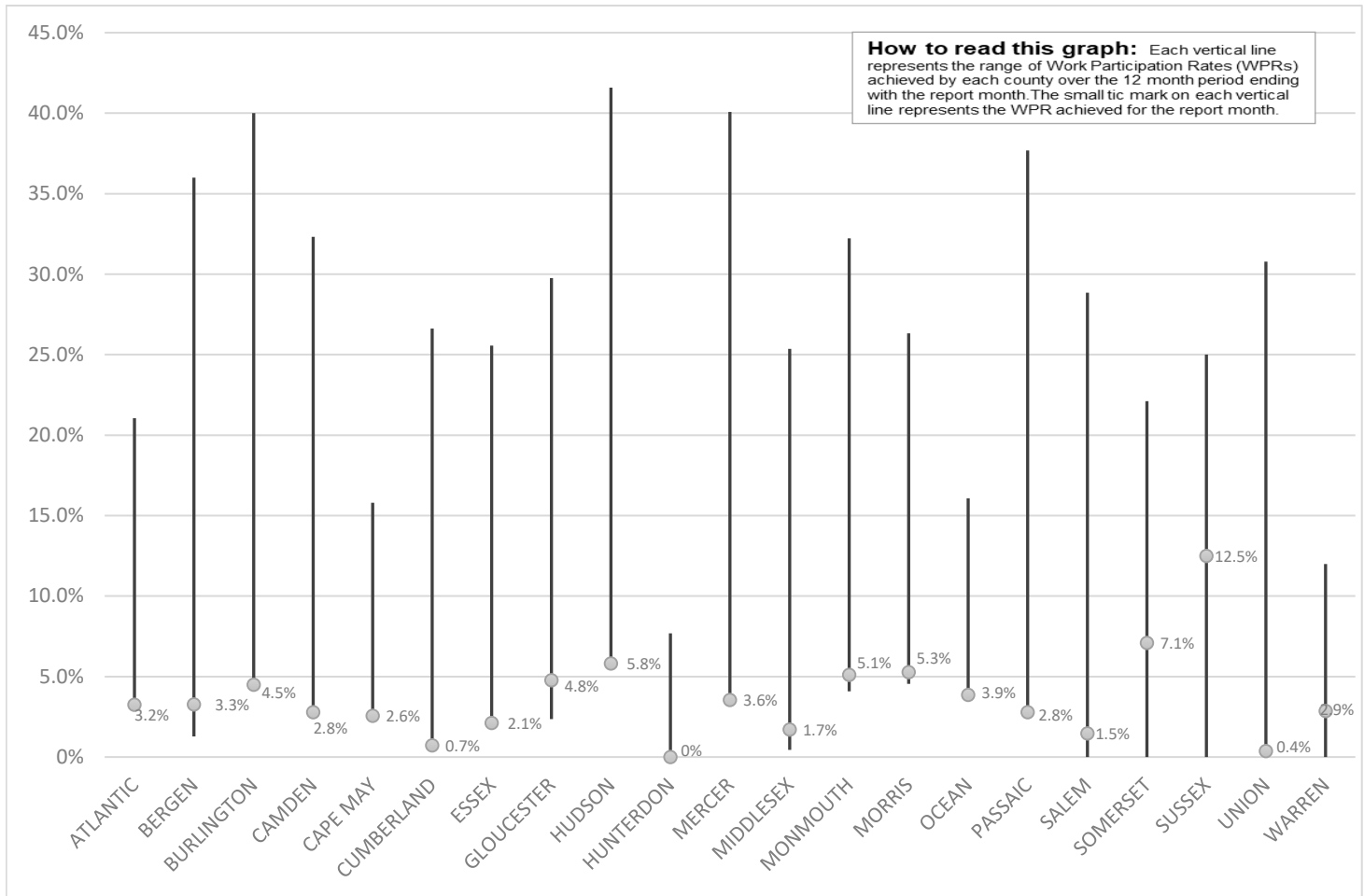
\*=lower caseload % change



Data is derived from NJ MMIS Shared Data Warehouse Issuance files.  
Effective July 2013 this data query source was converted to the SDW

TABLE 3 :

**Work Participation Rates Achieved Over 12 Month Period  
Ending with NOVEMBER 2020**

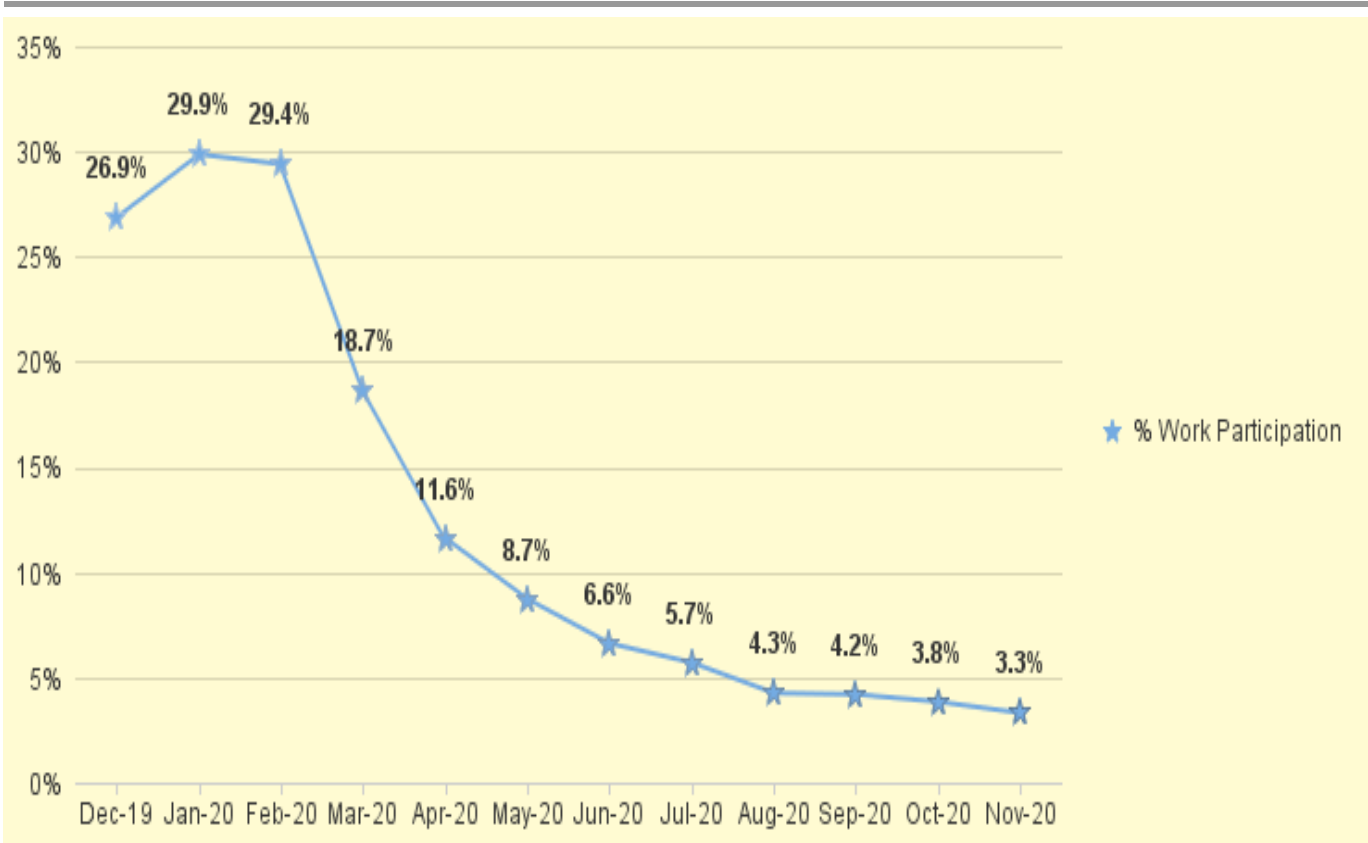


Data is derived from NJ MMIS Shared Data Warehouse Issuance files.  
Effective July 2013 this data query source was converted to the SDW



TABLE 4 :

**WFNJ/TANF Work Participation Rates  
for 12-Month Period Ending with NOVEMBER 2020 Statewide**



\* The Work Participation rate measures the number of countable Temporary Assistance for Needs Families (TANF) participants based on federal formula. The reported rate is considered to be preliminary until officially calculated by the federal government soon after the close of each federal fiscal year.

TABLE 5 :

NJ SNAP

NUMBER OF PARTICIPATING HOUSEHOLDS, PERSONS, ADULTS

(FOOD STAMPS)

AND CHILDREN FOR NOVEMBER 2020 (STATEWIDE)

## NOVEMBER 2018 THROUGH NOVEMBER 2020

		HOUSEHOLDS				PERSONS				Age 60+	People with a disability
		WFNJ/ TANF	Other low income	Total	% CHNG (1 YR)	Adults	Children	TOTAL	% CHNG (1 YR)		
2018	NOV	11,524	349,288	360,812	-6.3%	380,136	336,835	716,971	-6.6%	126,941	208,324
	DEC	11,056	347,269	358,325	-7.3%	377,967	334,264	712,231	-7.7%	126,299	210,239
2018	Average	12,474	357,482	369,956		388,161	348,773	736,934		128,054	212,862
2019	JAN	11,080	347,492	358,572	-5.8%	378,698	333,780	712,478	-6.1%	125,563	208,860
	FEB	9,524	325,936	335,460	-11.3%	354,132	303,701	657,833	-12.7%	121,511	199,781
	MAR	10,469	341,314	351,783	-7.3%	372,223	325,898	698,121	-7.7%	123,658	205,933
	APR	10,136	336,819	346,955	-7.0%	367,367	319,361	686,728	-7.6%	122,716	204,624
	MAY	10,284	337,321	347,605	-6.4%	368,192	319,432	687,624	-7.2%	122,594	203,974
	JUN	10,149	336,301	346,450	-7.2%	367,279	317,566	684,845	-8.1%	122,060	203,512
	JUL	9,962	333,891	343,853	-6.4%	365,264	314,222	679,486	-7.2%	121,238	202,824
	AUG	10,570	336,384	346,954	-5.5%	368,890	317,373	686,263	-6.2%	121,200	203,620
	SEP	10,319	331,162	341,481	-7.0%	363,290	310,676	673,966	-7.8%	120,200	202,119
	OCT	10,242	328,140	338,382	-6.8%	360,298	305,917	666,215	-7.7%	119,254	200,853
	NOV	10,580	331,660	342,240	-5.1%	364,880	310,523	675,403	-5.8%	119,560	202,867
	DEC	10,445	330,157	340,602	-4.9%	362,992	308,279	671,271	-5.8%	119,046	205,081
2019	Average	10,313	334,715	345,028		366,125	315,561	681,686		121,550	203,671
2020	JAN	10,201	325,866	336,067	-6.3%	358,028	301,901	659,929	-7.4%	117,898	201,955
	FEB	10,245	326,468	336,713	0.4%	358,670	302,524	661,194	0.5%	117,775	201,863
	MAR	10,328	324,689	335,017	-4.8%	357,989	299,375	657,364	-5.8%	117,369	201,521
	APR	11,112	337,037	348,149	0.3%	373,744	309,095	682,839	-0.6%	118,173	204,375
	MAY	11,513	353,998	365,511	5.2%	394,281	323,636	717,917	4.4%	119,744	208,152
	JUN	11,522	358,302	369,824	6.7%	398,959	326,357	725,316	5.9%	120,137	209,224
	JUL	11,336	364,797	376,133	9.4%	405,652	329,166	734,818	8.1%	120,881	211,115
	AUG	11,044	373,293	384,337	10.8%	414,644	333,705	748,349	9.0%	118,173	204,375
	SEP	10,928	384,063	394,991	15.7%	426,710	342,621	769,331	14.1%	122,341	214,255
	OCT	10,605	393,716	404,321	19.5%	437,538	350,440	787,978	18.3%	123,068	216,012
	NOV	10,335	395,876	406,211	18.7%	440,136	350,631	790,767	17.1%	123,104	216,208
2020	AVG to date	10,834	358,010	368,843		396,941	324,496	721,437		119,878	208,096

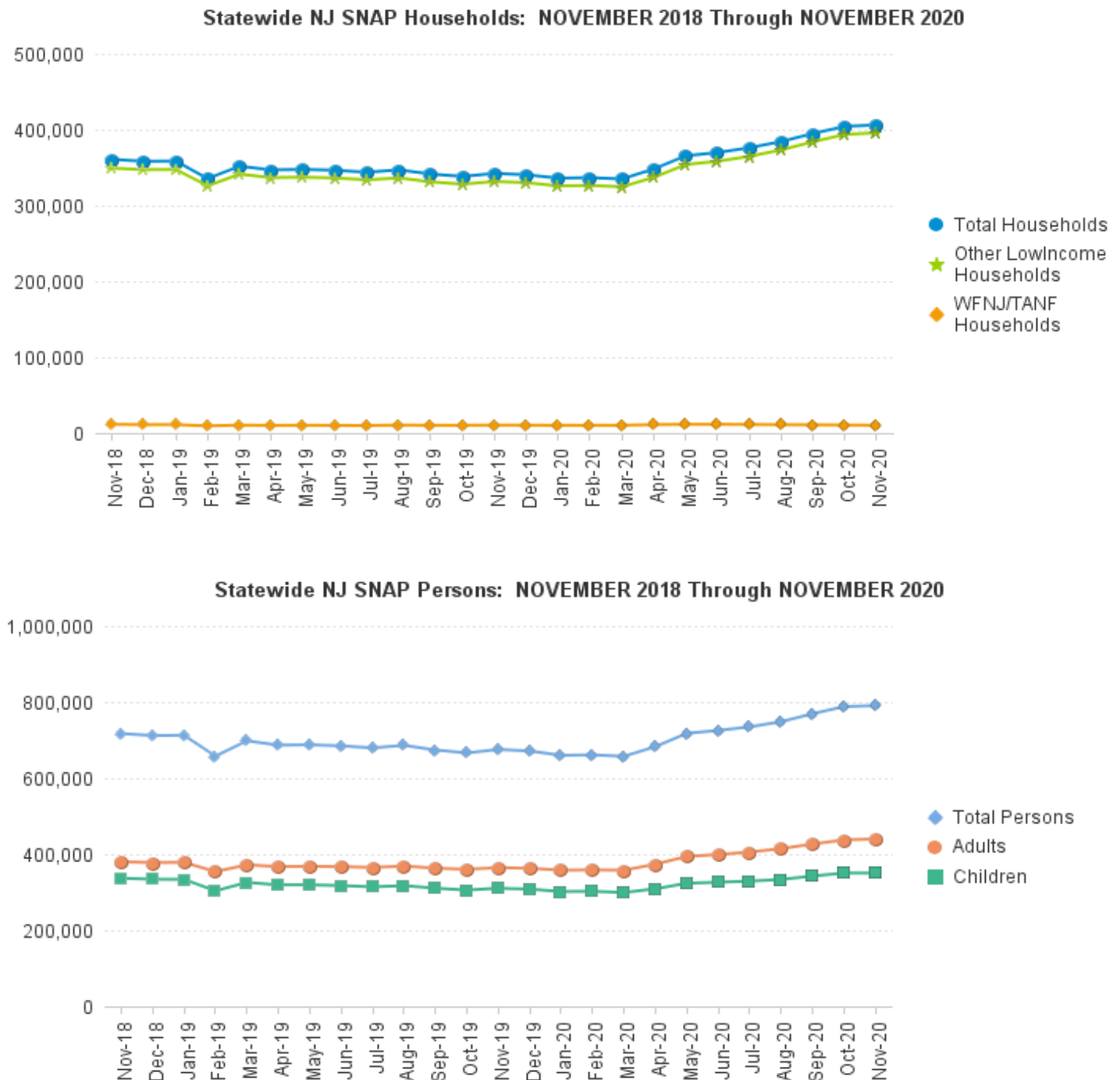
This Table is based on those Households &amp; Persons that received SNAP issuances (benefits) during the month

Data is derived from NJ MMIS Shared Data Warehouse.

Effective July 2013 this data query source was converted to the SDW.

\* Age 60+ and People with a disability columns are independent subsets of total persons. An individual might appear in both columns

**TABLE 6: NJ SNAP (FOOD STAMPS)**  
**TRENDS FOR PARTICIPATING HOUSEHOLDS & PERSONS**  
**NOVEMBER 2018 THROUGH NOVEMBER 2020 (STATEWIDE)**



Data is derived from NJ MMIS Shared Data Warehouse Issuance files.

Effective July 2013 this data query source was converted to the SDW

TABLE 7 :

NJ SNAP

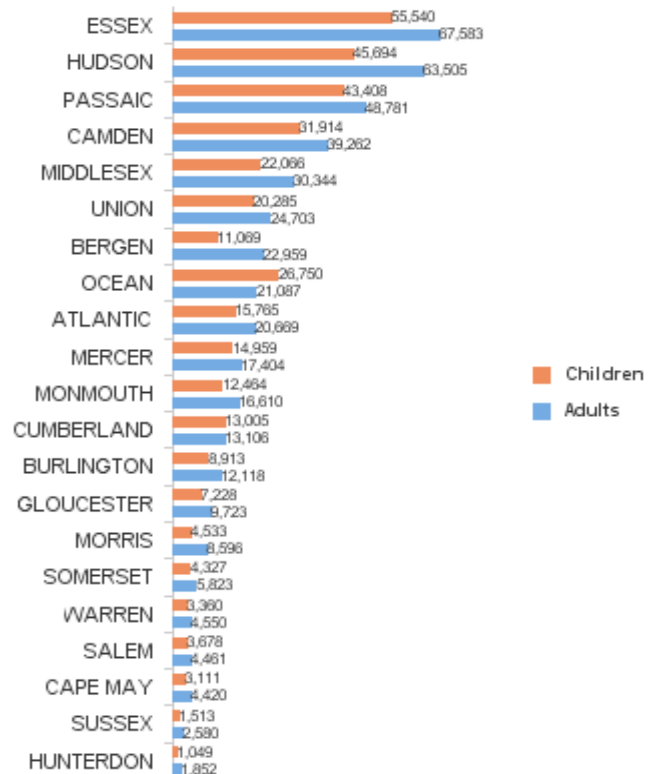
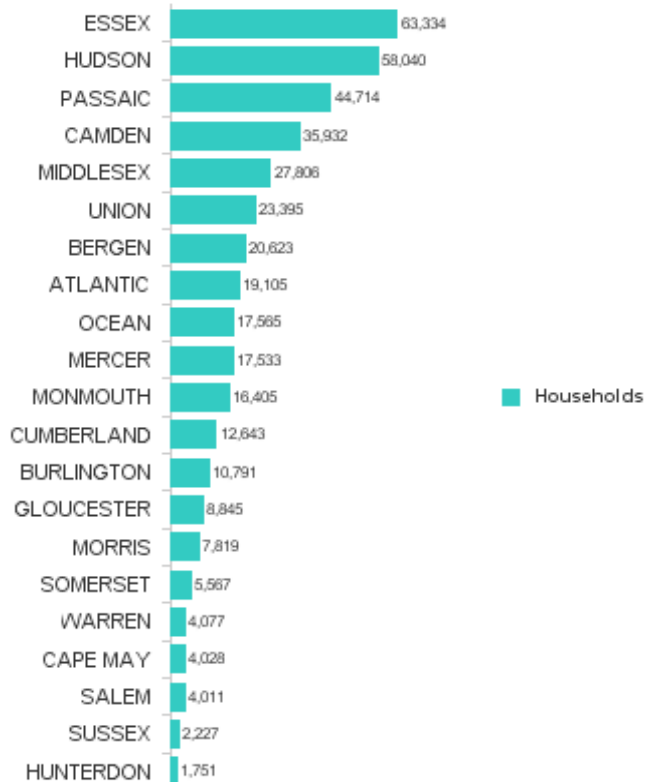
**NUMBER OF PARTICIPATING HOUSEHOLDS, PERSONS, ADULTS  
AND CHILDREN BY COUNTY FOR NOVEMBER 2020**

County	HOUSEHOLDS				PERSONS				Age 60+	People with a disability
	WFNJ/ TANF	Other low income	TOTAL	% Chng (1 Yr)	Adults	Children	TOTAL	% Chng (1 Yr)		
ATLANTIC	620	18,485	19,105	20.4%	20,669	15,765	36,434	16.3%	4,831	9,982
BERGEN	272	20,351	20,623	12.6%	22,959	11,069	34,028	14.9%	11,712	14,991
BURLINGTON	329	10,462	10,791	10.3% *	12,118	8,913	21,031	10.0% *	2,773	6,582
CAMDEN	1,303	34,629	35,932	21.1%	39,262	31,914	71,176	19.0%	7,798	18,728
CAPE MAY	79	3,949	4,028	15.6%	4,420	3,111	7,531	15.1%	995	2,276
CUMBERLAND	280	12,363	12,643	14.0%	13,106	13,005	26,111	11.9%	2,763	6,995
ESSEX	1,836	61,498	63,334	23.9% Δ	67,583	55,540	123,123	20.4%	14,975	28,749
GLOUCESTER	237	8,608	8,845	7.2% *	9,723	7,228	16,951	3.6% *	2,177	5,787
HUDSON	1,510	56,530	58,040	35.7% Δ	63,505	45,694	109,199	32.8% Δ	18,347	27,457
HUNTERDON	42	1,709	1,751	12.5%	1,852	1,049	2,901	16.6%	542	1,017
MERCER	668	16,865	17,533	20.0%	17,404	14,959	32,363	18.7%	4,170	10,070
MIDDLESEX	536	27,270	27,806	14.7%	30,344	22,066	52,410	15.1%	12,134	16,748
MONMOUTH	192	16,213	16,405	14.0%	16,610	12,464	29,074	12.6%	5,428	9,599
MORRIS	88	7,731	7,819	10.9%	8,596	4,533	13,129	14.3%	4,001	5,171
OCEAN	315	17,250	17,565	11.1%	21,087	26,750	47,837	10.4%	5,066	9,992
PASSAIC	1,113	43,601	44,714	6.8% *	48,781	43,408	92,189	6.6% *	13,522	20,605
SALEM	110	3,901	4,011	11.7%	4,461	3,678	8,139	12.1%	840	2,310
SOMERSET	182	5,385	5,567	20.9%	5,823	4,327	10,150	23.0% Δ	2,075	3,354
SUSSEX	34	2,193	2,227	12.4%	2,580	1,513	4,093	12.0%	719	1,570
UNION	459	22,936	23,395	23.4%	24,703	20,285	44,988	21.2%	7,247	11,843
WARREN	130	3,947	4,077	27.1% Δ	4,550	3,360	7,910	30.0% Δ	989	2,382
<b>NJ TOTAL</b>	<b>10,335</b>	<b>395,876</b>	<b>406,211</b>	<b>18.7%</b>	<b>440,136</b>	<b>350,631</b>	<b>790,767</b>	<b>17.1%</b>	<b>123,104</b>	<b>216,208</b>

Δ=higher caseload % change

\*=lower caseload % change

**Total NJ SNAP Recipients  
NOVEMBER 2020 by County**



Data is derived from NJ MMIS Shared Data Warehouse.

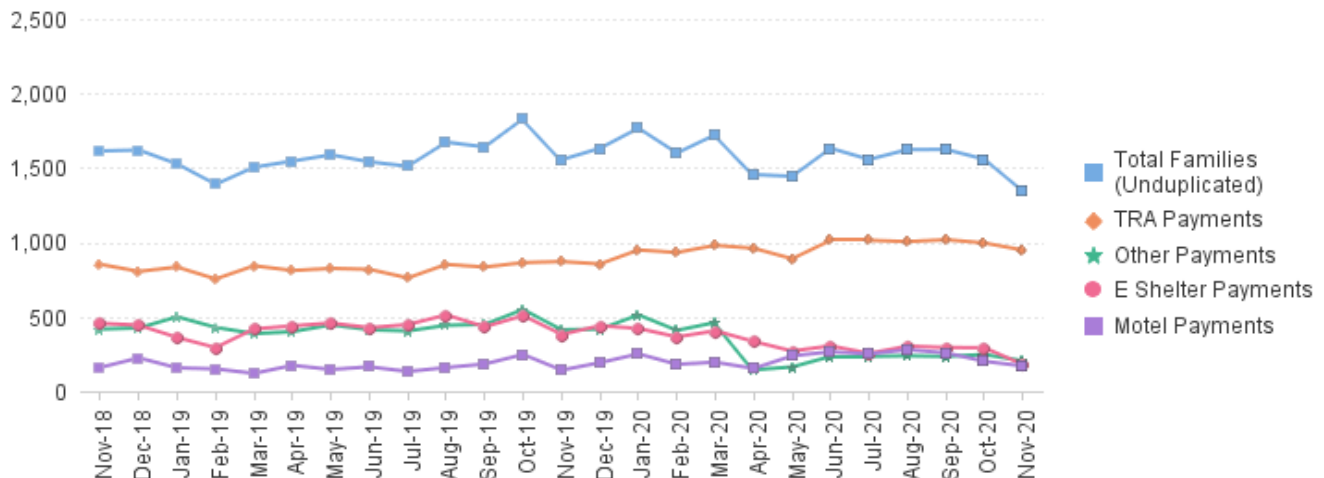
Effective July 2013 this data query source was converted to the SDW.

\* Age 60+ and People with a disability columns are independent subsets of total persons. An individual might appear in both columns

**TABLE 8 :  
EMERGENCY ASSISTANCE TOTAL NUMBER OF ELIGIBLE FAMILIES RECEIVING EMERGENCY ASSISTANCE PAYMENTS  
NOVEMBER 2018 THROUGH NOVEMBER 2020 - STATEWIDE  
(STATEWIDE)**

		Total WFNJ/EA Families (Undupl)	% CHNG (1 YR)	Temp Rent Asst. Payments (Undupl)	% CHNG (1 YR)	Motel Housing Payments (Undupl)	% CHNG (1 YR)	Shelter/Transitional Housing Payments (Undupl)	% CHNG (1 YR)	Other WFNJ/EA Payments (Undupl)	% CHNG (1 YR)
2018	NOV	1,614	-9.8%	852	-16.0%	160	16.8%	456	-1.9%	417	-4.8%
	DEC	1,620	-6.9%	805	-13.9%	224	73.6%	444	-8.3%	425	1.7%
2018 Average		1,687		888		166		466		436	
2019	JAN	1,527	-15.1%	834	-13.1%	157	-8.2%	361	-32.3%	500	15.7%
	FEB	1,390	-20.8%	754	-21.0%	150	-2.6%	293	-41.5%	429	2.9%
	MAR	1,505	-15.7%	843	-12.9%	120	-24.1%	419	-17.8%	387	-15.3%
	APR	1,546	-13.9%	811	-16.6%	174	14.5%	439	-11.5%	400	-9.7%
	MAY	1,588	-9.4%	825	-10.2%	146	0.0%	458	-7.1%	446	1.1%
	JUN	1,541	-8.1%	819	-7.7%	164	36.7%	427	-9.7%	413	-0.5%
	JUL	1,511	-9.3%	761	-11.6%	133	-28.1%	448	-0.7%	405	-9.4%
	AUG	1,673	3.1%	852	-0.6%	159	14.4%	513	16.3%	443	0.0%
	SEP	1,641	6.8%	834	4.4%	183	-2.7%	433	20.3%	449	7.2%
	OCT	1,830	12.8%	864	6.1%	247	30.0%	508	17.6%	549	16.8%
	NOV	1,555	-3.7%	871	2.2%	142	-11.3%	382	-16.2%	413	-1.0%
	DEC	1,632	0.7%	855	6.2%	192	-14.3%	440	-0.9%	417	-1.9%
2019 Average		1,578		827		164		427		438	
2020	JAN	1,767	15.7%	949	13.8%	251	59.9%	422	16.9%	513	2.6%
	FEB	1,600	15.1%	932	23.6%	181	20.7%	365	24.6%	409	-4.7%
	MAR	1,723	14.5%	980	16.3%	195	62.5%	406	-3.1%	462	19.4%
	APR	1,455	-5.9%	960	18.4%	153	-12.1%	334	-23.9%	144	-64.0%
	MAY	1,444	-9.1%	890	7.9%	238	63.0%	270	-41.0%	163	-63.5%
	JUN	1,632	5.9%	1,014	23.8%	265	61.6%	305	-28.6%	234	-43.3%
	JUL	1,557	3.0%	1,014	33.2%	251	88.7%	254	-43.3%	234	-42.2%
	AUG	1,623	-3.0%	1,005	18.0%	279	75.5%	303	-40.9%	238	-46.3%
	SEP	1,624	-1.0%	1,018	22.1%	258	41.0%	294	-32.1%	234	-47.9%
	OCT	1,558	-14.9%	996	15.3%	201	-18.6%	292	-42.5%	247	-55.0%
	NOV	1,343	-13.6%	948	8.8%	170	19.7%	180	-52.9%	204	-50.6%
2020 AVG to date		1,575		973		222		311		280	

**NJ STATEWIDE  
Families Receiving Emergency Assistance  
NOVEMBER 2018 THROUGH NOVEMBER 2020**



WFNJ/EA data is derived from NJ MMIS Shared Data Warehouse.  
Effective July 2013 this data query source was converted to the SDW.

\* Effective Feb '11 Transitional Housing Payments were removed from 'Other EA Payments' and added to 'Shelter Payments'.

TABLE 9 :

**EMERGENCY ASSISTANCE (BY COUNTY)**      **TOTAL NUMBER OF ELIGIBLE FAMILIES RECEIVING EMERGENCY ASSISTANCE PAYMENTS BY COUNTY (UNDUPLICATED CASES) FOR NOVEMBER 2020**

County	TOTAL	%	Temp	Motel	Shelter/Transitional	Other	SSI
	WFNJ/EA Families (Undupl)	CHNG From NOV 19	Rent Asst. Payments (Undupl)	Housing Payments (Undupl)	Housing Payments (Undupl)	WFNJ/EA Payments (Undupl)	Receipients Receiving EA **
ATLANTIC	67	-39.6%	64	2	0	4	51
BERGEN	45	-29.7%	36	1	0	12	23
BURLINGTON	33	-59.3%	4	10	18	3	32
CAMDEN	67	21.8%	23	17	23	12	48
CAPE MAY	18	-25.0%	10	8	0	0	10
CUMBERLAND	1	-80.0% *	0	0	1	0	1
ESSEX	94	-55.5%	47	0	47	2	0
GLOUCESTER	16	-40.7%	6	0	6	5	6
HUDSON	178	-5.8%	146	17	18	31	65
HUNTERDON	10	11.1%	7	0	0	3	8
MERCER	95	6.7%	57	20	15	18	58
MIDDLESEX	135	33.7% Δ	86	37	1	36	30
MONMOUTH	6	-40.0%	2	2	2	0	11
MORRIS	10	-67.7% *	10	0	0	1	5
OCEAN	110	35.8% Δ	92	15	0	31	7
PASSAIC	259	-0.8%	231	5	23	20	21
SALEM	1	-80.0% *	1	0	0	0	0
SOMERSET	83	20.3%	62	7	11	11	57
SUSSEX	2	0%	0	1	1	0	1
UNION	85	-21.3%	48	19	11	14	56
WARREN	28	27.3% Δ	16	9	3	1	2
NJ Total	1,343	-13.6%	948	170	180	204	492

Δ=higher caseload % change

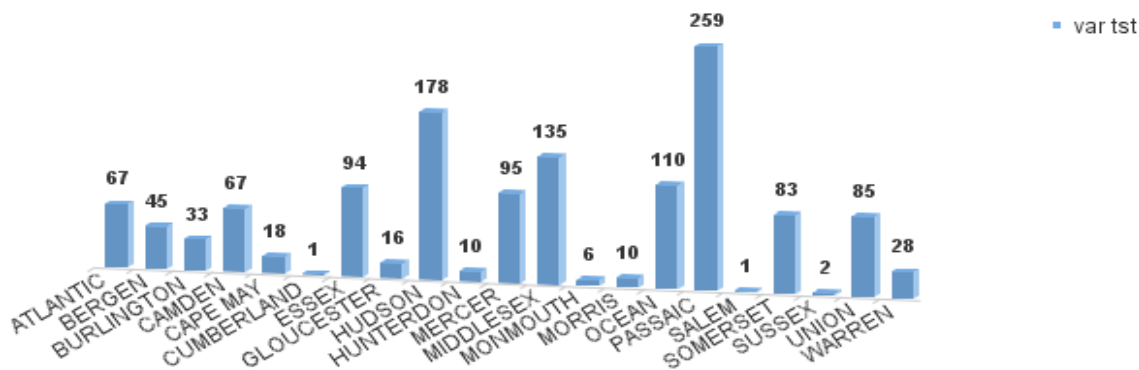
\*=lower caseload % change

\*\* SSI-EA includes pay codes 22 and 24, data is derived from NJ Division of Family Development FAMIS Report #FM430-03A

WFNJ/EA data is derived from NJ MMIS Shared Data Warehouse.

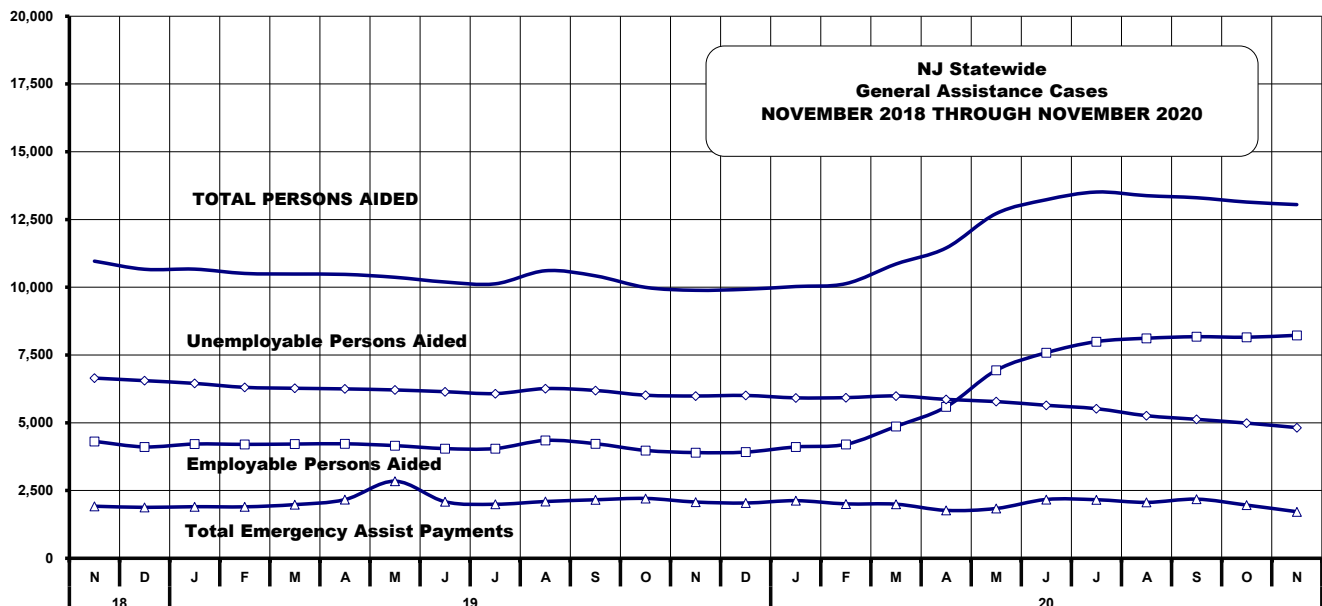
Effective July 2013 this data query source was converted to the SDW.

**Number WFNJ Families Receiving EA by County  
NOVEMBER 2020**



**Table 10**  
**GENERAL ASSISTANCE PROGRAM**  
**NUMBER OF EMPLOYABLE AND UNEMPLOYABLE RECIPIENTS AND EMERGENCY ASSISTANCE PAYMENTS FOR NOVEMBER 2020 - STATEWIDE**  
**NOVEMBER 2018 THROUGH NOVEMBER 2020**

	Total Cases						Emergency Assistance Cases			
	Employable	% Chng (1 Yr)	Unemployable	% Chng (1 Yr)	Total	% Chng (1 Yr)	Temporary Rental Assistance	Other GA-EA	Total	% Chng (1 Yr)
2018 NOV	4,314	-19.8%	6,649	-13.0%	10,963	-15.9%	923	998	1,921	-3.5%
DEC	4,110	-26.7%	6,554	-12.9%	10,664	-18.8%	872	1,007	1,879	-10.7%
2018 AVERAGE	4,839		7,036		11,875		950	1,081	2,031	
2019 JAN	4,216	-22.1%	6,453	-13.1%	10,669	-16.9%	886	1,018	1,904	-9.2%
FEB	4,203	-18.5%	6,307	-13.8%	10,510	-15.7%	876	1,023	1,899	-8.2%
MAR	4,215	-19.2%	6,273	-13.5%	10,488	-15.9%	904	1,077	1,981	-3.4%
APR	4,225	-19.0%	6,250	-12.9%	10,475	-15.5%	921	1,244	2,165	-2.3%
MAY	4,157	-17.9%	6,211	-12.9%	10,368	-15.0%	922	1,923	2,845	31.8%
JUN	4,047	-17.3%	6,147	-12.8%	10,194	-14.7%	920	1,166	2,086	3.5%
JUL	4,050	-15.1%	6,077	-13.0%	10,127	-13.8%	912	1,082	1,994	-1.1%
AUG	4,348	-12.4%	6,261	-13.4%	10,609	-13.0%	885	1,210	2,095	4.5%
SEP	4,228	-5.5%	6,193	-9.4%	10,421	-7.9%	884	1,275	2,159	10.3%
OCT	3,980	-11.1%	6,017	-11.8%	9,997	-11.5%	890	1,319	2,209	11.1%
NOV	3,900	-9.6%	5,988	-9.9%	9,888	-9.8%	878	1,198	2,076	8.1%
DEC	3,918	-4.7%	6,008	-8.3%	9,925	-6.9%	900	1,139	2,039	8.5%
2019 AVERAGE	4,124		6,182		10,306		898	1,223	2,121	
2020 JAN	4,109	-2.5%	5,919	-8.3%	10,028	-6.0%	910	1,216	2,126	11.7%
FEB	4,206	0.1%	5,928	-6.0%	10,134	-3.6%	875	1,132	2,007	5.7%
MAR	4,868	15.5%	5,990	-4.5%	10,858	3.5%	919	1,077	1,996	0.8%
APR	5,587	32.2%	5,862	-6.2%	11,449	9.3%	913	855	1,768	-18.3%
MAY	6,936	66.9%	5,783	-6.9%	12,719	22.7%	929	909	1,838	-35.4%
JUN	7,585	87.4%	5,645	-8.2%	13,230	29.8%	916	1,255	2,171	4.1%
JUL	7,994	97.4%	5,520	-9.2%	13,514	33.4%	905	1,256	2,161	8.4%
AUG	8,119	86.7%	5,261	-16.0%	13,380	26.1%	875	1,188	2,063	-1.5%
SEP	8,176	93.4%	5,127	-17.2%	13,303	27.7%	849	1,333	2,182	1.1%
OCT	8,156	104.9%	4,988	-17.1%	13,144	31.5%	855	1,107	1,962	-11.2%
NOV	8,228	111.0%	4,822	-19.5%	13,050	32.0%	835	884	1,719	-17.2%
2020 AVG to date	6,724		5,531		12,255		889	1,110	1,999	



Source: NJ Division of Family Development, GA Fiscal Unit

TABLE 11

GENERAL  
ASSISTANCE  
PROGRAMEMPLOYABLE AND UNEMPLOYABLE CASES  
AND EMERGENCY ASSISTANCE CASES RECEIVING PAYMENTS BY COUNTY

NOVEMBER 2020

County	Total Cases						Emergency Assistance Cases			
	Employable	% Chng (From Nov 19)	Unemployable	% Chng (From Nov 19)	Total	% Chng (From Nov 19)	Temporary Rental Assist.	Other GA-EA	Total	% Chng (From Nov 19)
ATLANTIC	693	93.0%	240	-14.3%	933	46.0%	77	10	87	4.8%
BERGEN	352	70.9%	251	-30.5%	603	6.3%	88	45	133	-2.9%
BURLINGTON	364	118.0%	269	-24.9%	633	20.6%	12	57	69	-63.5% *
CAMDEN	1,051	149.6%	599	-4.8%	1,650	57.1% Δ	50	123	173	13.1% Δ
CAPE MAY	90	50.0%	54	-16.9%	144	15.2%	23	40	63	12.5%
CUMBERLAND	282	67.9%	131	-35.1%	413	11.6%	0	4	4	-60.0%
ESSEX	929	31.8%	436	-18.4%	1,365	10.2%	28	52	80	-67.9% *
GLOUCESTER	191	51.6%	161	-18.7%	352	8.6%	5	21	26	-38.1%
HUDSON	1,493	322.9%	565	-19.2%	2,058	95.6% Δ	71	61	132	-10.2%
HUNTERDON	67	-2.9%	64	-21.0%	131	-12.7% *	12	17	29	7.4%
MERCER	337	108.0%	335	-19.5%	672	16.3%	48	16	64	-24.7%
MIDDLESEX	461	184.6%	275	-27.4%	736	36.0%	89	107	196	10.1%
MONMOUTH	166	140.6%	175	-13.4%	341	25.8%	0	52	52	15.6% Δ
MORRIS	127	28.3%	145	-19.0%	272	-2.2% *	54	22	76	-30.9%
OCEAN	306	65.4%	251	-11.9%	557	18.5%	77	59	136	25.9% Δ
PASSAIC	388	196.2%	397	-24.7%	785	19.3%	62	23	85	-24.8%
SALEM	129	486.4%	56	-18.8%	185	103.3% Δ	0	0	0	-100.0% *
SOMERSET	145	59.3%	71	-18.4%	216	21.3%	45	31	76	-10.6%
SUSSEX	56	9.8%	39	-11.4%	95	0.0% *	1	20	21	-43.2%
UNION	457	132.0%	202	-26.8%	659	39.3%	67	92	159	4.6%
WARREN	144	48.5%	106	-9.4%	250	16.8%	26	32	58	-7.9%
NJ TOTAL	8,228	111.0%	4,822	-19.5%	13,050	32.0%	835	884	1,719	-17.2%

Δ = ↑ Caseload %

\* = ↓ Caseload %

Source: NJ Division of Family Development, GA Fiscal Unit



**TABLE 12****OFFICE OF CHILD  
SUPPORT  
SERVICES****OFFICE OF CHILD SUPPORT SERVICES****Quarterly Performance Report****State Summary****TITLE IV-D SOURCE COLLECTION REPORT**

Comparison of Quarter-4 (FFY 19 vs. FFY 20)

COLLECTION SOURCE	TOTAL 7/1/2019 - 9/30/2019	% OF TOTAL COLLECTIONS	TOTAL 7/1/2020 - 9/30/2020	% OF TOTAL COLLECTIONS	DOLLAR CHANGE	% CHANGE
FEDERAL TAX	\$ 1,869,980	0.61%	\$ 11,055,867	3.66%	\$ 9,185,887	491.23%
STATE TAX	\$ 2,331,443	0.77%	\$ 1,658,040	0.55%	\$ (673,403)	-28.88%
UIB	\$ 6,507,378	2.14%	\$ 35,999,185	11.91%	\$ 29,491,807	453.21%
INC WITHHOLD	\$ 213,858,362	70.26%	\$ 190,408,068	63.02%	\$ (23,450,294)	-10.97%
FROM OTHER STATES	\$ 11,955,752	3.93%	\$ 12,577,981	4.16%	\$ 622,229	5.20%
ADMIN ENFORCEMENT	\$ 4,430,431	1.46%	\$ 1,532,534	0.51%	\$ (2,897,897)	-65.41%
OTHER	\$ 63,439,467	20.84%	\$ 48,903,181	16.19%	\$ (14,536,286)	-22.91%
TOTAL COLLECTIONS*	\$ 304,392,813	100%	\$ 302,134,856	100%	\$ (2,257,957)	-0.74%
DISBURSED COLLECTIONS**	\$ 269,216,031		\$ 266,129,047		\$ (3,086,984)	-1.15%

\* Includes collections on both current support and arrears.

\*\* Includes collections on both current support and arrears; also includes money sent to other states.

SOURCE: NJKiDS (Based on Federal Quarterly Report of Collections - OCSE-34A except Disbursed Collections)  
 Disbursed Collections obtained from Federal Data Report - OCSE-157, which is reported annually to Congress and  
 used in the calculation of incentive dollars earned by each state.

**TABLE 13****OFFICE OF CHILD  
SUPPORT SERVICES****OFFICE OF CHILD SUPPORT SERVICES****State Summary****TITLE IV-D PATERNITY ESTABLISHMENT REPORT**

Comparison of November (FFY 19 vs. FFY 20)

County Office	NOVEMBER 2019			NOVEMBER 2020			Increase or Decrease (-) from FFY 2019 to FFY 2020
	Total Children Born Out of Wedlock*	Number of Paternities Established	Percent of Paternities Established	Total Children Born Out of Wedlock*	Number of Paternities Established	Percent of Paternities Established	
Atlantic	6,617	6,563	99.2%	5,944	5,910	99.4%	0.2%
Bergen	3,292	3,213	97.6%	3,031	2,983	98.4%	0.8%
Burlington	5,234	5,058	96.6%	4,635	4,526	97.6%	1.0%
Camden	16,145	15,638	96.9%	14,996	14,599	97.4%	0.5%
Cape May	1,320	1,294	98.0%	1,176	1,160	98.6%	0.6%
Cumberland	6,761	6,693	99.0%	6,283	6,219	99.0%	0.0%
Essex	26,442	24,827	93.9%	23,493	22,298	94.9%	1.0%
Gloucester	4,644	4,569	98.4%	4,150	4,085	98.4%	0.0%
Hudson	10,631	10,134	95.3%	9,520	9,165	96.3%	0.9%
Hunterdon	288	287	99.7%	239	237	99.2%	-0.5%
Mercer	7,552	7,257	96.1%	6,593	6,383	96.8%	0.7%
Middlesex	6,729	6,521	96.9%	6,002	5,841	97.3%	0.4%
Monmouth	5,651	5,440	96.3%	4,733	4,590	97.0%	0.7%
Morris	1,345	1,327	98.7%	1,184	1,175	99.2%	0.6%
Ocean	5,011	4,860	97.0%	4,573	4,452	97.4%	0.4%
Passaic	11,076	10,556	95.3%	9,542	9,214	96.6%	1.3%
Salem	2,788	2,686	96.3%	2,588	2,500	96.6%	0.3%
Somerset	1,524	1,473	96.7%	1,308	1,272	97.2%	0.6%
Sussex	575	570	99.1%	489	485	99.2%	0.1%
Union	10,524	10,016	95.2%	9,643	9,189	95.3%	0.1%
Warren	985	975	99.0%	863	859	99.5%	0.6%
<b>NJ TOTALS</b>	<b>135,134</b>	<b>129,957</b>	<b>96.2%</b>	<b>120,985</b>	<b>117,142</b>	<b>96.8%</b>	<b>0.7%</b>

SOURCE: NJKiDS (Based on Federal Performance Measures - OCSE-157)

\* Information on Out of Wedlock Births obtained from NJ Bureau of Vital Statistics

**TABLE 14****OFFICE OF CHILD  
SUPPORT SERVICES****OFFICE OF CHILD SUPPORT SERVICES****State Summary****TITLE IV-D REPORT OF CASES WITH ORDERS**

Comparison of November (FFY 19 vs. FFY 20)

County Office	NOVEMBER 2019			NOVEMBER 2020			Increase or Decrease (-) from FFY 2019 to FFY 2020
	TOTAL CASES	CASES WITH ORDERS	% OF CASES WITH ORDERS	TOTAL CASES	CASES WITH ORDERS	% OF CASES WITH ORDERS	
Atlantic	12,014	10,853	90.3%	10,859	10,093	92.9%	2.6%
Bergen	11,884	11,415	96.1%	11,018	10,780	97.8%	1.8%
Burlington	13,473	12,234	90.8%	11,970	11,317	94.5%	3.7%
Camden	28,392	26,335	92.8%	26,675	25,110	94.1%	1.4%
Cape May	3,118	2,849	91.4%	2,787	2,613	93.8%	2.4%
Cumberland	11,963	11,362	95.0%	11,120	10,719	96.4%	1.4%
Essex	43,073	35,535	82.5%	38,602	33,039	85.6%	3.1%
Gloucester	10,593	10,098	95.3%	9,640	9,320	96.7%	1.4%
Hudson	21,122	17,850	84.5%	18,756	16,783	89.5%	5.0%
Hunterdon	1,448	1,368	94.5%	1,310	1,229	93.8%	-0.7%
Mercer	14,078	12,630	89.7%	12,473	11,419	91.5%	1.8%
Middlesex	17,417	16,324	93.7%	16,044	15,079	94.0%	0.3%
Monmouth	14,284	13,611	95.3%	12,485	11,982	96.0%	0.7%
Morris	5,887	5,726	97.3%	5,345	5,237	98.0%	0.7%
Ocean	14,776	14,051	95.1%	13,492	13,023	96.5%	1.4%
Passaic	21,276	16,919	79.5%	18,164	15,763	86.8%	7.3%
Salem	4,309	4,116	95.5%	3,966	3,812	96.1%	0.6%
Somerset	4,708	4,406	93.6%	4,227	4,005	94.7%	1.2%
Sussex	2,642	2,577	97.5%	2,411	2,368	98.2%	0.7%
Union	18,222	17,137	94.0%	16,862	16,089	95.4%	1.4%
Warren	3,059	2,824	92.3%	2,717	2,588	95.3%	2.9%
<b>NJ TOTALS</b>	<b>277,738</b>	<b>250,220</b>	<b>90.1%</b>	<b>250,923</b>	<b>232,368</b>	<b>92.6%</b>	<b>2.5%</b>

SOURCE: NJKiDS (Based on Federal Performance Measures - OCSE-157)

**TABLE 15****OFFICE OF CHILD  
SUPPORT SERVICES****OFFICE OF CHILD SUPPORT SERVICES****State Summary****TITLE IV-D COLLECTIONS ON CURRENT SUPPORT**

Comparison of November (FFY 19 vs. FFY 20)

County Office	NOVEMBER 2019			NOVEMBER 2020			Increase or Decrease (-) from FFY 2019 to FFY 2020
	Total Current Support Due	Total Current Support Distributed	Total Collection Rate	Total Current Support Due	Total Current Support Distributed	Total Collection Rate	
Atlantic	\$3,599,886	\$2,472,994	68.7%	\$3,432,890	\$2,363,339	68.8%	0.1%
Bergen	\$8,272,679	\$6,373,051	77.0%	\$7,699,987	\$5,912,407	76.8%	-0.3%
Burlington	\$5,535,775	\$3,942,146	71.2%	\$5,181,762	\$3,696,932	71.3%	0.1%
Camden	\$7,577,473	\$4,709,364	62.1%	\$7,221,345	\$4,628,544	64.1%	1.9%
Cape May	\$1,066,113	\$727,219	68.2%	\$978,774	\$694,725	71.0%	2.8%
Cumberland	\$2,967,020	\$1,814,035	61.1%	\$2,765,296	\$1,741,286	63.0%	1.8%
Essex	\$10,277,495	\$6,329,927	61.6%	\$9,767,984	\$6,159,855	63.1%	1.5%
Gloucester	\$4,080,934	\$2,793,154	68.4%	\$3,809,654	\$2,699,258	70.9%	2.4%
Hudson	\$6,885,196	\$4,767,533	69.2%	\$6,577,413	\$4,629,904	70.4%	1.1%
Hunterdon	\$1,204,387	\$976,847	81.1%	\$1,131,942	\$953,138	84.2%	3.1%
Mercer	\$3,988,712	\$2,540,129	63.7%	\$3,722,523	\$2,460,083	66.1%	2.4%
Middlesex	\$7,382,671	\$5,206,024	70.5%	\$6,990,048	\$5,083,860	72.7%	2.2%
Monmouth	\$7,087,675	\$5,306,663	74.9%	\$6,604,666	\$4,930,319	74.6%	-0.2%
Morris	\$4,313,005	\$3,304,965	76.6%	\$4,035,636	\$3,082,816	76.4%	-0.2%
Ocean	\$6,393,448	\$4,685,086	73.3%	\$5,962,035	\$4,451,306	74.7%	1.4%
Passaic	\$6,164,623	\$4,103,003	66.6%	\$5,925,714	\$4,037,323	68.1%	1.6%
Salem	\$1,114,059	\$662,606	59.5%	\$1,010,379	\$643,342	63.7%	4.2%
Somerset	\$2,946,372	\$2,379,322	80.8%	\$2,748,579	\$2,310,751	84.1%	3.3%
Sussex	\$1,730,014	\$1,394,270	80.6%	\$1,605,617	\$1,272,595	79.3%	-1.3%
Union	\$6,540,844	\$4,601,097	70.3%	\$6,257,008	\$4,484,737	71.7%	1.3%
Warren	\$1,276,613	\$947,278	74.2%	\$1,192,350	\$884,270	74.2%	0.0%
<b>NJ TOTALS</b>	<b>\$100,404,993</b>	<b>\$70,036,713</b>	<b>69.8%</b>	<b>\$94,621,603</b>	<b>\$67,120,790</b>	<b>70.9%</b>	<b>1.2%</b>

SOURCE: NJKiDS (Based on Federal Performance Measures - OCSE-157)

**TABLE 16****OFFICE OF CHILD  
SUPPORT SERVICES****OFFICE OF CHILD SUPPORT SERVICES****State Summary****TITLE IV-D CASES ARREARS COLLECTION REPORT**

Comparison of November (FFY 19 vs. FFY 20)

County Office	NOVEMBER 2019			NOVEMBER 2020			Increase or Decrease (-) from FFY 2019 to FFY 2020
	Total Cases with Arrears	Total Amount Collected	Average Arrears Collection per Case	Total Cases with Arrears	Total Amount Collected	Average Arrears Collection per Case	
Atlantic	7,249	\$622,112	\$85.82	6,708	\$818,324	\$121.99	\$36.17
Bergen	7,407	\$930,745	\$125.66	6,936	\$1,107,728	\$159.71	\$34.05
Burlington	8,143	\$712,613	\$87.51	7,520	\$1,094,016	\$145.48	\$57.97
Camden	16,612	\$1,195,635	\$71.97	15,810	\$2,021,148	\$127.84	\$55.87
Cape May	1,997	\$157,612	\$78.92	1,814	\$236,668	\$130.47	\$51.54
Cumberland	7,483	\$413,072	\$55.20	6,927	\$738,496	\$106.61	\$51.41
Essex	22,470	\$1,976,063	\$87.94	20,860	\$3,236,297	\$155.14	\$67.20
Gloucester	6,794	\$579,790	\$85.34	6,309	\$863,028	\$136.79	\$51.45
Hudson	12,415	\$1,106,721	\$89.14	11,229	\$1,472,187	\$131.11	\$41.96
Hunterdon	843	\$139,270	\$165.21	742	\$183,634	\$247.49	\$82.28
Mercer	8,404	\$783,618	\$93.24	7,792	\$1,000,123	\$128.35	\$35.11
Middlesex	10,882	\$1,068,553	\$98.19	9,882	\$1,371,924	\$138.83	\$40.64
Monmouth	8,679	\$980,900	\$113.02	7,842	\$1,249,254	\$159.30	\$46.28
Morris	3,838	\$518,796	\$135.17	3,509	\$564,629	\$160.91	\$25.74
Ocean	9,123	\$913,619	\$100.14	8,424	\$1,256,225	\$149.12	\$48.98
Passaic	11,492	\$981,172	\$85.38	10,752	\$1,511,036	\$140.54	\$55.16
Salem	2,547	\$156,893	\$61.60	2,355	\$269,255	\$114.33	\$52.73
Somerset	2,939	\$407,219	\$138.56	2,629	\$493,569	\$187.74	\$49.18
Sussex	1,734	\$205,448	\$118.48	1,565	\$249,388	\$159.35	\$40.87
Union	11,383	\$1,034,927	\$90.92	10,481	\$1,585,014	\$151.23	\$60.31
Warren	1,749	\$147,611	\$84.40	1,633	\$216,286	\$132.45	\$48.05
<b>NJ TOTALS</b>	<b>164,183</b>	<b>\$15,032,390</b>	<b>\$91.56</b>	<b>151,719</b>	<b>\$21,538,229</b>	<b>\$141.96</b>	<b>\$50.40</b>

SOURCE:OCSE-157 Child Support Enforcement Annual Data Report

**Table 17****WORK FIRST NEW JERSEY STATISTICAL SUMMARY****WFNJ****NOVEMBER 2020**

COUNTY	EMPLOYMENT DIRECTED ACTIVITIES			EMPLOYED OPEN (WFNJ RECIPIENT)	SUPPORT SERVICES ON ACTIVE CASE		CLOSED FOR EMPLOYMENT THIS MONTH	POST ASSISTANCE CHILD CARE
	CWEP	ALL	JOB		CHILD CARE	TRAINING REL. EXPENSES		
		OTHER	SEARCH					
		TRAINING						
ATLANTIC	0	25	0	24	16	34	4	45
BERGEN	0	4	0	3	43	0	1	10
BURLINGTON	0	10	0	8	37	0	1	44
CAMDEN	30	125	0	26	149	0	8	62
CAPE MAY	0	2	0	1	5	1	1	5
CUMBERLAND	0	24	0	3	27	0	4	9
ESSEX	3	109	0	54	235	25	10	175
GLOUCESTER	0	6	0	7	10	1	3	30
HUDSON	4	62	2	37	268	2	13	73
HUNTERDON	0	0	0	1	1	0	0	1
MERCER	9	31	0	25	113	2	3	71
MIDDLESEX	0	22	0	13	17	0	1	64
MONMOUTH	0	10	1	16	28	0	1	42
MORRIS	0	6	0	1	11	0	1	3
OCEAN	5	24	0	8	17	1	3	29
PASSAIC	0	33	1	17	117	2	4	21
SALEM	0	11	0	2	11	0	1	2
SOMERSET	0	4	0	6	33	1	2	18
SUSSEX	0	1	0	3	1	0	2	2
UNION	0	19	0	11	35	0	0	12
WARREN	0	8	0	13	7	0	0	8
STATE	51	536	4	279	1,181	69	63	726

Data is derived from NJ Division of Family Development's FAMIS Reports RM064-01 &amp; RM703-51, AdHoc Reports 5549 &amp; 5598 and SDW Report WR00022WZ\_CC

**DIVISION OF FAMILY DEVELOPMENT CURRENT PROGRAM STATISTICS  
NOVEMBER 2020**

## **ACRONYMS**

**EMERGENCY ASSISTANCE (EA)** - Payments to those eligible for WFNJ/TANF or WFNJ/GA, authorized during the 30 consecutive days immediately following the emergency (defined as a substantial loss of shelter, food, clothing, or household furnishings by fire, flood or other similar disaster) or if eligible individual or family is in an imminent or actual state of homelessness.

**NJ SNAP** - Formerly the Food Stamp Program, now known as **NJ SNAP** (NJ Supplemental Nutrition Assistance Program) authorized by Congress as a nutritional supplement program to provide low income households with more food of greater variety and better nutrition. Program eligibility is based on household income, resources, and expenses for medical, shelter, and dependent care. CWA staff refers certain recipients to the New Jersey Department of Labor for participation in the Food Stamp Employment and Training Program.

**FAMIS:** Family Assistance Management Information System

**GAAS:** General Assistance Automated System

**NJKIDS:** New Jersey Kids Deserve Support (Child Support Information Management System)

**NJ MMIS SHARED DATA WAREHOUSE:** The Shared Data Warehouse (SDW) is the repository for New Jersey's DFD and Medicaid data. Since 2003, OptumInsight has administered the SDW and provided access to the data through a reporting tool known as Business Objects.

**OMEGA:** Online Management of Economic Goal Achievement

**SSI-EA:** Supplemental Security Income-Emergency Assistance

**WFNJ:** Work First New Jersey - Fully implemented July 1, 1997, this is New Jersey's welfare reform program which responds to the requirements of the Federal Personal Responsibility and Work Opportunity Reconciliation Act (**PRWORA**) of 1996. PRWORA established Temporary Assistance for Needy Families (**TANF**) as the replacement for AFDC cash assistance. WFNJ includes two segments, **WFNJ/TANF** for families with children, and **WFNJ/GA** (General Assistance) for single adults and couples without dependent children. WFNJ emphasizes achieving self-sufficiency and limits lifetime receipt of financial assistance to a total of five years.

**DIVISION OF FAMILY DEVELOPMENT CURRENT PROGRAM STATISTICS  
NOVEMBER 2020**

## **EXPLANATORY NOTES**

The Department of Human Services Division of Family Development provides basic income and an opportunity to achieve self-sufficiency for individuals and families served by the Division's programs. The Division provides leadership, direction and supervision to those public agencies responsible for administering those programs and plans for and develops policies to promote self-sufficiency.

### **WFNJ Statistical Summary (Table 17)**

**Employment Directed Activities (EDA)** - From Activities Summary Report (OMEGA report # RM064). Unduplicated count of persons participating in Community Work Experience Program (CWEP), All Other Training, or Job Search.

**Number of Persons Employed This Month, Still Receiving TANF** Individuals with open "empl" activity on OMEGA. Ad hoc report.

**Participants Receiving Child Care Services** - From Issuance Disbursement Summary (OMEGA report # RM703). Total number of active participants who show receipt of **Child Care**.

**Number of Persons Closed on FAMIS Due to Employment** - From FAMIS report #5549-RM-2.

**Post TANF and Receiving Child Care** - Persons no longer in receipt of TANF but still receiving child care. From Share Data Warehouse Child Care case count based on Child Care payments (SDW report WR00022WZ\_CC ).