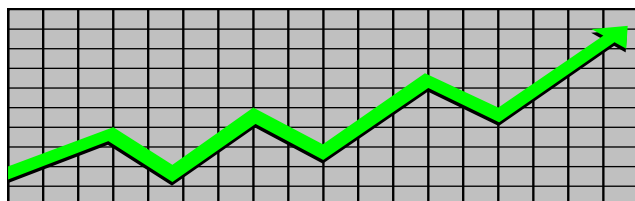


**State of New Jersey
Department of Human Services
Division of Family Development**

CURRENT PROGRAM STATISTICS



November 2021
Natasha Johnson, Assistant Commissioner

TABLE OF CONTENTS

HIGHLIGHTS:

WFNJ/TANF	ii
NJ SNAP	ii
EMERGENCY ASSISTANCE	ii
GENERAL ASSISTANCE	iii
GA Emergency Assistance.....	iii
GA Program.....	iii
CHILD SUPPORT SERVICES	iii
WORK FIRST NEW JERSEY (WFNJ)	iii
STATISTICS- BY STATE & COUNTY	1
Table 1: WFNJ/TANF Families & Persons (NJ Statewide) November 2019 to 2021.....	1
Table 2: WFNJ/TANF Families (by County)- November 2021.....	2
Table 2B: WFNJ/TANF Persons, Adults, & Children (by County)- November 2021.....	3
Table 3: TANF Work Participation Rates Over 12 Month Period (by County)- November 2021.....	4
Table 4: TANF Work Participation Rates Over 12 Month Period (NJ Statewide)- November 2021..	5
Table 5: NJ SNAP Households/Persons (NJ Statewide) November 2019 to 2021.....	6
Table 6: NJ SNAP Recipient Trends (NJ Statewide) November 2019 to 2021.....	7
Table 7: NJ SNAP Households/Persons (by County)- November 2021.....	8
Table 8: Emergency Assistance Program (NJ Statewide) November 2019 to 2021.....	9
Table 9: Emergency Assistance Program (by County)- November 2021.....	10
Table 10: General Assistance Program (NJ Statewide) November 2019 to 2021.....	11
Table 11: General Assistance Program (by County)- November 2021.....	12
Table 12: Child Support Services Distributions (NJ Statewide) FFY 2021.....	13
Table 13: Child Support Services Paternities Established- November 2021.....	14
Table 14: Child Support Services Cases With Orders- November 2021.....	15
Table 15: Child Support Services Collections On Current Support- November 2021.....	16
Table 16: Child Support Services Cases With Payments On Arrears- November 2021.....	17
Table 17: WFNJ Statistical Summary- November 2021.....	18
ACRONYMS	19
EXPLANATORY NOTES	20
WFNJ Statistical Summary (Table 17).....	20

DIVISION OF FAMILY DEVELOPMENT CURRENT PROGRAM STATISTICS

NOVEMBER 2021

Each month the Division of Family Development publishes its program statistics for: WFNJ/TANF, NJ SNAP, Emergency Assistance, General Assistance, and Child Support Services. When possible, information is provided separately for children and adults. Many tables also provide trend data with information broken down by county for readers to consider. This report is compiled and prepared by The Bureau of Research & Reporting.

WFNJ/TANF

- As of the end of November, the TANF caseload had decreased by 1,476 cases, from 10,835 in November 2020 to 9,359 in November 2021; a decrease of -13.6%.
- The counties with caseloads that increased the most since November 2020 were Morris (6.3%), Salem (2.4%), and Hunterdon (2.3%).
- The counties with caseloads that decreased the most since November 2020 were Sussex (-35.7%), Essex (-35.6%), and Warren (-32.4%).
- Of the WFNJ/TANF cases, 2,816 or 30.1% were child-only in November 2021.
- The counties with the most child-only cases were Camden (498), Hudson (327), and Passaic (298).
- Hudson (3,657), Camden (3,417), and Essex (2,982) counties had the greatest number of persons receiving TANF in November 2021.

NJ SNAP (Formerly FOOD STAMPS)

- In November 2021, there were 465,310 households receiving NJ SNAP benefits. The number of NJ SNAP households increased by 59,099 or 14.5%, since November 2020.
- There were 898,380 persons receiving NJ SNAP benefits as of November 2021; an increase of 107,613 or 13.6% since November 2020.
- The counties having the highest caseload increase since November 2020 were Essex (23.9%), Atlantic (19.2%), and Union (19%).

EMERGENCY ASSISTANCE

- There were 1,244 TANF families receiving Emergency Assistance (EA) in November 2021; a decrease of 99 or -7.4% since November 2020.
- In November 2021, EA payments were made for 563 SSI recipients.

DIVISION OF FAMILY DEVELOPMENT CURRENT PROGRAM STATISTICS NOVEMBER 2021

- There were 1,722 GA cases with Emergency Assistance payments in November 2021; an increase of 3 or 0.2% since November 2020.
- The counties that showed the highest percent increase in Emergency Assistance payments were Essex (163.8%), Burlington (58%), and Monmouth (50%).
- The counties that showed the highest percent decrease in Emergency Assistance payments were Gloucester (-73.1%), Cape May (-60.3%), and Somerset (-51.3%).

GENERAL ASSISTANCE

- The total numbers of cases receiving GA has increased from 13,050 to 13,521 since November 2020; an increase of 3.6%.
- There were 9,668 Employable GA and 3,853 Unemployable GA cases in November 2021.
- The counties that showed a percent increase for GA cases were Hunterdon (17.6%), Camden (17.3%), and Hudson (16.3%) since November 2020.
- The counties that showed the highest percent decrease for GA cases since November 2020 were Gloucester (-26.4%), Sussex (-25.3%), and Warren (-21.6%).
- In November 2021, GA cases showed a 2.6% increase since October 2021.

CHILD SUPPORT SERVICES (QUARTERLY REPORT)

- The total collection for the Child Support Services Program was about \$295 million from July 2021 to September 2021; a decrease of -2.5% over the same period from FFY 2020.
- Total distributions decreased -3.1% from September 2020.

WORK FIRST NEW JERSEY (WFNJ)

- During the report month of November 2021, there were 268 families in which at least one member was employed and an additional 87 families whose WFNJ assistance cases were closed due to employment - related earnings.
- The three counties with the greatest number of employed active WFNJ recipients were: Essex (48), Hudson (43), and Atlantic (30).
- There were 236 former TANF cases receiving post-TANF support in the form of child care assistance.

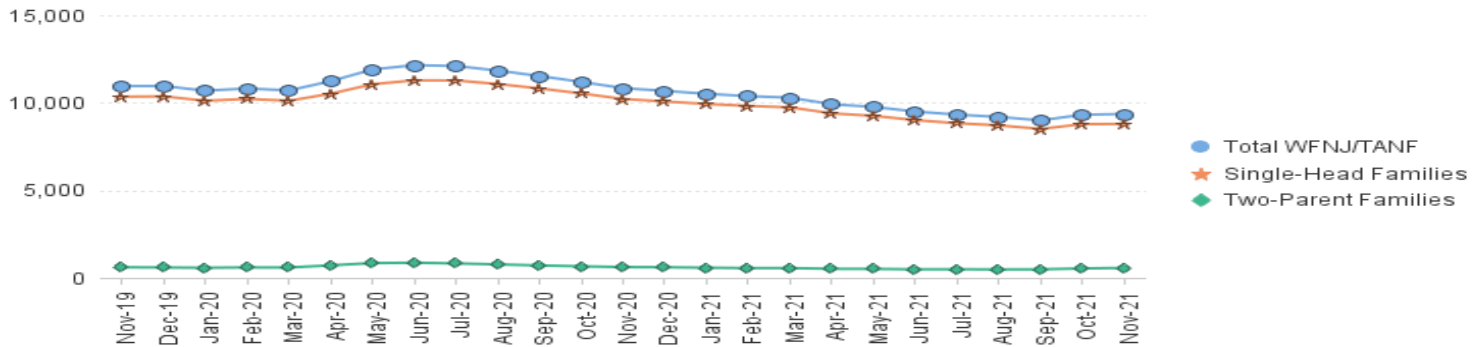
TABLE 1:
WFNJ/TANF
PROGRAM

STATEWIDE NUMBER OF APPLICATIONS AND TERMINATIONS DURING NOVEMBER 2021
NUMBER OF ELIGIBLE FAMILIES & PERSONS RECEIVING WFNJ/TANF FOR NOVEMBER 2021

NOVEMBER 2019 THROUGH NOVEMBER 2021

		Cases Added	Cases Closed	Child-Only Cases ‡	Total Single-Head Families	2-Parent Families	Total WFNJ/TANF Families	%CHNG (1 Yr.)	Total Persons	%CHNG (1 Yr.)	Adults	Children
2019	NOV	1,181	1,159	3,664	10,348	605	10,953	-11.1%	27,644	-10.1%	7,894	19,750
	DEC	1,053	1,042	3,689	10,364	593	10,957	-9.5%	27,766	-8.4%	7,861	19,905
2019	Average	1,050	1,208	3,794	10,298	595	10,893		27,198		7,694	19,504
2020	JAN	921	1,183	3,646	10,113	576	10,689	-8.3%	27,129	-6.5%	7,619	19,510
	FEB	1,066	1,007	3,669	10,222	596	10,818	-3.1%	27,517	-1.1%	7,745	19,772
	MAR	915	1,024	3,612	10,113	592	10,705	-3.7%	27,196	-1.5%	7,685	19,511
	APR	1,179	712	3,621	10,519	716	11,235	3.7%	28,765	6.7%	8,330	20,435
	MAY	832	232	3,696	11,057	845	11,902	10.2%	30,734	14.4%	9,051	21,683
	JUN	539	278	3,722	11,281	866	12,147	12.9%	31,370	17.6%	9,291	22,079
	JUL	458	526	3,686	11,274	826	12,100	14.2%	31,216	18.6%	9,240	21,976
	AUG	410	660	3,665	11,070	768	11,838	10.2%	30,454	13.9%	8,941	21,513
	SEP	475	796	3,603	10,817	711	11,528	7.3%	29,531	10.2%	8,636	20,895
	OCT	534	904	3,564	10,532	659	11,191	7.6%	28,657	9.6%	8,286	20,371
	NOV	419	767	3,470	10,218	617	10,835	-1.1%	27,738	0.3%	7,982	19,756
	DEC	434	595	3,410	10,071	607	10,678	-2.5%	27,371	-1.4%	7,875	19,496
2020	Average	682	724	3,614	10,607	698	11,306		28,973		8,390	20,583
2021	JAN	400	585	3,379	9,932	580	10,512	-1.7%	26,960	-0.6%	7,713	19,247
	FEB	378	504	3,347	9,818	559	10,377	-4.1%	26,520	-3.6%	7,589	18,931
	MAR	397	481	3,311	9,735	557	10,292	-3.9%	26,335	-3.2%	7,538	18,797
	APR	298	704	3,224	9,395	518	9,913	-11.8%	25,276	-12.1%	7,207	18,069
	MAY	264	510	3,209	9,250	513	9,763	-18.0%	24,858	-19.1%	7,067	17,791
	JUN	373	636	3,141	9,008	489	9,497	-21.8%	24,146	-23.0%	6,845	17,301
	JUL	391	590	3,068	8,829	493	9,322	-23.0%	23,785	-23.8%	6,747	17,038
	AUG	415	544	3,029	8,709	482	9,191	-22.4%	23,445	-23.0%	6,644	16,801
	SEP	388	588	2,945	8,507	489	8,996	-22.0%	23,009	-22.1%	6,540	16,469
	OCT	833	564	2,921	8,779	538	9,317	-16.7%	23,888	-16.6%	6,934	16,954
	NOV	656	614	2,816	8,791	568	9,359	-13.6%	24,282	-12.5%	7,111	17,171
2021	Average to date	436	575	3,126	9,159	526	9,685		24,773		7,085	17,688

NJ STATEWIDE
Eligible Families Receiving WFNJ/TANF
NOVEMBER 2019 THROUGH NOVEMBER 2021



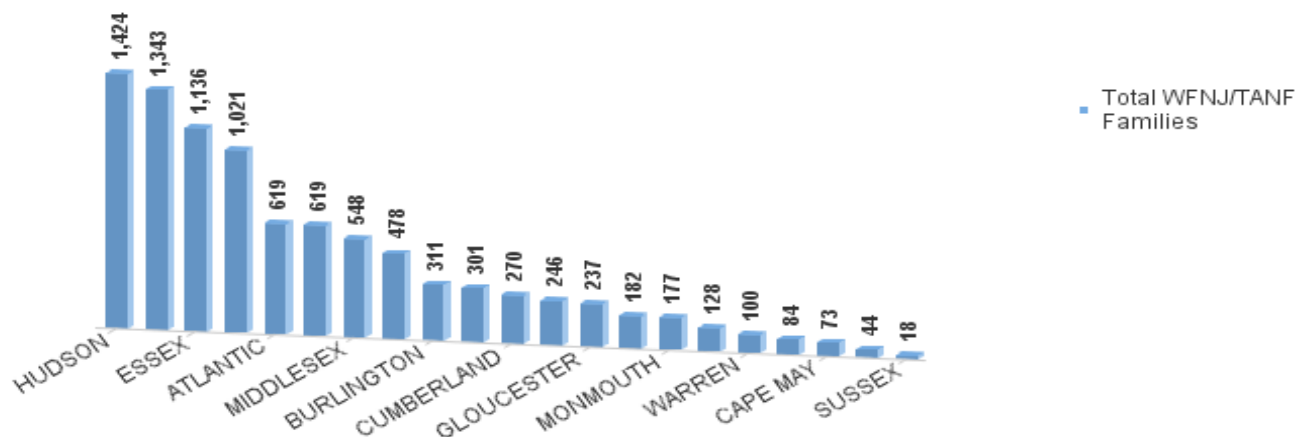
Data is derived from NJ MMIS Shared Data Warehouse Issuance files.
Effective July 2013 this data query source was converted to the SDW

‡ Child-only cases are defined as families in which no eligible adult receives TANF program benefits, yet the family continues to be headed by atleast one of the biological parents, or grandparents, or other appropriate adult.

TABLE 2:
WFNJ/TANF NUMBER OF APPLICATIONS AND TERMINATIONS BY COUNTY DURING NOVEMBER 2021
PROGRAM NUMBER OF ELIGIBLE FAMILIES RECEIVING WFNJ/TANF FOR NOVEMBER 2021

County	Cases Added	Cases Closed **	Child-	1-Adult Cases	Total	2-Parent Families	Total	%CHNG (3 Mon)	%CHNG (1 Yr.)
			Only Cases ‡		Single-Head Families		WFNJ/TANF Families		
ATLANTIC	42	27	242	343	585	34	619	6.7%	-9.0%
BERGEN	15	6	55	174	229	17	246	8.4%	-2.8%
BURLINGTON	25	17	109	189	298	13	311	7.6%	-20.5%
CAMDEN	73	60	498	777	1,275	68	1,343	7.9%	-4.3%
CAPE MAY	2	0	29	41	70	3	73	15.9%	-20.7%
CUMBERLAND	22	12	109	147	256	14	270	6.3%	-13.7%
ESSEX	95	161	289	797	1,086	50	1,136	-9.3%	-35.6% *
GLOUCESTER	20	16	87	144	231	6	237	7.2%	-15.7%
HUDSON	128	109	327	999	1,326	98	1,424	7.0%	-12.6%
HUNTERDON	3	1	7	32	39	5	44	0.0%	2.3% Δ
MERCER	31	55	194	400	594	25	619	0.8%	-10.2%
MIDDLESEX	48	35	184	336	520	28	548	5.4%	-0.2%
MONMOUTH	16	7	58	112	170	7	177	7.9%	-14.9%
MORRIS	7	6	20	51	71	13	84	9.1%	6.3% Δ
OCEAN	17	16	70	220	290	11	301	2.4%	-9.1%
PASSAIC	39	34	298	671	969	52	1,021	3.2%	-8.8%
SALEM	19	10	32	83	115	13	128	10.3%	2.4% Δ
SOMERSET	7	5	49	122	171	11	182	10.3%	-8.5%
SUSSEX	2	3	4	11	15	3	18	0.0%	-35.7% *
UNION	40	24	127	263	390	88	478	11.7%	-6.5%
WARREN	5	10	28	63	91	9	100	-4.8%	-32.4% *
NJ Total	656	614	2,816	5,975	8,791	568	9,359	4.0%	-13.6%

Total WFNJ/TANF Families
NOVEMBER 2021
By County



Data is derived from NJ MMIS Shared Data Warehouse Issuance files.

Effective July 2013 this data query source was converted to the SDW

‡ Child-only cases are defined as families in which no eligible adult receives TANF program benefits, yet the family continues to be headed by at least one of the biological parents, or grandparents, or other appropriate adult

** 'Cases closed' include cases that received a benefit in the prior month, but did not receive any TANF benefit for the report month.

Δ=higher caseload % change

*=lower caseload % change

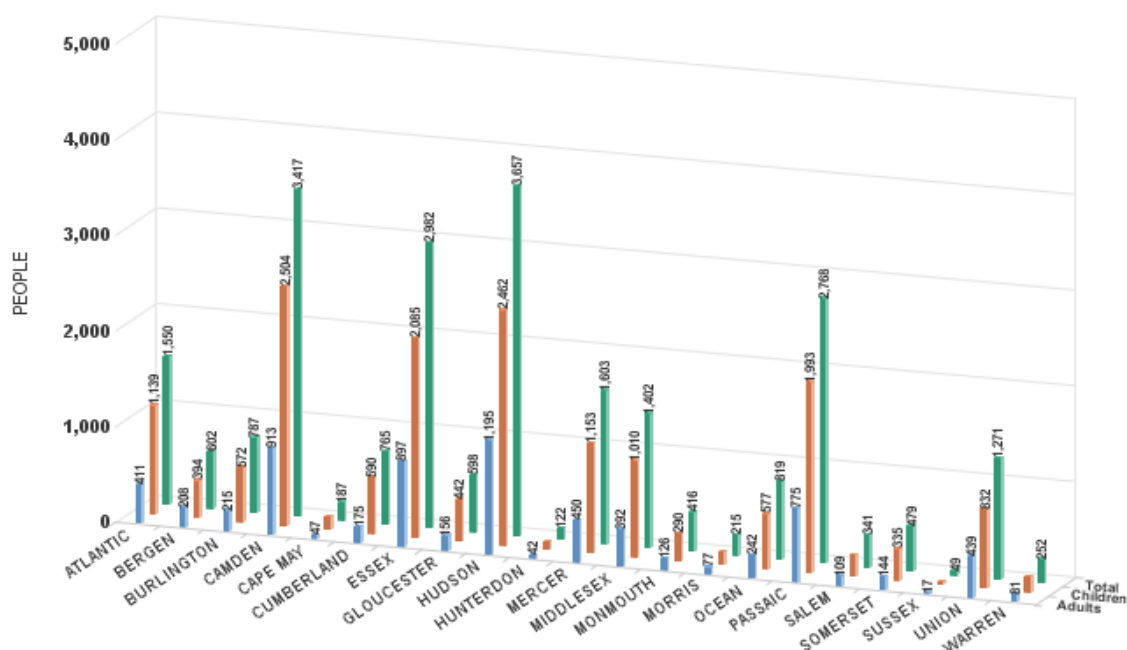
TABLE 2B :

WFNJ/TANF
PROGRAMNUMBER OF PARTICIPATING PERSONS, ADULTS, AND CHILDREN
BY COUNTY FOR NOVEMBER 2021**PERSONS**

County	Adults	Children	Child/Adult Ratio	Total Persons	% Chng (1 Yr)	Persons Per Case
ATLANTIC	411	1,139	2.77	1,550	-9.4%	2.50
BERGEN	208	394	1.89	602	-5.9%	2.45
BURLINGTON	215	572	2.66	787	-21.8%	2.53
CAMDEN	913	2,504	2.74	3,417	-4.0%	2.54
CAPE MAY	47	140	2.98	187	-16.5%	2.56
CUMBERLAND	175	590	3.37	765	-12.0%	2.83
ESSEX	897	2,085	2.32	2,982	-34.9% *	2.63
GLOUCESTER	156	442	2.83	598	-10.1%	2.52
HUDSON	1,195	2,462	2.06	3,657	-11.4%	2.57
HUNTERDON	42	80	1.90	122	3.4% Δ	2.77
MERCER	450	1,153	2.56	1,603	-6.8%	2.59
MIDDLESEX	392	1,010	2.58	1,402	2.0%	2.56
MONMOUTH	126	290	2.30	416	-12.4%	2.35
MORRIS	77	138	1.79	215	9.1% Δ	2.56
OCEAN	242	577	2.38	819	-5.8%	2.72
PASSAIC	775	1,993	2.57	2,768	-6.9%	2.71
SALEM	109	232	2.13	341	9.3% Δ	2.66
SOMERSET	144	335	2.33	479	-7.0%	2.63
SUSSEX	17	32	1.88	49	-27.9% *	2.72
UNION	439	832	1.90	1,271	-4.8%	2.66
WARREN	81	171	2.11	252	-36.8% *	2.52
NJ Total	7,111	17,171	2.41	24,282	-12.5%	2.59

Δ=higher caseload % change

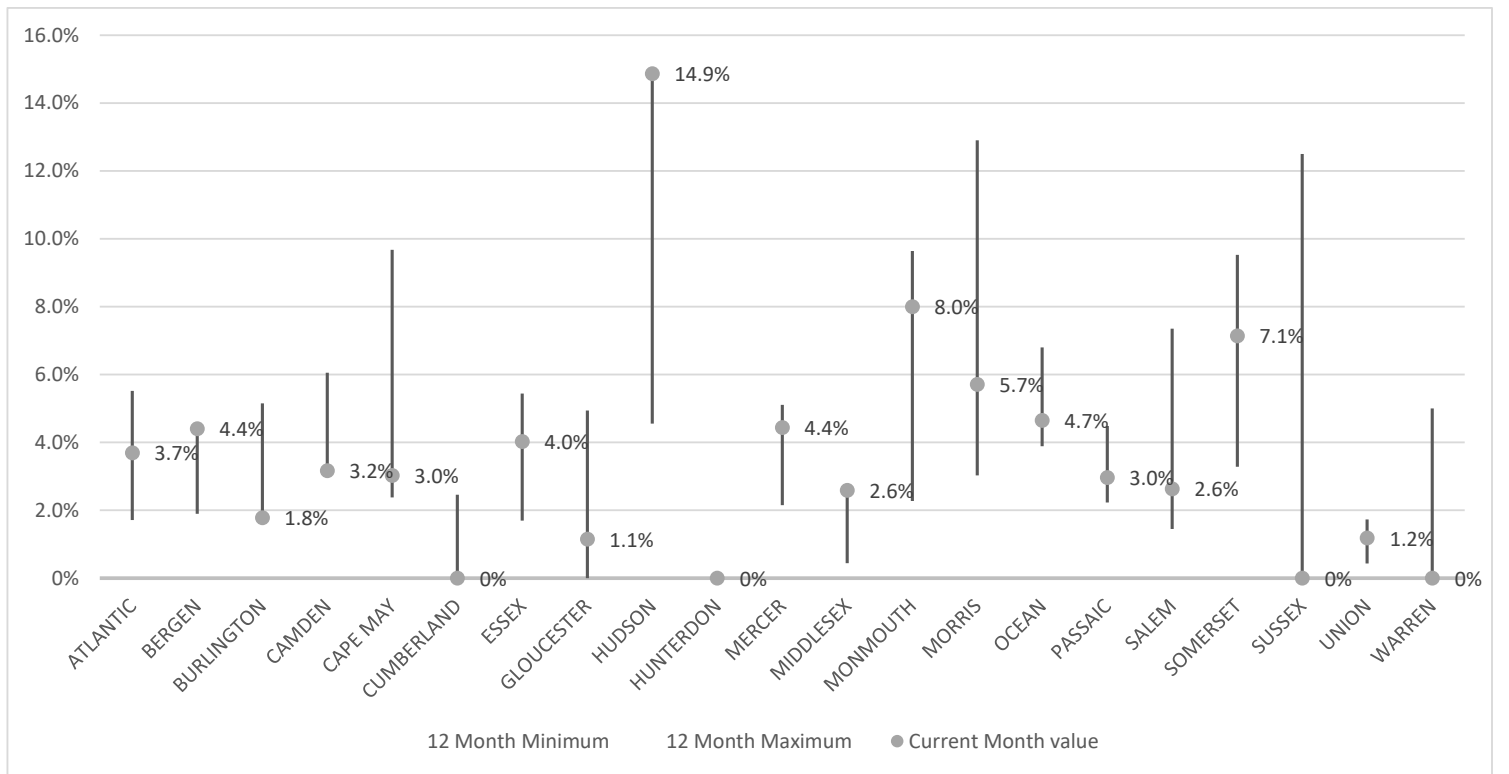
*=lower caseload % change



Data is derived from NJ MMIS Shared Data Warehouse Issuance files.
Effective July 2013 this data query source was converted to the SDW

TABLE 3 :

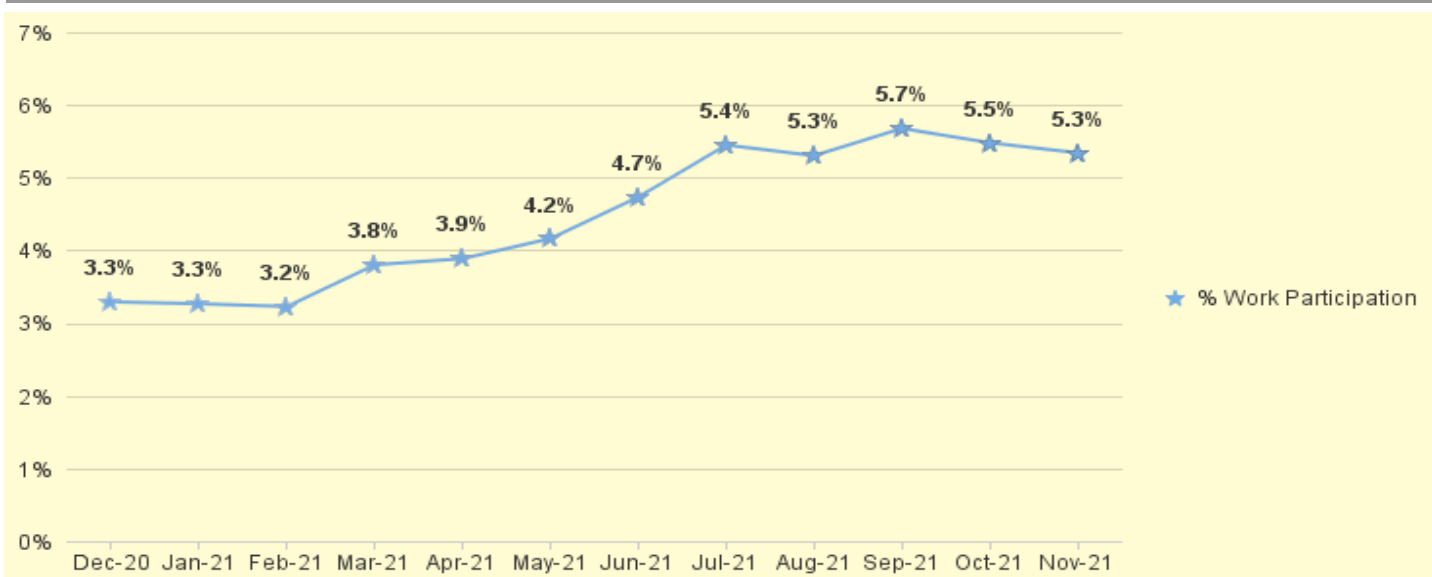
**Work Participation Rates Achieved Over 12 Month Period
Ending with NOVEMBER 2021**



Data is derived from NJ MMIS Shared Data Warehouse Issuance files.
Effective July 2013 this data query source was converted to the SDW

TABLE 4 :

**WFNJ/TANF Work Participation Rates
for 12-Month Period Ending with NOVEMBER 2021 Statewide**



* The Work Participation rate measures the number of countable Temporary Assistance for Needs Families (TANF) participants based on federal formula. The reported rate is considered to be preliminary until officially calculated by the federal government soon after the close of each federal fiscal year.

TABLE 5 :

NJ SNAP
(FOOD STAMPS)

NUMBER OF PARTICIPATING HOUSEHOLDS, PERSONS, ADULTS
AND CHILDREN FOR NOVEMBER 2021 (STATEWIDE)

NOVEMBER 2019 THROUGH NOVEMBER 2021											
HOUSEHOLDS						PERSONS				Age 60+	People with a disability
		WFNJ/ TANF	Other low income	Total	% CHNG (1 YR)	Adults	Children	TOTAL	% CHNG (1 YR)		
2019	NOV	10,580	331,660	342,240	-5.1%	364,880	310,523	675,403	-5.8%	119,560	202,867
	DEC	10,445	330,157	340,602	-4.9%	362,992	308,279	671,271	-5.8%	119,046	205,081
2019	Average	10,344	335,093	345,437		366,571	316,091	682,661		121,550	203,671
2020	JAN	10,201	325,866	336,067	-6.3%	358,028	301,901	659,929	-7.4%	117,898	201,955
	FEB	10,245	326,468	336,713	0.4%	358,670	302,524	661,194	0.5%	117,775	201,863
	MAR	10,328	324,689	335,017	-4.8%	357,989	299,375	657,364	-5.8%	117,369	201,521
	APR	11,112	337,037	348,149	0.3%	373,744	309,095	682,839	-0.6%	118,173	204,375
	MAY	11,513	353,998	365,511	5.2%	394,281	323,636	717,917	4.4%	119,744	208,152
	JUN	11,522	358,302	369,824	6.7%	398,959	326,357	725,316	5.9%	120,137	209,224
	JUL	11,336	364,797	376,133	9.4%	405,652	329,166	734,818	8.1%	120,881	211,115
	AUG	11,044	373,293	384,337	10.8%	414,644	333,705	748,349	9.0%	118,173	204,375
	SEP	10,928	384,063	394,991	15.7%	426,710	342,621	769,331	14.1%	122,341	214,255
	OCT	10,605	393,716	404,321	17.8%	437,538	350,440	787,978	16.2%	123,068	216,012
	NOV	10,335	395,876	406,211	18.7%	440,136	350,631	790,767	17.1%	123,104	216,208
	DEC	10,308	401,212	411,520	20.8%	446,083	354,408	800,491	19.3%	123,498	221,131
2020	Average	10,790	361,610	372,400		401,036	326,988	728,024		120,180	209,182
2021	JAN	10,214	409,050	419,264	24.8%	454,910	360,490	815,400	23.6%	123,751	221,129
	FEB	9,980	413,080	423,060	25.6%	459,801	362,760	822,561	24.4%	123,888	221,585
	MAR	9,632	418,259	427,891	27.7%	465,302	366,223	831,525	26.5%	124,614	222,961
	APR	9,474	423,186	432,660	24.3%	470,412	369,625	840,037	23.0%	125,182	224,256
	MAY	9,371	428,961	438,332	19.9%	476,827	373,151	849,978	18.4%	125,750	225,339
	JUN	9,833	440,525	450,358	21.8%	490,430	393,310	883,740	21.8%	126,085	227,479
	JUL	9,067	437,889	446,956	18.8%	485,975	379,528	865,503	17.8%	126,552	227,352
	AUG	9,070	442,333	451,403	17.4%	490,577	383,106	873,683	16.7%	127,091	228,513
	SEP	9,561	447,902	457,463	15.8%	497,122	390,345	887,467	15.4%	127,550	229,863
	OCT	9,822	452,139	461,961	14.3%	502,415	388,925	891,340	13.1%	128,700	231,751
	NOV	9,967	455,343	465,310	14.5%	506,476	391,904	898,380	13.6%	129,292	233,050
2021	Average to date	9,636	433,515	443,151		481,841	378,124	859,965		126,223	226,662

This Table is based on those Households & Persons that recived SNAP issuances (benefits) during the month

Data is derived from NJ MMIS Shared Data Warehouse.

Effective July 2013 this data query source was converted to the SDW.

* Age 60+ and People with a disability columns are independent subsets of total persons. An individual might appear in both columns

TABLE 6:

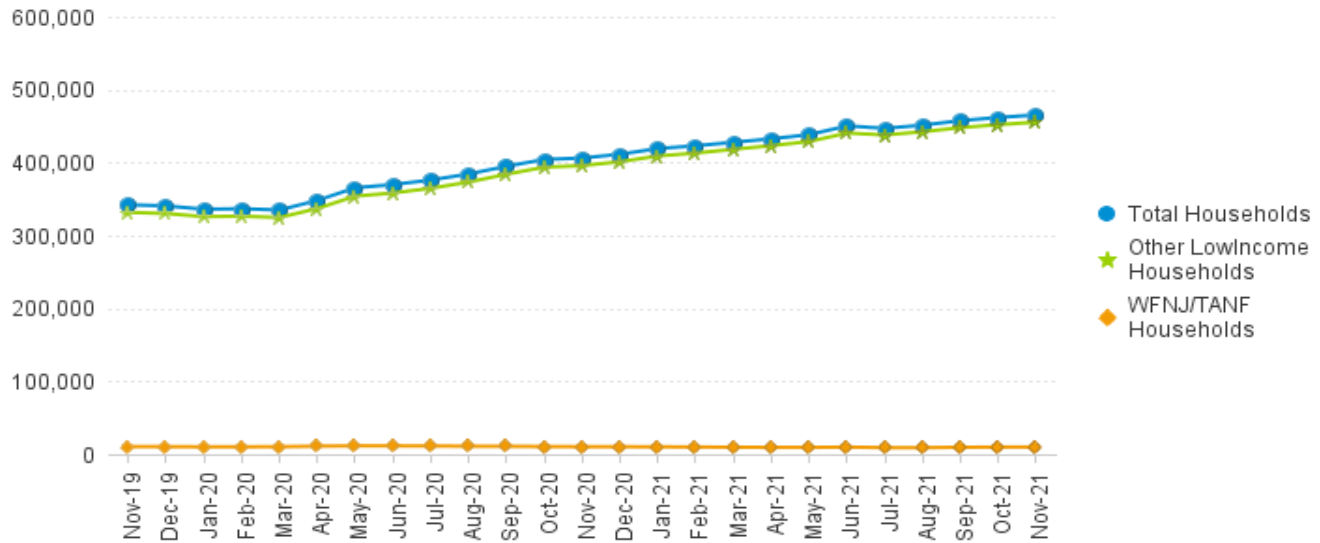
NJ SNAP

(FOOD STAMPS)

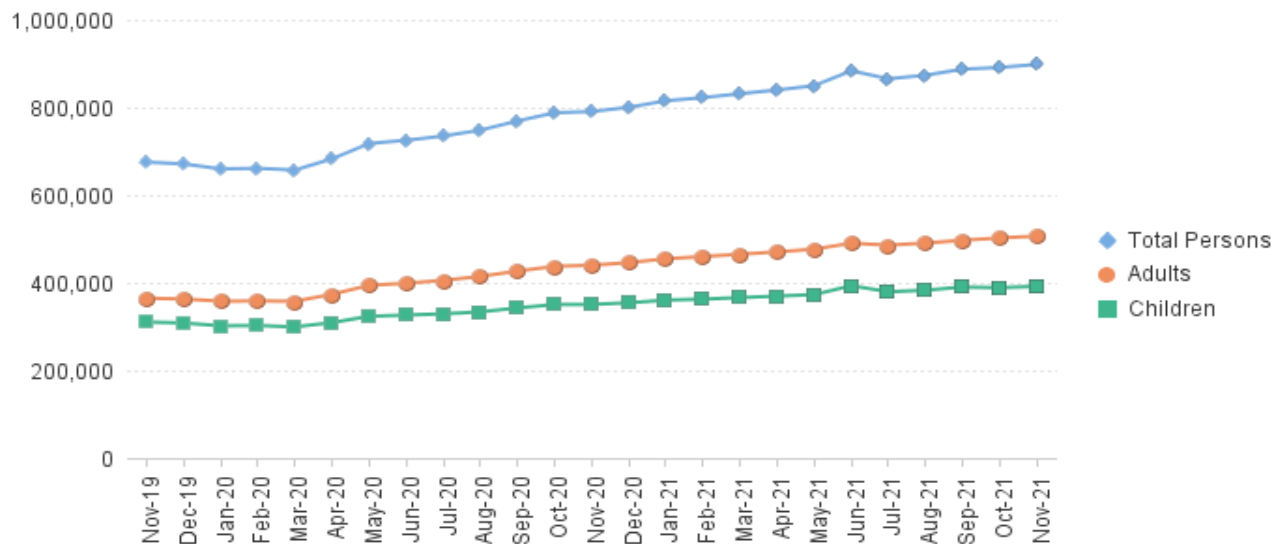
TRENDS FOR PARTICIPATING HOUSEHOLDS & PERSONS

NOVEMBER 2019 THROUGH NOVEMBER 2021 (STATEWIDE)

Statewide NJ SNAP Households: NOVEMBER 2019 Through NOVEMBER 2021



Statewide NJ SNAP Persons: NOVEMBER 2019 Through NOVEMBER 2021



Data is derived from NJ MMIS Shared Data Warehouse Issuance files.

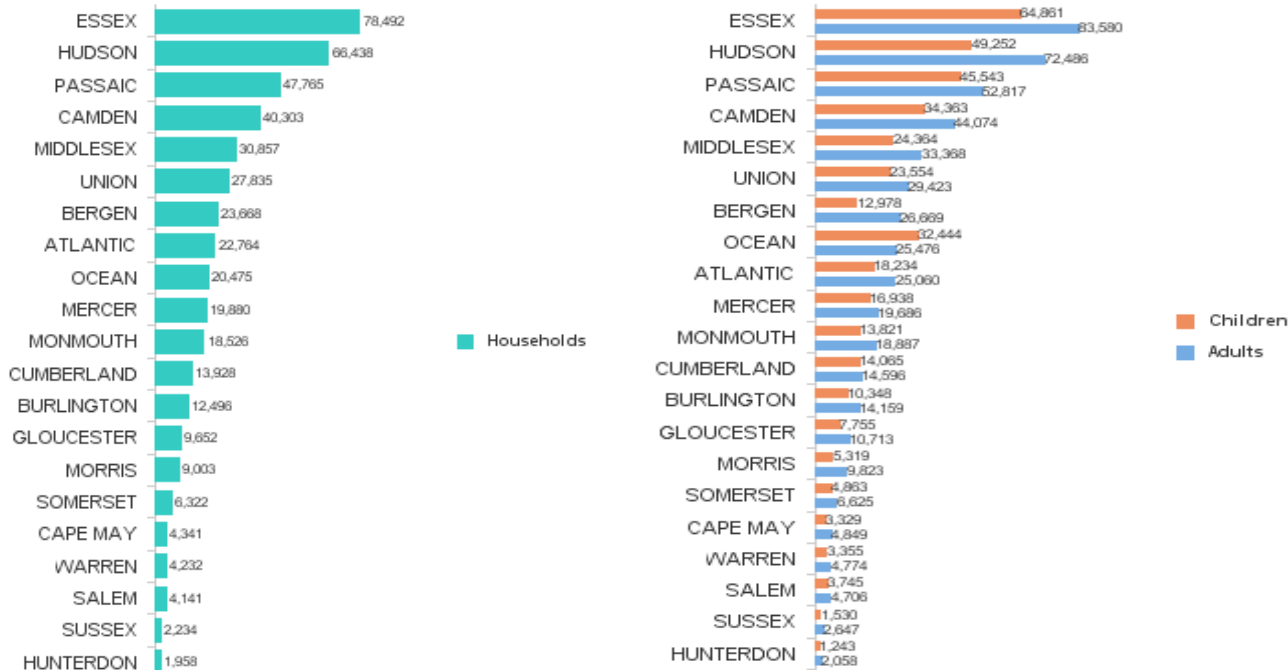
Effective July 2013 this data query source was converted to the SDW

TABLE 7 :
NJ SNAPNUMBER OF PARTICIPATING HOUSEHOLDS, PERSONS, ADULTS
AND CHILDREN BY COUNTY FOR NOVEMBER 2021

County	HOUSEHOLDS				PERSONS					
	WFNJ/ TANF	Other low income	TOTAL	% Chng (1 Yr)	Adults	Children	TOTAL	% Chng (1 Yr)	Age 60+	People with a disability
ATLANTIC	621	22,143	22,764	19.2% Δ	25,060	18,234	43,294	18.8% Δ	5,211	11,194
BERGEN	266	23,402	23,668	14.8%	26,669	12,978	39,647	16.5%	12,456	16,066
BURLINGTON	350	12,146	12,496	15.8%	14,159	10,348	24,507	16.5%	2,946	7,135
CAMDEN	1,309	38,994	40,303	12.2%	44,074	34,363	78,437	10.2%	8,183	20,140
CAPE MAY	96	4,245	4,341	7.8%	4,849	3,329	8,178	8.6%	997	2,337
CUMBERLAND	272	13,656	13,928	10.2%	14,596	14,065	28,661	9.8%	2,773	7,308
ESSEX	1,519	76,973	78,492	23.9% Δ	83,580	64,861	148,441	20.6% Δ	16,415	32,544
GLOUCESTER	219	9,433	9,652	9.1%	10,713	7,755	18,468	8.9%	2,292	6,190
HUDSON	1,448	64,990	66,438	14.5%	72,486	49,252	121,738	11.5%	19,618	29,876
HUNTERDON	49	1,909	1,958	11.8%	2,058	1,243	3,301	13.8%	573	1,075
MERCER	664	19,216	19,880	13.4%	19,686	16,938	36,624	13.2%	4,355	10,765
MIDDLESEX	585	30,272	30,857	11.0%	33,368	24,364	57,732	10.2%	12,170	17,684
MONMOUTH	184	18,342	18,526	12.9%	18,887	13,821	32,708	12.5%	5,634	10,304
MORRIS	100	8,903	9,003	15.1%	9,823	5,319	15,142	15.3%	4,194	5,558
OCEAN	322	20,153	20,475	16.6%	25,476	32,444	57,920	21.1% Δ	5,393	10,797
PASSAIC	1,071	46,694	47,765	6.8%	52,817	45,543	98,360	6.7%	13,611	21,082
SALEM	131	4,010	4,141	3.2% *	4,706	3,745	8,451	3.8% *	839	2,353
SOMERSET	178	6,144	6,322	13.6%	6,625	4,863	11,488	13.2%	2,148	3,596
SUSSEX	27	2,207	2,234	0.3% *	2,647	1,530	4,177	2.1% *	715	1,569
UNION	449	27,386	27,835	19.0% Δ	29,423	23,554	52,977	17.8%	7,742	12,981
WARREN	107	4,125	4,232	3.8% *	4,774	3,355	8,129	2.8% *	1,027	2,496
NJ TOTAL	9,967	455,343	465,310	14.5%	506,476	391,904	898,380	13.6%	129,292	233,050

Δ=higher caseload % change

*=lower caseload % change

Total NJ SNAP Recipients
NOVEMBER 2021 by County

Data is derived from NJ MMIS Shared Data Warehouse.

Effective July 2013 this data query source was converted to the SDW.

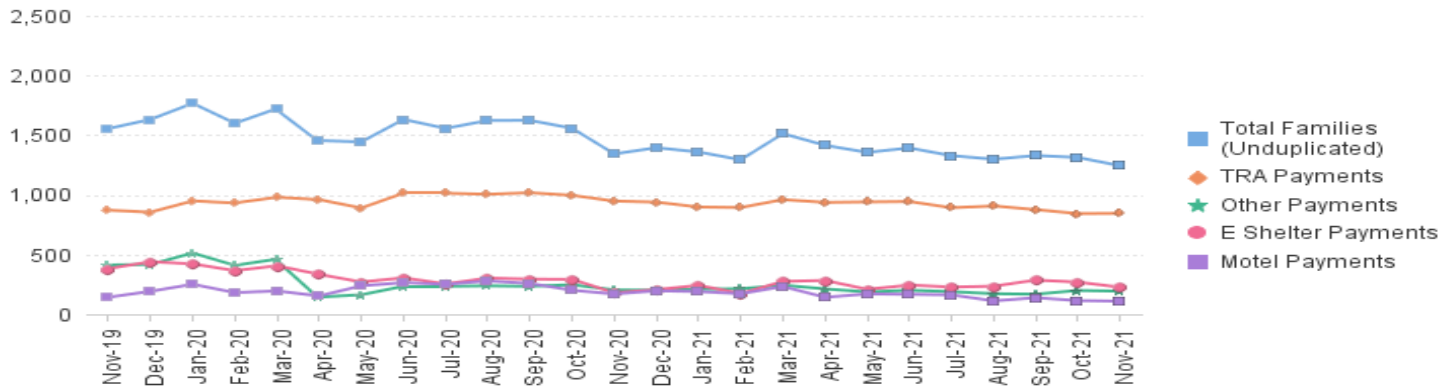
* Age 60+ and People with a disability columns are independent subsets of total persons. An individual might appear in both columns

**TABLE 8 :
EMERGENCY
ASSISTANCE
(STATEWIDE)**

**TOTAL NUMBER OF ELIGIBLE FAMILIES RECEIVING EMERGENCY ASSISTANCE PAYMENTS
NOVEMBER 2019 THROUGH NOVEMBER 2021 - STATEWIDE**

		Total WFNJ/EA Families (Undupl)	% CHNG (1 YR)	Temp Rent Asst. Payments (Undupl)	% CHNG (1 YR)	Motel Housing Payments (Undupl)	% CHNG (1 YR)	Shelter/Transitional Housing Payments (Undupl)	% CHNG (1 YR)	Other WFNJ/EA Payments (Undupl)	% CHNG (1 YR)
2019	NOV	1,555	-3.7%	871	2.2%	142	-11.3%	382	-16.2%	413	-1.0%
	DEC	1,632	0.7%	855	6.2%	192	-14.3%	440	-0.9%	417	-1.9%
2019 Average		1,578		826		164		427		437	
2020	JAN	1,767	15.7%	949	13.8%	251	59.9%	422	16.9%	513	2.6%
	FEB	1,600	15.1%	932	23.6%	181	20.7%	365	24.6%	409	-4.7%
	MAR	1,723	14.5%	980	16.3%	195	62.5%	406	-3.1%	462	19.4%
	APR	1,455	-5.9%	960	18.4%	153	-12.1%	334	-23.9%	144	-64.0%
	MAY	1,444	-9.1%	890	7.9%	238	63.0%	270	-41.0%	163	-63.5%
	JUN	1,632	5.9%	1,014	23.8%	265	61.6%	305	-28.6%	234	-43.3%
	JUL	1,557	3.0%	1,014	33.2%	251	88.7%	254	-43.3%	234	-42.2%
	AUG	1,623	-3.0%	1,005	18.0%	279	75.5%	303	-40.9%	238	-46.3%
	SEP	1,624	-1.0%	1,018	22.1%	258	41.0%	294	-32.1%	234	-47.9%
	OCT	1,558	-14.5%	996	16.1%	201	-17.6%	292	-42.5%	247	-54.8%
	NOV	1,343	-13.6%	948	8.8%	170	19.7%	180	-52.9%	204	-50.6%
	DEC	1,395	-14.5%	939	9.8%	196	2.1%	206	-53.2%	201	-51.8%
2020 Average		1,560		970		220		303		274	
2021	JAN	1,359	-23.1%	898	-5.4%	190	-24.3%	242	-42.7%	210	-59.1%
	FEB	1,294	-19.1%	894	-4.1%	172	-5.0%	174	-52.3%	213	-47.9%
	MAR	1,513	-12.2%	960	-2.0%	232	19.0%	275	-32.3%	244	-47.2%
	APR	1,415	-2.7%	937	-2.4%	142	-7.2%	283	-15.3%	212	47.2%
	MAY	1,356	-6.1%	941	5.7%	170	-28.6%	209	-22.6%	187	14.7%
	JUN	1,393	-14.6%	944	-6.9%	167	-37.0%	244	-20.0%	201	-14.1%
	JUL	1,328	-14.7%	892	-12.0%	162	-35.5%	228	-10.2%	189	-19.2%
	AUG	1,299	-20.0%	907	-9.8%	112	-59.9%	235	-22.4%	172	-27.7%
	SEP	1,329	-18.2%	876	-13.9%	138	-46.5%	286	-2.7%	168	-28.2%
	OCT	1,313	-15.7%	843	-15.4%	114	-43.3%	269	-7.9%	199	-19.4%
	NOV	1,244	-7.4%	845	-10.9%	109	-35.9%	226	25.6%	193	-5.4%
2021 Average to date		1,349		903		155		243		199	

**NJ STATEWIDE
Families Receiving Emergency Assistance
NOVEMBER 2019 THROUGH NOVEMBER 2021**



WFNJ/EA data is derived from NJ MMIS Shared Data Warehouse.

Effective July 2013 this data query source was converted to the SDW.

* Effective Feb '11 Transitional Housing Payments were removed from 'Other EA Payments' and added to 'Shelter Payments'.

TABLE 9 :
EMERGENCY ASSISTANCE (BY COUNTY)
TOTAL NUMBER OF ELIGIBLE FAMILIES RECEIVING EMERGENCY ASSISTANCE PAYMENTS BY COUNTY (UNDUPLICATED CASES) FOR NOVEMBER 2021

County	TOTAL WFNJ/EA Families (Undupl)	% CHNG From NOV 20		Temp Rent Asst. Payments (Undupl)	Motel Housing Payments (Undupl)	Shelter/Transitional Housing Payments (Undupl)	Other WFNJ/EA Payments (Undupl)	SSI Receipients Receiving EA **
ATLANTIC	45	-32.8%		37	1	2	9	48
BERGEN	45	0%		30	1	7	10	49
BURLINGTON	18	-45.5%		6	11	1	2	41
CAMDEN	28	-58.2%	*	18	4	3	5	27
CAPE MAY	15	-16.7%		9	6	0	0	10
CUMBERLAND	1	0%		0	0	1	0	0
ESSEX	148	57.4%	Δ	50	0	89	10	7
GLOUCESTER	7	-56.3%	*	4	0	1	2	3
HUDSON	200	12.4%		165	11	25	35	60
HUNTERDON	8	-20.0%		6	0	0	2	11
MERCER	99	4.2%		60	17	13	19	62
MIDDLESEX	130	-3.7%		85	23	12	37	58
MONMOUTH	25	316.7%	Δ	1	3	23	0	31
MORRIS	9	-10.0%		9	0	0	1	6
OCEAN	81	-26.4%		61	12	0	21	37
PASSAIC	230	-11.2%		187	8	30	16	19
SALEM	2	100.0%	Δ	1	1	0	0	0
SOMERSET	72	-13.3%		52	9	7	14	49
SUSSEX	0	0%		0	0	0	0	1
UNION	70	-17.6%		57	0	11	8	40
WARREN	11	-60.7%	*	7	2	1	2	4
NJ Total	1,244	-7.4%		845	109	226	193	563

Δ=higher caseload % change

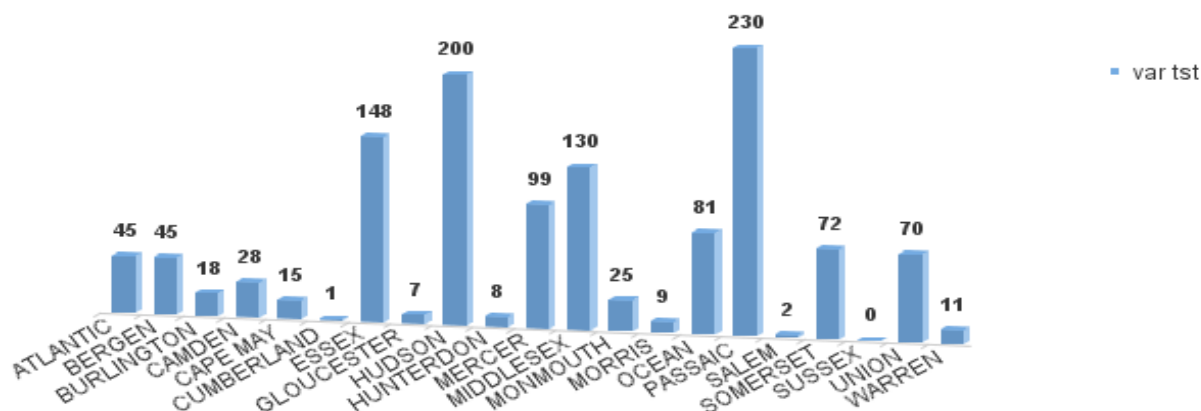
*=lower caseload % change

** SSI-EA includes pay codes 22 and 24, data is derived from NJ Division of Family Development FAMIS Report #FM430-03A

WFNJ/EA data is derived from NJ MMIS Shared Data Warehouse.

Effective July 2013 this data query source was converted to the SDW.

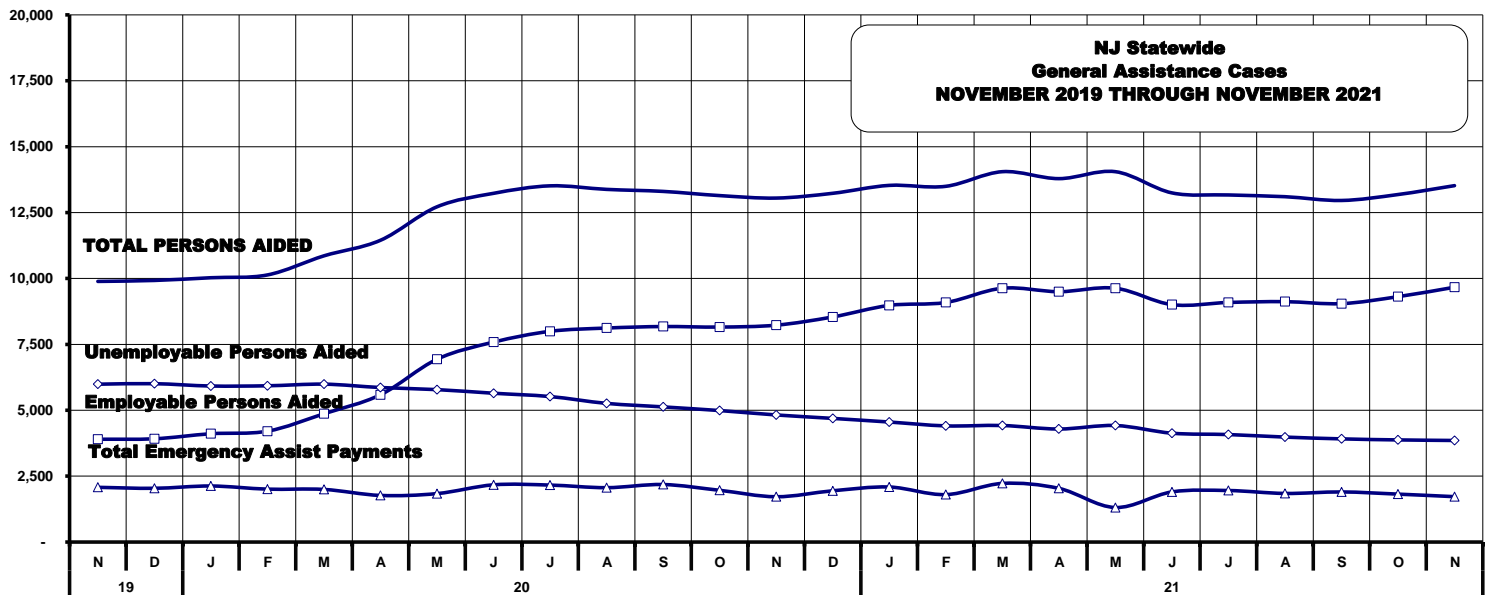
Number WFNJ Families Receiving EA by County
NOVEMBER 2021



**TABLE 10:
GENERAL
ASSISTANCE
PROGRAM**

**NUMBER OF EMPLOYABLE AND UNEMPLOYABLE RECIPIENTS
AND EMERGENCY ASSISTANCE PAYMENTS - STATEWIDE
NOVEMBER 2019 THROUGH NOVEMBER 2021**

	Total Cases						Emergency Assistance Cases			
	Employable	% Chng (1 Yr)	Unemployable	% Chng (1 Yr)	Total	% Chng (1 Yr)	Temporary Rental Assistance	Other GA-EA	Total	% Chng (1 Yr)
2019 NOV	3,900	-9.6%	5,988	-9.9%	9,888	-9.8%	878	1,198	2,076	8.1%
DEC	3,918	-4.7%	6,008	-8.3%	9,925	-6.9%	900	1,139	2,039	8.5%
2019 AVERAGE	4,124		6,182		10,306		898	1,223	2,121	
2020 JAN	4,109	-2.5%	5,919	-8.3%	10,028	-6.0%	910	1,216	2,126	11.7%
FEB	4,206	0.1%	5,928	-6.0%	10,134	-3.6%	875	1,132	2,007	5.7%
MAR	4,868	15.5%	5,990	-4.5%	10,858	3.5%	919	1,077	1,996	0.8%
APR	5,587	32.2%	5,862	-6.2%	11,449	9.3%	913	855	1,768	-18.3%
MAY	6,936	66.9%	5,783	-6.9%	12,719	22.7%	929	909	1,838	-35.4%
JUN	7,585	87.4%	5,645	-8.2%	13,230	29.8%	916	1,255	2,171	4.1%
JUL	7,994	97.4%	5,520	-9.2%	13,514	33.4%	905	1,256	2,161	8.4%
AUG	8,119	86.7%	5,261	-16.0%	13,380	26.1%	875	1,188	2,063	-1.5%
SEP	8,176	93.4%	5,127	-17.2%	13,303	27.7%	849	1,333	2,182	1.1%
OCT	8,156	104.9%	4,988	-17.1%	13,144	31.5%	855	1,107	1,962	-11.2%
NOV	8,228	111.0%	4,822	-19.5%	13,050	32.0%	835	884	1,719	-17.2%
DEC	8,540	118.0%	4,691	-21.9%	13,231	33.3%	833	1,111	1,944	-4.7%
2020 AVERAGE	6,875		5,461		12,337		885	1,110	1,995	
2021 JAN	8,978	118.5%	4,553	-23.1%	13,531	34.9%	848	1,240	2,088	-1.8%
FEB	9,089	116.1%	4,407	-25.7%	13,496	33.2%	809	991	1,800	-10.3%
MAR	9,630	97.8%	4,421	-26.2%	14,051	29.4%	819	1,405	2,224	11.4%
APR	9,499	70.0%	4,288	-26.9%	13,787	20.4%	832	1,204	2,036	15.2%
MAY	9,630	38.8%	4,421	-23.6%	14,051	10.5%	819	491	1,310	-28.7%
JUN	9,007	18.7%	4,130	-32.8%	13,247	0.1%	794	1,108	1,902	-12.4%
JUL	9,090	13.7%	4,078	-26.1%	13,168	-2.6%	833	1,121	1,954	-9.6%
AUG	9,120	12.3%	3,982	-24.3%	13,102	-2.1%	753	1,091	1,844	-10.6%
SEP	9,045	10.6%	3,914	-23.7%	12,959	-2.6%	787	1,114	1,901	-12.9%
OCT	9,309	14.1%	3,875	-22.3%	13,184	0.3%	757	1,061	1,818	-7.3%
NOV	9,668	17.5%	3,853	-20.1%	13,521	3.6%	711	1,011	1,722	0.2%
2021 AVERAGE TO DATE	9,279		4,175		13,463		797	1,076	1,873	



**TABLE 11: EMPLOYABLE AND UNEMPLOYABLE CASES
AND EMERGENCY ASSISTANCE CASES RECEIVING PAYMENTS BY COUNTY
NOVEMBER 2021**

	Total Cases						Emergency Assistance Cases			
	Employable	% Chng (1 Yr)	Unemployable	% Chng (1 Yr)	Total	% Chng (1 Yr)	Temporary Rental Assistance	Other GA-EA	Total	% Chng (1 Yr)
ATLANTIC	876	26.4%	187	-22.1%	1,063	13.9%	70	24	94	8.0%
BERGEN	319	-9.4%	173	-31.1%	492	-18.4%	79	13	92	-30.8%
BURLINGTON	352	-3.3%	207	-23.0%	559	-11.7%	10	99	109	58.0% Δ
CAMDEN	1,475	40.3%	461	-23.0%	1,936	17.3%	42	55	97	-43.9%
CAPE MAY	83	-7.8%	40	-25.9%	123	-14.6%	12	13	25	-60.3% *
CUMBERLAND	266	-5.7%	86	-34.4%	352	-14.8%	0	2	2	-50.0%
ESSEX	1,014	9.1%	295	-32.3%	1,309	-4.1%	18	193	211	163.8% Δ
GLOUCESTER	146	-23.6%	113	-29.8%	259	-26.4%	1	6	7	-73.1% *
HUDSON	1,906	27.7%	487	-13.8%	2,393	16.3%	104	72	176	33.3%
HUNTERDON	114	70.1%	40	-37.5%	154	17.6%	12	24	36	24.1%
MERCER	413	22.6%	264	-21.2%	677	0.7%	46	32	78	21.9%
MIDDLESEX	483	4.8%	322	17.1%	805	9.4%	81	87	168	-14.3%
MONMOUTH	225	35.5%	164	-6.3%	389	14.1%	1	77	78	50.0% Δ
MORRIS	139	9.4%	156	7.6%	295	8.5%	47	20	67	-11.8%
OCEAN	331	8.2%	216	-13.9%	547	-1.8%	58	55	113	-16.9%
PASSAIC	507	30.7%	315	-20.7%	822	4.7%	46	20	66	-22.4%
SALEM	127	-1.6%	31	-44.6%	158	-14.6%	0	2	2	0.0%
SOMERSET	159	9.7%	53	-25.4%	212	-1.9%	11	26	37	-51.3% *
SUSSEX	49	-12.5%	22	-43.6%	71	-25.3%	0	14	14	-33.3%
UNION	565	23.6%	144	-28.7%	709	7.6%	54	150	204	28.3%
WARREN	119	-17.4%	77	-27.4%	196	-21.6%	19	27	46	-20.7%
NJ TOTAL	9,668	17.5%	3,853	-20.1%	13,521	3.6%	711	1,011	1,722	0.2%

Δ= ↑ Caseload %

* = ↓ Caseload %

**TABLE 12:
OFFICE OF
CHILD SUPPORT
SERVICES**

**OFFICE OF CHILD SUPPORT SERVICES
QUARTERLY PERFORMANCE REPORT
STATE SUMMARY
TITLE IV-D SOURCE COLLECTION REPORT
Comparison of Quarter-4 (FFY 2020 vs. FFY 2021)**

COLLECTION SOURCE	TOTAL 7/1/2020 - 9/30/2020	% OF TOTAL COLLECTIONS	TOTAL 7/1/2021 - 9/30/2021	% OF TOTAL COLLECTIONS	DOLLAR CHANGE	% CHANGE
FEDERAL TAX	\$11,055,867	3.66%	\$13,351,212	4.53%	\$ 2,295,345	20.76%
STATE TAX	\$1,658,040	0.55%	\$3,627,130	1.23%	\$ 1,969,090	118.76%
UIB	\$35,999,185	11.91%	\$28,215,807	9.58%	\$ (7,783,378)	-21.62%
INC WITHHOLD	\$190,408,068	63.02%	\$182,792,079	62.04%	\$ (7,615,989)	-4.00%
FROM OTHER STATES	\$12,577,981	4.16%	\$11,450,421	3.89%	\$ (1,127,560)	-8.96%
ADMIN ENFORCEMENT	\$1,532,534	0.51%	\$4,099,830	0.01%	\$ 2,567,296	167.52%
OTHER	\$48,903,181	16.19%	\$51,080,910	17.34%	\$ 2,177,729	4.45%
TOTAL COLLECTIONS*	\$302,134,856	100%	\$294,617,389	100%	\$ (7,517,467)	-2.49%
DISBURSED COLLECTIONS**	\$266,129,047		\$257,920,003		\$ (8,209,044)	-3.08%

* Includes collections on both current support and arrears.

** Includes collections on both current support and arrears; also includes money sent to other states.

SOURCE: NJKiDS (Based on Federal Quarterly Report of Collections - OCSE-34A except Disbursed Collections)

Disbursed Collections obtained from Federal Data Report - OCSE-157, which is reported annually to Congress and used in the calculation of incentive dollars earned by each state.

**TABLE 13:
OFFICE OF
CHILD SUPPORT
SERVICES**

**OFFICE OF CHILD SUPPORT SERVICES
STATE SUMMARY
TITLE IV-D PATERNITY ESTABLISHMENT REPORT
Comparison of November (FFY 2021 vs. FFY 2022)**

County	NOVEMBER 2020			NOVEMBER 2021			Increase or Decrease (-) from FFY 2021 to FFY 2022
	Total Children Born Out of Wedlock*	Number of Paternities Established	Percent of Paternities Established	Total Children Born Out of Wedlock*	Number of Paternities Established	Percent of Paternities Established	
Atlantic	5,944	5,910	99.4%	5,509	5,503	99.9%	0.5%
Bergen	3,031	2,983	98.4%	2,739	2,679	97.8%	-0.6%
Burlington	4,635	4,526	97.6%	4,261	4,156	97.5%	-0.1%
Camden	14,996	14,599	97.4%	13,914	13,600	97.7%	0.4%
Cape May	1,176	1,160	98.6%	1,064	1,049	98.6%	0.0%
Cumberland	6,283	6,219	99.0%	5,914	5,857	99.0%	0.1%
Essex	23,493	22,298	94.9%	21,296	20,336	95.5%	0.6%
Gloucester	4,150	4,085	98.4%	3,788	3,736	98.6%	0.2%
Hudson	9,520	9,165	96.3%	8,464	8,228	97.2%	0.9%
Hunterdon	239	237	99.2%	202	200	99.0%	-0.2%
Mercer	6,593	6,383	96.8%	5,894	5,722	97.1%	0.3%
Middlesex	6,002	5,841	97.3%	5,536	5,395	97.5%	0.1%
Monmouth	4,733	4,590	97.0%	4,198	4,089	97.4%	0.4%
Morris	1,184	1,175	99.2%	1,063	1,050	98.8%	-0.5%
Ocean	4,573	4,452	97.4%	4,212	4,127	98.0%	0.6%
Passaic	9,542	9,214	96.6%	8,677	8,415	97.0%	0.4%
Salem	2,588	2,500	96.6%	2,430	2,335	96.1%	-0.5%
Somerset	1,308	1,272	97.2%	1,191	1,157	97.1%	-0.1%
Sussex	489	485	99.2%	420	424	101.0%	1.8%
Union	9,643	9,189	95.3%	9,129	8,709	95.4%	0.1%
Warren	863	859	99.5%	716	721	100.7%	1.2%
NJ TOTALS	120,985	117,142	96.8%	110,617	107,488	97.2%	0.3%

SOURCE: NJKIDS (Based on Federal Performance Measures - OCSE-157)

* Information on Out of Wedlock Births obtained from NJ Bureau of Vital Statistics

TABLE 14:
OFFICE OF
CHILD SUPPORT
SERVICES

OFFICE OF CHILD SUPPORT SERVICES
STATE SUMMARY
TITLE IV-D REPORT OF CASES WITH ORDERS
Comparison of November (FFY 2021 vs. FFY 2022)

County	NOVEMBER 2020			NOVEMBER 2021			Increase or Decrease (-) from FFY 2021 to FFY 2022
	Total Cases	Cases with Orders	% of Cases with Orders	Total Cases	Cases with Orders	% of Cases with Orders	
Atlantic	10,859	10,093	92.9%	10,330	9,563	92.6%	-0.4%
Bergen	11,018	10,780	97.8%	10,419	10,148	97.4%	-0.4%
Burlington	11,970	11,317	94.5%	11,362	10,767	94.8%	0.2%
Camden	26,675	25,110	94.1%	25,349	24,153	95.3%	1.1%
Cape May	2,787	2,613	93.8%	2,621	2,499	95.3%	1.6%
Cumberland	11,120	10,719	96.4%	10,665	10,244	96.1%	-0.3%
Essex	38,602	33,039	85.6%	35,338	31,080	88.0%	2.4%
Gloucester	9,640	9,320	96.7%	9,133	8,777	96.1%	-0.6%
Hudson	18,756	16,783	89.5%	17,345	15,723	90.6%	1.2%
Hunterdon	1,310	1,229	93.8%	1,233	1,160	94.1%	0.3%
Mercer	12,473	11,419	91.5%	11,507	10,532	91.5%	0.0%
Middlesex	16,044	15,079	94.0%	15,075	14,208	94.2%	0.3%
Monmouth	12,485	11,982	96.0%	11,448	10,940	95.6%	-0.4%
Morris	5,345	5,237	98.0%	5,089	4,925	96.8%	-1.2%
Ocean	13,492	13,023	96.5%	12,695	12,259	96.6%	0.0%
Passaic	18,164	15,763	86.8%	16,725	14,859	88.8%	2.1%
Salem	3,966	3,812	96.1%	3,692	3,540	95.9%	-0.2%
Somerset	4,227	4,005	94.7%	3,978	3,744	94.1%	-0.6%
Sussex	2,411	2,368	98.2%	2,250	2,219	98.6%	0.4%
Union	16,862	16,089	95.4%	16,225	15,419	95.0%	-0.4%
Warren	2,717	2,588	95.3%	2,392	2,282	95.4%	0.1%
NJ TOTALS	250,923	232,368	92.6%	234,871	219,041	93.3%	0.7%

SOURCE: NJKIDS (Based on Federal Performance Measures - OCSE-157)

TABLE 15:
OFFICE OF
CHILD SUPPORT
SERVICES

OFFICE OF CHILD SUPPORT SERVICES
STATE SUMMARY
TITLE IV-D COLLECTIONS ON CURRENT SUPPORT
Comparison of November (FFY 2021 vs. FFY 2022)

County	NOVEMBER 2020			NOVEMBER 2021			Increase or Decrease (-) from FFY 2021 to FFY 2022
	Total Current Support Due	Total Current Support Distributed	Total Collection Rate	Total Current Support Due	Total Current Support Distributed	Total Collection Rate	
Atlantic	\$3,432,890	\$2,363,339	68.8%	\$3,440,836	\$2,152,827	62.6%	-6.3%
Bergen	\$7,699,987	\$5,912,407	76.8%	\$7,468,189	\$5,577,659	74.7%	-2.1%
Burlington	\$5,181,762	\$3,696,932	71.3%	\$5,077,048	\$3,458,575	68.1%	-3.2%
Camden	\$7,221,345	\$4,628,544	64.1%	\$7,295,098	\$4,240,602	58.1%	-6.0%
Cape May	\$978,774	\$694,725	71.0%	\$973,080	\$642,248	66.0%	-5.0%
Cumberland	\$2,765,296	\$1,741,286	63.0%	\$2,794,206	\$1,594,903	57.1%	-5.9%
Essex	\$9,767,984	\$6,159,855	63.1%	\$9,626,545	\$5,571,466	57.9%	-5.2%
Gloucester	\$3,809,654	\$2,699,258	70.9%	\$3,752,310	\$2,516,708	67.1%	-3.8%
Hudson	\$6,577,413	\$4,629,904	70.4%	\$6,670,974	\$4,394,943	65.9%	-4.5%
Hunterdon	\$1,131,942	\$953,138	84.2%	\$1,077,408	\$881,063	81.8%	-2.4%
Mercer	\$3,722,523	\$2,460,083	66.1%	\$3,617,678	\$2,268,933	62.7%	-3.4%
Middlesex	\$6,990,048	\$5,083,860	72.7%	\$6,825,028	\$4,615,842	67.6%	-5.1%
Monmouth	\$6,604,666	\$4,930,319	74.6%	\$6,248,557	\$4,540,717	72.7%	-2.0%
Morris	\$4,035,636	\$3,082,816	76.4%	\$3,912,589	\$2,863,067	73.2%	-3.2%
Ocean	\$5,962,035	\$4,451,306	74.7%	\$5,861,452	\$4,136,203	70.6%	-4.1%
Passaic	\$5,925,714	\$4,037,323	68.1%	\$5,894,868	\$3,649,885	61.9%	-6.2%
Salem	\$1,010,379	\$643,342	63.7%	\$986,814	\$581,444	58.9%	-4.8%
Somerset	\$2,748,579	\$2,310,751	84.1%	\$2,611,599	\$2,098,175	80.3%	-3.7%
Sussex	\$1,605,617	\$1,272,595	79.3%	\$1,590,456	\$1,213,430	76.3%	-3.0%
Union	\$6,257,008	\$4,484,737	71.7%	\$6,265,910	\$4,249,038	67.8%	-3.9%
Warren	\$1,192,350	\$884,270	74.2%	\$1,110,013	\$807,064	72.7%	-1.5%
NJ TOTALS	\$94,621,603	\$67,120,790	70.9%	\$93,100,659	\$62,054,791	66.7%	-4.3%

SOURCE: NJKIDS (Based on Federal Performance Measures - OCSE-157)

**TABLE 16:
OFFICE OF
CHILD SUPPORT
SERVICES**

**OFFICE OF CHILD SUPPORT SERVICES
STATE SUMMARY
TITLE IV-D CASES ARREARS COLLECTION REPORT**

Comparison of November (FFY 2021 vs. FFY 2022)

County	NOVEMBER 2020			NOVEMBER 2021			Increase or Decrease (-) from FFY 2021 to FFY 2022
	Total Cases with Arrears	Total Amount Collected	Average Arrears Collection per Case	Total Cases with Arrears	Total Amount Collected	Average Arrears Collection per Case	
Atlantic	6,708	\$818,324	\$121.99	6,434	\$659,582	\$102.52	-\$19.48
Bergen	6,936	\$1,107,728	\$159.71	6,595	\$1,063,047	\$161.19	\$1.48
Burlington	7,520	\$1,094,016	\$145.48	7,170	\$940,760	\$131.21	-\$14.27
Camden	15,810	\$2,021,148	\$127.84	14,807	\$1,448,433	\$97.82	-\$30.02
Cape May	1,814	\$236,668	\$130.47	1,676	\$203,408	\$121.37	-\$9.10
Cumberland	6,927	\$738,496	\$106.61	6,519	\$645,409	\$99.00	-\$7.61
Essex	20,860	\$3,236,297	\$155.14	19,405	\$2,209,724	\$113.87	-\$41.27
Gloucester	6,309	\$863,028	\$136.79	5,815	\$645,641	\$111.03	-\$25.76
Hudson	11,229	\$1,472,187	\$131.11	10,689	\$1,161,854	\$108.70	-\$22.41
Hunterdon	742	\$183,634	\$247.49	741	\$172,381	\$232.63	-\$14.85
Mercer	7,792	\$1,000,123	\$128.35	7,126	\$871,208	\$122.26	-\$6.09
Middlesex	9,882	\$1,371,924	\$138.83	9,408	\$1,104,778	\$117.43	-\$21.40
Monmouth	7,842	\$1,249,254	\$159.30	7,125	\$1,203,472	\$168.91	\$9.61
Morris	3,509	\$564,629	\$160.91	3,335	\$600,873	\$180.17	\$19.26
Ocean	8,424	\$1,256,225	\$149.12	7,762	\$998,624	\$128.66	-\$20.47
Passaic	10,752	\$1,511,036	\$140.54	10,018	\$1,141,688	\$113.96	-\$26.57
Salem	2,355	\$269,255	\$114.33	2,192	\$202,991	\$92.61	-\$21.73
Somerset	2,629	\$493,569	\$187.74	2,454	\$396,650	\$161.63	-\$26.11
Sussex	1,565	\$249,388	\$159.35	1,458	\$263,456	\$180.70	\$21.34
Union	10,481	\$1,585,014	\$151.23	10,003	\$1,457,665	\$145.72	-\$5.50
Warren	1,633	\$216,286	\$132.45	1,520	\$188,058	\$123.72	-\$8.72
NJ TOTALS	151,719	\$21,538,229	\$141.96	142,252	\$17,579,702	\$123.58	-\$18.38

SOURCE: OCSE-157 Child Support Enforcement Annual Data Report

Table 17**WORK FIRST NEW JERSEY STATISTICAL SUMMARY****WFNJ****NOVEMBER 2021**

COUNTY	EMPLOYMENT DIRECTED ACTIVITIES			EMPLOYED OPEN (WFNJ RECIPIENT)	SUPPORT SERVICES ON ACTIVE CASE		CLOSED FOR EMPLOYMENT THIS MONTH	POST ASSISTANCE CHILD CARE
	CWEP	ALL OTHER TRAINING	JOB SEARCH		CHILD CARE	TRAINING REL. EXPENSES		
ATLANTIC	0	13	0	30	4	44	3	26
BERGEN	0	0	1	8	12	0	2	5
BURLINGTON	0	12	0	1	2	0	2	14
CAMDEN	16	119	0	24	33	1	13	16
CAPE MAY	0	1	0	1	1	0	0	5
CUMBERLAND	0	11	0	8	0	0	3	1
ESSEX	4	128	0	48	43	28	9	46
GLOUCESTER	0	0	0	6	7	1	1	3
HUDSON	13	218	19	43	67	14	19	22
HUNTERDON	0	0	0	0	2	0	0	0
MERCER	0	53	0	26	78	18	10	27
MIDDLESEX	0	44	1	19	3	0	5	25
MONMOUTH	0	9	3	15	12	3	1	18
MORRIS	0	7	0	2	1	0	1	4
OCEAN	0	23	0	7	9	1	2	12
PASSAIC	0	18	1	14	31	4	6	4
SALEM	0	12	0	2	5	0	0	0
SOMERSET	0	15	1	7	18	5	1	4
SUSSEX	0	0	0	0	11	0	1	2
UNION	0	32	0	5	4	2	6	2
WARREN	0	13	0	2	0	0	2	0
STATE TOTAL	33	728	26	268	343	121	87	236

Data is derived from NJ Division of Family Development's FAMIS Reports RM064-01 & RM703-51, AdHoc Reports 5549 & 5598 and SDW Report WR00022WZ_CC

**DIVISION OF FAMILY DEVELOPMENT CURRENT PROGRAM STATISTICS
NOVEMBER 2021**

ACRONYMS

EMERGENCY ASSISTANCE (EA) - Payments to those eligible for WFNJ/TANF or WFNJ/GA, authorized during the 30 consecutive days immediately following the emergency (defined as a substantial loss of shelter, food, clothing, or household furnishings by fire, flood or other similar disaster) or if eligible individual or family is in an imminent or actual state of homelessness.

NJ SNAP - Formerly the Food Stamp Program, now known as NJ SNAP (NJ Supplemental Nutrition Assistance Program) authorized by Congress as a nutritional supplement program to provide low income households with more food of greater variety and better nutrition. Program eligibility is based on household income, resources, and expenses for medical, shelter, and dependent care. CWA staff refers certain recipients to the New Jersey Department of Labor for participation in the Food Stamp Employment

FAMIS: Family Assistance Management Information System

GAAS: General Assistance Automated System

NJKIDS: New Jersey Kids Deserve Support (Child Support Information Management System)

NJ MMIS SHARED DATA WAREHOUSE: The Shared Data Warehouse (SDW) is the repository for New Jersey's DFD and Medicaid data. Since 2003, OptumInsight has administered the SDW and provided access to the data through a reporting tool known as Business Objects.

OMEGA: Online Management of Economic Goal Achievement

SSI-EA: Supplemental Security Income-Emergency Assistance

WFNJ: Work First New Jersey - Fully implemented July 1, 1997, this is New Jersey's welfare reform program which responds to the requirements of the Federal Personal Responsibility and Work Opportunity Reconciliation Act (**PRWORA**) of 1996. PRWORA established Temporary Assistance for Needy Families (**TANF**) as the replacement for AFDC cash assistance. WFNJ includes two segments, **WFNJ/TANF** for families with children, and **WFNJ/GA** (General Assistance) for single adults and couples without dependent children. WFNJ emphasizes achieving self-sufficiency and limits lifetime receipt of financial assistance to a total of five years.

**DIVISION OF FAMILY DEVELOPMENT CURRENT PROGRAM STATISTICS
NOVEMBER 2021**

EXPLANATORY NOTES

The Department of Human Services Division of Family Development provides basic income and an opportunity to achieve self-sufficiency for individuals and families served by the Division's programs. The Division provides leadership, direction and supervision to those public agencies responsible for administering those programs and plans for and develops policies to promote self-sufficiency.

WFNJ STATISTICAL SUMMARY (TABLE 17)

Employment Directed Activities (EDA) - From Activities Summary Report (OMEGA report # RM064). Unduplicated count of persons participating in Community Work Experience Program (CWEP), All Other Training, or Job Search.

Number of Persons Employed This Month, Still Receiving TANF - Individuals with open "empl" activity on OMEGA. Ad hoc report.

Participants Receiving Child Care Services - From Issuance Disbursement Summary (OMEGA report # RM703). Total number of active participants who show receipt of Child Care.

Number of Persons Closed on FAMIS Due to Employment - From FAMIS report #5549-RM-2

Post TANF and Receiving Child Care - Persons no longer in receipt of TANF but still receiving child care. From Share Data Warehouse Child Care case count based on Child Care payments (SDW report WR00022WZ_CC).