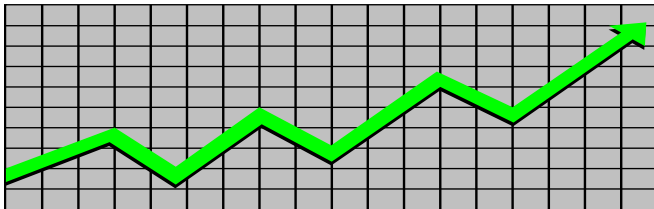


**State of New Jersey**  
**Department of Human Services**  
**Division of Family Development**

---

# **CURRENT PROGRAM STATISTICS**



---

**November 2022**  
**Natasha Johnson, Assistant Commissioner**

## **TABLE OF CONTENTS**

### **HIGHLIGHTS:**

<b>WFNJ/TANF</b> .....	<b>ii</b>
<b>NJ SNAP</b> .....	<b>ii</b>
<b>EMERGENCY ASSISTANCE</b> .....	<b>ii</b>
<b>GENERAL ASSISTANCE</b> .....	<b>iii</b>
GA Emergency Assistance.....	iii
GA Program.....	iii
<b>CHILD SUPPORT SERVICES</b> .....	<b>iii</b>
<b>WORK FIRST NEW JERSEY (WFNJ)</b> .....	<b>iii</b>
<b>STATISTICS- BY STATE &amp; COUNTY</b> .....	<b>1</b>
Table 1: WFNJ/TANF Families & Persons (NJ Statewide) November 2020 to 2022.....	1
Table 2: WFNJ/TANF Families (by County)- November 2022.....	2
Table 2B: WFNJ/TANF Persons, Adults, & Children (by County)- November 2022.....	3
Table 3: TANF Work Participation Rates Over 12 Month Period (by County)- November 2022.....	4
Table 4: TANF Work Participation Rates Over 12 Month Period (NJ Statewide)- November 2022..	5
Table 5: NJ SNAP Households/Persons (NJ Statewide) November 2020 to 2022.....	6
Table 6: NJ SNAP Recipient Trends (NJ Statewide) November 2020 to 2022.....	7
Table 7: NJ SNAP Households/Persons (by County)- November 2022.....	8
Table 8: Emergency Assistance Program (NJ Statewide) November 2020 to 2022.....	9
Table 9: Emergency Assistance Program (by County)- November 2022.....	10
Table 10: General Assistance Program (NJ Statewide) November 2020 to 2022.....	11
Table 11: General Assistance Program (by County)- November 2022.....	12
Table 12: Child Support Services Distributions (NJ Statewide) FFY 2022.....	13
Table 13: Child Support Services Paternities Established- November 2022.....	14
Table 14: Child Support Services Cases With Orders- November 2022.....	15
Table 15: Child Support Services Collections On Current Support- November 2022.....	16
Table 16: Child Support Services Cases With Payments On Arrears- November 2022.....	17
Table 17: WFNJ Statistical Summary- November 2022.....	18
<b>ACRONYMS</b> .....	<b>19</b>
<b>EXPLANATORY NOTES</b> .....	<b>20</b>
WFNJ Statistical Summary (Table 17).....	20

## **DIVISION OF FAMILY DEVELOPMENT CURRENT PROGRAM STATISTICS**

### **NOVEMBER 2022**

---

Each month the Division of Family Development publishes its program statistics for: WFNJ/TANF, NJ SNAP, Emergency Assistance, General Assistance, and Child Support Services. When possible, information is provided separately for children and adults. Many tables also provide trend data with information broken down by county for readers to consider. This report is compiled and prepared by The Bureau of Research & Reporting.

---

#### **WFNJ/TANF**

- As of the end of November, the TANF caseload had increased by 1,718 cases, from 9,359 in November 2021 to 11,077 in November 2022; an increase of 18.4%.
- The counties with caseloads that increased the most since November 2021 were Sussex (72.2%), Bergen (58.1%), and Union (39.1%).
- The counties with caseloads that decreased the most since November 2021 was Warren (-8%).
- Of the WFNJ/TANF cases, 2,573 or 23.2% were child-only in November 2022.
- The counties with the most child-only cases were Camden (459), Hudson (290), and Passaic (270).
- Hudson (4,618), Camden (4,064), and Essex (3,859) counties had the greatest number of persons receiving TANF in November 2022.

#### **NJ SNAP (Formerly FOOD STAMPS)**

- In November 2022, there were 397,363 households receiving NJ SNAP benefits. The number of NJ SNAP households decreased by 67,947 or -14.6%, since November 2021.
- There were 768,584 persons receiving NJ SNAP benefits as of November 2022; a decrease of 129,796 or -14.4% since November 2021.
- The counties having the highest SNAP caseload increase since November 2021 was Hunterdon (4%).
- The counties having the highest SNAP caseload decrease since November 2021 were Union (-27.6%), Hudson (-25.7%), and Passaic (-25%).

#### **EMERGENCY ASSISTANCE**

- There were 1,072 TANF families receiving Emergency Assistance (EA) in November 2022; a decrease of 172 or -13.8% since November 2021.
- In November 2022, EA payments were made for 523 SSI recipients.

## **DIVISION OF FAMILY DEVELOPMENT CURRENT PROGRAM STATISTICS NOVEMBER 2022**

- There were 1,642 GA cases with Emergency Assistance payments in November 2022; a decrease of 80 or -4.6% since November 2021.
- The counties that showed the highest percent increase in Emergency Assistance payments were Cumberland (450%), Cape May (120%), and Gloucester (114.3%).
- The counties that showed the highest percent decrease in Emergency Assistance payments were Sussex (-85.7%), Passaic (-59.1%), and Hudson (-34.7%).

### **GENERAL ASSISTANCE**

- The total numbers of cases receiving GA has decreased from 13,521 to 10,639 since November 2021; a decrease of -21.3%.
- There were 7,313 Employable GA and 3,326 Unemployable GA cases in November 2022.
- The counties that showed a percent increase for GA cases were Cape May (37.4%), Gloucester (17.8%), and Somerset (15.6%) since November 2021.
- The counties that showed the highest percent decrease for GA cases since November 2021 were Hudson (-54%), Passaic (-45.6%), and Sussex (-40.8%).
- In November 2022, GA cases showed a -4.33% decrease since October 2022.

### **CHILD SUPPORT SERVICES (QUARTERLY REPORT)**

- The total collection for the Child Support Services Program was about \$265 million from July 2022 to September 2022; a decrease of -10.12% over the same period from FFY 2021.
- Total distributions decreased -11.1% from September 2021.

### **WORK FIRST NEW JERSEY (WFNJ)**

- During the report month of November 2022, there were 553 families in which at least one member was employed and an additional 126 families whose WFNJ assistance cases were closed due to employment - related earnings.
- The three counties with the greatest number of employed active WFNJ recipients were: Hudson (110), Essex (87), and Camden (64).
- There were 206 former TANF cases receiving post-TANF support in the form of child care assistance.

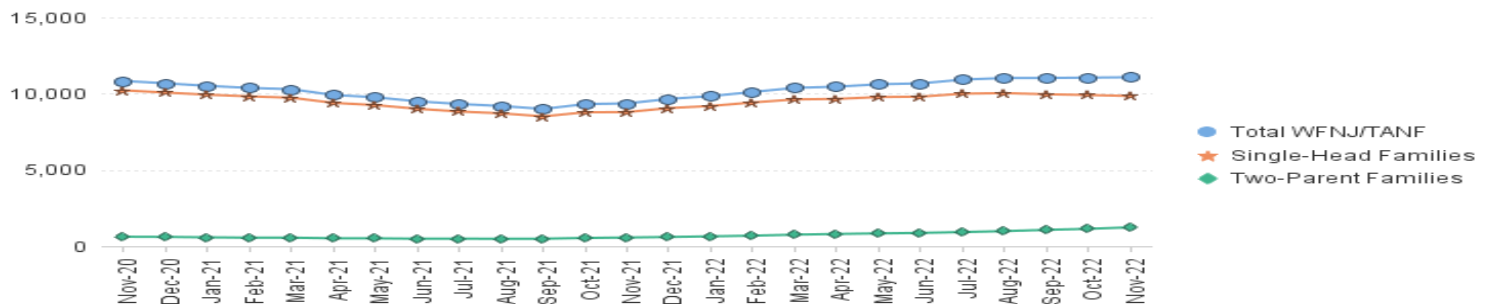
**TABLE 1:**  
**WFNJ/ TANF**  
**PROGRAM**

**STATEWIDE NUMBER OF APPLICATIONS AND TERMINATIONS DURING NOVEMBER 2022**  
**NUMBER OF ELIGIBLE FAMILIES & PERSONS RECEIVING WFNJ/TANF FOR NOVEMBER 2022**

**NOVEMBER 2020 THROUGH NOVEMBER 2022**

		Cases Added	Cases Closed	Child-Only Cases ‡	Total Single-Head Families	2-Parent Families	Total WFNJ/TANF Families	%CHNG (1 Yr.)	Total Persons	%CHNG (1 Yr.)	Adults	Children
2020	NOV	419	767	3,470	10,218	617	10,835	-1.1%	27,738	0.3%	7,982	19,756
	DEC	434	595	3,410	10,071	607	10,678	-2.5%	27,371	-1.4%	7,875	19,496
2020	<b>Average</b>	<b>682</b>	<b>724</b>	<b>3,614</b>	<b>10,607</b>	<b>698</b>	<b>11,306</b>		<b>28,973</b>		<b>8,390</b>	<b>20,583</b>
2021	JAN	400	585	3,379	9,932	580	10,512	-1.7%	26,960	-0.6%	7,713	19,247
	FEB	378	504	3,347	9,818	559	10,377	-4.1%	26,520	-3.6%	7,589	18,931
	MAR	397	481	3,311	9,735	557	10,292	-3.9%	26,335	-3.2%	7,538	18,797
	APR	298	704	3,224	9,395	518	9,913	-11.8%	25,276	-12.1%	7,207	18,069
	MAY	264	510	3,209	9,250	513	9,763	-18.0%	24,858	-19.1%	7,067	17,791
	JUN	373	636	3,141	9,008	489	9,497	-21.8%	24,146	-23.0%	6,845	17,301
	JUL	391	590	3,068	8,829	493	9,322	-23.0%	23,785	-23.8%	6,747	17,038
	AUG	415	544	3,029	8,709	482	9,191	-22.4%	23,445	-23.0%	6,644	16,801
	SEP	388	588	2,945	8,507	489	8,996	-22.0%	23,009	-22.1%	6,540	16,469
	OCT	833	564	2,921	8,779	538	9,317	-16.7%	23,888	-16.6%	6,934	16,954
	NOV	656	614	2,816	8,791	568	9,359	-13.6%	24,282	-12.5%	7,111	17,171
	DEC	702	432	2,824	9,054	601	9,655	-9.6%	25,177	-8.0%	7,432	17,745
2021	<b>Average</b>	<b>458</b>	<b>563</b>	<b>3,101</b>	<b>9,151</b>	<b>532</b>	<b>9,683</b>		<b>24,807</b>		<b>7,114</b>	<b>17,693</b>
2022	JAN	667	484	2,796	9,193	645	9,838	-6.4%	25,789	-4.3%	7,687	18,102
	FEB	655	414	2,794	9,424	689	10,113	-2.5%	26,638	0.4%	8,008	18,630
	MAR	715	512	2,804	9,623	756	10,379	0.8%	27,433	4.2%	8,331	19,102
	APR	644	622	2,743	9,656	802	10,458	5.5%	27,749	9.8%	8,517	19,232
	MAY	632	475	2,723	9,777	838	10,615	8.7%	28,183	13.4%	8,730	19,453
	JUN	622	599	2,718	9,802	869	10,671	12.4%	28,287	17.1%	8,822	19,465
	JUL	679	518	2,715	9,998	925	10,923	17.2%	29,043	22.1%	9,133	19,910
	AUG	713	609	2,687	10,037	987	11,024	19.9%	29,453	25.6%	9,324	20,129
	SEP	755	808	2,651	9,959	1,070	11,029	22.6%	29,486	28.1%	9,448	20,038
	OCT	753	821	2,626	9,910	1,139	11,049	18.6%	29,606	23.9%	9,562	20,044
	NOV	801	822	2,573	9,843	1,234	11,077	18.4%	29,858	23.0%	9,738	20,120
2022	<b>Average To Date</b>	<b>694</b>	<b>608</b>	<b>2,712</b>	<b>9,747</b>	<b>905</b>	<b>10,652</b>		<b>28,320</b>		<b>8,845</b>	<b>19,475</b>

**NJ STATEWIDE**  
**Eligible Families Receiving WFNJ/TANF**  
**NOVEMBER 2020 THROUGH NOVEMBER 2022**



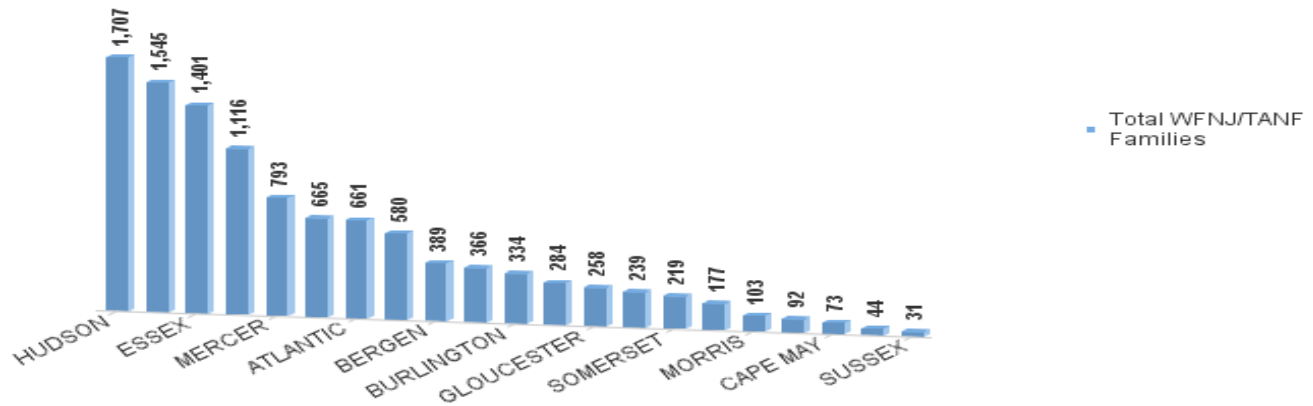
Data is derived from NJ MMIS Shared Data Warehouse issuance files.  
Effective July 2013 this data query source was converted to the SDW

‡ Child-only cases are defined as families in which no eligible adult receives TANF program benefits, yet the family continues to be headed by at least one of the biological parents, or grandparents, or other appropriate adult.

TABLE 2:

WFNJ/TANF  
PROGRAMNUMBER OF APPLICATIONS AND TERMINATIONS BY COUNTY DURING NOVEMBER 2022  
NUMBER OF ELIGIBLE FAMILIES RECEIVING WFNJ/TANF FOR NOVEMBER 2022

County	Cases Added	Cases Closed **	Child-	1-Adult Cases	Total	2-Parent Families	Total	%CHNG (3 Mon)	%CHNG (1 Yr.)
			Only Cases ‡		Single-Head Families		WFNJ/TANF Families		
ATLANTIC	42	37	207	403	610	51	661	-2.4%	6.8%
BERGEN	41	27	59	258	317	72	389	10.5%	58.1% Δ
BURLINGTON	35	40	96	217	313	21	334	-4.8%	7.4%
CAMDEN	59	112	459	973	1,432	113	1,545	-1.8%	15.0%
CAPE MAY	5	8	22	44	66	7	73	0.0%	0.0% *
CUMBERLAND	30	28	88	169	257	27	284	5.2%	5.2%
ESSEX	144	76	268	907	1,175	226	1,401	3.9%	23.3%
GLOUCESTER	32	48	71	172	243	15	258	-5.8%	8.9%
HUDSON	119	141	290	1,207	1,497	210	1,707	-1.8%	19.9%
HUNTERDON	1	2	4	34	38	6	44	2.3%	0.0% *
MERCER	53	72	200	537	737	56	793	-0.9%	28.1%
MIDDLESEX	38	61	170	356	526	54	580	-3.7%	5.8%
MONMOUTH	23	15	55	165	220	19	239	4.8%	35.0%
MORRIS	8	12	18	67	85	18	103	8.4%	22.6%
OCEAN	28	28	70	254	324	42	366	1.9%	21.6%
PASSAIC	40	35	270	777	1,047	69	1,116	0.4%	9.3%
SALEM	17	13	36	122	158	19	177	4.7%	38.3%
SOMERSET	18	13	42	156	198	21	219	4.3%	20.3%
SUSSEX	6	3	5	18	23	8	31	14.8%	72.2% Δ
UNION	52	38	122	372	494	171	665	4.6%	39.1% Δ
WARREN	10	13	21	62	83	9	92	1.1%	-8.0% *
<b>NJ Total</b>	<b>801</b>	<b>822</b>	<b>2,573</b>	<b>7,270</b>	<b>9,843</b>	<b>1,234</b>	<b>11,077</b>	<b>0.4%</b>	<b>18.4%</b>

Total WFNJ/TANF Families  
NOVEMBER 2022  
By County

Data is derived from NJ MMIS Shared Data Warehouse Issuance files.  
Effective July 2013 this data query source was converted to the SDW

‡ Child-only cases are defined as families in which no eligible adult receives TANF program benefits, yet the family continues to be headed by at least one of the biological parents, or grandparents, or other appropriate adult

\*\* 'Cases closed' include cases that received a benefit in the prior month, but did not receive any TANF benefit for the report month.

Δ=higher caseload % change

\*=lower caseload % change

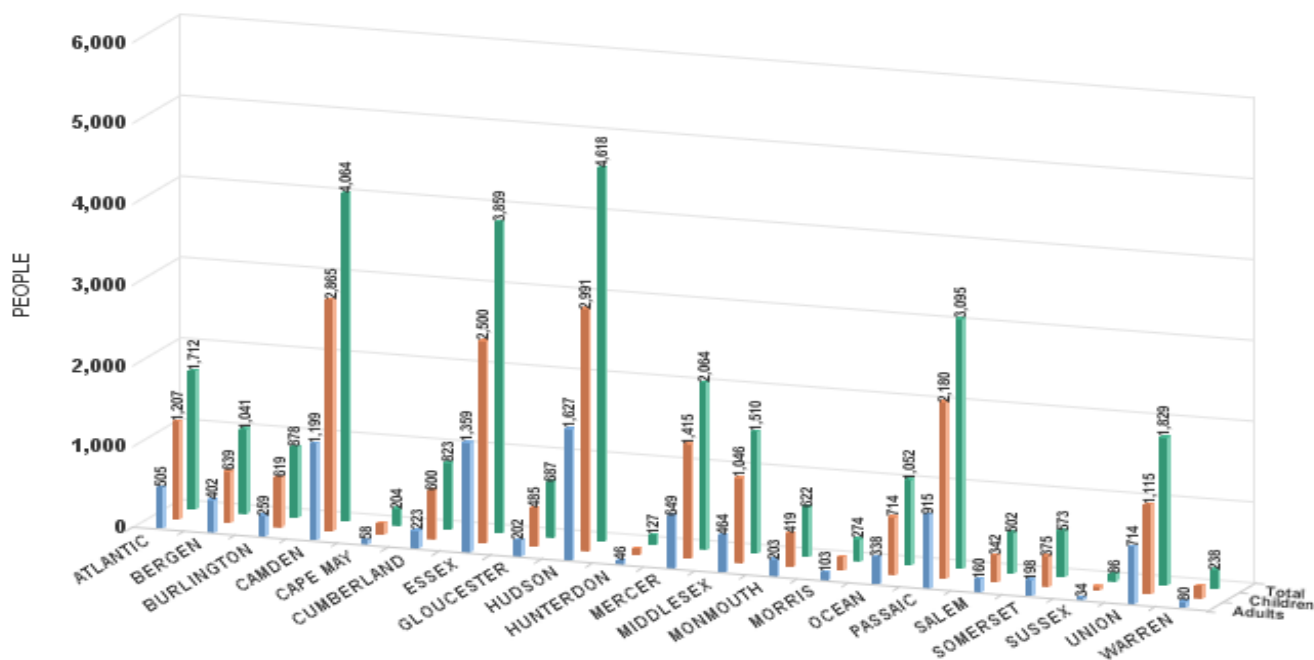
TABLE 2B :

WFNJ/TANF  
PROGRAMNUMBER OF PARTICIPATING PERSONS, ADULTS, AND CHILDREN  
BY COUNTY FOR NOVEMBER 2022PERSONS

County	Adults	Children	Child/Adult Ratio	Total Persons	% Chng (1 Yr)	Persons Per Case
ATLANTIC	505	1,207	2.39	1,712	10.5%	2.59
BERGEN	402	639	1.59	1,041	72.9% $\Delta$	2.68
BURLINGTON	259	619	2.39	878	11.6%	2.63
CAMDEN	1,199	2,865	2.39	4,064	18.9%	2.63
CAPE MAY	58	146	2.52	204	9.1%	2.79
CUMBERLAND	223	600	2.69	823	7.6% *	2.90
ESSEX	1,359	2,500	1.84	3,859	29.4%	2.75
GLOUCESTER	202	485	2.40	687	14.9%	2.66
HUDSON	1,627	2,991	1.84	4,618	26.3%	2.71
HUNTERDON	46	81	1.76	127	4.1% *	2.89
MERCER	649	1,415	2.18	2,064	28.8%	2.60
MIDDLESEX	464	1,046	2.25	1,510	7.7%	2.60
MONMOUTH	203	419	2.06	622	49.5% $\Delta$	2.60
MORRIS	103	171	1.66	274	27.4%	2.66
OCEAN	338	714	2.11	1,052	28.4%	2.87
PASSAIC	915	2,180	2.38	3,095	11.8%	2.77
SALEM	160	342	2.14	502	47.2%	2.84
SOMERSET	198	375	1.89	573	19.6%	2.62
SUSSEX	34	52	1.53	86	75.5% $\Delta$	2.77
UNION	714	1,115	1.56	1,829	43.9%	2.75
WARREN	80	158	1.98	238	-5.6% *	2.59
<b>NJ Total</b>	<b>9,738</b>	<b>20,120</b>	<b>2.07</b>	<b>29,858</b>	<b>23.0%</b>	<b>2.70</b>

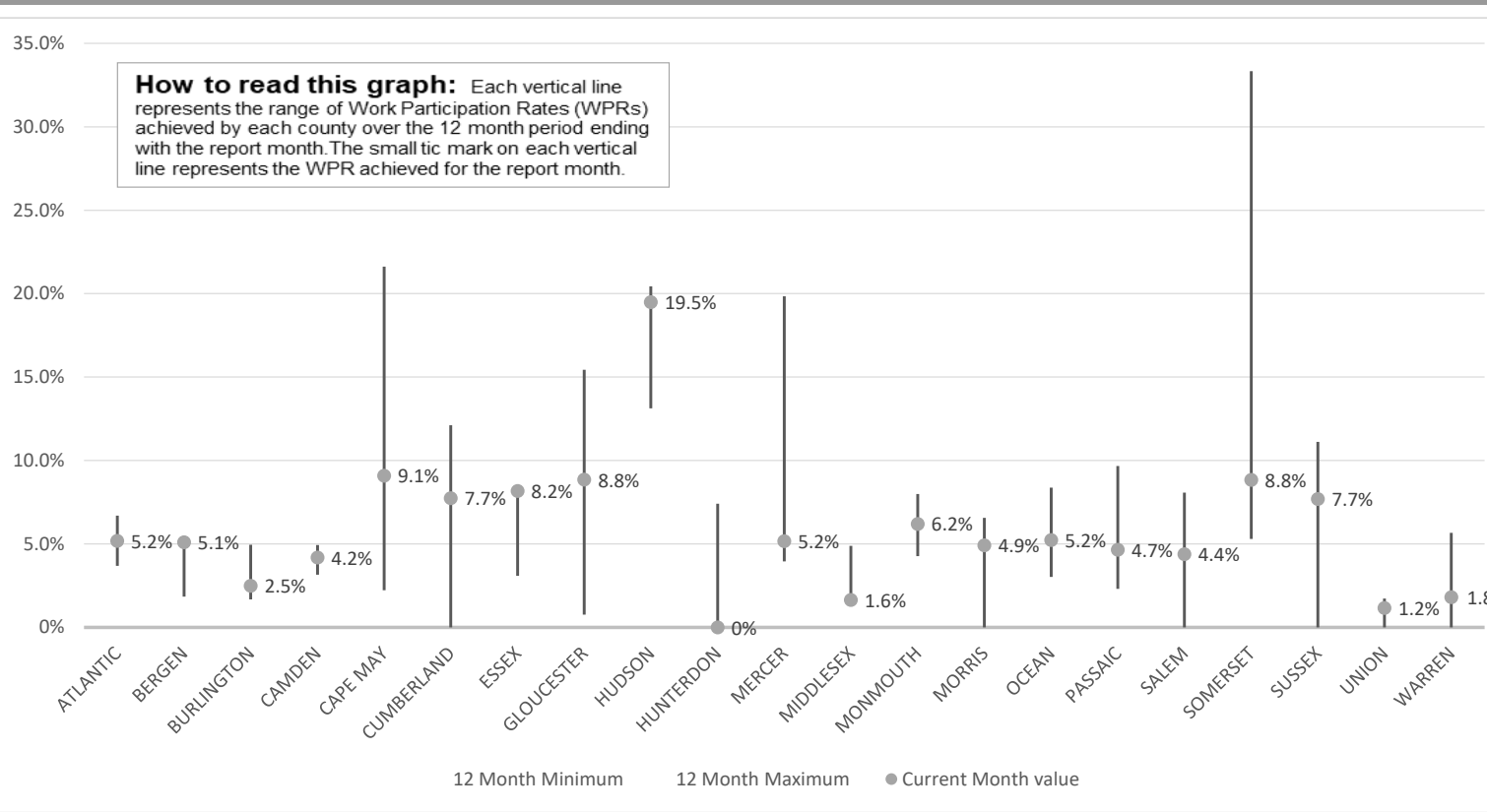
 $\Delta$ =higher caseload % change

\*=lower caseload % change



Data is derived from NJ MMIS Shared Data Warehouse Issuance files.  
Effective July 2013 this data query source was converted to the SDW

TABLE 3 :  
Work Participation Rates Achieved Over 12 Month Period  
Ending with NOVEMBER 2022

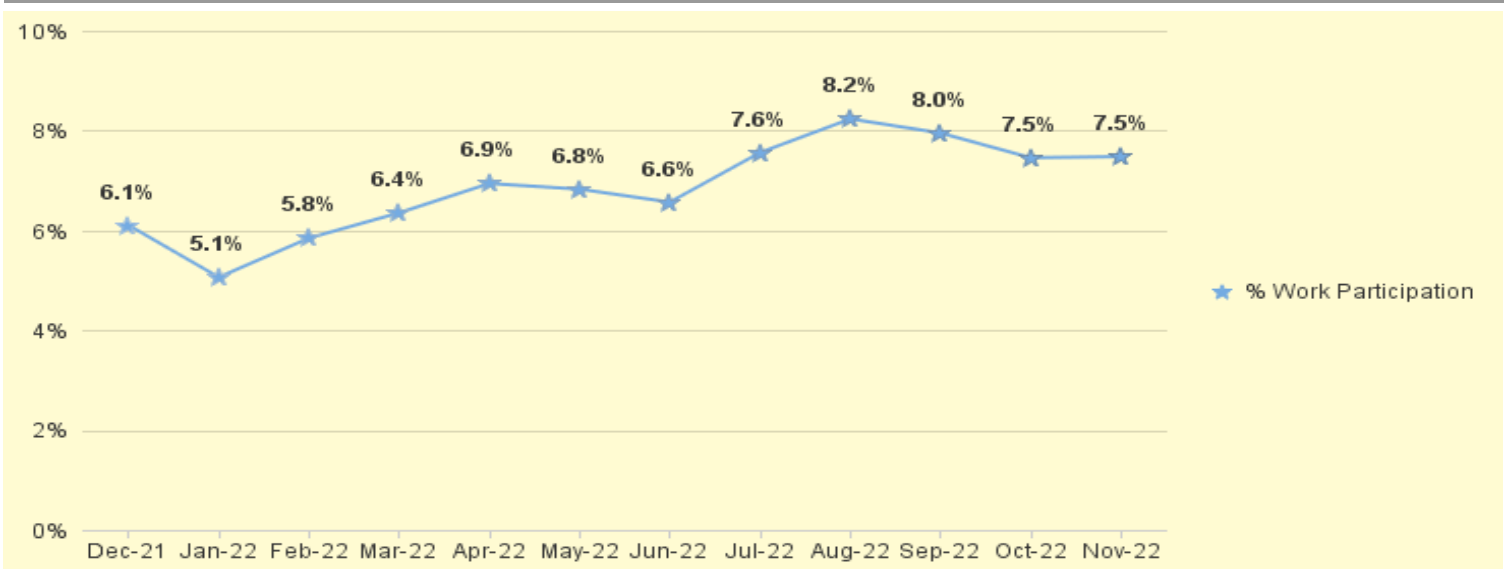


Data is derived from NJ MMIS Shared Data Warehouse Issuance files.  
Effective July 2013 this data query source was converted to the SDW



TABLE 4 :

**WFNJ/TANF Work Participation Rates  
for 12-Month Period Ending with NOVEMBER 2022 Statewide**



\* The Work Participation rate measures the number of countable Temporary Assistance for Needs Families (TANF) participants based on federal formula. The reported rate is considered to be preliminary until officially calculated by the federal government soon after the close of each federal fiscal year.

TABLE 5 :

NJ SNAP

**NUMBER OF PARTICIPATING HOUSEHOLDS, PERSONS, ADULTS  
AND CHILDREN FOR NOVEMBER 2022 (STATEWIDE)**

**NOVEMBER 2020 THROUGH NOVEMBER 2022**

		HOUSEHOLDS				PERSONS					
		WFNJ/ TANF	Other low income	Total	% CHNG (1 YR)	Adults	Children	TOTAL	% CHNG (1 YR)	Age 60+	People with a disability
2020	NOV	10,335	395,876	406,211	18.7%	440,136	350,631	790,767	17.1%	123,104	216,208
	DEC	10,308	401,212	411,520	20.8%	446,083	354,408	800,491	19.3%	123,498	221,131
2020	Average	10,790	361,610	372,400		401,036	326,988	728,024		120,180	209,182
2021	JAN	10,214	409,050	419,264	24.8%	454,910	360,490	815,400	23.6%	123,751	221,129
	FEB	9,980	413,080	423,060	25.6%	459,801	362,760	822,561	24.4%	123,888	221,585
	MAR	9,632	418,259	427,891	27.7%	465,302	366,223	831,525	26.5%	124,614	222,961
	APR	9,474	423,186	432,660	24.3%	470,412	369,625	840,037	23.0%	125,182	224,256
	MAY	9,371	428,961	438,332	19.9%	476,827	373,151	849,978	18.4%	125,750	225,339
	JUN	9,833	440,525	450,358	21.8%	490,430	393,310	883,740	21.8%	126,085	227,479
	JUL	9,067	437,889	446,956	18.8%	485,975	379,528	865,503	17.8%	126,552	227,352
	AUG	9,070	442,333	451,403	17.4%	490,577	383,106	873,683	16.7%	127,091	228,513
	SEP	9,561	447,902	457,463	15.8%	497,122	390,345	887,467	15.4%	127,550	229,863
	OCT	9,822	452,139	461,961	14.3%	502,415	388,925	891,340	13.1%	128,700	231,751
	NOV	9,967	455,343	465,310	14.5%	506,476	391,904	898,380	13.6%	129,292	233,050
	DEC	10,138	458,239	468,377	13.8%	510,116	392,757	902,873	12.8%	129,744	238,680
2021	Average	9,677	435,576	445,253		484,197	379,344	863,541		126,517	227,663
2022	JAN	10,418	457,935	468,353	11.7%	509,801	392,651	902,452	10.7%	157,425	236,238
	FEB	10,486	451,733	462,219	9.3%	503,693	385,199	888,892	8.1%	156,540	232,864
	MAR	10,588	455,766	466,354	9.0%	508,290	388,977	897,267	7.9%	158,331	234,617
	APR	10,706	439,659	450,365	4.1%	491,276	375,105	866,381	3.1%	156,504	231,071
	MAY	10,669	423,672	434,341	-0.9%	474,542	360,324	834,866	-1.8%	154,816	227,400
	JUN	10,650	412,366	423,016	-6.1%	462,757	351,378	814,135	-7.9%	154,107	225,452
	JUL	10,910	400,990	411,900	-7.8%	451,428	343,730	795,158	-8.1%	152,494	222,166
	AUG	12,919	421,433	434,352	-3.8%	475,405	401,190	876,595	0.3%	151,643	224,286
	SEP	11,543	391,350	402,893	-11.9%	440,973	348,303	789,276	-11.1%	150,801	220,166
	OCT	11,175	384,016	395,191	-14.5%	433,352	329,837	763,189	-14.4%	152,434	220,723
	NOV	10,978	386,385	397,363	-14.6%	436,125	332,459	768,584	-14.4%	153,574	221,980
2022	Average To Date	11,004	420,482	431,486		471,604	364,468	836,072		154,456	227,151

This Table is based on those Households & Persons that received SNAP issuances (benefits) during the month

Data is derived from NJ MMIS Shared Data Warehouse.

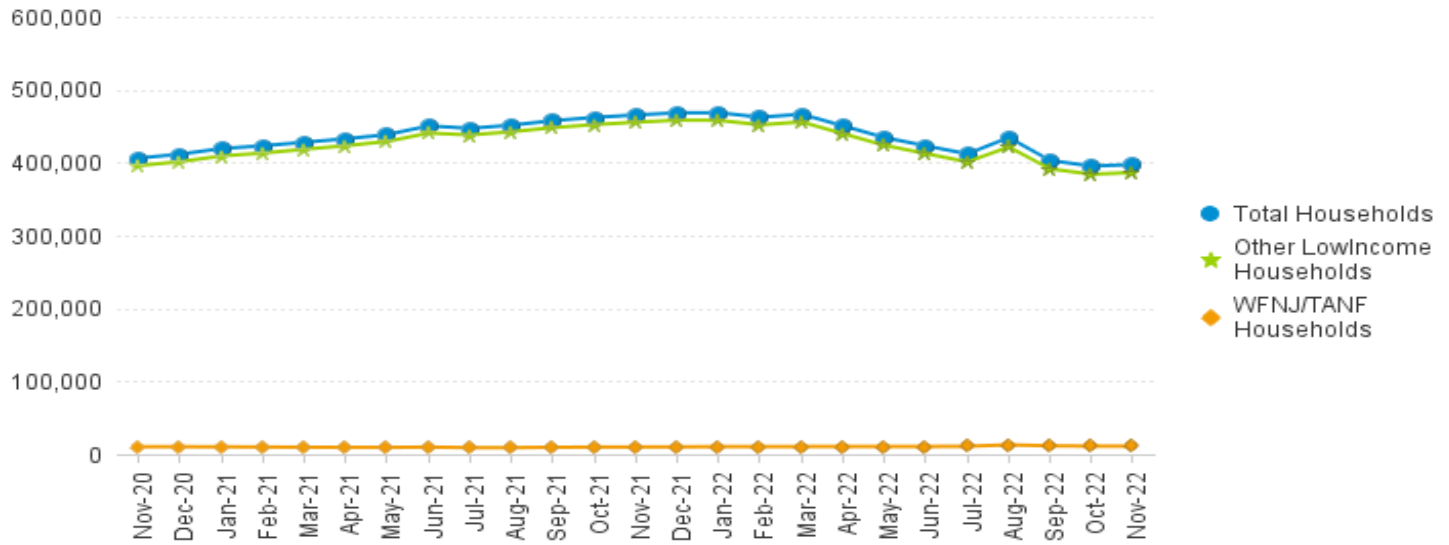
Effective July 2013 this data query source was converted to the SDW.

\* Age 60+ and People with a disability columns are independent subsets of total persons. An individual might appear in both columns

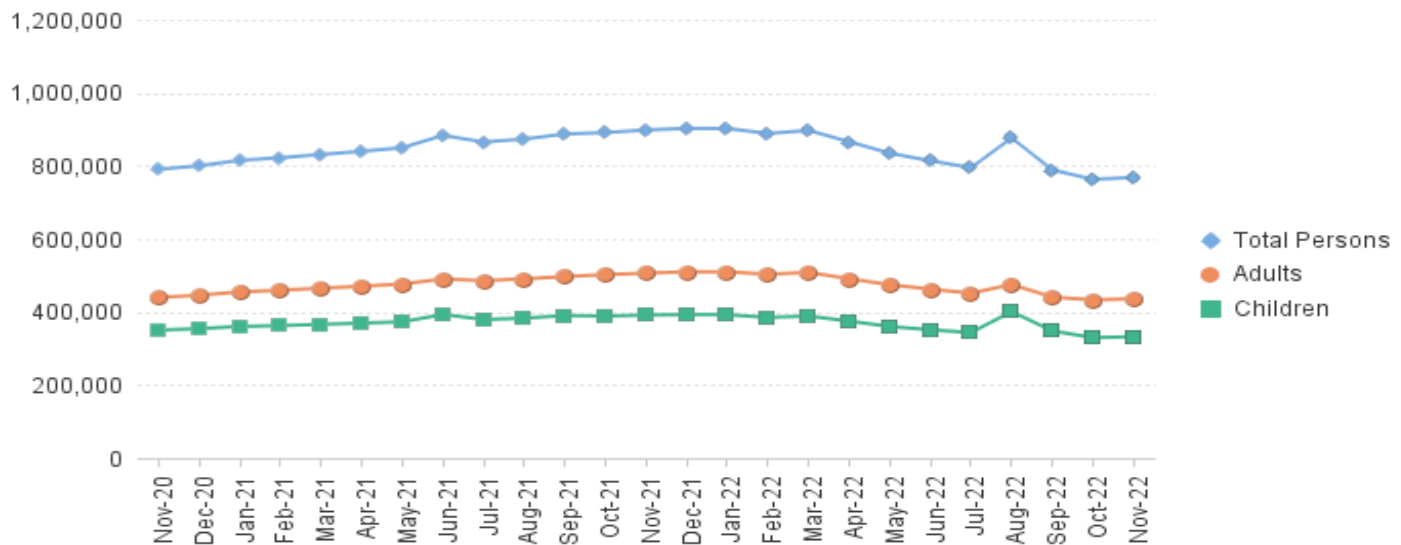
TABLE 6:

NJ SNAP  
(FOOD STAMPS)TRENDS FOR PARTICIPATING HOUSEHOLDS & PERSONS  
NOVEMBER 2020 THROUGH NOVEMBER 2022 (STATEWIDE)

## Statewide NJ SNAP Households: NOVEMBER 2020 Through NOVEMBER 2022



## Statewide NJ SNAP Persons: NOVEMBER 2020 Through NOVEMBER 2022



Data is derived from NJ MMIS Shared Data Warehouse Issuance files.

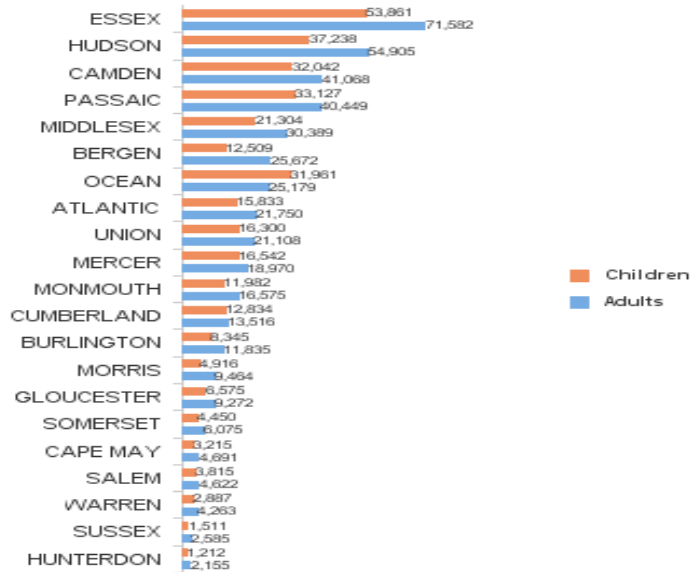
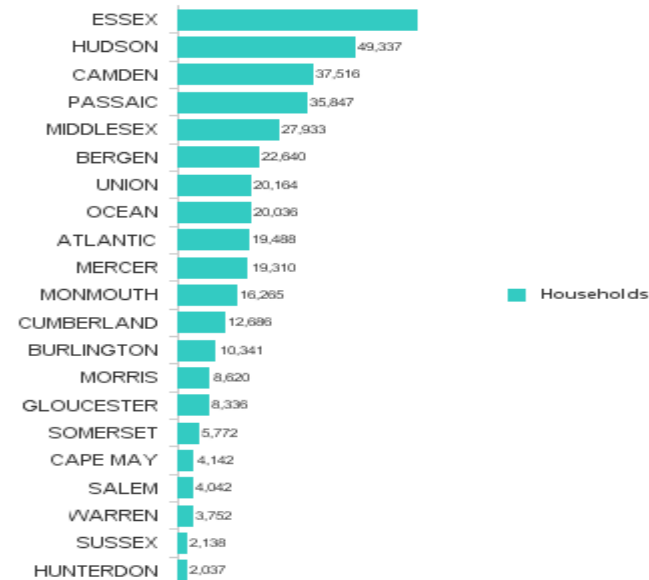
Effective July 2013 this data query source was converted to the SDW

TABLE 7 :  
NJ SNAPNUMBER OF PARTICIPATING HOUSEHOLDS, PERSONS, ADULTS  
AND CHILDREN BY COUNTY FOR NOVEMBER 2022

County	HOUSEHOLDS				PERSONS					
	WFNJ/ TANF	Other low income	TOTAL	% Chng (1 Yr)	Adults	Children	TOTAL	% Chng (1 Yr)	Age 60+	People with a disability
ATLANTIC	623	18,865	19,488	-14.4%	21,750	15,833	37,583	-13.2%	6,869	10,673
BERGEN	386	22,254	22,640	-4.3%	25,672	12,509	38,181	-3.7%	14,064	16,042
BURLINGTON	443	9,898	10,341	-17.2%	11,835	8,345	20,180	-17.7%	3,661	6,474
CAMDEN	1,413	36,103	37,516	-6.9%	41,068	32,042	73,110	-6.8%	10,935	19,641
CAPE MAY	85	4,057	4,142	-4.6%	4,691	3,215	7,906	-3.3%	1,361	2,315
CUMBERLAND	292	12,394	12,686	-8.9%	13,516	12,834	26,350	-8.1%	3,619	7,095
ESSEX	1,709	65,252	66,961	-14.7%	71,582	53,861	125,443	-15.5%	20,575	31,338
GLOUCESTER	236	8,100	8,336	-13.6%	9,272	6,575	15,847	-14.2%	3,037	5,932
HUDSON	1,602	47,735	49,337	-25.7% *	54,905	37,238	92,143	-24.3% *	21,664	27,598
HUNTERDON	57	1,980	2,037	4.0% Δ	2,155	1,212	3,367	2.0% Δ	781	1,163
MERCER	819	18,491	19,310	-2.9%	18,970	16,542	35,512	-3.0%	5,717	10,586
MIDDLESEX	590	27,343	27,933	-9.5%	30,389	21,304	51,693	-10.5%	13,909	17,565
MONMOUTH	226	16,039	16,265	-12.2%	16,575	11,982	28,557	-12.7%	6,871	9,874
MORRIS	120	8,500	8,620	-4.3%	9,464	4,916	14,380	-5.0%	4,869	5,494
OCEAN	358	19,678	20,036	-2.1% Δ	25,179	31,961	57,140	-1.3% Δ	6,814	10,726
PASSAIC	981	34,866	35,847	-25.0% *	40,449	33,127	73,576	-25.2% *	14,620	18,378
SALEM	176	3,866	4,042	-2.4% Δ	4,622	3,815	8,437	-0.2% Δ	1,186	2,341
SOMERSET	210	5,562	5,772	-8.7%	6,075	4,450	10,525	-8.4%	2,516	3,531
SUSSEX	38	2,100	2,138	-4.3%	2,585	1,511	4,096	-1.9%	933	1,569
UNION	516	19,648	20,164	-27.6% *	21,108	16,300	37,408	-29.4% *	8,226	11,228
WARREN	98	3,654	3,752	-11.3%	4,263	2,887	7,150	-12.0%	1,347	2,417
<b>NJ TOTAL</b>	<b>10,978</b>	<b>386,385</b>	<b>397,363</b>	<b>-14.6%</b>	<b>436,125</b>	<b>332,459</b>	<b>768,584</b>	<b>-14.4%</b>	<b>153,574</b>	<b>221,980</b>

Δ=higher caseload % change

\*=lower caseload % change

Total NJ SNAP Recipients  
NOVEMBER 2022 by County

Data is derived from NJ MMIS Shared Data Warehouse.

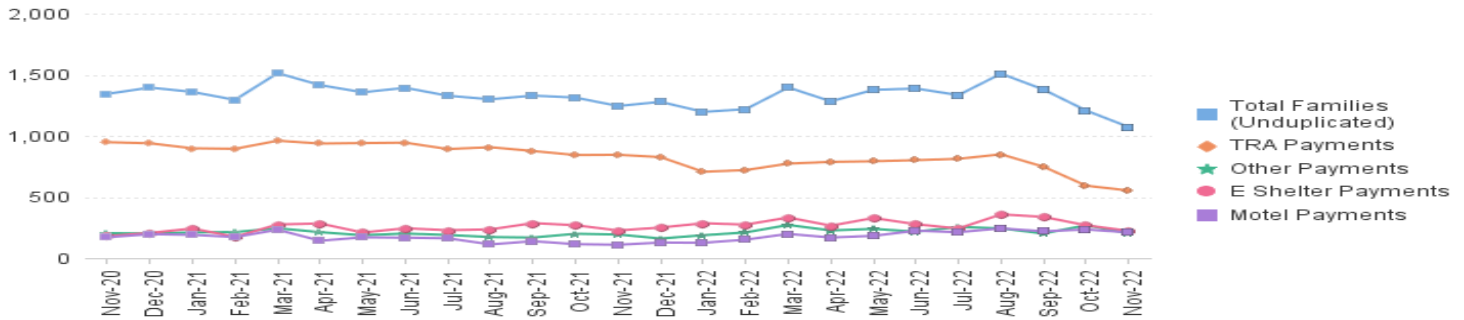
Effective July 2013 this data query source was converted to the SDW.

\* Age 60+ and People with a disability columns are independent subsets of total persons. An individual might appear in both columns

TABLE 8 :

EMERGENCY  
ASSISTANCE  
(STATEWIDE)TOTAL NUMBER OF ELIGIBLE FAMILIES RECEIVING EMERGENCY ASSISTANCE PAYMENTS  
NOVEMBER 2020 THROUGH NOVEMBER 2022 - STATEWIDE

		Total WFNJ/EA Families (Undupl)	% CHNG (1 YR)	Temp Rent Asst. Payments (Undupl)	% CHNG (1 YR)	Motel Housing Payments (Undupl)	% CHNG (1 YR)	Shelter/Transitional Housing Payments (Undupl)	% CHNG (1 YR)	Other WFNJ/EA Payments (Undupl)	% CHNG (1 YR)
2020	NOV	1,343	-13.6%	948	8.8%	170	19.7%	180	-52.9%	204	-50.6%
	DEC	1,395	-14.5%	939	9.8%	196	2.1%	206	-53.2%	201	-51.8%
2020	Average	1,560		970		220		303		274	
2021	JAN	1,359	-23.1%	898	-5.4%	190	-24.3%	242	-42.7%	210	-59.1%
	FEB	1,294	-19.1%	894	-4.1%	172	-5.0%	174	-52.3%	213	-47.9%
	MAR	1,513	-12.2%	960	-2.0%	232	19.0%	275	-32.3%	244	-47.2%
	APR	1,415	-2.7%	937	-2.4%	142	-7.2%	283	-15.3%	212	-47.2%
	MAY	1,356	-6.1%	941	5.7%	170	-28.6%	209	-22.6%	187	14.7%
	JUN	1,393	-14.6%	944	-6.9%	167	-37.0%	244	-20.0%	201	-14.1%
	JUL	1,328	-14.7%	892	-12.0%	162	-35.5%	228	-10.2%	189	-19.2%
	AUG	1,299	-20.0%	907	-9.8%	112	-59.9%	235	-22.4%	172	-27.7%
	SEP	1,329	-18.2%	876	-13.9%	138	-46.5%	286	-2.7%	168	-28.2%
	OCT	1,313	-15.7%	843	-15.4%	114	-43.3%	269	-7.9%	199	-19.4%
	NOV	1,244	-7.4%	845	-10.9%	109	-35.9%	226	25.6%	193	-5.4%
	DEC	1,278	-8.4%	826	-12.0%	127	-35.2%	250	21.4%	160	-20.4%
2021	Average	1,343		897		153		243		196	
2022	JAN	1,196	-12.0%	706	-21.4%	125	-34.2%	285	17.8%	187	-11.0%
	FEB	1,218	-5.9%	720	-19.5%	151	-12.2%	274	57.5%	210	-1.4%
	MAR	1,396	-7.7%	773	-19.5%	198	-14.7%	332	20.7%	271	11.1%
	APR	1,282	-9.4%	787	-16.0%	168	18.3%	265	-6.4%	226	6.6%
	MAY	1,376	1.5%	792	-15.8%	182	7.1%	328	56.9%	239	27.8%
	JUN	1,387	-0.4%	801	-15.1%	224	34.1%	277	13.5%	216	7.5%
	JUL	1,333	0.4%	812	-9.0%	212	30.9%	242	6.1%	255	34.9%
	AUG	1,509	16.2%	849	-6.4%	243	117.0%	358	52.3%	243	41.3%
	SEP	1,378	3.7%	747	-14.7%	219	58.7%	337	17.8%	201	19.6%
	OCT	1,207	-8.1%	592	-29.8%	234	105.3%	268	-0.4%	269	35.2%
	NOV	1,072	-13.8%	553	-34.6%	210	92.7%	223	-1.3%	203	5.2%
2022	Average To Date	1,305		739		197		290		229	

NJ STATEWIDE  
Families Receiving Emergency Assistance  
NOVEMBER 2020 THROUGH NOVEMBER 2022

WFNJ/EA data is derived from NJ MMIS Shared Data Warehouse.

Effective July 2013 this data query source was converted to the SDW.

\* Effective Feb '11 Transitional Housing Payments were removed from 'Other EA Payments' and added to 'Shelter Payments'.

**TABLE 9 :**  
**EMERGENCY**  
**ASSISTANCE**  
**(BY COUNTY)**

**TOTAL NUMBER OF ELIGIBLE FAMILIES RECEIVING EMERGENCY ASSISTANCE PAYMENTS**  
**BY COUNTY (UNDUPLICATED CASES) FOR NOVEMBER 2022**

County	TOTAL WFNJ/EA Families (Undupl)	% CHNG From NOV 21		Temp Rent Asst. Payments (Undupl)	Motel Housing Payments (Undupl)	Shelter/Transitional Housing Payments (Undupl)	Other WFNJ/EA Payments (Undupl)	SSI Receipients Receiving EA **
ATLANTIC	17	-62.2%	*	12	2	0	4	43
BERGEN	31	-31.1%		24	0	3	4	44
BURLINGTON	96	433.3%	Δ	6	54	40	2	61
CAMDEN	23	-17.9%		6	6	5	8	18
CAPE MAY	16	6.7%		5	12	0	1	10
CUMBERLAND	0	0%		0	0	0	0	0
ESSEX	89	-39.9%		24	1	52	15	8
GLOUCESTER	12	71.4%	Δ	2	0	6	5	5
HUDSON	217	8.5%		164	11	40	39	64
HUNTERDON	7	-12.5%		5	0	0	4	2
MERCER	113	14.1%		62	33	7	21	81
MIDDLESEX	82	-36.9%		44	16	1	34	47
MONMOUTH	34	36.0%		1	8	27	3	16
MORRIS	19	111.1%	Δ	5	13	0	2	19
OCEAN	50	-38.3%		24	24	0	12	20
PASSAIC	130	-43.5%	*	88	5	21	23	9
SALEM	3	50.0%		1	0	1	1	2
SOMERSET	64	-11.1%		43	8	8	17	50
SUSSEX	2	0%		0	1	0	1	3
UNION	62	-11.4%		35	12	11	6	20
WARREN	5	-54.5%	*	2	4	1	1	1
<b>NJ Total</b>	<b>1,072</b>	<b>-13.8%</b>		<b>553</b>	<b>210</b>	<b>223</b>	<b>203</b>	<b>523</b>

Δ=higher caseload % change

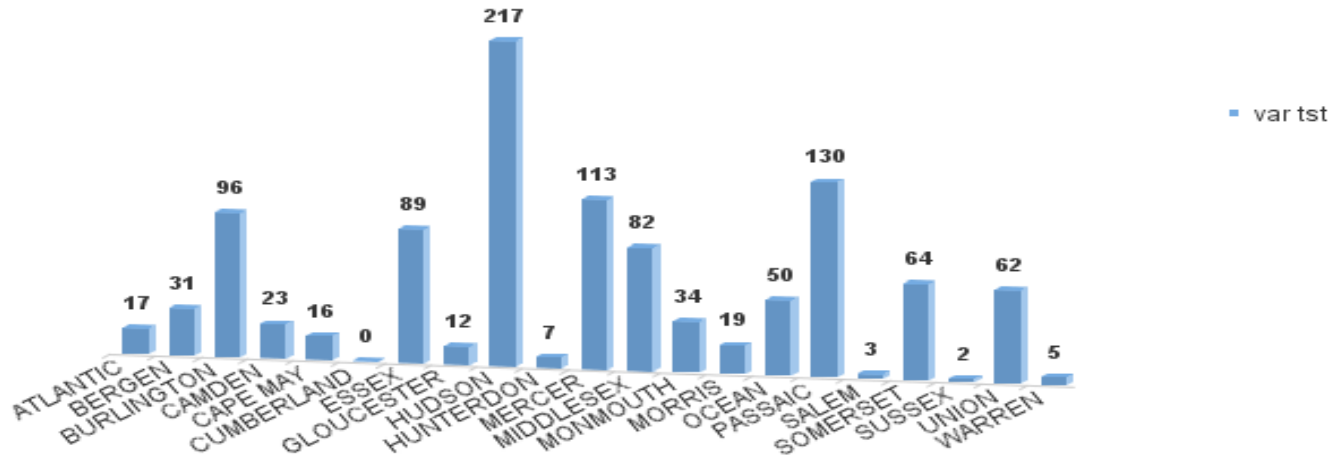
\*=lower caseload % change

\*\* SSI-EA includes pay codes 22 and 24, data is derived from NJ Division of Family Development FAMIS Report #FM430-03A

WFNJ/EA data is derived from NJ MMIS Shared Data Warehouse.

Effective July 2013 this data query source was converted to the SDW.

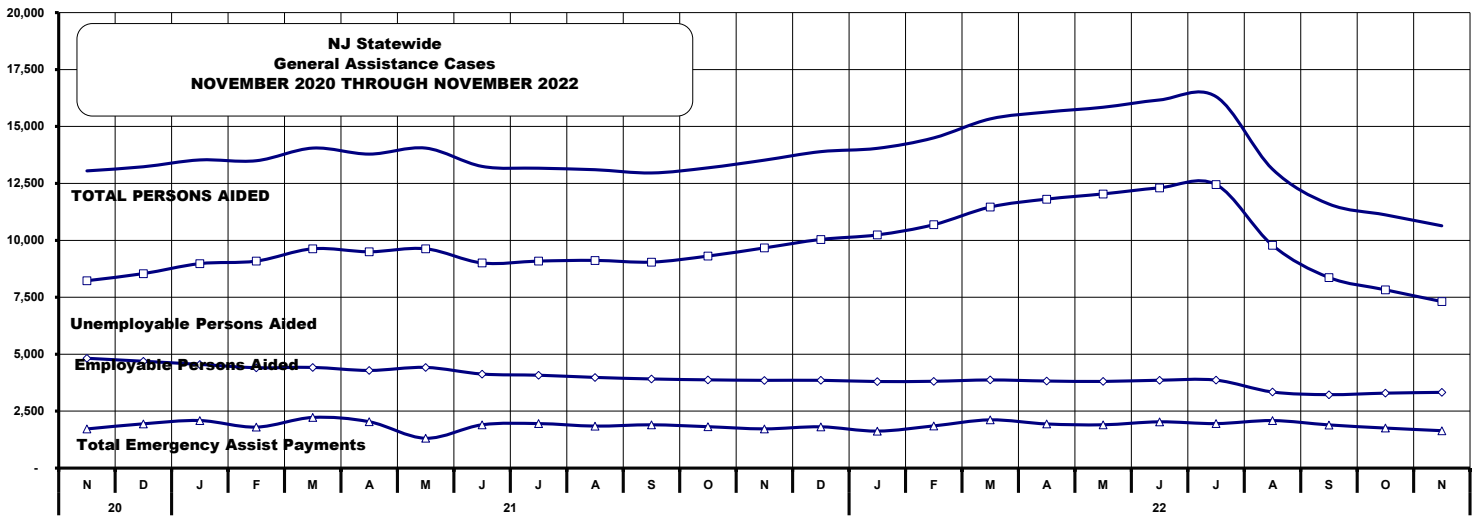
**Number WFNJ Families Receiving EA by County**  
**NOVEMBER 2022**



**TABLE 10:  
GENERAL  
ASSISTANCE  
PROGRAM**

**NUMBER OF EMPLOYABLE AND UNEMPLOYABLE RECIPIENTS  
AND EMERGENCY ASSISTANCE PAYMENTS - STATEWIDE  
NOVEMBER 2020 THROUGH NOVEMBER 2022**

	Total Cases						Emergency Assistance Cases			
	Employable	% Chng (1 Yr)	Unemployable	% Chng (1 Yr)	Total	% Chng (1 Yr)	Temporary Rental Assistance	Other GA-EA	Total	% Chng (1 Yr)
2020 NOV	8,228	111.0%	4,822	-19.5%	13,050	32.0%	835	884	1,719	-17.2%
2020 DEC	8,540	118.0%	4,691	-21.9%	13,231	33.3%	833	1,111	1,944	-4.7%
2020 AVERAGE	6,875		5,461		12,337		885	1,110	1,995	
2021 JAN	8,978	118.5%	4,553	-23.1%	13,531	34.9%	848	1,240	2,088	-1.8%
FEB	9,089	116.1%	4,407	-25.7%	13,496	33.2%	809	991	1,800	-10.3%
MAR	9,630	97.8%	4,421	-26.2%	14,051	29.4%	819	1,405	2,224	11.4%
APR	9,499	70.0%	4,288	-26.9%	13,787	20.4%	832	1,204	2,036	15.2%
MAY	9,630	38.8%	4,421	-23.6%	14,051	10.5%	819	491	1,310	-28.7%
JUN	9,007	18.7%	4,130	-32.8%	13,247	0.1%	794	1,108	1,902	-12.4%
JUL	9,090	13.7%	4,078	-26.1%	13,168	-2.6%	833	1,121	1,954	-9.6%
AUG	9,120	12.3%	3,982	-24.3%	13,102	-2.1%	753	1,091	1,844	-10.6%
SEP	9,045	10.6%	3,914	-23.7%	12,959	-2.6%	787	1,114	1,901	-12.9%
OCT	9,309	14.1%	3,875	-22.3%	13,184	0.3%	757	1,061	1,818	-7.3%
NOV	9,668	17.5%	3,853	-20.1%	13,521	3.6%	711	1,011	1,722	0.2%
2021 DEC	10,040	17.6%	3,855	-17.8%	13,895	5.0%	742	1,071	1,813	-6.7%
2021 AVERAGE	9,342		4,148		13,499		792	1,076	1,868	
2022 JAN	10,239	14.0%	3,801	-16.5%	14,040	3.8%	677	947	1,624	-22.2%
FEB	10,687	17.6%	3,812	-13.5%	14,499	7.4%	727	1,126	1,853	2.9%
MAR	11,462	19.0%	3,870	-12.5%	15,332	9.1%	719	1,399	2,118	-4.8%
APR	11,810	24.3%	3,823	-10.8%	15,633	13.4%	742	1,196	1,938	-4.8%
MAY	12,039	25.0%	3,805	-13.9%	15,844	12.8%	750	1,152	1,902	45.2%
JUN	12,306	36.6%	3,858	-6.6%	16,164	22.0%	782	1,250	2,032	6.8%
JUL	12,451	37.0%	3,862	-5.3%	16,313	23.9%	758	1,196	1,954	0.0%
AUG	9,785	7.3%	3,342	-16.1%	13,127	0.2%	691	1,396	2,087	13.2%
SEP	8,370	-7.5%	3,225	-17.6%	11,595	-10.5%	635	1,261	1,896	-0.3%
OCT	7,829	-15.9%	3,291	-15.1%	11,120	-15.7%	574	1,184	1,758	-3.3%
NOV	7,313	-24.4%	3,326	-13.7%	10,639	-21.3%	602	1,040	1,642	-4.6%
2022 AVERAGE TO DATE	10,390		3,638		14,028		696	1,195	1,891	



**TABLE 11:  
GENERAL  
ASSISTANCE  
PROGRAM**

**EMPLOYABLE AND UNEMPLOYABLE CASES  
AND EMERGENCY ASSISTANCE CASES RECEIVING PAYMENTS BY COUNTY  
NOVEMBER 2022**

	<u>Total Cases</u>						<u>Emergency Assistance Cases</u>			
	Employable	% Chng (1 Yr)	Unemployable	% Chng (1 Yr)	Total	% Chng (1 Yr)	Temporary Rental Assistance	Other GA-EA	Total	% Chng (1 Yr)
<b>ATLANTIC</b>	824	-5.9%	155	-17.1%	<b>979</b>	-7.9%	53	23	<b>76</b>	-19.1%
<b>BERGEN</b>	283	-11.3%	245	41.6%	<b>528</b>	7.3%	74	22	<b>96</b>	4.3%
<b>BURLINGTON</b>	297	-15.6%	119	-42.5%	<b>416</b>	-25.6%	10	84	<b>94</b>	-13.8%
<b>CAMDEN</b>	1,125	-23.7%	405	-12.1%	<b>1,530</b>	-21.0%	32	67	<b>99</b>	2.1%
<b>CAPE MAY</b>	126	51.8%	43	7.5%	<b>169</b>	37.4%	12	43	<b>55</b>	120.0%
<b>CUMBERLAND</b>	224	-15.8%	133	54.7%	<b>357</b>	1.4%	0	11	<b>11</b>	450.0%
<b>ESSEX</b>	720	-29.0%	207	-29.8%	<b>927</b>	-29.2%	8	157	<b>165</b>	-21.8%
<b>GLOUCESTER</b>	187	28.1%	118	4.4%	<b>305</b>	17.8%	0	15	<b>15</b>	114.3%
<b>HUDSON</b>	844	-55.7%	257	-47.2%	<b>1,101</b>	-54.0%	89	26	<b>115</b>	-34.7%
<b>HUNTERDON</b>	112	-1.8%	65	62.5%	<b>177</b>	14.9%	11	20	<b>31</b>	-13.9%
<b>MERCER</b>	399	-3.4%	236	-10.6%	<b>635</b>	-6.2%	48	38	<b>86</b>	10.3%
<b>MIDDLESEX</b>	275	-43.1%	296	-8.1%	<b>571</b>	-29.1%	66	75	<b>141</b>	-16.1%
<b>MONMOUTH</b>	176	-21.8%	176	7.3%	<b>352</b>	-9.5%	1	51	<b>52</b>	-33.3%
<b>MORRIS</b>	185	33.1%	152	-2.6%	<b>337</b>	14.2%	46	48	<b>94</b>	40.3%
<b>OCEAN</b>	291	-12.1%	203	-6.0%	<b>494</b>	-9.7%	30	52	<b>82</b>	-27.4%
<b>PASSAIC</b>	291	-42.6%	156	-50.5%	<b>447</b>	-45.6%	25	2	<b>27</b>	-59.1%
<b>SALEM</b>	77	-39.4%	49	58.1%	<b>126</b>	-20.3%	0	3	<b>3</b>	50.0%
<b>SOMERSET</b>	187	17.6%	58	9.4%	<b>245</b>	15.6%	35	39	<b>74</b>	100.0%
<b>SUSSEX</b>	24	-51.0%	18	-18.2%	<b>42</b>	-40.8%	0	2	<b>2</b>	-85.7%
<b>UNION</b>	586	3.7%	171	18.8%	<b>757</b>	6.8%	52	236	<b>288</b>	41.2%
<b>WARREN</b>	80	-32.8%	64	-16.9%	<b>144</b>	-26.5%	10	26	<b>36</b>	-21.7%
<b>NJ TOTAL</b>	7,313	-24.4%	3,326	-13.7%	<b>10,639</b>	-21.3%	602	1,040	<b>1,642</b>	-4.6%

Δ= ↑ Caseload %

\* = ↓ Caseload %



**TABLE 12:**  
**OFFICE OF**  
**CHILD SUPPORT**  
**SERVICES**

**OFFICE OF CHILD SUPPORT SERVICES**  
**QUARTERLY PERFORMANCE REPORT**  
**STATE SUMMARY**  
**TITLE IV-D SOURCE COLLECTION REPORT**  
Comparison of Quarter-4 (FFY 2021 vs. FFY 2022)

COLLECTION SOURCE	TOTAL 7/1/2021 - 9/30/2021	% OF TOTAL COLLECTIONS	TOTAL 7/1/2022 - 9/30/2022	% OF TOTAL COLLECTIONS	DOLLAR CHANGE	% CHANGE
FEDERAL TAX	\$13,351,212	4.52%	\$5,398,777	2.04%	\$ (7,952,435)	-59.56%
STATE TAX	\$3,589,417	1.22%	\$2,387,266	0.90%	\$ (1,202,151)	-33.49%
UIB	\$26,526,653	8.99%	\$4,507,218	1.70%	\$ (22,019,435)	-83.01%
INC WITHHOLD	\$182,792,079	61.94%	\$182,713,102	68.89%	\$ (78,977)	-0.04%
FROM OTHER STATES	\$11,450,421	3.88%	\$10,397,202	3.92%	\$ (1,053,219)	-9.20%
ADMIN ENFORCEMENT	\$6,297,192	2.13%	\$4,636,386	0.02%	\$ (1,660,805)	-26.37%
OTHER	\$51,080,910	17.31%	\$55,190,514	20.81%	\$ 4,109,604	8.05%
<b>TOTAL COLLECTIONS*</b>	<b>\$295,087,884</b>	<b>100%</b>	<b>\$265,230,465</b>	<b>100%</b>	<b>\$ (29,857,418)</b>	<b>-10.12%</b>
<b>DISBURSED COLLECTIONS**</b>	<b>\$257,920,003</b>		<b>\$229,364,911</b>		<b>\$ (28,555,092)</b>	<b>-11.07%</b>

\* Includes collections on both current support and arrears.

\*\* Includes collections on both current support and arrears; also includes money sent to other states.

SOURCE: NJKiDS (Based on Federal Quarterly Report of Collections - OCSE-34A except Disbursed Collections)

Disbursed Collections obtained from Federal Data Report - OCSE-157, which is reported annually to Congress and used in the calculation of incentive dollars earned by each state.

**TABLE 13:**  
**OFFICE OF**  
**CHILD SUPPORT**  
**SERVICES**

**OFFICE OF CHILD SUPPORT SERVICES**  
**STATE SUMMARY**  
**TITLE IV-D PATERNITY ESTABLISHMENT REPORT**  
Comparison of November (FFY 2021 vs. FFY 2022)

County	NOVEMBER 2021			NOVEMBER 2022			Increase or Decrease (-) from FFY 2021 to FFY 2022
	Total Children Born Out of Wedlock*	Number of Paternities Established	Percent of Paternities Established	Total Children Born Out of Wedlock*	Number of Paternities Established	Percent of Paternities Established	
Atlantic	5,509	5,503	99.9%	5,045	5,013	99.4%	-0.5%
Bergen	2,739	2,679	97.8%	2,537	2,485	98.0%	0.1%
Burlington	4,261	4,156	97.5%	3,852	3,767	97.8%	0.3%
Camden	13,914	13,600	97.7%	12,758	12,500	98.0%	0.2%
Cape May	1,064	1,049	98.6%	921	921	100.0%	1.4%
Cumberland	5,914	5,857	99.0%	5,574	5,519	99.0%	0.0%
Essex	21,296	20,336	95.5%	19,401	18,473	95.2%	-0.3%
Gloucester	3,788	3,736	98.6%	3,401	3,387	99.6%	1.0%
Hudson	8,464	8,228	97.2%	7,865	7,593	96.5%	-0.7%
Hunterdon	202	200	99.0%	178	179	100.6%	1.6%
Mercer	5,894	5,722	97.1%	5,356	5,194	97.0%	-0.1%
Middlesex	5,536	5,395	97.5%	5,093	4,960	97.4%	-0.1%
Monmouth	4,198	4,089	97.4%	3,740	3,640	97.3%	-0.1%
Morris	1,063	1,050	98.8%	936	932	99.6%	0.8%
Ocean	4,212	4,127	98.0%	3,911	3,838	98.1%	0.2%
Passaic	8,677	8,415	97.0%	7,850	7,646	97.4%	0.4%
Salem	2,430	2,335	96.1%	2,352	2,270	96.5%	0.4%
Somerset	1,191	1,157	97.1%	1,041	1,021	98.1%	0.9%
Sussex	420	424	101.0%	408	411	100.7%	-0.2%
Union	9,129	8,709	95.4%	8,750	8,316	95.0%	-0.4%
Warren	716	721	100.7%	603	602	99.8%	-0.9%
<b>NJ TOTALS</b>	<b>110,617</b>	<b>107,488</b>	<b>97.2%</b>	<b>101,572</b>	<b>98,667</b>	<b>97.1%</b>	<b>0.0%</b>

SOURCE: NJKiDS (Based on Federal Performance Measures - OCSE-157)

\* Information on Out of Wedlock Births obtained from NJ Bureau of Vital Statistics

**TABLE 14:**  
**OFFICE OF**  
**CHILD SUPPORT**  
**SERVICES**

**OFFICE OF CHILD SUPPORT SERVICES**  
**STATE SUMMARY**  
**TITLE IV-D REPORT OF CASES WITH ORDERS**  
Comparison of November (FFY 2021 vs. FFY 2022)

County	NOVEMBER 2021			NOVEMBER 2022			Increase or Decrease (-) from FFY 2021 to FFY 2022
	Total Cases	Cases with Orders	% of Cases with Orders	Total Cases	Cases with Orders	% of Cases with Orders	
Atlantic	10,330	9,563	92.6%	9,775	9,067	92.8%	0.2%
Bergen	10,419	10,148	97.4%	10,057	9,761	97.1%	-0.3%
Burlington	11,362	10,767	94.8%	11,076	10,209	92.2%	-2.6%
Camden	25,349	24,153	95.3%	24,227	22,748	93.9%	-1.4%
Cape May	2,621	2,499	95.3%	2,469	2,350	95.2%	-0.2%
Cumberland	10,665	10,244	96.1%	10,334	9,740	94.3%	-1.8%
Essex	35,338	31,080	88.0%	33,910	29,419	86.8%	-1.2%
Gloucester	9,133	8,777	96.1%	8,721	8,316	95.4%	-0.7%
Hudson	17,345	15,723	90.6%	16,925	15,118	89.3%	-1.3%
Hunterdon	1,233	1,160	94.1%	1,153	1,077	93.4%	-0.7%
Mercer	11,507	10,532	91.5%	11,259	10,032	89.1%	-2.4%
Middlesex	15,075	14,208	94.2%	14,788	13,675	92.5%	-1.8%
Monmouth	11,448	10,940	95.6%	10,812	10,149	93.9%	-1.7%
Morris	5,089	4,925	96.8%	4,814	4,671	97.0%	0.3%
Ocean	12,695	12,259	96.6%	12,189	11,694	95.9%	-0.6%
Passaic	16,725	14,859	88.8%	15,975	14,018	87.7%	-1.1%
Salem	3,692	3,540	95.9%	3,566	3,360	94.2%	-1.7%
Somerset	3,978	3,744	94.1%	3,753	3,464	92.3%	-1.8%
Sussex	2,250	2,219	98.6%	2,212	2,153	97.3%	-1.3%
Union	16,225	15,419	95.0%	15,695	14,812	94.4%	-0.7%
Warren	2,392	2,282	95.4%	2,196	2,082	94.8%	-0.6%
<b>NJ TOTALS</b>	<b>234,871</b>	<b>219,041</b>	<b>93.3%</b>	<b>225,906</b>	<b>207,915</b>	<b>92.0%</b>	<b>-1.2%</b>

SOURCE: NJKiDS (Based on Federal Performance Measures - OCSE-157)

**TABLE 15:**  
**OFFICE OF**  
**CHILD SUPPORT**  
**SERVICES**

**OFFICE OF CHILD SUPPORT SERVICES**  
**STATE SUMMARY**  
**TITLE IV-D COLLECTIONS ON CURRENT SUPPORT**  
Comparison of November (FFY 2021 vs. FFY 2022)

County	NOVEMBER 2021			NOVEMBER 2022			Increase or Decrease (-) from FFY 2021 to FFY 2022
	Total Current Support Due	Total Current Support Distributed	Total Collection Rate	Total Current Support Due	Total Current Support Distributed	Total Collection Rate	
Atlantic	\$3,440,836	\$2,152,827	62.6%	\$3,353,717	\$2,088,788	62.3%	-0.3%
Bergen	\$7,468,189	\$5,577,659	74.7%	\$7,171,266	\$5,339,948	74.5%	-0.2%
Burlington	\$5,077,048	\$3,458,575	68.1%	\$4,838,877	\$3,269,251	67.6%	-0.6%
Camden	\$7,295,098	\$4,240,602	58.1%	\$6,939,571	\$4,021,586	58.0%	-0.2%
Cape May	\$973,080	\$642,248	66.0%	\$899,079	\$596,037	66.3%	0.3%
Cumberland	\$2,794,206	\$1,594,903	57.1%	\$2,695,501	\$1,564,655	58.0%	1.0%
Essex	\$9,626,545	\$5,571,466	57.9%	\$9,287,011	\$5,410,040	58.3%	0.4%
Gloucester	\$3,752,310	\$2,516,708	67.1%	\$3,540,855	\$2,313,383	65.3%	-1.7%
Hudson	\$6,670,974	\$4,394,943	65.9%	\$6,458,851	\$4,172,201	64.6%	-1.3%
Hunterdon	\$1,077,408	\$881,063	81.8%	\$963,155	\$815,441	84.7%	2.9%
Mercer	\$3,617,678	\$2,268,933	62.7%	\$3,518,604	\$2,221,520	63.1%	0.4%
Middlesex	\$6,825,028	\$4,615,842	67.6%	\$6,457,280	\$4,378,719	67.8%	0.2%
Monmouth	\$6,248,557	\$4,540,717	72.7%	\$5,821,329	\$4,158,565	71.4%	-1.2%
Morris	\$3,912,589	\$2,863,067	73.2%	\$3,718,247	\$2,722,447	73.2%	0.0%
Ocean	\$5,861,452	\$4,136,203	70.6%	\$5,610,888	\$3,940,529	70.2%	-0.3%
Passaic	\$5,894,868	\$3,649,885	61.9%	\$5,562,994	\$3,469,992	62.4%	0.5%
Salem	\$986,814	\$581,444	58.9%	\$987,375	\$581,333	58.9%	0.0%
Somerset	\$2,611,599	\$2,098,175	80.3%	\$2,347,109	\$1,942,559	82.8%	2.4%
Sussex	\$1,590,456	\$1,213,430	76.3%	\$1,506,223	\$1,129,644	75.0%	-1.3%
Union	\$6,265,910	\$4,249,038	67.8%	\$6,172,861	\$4,090,611	66.3%	-1.5%
Warren	\$1,110,013	\$807,064	72.7%	\$1,060,854	\$770,071	72.6%	-0.1%
<b>NJ TOTALS</b>	<b>\$93,100,659</b>	<b>\$62,054,791</b>	<b>66.7%</b>	<b>\$88,911,647</b>	<b>\$58,997,321</b>	<b>66.4%</b>	<b>-0.3%</b>

SOURCE: NJKiDS (Based on Federal Performance Measures - OCSE-157)

**TABLE 16:**  
**OFFICE OF**  
**CHILD SUPPORT**  
**SERVICES**

**OFFICE OF CHILD SUPPORT SERVICES**  
**STATE SUMMARY**  
**TITLE IV-D CASES ARREARS COLLECTION REPORT**

Comparison of November (FFY 2021 vs. FFY 2022)

County	NOVEMBER 2021			NOVEMBER 2022			Increase or Decrease (-) from FFY 2021 to FFY 2022
	Total Cases with Arrears	Total Amount Collected	Average Arrears Collection per Case	Total Cases with Arrears	Total Amount Collected	Average Arrears Collection per Case	
Atlantic	6,434	\$659,582	\$102.52	6,048	\$665,733	\$110.07	\$7.56
Bergen	6,595	\$1,063,047	\$161.19	6,419	\$1,069,627	\$166.63	\$5.44
Burlington	7,170	\$940,760	\$131.21	6,724	\$947,615	\$140.93	\$9.72
Camden	14,807	\$1,448,433	\$97.82	13,755	\$1,462,286	\$106.31	\$8.49
Cape May	1,676	\$203,408	\$121.37	1,567	\$205,096	\$130.88	\$9.52
Cumberland	6,519	\$645,409	\$99.00	5,983	\$651,491	\$108.89	\$9.89
Essex	19,405	\$2,209,724	\$113.87	18,025	\$2,227,863	\$123.60	\$9.72
Gloucester	5,815	\$645,641	\$111.03	5,431	\$651,183	\$119.90	\$8.87
Hudson	10,689	\$1,161,854	\$108.70	10,254	\$1,172,217	\$114.32	\$5.62
Hunterdon	741	\$172,381	\$232.63	665	\$173,279	\$260.57	\$27.94
Mercer	7,126	\$871,208	\$122.26	6,718	\$878,048	\$130.70	\$8.44
Middlesex	9,408	\$1,104,778	\$117.43	8,947	\$1,113,842	\$124.49	\$7.06
Monmouth	7,125	\$1,203,472	\$168.91	6,520	\$1,210,161	\$185.61	\$16.70
Morris	3,335	\$600,873	\$180.17	3,102	\$604,155	\$194.76	\$14.59
Ocean	7,762	\$998,624	\$128.66	7,258	\$1,006,011	\$138.61	\$9.95
Passaic	10,018	\$1,141,688	\$113.96	9,361	\$1,151,163	\$122.97	\$9.01
Salem	2,192	\$202,991	\$92.61	2,065	\$205,149	\$99.35	\$6.74
Somerset	2,454	\$396,650	\$161.63	2,304	\$399,116	\$173.23	\$11.59
Sussex	1,458	\$263,456	\$180.70	1,409	\$265,046	\$188.11	\$7.41
Union	10,003	\$1,457,665	\$145.72	9,588	\$1,467,399	\$153.05	\$7.32
Warren	1,520	\$188,058	\$123.72	1,389	\$189,571	\$136.48	\$12.76
<b>NJ TOTALS</b>	<b>142,252</b>	<b>\$17,579,702</b>	<b>\$123.58</b>	<b>133,532</b>	<b>\$17,716,049</b>	<b>\$132.67</b>	<b>\$9.09</b>

SOURCE: OCSE-157 Child Support Enforcement Annual Data Report

Table 17

## WORK FIRST NEW JERSEY STATISTICAL SUMMARY

WFNJ				November 2022				
COUNTY	EMPLOYMENT DIRECTED ACTIVITIES			EMPLOYED OPEN (WFNJ RECIPIENT)	SUPPORT SERVICES ON ACTIVE CASE		CLOSED FOR EMPLOYMENT THIS MONTH	POST ASSISTANCE CHILD CARE
	CWEP	ALL OTHER TRAINING	JOB SEARCH		CHILD CARE	TRAINING REL. EXPENSES		
ATLANTIC	19	45	13	45	32	65	6	15
BERGEN	19	6	67	13	35	1	5	1
BURLINGTON	95	19	60	19	30	10	2	7
CAMDEN	45	106	6	64	67	2	7	10
CAPE MAY	0	16	2	5	1	5	3	3
CUMBERLAND	0	16	22	13	15	33	7	2
ESSEX	41	187	1	87	63	83	17	51
GLOUCESTER	22	8	1	25	16	6	9	3
HUDSON	1	350	32	110	199	114	29	12
HUNTERDON	0	0	0	0	3	0	1	2
MERCER	0	94	0	49	98	8	11	49
MIDDLESEX	0	40	79	23	22	0	5	6
MONMOUTH	3	14	8	21	20	3	1	16
MORRIS	0	3	1	0	1	0	2	0
OCEAN	1	128	0	9	18	12	2	12
PASSAIC	16	56	0	23	31	5	12	9
SALEM	0	11	8	6	8	4	2	0
SOMERSET	8	7	13	23	12	21	3	3
SUSSEX	0	0	0	2	1	0	1	0
UNION	56	64	0	10	16	2	1	1
WARREN	0	8	0	6	2	0	0	4
STATE TOTAL	326	1,178	313	553	690	374	126	206

Data is derived from NJ Division of Family Development's FAMIS Reports RM064-01 &amp; RM703-51, AdHoc Reports 5549 &amp; 5598 and SDW Report WR00022WZ\_CC

**DIVISION OF FAMILY DEVELOPMENT CURRENT PROGRAM STATISTICS  
NOVEMBER 2022**

## **ACRONYMS**

**EMERGENCY ASSISTANCE (EA)** - Payments to those eligible for WFNJ/TANF or WFNJ/GA, authorized during the 30 consecutive days immediately following the emergency (defined as a substantial loss of shelter, food, clothing, or household furnishings by fire, flood or other similar disaster) or if eligible individual or family is in an imminent or actual state of homelessness.

**NJ SNAP** - Formerly the Food Stamp Program, now known as NJ SNAP (NJ Supplemental Nutrition Assistance Program) authorized by Congress as a nutritional supplement program to provide low income households with more food of greater variety and better nutrition. Program eligibility is based on household income, resources, and expenses for medical, shelter, and dependent care. CWA staff refers certain recipients to the New Jersey Department of Labor for participation in the Food Stamp Employment and Training Program.

**FAMIS:** Family Assistance Management Information System

**GAAS:** General Assistance Automated System

**NJKIDS:** New Jersey Kids Deserve Support (Child Support Information Management System)

**NJ MMIS SHARED DATA WAREHOUSE:** The Shared Data Warehouse (SDW) is the repository for New Jersey's DFD and Medicaid data. Since 2003, OptumInsight has administered the SDW and provided access to the data through a reporting tool known as Business Objects.

**OMEGA:** Online Management of Economic Goal Achievement

**SSI-EA:** Supplemental Security Income-Emergency Assistance

**WFNJ:** Work First New Jersey - Fully implemented July 1, 1997, this is New Jersey's welfare reform program which responds to the requirements of the Federal Personal Responsibility and Work Opportunity Reconciliation Act (**PRWORA**) of 1996. PRWORA established Temporary Assistance for Needy Families (**TANF**) as the replacement for AFDC cash assistance. WFNJ includes two segments, **WFNJ/TANF** for families with children, and **WFNJ/GA** (General Assistance) for single adults and couples without dependent children. WFNJ emphasizes achieving self-sufficiency and limits lifetime receipt of financial assistance to a total of five years.

**DIVISION OF FAMILY DEVELOPMENT CURRENT PROGRAM STATISTICS  
NOVEMBER 2022**

## **EXPLANATORY NOTES**

The Department of Human Services Division of Family Development provides basic income and an opportunity to achieve self-sufficiency for individuals and families served by the Division's programs. The Division provides leadership, direction and supervision to those public agencies responsible for administering those programs and plans for and develops policies to promote self-sufficiency.

### **WFNJ STATISTICAL SUMMARY (TABLE 17)**

**Employment Directed Activities (EDA)** - From Activities Summary Report (OMEGA report # RM064). Unduplicated count of persons participating in Community Work Experience Program (CWEP), All Other Training, or Job Search.

**Number of Persons Employed This Month, Still Receiving TANF** - Individuals with open "empl" activity on OMEGA. Ad hoc report.

**Participants Receiving Child Care Services** - From Issuance Disbursement Summary (OMEGA report # RM703). Total number of active participants who show receipt of Child Care.

**Number of Persons Closed on FAMIS Due to Employment** - From FAMIS report #5549-RM-2

**Post TANF and Receiving Child Care** - Persons no longer in receipt of TANF but still receiving child care. From Share Data Warehouse Child Care case count based on Child Care payments (SDW report WR00022WZ\_CC ).