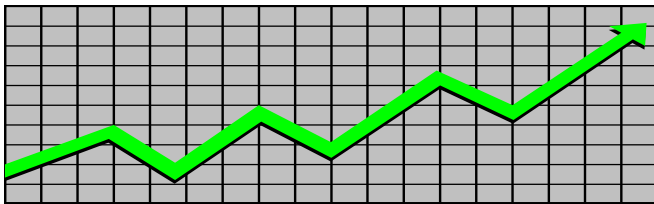


State of New Jersey
Department of Human Services
Division of Family Development

CURRENT PROGRAM STATISTICS



January 2026
Natasha Johnson, Assistant Commissioner

TABLE OF CONTENTS

HIGHLIGHTS:

WFNJ/TANF..... ii
NJ SNAP..... ii
EMERGENCY ASSISTANCE..... ii
GENERAL ASSISTANCE..... iii
GA Emergency Assistance..... iii
GA Program..... iii
CHILD SUPPORT SERVICES..... iii
WORK FIRST NEW JERSEY (WFNJ)..... iii
STATISTICS- BY STATE & COUNTY..... 1
Table 1: WFNJ/TANF Families & Persons (NJ Statewide) January 2024 to 2026..... 1
Table 2: WFNJ/TANF Families (by County)- January 2026..... 2
Table 2B: WFNJ/TANF Persons, Adults, & Children (by County)- January 2026..... 3
Table 3: TANF Work Participation Rates Over 12 Month Period (by County)- January 2026..... 4
Table 4: TANF Work Participation Rates Over 12 Month Period (NJ Statewide)- January 2026..... 5
Table 5: NJ SNAP Households/Persons (NJ Statewide) January 2024 to 2026..... 6
Table 6: NJ SNAP Recipient Trends (NJ Statewide) January 2024 to 2026..... 7
Table 7: NJ SNAP Households/Persons (by County)- January 2026..... 8
Table 8: Emergency Assistance Program (NJ Statewide) January 2024 to 2026..... 9
Table 9: Emergency Assistance Program (by County)- January 2026..... 10
Table 10: General Assistance Program (NJ Statewide) January 2024 to 2026..... 11
Table 11: General Assistance Program (by County)- January 2026..... 12
Table 12: Child Support Services Distributions (NJ Statewide) FFY 2026..... 13
Table 13: Child Support Services Paternities Established- January 2026..... 14
Table 14: Child Support Services Cases With Orders- January 2026..... 15
Table 15: Child Support Services Collections On Current Support- January 2026..... 16
Table 16: Child Support Services Cases With Payments On Arrears- January 2026..... 17
Table 17: WFNJ Statistical Summary- January 2026..... 18
ACRONYMS..... 19
EXPLANATORY NOTES..... 20
WFNJ Statistical Summary (Table 17)..... 20

DIVISION OF FAMILY DEVELOPMENT CURRENT PROGRAM STATISTICS

JANUARY 2026

Each month the Division of Family Development publishes its program statistics for: WFNJ/TANF, NJ SNAP, Emergency Assistance, General Assistance, and Child Support Services. When possible, information is provided separately for children and adults. Many tables also provide trend data with information broken down by county for readers to consider. This report is compiled and prepared by The Bureau of Research & Reporting.

WFNJ/TANF

- As of the end of January, the TANF caseload had decreased by 1893 cases, from 11,028 in January 2025 to 9,135 in January 2026; a decrease of -17.2%.
- The counties with caseloads that increased the most since January 2025 were Burlington (13.9%), Warren (6.9%), and Atlantic (3.4%).
- The counties with caseloads that decreased the most since January 2025 were Essex (-39.5%), Union (-39.2%), and Morris (-34.2%).
- Of the WFNJ/TANF cases, 1,925 or 21.1% were child-only in January 2026.
- The counties with the most child-only cases were Camden (349), Hudson (253), and Atlantic (161)
- Hudson (4,347), Camden (3,224), and Essex (2,415) counties had the greatest number of persons receiving TANF in January 2026.

NJ SNAP (Formerly FOOD STAMPS)

- In January 2026, there were 424,644 households receiving NJ SNAP benefits. The number of NJ SNAP households decreased by 13,782 or -3.1%, since January 2025.
- There were 785,810 persons receiving NJ SNAP benefits as of January 2026; a decrease of 33,406 or -4.1% since January 2025.
- The counties having the highest SNAP caseload increase since January 2025 were Burlington (7.9%), Somerset (2.3%), and Gloucester (0.9%).
- The counties having the highest SNAP caseload decrease since January 2025 were Essex (-7.8%), Mercer (-7.7%), and Sussex (-5.6%).

EMERGENCY ASSISTANCE

- There were 1,786 TANF families receiving Emergency Assistance (EA) in January 2026; an increase of 86 or 5.1% since January 2025.
- In January 2026, EA payments were made for 691 SSI recipients.

DIVISION OF FAMILY DEVELOPMENT CURRENT PROGRAM STATISTICS JANUARY 2026

- There were 2,915 GA cases with Emergency Assistance payments in January 2026; an increase of 515 or 21.5% since January 2025.
- The counties that showed the highest percent increase in Emergency Assistance payments were Salem (340%), Essex (139.4%), and Warren (124.2%).
- The counties that showed the highest percent decrease in Emergency Assistance payments were Cumberland (-70.8%), Monmouth (-43.6%), and Sussex (-40%).

GENERAL ASSISTANCE

- The total numbers of cases receiving GA has increased from 16,744 to 17,508 since January 2025; an increase of 4.6%.
- There were 13,273 Employable GA and 4,235 Unemployable GA cases in January 2026.
- The counties that showed a percent increase for GA cases were Burlington (32.2%), Warren (27.7%), and Essex (20.3%) since January 2025.
- The counties that showed the highest percent decrease for GA cases since January 2025 were Sussex (-38.1%), Bergen (-24.8%), and Morris (-11.2%).
- In January 2026, GA cases showed a -1.34% decrease since December 2025.

CHILD SUPPORT SERVICES (QUARTERLY REPORT)

- The total collection for the Child Support Services Program was about \$251 million from October 2025 to December 2025; a decrease of -2.48% over the same period from FFY 2025.
- Total distributions decreased -2% from December 2024.

WORK FIRST NEW JERSEY (WFNJ)

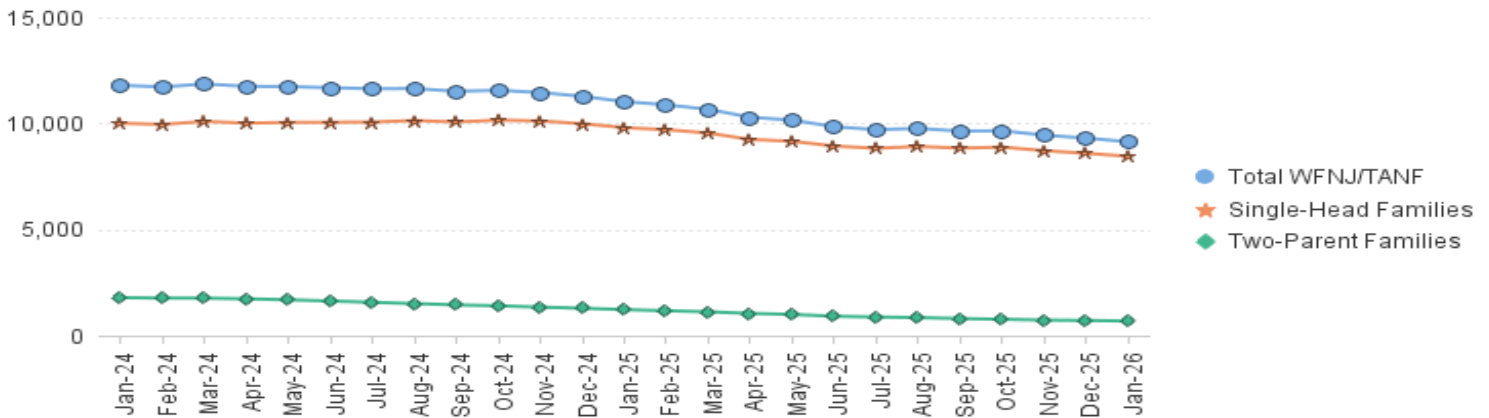
- During the report month of January 2026, there were 446 families in which at least one member was employed and an additional 127 families whose WFNJ assistance cases were closed due to employment - related earnings.
- The three counties with the greatest number of employed active WFNJ recipients were: Hudson (87), Essex (71), and Camden (66).
- There were 208 former TANF cases receiving post-TANF support in the form of child care assistance.

TABLE 1: WFNJ/TANF PROGRAM

STATEWIDE NUMBER OF APPLICATIONS AND TERMINATIONS DURING JANUARY 2026
 NUMBER OF ELIGIBLE FAMILIES & PERSONS RECEIVING WFNJ/TANF FOR JANUARY 2026

		JANUARY 2024 THROUGH JANUARY 2026										
		Cases Added	Cases Closed	Child-Only Cases ‡	Total Single-Head Families	2-Parent Families	Total WFNJ/TANF Families	%CHNG (1 Yr.)	Total Persons	%CHNG (1 Yr.)	Adults	Children
2024	JAN	819	879	2,456	10,010	1,790	11,800	7.1%	31,992	7.8%	11,134	20,858
	FEB	743	865	2,451	9,953	1,768	11,721	5.6%	31,775	5.8%	11,038	20,737
	MAR	784	797	2,453	10,095	1,767	11,862	6.4%	32,088	6.7%	11,176	20,912
	APR	832	944	2,414	10,014	1,733	11,747	6.0%	31,674	6.2%	11,066	20,608
	MAY	805	869	2,435	10,047	1,689	11,736	5.9%	31,556	5.7%	10,990	20,566
	JUN	816	920	2,444	10,054	1,631	11,685	5.3%	31,338	4.7%	10,872	20,466
	JUL	802	853	2,383	10,064	1,569	11,633	3.7%	31,312	3.6%	10,819	20,493
	AUG	864	932	2,370	10,138	1,508	11,646	3.0%	31,376	2.8%	10,784	20,592
	SEP	759	890	2,345	10,066	1,448	11,514	2.3%	30,858	1.4%	10,617	20,241
	OCT	894	894	2,352	10,157	1,406	11,563	0.4%	30,962	-0.6%	10,617	20,345
	NOV	797	936	2,336	10,115	1,342	11,457	-2.5%	30,753	-3.2%	10,463	20,290
	DEC	670	849	2,311	9,987	1,290	11,277	-4.9%	30,319	-5.5%	10,256	20,063
2024	Average	799	886	2,396	10,058	1,578	11,637		31,334		10,819	20,514
2025	JAN	732	1,001	2,289	9,802	1,226	11,028	-6.5%	29,582	-7.5%	9,965	19,617
	FEB	731	914	2,258	9,706	1,171	10,877	-7.2%	29,196	-8.1%	9,790	19,406
	MAR	619	872	2,227	9,543	1,120	10,663	-10.1%	28,685	-10.6%	9,556	19,129
	APR	581	1,000	2,133	9,246	1,046	10,292	-12.4%	27,686	-12.6%	9,205	18,481
	MAY	712	962	2,154	9,158	997	10,155	-13.5%	27,196	-13.8%	8,998	18,198
	JUN	597	907	2,118	8,931	914	9,845	-15.7%	26,193	-16.4%	8,641	17,552
	JUL	679	885	2,020	8,830	876	9,706	-16.6%	25,819	-17.5%	8,562	17,257
	AUG	727	801	2,042	8,916	850	9,766	-16.1%	25,922	-17.4%	8,574	17,348
	SEP	675	801	2,013	8,836	803	9,639	-16.3%	25,520	-17.3%	8,429	17,091
	OCT	744	764	2,010	8,884	771	9,655	-16.5%	25,600	-17.3%	8,416	17,184
	NOV	534	795	1,989	8,714	731	9,445	-17.6%	24,973	-18.8%	8,187	16,786
	DEC	593	730	1,954	8,591	716	9,307	-17.5%	24,588	-18.9%	8,069	16,519
2025	Average	660	869	2,101	9,096	935	10,032		26,747		8,866	17,881
2026	JAN	587	758	1,925	8,451	684	9,135	-17.2%	24,117	-18.5%	7,894	16,223
2026	Average To Date	587	758	1,925	8,451	684	9,135		24,117		7,894	16,223

NJ STATEWIDE
 Eligible Families Receiving WFNJ/TANF
 JANUARY 2024 THROUGH JANUARY 2026



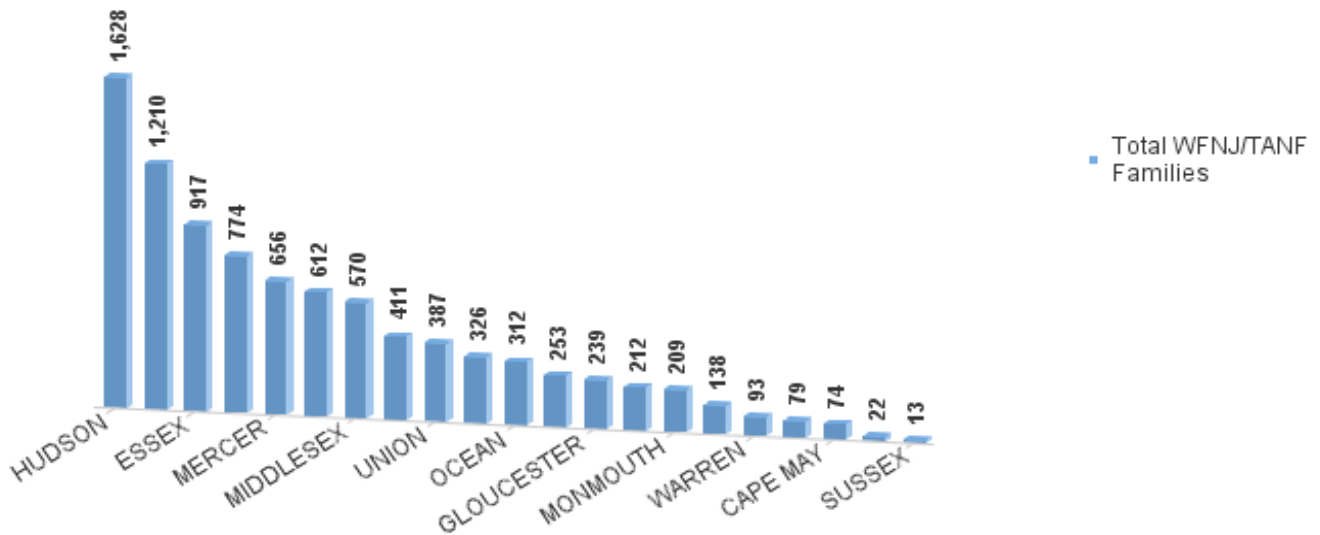
Data is derived from NJ MMIS Shared Data Warehouse Issuance files.
 Effective July 2013 this data query source was converted to the SDW

‡ Child-only cases are defined as families in which no eligible adult receives TANF program benefits, yet the family continues to be headed by at least one of the biological parents, or grandparents, or other appropriate adult.

TABLE 2:
WFNJ/TANF PROGRAM **NUMBER OF APPLICATIONS AND TERMINATIONS BY COUNTY DURING JANUARY 2026**
NUMBER OF ELIGIBLE FAMILIES RECEIVING WFNJ/TANF FOR JANUARY 2026

County	Cases Added	Cases Closed **	Child-	Total		Total		%CHNG (3 Mon)	%CHNG (1 Yr.)
			Only Cases ‡	1-Adult Cases	Single-Head Families	2-Parent Families	WFNJ/TANF Families		
ATLANTIC	26	25	161	411	572	40	612	0.2%	3.4% Δ
BERGEN	18	30	48	186	234	19	253	-3.8%	-17.9%
BURLINGTON	43	45	71	308	379	32	411	1.7%	13.9% Δ
CAMDEN	67	72	349	782	1,131	79	1,210	-3.2%	-16.0%
CAPE MAY	6	7	17	52	69	5	74	-6.3%	1.4%
CUMBERLAND	21	28	90	220	310	16	326	-2.1%	-7.4%
ESSEX	87	110	143	684	827	90	917	-4.4%	-39.5% *
GLOUCESTER	15	27	60	170	230	9	239	-5.2%	-12.8%
HUDSON	99	129	253	1,225	1,478	150	1,628	-1.6%	-16.6%
HUNTERDON	2	1	3	16	19	3	22	4.8%	-8.3%
MERCER	36	58	151	465	616	40	656	-6.7%	-19.2%
MIDDLESEX	27	44	156	375	531	39	570	-6.7%	-9.1%
MONMOUTH	11	14	35	165	200	9	209	-5.0%	-6.7%
MORRIS	5	7	13	57	70	9	79	-1.3%	-34.2% *
OCEAN	27	25	54	232	286	26	312	3.0%	-7.1%
PASSAIC	24	54	153	574	727	47	774	-4.7%	-14.1%
SALEM	21	21	30	98	128	10	138	-8.0%	-9.2%
SOMERSET	12	16	39	161	200	12	212	-4.5%	-5.4%
SUSSEX	3	2	6	6	12	1	13	-13.3%	-23.5%
UNION	31	36	72	272	344	43	387	-5.1%	-39.2% *
WARREN	6	7	21	67	88	5	93	-2.1%	6.9% Δ
NJ Total	587	758	1,925	6,526	8,451	684	9,135	-3.3%	-17.2%

**Total WFNJ/TANF Families
 JANUARY 2026
 By County**



Data is derived from NJ MMIS Shared Data Warehouse Issuance files.
 Effective July 2013 this data query source was converted to the SDW

‡ Child-only cases are defined as families in which no eligible adult receives TANF program benefits, yet the family continues to be headed by at least one of the biological parents, or grandparents, or other appropriate adult

** 'Cases closed' include cases that received a benefit in the prior month, but did not receive any TANF benefit for the report month.

Δ=higher caseload % change

*=lower caseload % change

TABLE 2B :
WFNJ/TANF
PROGRAM

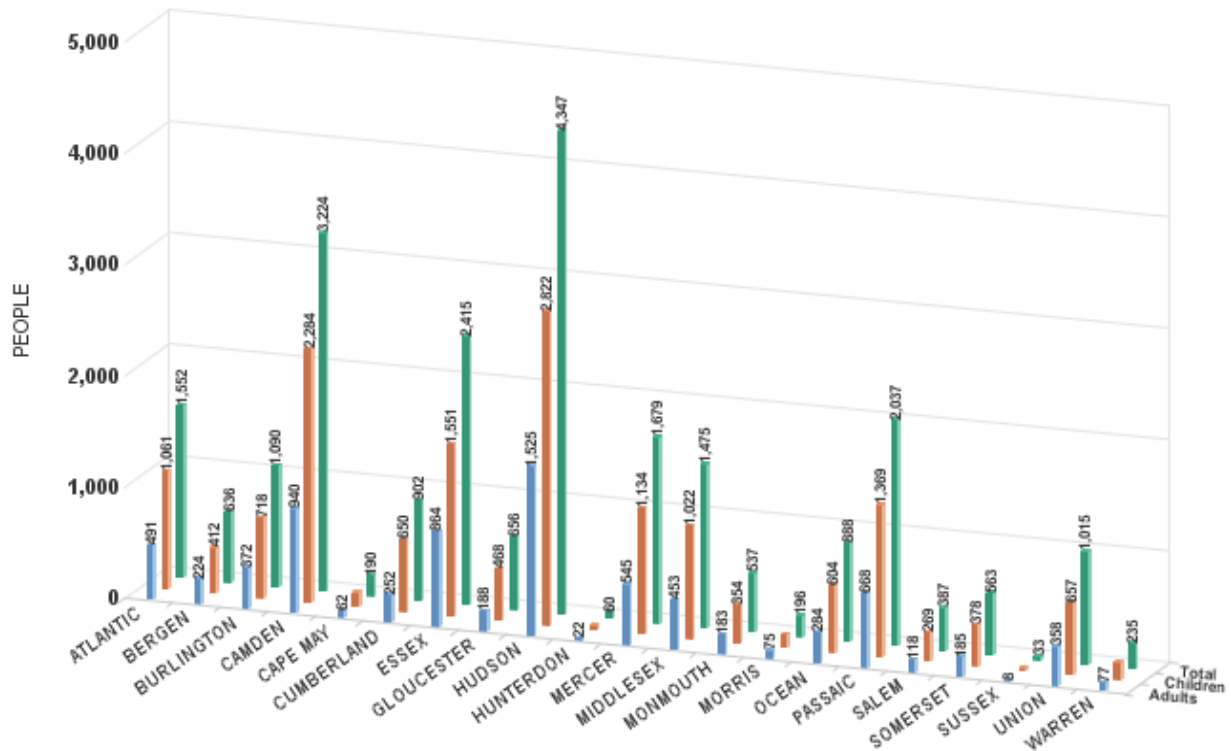
NUMBER OF PARTICIPATING PERSONS, ADULTS, AND CHILDREN
BY COUNTY FOR JANUARY 2026

PERSONS

County	Adults	Children	Child/Adult Ratio	Total Persons	% Chng (1 Yr)	Persons Per Case
ATLANTIC	491	1,061	2.16	1,552	4.8% Δ	2.54
BERGEN	224	412	1.84	636	-19.3%	2.51
BURLINGTON	372	718	1.93	1,090	11.9% Δ	2.65
CAMDEN	940	2,284	2.43	3,224	-18.1%	2.66
CAPE MAY	62	128	2.06	190	8.0% Δ	2.57
CUMBERLAND	252	650	2.58	902	-7.0%	2.77
ESSEX	864	1,551	1.80	2,415	-41.0% *	2.63
GLOUCESTER	188	468	2.49	656	-13.2%	2.74
HUDSON	1,525	2,822	1.85	4,347	-17.6%	2.67
HUNTERDON	22	38	1.73	60	-15.5%	2.73
MERCER	545	1,134	2.08	1,679	-20.5%	2.56
MIDDLESEX	453	1,022	2.26	1,475	-7.6%	2.59
MONMOUTH	183	354	1.93	537	-5.0%	2.57
MORRIS	75	121	1.61	196	-40.6% *	2.48
OCEAN	284	604	2.13	888	-7.8%	2.85
PASSAIC	668	1,369	2.05	2,037	-16.8%	2.63
SALEM	118	269	2.28	387	-12.0%	2.80
SOMERSET	185	378	2.04	563	-4.1%	2.66
SUSSEX	8	25	3.13	33	-21.4%	2.54
UNION	358	657	1.84	1,015	-41.7% *	2.62
WARREN	77	158	2.05	235	-0.8%	2.53
NJ Total	7,894	16,223	2.06	24,117	-18.5%	2.64

Δ=higher caseload % change

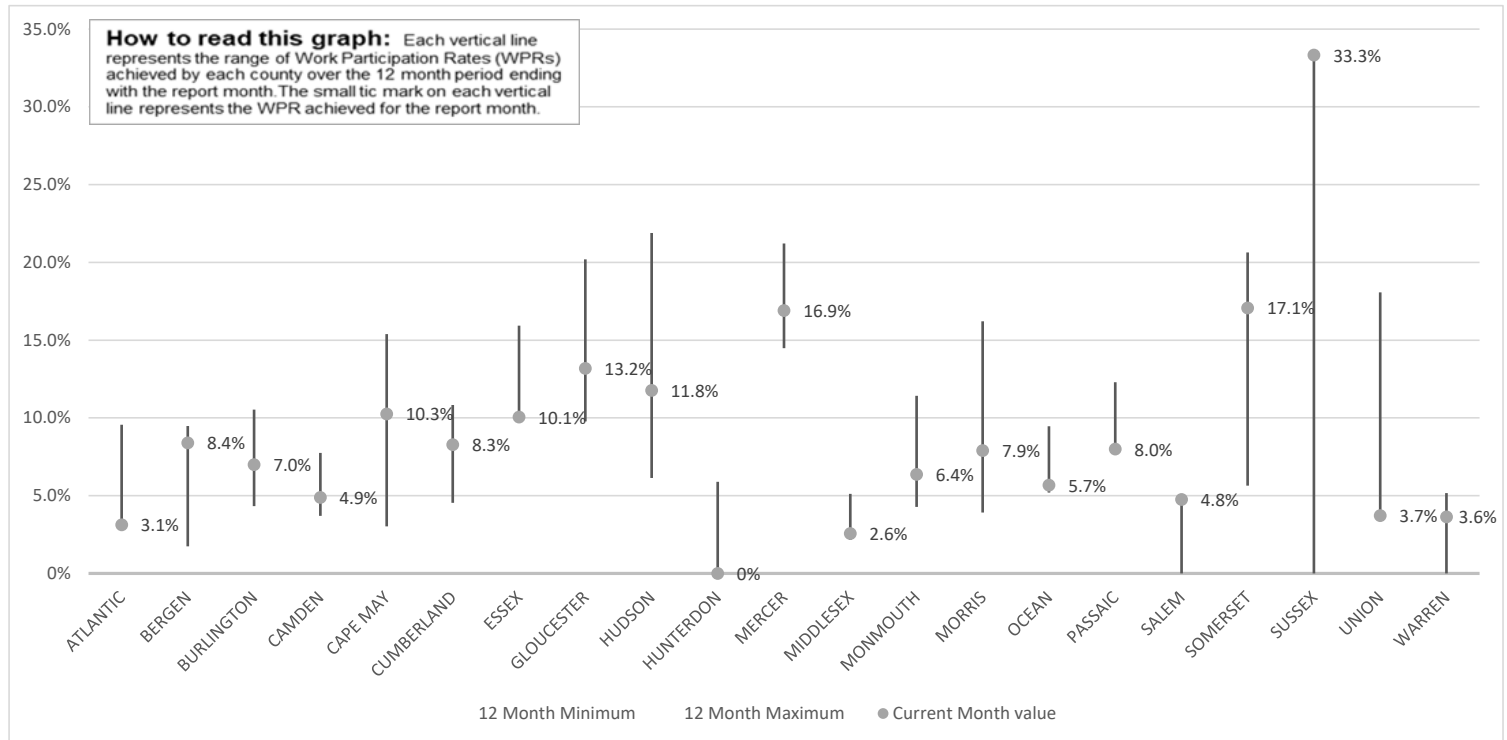
*=lower caseload % change



Data is derived from NJ MMIS Shared Data Warehouse Issuance files.
Effective July 2013 this data query source was converted to the SDW

TABLE 3:

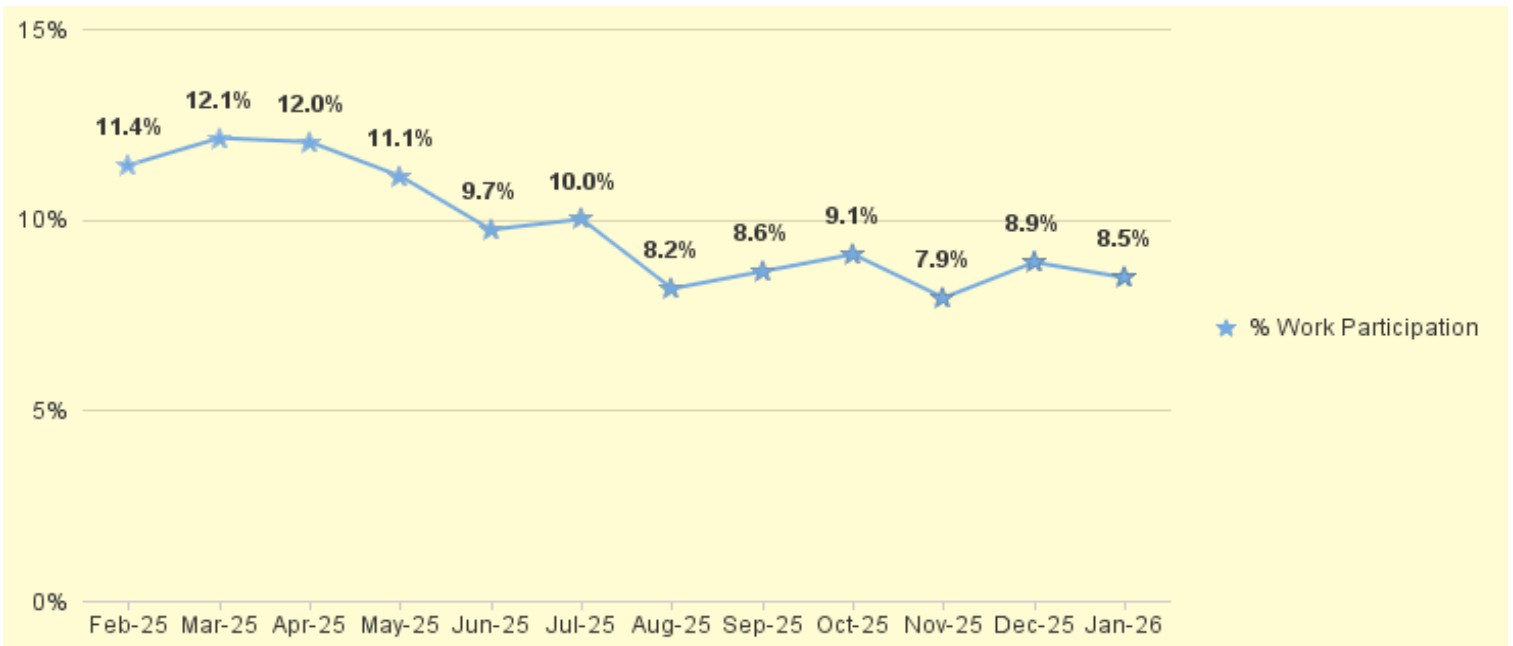
Work Participation Rates Achieved Over 12 Month Period
Ending with January 2026



Data is derived from NJ MMIS Shared Data Warehouse Issuance files.
Effective July 2013 this data query source was converted to the SDW

TABLE 4 :

WFNJ/TANF Work Participation Rates
for 12-Month Period Ending with JANUARY 2026 Statewide



* The Work Participation rate measures the number of countable Temporary Assistance for Needs Families (TANF) participants based on federal formula. The reported rate is considered to be preliminary until officially calculated by the federal government soon after the close of each federal fiscal year.

TABLE 5 :
NJ SNAP
(FOOD STAMPS)
NUMBER OF PARTICIPATING HOUSEHOLDS, PERSONS, ADULTS
AND CHILDREN FOR JANUARY 2026 (STATEWIDE)

JANUARY 2024 THROUGH JANUARY 2026

	HOUSEHOLDS				PERSONS				Age 60+	People with a disability
	WFNJ/ TANF	Other low income	Total	% CHNG (1 YR)	Adults	Children	TOTAL	% CHNG (1 YR)		
2024										
JAN	12,147	413,384	425,531	6.5%	462,636	348,128	810,764	4.7%	164,794	231,669
FEB	11,859	416,486	428,345	7.3%	465,489	348,007	813,496	5.0%	165,676	231,340
MAR	12,058	426,988	439,046	4.5%	476,761	357,715	834,476	0.1%	167,855	233,743
APR	11,717	426,510	438,227	4.2%	474,957	354,424	829,381	-0.2%	168,166	233,544
MAY	11,715	431,264	442,979	8.5%	479,707	356,729	836,436	6.1%	169,629	234,656
JUN	11,848	435,764	447,612	8.9%	484,805	359,806	844,611	6.6%	171,199	235,765
JUL	11,626	432,725	444,351	5.8%	481,340	354,315	835,655	1.6%	171,322	234,963
AUG	12,047	438,849	450,896	9.9%	488,286	358,835	847,121	7.4%	172,882	236,688
SEP	11,733	432,439	444,172	8.5%	480,588	350,383	830,971	5.9%	172,370	235,245
OCT	11,714	435,963	447,677	8.8%	484,036	353,435	837,471	6.4%	173,563	236,826
NOV	11,621	435,899	447,520	7.4%	483,897	354,051	837,948	5.2%	174,605	237,983
DEC	11,102	432,098	443,200	4.0%	479,225	350,243	829,468	1.7%	174,494	242,096
2024 Average	11,766	429,864	441,630		478,477	353,839	832,317		170,546	235,377
2025										
JAN	10,684	427,742	438,426	3.0%	473,595	345,621	819,216	1.0%	174,024	239,748
FEB	10,596	426,559	437,155	2.1%	472,395	344,628	817,023	0.4%	174,677	239,661
MAR	10,261	427,102	437,363	-0.4%	472,834	344,206	817,040	-2.1%	175,544	239,977
APR	9,895	423,209	433,104	-1.2%	467,962	338,278	806,240	-2.8%	176,498	241,244
MAY	10,288	430,911	441,199	-0.4%	476,932	347,088	824,020	-1.5%	177,110	241,530
JUN	9,869	425,482	435,351	-2.7%	470,908	340,031	810,939	-4.0%	176,636	240,279
JUL	9,667	416,494	426,161	-4.1%	461,161	331,955	793,116	-5.1%	173,635	235,831
AUG	10,124	426,328	436,452	-3.2%	472,541	340,425	812,966	-4.0%	176,706	240,378
SEP	9,884	422,373	432,257	-2.7%	467,857	334,844	802,701	-3.4%	177,916	240,765
OCT	9,884	424,227	434,111	-3.0%	469,797	336,005	805,802	-3.8%	179,250	243,077
NOV	9,759	421,103	430,862	-3.7%	466,284	333,068	799,352	-4.6%	178,676	241,919
DEC	9,531	420,568	430,099	-3.0%	467,842	329,621	797,463	-3.9%	179,230	247,182
2025 Average	10,037	424,342	434,378		470,009	338,814	808,823		178,768	241,920
2026										
JAN	9,445	415,199	424,644	-3.1%	461,709	324,101	785,810	-4.1%	178,323	244,394
2026 Average To Date	9,445	415,199	424,644		461,709	324,101	785,810		178,323	244,394

This Table is based on those Households & Persons that received SNAP issuances (benefits) during the month

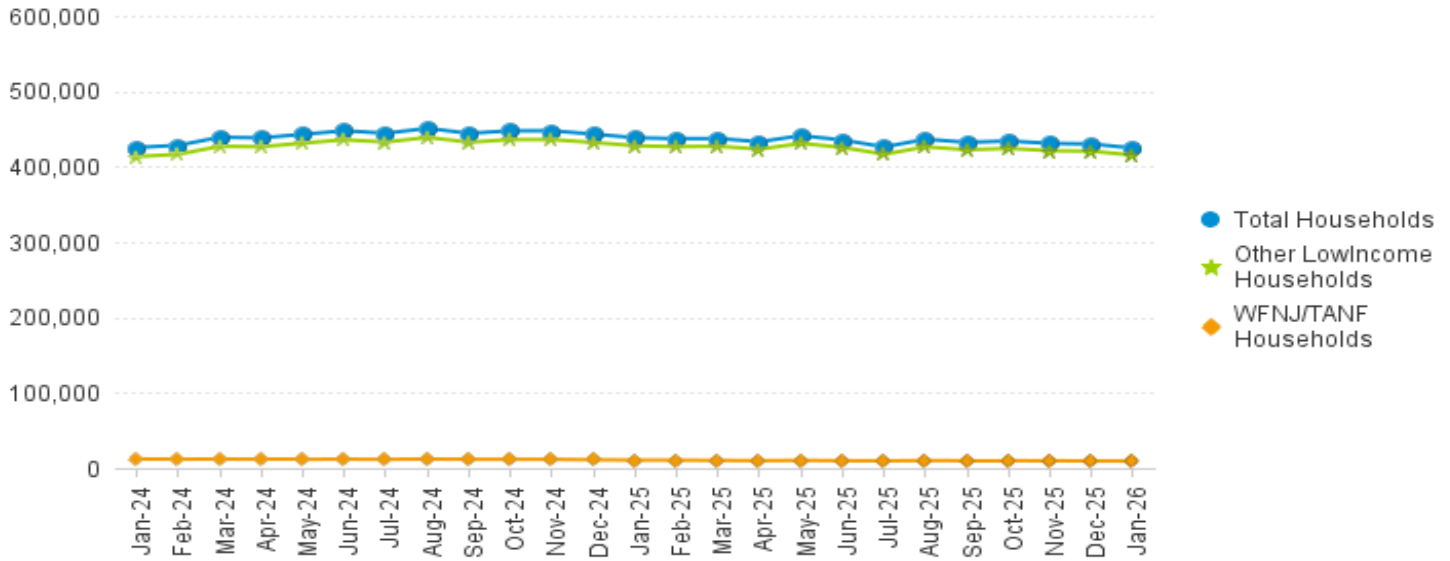
Data is derived from NJ MMIS Shared Data Warehouse.

Effective July 2013 this data query source was converted to the SDW.

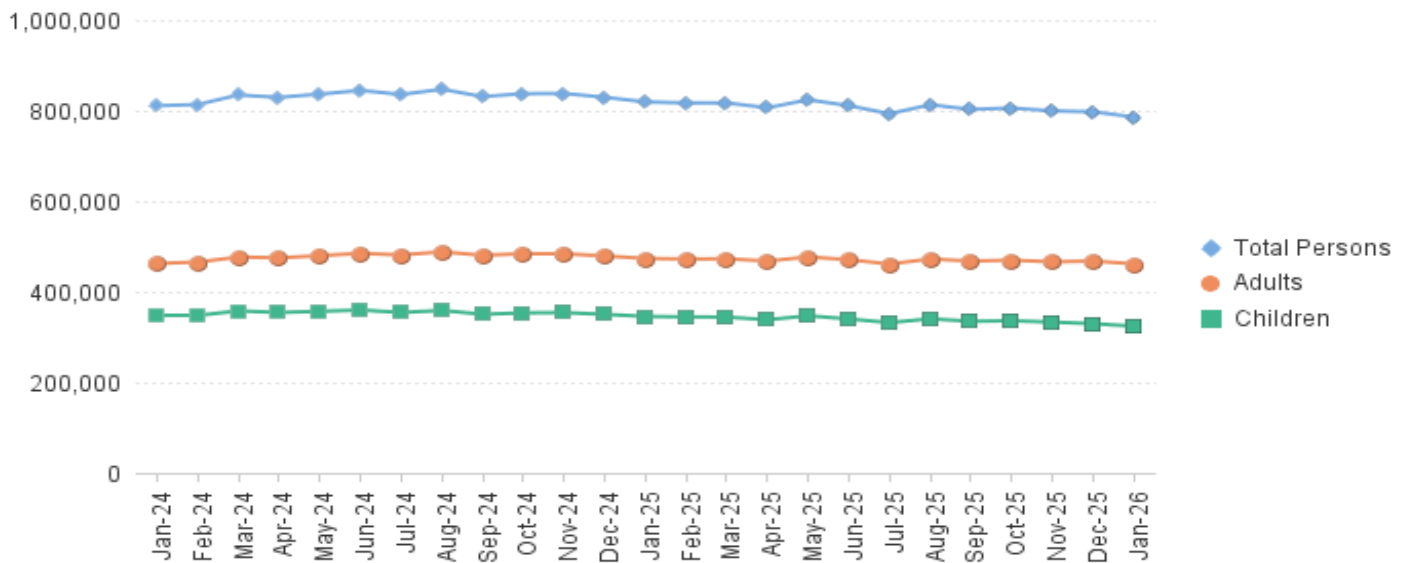
* Age 60+ and People with a disability columns are independent subsets of total persons. An individual might appear in both columns

**TABLE 6: NJ SNAP (FOOD STAMPS)
TRENDS FOR PARTICIPATING HOUSEHOLDS & PERSONS
JANUARY 2024 THROUGH JANUARY 2026 (STATEWIDE)**

Statewide NJ SNAP Households: JANUARY 2024 Through JANUARY 2026



Statewide NJ SNAP Persons: JANUARY 2024 Through JANUARY 2026



Data is derived from NJ MMIS Shared Data Warehouse Issuance files.
Effective July 2013 this data query source was converted to the SDW

TABLE 7 :

NJ SNAP

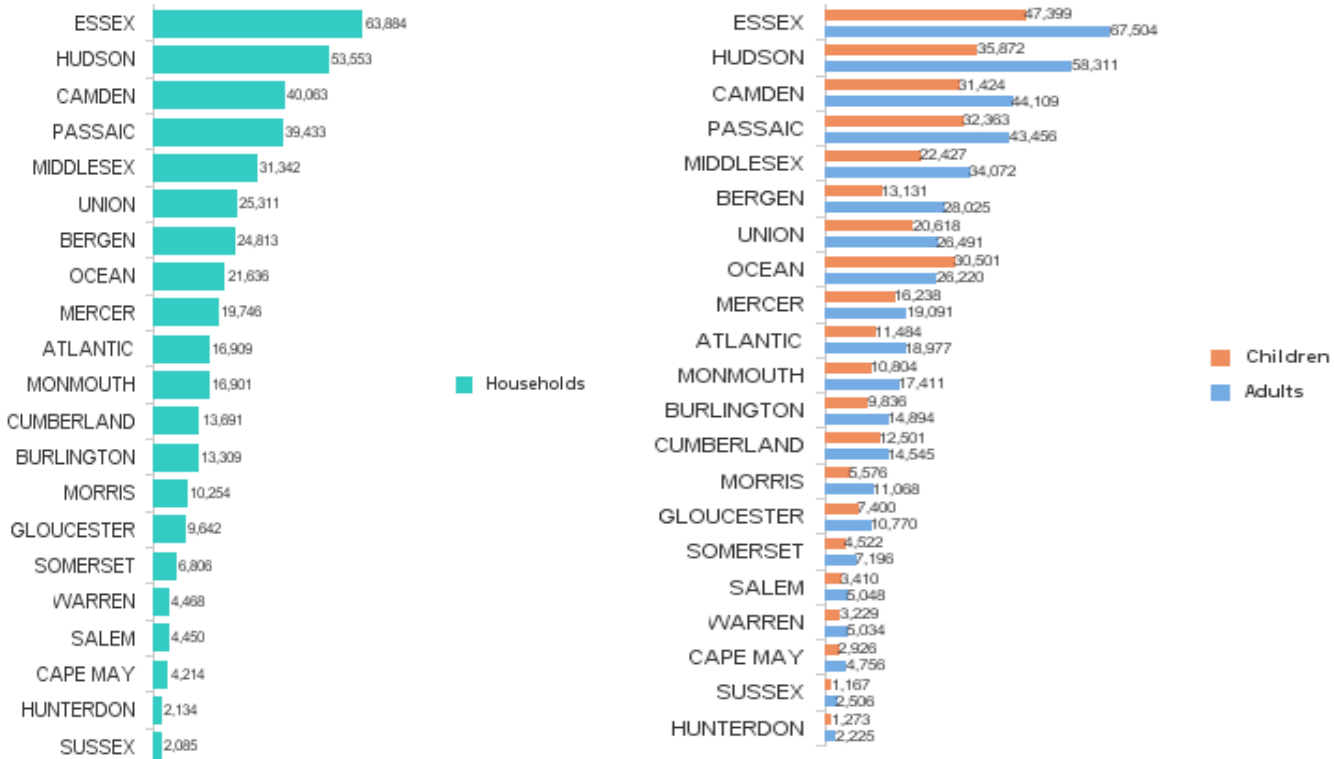
NUMBER OF PARTICIPATING HOUSEHOLDS, PERSONS, ADULTS AND CHILDREN BY COUNTY FOR JANUARY 2026

County	HOUSEHOLDS				PERSONS				Age 60+	People with a disability
	WFNJ/TANF	Other low income	TOTAL	% Chng (1 Yr)	Adults	Children	TOTAL	% Chng (1 Yr)		
ATLANTIC	560	16,349	16,909	-5.2%	18,977	11,484	30,461	-6.1%	6,996	10,091
BERGEN	271	24,542	24,813	-2.0%	28,025	13,131	41,156	-3.0%	15,885	17,951
BURLINGTON	426	12,883	13,309	7.9% Δ	14,894	9,836	24,730	7.1% Δ	4,693	7,881
CAMDEN	1,161	38,902	40,063	-1.9%	44,109	31,424	75,533	-2.6%	13,043	21,163
CAPE MAY	81	4,133	4,214	-3.8%	4,756	2,926	7,682	-5.8%	1,571	2,426
CUMBERLAND	295	13,396	13,691	-2.8%	14,545	12,501	27,046	-4.1%	4,233	7,749
ESSEX	1,337	62,547	63,884	-7.8% *	67,504	47,399	114,903	-8.0% *	22,653	32,511
GLOUCESTER	241	9,401	9,642	0.9% Δ	10,770	7,400	18,170	-0.3%	3,504	6,587
HUDSON	1,597	51,956	53,553	-4.4%	58,311	35,872	94,183	-5.6%	24,885	30,172
HUNTERDON	21	2,113	2,134	-0.5%	2,225	1,273	3,498	-3.4%	917	1,280
MERCER	658	19,088	19,746	-7.7% *	19,091	16,238	35,329	-8.5% *	6,444	11,119
MIDDLESEX	572	30,770	31,342	-0.1%	34,072	22,427	56,499	-2.1%	16,087	20,303
MONMOUTH	233	16,668	16,901	-4.6%	17,411	10,804	28,215	-6.8%	7,832	10,451
MORRIS	85	10,169	10,254	-2.7%	11,068	5,576	16,644	-4.3%	5,829	6,521
OCEAN	303	21,333	21,636	-0.3%	26,220	30,501	56,721	-1.9%	8,397	12,194
PASSAIC	767	38,666	39,433	-1.7%	43,456	32,363	75,819	-3.7%	17,656	21,310
SALEM	146	4,304	4,450	-2.1%	5,048	3,410	8,458	-4.6%	1,390	2,531
SOMERSET	205	6,601	6,806	2.3% Δ	7,196	4,522	11,718	0.3% Δ	3,224	4,418
SUSSEX	15	2,070	2,085	-5.6% *	2,506	1,167	3,673	-9.6% *	1,075	1,645
UNION	372	24,939	25,311	-2.3%	26,491	20,618	47,109	-0.2% Δ	10,295	13,298
WARREN	99	4,369	4,468	-0.6%	5,034	3,229	8,263	-1.9%	1,714	2,793
NJ TOTAL	9,445	415,199	424,644	-3.1%	461,709	324,101	785,810	-4.1%	178,323	244,394

Δ=higher caseload % change

*=lower caseload % change

Total NJ SNAP Recipients JANUARY 2026 by County



Data is derived from NJ MMIS Shared Data Warehouse.

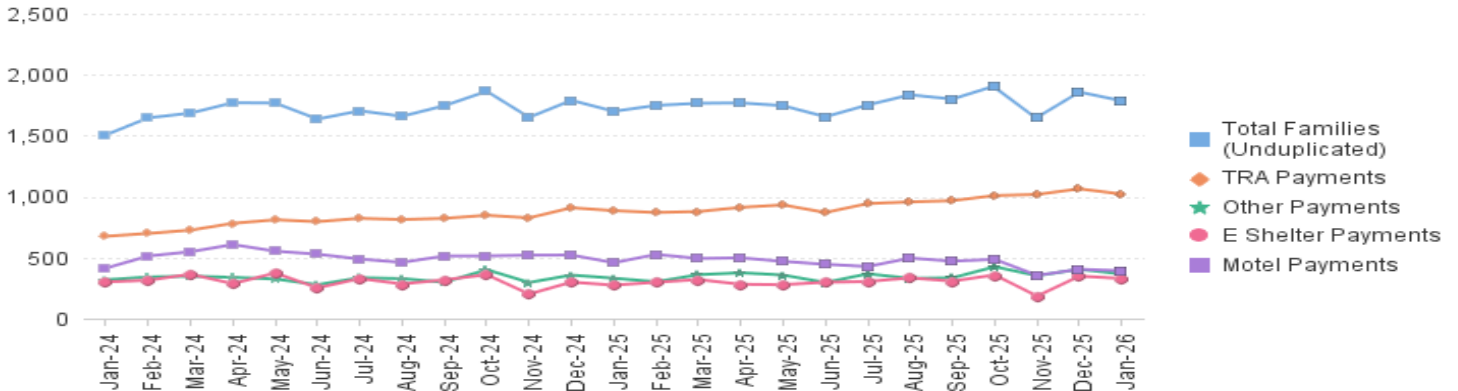
Effective July 2013 this data query source was converted to the SDW.

* Age 60+ and People with a disability columns are independent subsets of total persons. An individual might appear in both columns

TABLE 8 : EMERGENCY ASSISTANCE (STATEWIDE) TOTAL NUMBER OF ELIGIBLE FAMILIES RECEIVING EMERGENCY ASSISTANCE PAYMENTS JANUARY 2024 THROUGH JANUARY 2026 - STATEWIDE

		Total WFNJ/EA Families (Undupl)		Temp Rent Asst. Payments (Undupl)		Motel Housing Payments (Undupl)		Shelter/Transitional Housing Payments (Undupl)		Other WFNJ/EA Payments (Undupl)	
			% CHNG (1 YR)		% CHNG (1 YR)		% CHNG (1 YR)		% CHNG (1 YR)		% CHNG (1 YR)
2024	JAN	1,506	20.5%	675	19.7%	413	33.2%	301	0.7%	318	42.0%
	FEB	1,646	27.5%	698	27.1%	513	59.3%	314	-11.5%	341	54.3%
	MAR	1,685	15.3%	725	23.9%	548	30.2%	364	-7.6%	348	24.7%
	APR	1,770	46.8%	781	37.5%	607	110.0%	286	4.4%	338	69.8%
	MAY	1,768	27.2%	810	33.7%	553	44.8%	374	11.0%	325	32.7%
	JUN	1,636	10.9%	795	26.8%	528	20.8%	252	-31.1%	278	14.4%
	JUL	1,704	17.6%	822	34.3%	488	14.0%	328	-2.4%	335	26.9%
	AUG	1,659	20.7%	812	29.3%	461	21.0%	284	7.2%	328	13.1%
	SEP	1,746	18.2%	822	31.7%	513	32.9%	318	-13.6%	298	1.4%
	OCT	1,864	24.7%	847	30.5%	514	24.2%	360	5.9%	401	43.7%
	NOV	1,650	12.7%	826	29.1%	520	36.8%	201	-35.8%	296	-1.7%
	DEC	1,790	23.6%	909	42.5%	521	12.0%	299	20.1%	357	36.3%
2024 Average		1,702		794		515		307		330	
2025	JAN	1,700	12.9%	885	31.1%	458	10.9%	274	-9.0%	331	4.1%
	FEB	1,748	6.2%	870	24.6%	526	2.5%	298	-5.1%	302	-11.4%
	MAR	1,766	4.8%	878	21.1%	493	-10.0%	320	-12.1%	360	3.4%
	APR	1,769	-0.1%	912	16.8%	498	-18.0%	281	-1.7%	376	11.2%
	MAY	1,746	-1.2%	932	15.1%	469	-15.2%	278	-25.7%	357	9.8%
	JUN	1,655	1.2%	870	9.4%	445	-15.7%	298	18.3%	296	6.5%
	JUL	1,752	2.8%	943	14.7%	427	-12.5%	304	-7.3%	367	9.6%
	AUG	1,835	10.6%	957	17.9%	496	7.6%	334	17.6%	330	0.6%
	SEP	1,800	3.1%	967	17.6%	471	-8.2%	307	-3.5%	334	12.1%
	OCT	1,908	2.4%	1,009	19.1%	486	-5.4%	358	-0.6%	425	6.0%
	NOV	1,650	0.0%	1,018	23.2%	354	-31.9%	184	-8.5%	352	18.9%
	DEC	1,858	3.8%	1,064	17.1%	405	-22.3%	348	16.4%	404	13.2%
2025 Average		1,766		942		461		299		353	
2026	JAN	1,786	5.1%	1,021	15.4%	392	-14.4%	329	20.1%	366	10.6%
2026 Average To Date		1,786		1,021		392		329		366	

NJ STATEWIDE Families Receiving Emergency Assistance JANUARY 2024 THROUGH JANUARY 2026



* Effective Feb '11 Transitional Housing Payments were removed from 'Other EA Payments' and added to 'Shelter Payments'.

TABLE 9 : EMERGENCY ASSISTANCE (BY COUNTY) TOTAL NUMBER OF ELIGIBLE FAMILIES RECEIVING EMERGENCY ASSISTANCE PAYMENTS BY COUNTY (UNDUPLICATED CASES) FOR JANUARY 2026

County	TOTAL WFNJ/EA Families (Undupl)	% CHNG From JAN 25	Temp Rent Asst. Payments (Undupl)	Motel Housing Payments (Undupl)	Shelter/Transitional Housing Payments (Undupl)	Other WFNJ/EA Payments (Undupl)	SSI Receipts Receiving EA **
ATLANTIC	96	77.8% Δ	69	25	1	21	67
BERGEN	39	-2.5%	24	2	6	10	15
BURLINGTON	159	-20.5%	6	86	65	10	10
CAMDEN	52	67.7%	22	21	9	4	4
CAPE MAY	28	-9.7%	12	19	0	3	28
CUMBERLAND	5	-44.4% *	0	0	5	1	0
ESSEX	133	22.0%	60	0	73	15	28
GLOUCESTER	21	-40.0% *	1	4	6	16	2
HUDSON	434	21.2%	351	55	49	81	203
HUNTERDON	3	0%	2	1	0	0	3
MERCER	181	1.1%	125	32	4	48	76
MIDDLESEX	118	6.3%	70	38	16	31	66
MONMOUTH	57	1,325.0% Δ	7	24	27	7	20
MORRIS	21	-30.0% *	11	7	2	4	22
OCEAN	68	21.4%	42	20	0	31	23
PASSAIC	170	-19.8%	135	6	20	23	28
SALEM	8	700.0% Δ	2	3	1	2	7
SOMERSET	89	-8.2%	46	33	7	28	67
SUSSEX	3	0%	0	1	1	1	1
UNION	85	-29.2%	26	12	37	26	17
WARREN	16	-5.9%	10	3	0	4	4
NJ Total	1,786	5.1%	1,021	392	329	366	691

Δ=higher caseload % change

*=lower caseload % change

** SSI-EA includes pay codes 22 and 24, data is derived from NJ Division of Family Development FAMIS Report #FM430-03A

WFNJ/EA data is derived from NJ MMIS Shared Data Warehouse.

Effective July 2013 this data query source was converted to the SDW.

Number WFNJ Families Receiving EA by County JANUARY 2026

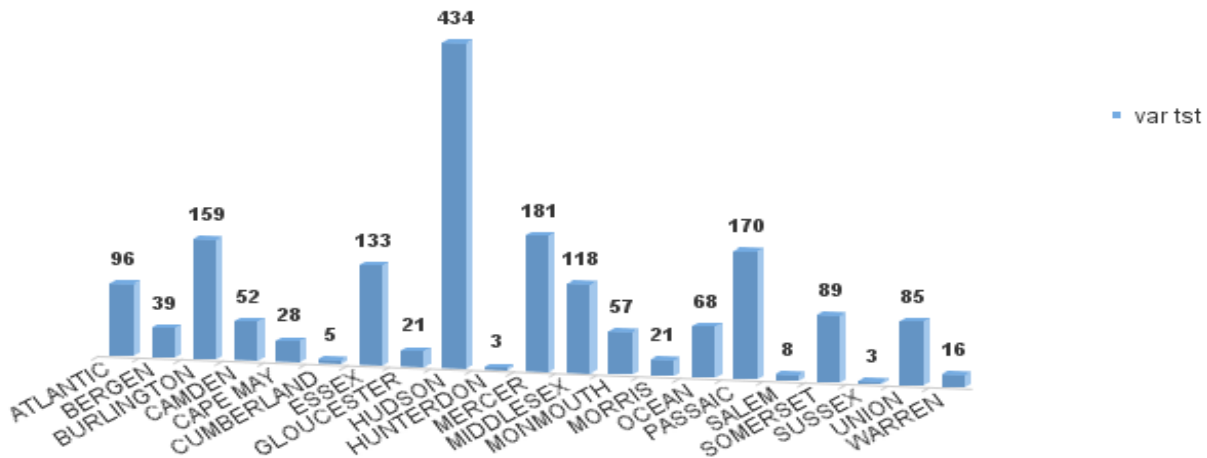
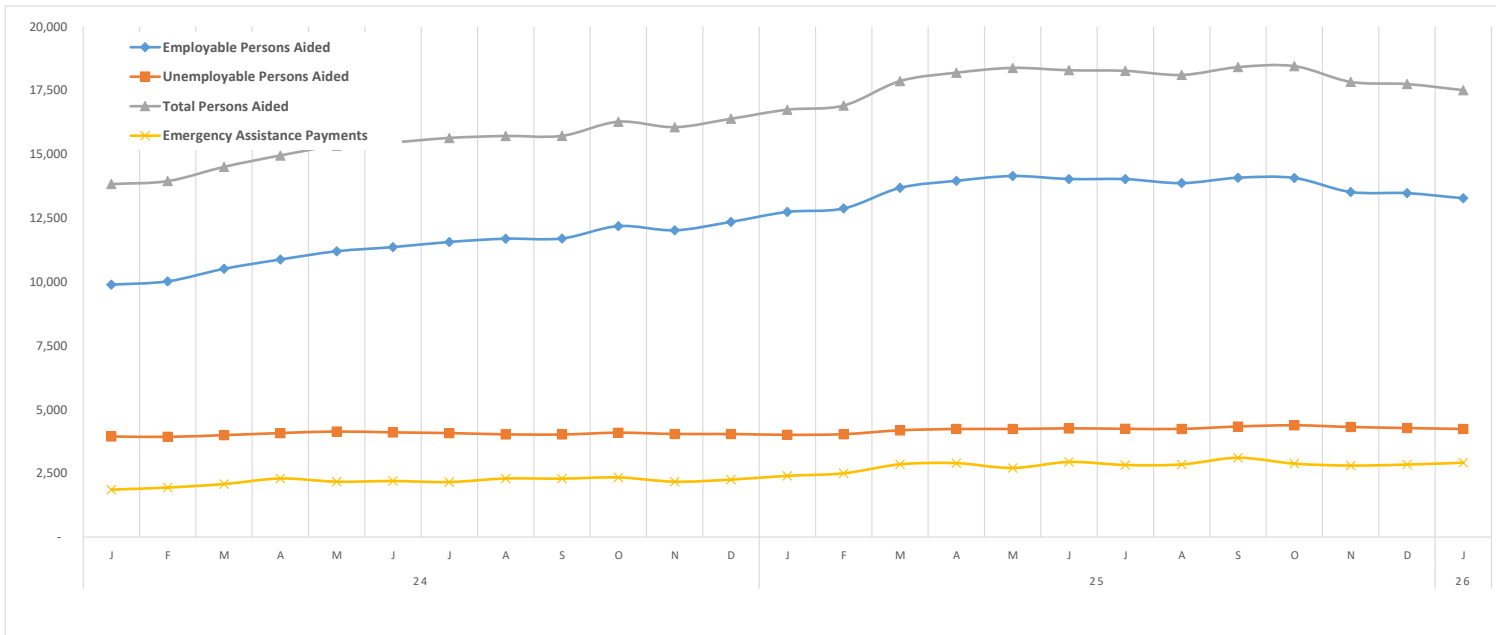


TABLE 10: GENERAL ASSISTANCE PROGRAM
NUMBER OF EMPLOYABLE AND UNEMPLOYABLE RECIPIENTS AND EMERGENCY ASSISTANCE PAYMENTS - STATEWIDE
JANUARY 2024 THROUGH JANUARY 2026

	Total Cases						Emergency Assistance Cases			
	Employable	% Chng (1 Yr)	Unemployable	% Chng (1 Yr)	Total	% Chng (1 Yr)	Temporary Rental Assistance	Other GA-EA	Total	% Chng (1 Yr)
2024										
JAN	9,888	46.3%	3,942	14.4%	13,830	35.5%	612	1,247	1,859	9.2%
FEB	10,019	52.7%	3,927	15.2%	13,946	39.9%	513	1,428	1,941	11.6%
MAR	10,510	59.1%	3,993	12.3%	14,503	42.7%	629	1,449	2,078	10.0%
APR	10,875	65.6%	4,075	14.0%	14,950	47.4%	659	1,636	2,295	28.9%
MAY	11,197	70.5%	4,136	12.2%	15,333	49.5%	680	1,490	2,170	14.2%
JUN	11,360	71.4%	4,101	8.4%	15,461	48.5%	696	1,501	2,197	22.9%
JUL	11,562	65.9%	4,075	8.6%	15,637	45.8%	662	1,494	2,156	26.7%
AUG	11,689	49.1%	4,025	5.4%	15,714	34.8%	749	1,545	2,294	22.7%
SEP	11,699	41.3%	4,019	7.0%	15,718	30.6%	761	1,529	2,290	41.8%
OCT	12,182	35.4%	4,090	6.8%	16,272	26.8%	766	1,571	2,337	30.4%
NOV	12,019	27.8%	4,039	5.8%	16,058	21.4%	784	1,387	2,171	26.7%
DEC	12,349	27.2%	4,039	3.4%	16,388	20.3%	766	1,486	2,252	20.4%
2024 AVERAGE	11,279		4,038		15,318		690	1,480	2,170	
2025										
JAN	12,738	28.8%	4,006	1.6%	16,744	21.1%	814	1,586	2,400	29.1%
FEB	12,874	28.5%	4,032	2.7%	16,906	21.2%	861	1,637	2,498	28.7%
MAR	13,681	30.2%	4,183	4.8%	17,864	23.2%	883	1,968	2,851	37.2%
APR	13,957	28.3%	4,234	3.9%	18,191	21.7%	931	1,965	2,896	26.2%
MAY	14,144	26.3%	4,236	2.4%	18,380	19.9%	949	1,759	2,708	24.8%
JUN	14,028	23.5%	4,260	3.9%	18,288	18.3%	1,007	1,936	2,943	34.0%
JUL	14,023	21.3%	4,242	4.1%	18,265	16.8%	944	1,880	2,824	31.0%
AUG	13,866	18.6%	4,238	5.3%	18,104	15.2%	1,002	1,844	2,846	24.1%
SEP	14,077	20.3%	4,333	7.8%	18,410	17.1%	1,031	2,076	3,107	35.7%
OCT	14,068	15.5%	4,381	7.1%	18,449	13.4%	1,062	1,815	2,877	23.1%
NOV	13,519	12.5%	4,314	6.8%	17,833	11.1%	1,024	1,779	2,803	29.1%
DEC	13,474	9.1%	4,272	5.8%	17,746	8.3%	1,134	1,706	2,840	26.1%
2025 AVERAGE	13,704		4,228		17,932		970	1,829	2,799	
2026										
JAN	13,273	4.2%	4,235	5.7%	17,508	4.6%	1,105	1,810	2,915	21.5%
2026 AVERAGE TO DATE	13,273		4,235		17,508		1,105	1,810	2,915	

NEW JERSEY STATEWIDE GENERAL ASSISTANCE CASES
JANUARY 2024 THROUGH JANUARY 2026



Source: NJ Division of Family Development, GA Fiscal Unit

TABLE 11: EMPLOYABLE AND UNEMPLOYABLE CASES AND EMERGENCY ASSISTANCE CASES RECEIVING PAYMENTS BY COUNTY JANUARY 2026

PROGRAM	Total Cases						Emergency Assistance Cases			
	Employable	% Chng (1 Yr)	Unemployable	% Chng (1 Yr)	Total	% Chng (1 Yr)	Temporary Rental Assistance	Other GA-EA	Total	% Chng (1 Yr)
ATLANTIC	1,032	-4.4%	139	-11.5%	1,171	-5.3%	149	51	200	10.5%
BERGEN	274	-34.4%	208	-6.7%	482	-24.8% *	75	20	95	11.8%
BURLINGTON	714	23.5%	301	58.4%	1,015	32.2% Δ	7	365	372	57.0%
CAMDEN	1,927	7.9%	451	-9.6%	2,378	4.1%	31	136	167	16.8%
CAPE MAY	225	-9.3%	76	35.7%	301	-1.0%	23	141	164	45.1%
CUMBERLAND	515	17.6%	201	-1.0%	716	11.7%	4	3	7	-70.8% *
ESSEX	1,638	22.1%	310	11.5%	1,948	20.3% Δ	85	140	225	139.4% Δ
GLOUCESTER	281	-9.4%	125	-3.8%	406	-7.7%	2	26	28	-36.4%
HUDSON	2,159	16.5%	285	-6.3%	2,444	13.3%	297	201	498	35.7%
HUNTERDON	57	35.7%	35	-28.6%	92	1.1%	4	8	12	-14.3%
MERCER	685	-1.6%	317	13.6%	1,002	2.8%	52	85	137	11.4%
MIDDLESEX	499	-0.4%	326	0.3%	825	-0.1%	68	112	180	1.7%
MONMOUTH	363	-19.7%	265	7.7%	628	-10.0%	3	50	53	-43.6% *
MORRIS	224	-14.2%	148	-6.3%	372	-11.2% *	36	46	82	-13.7%
OCEAN	362	-14.8%	229	5.5%	591	-7.9%	25	54	79	-18.6%
PASSAIC	825	-3.7%	243	26.6%	1,068	1.8%	99	58	157	20.8%
SALEM	225	18.4%	69	16.9%	294	18.1%	7	15	22	340.0% Δ
SOMERSET	332	-1.5%	140	55.6%	472	10.5%	51	115	166	16.9%
SUSSEX	23	-37.8%	16	-38.5%	39	-38.1% *	0	9	9	-40.0% *
UNION	799	-1.0%	262	6.1%	1,061	0.7%	65	123	188	0.5%
WARREN	114	40.7%	89	14.1%	203	27.7% Δ	22	52	74	124.2% Δ
NJ TOTAL	13,273	4.2%	4,235	5.7%	17,508	4.6%	1,105	1,810	2,915	21.5%

Δ = ↑ Caseload %

* = ↓ Caseload %

**TABLE 12:
OFFICE OF
CHILD SUPPORT
SERVICES**

**OFFICE OF CHILD SUPPORT SERVICES
QUARTERLY PERFORMANCE REPORT
STATE SUMMARY
TITLE IV-D SOURCE COLLECTION REPORT**

Comparison of Quarter- (FFY -1 vs. FFY)

COLLECTION SOURCE	TOTAL 10/1/2024 - 12/31/2024	% OF TOTAL COLLECTIONS	TOTAL 10/1/2025 - 12/31/2025	% OF TOTAL COLLECTIONS	DOLLAR CHANGE	% CHANGE
FEDERAL TAX	\$1,464,325	0.57%	\$849,811	0.34%	\$ (614,514)	-41.97%
STATE TAX	\$690,300	0.27%	\$633,301	0.25%	\$ (56,999)	-8.26%
UIB	\$6,152,302	2.39%	\$5,972,174	2.37%	\$ (180,128)	-2.93%
INC WITHHOLD	\$181,797,360	70.50%	\$179,612,406	71.42%	\$ (2,184,954)	-1.20%
FROM OTHER STATES	\$9,749,754	3.78%	\$9,728,077	3.87%	\$ (21,677)	-0.22%
ADMIN ENFORCEMENT	\$4,942,459	1.92%	\$4,569,998	0.02%	\$ (372,461)	-7.54%
OTHER	\$53,082,608	20.58%	\$50,111,446	19.93%	\$ (2,971,162)	-5.60%
TOTAL COLLECTIONS*	\$257,879,108	100%	\$251,477,213	100%	\$ (6,401,895)	-2.48%
DISBURSED COLLECTIONS**	\$220,486,546		\$216,115,109		\$ (4,371,437)	-1.98%

* Includes collections on both current support and arrears.

** Includes collections on both current support and arrears; also includes money sent to other states.

SOURCE: NJKiDS (Based on Federal Quarterly Report of Collections - OCSE-34A except Disbursed Collections)

Disbursed Collections obtained from Federal Data Report - OCSE-157, which is reported annually to Congress and used in the calculation of incentive dollars earned by each state.

**TABLE 13:
OFFICE OF
CHILD SUPPORT
SERVICES**

**OFFICE OF CHILD SUPPORT SERVICES
STATE SUMMARY
TITLE IV-D PATERNITY ESTABLISHMENT REPORT
Comparison of January (FFY -1 vs. FFY)**

County	JANUARY 2025			JANUARY 2026			Increase or Decrease (-) from FFY -1 to FFY
	Total Children Born Out of Wedlock*	Number of Paternities Established	Percent of Paternities Established	Total Children Born Out of Wedlock*	Number of Paternities Established	Percent of Paternities Established	
Atlantic	4,095	4,108	100.3%	3,705	3,715	100.3%	0.0%
Bergen	2,142	2,099	98.0%	1,922	1,893	98.5%	0.5%
Burlington	3,139	3,064	97.6%	2,847	2,782	97.7%	0.1%
Camden	10,711	10,495	98.0%	9,804	9,591	97.8%	-0.2%
Cape May	735	729	99.2%	663	660	99.5%	0.4%
Cumberland	4,660	4,630	99.4%	4,162	4,143	99.5%	0.2%
Essex	16,057	15,377	95.8%	14,959	14,315	95.7%	-0.1%
Gloucester	2,785	2,783	99.9%	2,436	2,431	99.8%	-0.1%
Hudson	6,500	6,352	97.7%	5,892	5,767	97.9%	0.2%
Hunterdon	118	120	101.7%	95	98	103.2%	1.5%
Mercer	4,278	4,184	97.8%	3,858	3,759	97.4%	-0.4%
Middlesex	4,127	4,042	97.9%	3,675	3,607	98.1%	0.2%
Monmouth	2,893	2,832	97.9%	2,549	2,486	97.5%	-0.4%
Morris	709	699	98.6%	611	599	98.0%	-0.6%
Ocean	3,155	3,114	98.7%	2,729	2,686	98.4%	-0.3%
Passaic	6,186	6,067	98.1%	5,641	5,522	97.9%	-0.2%
Salem	2,176	2,092	96.1%	2,001	1,957	97.8%	1.7%
Somerset	761	744	97.8%	685	668	97.5%	-0.2%
Sussex	349	349	100.0%	303	307	101.3%	1.3%
Union	7,729	7,418	96.0%	7,197	6,946	96.5%	0.5%
Warren	419	422	100.7%	344	341	99.1%	-1.6%
NJ TOTALS	83,724	81,720	97.6%	76,078	74,273	97.6%	0.0%

SOURCE: NJKiDS (Based on Federal Performance Measures - OCSE-157)

* Information on Out of Wedlock Births obtained from NJ Bureau of Vital Statistics

**TABLE 14:
OFFICE OF
CHILD SUPPORT
SERVICES**

**OFFICE OF CHILD SUPPORT SERVICES
STATE SUMMARY
TITLE IV-D REPORT OF CASES WITH ORDERS
Comparison of January (FFY -1 vs. FFY)**

County	JANUARY 2025			JANUARY 2026			Increase or Decrease (-) from FFY -1 to FFY
	Total Cases	Cases with Orders	% of Cases with Orders	Total Cases	Cases with Orders	% of Cases with Orders	
Atlantic	8,754	8,036	91.8%	8,406	7,667	91.2%	-0.6%
Bergen	9,326	9,041	96.9%	8,987	8,724	97.1%	0.1%
Burlington	10,428	9,325	89.4%	10,153	8,947	88.1%	-1.3%
Camden	22,349	20,769	92.9%	21,088	19,473	92.3%	-0.6%
Cape May	2,223	2,113	95.1%	2,125	1,993	93.8%	-1.3%
Cumberland	9,329	8,861	95.0%	8,524	8,141	95.5%	0.5%
Essex	31,857	26,961	84.6%	30,926	26,430	85.5%	0.8%
Gloucester	7,831	7,361	94.0%	7,412	6,950	93.8%	-0.2%
Hudson	15,804	14,002	88.6%	15,104	13,429	88.9%	0.3%
Hunterdon	987	945	95.7%	933	892	95.6%	-0.1%
Mercer	10,246	9,096	88.8%	9,811	8,712	88.8%	0.0%
Middlesex	13,726	12,535	91.3%	13,286	11,975	90.1%	-1.2%
Monmouth	9,366	8,712	93.0%	8,769	8,059	91.9%	-1.1%
Morris	4,428	4,272	96.5%	4,266	4,130	96.8%	0.3%
Ocean	10,916	10,448	95.7%	9,983	9,541	95.6%	-0.1%
Passaic	14,388	12,973	90.2%	14,056	12,533	89.2%	-1.0%
Salem	3,320	3,103	93.5%	3,117	2,915	93.5%	0.1%
Somerset	3,375	3,074	91.1%	3,249	2,959	91.1%	0.0%
Sussex	2,101	2,048	97.5%	2,037	1,989	97.6%	0.2%
Union	14,381	13,632	94.8%	13,691	13,034	95.2%	0.4%
Warren	1,901	1,826	96.1%	1,814	1,713	94.4%	-1.6%
NJ TOTALS	207,036	189,133	91.4%	197,737	180,206	91.1%	-0.2%

SOURCE: NJKiDS (Based on Federal Performance Measures - OCSE-157)

**TABLE 15:
OFFICE OF
CHILD SUPPORT
SERVICES**

**OFFICE OF CHILD SUPPORT SERVICES
STATE SUMMARY
TITLE IV-D COLLECTIONS ON CURRENT SUPPORT
Comparison of January (FFY -1 vs. FFY)**

County	JANUARY 2025			JANUARY 2026			Increase or Decrease (-) from FFY -1 to FFY
	Total Current Support Due	Total Current Support Distributed	Total Collection Rate	Total Current Support Due	Total Current Support Distributed	Total Collection Rate	
Atlantic	\$3,411,516	\$2,094,586	61.4%	\$3,285,441	\$2,033,921	61.9%	0.5%
Bergen	\$7,098,975	\$5,093,362	71.7%	\$6,821,946	\$4,863,046	71.3%	-0.5%
Burlington	\$4,912,353	\$3,185,906	64.9%	\$4,715,908	\$3,122,391	66.2%	1.4%
Camden	\$7,207,955	\$3,995,180	55.4%	\$6,871,859	\$3,844,741	55.9%	0.5%
Cape May	\$945,912	\$623,426	65.9%	\$890,387	\$605,501	68.0%	2.1%
Cumberland	\$2,783,447	\$1,536,418	55.2%	\$2,622,139	\$1,477,277	56.3%	1.1%
Essex	\$9,758,404	\$5,520,782	56.6%	\$9,621,553	\$5,367,708	55.8%	-0.8%
Gloucester	\$3,562,218	\$2,288,452	64.2%	\$3,364,404	\$2,181,911	64.9%	0.6%
Hudson	\$6,792,809	\$4,191,784	61.7%	\$6,592,105	\$4,040,977	61.3%	-0.4%
Hunterdon	\$882,742	\$710,624	80.5%	\$855,478	\$696,586	81.4%	0.9%
Mercer	\$3,808,440	\$2,274,182	59.7%	\$3,748,130	\$2,268,891	60.5%	0.8%
Middlesex	\$6,766,578	\$4,466,511	66.0%	\$6,593,037	\$4,349,931	66.0%	0.0%
Monmouth	\$5,426,985	\$3,723,152	68.6%	\$4,900,599	\$3,452,817	70.5%	1.9%
Morris	\$3,601,305	\$2,480,183	68.9%	\$3,442,222	\$2,402,223	69.8%	0.9%
Ocean	\$5,686,952	\$3,860,799	67.9%	\$5,333,209	\$3,556,228	66.7%	-1.2%
Passaic	\$5,939,128	\$3,567,133	60.1%	\$5,763,687	\$3,412,509	59.2%	-0.9%
Salem	\$1,019,161	\$572,824	56.2%	\$967,747	\$552,476	57.1%	0.9%
Somerset	\$2,332,439	\$1,844,824	79.1%	\$2,221,779	\$1,755,765	79.0%	-0.1%
Sussex	\$1,448,355	\$1,060,864	73.2%	\$1,376,887	\$995,824	72.3%	-0.9%
Union	\$6,616,812	\$4,172,038	63.1%	\$6,278,317	\$3,988,565	63.5%	0.5%
Warren	\$1,048,821	\$793,061	75.6%	\$1,012,068	\$757,847	74.9%	-0.7%
NJ TOTALS	\$91,051,306	\$58,056,090	63.8%	\$87,278,901	\$55,727,136	63.8%	0.1%

SOURCE: NJKiDS (Based on Federal Performance Measures - OCSE-157)

**TABLE 16:
OFFICE OF
CHILD SUPPORT
SERVICES**

**OFFICE OF CHILD SUPPORT SERVICES
STATE SUMMARY
TITLE IV-D CASES ARREARS COLLECTION REPORT**

Comparison of January (FFY -1 vs. FFY)

County	JANUARY 2025			JANUARY 2026			Increase or Decrease (-) from FFY -1 to FFY
	Total Cases with Arrears	Total Amount Collected	Average Arrears Collection per Case	Total Cases with Arrears	Total Amount Collected	Average Arrears Collection per Case	
Atlantic	5,490	\$500,909	\$91.24	5,281	\$438,728	\$83.08	-\$8.16
Bergen	6,116	\$1,389,531	\$227.20	5,939	\$822,105	\$138.42	-\$88.77
Burlington	6,226	\$998,947	\$160.45	5,996	\$715,017	\$119.25	-\$41.20
Camden	12,678	\$1,349,315	\$106.43	12,061	\$1,087,645	\$90.18	-\$16.25
Cape May	1,467	\$159,008	\$108.39	1,393	\$114,178	\$81.97	-\$26.42
Cumberland	5,632	\$499,315	\$88.66	5,187	\$447,898	\$86.35	-\$2.31
Essex	16,414	\$1,935,893	\$117.94	15,775	\$1,626,198	\$103.09	-\$14.85
Gloucester	4,913	\$551,589	\$112.27	4,609	\$478,014	\$103.71	-\$8.56
Hudson	9,652	\$1,266,256	\$131.19	9,145	\$860,928	\$94.14	-\$37.05
Hunterdon	597	\$96,651	\$161.89	566	\$87,480	\$154.56	-\$7.34
Mercer	6,306	\$740,122	\$117.37	6,032	\$548,671	\$90.96	-\$26.41
Middlesex	8,556	\$1,308,785	\$152.97	8,217	\$1,103,293	\$134.27	-\$18.70
Monmouth	5,811	\$868,350	\$149.43	5,363	\$753,840	\$140.56	-\$8.87
Morris	2,947	\$384,611	\$130.51	2,832	\$391,845	\$138.36	\$7.85
Ocean	6,754	\$860,369	\$127.39	6,250	\$760,505	\$121.68	-\$5.71
Passaic	8,869	\$1,029,795	\$116.11	8,607	\$1,020,421	\$118.56	\$2.45
Salem	1,873	\$140,144	\$74.82	1,817	\$119,809	\$65.94	-\$8.89
Somerset	2,074	\$311,015	\$149.96	2,009	\$316,464	\$157.52	\$7.56
Sussex	1,302	\$181,269	\$139.22	1,292	\$122,303	\$94.66	-\$44.56
Union	8,994	\$1,165,018	\$129.53	8,586	\$1,023,739	\$119.23	-\$10.30
Warren	1,260	\$208,674	\$165.61	1,170	\$121,431	\$103.79	-\$61.83
NJ TOTALS	123,931	\$15,945,566	\$128.66	118,127	\$12,960,512	\$109.72	-\$18.95

SOURCE: OCSE-157 Child Support Enforcement Annual Data Report

Table 17**WORK FIRST NEW JERSEY STATISTICAL SUMMARY****WFNJ****JANUARY 2026**

COUNTY	EMPLOYMENT DIRECTED ACTIVITIES			EMPLOYED OPEN (WFNJ RECIPIENT)	SUPPORT SERVICES ON ACTIVE CASE		CLOSED FOR EMPLOYMENT THIS MONTH	POST ASSISTANCE CHILD CARE
	CWEP	ALL OTHER TRAINING	JOB SEARCH		CHILD CARE	TRAINING REL. EXPENSES		
ATLANTIC	0	53	0	28	46	74	5	11
BERGEN	7	9	50	5	44	7	5	20
BURLINGTON	104	8	73	16	54	20	8	8
CAMDEN	40	129	13	66	157	0	9	16
CAPE MAY	3	5	1	2	5	6	1	2
CUMBERLAND	3	35	65	10	31	53	4	6
ESSEX	9	139	15	71	179	134	20	32
GLOUCESTER	8	5	2	12	24	18	3	9
HUDSON	5	255	37	87	200	65	27	33
HUNTERDON	2	0	0	0	0	0	0	1
MERCER	59	200	8	42	158	14	12	30
MIDDLESEX	0	58	106	30	97	1	7	8
MONMOUTH	1	12	16	10	46	8	2	13
MORRIS	5	10	0	4	5	3	2	1
OCEAN	0	151	0	5	30	9	3	11
PASSAIC	139	105	0	25	116	64	10	3
SALEM	0	12	0	6	11	7	3	1
SOMERSET	63	36	32	9	45	13	1	2
SUSSEX	0	0	0	1	4	0	0	0
UNION	52	38	0	15	61	23	5	0
WARREN	1	8	2	2	7	0	0	1
STATE TOTAL	501	1268	420	446	1320	519	127	208

Data is derived from NJ Division of Family Development's FAMIS Reports RM064-01 & RM703-51, AdHoc Reports 5549 & 5598 and SDW Report WR00022WZ_CC

**DIVISION OF FAMILY DEVELOPMENT CURRENT PROGRAM STATISTICS
JANUARY 2026**

ACRONYMS

EMERGENCY ASSISTANCE (EA) - Payments to those eligible for WFNJ/TANF or WFNJ/GA, authorized during the 30 consecutive days immediately following the emergency (defined as a substantial loss of shelter, food, clothing, or household furnishings by fire, flood or other similar disaster) or if eligible individual or family is in an imminent or actual state of homelessness.

NJ SNAP - Formerly the Food Stamp Program, now known as NJ SNAP (NJ Supplemental Nutrition Assistance Program) authorized by Congress as a nutritional supplement program to provide low income households with more food of greater variety and better nutrition. Program eligibility is based on household income, resources, and expenses for medical, shelter, and dependent care. CWA staff refers certain recipients to the New Jersey Department of Labor for participation in the Food Stamp Employment and Training Program.

FAMIS: Family Assistance Management Information System

GAAS: General Assistance Automated System

NJKiDS: New Jersey Kids Deserve Support (Child Support Information Management System)

NJ MMIS SHARED DATA WAREHOUSE: The Shared Data Warehouse (SDW) is the repository for New Jersey's DFD and Medicaid data. Since 2003, OptumInsight has administered the SDW and provided access to the data through a reporting tool known as Business Objects.

OMEGA: Online Management of Economic Goal Achievement

SSI-EA: Supplemental Security Income-Emergency Assistance

WFNJ: Work First New Jersey - Fully implemented July 1, 1997, this is New Jersey's welfare reform program which responds to the requirements of the Federal Personal Responsibility and Work Opportunity Reconciliation Act (**PRWORA**) of 1996. PRWORA established Temporary Assistance for Needy Families (**TANF**) as the replacement for AFDC cash assistance. WFNJ includes two segments, **WFNJ/TANF** for families with children, and **WFNJ/GA** (General Assistance) for single adults and couples without dependent children. WFNJ emphasizes achieving self-sufficiency and limits lifetime receipt of financial assistance to a total of five years.

**DIVISION OF FAMILY DEVELOPMENT CURRENT PROGRAM STATISTICS
JANUARY 2026**

EXPLANATORY NOTES

The Department of Human Services Division of Family Development provides basic income and an opportunity to achieve self-sufficiency for individuals and families served by the Division's programs. The Division provides leadership, direction and supervision to those public agencies responsible for administering those programs and plans for and develops policies to promote self-sufficiency.

WFNJ STATISTICAL SUMMARY (TABLE 17)

Employment Directed Activities (EDA) - From Activities Summary Report (OMEGA report # RM064). Unduplicated count of persons participating in Community Work Experience Program (CWEP), All Other Training, or Job Search.

Number of Persons Employed This Month, Still Receiving TANF - Individuals with open "empl" activity on OMEGA. Ad hoc report.

Participants Receiving Child Care Services - From Issuance Disbursement Summary (OMEGA report # RM703). Total number of active participants who show receipt of Child Care.

Number of Persons Closed on FAMIS Due to Employment - From FAMIS report #5549-RM-2

Post TANF and Receiving Child Care - Persons no longer in receipt of TANF but still receiving child care. From Share Data Warehouse Child Care case count based on Child Care payments (SDW report WR00022WZ_CC).