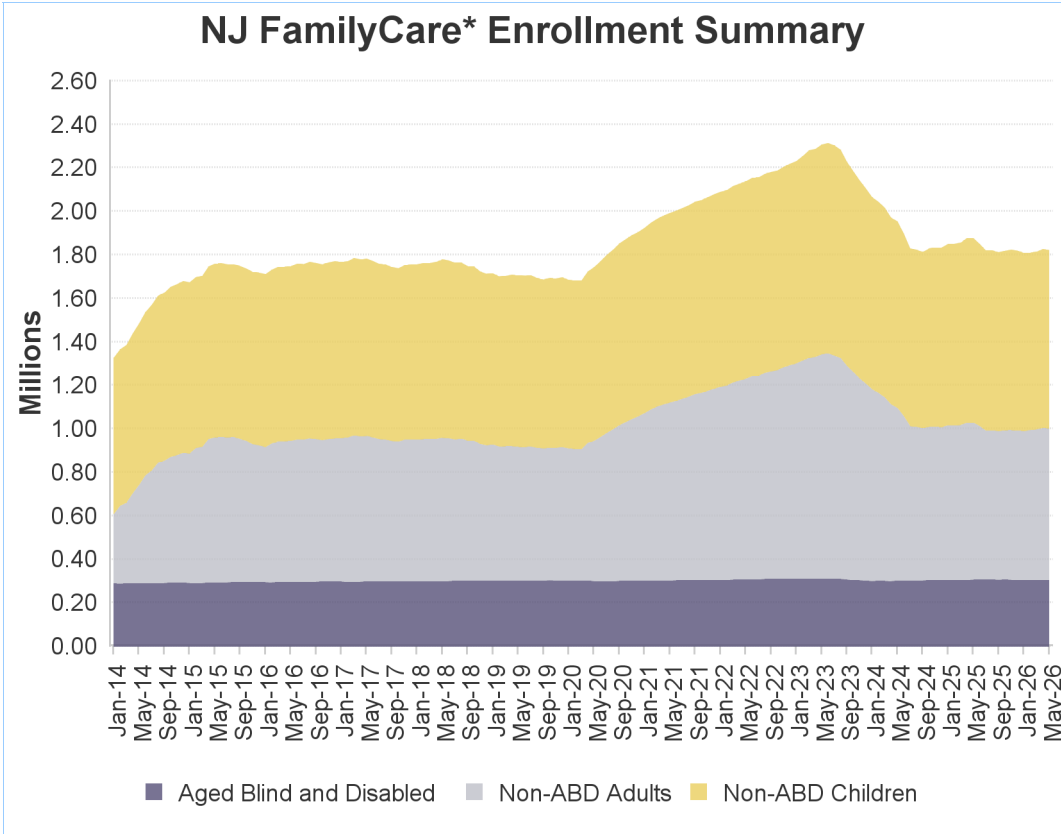


NJ FamilyCare* Enrollment Summary - May 2026			
Eligibility Category	Age < 21	Age > 20	Total
Aged	0	108,017	108,017
Blind	87	781	868
Disabled	32,118	164,951	197,069
Non-ABD Children	821,311	0	821,311
Non-ABD Adults	25,677	670,830	696,507
<b>Total</b>	<b>879,193</b>	<b>944,579</b>	<b>1,823,772</b>



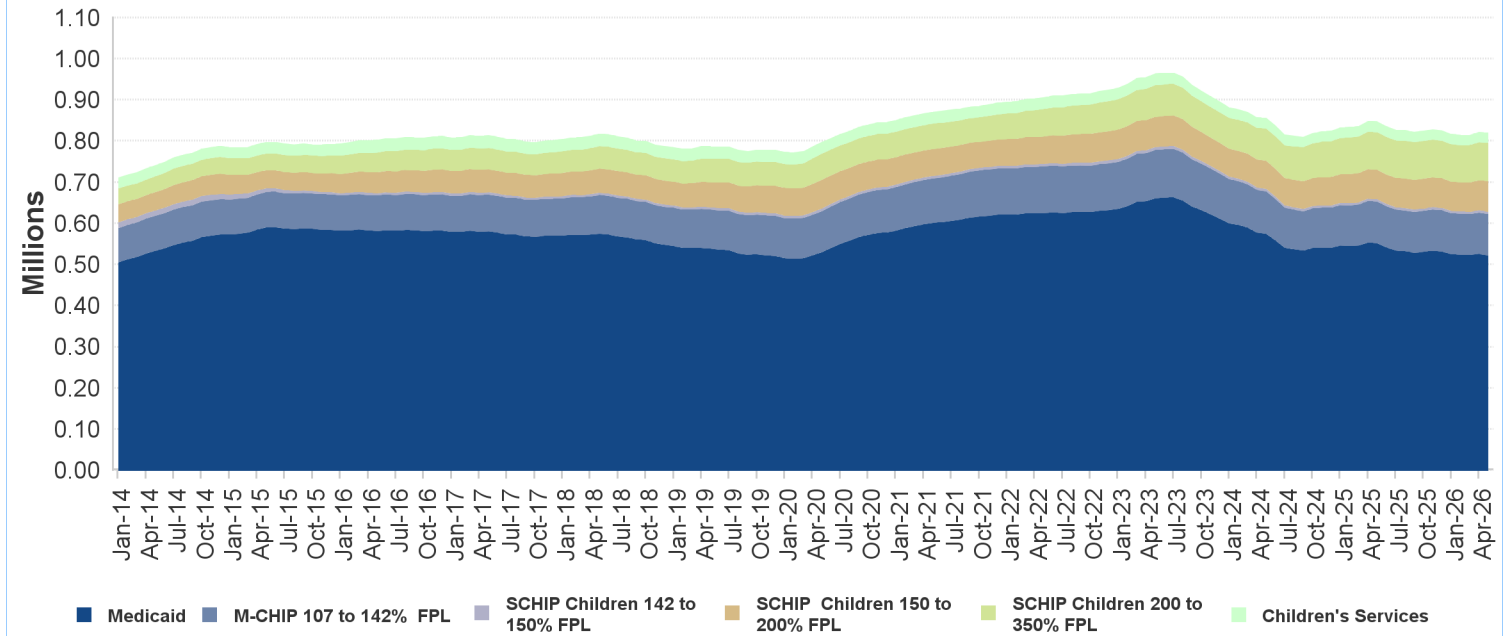
\* - NJ FamilyCare includes all individuals receiving public medical assistance through the Division of Medical Assistance and Health Services and includes those eligible for federal reimbursement through the Medicaid program and Children's Health Insurance Program established in the federal Social Security Act and those eligible for other public medical assistance programs established through various state laws.

## Non-ABD Children - May 2026

County	Medicaid	M-CHIP 107 to 142% FPL	SCHIP Children 142 to 150% FPL	SCHIP Children 150 to 200% FPL	SCHIP Children 200 to 350% FPL	Children's Services	Total
Atlantic	19,093	3,321	190	2,629	2,913	1,098	29,244
Bergen	29,388	6,250	399	5,210	7,408	1,943	50,598
Burlington	17,816	3,201	212	2,685	3,771	1,778	29,463
Camden	37,665	5,848	386	4,689	5,256	2,166	56,010
Cape May	4,123	841	49	570	808	306	6,697
Cumberland	16,094	3,072	173	1,932	1,952	712	23,935
Essex	71,391	11,674	615	7,525	7,980	2,284	101,469
Gloucester	12,887	2,128	112	1,631	2,283	1,120	20,161
Hudson	48,572	9,303	499	6,015	6,357	1,042	71,788
Hunterdon	2,552	456	32	412	659	318	4,429
Mercer	24,949	4,672	282	3,420	3,673	1,698	38,694
Middlesex	40,045	8,952	477	6,507	8,819	1,634	66,434
Monmouth	22,208	4,588	240	3,195	4,405	1,652	36,288
Morris	11,420	2,253	173	1,977	2,804	907	19,534
Ocean	59,723	12,381	713	9,895	15,499	1,694	99,905
Passaic	45,834	9,268	552	6,182	6,934	1,032	69,802
Salem	4,325	727	32	573	586	319	6,562
Somerset	9,330	2,097	131	1,739	2,291	780	16,368
Sussex	3,472	591	38	711	1,160	370	6,342
Union	37,602	8,050	501	5,843	6,473	1,182	59,651
Warren	4,548	773	38	651	946	338	7,294
Other	53	2	0	0	0	588	643
<b>Total</b>	<b>523,090</b>	<b>100,448</b>	<b>5,844</b>	<b>73,991</b>	<b>92,977</b>	<b>24,961</b>	<b>821,311</b>

*Includes children eligible through CHIPRA - 11,132*

### Non-ABD Children

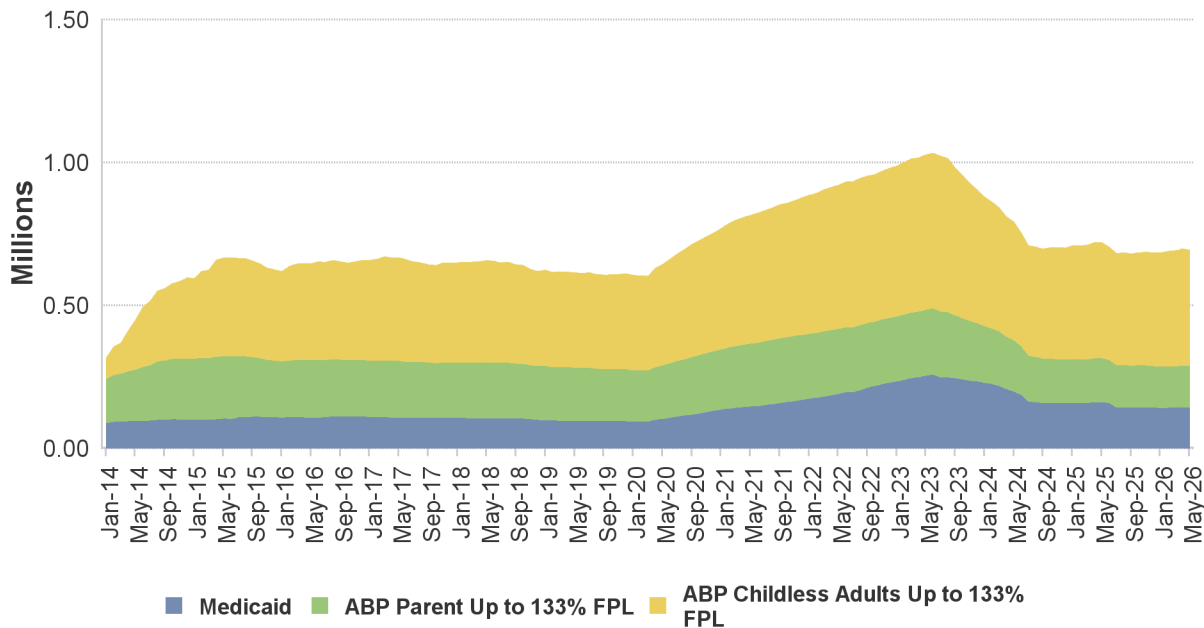


### Non-ABD Adults - May 2026

County	Medicaid *	ABP Parent Up to 133% FPL	ABP Childless Adults Up to 133% FPL	Total
Atlantic	5,366	6,164	17,117	28,647
Bergen	9,070	9,789	30,602	49,461
Burlington	5,830	4,864	17,288	27,982
Camden	12,256	10,610	34,014	56,880
Cape May	1,245	1,369	3,999	6,613
Cumberland	4,371	3,581	8,500	16,452
Essex	19,858	15,561	53,499	88,918
Gloucester	3,864	4,165	12,370	20,399
Hudson	13,957	14,611	41,102	69,670
Hunterdon	600	619	3,009	4,228
Mercer	6,116	5,074	16,418	27,608
Middlesex	11,298	11,852	35,030	58,180
Monmouth	5,861	5,610	20,887	32,358
Morris	3,294	3,090	12,350	18,734
Ocean	13,059	18,220	23,949	55,228
Passaic	12,813	14,322	32,535	59,670
Salem	1,334	1,119	2,914	5,367
Somerset	2,462	2,264	8,685	13,411
Sussex	1,145	1,255	3,895	6,295
Union	9,708	8,773	25,034	43,515
Warren	1,377	1,334	4,136	6,847
Other	5	7	32	44
<b>Total</b>	<b>144,889</b>	<b>144,253</b>	<b>407,365</b>	<b>696,507</b>

\* Includes pregnant women eligible through CHIPRA - 4,253

### Non-ABD Adults



### ABD Eligibles - May 2026

County	Aged	Blind	Disabled	Total
Atlantic	2,862	28	7,912	10,802
Bergen	13,121	44	10,917	24,082
Burlington	2,861	26	9,231	12,118
Camden	5,684	87	19,742	25,513
Cape May	888	2	2,295	3,185
Cumberland	1,742	26	7,811	9,579
Essex	11,083	141	26,706	37,930
Gloucester	1,584	22	7,197	8,803
Hudson	12,498	93	18,391	30,982
Hunterdon	672	8	1,703	2,383
Mercer	3,994	48	11,015	15,057
Middlesex	13,328	73	13,116	26,517
Monmouth	4,295	46	9,310	13,651
Morris	4,959	15	5,565	10,539
Ocean	4,189	36	10,410	14,635
Passaic	10,811	68	12,978	23,857
Salem	496	11	2,749	3,256
Somerset	4,097	17	4,267	8,381
Sussex	608	9	2,186	2,803
Union	7,426	59	11,303	18,788
Warren	817	9	2,214	3,040
Other	2	0	51	53
<b>Total</b>	<b>108,017</b>	<b>868</b>	<b>197,069</b>	<b>305,954</b>

*Includes 64,711 individuals in home and community-based waiver programs*

