

OSCAR

OSCAR – CALCS 2008

USER REFERENCE



State of New Jersey
Department of Labor and Workforce Development
Office of Special Compensation Funds

OSCAR – CALCS 2008

INTRODUCTION

OSCAR-CALCS is a product of the Office of Special Compensation Funds (OSCF) and part of its automated systems development effort entitled Office of Special Compensation Application Resource. OSCAR-CALCS was designed to address the most common date and arithmetic functions that arise during the course of a workers' compensation case and was intended for use by OSCF legal and other staff as well as the judicial staff within the Division of Workers' Compensation. Critical to its design and testing was the involvement and critical input of several Judges of Compensation. Their assistance is acknowledged and appreciated.

After a number of attorneys practicing before the Courts of the Division expressed interest in obtaining a copy of this software, it was decided to make copies available without cost to any interested party through the various vicinages of the Division. Once installed, please return the CD to the vicinage so that others may use it.

All users of OSCAR-CALCS are reminded that, in spite of extensive testing and evaluation, no warranty as to the usefulness of this software is offered and results obtained by use of this software should not necessarily be accepted in place of the expertise of Judges of Compensation or workers' compensation practitioners.

If you wish to be kept informed of updates to this software, please send a blank email to oscar@dol.state.nj.us with the subject "OSCAR-CALCS". We will record your email address and notify you of any updates, revisions, etc.

SYSTEM REQUIREMENTS

OSCAR-CALCS was designed and tested to run on Windows XP and Windows Vista only. While the software will operate with as little as 1GB of memory, 2GB is highly recommended. Approximately 14MB of hard drive space will be required for installation of OSCAR-CALCS as well as the Microsoft .NET framework. **Screen resolution of at least 1024 x 768.**

You will also need to have administrator privileges to install this software on most computers running Windows XP.

A Note On Movements

Like most Windows-based applications, OSCAR-CALCS uses the tab key for movement between fields in a given window. You can, of course, use the mouse to move around a window, but this will probably take longer and you'll have to mess with the mouse. But hey, it's your call.

The date fields in OSCAR-CALCS contain a calendar function. By clicking on the small triangle to the right in the date field, the month corresponding to the date will be displayed. (Try it. It's true.) The two small arrows at the top of the month allow you to move (virtually) to prior or future months and select the appropriate date. You can also simply enter the date using the forward slash (/) key or arrow keys between the month, day and four-digit year.

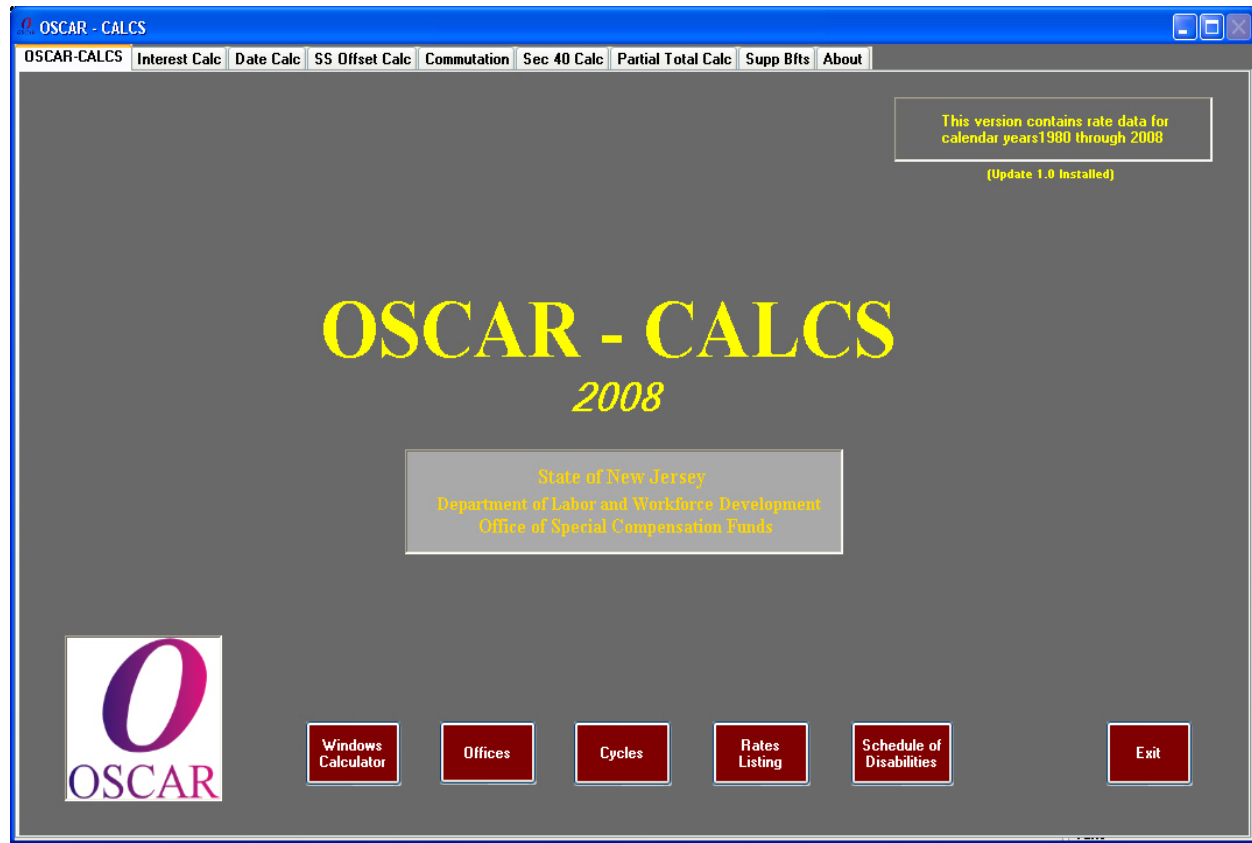
Printing

One each of the function pages is a yellow PRINT button. Clicking on this button will result in a copy of the current function window to be sent to your default printer.

OSCAR – CALCS 2008

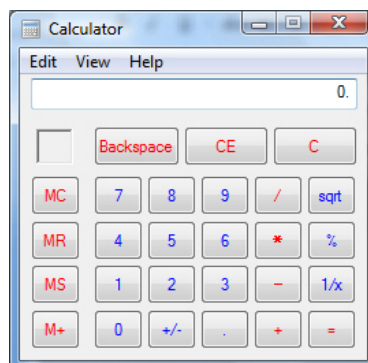
TOUR OF OSCAR-CALCS

Windows Calculator



Shown above is the primary screen of OSCAR-CALCS. From this screen you will navigate to the various features and functions of the software. Please note that the “x” button located in the upper right-hand corner of the screen has been disabled. You must use the “EXIT” button provided in the lower right-hand corner of the screen to exit OSCAR-CALCS.

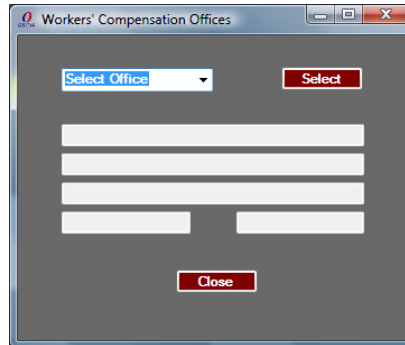
Along the bottom of the primary screen are a series of features which are designed for quick access and reference. The first is the “Windows Calculator” which simply calls up the calculator built into your version of Windows:



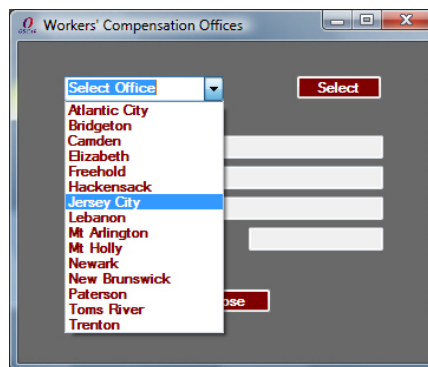
Your version of Windows and the “View” you have selected will determine what your Windows calculator looks like.

Offices

The “Offices” button will provide address, phone and fax information for each of the fifteen vicinages of the Division.



Select a vicinage from the drop down list at the upper-right of the window:



Once the specific vicinage is highlighted, press the “Select” button to display the data for that vicinage:



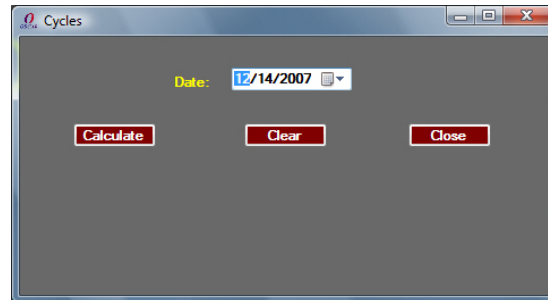
When finished, press the “Close” button.

We have pretty much dispensed with telling you to click on the “Close” button on the most of the following pages because it’s obvious and tedious.

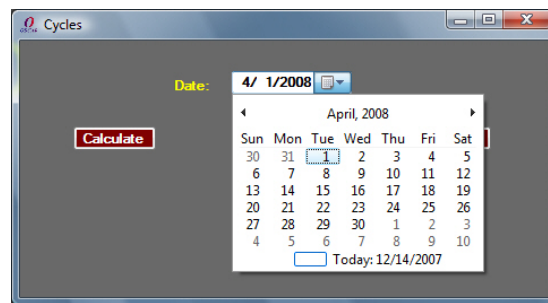
OSCAR – CALCS 2008

Cycles

The “Cycles” function is designed to determine the cycle week and day of a date entered into or selected from the “Date” field of this window:

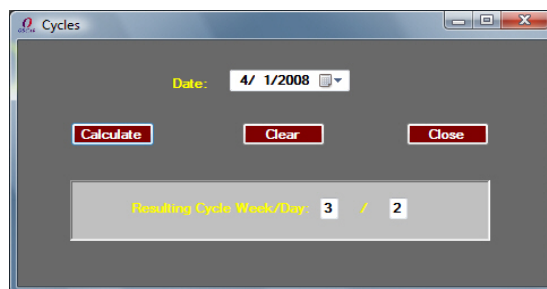


The date may be entered manually in the normal date format using the “/” to move between month, day and year. You may also select the date by clicking on the small arrow immediately to the right of the date shown which will display the current month:



Using the small arrows to the left and right of the month/year heading of the calendar page, you can move backward and forward to the selected month and year and then clicking on the specific date.

The result of your entry or selection of a specific date will display the cycle week and day for that date:

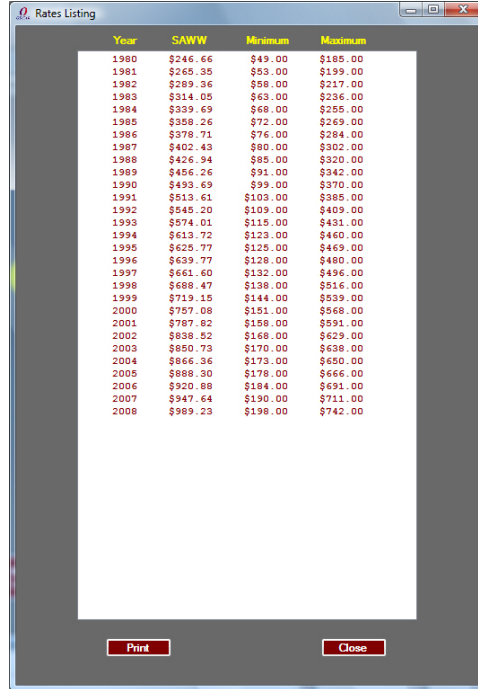


You may then click on “Clear” to enter or select another date or click on “Close” to exit the “Cycles” function.

OSCAR – CALCS 2008

Rates Listing

The “Rates Listing” button will display the Statewide Average Weekly Wage (SAWW), the minimum and the maximum weekly workers’ compensation rates for the each year since 1980:

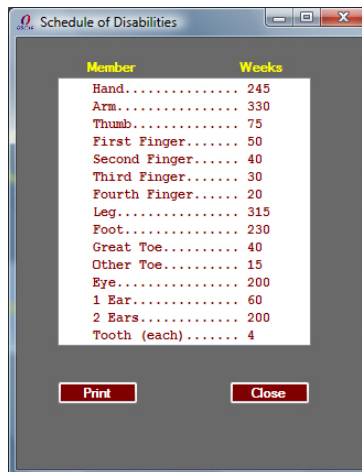


Year	SAWW	Minimum	Maximum
1980	\$246.66	\$49.00	\$185.00
1981	\$265.35	\$53.00	\$199.00
1982	\$289.36	\$58.00	\$217.00
1983	\$314.05	\$63.00	\$236.00
1984	\$339.69	\$68.00	\$255.00
1985	\$358.26	\$72.00	\$269.00
1986	\$378.71	\$76.00	\$284.00
1987	\$402.43	\$80.00	\$302.00
1988	\$426.94	\$85.00	\$320.00
1989	\$456.26	\$91.00	\$342.00
1990	\$493.69	\$99.00	\$370.00
1991	\$513.61	\$103.00	\$385.00
1992	\$545.20	\$109.00	\$409.00
1993	\$574.01	\$115.00	\$431.00
1994	\$613.72	\$123.00	\$460.00
1995	\$625.77	\$125.00	\$469.00
1996	\$639.77	\$128.00	\$480.00
1997	\$661.60	\$132.00	\$496.00
1998	\$688.47	\$138.00	\$516.00
1999	\$719.15	\$144.00	\$539.00
2000	\$757.08	\$151.00	\$568.00
2001	\$787.82	\$158.00	\$591.00
2002	\$838.82	\$168.00	\$629.00
2003	\$850.73	\$170.00	\$638.00
2004	\$866.36	\$173.00	\$650.00
2005	\$888.30	\$178.00	\$666.00
2006	\$920.88	\$184.00	\$691.00
2007	\$947.64	\$190.00	\$711.00
2008	\$989.23	\$198.00	\$742.00

By clicking on the “Print” button, you may print the rates listing to your local printer.

Schedule of Disabilities

The “Schedule of Disabilities” button will display the current schedule as prescribed at N.J.S.A. 34:15-12 et seq. with the same print capabilities of the “Rates Listing,” above:



Member	Weeks
Hand.....	245
Arm.....	330
Thumb.....	75
First Finger.....	50
Second Finger.....	40
Third Finger.....	30
Fourth Finger.....	20
Leg.....	315
Foot.....	230
Great Toe.....	40
Other Toe.....	15
Eye.....	200
1 Ear.....	60
2 Ears.....	200
Tooth (each).....	4

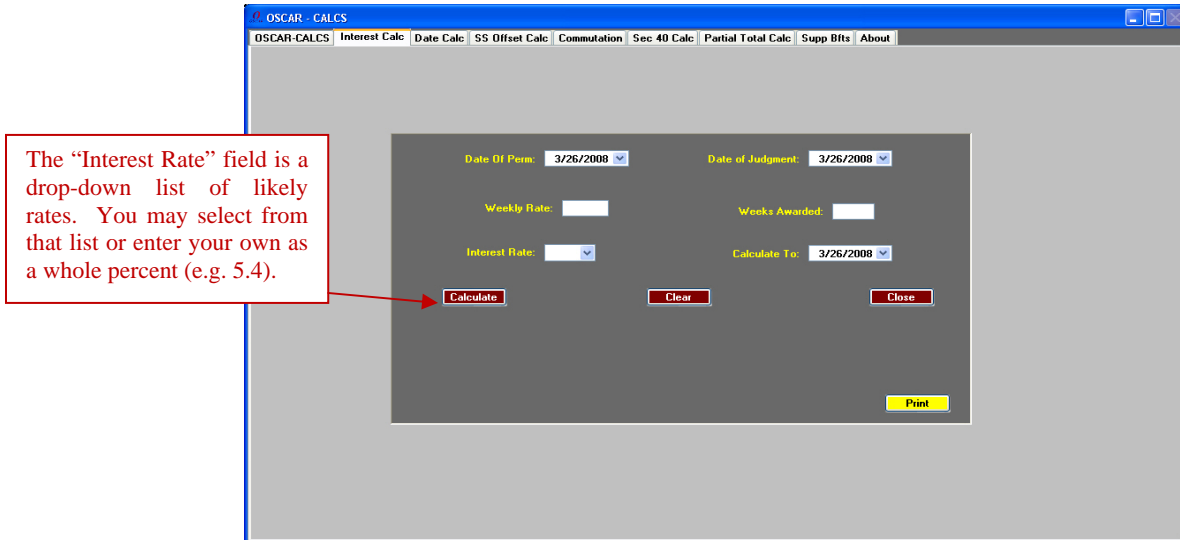
OSCAR – CALCS 2008

OSCAR-CALC TABS

Across the top of the OSCAR-CALCS window are nine tabs which may be clicked to display the particular functionality desired.

Interest Calc

This function is designed to calculate interest due on permanency benefits based upon specified period since the date of Judgment at a specific interest rate.



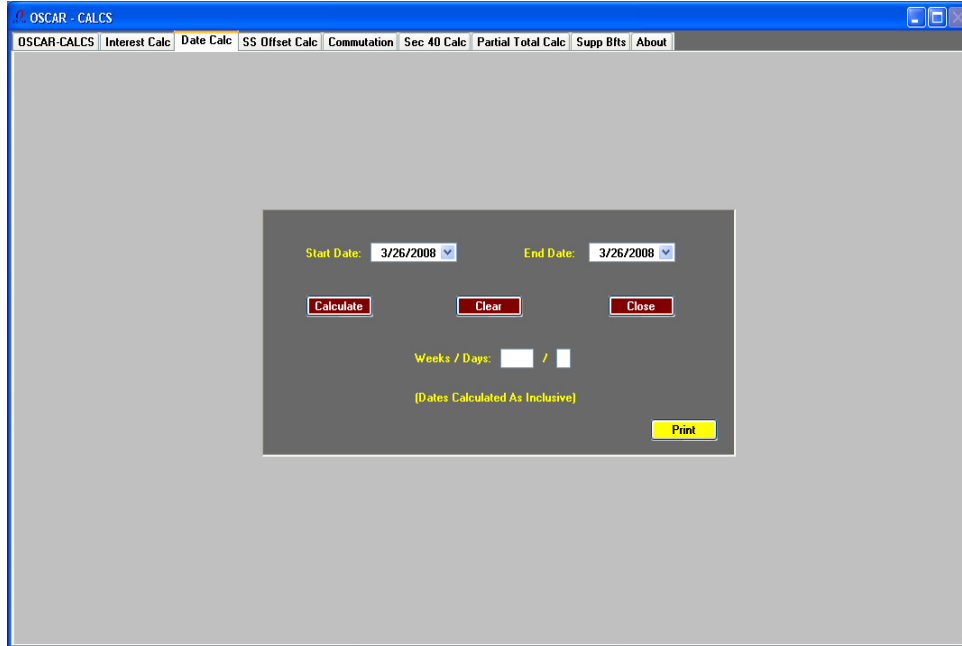
Once the appropriate data has been entered, the basic amount, interest and total amount due will be displayed:



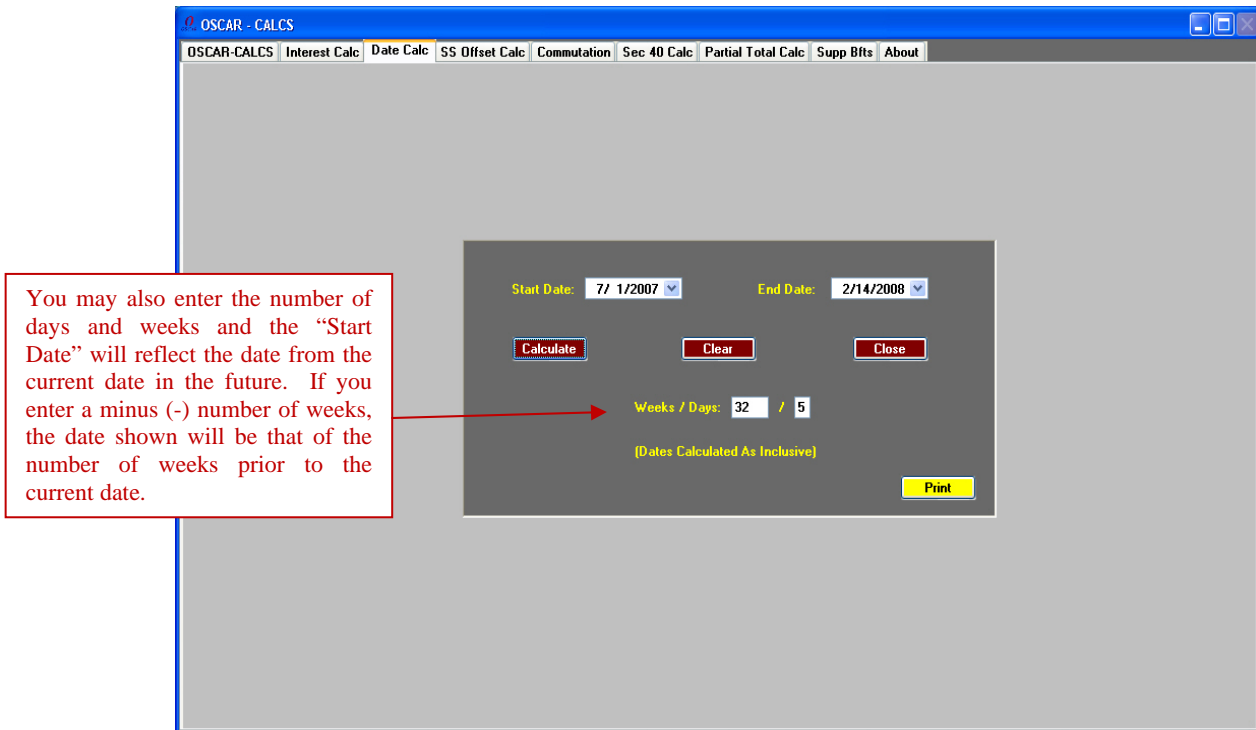
OSCAR – CALCS 2008

Date Calc

The “Date Calc” function simply provides the number of weeks and days between two specified dates. Note that the calculations are inclusive of the two dates entered.



Once both dates have been entered or selected and the “Calculate” button is clicked, the number of weeks and days are displayed:



OSCAR – CALCS 2008

SS Offset Calc

The “SS Offset Calc” function calculates the offset of workers’ compensation benefits provided at N.J.S.A. 34;15-95.5:

OSCAR - CALCS

OSCAR-CALCS | Interest Calc | Date Calc | **SS Offset Calc** | Commutation | Sec 40 Calc | Partial Total Calc | Supp Bfts | About

Average Current (monthly) Earnings (ACE):

OR 80% of ACE:

Monthly SS Benefit (incl. auxiliaries):

Weekly WC Benefit (w/o SS offset):

Once either the ACE or 80% ACE, the Monthly SS benefit and weekly workers’ compensation benefit rate have been entered, clicking on the “Calculate” button will result in the display of the adjusted weekly workers’ compensation rate after offset.

OSCAR - CALCS

OSCAR-CALCS | Interest Calc | Date Calc | **SS Offset Calc** | Commutation | Sec 40 Calc | Partial Total Calc | Supp Bfts | About

Average Current (monthly) Earnings (ACE):

OR 80% of ACE:

Monthly SS Benefit (incl. auxiliaries):

Weekly WC Benefit (w/o SS offset):

Adjusted Weekly WC Benefit:

If, in the unlikely event that the “Adjusted Weekly WC Benefits” is shown as less than zero (in parentheses), the result should be considered zero.

OSCAR – CALCS 2008

Commutation

The “Commutation” function will calculate the present value of the requested amount to be commuted at simple interest of 5% as per N.J.S.A. 34:15-25.

The screenshot shows the 'OSCAR - CALCS' application window with the 'Commutation' tab selected. The form contains the following fields and controls:

- Weekly Rate:
- Weeks Awarded:
- Weeks Paid:
- Amount Requested:
- Method: Back End Front End Balance
- Buttons: Calculate, Clear, Close, and Print.

Once all rate, award and requested amount data has been entered and the method for the commutation selected from the three presented, the amount of the award to be received by the petitioner, the amount used, the number of weeks and the balance of the award will be displayed:

The screenshot shows the 'OSCAR - CALCS' application window with the 'Commutation' tab selected. The form contains the following fields and controls:

- Weekly Rate:
- Weeks Awarded:
- Weeks Paid:
- Amount Requested:
- Method: Back End Front End Balance
- Buttons: Calculate, Clear, Close, and Print.
- Results displayed below the form:
 - Amount To Receive:
 - Amount Used:
 - Balance Of Weeks:
 - Balance Of Award:

OSCAR – CALCS 2008

Section 40 Calc

The “Section 40 Calc” function will calculate the amounts owed under the provisions of N.J.S.A. 34:15-40 where a third-party settlement by the petitioner has been concluded.

OSCAR - CALCS

OSCAR-CALCS | Interest Calc | Date Calc | SS Offset Calc | Commutation | Sec 40 Calc | Partial Total Calc | Supp Bfts | About

WC Awarded/Paid:

	Awarded	Paid
Temporary Disability:	<input type="text"/>	<input type="text"/>
Permanency:	<input type="text"/>	<input type="text"/>
Medical Expenses:	<input type="text"/>	<input type="text"/>
Prior Reimbursement:	<input type="text"/>	

3rd Party Settlement:

Gross Settlement Amount:

Fee Percent:
(If blank or zero, standard fee assumed)

Buttons: Calculate, Clear, Close, Print

Once all applicable award and payment data as well as the third party settlement data have been entered, press the “Calculate” button to display the results:

OSCAR - CALCS

OSCAR-CALCS | Interest Calc | Date Calc | SS Offset Calc | Commutation | Sec 40 Calc | Partial Total Calc | Supp Bfts | About

WC Awarded/Paid:

	Awarded	Paid
Temporary Disability:	5000	3000
Permanency:	56000	43000
Medical Expenses:	123000	123000
Prior Reimbursement:	0	

3rd Party Settlement:

Gross Settlement Amount: 525000

Fee Percent:
(If blank or zero, standard fee assumed)

Petitioner Dues To Respondent: \$107,214.57

Buttons: Calculate, Clear, Close, Print

OSCAR – CALCS 2008

Partial Total Calc

The “Partial Total Calc” function is designed to accept all data necessary for the calculation of permanent partial disability under N.J.S.A. 34:15-12c. This window is made up of four tabs (Case Data, Abdullah Credits, Reopener Credits, and Dollar Credits) and a results window on the right.

Case Data

The case data tab provides entry spaces for the year of injury, the weekly wage and percents (and number for teeth) for the body parts cited in the statute. The year of injury must be entered. The weekly wage will be assumed to equal or exceed the maximum weekly wage if left blank. The percentage (e.g., 50, 33.3333, etc.) for at least one body part or a whole number of teeth must be entered.

OSCAR - CALCS

OSCAR-CALCS Interest Calc Date Calc SS Offset Calc Commutation Sec 40 Calc Partial Total Calc Supp Bfts About

Case Data Abdullah Credits Reopener Credits Dollar Credits

Case Data:

Year of Injury: 2006

Weekly Wage:

(Max Assumed If Blank)

[1/3 = 33.3333 2/3 = 66.6666]
(Use Five Decimal Places)

Body Parts / Percents

	Left	Right
Eye:	<input type="text"/>	<input type="text"/>
Ear:	<input type="text"/>	<input type="text"/>
Shoulder:	<input type="text"/>	Head: <input type="text"/>
Arm:	<input type="text"/>	Face: <input type="text"/>
Hand:	<input type="text"/>	Nose: <input type="text"/>
Thumb:	<input type="text"/>	Teeth(#): <input type="text"/>
1st Finger:	<input type="text"/>	Scarring: <input type="text"/>
2nd Finger:	<input type="text"/>	Chest(Ribs): <input type="text"/>
3rd Finger:	<input type="text"/>	Cervical: <input type="text"/>
4th Finger:	<input type="text"/>	Thoracic: <input type="text"/>
Hip:	<input type="text"/>	Lumbosac: <input type="text"/>
Leg:	<input type="text"/>	Coccyx: <input type="text"/>
Foot:	<input type="text"/>	Neurologic: <input type="text"/>
Great Toe:	<input type="text"/>	Psychiatric: <input type="text"/>
1st Toe:	<input type="text"/>	OtherPartial: <input type="text"/>
2nd Toe:	<input type="text"/>	
3rd Toe:	<input type="text"/>	
4th Toe:	<input type="text"/>	

Calculate

Clear

Close

Print

Abdullah Credits

The second tab under “Partial Total Calc.” is for the entry of Abdullah credits, if any. These are expressed in the same percentage or whole number, in the case of teeth, as in the “Case Data” tab.

	Left	Right
Eye:	<input type="text"/>	<input type="text"/>
Ear:	<input type="text"/>	<input type="text"/>
Shoulder:	<input type="text"/>	<input type="text"/>
Arm:	<input type="text"/>	<input type="text"/>
Hand:	<input type="text"/>	<input type="text"/>
Thumb:	<input type="text"/>	<input type="text"/>
1st Finger:	<input type="text"/>	<input type="text"/>
2nd Finger:	<input type="text"/>	<input type="text"/>
3rd Finger:	<input type="text"/>	<input type="text"/>
4th Finger:	<input type="text"/>	<input type="text"/>
Hip:	<input type="text"/>	<input type="text"/>
Leg:	<input type="text"/>	<input type="text"/>
Foot:	<input type="text"/>	<input type="text"/>
Great Toe:	<input type="text"/>	<input type="text"/>
1st Toe:	<input type="text"/>	<input type="text"/>
2nd Toe:	<input type="text"/>	<input type="text"/>
3rd Toe:	<input type="text"/>	<input type="text"/>
4th Toe:	<input type="text"/>	<input type="text"/>
Head:	<input type="text"/>	<input type="text"/>
Face:	<input type="text"/>	<input type="text"/>
Nose:	<input type="text"/>	<input type="text"/>
Teeth(#):	<input type="text"/>	<input type="text"/>
Scarring:	<input type="text"/>	<input type="text"/>
Chest(Ribs):	<input type="text"/>	<input type="text"/>
Cervical:	<input type="text"/>	<input type="text"/>
Thoracic:	<input type="text"/>	<input type="text"/>
LumboSac:	<input type="text"/>	<input type="text"/>
Coccyx:	<input type="text"/>	<input type="text"/>
Neurologic:	<input type="text"/>	<input type="text"/>
Psychiatric:	<input type="text"/>	<input type="text"/>
OtherPartial:	<input type="text"/>	<input type="text"/>

Reopener Credits

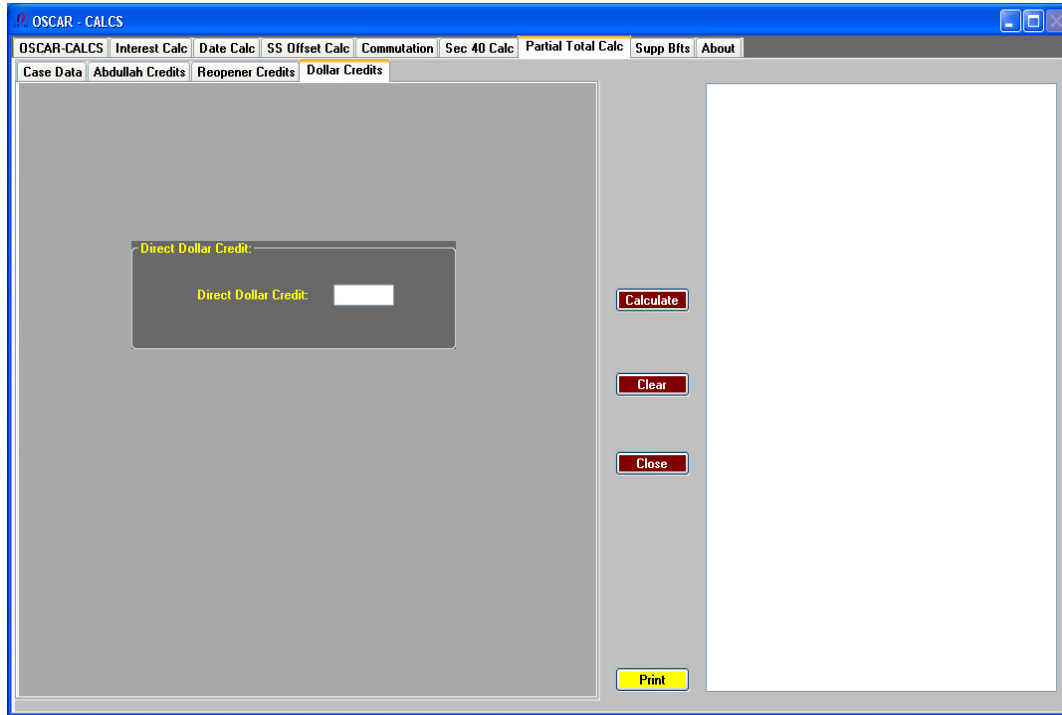
The third tab under “Partial Total Calc.” is for entry of reopener credits, if any. These are expressed in the same percentage or whole number, in the case of teeth, as in the “Case Data” and “Abdullah Credits” tabs.

	Left	Right
Eye:	<input type="text"/>	<input type="text"/>
Ear:	<input type="text"/>	<input type="text"/>
Shoulder:	<input type="text"/>	<input type="text"/>
Arm:	<input type="text"/>	<input type="text"/>
Hand:	<input type="text"/>	<input type="text"/>
Thumb:	<input type="text"/>	<input type="text"/>
1st Finger:	<input type="text"/>	<input type="text"/>
2nd Finger:	<input type="text"/>	<input type="text"/>
3rd Finger:	<input type="text"/>	<input type="text"/>
4th Finger:	<input type="text"/>	<input type="text"/>
Hip:	<input type="text"/>	<input type="text"/>
Leg:	<input type="text"/>	<input type="text"/>
Foot:	<input type="text"/>	<input type="text"/>
Great Toe:	<input type="text"/>	<input type="text"/>
1st Toe:	<input type="text"/>	<input type="text"/>
2nd Toe:	<input type="text"/>	<input type="text"/>
3rd Toe:	<input type="text"/>	<input type="text"/>
4th Toe:	<input type="text"/>	<input type="text"/>
Head:	<input type="text"/>	<input type="text"/>
Face:	<input type="text"/>	<input type="text"/>
Nose:	<input type="text"/>	<input type="text"/>
Teeth(#):	<input type="text"/>	<input type="text"/>
Scarring:	<input type="text"/>	<input type="text"/>
Chest(Ribs):	<input type="text"/>	<input type="text"/>
Cervical:	<input type="text"/>	<input type="text"/>
Thoracic:	<input type="text"/>	<input type="text"/>
LumboSac:	<input type="text"/>	<input type="text"/>
Coccyx:	<input type="text"/>	<input type="text"/>
Neurologic:	<input type="text"/>	<input type="text"/>
Psychiatric:	<input type="text"/>	<input type="text"/>
OtherPartial:	<input type="text"/>	<input type="text"/>

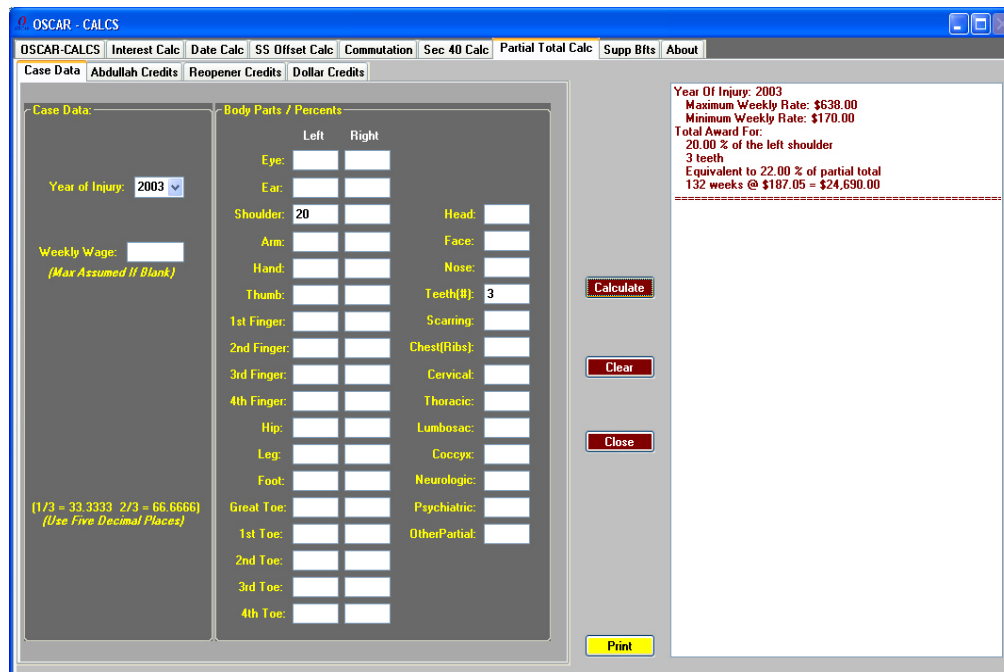
OSCAR – CALCS 2008

Dollar Credits

The fourth tab under “Partial Total Calc” is for entry of any dollar credits applicable to amounts otherwise payable by the respondent.



Once all required entries have been made on the “Case Data” tab and any additional entries made on the three other tabs, clicking on the “Calculate” button will display the result in the window on the right of the window.



OSCAR – CALCS 2008

Supp Bfts.

The “Supp Bfts” tab of OSCAR-CALCS calculates any supplemental benefits that may be payable to a totally and permanently disabled petitioner under the provisions of N.J.S.A. 34:15-95.4. This calculation is limited to cases where the date of totality occurred prior to January 1, 1980 and the rate awarded is no more that the maximum of \$156 per week in 1979.

OSCAR - CALCS

OSCAR-CALCS | Interest Calc | Date Calc | SS Offset Calc | Commutation | Sec 40 Calc | Partial Total Calc | Supp Bfts | About

Date of Totality/Death: 3/26/2008 Awarded Weekly Rate:

Monthly Gross SS Benefit: Date of SS Benefit: 3/26/2008

Monthly Black Lung Benefit: Monthly Disability Pension Benefit:

Please Note:

Please note that all results arising from use of this function are estimates only. Final determinations as to eligibility for and amounts of Supplemental Benefits will be made by the Office of Special Compensation Funds following an award of total permanent disability or dependency benefits.

Once all applicable data has been entered and the “Calculate” button is clicked, the estimated supplemental benefits are shown:

OSCAR - CALCS

OSCAR-CALCS | Interest Calc | Date Calc | SS Offset Calc | Commutation | Sec 40 Calc | Partial Total Calc | Supp Bfts | About

Date of Totality/Death: 12/15/1979 Awarded Weekly Rate: 156

Monthly Gross SS Benefit: 1434 Date of SS Benefit: 3/ 1/2008

Monthly Black Lung Benefit: 0 Monthly Disability Pension Benefit: 0

Weekly Benefit Payable By Respondent: \$156.00

Supplemental Benefit Payable By OSCF: \$469.38

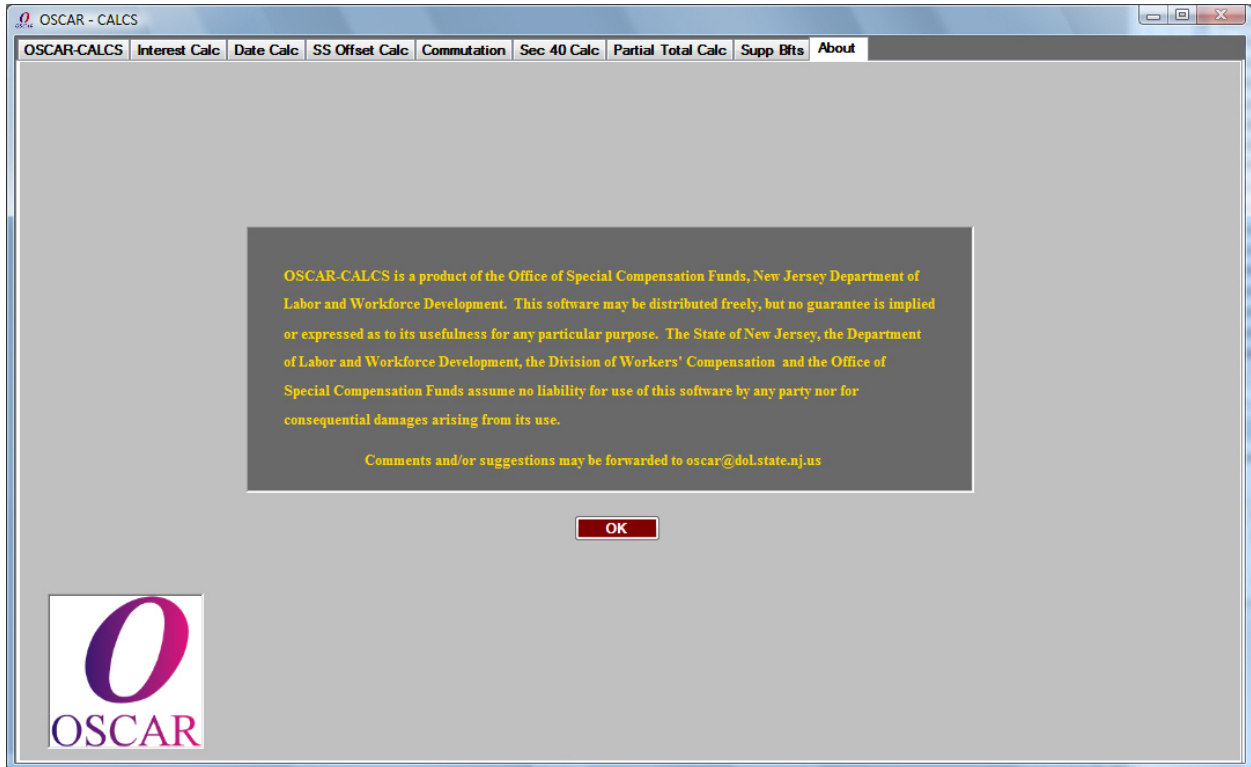
Total Weekly Benefit: \$625.38

Please note that all results arising from use of this function are estimates only. Final determinations as to eligibility for and amounts of Supplemental Benefits will be made by the Office of Special Compensation Funds following an award of total permanent disability or dependency benefits.

OSCAR – CALCS 2008

About

The last tab in the OSCAR-CALCS window is the “About” window which describes the source of this software and the terms and conditions of its use. Please read this information carefully.



If you wish to be kept informed of updates to this software, please send a blank email to oscar@dol.state.nj.us with the subject “OSCAR-CALCS”. We will record your email address and notify you of any updates, revisions, etc.