

NEW JERSEY BUILDING PERMITS AUGUST 2025

The August 2025 building permits report offers key insights into New Jersey's residential development trends. A total of 2,513 housing units were authorized for construction, which represents less permitting activity compared to both the previous month and the same period last year.

Insights:

- 490 fewer units than in July 2025
- 974 fewer units than in August 2024
- 1,288 single-family units authorized
- 1,005 five or more multifamily units authorized

Top Counties by Permits Issued:

- Essex County: 437 units
- Bergen County: 271 units
- Hudson County: 233 units

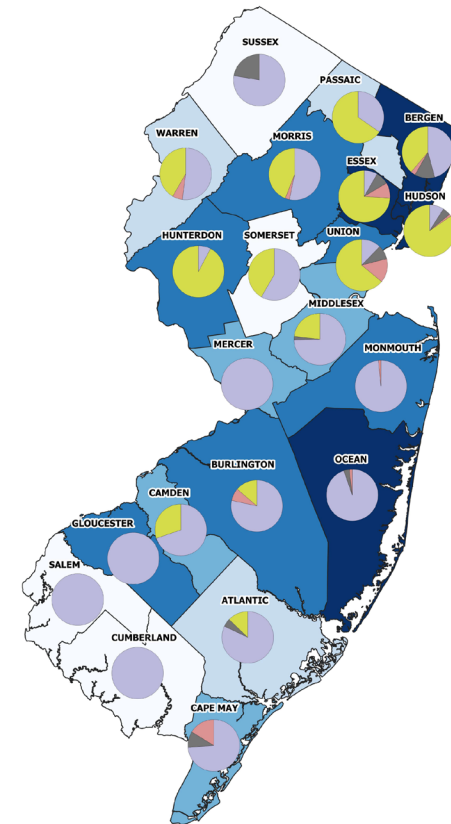
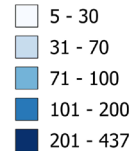
Top Municipalities by Permits Issued:

- Newark (Essex County): 283 units
- Jersey City (Hudson County): 156 units
- Clinton Township (Hunterdon County): 96 units

Unit Category



Total Units August 2025



Office of Research
and Information

NEW JERSEY STATE DATA CENTER

NJSDC

[NJ.GOV/LABOR/DATA](https://nj.gov/labor/data)



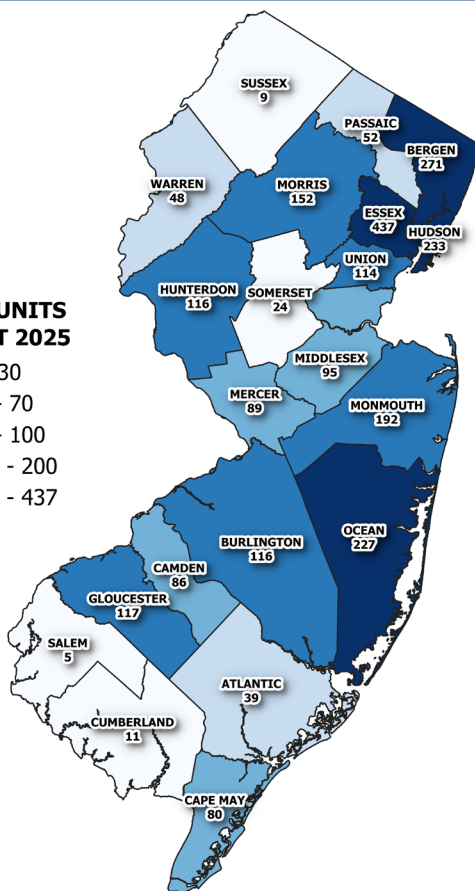
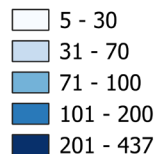
BUILDING PERMITS, AUGUST 2025

RESIDENTIAL HOUSING UNITS AUTHORIZED BY BUILDING PERMITS, AUGUST 2025

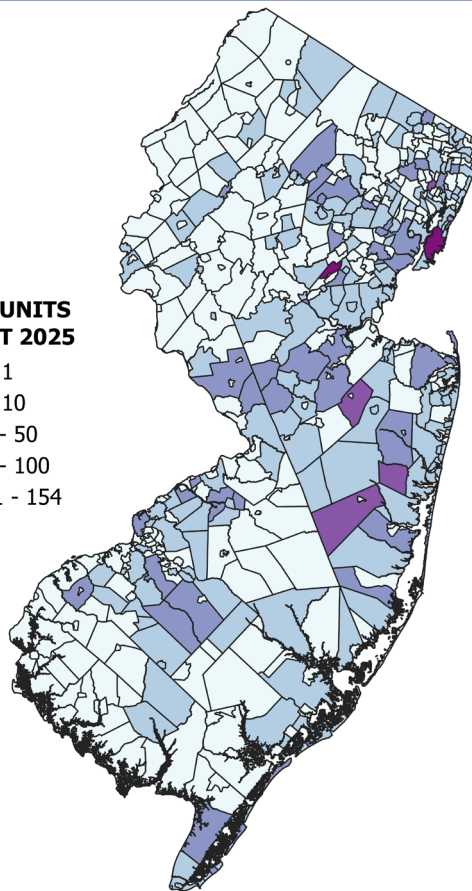
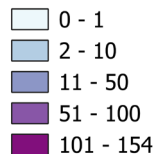
COUNTIES

MUNICIPALITIES

TOTAL UNITS AUGUST 2025



TOTAL UNITS AUGUST 2025



For more information, tables, and maps please visit our Building Permits Survey page [here](#).

SOURCE:

U.S. Census Bureau, Building Permits Survey

DEFINITION OF TERMS:

Residential Dwelling unit (or housing unit):

A house or apartment unit intended for occupancy as separate living quarters and having either a kitchen or cooking facilities; or direct access from the outside through a common hall.

UNIT CATEGORIES:

Single-family house: A house with one dwelling unit includes semi-detached and row houses.

Two-family house: A house with two housing units.

Three-and four-family buildings: Each building contains three or four housing units

Five-or-more-family buildings: Each building contains five-or-more housing units.

NOTE: This report counts individual housing units that are meant to be independently occupied not number of buildings.

The New Jersey State Data Center, along with the NJDOL's Office of Research and Information, prepared this report to provide labor market data, aiming to support public and private sectors in understanding and leveraging these statistics.



STAY INFORMED—subscribe to our publications for exclusive insights and updates at NJ.GOV/LABOR/DATA.