

# DATA - DRIVEN TRANSIT PLANNING IN NORTHERN NEW JERSEY

New Jersey State Data Center Annual Network Meeting  
June 17, 2015

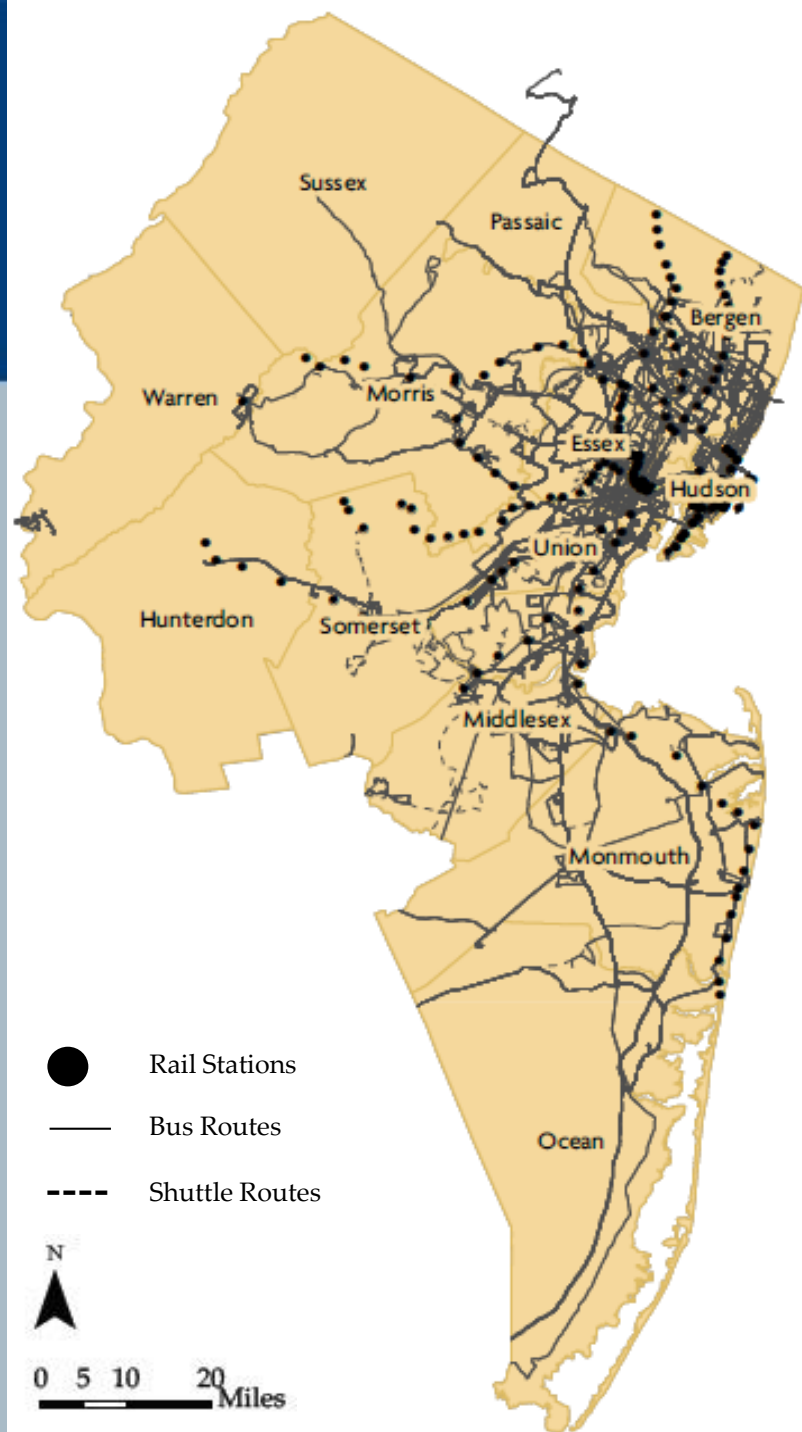


Sutapa Bhattacharjee & Debleena Anand  
Principal Planner      Planning Analyst  
[sbhattacharjee@njtpa.org](mailto:sbhattacharjee@njtpa.org)      [danand@njtpa.org](mailto:danand@njtpa.org)

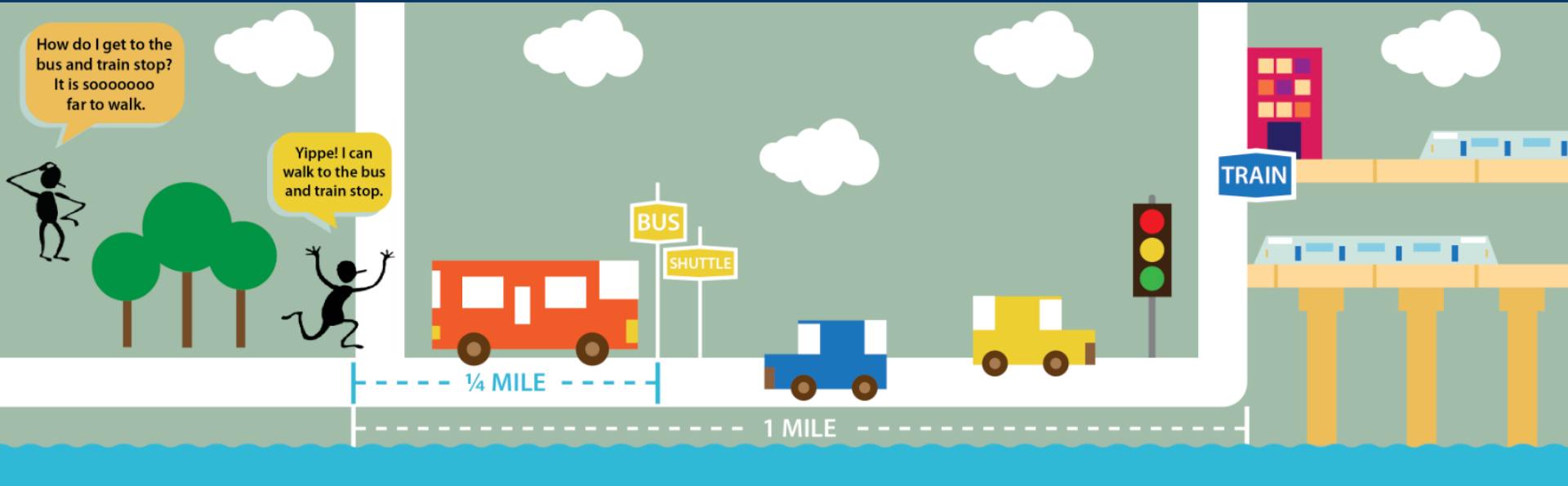
# Overview

- **Background**
- **Goals / Objectives**
- **Data Sources**
- **Method of Analysis**
- **Results of the Analysis**
- **Presentation / Visualization of the Results**

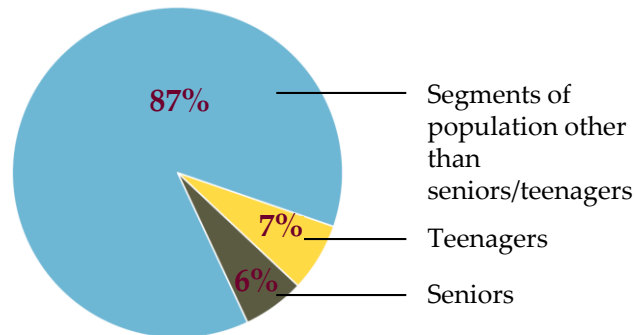
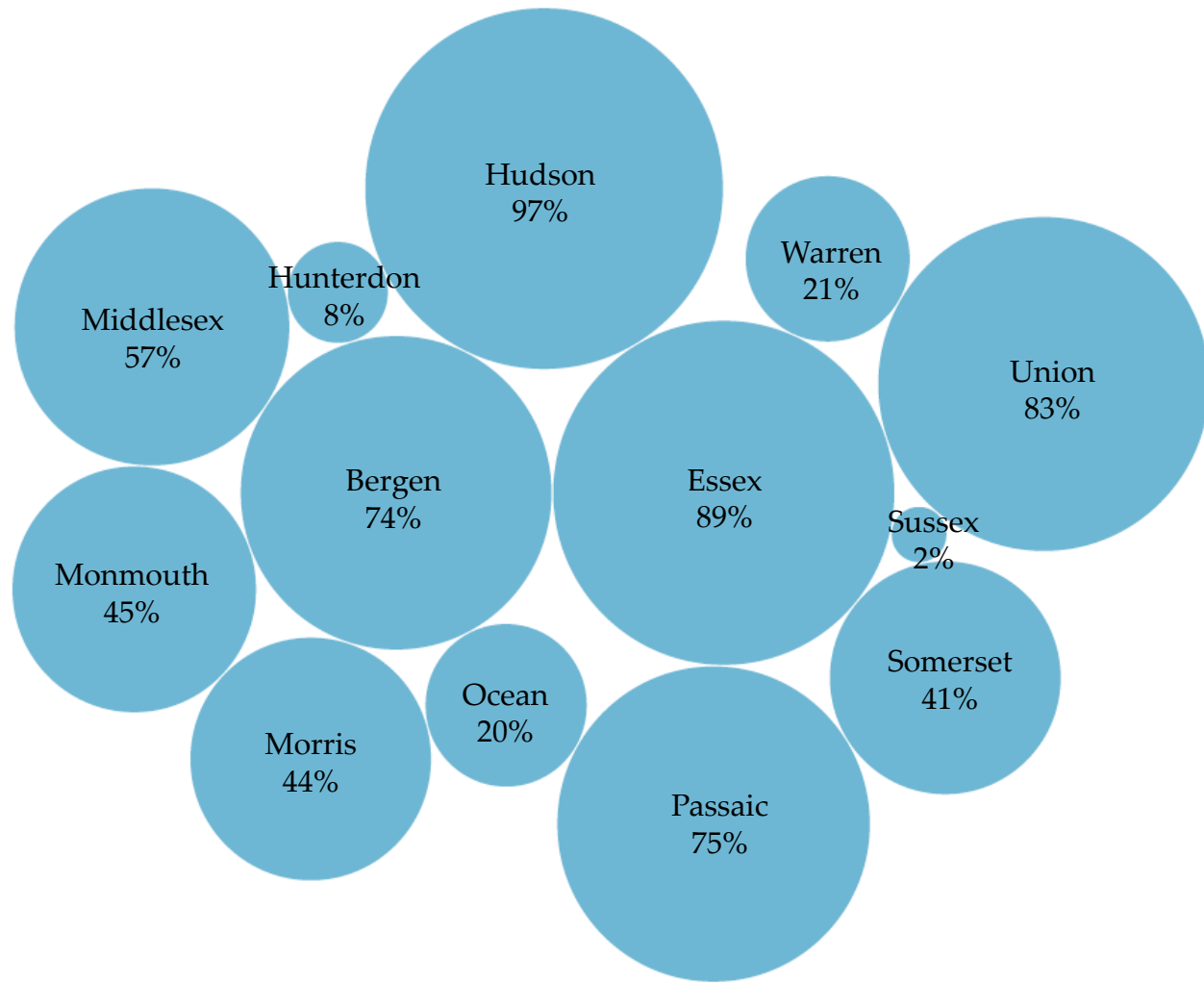
# Major Transit Services



# Who lives close to public transit services?

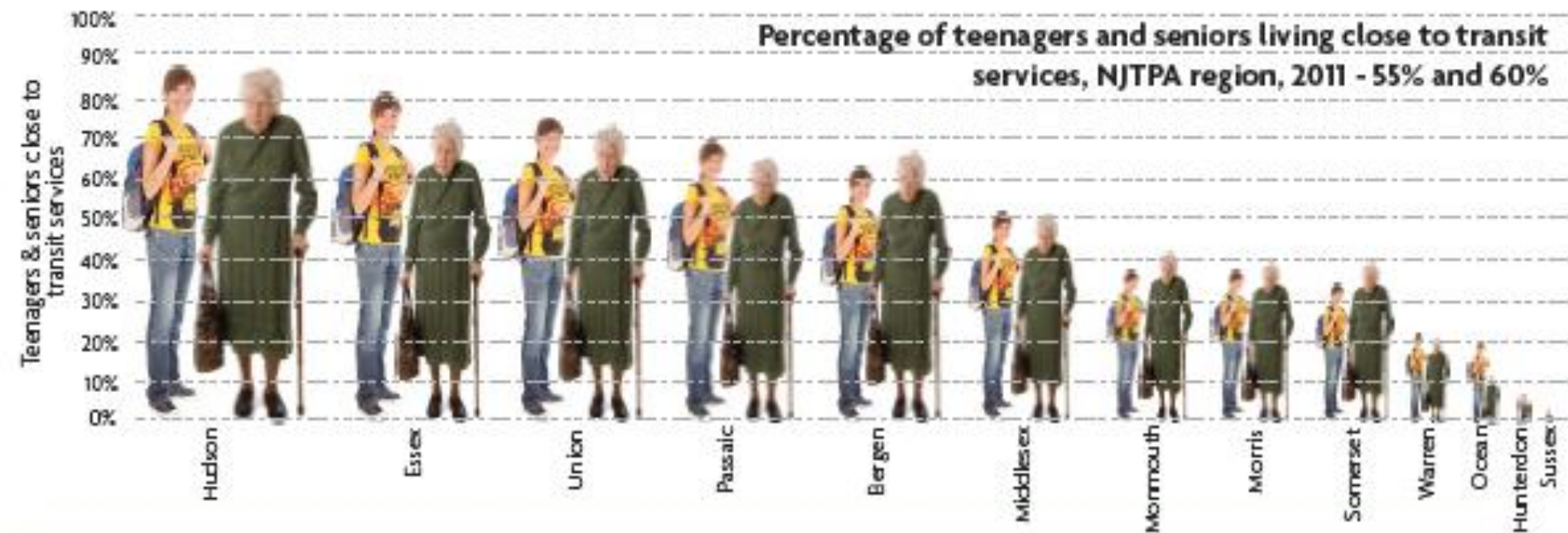


# Percentage of total population living close to transit services in 2011 – 60%



Percentage of various segments of the population living close to transit services, NJTPA region, 2011

# Percentage of segments of population living close to transit services

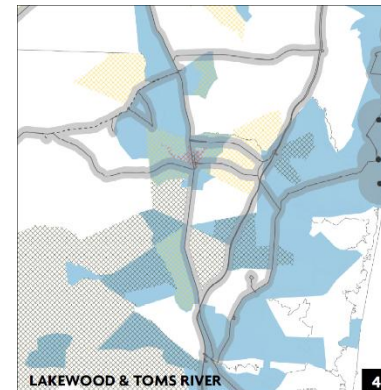
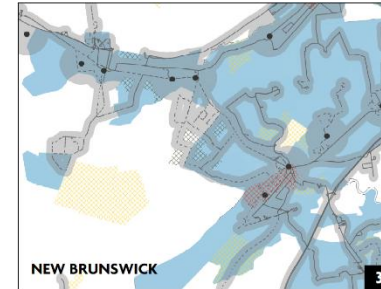
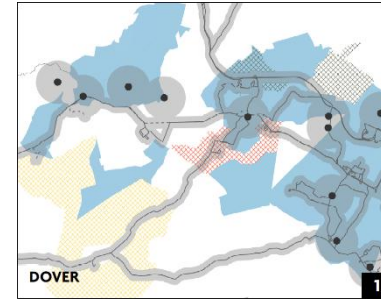
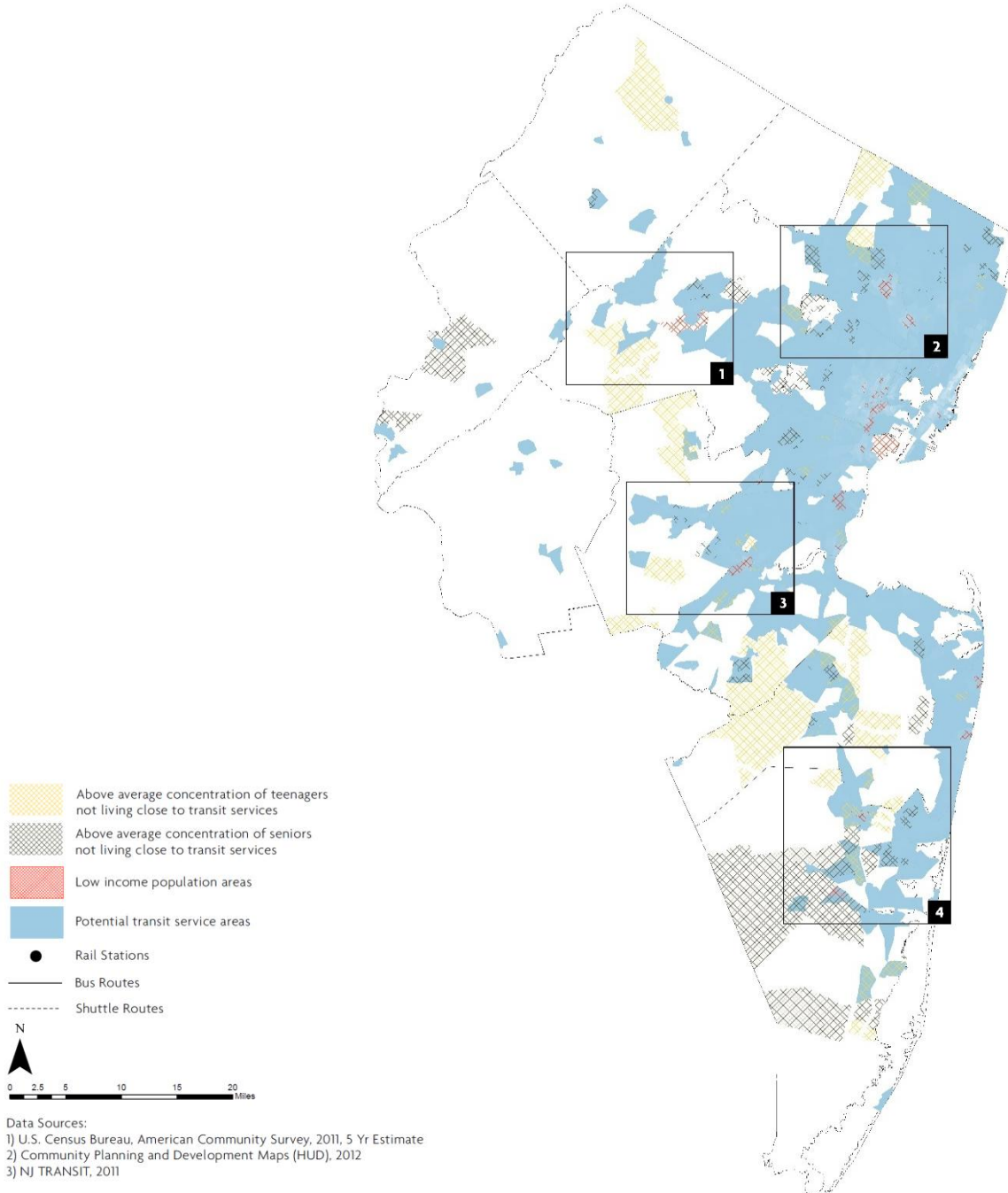


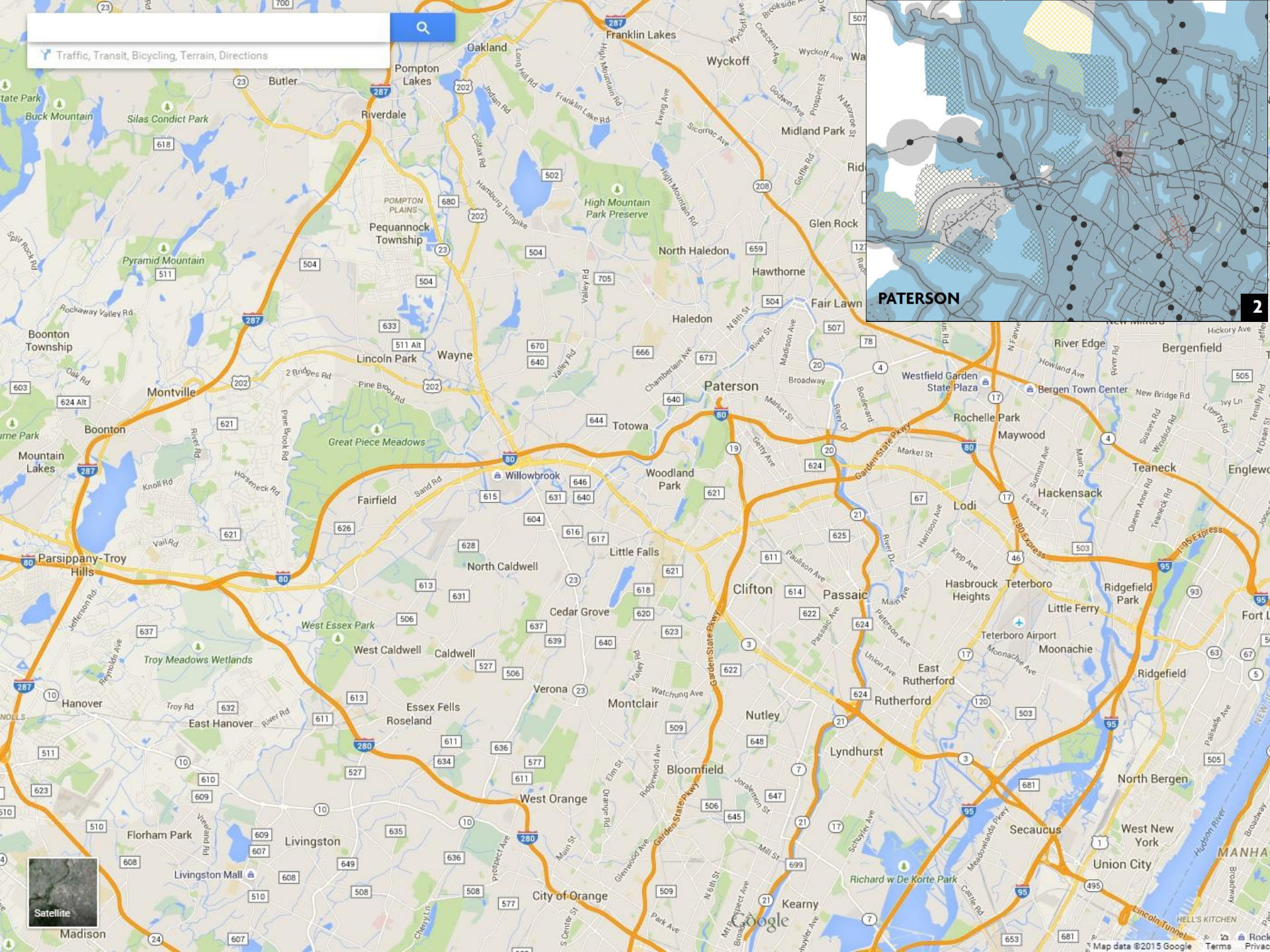
## Low income population areas

According to HUD, 62 census tracts of the region have 80% or higher low to moderate income households. These census tracts have been emphasized by TNJ for the Regional Plan for Sustainable Development.

# Where might public transit services be improved?

## Areas for further evaluation



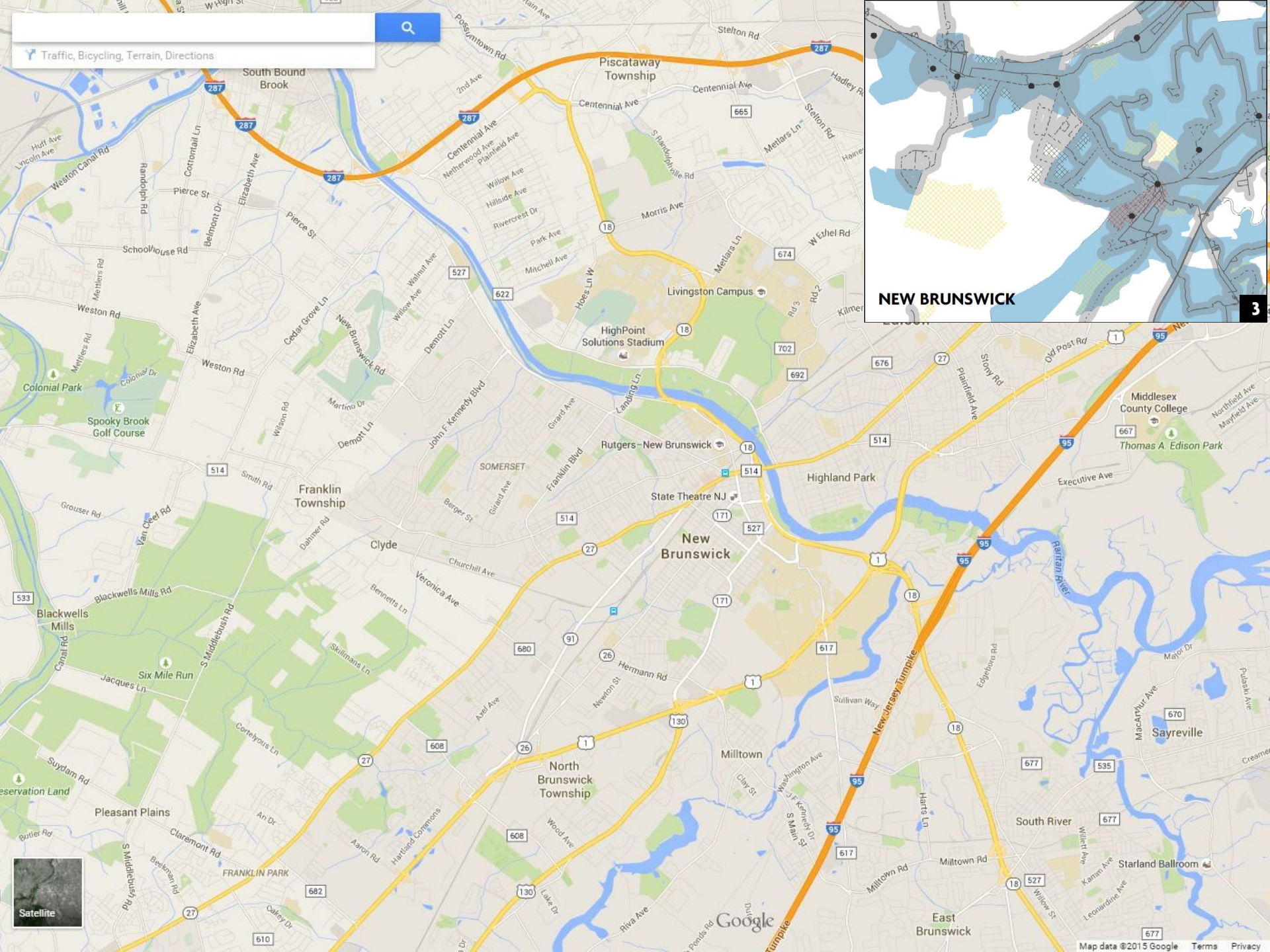


PATERSON

2

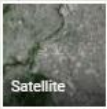






NEW BRUNSWICK

3



# Conclusion

- **Major challenges/Issues**
- **Utility of the poster**
- **References**

**Thank You!**