

# Public Sector Statistics

Joseph Dalaker

Economy-Wide Statistics Division

Disclaimer: This report is released to inform interested parties of research and to encourage discussion of work in progress. The views expressed are those of the authors and not necessarily those of the U.S. Census Bureau.

United States<sup>™</sup>  
**Census**  
Bureau

U.S. Department of Commerce  
Economics and Statistics Administration  
U.S. CENSUS BUREAU  
[census.gov](https://www.census.gov)

# Statistics About Governments

## Main purposes

- Provide economic statistics about governments
- Serve as public-sector counterpart to private sector
- Track activity of governments over time

Response is voluntary

Virtually no confidentiality restriction

# State and Local Government Data: Uses

## Calculation of important economic measures

- GDP: Bureau of Economic Analysis
- Flow of Funds: Federal Reserve Board
- Other federal agencies including
  - Office of Management and Budget
  - National Center for Educational Statistics
  - National Science Foundation
  - Centers for Medicare & Medicaid Services
  - Council of Economic Advisors
  - Bureau of Justice Statistics

# State and Local Government Data: Uses (cont.)

Time series analysis

Comparative analysis

Public Policy

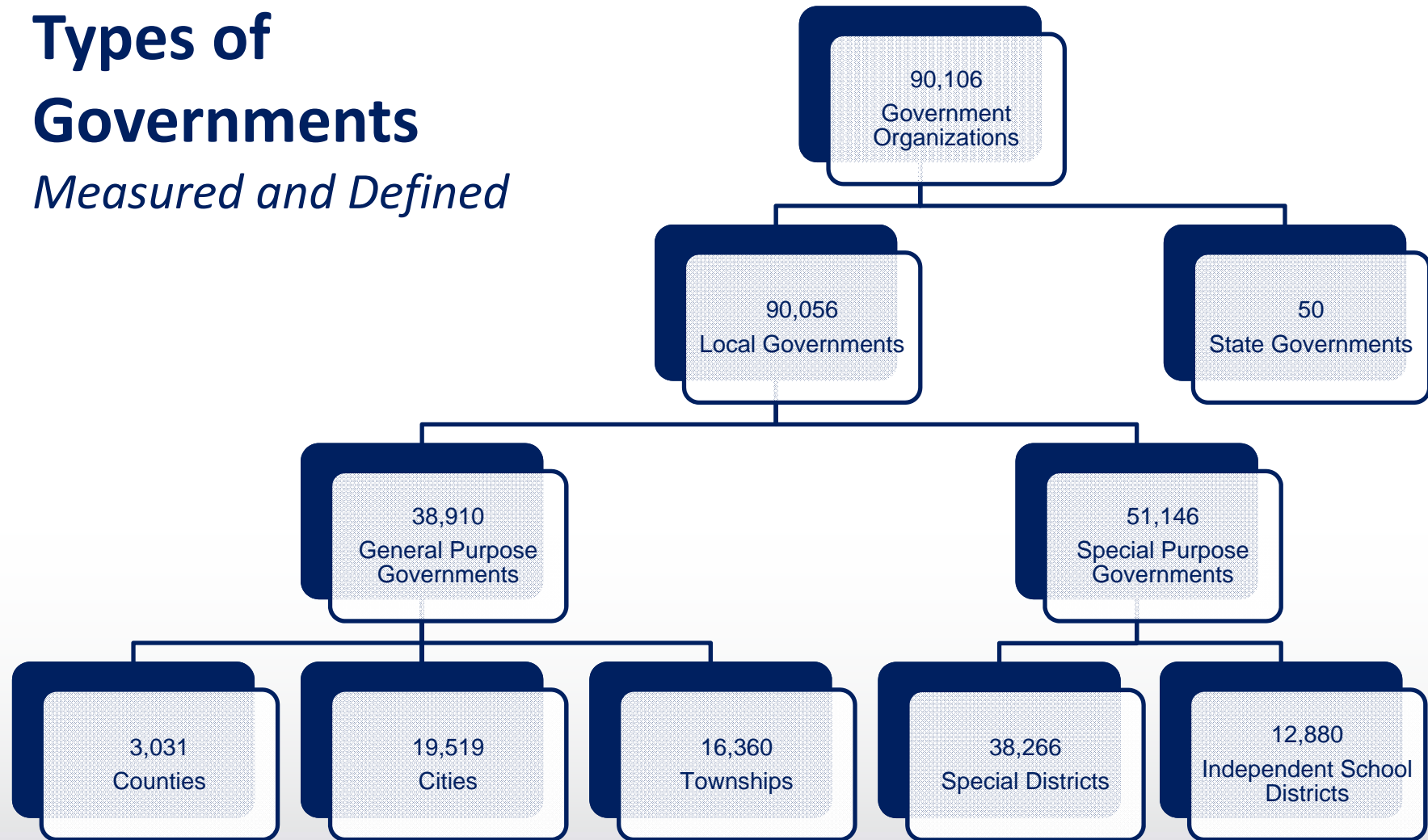
- Tax, health, education, welfare, transit, etc.
- State governments
- Brookings Institution
- The Nelson A. Rockefeller Institute of Government

# Statistics on Governments

Frequency	Survey/Program	Data Items Included
Every 5 Years	Census of Governments	Number of units, employment, finance, etc.
	Government Units Survey	Functions performed, authorizing legislation, etc.
Annual	Annual Survey of Public Employment and Payroll	Employment, wages, etc.
	Annual Survey of State Government Finances	Revenue, expenditures, etc.
	Annual Survey of Public Pensions	Contributions, assets, etc.
	Annual Survey of Local Government Finances	Revenue, expenditures, debt, assets
	Annual Survey of State Government Tax Collections	Tax revenue
Quarterly	Quarterly Survey of Public Pensions	Contributions, assets, etc.
	Quarterly Summary of State and Local Government Tax Revenues	Tax revenue

# Types of Governments

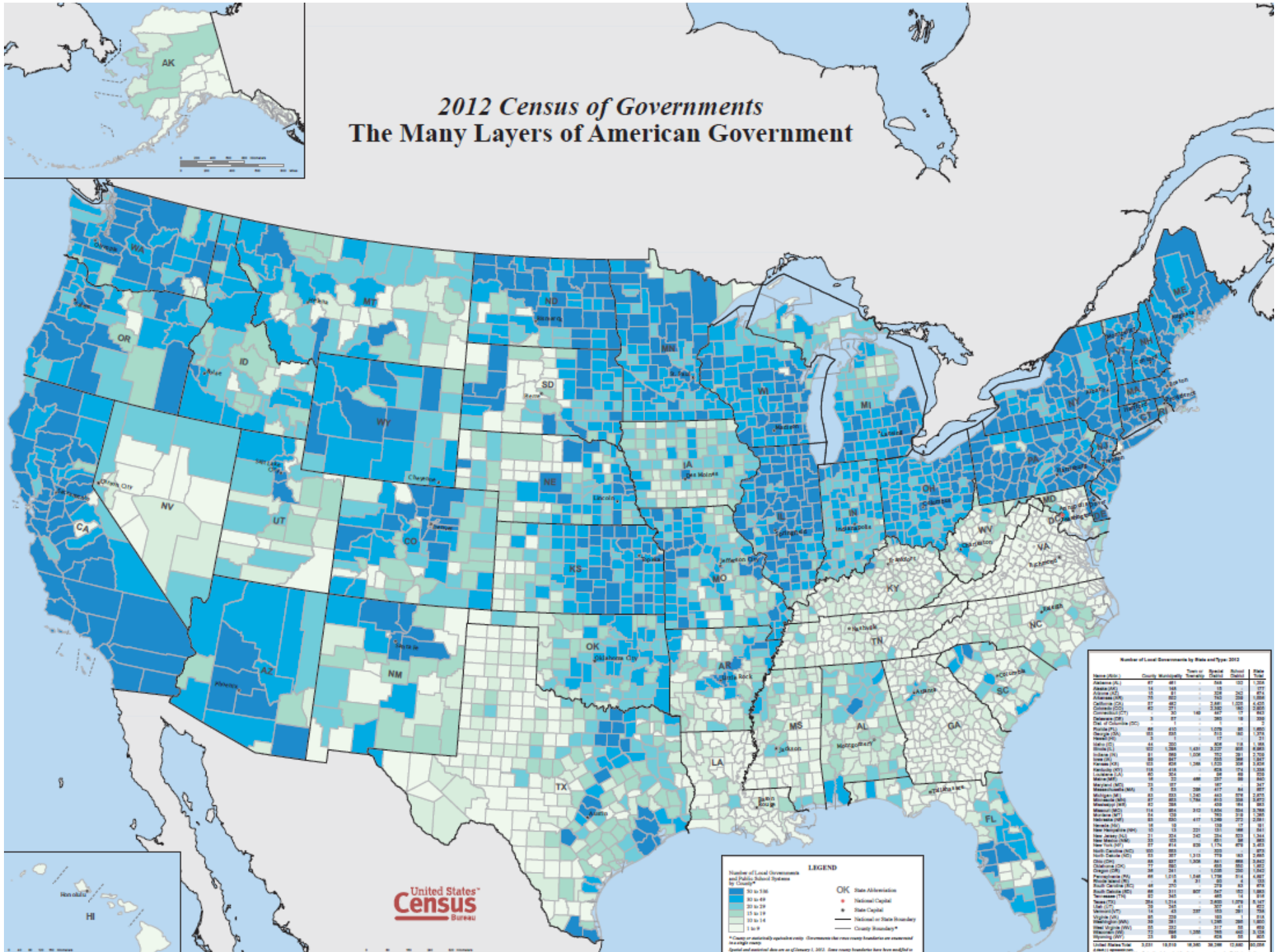
*Measured and Defined*



Source: U.S. Census Bureau, 2012 Census of Governments: Organization



# 2012 Census of Governments The Many Layers of American Government



Number of Local Governments by State and Type, 2012

State (ST)	County	Municipality	Special District	Special District	Special District	Total
Alabama (AL)	67	481	0	548	0	1,096
Alaska (AK)	14	168	0	182	0	352
Arizona (AZ)	15	81	0	328	0	424
Arkansas (AR)	77	267	0	2,681	0	3,025
California (CA)	57	267	0	2,681	0	3,025
Colorado (CO)	6	148	0	380	0	534
Connecticut (CT)	8	37	0	380	0	425
Delaware (DE)	3	1	0	17	0	21
Florida (FL)	68	610	0	1,078	0	1,756
Georgia (GA)	53	833	0	1,113	0	2,479
Hawaii (HI)	1	1	0	17	0	19
Idaho (ID)	2	1	0	17	0	19
Illinois (IL)	102	1,388	1,431	3,229	800	6,850
Indiana (IN)	91	1,068	1,038	1,122	21	3,250
Iowa (IA)	99	347	1,248	253	288	1,886
Kansas (KS)	103	404	1,248	1,023	128	2,803
Kentucky (KY)	118	618	0	858	174	1,658
Louisiana (LA)	62	324	0	497	85	926
Maine (ME)	18	22	488	237	88	843
Maryland (MD)	23	87	0	497	85	692
Massachusetts (MA)	5	53	288	417	84	847
Michigan (MI)	83	833	1,242	613	878	3,576
Minnesota (MN)	57	383	1,794	813	288	3,361
Mississippi (MS)	14	73	0	133	68	282
Missouri (MO)	114	684	310	1,894	284	3,786
Montana (MT)	7	15	0	133	68	223
Nebraska (NE)	93	330	617	1,398	219	2,567
Nevada (NV)	16	15	0	133	68	226
New Hampshire (NH)	21	254	220	131	88	697
New Jersey (NJ)	21	254	220	131	88	697
New Mexico (NM)	10	14	0	133	68	225
New York (NY)	62	614	830	1,176	873	3,503
North Carolina (NC)	103	610	1,078	1,078	80	3,656
North Dakota (ND)	1	1	0	17	0	19
Ohio (OH)	77	887	1,038	1,122	21	3,068
Oklahoma (OK)	77	267	0	2,681	0	3,025
Oregon (OR)	36	281	0	1,023	128	1,532
Pennsylvania (PA)	68	1,012	1,431	1,738	814	4,997
Rhode Island (RI)	5	53	288	417	84	847
South Carolina (SC)	46	270	807	279	83	1,449
South Dakota (SD)	1	1	0	17	0	19
Tennessee (TN)	93	347	1,248	1,023	128	2,746
Texas (TX)	284	1,214	807	547	103	5,085
Utah (UT)	9	54	0	328	0	411
Vermont (VT)	14	43	237	133	73	496
Virginia (VA)	95	229	0	133	88	450
Washington (WA)	39	31	0	133	73	447
West Virginia (WV)	17	22	1,038	137	88	1,285
Wisconsin (WI)	19	88	1,038	1,122	21	2,149
Wyoming (WY)	2	1	0	17	0	19
United States	3,103	18,030	34,288	34,288	12,688	102,327

**LEGEND**

Number of Local Governments and Public Subdivisions by County\*

- 90 to 100
- 80 to 89
- 70 to 79
- 60 to 69
- 50 to 59
- 40 to 49
- 30 to 39
- 20 to 29
- 10 to 19
- 1 to 9

OK State Abbreviation  
 • National Capital  
 \* State Capital  
 — National or State Boundary  
 — County Boundary\*

\*Counts are geographically equivalent county boundaries that may vary from those used in the 2012 Census of Governments. State boundaries have been updated to reflect the most current data as of January 1, 2012. Some county boundaries have been updated to reflect the most current data.

United States<sup>®</sup>  
Census  
Bureau

# New Jersey vs. Pennsylvania vs. Maryland vs. Delaware?

Counts of Governments

Is Government Activity Comparable?

	New Jersey	Pennsylvania	Maryland	Delaware
Counties	21	66	23	3
Cities	324	1,015	157	57
Townships	242	1,546	0	0
Special Districts	234	1,756	167	260
School Districts	523	514	0	19
Total	1,344	4,897	347	339

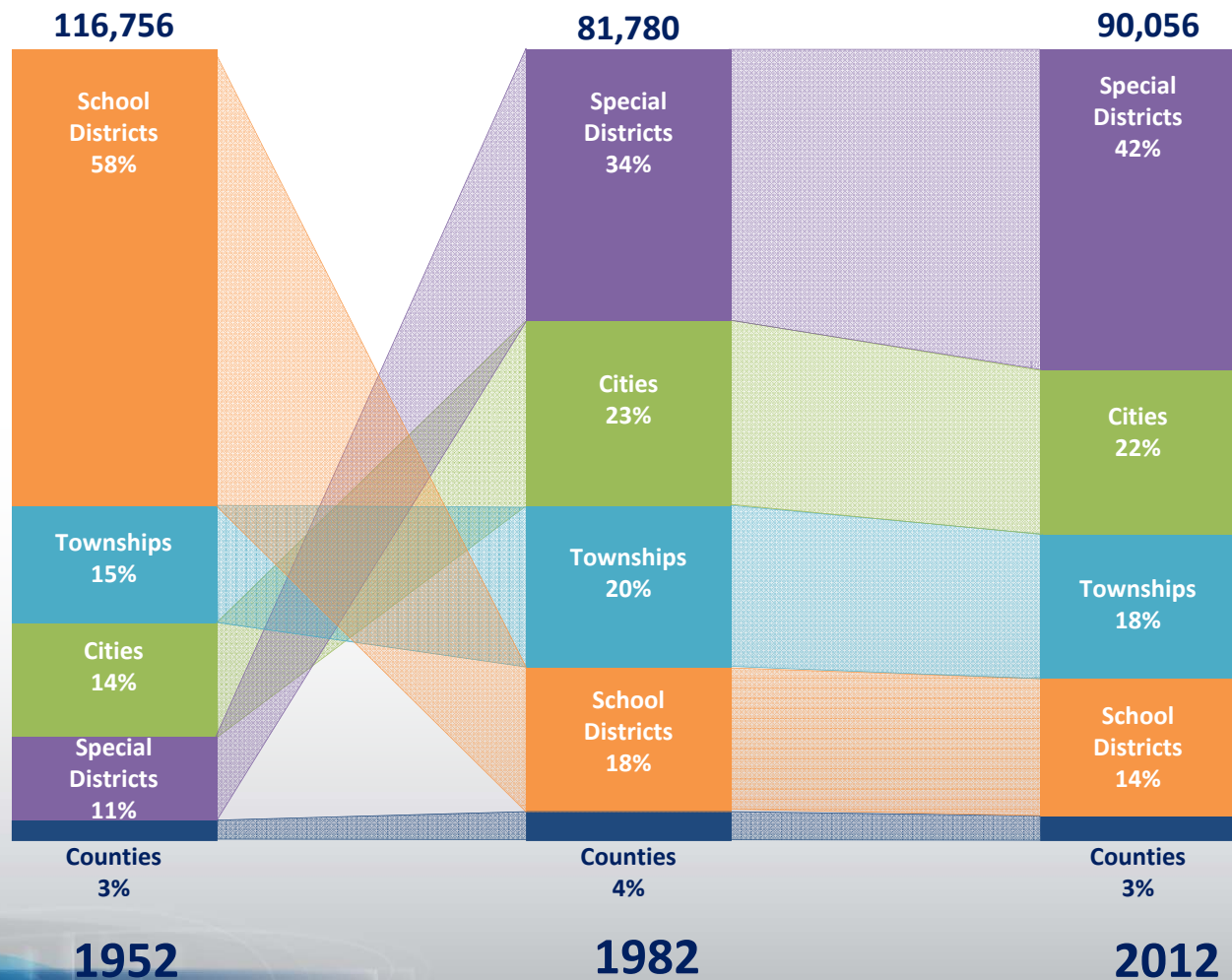
Source: U.S. Census Bureau, 2012 Census of Governments



# Composition of Local Governments

The Evolving Picture of our Governments

Total Number  
of Local  
Governments



# Public Finances

## Government Finances

- Revenue by type
- Expenditure by character and function
- Debt term
- Cash and Securities by type of holding

# Sources of Tax Revenue – Variety Among States

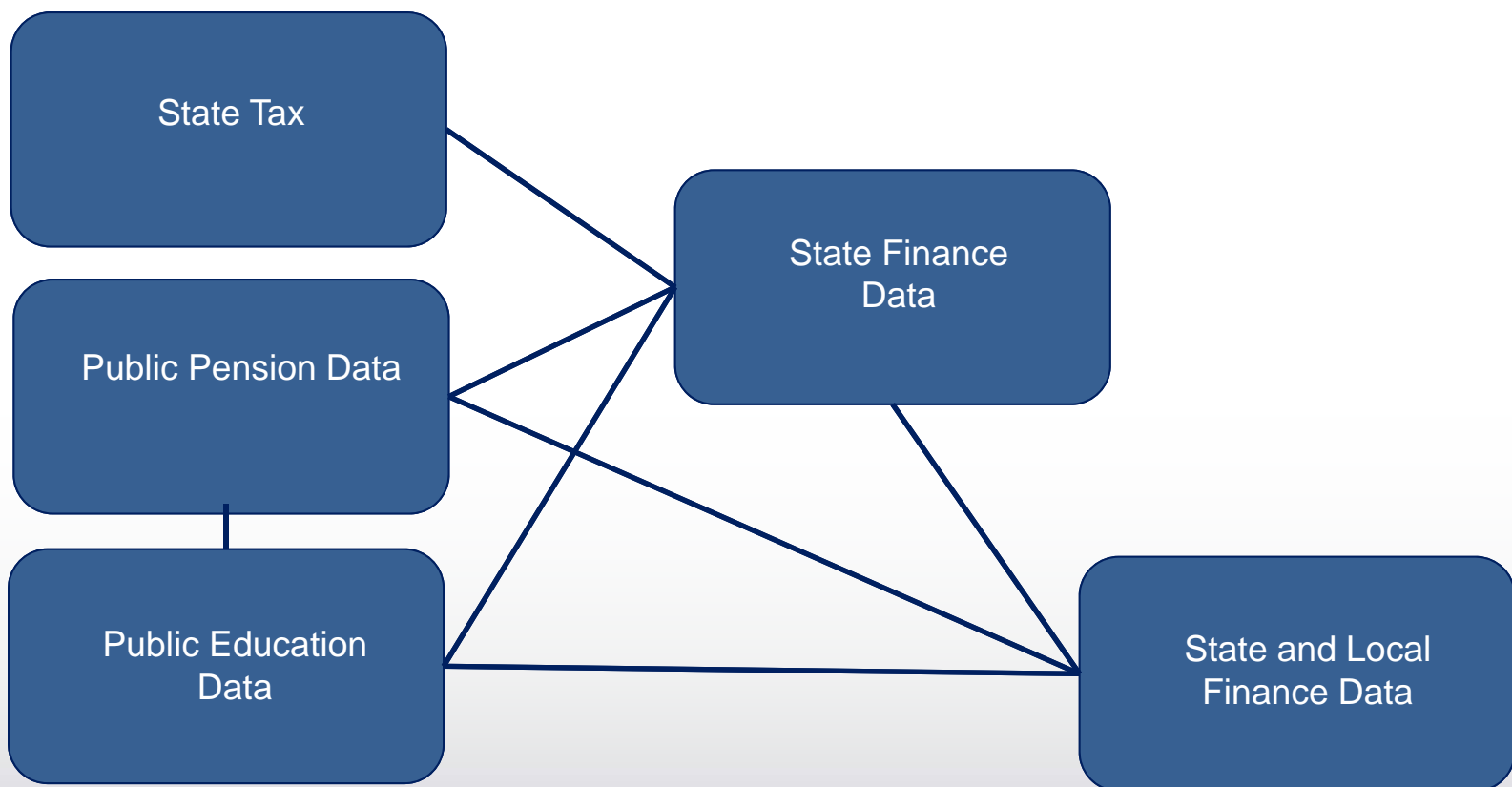
## Percent Distribution of State Government Tax Revenue

Percent Distribution of State Government Tax Revenue											
	Total %	Sales Taxes			License Taxes	Income Taxes			All Other		
		Total	General Sales	Selective Sales	Total	Total	Individual Income	Corporation Income	Total	Property Taxes	Other Taxes
U.S. Average	100	47.5	31.3	16.2	5.9	41.2	35.9	5.3	5.3	1.6	3.7
Alaska	100	7.6	X	7.6	4.2	12.1	X	12.1	<b>76.2</b>	3.8	72.4
Delaware	100	15.1	X	15.1	<b>41.0</b>	41.5	32.8	8.8	2.4	X	2.4
Florida	100	<b>82.1</b>	60.7	21.4	6.0	5.8	X	5.8	6.1	<<.01	6.1
New Jersey	100	43.0	29.9	13.0	5.1	48.3	40.3	8.0	3.6	>.02	3.6

Note: Details may not sum to totals because of rounding.

Source: U.S. Census Bureau, 2014 Survey of State Government Tax Collections

# Finance Data are Nested



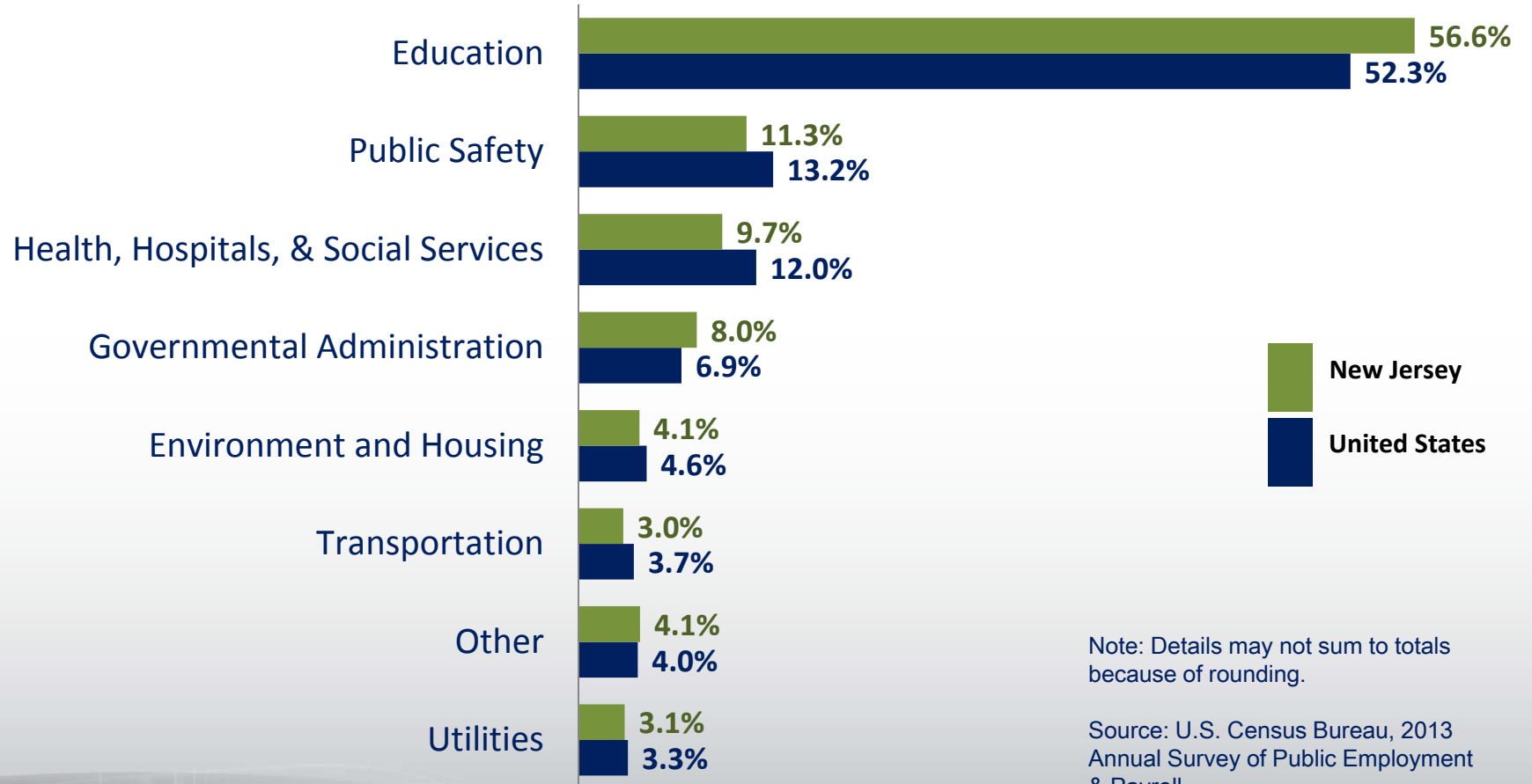
# Public Employment

## Government Employment

- Full-time employees
- Full-time gross payroll
- Part-time employees
- Part-time gross payroll
- Computed FTE

# Governments as Employers

## U.S. and New Jersey State & Local Public Employment Percentage of Full-time Employees by Government Function



U.S. Department of Commerce | Blogs | Index A-Z | Glossary | FAQs

Search

U.S. Census Bureau

Topics: Population, Economy | Geography: Maps, Geographic Data | Library: Infographics, Publications | Data: Tools, Developers | About the Bureau: Research, Surveys | Newsroom: News, Events, Blogs

You are here: [Census.gov](#) > Business & Industry

## Business & Industry

Main | About the Surveys | Data by Geography | Data by Survey | Webinars | FAQs

### Are You in a Survey?

- Is this form legitimate?
- Get help with your form

### Data by Sector:

- Economy-Wide
- Construction
- Governments
- International Trade
- Manufacturing
- Retail Trade
- Services
- Wholesale Trade
- Other Sectors

### Special Topics:

- Business Dynamics
- Business Expenses
- Concentration
- E-Commerce
- Economic Studies
- Historical Data
- North American Industry Classification System (NAICS)

## Census Bureau Economic Statistics

[Get Business Data](#)

### The Economic Census

- Every five years (2002, 2007, 2012, etc.) for every industry.
- Statistics for U.S., states, metro areas, counties, and cities.

[2012 Economic Census](#)

Search Databases: [2007](#) | [2002](#)

### Economic Indicators

- Monthly and quarterly for selected sectors.
- National statistics only.

[Indicator Release Schedule](#)

[Search Indicator Databases](#)

**New:** Now with time-series charts!

### Other Economic Programs

- Annually for selected sectors.
- National statistics, primarily.
- Featured Sites:
  - [Annual & Quarterly Services](#)
  - [County Business Patterns](#)
  - [Enterprise Statistics](#)
  - [Monthly & Annual Retail Trade](#)
  - [Monthly & Annual Wholesale Trade](#)
  - [Nonemployer Statistics](#)
  - [Statistics of US Businesses](#)

Latest Economic Indicator	Previous	Current
<a href="#">New Residential Construction</a> <p>Privately-owned housing starts in March 2014 were at a seasonally adjusted annual rate of 946,000. This is 2.8 percent (+/- 14.7%)* above the revised February 2014 estimate of 920,000.</p>	+1.9*	+2.8*
	February 2014 (r) % change	March 2014 % change

[www.census.gov/econ/other.html](#)



## Federal, State, & Local Governments

- Governments Main
- Get Forms
- Definitions
- FAQs

### Site Resources

- What's New
- Press Releases
- Build-a-Table
- Program Overview

### Reference Documents

- Government Finance & Employment Classification Manual
- Reports & References

### Census of Governments

- 2012
- 2007
- 2002
- 1997
- 1992

### Respondent Tools

- Federal Audit Clearinghouse Submission
- Get Forms

### Contact Information

## Federal, State, & Local Governments Main

[2013 Government Employment Snapshot](#)

[2013 State Finance Revenue Snapshot](#)



GET EMAIL UPDATES

Sign Up for Email Updates Get the latest news by subscribing to [Email Updates](#) from the Census Bureau.

### 2012 Census of Governments

The U.S. Census Bureau conducts a [Census of Governments](#) of all state and local government organization units every 5 years, for years ending in 2 and 7, as required by law under Title 13, U.S. Code, Section 101. The collection of these data will

- Identify the scope and nature of the nation's state and local governments.
- Classify local government organizations, powers, and activities.
- Provide authoritative benchmark data on public finance and public employment.
- Measure state and local governments' fiscal relationships.
- Video: [Factfinder for the Nation -- Census of Governments](#)

### Government Employment & Payroll

Statistics on the number of federal, state, and local government civilian employees and their gross payrolls by functional category. Data are available online from 1992 and on:

- Annual: [Government Employment & Payroll](#)  
[Current Forms and Information Collected](#)
- Customize a data table with [Build-a-Table](#)

### Government Finance Statistics

Financial activity of governments including revenues, expenditures, debt and assets. Data are available online from 1992 and on:

- Annual: [State Government Finances](#)
- Annual: [State & Local Government Finances](#)  
[Current Forms and Information Collected](#)

Financial statistics of public school systems, including data on revenues, expenditures, debt, and assets:

- Annual: [Public Elementary - Secondary Education Finances](#)

Financial statistics on state and local government employee retirement systems. Annual data are available online from 1993 and on. Quarterly data for the last five years are available online.

- Annual:  
[State Public Pensions](#)  
[Current Forms and Information Collected](#)
- [State & Local Public Pensions](#)  
[Current Forms and Information Collected](#)

### Tax Statistics

Annual survey of state government tax revenue and quarterly survey of tax revenue for state & local governments. Annual data are available online from 1992 and on. Quarterly data are available online from 1993 and on:

- Annual: [State Government Tax Collections](#)
- Quarterly: [State & Local Government Tax Revenue](#)
- [Current Forms and Information Collected](#)

### Lists & Structure of Governments

Information about state & local governments, including the number of governments in the U.S.

- [2012 State](#) by type counts
- [2007 edition](#) of Governments Integrated Directory
- [2012 Individual State Descriptions](#) of how governments are organized [PDF, 1,306MB]

### Special Topics

The Census Bureau also conducts surveys about special topics related to government activity for other federal agencies.

- [Criminal Justice Statistics](#)
- [Elementary - Secondary Education Statistics](#)
- [Library Statistics](#)

### Census Redistricting Data

- Access information and data products from the [Census Redistricting Data Program](#) - A decennial census program that provides state officials the opportunity to identify the small area geographies they will need to meet successfully their state or local redistricting requirements.

### Federal Spending

Federal spending on selected programs:

- Annual 1983-2010: [Consolidated Federal Funds Report \(CFFR\)](#)
- Quarterly 1981-2010: Federal Assistance Award Data System (FAADS) [Data has been relocated](#)
- [Federal Audit Clearinghouse](#)

# Conclusion

Public Sector statistics include

- Organization and structure of local governments
- Finances of governments, including pension systems
- Public employees and their payrolls

# Thank you

Joseph Dalaker

Data User Outreach and Education Office

Economy-Wide Statistics Division

[ewd.outreach@census.gov](mailto:ewd.outreach@census.gov)

1-800-242-2184

United States™  
**Census**  
Bureau

U.S. Department of Commerce  
Economics and Statistics Administration  
U.S. CENSUS BUREAU  
census.gov