



USDA National Agricultural Statistics Service

Bruce Eklund, State Statistician

New Jersey Field Office

Agriculture counts and NASS counts for U.S. Agriculture



NASS Mission

To provide timely, accurate,
and useful statistics in service
to U.S. agriculture.

Data Products

Find NASS Data

Methodology

Relevance

Networking / Humility

Know Thy Data

Multi Tasking? Disorder?



NASS Reports

Over 400
National
reports
published
annually

Over 9,000
State-level
reports
annually



ISSN: 1949-159X

Prospective Plantings

Released March 31, 2011, by the National Agricultural Statistics Service (NASS), Agricultural Statistics Board, United States Department of Agriculture (USDA).

Corn Planted Acreage Up 5 Percent from 2010
Soybean Acreage Down 1 Percent
All Wheat Acreage Up 8 Percent
All Cotton Acreage Up 15 Percent

Corn growers intend to plant 92.2 million acres of corn for all purposes in 2011, up 5 percent from last year and 7 percent higher than in 2009. If realized, this will be the second highest planted acreage in the United States since 1944, behind only the 93.5 million acres planted in 2007. Acreage increases of 250,000 or more are expected in Iowa, Kansas, Nebraska, North Dakota, Ohio, and South Dakota. The largest decrease is expected in Texas, down 150,000 acres.

Soybean planted area for 2011 is estimated at 76.6 million acres, down 1 percent from last year. If realized, the United States planted area will be the third largest on record. Compared with last year, planted acreage declines of 100,000 acres or more are expected in Iowa, Kansas, Mississippi, Nebraska, and Ohio. If realized, the planted area in New York and North Dakota will be the largest on record.

All wheat planted area is estimated at 58.0 million acres, up 8 percent from last year. The 2011 winter wheat planted area, at 41.2 million acres, is 10 percent above last year and up 1 percent from the previous estimate. Of this total, about 29.4 million acres are Hard Red Winter, 8.2 million acres are Soft Red Winter, and 3.7 million are White Winter. Area planted to other spring wheat for 2011 is estimated at 14.4 million acres, up 5 percent from 2010. Of this total, about 13.6 million acres are Hard Red Spring wheat. Durum planted area for 2011 is estimated at 2.37 million acres, down 8 percent from 2010.

All cotton plantings for 2011 are expected to total 12.6 million acres, 15 percent above last year. Upland acreage is expected to total 12.3 million acres, up 14 percent from 2010. American Pima acreage is expected to total 252,500 acres, up 24 percent from 2010. Cotton acreage increases are expected in every State. The largest increase, at 548,000 acres, is expected in Texas. Acreage increases of more than 100,000 acres are expected in North Carolina, Georgia, and Mississippi.

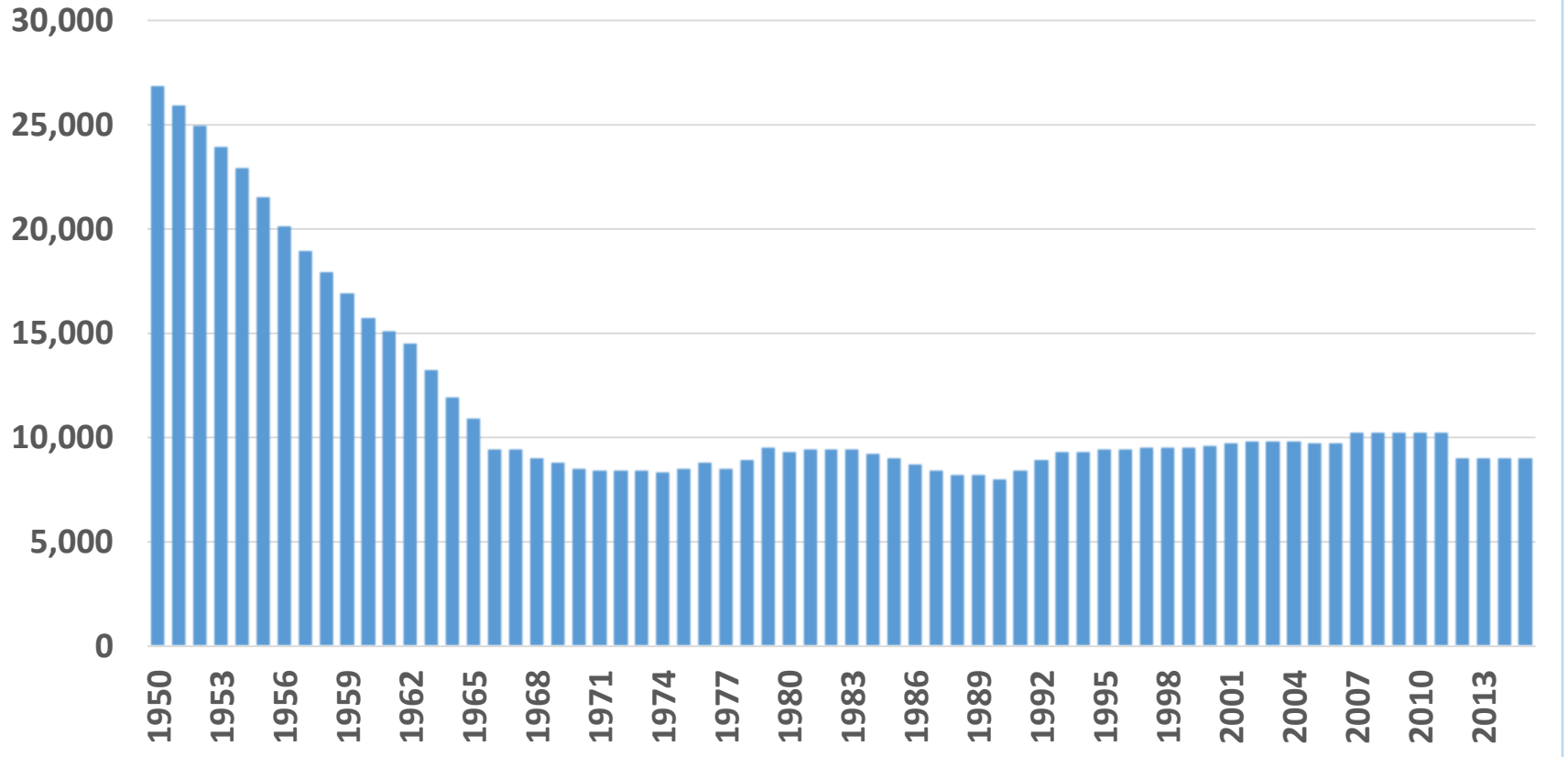


Program Areas

- Commodities
- Economics
- Environmental
- Census



New Jersey Number of Farms,
1950 to 2015

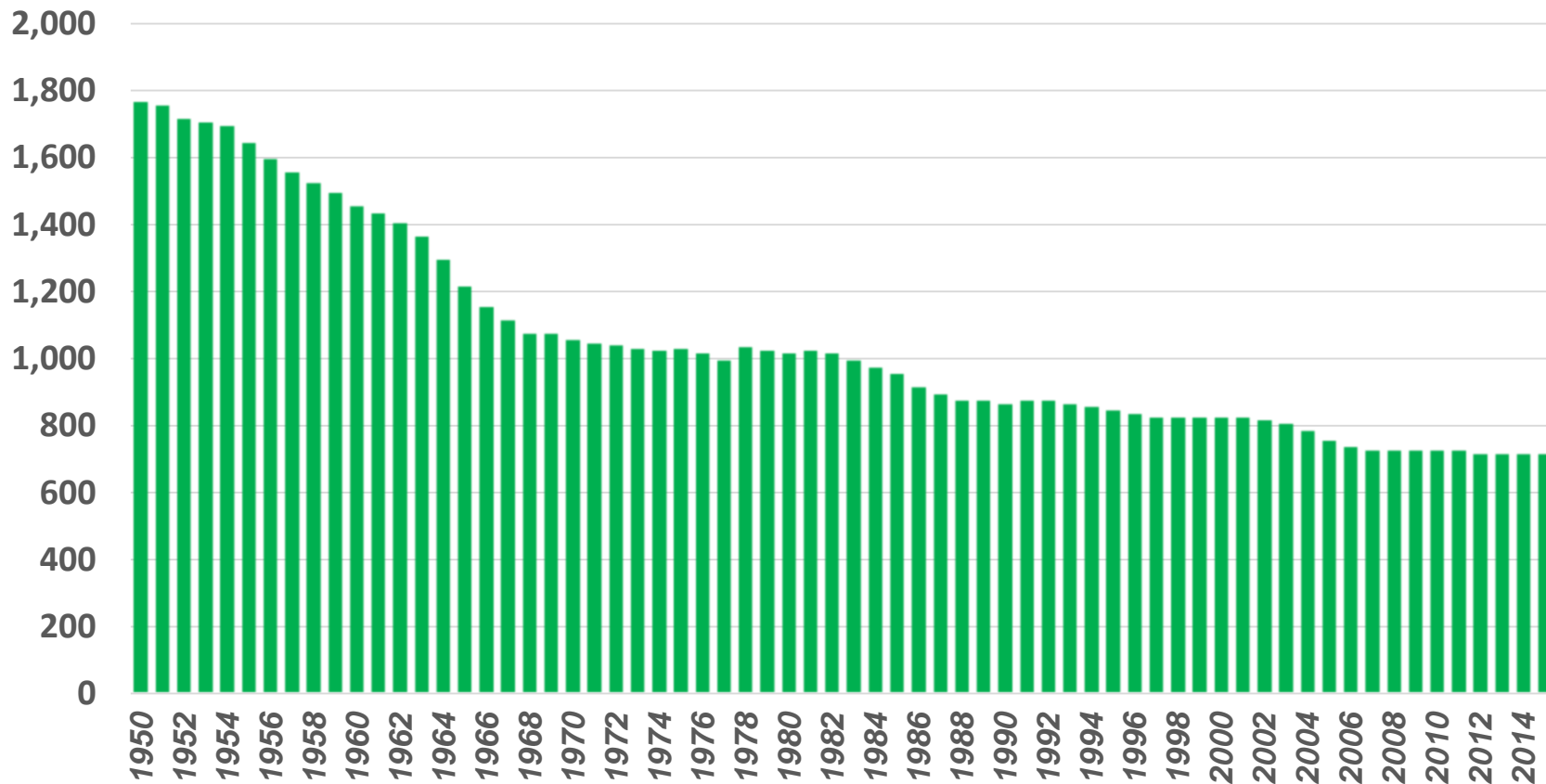


Agriculture counts and NASS counts for U.S. Agriculture

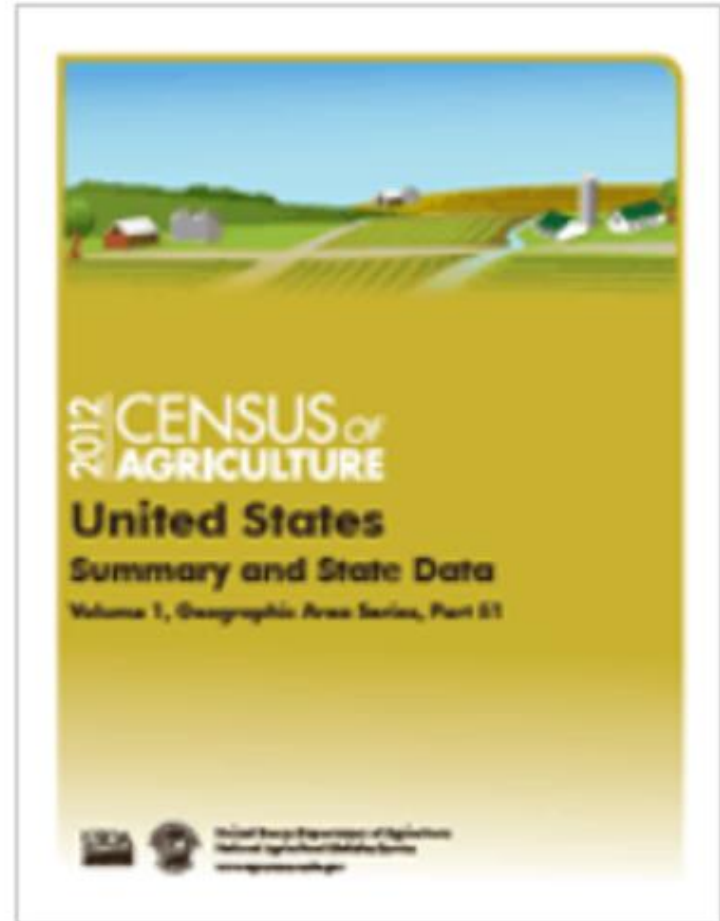


New Jersey Land in Farms, 1950 to 2015

(1,000 acres)



- Census reports for each State, Nation, and outlying areas



2012 Census of Agriculture

Agriculture counts and NASS counts for U.S. Agriculture



What Does NASS Do?

- Administer USDA's Statistical Estimating Program and the 5-year Census of Agriculture
- Coordinate Federal/State Agricultural Statistical needs
- Statistical consulting for other Federal/State or private organizations and other countries
- Statistical Research

George Washington himself conducted first Ag. Survey

Purposed National Board of Agriculture

1839 Comm. of Patents - \$1,000 seeds, Research, Ag Stats

1840 Census of Agriculture

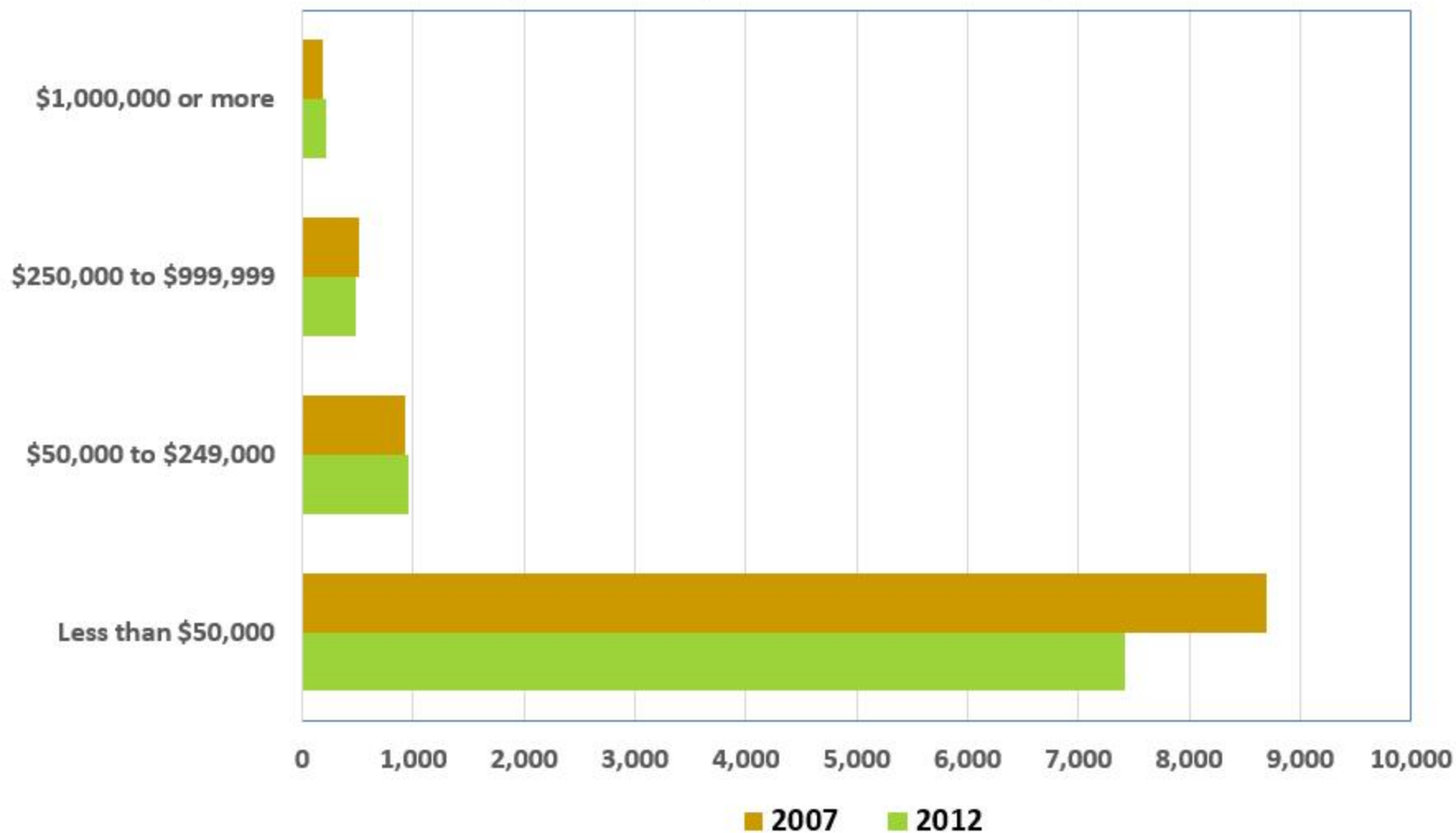
Abe Lincoln created 'the people's department'

Division of Statistics

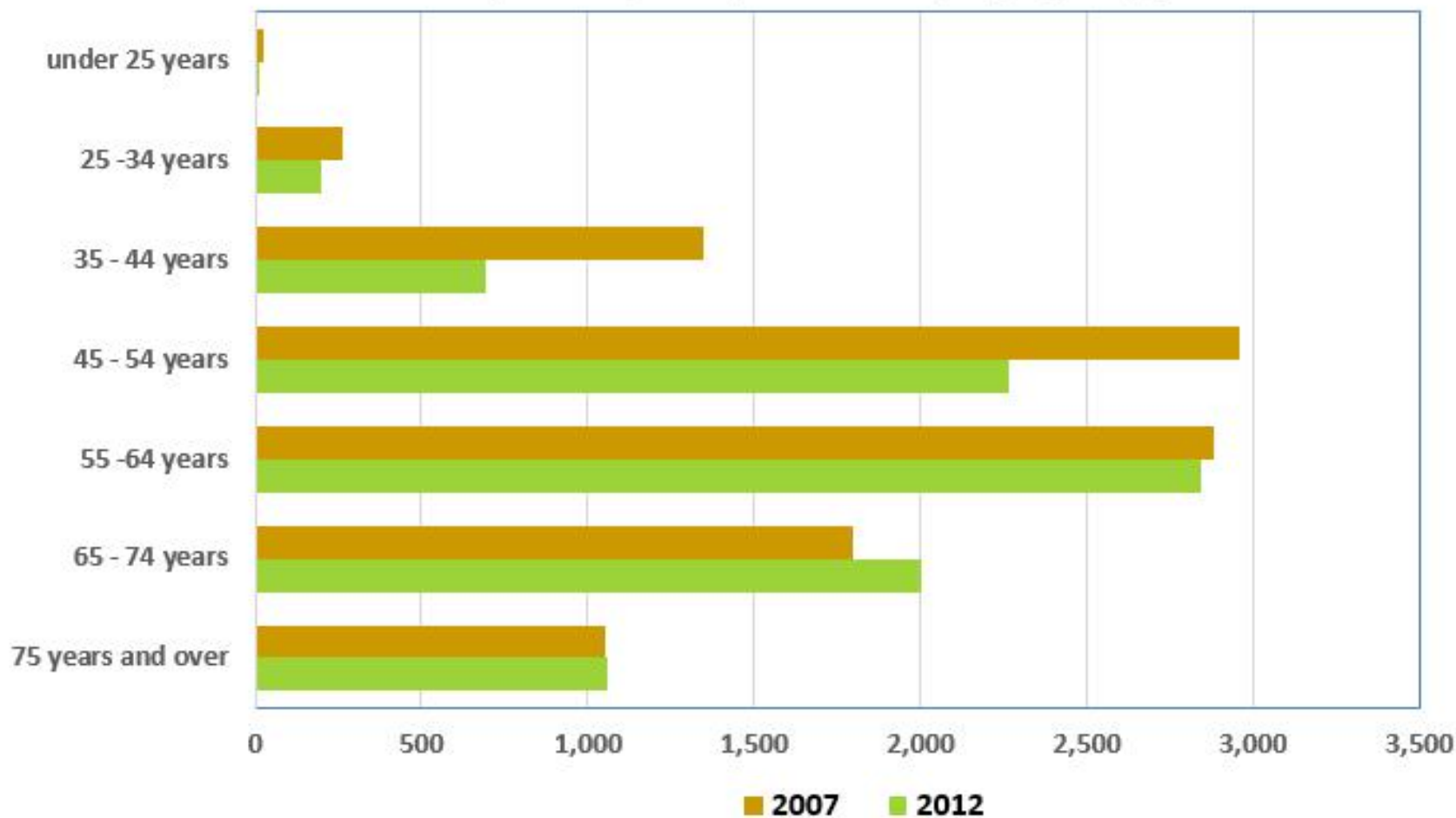
First crop report 1863

Crop Reporting Board (now called the Agricultural Statistics Board) 1905

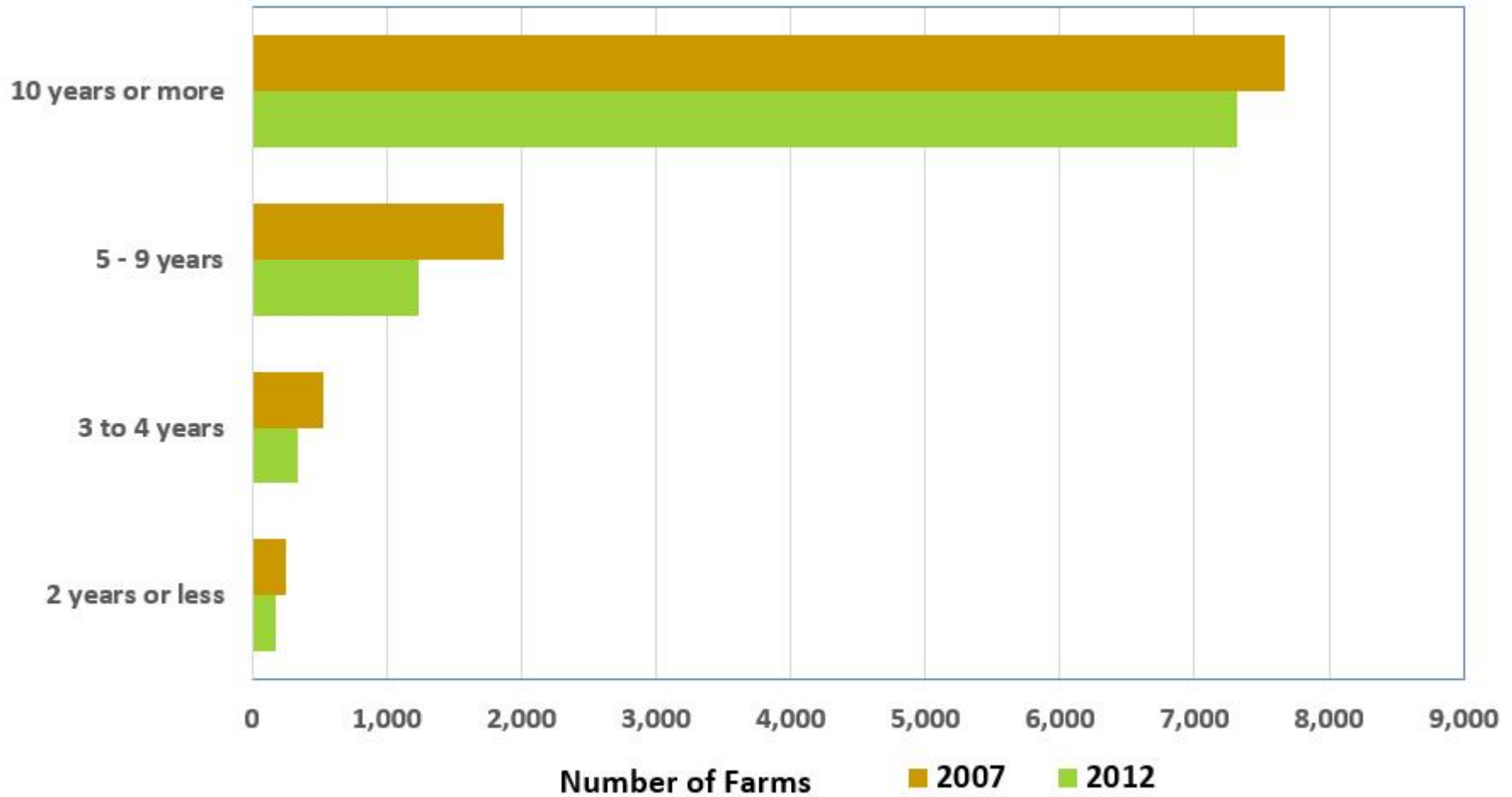
New Jersey Farms by Economic Class, 2007 & 2012



New Jersey Principal Operators by Age group, 2007 & 2012



Principal Operators by Years on Current Operations New Jersey: 2007 and 2012



Land Values

Farm Real Estate

Cropland

Pasture

CA	\$7,700	\$10,690	\$2,700
NM	510	1,400	340
IA	8,000	8,200	3,400
RI	13,800	----	-----
NJ	13,000	13,500	13,500
NE	5,020	5,330	3,480

Cash Rents

- Cropland , Irrigated, non irrigated, pastureland
- Quick Stats
 - State estimates the first week of August
 - County estimates the second week of September
 - Biannually

2015: US \$144/acre NJ \$67/acre

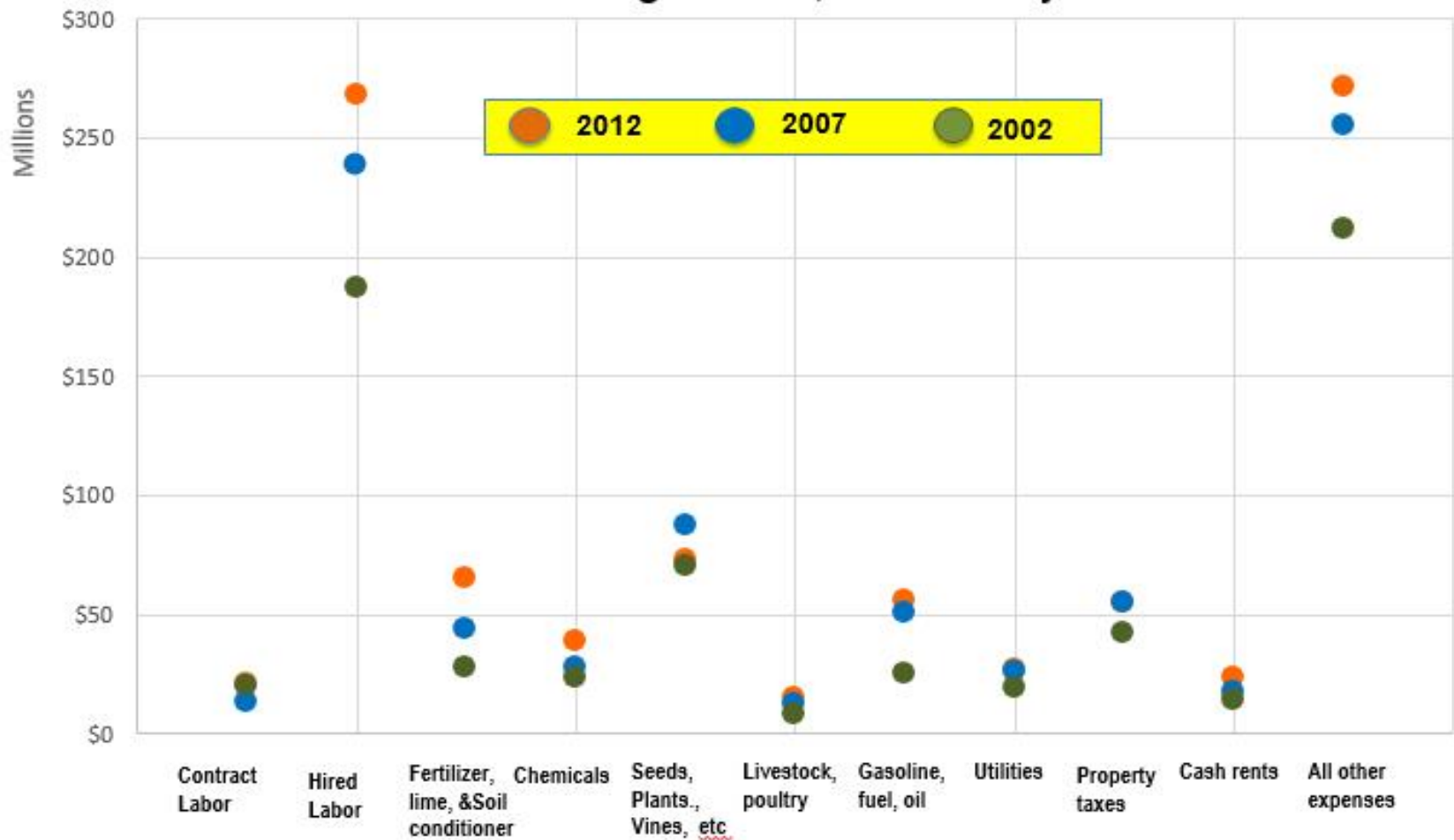
Percentage of Farms with Women Principal Operators in Tri-States and U.S

Census of Agriculture: 2002, 2007, and 2012

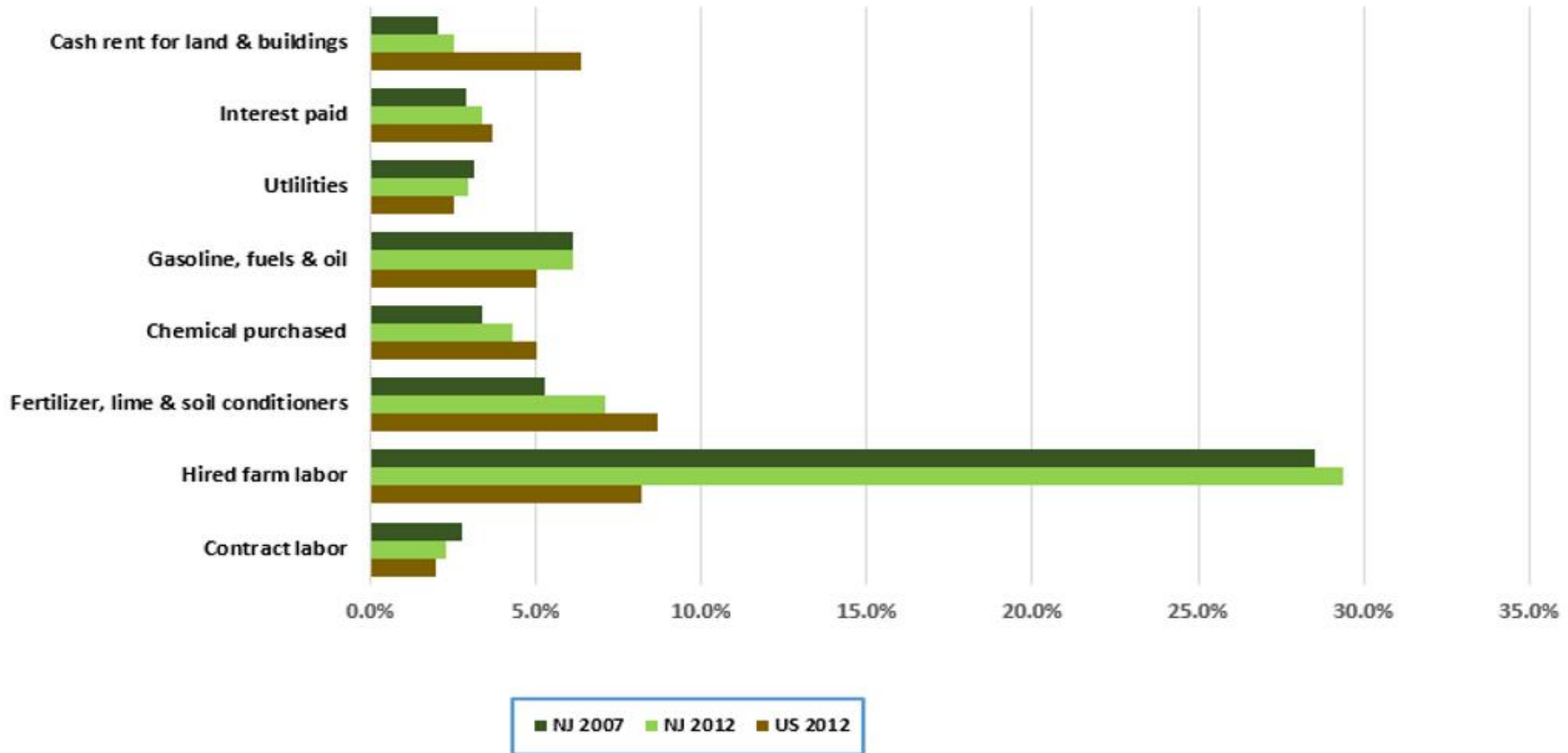


Selected Farm Production Expenses

Census of Agriculture, New Jersey



2012 Farm Production Expenditures: Percent of Total -Selected Expenses Census of Agriculture, NASS, USDA



NJ Vegetables, Harvested Acres, as Percent of Harvested Cropland, 2012



Show State mask

Percent

- Less than 1
- 1 - 4
- 5 - 14
- 15 - 24
- 25 - 49
- 50 or more

NASS map ID: 12-M340

▶ Select Map to Display



Other 2012 Census of Agriculture Products

- Desktop Data Query Tool
- Agricultural Atlas
- Ag Census Web Maps
- Ag Census Highlights



Other 2012 Census of Agriculture Products - continued

- American Indian Reservations
- Watersheds
- Typology
- Special Organics Tabulation
- Years on Present Farm of Principal Operator



2012 Census of Agriculture Follow on Surveys

- 2013 Census of Aquaculture
- 2013 Farm and Ranch Irrigation Survey
- 2014 Census of Horticulture Specialties
- 2014 Organic Production Survey
- 2014 Tenure, Ownership and Transition of Agriculture Land





Data Collection

- Producers
- Objective measurement
- Remote sensing



Producers

Voluntarily Reporting for most reports

Mail, Telephone, Personal Interviews, Internet

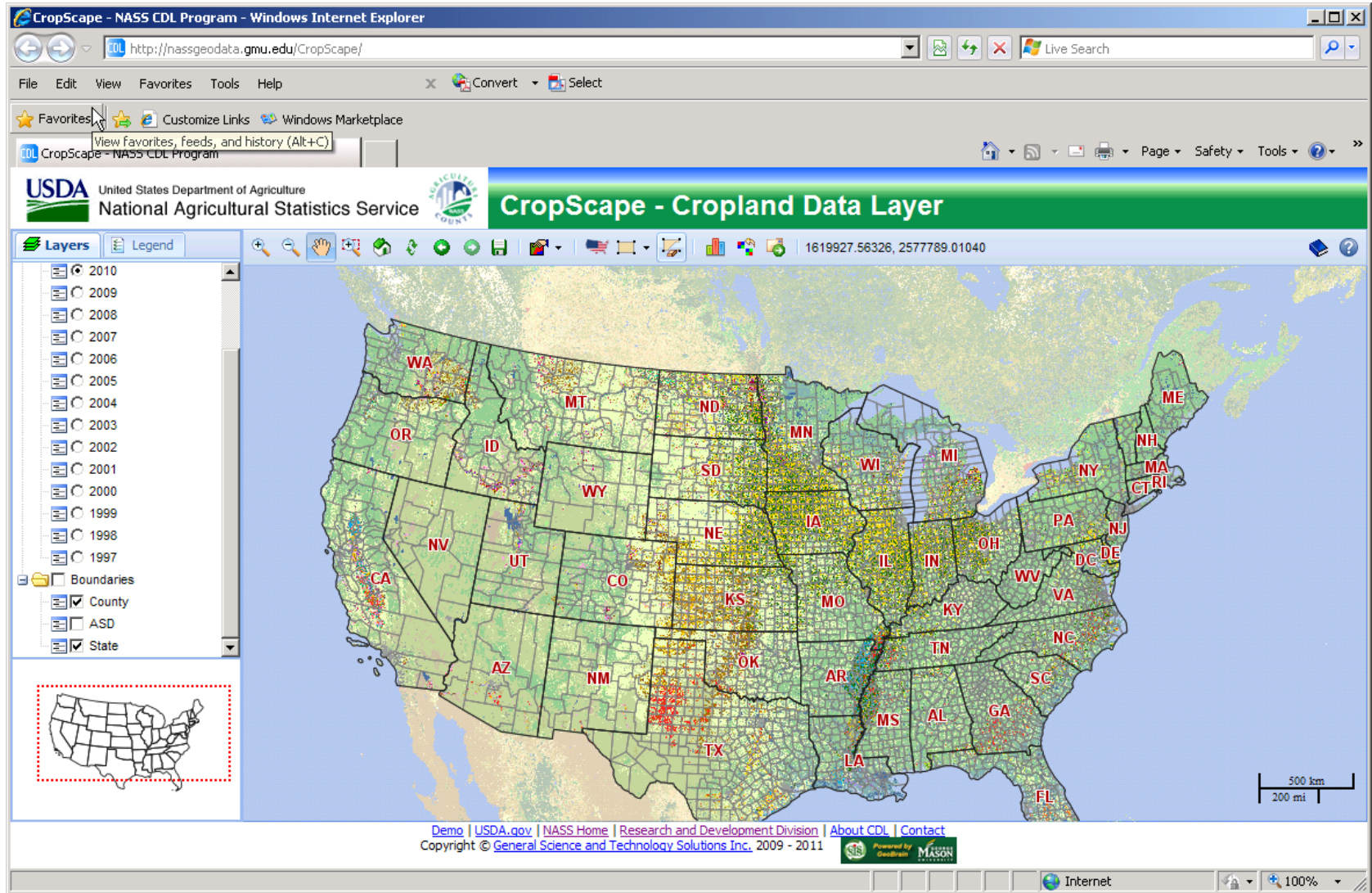
Mandatory Reporting

Cold Storage plants with Dairy Products

CAIR, Census of Agriculture



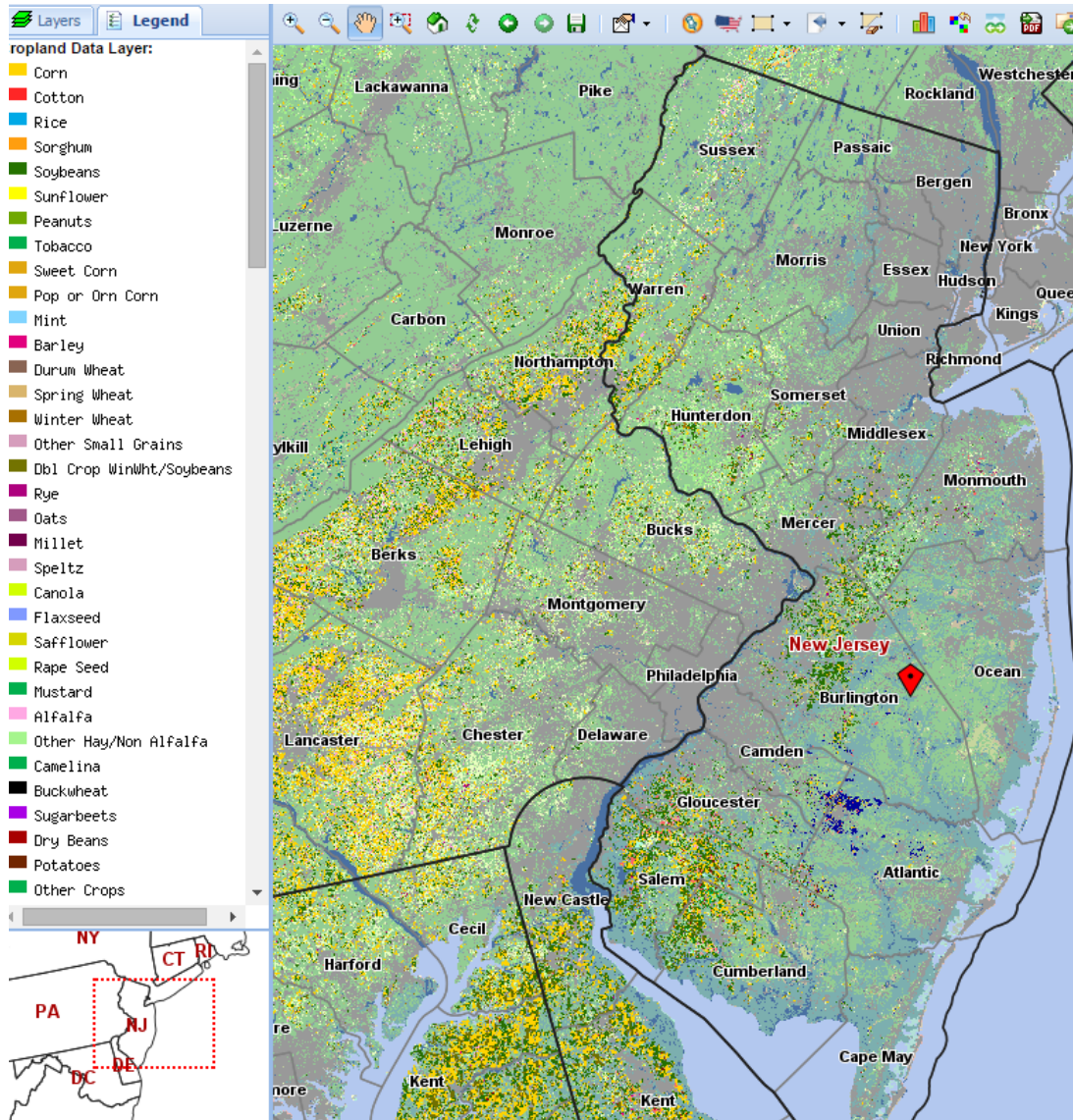
Remote sensing



Agriculture counts and NASS counts for U.S. Agriculture



New Jersey Cropland Layer



Layers Legend

- Background Layers
- Cropland Data Layers
 - 2015
 - 2014
 - 2013
 - 2012
 - 2011
 - 2010
 - 2009
 - 2008
 - 2007
 - 2006
 - 2005
 - 2004
 - 2003
 - 2002
 - 2001
 - 2000
 - 1999
 - 1998
 - 1997
- Crop Mask Layer
- Crop Frequency Layers
- Boundary Layers
- Water Layers
- Road Layers

High Profile Uses of NASS Data

U.S. principle economic indicators

Farm Bill counter-cyclical payments

Disaster payment determination

Group Risk policy payments and premiums

Livestock compensation program

EPA risk analysis in re-registration of chemicals

Levels the playing field for commodity markets





Other Uses of NASS Data

Farm business plans

Local lenders

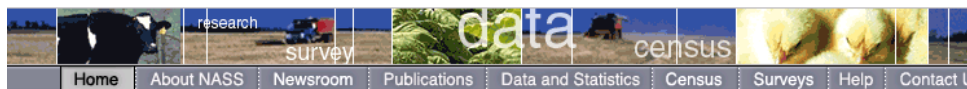
Grants

Policy issues

Local, State, Federal, International



Access reports at www.nass.usda.gov



Search NASS

Google™ Custom Search

All NASS

- Advanced Search
- Search Tips

Browse NASS by Subject

- Crops and Plants
- Demographics
- Economics and Prices
- Environmental
- Livestock and Animals
- Charts and Maps
- Research and Science
- Education and Outreach

Statistics by State

Select a State

You are here: [Home](#) /

Due to scheduled systems maintenance, visitors to NASS's website may experience interruptions in service from 7:00 AM EST, Saturday, March 31st, 2012 through 3:00 PM EST Sunday, April 1st, 2012.

Today's Reports from NASS

Mar 30, 2012

- Dairy Products Prices**
Released at 08:30 A.M. ET [Text](#) | [PDF](#) | [CSV](#)
- Grain Stocks**
Released at 08:30 A.M. ET [Text](#) | [PDF](#) | [CSV](#)
- Prospective Plantings**
Released at 08:30 A.M. ET [Text](#) | [PDF](#) | [CSV](#)
- Rice Stocks**
Released at 08:30 A.M. ET [Text](#) | [PDF](#) | [CSV](#)
- Egg Products**
Released at 3:00 P.M. ET [Text](#) | [PDF](#) | [CSV](#)
- Honey**
Released at 3:00 P.M. ET [Text](#) | [PDF](#) | [CSV](#)
- Peanut Prices**
Released at 3:00 P.M. ET [Text](#) | [PDF](#) | [CSV](#)
- Quarterly Hogs and Pigs**
Released at 3:00 P.M. ET [Text](#) | [PDF](#) | [CSV](#)

Headlines

- [Get to Know NASS Statistics](#)
- [USDA Expects 75-year-high Corn Acreage in 2012](#)

I Want To...

- Make sure I'm counted
- Respond to NASS surveys online
- Ask a specialist
- Request a special tabulation
- Submit Feedback on the Chemical Use program
- Find charts or maps or geospatial data
- Learn about career opportunities
- Find North American agricultural statistics

Find NASS Publications

- Today's Reports
- Date
- Subject
- Keyword
- Release Day
- Title
- Browsing our Guide to Products and Services

Follow NASS

[Twitter](#) [YouTube](#) [RSS](#) [Flickr](#) [Facebook](#)

Receive reports by Email

National | State | News



Smattering of uses

- Level the playing field
- Importance of Agriculture
- Local information – no moderation in appetite
- Conservation on natural resources
- Pesticide use
- Policy impact on farms and rural America
- Trends
- Administer farm programs



Quick Stats - Download historic data for most commodities



Quick Stats

Navigation History:

Select Commodity (one or more)

Program:

CENSUS
SURVEY

Sector:

ANIMALS & PRODUCTS
CROPS
DEMOGRAPHICS
ECONOMICS
ENVIRONMENTAL

Group:

ANIMAL TOTALS
AQUACULTURE
CROP TOTALS
DAIRY
EXPENSES
FARMS, LAND & ASSETS
FERTILIZER & CHEMICALS
FIELD CROPS
FRUIT & TREE NUTS

Commodity:

AG LAND
AG SERVICES
AG SERVICES & RENT
AGRI-TOURISM & RECREATIONAL SERVICES
ALMONDS
ALPACAS
AMARANTH
ANIMAL SECTOR
ANIMAL TOTALS

Select Location (one or more)

Geographic Level:

AGRICULTURAL DISTRICT
COUNTY
INTERNATIONAL
NATIONAL
REGION : MULTI-STATE
REGION : SUB-STATE
STATE
ZIP CODE



www.agcensus.usda.gov

The screenshot shows the USDA Census of Agriculture website homepage. At the top, there is a navigation bar with links for 'USDA', 'NASS Home', 'Data Quality', 'Help', and 'Contact Us'. Below this is the main header with the 'USDA CENSUS OF AGRICULTURE' logo and the text 'United States Department of Agriculture'. A secondary navigation bar contains 'About the Census', 'Newsroom', 'Publications', and 'Your Census. Your Story.'. On the right side, there is a 'Google Custom Search' box and links for 'Site Map', 'Search Tips', and 'Translate'.

The main content area features a large video player with a play button and the text 'LEARN HOW TO USE QUICK STATS TO RETRIEVE CENSUS DATA'. To the left of the video is a 'Popular Topics' section with links to '2012 Census Results', 'Frequently Asked Questions', 'Infographics', 'State and County Data', 'Desktop Query Tool', 'Historical Census Data', and 'Partner Tools'. Below this is a 'More...' link and social media icons for Twitter, YouTube, RSS, Flickr, and Facebook. To the right of the video is a 'Quick Stats Tutorial Video' section with a description: 'Finding the agricultural data you need is simple! Quick Stats is the easy-to-use database to help you find ag survey and census data quickly. Watch how easy it is to get started.' Below the video player are navigation controls showing '2/5' and arrows.

Below the video player, there are several content sections:

- Headlines:** A list of recent news items, including 'BLOG: A Census Story from Benton County, Mississippi', 'USDA Announces Release Date for the Final 2012 Census of Agriculture Report', 'SECRETARY'S COLUMN: Census of Agriculture Results Tell Story of Unlimited Potential in Rural America', '2012 Census of Agriculture Preliminary Results Show Growing Farm Economy', 'BLOG: How Does Ag Census Work?', 'USDA to Release Census of Agriculture Data on February 20', and 'USDA Reminds Producers to Return their Census of Agriculture Forms'.
- Latest Tweets:** A section for recent tweets, currently empty.
- Factsheets:** A list of topics including 'Demographics', 'Economics', 'Farm Numbers', 'Geographic Practices', and 'Production'.
- Find Data By:** A list of search criteria including 'Congressional District', 'Historical Census Year', 'Race, Ethnicity & Gender', 'State & County', and 'ZIP Code'.
- Respond Online:** A list of interactive tools including 'Confidentiality and Security', 'Census of Aquaculture', 'Farm and Ranch Irrigation Survey', 'Quick Stats', and 'Ag Atlas Maps'.

At the bottom of the page, there is a green banner that says 'GET THE NEW 2012 AG CENSUS DATA'.

Agriculture counts and NASS counts for U.S. Agriculture

Missing data

- Item imputation
 - Missing Records/Misclassification
 - Must Cases
- Calibration

How do we know what we do not know?



Locations

HQ in Washington, DC

National Operations Center in Olivette, MO

12 Regional Field Offices

Harrisburg, PA

Des Moines, IA

Little Rock, AK

Louisville, KY

Sacramento, CA

East Lansing, MI

Denver, CO

Lincoln, NE

Athens, GA

Olivette, MO

•33 other Field Offices

Need Help?

www.nass.usda.gov

www.nass.usda.gov/nj

Bruce Eklund

Bruce.eklund@nass.usda.gov

503.308.0404