

# Redistricting

---

**New Jersey State Data Center  
Annual Network Meeting**

Jennie Karalewicz  
Redistricting and Voting Rights Data Office  
U.S. Census Bureau

October 5<sup>th</sup>, 2023

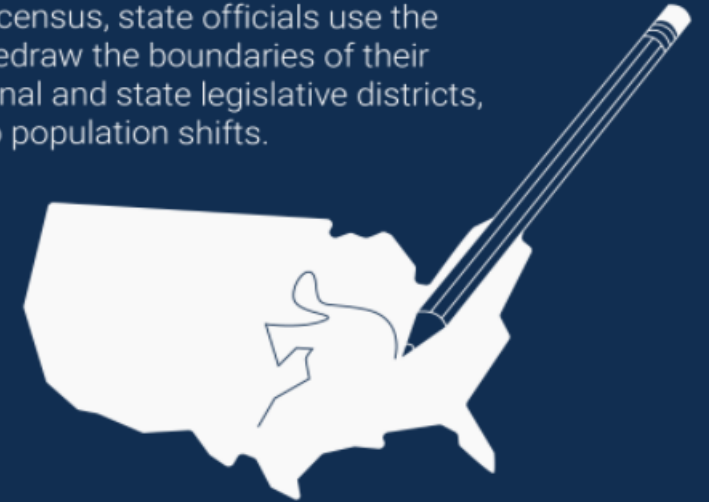
# Agenda

Section 1. The 2020 Redistricting Data Program (RDP) Revisited

Section 2. 2020 Redistricting Data and Products

Section 3. Preview of 2030 RDP

After each census, state officials use the results to redraw the boundaries of their congressional and state legislative districts, adapting to population shifts.



# The 2020 Redistricting Data Program Revisited

## The 2020 RDP was conducted through five phases and in accordance with Public Law 94-171 (P.L. 94-171)

### Requirements:

- Conduct the program in a non-partisan manner
- Establish program criteria
- Identify required tabulations and geographic areas
- Deliver the tabulations to the governor and the officers or public bodies having initial responsibility for the legislative apportionment or districting of each state no later than 1 year from Census Day\*

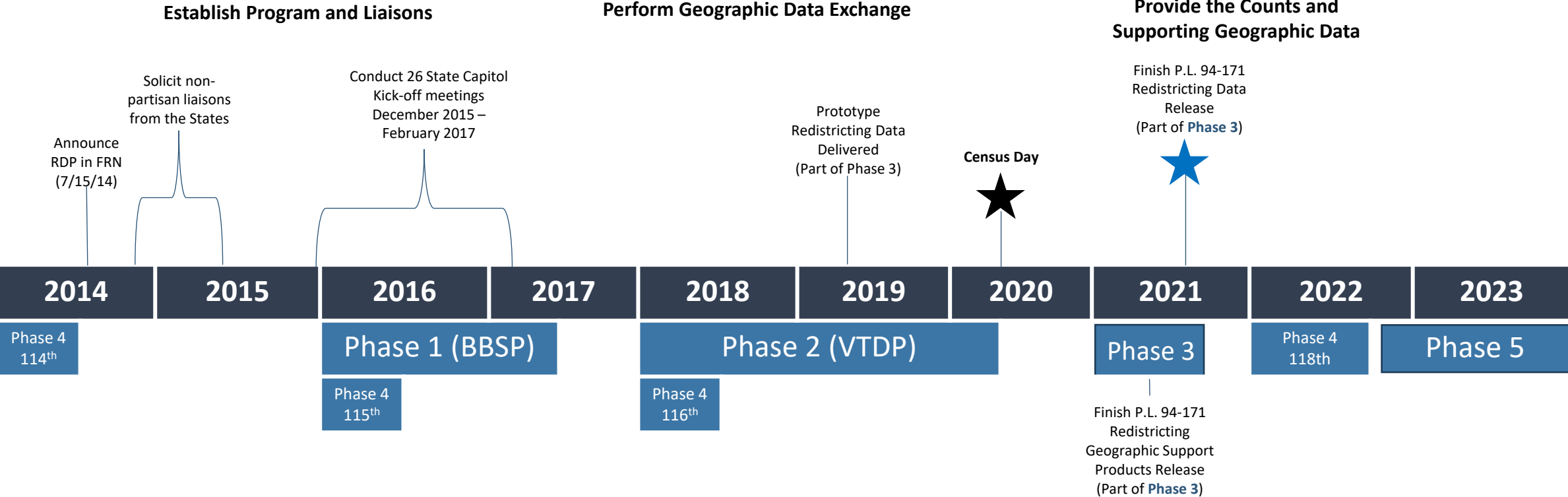
### Identified “geographic areas needed”:

- Census Tabulation Blocks
- Voting Districts (e.g., precincts, wards, etc.)
- Legislative and Congressional Districts

\*Delays related to the COVID-19 pandemic and changes in 2020 Census data processing procedures delayed the Census Bureau’s original plan to deliver the redistricting data to the states by March 31, 2021.

# 2020 Census Redistricting Data Program

## Program Activities Timeline



**Five Phases of the 2020 Redistricting Data Program (RDP)**

- Phase 1 – The Block Boundary Suggestion Project (BBSP)
- Phase 2 – The Voting District Project (VTDP)
- Phase 3 – Delivery of the P.L. 94-171 Redistricting Data and Geographic Support Products
- Phase 4 – The Collection of Congressional and State Legislative Districts (CD/SLD)
- Phase 5 – The Review of the 2020 RDP and the Look-ahead to the 2030 RDP (The View from the States)



# 2020 RDP Phase 4: Collection of Post-2020 Census Redistricting Plans

Collection of Plans for the 118<sup>th</sup> CDs and 2022 SLDs from January – July 2022

- Released Geographic Products
- ACS Data Profiles
- 2020 Census 118<sup>th</sup> Congressional District Summary File
- ACS 1-Year release for CDs in Sept 2023
- ACS 5-Year release for CD/SLDs in Dec. 2023
- Collection of new plans planned every two years
  - 119<sup>th</sup> CDs/2024 SLDs from November 2023 – April 2024

## 118th Congressional Districts

2021 ACS 1-Year Data Profiles

Select a state to begin. ▾

## 2022 State Legislative Districts

2017-2021 ACS 5-Year Data Profiles

Select a state to begin. ▾

# Phase 4 Collection Schedule through 2030

CD Session	SLD Session	Collection Period
119th	2024	November 2023-April 2024
120th	2026	November 2025-April 2026
121st	2028	November 2027-April 2028
122nd	2030	November 2029-April 2030

# Redistricting Data Released in 2021

The 2020 Census Redistricting Data (P.L. 94-171) Summary Files had two releases.

- Both releases contained the same data, only the format was different.

Legacy Files were posted for FTP download, by state, on August 12, 2021.

- Format produced and provided to the states since at least Census 2000.
- Required additional handling to properly extract data from this format.
- Microsoft Access shells, R and SAS import scripts were provided online.

Redistricting toolkit was provided and data was posted to [data.census.gov](https://data.census.gov) on September 16, 2021

- Toolkit included DVD and USB drives
  - The toolkit was mailed to state legislative leadership, redistricting commissions (if applicable), and redistricting liaisons.
  - DVD and USB drives provided an integrated software browsing tool that allowed for intuitive browsing of the data and simple extraction of large datasets.
- Both the toolkit and [data.census.gov](https://data.census.gov) release were designed to be easier to use for data users.

# Geographic Products

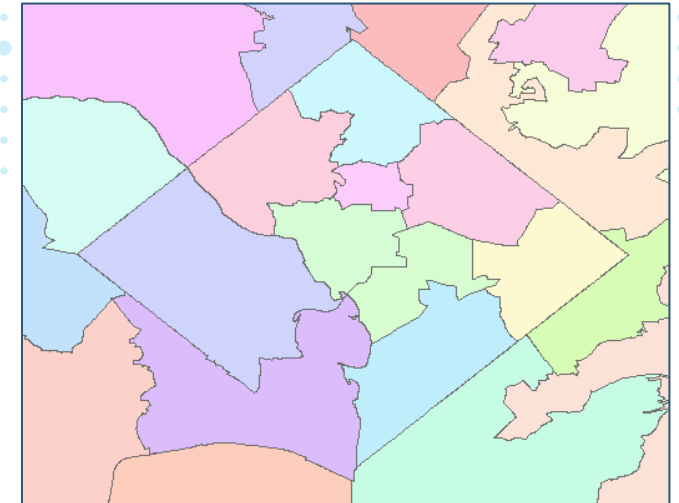
## Block Equivalency Files

GEOID	SLDUST
110010001011000	002
110010001011001	002
110010001011002	002
110010001011003	002
110010001011004	002
110010001011005	002
110010001011006	002
110010001011007	002
110010001011008	002
110010001011009	002
110010001021000	002
110010001021001	002
110010001021002	002
110010001021003	002
110010001021004	002
110010001021005	002

## Split Block Listings

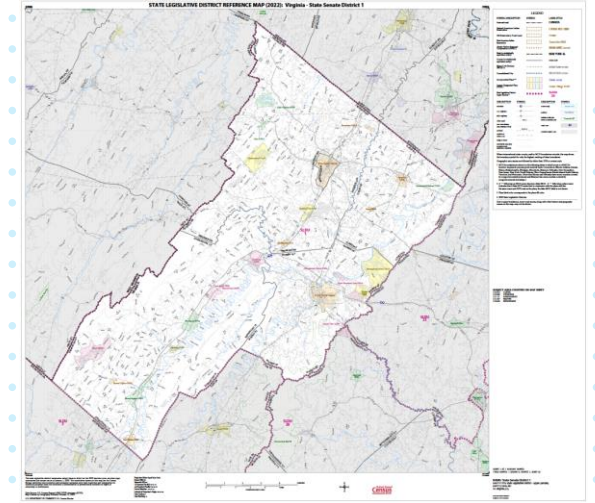
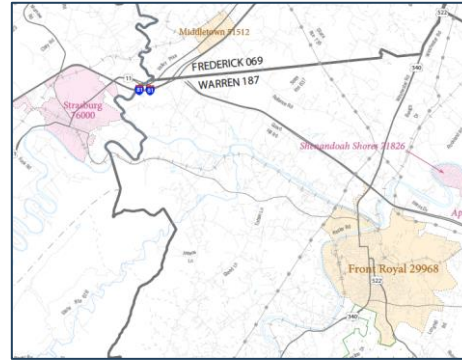
State Name	State Code	County Name	County Code	Tract Code	Block Code	GEOID	SLDUs Within Block	Data Tabulated with SLDU
Colorado	08	Adams	001	009001	2030	080010090012030	021, 024	021
Colorado	08	Adams	001	009607	2000	080010096072000	019, 021	021
Colorado	08	Delta	029	965002	1004	080299650021004	005, 007	005
Colorado	08	Delta	029	965002	1013	080299650021013	005, 007	005
Colorado	08	Douglas	035	013914	2006	080350139142006	002, 004	004
Colorado	08	Douglas	035	013914	2018	080350139142018	002, 004	002
Colorado	08	El Paso	041	004517	2021	080410045172021	012, 035	012
Colorado	08	El Paso	041	004603	3051	080410046033051	011, 035	011
Colorado	08	Garfield	045	951902	4035	080459519024035	005, 008	008
Colorado	08	Weld	123	000703	1028	081230007031028	001, 013	013
Colorado	08	Weld	123	000705	2044	081230007052044	001, 013	013
Colorado	08	Weld	123	001914	1072	081230019141072	001, 013	013
Colorado	08	Weld	123	002105	1054	081230021051054	017, 023	023
Delaware	10	New Castle	003	014705	1002	100030147051002	009, 011	011
Minnesota	27	Hennepin	053	026103	2000	270530261032000	049, 046	046

## Shapefiles and Geodatabases



# Geographic Products

## Maps



## Relationship Files

OID_SLDU2022_20	GEOID_SLDU2022_20	NAMELSAD_SLDU2022_20	AREALAND_SLDU2022_20	AREAWATER_SLDU2022_20	MTFCC_SLDU2022_20	FUNCSTAT_SLDU2022_20	OID_AIANNH_20	GEOID_AIANNH_20	NAMELSAD_AIANNH_20	AREALAND_AIANNH_20	AREAWATER_AIANNH_20	MTFCC_AIANNH_20	CLASSFP_AIANNH_20	FUNCSTAT_AIANNH_20	AREALAND_PAR	AREAWATER_P
2129031807778363	01001	State Senate District 1	2640878076	171747869	G5210	N									2640878076	171747869
2129031807778365	01002	State Senate District 2	353287142	1848465	G5210	N									311565939	1710636
2129031807778365	01002	State Senate District 2	353287142	1848465	G5210	N	2519065184707	9680	Echota Cherokee SDTSA	1318524861	7811751	G2150	D9	S	41721203	137829
2129031807778367	01003	State Senate District 3	1855473376	116843346	G5210	N									1855473376	116843346
2129031807778368	01004	State Senate District 4	5413280343	104587579	G5210	N									5412208463	104585124
2129031807778368	01004	State Senate District 4	5413280343	104587579	G5210	N	2519065184707	9680	Echota Cherokee SDTSA	1318524861	7811751	G2150	D9	S	1071880	2455
2129031807778370	01005	State Senate District 5	7446354424	104879453	G5210	N									7446354424	104879453
2129031807778373	01006	State Senate District 6	5157634768	201418117	G5210	N									4148426882	195026450
2129031807778373	01006	State Senate District 6	5157634768	201418117	G5210	N	2519065184707	9680	Echota Cherokee SDTSA	1318524861	7811751	G2150	D9	S	1009207886	6391667
2129031807778375	01007	State Senate District 7	671422491	2985519	G5210	N									627257152	2918941
2129031807778375	01007	State Senate District 7	671422491	2985519	G5210	N	2519065184707	9680	Echota Cherokee SDTSA	1318524861	7811751	G2150	D9	S	44165339	66578
2129031807778376	01008	State Senate District 8	4732113529	132777820	G5210	N									4544963187	131634617
2129031807778376	01008	State Senate District 8	4732113529	132777820	G5210	N	2519065184707	9680	Echota Cherokee SDTSA	1318524861	7811751	G2150	D9	S	187150342	1143203

# 118<sup>th</sup> CD and 2022 SLD American Community Survey Data Profiles

The American Community Survey (ACS) data profiles contain social, economic, housing, and demographic statistics for the 118th CDs created from the 2021 ACS 1-year estimates and 2022 SLDs created from the 2017-2021 ACS 5-Year estimates.

The four data profiles are available through a web-based lookup tool on the ACS website and on the Census Bureau's FTP site. The My Congressional District app has also been updated for the 118th Congress.

- Social profile (e.g., education, marital status, relationships, fertility, grandparents)
- Economic profile (e.g., income, employment, occupation, commuting to work)
- Housing profile (e.g., occupancy and structure, housing value and costs, utilities)
- Demographic profile (e.g., sex and age, race, Hispanic origin, housing units)

# 118th Congressional District Summary File

## August 2023 Release

The 118th Congressional District Summary File (CD118) contains data for congressional and state legislative districts compiled from the questions asked of all people and about every housing unit in the 2020 Census.

Population items include age, sex, race, Hispanic or Latino origin, household type, family type, relationship to householder, group quarters population, housing occupancy and housing tenure (whether a housing unit is owner-occupied or renter-occupied).

The file contains subject content identical to that shown in the 2020 Census Demographic and Housing Characteristics File (DHC), which was released in May 2023, but only includes geographies related to the 118th Congressional and the 2022 State Legislative Districts.

# 118th Congressional District Summary File

## August 2023 Release

Summary Levels provided for the congressional districts and state legislative districts (upper and lower) and their interactions with the following other geographies:

- State
- County
- Census Tract
- County Subdivision
- Place
- Consolidated City
- American Indian, Alaska Native and Native Hawaiian (AIANNH)
- Alaska Native Regional Corporation (ANRC)

# Content changes from last decade's Congressional District Summary File

There were two major content changes between the 2010 (113<sup>th</sup> through the 116<sup>th</sup>) and 2020 (118<sup>th</sup> through the 121<sup>st</sup>) Congressional District Summary Files:

- The 2010, the Congressional District Summary File retabulated data from the 2010 Census Summary File 1 .
  - For 2020, the 118<sup>th</sup> Congressional District Summary File and onward will retabulate data from the 2020 Demographic and Housing Characteristics File.
- State legislative districts are now included in the 118<sup>th</sup> Congressional District Summary File (and in future files) and they were not included in the 113<sup>th</sup> Congressional District Summary File.

# Plans for releases of subsequent Congressional District Summary Files

- If additional boundary changes are reported for future congressional sessions, this product is regenerated to those new boundaries.
- If no boundary changes for a future congressional session are reported, the previously generated congressional district file is used, and no re-tabulation is created.
  - 119<sup>th</sup> Congressional District Summary File (if needed)
    - Planned data release: December 2024
  - 120<sup>th</sup> Congressional District Summary File (if needed)
    - Planned data release: December 2026
  - 121<sup>st</sup> Congressional District Summary File (if needed)
    - Planned data release: December 2028

# Future ACS Data Release Timing for new CD and SLD data

CD Session	SLD Year	ACS 1-Year for CDs	ACS 5-Year for CDs/SLDs
118th	2022	September 2023	December 2023
119th	2024	September 2025	December 2025
120th	2026	September 2027	December 2027
121st	2028	September 2029	December 2029
122nd	2030	September 2031	December 2031

# Citizen Voting Age Population (CVAP) tabulation

The Citizen Voting Age Population (CVAP) Special Tabulation comes from the 5-Year American Community Survey estimates and are available for the following geographies:

- Nation
- State
- Congressional District
- State Legislative District (Upper House & Lower House)
- County
- Place
- MCD (Minor Civil Division - only for CT, MA, ME, MI, MN, NH, NJ, NY, PA, RI, VT, and WI),
- Tract
- Block Groups

# Citizen Voting Age Population (CVAP) tabulation

118<sup>th</sup> Congressional Districts/2022 State Legislative Districts – Early 2024

119<sup>th</sup> Congressional Districts/2024 State Legislative Districts – Early 2026

120<sup>nd</sup> Congressional Districts/2026 State Legislative Districts – Early 2028

121<sup>st</sup> Congressional Districts/2028 State Legislative Districts – Early 2030

122<sup>nd</sup> Congressional Districts/2030 State Legislative Districts – Early 2032

# Section 203 Language Determinations

- Language groups covered by Section 203
  - Alaska Native
  - American Indian
  - Asian
  - Spanish/Hispanic/Latino
- New language determinations are published every 5 years.
- Identifies counties or townships where language assistance is needed for voting.
- Calculated using the ACS 5-year estimates and other census data.
- Last published in the Federal Register on December 8, 2021.
- Next publication planned for December 2026.

# RVDO website structure and how to find our data

<http://www.census.gov/rdo>

## Within About

Census in the Constitution

Coverage Measurement

Decennial Census and American Community Survey (ACS)

History of the Census

Local Update of Census Addresses (LUCA) Operation

New Construction Program

Participant Statistical Areas Program (PSAP)

**Redistricting Data Program**

Related Sites

**Voting Rights Data**

Why a Decennial Census?

## Redistricting Data Program

Written by: Redistricting & Voting Rights Data Office (rdo@census.gov or 301-763-4039)

Share



### Data

#### Redistricting Data Program Congressional Districts

February 03, 2023

Guidance and access to information about congressional districts and congressional district products.



#### Redistricting Data Program State Legislative Districts

February 06, 2023

Guidance and access to information about state legislative districts and state legislative district products.



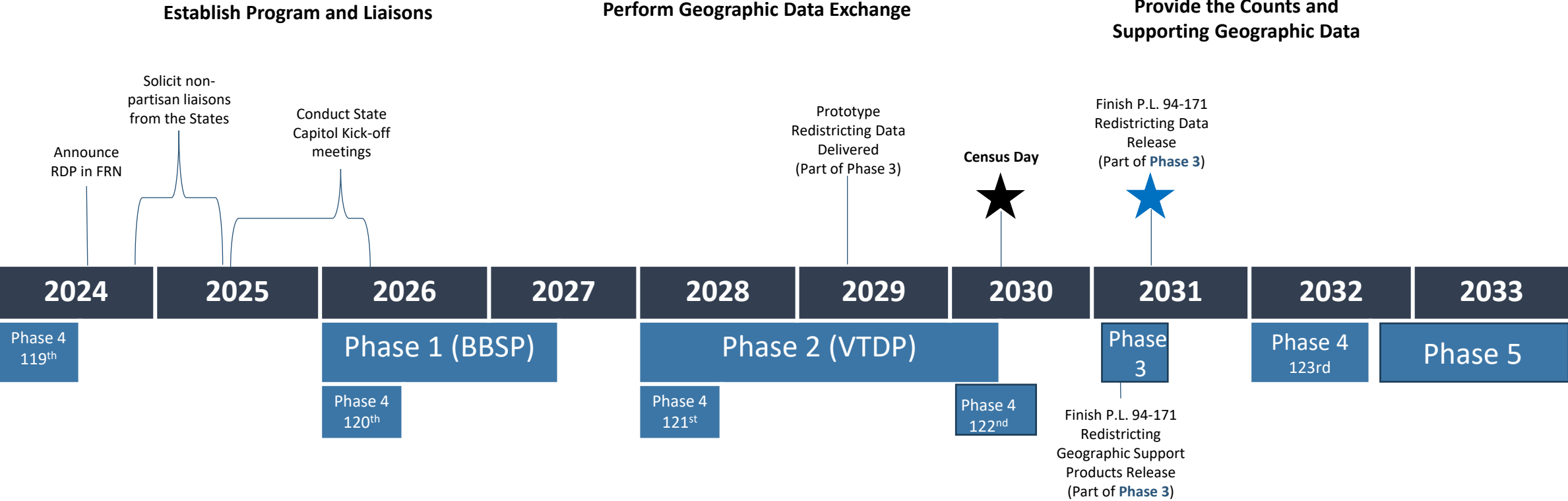
### Related Information

[Redistricting Data Datasets](#)

[Redistricting Data Mapping Files](#)

# 2030 Census Redistricting Data Program

## Program Activities Timeline



### Five Phases of the 2030 Redistricting Data Program (RDP)

- Phase 1 – The Block Boundary Suggestion Project (BBSP)
- Phase 2 – The Voting District Project (VTDP)
- Phase 3 – Delivery of the P.L. 94-171 Redistricting Data and Geographic Support Products
- Phase 4 – The Collection of Congressional and State Legislative Districts (CD/SLD)
- Phase 5 – The Review of the 2030 RDP and the Look-ahead to the 2040 RDP (The View from the States)



# Liaison Solicitation Process

- The program ensures non-partisan participation by having each state assign a non-partisan liaison(s) for an entire decennial cycle.
- The non-partisan liaisons are typically solicited in the year ending in “5”.
- Liaisons are assigned by the governor and the majority & minority leadership in all chambers of the state legislature by a jointly signed letter.
- The non-partisan liaisons typically come from one of these roles: legislative support staff, legislative counsel, secretaries of state, academia, GIS support staff.
- Non-partisan liaisons can deputize additional people to work on their behalf.

# QUESTIONS?



Census Redistricting and Voting Rights Data Office

[rdo@census.gov](mailto:rdo@census.gov)

301-763-4039