

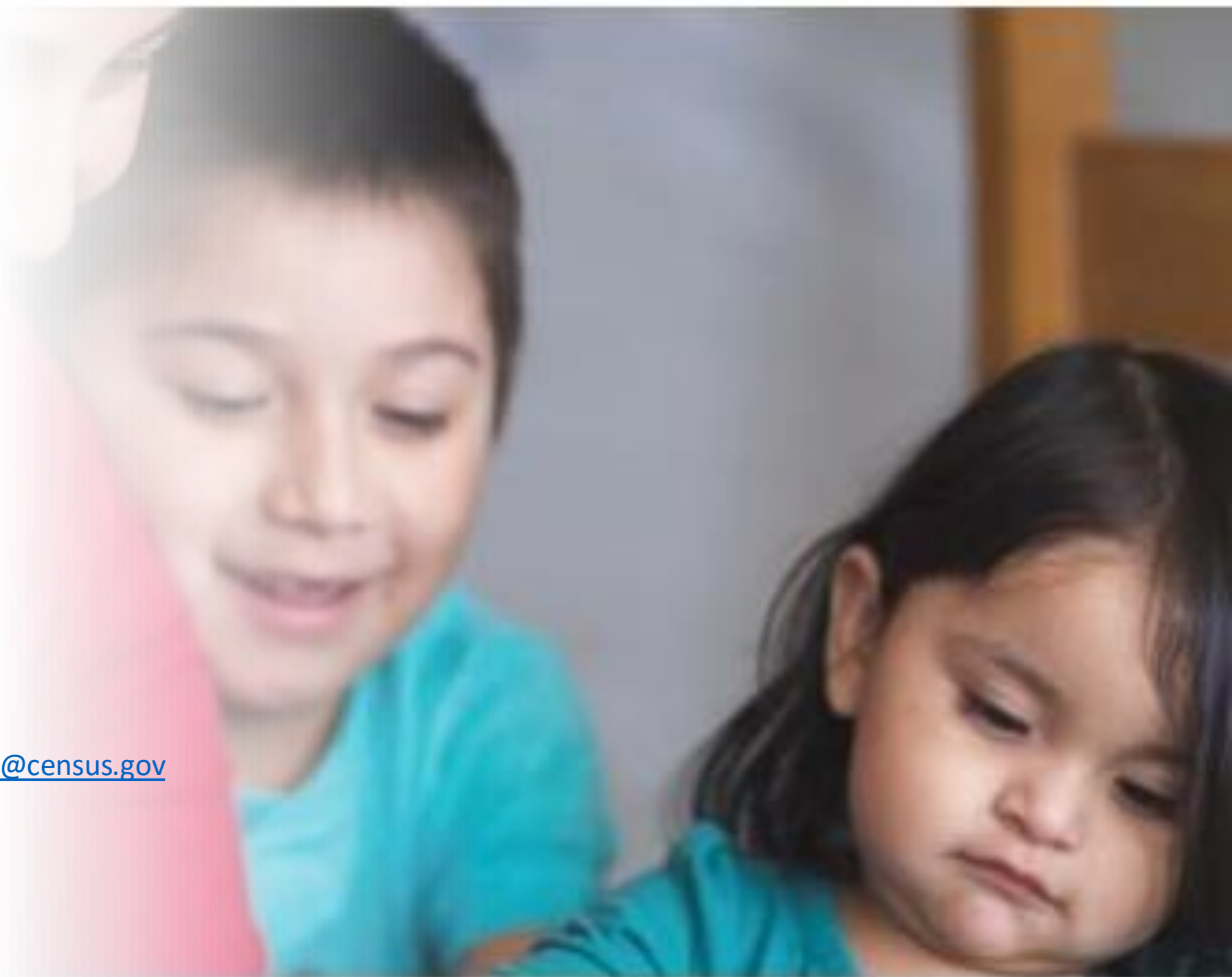
# Tribal Relations Specialist Program

Micki Wildcat

(Navajo/Pawnee/Euchee),

Tribal Relations Specialist

Boulder, CO [michelle.l.wildcat@census.gov](mailto:michelle.l.wildcat@census.gov)



## Tribal Relations Specialist Team



### Shadana Sultan

Oglala Lakota Nation (SD)  
Lives in Denver, CO. Corp & Org Communication & Marketing Western KY Univ, Certificate of Leadership HarvardX. Multi-lingual. Broadcast Media, online, and event marketing experience with ABC, NBC, & Telemundo. Former Executive Director of AIAN nonprofit.



### Charles Tippeconnic

Comanche Nation (OK)  
Lives in Elgin, OK. BS in Petroleum Engineering, Secondary Education program. Mathematics Teaching license. Professional career in the public sector focused on service to Native Americans by working directly for Tribal Governments or with Federal Agencies that serve Tribal Communities



### Michelle Wildcat

Pawnee (OK)  
Lives in Boulder, CO. Attended Haskell University. Served US Census during 2000 Census working Tabulation on Navajo nation and 2020 Census Tribal Recruiting efforts across 5 states in Denver Region. Work experience in Tribal Casinos and at Denver Indian Center. Served as Navajo Voter Registrar



### Alaina Capoeman-Davis

Quinault Nation (WA)  
Lives in Suquamish, WA. BA from The Evergreen State College and upcoming MBA from Gonzaga University. She has served two Decennial Census tours with the Tribal Partnership program. She is active in her canoe family and as a jingle dress dancer.



### Bernadece Boda

Odawa Nation (MI)  
Lives in Laguna Alanson, MI. Management, Criminal Justice, and Social. She has worked within Indian Country for nearly 20 years. She has served as Chairperson for her Tribe's Gaming Authority. She has experience at varying levels of government, including City, State, Tribal and Federal positions.



75 Honor Awards Program

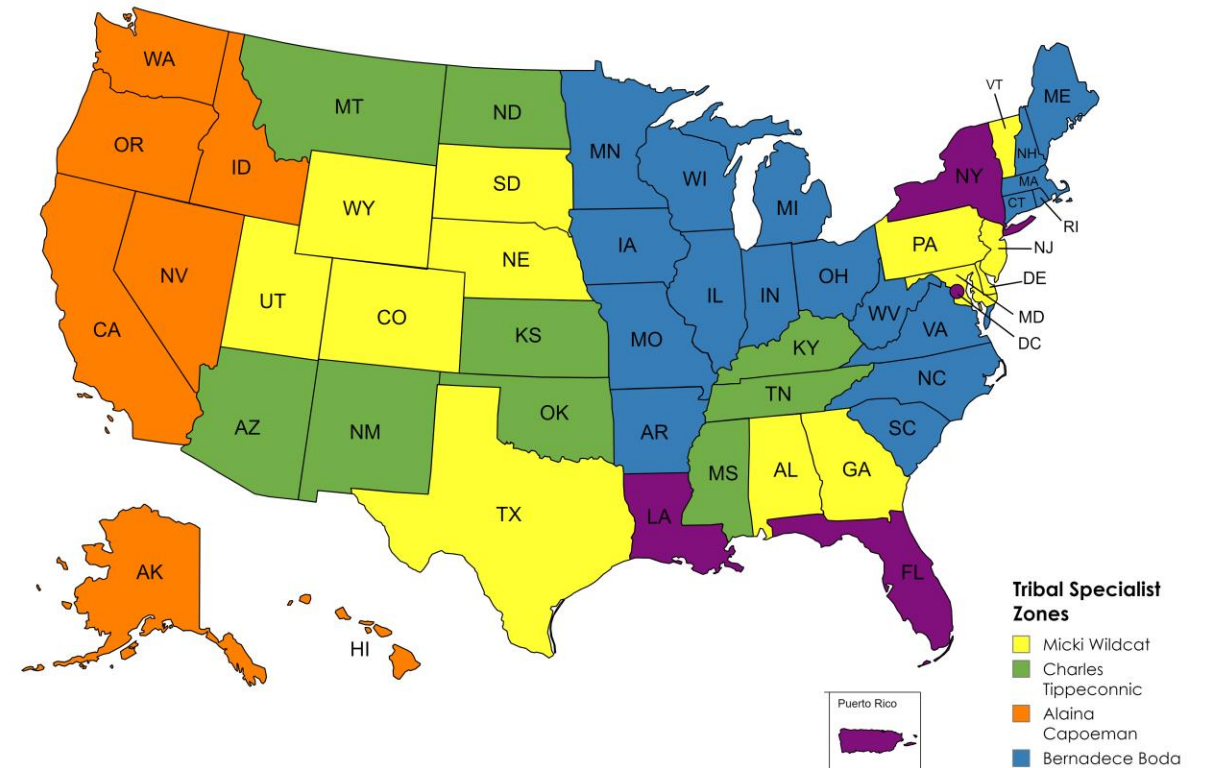


GOLD MEDAL

PERSONAL AND PROFESSIONAL EXCELLENCE

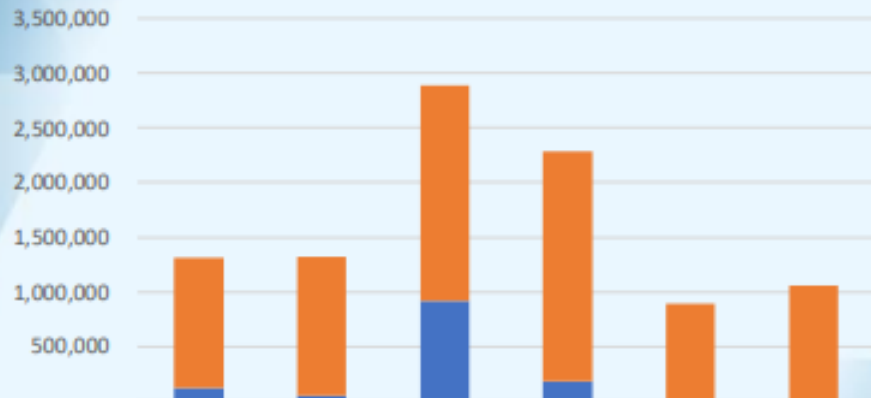
# Tribal Relations Overview

- Tribal Data Tabulation
- Engage Partners
- Updates and resources for ongoing surveys
- Surveys & Upcoming 2030 Census
- Geographic Programs
- Cultural Awareness and Engagement
- Field and other Directorates



# Regional Tribal Numbers

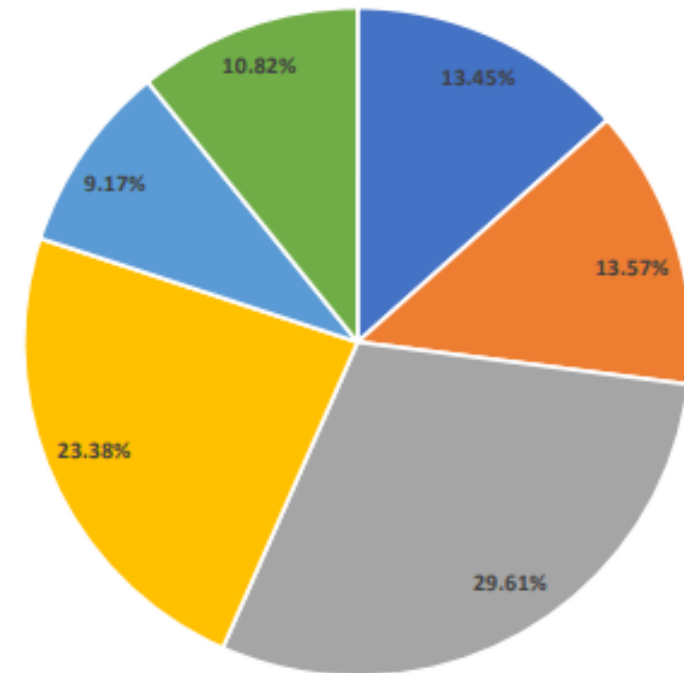
AIAN Distribution by Region - On/Off Tribal Lands



	Atlanta	Chicago	Denver	LA	New York	Philadelphia
AIAN Off Tribal Land 2020 TOTAL	1,188,704	1,273,234	1,969,295	2,102,235	881,942	1,054,677
AIAN on Tribal Land 2020 TOTALS	124,099	50,882	920,036	179,890	12,809	1,149

■ AIAN on Tribal Land 2020 TOTALS    ■ AIAN Off Tribal Land 2020 TOTAL

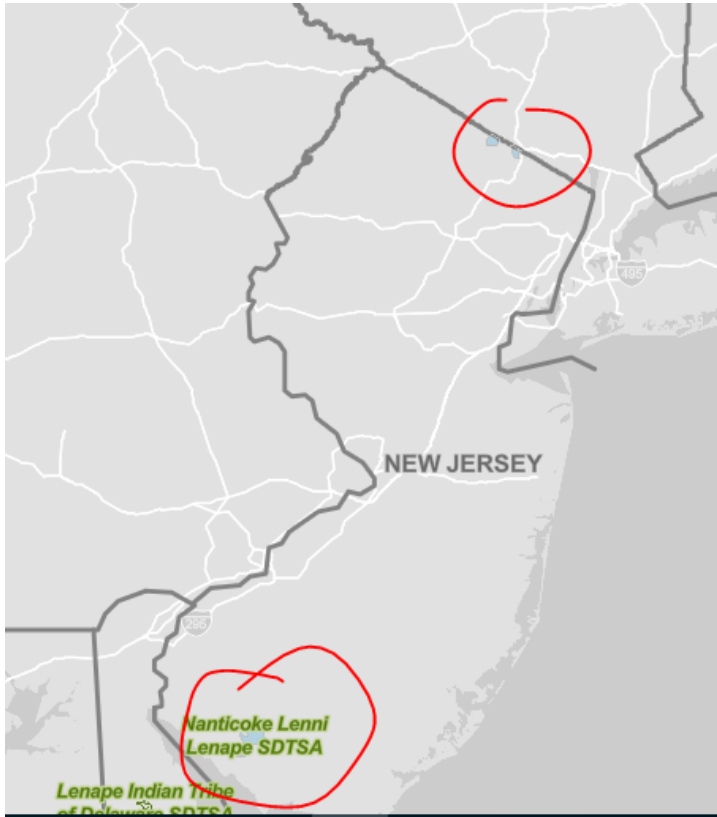
AIAN Distribution by Region



■ Atlanta   ■ Chicago   ■ Denver   ■ LA   ■ New York   ■ Philadelphia



# NJ Tribal Numbers



	New Jersey	
Label		Estimate
▼ Total Groups Tallied:		80,997
▼ American Indian tribes, specified:		51,266
Apache		661
Arapaho		27

Label	Total
▼ Port Gamble S'Klallam Tribe alone or in any combination	
Port Gamble S'Klallam Tribe alone or in any combination	1,067
▼ Potawatomi alone or in any combination	
Potawatomi alone or in any combination	33,722
▼ Potter Valley Tribe alone or in any combination	
Potter Valley Tribe alone or in any combination	23
▼ Powhatan alone or in any combination	
Powhatan alone or in any combination	6,063

# 2020 Census Detailed Demographic and Housing Characteristics File A (Detailed DHC-A)

---

- 1,500 detailed racial and ethnic groups
  - Tribal Groupings vs Tribal Affiliation
- Amount of data available depends on population size within a specific geography
  - As much detail as possible while ensuring strong confidentiality protections.
- Mapping capabilities with heat sensor



<https://data.census.gov/table/DECENNIALDDHCA2020.T01001?t=-5000M&y=2020&d=DEC+Detailed+Demographic+and+Housing+Characteristics+File+A&tp=true>

