

### New Jersey Initial Unemployment Claims by Industry - week ending 01/23/21

NAICS	CLAIMS	DESCRIPTION	Percentage of Weekly Claims
561	1,444	Administrative and support services	9.4%
722	931	Food service and drinking places	6.1%
238	869	Specialty trade contractors	5.7%
611	499	Educational services	3.3%
621	488	Ambulatory health care services (Dr. and Dentist offices)	3.2%
541	405	Professional, sci., and tech.services (lawyers, accts., engineers, archt, sci.research)	2.6%
237	376	Heavy and civil engineering construction	2.5%
624	289	Social assistance	1.9%
713	280	Amusement, gambling, recreation	1.8%
721	262	Accommodations	1.7%
452	261	General Merchandise Stores	1.7%
445	253	Food and beverage stores	1.6%
812	241	Personal and laundry services (Hair, nail salons, barbers, dry cleaners)	1.6%
236	230	Construction of buildings	1.5%
423	193	Merchant Wholesalers, Durable Goods	1.3%
424	193	Merchant Wholesalers, Nondurable Goods	1.3%
448	193	Clothing and clothing accessory stores	1.3%
493	192	Warehousing and storage	1.3%
623	179	Nursing and residential care facilities	1.2%
492	166	Couriers and messengers	1.1%

Prepared by: NJDOL, Office of Research and Information, Division of Economic & Demographic Research 01/25/21

### New Jersey Continued Unemployment Claims by Industry - 01/23/21

NAICS	CLAIMS	DESCRIPTION	Percentage of Total Claims	Percent of Industry Total Employment
561	33,530	Administrative and support services	6.0%	12.9%
722	32,903	Food service and drinking places	5.9%	12.8%
621	12,957	Ambulatory health care services (Dr. and Dentist offices)	2.3%	5.3%
541	11,547	Professional, sci., and tech.services (lawyers, accts., engineers, archt, sci.research)	2.1%	3.8%
238	11,295	Specialty trade contractors	2.0%	11.4%
611	10,669	Educational services	1.9%	2.7%
721	10,659	Accommodations	1.9%	22.0%
812	7,940	Personal and laundry services (Hair, nail salons, barbers, dry cleaners)	1.4%	12.5%
624	7,828	Social assistance	1.4%	7.0%
485	6,830	Transit and ground passenger transportation	1.2%	22.4%
713	5,842	Amusement, gambling, recreation	1.0%	12.7%
423	5,663	Merchant Wholesalers, Durable Goods	1.0%	5.2%
424	4,892	Merchant Wholesalers, Nondurable Goods	0.9%	5.4%
452	4,609	General Merchandise Stores	0.8%	6.7%
445	4,365	Food and beverage stores	0.8%	4.0%
623	4,225	Nursing and residential care facilities	0.8%	4.1%
448	4,040	Clothing and clothing accessory stores	0.7%	9.2%
493	4,032	Warehousing and storage	0.7%	6.4%
441	3,741	Motor vehicle and parts dealers	0.7%	7.6%
921	3,534	State Government	0.6%	3.0%

Prepared by: NJDOL, Office of Research and Information, Division of Economic & Demographic Research 01/25/21

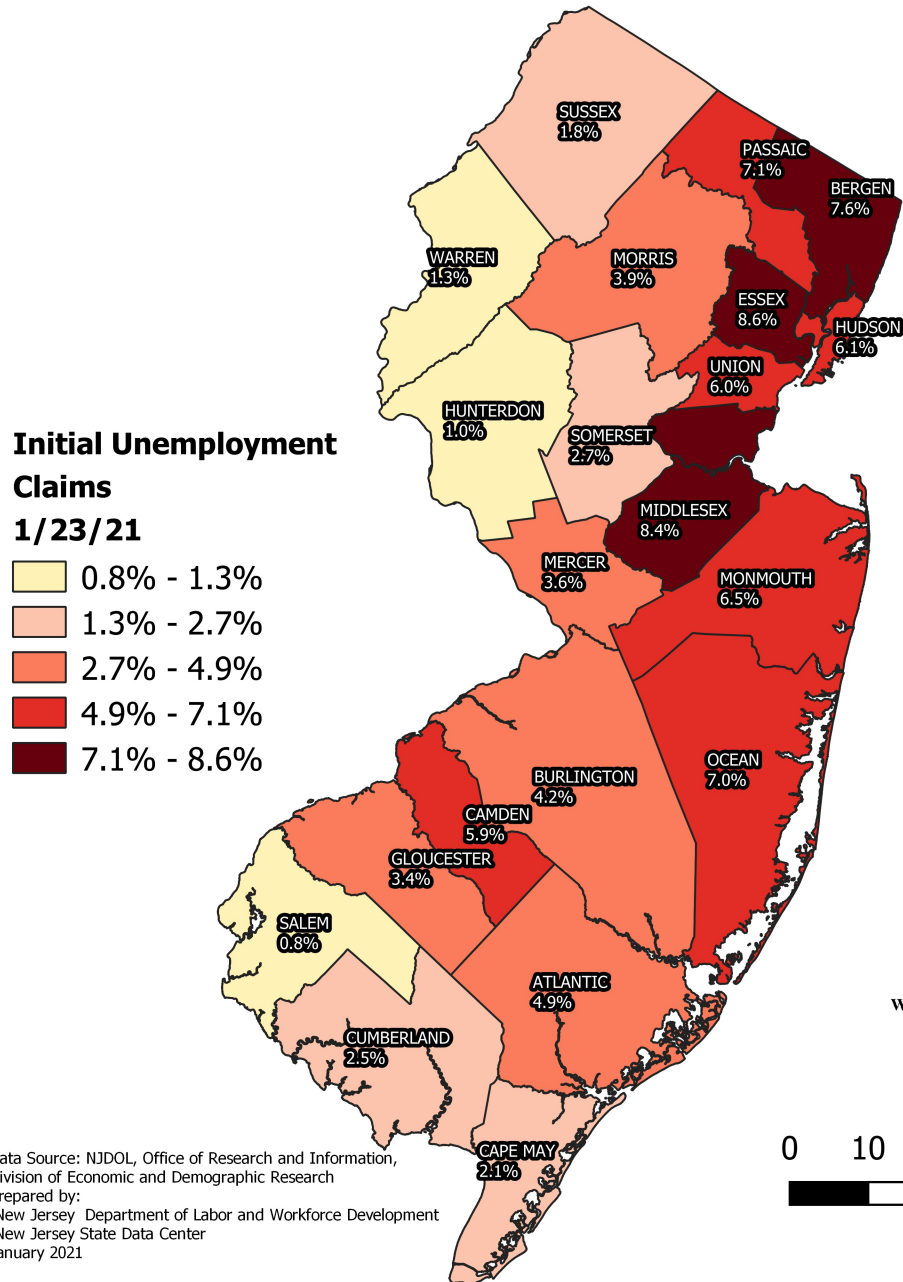
Claimants by Company Size Class 1Q2020				
Initials Week Ending 01/23/21			Continued 01/23/21	
SIZE CLASS	Initial Claims	% of Total	Continued Claims	% of Total
Unknown	4,432	28.90%	302,552	54.18%
5 or less	1,442	9.40%	35,165	6.30%
6 to 10	709	4.62%	17,730	3.17%
11 to 25	1,368	8.92%	30,336	5.43%
26 to 50	1,078	7.03%	25,754	4.61%
51 to 100	1,053	6.87%	24,067	4.31%
101 to 500	2,227	14.52%	52,497	9.40%
Over 500	3,027	19.74%	70,350	12.60%
Prepared by: NJDOL, Office of Research and Information, Division of Economic & Demographic Research 01/25/21				

N. J. Initial Unemployment Claims by County week ending 1/23/2021		
County of Residence	Claims	Percent of Total
Atlantic	759	4.9%
Bergen	1,171	7.6%
Burlington	638	4.2%
Camden	901	5.9%
Cape May	328	2.1%
Cumberland	378	2.5%
Essex	1,324	8.6%
Gloucester	529	3.4%
Hudson	932	6.1%
Hunterdon	156	1.0%
Mercer	550	3.6%
Middlesex	1,288	8.4%
Monmouth	996	6.5%
Morris	605	3.9%
Ocean	1,074	7.0%
Passaic	1,089	7.1%
Salem	126	0.8%
Somerset	416	2.7%
Sussex	279	1.8%
Union	914	6.0%
Warren	198	1.3%
New Jersey Total	14,651	95.5%
Out-of-State Filers	685	4.5%
<b>Grand Total</b>	<b>15,336</b>	<b>100.0%</b>
Prepared by: Office of Research and Information, Division of Economic & Demographic Research 1/25/2021		

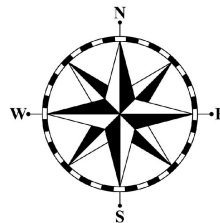
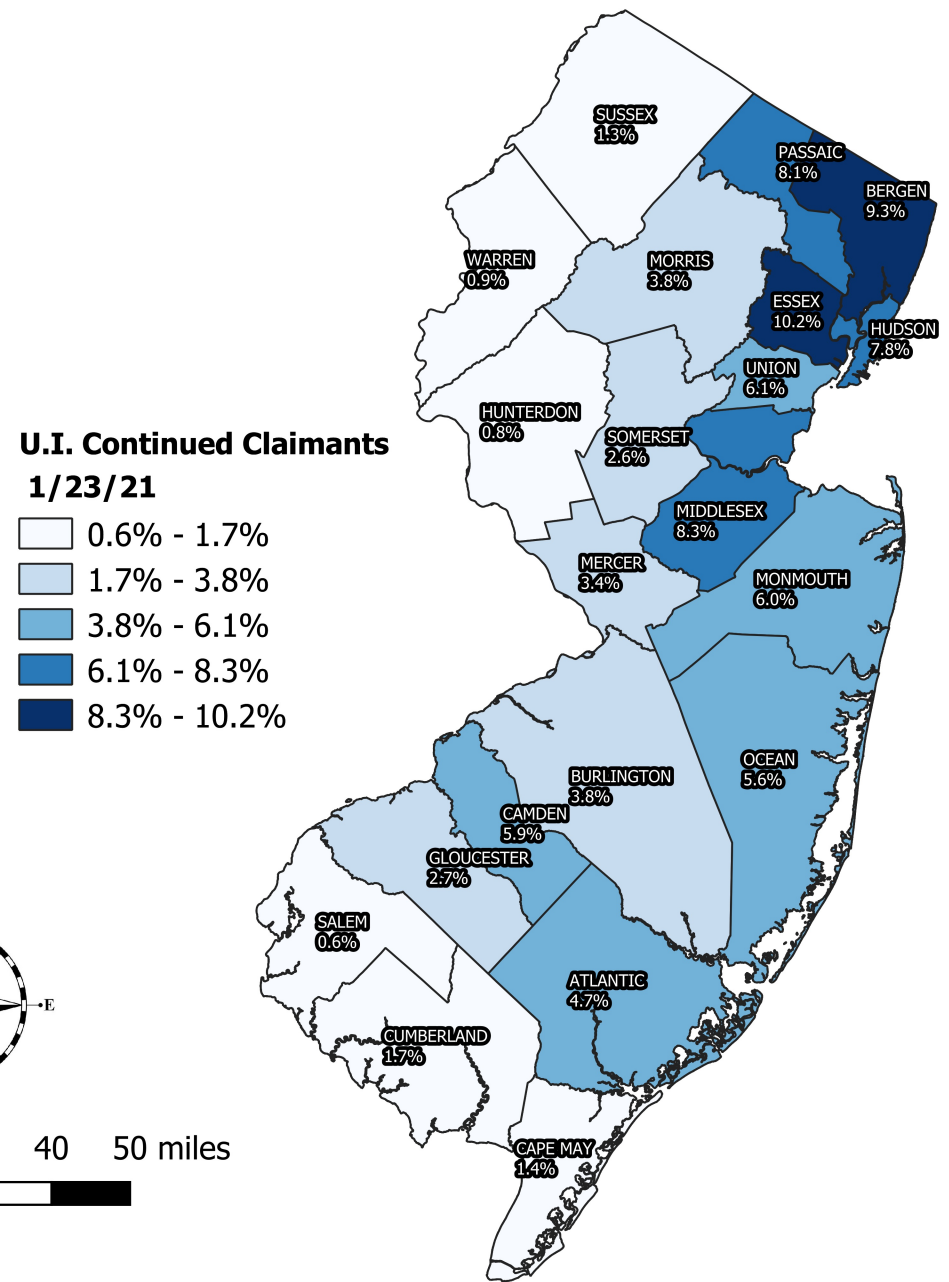
N. J. UI Continued Claimants by County week ending 1/23/21		
County of Residence	Claimants	Percent of Total
Atlantic	26,243	4.7%
Bergen	52,108	9.3%
Burlington	21,480	3.8%
Camden	32,712	5.9%
Cape May	7,564	1.4%
Cumberland	9,662	1.7%
Essex	57,015	10.2%
Gloucester	15,125	2.7%
Hudson	43,838	7.8%
Hunterdon	4,403	0.8%
Mercer	18,769	3.4%
Middlesex	46,501	8.3%
Monmouth	33,548	6.0%
Morris	21,314	3.8%
Ocean	31,033	5.6%
Passaic	45,107	8.1%
Salem	3,516	0.6%
Somerset	14,617	2.6%
Sussex	7,424	1.3%
Union	34,096	6.1%
Warren	4,964	0.9%
New Jersey Total	531,039	95.1%
Out-of-State Filers	27,412	4.9%
<b>Grand Total</b>	<b>558,451</b>	<b>100.0%</b>
Prepared by: Office of Research and Information, Division of Economic & Demographic Research 1/25/2021		

# N.J. Unemployment Claims

## N.J. Initial Unemployment Claims by County



## N.J. UI Continued Claimants by County

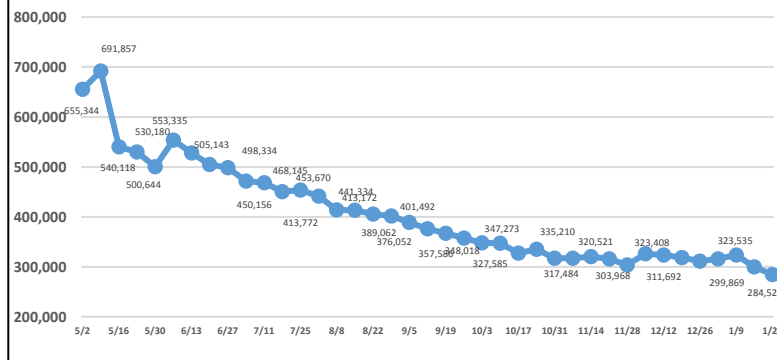


0 10 20 30 40 50 miles

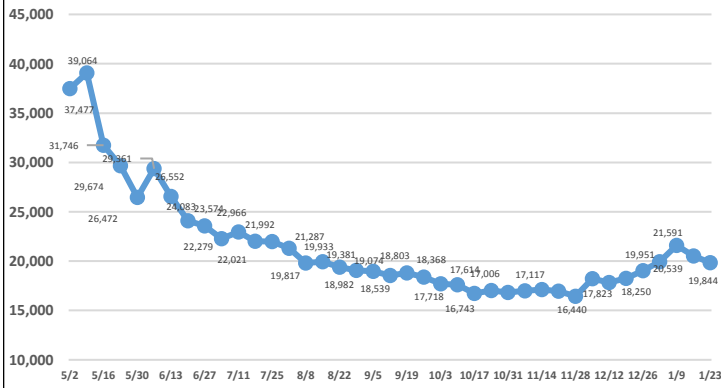
Characteristics of UI Initial Claimants Week ending January 23, 2021				
	Initial Claims	Percent		
<b>Total Claimants</b>	<b>15,336</b>	<b>100%</b>		
<b>Gender</b>	<b>15,336</b>	<b>100%</b>	<b>Age of Claimant</b>	<b>15,336</b>
Male	8,393	54.7%	Under 25	2,935
Female	6,943	45.3%	25-34	3,569
			35-44	2,808
<b>Race</b>	<b>15,336</b>	<b>100%</b>	45-54	2,687
White	8,961	58.4%	55-64	2,425
Black	2,722	17.7%	65 and over	912
Asian	794	5.2%		
Other	162	1.1%	<b>Occupation</b>	<b>15,336</b>
Chose Not To Answer	2,697	17.6%	Management	972
<b>Ethnicity</b>	<b>15,336</b>	<b>100%</b>	Business and financial	373
Hispanic	4,074	26.6%	Professional and related	1,926
Non-Hispanic	9,665	63.0%	Services	3,568
Chose Not To Answer	1,597	10.4%	Sales and related	1,543
<b>Educational Attainment</b>	<b>15,336</b>	<b>100%</b>	Office and admin support	1,851
Less Than High School	2,425	15.8%	Farming, fishing and forestry	54
High School Graduate	6,144	40.1%	Construction and extraction	1,606
Some College Incl'd Assoc Deg	3,643	23.8%	Installation, maint. and repair	518
Bachelors Degree and More	3,124	20.4%	Production	1,129
			Transp and material moving	1,780
			Military	16
Prepared by: Office of Research and Information, Division of Economic & Demographic Research, 1/25/2021				

Characteristics of UI Continued Claimants Week ending January 23, 2021				
	Claimants	Percent		
<b>Total Claimants</b>	<b>558,451</b>	<b>100%</b>		
<b>Gender</b>	<b>558,451</b>	<b>100%</b>	<b>Age of Claimant</b>	<b>558,451</b>
Male	269,351	48.2%	Under 25	78,308
Female	289,100	51.8%	25-34	120,797
			35-44	105,089
<b>Race</b>	<b>558,451</b>	<b>100%</b>	45-54	98,370
White	301,514	54.0%	55-64	98,881
Black	112,855	20.2%	65 and over	57,006
Asian	37,926	6.8%		
Other	6,143	1.1%	<b>Occupation</b>	<b>558,451</b>
Chose Not To Answer	100,013	17.9%	Management	36,846
		0	Business and financial	14,766
<b>Ethnicity</b>	<b>558,451</b>	<b>100%</b>	Professional and related	71,070
Hispanic	140,928	25.2%	Services	155,741
Non-Hispanic	362,435	64.9%	Sales and related	60,957
Chose Not To Answer	55,088	9.9%	Office and admin support	69,101
<b>Educational Attainment</b>	<b>558,451</b>	<b>100%</b>	Farming, fishing and forestry	1,502
Less Than High School	92,250	16.5%	Construction and extraction	29,110
High School Graduate	213,946	38.3%	Installation, maint. and repair	14,827
Some College Incl'd Assoc Deg	133,424	23.9%	Production	34,012
Bachelors Degree and More	118,831	21.3%	Transp and material moving	70,018
			Military	501
Prepared by: Office of Research and Information, Division of Economic & Demographic Research, 1/25/2021				

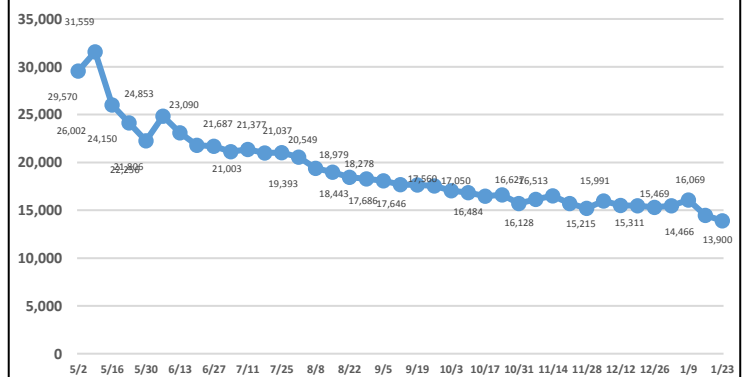
## Total Continued Claims



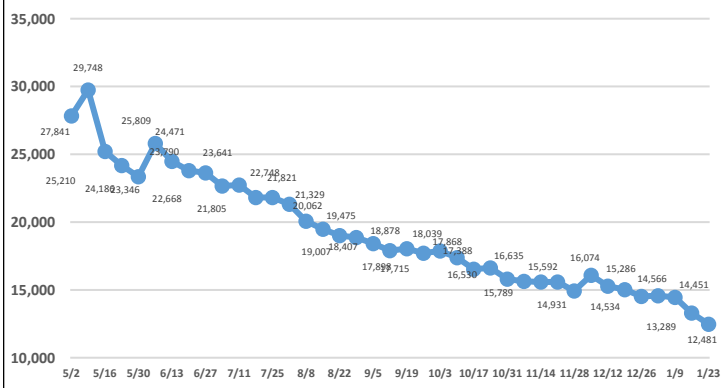
## Construction Continued Claims



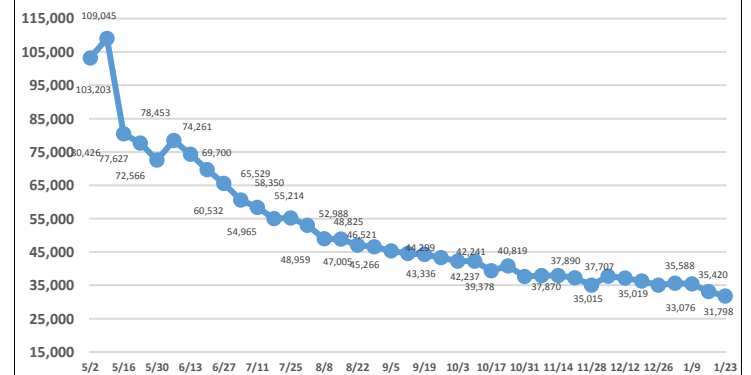
## Manufacturing Continued Claims



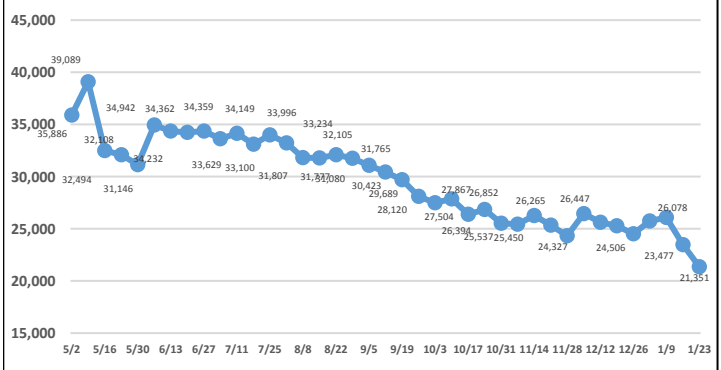
## Wholesale Trade Continued Claims



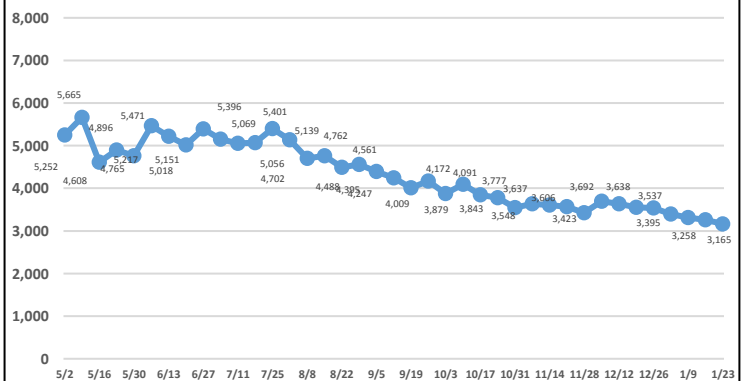
## Retail Trade Continued Claims



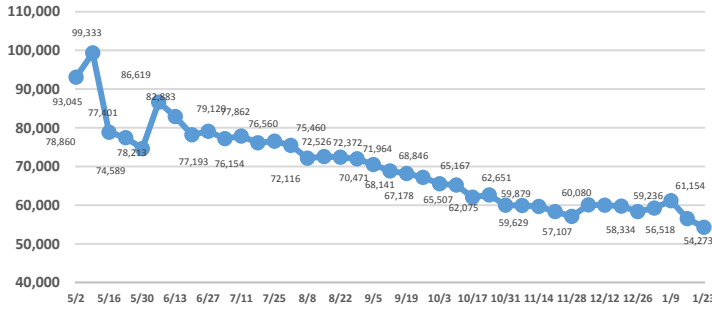
## Transportation/Warehousing Continued Claims



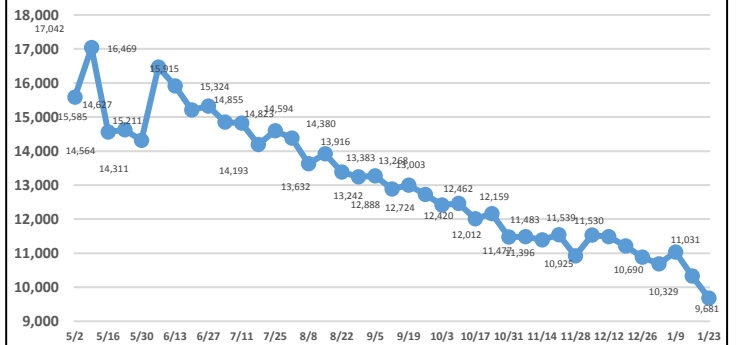
## Information Continued Claims



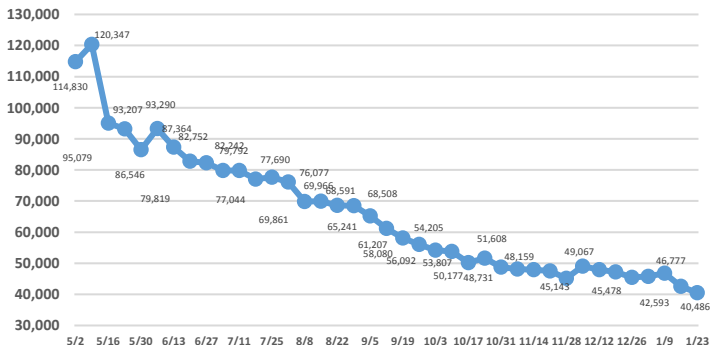
## Professional & Business Services Continued Claims



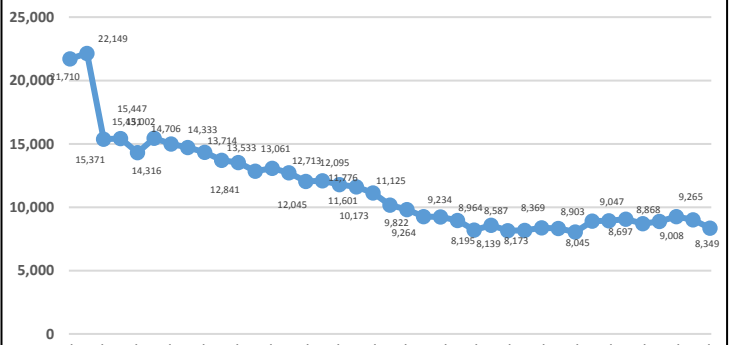
## Financial Activities Continued Claims



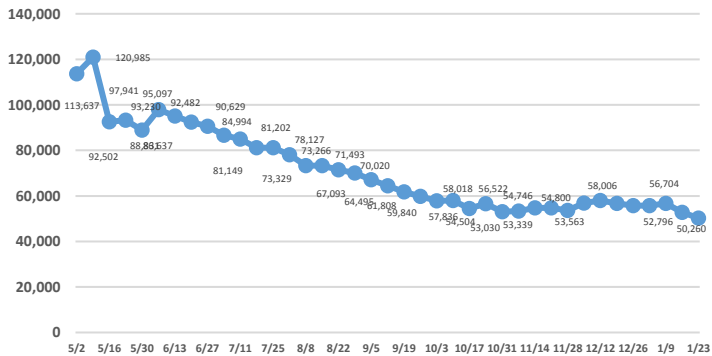
## Education & Health Services Continued Claims



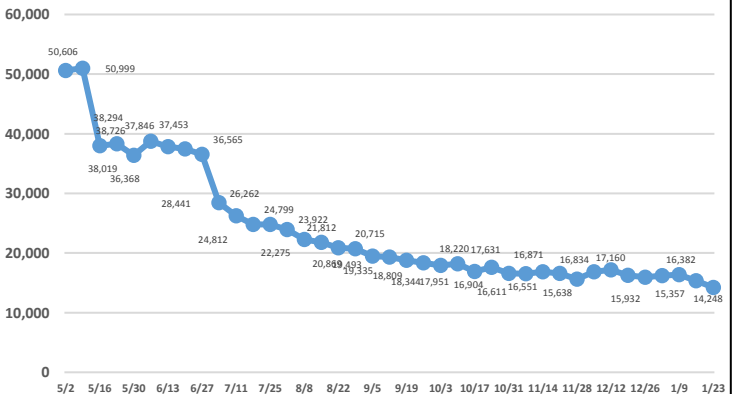
## Arts, Entertainment, Recreation Continued Claims



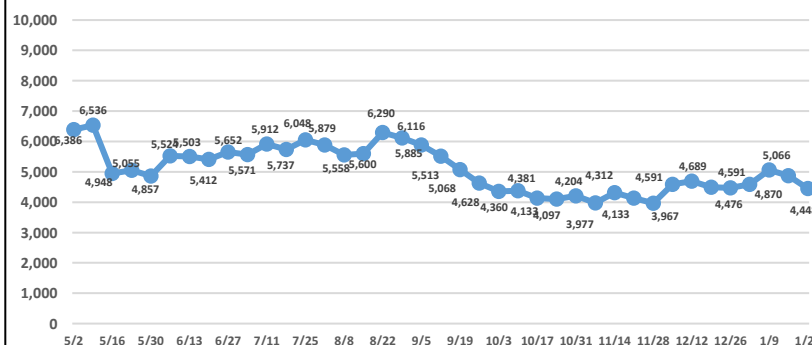
## Accommodations & Food Services Continued Claims



## Other Services Continued Claims



## Public Administration Continued Claims



Note: Industry data breakouts above do not include PUA claimants (self employed/independent contract workers).