

### New Jersey Initial Unemployment Claims by Industry - week ending 01/30/21

NAICS	CLAIMS	DESCRIPTION	Percentage of Weekly Claims
561	1,376	Administrative and support services	8.5%
238	1,013	Specialty trade contractors	6.2%
722	799	Food service and drinking places	4.9%
621	509	Ambulatory health care services (Dr. and Dentist offices)	3.1%
611	473	Educational services	2.9%
541	389	Professional, sci., and tech.services (lawyers, accts., engineers, archt, sci.research)	2.4%
237	335	Heavy and civil engineering construction	2.1%
445	285	Food and beverage stores	1.8%
624	266	Social assistance	1.6%
452	264	General Merchandise Stores	1.6%
713	250	Amusement, gambling, recreation	1.5%
721	248	Accommodations	1.5%
812	243	Personal and laundry services (Hair, nail salons, barbers, dry cleaners)	1.5%
236	238	Construction of buildings	1.5%
493	233	Warehousing and storage	1.4%
448	195	Clothing and clothing accessory stores	1.2%
623	183	Nursing and residential care facilities	1.1%
492	172	Couriers and messengers	1.1%
424	167	Merchant Wholesalers, Nondurable Goods	1.0%
423	163	Merchant Wholesalers, Durable Goods	1.0%

Prepared by: NJDOL, Office of Research and Information, Division of Economic & Demographic Research 02/01/21

### New Jersey Continued Unemployment Claims by Industry - 01/30/21

NAICS	CLAIMS	DESCRIPTION	Percentage of Total Claims	Percent of Industry Total Employment
561	32,376	Administrative and support services	5.9%	12.4%
722	31,647	Food service and drinking places	5.7%	12.4%
621	12,432	Ambulatory health care services (Dr. and Dentist offices)	2.3%	5.1%
238	11,229	Specialty trade contractors	2.0%	11.3%
541	10,989	Professional, sci., and tech.services (lawyers, accts., engineers, archt, sci.research)	2.0%	3.6%
611	10,242	Educational services	1.9%	2.6%
721	10,193	Accommodations	1.8%	21.1%
812	7,766	Personal and laundry services (Hair, nail salons, barbers, dry cleaners)	1.4%	12.3%
624	7,597	Social assistance	1.4%	6.8%
485	6,389	Transit and ground passenger transportation	1.2%	20.9%
713	5,726	Amusement, gambling, recreation	1.0%	12.4%
423	5,387	Merchant Wholesalers, Durable Goods	1.0%	5.0%
424	4,604	Merchant Wholesalers, Nondurable Goods	0.8%	5.1%
452	4,454	General Merchandise Stores	0.8%	6.4%
445	4,218	Food and beverage stores	0.8%	3.8%
623	4,012	Nursing and residential care facilities	0.7%	3.9%
493	3,935	Warehousing and storage	0.7%	6.3%
448	3,929	Clothing and clothing accessory stores	0.7%	8.9%
441	3,595	Motor vehicle and parts dealers	0.7%	7.3%
237	3,454	Heavy and civil engineering construction	0.6%	16.6%

Prepared by: NJDOL, Office of Research and Information, Division of Economic & Demographic Research 02/01/21

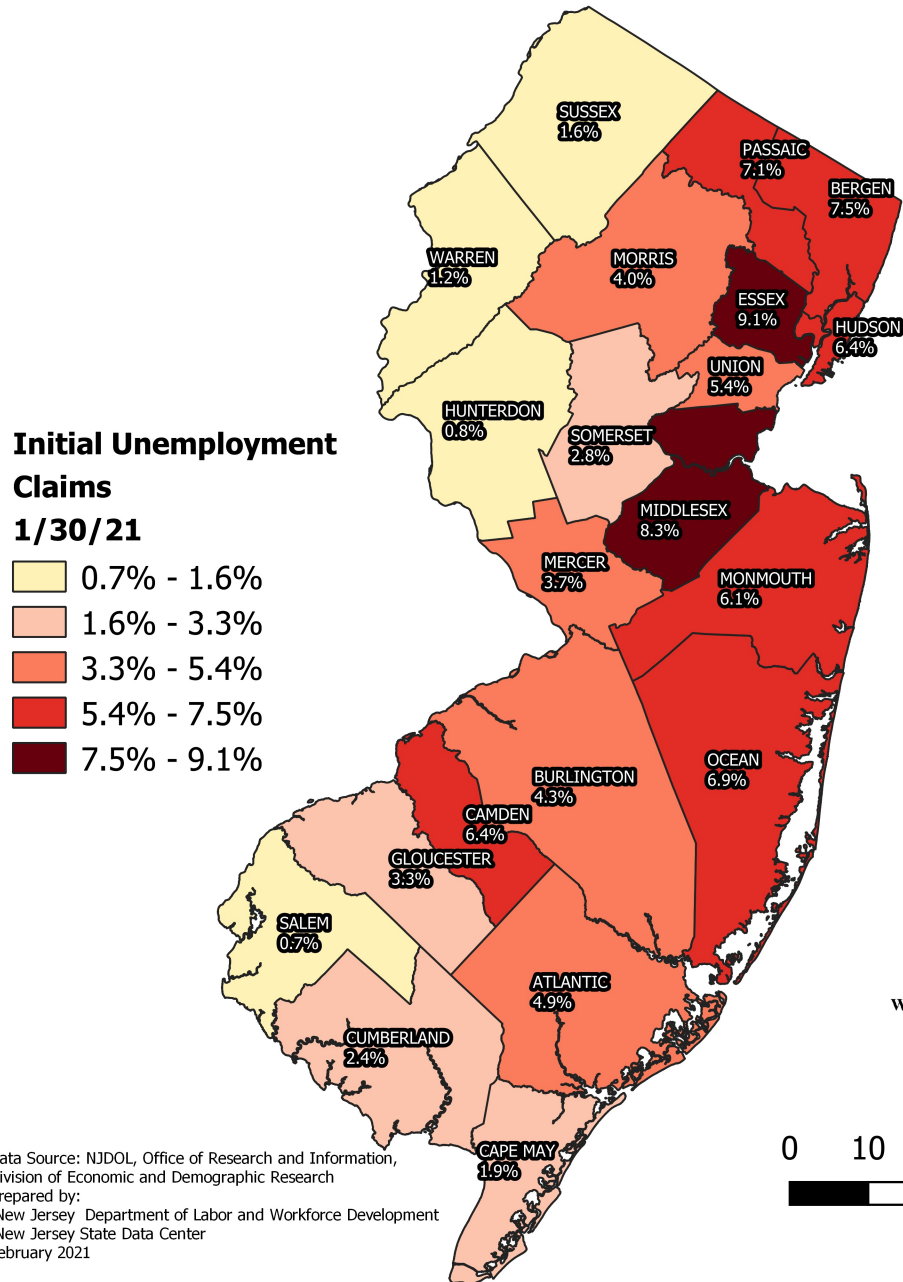
Claimants by Company Size Class 1Q2020				
Initials Week Ending 01/30/21			Continued 01/30/21	
SIZE CLASS	Initial Claims	% of Total	Continued Claims	% of Total
Unknown	5,768	35.45%	304,695	55.26%
5 or less	1,424	8.75%	33,997	6.17%
6 to 10	689	4.23%	17,274	3.13%
11 to 25	1,210	7.44%	29,474	5.35%
26 to 50	1,062	6.53%	24,904	4.52%
51 to 100	1,070	6.58%	23,231	4.21%
101 to 500	2,141	13.16%	50,423	9.14%
Over 500	2,907	17.87%	67,433	12.23%
Prepared by: NJDOL, Office of Research and Information, Division of Economic & Demographic Research 02/01/21				

N. J. Initial Unemployment Claims by County week ending 1/30/2021		
County of Residence	Claims	Percent of Total
Atlantic	803	4.9%
Bergen	1,215	7.5%
Burlington	704	4.3%
Camden	1,037	6.4%
Cape May	317	1.9%
Cumberland	397	2.4%
Essex	1,482	9.1%
Gloucester	544	3.3%
Hudson	1,040	6.4%
Hunterdon	124	0.8%
Mercer	601	3.7%
Middlesex	1,352	8.3%
Monmouth	987	6.1%
Morris	654	4.0%
Ocean	1,121	6.9%
Passaic	1,163	7.1%
Salem	113	0.7%
Somerset	452	2.8%
Sussex	259	1.6%
Union	876	5.4%
Warren	202	1.2%
New Jersey Total	15,443	94.9%
Out-of-State Filers	828	5.1%
<b>Grand Total</b>	<b><u>16,271</u></b>	<b><u>100.0%</u></b>
Prepared by: Office of Research and Information, Division of Economic & Demographic Research 2/1/2021		

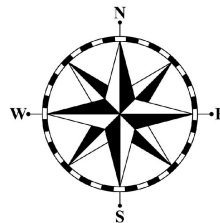
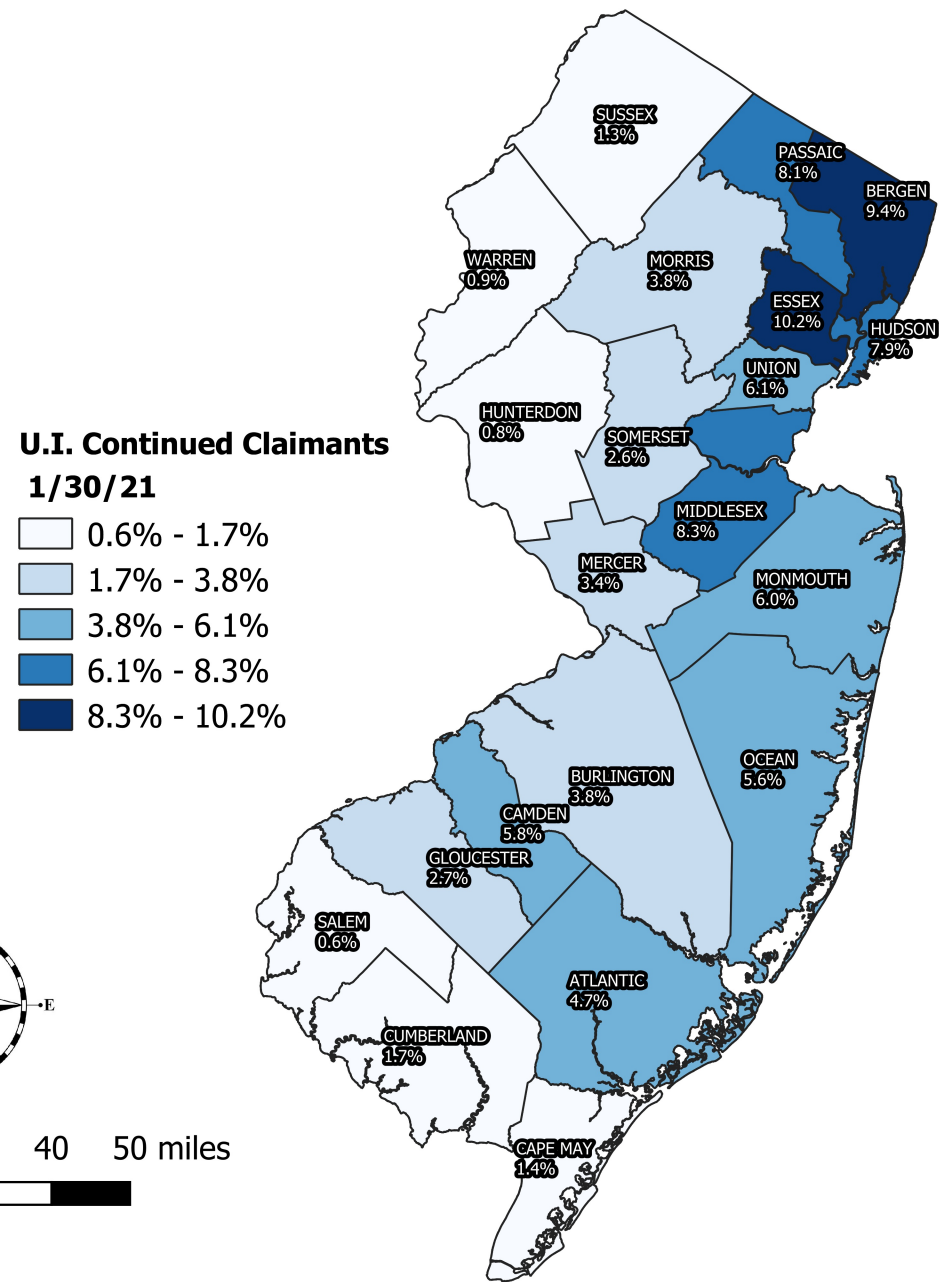
N. J. UI Continued Claimants by County week ending 1/30/21		
County of Residence	Claimants	Percent of Total
Atlantic	25,704	4.7%
Bergen	51,607	9.4%
Burlington	21,103	3.8%
Camden	32,251	5.8%
Cape May	7,580	1.4%
Cumberland	9,630	1.7%
Essex	56,171	10.2%
Gloucester	14,916	2.7%
Hudson	43,333	7.9%
Hunterdon	4,410	0.8%
Mercer	18,526	3.4%
Middlesex	45,913	8.3%
Monmouth	33,250	6.0%
Morris	21,034	3.8%
Ocean	30,838	5.6%
Passaic	44,502	8.1%
Salem	3,467	0.6%
Somerset	14,385	2.6%
Sussex	7,393	1.3%
Union	33,699	6.1%
Warren	4,965	0.9%
New Jersey Total	524,677	95.1%
Out-of-State Filers	26,754	4.9%
<b>Grand Total</b>	<b><u>551,431</u></b>	<b><u>100.0%</u></b>
Prepared by: Office of Research and Information, Division of Economic & Demographic Research 2/1/2021		

# N.J. Unemployment Claims

## N.J. Initial Unemployment Claims by County



## N.J. UI Continued Claimants by County



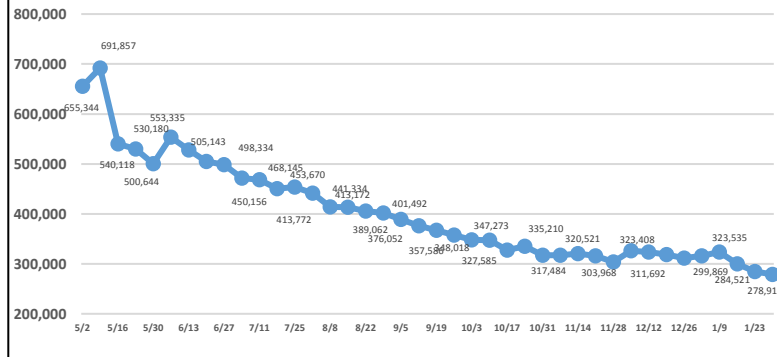
0 10 20 30 40 50 miles



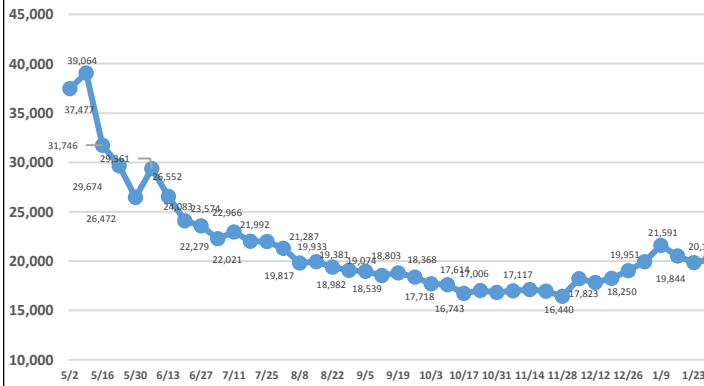
Characteristics of UI Initial Claimants Week ending January 30, 2021					
	Initial Claims	Percent		Initial Claims	Percent
<b>Total Claimants</b>	<b>16,271</b>	<b>100%</b>			
<b>Gender</b>	<b>16,271</b>	<b>100%</b>	<b>Age of Claimant</b>	<b>16,271</b>	<b>100%</b>
Male	8,901	54.7%	Under 25	2,990	18.4%
Female	7,370	45.3%	25-34	3,743	23.0%
			35-44	3,005	18.5%
<b>Race</b>	<b>16,271</b>	<b>100%</b>	45-54	2,838	17.4%
White	9,388	57.7%	55-64	2,691	16.5%
Black	3,032	18.6%	65 and over	1,004	6.2%
Asian	887	5.5%			
Other	184	1.1%	<b>Occupation</b>	<b>16,271</b>	<b>100%</b>
Chose Not To Answer	2,780	17.1%	Management	1,055	6.5%
<b>Ethnicity</b>	<b>16,271</b>	<b>100%</b>	Business and financial	398	2.4%
Hispanic	4,297	26.4%	Professional and related	2,047	12.6%
Non-Hispanic	10,244	63.0%	Services	3,784	23.3%
Chose Not To Answer	1,730	10.6%	Sales and related	1,610	9.9%
<b>Educational Attainment</b>	<b>16,271</b>	<b>100%</b>	Office and admin support	1,931	11.9%
Less Than High School	2,647	16.3%	Farming, fishing and forestry	70	0.4%
High School Graduate	6,582	40.5%	Construction and extraction	1,834	11.3%
Some College Incl Assoc Deg	3,778	23.2%	Installation, maint. and repair	478	2.9%
Bachelors Degree and More	3,264	20.1%	Production	1,179	7.2%
			Transp and material moving	1,860	11.4%
			Military	25	0.2%
Prepared by: Office of Research and Information, Division of Economic & Demographic Research, 2/1/2021					

Characteristics of UI Continued Claimants Week ending January 30, 2021					
	Claimants	Percent		Claimants	Percent
<b>Total Claimants</b>	<b>551,431</b>	<b>100%</b>			
<b>Gender</b>	<b>551,431</b>	<b>100%</b>	<b>Age of Claimant</b>	<b>551,431</b>	<b>100%</b>
Male	266,926	48.4%	Under 25	78,357	14.2%
Female	284,505	51.6%	25-34	119,331	21.6%
			35-44	103,837	18.8%
<b>Race</b>	<b>551,431</b>	<b>100%</b>	45-54	97,220	17.6%
White	297,459	53.9%	55-64	97,142	17.6%
Black	111,246	20.2%	65 and over	55,544	10.1%
Asian	37,495	6.8%			
Other	6,094	1.1%	<b>Occupation</b>	<b>551,431</b>	<b>100%</b>
Chose Not To Answer	99,137	18.0%	Management	36,162	6.6%
		0	Business and financial	14,636	2.7%
<b>Ethnicity</b>	<b>551,431</b>	<b>100%</b>	Professional and related	69,945	12.7%
Hispanic	139,474	25.3%	Services	153,896	27.9%
Non-Hispanic	357,437	64.8%	Sales and related	60,370	10.9%
Chose Not To Answer	54,520	9.9%	Office and admin support	67,790	12.3%
<b>Educational Attainment</b>	<b>551,431</b>	<b>100%</b>	Farming, fishing and forestry	1,527	0.3%
Less Than High School	91,204	16.5%	Construction and extraction	29,142	5.3%
High School Graduate	211,419	38.3%	Installation, maint. and repair	14,587	2.6%
Some College Incl Assoc Deg	131,897	23.9%	Production	33,583	6.1%
Bachelors Degree and More	116,911	21.2%	Transp and material moving	69,303	12.6%
			Military	490	0.1%
Prepared by: Office of Research and Information, Division of Economic & Demographic Research, 2/1/2021					

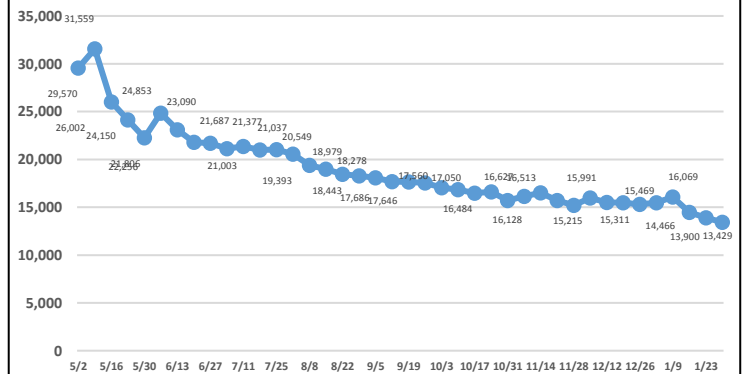
## Total Continued Claims



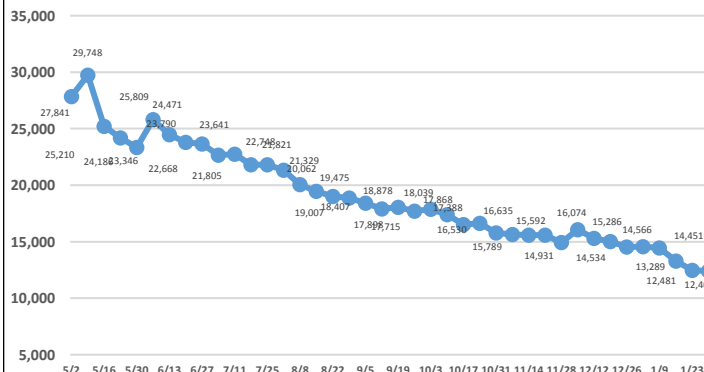
## Construction Continued Claims



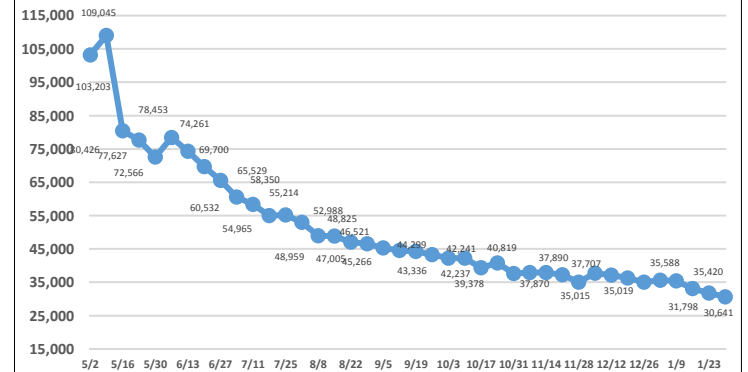
## Manufacturing Continued Claims



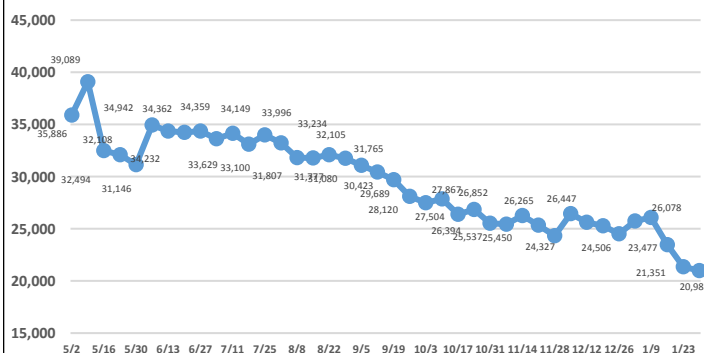
## Wholesale Trade Continued Claims



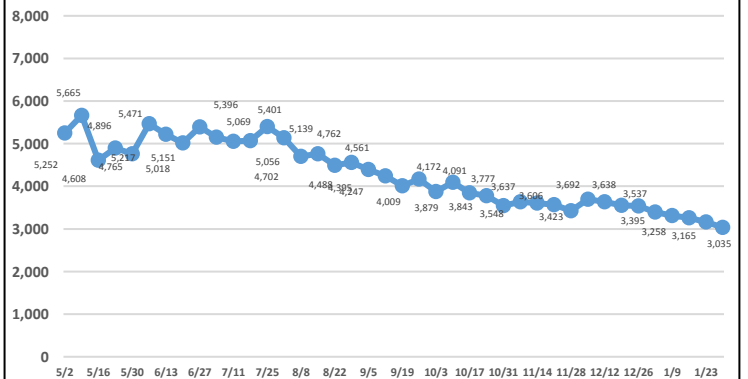
## Retail Trade Continued Claims



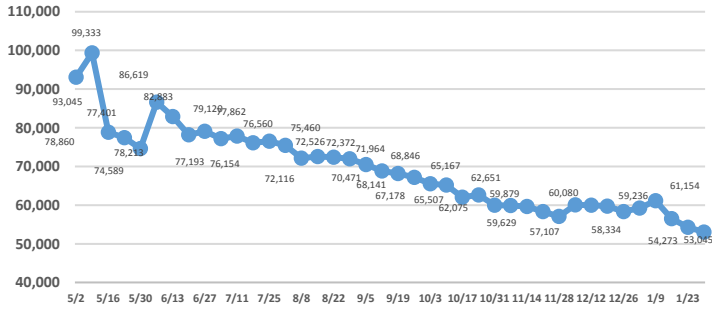
## Transportation/Warehousing Continued Claims



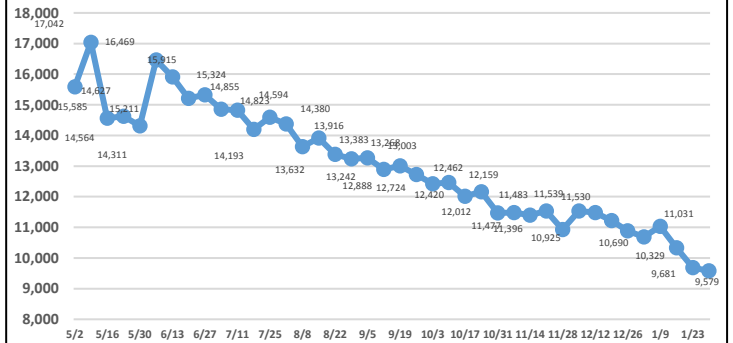
## Information Continued Claims



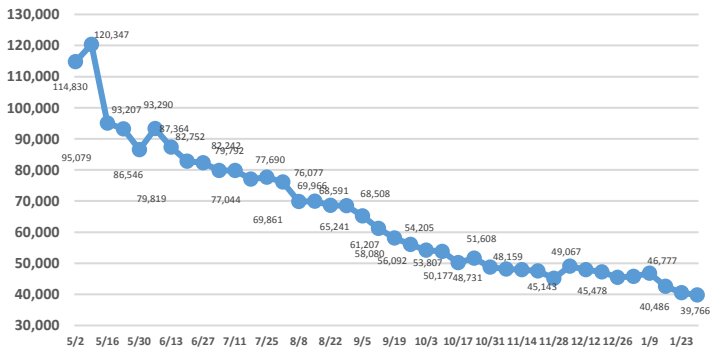
## Professional & Business Services Continued Claims



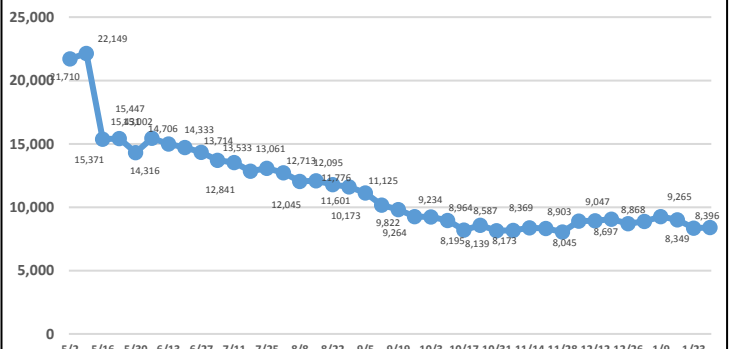
## Financial Activities Continued Claims



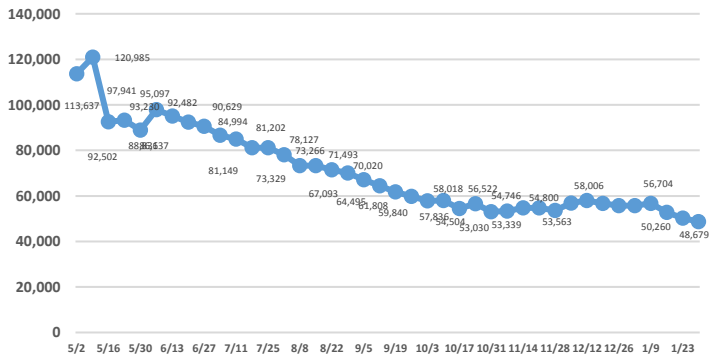
## Education & Health Services Continued Claims



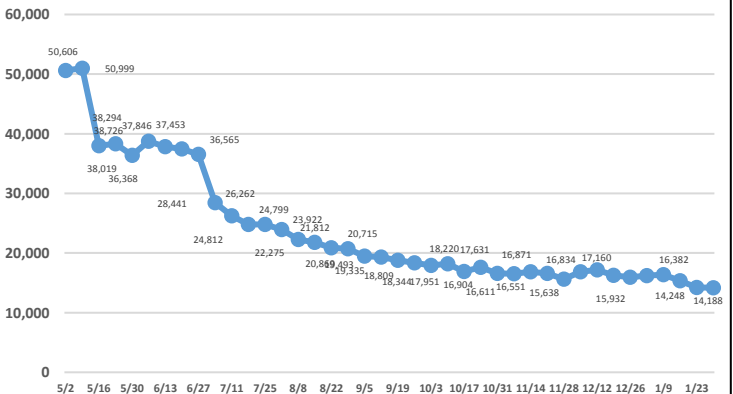
## Arts, Entertainment, Recreation Continued Claims



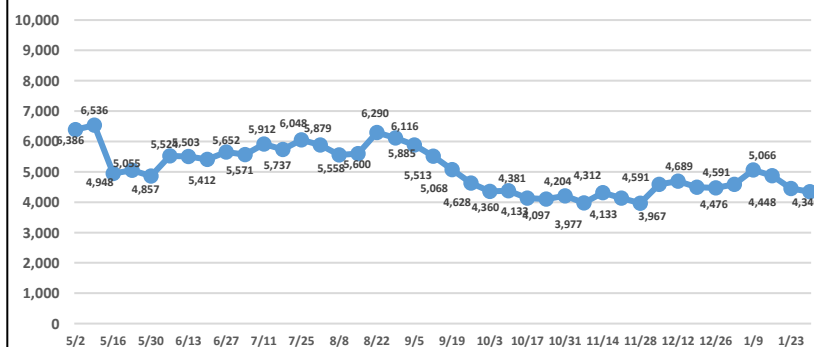
## Accommodations & Food Services Continued Claims



## Other Services Continued Claims



## Public Administration Continued Claims



Note: Industry data breaks above do not include PUA claimants (self employed/independent contract workers).