

New Jersey Initial Unemployment Claims by Industry - week ending 02/13/21

NAICS	CLAIMS	DESCRIPTION	Percentage of Weekly Claims
238	1,441	Specialty trade contractors	8.4%
561	1,297	Administrative and support services	7.6%
722	748	Food service and drinking places	4.4%
237	725	Heavy and civil engineering construction	4.2%
621	488	Ambulatory health care services (Dr. and Dentist offices)	2.9%
611	443	Educational services	2.6%
541	436	Professional, sci., and tech.services (lawyers, accts., engineers, archt, sci.research)	2.6%
236	294	Construction of buildings	1.7%
493	250	Warehousing and storage	1.5%
452	232	General Merchandise Stores	1.4%
624	219	Social assistance	1.3%
445	218	Food and beverage stores	1.3%
812	205	Personal and laundry services (Hair, nail salons, barbers, dry cleaners)	1.2%
423	204	Merchant Wholesalers, Durable Goods	1.2%
424	193	Merchant Wholesalers, Nondurable Goods	1.1%
713	186	Amusement, gambling, recreation	1.1%
448	178	Clothing and clothing accessory stores	1.0%
721	177	Accommodations	1.0%
485	162	Transit and ground passenger transportation	0.9%
484	156	Truck transportation	0.9%

Prepared by: NJDOL, Office of Research and Information, Division of Economic & Demographic Research 02/15/21

New Jersey Continued Unemployment Claims by Industry - 02/13/21

NAICS	CLAIMS	DESCRIPTION	Percentage of Total Claims	Percent of Industry Total Employment
561	37,444	Administrative and support services	6.1%	14.4%
722	36,944	Food service and drinking places	6.1%	14.4%
621	15,268	Ambulatory health care services (Dr. and Dentist offices)	2.5%	6.3%
238	13,948	Specialty trade contractors	2.3%	14.0%
541	13,609	Professional, sci., and tech.services (lawyers, accts., engineers, archt, sci.research)	2.2%	4.4%
721	12,298	Accommodations	2.0%	25.4%
611	11,667	Educational services	1.9%	3.0%
812	9,401	Personal and laundry services (Hair, nail salons, barbers, dry cleaners)	1.5%	14.8%
624	8,787	Social assistance	1.4%	7.8%
485	7,319	Transit and ground passenger transportation	1.2%	23.9%
423	6,800	Merchant Wholesalers, Durable Goods	1.1%	6.2%
713	6,620	Amusement, gambling, recreation	1.1%	14.3%
424	5,739	Merchant Wholesalers, Nondurable Goods	0.9%	6.3%
452	5,454	General Merchandise Stores	0.9%	7.9%
448	4,955	Clothing and clothing accessory stores	0.8%	11.3%
445	4,934	Food and beverage stores	0.8%	4.5%
441	4,549	Motor vehicle and parts dealers	0.7%	9.3%
493	4,512	Warehousing and storage	0.7%	7.2%
237	4,486	Heavy and civil engineering construction	0.7%	21.5%
623	4,462	Nursing and residential care facilities	0.7%	4.3%

Prepared by: NJDOL, Office of Research and Information, Division of Economic & Demographic Research 02/15/21

Claimants by Company Size Class 1Q2020

Claimants by Company Size Class 1Q2020				
Initials Week Ending 02/13/21			Continued 02/13/21	
SIZE CLASS	Initial Claims	% of Total	Continued Claims	% of Total
Unknown	5,998	35.13%	315,591	51.75%
5 or less	1,313	7.69%	42,547	6.98%
6 to 10	711	4.16%	20,891	3.43%
11 to 25	1,298	7.60%	35,241	5.78%
26 to 50	1,197	7.01%	29,825	4.89%
51 to 100	1,191	6.98%	27,837	4.56%
101 to 500	2,545	14.91%	59,809	9.81%
Over 500	2,821	16.52%	78,122	12.81%

Prepared by: NJDOL, Office of Research and Information, Division of Economic & Demographic Research
02/15/21

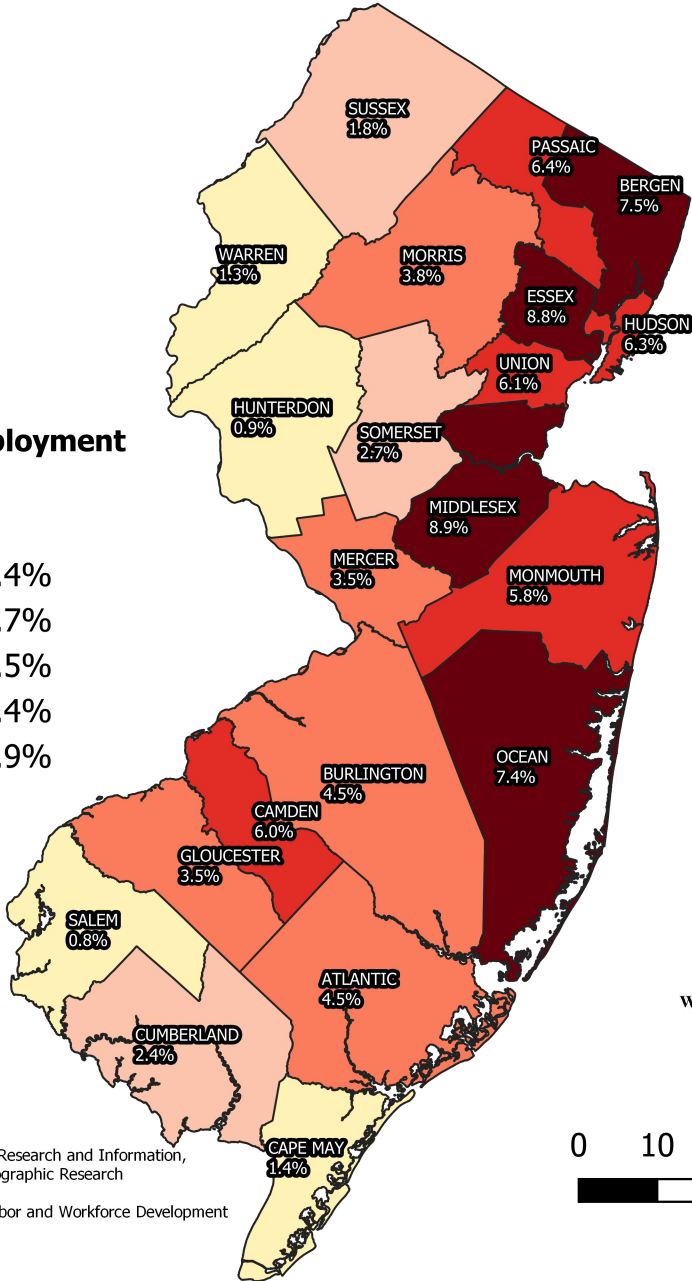
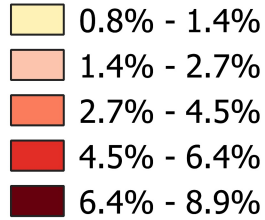
N. J. Initial Unemployment Claims by County week ending 2/13/2021		
County of Residence	Claims	Percent of Total
Atlantic	768	4.5%
Bergen	1,285	7.5%
Burlington	773	4.5%
Camden	1,028	6.0%
Cape May	245	1.4%
Cumberland	404	2.4%
Essex	1,510	8.8%
Gloucester	597	3.5%
Hudson	1,076	6.3%
Hunterdon	148	0.9%
Mercer	600	3.5%
Middlesex	1,526	8.9%
Monmouth	995	5.8%
Morris	647	3.8%
Ocean	1,262	7.4%
Passaic	1,093	6.4%
Salem	140	0.8%
Somerset	463	2.7%
Sussex	302	1.8%
Union	1,039	6.1%
Warren	217	1.3%
New Jersey Total	16,118	94.4%
Out-of-State Filers	956	5.6%
Grand Total	<u>17,074</u>	<u>100.0%</u>
Prepared by: Office of Research and Information, Division of Economic & Demographic Research 2/15/2021		

N. J. UI Continued Claimants by County week ending 2/13/21		
County of Residence	Claimants	Percent of Total
Atlantic	28,524	4.7%
Bergen	57,307	9.4%
Burlington	23,413	3.8%
Camden	35,185	5.8%
Cape May	8,270	1.4%
Cumberland	10,331	1.7%
Essex	61,146	10.0%
Gloucester	16,664	2.7%
Hudson	46,839	7.7%
Hunterdon	5,002	0.8%
Mercer	20,149	3.3%
Middlesex	51,688	8.5%
Monmouth	37,150	6.1%
Morris	23,703	3.9%
Ocean	34,611	5.7%
Passaic	48,261	7.9%
Salem	3,735	0.6%
Somerset	16,550	2.7%
Sussex	8,368	1.4%
Union	36,979	6.1%
Warren	5,518	0.9%
New Jersey Total	579,393	95.0%
Out-of-State Filers	30,470	5.0%
Grand Total	<u>609,863</u>	<u>100.0%</u>
Prepared by: Office of Research and Information, Division of Economic & Demographic Research 2/15/2021		

N.J. Unemployment Claims

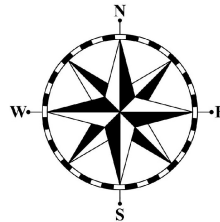
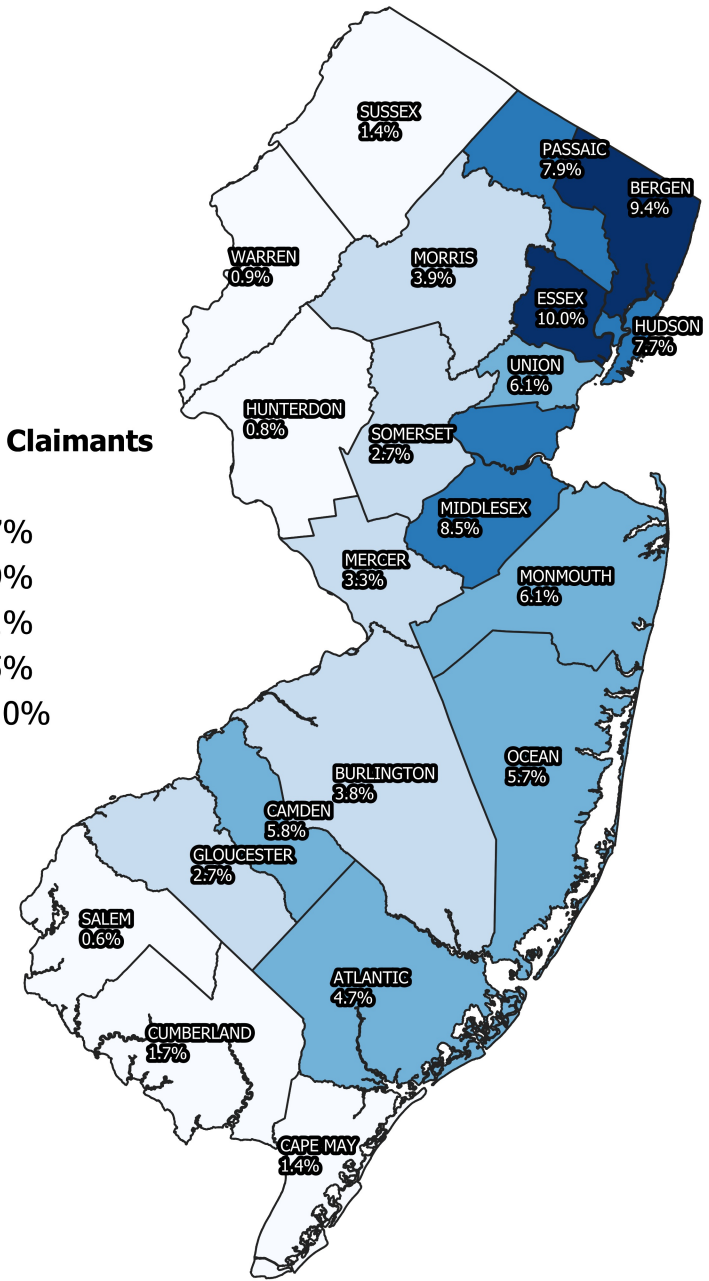
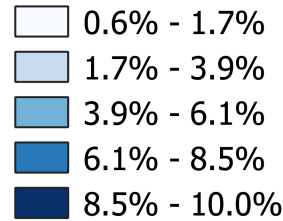
N.J. Initial Unemployment Claims by County

Initial Unemployment Claims 2/13/21



N.J. UI Continued Claimants by County

U.I. Continued Claimants 2/13/21



0 10 20 30 40 50 miles



**Characteristics of UI Initial Claimants
Week ending February 13, 2021**

	Initial Claims	Percent		Initial Claims	Percent
Total Claimants	17,074	100%			
Gender	17,074	100%	Age of Claimant	17,074	100%
Male	9,995	58.5%	Under 25	3,020	17.7%
Female	7,079	41.5%	25-34	4,056	23.8%
Race	17,074	100%	35-44	3,259	19.1%
White	9,997	58.6%	45-54	3,101	18.2%
Black	3,159	18.5%	55-64	2,696	15.8%
Asian	822	4.8%	65 and over	942	5.5%
Other	192	1.1%	Occupation	17,074	100%
Chose Not To Answer	2,904	17.0%	Management	1,101	6.4%
Ethnicity	17,074	100%	Business and financial	413	2.4%
Hispanic	4,349	25.5%	Professional and related	1,971	11.5%
Non-Hispanic	11,124	65.2%	Services	3,440	20.1%
Chose Not To Answer	1,601	9.4%	Sales and related	1,549	9.1%
Educational Attainment	17,074	100%	Office and admin support	1,858	10.9%
Less Than High School	2,756	16.1%	Farming, fishing and forestry	67	0.4%
High School Graduate	6,915	40.5%	Construction and extraction	2,829	16.6%
Some College Includ Assoc Deg	3,997	23.4%	Installation, maint. and repair	562	3.3%
Bachelors Degree and More	3,406	19.9%	Production	1,167	6.8%
			Transp and material moving	2,101	12.3%
			Military	16	0.1%

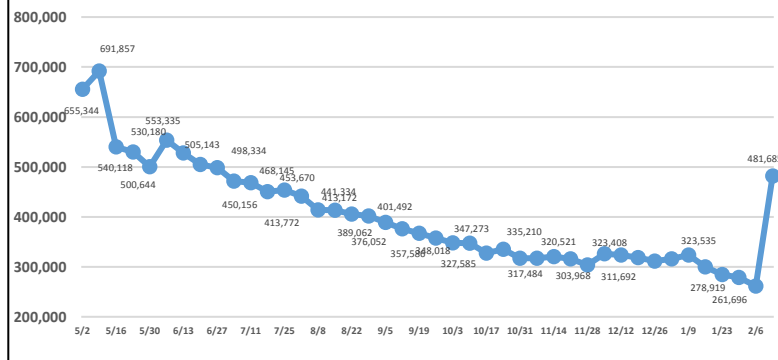
Prepared by: Office of Research and Information, Division of Economic & Demographic Research, 2/15/2021

**Characteristics of UI Continued Claimants
Week ending February 13, 2021**

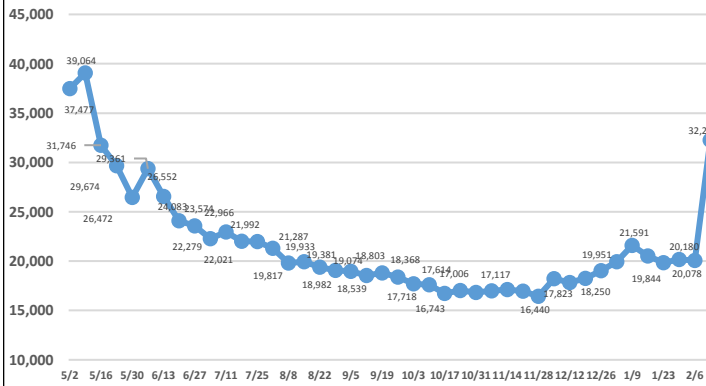
	Claimants	Percent		Claimants	Percent
Total Claimants	609,863	100%			
Gender	609,863	100%	Age of Claimant	609,863	100%
Male	295,864	48.5%	Under 25	82,687	13.6%
Female	313,999	51.5%	25-34	131,400	21.5%
Race	609,863	100%	35-44	115,063	18.9%
White	333,558	54.7%	45-54	108,341	17.8%
Black	120,005	19.7%	55-64	109,762	18.0%
Asian	42,074	6.9%	65 and over	62,610	10.3%
Other	6,659	1.1%	Occupation	609,863	100%
Chose Not To Answer	107,567	17.6%	Management	42,373	6.9%
		0	Business and financial	16,653	2.7%
Ethnicity	609,863	100%	Professional and related	77,327	12.7%
Hispanic	151,169	24.8%	Services	166,234	27.3%
Non-Hispanic	398,757	65.4%	Sales and related	66,627	10.9%
Chose Not To Answer	59,937	9.8%	Office and admin support	76,786	12.6%
Educational Attainment	609,863	100%	Farming, fishing and forestry	1,625	0.3%
Less Than High School	98,317	16.1%	Construction and extraction	33,795	5.5%
High School Graduate	232,707	38.2%	Installation, maint. and repair	16,324	2.7%
Some College Includ Assoc Deg	146,371	24.0%	Production	36,692	6.0%
Bachelors Degree and More	132,468	21.7%	Transp and material moving	74,935	12.3%
			Military	492	0.1%

Prepared by: Office of Research and Information, Division of Economic & Demographic Research, 2/15/2021

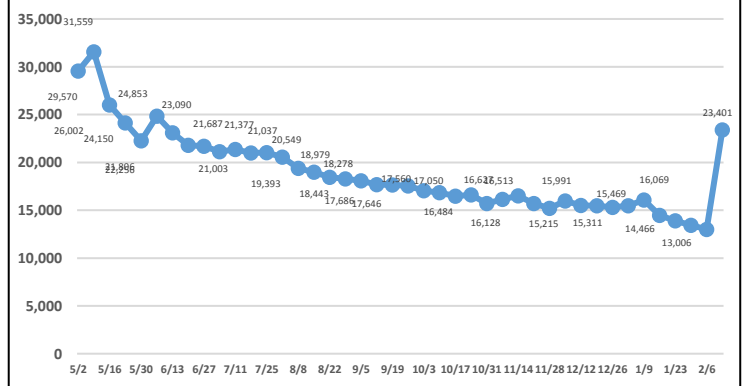
Total Continued Claims



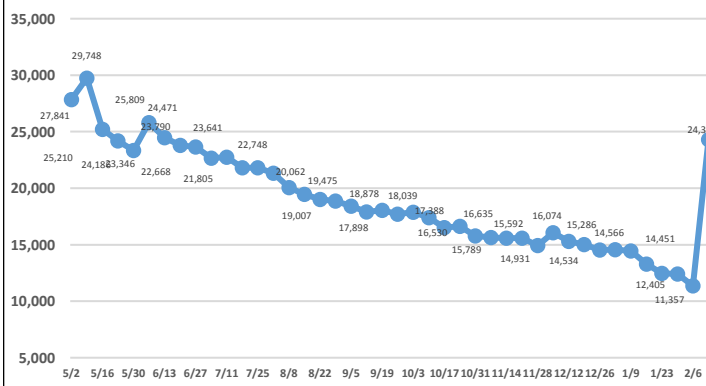
Construction Continued Claims



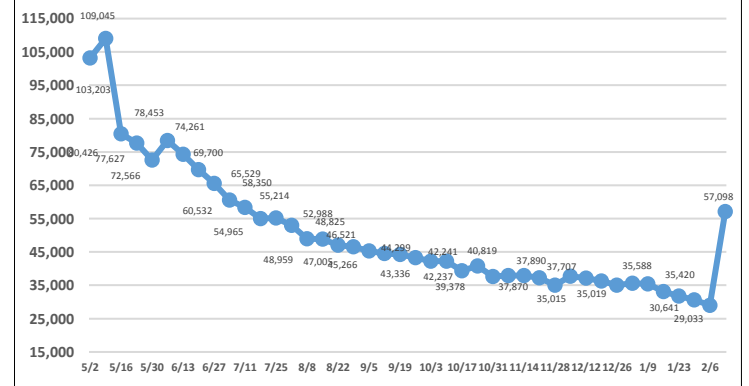
Manufacturing Continued Claims



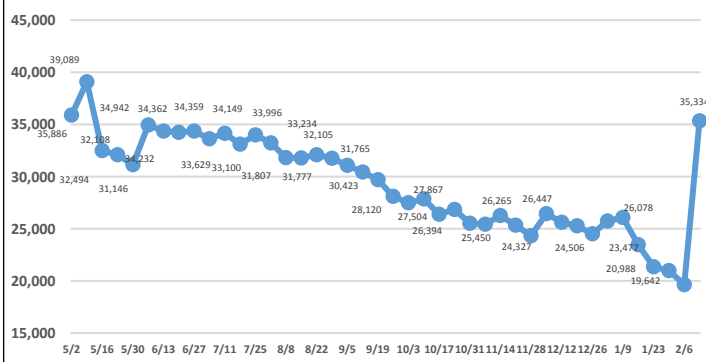
Wholesale Trade Continued Claims



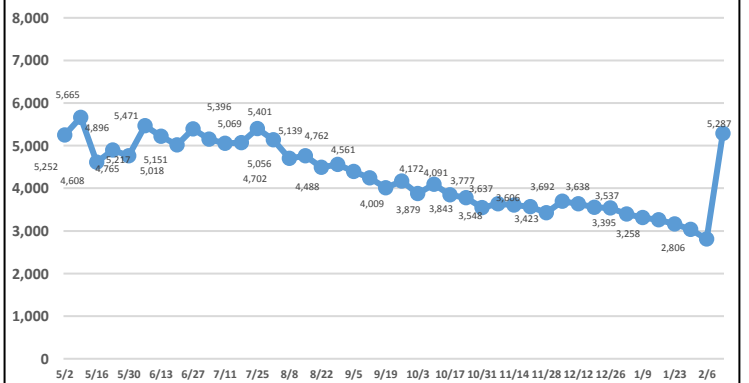
Retail Trade Continued Claims



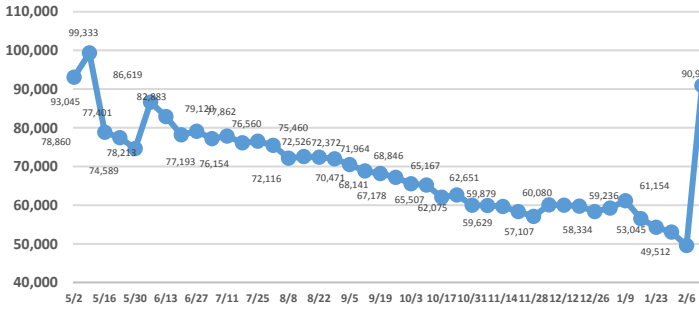
Transportation/Warehousing Continued Claims



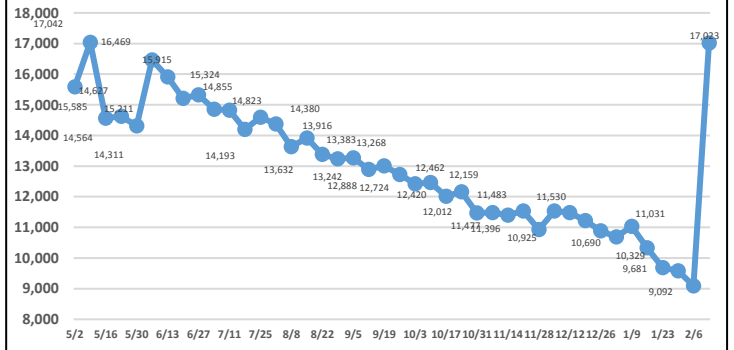
Information Continued Claims



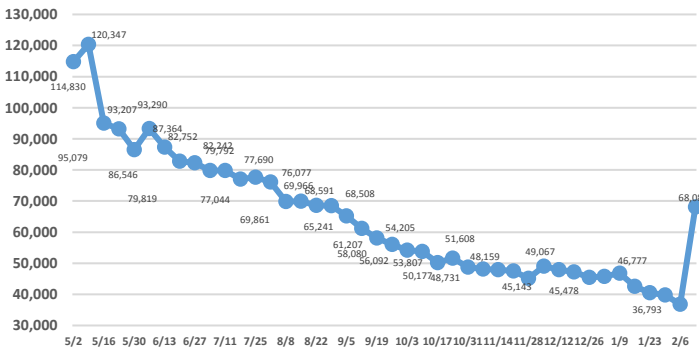
Professional & Business Services Continued Claims



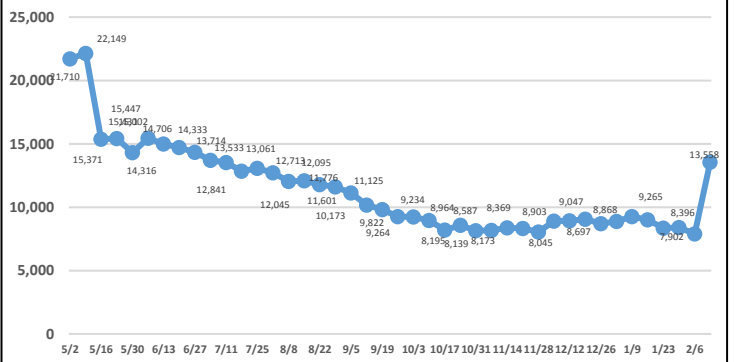
Financial Activities Continued Claims



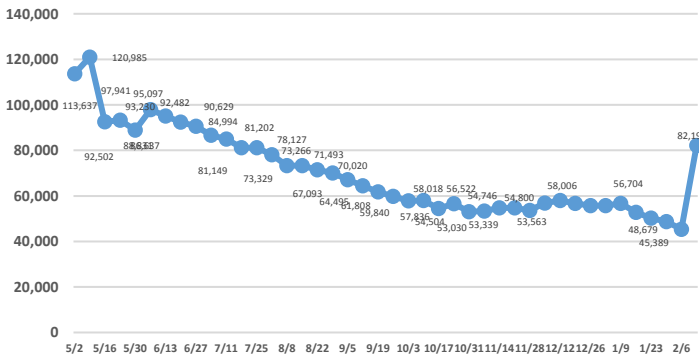
Education & Health Services Continued Claims



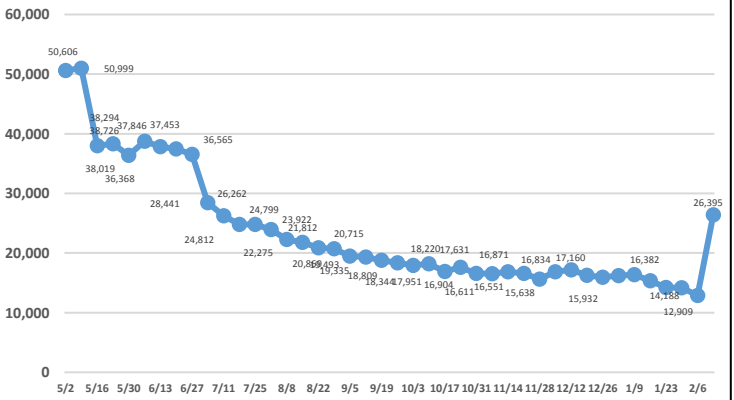
Arts, Entertainment, Recreation Continued Claims



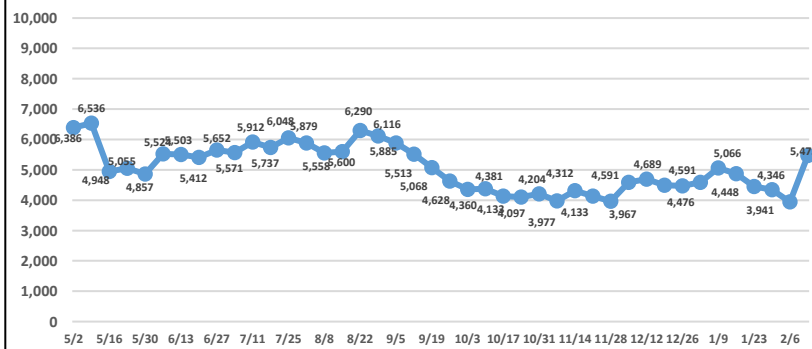
Accommodations & Food Services Continued Claims



Other Services Continued Claims



Public Administration Continued Claims



Note: Industry data breakouts above do not include PUA claimants (self employed/independent contract workers).