

New Jersey Initial Unemployment Claims by Industry - week ending 02/20/21

NAICS	CLAIMS	DESCRIPTION	Percentage of Weekly Claims
561	1,069	Administrative and support services	8.1%
238	1,009	Specialty trade contractors	7.6%
722	596	Food service and drinking places	4.5%
237	418	Heavy and civil engineering construction	3.2%
621	378	Ambulatory health care services (Dr. and Dentist offices)	2.8%
541	374	Professional, sci., and tech.services (lawyers, accts., engineers, archt, sci.research)	2.8%
611	338	Educational services	2.5%
236	247	Construction of buildings	1.9%
452	221	General Merchandise Stores	1.7%
445	203	Food and beverage stores	1.5%
624	180	Social assistance	1.4%
493	172	Warehousing and storage	1.3%
812	165	Personal and laundry services (Hair, nail salons, barbers, dry cleaners)	1.2%
423	163	Merchant Wholesalers, Durable Goods	1.2%
485	162	Transit and ground passenger transportation	1.2%
713	155	Amusement, gambling, recreation	1.2%
921	147	Executive, legislative and general government	1.1%
721	145	Accommodations	1.1%
448	144	Clothing and clothing accessory stores	1.1%
623	141	Nursing and residential care facilities	1.1%

Prepared by: NJDOL, Office of Research and Information, Division of Economic & Demographic Research 02/22/21

New Jersey Continued Unemployment Claims by Industry - 02/20/21

NAICS	CLAIMS	DESCRIPTION	Percentage of Total Claims	Percent of Industry Total Employment
561	37,780	Administrative and support services	6.2%	14.5%
722	36,960	Food service and drinking places	6.1%	14.4%
621	15,578	Ambulatory health care services (Dr. and Dentist offices)	2.6%	6.4%
238	14,303	Specialty trade contractors	2.4%	14.4%
541	13,662	Professional, sci., and tech.services (lawyers, accts., engineers, archt, sci.research)	2.3%	4.4%
721	12,298	Accommodations	2.0%	25.4%
611	11,576	Educational services	1.9%	2.9%
812	9,404	Personal and laundry services (Hair, nail salons, barbers, dry cleaners)	1.6%	14.8%
624	8,911	Social assistance	1.5%	7.9%
485	7,263	Transit and ground passenger transportation	1.2%	23.8%
423	6,963	Merchant Wholesalers, Durable Goods	1.1%	6.4%
713	6,565	Amusement, gambling, recreation	1.1%	14.2%
424	5,898	Merchant Wholesalers, Nondurable Goods	1.0%	6.5%
452	5,602	General Merchandise Stores	0.9%	8.1%
448	5,027	Clothing and clothing accessory stores	0.8%	11.4%
445	5,018	Food and beverage stores	0.8%	4.5%
493	4,689	Warehousing and storage	0.8%	7.4%
237	4,637	Heavy and civil engineering construction	0.8%	22.2%
623	4,634	Nursing and residential care facilities	0.8%	4.5%
441	4,633	Motor vehicle and parts dealers	0.8%	9.5%

Prepared by: NJDOL, Office of Research and Information, Division of Economic & Demographic Research 02/22/21

Claimants by Company Size Class 1Q2020

Claimants by Company Size Class 1Q2020				
Initials Week Ending 02/20/21			Continued 02/20/21	
SIZE CLASS	Initial Claims	% of Total	Continued Claims	% of Total
Unknown	4,435	33.44%	308,452	50.88%
5 or less	985	7.43%	43,083	7.11%
6 to 10	549	4.14%	21,103	3.48%
11 to 25	1,050	7.92%	35,516	5.86%
26 to 50	904	6.82%	30,139	4.97%
51 to 100	909	6.85%	28,269	4.66%
101 to 500	2,004	15.11%	60,761	10.02%
Over 500	2,428	18.31%	78,871	13.01%

Prepared by: NJDOL, Office of Research and Information, Division of Economic & Demographic Research
02/22/21

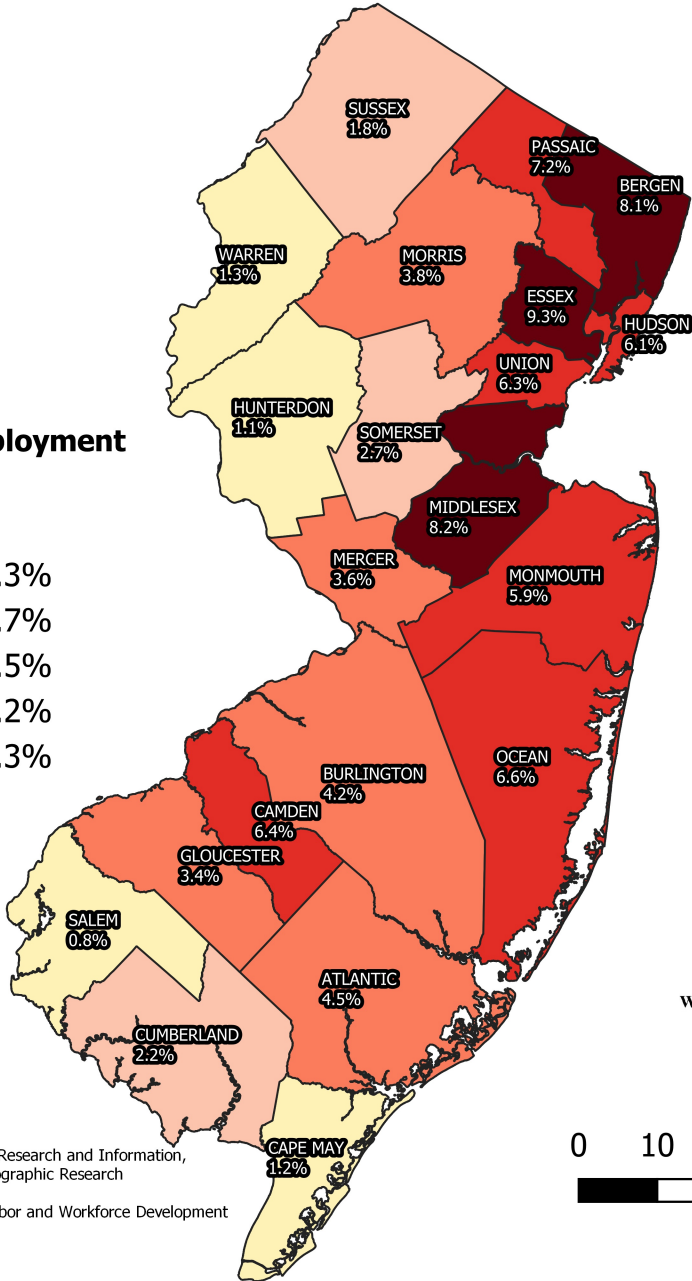
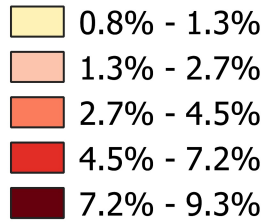
N. J. Initial Unemployment Claims by County week ending 2/20/2021		
County of Residence	Claims	Percent of Total
Atlantic	597	4.5%
Bergen	1,077	8.1%
Burlington	560	4.2%
Camden	844	6.4%
Cape May	163	1.2%
Cumberland	297	2.2%
Essex	1,238	9.3%
Gloucester	457	3.4%
Hudson	813	6.1%
Hunterdon	147	1.1%
Mercer	484	3.6%
Middlesex	1,086	8.2%
Monmouth	777	5.9%
Morris	498	3.8%
Ocean	878	6.6%
Passaic	953	7.2%
Salem	106	0.8%
Somerset	355	2.7%
Sussex	237	1.8%
Union	840	6.3%
Warren	166	1.3%
New Jersey Total	12,573	94.8%
Out-of-State Filers	691	5.2%
Grand Total	<u>13,264</u>	<u>100.0%</u>
Prepared by: Office of Research and Information, Division of Economic & Demographic Research 2/22/2021		

N. J. UI Continued Claimants by County week ending 2/20/21		
County of Residence	Claimants	Percent of Total
Atlantic	28,302	4.7%
Bergen	56,726	9.4%
Burlington	23,412	3.9%
Camden	35,366	5.8%
Cape May	8,261	1.4%
Cumberland	10,362	1.7%
Essex	60,586	10.0%
Gloucester	16,645	2.7%
Hudson	46,389	7.7%
Hunterdon	4,998	0.8%
Mercer	20,134	3.3%
Middlesex	51,402	8.5%
Monmouth	37,070	6.1%
Morris	23,579	3.9%
Ocean	34,703	5.7%
Passaic	46,938	7.7%
Salem	3,754	0.6%
Somerset	16,405	2.7%
Sussex	8,291	1.4%
Union	36,388	6.0%
Warren	5,500	0.9%
New Jersey Total	575,211	94.9%
Out-of-State Filers	30,983	5.1%
Grand Total	<u>606,194</u>	<u>100.0%</u>
Prepared by: Office of Research and Information, Division of Economic & Demographic Research 2/22/2021		

N.J. Unemployment Claims

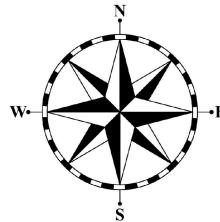
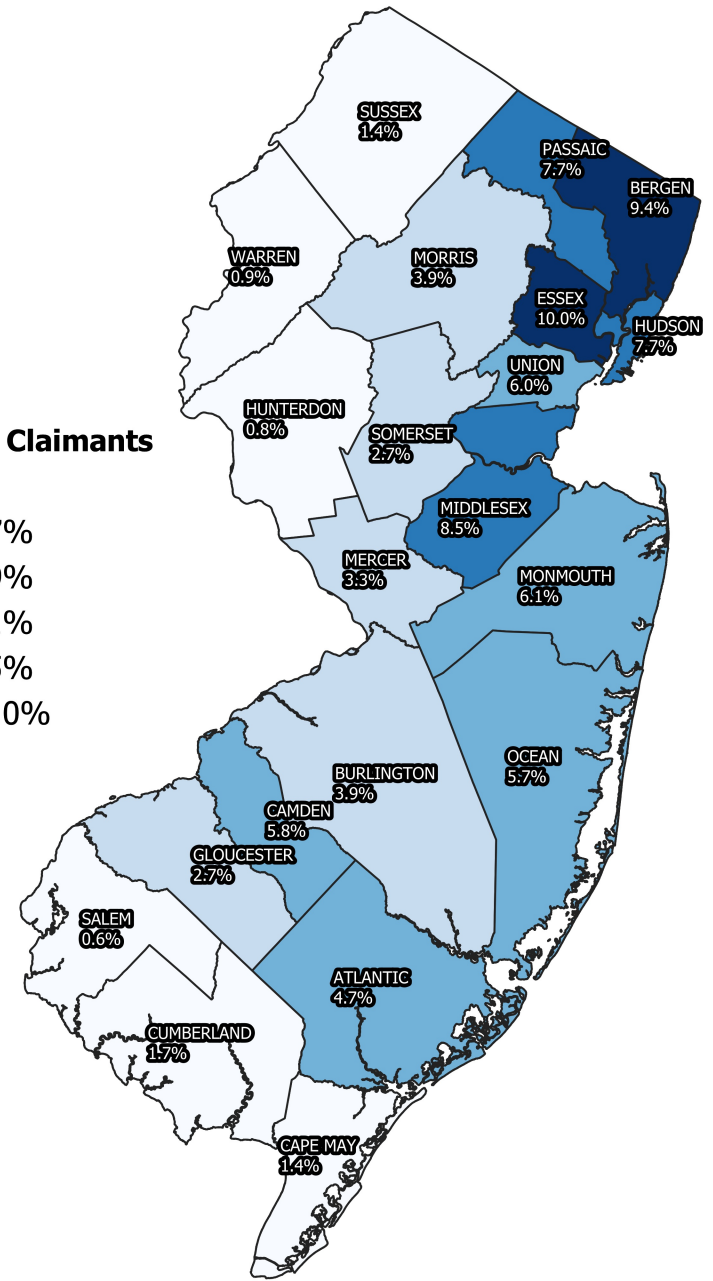
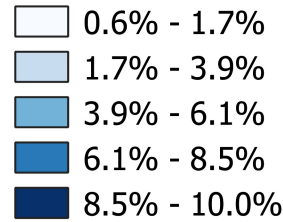
N.J. Initial Unemployment Claims by County

Initial Unemployment Claims 2/20/21



N.J. UI Continued Claimants by County

U.I. Continued Claimants 2/20/21



0 10 20 30 40 50 miles



Data Source: NJDOL, Office of Research and Information, Division of Economic and Demographic Research
 Prepared by: New Jersey Department of Labor and Workforce Development
 New Jersey State Data Center
 February 2021

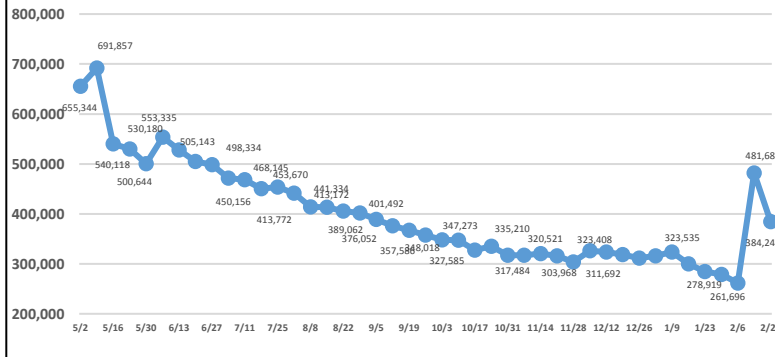
Characteristics of UI Initial Claimants Week ending February 20, 2021				
	Initial Claims	Percent		
Total Claimants	13,264	100%		
Gender	13,264	100%	Age of Claimant	13,264 100%
Male	7,539	56.8%	Under 25	2,292 17.3%
Female	5,725	43.2%	25-34	3,122 23.5%
Race	13,264	100%	35-44	2,481 18.7%
White	7,643	57.6%	45-54	2,367 17.8%
Black	2,561	19.3%	55-64	2,178 16.4%
Asian	694	5.2%	65 and over	824 6.2%
Other	124	0.9%	Occupation	13,264 100%
Chose Not To Answer	2,242	16.9%	Management	882 6.6%
Ethnicity	13,264	100%	Business and financial	341 2.6%
Hispanic	3,311	25.0%	Professional and related	1,578 11.9%
Non-Hispanic	8,628	65.0%	Services	2,674 20.2%
Chose Not To Answer	1,325	10.0%	Sales and related	1,182 8.9%
Educational Attainment	13,264	100%	Office and admin support	1,627 12.3%
Less Than High School	2,115	15.9%	Farming, fishing and forestry	47 0.4%
High School Graduate	5,477	41.3%	Construction and extraction	1,890 14.2%
Some College Includ Assoc Deg	3,071	23.2%	Installation, maint. and repair	433 3.3%
Bachelors Degree and More	2,601	19.6%	Production	957 7.2%
			Transp and material moving	1,637 12.3%
			Military	16 0.1%

Prepared by: Office of Research and Information, Division of Economic & Demographic Research, 2/22/2021

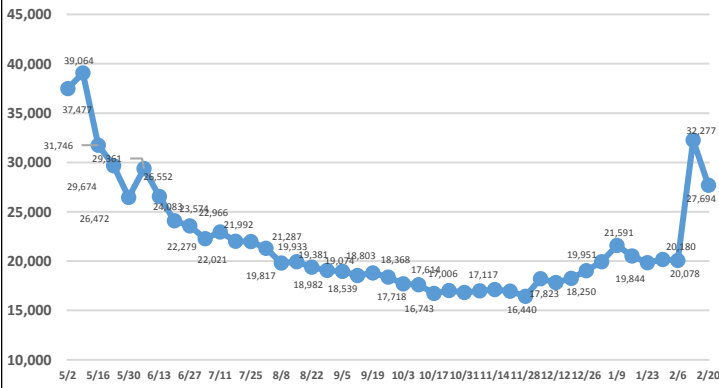
Characteristics of UI Continued Claimants Week ending February 20, 2021				
	Claimants	Percent		
Total Claimants	606,194	100%		
Gender	606,194	100%	Age of Claimant	606,194 100%
Male	293,631	48.4%	Under 25	81,096 13.4%
Female	312,563	51.6%	25-34	130,519 21.5%
Race	606,194	100%	35-44	114,508 18.9%
White	331,198	54.6%	45-54	107,576 17.7%
Black	120,267	19.8%	55-64	109,487 18.1%
Asian	41,729	6.9%	65 and over	63,008 10.4%
Other	6,554	1.1%	Occupation	606,194 100%
Chose Not To Answer	106,446	17.6%	Management	42,471 7.0%
Ethnicity	606,194	100%	Business and financial	16,416 2.7%
Hispanic	148,374	24.5%	Professional and related	76,789 12.7%
Non-Hispanic	398,147	65.7%	Services	163,651 27.0%
Chose Not To Answer	59,673	9.8%	Sales and related	66,543 11.0%
Educational Attainment	606,194	100%	Office and admin support	77,347 12.8%
Less Than High School	97,456	16.1%	Farming, fishing and forestry	1,615 0.3%
High School Graduate	231,191	38.1%	Construction and extraction	33,804 5.6%
Some College Includ Assoc Deg	146,061	24.1%	Installation, maint. and repair	16,332 2.7%
Bachelors Degree and More	131,486	21.7%	Production	36,286 6.0%
			Transp and material moving	74,457 12.3%
			Military	483 0.1%

Prepared by: Office of Research and Information, Division of Economic & Demographic Research, 2/22/2021

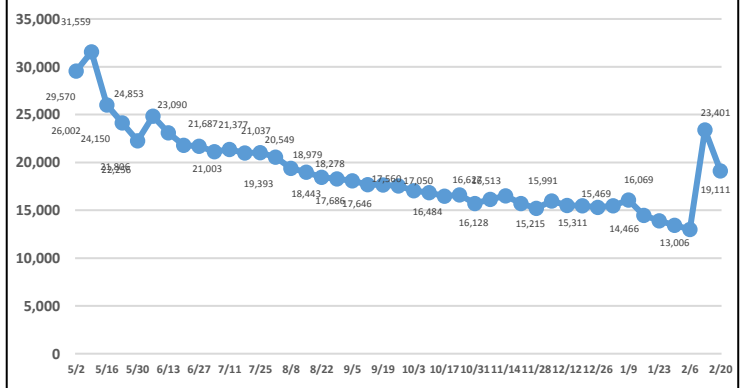
Total Continued Claims



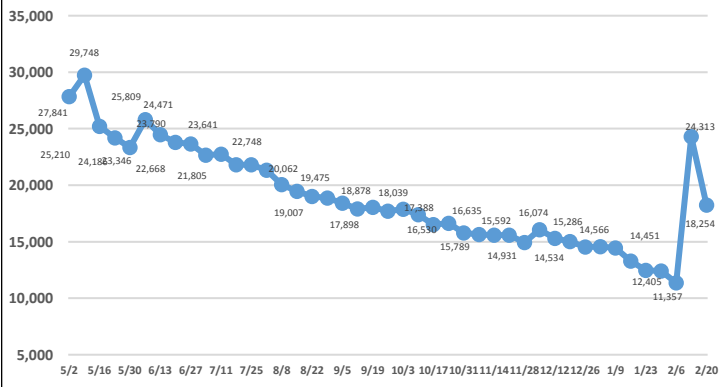
Construction Continued Claims



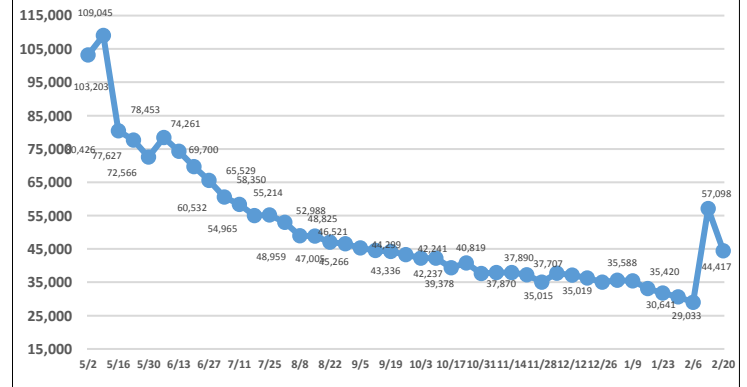
Manufacturing Continued Claims



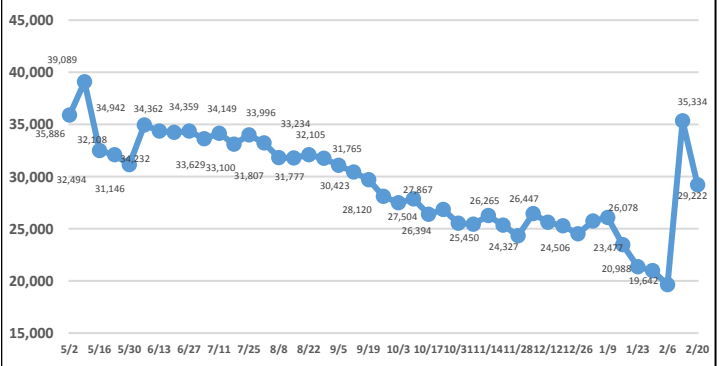
Wholesale Trade Continued Claims



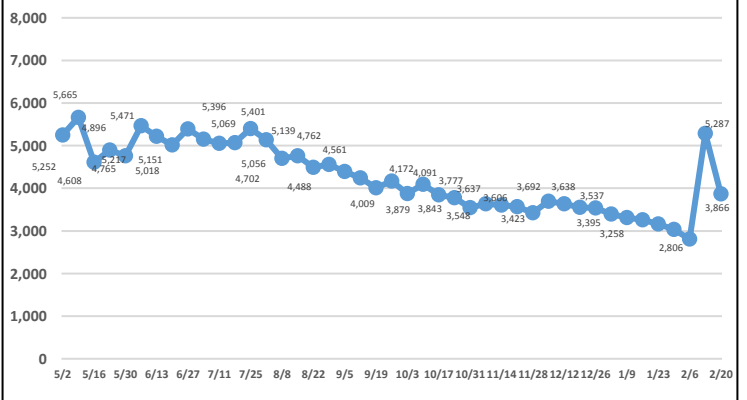
Retail Trade Continued Claims



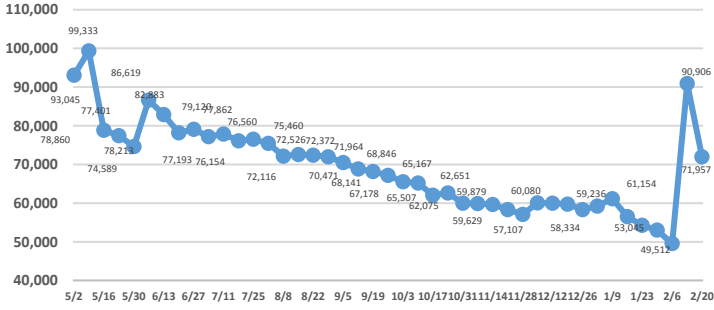
Transportation/Warehousing Continued Claims



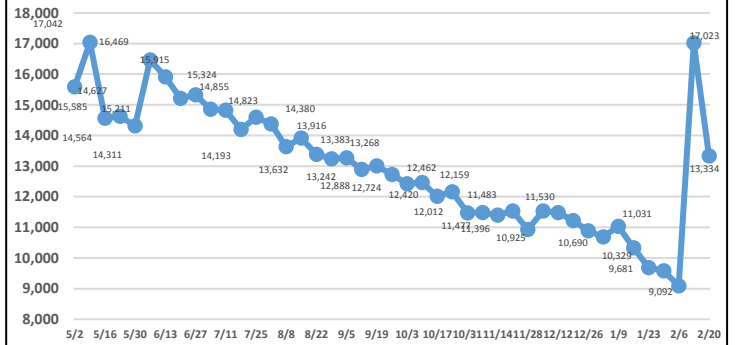
Information Continued Claims



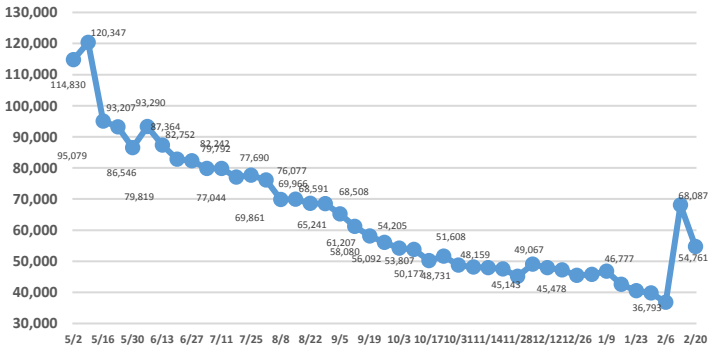
Professional & Business Services Continued Claims



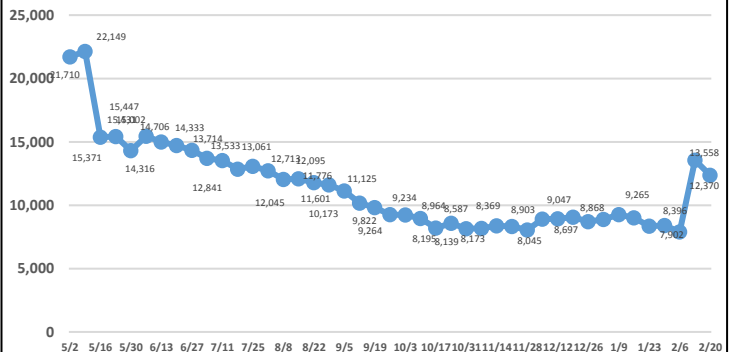
Financial Activities Continued Claims



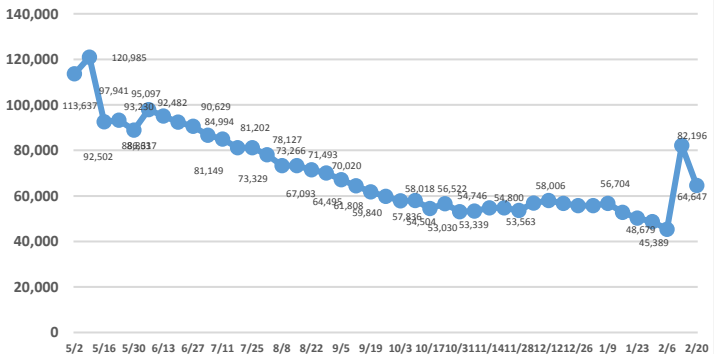
Education & Health Services Continued Claims



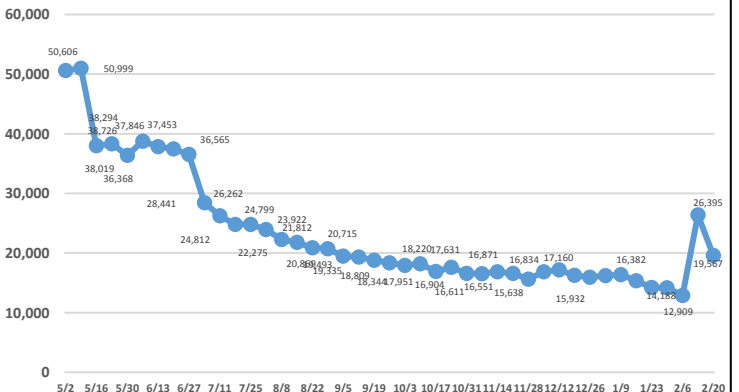
Arts, Entertainment, Recreation Continued Claims



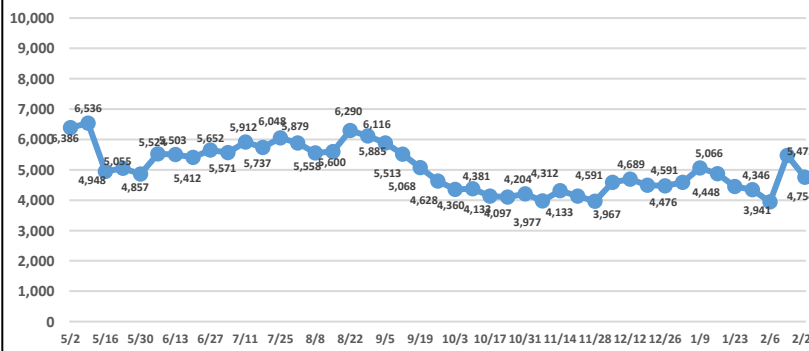
Accommodations & Food Services Continued Claims



Other Services Continued Claims



Public Administration Continued Claims



Note: Industry data breakouts above do not include PUA claimants (self employed/independent contract workers).