

New Jersey Initial Unemployment Claims by Industry - week ending 02/27/21

NAICS	CLAIMS	DESCRIPTION	Percentage of Weekly Claims
561	1,045	Administrative and support services	7.8%
238	802	Specialty trade contractors	6.0%
722	546	Food service and drinking places	4.1%
621	414	Ambulatory health care services (Dr. and Dentist offices)	3.1%
541	357	Professional, sci., and tech.services (lawyers, accts., engineers, archt, sci.research)	2.7%
611	302	Educational services	2.3%
237	302	Heavy and civil engineering construction	2.3%
452	210	General Merchandise Stores	1.6%
445	203	Food and beverage stores	1.5%
624	198	Social assistance	1.5%
236	189	Construction of buildings	1.4%
493	184	Warehousing and storage	1.4%
812	179	Personal and laundry services (Hair, nail salons, barbers, dry cleaners)	1.3%
423	162	Merchant Wholesalers, Durable Goods	1.2%
485	160	Transit and ground passenger transportation	1.2%
623	156	Nursing and residential care facilities	1.2%
721	156	Accommodations	1.2%
424	135	Merchant Wholesalers, Nondurable Goods	1.0%
921	130	Executive, legislative and general government	1.0%
448	129	Clothing and clothing accessory stores	1.0%

Prepared by: NJDOL, Office of Research and Information, Division of Economic & Demographic Research 03/01/21

New Jersey Continued Unemployment Claims by Industry - 02/27/21

NAICS	CLAIMS	DESCRIPTION	Percentage of Total Claims	Percent of Industry Total Employment
561	39,135	Administrative and support services	6.3%	15.0%
722	37,501	Food service and drinking places	6.1%	14.6%
621	15,920	Ambulatory health care services (Dr. and Dentist offices)	2.6%	6.5%
238	15,022	Specialty trade contractors	2.4%	15.1%
541	13,908	Professional, sci., and tech.services (lawyers, accts., engineers, archt, sci.research)	2.3%	4.5%
721	12,317	Accommodations	2.0%	25.5%
611	11,706	Educational services	1.9%	3.0%
812	9,578	Personal and laundry services (Hair, nail salons, barbers, dry cleaners)	1.6%	15.1%
624	9,033	Social assistance	1.5%	8.0%
485	7,566	Transit and ground passenger transportation	1.2%	24.8%
423	7,148	Merchant Wholesalers, Durable Goods	1.2%	6.6%
713	6,757	Amusement, gambling, recreation	1.1%	14.6%
424	6,049	Merchant Wholesalers, Nondurable Goods	1.0%	6.6%
452	5,746	General Merchandise Stores	0.9%	8.3%
445	5,236	Food and beverage stores	0.8%	4.7%
448	5,094	Clothing and clothing accessory stores	0.8%	11.6%
493	4,829	Warehousing and storage	0.8%	7.7%
623	4,817	Nursing and residential care facilities	0.8%	4.7%
237	4,816	Heavy and civil engineering construction	0.8%	23.1%
441	4,756	Motor vehicle and parts dealers	0.8%	9.7%

Prepared by: NJDOL, Office of Research and Information, Division of Economic & Demographic Research 03/01/21

Claimants by Company Size Class 1Q2020				
Initials Week Ending 02/27/21			Continued 02/27/21	
SIZE CLASS	Initial Claims	% of Total	Continued Claims	% of Total
Unknown	4,982	37.21%	311,411	50.48%
5 or less	936	6.99%	44,223	7.17%
6 to 10	566	4.23%	21,516	3.49%
11 to 25	916	6.84%	36,579	5.93%
26 to 50	813	6.07%	30,955	5.02%
51 to 100	837	6.25%	28,942	4.69%
101 to 500	1,928	14.40%	62,520	10.13%
Over 500	2,411	18.01%	80,812	13.10%
Prepared by: NJDOL, Office of Research and Information, Division of Economic & Demographic Research 03/01/21				

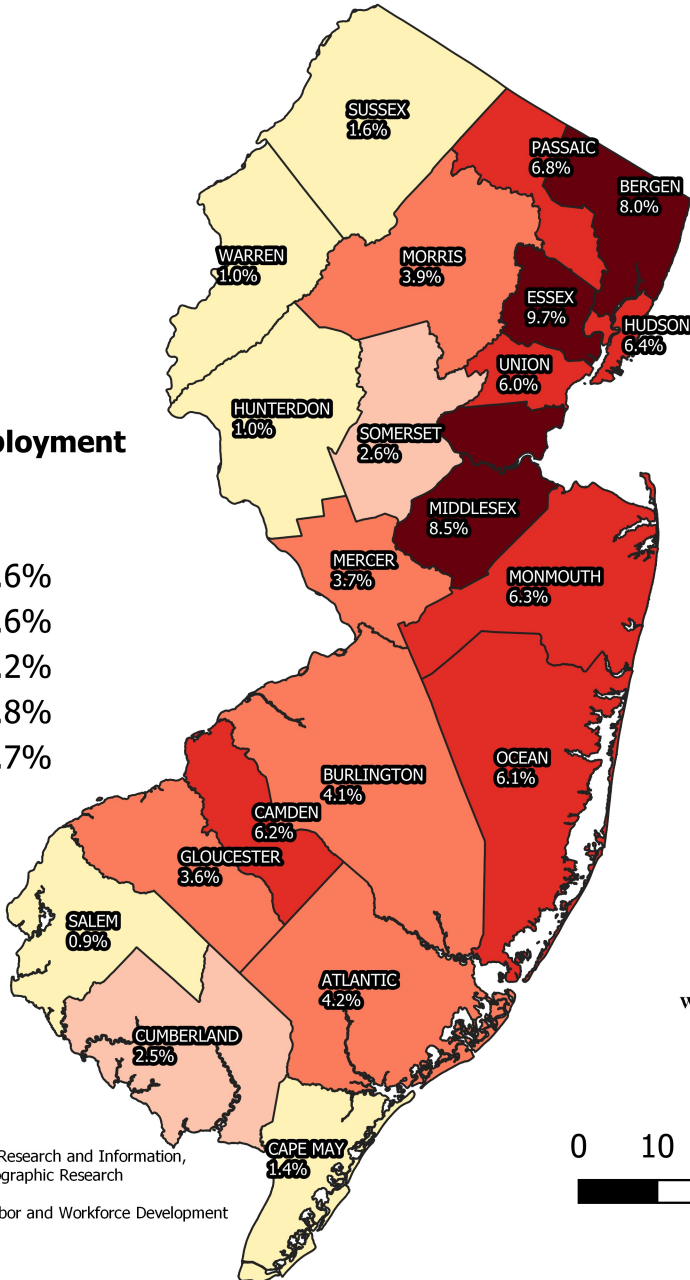
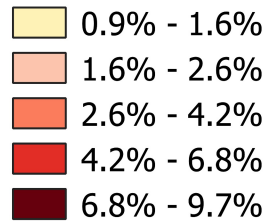
N. J. Initial Unemployment Claims by County week ending 2/27/2021		
County of Residence	Claims	Percent of Total
Atlantic	563	4.2%
Bergen	1,071	8.0%
Burlington	546	4.1%
Camden	834	6.2%
Cape May	187	1.4%
Cumberland	336	2.5%
Essex	1,299	9.7%
Gloucester	478	3.6%
Hudson	860	6.4%
Hunterdon	128	1.0%
Mercer	499	3.7%
Middlesex	1,135	8.5%
Monmouth	838	6.3%
Morris	517	3.9%
Ocean	821	6.1%
Passaic	916	6.8%
Salem	122	0.9%
Somerset	346	2.6%
Sussex	220	1.6%
Union	810	6.0%
Warren	140	1.0%
New Jersey Total	12,666	94.6%
Out-of-State Filers	723	5.4%
Grand Total	<u>13,389</u>	<u>100.0%</u>
Prepared by: Office of Research and Information, Division of Economic & Demographic Research 3/1/2021		

N. J. UI Continued Claimants by County week ending 2/27/21		
County of Residence	Claimants	Percent of Total
Atlantic	28,483	4.6%
Bergen	57,681	9.3%
Burlington	23,804	3.9%
Camden	35,979	5.8%
Cape May	8,449	1.4%
Cumberland	10,649	1.7%
Essex	61,668	10.0%
Gloucester	16,884	2.7%
Hudson	47,077	7.6%
Hunterdon	5,101	0.8%
Mercer	20,514	3.3%
Middlesex	52,424	8.5%
Monmouth	37,565	6.1%
Morris	23,929	3.9%
Ocean	35,190	5.7%
Passaic	47,669	7.7%
Salem	3,809	0.6%
Somerset	16,701	2.7%
Sussex	8,549	1.4%
Union	37,210	6.0%
Warren	5,643	0.9%
New Jersey Total	584,978	94.8%
Out-of-State Filers	31,980	5.2%
Grand Total	<u>616,958</u>	<u>100.0%</u>
Prepared by: Office of Research and Information, Division of Economic & Demographic Research 3/1/2021		

N.J. Unemployment Claims

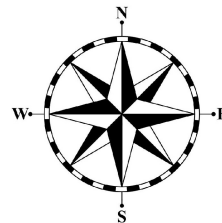
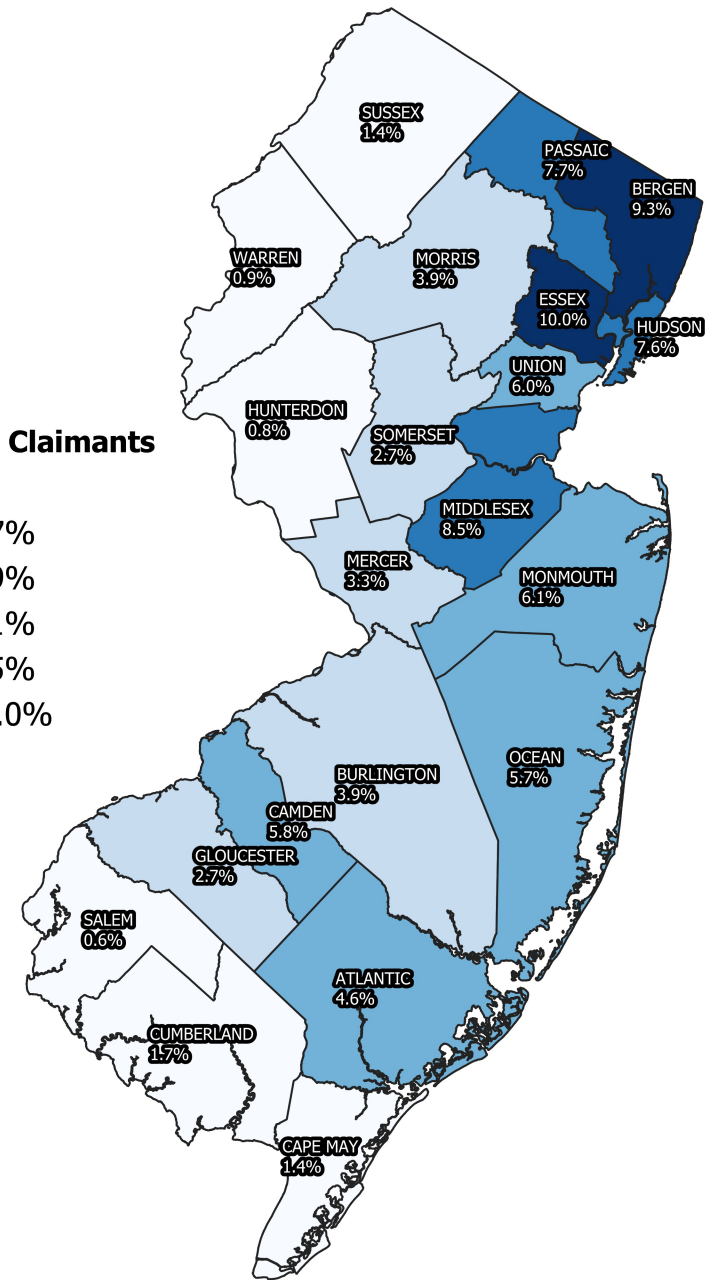
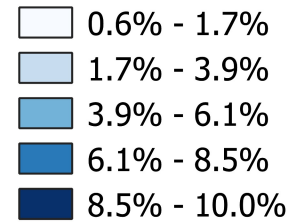
N.J. Initial Unemployment Claims by County

Initial Unemployment Claims 2/27/21



N.J. UI Continued Claimants by County

U.I. Continued Claimants 2/27/21

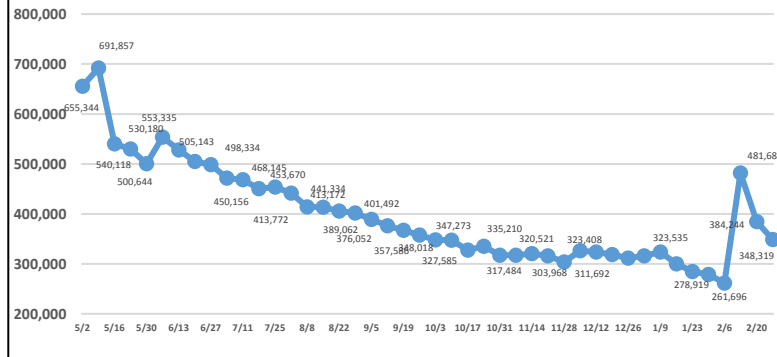


0 10 20 30 40 50 miles

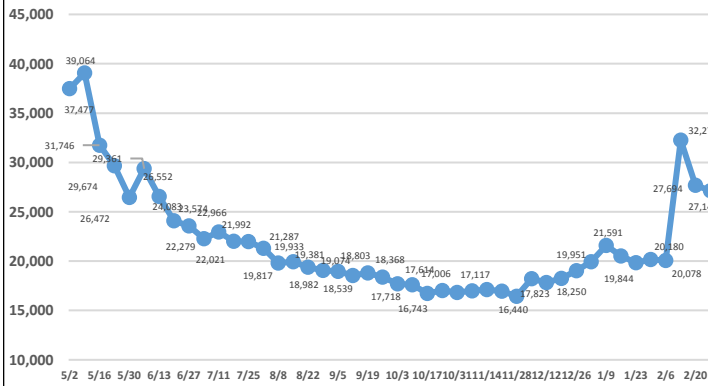
Characteristics of UI Initial Claimants Week ending February 27, 2021				
	Initial Claims	Percent		
Total Claimants	13,389	100%		
Gender	13,389	100%	Age of Claimant	13,389
Male	7,385	55.2%	Under 25	2,306
Female	6,004	44.8%	25-34	3,252
			35-44	2,405
Race	13,389	100%	45-54	2,407
White	7,560	56.5%	55-64	2,218
Black	2,682	20.0%	65 and over	801
Asian	689	5.1%		
Other	138	1.0%	Occupation	13,389
Chose Not To Answer	2,320	17.3%	Management	928
Ethnicity	13,389	100%	Business and financial	331
Hispanic	3,464	25.9%	Professional and related	1,552
Non-Hispanic	8,576	64.1%	Services	2,719
Chose Not To Answer	1,349	10.1%	Sales and related	1,355
Educational Attainment	13,389	100%	Office and admin support	1,730
Less Than High School	2,206	16.5%	Farming, fishing and forestry	26
High School Graduate	5,369	40.1%	Construction and extraction	1,572
Some College Includ Assoc Deg	3,143	23.5%	Installation, maint. and repair	436
Bachelors Degree and More	2,671	19.9%	Production	1,041
			Transp and material moving	1,690
			Military	9
Prepared by: Office of Research and Information, Division of Economic & Demographic Research, 3/1/2021				

Characteristics of UI Continued Claimants Week ending February 27, 2021				
	Claimants	Percent		
Total Claimants	616,958	100%		
Gender	616,958	100%	Age of Claimant	616,958
Male	299,749	48.6%	Under 25	81,987
Female	317,209	51.4%	25-34	132,830
			35-44	116,696
Race	616,958	100%	45-54	109,703
White	336,912	54.6%	55-64	111,590
Black	122,814	19.9%	65 and over	64,152
Asian	42,268	6.9%		
Other	6,739	1.1%	Occupation	616,958
Chose Not To Answer	108,225	17.5%	Management	43,031
Ethnicity	616,958	100%	Business and financial	16,705
Hispanic	151,230	24.5%	Professional and related	77,767
Non-Hispanic	404,854	65.6%	Services	166,147
Chose Not To Answer	60,874	9.9%	Sales and related	67,373
Educational Attainment	616,958	100%	Office and admin support	78,582
Less Than High School	99,373	16.1%	Farming, fishing and forestry	1,664
High School Graduate	236,150	38.3%	Construction and extraction	35,070
Some College Includ Assoc Deg	148,325	24.0%	Installation, maint. and repair	16,540
Bachelors Degree and More	133,110	21.6%	Production	37,403
			Transp and material moving	76,161
			Military	515
Prepared by: Office of Research and Information, Division of Economic & Demographic Research, 3/1/2021				

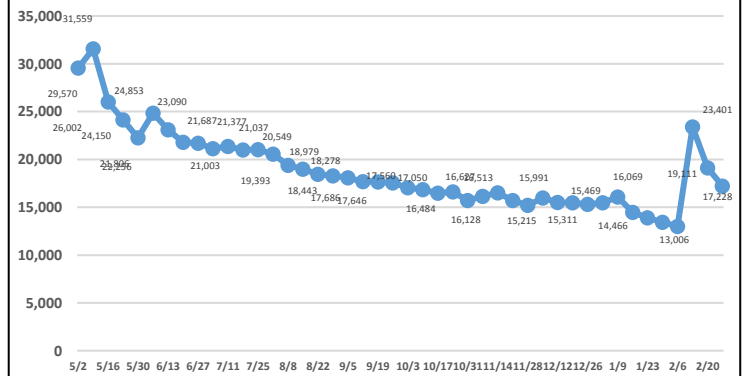
Total Continued Claims



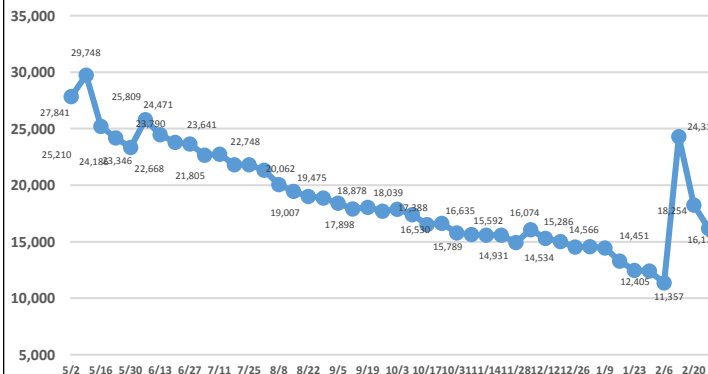
Construction Continued Claims



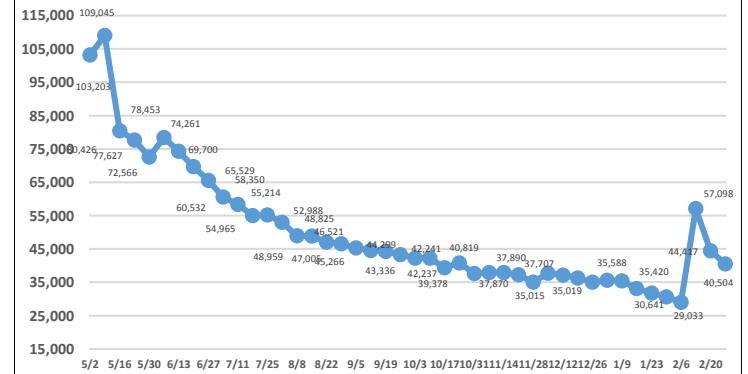
Manufacturing Continued Claims



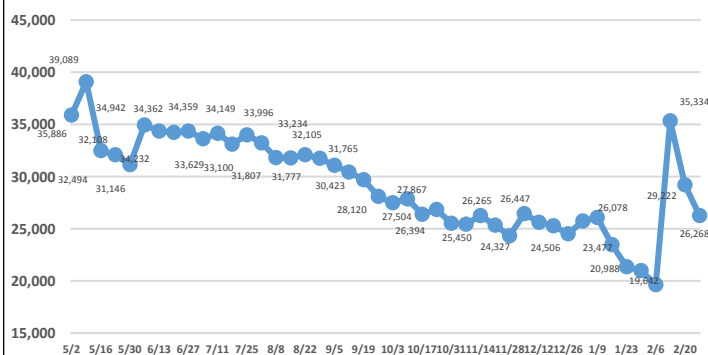
Wholesale Trade Continued Claims



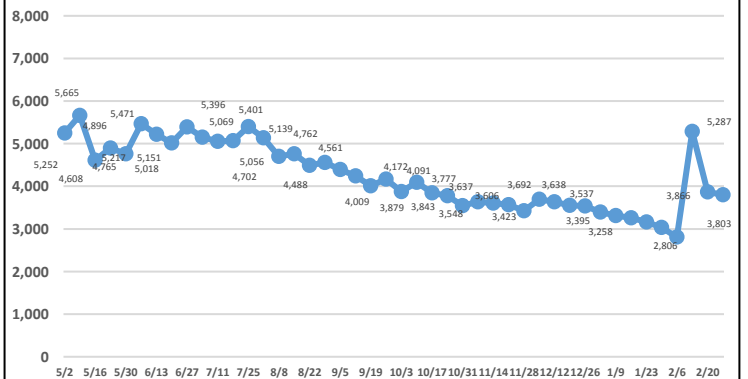
Retail Trade Continued Claims



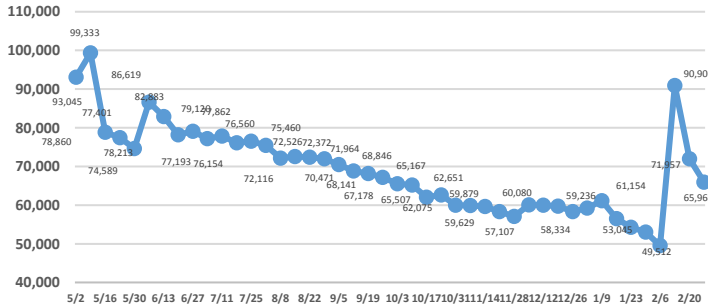
Transportation/Warehousing Continued Claims



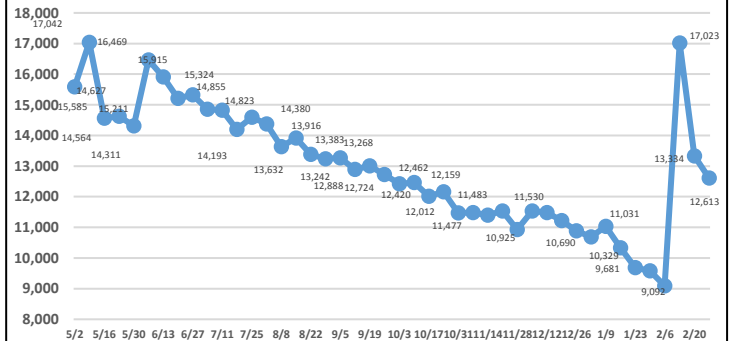
Information Continued Claims



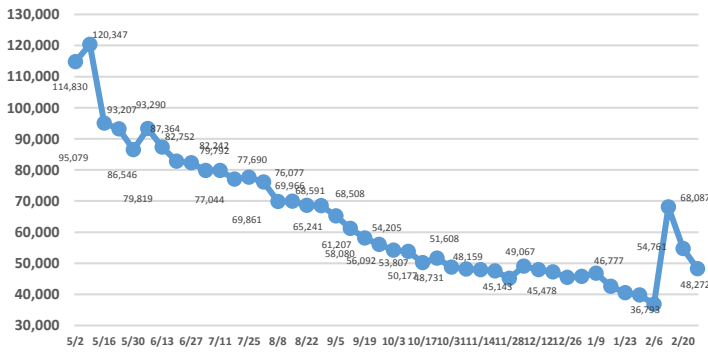
Professional & Business Services Continued Claims



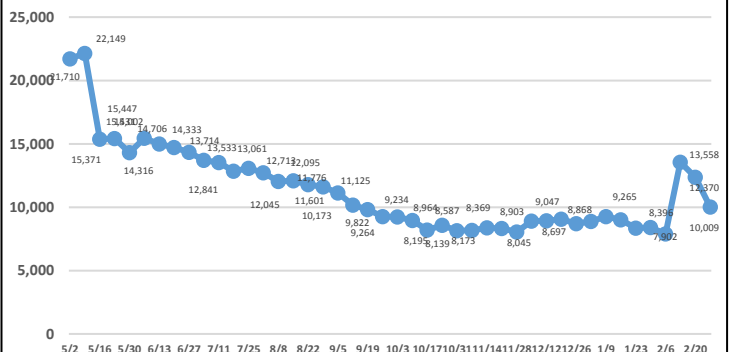
Financial Activities Continued Claims



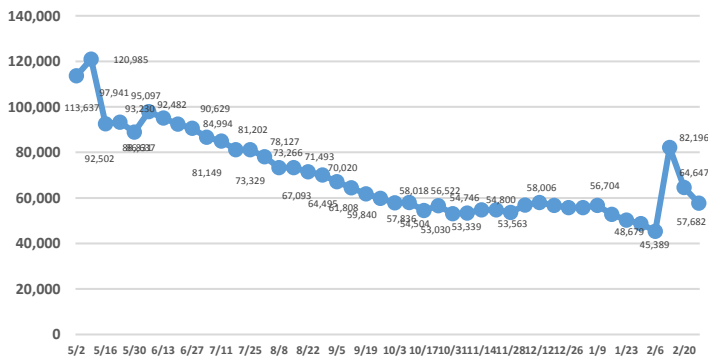
Education & Health Services Continued Claims



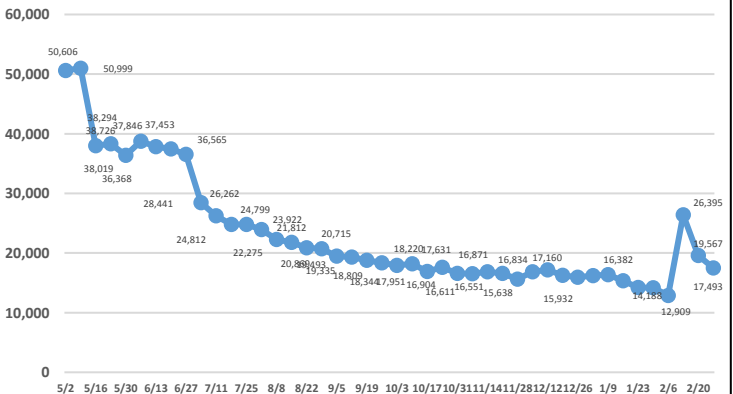
Arts, Entertainment, Recreation Continued Claims



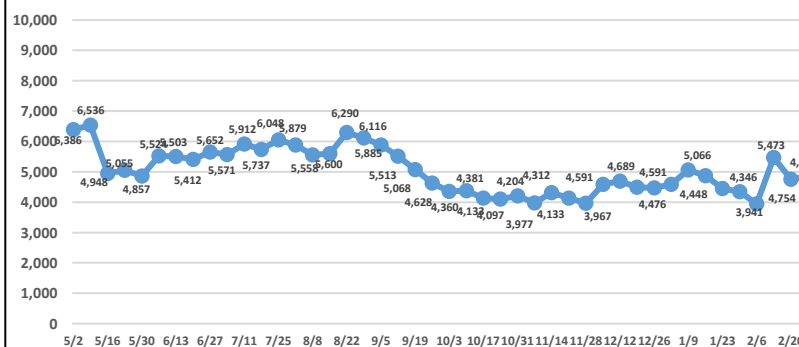
Accommodations & Food Services Continued Claims



Other Services Continued Claims



Public Administration Continued Claims



Note: Industry data breakouts above do not include PUA claimants (self employed/independent contract workers).