

### New Jersey Initial Unemployment Claims by Industry - week ending 03/06/21

NAICS	CLAIMS	DESCRIPTION	Percentage of Weekly Claims
561	877	Administrative and support services	7.3%
238	623	Specialty trade contractors	5.2%
722	468	Food service and drinking places	3.9%
621	368	Ambulatory health care services (Dr. and Dentist offices)	3.1%
541	359	Professional, sci., and tech.services (lawyers, accts., engineers, archt, sci.research)	3.0%
452	292	General Merchandise Stores	2.4%
611	275	Educational services	2.3%
236	191	Construction of buildings	1.6%
624	185	Social assistance	1.5%
237	184	Heavy and civil engineering construction	1.5%
493	175	Warehousing and storage	1.5%
423	174	Merchant Wholesalers, Durable Goods	1.4%
812	159	Personal and laundry services (Hair, nail salons, barbers, dry cleaners)	1.3%
445	157	Food and beverage stores	1.3%
721	144	Accommodations	1.2%
623	142	Nursing and residential care facilities	1.2%
622	129	Hospitals	1.1%
424	126	Merchant Wholesalers, Nondurable Goods	1.0%
492	126	Couriers and messengers	1.0%
448	114	Clothing and clothing accessory stores	0.9%

Prepared by: NJDOL, Office of Research and Information, Division of Economic & Demographic Research 03/08/21

### New Jersey Continued Unemployment Claims by Industry - 03/06/21

NAICS	CLAIMS	DESCRIPTION	Percentage of Total Claims	Percent of Industry Total Employment
561	38,146	Administrative and support services	6.3%	14.6%
722	36,287	Food service and drinking places	6.0%	14.1%
621	15,575	Ambulatory health care services (Dr. and Dentist offices)	2.6%	6.4%
238	14,285	Specialty trade contractors	2.4%	14.4%
541	13,592	Professional, sci., and tech.services (lawyers, accts., engineers, archt, sci.research)	2.2%	4.4%
721	12,322	Accommodations	2.0%	25.5%
611	11,235	Educational services	1.9%	2.9%
812	9,329	Personal and laundry services (Hair, nail salons, barbers, dry cleaners)	1.5%	14.7%
624	8,858	Social assistance	1.5%	7.9%
423	6,995	Merchant Wholesalers, Durable Goods	1.2%	6.4%
485	6,734	Transit and ground passenger transportation	1.1%	22.0%
713	6,597	Amusement, gambling, recreation	1.1%	14.2%
424	5,960	Merchant Wholesalers, Nondurable Goods	1.0%	6.5%
452	5,629	General Merchandise Stores	0.9%	8.1%
445	5,126	Food and beverage stores	0.8%	4.6%
448	5,013	Clothing and clothing accessory stores	0.8%	11.4%
493	4,755	Warehousing and storage	0.8%	7.5%
623	4,701	Nursing and residential care facilities	0.8%	4.6%
441	4,631	Motor vehicle and parts dealers	0.8%	9.5%
237	4,344	Heavy and civil engineering construction	0.7%	20.8%

Prepared by: NJDOL, Office of Research and Information, Division of Economic & Demographic Research 03/08/21

Claimants by Company Size Class 1Q2020				
Initials Week Ending 03/06/21			Continued 03/06/21	
SIZE CLASS	Initial Claims	% of Total	Continued Claims	% of Total
Unknown	4,557	37.89%	307,711	50.90%
5 or less	813	6.76%	43,357	7.17%
6 to 10	443	3.68%	21,074	3.49%
11 to 25	845	7.03%	35,569	5.88%
26 to 50	711	5.91%	30,004	4.96%
51 to 100	692	5.75%	28,036	4.64%
101 to 500	1,671	13.89%	60,267	9.97%
Over 500	2,296	19.09%	78,501	12.99%
Prepared by: NJDOL, Office of Research and Information, Division of Economic & Demographic Research 03/08/21				

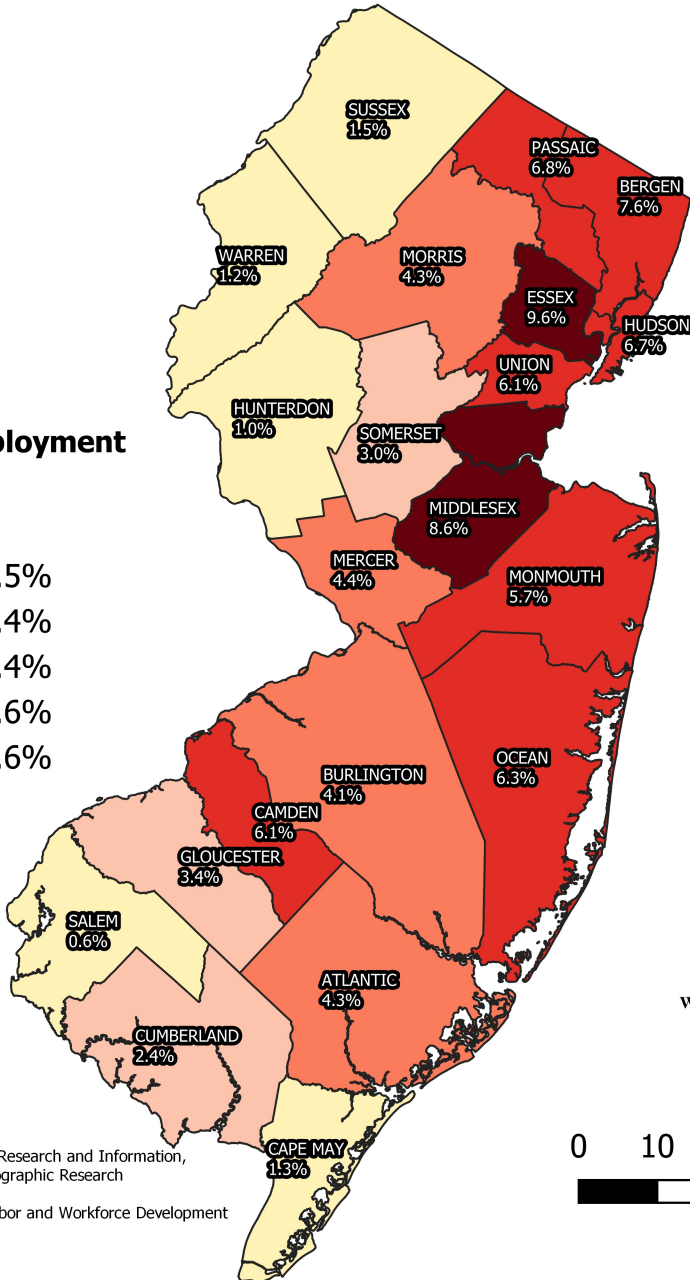
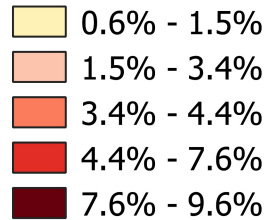
N. J. Initial Unemployment Claims by County week ending 3/6/2021		
County of Residence	Claims	Percent of Total
Atlantic	517	4.3%
Bergen	918	7.6%
Burlington	495	4.1%
Camden	731	6.1%
Cape May	160	1.3%
Cumberland	283	2.4%
Essex	1,157	9.6%
Gloucester	403	3.4%
Hudson	810	6.7%
Hunterdon	119	1.0%
Mercer	528	4.4%
Middlesex	1,033	8.6%
Monmouth	683	5.7%
Morris	521	4.3%
Ocean	758	6.3%
Passaic	813	6.8%
Salem	77	0.6%
Somerset	361	3.0%
Sussex	183	1.5%
Union	732	6.1%
Warren	150	1.2%
New Jersey Total	11,432	95.0%
Out-of-State Filers	596	5.0%
<b>Grand Total</b>	<b><u>12,028</u></b>	<b><u>100.0%</u></b>
Prepared by: Office of Research and Information, Division of Economic & Demographic Research 3/8/2021		

N. J. UI Continued Claimants by County week ending 3/6/21		
County of Residence	Claimants	Percent of Total
Atlantic	27,967	4.6%
Bergen	56,603	9.4%
Burlington	23,286	3.9%
Camden	35,210	5.8%
Cape May	8,362	1.4%
Cumberland	10,295	1.7%
Essex	60,448	10.0%
Gloucester	16,462	2.7%
Hudson	46,307	7.7%
Hunterdon	4,973	0.8%
Mercer	20,101	3.3%
Middlesex	51,293	8.5%
Monmouth	36,773	6.1%
Morris	23,517	3.9%
Ocean	34,486	5.7%
Passaic	47,010	7.8%
Salem	3,729	0.6%
Somerset	16,270	2.7%
Sussex	8,261	1.4%
Union	36,433	6.0%
Warren	5,497	0.9%
New Jersey Total	573,283	94.8%
Out-of-State Filers	31,236	5.2%
<b>Grand Total</b>	<b><u>604,519</u></b>	<b><u>100.0%</u></b>
Prepared by: Office of Research and Information, Division of Economic & Demographic Research 3/8/2021		

# N.J. Unemployment Claims

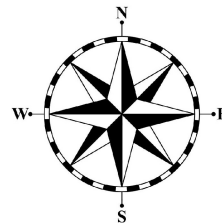
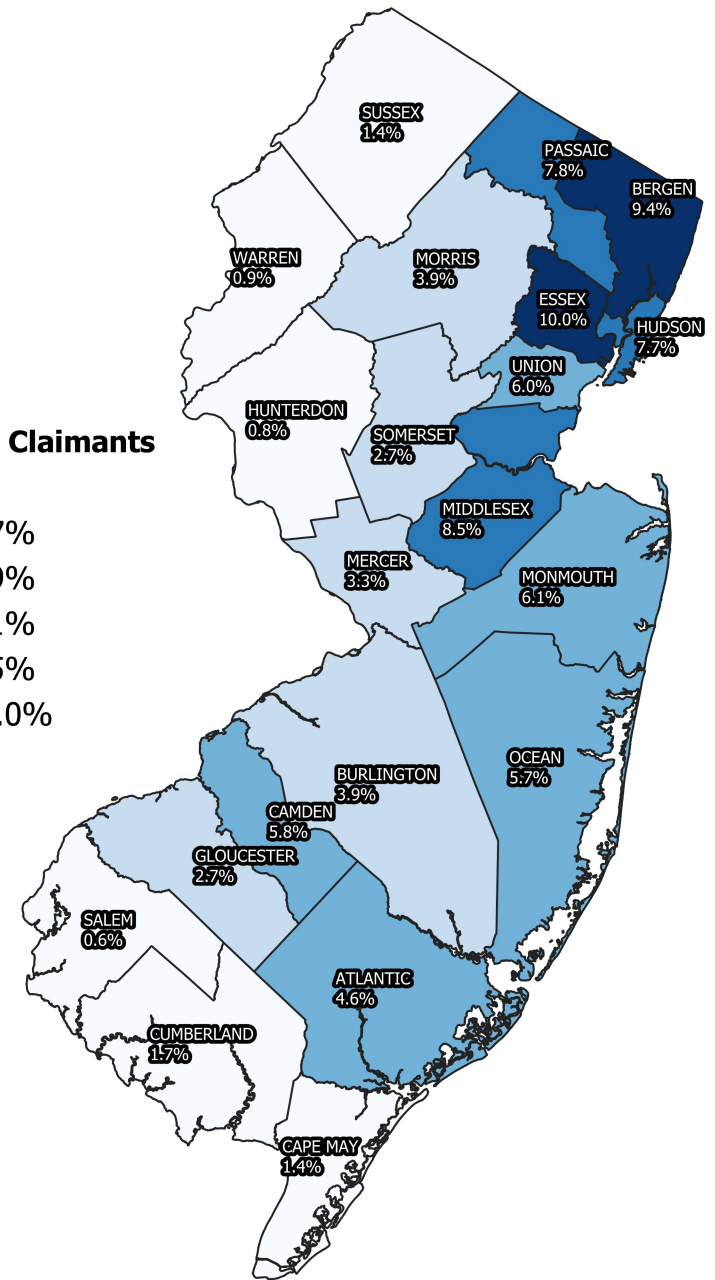
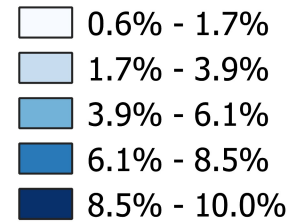
## N.J. Initial Unemployment Claims by County

### Initial Unemployment Claims 3/06/21



## N.J. UI Continued Claimants by County

### U.I. Continued Claimants 3/06/21



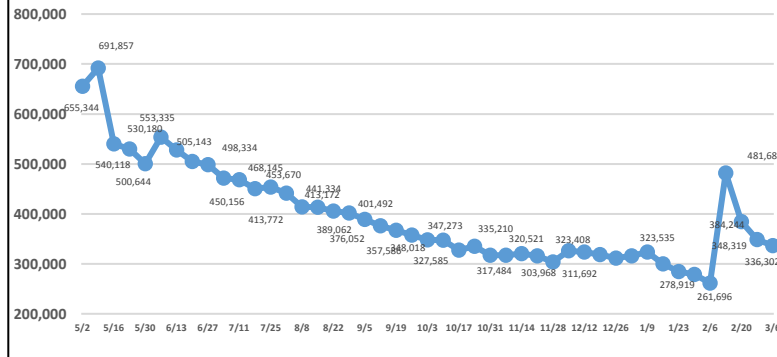
0 10 20 30 40 50 miles



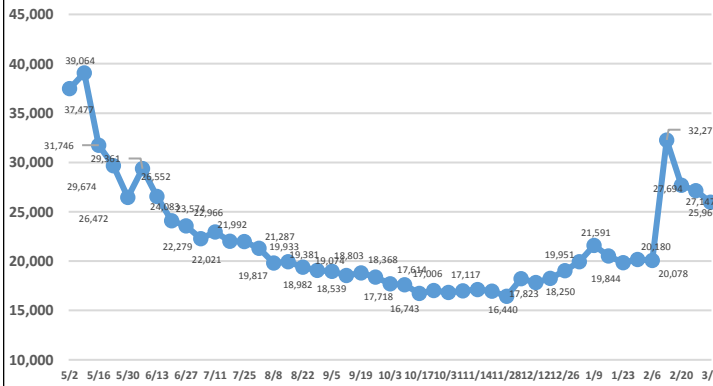
Characteristics of UI Initial Claimants Week ending March 6, 2021				
	Initial Claims	Percent		
<b>Total Claimants</b>	<b>12,028</b>	<b>100%</b>		
<b>Gender</b>	<b>12,028</b>	<b>100%</b>	<b>Age of Claimant</b>	<b>Initial Claims      Percent</b>
Male	6,521	54.2%	Under 25	2,118      17.6%
Female	5,507	45.8%	25-34	2,815      23.4%
			35-44	2,195      18.2%
<b>Race</b>	<b>12,028</b>	<b>100%</b>	45-54	2,136      17.8%
White	6,776	56.3%	55-64	1,983      16.5%
Black	2,393	19.9%	65 and over	781      6.5%
Asian	704	5.9%		
Other	136	1.1%	<b>Occupation</b>	<b>12,028      100%</b>
Chose Not To Answer	2,019	16.8%	Management	940      7.8%
<b>Ethnicity</b>	<b>12,028</b>	<b>100%</b>	Business and financial	366      3.0%
Hispanic	2,862	23.8%	Professional and related	1,507      12.5%
Non-Hispanic	7,966	66.2%	Services	2,283      19.0%
Chose Not To Answer	1,200	10.0%	Sales and related	1,310      10.9%
			Office and admin support	1,678      14.0%
<b>Educational Attainment</b>	<b>12,028</b>	<b>100%</b>	Farming, fishing and forestry	33      0.3%
Less Than High School	2,009	16.7%	Construction and extraction	1,186      9.9%
High School Graduate	4,672	38.8%	Installation, maint. and repair	387      3.2%
Some College Incl'd Assoc Deg	2,759	22.9%	Production	916      7.6%
Bachelors Degree and More	2,588	21.5%	Transp and material moving	1,406      11.7%
			Military	16      0.1%
Prepared by: Office of Research and Information, Division of Economic & Demographic Research, 3/8/2021				

Characteristics of UI Continued Claimants Week ending March 6, 2021				
	Claimants	Percent		
<b>Total Claimants</b>	<b>604,519</b>	<b>100%</b>		
<b>Gender</b>	<b>604,519</b>	<b>100%</b>	<b>Age of Claimant</b>	<b>Claimants      Percent</b>
Male	293,597	48.6%	Under 25	79,933      13.2%
Female	310,922	51.4%	25-34	130,097      21.5%
			35-44	114,458      18.9%
<b>Race</b>	<b>604,519</b>	<b>100%</b>	45-54	107,599      17.8%
White	329,596	54.5%	55-64	109,429      18.1%
Black	120,387	19.9%	65 and over	63,003      10.4%
Asian	41,490	6.9%		
Other	6,562	1.1%	<b>Occupation</b>	<b>604,519      100%</b>
Chose Not To Answer	106,484	17.6%	Management	42,406      7.0%
<b>Ethnicity</b>	<b>604,519</b>	<b>100%</b>	Business and financial	16,341      2.7%
Hispanic	148,802	24.6%	Professional and related	76,070      12.6%
Non-Hispanic	395,982	65.5%	Services	162,565      26.9%
Chose Not To Answer	59,735	9.9%	Sales and related	66,279      11.0%
			Office and admin support	77,693      12.9%
<b>Educational Attainment</b>	<b>604,519</b>	<b>100%</b>	Farming, fishing and forestry	1,643      0.3%
Less Than High School	97,636	16.2%	Construction and extraction	33,613      5.6%
High School Graduate	231,133	38.2%	Installation, maint. and repair	16,374      2.7%
Some College Incl'd Assoc Deg	145,334	24.0%	Production	36,752      6.1%
Bachelors Degree and More	130,416	21.6%	Transp and material moving	74,321      12.3%
			Military	462      0.1%
Prepared by: Office of Research and Information, Division of Economic & Demographic Research, 3/8/2021				

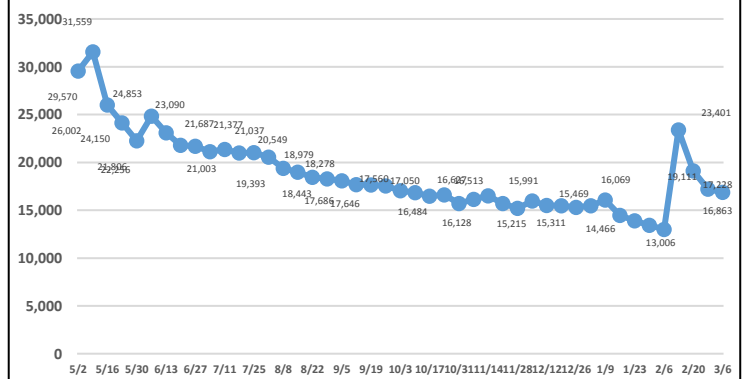
## Total Continued Claims



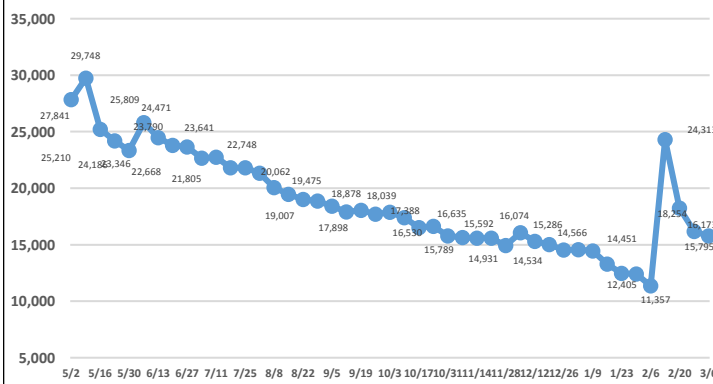
## Construction Continued Claims



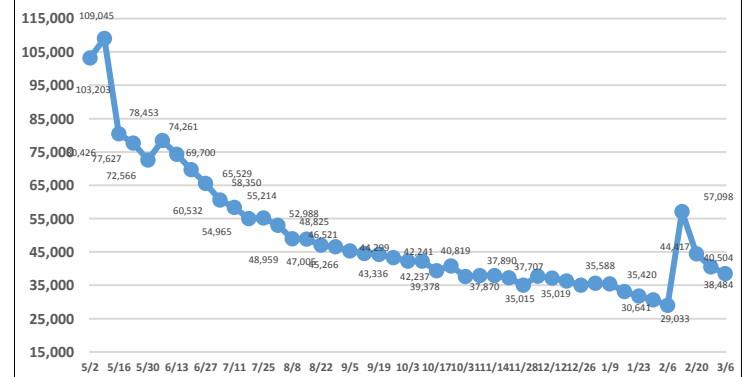
## Manufacturing Continued Claims



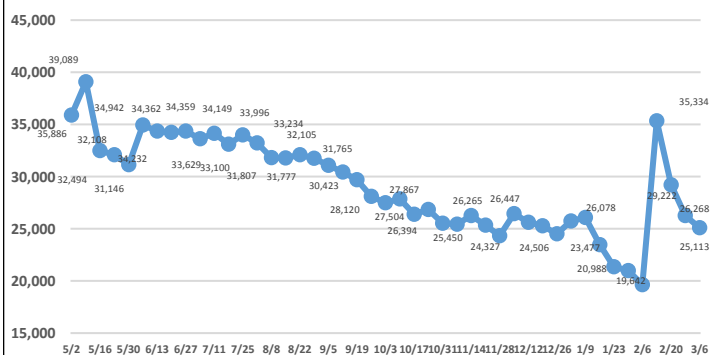
## Wholesale Trade Continued Claims



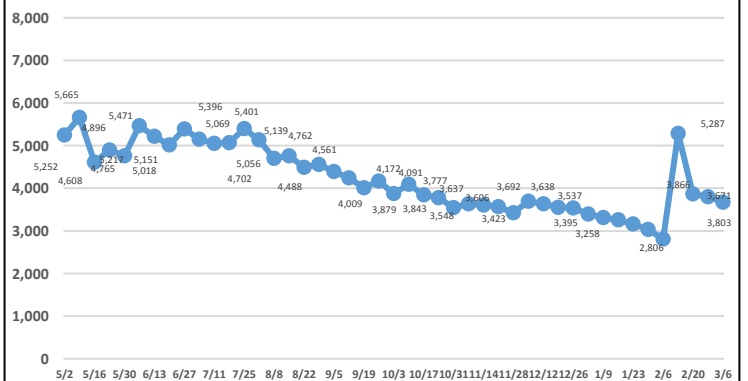
## Retail Trade Continued Claims



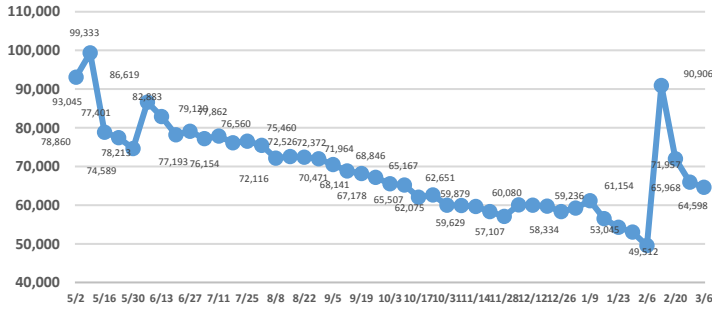
## Transportation/Warehousing Continued Claims



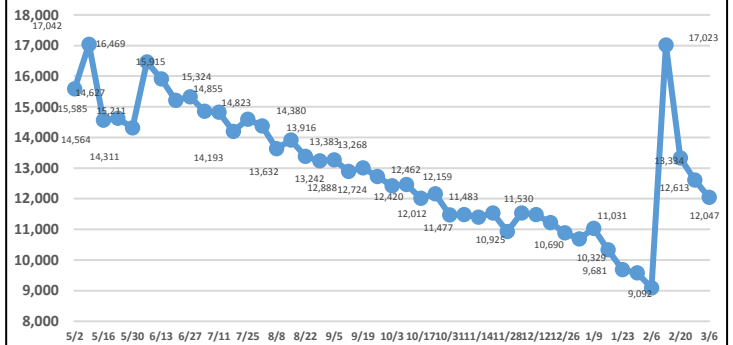
## Information Continued Claims



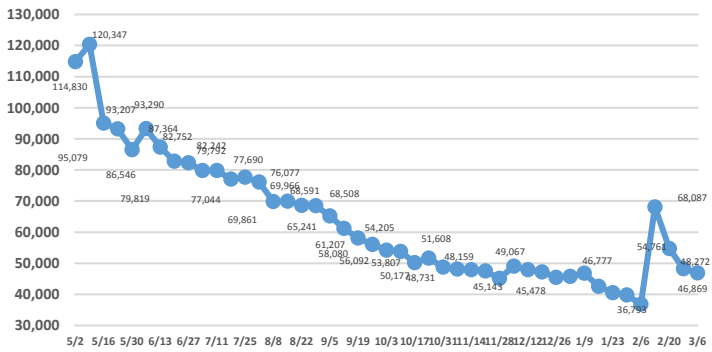
## Professional & Business Services Continued Claims



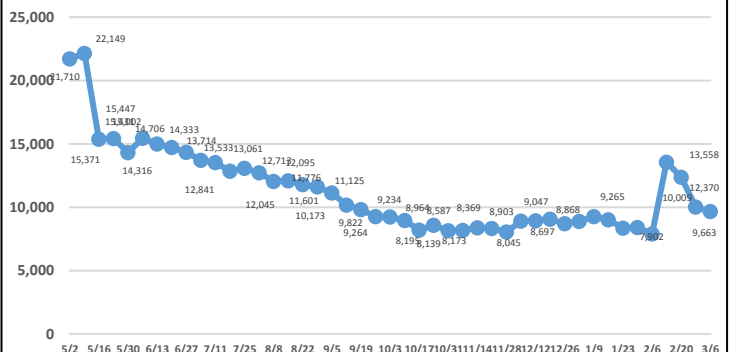
## Financial Activities Continued Claims



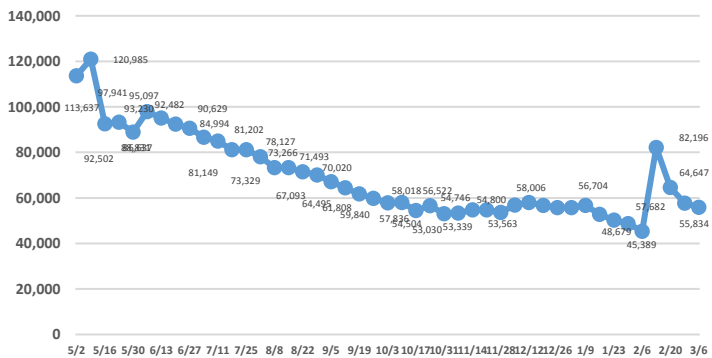
## Education & Health Services Continued Claims



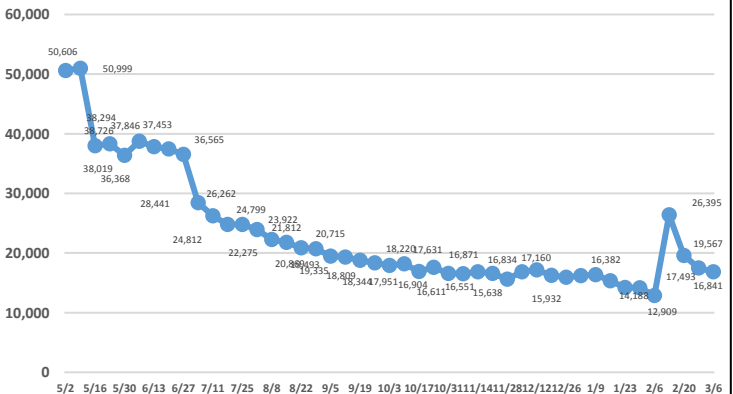
## Arts, Entertainment, Recreation Continued Claims



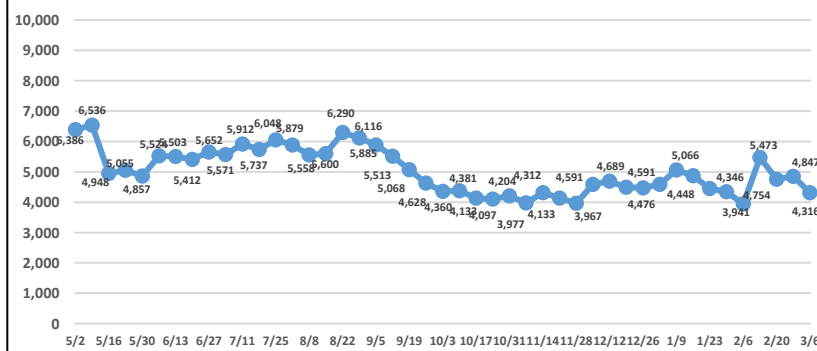
## Accommodations & Food Services Continued Claims



## Other Services Continued Claims



## Public Administration Continued Claims



Note: Industry data breakouts above do not include PUA claimants (self employed/independent contract workers).