

### New Jersey Initial Unemployment Claims by Industry - week ending 03/13/21

NAICS	CLAIMS	DESCRIPTION	Percentage of Weekly Claims
561	797	Administrative and support services	7.0%
238	532	Specialty trade contractors	4.7%
722	454	Food service and drinking places	4.0%
621	385	Ambulatory health care services (Dr. and Dentist offices)	3.4%
541	325	Professional, sci., and tech.services (lawyers, accts., engineers, archt, sci.research)	2.8%
611	316	Educational services	2.8%
452	214	General Merchandise Stores	1.9%
624	183	Social assistance	1.6%
493	165	Warehousing and storage	1.4%
721	142	Accommodations	1.2%
445	138	Food and beverage stores	1.2%
623	134	Nursing and residential care facilities	1.2%
423	134	Merchant Wholesalers, Durable Goods	1.2%
812	129	Personal and laundry services (Hair, nail salons, barbers, dry cleaners)	1.1%
237	125	Heavy and civil engineering construction	1.1%
424	125	Merchant Wholesalers, Nondurable Goods	1.1%
448	119	Clothing and clothing accessory stores	1.0%
484	110	Truck transportation	1.0%
492	106	Couriers and messengers	0.9%
236	104	Construction of buildings	0.9%

Prepared by: NJDOL, Office of Research and Information, Division of Economic & Demographic Research 03/15/21

### New Jersey Continued Unemployment Claims by Industry - 03/13/21

NAICS	CLAIMS	DESCRIPTION	Percentage of Total Claims	Percent of Industry Total Employment
561	38,384	Administrative and support services	6.3%	14.7%
722	36,546	Food service and drinking places	6.0%	14.2%
621	15,711	Ambulatory health care services (Dr. and Dentist offices)	2.6%	6.5%
238	13,982	Specialty trade contractors	2.3%	14.1%
541	13,704	Professional, sci., and tech.services (lawyers, accts., engineers, archt, sci.research)	2.2%	4.5%
721	12,424	Accommodations	2.0%	25.7%
611	11,310	Educational services	1.9%	2.9%
812	9,298	Personal and laundry services (Hair, nail salons, barbers, dry cleaners)	1.5%	14.6%
624	8,928	Social assistance	1.5%	7.9%
423	7,056	Merchant Wholesalers, Durable Goods	1.2%	6.5%
713	6,542	Amusement, gambling, recreation	1.1%	14.1%
485	6,534	Transit and ground passenger transportation	1.1%	21.4%
424	5,983	Merchant Wholesalers, Nondurable Goods	1.0%	6.6%
452	5,876	General Merchandise Stores	1.0%	8.5%
445	5,238	Food and beverage stores	0.9%	4.7%
448	5,075	Clothing and clothing accessory stores	0.8%	11.5%
493	4,868	Warehousing and storage	0.8%	7.7%
623	4,734	Nursing and residential care facilities	0.8%	4.6%
441	4,701	Motor vehicle and parts dealers	0.8%	9.6%
236	4,160	Construction of buildings	0.7%	11.6%

Prepared by: NJDOL, Office of Research and Information, Division of Economic & Demographic Research 03/15/21

Claimants by Company Size Class 1Q2020				
Initials Week Ending 03/13/21			Continued 03/13/21	
SIZE CLASS	Initial Claims	% of Total	Continued Claims	% of Total
Unknown	4,775	41.78%	310,972	51.04%
5 or less	690	6.04%	43,577	7.15%
6 to 10	353	3.09%	21,147	3.47%
11 to 25	759	6.64%	35,532	5.83%
26 to 50	619	5.42%	30,147	4.95%
51 to 100	637	5.57%	28,131	4.62%
101 to 500	1,420	12.42%	60,235	9.89%
Over 500	2,177	19.05%	79,534	13.05%
Prepared by: NJDOL, Office of Research and Information, Division of Economic & Demographic Research 03/15/21				

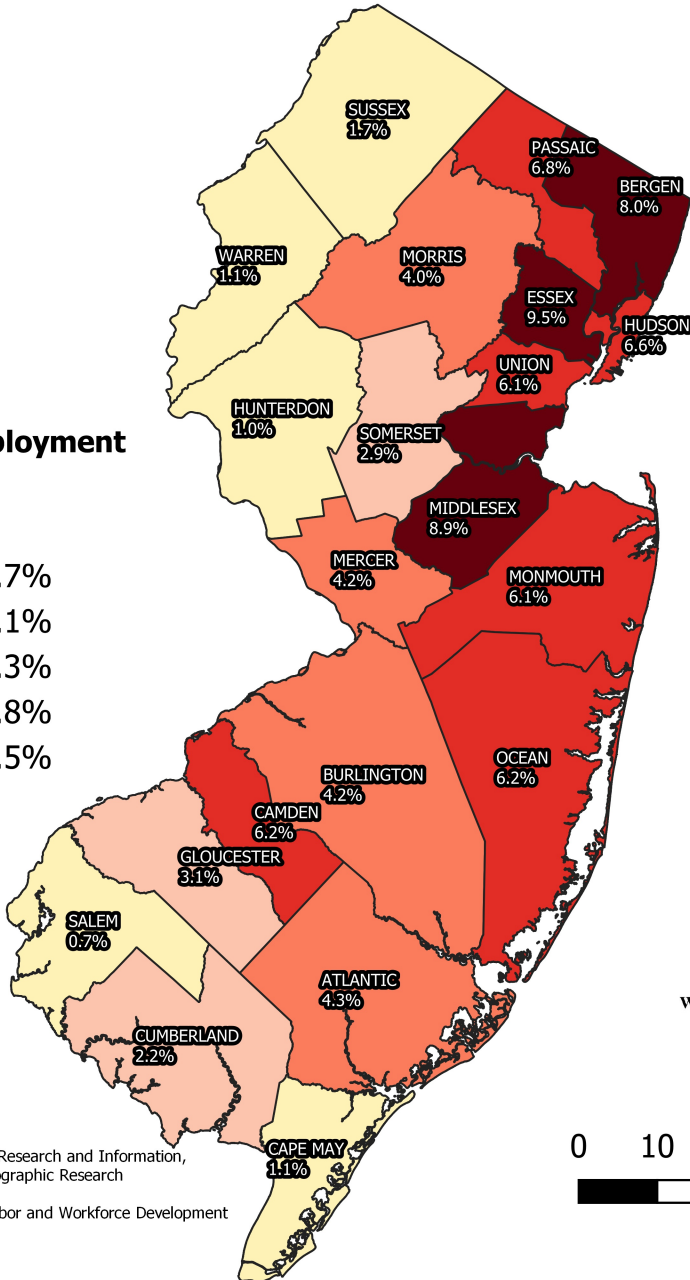
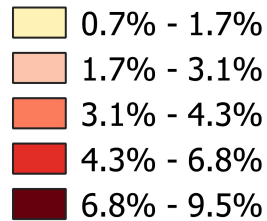
N. J. Initial Unemployment Claims by County week ending 3/13/2021		
County of Residence	Claims	Percent of Total
Atlantic	494	4.3%
Bergen	917	8.0%
Burlington	483	4.2%
Camden	714	6.2%
Cape May	129	1.1%
Cumberland	246	2.2%
Essex	1,085	9.5%
Gloucester	355	3.1%
Hudson	756	6.6%
Hunterdon	112	1.0%
Mercer	478	4.2%
Middlesex	1,020	8.9%
Monmouth	700	6.1%
Morris	460	4.0%
Ocean	704	6.2%
Passaic	777	6.8%
Salem	85	0.7%
Somerset	329	2.9%
Sussex	199	1.7%
Union	700	6.1%
Warren	127	1.1%
New Jersey Total	10,870	95.1%
Out-of-State Filers	560	4.9%
<b>Grand Total</b>	<b><u>11,430</u></b>	<b><u>100.0%</u></b>
Prepared by: Office of Research and Information, Division of Economic & Demographic Research 3/15/2021		

N. J. UI Continued Claimants by County week ending 3/13/21		
County of Residence	Claimants	Percent of Total
Atlantic	28,067	4.6%
Bergen	57,113	9.4%
Burlington	23,415	3.8%
Camden	35,386	5.8%
Cape May	8,410	1.4%
Cumberland	10,323	1.7%
Essex	61,201	10.0%
Gloucester	16,499	2.7%
Hudson	46,904	7.7%
Hunterdon	5,031	0.8%
Mercer	20,336	3.3%
Middlesex	51,625	8.5%
Monmouth	36,988	6.1%
Morris	23,645	3.9%
Ocean	34,559	5.7%
Passaic	47,481	7.8%
Salem	3,722	0.6%
Somerset	16,488	2.7%
Sussex	8,201	1.3%
Union	36,776	6.0%
Warren	5,537	0.9%
New Jersey Total	577,707	94.8%
Out-of-State Filers	31,568	5.2%
<b>Grand Total</b>	<b><u>609,275</u></b>	<b><u>100.0%</u></b>
Prepared by: Office of Research and Information, Division of Economic & Demographic Research 3/15/2021		

# N.J. Unemployment Claims

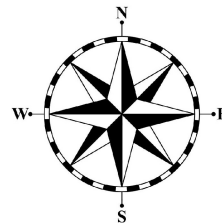
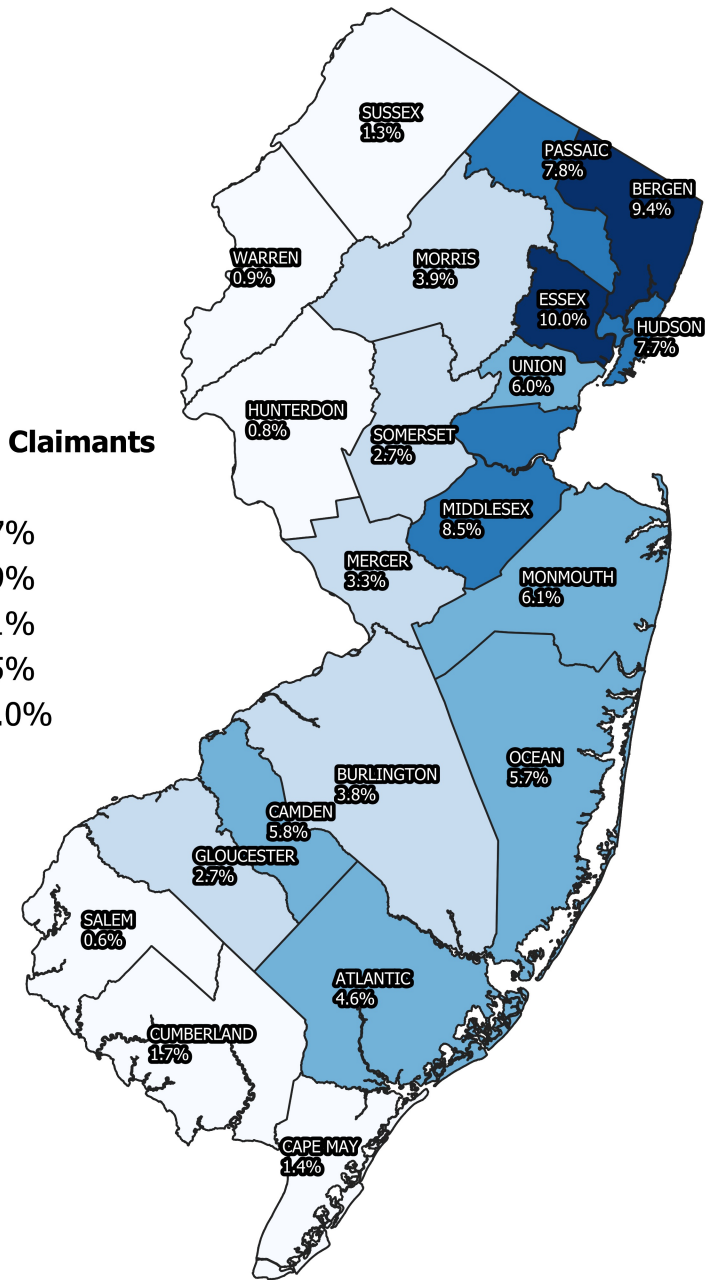
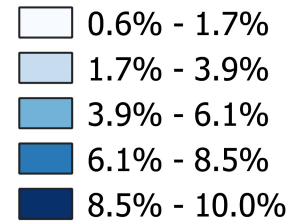
## N.J. Initial Unemployment Claims by County

### Initial Unemployment Claims 3/13/21



## N.J. UI Continued Claimants by County

### U.I. Continued Claimants 3/13/21

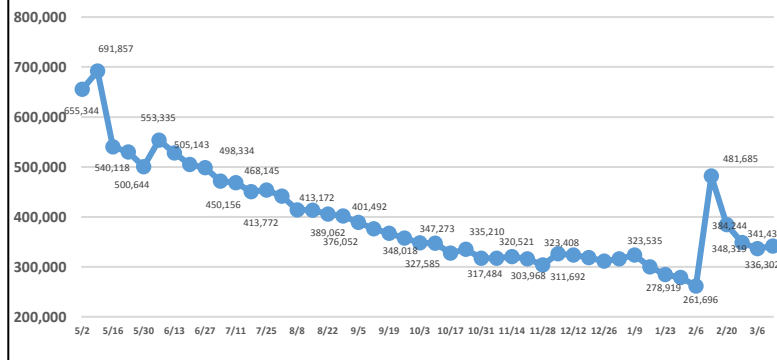


0 10 20 30 40 50 miles

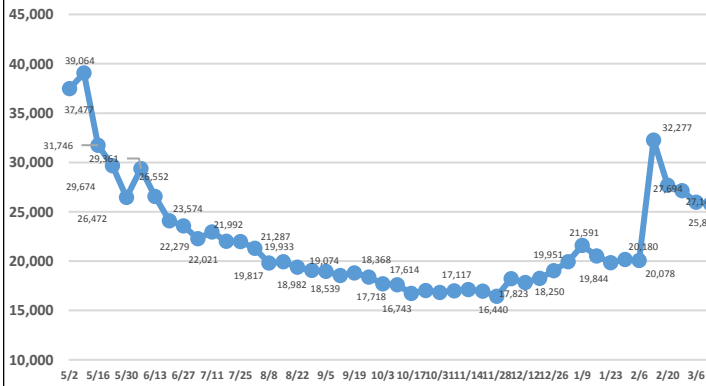
Characteristics of UI Initial Claimants Week ending March 13, 2021				
	Initial Claims	Percent		
<b>Total Claimants</b>	<b>11,430</b>	<b>100%</b>		
<b>Gender</b>	<b>11,430</b>	<b>100%</b>	<b>Age of Claimant</b>	<b>11,430</b>
Male	6,060	53.0%	Under 25	2,211
Female	5,370	47.0%	25-34	2,772
			35-44	1,980
<b>Race</b>	<b>11,430</b>	<b>100%</b>	45-54	1,999
White	6,241	54.6%	55-64	1,797
Black	2,388	20.9%	65 and over	671
Asian	672	5.9%		
Other	147	1.3%	<b>Occupation</b>	<b>11,430</b>
Chose Not To Answer	1,982	17.3%	Management	857
<b>Ethnicity</b>	<b>11,430</b>	<b>100%</b>	Business and financial	298
Hispanic	2,664	23.3%	Professional and related	1,532
Non-Hispanic	7,458	65.2%	Services	2,317
Chose Not To Answer	1,308	11.4%	Sales and related	1,191
<b>Educational Attainment</b>	<b>11,430</b>	<b>100%</b>	Office and admin support	1,672
Less Than High School	1,936	16.9%	Farming, fishing and forestry	24
High School Graduate	4,268	37.3%	Construction and extraction	1,007
Some College Incl'd Assoc Deg	2,815	24.6%	Installation, maint. and repair	357
Bachelors Degree and More	2,411	21.1%	Production	780
			Transp and material moving	1,368
			Military	27
Prepared by: Office of Research and Information, Division of Economic & Demographic Research, 3/15/2021				

Characteristics of UI Continued Claimants Week ending March 13, 2021				
	Claimants	Percent		
<b>Total Claimants</b>	<b>609,275</b>	<b>100%</b>		
<b>Gender</b>	<b>609,275</b>	<b>100%</b>	<b>Age of Claimant</b>	<b>609,275</b>
Male	295,701	48.5%	Under 25	81,306
Female	313,574	51.5%	25-34	131,180
			35-44	115,217
<b>Race</b>	<b>609,275</b>	<b>100%</b>	45-54	108,124
White	331,225	54.4%	55-64	110,163
Black	122,007	20.0%	65 and over	63,285
Asian	41,959	6.9%		
Other	6,637	1.1%	<b>Occupation</b>	<b>609,275</b>
Chose Not To Answer	107,447	17.6%	Management	42,679
<b>Ethnicity</b>	<b>609,275</b>	<b>100%</b>	Business and financial	16,502
Hispanic	150,335	24.7%	Professional and related	76,527
Non-Hispanic	398,874	65.5%	Services	163,759
Chose Not To Answer	60,066	9.9%	Sales and related	67,186
<b>Educational Attainment</b>	<b>609,275</b>	<b>100%</b>	Office and admin support	78,694
Less Than High School	98,762	16.2%	Farming, fishing and forestry	1,646
High School Graduate	232,937	38.2%	Construction and extraction	33,081
Some College Incl'd Assoc Deg	146,506	24.0%	Installation, maint. and repair	16,443
Bachelors Degree and More	131,070	21.5%	Production	37,445
			Transp and material moving	74,854
			Military	459
Prepared by: Office of Research and Information, Division of Economic & Demographic Research, 3/15/2021				

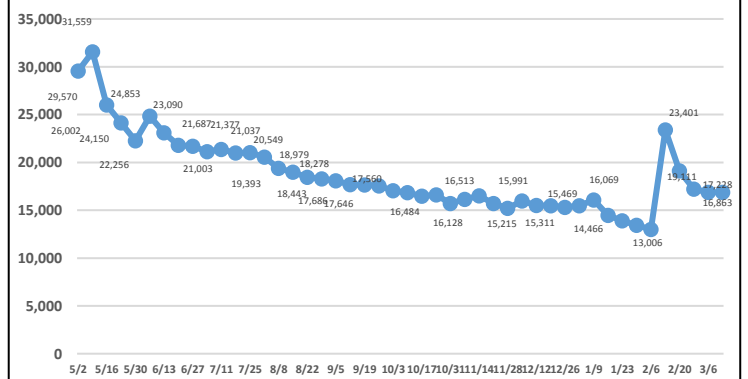
## Total Continued Claims



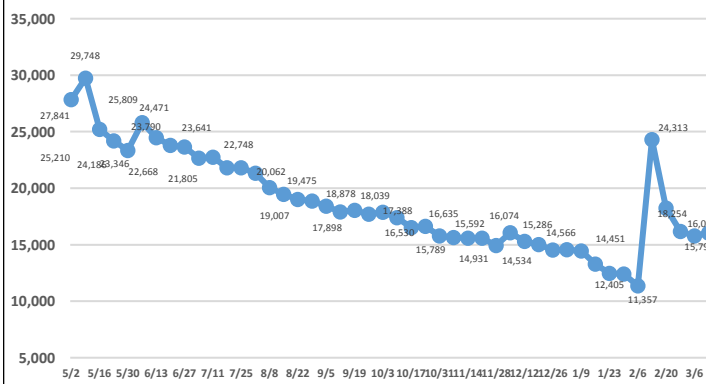
## Construction Continued Claims



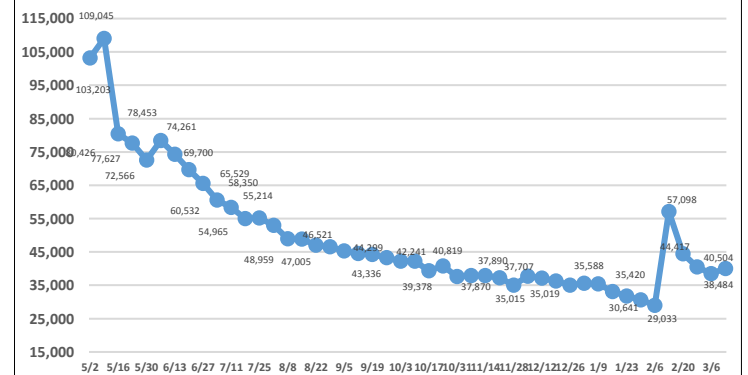
## Manufacturing Continued Claims



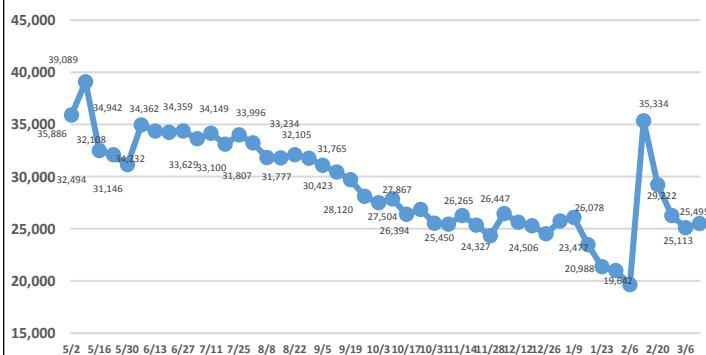
## Wholesale Trade Continued Claims



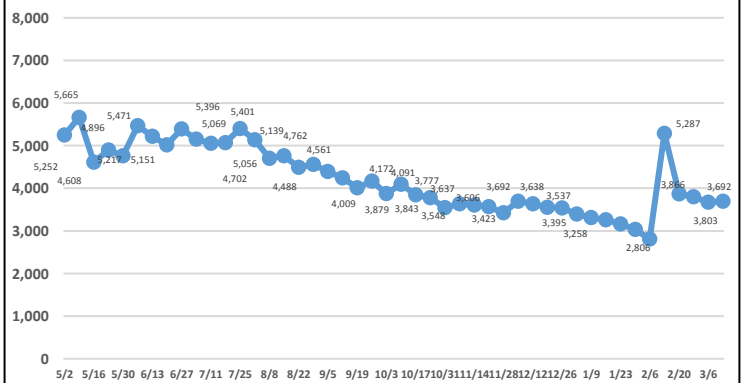
## Retail Trade Continued Claims



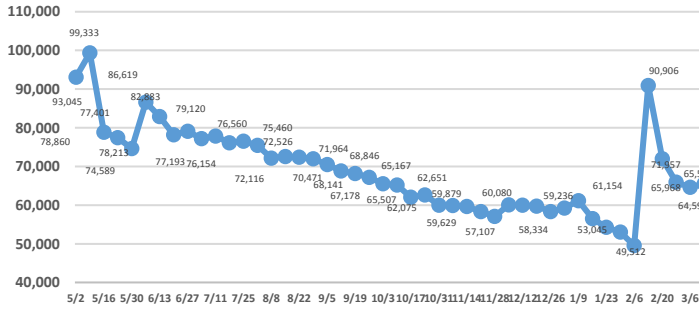
## Transportation/Warehousing Continued Claims



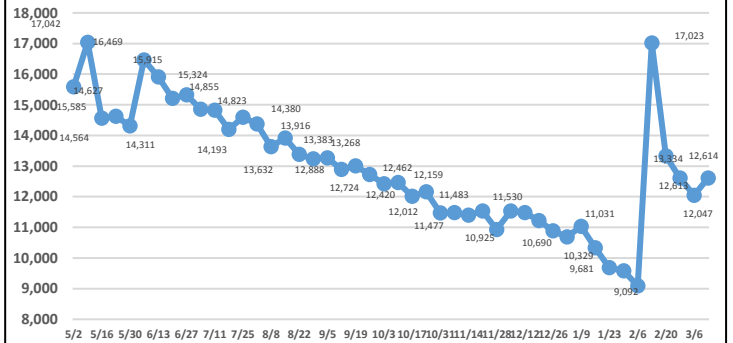
## Information Continued Claims



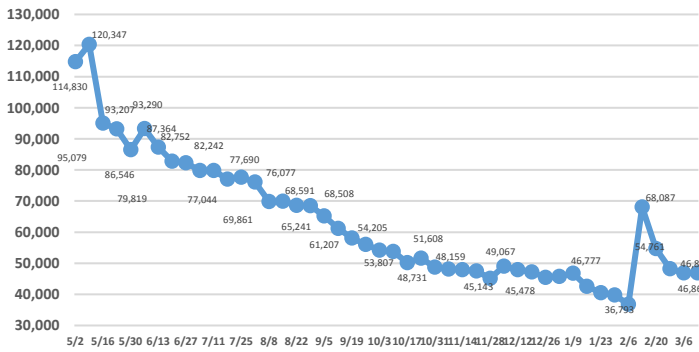
## Professional & Business Services Continued Claims



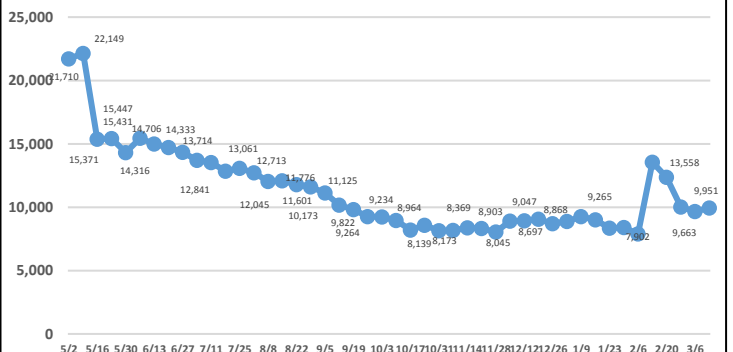
## Financial Activities Continued Claims



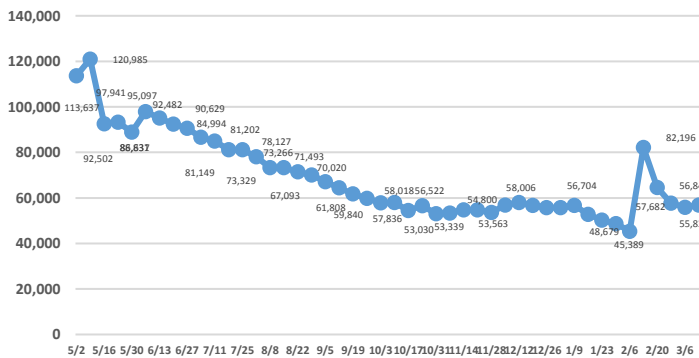
## Education & Health Services Continued Claims



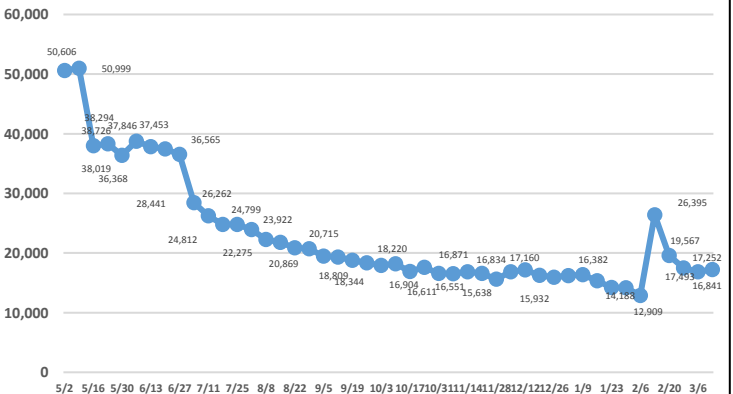
## Arts, Entertainment, Recreation Continued Claims



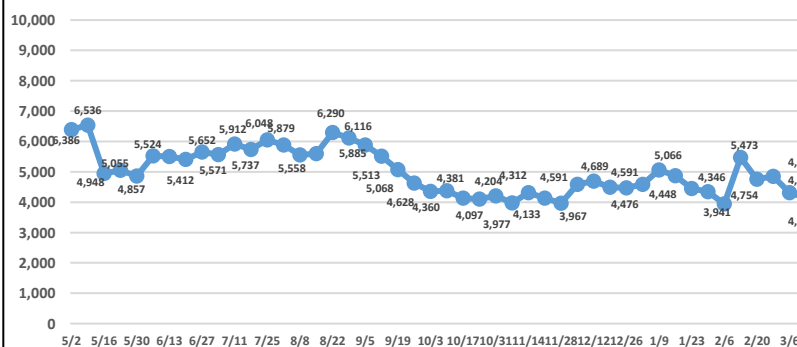
## Accommodations & Food Services Continued Claims



## Other Services Continued Claims



## Public Administration Continued Claims



Note: Industry data breakouts above do not include PUA claimants (self employed/independent contract workers).