

Camden County

Division of Economic and Demographic Research

Office of Research & Information

New Jersey Department of Labor and Workforce Development

February 2026

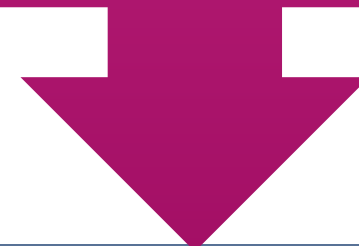


TABLE OF CONTENTS

Who Are We?	3
Purpose and Highlights	4
Demographic and Housing Characteristics	5
Economy	12
Job Postings	25
Takeaways	38
2025-2026 NJDOL Publications	42
Join Our List	43

**WHO ARE
WE?**

New Jersey Department of Labor
Office of Research and Information



Division of Economic and Demographic
Research

SDC

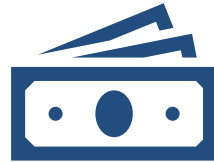
BLS

LMI

The purpose of this report is to highlight the key demographic and economic trends in the county



Camden County has a **lower median age and a lesser share of foreign-born residents** than New Jersey.



Camden County's real GDP ranks 11th among all New Jersey counties.



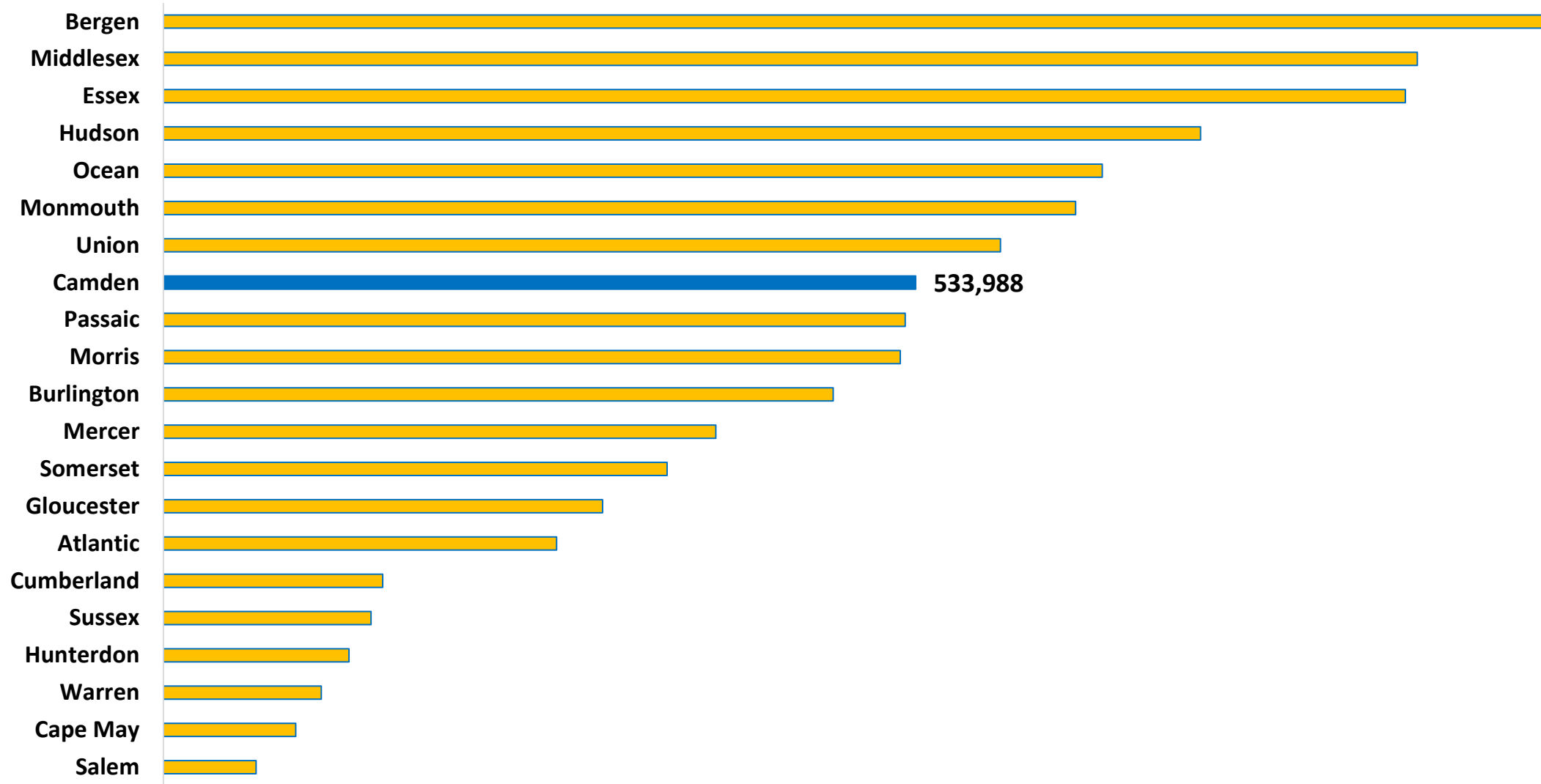
The **top** occupations in demand include Registered Nurses, Retail Salespersons, and First-Line Supervisors of Retail Sales Workers.



DEMOGRAPHIC AND HOUSING CHARACTERISTICS

Camden County's population was 533,988 in 2024.

Population Estimates by County in New Jersey, 2024



Camden County has a lower median age and a lesser share of foreign-born residents than New Jersey.

Demographic Characteristics

Indicator	Camden County	New Jersey
Median Age	38.7	40.1
% of Older Population (65+)	17.2%	18.0%
% of Language Other Than English Spoken at Home	22.8%	34.3%
% of Foreign-Born Population	11.9%	25.0%
% of Hispanic or Latino (of Any Race)	20.2%	23.5%

The share of Camden County residents with some college (no degree) is 1.9 percentage points above the state.

Educational Attainment (Population 25 Years and Older)

Indicator	Camden County	New Jersey
High School or Equivalent Degree	28.2%	24.7%
Some College, No Degree	16.4%	14.5%
Associate's Degree	6.6%	6.6%
Bachelor's Degree or Higher	38.8%	44.5%
High School Degree or Higher	90.0%	90.3%

Camden County has a lower median household income and a higher poverty rate compared to the state.

Income & Poverty

Indicator	Camden County	New Jersey
Median Household Income	\$92,666	\$104,294
% of Poverty	11.6%	9.2%

Note: Median Household Income in the Past 12 Months (in 2024 Inflation-Adjusted Dollars)

Camden County residents pay lower rent and have a higher homeownership rate compared to the state average.

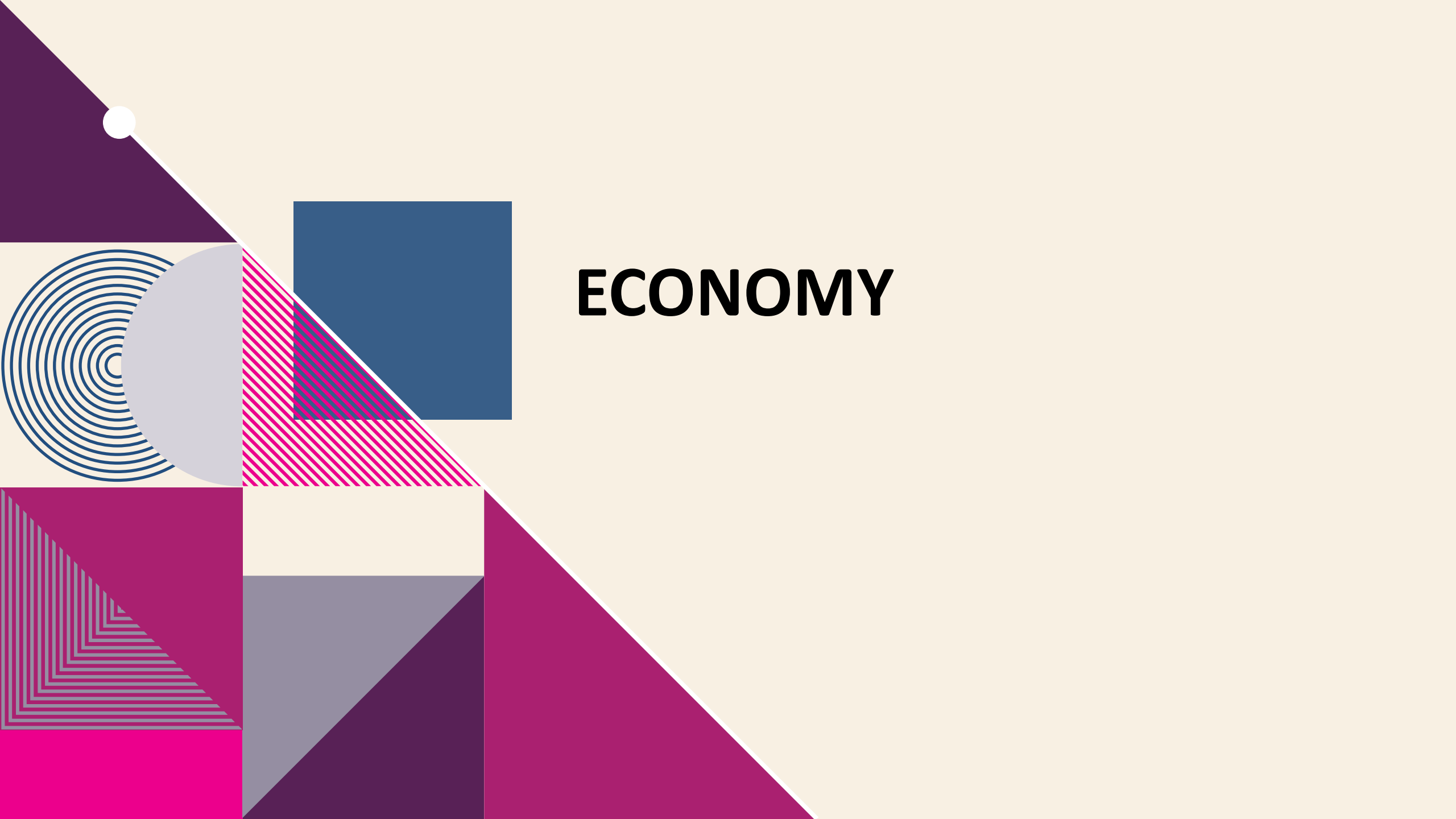
Housing Characteristics

Indicator	Camden County	New Jersey
Total Households	203,412	3,543,944
Median Gross Rent	\$1,433	\$1,800
Homeownership Rate	66.8%	63.9%
% of Housing Value of Owner Occupied (≥\$300,000)	58.6%	80.7%

Camden County residents have shorter commute times, and a lower percentage of remote workers compared to the state average.

Commuting Characteristics

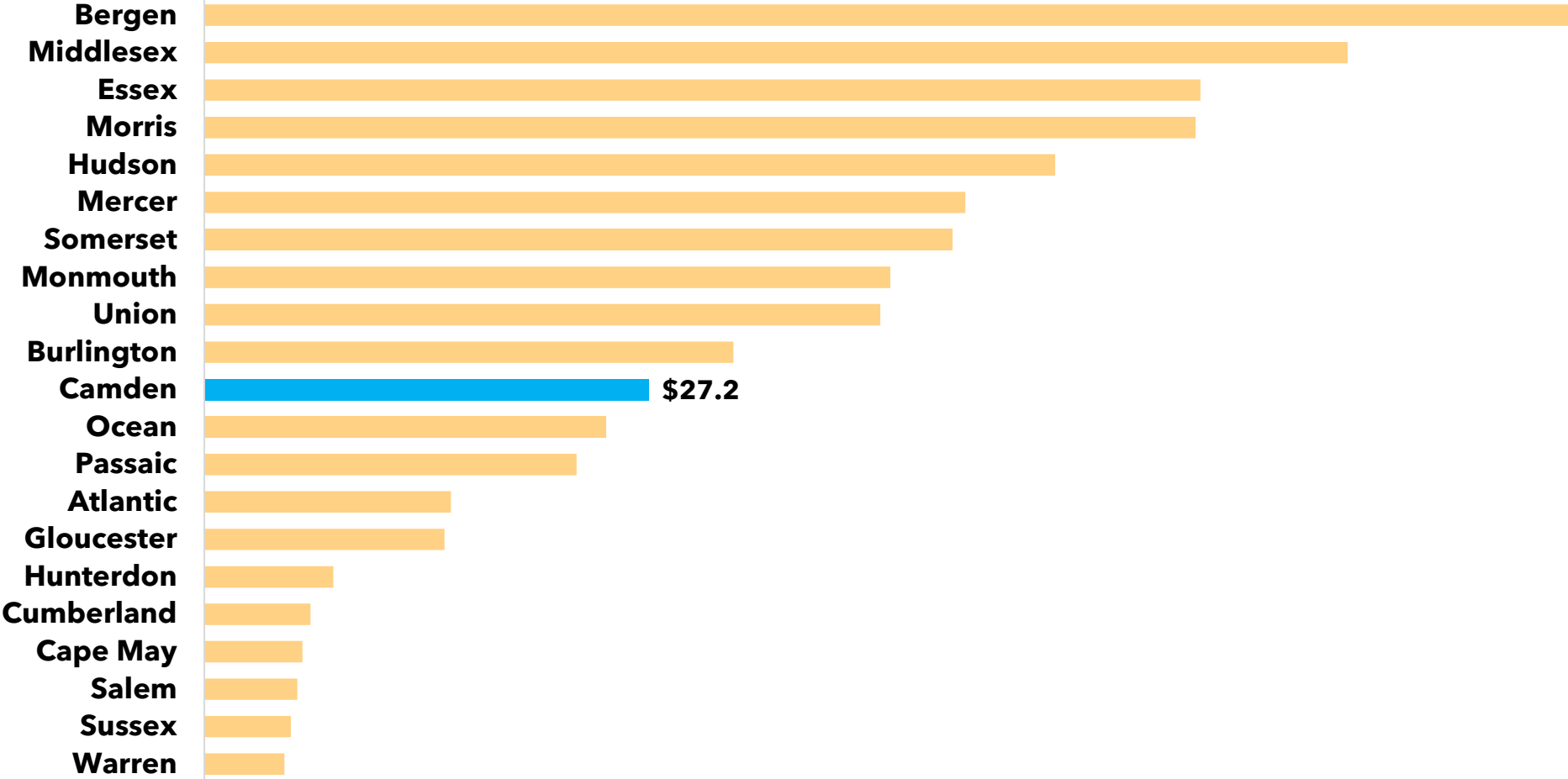
Indicator	Camden County	New Jersey
Average Travel Time to Work (in Minutes)	27.9	31.9
% of Public Transportation	5.1%	9.7%
% of Working From Home	12.6%	13.5%



ECONOMY

In 2024, Camden County's real GDP was \$27.2 billion, ranking 11th among all New Jersey counties.

**Real Gross Domestic Product (GDP) by County in New Jersey, 2024
(\$, in billions)**



Source: U.S. Bureau of Economic Analysis, "[CAGDP1 County and MSA gross domestic product \(GDP\) summary](#)" (accessed Wednesday, April 2, 2025).



Establishments and Employment

Camden County

Source: Quarterly Census of Employment and Wages (QCEW) program, 2018 and 2024 Annual Averages

The QCEW program produces quarterly and annual data on the number of establishments, total employment, and wages for workers covered by New Jersey unemployment insurance (UI) laws, as well as federal employees under the Unemployment Compensation for Federal Employees (UCFE) program. This data is published at various geographical and industry levels.

26.6% of Camden County establishments are in health care and social assistance.

Camden County Establishments, Ranked by Percent of the Total Establishments Total Private Ownership

Industry	Total Number of Establishments	Total Number of Employees	% of Total Establishments
Health Care and Social Assistance	3,665	47,287	26.6%
Retail Trade	1,490	23,799	10.8%
Professional and Technical Services	1,341	10,488	9.7%
Other Services, exc. Public Administration	1,130	6,737	8.2%
Accommodation and Food Services	1,052	16,078	7.6%
Construction	972	8,106	7.1%
Administrative and Waste Services	770	14,663	5.6%
Wholesale Trade	577	7,770	4.2%
Finance and Insurance	491	4,289	3.6%
Manufacturing	435	12,654	3.2%
Real Estate and Rental and Leasing	391	2,917	2.8%
Transportation and Warehousing	260	8,352	1.9%
Educational Services	169	3,542	1.2%
Information	144	1,127	1.0%
Management of Companies and Enterprises	65	4,309	0.5%
Utilities	17	432	0.1%
Agriculture, Forestry, Fishing and Hunting	16	314	0.1%

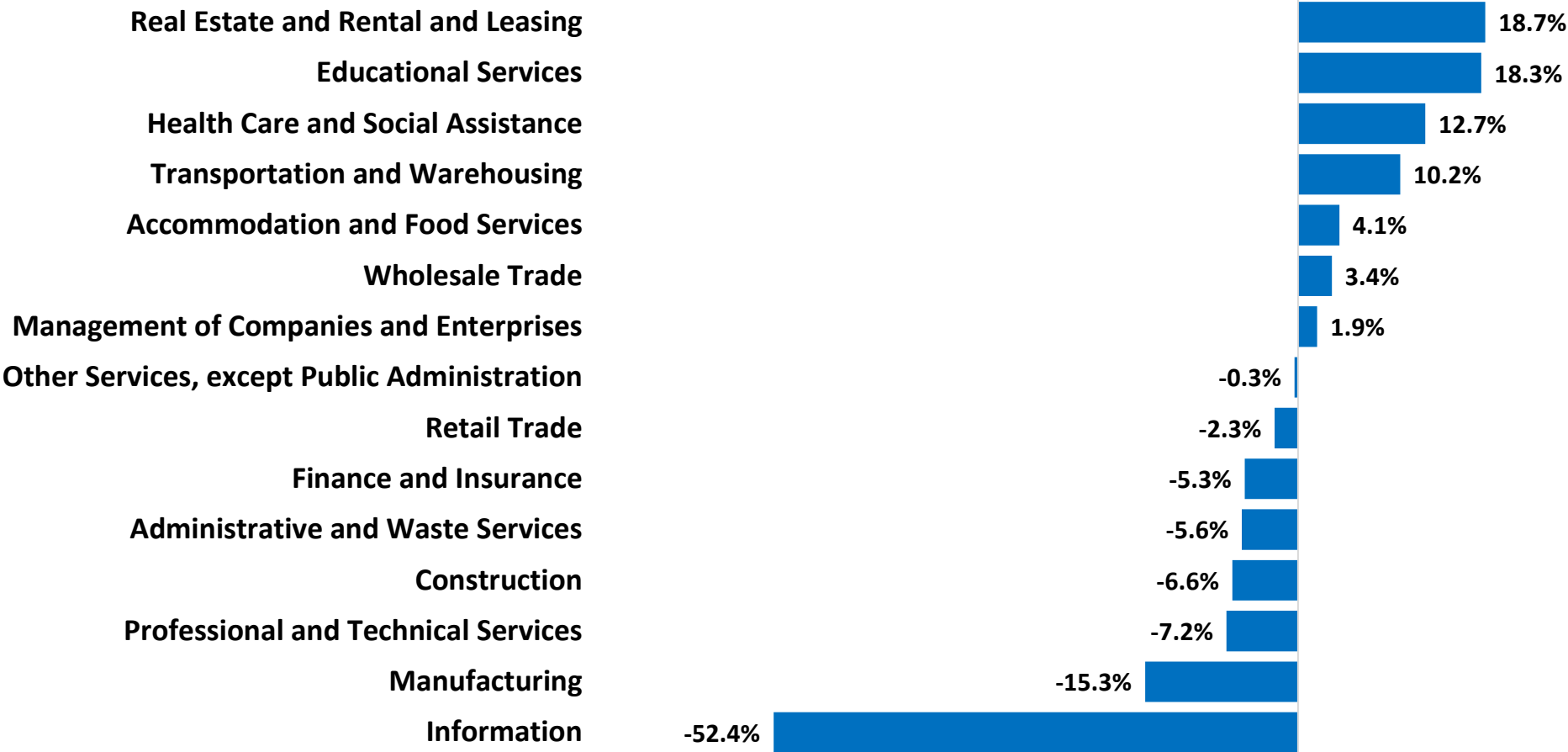
In Camden County, health care and social assistance has a higher employment share compared to state averages.

Employment by Private Industries Camden County vs. New Jersey, 2024

Industry	Camden County		New Jersey		Difference between
	Employment	% of Total	Employment	% of Total	
Construction	8,106	4.6%	164,014	4.5%	0.1%
Manufacturing	12,654	7.1%	253,054	6.9%	0.2%
Wholesale Trade	7,770	4.4%	213,549	5.8%	-1.4%
Retail Trade	23,799	13.4%	427,521	11.6%	1.8%
Transportation and Warehousing	8,352	4.7%	233,943	6.4%	-1.7%
Information	1,127	0.6%	76,199	2.1%	-1.4%
Finance and Insurance	4,289	2.4%	189,987	5.2%	-2.8%
Real Estate and Rental and Leasing	2,917	1.6%	63,263	1.7%	-0.1%
Professional and Technical Services	10,488	5.9%	336,105	9.1%	-3.2%
Management of Companies and Enterprises	4,309	2.4%	82,588	2.2%	0.2%
Administrative and Waste Services	14,663	8.2%	286,750	7.8%	0.5%
Educational Services	3,542	2.0%	90,018	2.4%	-0.5%
Health Care and Social Assistance	47,287	26.6%	656,356	17.8%	8.8%
Accommodation and Food Services	16,078	9.0%	328,905	8.9%	0.1%
Other Services, except Public Administration	6,737	3.8%	144,086	3.9%	-0.1%

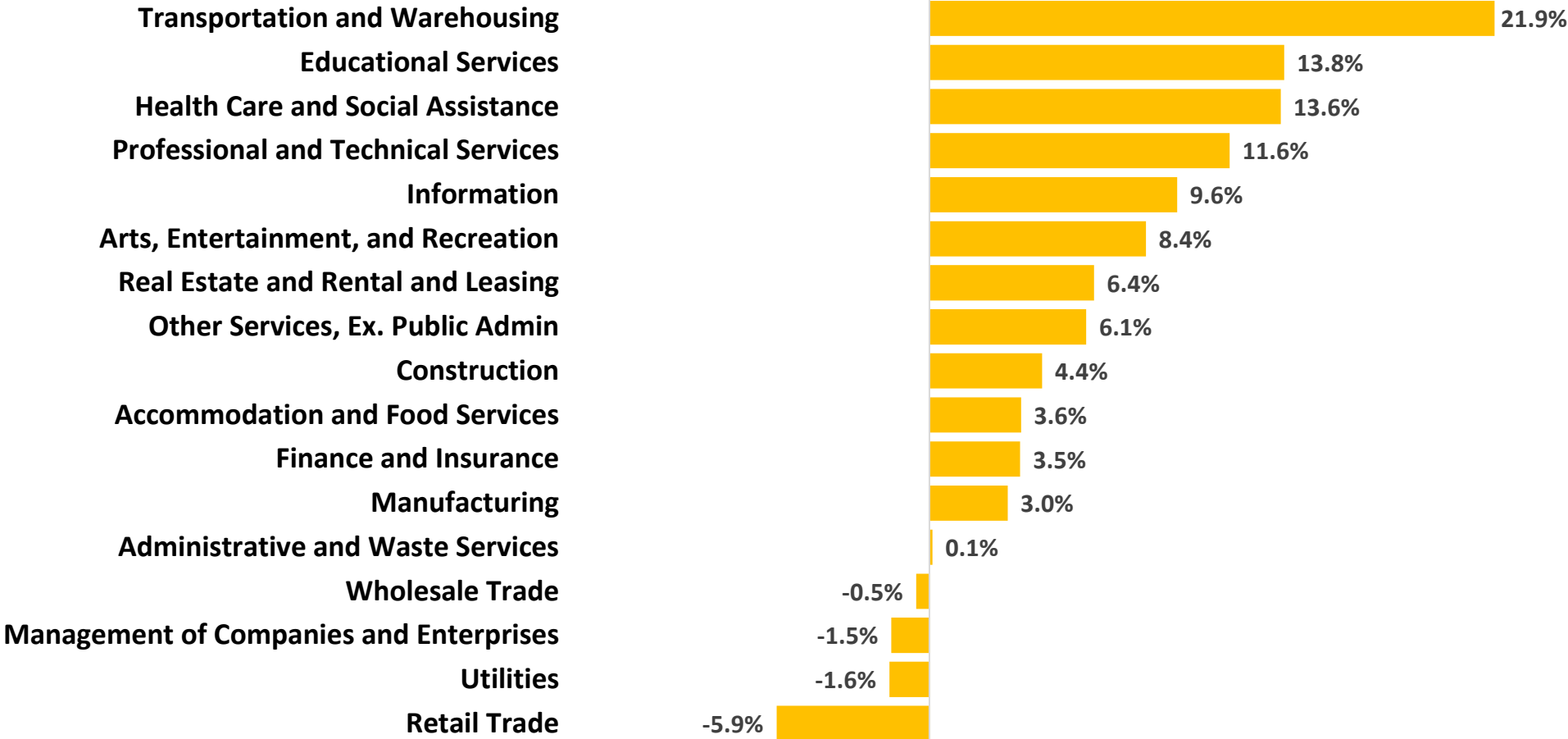
Between 2018 and 2024, the real estate and rental and leasing sector recorded the largest percentage increase in employment in Camden County, rising by 18.7%.

Percent Change in Employment by Industry
Camden County, 2018-2024 (ranked by percentage change in employment)



Transportation and warehousing saw strong growth in New Jersey, increasing by 21.9% between 2018 and 2024.

Percent Change in Employment by Industry
New Jersey, 2018-2024 (ranked by percentage change in employment)





Unemployment Trend

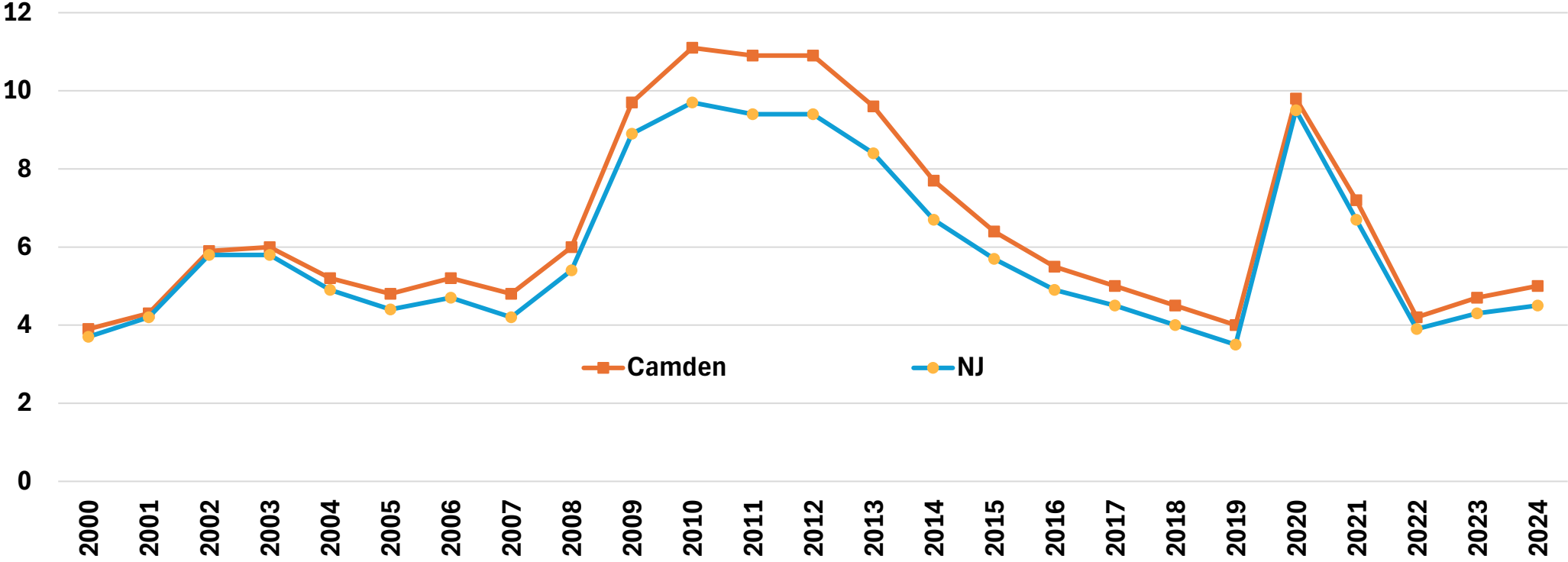
Camden County vs. New Jersey

Source: Local Area Unemployment Statistics (LAUS), 2024

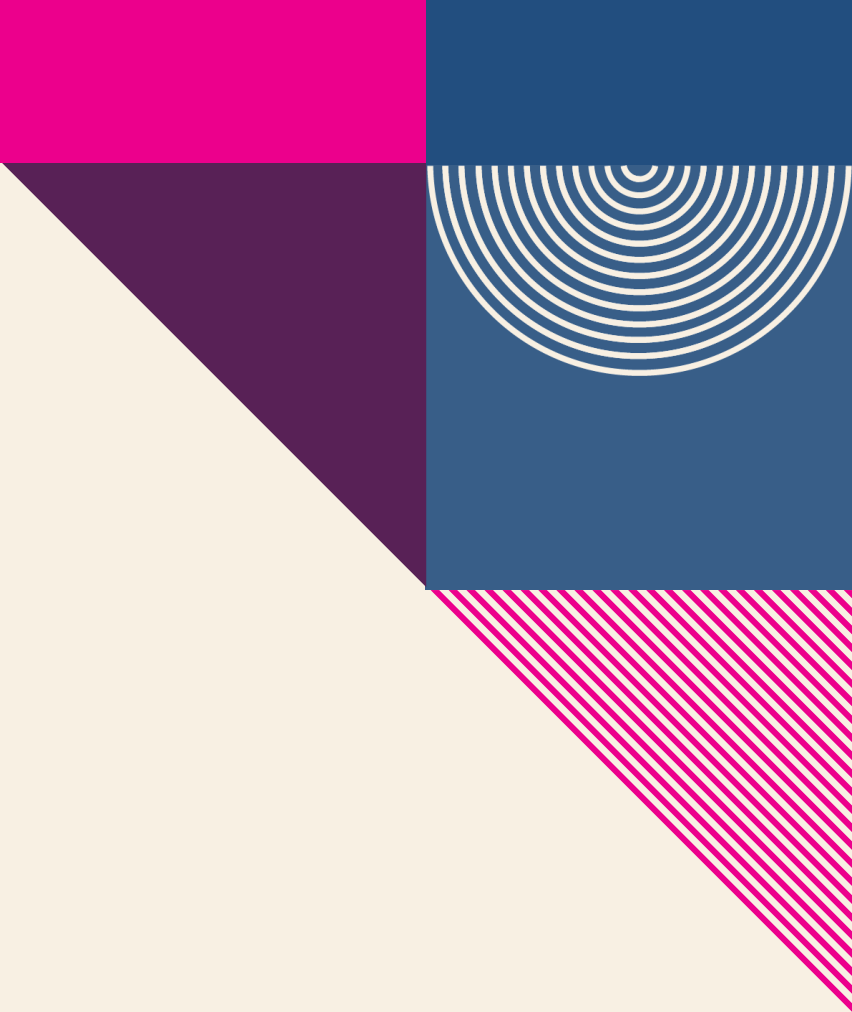
The Local Area Unemployment Statistics (LAUS) program produces monthly and annual employment, unemployment, and labor force data for Census regions and divisions, States, counties, metropolitan areas, and many cities, by place of residence.

The unemployment rate in Camden County follows state trends but is slightly above the New Jersey average.

Unemployment Rate Camden County vs. New Jersey, 2000-2024



Source: ORI-EDR, Local Area Unemployment Statistics (LAUS) program, Annual Averages 2000-2024



Occupational Employment and Wages

Camden County vs. New Jersey

Source: 2024 Occupational Employment and Wage Statistics' Estimates (OEWS), Division of Economic and Demographic Research, June 2025

The wage data published on this page are made possible due to thousands of New Jersey employers who participated in the Occupational Employment and Wage Statistics (OEWS) Survey over the past three years. The data collected in the OEWS Survey provides valuable input for wage comparisons and for identifying trends in emerging or declining occupations—precisely the kind of information needed by both employers, as well as those who are choosing or changing careers.

23.1% of Camden County’s total employment is concentrated in the top 10 occupations.

**Top 10 Occupations, Ranked by Employment
Camden County, 2024**

Occupation	Employment	% of Total Employment	Median Hourly Wage
Home Health and Personal Care Aides	7,260	3.4%	\$16.86
Registered Nurses	6,650	3.2%	\$47.99
Laborers and Freight, Stock, and Material Movers, Hand	5,830	2.8%	\$18.66
Fast Food and Counter Workers	5,540	2.6%	\$15.13
Cashiers	5,510	2.6%	\$15.13
Retail Salespersons	4,870	2.3%	\$16.25
Stockers and Order Fillers	3,530	1.7%	\$17.22
Office Clerks, General	3,320	1.6%	\$21.87
Secretaries and Administrative Assistants	3,150	1.5%	\$22.87
Janitors and Cleaners, Except Maids and Housekeeping Cleaners	3,050	1.4%	\$17.03
Top 10 Occupations, Total	48,710	23.1%	
All Occupations, Total	210,510	100.0%	\$23.50

Note: OEWS collects the data for 2024.

In New Jersey, the top 10 occupations account for 20.1% of total employment.

Top 10 Occupations, Ranked by Employment New Jersey, 2024

Occupation	Employment	% of Total Employment	Median Hourly Wage
Home Health and Personal Care Aides	105,460	2.5%	\$17.83
Laborers and Freight, Stock, and Material Movers	101,720	2.4%	\$18.78
Registered Nurses	95,150	2.2%	\$49.39
Cashiers	93,270	2.2%	\$15.96
Retail Salespersons	87,760	2.1%	\$17.13
Fast Food and Counter Workers	86,980	2.0%	\$16.01
Packers and Packagers, Hand	76,060	1.8%	\$20.56
Office Clerks, General	71,140	1.7%	\$23.07
Stockers and Order Fillers	70,780	1.7%	\$17.69
Janitors and Cleaners	67,590	1.6%	\$17.94
Top 10 Occupations, Total	855,910	20.1%	
All Occupations, Total	4,250,430	100.0%	\$27.51

Note: OEWS collects the data for 2024.

Between 2022 and 2032 in Camden County, healthcare support occupations are projected to see the largest growth (+2,200).

**Actual and Projected Employment by Occupation Group, Camden County
Top 10 Occupational Groups Ranked by 2032 Employment Projections**

Occupational Group	2022 Actual	2032 Projected	Net Change	Percent Change
Office and Administrative Support	29,500	27,850	-1,650	-5.6%
Transportation and Material Moving	22,700	24,400	1,700	7.5%
Sales and Related	20,300	19,750	-550	-2.7%
Healthcare Practitioners and Technical	17,050	18,850	1,800	10.6%
Educational Instruction and Library	16,750	17,250	500	3.0%
Management	15,350	16,200	850	5.5%
Healthcare Support	13,150	15,350	2,200	16.7%
Food Preparation and Serving Related	14,700	15,050	350	2.4%
Business and Financial	12,000	12,250	250	2.1%
Production	10,050	10,050	0	0.0%



JOB POSTINGS



Job Postings

Camden County vs. New Jersey

Source: Lightcast

Lightcast collect raw data on postings from more than 160,000 online sources, then synthesize and interpret those findings to provide meaningful insight in near real time. Job posting analytics can identify supply and demand for workers, skills, and jobs all over the world, as well as important contextual details like compensation trends.

Limitations: One job posting does not necessarily equal one actual job opening. Some companies may post jobs to signal growth to investors or advertise positions in multiple states. Additionally, a decline in job postings doesn't always indicate reduced demand; it could simply mean that companies have already filled their positions and are no longer actively recruiting. We treat this data as directional, offering insights into employer demand rather than exact measurements.



Top 5 Hiring Companies Camden County, 2024

- **Cooper University Health Care**
- **Virtua Health**
- **Thomas Jefferson Health**
- **Haven Behavioral Health Care**
- **BAYADA Home Health Care**



Top 5 Occupations Camden County, 2024

- Registered Nurses
- Retail Salespersons
- First-Line Supervisors of Retail Sales Workers
- Home Health and Personal Care Aides
- Heavy and Tractor-Trailer Truck Drivers



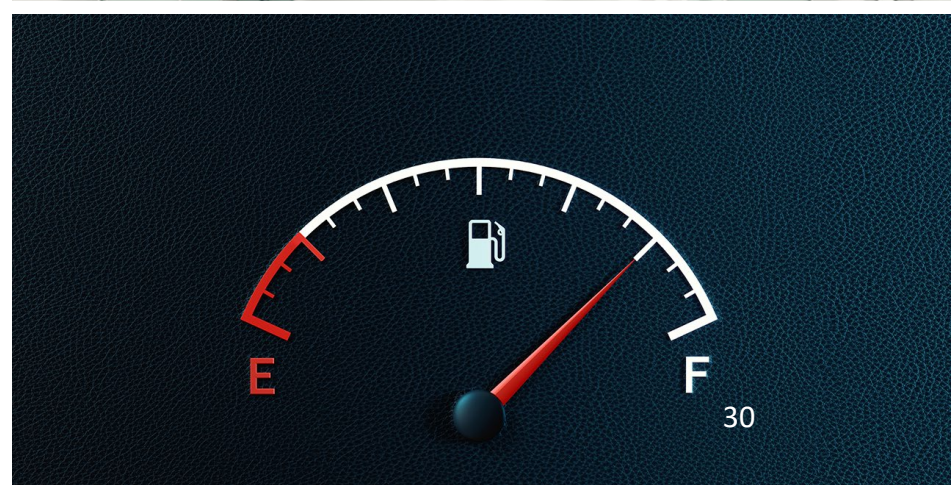
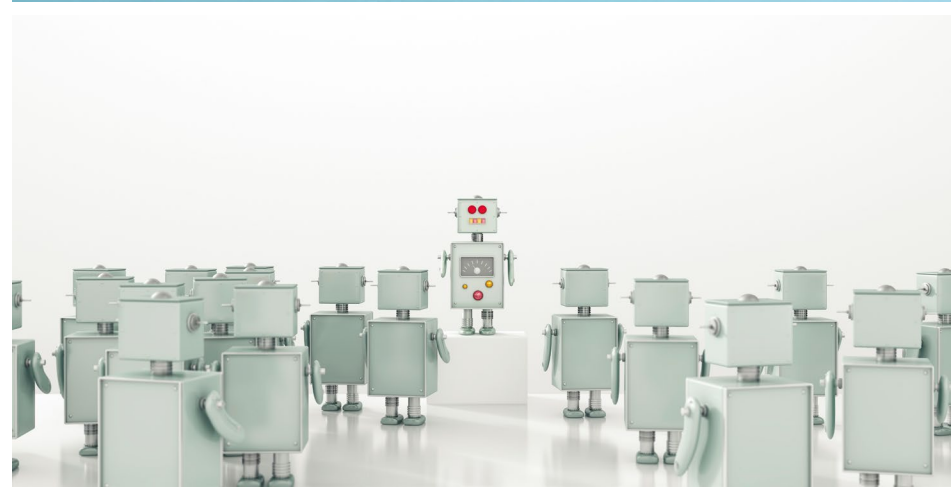


Top 5 Specialized Skills Camden County, 2024

- **Nursing**
- **Merchandising**
- **Marketing**
- **Auditing**
- **Project Management**

Top 5 Software Skills

- Microsoft Office (e.g., Excel, and PowerPoint)
- Programming Language (e.g., SQL, Python, and R)
- Salesforce
- Inventory Management
- Dashboard

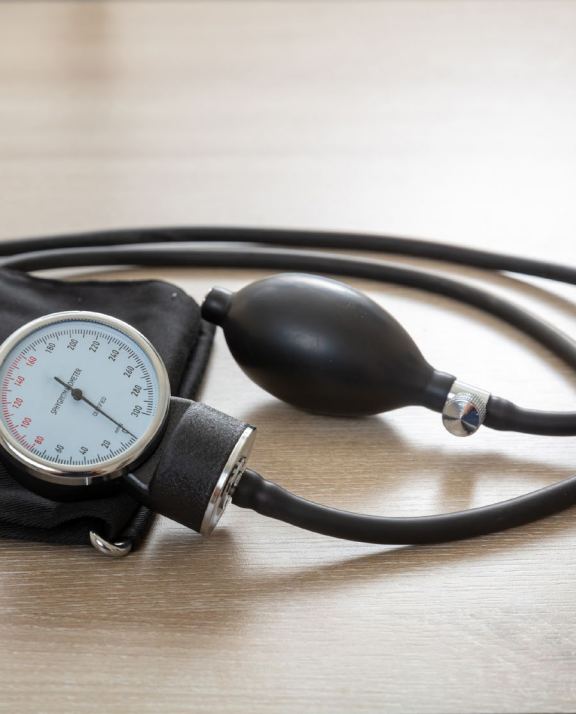




Top 5 Soft Skills Camden County, 2024

- **Communication**
- **Customer Service**
- **Management**
- **Sales**
- **Operations**





Top 5 Certificates

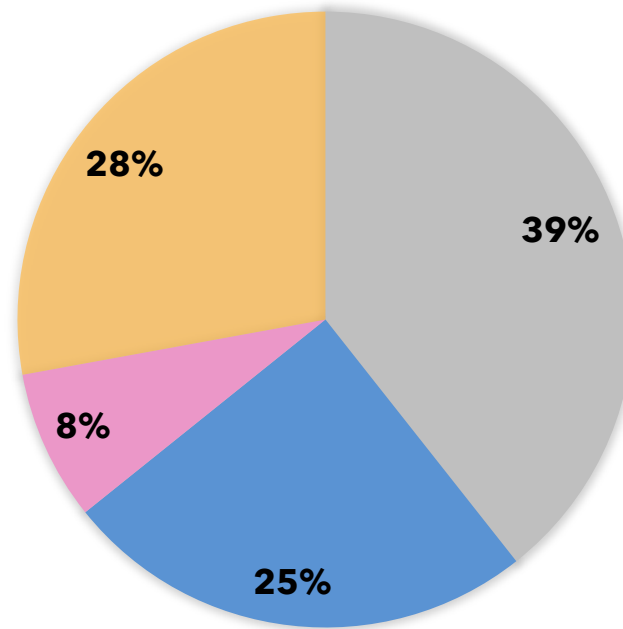
- **Valid Driver's License**
- **Registered Nurse (RN)**
- **Basic Life Support (BLS) Certification**
- **Cardiopulmonary Resuscitation (CPR) Certification**
- **Licensed Practical Nurse (LPN)**



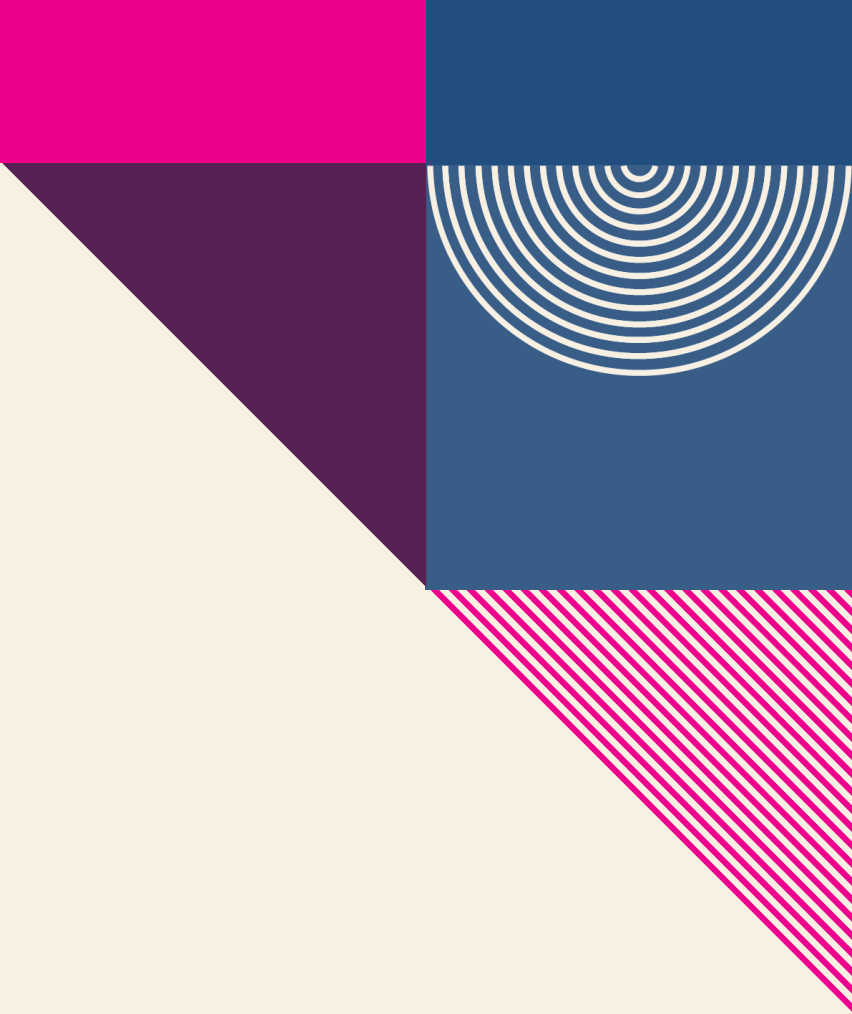
28 percent of job postings in Camden County require a bachelor's degree or higher.

Job Postings by Educational Attainment Camden County, 2024

■ No education listed ■ High school or GED ■ Associate's degree ■ Bachelor's degree or higher



Note: Bachelor's degree or higher includes Bachelor's Degree, Master, Ph.D. or Professional Degree. While 39% of job postings did not specify educational attainment, this does not necessarily mean there are no requirements for it.



AI-related Job Postings

Camden County vs. New Jersey

Source: Lightcast

To identify AI-related job postings, ORI-EDR compiled a curated list of 130 specific terms. A job listing is deemed AI-related if any of these terms appear in the skills section. A job listing is classified as AI-related if any of these terms are present in the skills section. This includes, but is not limited to, terms such as "AI/ML Inference," "Conversational AI," "Machine Learning Algorithms," "Supervised Learning," and "Deep Learning."

Limitations: One job posting does not necessarily equal one actual job opening. Some companies may post jobs to signal growth to investors or advertise positions in multiple states. Additionally, a decline in job postings doesn't always indicate reduced demand; it could simply mean that companies have already filled their positions and are no longer actively recruiting. We treat this data as directional, offering insights into employer demand rather than exact measurements.

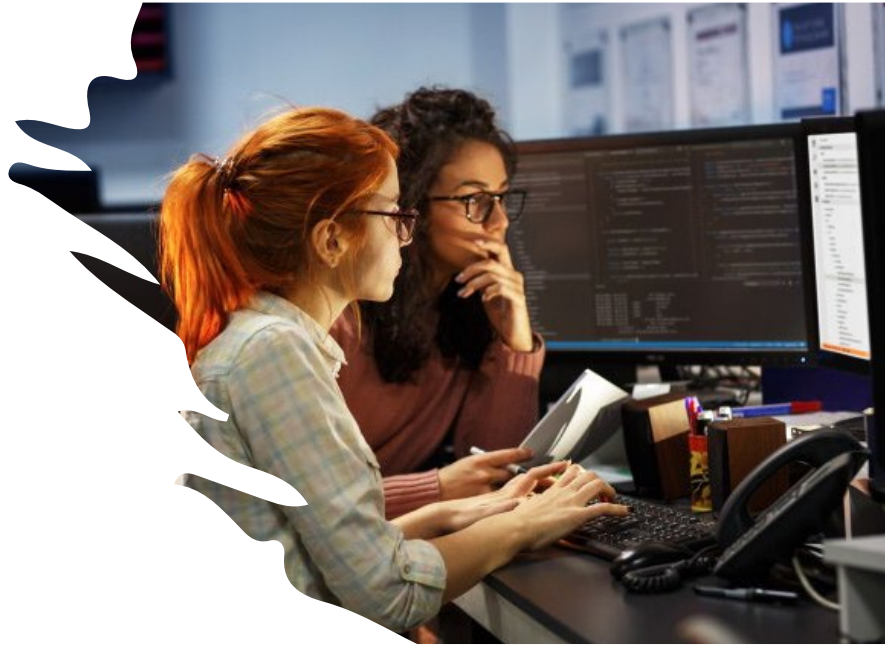
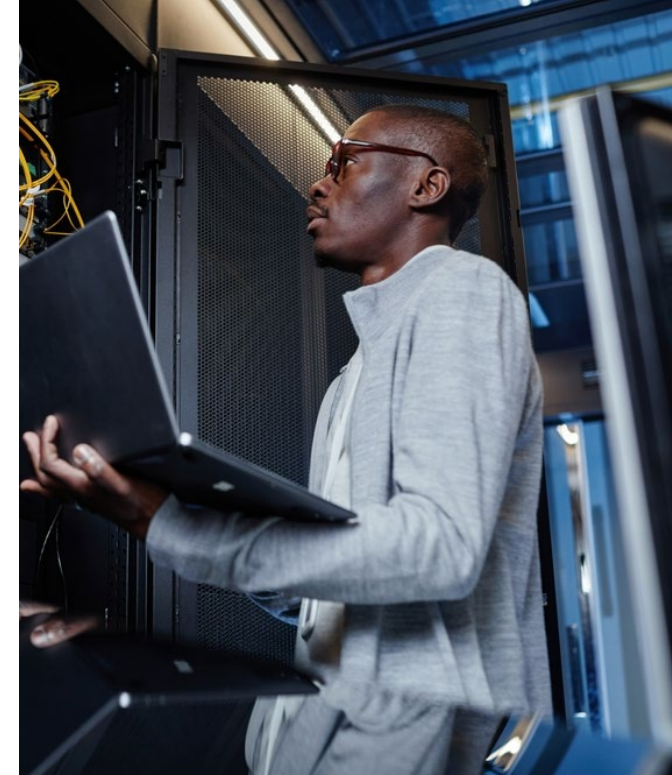


Top 5 AI-related Hiring Companies Camden County, 2024

- Cooper University Health Care
- Campbell Soup
- American Water
- Uncommon Schools
- TD Bank

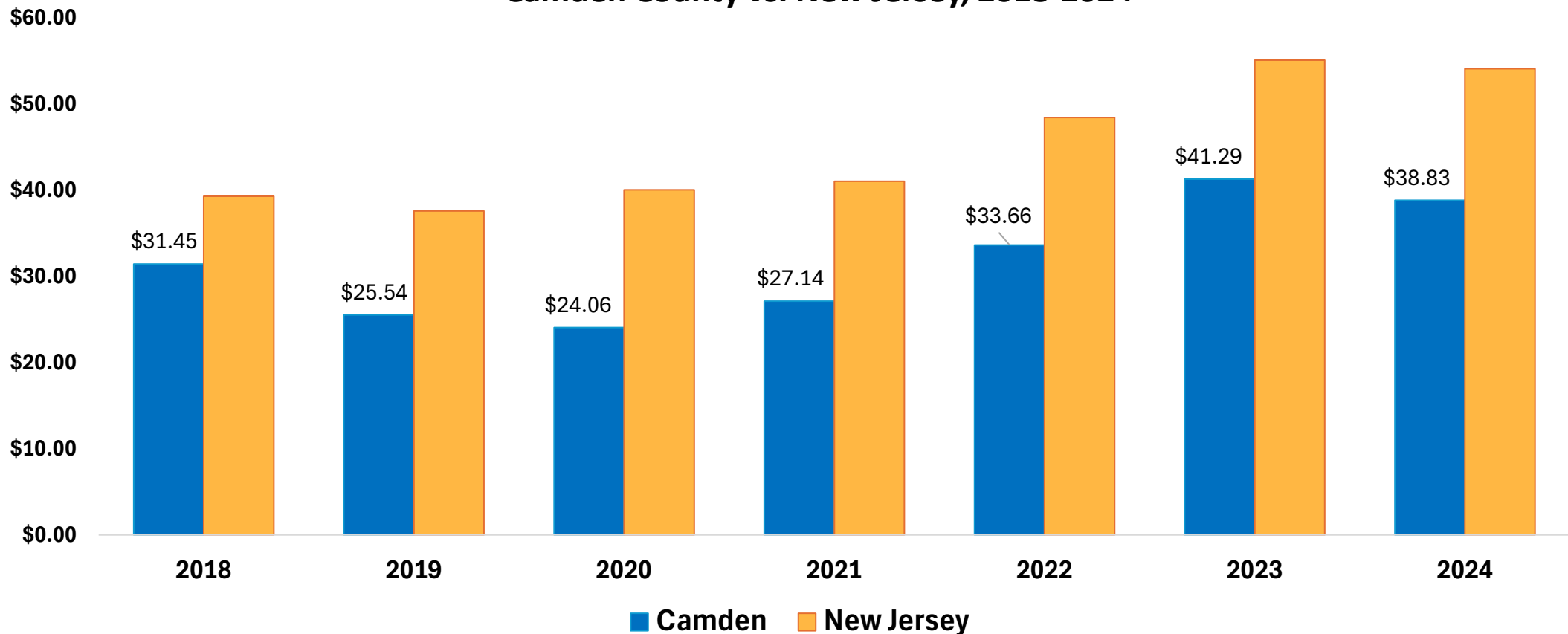
Top 5 AI-related Occupations Camden County, 2024

- Software Developers
- Project Management Specialists
- Data Scientists
- General and Operations Managers
- Financial and Investment Analysts



In Camden County, the median hourly wage for AI-related job postings is below the state median.

Median Hourly Wage in AI-related Job Postings
Camden County vs. New Jersey, 2018-2024





TAKEAWAYS

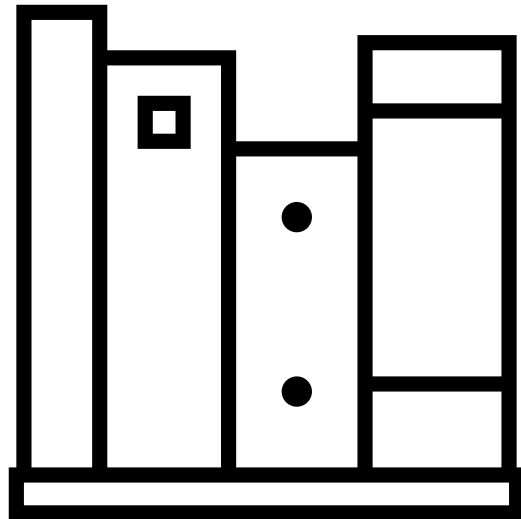


- **Key Economic and Workforce Insights: Camden County**
 - Camden County's population is younger and less diverse than the state.
 - The proportion of Camden County residents with some college, no degree is 1.9 percentage points above the state.



- **Key Economic and Workforce Insights: Camden County (Continued)**
 - **Industry Composition**
 - 26.6% of business establishments are in health care and social assistance.
 - The health care and social assistance sector has higher employment shares in Camden County compared to the state.

2025 Report Overview and Subscription Information



This report was prepared by the Office of Research and Information, Division of Economic & Demographic Research. This division collects and disseminates vital data on employers, employees, and population demographics.

2025-2026 NJDOL PUBLICATIONS

- [Real-Time Insights: Analysis of Job Posting Data in New Jersey for 2025](#) (January 2026)
- [Identifying and Tracking Emerging Occupations in New Jersey's Key Sectors](#) (January 2026)
- [New Jersey's Manufacturing Sector](#) (Winter 2025)
- [County Brief: Labor Market Facts](#) (December 2025)
- [Labor Market Spotlight - Celebrating New Jersey's Veterans](#) (Issue No. 28, Volume 3: November 2025)
- [Labor Market Spotlight - New Jersey's Waterways Help Keep the Economy Flowing](#) (Issue No. 27, Volume 3: October 2025)
- [New Jersey Employment Situation](#) (September 2025)
- [Job Openings and Labor Turnover Survey \(JOLTS\)](#) (August 2025)
- [New Jersey Building Permits](#) (August 2025)
- [New Jersey's Life Sciences Sector](#) (Fall 2025)
- [Labor Market Spotlight - The Industries Powering New Jersey's Special Moments](#) (Issue No. 26, Volume 3: August 2025)
- [New Jersey's Health Care Sector](#) (June 2025)
- [New Jersey Business Employment Dynamics](#) (May 2025)
- [Survey of Occupational Injuries and Illnesses \(SOII\)](#) (April 2025)
- [Labor Market Spotlight - Fortune 500 Companies](#) (Issue No. 25, Volume 3: March 2025)
- [Labor Market Spotlight - Young Adult Workforce](#) (Issue No. 24, Volume 3: January 2025)

JOIN OUR LIST

Link: nj.gov/labor/subscribetoori





THANK YOU!



APPENDIX

**Actual and Projected Employment by Occupation Group, Camden County
Top 15 Occupations Ranked by 2032 Employment Projections**

Occupational Group	2022 Actual	2032 Projected	Net Change	Percent Change
Office and Administrative Support	29,500	27,850	-1,650	-5.6%
Transportation and Material Moving	22,700	24,400	1,700	7.5%
Sales and Related	20,300	19,750	-550	-2.7%
Healthcare Practitioners and Technical	17,050	18,850	1,800	10.6%
Educational Instruction and Library	16,750	17,250	500	3.0%
Management	15,350	16,200	850	5.5%
Healthcare Support	13,150	15,350	2,200	16.7%
Food Preparation and Serving Related	14,700	15,050	350	2.4%
Business and Financial Operations	12,000	12,250	250	2.1%
Production	10,050	10,050	0	0.0%
Building and Grounds Cleaning and Maintenance	8,450	8,700	250	3.0%
Personal Care and Service	8,250	8,700	450	5.5%
Construction and Extraction	7,950	8,200	250	3.1%
Installation, Maintenance, and Repair	7,500	7,750	250	3.3%
Computer and Mathematical	6,250	6,750	500	8.0%