

Gloucester County

Division of Economic and Demographic Research

Office of Research & Information

New Jersey Department of Labor and Workforce Development

February 2026

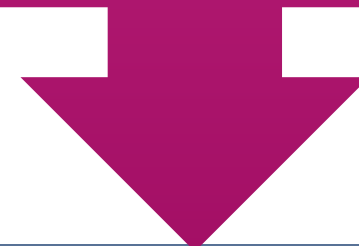


TABLE OF CONTENTS

Who Are We?	3
Purpose and Highlights	4
Demographic and Housing Characteristics	5
Economy	12
Job Postings	25
Takeaways	38
2025-2026 NJDOL Publications	42
Join Our List	43

**WHO ARE
WE?**

New Jersey Department of Labor
Office of Research and Information



Division of Economic and Demographic
Research

SDC

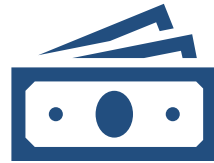
BLS

LMI

The purpose of this report is to highlight the key demographic and economic trends in the county



Gloucester County's median age matches the state's, while its share of foreign-born residents is lower than New Jersey's.



Gloucester County's real GDP ranks 15th among all New Jersey counties.



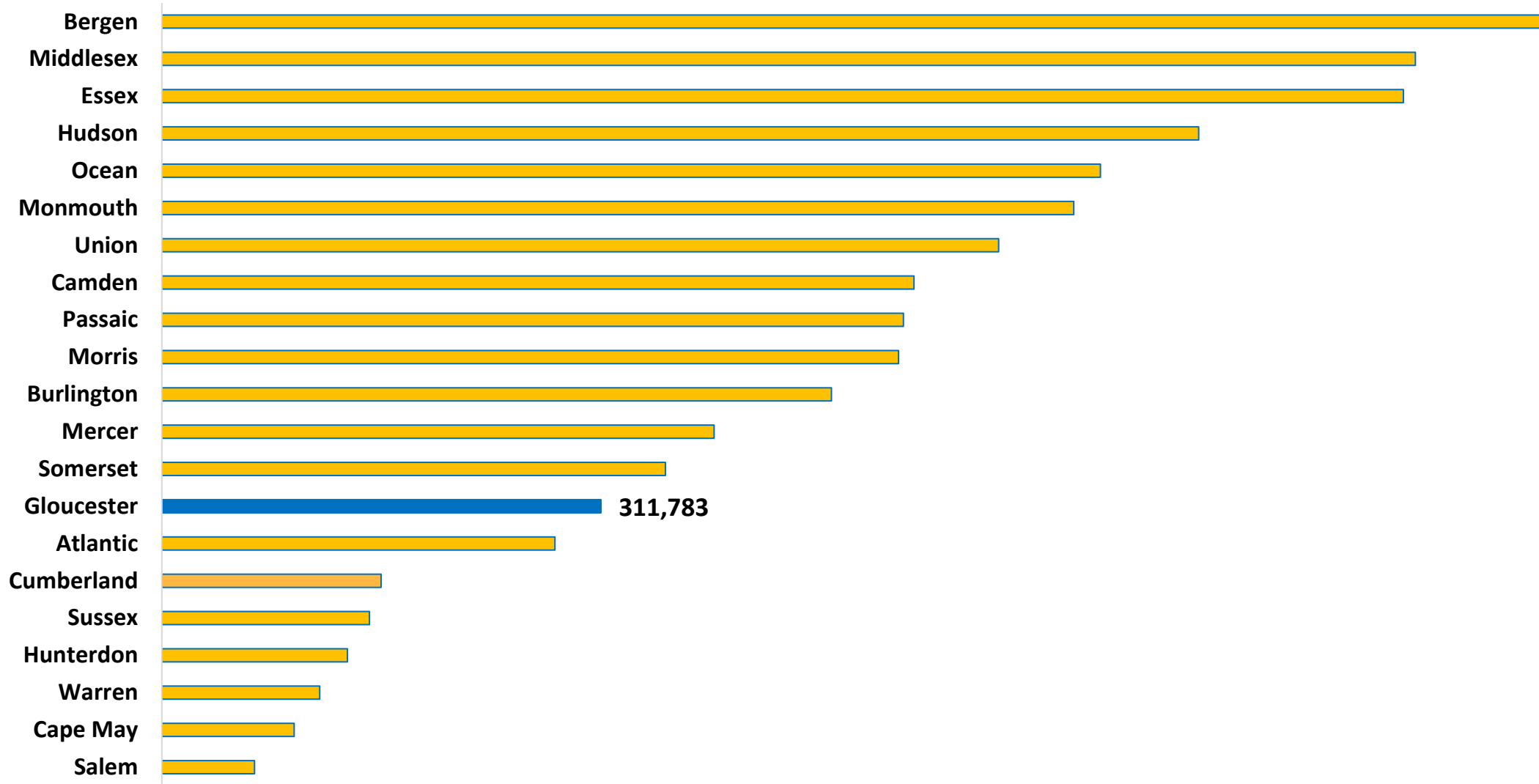
The **top** occupations in demand include Registered Nurses, Retail Salespersons, Laborers and Freight, Stock and Material Movers, Hand.



DEMOGRAPHIC AND HOUSING CHARACTERISTICS

Gloucester County's population was 311,783 in 2024.

Population Estimates by County in New Jersey, 2024



Gloucester County's median age matches the state's, while the share of foreign-born residents is lower than New Jersey's.

Demographic Characteristics

Indicator	Gloucester County	New Jersey
Median Age	40.1	40.1
% of Older Population (65+)	18.0%	18.0%
% of Language Other Than English Spoken at Home	10.1%	34.3%
% of Foreign-Born Population	6.6%	25.0%
% of Hispanic or Latino (of Any Race)	9.2%	23.5%

The share of Gloucester County residents with an associate's degree is 2.3 percentage points above the state.

Educational Attainment (Population 25 Years and Older)

Indicator	Gloucester County	New Jersey
High School or Equivalent Degree	29.5%	24.7%
Some College, No Degree	17.0%	14.5%
Associate's Degree	8.9%	6.6%
Bachelor's Degree or Higher	37.6%	44.5%
High School Degree or Higher	93.0%	90.3%

Gloucester County has a higher median household income and a lower poverty rate compared to the state.

Income & Poverty

Indicator	Gloucester County	New Jersey
Median Household Income	\$105,630	\$104,294
% of Poverty	6.8%	9.2%

Note: Median Household Income in the Past 12 Months (in 2024 Inflation-Adjusted Dollars)

Gloucester County residents pay lower rent and have a higher homeownership rate compared to the state average.

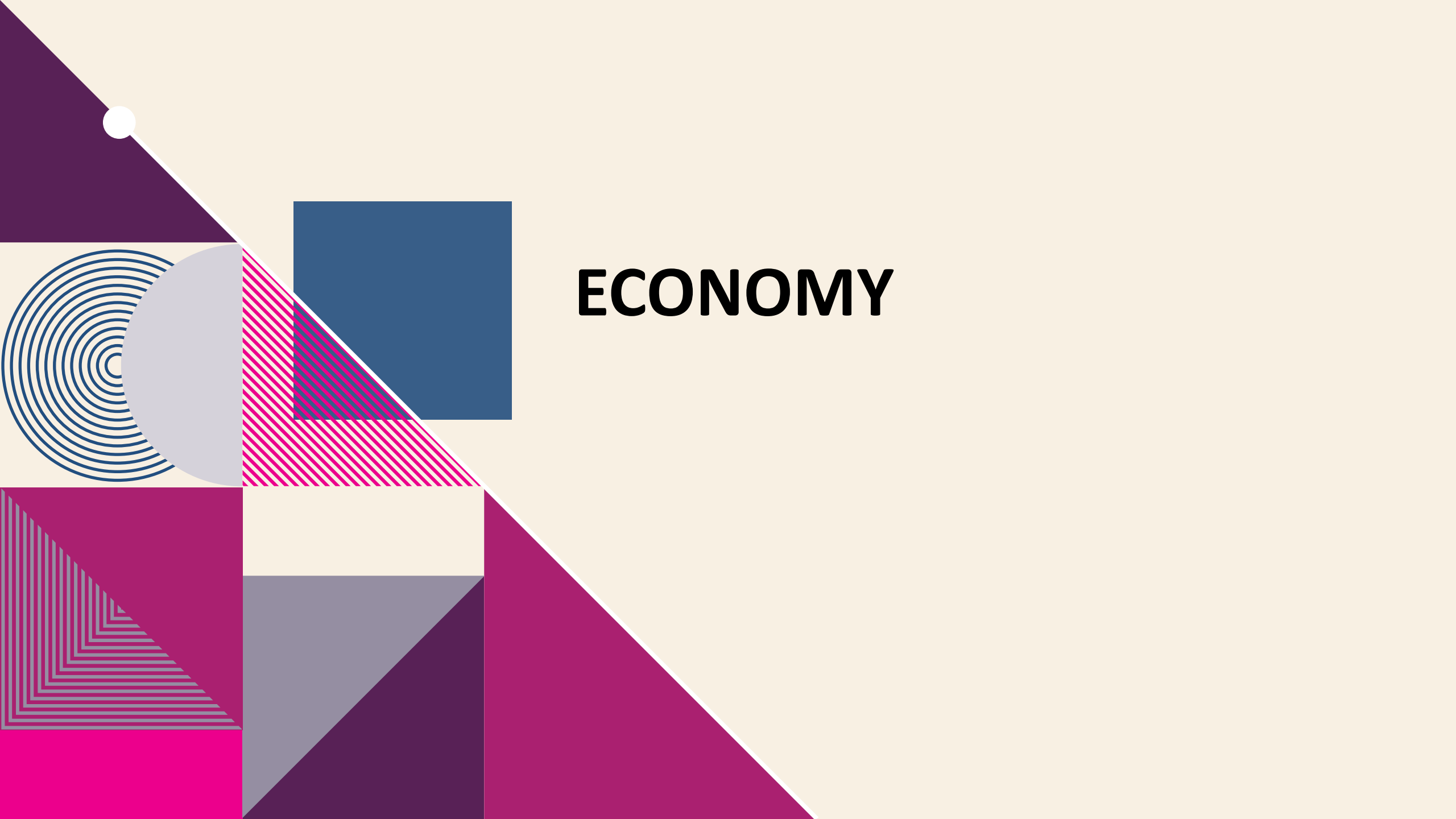
Housing Characteristics

Indicator	Gloucester County	New Jersey
Total Households	112,557	3,543,944
Median Gross Rent	\$1,504	\$1,800
Homeownership Rate	81.2%	63.9%
% of Housing Value of Owner Occupied (≥\$300,000)	61.7%	80.7%

Gloucester County residents have shorter commute times, and a higher percentage of remote workers compared to the state average.

Commuting Characteristics

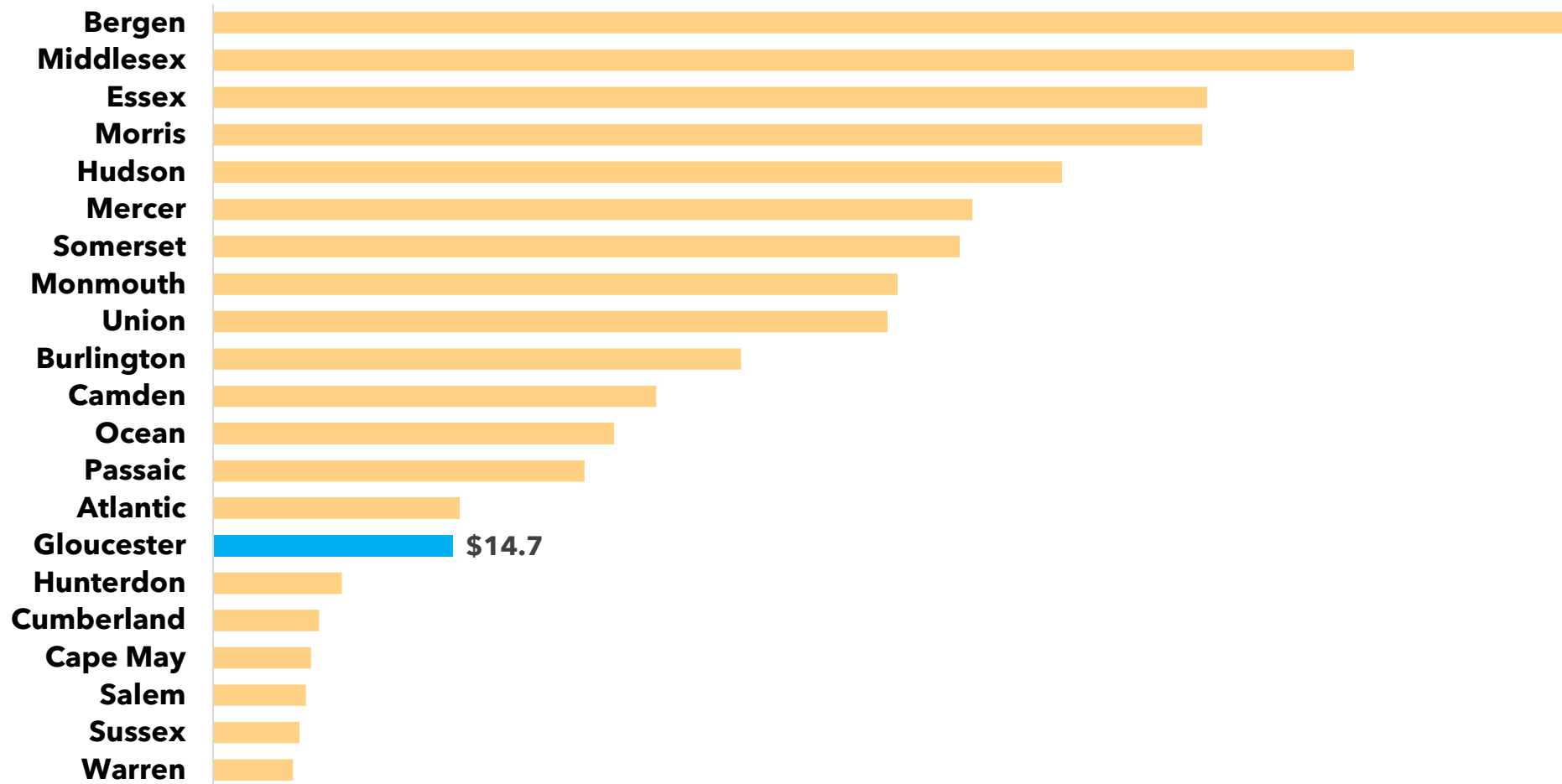
Indicator	Gloucester County	New Jersey
Average Travel Time to Work (in Minutes)	28.7	31.9
% of Public Transportation	0.7%	9.7%
% of Working From Home	13.8%	13.5%



ECONOMY

In 2024, Gloucester County's real GDP was \$14.7 billion, ranking 15th among all New Jersey counties.

Real Gross Domestic Product (GDP) by County in New Jersey, 2024 (\$, in billions)





Establishments and Employment

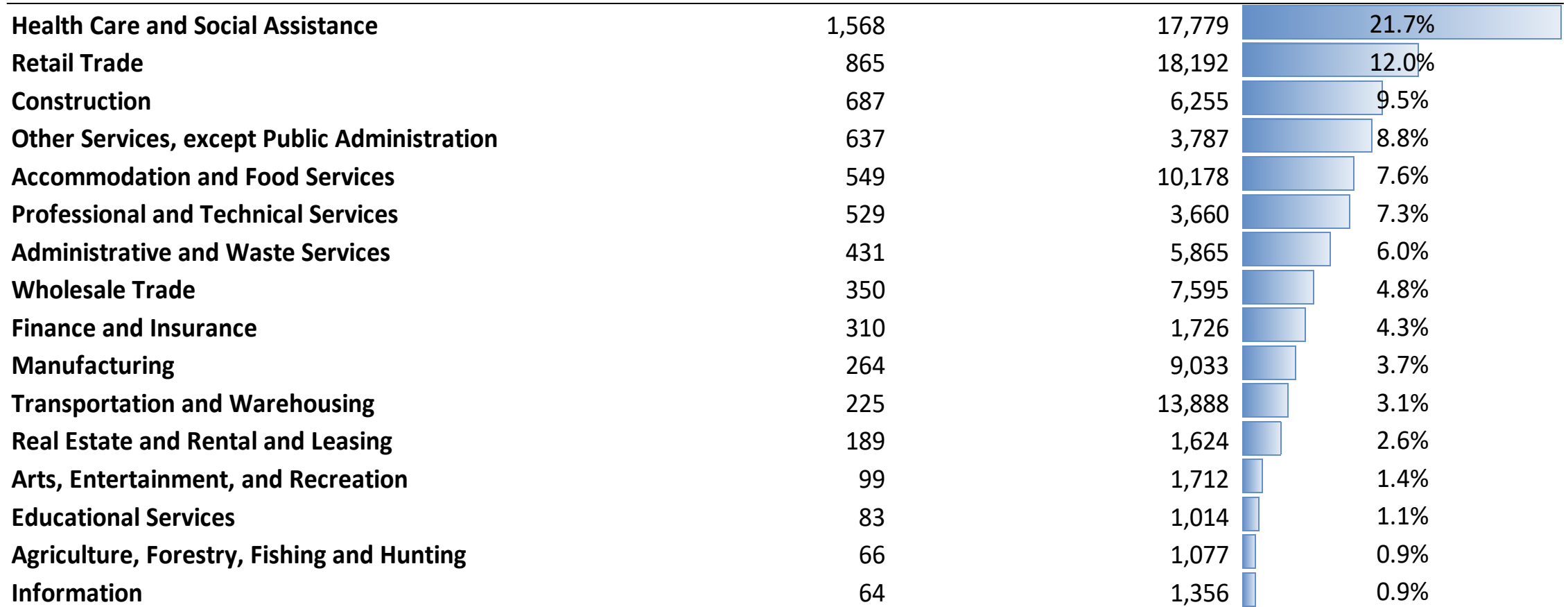
Gloucester County

Source: Quarterly Census of Employment and Wages (QCEW) program, 2018 and 2024 Annual Averages

The QCEW program produces quarterly and annual data on the number of establishments, total employment, and wages for workers covered by New Jersey unemployment insurance (UI) laws, as well as federal employees under the Unemployment Compensation for Federal Employees (UCFE) program. This data is published at various geographical and industry levels.

21.7% of Gloucester County establishments are in health care and social assistance.

**Gloucester County Establishments, Ranked by Percent of the Total Establishments
Total Private Ownerships**

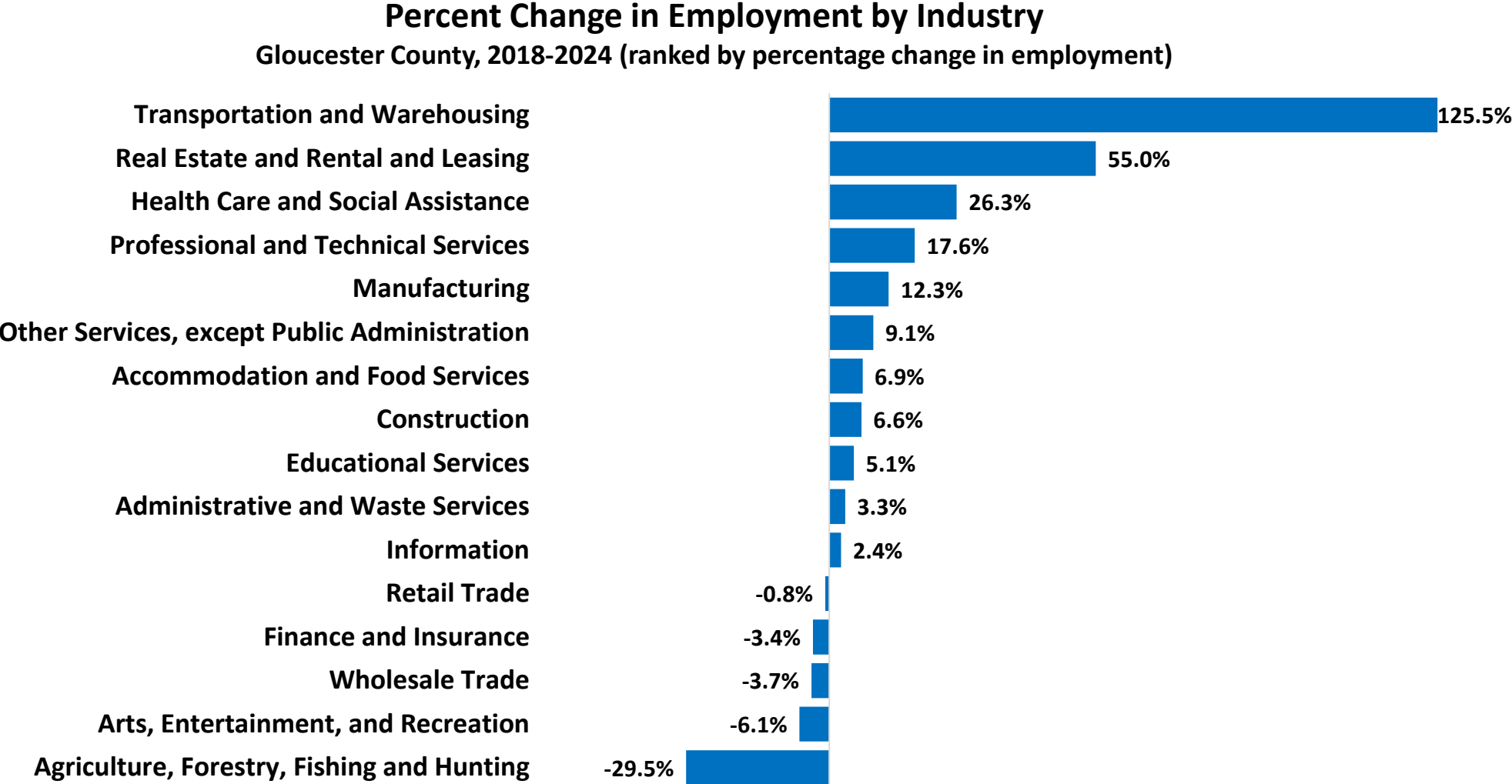


In Gloucester County, transportation and warehousing has the highest employment share difference compared to state averages.

Employment by Private Industries Gloucester County vs. New Jersey, 2024

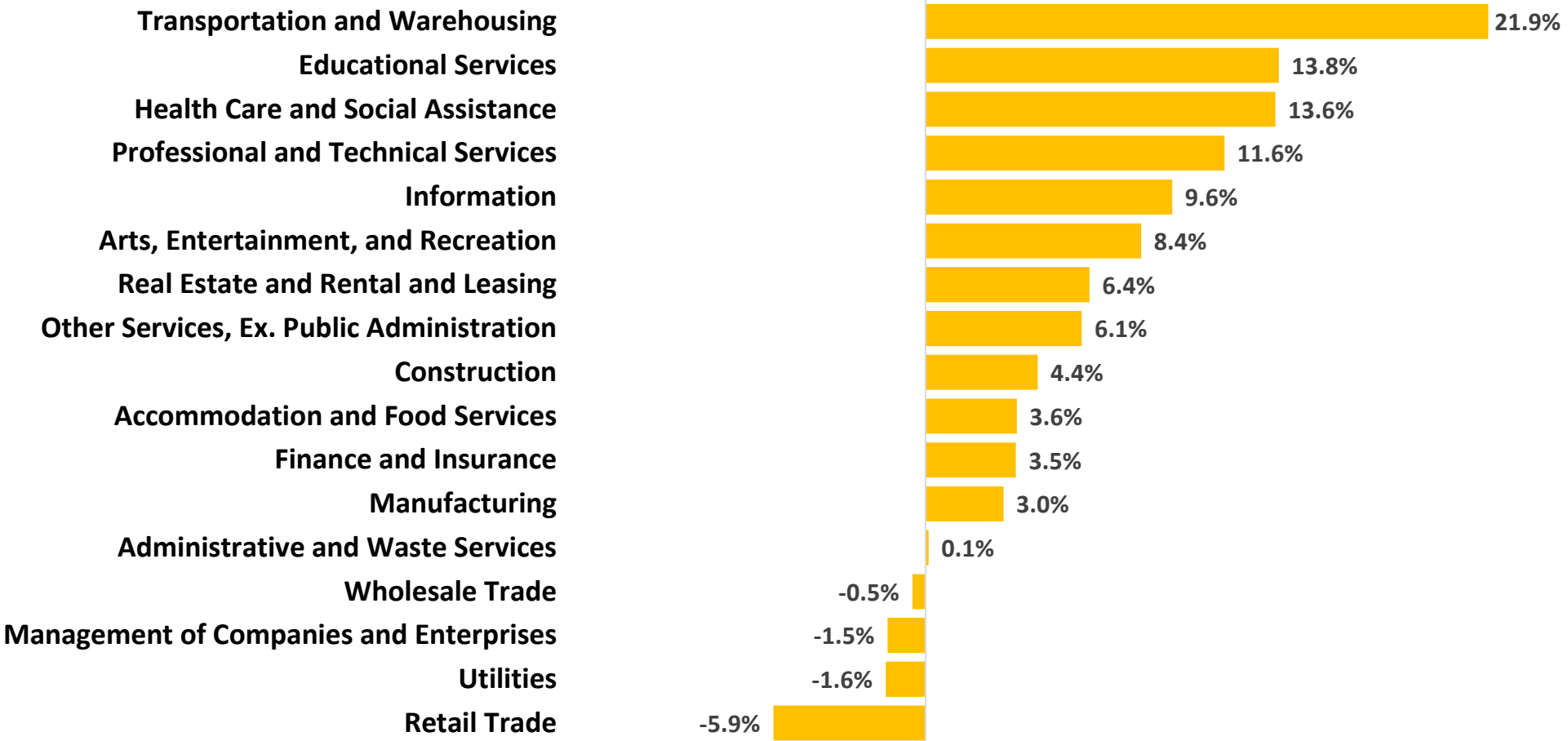
Industry	Gloucester County		New Jersey		Difference between
	Employment	% of Total	Employment	% of Total	
Construction	6,255	5.9%	164,014	4.5%	1.5%
Manufacturing	9,033	8.6%	253,054	6.9%	1.7%
Wholesale Trade	7,595	7.2%	213,549	5.8%	1.4%
Retail Trade	18,192	17.3%	427,521	11.6%	5.6%
Transportation and Warehousing	13,888	13.2%	233,943	6.4%	6.8%
Information	1,356	1.3%	76,199	2.1%	-0.8%
Finance and Insurance	1,726	1.6%	189,987	5.2%	-3.5%
Real Estate and Rental and Leasing	1,624	1.5%	63,263	1.7%	-0.2%
Professional and Technical Services	3,660	3.5%	336,105	9.1%	-5.7%
Administrative and Waste Services	5,865	5.6%	286,750	7.8%	-2.2%
Educational Services	1,014	1.0%	90,018	2.4%	-1.5%
Health Care and Social Assistance	17,779	16.9%	656,356	17.8%	-1.0%
Arts, Entertainment, and Recreation	1,712	1.6%	73,699	2.0%	-0.4%
Accommodation and Food Services	10,178	9.7%	328,905	8.9%	0.7%
Other Services, except Public Administration	3,787	3.6%	144,086	3.9%	-0.3%

Between 2018 and 2024, transportation and warehousing saw the largest employment growth in Gloucester County, increasing by 125.5%.



Transportation and warehousing saw strong growth in New Jersey, expanding by 21.9% from 2018 to 2024.

Percent Change in Employment by Industry
New Jersey, 2018-2024 (ranked by percentage change in employment)



Source: ORI-EDR, Quarterly Census of Employment and Wages (QCEW) program, 2024



Unemployment Trend

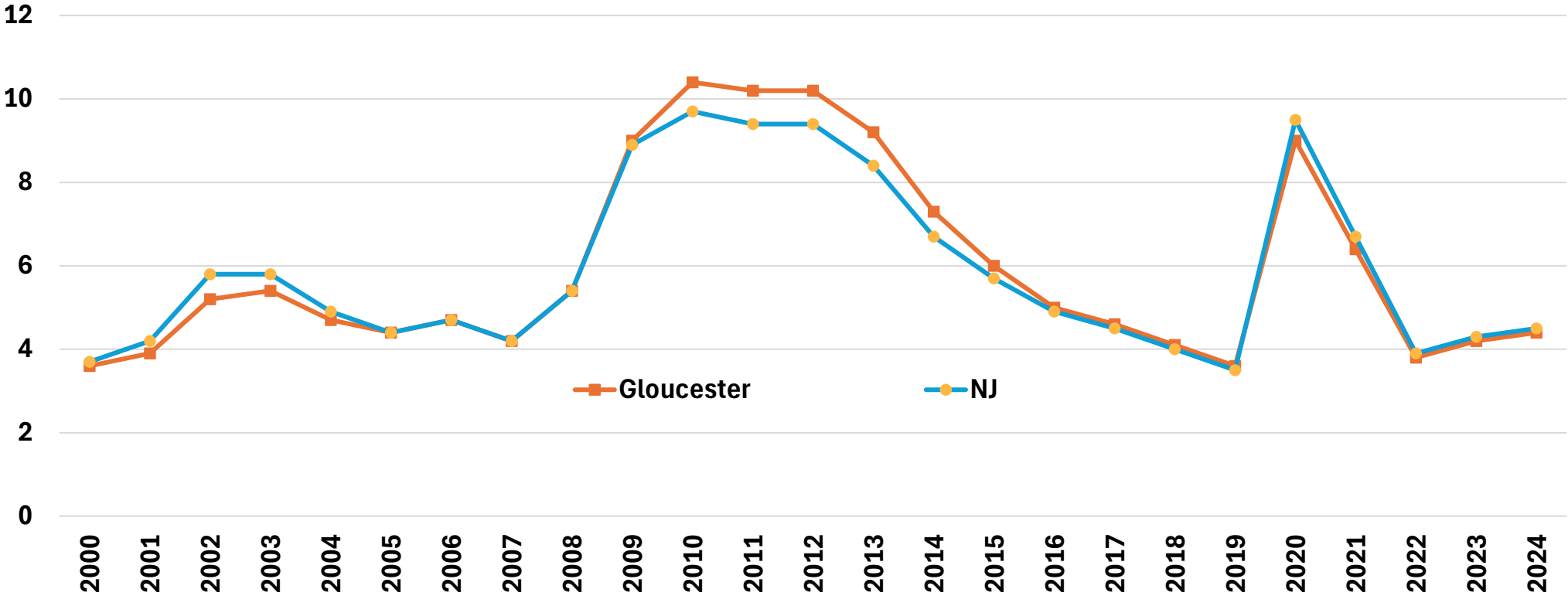
Gloucester County vs. New Jersey

Source: Local Area Unemployment Statistics (LAUS), 2000 to 2024

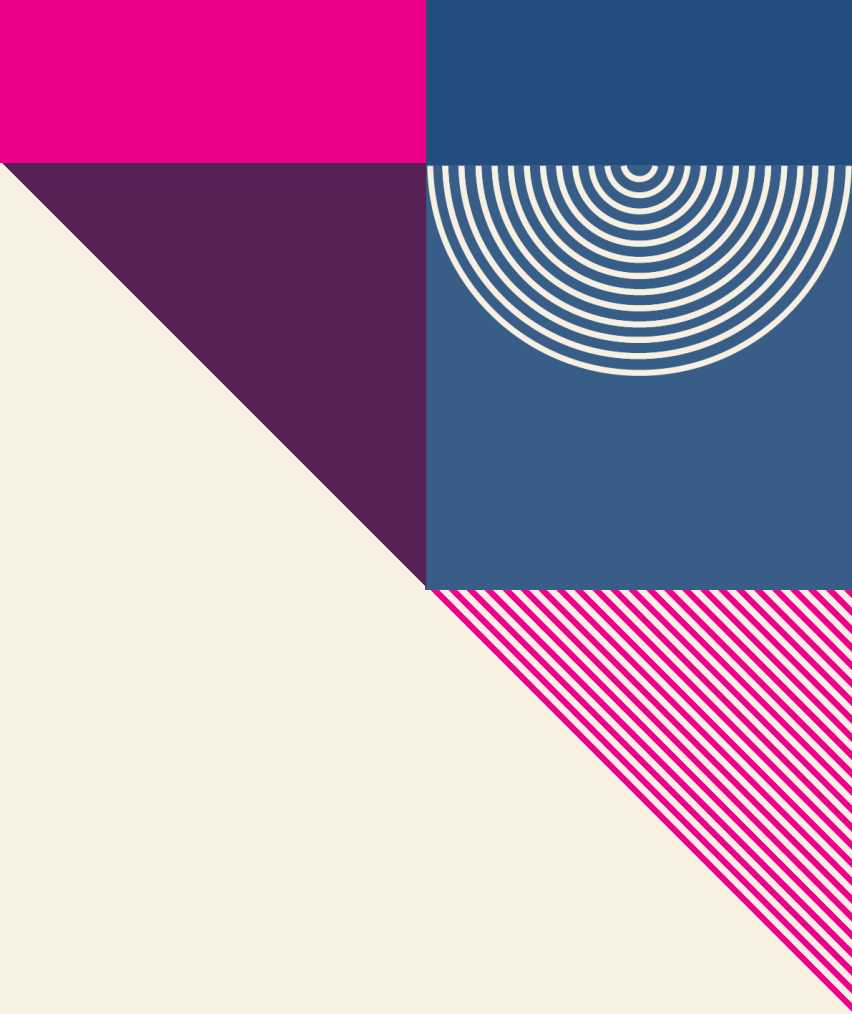
The Local Area Unemployment Statistics (LAUS) program produces monthly and annual employment, unemployment, and labor force data for Census regions and divisions, States, counties, metropolitan areas, and many cities, by place of residence.

The unemployment rate in Gloucester County follows state trends and stays about the same as the New Jersey average.

Unemployment Rate Gloucester County vs. New Jersey, 2000-2024



Source: ORI-EDR, Local Area Unemployment Statistics (LAUS) program, 2024



Occupational Employment and Wages

Gloucester County vs. New Jersey

Source: 2024 Occupational Employment and Wage Statistics' Estimates (OEWS), Division of Economic and Demographic Research, June 2025

The wage data published on this page are made possible due to thousands of New Jersey employers who participated in the Occupational Employment and Wage Statistics (OEWS) Survey over the past three years. The data collected in the OEWS Survey provides valuable input for wage comparisons and for identifying trends in emerging or declining occupations—precisely the kind of information needed by both employers, as well as those who are choosing or changing careers.

28.8% of Gloucester County's total employment is concentrated in the top 10 occupations.

Top 10 Occupations, Ranked by Employment Gloucester County, 2024

Occupation	Employment	% of Total Employment	Median Hourly Wage
Packers and Packagers, Hand	7,270	5.8%	\$20.76
Laborers and Freight, Stock, and Material Movers, Hand	4,980	4.0%	\$21.60
Fast Food and Counter Workers	3,540	2.8%	\$15.13
Retail Salespersons	3,530	2.8%	\$16.79
Stockers and Order Fillers	3,460	2.8%	\$18.52
Cashiers	3,360	2.7%	\$15.13
Home Health and Personal Care Aides	3,000	2.4%	\$18.04
Registered Nurses	2,510	2.0%	\$48.29
Heavy and Tractor-Trailer Truck Drivers	2,230	1.8%	\$28.43
Office Clerks, General	1,980	1.6%	\$22.13
Top 10 Occupations, Total	35,860	28.8%	
All Occupations, Total	124,650	100.0%	\$22.27

Note: OEWS collects the data for 2024.

In New Jersey, the top 10 occupations account for 20.1% of total employment.

Top 10 Occupations, Ranked by Employment New Jersey, 2024

Occupation	Employment	% of Total Employment	Median Hourly Wage
Home Health and Personal Care Aides	105,460	2.5%	\$17.83
Laborers and Freight, Stock, and Material Movers	101,720	2.4%	\$18.78
Registered Nurses	95,150	2.2%	\$49.39
Cashiers	93,270	2.2%	\$15.96
Retail Salespersons	87,760	2.1%	\$17.13
Fast Food and Counter Workers	86,980	2.0%	\$16.01
Packers and Packagers, Hand	76,060	1.8%	\$20.56
Office Clerks, General	71,140	1.7%	\$23.07
Stockers and Order Fillers	70,780	1.7%	\$17.69
Janitors and Cleaners	67,590	1.6%	\$17.94
Top 10 Occupations, Total	855,910	20.1%	
All Occupations, Total	4,250,430	100.0%	\$27.51

Note: OEWS collects the data for 2024.

Between 2022 and 2032 in Gloucester, the transportation and material moving occupational group is projected to see the largest growth (+5,150).

**Actual and Projected Employment by Occupational Group, Gloucester County
Top 10 Occupation Groups Ranked by 2032 Employment Projections**

Occupational Group	2022 Actual	2032 Projected	Net Change	Percent Change
Transportation and Material Moving	21,400	26,550	5,150	24.1%
Office and Administrative Support	16,750	17,200	450	2.7%
Sales and Related	14,450	14,150	-300	-2.1%
Educational Instruction and Library	11,300	12,450	1,150	10.2%
Food Preparation and Serving Related	9,350	10,200	850	9.1%
Management	8,100	9,000	900	11.1%
Healthcare Practitioners and Technical	6,300	7,300	1,000	15.9%
Production	6,100	6,250	150	2.5%
Business and Financial Operations	5,700	6,200	500	8.8%
Healthcare Support	5,050	6,100	1,050	20.8%



JOB POSTINGS



Job Postings

Gloucester County vs. New Jersey

Source: Lightcast

Lightcast collect raw data on postings from more than 160,000 online sources, then synthesize and interpret those findings to provide meaningful insight in near real time. Job posting analytics can identify supply and demand for workers, skills, and jobs all over the world, as well as important contextual details like compensation trends.

Limitations: One job posting does not necessarily equal one actual job opening. Some companies may post jobs to signal growth to investors or advertise positions in multiple states. Additionally, a decline in job postings doesn't always indicate reduced demand; it could simply mean that companies have already filled their positions and are no longer actively recruiting. We treat this data as directional, offering insights into employer demand rather than exact measurements.



Top 5 Hiring Companies Gloucester County, 2024

- **Rowan University**
- **Inspira Health Network**
- **Thomas Jefferson University Health**
- **Haven Behavioral Healthcare**
- **BAYADA Home Health Care**

Top 5 Occupations Gloucester County, 2024

- Registered Nurses
- Retail Salespersons
- Laborers and Freight, Stock and Material Movers, Hand
- First-Line Supervisors of Retail Sales Workers
- Heavy and Tractor-Trailer Truck Drivers



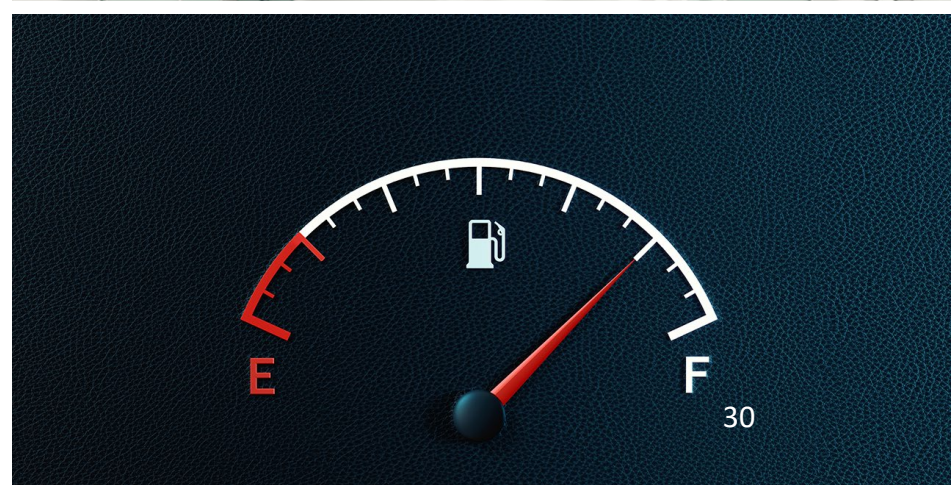
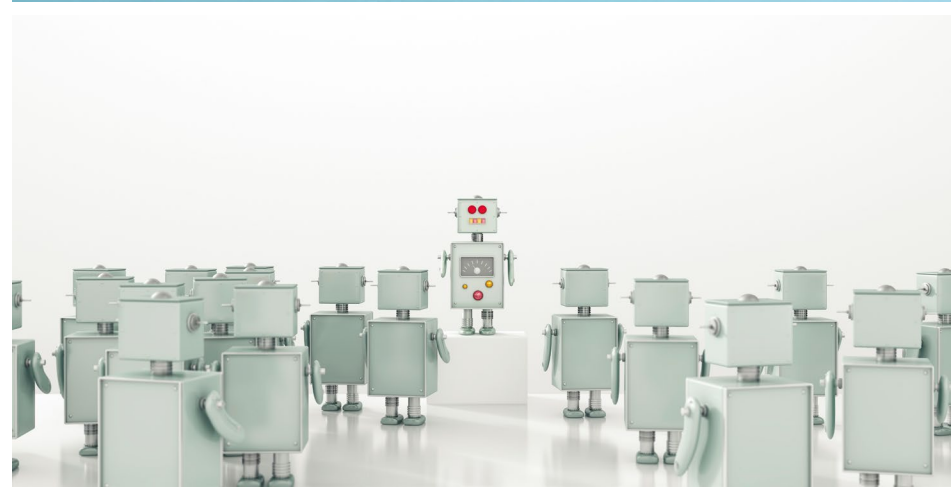


Top 5 Specialized Skills Gloucester County, 2024

- **Merchandising**
- **Warehousing**
- **Nursing**
- **Selling Techniques**
- **Auditing**

Top 5 Software Skills in Gloucester County

- Microsoft Office (e.g., Excel, and PowerPoint)
- Programming Language (e.g., SQL, Python, and R)
- Inventory/Warehouse Management Systems
- SAP Applications
- Salesforce

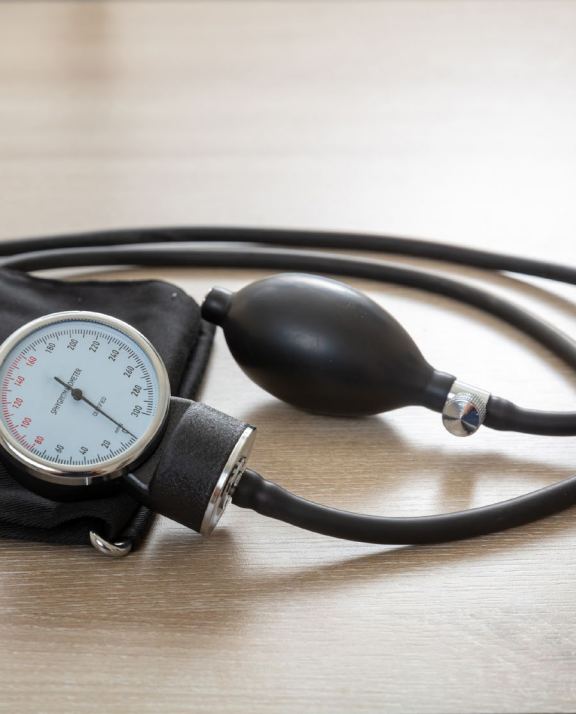




Top 5 Soft Skills Gloucester County, 2024

- **Communication**
- **Customer Service**
- **Sales**
- **Management**
- **Operations**





Top 5 Certificates in Gloucester County

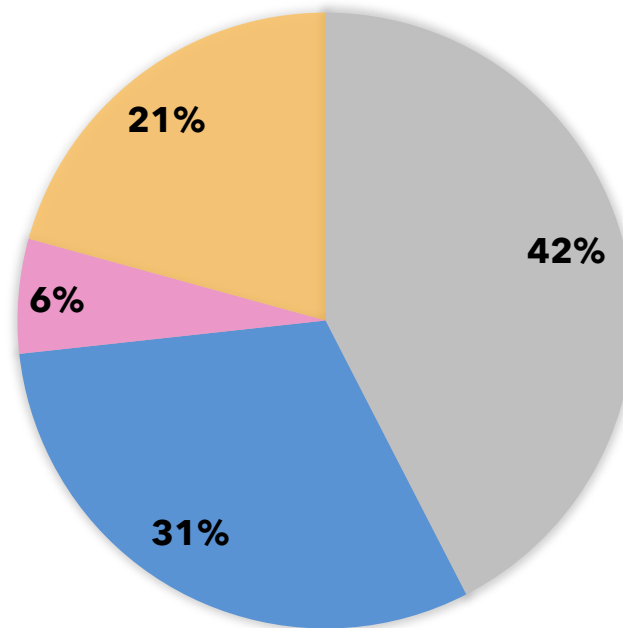
- Valid Driver's License
- Registered Nurse (RN)
- Basic Life Support (BLS) Certification
- Cardiopulmonary Resuscitation (CPR) Certification
- Licensed Practical Nurse (LPN)



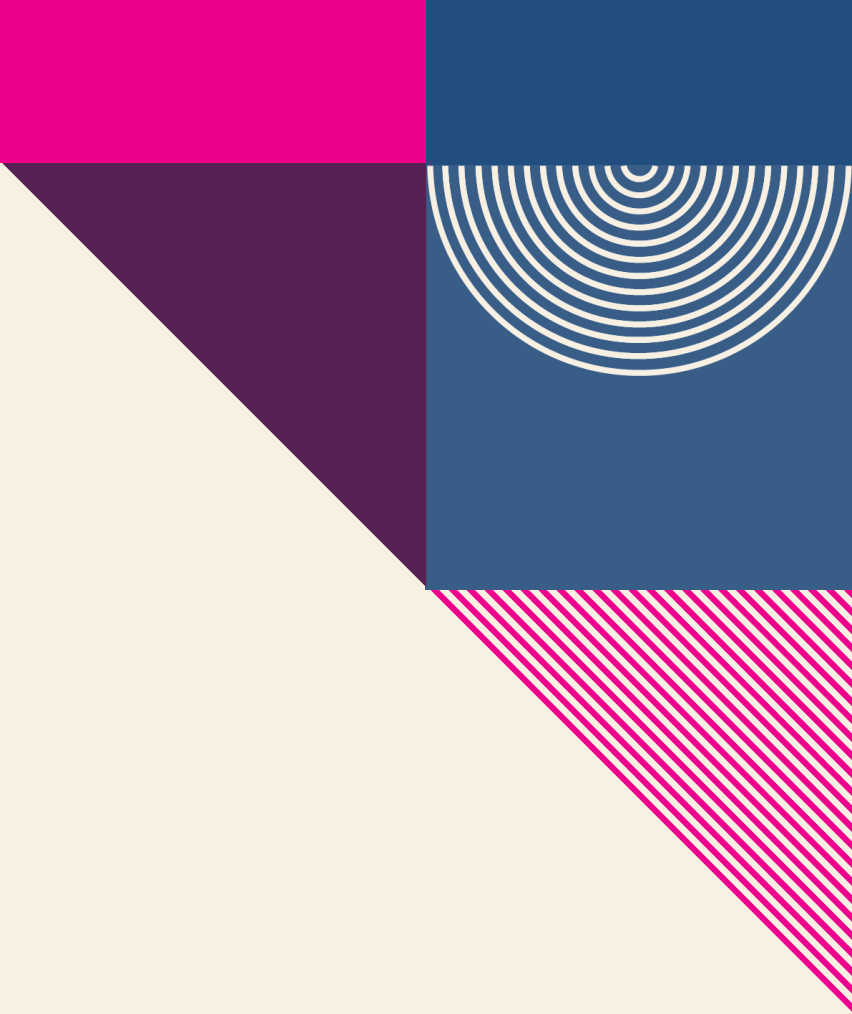
21% of all job postings in Gloucester County require a bachelor's degree or higher.

Job Postings by Educational Attainment Gloucester County, 2024

■ No education listed ■ High school or GED ■ Associate's degree ■ Bachelor's degree or higher



Note: Bachelor's degree or higher includes Bachelor's Degree, Master, Ph.D. or Professional Degree. While 42% of job postings did not specify educational attainment, this does not necessarily mean there are no requirements for it.



AI-related Job Postings

Gloucester County vs. New Jersey

Source: Lightcast

To identify AI-related job postings, ORI-EDR compiled a curated list of 130 specific terms. A job listing is deemed AI-related if any of these terms appear in the skills section. A job listing is classified as AI-related if any of these terms are present in the skills section. This includes, but is not limited to, terms such as "AI/ML Inference," "Conversational AI," "Machine Learning Algorithms," "Supervised Learning," and "Deep Learning."

Limitations: One job posting does not necessarily equal one actual job opening. Some companies may post jobs to signal growth to investors or advertise positions in multiple states. Additionally, a decline in job postings doesn't always indicate reduced demand; it could simply mean that companies have already filled their positions and are no longer actively recruiting. We treat this data as directional, offering insights into employer demand rather than exact measurements.

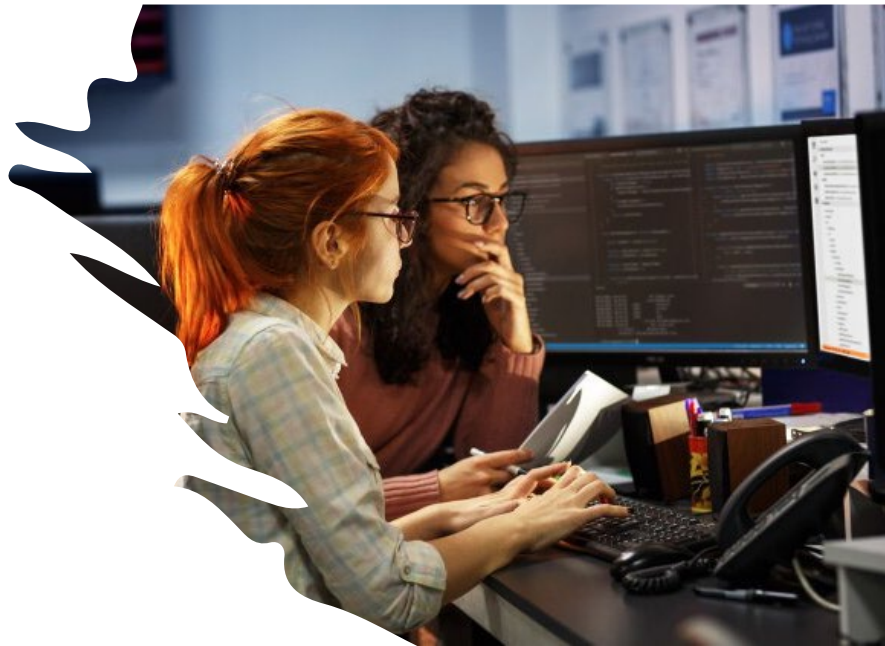
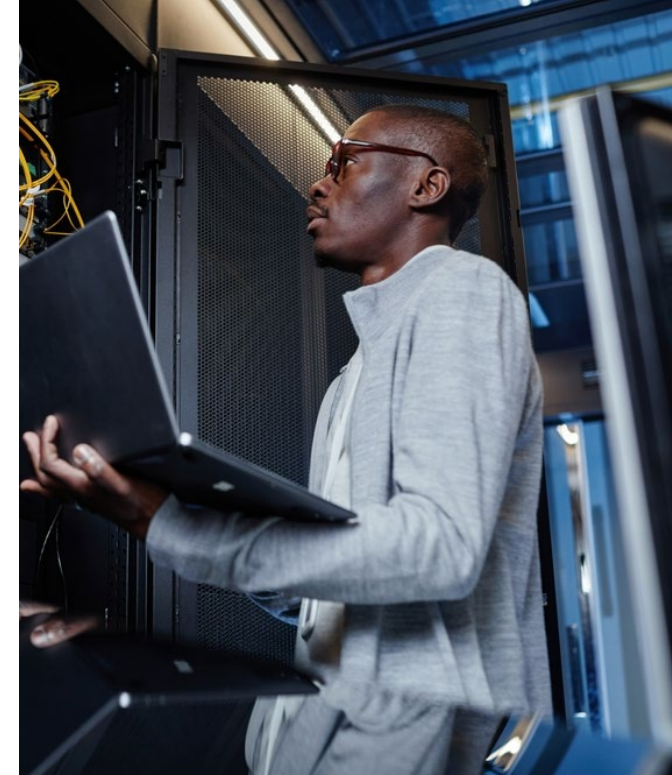


Top 5 AI-related Hiring Companies Gloucester County, 2024

- Rowan University
- Uncommon Schools
- Sam's Club
- Thomas Jefferson University
- BAYADA Home Health Care

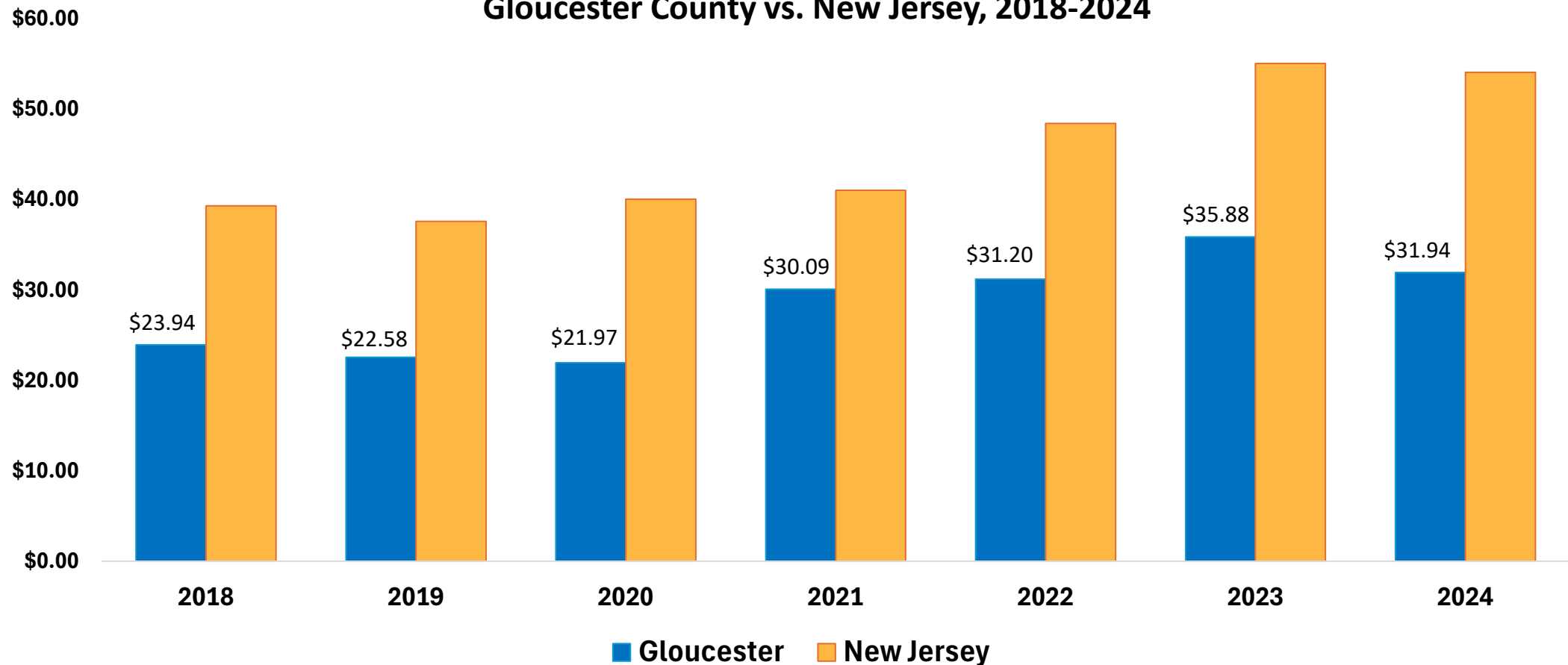
Top 5 AI-related Occupations Gloucester County, 2024

- Laborers and Freight, Stock, and Material Movers, Hand
- Registered Nurses
- Maintenance and Repair Workers, General
- Project Management Specialists
- Software Developers



In Gloucester County, the median hourly wage for AI-related job postings is lower than the state.

Median Hourly Wage in AI-related Job Postings
Gloucester County vs. New Jersey, 2018-2024





TAKEAWAYS



- **Key Economic and Workforce Insights: Gloucester County**
 - **Demographics**
 - Gloucester County's population is the same age and less diverse than New Jersey.
 - The proportion of Gloucester County residents with an associate's degree is 2.3 percentage points above the state.

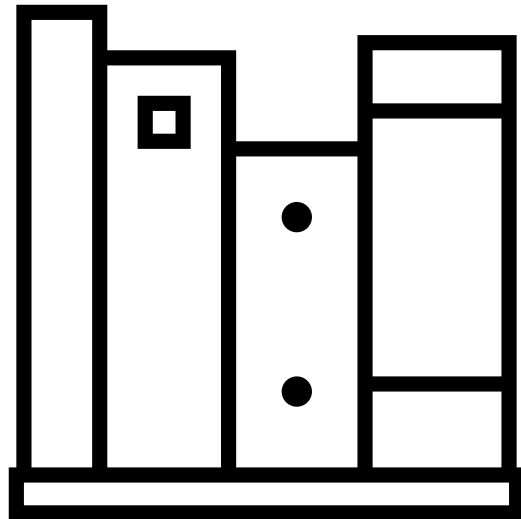


- **Key Economic and Workforce Insights: Gloucester County (Continued)**

- **Industry Composition**

- 21.7% of business establishments are in health care and social assistance.
- The transportation and warehousing and retail trade sectors have higher employment shares in Gloucester County compared to the state.

2025 Report Overview and Subscription Information



This report was prepared by the Office of Research and Information, Division of Economic & Demographic Research. This division collects and disseminates vital data on employers, employees, and population demographics.

2025-2026 NJDOL PUBLICATIONS

- [Real-Time Insights: Analysis of Job Posting Data in New Jersey for 2025](#) (January 2026)
- [Identifying and Tracking Emerging Occupations in New Jersey's Key Sectors](#) (January 2026)
- [New Jersey's Manufacturing Sector](#) (Winter 2025)
- [County Brief: Labor Market Facts](#) (December 2025)
- [Labor Market Spotlight - Celebrating New Jersey's Veterans](#) (Issue No. 28, Volume 3: November 2025)
- [Labor Market Spotlight - New Jersey's Waterways Help Keep the Economy Flowing](#) (Issue No. 27, Volume 3: October 2025)
- [New Jersey Employment Situation](#) (September 2025)
- [Job Openings and Labor Turnover Survey \(JOLTS\)](#) (August 2025)
- [New Jersey Building Permits](#) (August 2025)
- [New Jersey's Life Sciences Sector](#) (Fall 2025)
- [Labor Market Spotlight - The Industries Powering New Jersey's Special Moments](#) (Issue No. 26, Volume 3: August 2025)
- [New Jersey's Health Care Sector](#) (June 2025)
- [New Jersey Business Employment Dynamics](#) (May 2025)
- [Survey of Occupational Injuries and Illnesses \(SOII\)](#) (April 2025)
- [Labor Market Spotlight - Fortune 500 Companies](#) (Issue No. 25, Volume 3: March 2025)
- [Labor Market Spotlight - Young Adult Workforce](#) (Issue No. 24, Volume 3: January 2025)

JOIN OUR LIST

Link: nj.gov/labor/subscribetoori





THANK YOU!



APPENDIX

**Actual and Projected Employment by Occupation Group, Gloucester County
Top 15 Occupations Ranked by 2032 Employment Projections**

Occupational Group	2022 Actual	2032 Projected	Net Change	Percent Change
Transportation and Material Moving	21,400	26,550	5,150	24.1%
Office and Administrative Support	16,750	17,200	450	2.7%
Sales and Related	14,450	14,150	-300	-2.1%
Educational Instruction and Library	11,300	12,450	1,150	10.2%
Food Preparation and Serving Related	9,350	10,200	850	9.1%
Management	8,100	9,000	900	11.1%
Healthcare Practitioners and Technical	6,300	7,300	1,000	15.9%
Production	6,100	6,250	150	2.5%
Business and Financial Operations	5,700	6,200	500	8.8%
Healthcare Support	5,050	6,100	1,050	20.8%
Construction and Extraction	5,150	5,750	600	11.7%
Installation, Maintenance, and Repair	4,850	5,350	500	10.3%
Personal Care and Service	4,350	4,950	600	13.8%
Building and Grounds Cleaning and Maintenance	4,050	4,300	250	6.2%
Computer and Mathematical	2,800	3,250	450	16.1%