

# Hudson County

Division of Economic and Demographic Research

Office of Research & Information

New Jersey Department of Labor and Workforce Development

February 2026

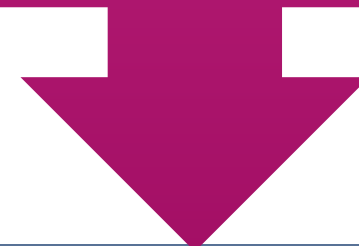


# TABLE OF CONTENTS

<b>Who Are We?</b>	<b>3</b>
<b>Purpose and Highlights</b>	<b>4</b>
<b>Demographic and Housing Characteristics</b>	<b>5</b>
<b>Economy</b>	<b>12</b>
<b>Job Postings</b>	<b>25</b>
<b>Takeaways</b>	<b>38</b>
<b>2025-2026 NJDOL Publications</b>	<b>42</b>
<b>Join Our List</b>	<b>43</b>

**WHO ARE  
WE?**

New Jersey Department of Labor  
Office of Research and Information



Division of Economic and Demographic  
Research

**SDC**

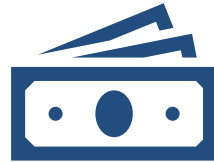
**BLS**

**LMI**

# The purpose of this report is to highlight the key demographic and economic trends in the county



Hudson County has a **lower median age and a great share of foreign-born residents** than New Jersey.



Hudson County's real GDP ranks **5<sup>th</sup>** among all New Jersey counties.



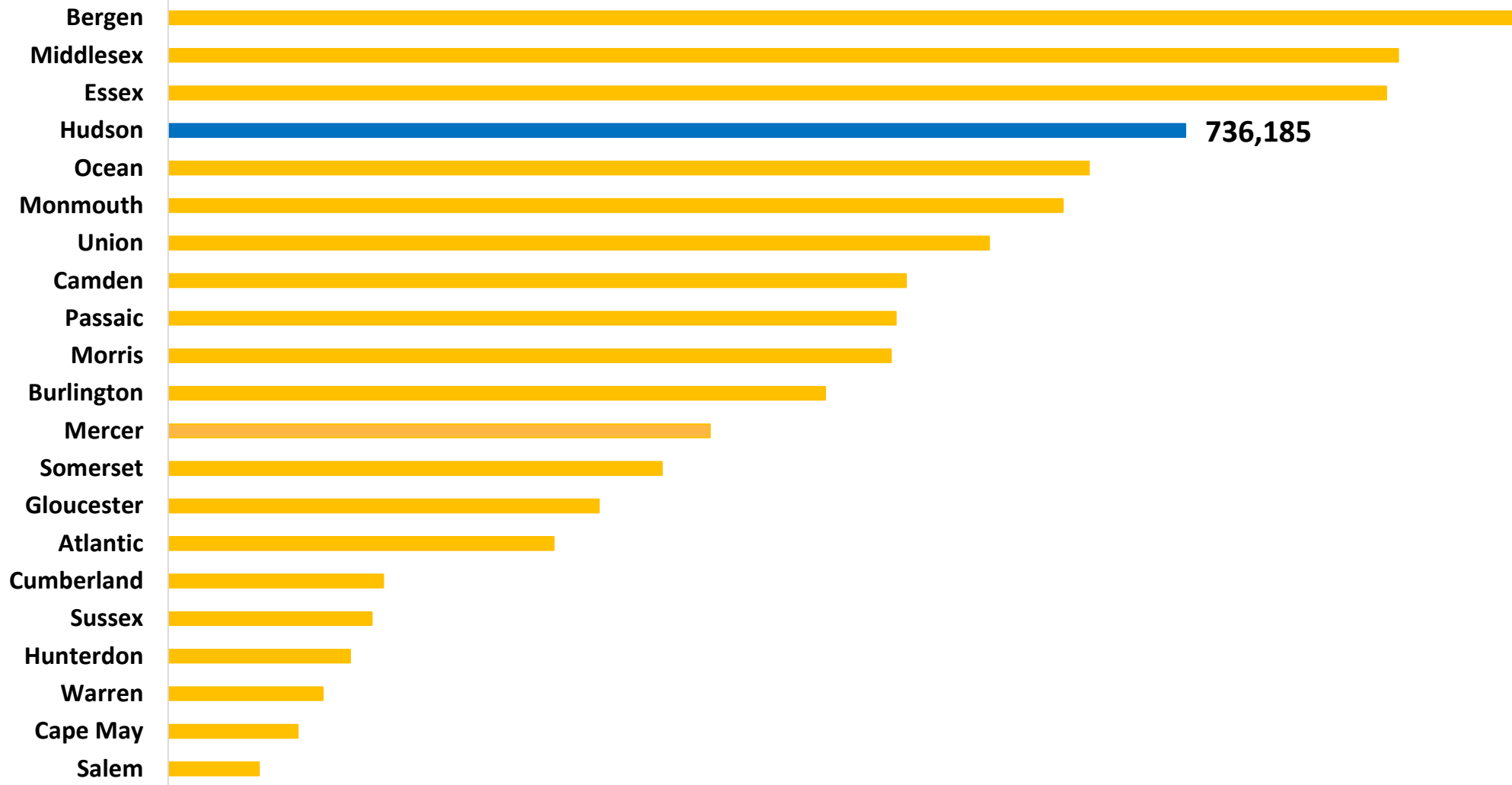
Hudson County has a diverse occupational landscape. The **top occupations** in demand include Software Developers, Registered Nurses, and Data Scientists.



# DEMOGRAPHIC AND HOUSING CHARACTERISTICS

# Hudson County's population was 736,185 in 2024.

## Population Estimates by County in New Jersey, 2024



**Hudson County has a lower median age and a greater share of foreign-born residents than New Jersey.**

### **Demographic Characteristics**

<b>Indicator</b>	<b>Hudson County</b>	<b>New Jersey</b>
<b>Median Age</b>	35.7	40.1
<b>% of Older Population (65+)</b>	13.0%	18.0%
<b>% of Language Other Than English Spoken at Home</b>	58.4%	34.3%
<b>% of Foreign-Born Population</b>	44.8%	25.0%
<b>% of Hispanic or Latino (of Any Race)</b>	40.8%	23.5%

The share of Hudson County residents with a bachelor's degree or higher is 6.1 percentage points above the state.

### Educational Attainment (Population 25 Years and Older)

Indicator	Hudson County	New Jersey
High School or Equivalent Degree	20.2%	24.7%
Some College, No Degree	11.9%	14.5%
Associate's Degree	4.3%	6.6%
Bachelor's Degree or Higher	50.6%	44.5%
High School Degree or Higher	87.0%	90.3%

**Hudson County has a lower median household income and a higher poverty rate compared to New Jersey.**

### **Income & Poverty**

<b>Indicator</b>	<b>Hudson County</b>	<b>New Jersey</b>
<b>Median Household Income</b>	\$96,041	\$102,294
<b>% of Poverty</b>	15.1%	9.2%

*Note: Median Household Income in the Past 12 Months (in 2024 Inflation-Adjusted Dollars)*

**Hudson County residents pay higher rent and have a lower homeownership rate compared to the state average.**

### Housing Characteristics

<b>Indicator</b>	<b>Hudson County</b>	<b>New Jersey</b>
<b>Total Households</b>	306,647	3,543,944
<b>Median Gross Rent</b>	\$1,998	\$1,800
<b>Homeownership Rate</b>	29.4%	63.9%
<b>% of Housing Value of Owner Occupied (≥\$300,000)</b>	87.8%	80.7%

**Hudson County residents are more likely to use public transportation and work from home than the state average.**

**Commuting Characteristics**

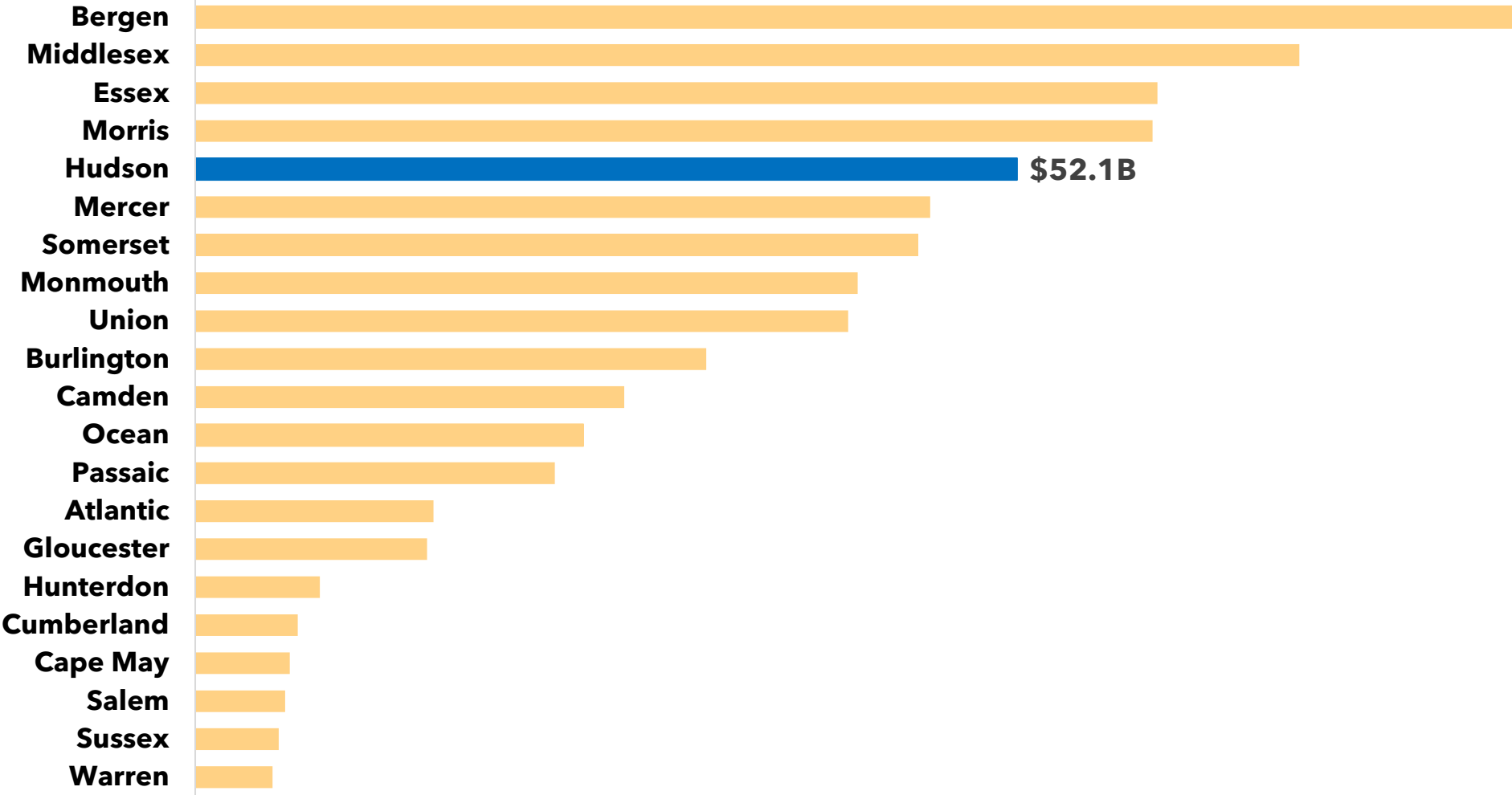
<b>Indicator</b>	<b>Hudson County</b>	<b>New Jersey</b>
<b>Average Travel Time to Work (in Minutes)</b>	37.1	31.9
<b>% of Public Transportation</b>	39.2%	9.7%
<b>% of Working From Home</b>	15.2%	13.5%

An abstract geometric composition on the left side of the page. It features a dark purple triangle in the top-left corner with a white circle. Below it is a grey semi-circle. To the right of the semi-circle is a pink area with diagonal lines. Further right is a solid blue square. Below the semi-circle is a grey triangle. At the bottom left, there are several overlapping geometric shapes: a pink square with a white line pattern, a grey triangle, a dark purple triangle, and a bright pink square. The word "ECONOMY" is centered in the white space to the right of these shapes.

# ECONOMY

In 2024, Hudson County's real GDP was \$52.1 billion, ranking 5<sup>th</sup> among all New Jersey counties.

### Real Gross Domestic Product (GDP) by County in New Jersey, 2024



Source: U.S. Bureau of Economic Analysis, "[CAGDP1 County and MSA gross domestic product \(GDP\) summary](#)" (accessed Wednesday, November 28, 2025).



# Establishments and Employment

## Hudson County

Source: Quarterly Census of Employment and Wages (QCEW) program, 2024

The QCEW program produces quarterly and annual data on the number of establishments, total employment, and wages for workers covered by New Jersey unemployment insurance (UI) laws, as well as federal employees under the Unemployment Compensation for Federal Employees (UCFE) program. This data is published at various geographical and industry levels.

## 25.7% of Hudson County establishments are in health care and social assistance.

### Hudson County Establishments, Ranked by Percent of the Total Establishments Private Sector

Industry	Total Number of Establishments	Total Number of Employees	% of Total Establishments
Health care and social assistance	4,895	33,130	25.7%
Retail trade	1,949	24,366	10.3%
Professional and technical services	1,949	14,707	10.3%
Accommodation and food services	1,642	20,678	8.6%
Other services	1,594	7,579	8.4%
Administrative and waste services	856	16,195	4.5%
Transportation and warehousing	823	22,994	4.3%
Construction	729	4,449	3.8%
Wholesale trade	720	13,345	3.8%
Real estate and rental and leasing	695	5,355	3.7%
Finance and insurance	691	38,795	3.6%
Information	480	6,834	2.5%
Manufacturing	404	9,793	2.1%
Arts, entertainment, and recreation	252	5,077	1.3%
Educational services	206	4,733	1.1%

Note: Full list of establishments in Monmouth County is available in [Appendix](#).

In Hudson County, finance and insurance has a higher employment share compared to the state.

**Private Employment  
Hudson County vs. New Jersey, 2024**

Industry	Hudson County		New Jersey		Difference between
	Employment	% of Total	Employment	% of Total	
Construction	4,449	1.9%	164,014	4.5%	-2.6%
Manufacturing	9,793	4.2%	253,054	6.9%	-2.7%
Wholesale Trade	13,345	5.7%	213,549	5.8%	-0.1%
Retail Trade	24,366	10.4%	427,521	11.6%	-1.2%
Transportation and Warehousing	22,994	9.8%	233,943	6.4%	3.4%
Information	6,834	2.9%	76,199	2.1%	0.8%
Finance and Insurance	38,795	16.5%	189,987	5.2%	11.4%
Real Estate and Rental and Leasing	5,355	2.3%	63,263	1.7%	0.6%
Professional and Technical Services	14,707	6.3%	336,105	9.1%	-2.9%
Management of Companies and Enterprises	4,387	1.9%	82,588	2.2%	-0.4%
Administrative and Waste Services	16,195	6.9%	286,750	7.8%	-0.9%
Educational services	4,733	2.0%	90,018	2.4%	-0.4%
Health Care and Social Assistance	33,130	14.1%	656,356	17.8%	-3.7%
Arts, Entertainment and Recreation	5,077	2.2%	73,699	2.0%	0.2%
Accommodation and Food Services	20,678	8.8%	328,905	8.9%	-0.1%

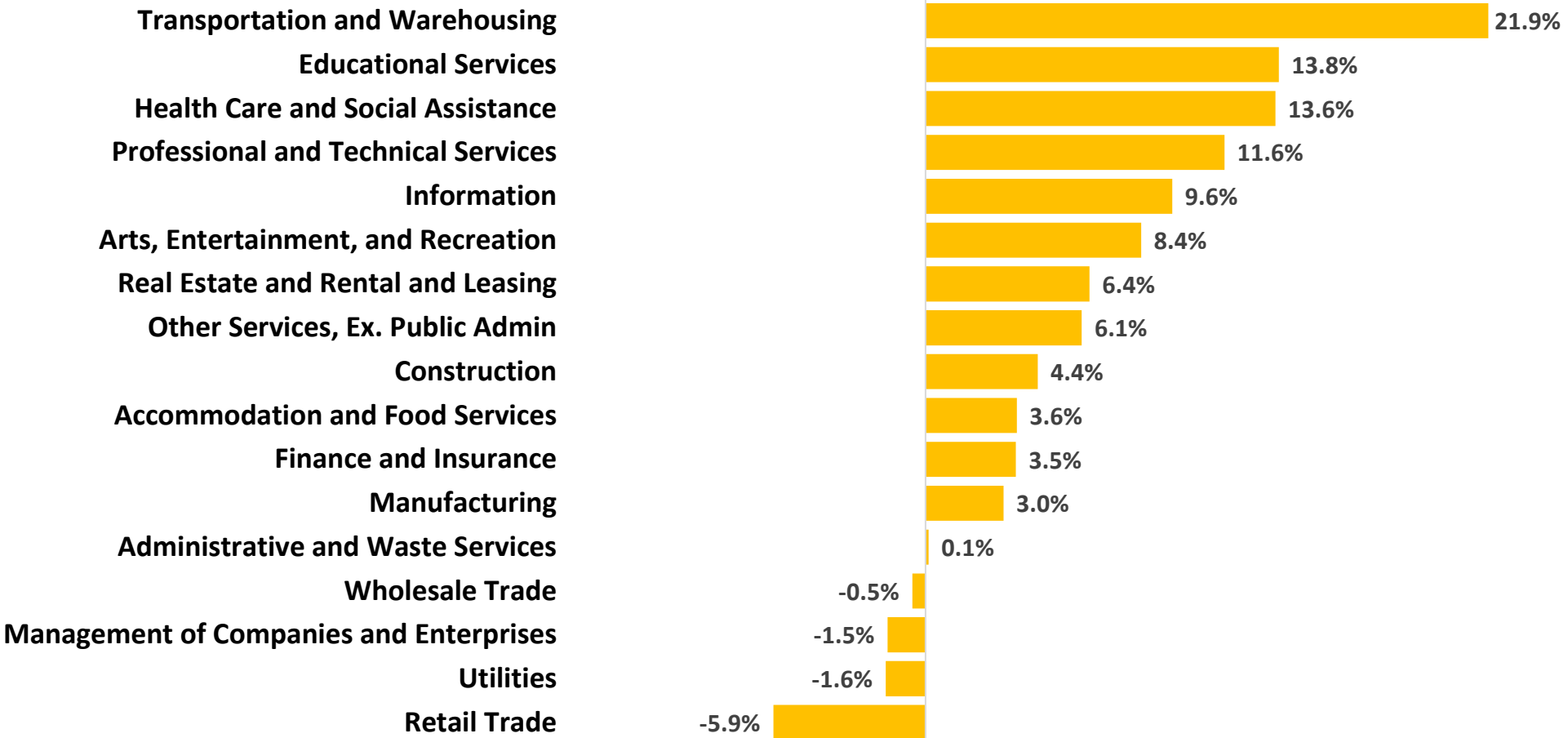
Between 2018 and 2024, arts, entertainment, and recreation saw the largest employment growth in Hudson County, increasing by 64.4%.

**Percent Change in Employment by Industry**  
Hudson County, 2018-2024 (ranked by percentage change in employment)



# Transportation and warehousing saw strong growth in New Jersey, expanding by 21.9% from 2018 to 2024.

**Percent Change in Employment by Industry**  
New Jersey, 2018-2024 (ranked by percentage change in employment)





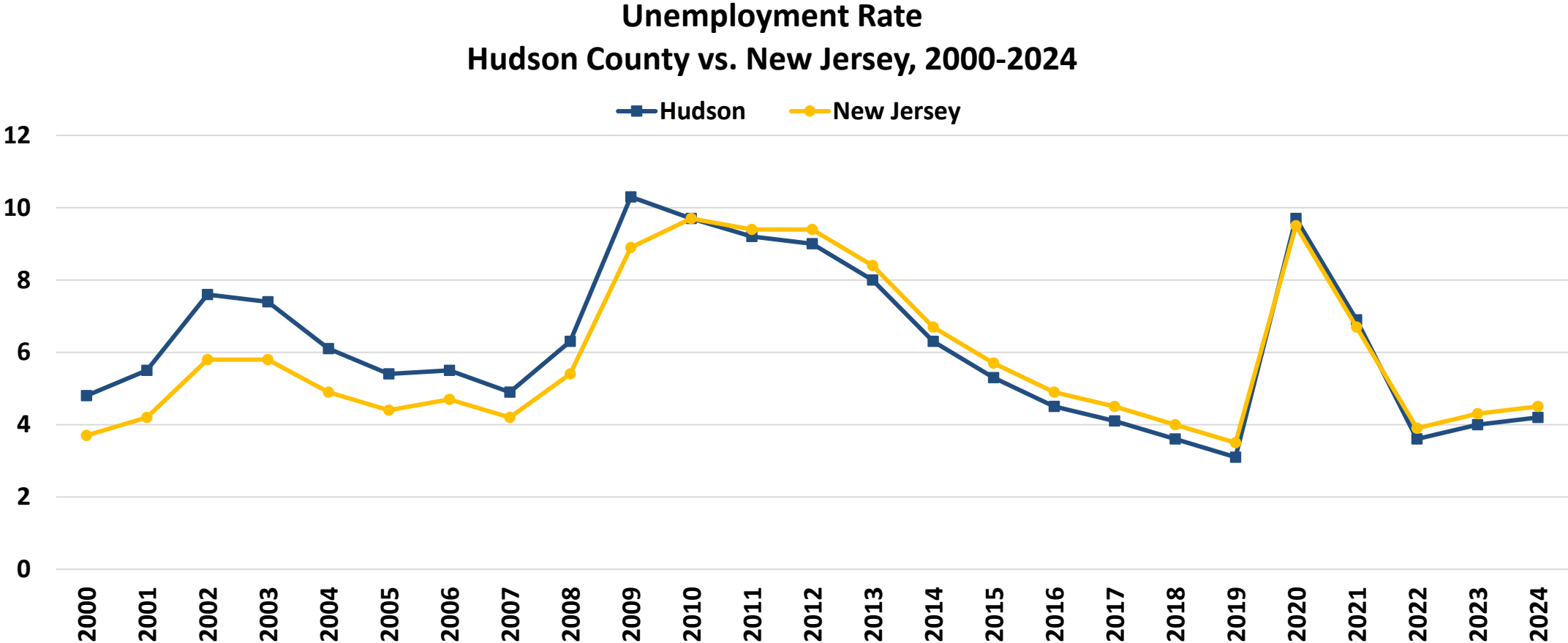
# Unemployment Trend

## Hudson County vs. New Jersey

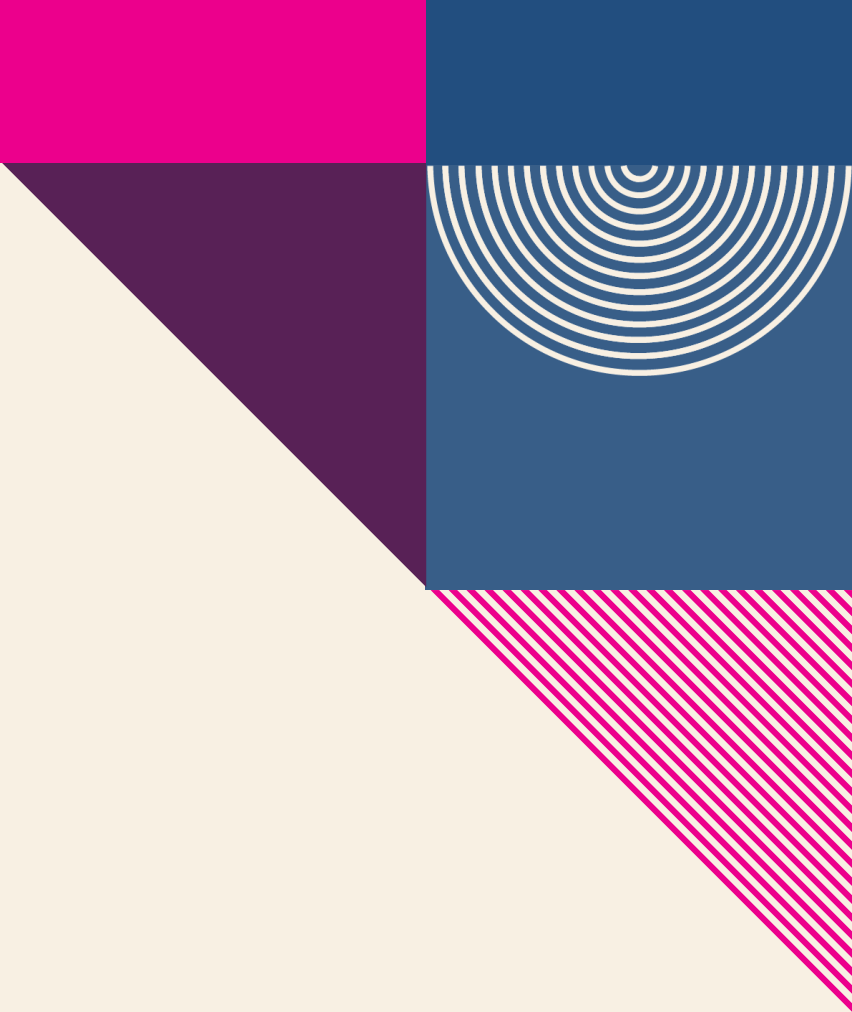
Source: Local Area Unemployment Statistics (LAUS), 2024

The Local Area Unemployment Statistics (LAUS) program produces monthly and annual employment, unemployment, and labor force data for Census regions and divisions, States, counties, metropolitan areas, and many cities, by place of residence.

# The unemployment rate in Hudson County closely follows state trends.



Source: ORI-EDR, Local Area Unemployment Statistics (LAUS) program, 2024



# Occupational Employment and Wages

## Hudson County vs. New Jersey

Source: 2024 National Occupational Employment and Wage Estimates (OEWS)

The Occupational Employment and Wage Statistics (OEWS) program produces employment, and wage estimates annually for approximately 830 occupations. These estimates are available for the nation, for individual states, and for metropolitan and nonmetropolitan areas; national occupational estimates for specific industries are also available.

## 21.9% of Hudson County's total employment is concentrated in the top 10 occupations.

### Top 10 Occupations, Ranked by Employment Hudson County, 2024

Occupation	Employment	% of Total Employment	Median Hourly Wage
Laborers and Freight, Stock, and Material Movers, Hand	8,740	3.2%	\$19.04
Home Health and Personal Care Aides	8,170	3.0%	\$15.83
Cashiers	6,190	2.3%	\$16.58
Software Developers	6,180	2.3%	\$78.93
Heavy and Tractor-Trailer Truck Drivers	5,830	2.1%	\$32.18
Fast Food and Counter Workers	5,500	2.0%	\$16.05
Stockers and Order Fillers	4,980	1.8%	\$19.15
Retail Salespersons	4,960	1.8%	\$17.62
Customer Service Representatives	4,830	1.8%	\$23.27
Computer and Information Systems Managers	4,620	1.7%	\$102.50
<b>Top 10 Occupations, Total</b>	<b>60,000</b>	<b>21.9%</b>	
<b>All Occupations, Total</b>	<b>274,040</b>	<b>100.0%</b>	<b>\$29.22</b>

Note: OEWS collects the data for 2024.

## In New Jersey, the top 10 occupations account for 20.1% of total employment.

### Top 10 Occupations, Ranked by Employment New Jersey, 2024

Occupation	Employment	% of Total Employment	Median Hourly Wage
Home Health and Personal Care Aides	105,460	2.5%	\$17.83
Laborers and Freight, Stock, and Material Movers	101,720	2.4%	\$18.78
Registered Nurses	95,150	2.2%	\$49.39
Cashiers	93,270	2.2%	\$15.96
Retail Salespersons	87,760	2.1%	\$17.13
Fast Food and Counter Workers	86,980	2.0%	\$16.01
Packers and Packagers, Hand	76,060	1.8%	\$20.56
Office Clerks, General	71,140	1.7%	\$23.07
Stockers and Order Fillers	70,780	1.7%	\$17.69
Janitors and Cleaners	67,590	1.6%	\$17.94
<b>Top 10 Occupations, Total</b>	<b>855,910</b>	<b>20.1%</b>	
<b>All Occupations, Total</b>	<b>4,250,430</b>	<b>100.0%</b>	<b>\$27.51</b>

Note: OEWS collects the data for 2024.

**Between 2022 and 2032 in Hudson County, transportation and material moving and the management occupational groups are projected to see the largest growth (+2,500 each).**

**Actual and Projected Employment by Occupation Group, Hudson County  
Top 10 Occupation groups ranked by 2032 Employment Projections**

<b>Occupational Group</b>	<b>2022 Actual</b>	<b>2032 Projected</b>	<b>Net Change</b>	<b>Percent Change</b>
<b>Office and Administrative Support</b>	51,100	48,750	-2,350	-4.5%
<b>Transportation and Material Moving</b>	36,350	38,850	2,500	6.9%
<b>Sales and Related</b>	30,950	31,550	600	2.0%
<b>Business and Financial Operations</b>	27,850	30,200	2,350	8.4%
<b>Management</b>	24,750	27,250	2,500	10.1%
<b>Educational Instruction and Library</b>	18,200	18,900	700	3.9%
<b>Food Preparation and Serving Related</b>	17,300	18,600	1,300	7.5%
<b>Computer and Mathematical</b>	13,750	15,850	2,100	15.2%
<b>Healthcare Practitioners and Technical</b>	12,050	13,000	950	7.9%
<b>Healthcare Support</b>	9,950	11,650	1,700	17.0%

*Note:* Employment data for Top 15 occupational groups is available in the [Appendix](#).



# **JOB POSTINGS**



# Job Postings

## Hudson County vs. New Jersey

Source: Lightcast

Lightcast collect raw data on postings from more than 160,000 online sources, then synthesize and interpret those findings to provide meaningful insight in near real time. Job posting analytics can identify supply and demand for workers, skills, and jobs all over the world, as well as important contextual details like compensation trends.

Limitations: One job posting does not necessarily equal one actual job opening. Some companies may post jobs to signal growth to investors or advertise positions in multiple states. Additionally, a decline in job postings doesn't always indicate reduced demand; it could simply mean that companies have already filled their positions and are no longer actively recruiting. We treat this data as directional, offering insights into employer demand rather than exact measurements.



## Top 5 Hiring Companies Hudson County, 2024

- JPMorgan Chase
- RWJBarnabas Health
- Walmart
- Genesis10
- BCforward

## Top 5 Occupations Hudson County, 2024

- Software Developers
- Registered Nurses
- Computer Occupations, All Other
- Data Scientists
- Retail Salespersons



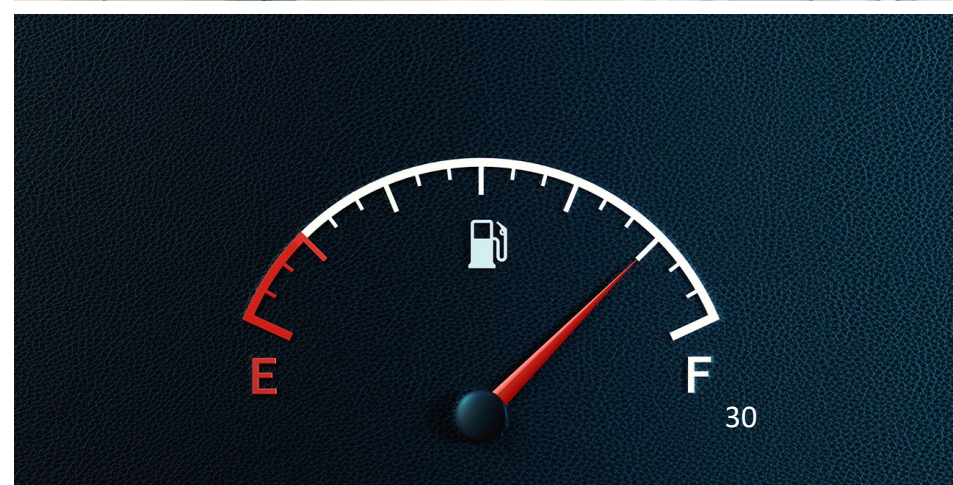
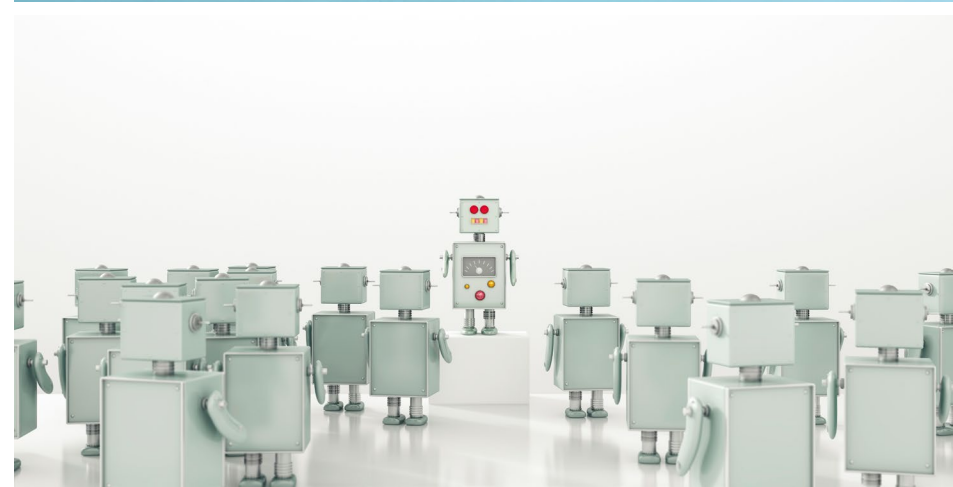


## **Top 5 Specialized Skills Hudson County, 2024**

- **Project Management**
- **Agile Methodology**
- **Programming Language (e.g., SQL and Python)**
- **Marketing**
- **Computer Science**

## Top 5 Software Skills Hudson County, 2024

- **Microsoft Office (e.g., Excel, and PowerPoint)**
- **Programming Language (e.g., SQL, Python, and Java)**
- **Amazon Web Services**
- **JIRA**
- **Tableau (Business Intelligence Software)**

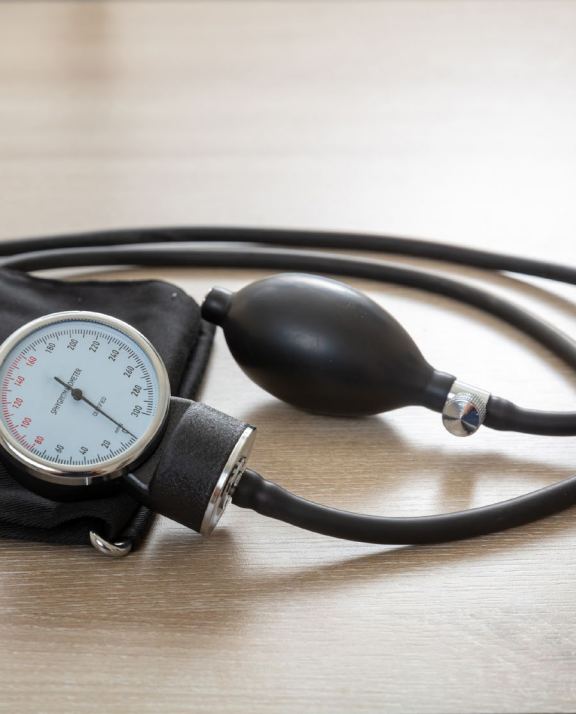




## Top 5 Soft Skills Hudson County, 2024

- **Communication**
- **Management**
- **Customer Service**
- **Operations**
- **Problem solving**





## **Top 5 Certificates Hudson County, 2024**

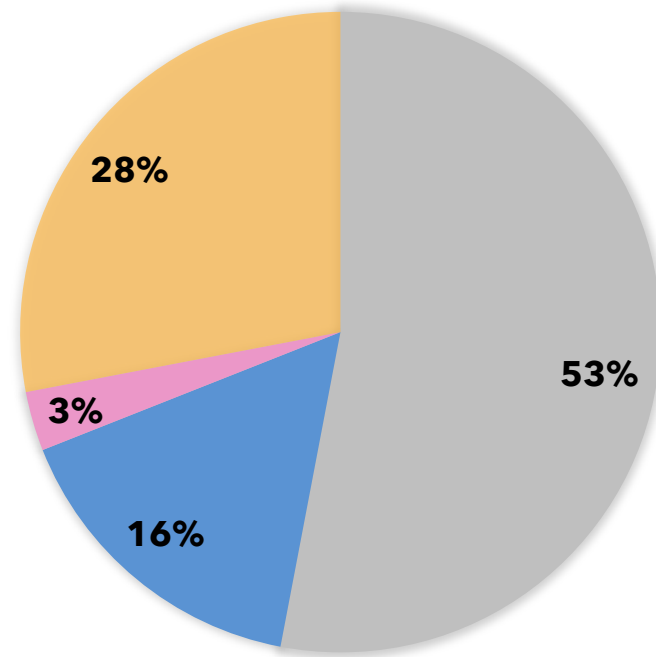
- **Valid Driver's License**
- **Registered Nurse (RN)**
- **Basic Life Support (BLS) Certification**
- **Cardiopulmonary Resuscitation (CPR) Certification**
- **Master Of Business Administration (MBA)**



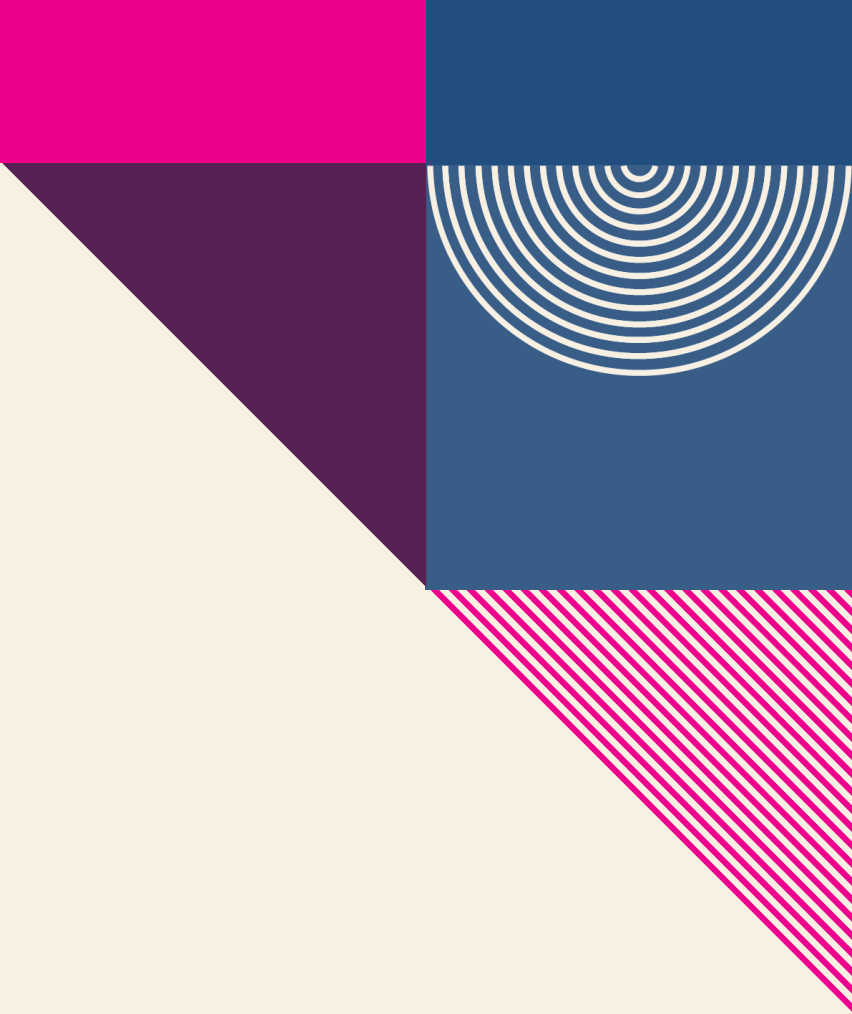
**28% of job postings in Hudson County require a bachelor's degree or higher.**

### Job Postings by Educational Attainment Hudson County, 2024

■ No education listed ■ High school or GED ■ Associate's degree ■ Bachelor's degree or higher



*Note:* Bachelor's degree or higher includes Bachelor's Degree, Master, Ph.D. or Professional Degree. While 53% of job postings did not specify educational attainment, this does not necessarily mean there are no requirements for it.



# AI-related Job Postings

## Hudson County vs. New Jersey

Source: Lightcast

To identify AI-related job postings, ORI-EDR compiled a curated list of 130 specific terms. A job listing is deemed AI-related if any of these terms appear in the skills section. A job listing is classified as AI-related if any of these terms are present in the skills section. This includes, but is not limited to, terms such as "AI/ML Inference," "Conversational AI," "Machine Learning Algorithms," "Supervised Learning," and "Deep Learning."

Limitations: One job posting does not necessarily equal one actual job opening. Some companies may post jobs to signal growth to investors or advertise positions in multiple states. Additionally, a decline in job postings doesn't always indicate reduced demand; it could simply mean that companies have already filled their positions and are no longer actively recruiting. We treat this data as directional, offering insights into employer demand rather than exact measurements.

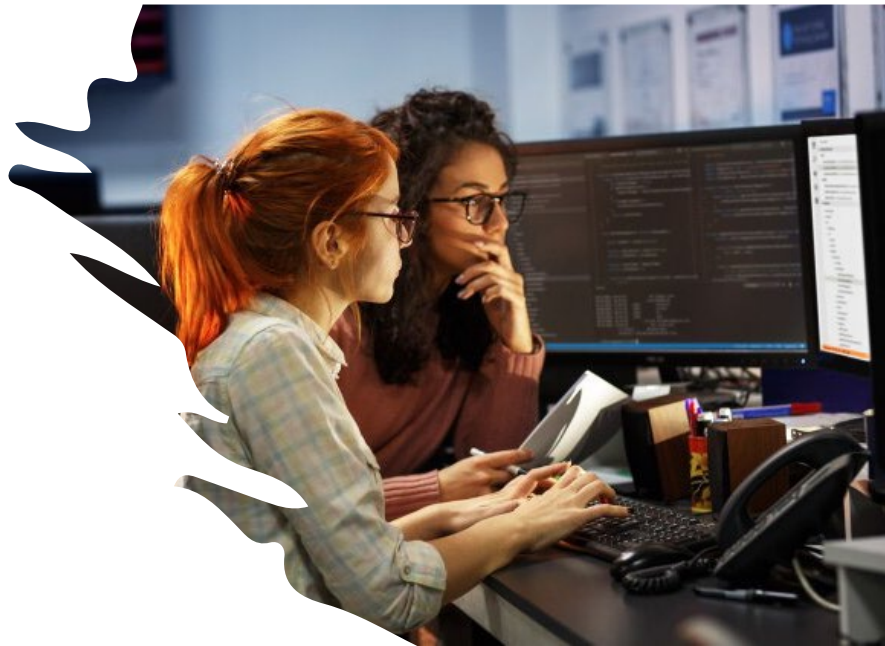
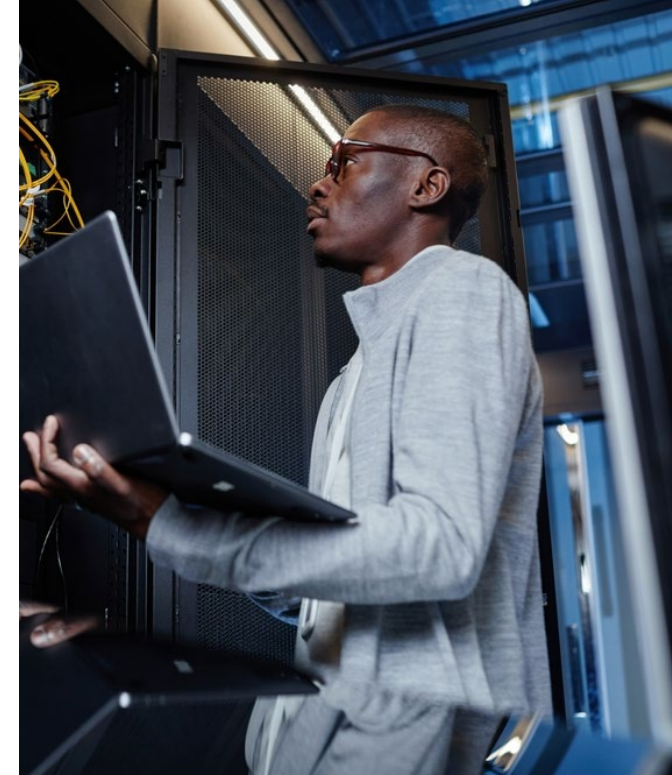


## Top 5 AI-related Hiring Companies Hudson County, 2024

- JPMorgan Chase
- Walmart
- Genesis10
- BCforward
- Ernst & Young

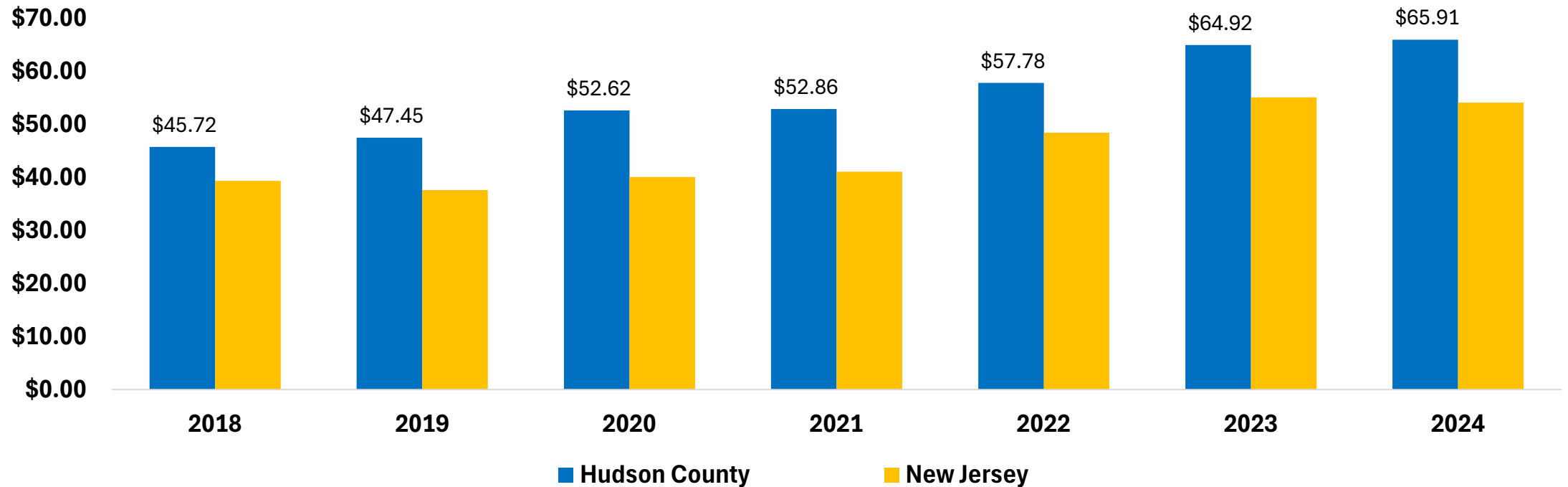
# Top 5 AI-related Occupations Hudson County, 2024

- Software Developers
- Computer Occupations, All Other
- Data Scientists
- Project Management Specialists
- Management Analyst



In Hudson County, the median hourly wage for AI-related job postings is higher than the state.

Median Hourly Wage in AI-related Job Postings, Hudson County vs. New Jersey, 2018-2024





# TAKEAWAYS



- **Key Economic and Workforce Insights: Hudson County**
  - **Demographics**
    - Hudson County's population is younger and more diverse than New Jersey.
    - The proportion of Hudson County residents with a bachelor's degree or higher is 6.1 percentage points above the state.

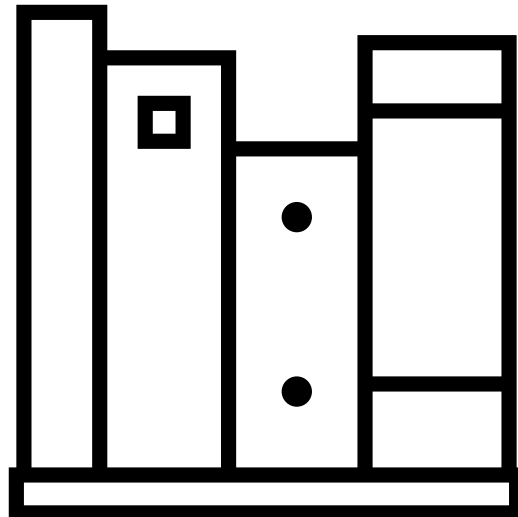


- **Key Economic and Workforce Insights: Hudson County (Continued)**

- **Industry Composition**

- 25.7% of business establishments are in health care and social assistance.
- Finance and insurance has a higher employment share in Hudson County compared to the state.

# 2025 Report Overview and Subscription Information



This report was prepared by the Office of Research and Information, Division of Economic & Demographic Research. This division collects and disseminates vital data on employers, employees, and population demographics.

# 2025-2026 NJDOL PUBLICATIONS

- [Real-Time Insights: Analysis of Job Posting Data in New Jersey for 2025](#) (January 2026)
- [Identifying and Tracking Emerging Occupations in New Jersey's Key Sectors](#) (January 2026)
- [New Jersey's Manufacturing Sector](#) (Winter 2025)
- [County Brief: Labor Market Facts](#) (December 2025)
- [Labor Market Spotlight - Celebrating New Jersey's Veterans](#) (Issue No. 28, Volume 3: November 2025)
- [Labor Market Spotlight - New Jersey's Waterways Help Keep the Economy Flowing](#) (Issue No. 27, Volume 3: October 2025)
- [New Jersey Employment Situation](#) (September 2025)
- [Job Openings and Labor Turnover Survey \(JOLTS\)](#) (August 2025)
- [New Jersey Building Permits](#) (August 2025)
- [New Jersey's Life Sciences Sector](#) (Fall 2025)
- [Labor Market Spotlight - The Industries Powering New Jersey's Special Moments](#) (Issue No. 26, Volume 3: August 2025)
- [New Jersey's Health Care Sector](#) (June 2025)
- [New Jersey Business Employment Dynamics](#) (May 2025)
- [Survey of Occupational Injuries and Illnesses \(SOII\)](#) (April 2025)
- [Labor Market Spotlight - Fortune 500 Companies](#) (Issue No. 25, Volume 3: March 2025)
- [Labor Market Spotlight - Young Adult Workforce](#) (Issue No. 24, Volume 3: January 2025)

# JOIN OUR LIST

Link: [nj.gov/labor/subscribetoori](https://nj.gov/labor/subscribetoori)





**THANK YOU!**



# APPENDIX

## Hudson County Establishments, Ranked by Percent of the Total Establishments Private Sector

Industry	Total Number of Establishments	Total Number of Employees	% of Total Establishments
Health care and social assistance	4,895	33,130	25.7%
Retail trade	1,949	24,366	10.3%
Professional and technical services	1,949	14,707	10.3%
Accommodation and food services	1,642	20,678	8.6%
Other services, except public administration	1,594	7,579	8.4%
Unclassified	1,010	1,186	5.3%
Administrative and waste services	856	16,195	4.5%
Transportation and warehousing	823	22,994	4.3%
Construction	729	4,449	3.8%
Wholesale trade	720	13,345	3.8%
Real estate and rental and leasing	695	5,355	3.7%
Finance and insurance	691	38,795	3.6%
Information	480	6,834	2.5%
Manufacturing	404	9,793	2.1%
Arts, entertainment, and recreation	252	5,077	1.3%
Educational services	206	4,733	1.1%
Management of companies and enterprises	96	4,387	0.5%
<b>Total</b>	<b>19,012</b>	<b>234,857</b>	<b>100.0%</b>

\*Source: ORI-EDR,QCEW,2024

\*\* Data are suppressed

*Note:* An establishment is considered unknown when there is insufficient detail to accurately determine its primary industry at that location. It will be assigned an industry code once the program can verify its main business activity.

**Actual and Projected Employment by Occupation Group, Hudson County**  
**Top 15 Occupations ranked by 2032 Employment Projections**

<b>Occupational Group</b>	<b>2022 Actual</b>	<b>2032 Projected</b>	<b>Net Change</b>	<b>Percent Change</b>
<b>Office and Administrative Support</b>	51,100	48,750	-2,350	-4.5%
<b>Transportation and Material Moving</b>	36,350	38,850	2,500	6.9%
<b>Sales and Related</b>	30,950	31,550	600	2.0%
<b>Business and Financial Operations Management</b>	27,850	30,200	2,350	8.4%
<b>Management</b>	24,750	27,250	2,500	10.1%
<b>Educational Instruction and Library</b>	18,200	18,900	700	3.9%
<b>Food Preparation and Serving Related</b>	17,300	18,600	1,300	7.5%
<b>Computer and Mathematical</b>	13,750	15,850	2,100	15.2%
<b>Healthcare Practitioners and Technical</b>	12,050	13,000	950	7.9%
<b>Healthcare Support</b>	9,950	11,650	1,700	17.0%
<b>Installation, Maintenance, and Repair</b>	9,800	10,300	500	5.2%
<b>Building and Grounds Cleaning and Maintenance</b>	9,600	10,100	500	5.1%
<b>Personal Care and Service</b>	9,050	9,900	850	9.5%
<b>Production</b>	9,100	9,400	300	3.4%
<b>Protective Service</b>	8,450	8,350	-100	-1.1%