

Mercer County

Division of Economic and Demographic Research

Office of Research & Information

New Jersey Department of Labor and Workforce Development

February 2026

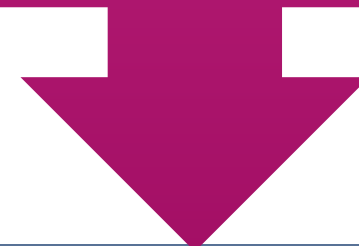


TABLE OF CONTENTS

Who Are We?	3
Purpose and Highlights	4
Demographic and Housing Characteristics	5
Economy	12
Job Postings	25
Takeaways	38
2025-2026 NJDOL Publications	42
Join Our List	43

**WHO ARE
WE?**

New Jersey Department of Labor
Office of Research and Information



Division of Economic and Demographic
Research

SDC

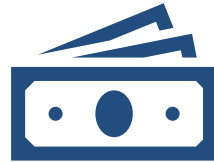
BLS

LMI

The purpose of this report is to highlight the key demographic and economic trends in the county



Mercer County has a **lower median age and a greater share of foreign-born residents** than New Jersey.



Mercer County's real GDP ranks 6th among all New Jersey counties.



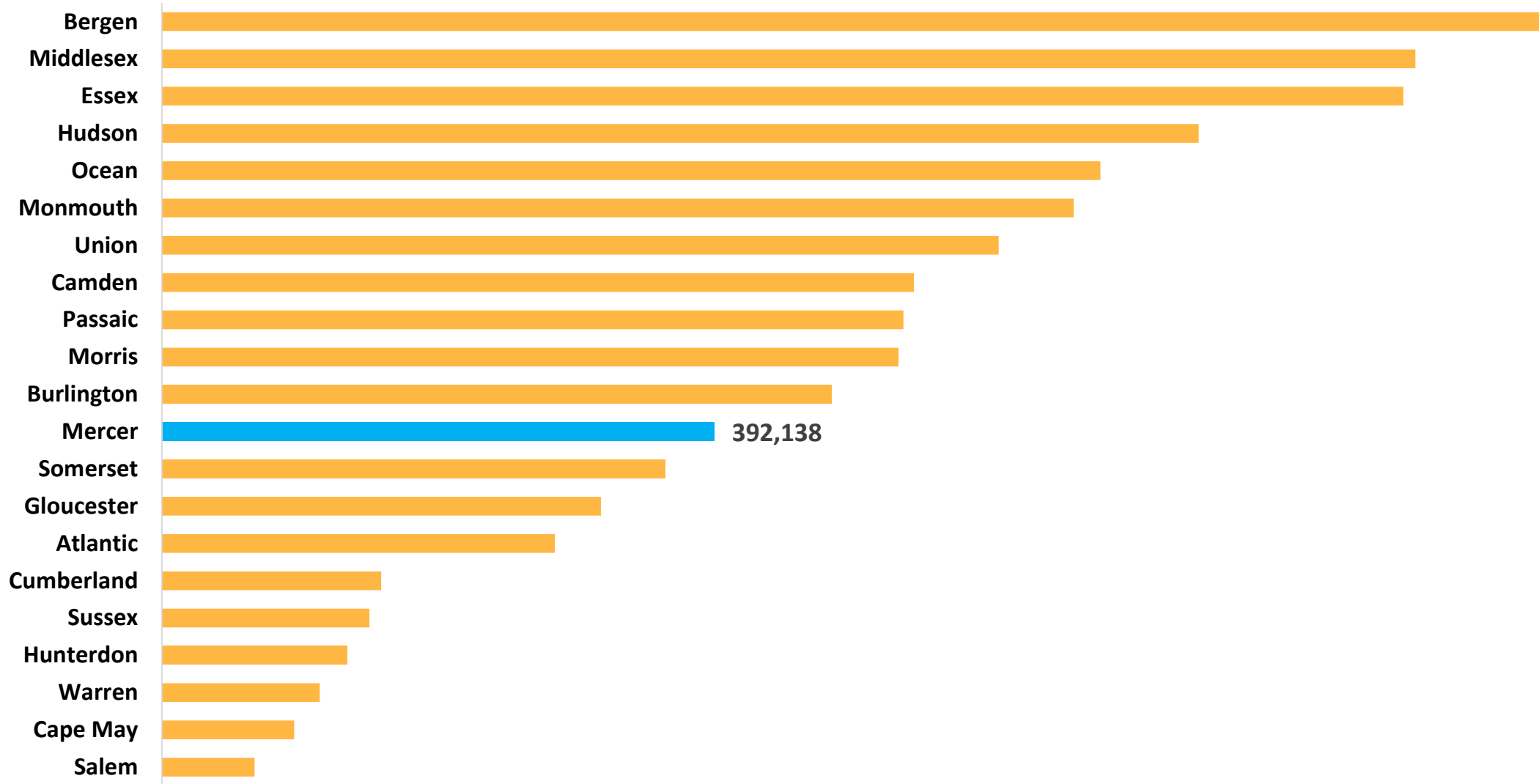
The top occupations in demand include Registered Nurses, Software Developers, and Retail Salespersons.



DEMOGRAPHIC AND HOUSING CHARACTERISTICS

Mercer County's population was 392,138 in 2024.

Population Estimates by County in New Jersey, 2024



Mercer County has a lower median age and a greater share of foreign-born residents than New Jersey.

Demographic Characteristics

Indicator	Mercer County	New Jersey
Median Age	39.7	40.4
% of Older Population (65+)	16.6%	18.0%
% of Language Other Than English Spoken at Home	34.8%	34.3%
% of Foreign-Born Population	28.6%	25.0%
% of Hispanic or Latino (of Any Race)	24.6%	23.5%

The share of Mercer County residents with a bachelor's degree or higher is 2.8 percentage points above the state.

Educational Attainment (Population 25 Years and Older)

Indicator	Mercer County	New Jersey
High School or Equivalent Degree	20.1%	24.7%
Some College, No Degree	14.2%	14.5%
Associate's Degree	5.7%	6.6%
Bachelor's Degree or Higher	47.3%	44.5%
High School Degree or Higher	87.3%	90.3%

Mercer County has a similar median household income and a slightly higher poverty rate compared to the state.

Income & Poverty

Indicator	Mercer County	New Jersey
Median Household Income	\$104,148	\$104,294
% of Poverty	10.0%	9.2%

Note: Median Household Income in the Past 12 Months (in 2023 Inflation-Adjusted Dollars)

Mercer County residents pay lower rent and have a lower homeownership rate compared to the state.

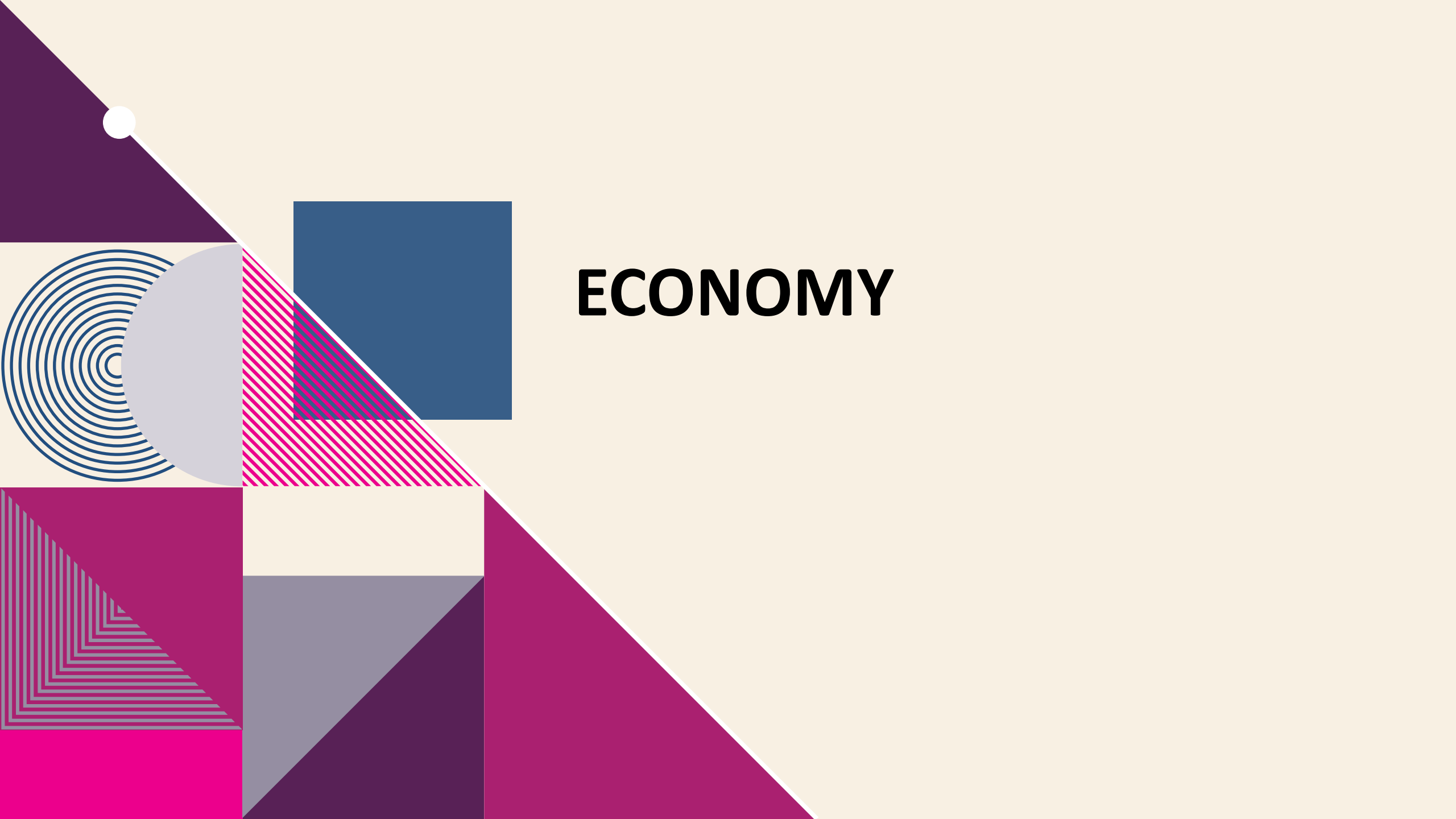
Housing Characteristics

Indicator	Mercer County	New Jersey
Total Households	148,168	3,543,944
Median Gross Rent	\$1,744	\$1,800
Homeownership Rate	62.4%	63.9%
% of Housing Value of Owner Occupied (\geq\$300,000)	72.7%	80.7%

Mercer County residents have shorter commute times, and a higher percentage of remote workers compared to the state average.

Commuting Characteristics

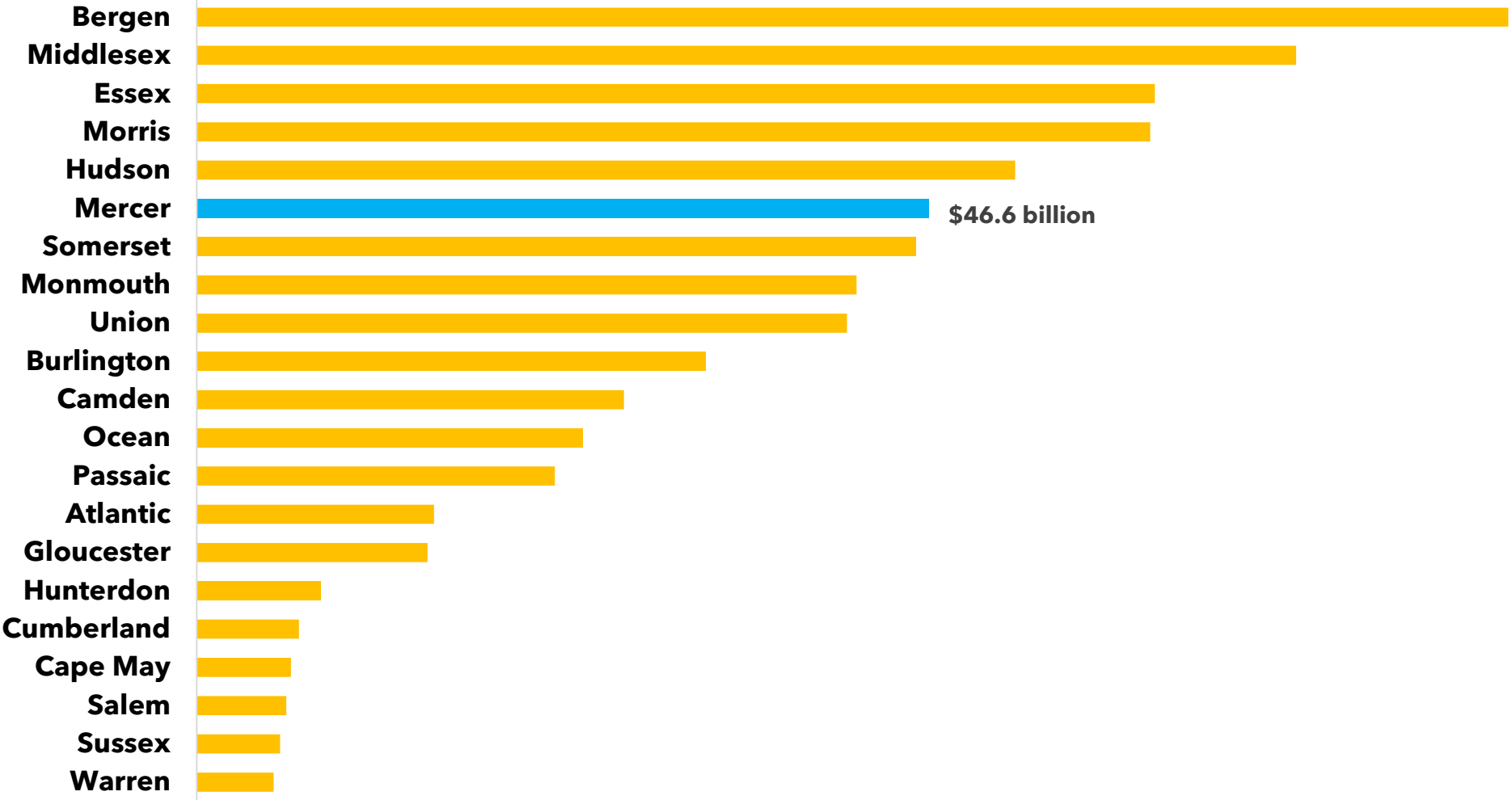
Indicator	Mercer County	New Jersey
Average Travel Time to Work (in Minutes)	27.4	31.9
% of Public Transportation	4.5%	9.7%
% of Working From Home	14.8%	13.5%



ECONOMY

In 2024, Mercer County's real GDP was \$46.6 billion, ranking 6th among all New Jersey counties.

Real Gross Domestic Product (GDP) by County in New Jersey, 2024



Source: U.S. Bureau of Economic Analysis, "[CAGDP1 County and MSA gross domestic product \(GDP\) summary](#)" (accessed Wednesday, April 2, 2025).



Establishments and Employment

Mercer County

Source: Quarterly Census of Employment and Wages (QCEW) program, 2024 Annual Averages

The QCEW program produces quarterly and annual data on the number of establishments, total employment, and wages for workers covered by New Jersey unemployment insurance (UI) laws, as well as federal employees under the Unemployment Compensation for Federal Employees (UCFE) program. This data is published at various geographical and industry levels.

18.6% of Mercer County establishments are in health care and social assistance.

Mercer County Establishments, Ranked by Percent of the Total Establishments Private Ownerships

Industry	Total Number of Establishments	Total Number of Employees	% of Total Establishments
Health care and social assistance	2,125	28,739	18.6%
Professional and technical services	1,787	24,585	15.6%
Other services, except public administration	1,148	7,237	10.1%
Retail trade	1,121	18,519	9.8%
Accommodation and food services	835	12,699	7.3%
Administrative and waste services	733	16,378	6.4%
Construction	651	5,685	5.7%
Finance and insurance	547	14,699	4.8%
Unclassified	528	615	4.6%
Wholesale trade	390	6,896	3.4%
Manufacturing	327	10,064	2.9%
Real estate and rental and leasing	298	2,549	2.6%
Educational services	244	15,734	2.1%
Information	205	3,054	1.8%
Transportation and warehousing	201	11,138	1.8%

Note: Full list of establishments in Mercer County is available in [Appendix](#).

In Mercer County, professional and technical services and finance and insurance have higher employment shares compared to state averages.

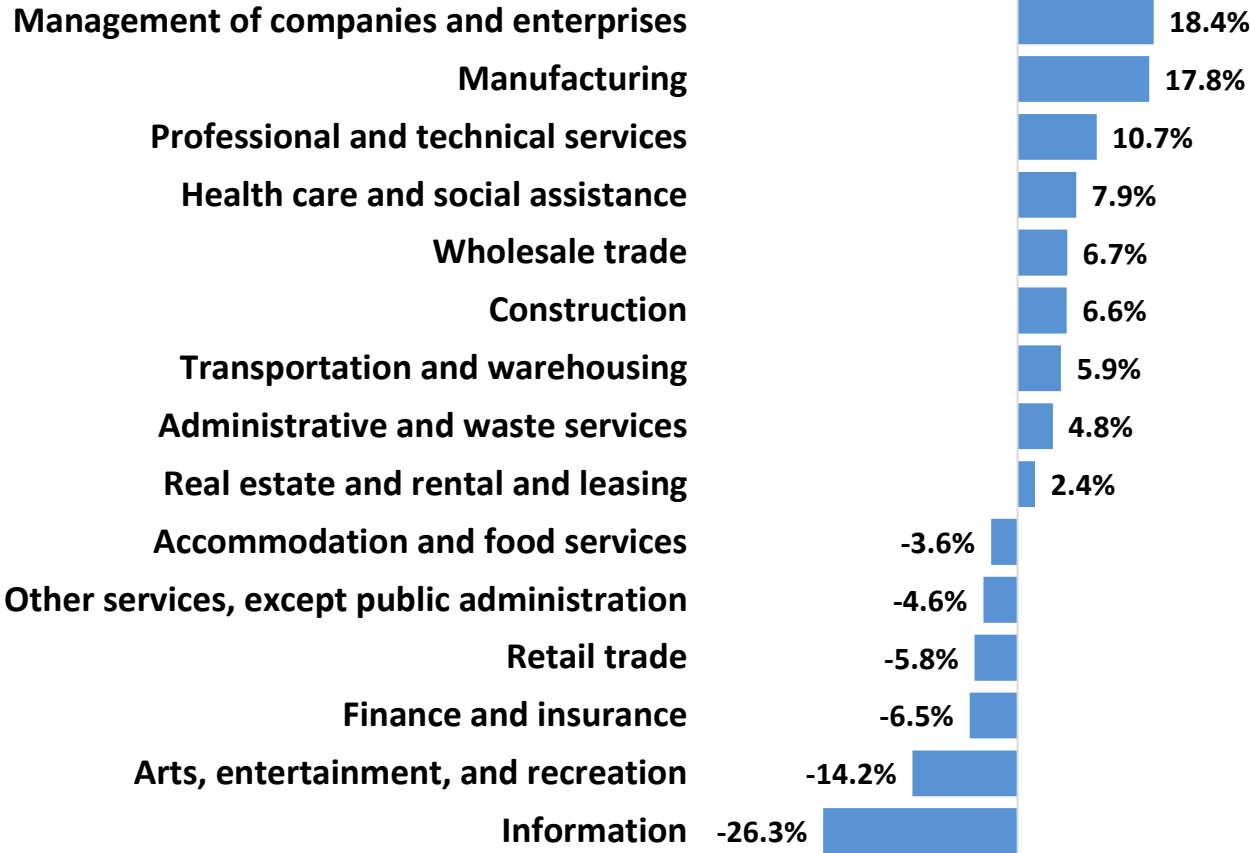
Employment by Private Industry Mercer County vs. New Jersey, 2024

Industry	Mercer County		New Jersey		Difference between
	Employment	% of Total	Employment	% of Total	
Construction	5,685	3.0%	164,014	4.5%	-1.4%
Manufacturing	10,064	5.4%	253,054	6.9%	-1.5%
Wholesale trade	6,896	3.7%	213,549	5.8%	-2.1%
Retail trade	18,519	9.9%	427,521	11.6%	-1.7%
Transportation and warehousing	11,138	6.0%	233,943	6.4%	-0.4%
Information	3,054	1.6%	76,199	2.1%	-0.4%
Finance and insurance	14,699	7.9%	189,987	5.2%	2.7%
Real estate and rental and leasing	2,549	1.4%	63,263	1.7%	-0.4%
Professional and technical services	24,585	13.2%	336,105	9.1%	4.0%
Management of companies and enterprises	4,929	2.6%	82,588	2.2%	0.4%
Administrative and waste services	16,378	8.8%	286,750	7.8%	1.0%
Health care and social assistance	28,739	15.4%	656,356	17.8%	-2.4%
Arts, entertainment, and recreation	2,191	1.2%	73,699	2.0%	-0.8%
Accommodation and food services	12,699	6.8%	328,905	8.9%	-2.1%
Other services, except public administration	7,237	3.9%	144,086	3.9%	0.0%

Full list of employment by industry is available in [Appendix](#).

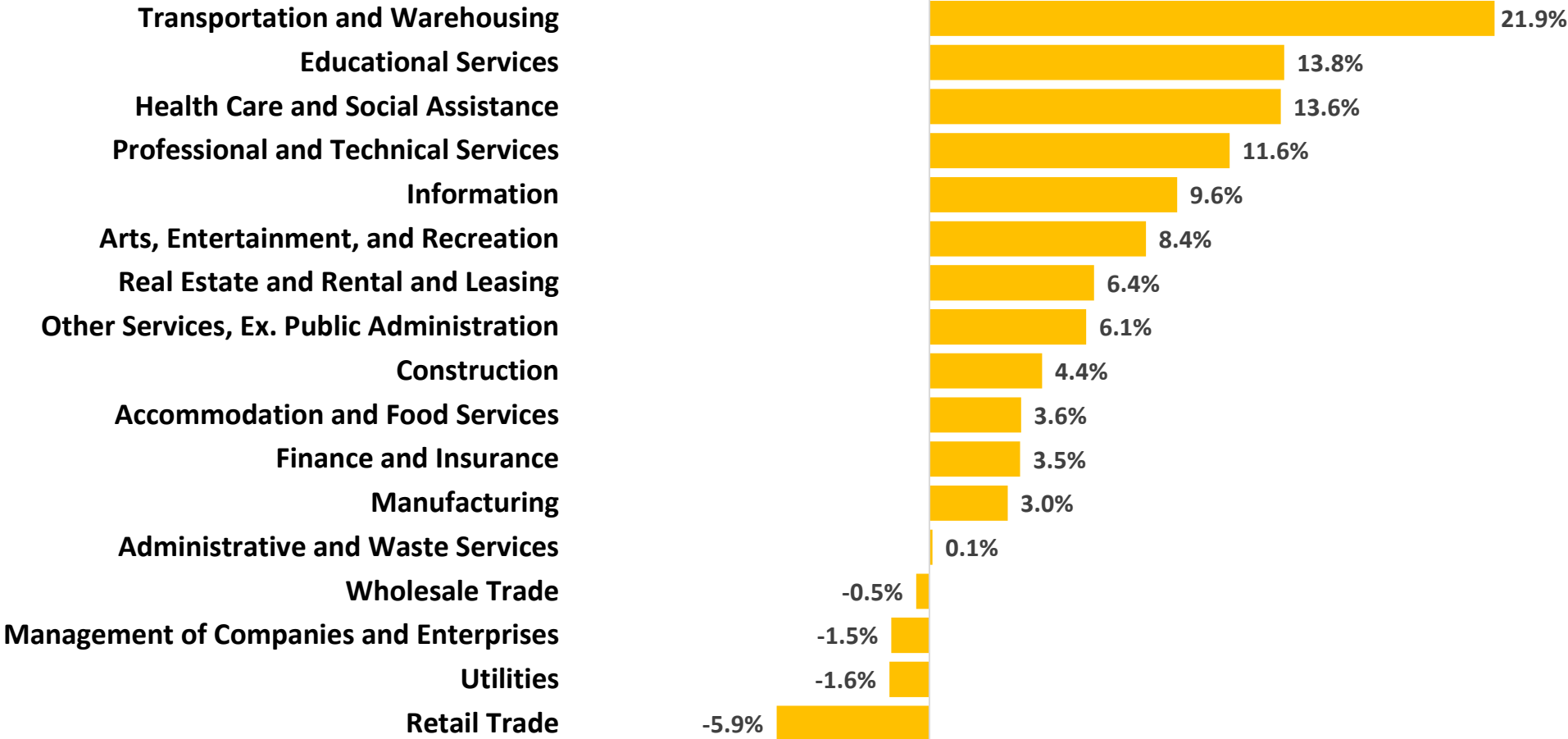
Between 2018 and 2024, management of companies and enterprises saw the largest employment growth in Mercer County, increasing by 18.4%.

Percent Change in Employment by Industry
Mercer County, 2018-2024 (ranked by percentage change in employment)



Transportation and warehousing saw strong growth in New Jersey, expanding by 21.9% from 2018 to 2024.

Percent Change in Employment by Industry
New Jersey, 2018-2024 (ranked by percentage change in employment)





Unemployment Trend

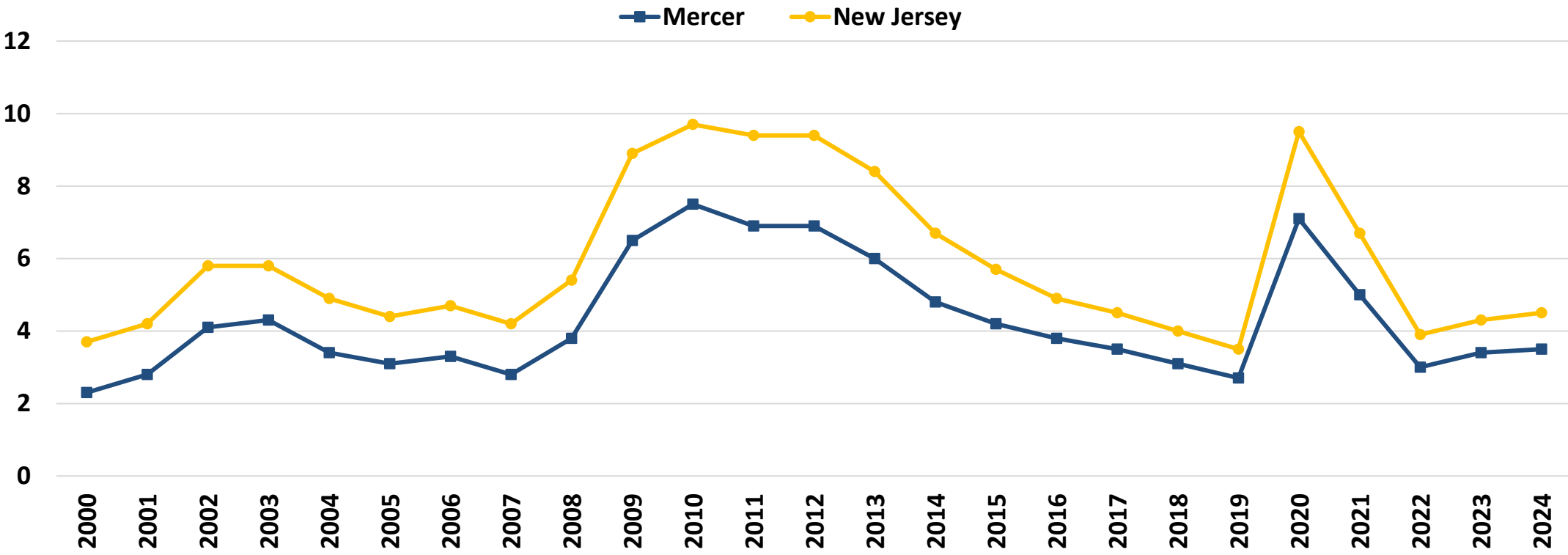
Mercer County vs. New Jersey

Source: Local Area Unemployment Statistics (LAUS), 2024

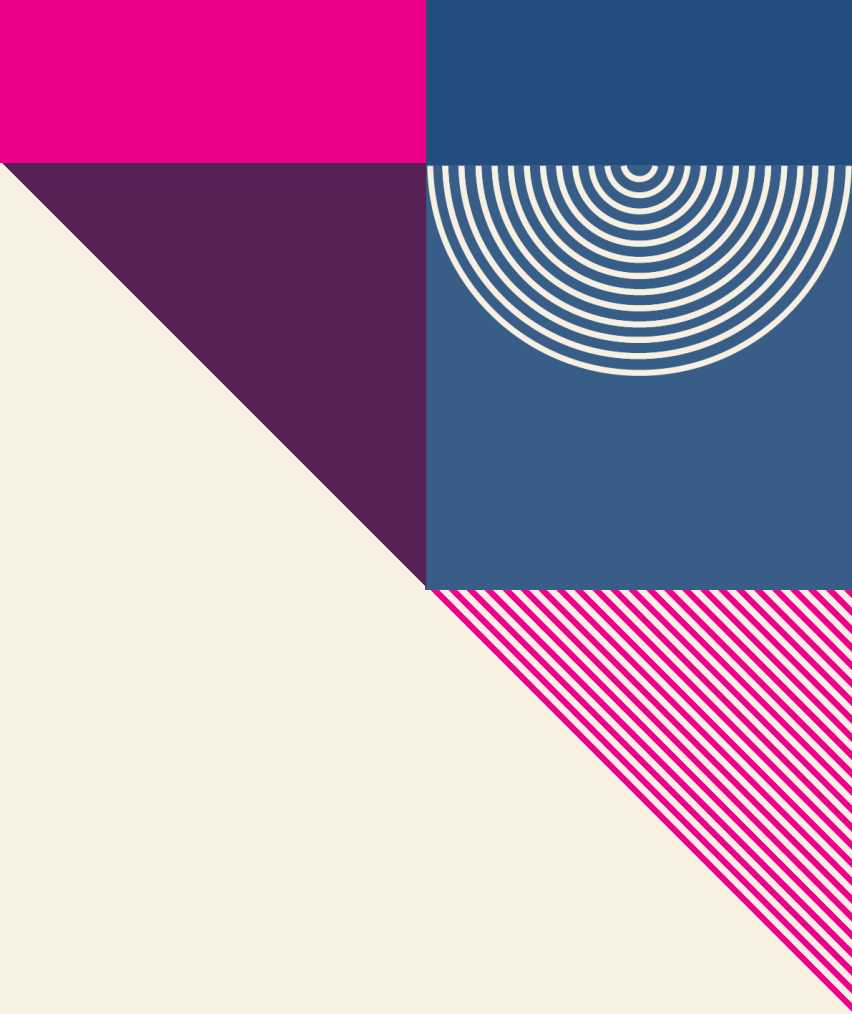
The Local Area Unemployment Statistics (LAUS) program produces monthly and annual employment, unemployment, and labor force data for Census regions and divisions, States, counties, metropolitan areas, and many cities, by place of residence.

The unemployment rate in Mercer County follows state trends but was slightly lower than the New Jersey average.

Unemployment Rate Mercer County vs. New Jersey, 2000-2024



Source: ORI-EDR, Local Area Unemployment Statistics (LAUS) program, 2024



Occupational Employment and Wages

Mercer County vs. New Jersey

Source: 2024 National Occupational Employment and Wage Estimates (OEWS)

The Occupational Employment and Wage Statistics (OEWS) program produces employment, and wage estimates annually for approximately 830 occupations. These estimates are available for the nation, for individual states, and for metropolitan and nonmetropolitan areas; national occupational estimates for specific industries are also available.

16.8% of Mercer County's total employment is concentrated in the top 10 occupations.

Top 10 Occupations, Ranked by Employment Mercer County, 2024

Occupation	Employment	% of Total Employment	Median Hourly Wage
Registered Nurses	5,330	2.2%	\$46.94
Home Health and Personal Care Aides	4,470	1.9%	\$17.75
Fast Food and Counter Workers	4,160	1.7%	\$16.16
Cashiers	4,140	1.7%	\$16.12
Software Developers	4,010	1.7%	\$60.97
Laborers of Freight and Stock	3,800	1.6%	\$18.13
Secretaries and Administrative Assistants	3,680	1.5%	\$24.85
Customer Service Representatives	3,630	1.5%	\$22.09
Retail Salespersons	3,570	1.5%	\$16.93
Janitors and Cleaners	3,470	1.5%	\$17.71
Top 10 Occupations, Total	40,260	16.8%	
All Occupations, Total	239,220	100.0%	\$30.10

Note: OEWS collects the data for 2024.

In New Jersey, the top 10 occupations account for 20.1% of total employment.

Top 10 Occupations, Ranked by Employment New Jersey, 2024

Occupation	Employment	% of Total Employment	Median Hourly Wage
Home Health and Personal Care Aides	105,460	2.5%	\$17.83
Laborers and Freight, Stock, and Material Movers	101,720	2.4%	\$18.78
Registered Nurses	95,150	2.2%	\$49.39
Cashiers	93,270	2.2%	\$15.96
Retail Salespersons	87,760	2.1%	\$17.13
Fast Food and Counter Workers	86,980	2.0%	\$16.01
Packers and Packagers, Hand	76,060	1.8%	\$20.56
Office Clerks, General	71,140	1.7%	\$23.07
Stockers and Order Fillers	70,780	1.7%	\$17.69
Janitors and Cleaners	67,590	1.6%	\$17.94
Top 10 Occupations, Total	855,910	20.1%	
All Occupations, Total	4,250,430	100.0%	\$27.51

Note: OEWS collects the data for 2024.

Between 2022 and 2032 in Mercer County, the food preparation and serving related occupational group is projected to see the largest growth (+550).

Actual and Projected Employment by Occupation Group, Mercer County
Top 10 Occupation groups ranked by 2032 Employment Projections

Occupational Group	2022 Actual	2032 Projected	Net Change	Percent Change
Office and Administrative Support	6,650	6,100	-550	-8.3%
Sales and Related	5,150	5,200	50	1.0%
Management	3,900	4,100	200	5.1%
Transportation and Material Moving	3,850	4,100	250	6.5%
Food Preparation and Serving Related	3,300	3,850	550	16.7%
Business and Financial Operations	3,650	3,700	50	1.4%
Educational Instruction and Library	3,500	3,650	150	4.3%
Healthcare Practitioners and Technical	2,700	2,850	150	5.6%
Construction and Extraction	2,550	2,700	150	5.9%
Personal Care and Service	2,100	2,300	200	9.5%

Note: Employment data for Top 15 occupational groups is available in the [Appendix](#).



JOB POSTINGS



Job Postings

Mercer County vs. New Jersey

Source: Lightcast

Lightcast collect raw data on postings from more than 160,000 online sources, then synthesize and interpret those findings to provide meaningful insight in near real time. Job posting analytics can identify supply and demand for workers, skills, and jobs all over the world, as well as important contextual details like compensation trends.

Limitations: One job posting does not necessarily equal one actual job opening. Some companies may post jobs to signal growth to investors or advertise positions in multiple states. Additionally, a decline in job postings doesn't always indicate reduced demand; it could simply mean that companies have already filled their positions and are no longer actively recruiting. We treat this data as directional, offering insights into employer demand rather than exact measurements.



Top 5 Hiring Companies Mercer County, 2024

- **Princeton University**
- **Bristol-Myers Squibb**
- **Capital Health**
- **Johnson & Johnson**
- **Humana**



Top 5 Occupations Mercer County, 2024

- Registered Nurses
- Software Developers
- Retail Salespersons
- Medical and Health Services Managers
- Sales Representatives



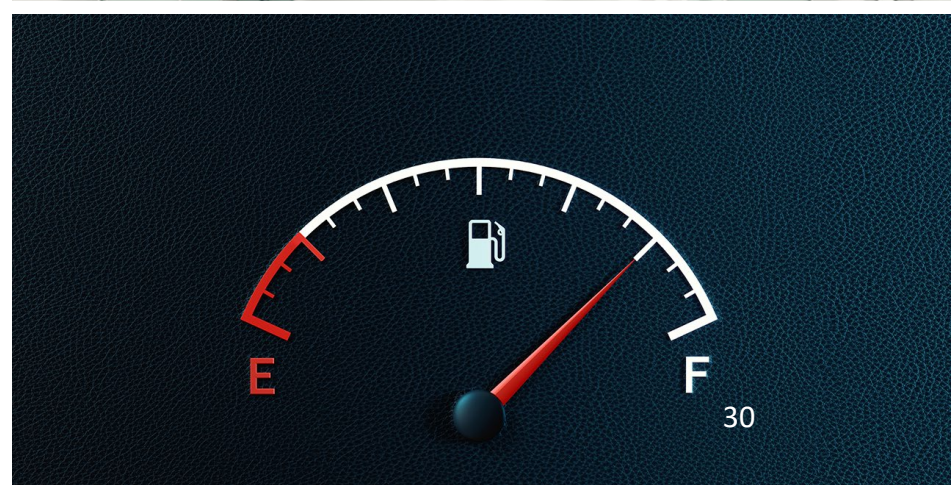
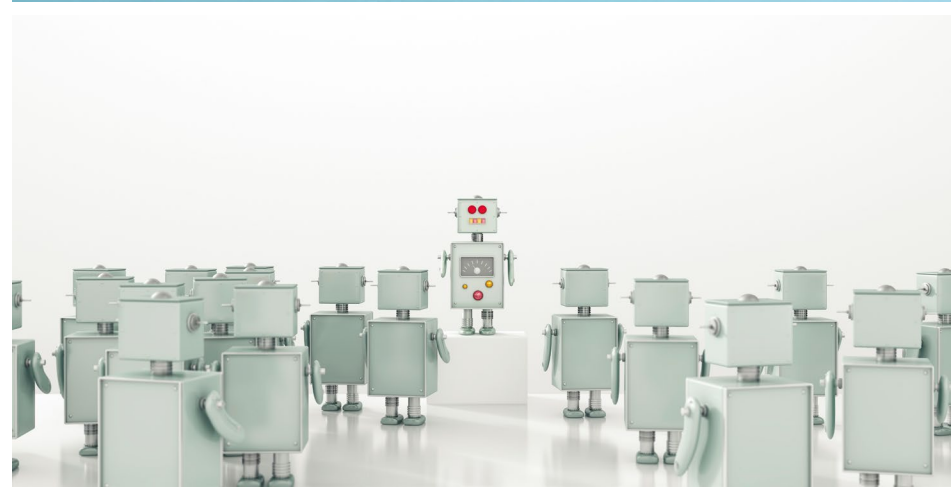


Top 5 Specialized Skills Mercer County, 2024

- **Project Management**
- **Marketing**
- **Finance**
- **Pharmaceuticals**
- **Auditing**

Top 5 Software Skills

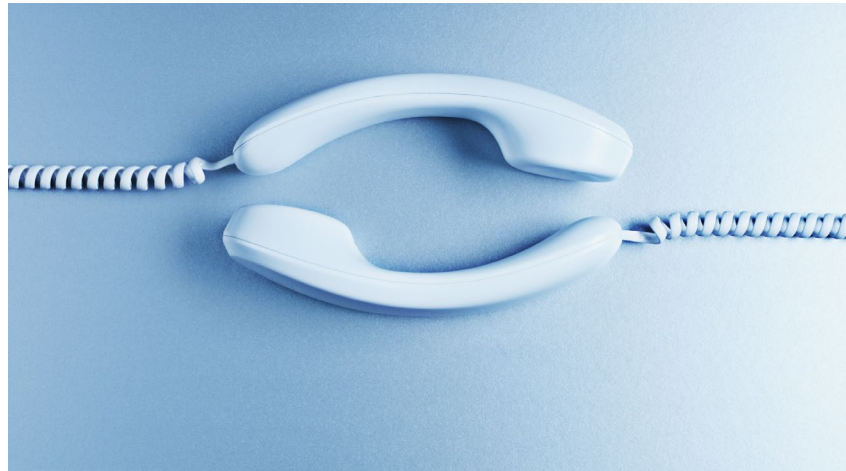
- **Microsoft Office (e.g., Excel, and PowerPoint)**
- **Programming Language (e.g., SQL, Python, and R)**
- **Application Programming Interface (API)**
- **Inventory Management**
- **Amazon Web Services**

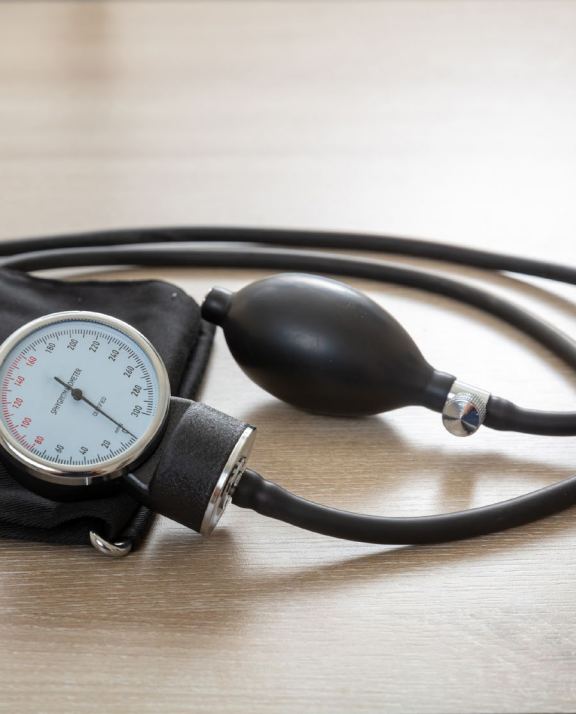




Top 5 Soft Skills Mercer County, 2024

- **Communication**
- **Customer Service**
- **Management**
- **Sales**
- **Operations**





Top 5 Certificates

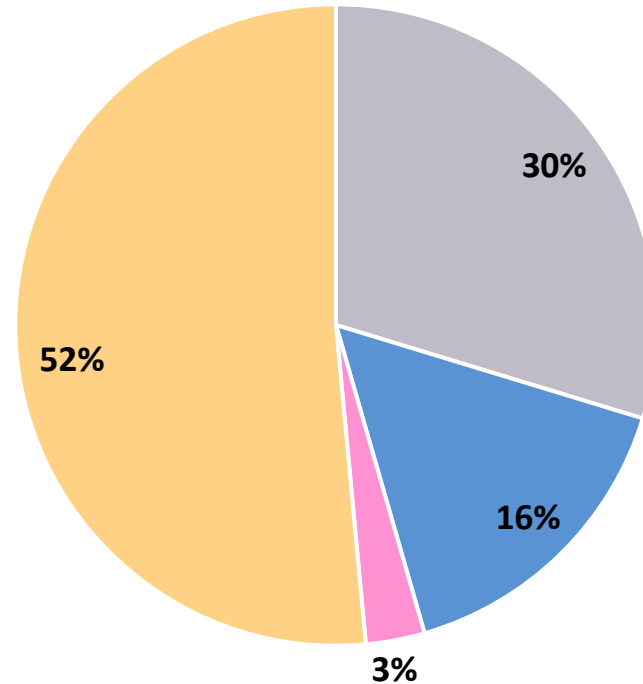
- **Valid Driver's License**
- **Cardiopulmonary Resuscitation (CPR) Certification**
- **Registered Nurse (RN)**
- **Licensed Practical Nurse (LPN)**
- **Basic Life Support (BLS) Certification**



52 percent of all job postings in Mercer County require a bachelor's degree or higher.

Job Postings by Educational Attainment
Mercer County, 2024

■ No education listed ■ High school or GED ■ Associate's degree ■ Bachelor's degree or higher



Note: Bachelor's degree or higher includes Bachelor's Degree, Master, Ph.D. or Professional Degree. While 30% of job postings did not specify educational attainment, this does not necessarily mean there are no requirements for it.



AI-related Job Postings

Mercer County vs. New Jersey

Source: Lightcast

To identify AI-related job postings, ORI-EDR compiled a curated list of 130 specific terms. A job listing is deemed AI-related if any of these terms appear in the skills section. A job listing is classified as AI-related if any of these terms are present in the skills section. This includes, but is not limited to, terms such as "AI/ML Inference," "Conversational AI," "Machine Learning Algorithms," "Supervised Learning," and "Deep Learning."

Limitations: One job posting does not necessarily equal one actual job opening. Some companies may post jobs to signal growth to investors or advertise positions in multiple states. Additionally, a decline in job postings doesn't always indicate reduced demand; it could simply mean that companies have already filled their positions and are no longer actively recruiting. We treat this data as directional, offering insights into employer demand rather than exact measurements.

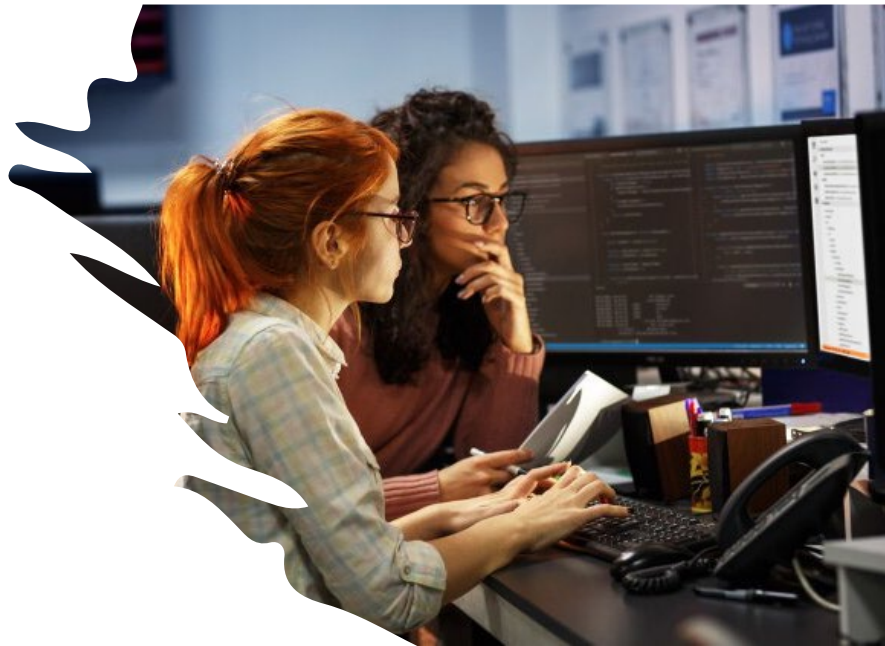
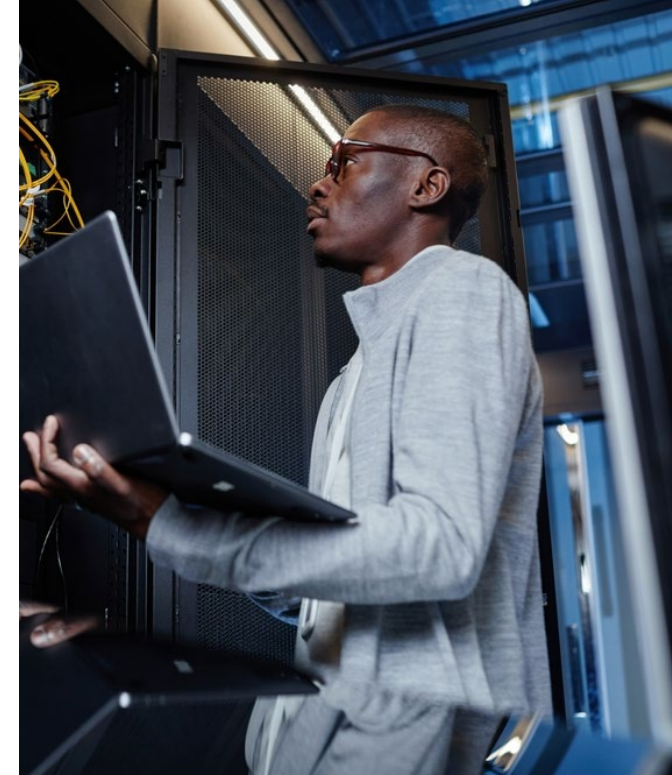


Top 5 AI-related Hiring Companies Mercer County, 2024

- Princeton University
- Bristol-Myers Squibb
- Johnson & Johnson
- Humana
- Deloitte

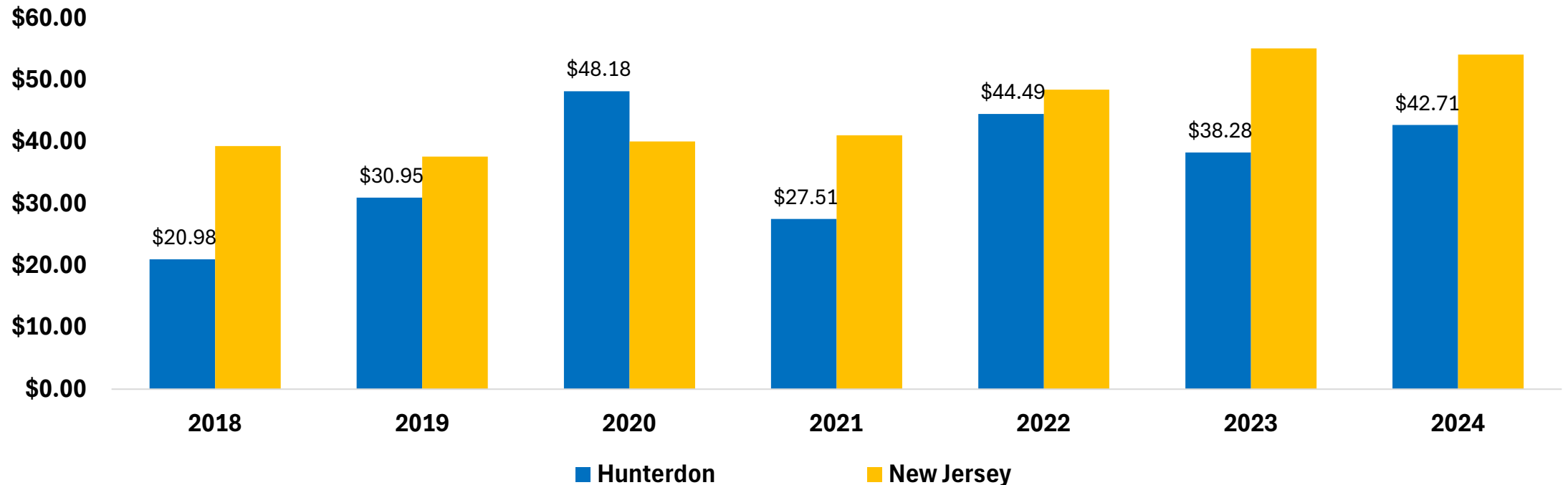
Top 5 AI-related Occupations Mercer County, 2024

- Software Developers
- Computer Occupations
- Data Scientists
- Project Management Specialists
- Actuaries



In Mercer County, the median hourly wage for AI-related job postings is often lower than the state.

Median Hourly Wage in AI-related Job Postings,
Mercer County vs. New Jersey, 2018-2024





TAKEAWAYS

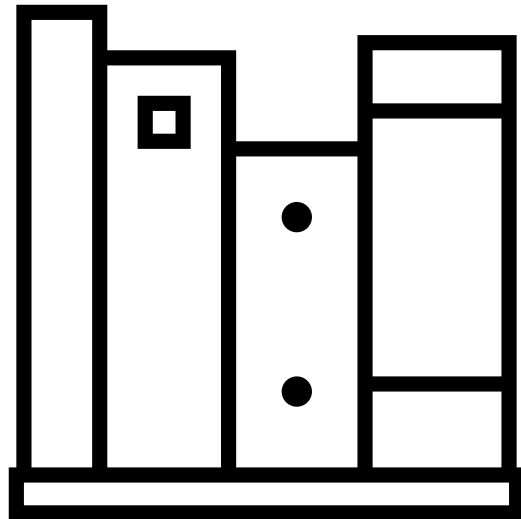


- **Key Economic and Workforce Insights: Mercer County**
 - **Demographics**
 - Mercer County's population is younger and more diverse than New.
 - The proportion of Mercer County residents with a bachelor's degree or higher is 2.8 percentage points above the state.



- **Key Economic and Workforce Insights: Mercer County (Continued)**
 - **Industry Composition**
 - 18.6% of business establishments are in health care and social assistance.
 - Professional and technical services and the finance and insurance sectors have higher employment shares in Mercer County compared to the state.

2025 Report Overview and Subscription Information



This report was prepared by the Office of Research and Information, Division of Economic & Demographic Research. This division collects and disseminates vital data on employers, employees, and population demographics.

2025-2026 NJDOL PUBLICATIONS

- [Real-Time Insights: Analysis of Job Posting Data in New Jersey for 2025](#) (January 2026)
- [Identifying and Tracking Emerging Occupations in New Jersey's Key Sectors](#) (January 2026)
- [New Jersey's Manufacturing Sector](#) (Winter 2025)
- [County Brief: Labor Market Facts](#) (December 2025)
- [Labor Market Spotlight - Celebrating New Jersey's Veterans](#) (Issue No. 28, Volume 3: November 2025)
- [Labor Market Spotlight - New Jersey's Waterways Help Keep the Economy Flowing](#) (Issue No. 27, Volume 3: October 2025)
- [New Jersey Employment Situation](#) (September 2025)
- [Job Openings and Labor Turnover Survey \(JOLTS\)](#) (August 2025)
- [New Jersey Building Permits](#) (August 2025)
- [New Jersey's Life Sciences Sector](#) (Fall 2025)
- [Labor Market Spotlight - The Industries Powering New Jersey's Special Moments](#) (Issue No. 26, Volume 3: August 2025)
- [New Jersey's Health Care Sector](#) (June 2025)
- [New Jersey Business Employment Dynamics](#) (May 2025)
- [Survey of Occupational Injuries and Illnesses \(SOII\)](#) (April 2025)
- [Labor Market Spotlight - Fortune 500 Companies](#) (Issue No. 25, Volume 3: March 2025)
- [Labor Market Spotlight - Young Adult Workforce](#) (Issue No. 24, Volume 3: January 2025)

JOIN OUR LIST

Link: nj.gov/labor/subscribetoori





THANK YOU!



APPENDIX

Mercer County Establishments, Ranked by Percent of the Total Establishments All Ownerships

Industry	Total Number of Establishments	Total Number of Employees	% of Total Establishments
Health care and social assistance	561	6,377	14.3%
Professional and technical services	550	3,734	14.0%
Construction	440	3,531	11.2%
Retail trade	392	5,954	10.0%
Other services, except public administration	348	2,102	8.8%
Administrative and waste services	296	2,009	7.5%
Accommodation and food services	285	3,497	7.2%
Manufacturing	146	2,931	3.7%
Wholesale trade	144	1,403	3.7%
Agriculture, forestry, fishing and hunting	84	1,095	2.1%
Real estate and rental and leasing	82	299	2.1%
Arts, entertainment, and recreation	76	1,126	1.9%
Transportation and warehousing	58	812	1.5%
Educational services	56	852	1.4%
Information	54	302	1.4%
Management of companies and enterprises	20	868	0.5%
Mining	7	65	0.2%
Total	3,933	40,378	100.0%

Note: An establishment is considered unknown when there is insufficient detail to accurately determine its primary industry at that location. It will be assigned an industry code once the program can verify its main business activity.

Actual and Projected Employment by Occupation Group, Mercer County
Top 15 Occupations ranked by 2032 Employment Projections

Occupational Group	2022 Actual	2032 Projected	Net Change	Percent Change
Office and Administrative Support Occupations	6,650	6,100	-550	-8.3%
Sales and Related Occupations	5,150	5,200	50	1.0%
Management Occupations	3,900	4,100	200	5.1%
Transportation and Material Moving Occupations	3,850	4,100	250	6.5%
Food Preparation and Serving Related Occupations	3,300	3,850	550	16.7%
Business and Financial Operations Occupations	3,650	3,700	50	1.4%
Educational Instruction and Library Occupations	3,500	3,650	150	4.3%
Healthcare Practitioners and Technical Occupations	2,700	2,850	150	5.6%
Construction and Extraction Occupations	2,550	2,700	150	5.9%
Personal Care and Service Occupations	2,100	2,300	200	9.5%
Computer and Mathematical Occupations	1,900	2,100	200	10.5%
Healthcare Support Occupations	1,900	2,100	200	10.5%
Production Occupations	2,000	1,850	-150	-7.5%
Installation, Maintenance, and Repair Occupations	1,650	1,750	100	6.1%
Building and Grounds Cleaning and Maintenance Occupations	1,400	1,450	50	3.6%