

# Middlesex County

Division of Economic and Demographic Research

Office of Research & Information

New Jersey Department of Labor and Workforce Development

February 2026

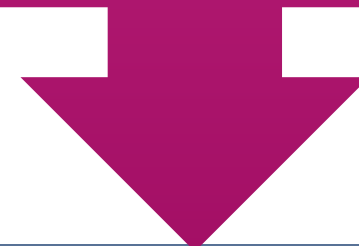


# TABLE OF CONTENTS

<b>Who Are We?</b>	<b>3</b>
<b>Purpose and Highlights</b>	<b>4</b>
<b>Demographic and Housing Characteristics</b>	<b>5</b>
<b>Economy</b>	<b>12</b>
<b>Job Postings</b>	<b>25</b>
<b>Takeaways</b>	<b>38</b>
<b>2025-2026 NJDOL Publications</b>	<b>42</b>
<b>Join Our List</b>	<b>43</b>

**WHO ARE  
WE?**

New Jersey Department of Labor  
Office of Research and Information



Division of Economic and Demographic  
Research

**SDC**

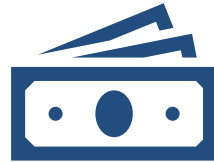
**BLS**

**LMI**

# The purpose of this report is to highlight the key demographic and economic trends in the county



Middlesex County has a **lower median age and a greater share of foreign-born residents** than New Jersey.



Middlesex County's real GDP ranks 2nd among all New Jersey counties.



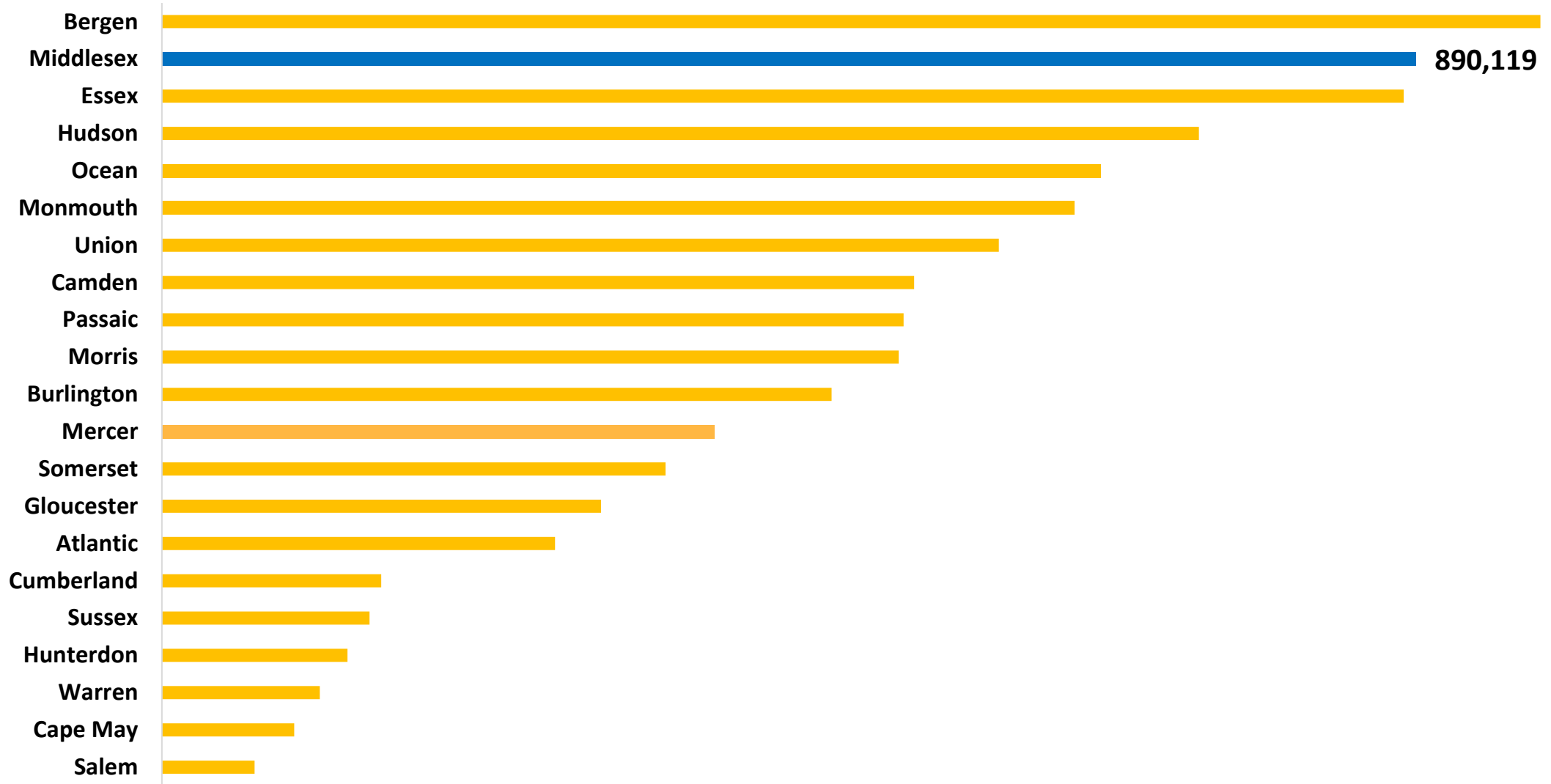
The **top** occupations in demand include Registered Nurses, Retail Salespersons and Software Developers.



# DEMOGRAPHIC AND HOUSING CHARACTERISTICS

# Middlesex County's population was 890,119 in 2024.

## Population Estimates by County in New Jersey, 2024



**Middlesex County has a lower median age and a greater share of foreign-born residents than New Jersey.**

### **Demographic Characteristics**

<b>Indicator</b>	<b>Middlesex County</b>	<b>New Jersey</b>
<b>Median Age</b>	39.4	40.1
<b>% of Older Population (65+)</b>	16.9%	18.0%
<b>% of Language Other Than English Spoken at Home</b>	48.2%	34.3%
<b>% of Foreign-Born Population</b>	36.4%	25.0%
<b>% of Hispanic or Latino (of Any Race)</b>	24.8%	23.5%

The share of Middlesex County residents with a bachelor’s degree or higher is 3.0 percentage points above the state.

**Educational Attainment (Population 25 Years and Older)**

<b>Indicator</b>	<b>Middlesex County</b>	<b>New Jersey</b>
<b>High School or Equivalent Degree</b>	21.4%	24.7%
<b>Some College, No Degree</b>	13.7%	14.5%
<b>Associate's Degree</b>	6.1%	6.6%
<b>Bachelor's Degree or Higher</b>	47.5%	44.5%
<b>High School Degree or Higher</b>	88.7%	90.3%

Middlesex County has a higher median household income and a lower poverty rate compared to the state.

### Income & Poverty

Indicator	Middlesex County	New Jersey
Median Household Income	\$115,040	\$104,294
% of Poverty	8.4%	9.2%

*Note:* Median Household Income in the Past 12 Months (in 2023 Inflation-Adjusted Dollars)

**Middlesex County residents pay higher rent and have a higher homeownership rate compared to the state average.**

### **Housing Characteristics**

<b>Indicator</b>	<b>Middlesex County</b>	<b>New Jersey</b>
<b>Total Households</b>	310,450	3,543,944
<b>Median Gross Rent</b>	\$1,947	\$1,800
<b>Homeownership Rate</b>	73.6%	63.9%
<b>% of Housing Value of Owner Occupied (≥\$300,000)</b>	88.0%	80.7%

**Middlesex County residents have longer commute times, and a lower percentage of commuters using public transportation compared to the state average.**

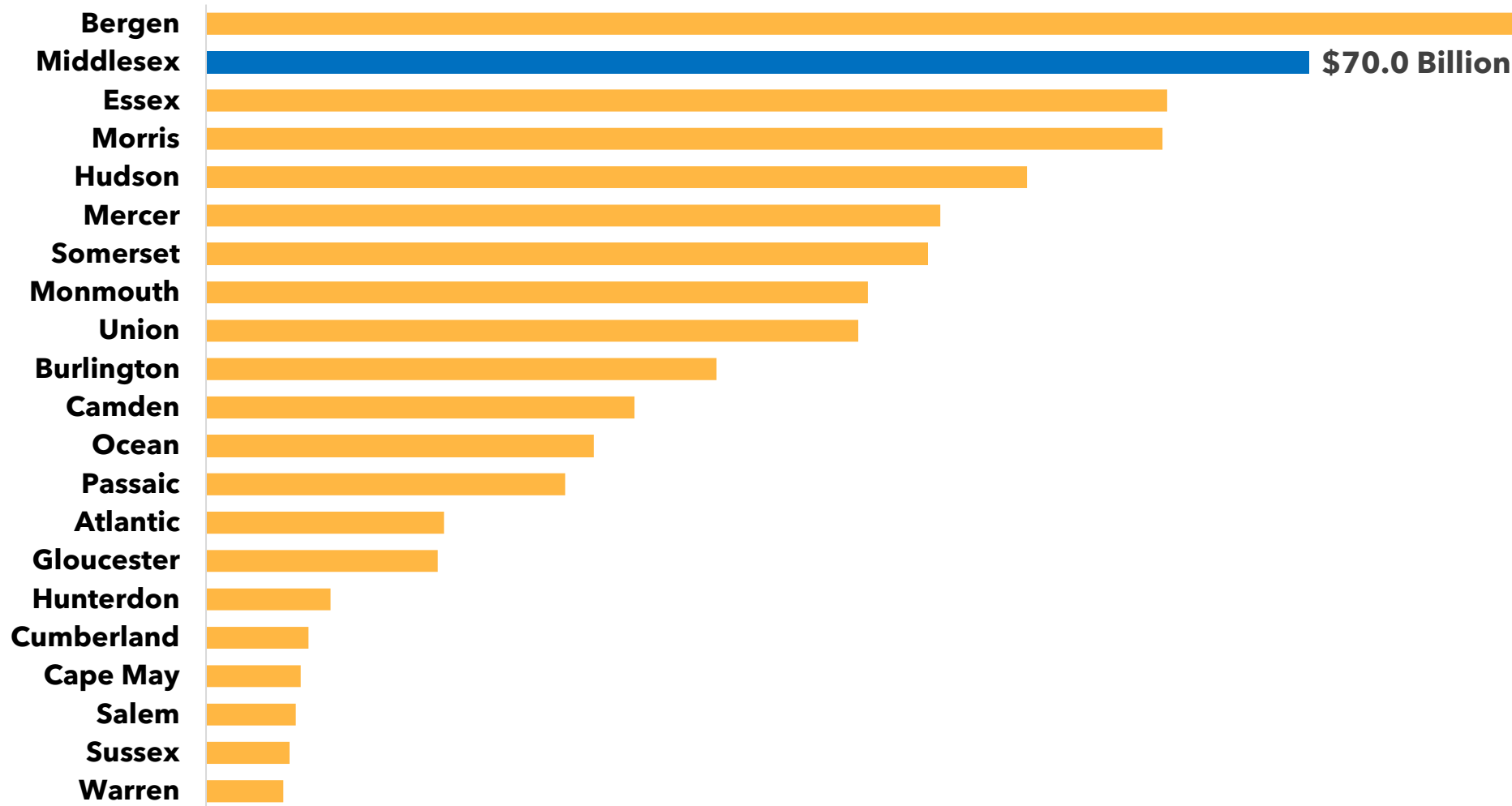
### **Commuting Characteristics**

<b>Indicator</b>	<b>Middlesex County</b>	<b>New Jersey</b>
<b>Average Travel Time to Work (in Minutes)</b>	32.7	31.4
<b>% of Public Transportation</b>	7.0%	9.6%
<b>% of Working From Home</b>	14.0%	14.0%



In 2024, Middlesex County's real GDP was \$70.0 billion, ranking 2nd among all New Jersey counties.

### Real Gross Domestic Product (GDP) by County in New Jersey, 2024





# Establishments and Employment

## Middlesex County

Source: Quarterly Census of Employment and Wages (QCEW) program, 2024

The QCEW program produces quarterly and annual data on the number of establishments, total employment, and wages for workers covered by New Jersey unemployment insurance (UI) laws, as well as federal employees under the Unemployment Compensation for Federal Employees (UCFE) program. This data is published at various geographical and industry levels.

## 20.1% of Middlesex County establishments are in health care and social assistance.

### Middlesex County Establishments, Ranked by Percent of the Total Establishments All Ownerships

Industry	Total Number of Establishments	Total Number of Employees	% of Total Establishments
Health Care and Social Assistance	5,036	57,733	20.1%
Professional and Technical Services	3,813	40,492	15.2%
Retail Trade	2,282	37,019	9.1%
Accommodation and Food Services	1,752	24,124	7.0%
Other Services, Ex. Public Admin	1,710	12,941	6.8%
Wholesale Trade	1,507	29,555	6.0%
Administrative and Waste Services	1,454	36,307	5.8%
Construction	1,450	15,208	5.8%
Transportation and Warehousing	1,305	49,911	5.2%
Finance and Insurance	848	11,924	3.4%
Manufacturing	824	30,862	3.3%
Real Estate and Rental and Leasing	706	5,787	2.8%
Information	334	5,906	1.3%
Arts, Entertainment, and Recreation	207	4,330	0.8%
Management of Companies and Enterprises	122	7,626	0.5%

Note: Full list of establishments in Middlesex County is available in [Appendix](#).

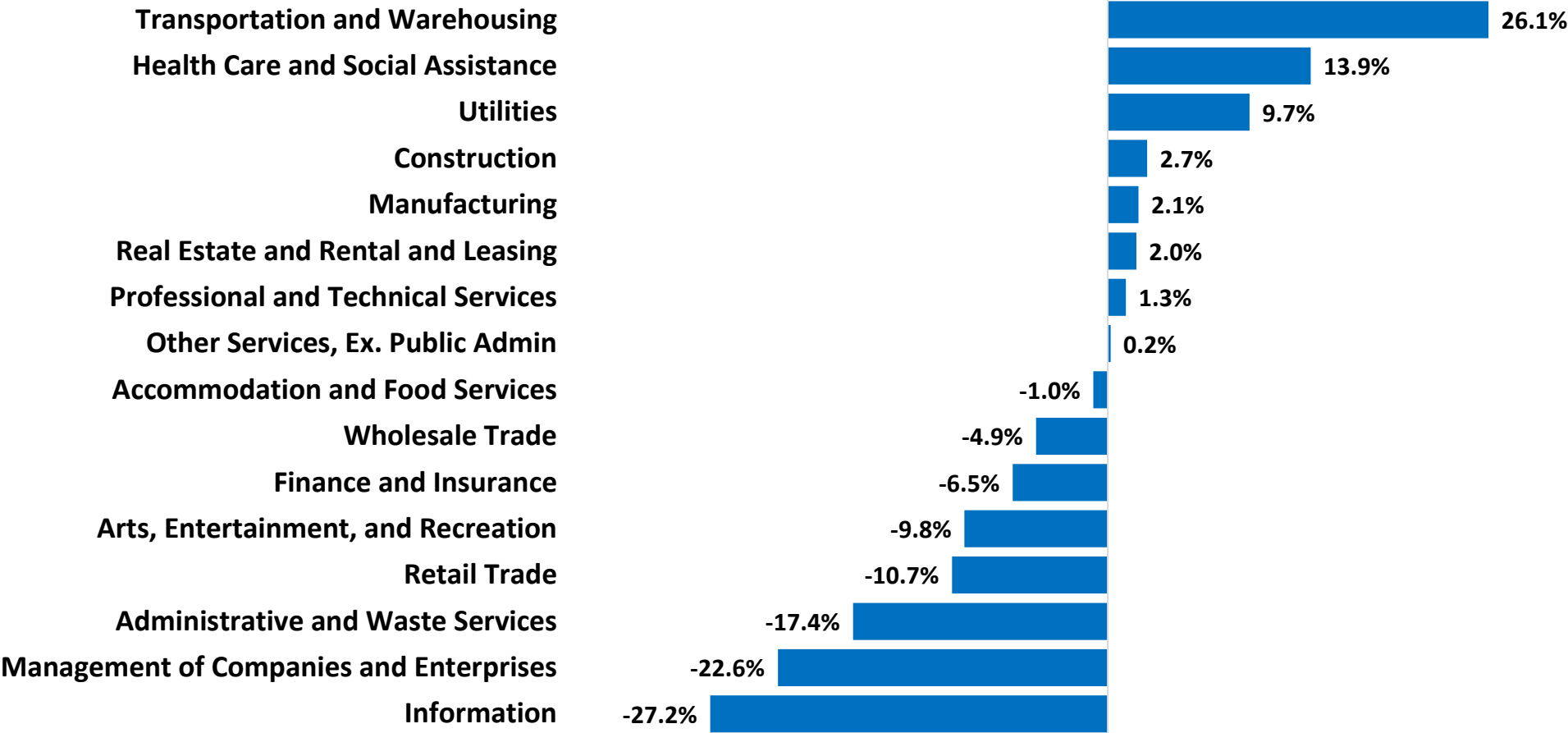
# In Middlesex County, transportation and warehousing has a higher employment share compared to the state.

## Private Employment Middlesex County vs. New Jersey, 2024

Industry	Middlesex County		New Jersey		Difference between
	Employment	% of Total	Employment	% of Total	
Construction	15,208	4.0%	164,014	4.5%	-0.4%
Manufacturing	30,862	8.2%	253,054	6.9%	1.3%
Wholesale Trade	29,555	7.9%	213,549	5.8%	2.0%
Retail Trade	37,019	9.8%	427,521	11.6%	-1.8%
Transportation and Warehousing	49,911	13.3%	233,943	6.4%	6.9%
Information	5,906	1.6%	76,199	2.1%	-0.5%
Finance and Insurance	11,924	3.2%	189,987	5.2%	-2.0%
Real Estate and Rental and Leasing	5,787	1.5%	63,263	1.7%	-0.2%
Professional and Technical Services	40,492	10.8%	336,105	9.1%	1.6%
Management of Companies and Enterprises	7,626	2.0%	82,588	2.2%	-0.2%
Administrative and Waste Services	36,307	9.6%	286,750	7.8%	1.9%
Health Care and Social Assistance	57,733	15.3%	656,356	17.8%	-2.5%
Arts, Entertainment and Recreation	4,330	1.2%	73,699	2.0%	-0.9%
Accommodation and Food Services	24,124	6.4%	328,905	8.9%	-2.5%
Other Services	12,941	3.4%	144,086	3.9%	-0.5%

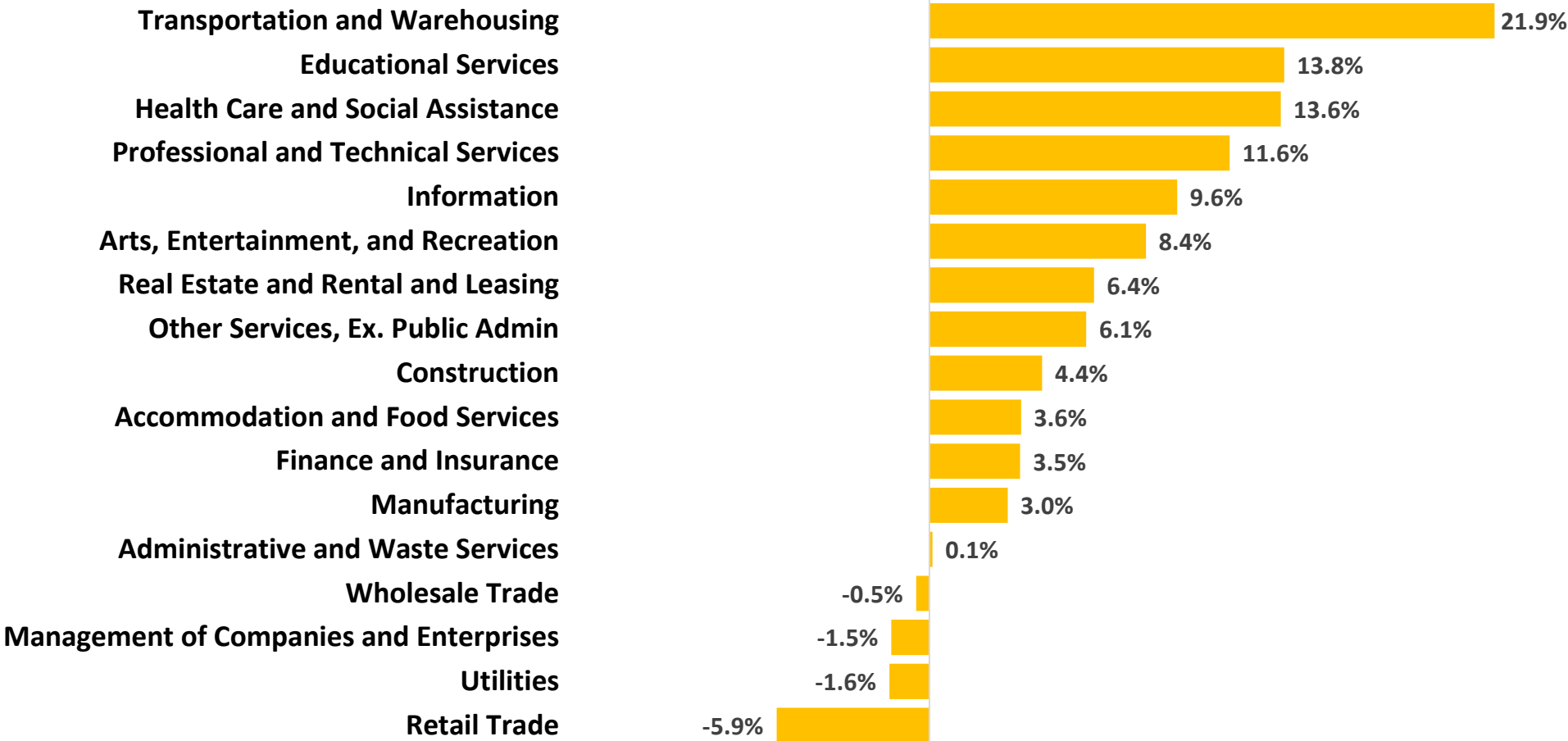
Between 2018 and 2024, transportation and warehousing was the fastest-growing employment sector in Middlesex County, increasing by 26.1%.

**Percent Change in Employment by Industry**  
Middlesex County, 2018-2024 (ranked by percentage change in employment)



# Transportation and warehousing saw strong growth in New Jersey, expanding by 21.9% from 2018 to 2024.

**Percent Change in Employment by Industry**  
New Jersey, 2018-2024 (ranked by percentage change in employment)





# Unemployment Trend

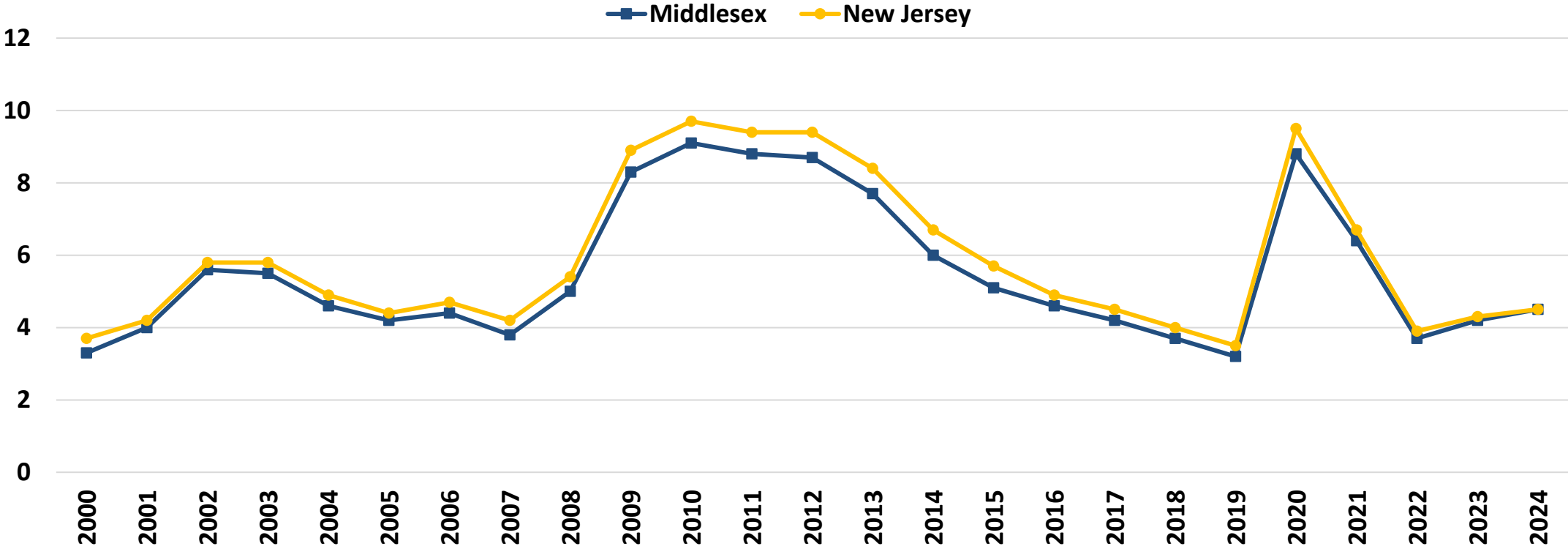
## Middlesex County vs. New Jersey

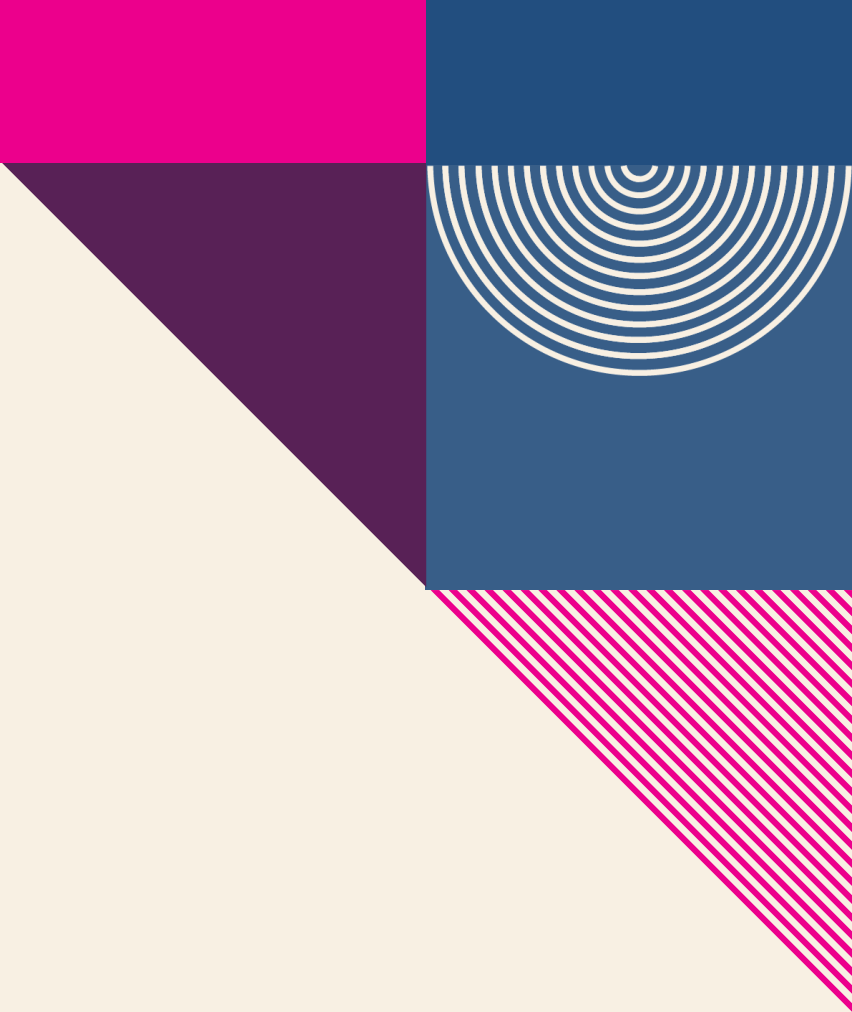
Source: Local Area Unemployment Statistics (LAUS), 2024

The Local Area Unemployment Statistics (LAUS) program produces monthly and annual employment, unemployment, and labor force data for Census regions and divisions, States, counties, metropolitan areas, and many cities, by place of residence.

# The unemployment rate in Middlesex County follows state trends but was slightly lower than the New Jersey average.

Unemployment Rate  
Middlesex County vs. New Jersey, 2000-2024





# Occupational Employment and Wages

## Middlesex County vs. New Jersey

Source: 2024 National Occupational Employment and Wage Estimates (OEWS)

The Occupational Employment and Wage Statistics (OEWS) program produces employment, and wage estimates annually for approximately 830 occupations. These estimates are available for the nation, for individual states, and for metropolitan and nonmetropolitan areas; national occupational estimates for specific industries are also available.

## 24.3% of Middlesex County's total employment is concentrated in the top 10 occupations.

### Top 10 Occupations, Ranked by Employment Middlesex County, 2024

Occupation	Employment	% of Total Employment	Median Hourly Wage
Packers and Packagers, Hand	20,990	4.8%	\$20.56
Laborers and Freight, Stock, and Material Movers, Hand	19,210	4.4%	\$19.09
Home Health and Personal Care Aides	10,300	2.4%	\$17.56
Registered Nurses	8,960	2.0%	\$50.48
Stockers and Order Fillers	7,990	1.8%	\$18.18
Cashiers	7,980	1.8%	\$16.30
Fast Food and Counter Workers	7,800	1.8%	\$16.24
Software Developers	7,760	1.8%	\$61.37
Heavy and Tractor-Trailer Truck Drivers	7,660	1.8%	\$33.45
Retail Salespersons	7,510	1.7%	\$17.29
<b>Top 10 Occupations, Total</b>	<b>106,160</b>	<b>24.3%</b>	
<b>All Occupations, Total</b>	<b>473,290</b>	<b>100.0%</b>	<b>\$27.55</b>

Note: OEWS collects the data for 2024.

## In New Jersey, the top 10 occupations account for 20.1% of total employment.

### Top 10 Occupations, Ranked by Employment New Jersey, 2024

Occupation	Employment	% of Total Employment	Median Hourly Wage
Home Health and Personal Care Aides	105,460	2.5%	\$17.83
Laborers and Freight, Stock, and Material Movers	101,720	2.4%	\$18.78
Registered Nurses	95,150	2.2%	\$49.39
Cashiers	93,270	2.2%	\$15.96
Retail Salespersons	87,760	2.1%	\$17.13
Fast Food and Counter Workers	86,980	2.0%	\$16.01
Packers and Packagers, Hand	76,060	1.8%	\$20.56
Office Clerks, General	71,140	1.7%	\$23.07
Stockers and Order Fillers	70,780	1.7%	\$17.69
Janitors and Cleaners	67,590	1.6%	\$17.94
<b>Top 10 Occupations, Total</b>	<b>855,910</b>	<b>20.1%</b>	
<b>All Occupations, Total</b>	<b>4,250,430</b>	<b>100.0%</b>	<b>\$27.51</b>

Note: OEWS collects the data for 2024.

**Between 2022 and 2032 in Middlesex County, the transportation and material moving occupational group is projected to see the largest growth (+13,600).**

**Actual and Projected Employment by Occupation Group, Middlesex County  
Top 10 Occupation groups ranked by 2032 Employment Projections**

<b>Occupational Group</b>	<b>2022 Actual</b>	<b>2032 Projected</b>	<b>Net Change</b>	<b>Percent Change</b>
<b>Transportation and Material Moving</b>	76,350	89,950	13,600	17.8%
<b>Office and Administrative Support</b>	67,800	68,150	350	0.5%
<b>Sales and Related</b>	41,150	42,400	1,250	3.1%
<b>Management</b>	35,200	39,300	4,100	11.6%
<b>Educational Instruction and Library</b>	30,900	32,950	2,050	6.6%
<b>Business and Financial Operations</b>	30,400	33,100	2,700	8.9%
<b>Healthcare Practitioners and Technical</b>	24,550	27,400	2,850	11.7%
<b>Production</b>	22,950	23,650	700	3.1%
<b>Food Preparation and Serving Related</b>	22,250	24,700	2,450	10.9%
<b>Building and Grounds Cleaning and Maintenance</b>	19,850	22,050	2,200	11.0%

*Note:* Employment data for Top 15 occupational groups is available in the [Appendix](#).



# JOB POSTINGS



# Job Postings

## Middlesex County vs. New Jersey

Source: Lightcast

Lightcast collect raw data on postings from more than 160,000 online sources, then synthesize and interpret those findings to provide meaningful insight in near real time. Job posting analytics can identify supply and demand for workers, skills, and jobs all over the world, as well as important contextual details like compensation trends.

Limitations: One job posting does not necessarily equal one actual job opening. Some companies may post jobs to signal growth to investors or advertise positions in multiple states. Additionally, a decline in job postings doesn't always indicate reduced demand; it could simply mean that companies have already filled their positions and are no longer actively recruiting. We treat this data as directional, offering insights into employer demand rather than exact measurements.



## Top 5 Hiring Companies Middlesex County, 2024

- Rutgers University
- Hackensack Meridian Health
- RWJ Barnabas Health
- Novo Nordisk
- Saint Peter's Healthcare System

## Top 5 Occupations Middlesex County, 2024

- Registered Nurses
- Retail Salespersons
- Software Developers
- Heavy and Tractor Trailer Truck Drivers
- First-Line Supervisors of Retail Sales Workers



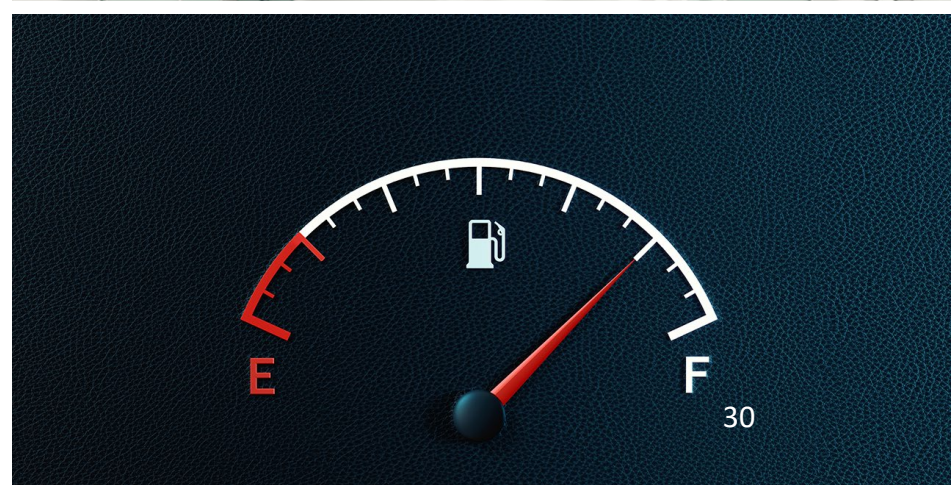
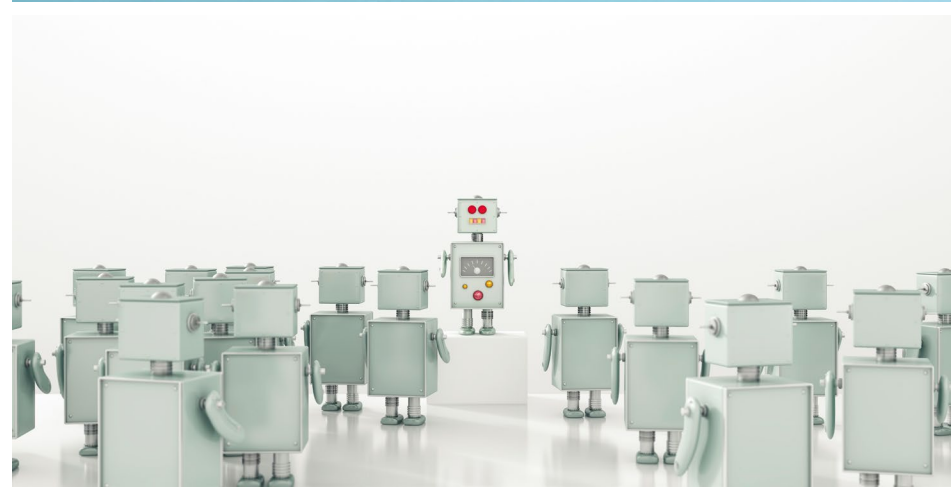


## **Top 5 Specialized Skills Middlesex County, 2024**

- **Nursing**
- **Infection Control**
- **Project Management**
- **Warehousing**
- **Auditing**

## Top 5 Software Skills

- Microsoft Office (e.g., Excel, and PowerPoint)
- Programming Language (e.g., SQL, Python, and R)
- PeopleSoft Applications
- SAP Applications
- Application Programming Interface (API)

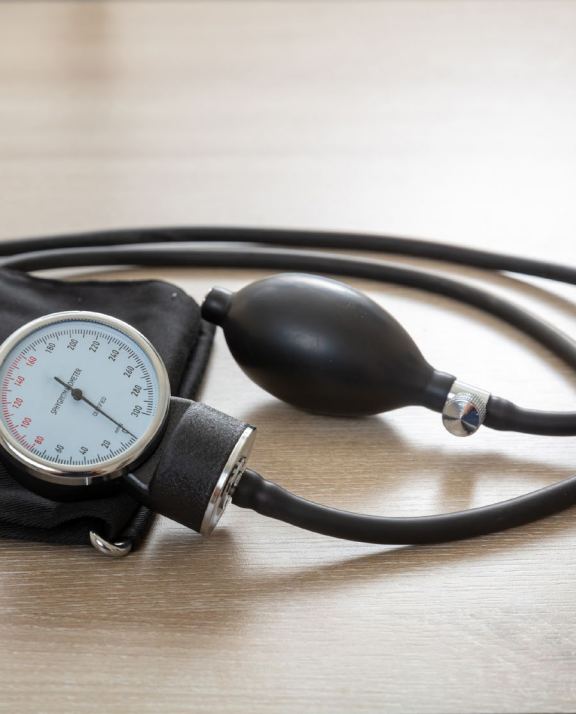




## Top 5 Soft Skills Middlesex County, 2024

- **Communication**
- **Management**
- **Customer Service**
- **Operations**
- **Sales**





## Top 5 Certificates

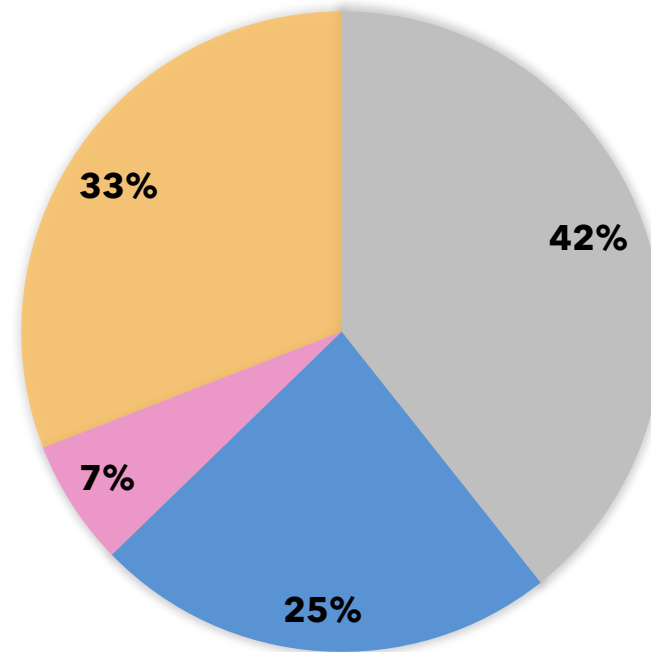
- **Valid Driver's License**
- **Registered Nurse (RN)**
- **Basic Life Support (BLS) Certification**
- **Cardiopulmonary Resuscitation (CPR) Certification**
- **Advanced Cardiovascular Life Support (ACLS) Certification**



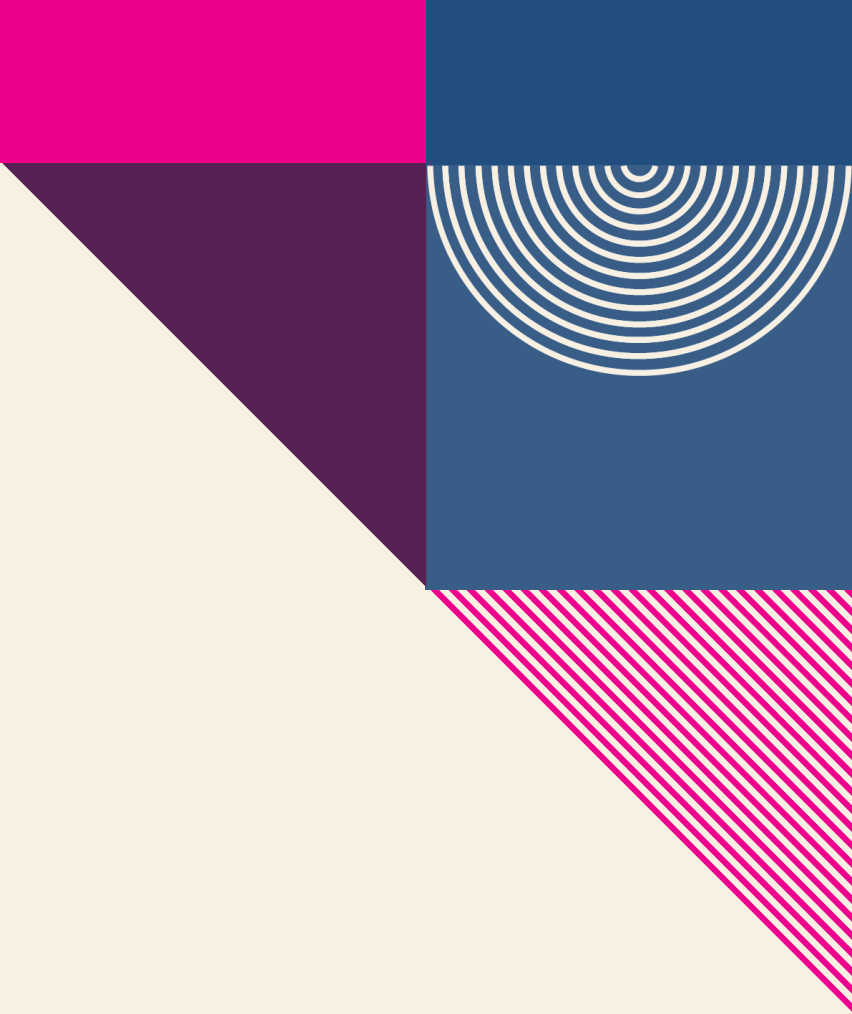
**33 percent of all job postings in Middlesex County require a bachelor's degree or higher.**

### Job Postings by Educational Attainment Middlesex County, 2024

■ No education listed ■ High school or GED ■ Associate's degree ■ Bachelor's degree or higher



*Note:* Bachelor's degree or higher includes Bachelor's Degree, Master, Ph.D. or Professional Degree. While 42% of job postings did not specify educational attainment, this does not necessarily mean there are no requirements for it.



# AI-related Job Postings

## Middlesex County vs. New Jersey

Source: Lightcast

To identify AI-related job postings, ORI-EDR compiled a curated list of 130 specific terms. A job listing is deemed AI-related if any of these terms appear in the skills section. A job listing is classified as AI-related if any of these terms are present in the skills section. This includes, but is not limited to, terms such as "AI/ML Inference," "Conversational AI," "Machine Learning Algorithms," "Supervised Learning," and "Deep Learning."

Limitations: One job posting does not necessarily equal one actual job opening. Some companies may post jobs to signal growth to investors or advertise positions in multiple states. Additionally, a decline in job postings doesn't always indicate reduced demand; it could simply mean that companies have already filled their positions and are no longer actively recruiting. We treat this data as directional, offering insights into employer demand rather than exact measurements.

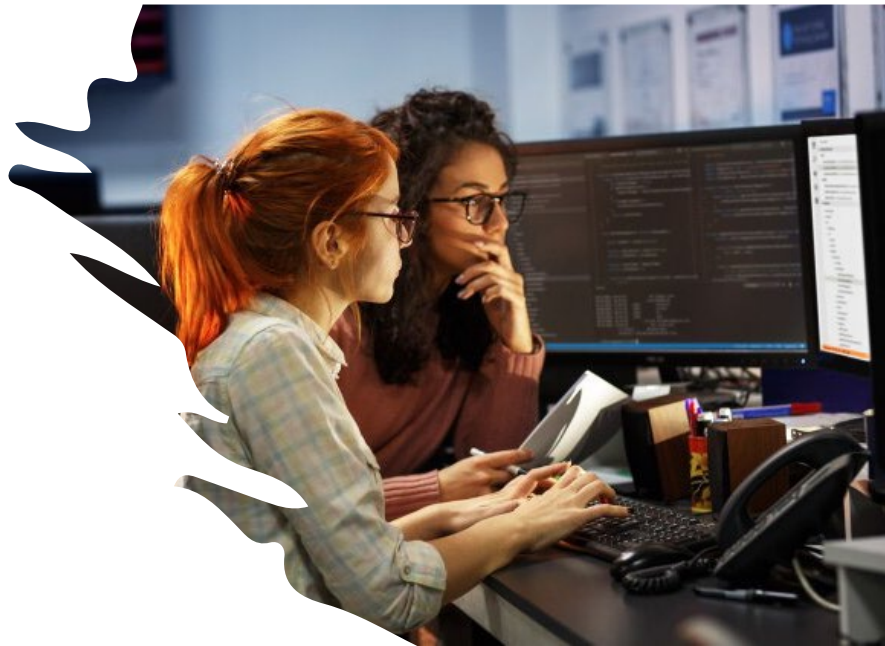
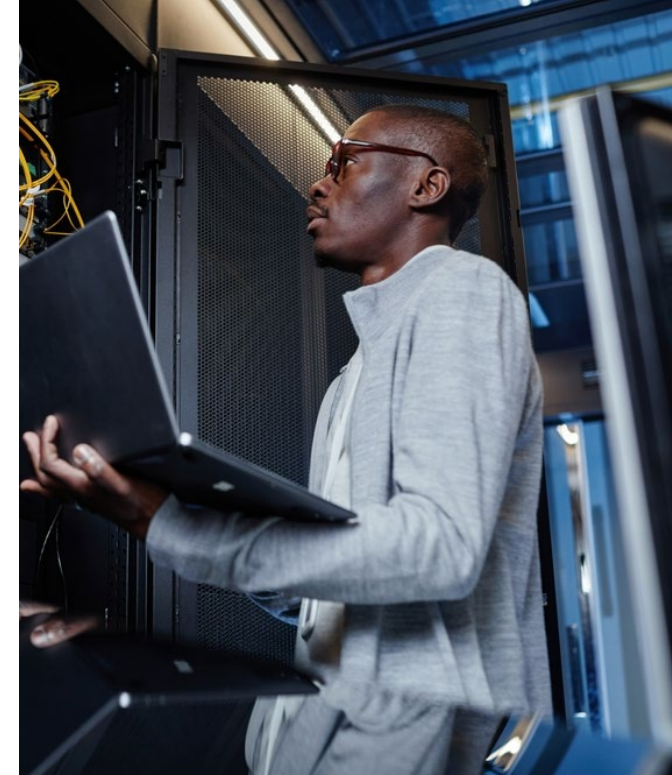


## Top 5 AI-related Hiring Companies Middlesex County, 2024

- Rutgers University
- Hackensack Meridian Health
- Novo Nordisk
- Johnson and Johnson
- Bristol-Myers Squibb

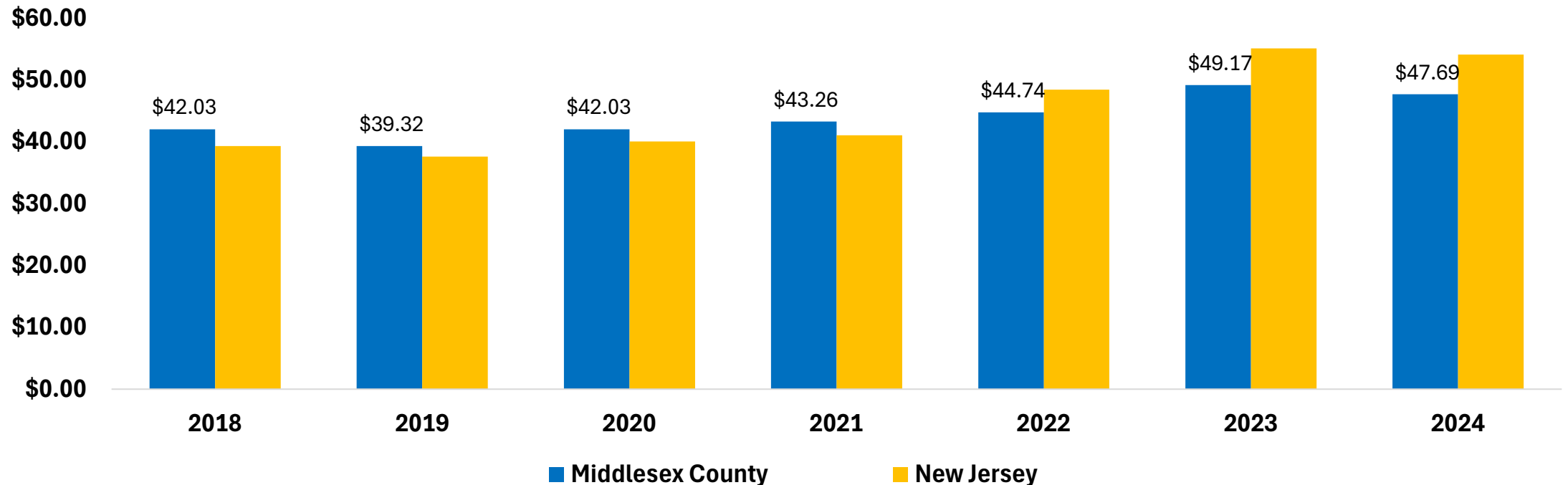
# Top 5 AI-related Occupations Middlesex County, 2024

- Software Developers
- Project Management Specialists
- Information Technology Project Managers
- Business Intelligence Analyst
- Management Analysts



In Middlesex County, the median hourly wage for AI-related job postings has been lower than the state since 2022.

Median Hourly Wage in AI-related Job Postings, Middlesex County vs. New Jersey, 2018-2024





# TAKEAWAYS



- **Key Economic and Workforce Insights: Middlesex County**
  - **Demographics**
    - Middlesex County's population is comparable in age but and more diverse than New Jersey.
    - The proportion of Middlesex County residents with a bachelor's degree or higher is 3.0 percentage points above the state.

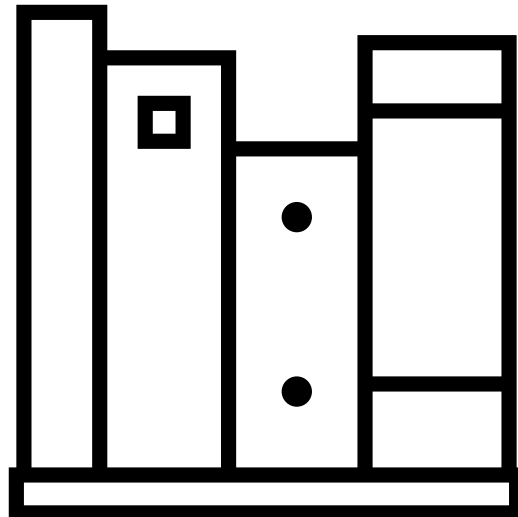


- **Key Economic and Workforce Insights: Middlesex County (Continued)**

- **Industry Composition**

- 20.1% of business establishments are in health care and social assistance.
- The transportation and warehousing sector has a higher employment share in Middlesex County compared to the state.

# 2025 Report Overview and Subscription Information



This report was prepared by the Office of Research and Information, Division of Economic & Demographic Research. This division collects and disseminates vital data on employers, employees, and population demographics.

# 2025-2026 NJDOL PUBLICATIONS

- [Real-Time Insights: Analysis of Job Posting Data in New Jersey for 2025](#) (January 2026)
- [Identifying and Tracking Emerging Occupations in New Jersey's Key Sectors](#) (January 2026)
- [New Jersey's Manufacturing Sector](#) (Winter 2025)
- [County Brief: Labor Market Facts](#) (December 2025)
- [Labor Market Spotlight - Celebrating New Jersey's Veterans](#) (Issue No. 28, Volume 3: November 2025)
- [Labor Market Spotlight - New Jersey's Waterways Help Keep the Economy Flowing](#) (Issue No. 27, Volume 3: October 2025)
- [New Jersey Employment Situation](#) (September 2025)
- [Job Openings and Labor Turnover Survey \(JOLTS\)](#) (August 2025)
- [New Jersey Building Permits](#) (August 2025)
- [New Jersey's Life Sciences Sector](#) (Fall 2025)
- [Labor Market Spotlight - The Industries Powering New Jersey's Special Moments](#) (Issue No. 26, Volume 3: August 2025)
- [New Jersey's Health Care Sector](#) (June 2025)
- [New Jersey Business Employment Dynamics](#) (May 2025)
- [Survey of Occupational Injuries and Illnesses \(SOII\)](#) (April 2025)
- [Labor Market Spotlight - Fortune 500 Companies](#) (Issue No. 25, Volume 3: March 2025)
- [Labor Market Spotlight - Young Adult Workforce](#) (Issue No. 24, Volume 3: January 2025)

# JOIN OUR LIST

Link: [nj.gov/labor/subscribetoori](https://nj.gov/labor/subscribetoori)





**THANK YOU!**



# APPENDIX

## Middlesex County Establishments, Ranked by Percent of the Total Establishments All Ownerships

Industry	Total Number of Establishments	Total Number of Employees	% of Total Establishments
Health Care and Social Assistance	5,036	57,733	20.1%
Professional and Technical Services	3,813	40,492	15.2%
Retail Trade	2,282	37,019	9.1%
Accommodation and Food Services	1,752	24,124	7.0%
Other Services, Ex. Public Admin	1,710	12,941	6.8%
Wholesale Trade	1,507	29,555	6.0%
Administrative and Waste Services	1,454	36,307	5.8%
Construction	1,450	15,208	5.8%
Unclassified	1,307	1,527	5.2%
Transportation and Warehousing	1,305	49,911	5.2%
Finance and Insurance	848	11,924	3.4%
Manufacturing	824	30,862	3.3%
Real Estate and Rental and Leasing	706	5,787	2.8%
Information	334	5,906	1.3%
Educational Services	313	3,726	1.2%
Arts, Entertainment, and Recreation	207	4,330	0.8%
Management of Companies and Enterprises	122	7,626	0.5%
Utilities	38	961	0.2%
<b>Total</b>	<b>25,042</b>	<b>376,330</b>	<b>100.0%</b>

*Note:* An establishment is considered unknown when there is insufficient detail to accurately determine its primary industry at that location. It will be assigned an industry code once the program can verify its main business activity.

**Actual and Projected Employment by Occupation Group, Middlesex County**  
**Top 15 Occupations ranked by 2032 Employment Projections**

<b>Occupational Group</b>	<b>2022 Actual</b>	<b>2032 Projected</b>	<b>Net Change</b>	<b>Percent Change</b>
<b>Transportation and Material Moving</b>	76,350	89,950	13,600	17.8%
<b>Office and Administrative Support</b>	67,800	68,150	350	0.5%
<b>Sales and Related</b>	41,150	42,400	1,250	3.1%
<b>Management</b>	35,200	39,300	4,100	11.6%
<b>Educational Instruction and Library</b>	30,900	32,950	2,050	6.6%
<b>Business and Financial Operations</b>	30,400	33,100	2,700	8.9%
<b>Healthcare Practitioners and Technical</b>	24,550	27,400	2,850	11.7%
<b>Production</b>	22,950	23,650	700	3.1%
<b>Food Preparation and Serving Related</b>	22,250	24,700	2,450	10.9%
<b>Building and Grounds Cleaning and Maintenance</b>	19,850	22,050	2,200	11.0%
<b>Computer and Mathematical Occupations</b>	19,700	23,000	3,300	16.5%
<b>Installation, Maintenance, and Repair Occupations</b>	16,800	18,500	1,700	10.2%
<b>Healthcare Support Occupations</b>	16,500	19,550	3,050	18.5%
<b>Personal Care and Service Occupations</b>	14,050	15,850	1,800	12.8%
<b>Construction and Extraction Occupations</b>	13,950	15,100	1,150	8.6%