

Monmouth County

Division of Economic and Demographic Research

Office of Research & Information

New Jersey Department of Labor and Workforce Development

February 2026

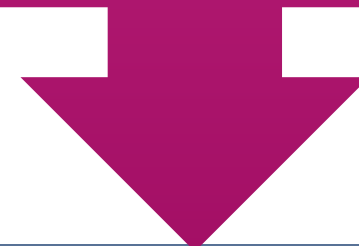


TABLE OF CONTENTS

Who Are We?	3
Purpose and Highlights	4
Demographic and Housing Characteristics	5
Economy	12
Job Postings	25
Takeaways	38
2025-2026 NJDOL Publications	42
Join Our List	43

**WHO ARE
WE?**

New Jersey Department of Labor
Office of Research and Information



Division of Economic and Demographic
Research

SDC

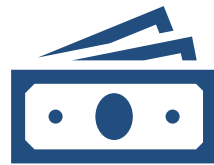
BLS

LMI

The purpose of this report is to highlight the key demographic and economic trends in the county



Monmouth County has a **higher median age and a lesser share of foreign-born residents** than New Jersey.



Monmouth County's real GDP ranks 8th among all New Jersey counties.



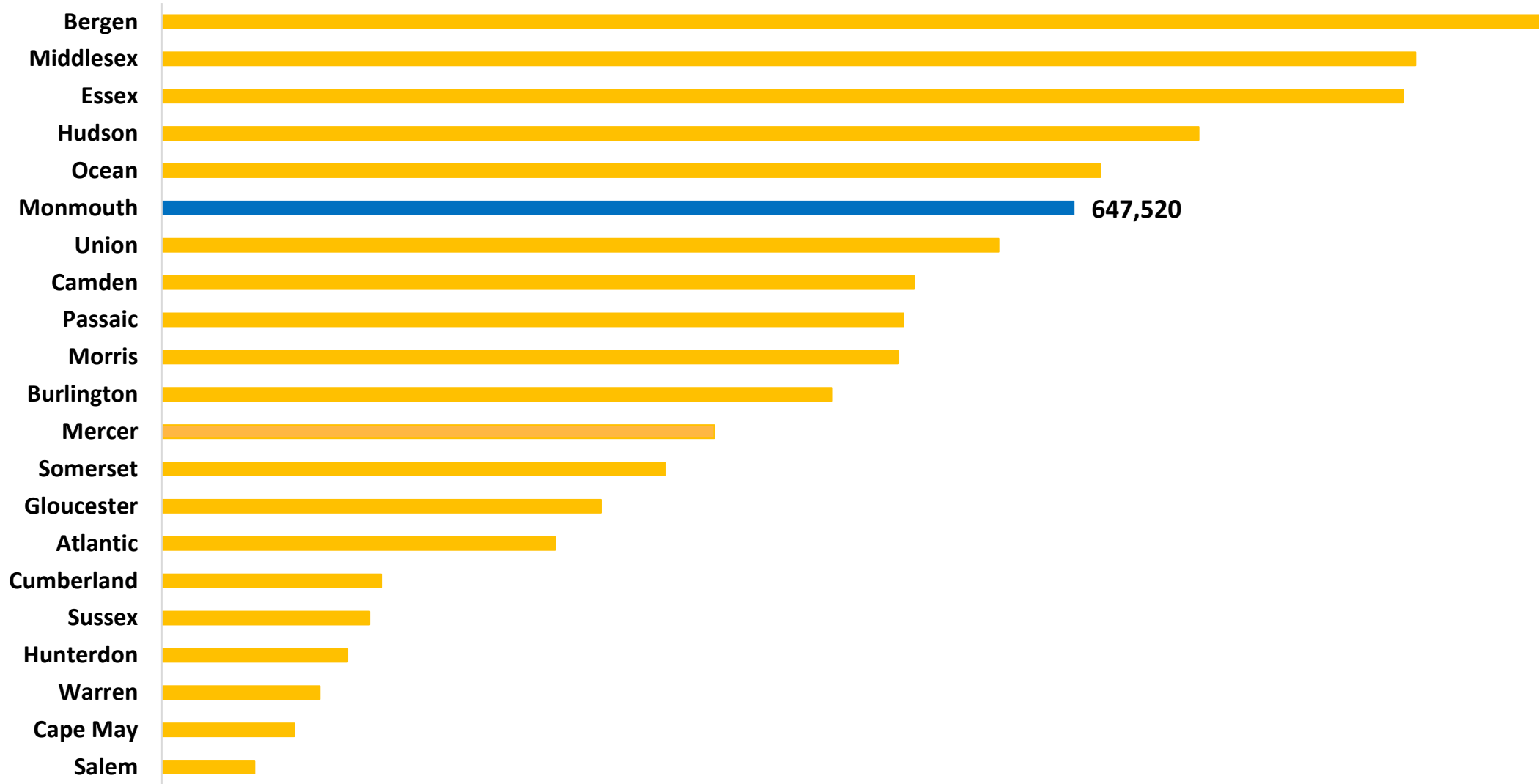
The **top** occupations in demand include Registered Nurses, Retail Salespersons, and First-Line Supervisors of Retail Sales Workers



DEMOGRAPHIC AND HOUSING CHARACTERISTICS

Monmouth County's population was 647,520 in 2024.

Population Estimates by County in New Jersey, 2024



Monmouth County has a higher median age and a lesser share of foreign-born residents than New Jersey.

Demographic Characteristics

Indicator	Monmouth County	New Jersey
Median Age	43.5	40.1
% of Older Population (65+)	20.4%	18.0%
% of Language Other Than English Spoken at Home	18.7%	34.3%
% of Foreign-Born Population	14.2%	25.0%
% of Hispanic or Latino (of Any Race)	13.3%	23.5%

The share of Monmouth County residents with a bachelor's degree or higher is 6.8 percentage points above the state.

Educational Attainment (Population 25 Years and Older)

Indicator	Monmouth County	New Jersey
High School or Equivalent Degree	21.0%	24.7%
Some College, No Degree	14.2%	14.5%
Associate's Degree	7.1%	6.6%
Bachelor's Degree or Higher	51.3%	44.5%
High School Degree or Higher	93.6%	90.3%

Monmouth County has a higher median household income and a lower poverty rate compared to the state.

Income & Poverty

Indicator	Monmouth County	New Jersey
Median Household Income	\$121,269	\$104,294
% of Poverty	6.7%	9.2%

Note: Median Household Income in the Past 12 Months (in 2023 Inflation-Adjusted Dollars)

Monmouth County residents pay higher rent and have a higher homeownership rate compared to the state.

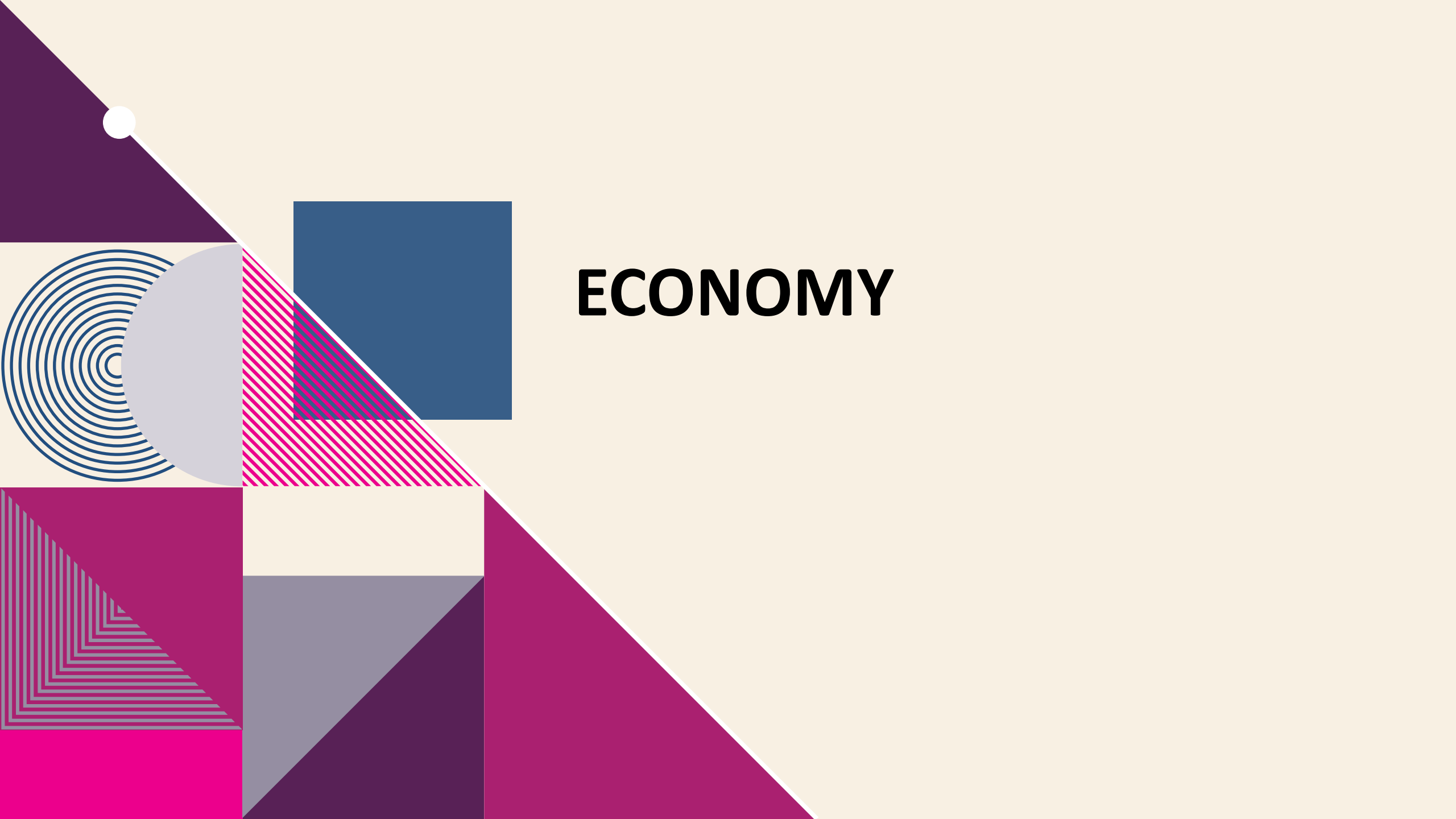
Housing Characteristics

Indicator	Monmouth County	New Jersey
Total Households	253,580	3,543,944
Median Gross Rent	\$1,856	\$1,800
Homeownership Rate	73.6%	63.9%
% of Housing Value of Owner Occupied (\geq\$300,000)	92.7%	80.7%

Monmouth County residents have longer commute times, and a higher percentage of remote workers compared to the state average.

Commuting Characteristics

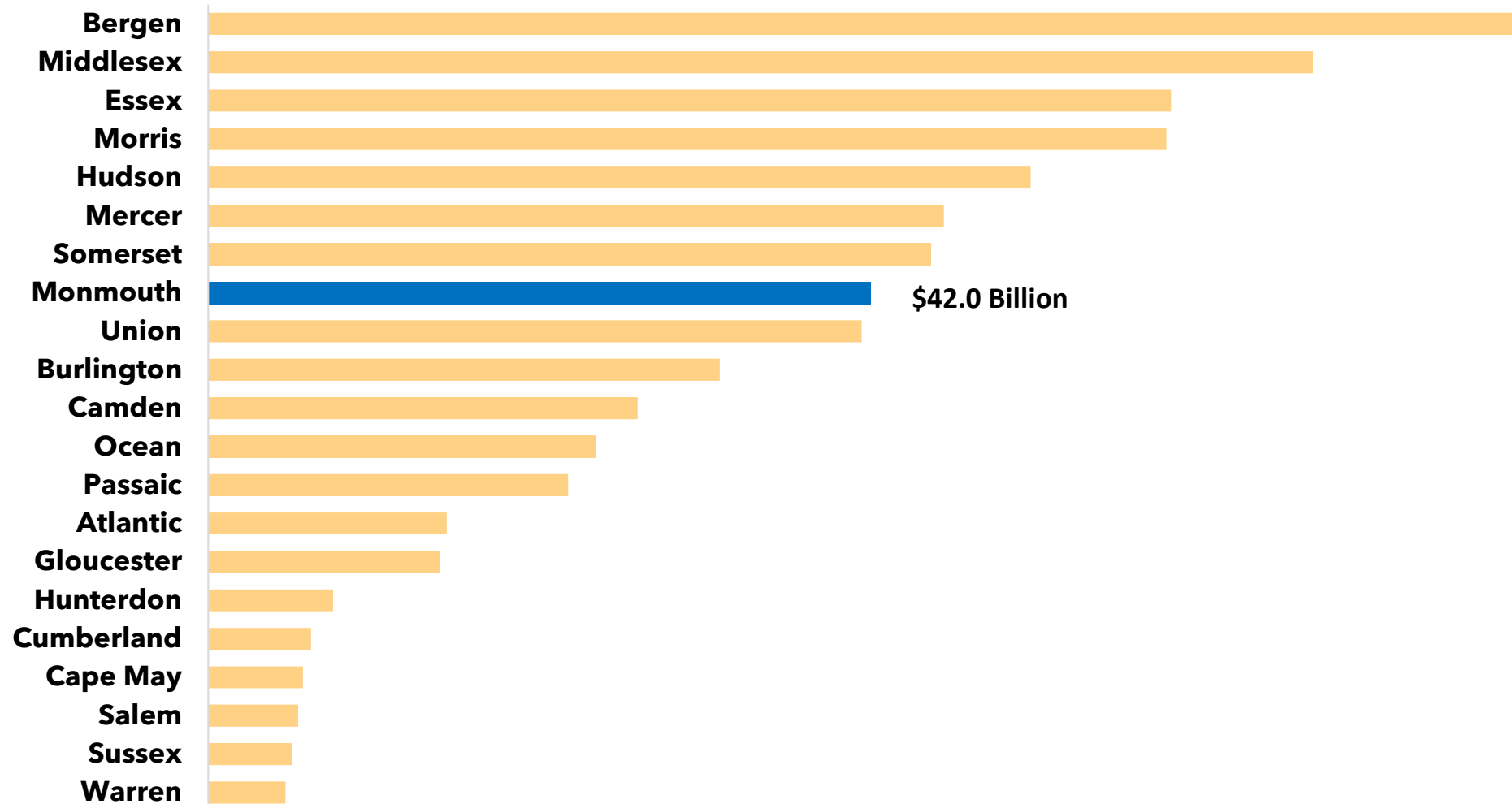
Indicator	Monmouth County	New Jersey
Average Travel Time to Work (in Minutes)	34.9	31.9
% of Public Transportation	6.8%	9.7%
% of Working From Home	15.6%	13.5%



ECONOMY

In 2024, Monmouth County's real GDP was \$42.0 billion, ranking 8th among all New Jersey counties.

Real Gross Domestic Product (GDP) by County in New Jersey, 2024





Establishments and Employment

Monmouth County

Source: Quarterly Census of Employment and Wages (QCEW) program, Q3 2024

The QCEW program produces quarterly and annual data on the number of establishments, total employment, and wages for workers covered by New Jersey unemployment insurance (UI) laws, as well as federal employees under the Unemployment Compensation for Federal Employees (UCFE) program. This data is published at various geographical and industry levels.

17.4% of Monmouth County establishments are in health care and social assistance.

Monmouth County Establishments, Ranked by Percent of the Total Establishments Private Ownerships

Industry	Total Number of Establishments	Total Number of Employees	% of Total Establishments
Health Care and Social Assistance	3,759	54,667	17.4%
Professional and Technical Services	2,696	19,228	12.5%
Retail Trade	2,372	36,014	11.0%
Construction	1,914	16,348	8.9%
Other Services, Ex. Public Admin	1,903	12,012	8.8%
Accommodation and Food Services	1,827	29,644	8.5%
Administrative and Waste Services	1,338	14,052	6.2%
Finance and Insurance	1,073	8,568	5.0%
Wholesale Trade	877	7,462	4.1%
Real Estate and Rental and Leasing	653	4,006	3.0%
Manufacturing	525	9,343	2.4%
Arts, Entertainment, and Recreation	486	8,623	2.3%
Transportation and Warehousing	402	5,469	1.9%
Educational Services	353	6,078	1.6%
Information	306	4,675	1.4%

Note: Full list of establishments in Monmouth County is available in [Appendix](#).

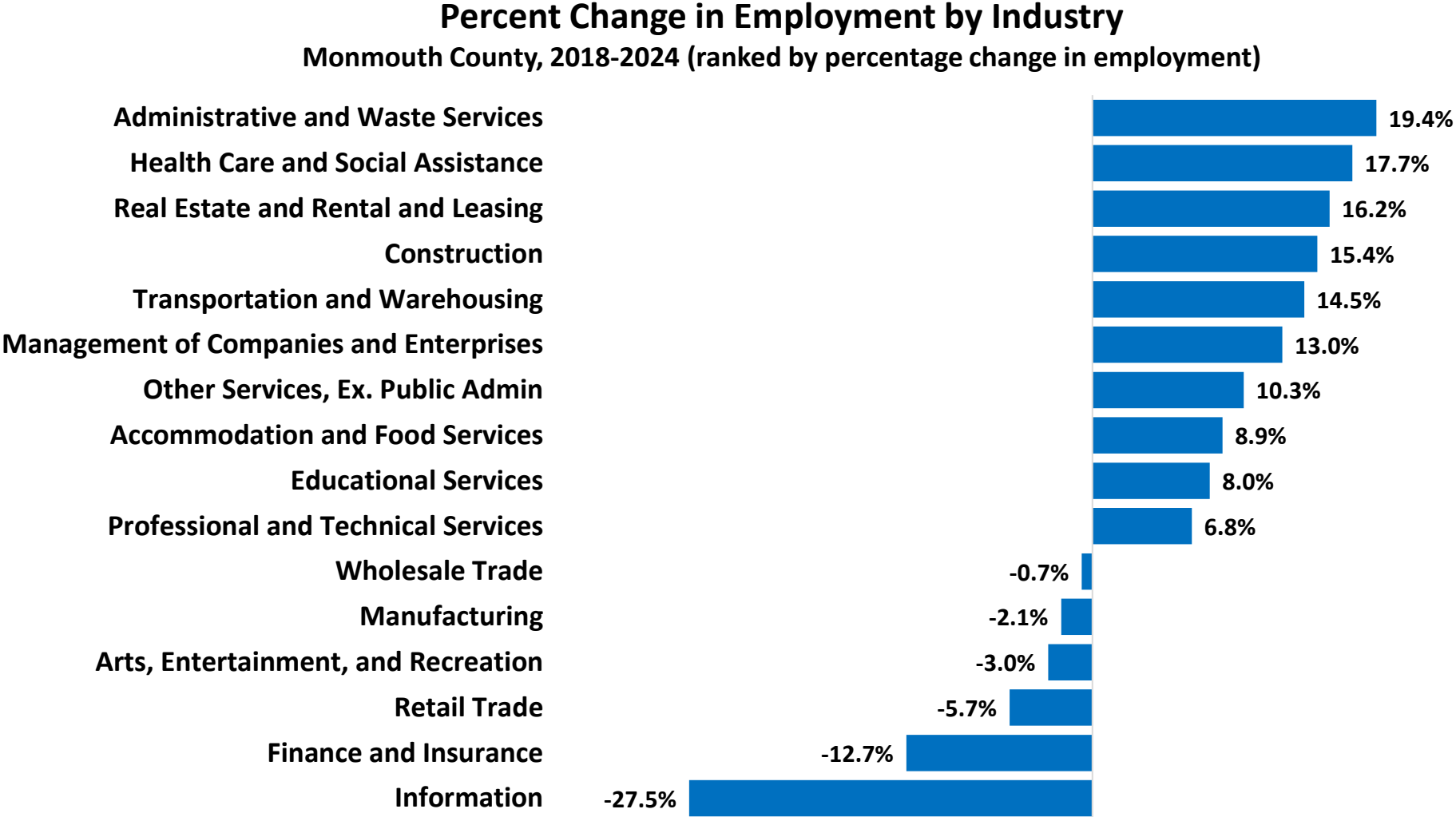
In Monmouth County, health care and social assistance has a higher employment share compared to state averages.

Employment by Private Service-Providing Industries Monmouth County vs. New Jersey, 2024

Industry	Monmouth County		New Jersey		Difference between
	Employment	% of Total	Employment	% of Total	
Construction	16,348	6.7%	164,014	4.5%	2.2%
Manufacturing	9,343	3.8%	253,054	6.9%	-3.0%
Wholesale Trade	7,462	3.1%	213,549	5.8%	-2.7%
Retail Trade	36,014	14.8%	427,521	11.6%	3.1%
Transportation and Warehousing	5,469	2.2%	233,943	6.4%	-4.1%
Information	4,675	1.9%	76,199	2.1%	-0.2%
Finance and Insurance	8,568	3.5%	189,987	5.2%	-1.7%
Real Estate and Rental and Leasing	4,006	1.6%	63,263	1.7%	-0.1%
Professional and Technical Services	19,228	7.9%	336,105	9.1%	-1.3%
Management of Companies and Enterprises	3,940	1.6%	82,588	2.2%	-0.6%
Administrative and Waste Services	14,052	5.8%	286,750	7.8%	-2.0%
Health Care and Social Assistance	54,667	22.4%	656,356	17.8%	4.6%
Arts, Entertainment, and Recreation	8,623	3.5%	73,699	2.0%	1.5%
Accommodation and Food Services	29,644	12.2%	328,905	8.9%	3.2%
Other Services, Ex. Public Admin	12,012	4.9%	144,086	3.9%	1.0%

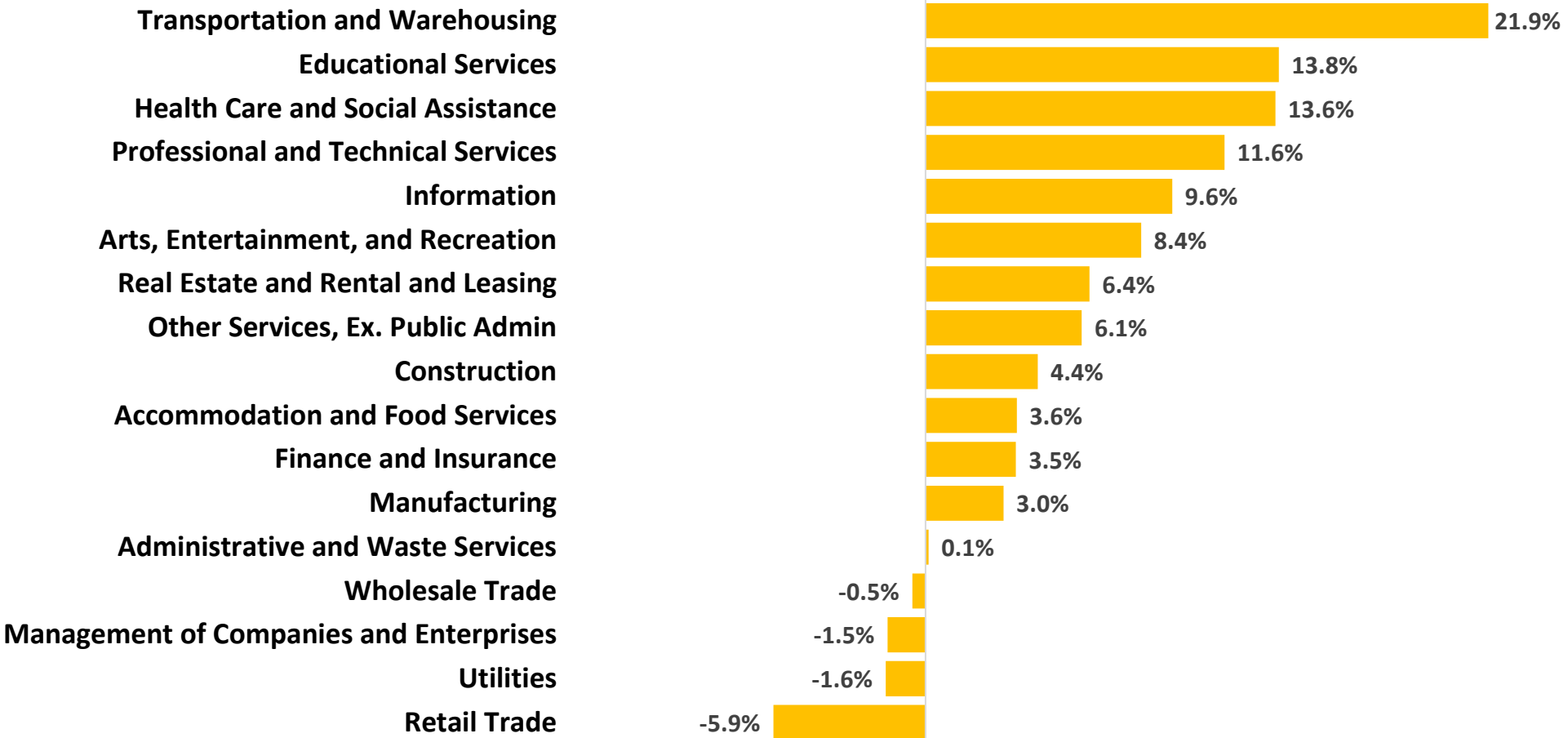
Note: Mercer county represents Trenton-Princeton MSA in the Current Employment Statistics. Full list of employment by industry is available in [Appendix](#).

Between 2018 and 2024, administrative and waste services saw the largest employment growth in Monmouth County, increasing by 19.4%.



Transportation and warehousing saw strong growth in New Jersey, expanding by 21.9% from 2018 to 2024.

Percent Change in Employment by Industry
New Jersey, 2018-2024 (ranked by percentage change in employment)





Unemployment Trend

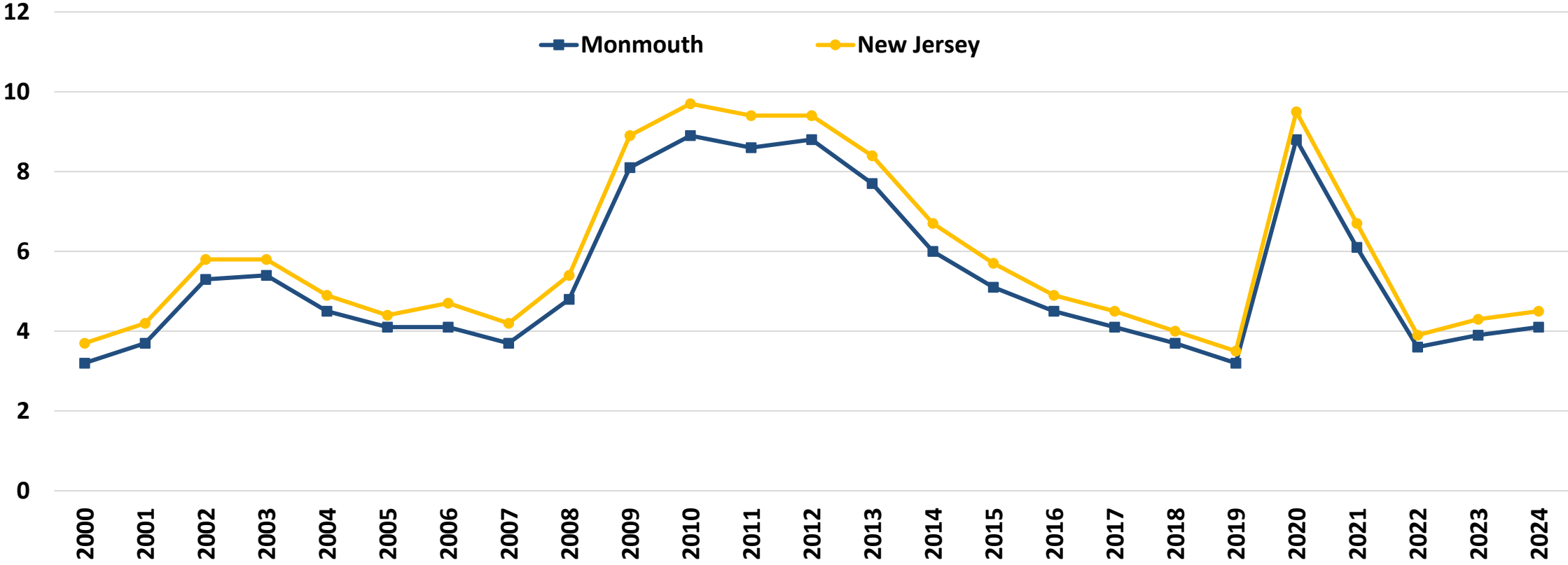
Monmouth County vs. New Jersey

Source: Local Area Unemployment Statistics (LAUS), 2024

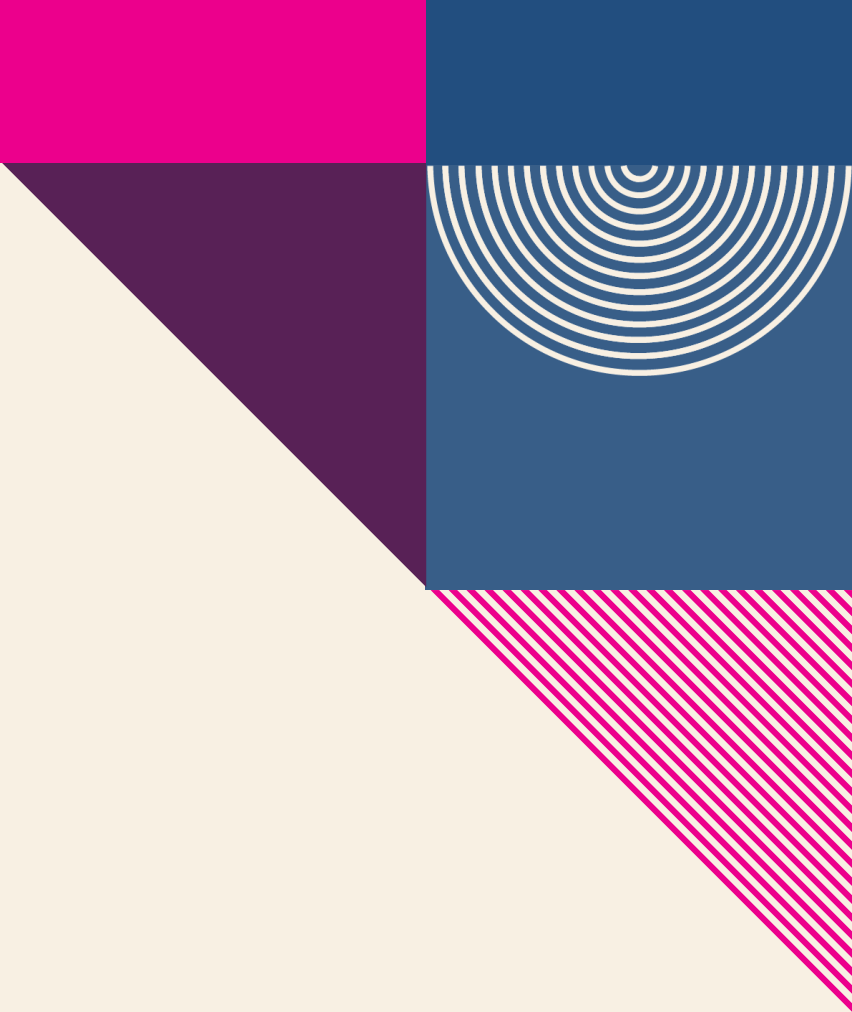
The Local Area Unemployment Statistics (LAUS) program produces monthly and annual employment, unemployment, and labor force data for Census regions and divisions, States, counties, metropolitan areas, and many cities, by place of residence.

The unemployment rate in Monmouth County follows state trends but stays slightly below the New Jersey average.

Unemployment Rate Monmouth County vs. New Jersey, 2000-2024



Source: ORI-EDR, Local Area Unemployment Statistics (LAUS) program, 2024



Occupational Employment and Wages

Monmouth County vs. New Jersey

Source: 2024 National Occupational Employment and Wage Estimates (OEWS)

The Occupational Employment and Wage Statistics (OEWS) program produces employment, and wage estimates annually for approximately 830 occupations. These estimates are available for the nation, for individual states, and for metropolitan and nonmetropolitan areas; national occupational estimates for specific industries are also available.

22.8% of Monmouth County's total employment is concentrated in the top 10 occupations.

Top 10 Occupations, Ranked by Employment Monmouth County, 2024

Occupation	Employment	% of Total Employment	Median Hourly Wage
Home Health and Personal Care Aides	7,920	2.9%	\$18.81
Retail Salespersons	7,830	2.9%	\$17.13
Cashiers	7,510	2.7%	\$16.25
Fast Food and Counter Workers	7,000	2.6%	\$16.23
Registered Nurses	6,640	2.4%	\$51.33
Waiters and Waitresses	5,930	2.2%	\$20.37
Office Clerks, General	5,210	1.9%	\$23.56
Receptionists and Information	5,010	1.8%	\$18.69
Stockers and Order Fillers	4,980	1.8%	\$17.40
General and Operations Managers	4,310	1.6%	\$64.78
Top 10 Occupations, Total	62,340	22.8%	
All Occupations, Total	273,920	100.0%	\$25.88

Note: OEWS collects the data for 2024.

In New Jersey, the top 10 occupations account for 20.1% of total employment.

Top 10 Occupations, Ranked by Employment New Jersey, 2024

Occupation	Employment	% of Total Employment	Median Hourly Wage
Home Health and Personal Care Aides	105,460	2.5%	\$17.83
Laborers and Freight, Stock, and Material Movers	101,720	2.4%	\$18.78
Registered Nurses	95,150	2.2%	\$49.39
Cashiers	93,270	2.2%	\$15.96
Retail Salespersons	87,760	2.1%	\$17.13
Fast Food and Counter Workers	86,980	2.0%	\$16.01
Packers and Packagers, Hand	76,060	1.8%	\$20.56
Office Clerks, General	71,140	1.7%	\$23.07
Stockers and Order Fillers	70,780	1.7%	\$17.69
Janitors and Cleaners	67,590	1.6%	\$17.94
Top 10 Occupations, Total	855,910	20.1%	
All Occupations, Total	4,250,430	100.0%	\$27.51

Note: OEWS collects the data for 2024.

Between 2022 and 2032 in Monmouth County, the health care support occupational group is projected to see the largest growth (+2,850).

**Actual and Projected Employment by Occupation Group, Monmouth County
Top 10 Occupation Groups Ranked by 2032 Employment Projections**

Occupational Group	2022 Actual	2032 Projected	Net Change	Percent Change
Office and Administrative Support	38,450	37,450	-1,000	2.6%
Sales and Related	29,250	29,350	100	0.3%
Food Preparation and Serving Related	26,100	27,850	1,750	6.8%
Transportation and Material Moving	23,650	25,900	2,250	9.6%
Management	21,250	23,350	2,100	10.1%
Healthcare Practitioners and Technical	20,350	22,900	2,550	12.3%
Educational Instruction and Library	19,450	20,750	1,300	6.6%
Business and Financial Operations	17,100	18,200	1,100	6.4%
Healthcare Support	16,000	18,850	2,850	17.8%
Personal Care and Service	13,550	15,550	2,000	15.0%

Note: Employment data for Top 15 occupational groups is available in the [Appendix](#).



JOB POSTINGS



Job Postings

Monmouth County vs. New Jersey

Source: Lightcast

Lightcast collect raw data on postings from more than 160,000 online sources, then synthesize and interpret those findings to provide meaningful insight in near real time. Job posting analytics can identify supply and demand for workers, skills, and jobs all over the world, as well as important contextual details like compensation trends.

Limitations: One job posting does not necessarily equal one actual job opening. Some companies may post jobs to signal growth to investors or advertise positions in multiple states. Additionally, a decline in job postings doesn't always indicate reduced demand; it could simply mean that companies have already filled their positions and are no longer actively recruiting. We treat this data as directional, offering insights into employer demand rather than exact measurements.



Top 5 Hiring Companies Monmouth County, 2024

- **Hackensack Meridian Health**
- **RWJ Barnabas Health**
- **CentraState Healthcare System**
- **Monmouth University**
- **Walgreens Boots Alliance**

Top 5 Occupations Monmouth County, 2024

- Registered Nurses
- Retail Salespersons
- First-Line Supervisors of Retail Sales Workers
- Home Health Aides
- Patient Representatives





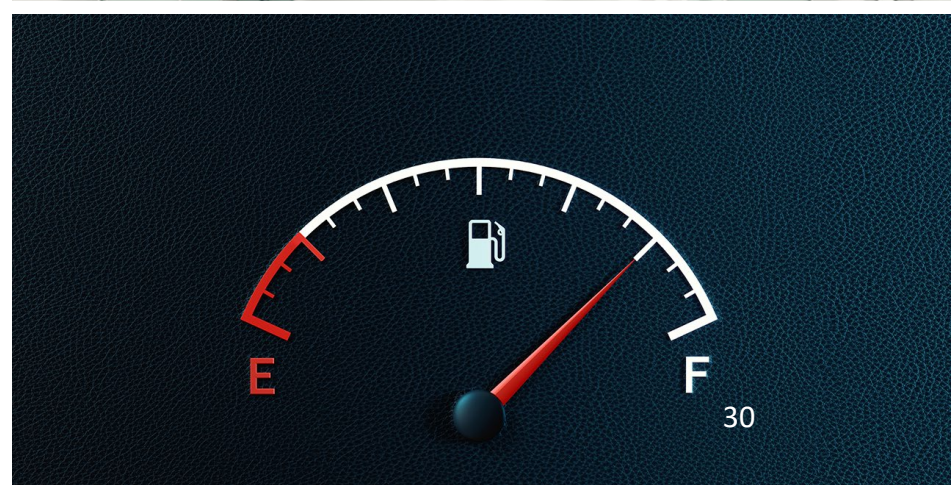
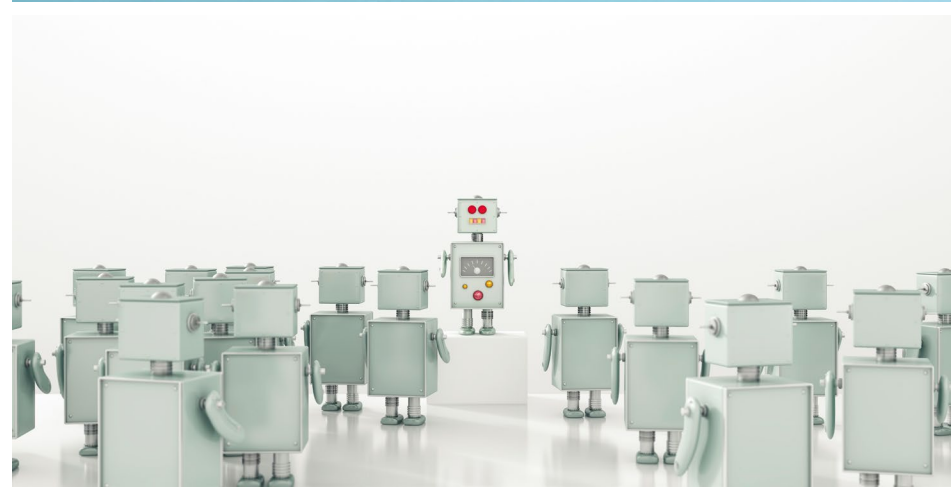
Top 5 Specialized Skills Monmouth County, 2024

- Nursing
- Merchandising
- Selling Techniques
- Billing
- Marketing



Top 5 Software Skills

- Microsoft Office (e.g., Excel, and PowerPoint)
- Programming Language (e.g., SQL, Python, and R)
- Google Workspace
- Epic EMR
- QuickBooks

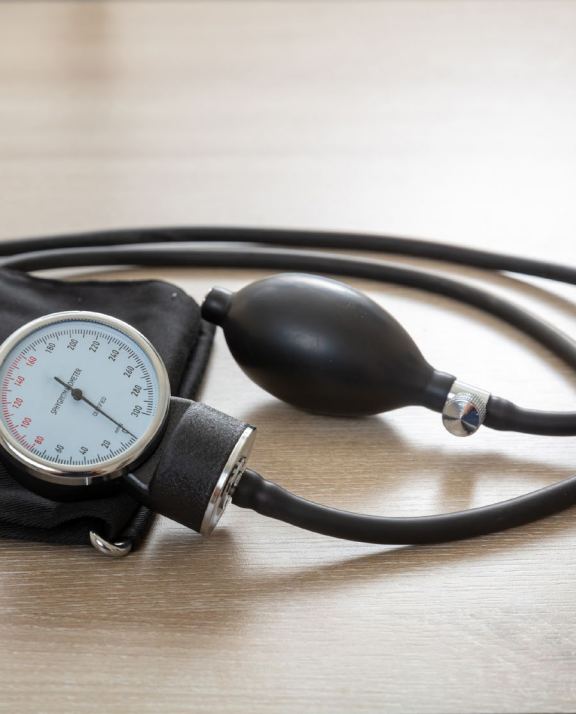




Top 5 Soft Skills Monmouth County, 2024

- **Communication**
- **Customer Service**
- **Sales**
- **Management**
- **Leadership**





Top 5 Certificates

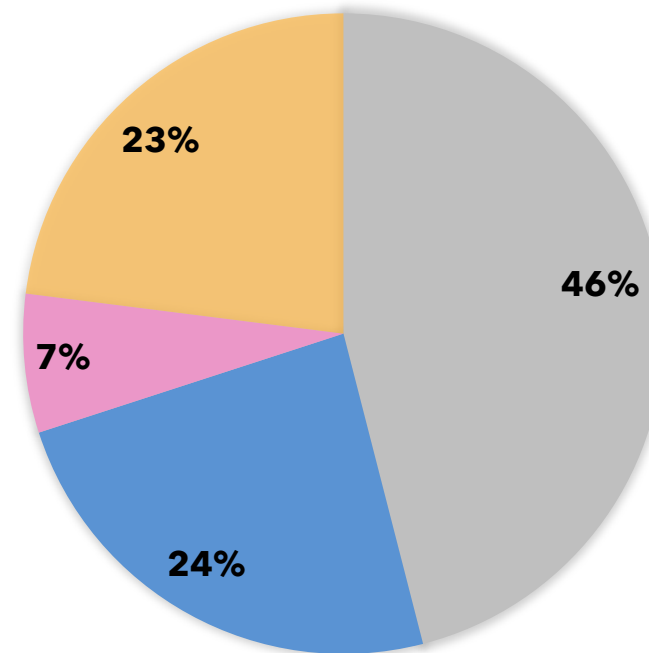
- **Valid Driver's License**
- **Registered Nurse (RN)**
- **Basic Life Support (BLS) Certification**
- **Cardiopulmonary Resuscitation (CPR) Certification**
- **Advanced Cardiovascular Life Support (ACLS) Certification**



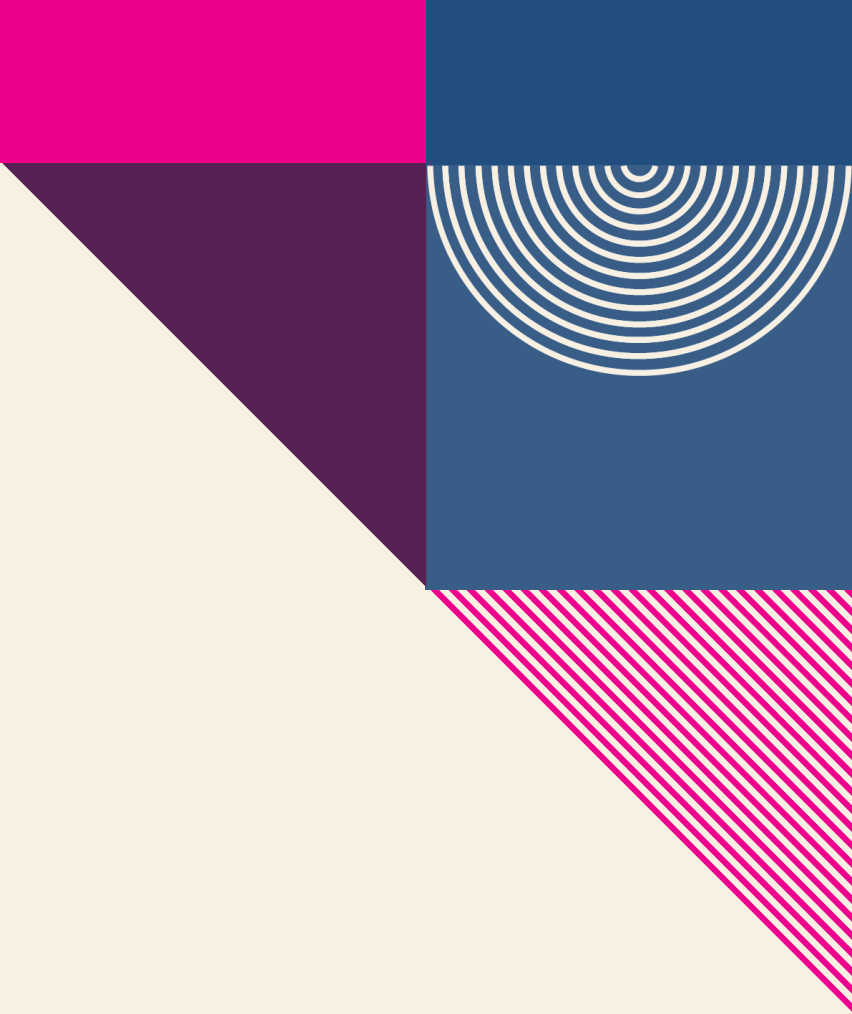
23 percent of job postings in Monmouth County require a bachelor's degree or higher.

Job Postings by Educational Attainment
Monmouth County, 2024

■ No education listed ■ High school or GED ■ Associate's degree ■ Bachelor's degree or higher



Note: Bachelor's degree or higher includes Bachelor's Degree, Master, Ph.D. or Professional Degree. While 46% of job postings did not specify educational attainment, this does not necessarily mean there are no requirements for it.



AI-related Job Postings

Monmouth County vs. New Jersey

Source: Lightcast

To identify AI-related job postings, ORI-EDR compiled a curated list of 130 specific terms. A job listing is deemed AI-related if any of these terms appear in the skills section. A job listing is classified as AI-related if any of these terms are present in the skills section. This includes, but is not limited to, terms such as "AI/ML Inference," "Conversational AI," "Machine Learning Algorithms," "Supervised Learning," and "Deep Learning."

Limitations: One job posting does not necessarily equal one actual job opening. Some companies may post jobs to signal growth to investors or advertise positions in multiple states. Additionally, a decline in job postings doesn't always indicate reduced demand; it could simply mean that companies have already filled their positions and are no longer actively recruiting. We treat this data as directional, offering insights into employer demand rather than exact measurements.

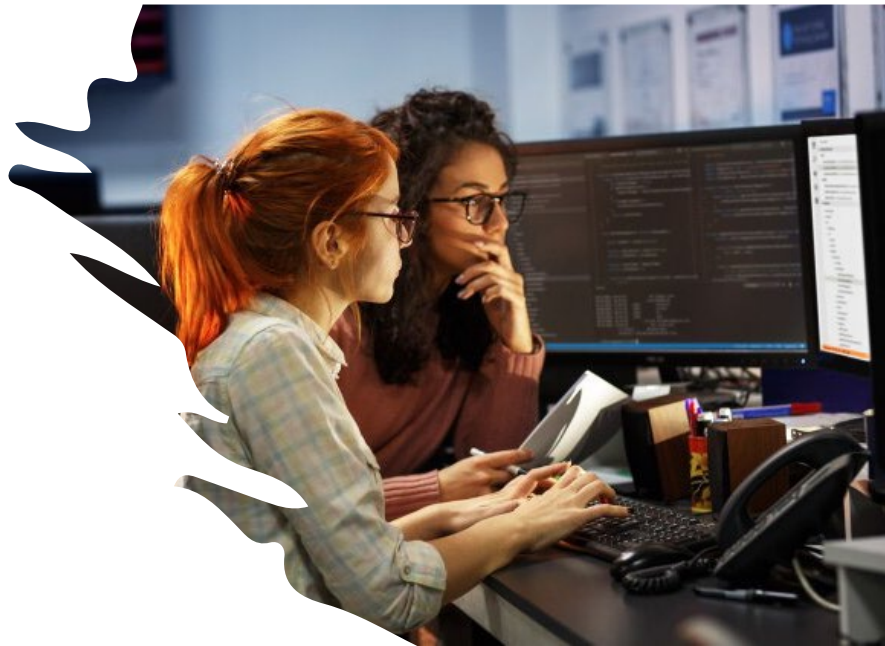
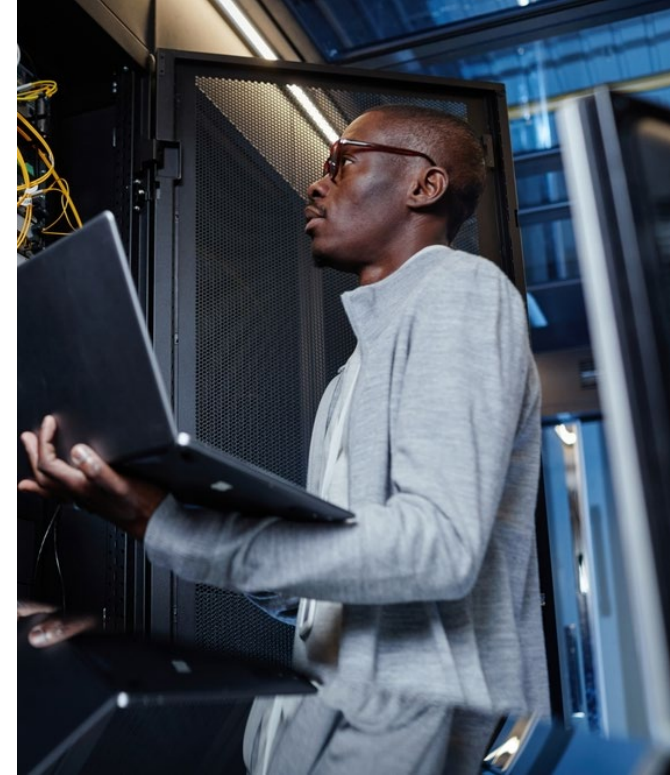


Top 5 AI-related Hiring Companies Monmouth County, 2024

- Hackensack Meridian Health
- AT&T
- RWJ Barnabas Health
- New Jersey Resources
- Guardian Life

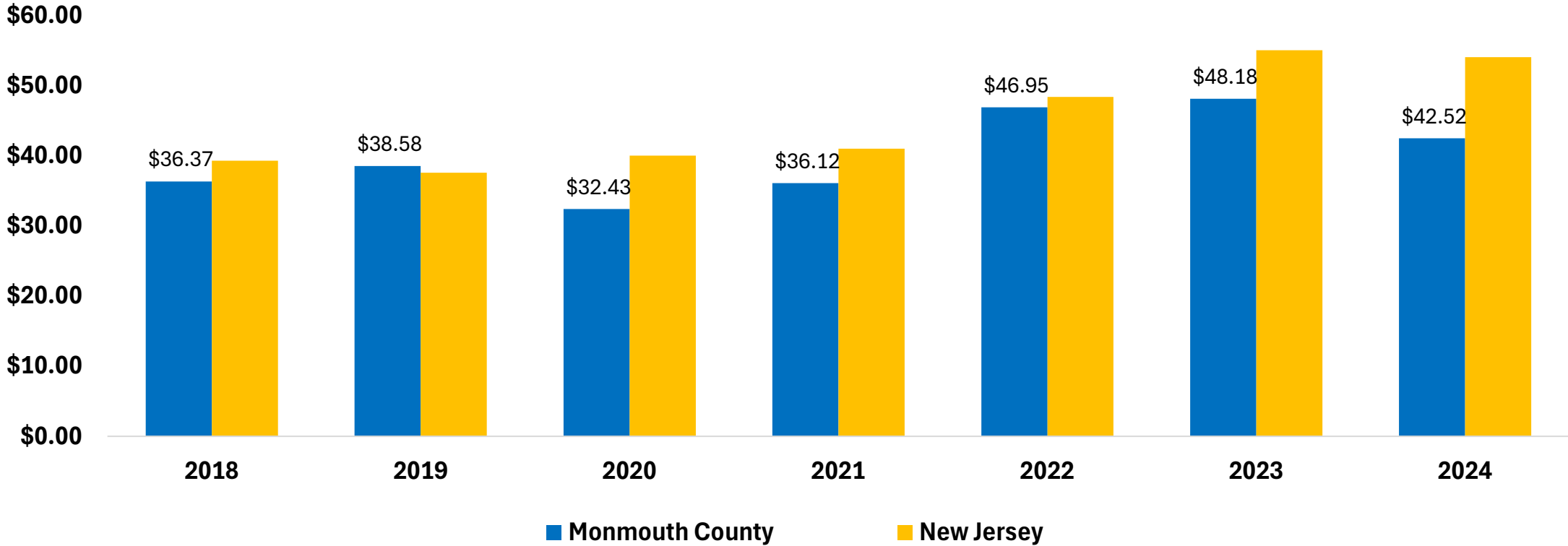
Top 5 AI-related Occupations Monmouth County, 2024

- Software Developers
- Project Management Specialists
- Marketing Managers
- Computer Network Architects
- Medical and Health Services Managers



In Monmouth County, the median hourly wage for AI-related job postings is typically lower than the state.

Median Hourly Wage in AI-related Job Postings, Monmouth County vs. New Jersey, 2018-2024





TAKEAWAYS



- **Key Economic and Workforce Insights: Monmouth County**
 - **Demographics**
 - Monmouth County's population is older and less diverse than New Jersey.
 - The proportion of Monmouth County residents with a bachelor's degree or higher is 6.8 percentage points above the state.

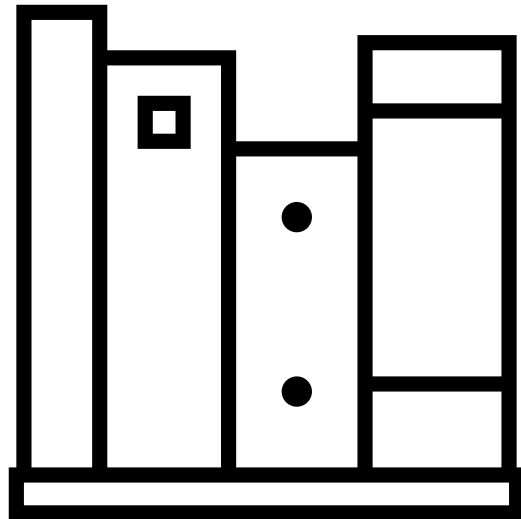


- **Key Economic and Workforce Insights: Monmouth County (Continued)**

- **Industry Composition**

- 17.4% of business establishments are in health care and social assistance.
- The health care and social assistance sector has a higher employment share compared to the state.

2025 Report Overview and Subscription Information



This report was prepared by the Office of Research and Information, Division of Economic & Demographic Research. This division collects and disseminates vital data on employers, employees, and population demographics.

2025-2026 NJDOL PUBLICATIONS

- [Real-Time Insights: Analysis of Job Posting Data in New Jersey for 2025](#) (January 2026)
- [Identifying and Tracking Emerging Occupations in New Jersey's Key Sectors](#) (January 2026)
- [New Jersey's Manufacturing Sector](#) (Winter 2025)
- [County Brief: Labor Market Facts](#) (December 2025)
- [Labor Market Spotlight - Celebrating New Jersey's Veterans](#) (Issue No. 28, Volume 3: November 2025)
- [Labor Market Spotlight - New Jersey's Waterways Help Keep the Economy Flowing](#) (Issue No. 27, Volume 3: October 2025)
- [New Jersey Employment Situation](#) (September 2025)
- [Job Openings and Labor Turnover Survey \(JOLTS\)](#) (August 2025)
- [New Jersey Building Permits](#) (August 2025)
- [New Jersey's Life Sciences Sector](#) (Fall 2025)
- [Labor Market Spotlight - The Industries Powering New Jersey's Special Moments](#) (Issue No. 26, Volume 3: August 2025)
- [New Jersey's Health Care Sector](#) (June 2025)
- [New Jersey Business Employment Dynamics](#) (May 2025)
- [Survey of Occupational Injuries and Illnesses \(SOII\)](#) (April 2025)
- [Labor Market Spotlight - Fortune 500 Companies](#) (Issue No. 25, Volume 3: March 2025)
- [Labor Market Spotlight - Young Adult Workforce](#) (Issue No. 24, Volume 3: January 2025)

JOIN OUR LIST

Link: nj.gov/labor/subscribetoori





THANK YOU!



APPENDIX

Monmouth County Establishments, Ranked by Percent of the Total Establishments Private

Industry	Total Number of Establishments	Total Number of Employees	% of Total Establishments
Health Care and Social Assistance	3,759	54,667	17.4%
Professional and Technical Services	2,696	19,228	12.5%
Retail Trade	2,372	36,014	11.0%
Construction	1,914	16,348	8.9%
Other Services, Ex. Public Admin	1,903	12,012	8.8%
Accommodation and Food Services	1,827	29,644	8.5%
Administrative and Waste Services	1,338	14,052	6.2%
Finance and Insurance	1,073	8,568	5.0%
Wholesale Trade	877	7,462	4.1%
Unclassified	848	933	3.9%
Real Estate and Rental and Leasing	653	4,006	3.0%
Manufacturing	525	9,343	2.4%
Arts, Entertainment, and Recreation	486	8,623	2.3%
Transportation and Warehousing	402	5,469	1.9%
Educational Services	353	6,078	1.6%
Information	306	4,675	1.4%
MGT of Companies and Enterprises	91	3,940	0.4%
Agriculture, Forestry, Fishing & Hunting	80	763	0.4%
Utilities	54	2,003	0.3%
Total	21,562	243,841	100.0%

Note: An establishment is considered unknown when there is insufficient detail to accurately determine its primary industry at that location. It will be assigned an industry code once the program can verify its main business activity.

**Actual and Projected Employment by Occupation Group, Monmouth County Top 15 Occupations ranked by 2032
Employment Projections**

Occupational Group	2022 Actual	2032 Projected	Net Change	Percent Change
Office and Administrative Support	38,450	37,450	-1,000	-2.6%
Sales and Related	29,250	29,350	100	0.3%
Food Preparation and Serving Related	26,100	27,850	1,750	6.7%
Transportation and Material Moving	23,650	25,900	2,250	9.5%
Management	21,250	23,350	2,100	9.9%
Healthcare Practitioners and Technical	20,350	22,900	2,550	12.5%
Educational Instruction and Library	19,450	20,750	1,300	6.7%
Business and Financial Operations	17,100	18,200	1,100	6.4%
Healthcare Support	16,000	18,850	2,850	17.8%
Personal Care and Service	13,550	15,550	2,000	14.8%
Construction and Extraction	13,000	13,800	800	6.2%
Installation, Maintenance, and Repair	10,850	11,800	950	8.8%
Computer and Mathematical	9,900	11,550	1,650	16.7%
Building and Grounds Cleaning and Maintenance	9,550	10,200	650	6.8%
Production	8,850	9,100	250	2.8%