

# Morris County

Division of Economic and Demographic Research

Office of Research & Information

New Jersey Department of Labor and Workforce Development

February 2026

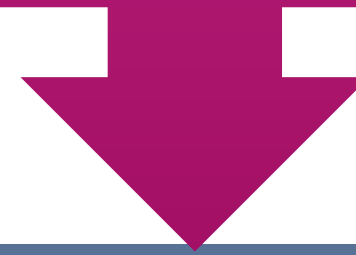


# TABLE OF CONTENTS

<b>Who Are We?</b>	<b>3</b>
<b>Purpose and Highlights</b>	<b>4</b>
<b>Demographic and Housing Characteristics</b>	<b>5</b>
<b>Economy</b>	<b>12</b>
<b>Job Postings</b>	<b>25</b>
<b>Takeaways</b>	<b>38</b>
<b>2025-2026 NJDOL Publications</b>	<b>44</b>
<b>Join Our List</b>	<b>45</b>

**WHO ARE  
WE?**

New Jersey Department of Labor  
Office of Research and Information



Division of Economic and Demographic  
Research

**SDC**

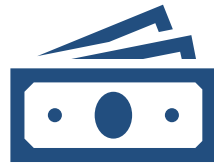
**BLS**

**LMI**

# The purpose of this report is to highlight the key demographic and economic trends in the county



Morris County's population is **younger and more diverse** than the state average, with a slightly higher proportion of residents holding a bachelor's degree or higher.



Morris County's real GDP ranks 3rd among all New Jersey counties. **Unemployment** follows state trends but stays slightly below the New Jersey average.



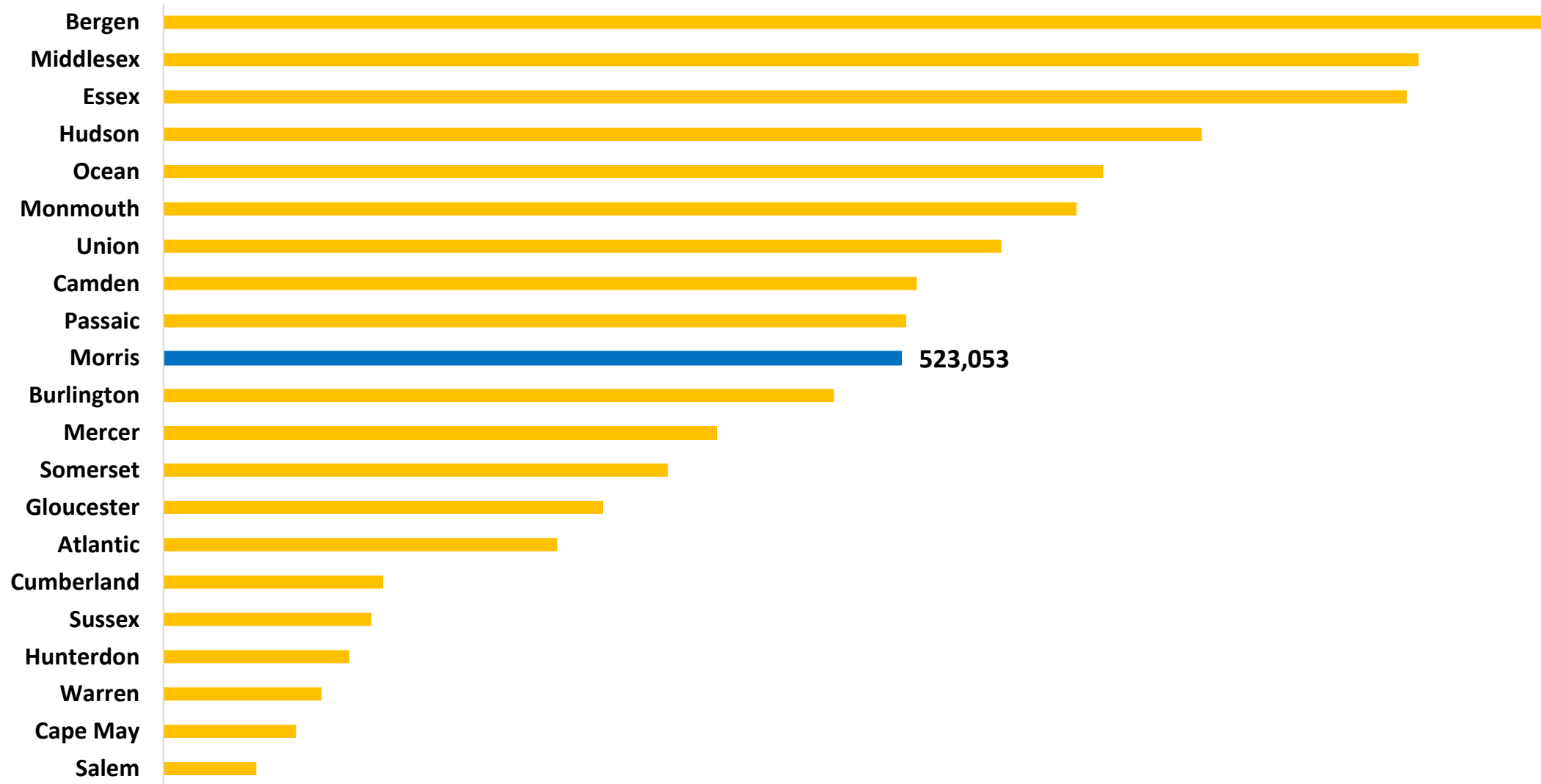
The **top** occupations in demand include Registered Nurses, Retail Salespersons, Software Developers, Medical and Health Services Managers, General and Operations Managers.



# DEMOGRAPHIC AND HOUSING CHARACTERISTICS

# Morris County's population was 523,053 in 2024.

Population Estimates by County in New Jersey, 2024



**Morris County's population is older and less diverse than the state overall.**

### **Demographic Characteristics**

<b>Indicator</b>	<b>Morris County</b>	<b>New Jersey</b>
<b>Median Age</b>	42.8	40.1
<b>% of Older Population (65+)</b>	19.1%	18.0%
<b>% of Language Other Than English Spoken at Home</b>	28.3%	34.3%
<b>% of Foreign-Born Population</b>	20.7%	25.0%
<b>% of Hispanic or Latino (of Any Race)</b>	16.9%	23.5%

The share of Morris County residents with a bachelor’s degree or higher is 8.1 percentage points above the state average.

Educational Attainment (Population 25 Years and Older)

Indicator	Morris County	New Jersey
High School or Equivalent Degree	18.6%	24.7%
Some College, No Degree	11.6%	14.5%
Associate's Degree	6.3%	6.6%
Bachelor's Degree or Higher	34.5%	26.4%
High School Degree or Higher	94.6%	90.4%



Morris County has a higher median household income and a lower poverty rate compared to the state overall.

Income & Poverty

Indicator	Morris County	New Jersey
Median Household Income	\$137,623	\$104,294
% of Poverty	4.3%	9.2%

*Note:* Median Household Income in the Past 12 Months (in 2024 Inflation-Adjusted Dollars)

Morris County residents pay higher rent and have a higher homeownership rate compared to the state average.

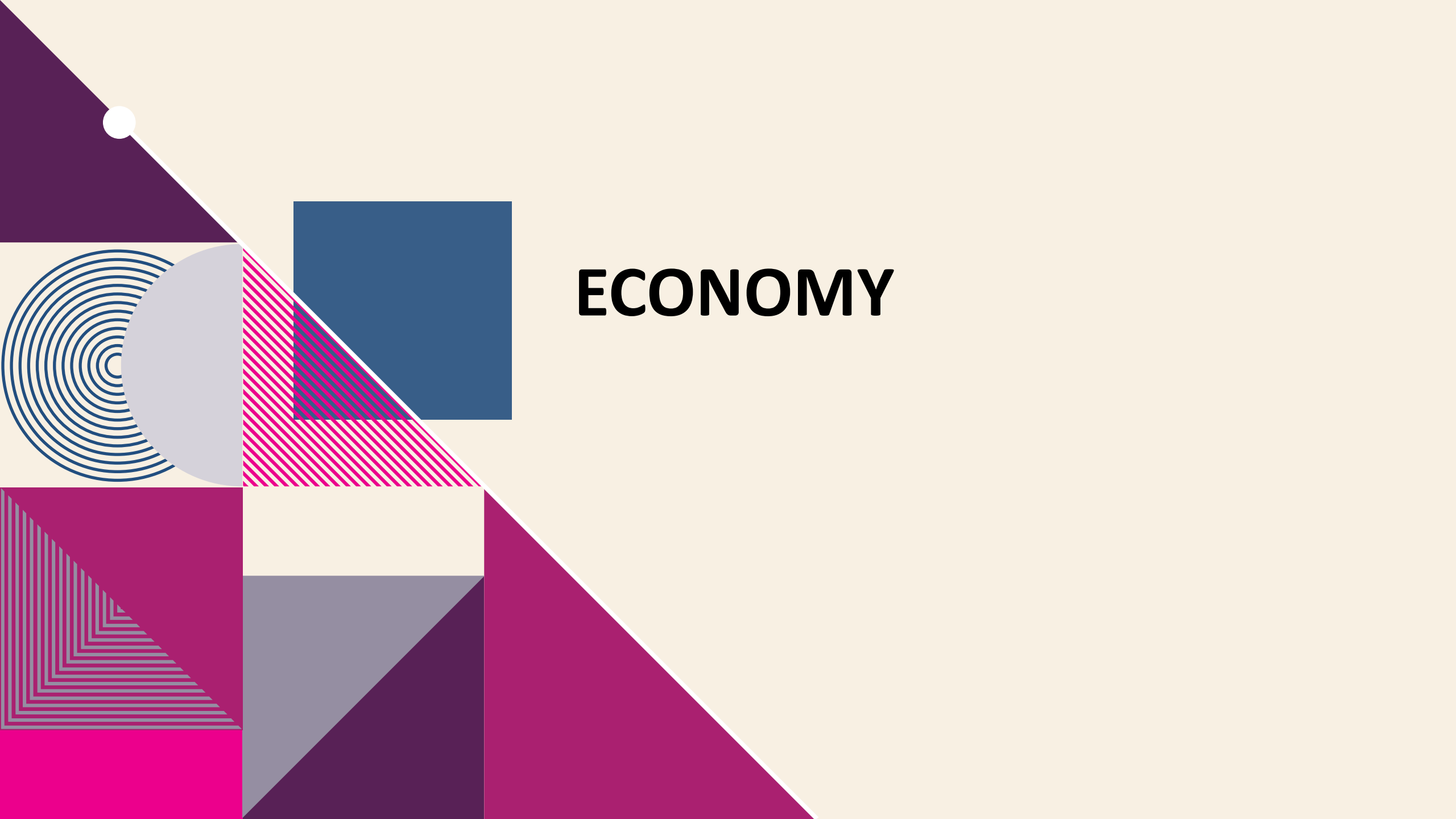
Housing Characteristics

Indicator	Morris County	New Jersey
Total Households	193,869	3,543,944
Median Gross Rent	\$1,896	\$1,800
Homeownership Rate	72.8%	63.9%
% of Housing Value of Owner Occupied (≥\$300,000)	93.5%	80.7%

Morris County residents have shorter commute times, and a higher percentage of remote workers compared to the state average.

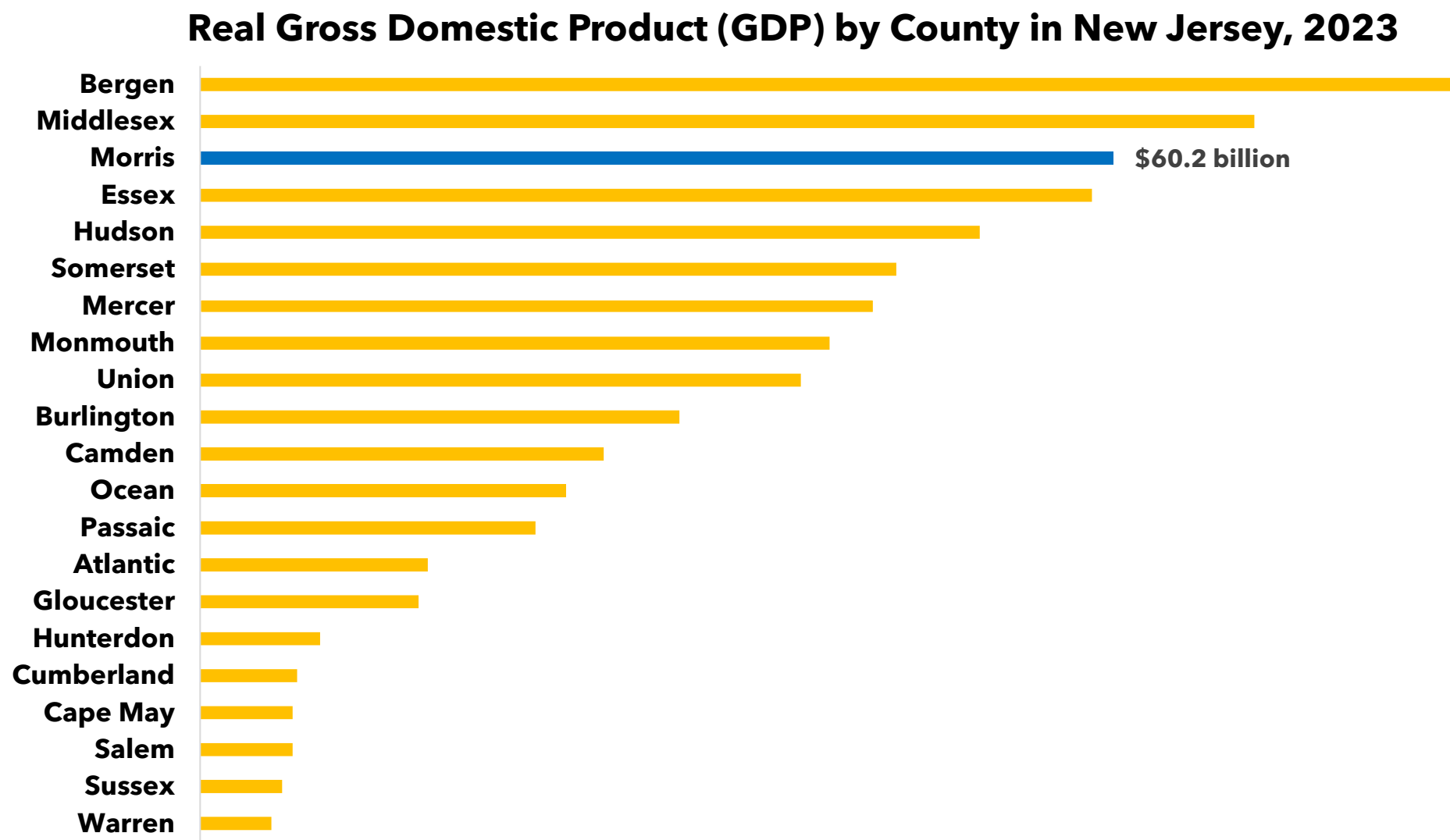
Commuting Characteristics

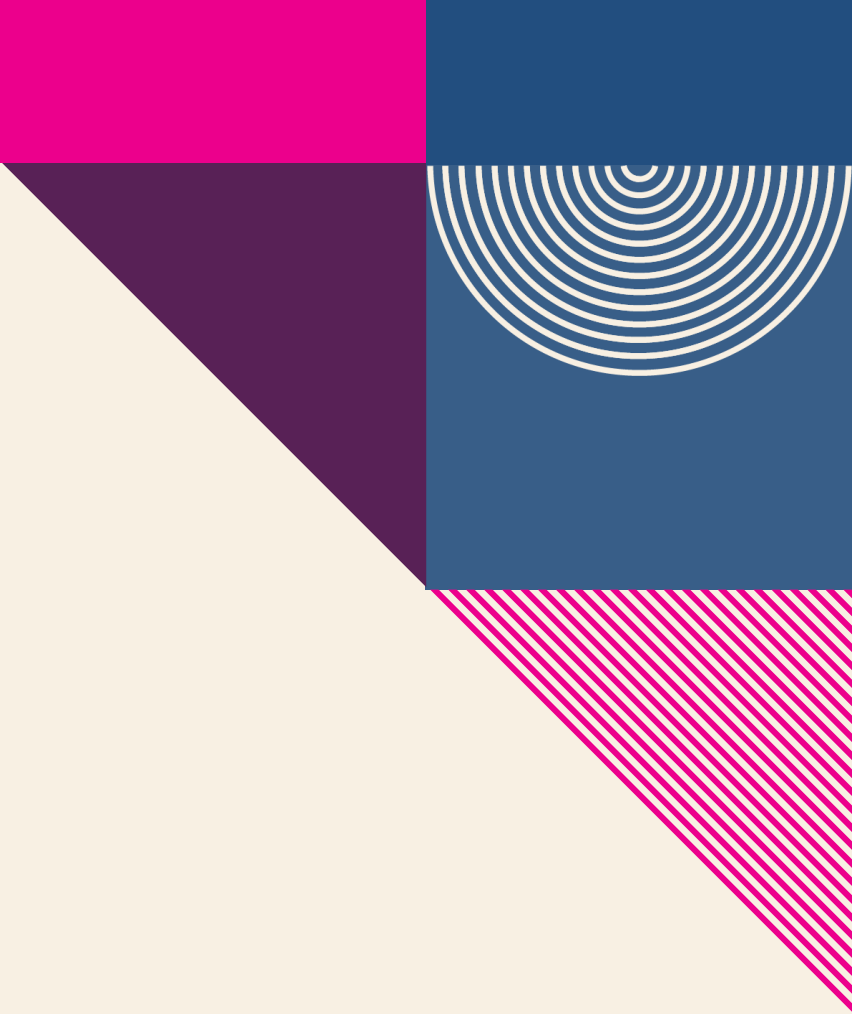
Indicator	Morris County	New Jersey
Average Travel Time to Work (in Minutes)	31.6	31.9
% of Public Transportation	3.9%	9.7%
% of Working From Home	16.7%	13.5%



# ECONOMY

In 2023, Morris County’s real GDP was \$60.2 billion, ranking 3rd among all New Jersey counties.





# Establishments and Employment

## Morris County

Source: Quarterly Census of Employment and Wages (QCEW) program, 2024

The QCEW program produces quarterly and annual data on the number of establishments, total employment, and wages for workers covered by New Jersey unemployment insurance (UI) laws, as well as federal employees under the Unemployment Compensation for Federal Employees (UCFE) program. This data is published at various geographical and industry levels.

## 15.1% of Morris County establishments are in the health care and social assistance.

Morris County Establishments, Ranked by Percent of the Total\*

### Private Ownerships

Industry	Establishments	Employees	% of Private Establishments
Health care and social assistance	2,668	44,467	15.1%
Professional and technical services	2,518	39,724	14.2%
Other services, except public administration	1,639	10,888	9.3%
Retail trade	1,567	27,125	8.9%
Construction	1,482	12,188	8.4%
Administrative and waste services	1,354	23,802	7.7%
Accommodation and food services	1,321	20,989	7.5%
Finance and insurance	942	17,958	5.3%
Wholesale trade	900	13,574	5.1%
Manufacturing	612	18,144	3.5%
Real estate and rental and leasing	580	4,093	3.3%
Transportation and warehousing	366	8,370	2.1%
Educational services	311	6,729	1.8%
Information	235	3,198	1.3%
Management of companies and enterprises	125	11,963	0.7%
Agriculture, forestry, fishing and hunting	45	611	0.3%
Utilities	32	626	0.2%

Note: Full list of establishments in Mercer County is available in [Appendix](#).

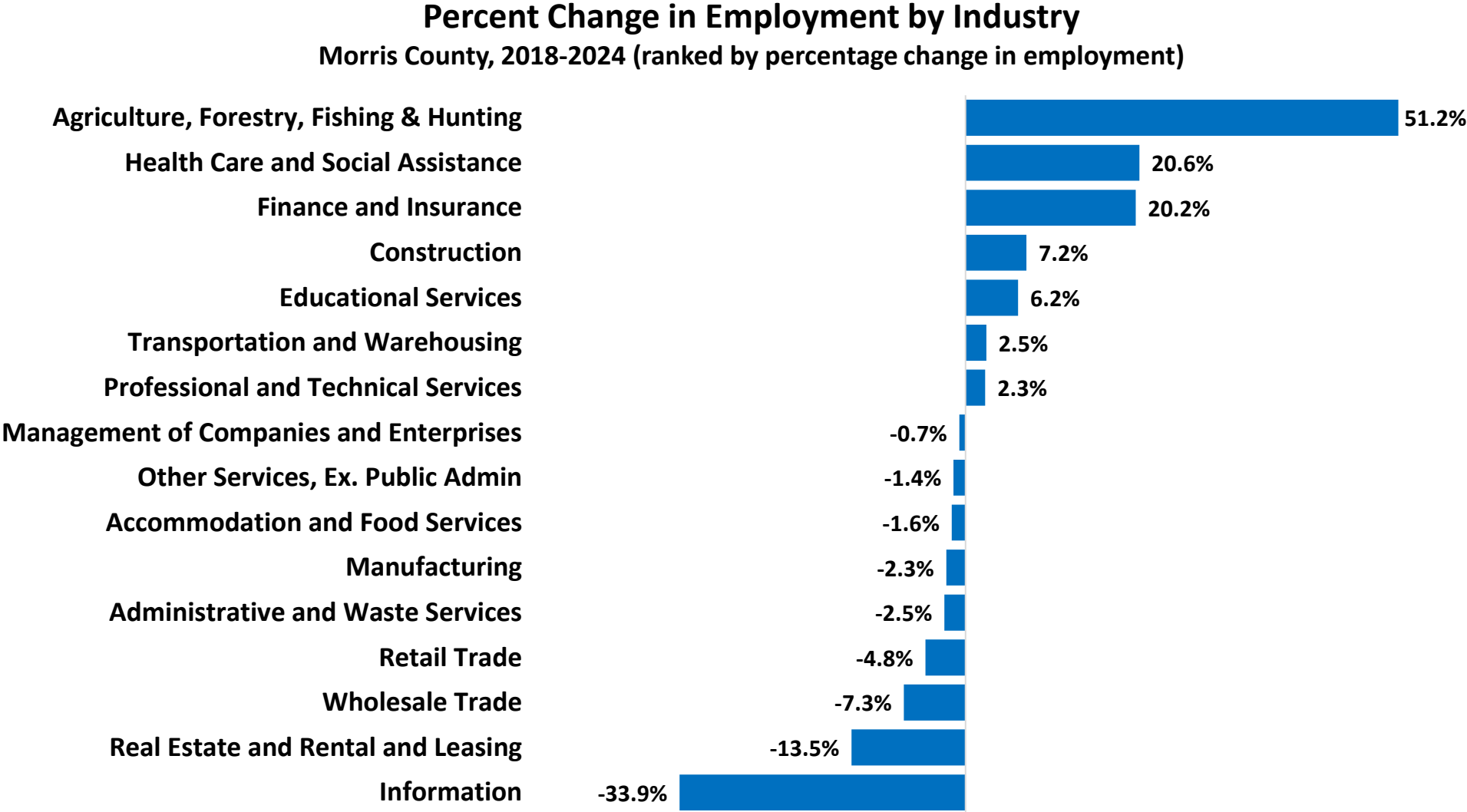
# In Morris County, private professional and technical services have higher employment shares compared to state average.

## Employment by Private Service-Providing Industries Morris County vs. New Jersey, 2024

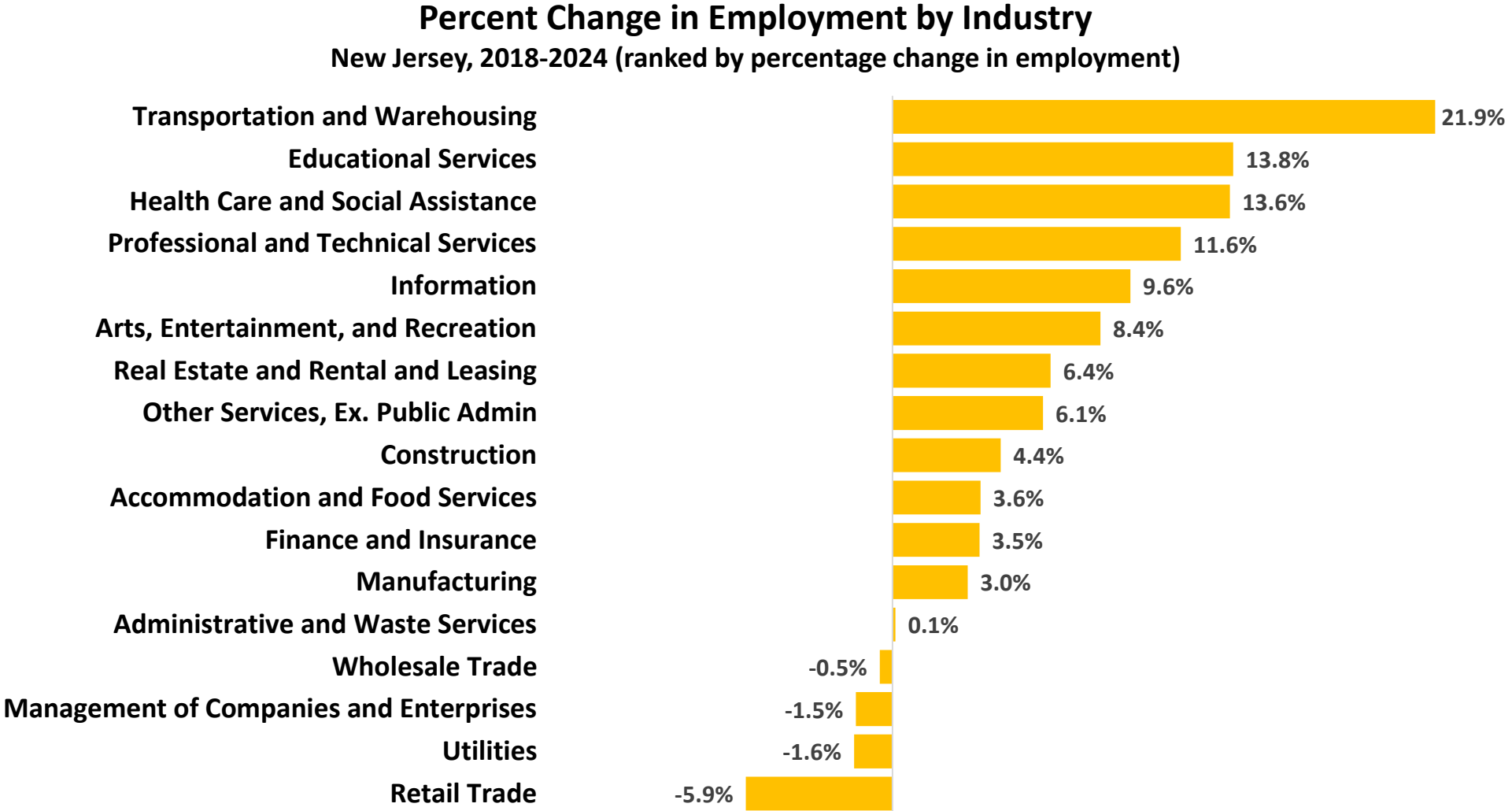
Industry	Morris County		New Jersey		Difference between (2) and (4)
	Employment	% of Total	Employment	% of Total	
Professional and Technical Services	39,724	14.7%	336,105	9.1%	5.6%
Management of Companies and Enterprises	11,963	4.4%	82,588	2.2%	2.2%
Finance and Insurance	17,958	6.6%	189,987	5.2%	1.5%
Administrative and Waste Services	23,802	8.8%	286,750	7.8%	1.0%
Other Services, Ex. Public Admin	10,888	4.0%	144,086	3.9%	0.1%
Construction	12,188	4.5%	164,014	4.5%	0.0%
Educational Services	6,729	2.5%	90,018	2.4%	0.0%
Manufacturing	18,144	6.7%	253,054	6.9%	-0.2%
Real Estate and Rental and Leasing	4,093	1.5%	63,263	1.7%	-0.2%
Wholesale Trade	13,574	5.0%	213,549	5.8%	-0.8%
Information	3,198	1.2%	76,199	2.1%	-0.9%
Accommodation and Food Services	20,989	7.8%	328,905	8.9%	-1.2%
Health Care and Social Assistance	44,467	16.4%	656,356	17.8%	-1.4%
Retail Trade	27,125	10.0%	427,521	11.6%	-1.6%
Transportation and Warehousing	8,370	3.1%	233,943	6.4%	-3.3%

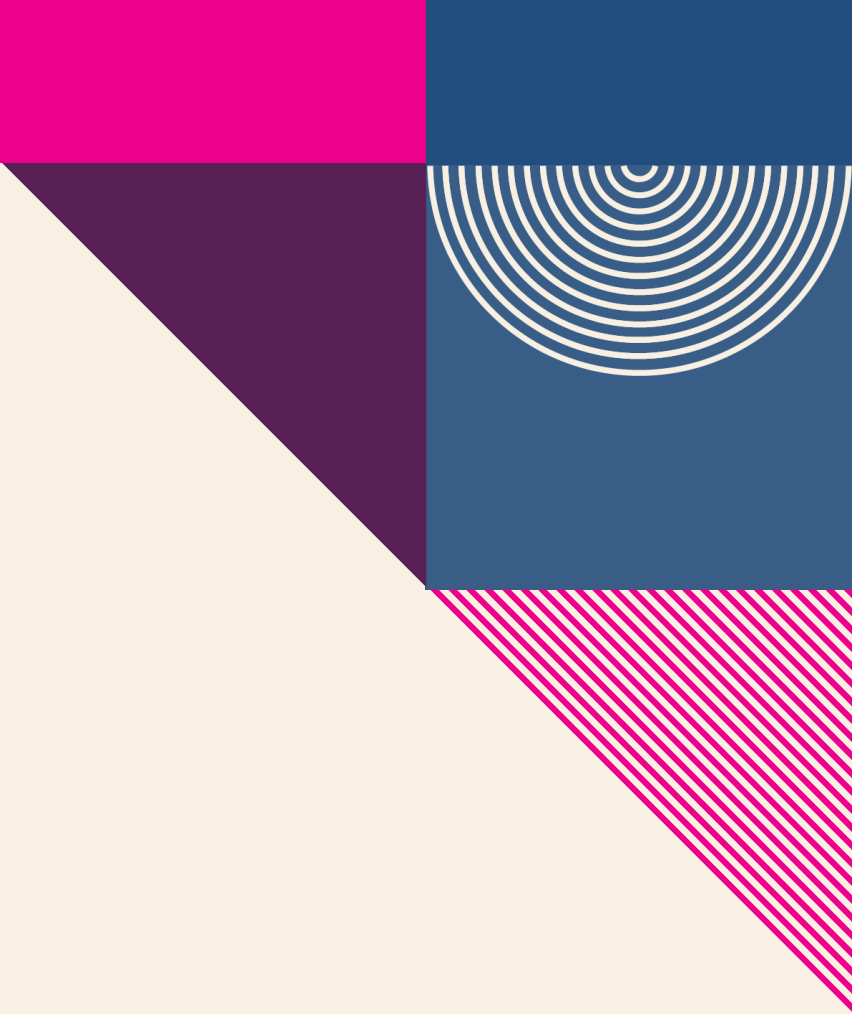


**Between 2018 and 2024, agriculture, forestry and fishing & hunting saw the largest employment growth in Morris County, increasing by 51.2%.**



**Transportation, warehousing, and utilities saw strong growth in New Jersey, expanding by 21.9% from 2018 to 2024.**





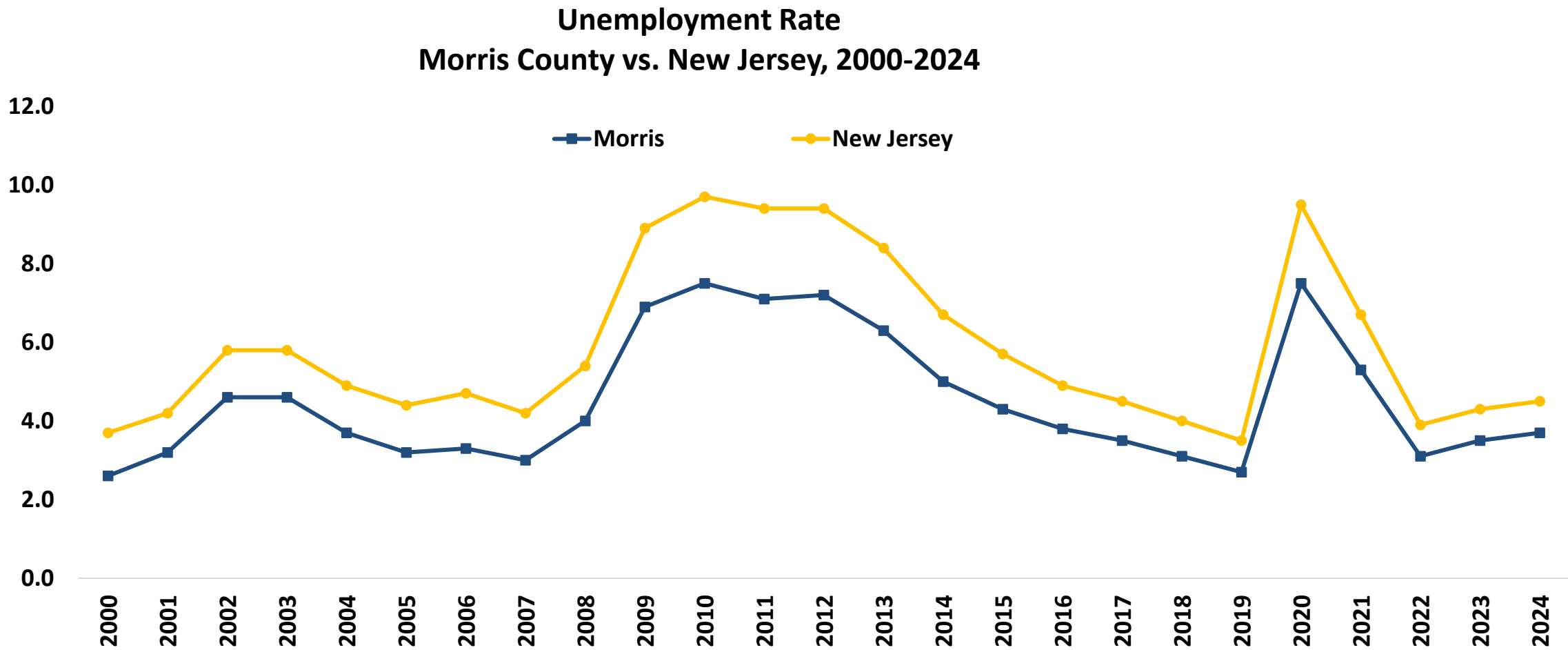
# Unemployment Trend

## Morris County vs. New Jersey

Source: Local Area Unemployment Statistics (LAUS), 2024

The Local Area Unemployment Statistics (LAUS) program produces monthly and annual employment, unemployment, and labor force data for Census regions and divisions, States, counties, metropolitan areas, and many cities, by place of residence.

# Unemployment in Morris County follows state trends but stays slightly below the New Jersey average.





# Occupational Employment and Wages

## Morris County vs. New Jersey

Source: 2024 National Occupational Employment and Wage Estimates (OEWS)

The Occupational Employment and Wage Statistics (OEWS) program produces employment, and wage estimates annually for approximately 830 occupations. These estimates are available for the nation, for individual states, and for metropolitan and nonmetropolitan areas; national occupational estimates for specific industries are also available.

**19.5% of Morris County's total employment is concentrated in the top 10 occupations.**

**Top 10 Occupations, Ranked by Employment  
Morris County, 2024**

Occupation	Employment	% of Total Employment	Median Hourly Wage
Janitors and Cleaners, Except Maids and Housekeeping Cleaners	7,310	2.5%	\$17.78
Registered Nurses	7,310	2.5%	\$49.36
Cashiers	5,670	2.0%	\$16.43
Retail Salespersons	5,530	1.9%	\$17.39
Fast Food and Counter Workers	5,390	1.9%	\$16.27
Home Health and Personal Care Aides	5,190	1.8%	\$18.47
Laborers and Freight, Stock, and Material Movers, Hand	5,140	1.8%	\$18.32
Accountants and Auditors	5,050	1.7%	\$49.32
Software Developers	5,040	1.7%	\$64.68
Customer Service Representatives	4,810	1.7%	\$22.57
<b>Top 10 Occupations, Total</b>	<b>56,440</b>	<b>19.5%</b>	
<b>All Occupations, Total</b>	<b>300,620</b>	<b>100.0%</b>	<b>\$30.00</b>

*Note:* OES collects the data for 2024

In New Jersey, the top 10 occupations account for 20% of total employment.

**Top 10 Occupations, Ranked by Employment  
New Jersey, 2024**

Occupation	Employment	% of Total Employment	Median Hourly Wage
Home Health and Personal Care Aides	105,460	2.5%	\$17.83
Laborers and Freight, Stock, and Material Movers	101,720	2.4%	\$18.78
Registered Nurses	95,150	2.2%	\$49.39
Cashiers	93,270	2.2%	\$15.96
Retail Salespersons	87,760	2.1%	\$17.13
Fast Food and Counter Workers	86,980	2.0%	\$16.01
Packers and Packagers, Hand	76,060	1.8%	\$20.56
Office Clerks, General	71,140	1.7%	\$23.07
Stockers and Order Fillers	70,780	1.7%	\$17.69
Janitors and Cleaners	67,590	1.6%	\$17.94
<b>Top 10 Occupations, Total</b>	<b>855,910</b>	<b>20.1%</b>	
<b>All Occupations, Total</b>	<b>4,250,430</b>	<b>100.0%</b>	<b>\$27.51</b>

Note: OEWS collects the data for 2024.

**Between 2022 and 2032 in Morris County, computer and mathematical occupation group are projected to see the largest growth (+2,700).**

**Actual and Projected Employment by Occupation Group, Morris County**  
**Top 10 Occupation groups ranked by 2032 Employment Projections**

<b>Occupational Group</b>	<b>2022 Actual</b>	<b>2032 Projected</b>	<b>Net Change</b>	<b>Percent Change</b>
<b>Computer and Mathematical</b>	17,800	20,500	2,700	15.0%
<b>Management</b>	29,650	32,000	2,350	7.8%
<b>Healthcare Practitioners and Technical</b>	18,950	20,900	1,950	10.2%
<b>Healthcare Support</b>	12,450	14,300	1,850	14.7%
<b>Personal Care and Service</b>	11,300	13,050	1,750	15.5%
<b>Transportation and Material Moving</b>	29,550	31,200	1,650	5.6%
<b>Food Preparation and Serving Related</b>	18,600	20,150	1,550	8.5%
<b>Business and Financial Operations</b>	29,000	30,450	1,450	5.0%
<b>Educational Instruction and Library</b>	18,050	18,800	750	4.2%
<b>Installation, Maintenance, and Repair</b>	10,750	11,300	550	4.9%

*Note:* Employment data for Top 15 occupational groups is available in the [Appendix](#).



An abstract geometric design on the left side of the page. It features a dark purple triangle in the top-left corner with a small white circle. Below it is a light grey semi-circle next to a series of concentric blue circles. To the right of these is a blue square. Further down is a pink square with diagonal lines, and below that is a solid pink square. At the bottom left is a dark purple triangle. The background is a light beige color.

# **JOB POSTINGS**



# Job Postings

## Morris County vs. New Jersey

Source: Lightcast

Lightcast collect raw data on postings from more than 160,000 online sources, then synthesize and interpret those findings to provide meaningful insight in near real time. Job posting analytics can identify supply and demand for workers, skills, and jobs all over the world, as well as important contextual details like compensation trends.

Limitations: One job posting does not necessarily equal one actual job opening. Some companies may post jobs to signal growth to investors or advertise positions in multiple states. Additionally, a decline in job postings doesn't always indicate reduced demand; it could simply mean that companies have already filled their positions and are no longer actively recruiting. We treat this data as directional, offering insights into employer demand rather than exact measurements.



**accenture**



## Top 5 Hiring Companies Morris County, 2024

- Atlantic Health System
- Accenture
- Novartis
- Deloitte
- PricewaterhouseCoopers

## Top 5 Occupations Morris County, 2024

- Registered Nurses
- Retail Salespersons
- Software Developers
- Medical and Health Services Managers
- General and Operations Managers







## **Top 5 Specialized Skills Morris County, 2024**

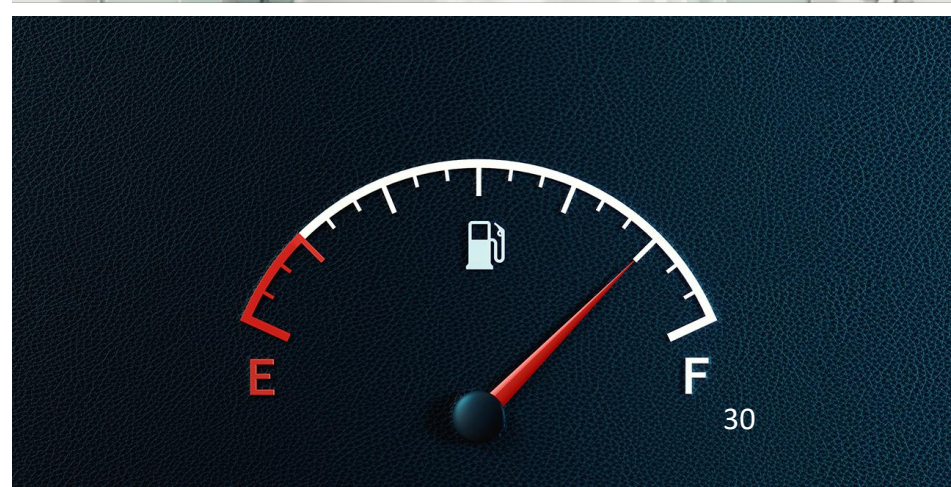
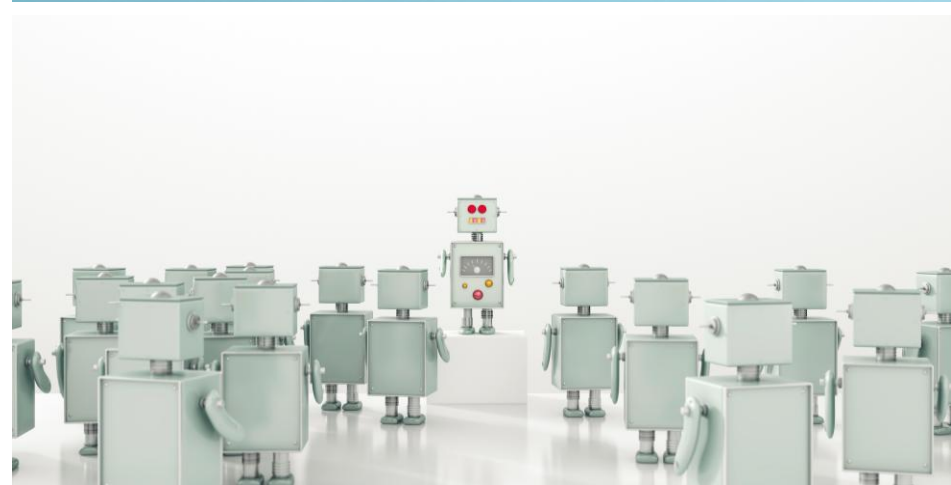
- **Project Management**
- **Marketing**
- **Nursing**
- **Finance**
- **Auditing**





## Top 5 Software Skills

- Microsoft Office (e.g., Excel, and PowerPoint)
- Programming Language (e.g., SQL, Python, and R)
- Salesforce
- Amazon Web Services
- Dashboard





## **Top 5 Soft Skills Morris County, 2024**

- **Communication**
- **Customer Service**
- **Management**
- **Sales**
- **Leadership**







## Top 5 Certificates

- **Valid Driver's License**
- **Registered Nurse (RN)**
- **Basic Life Support (BLS) Certification**
- **Master Of Business Administration (MBA)**
- **Cardiopulmonary Resuscitation (CPR) Certification**

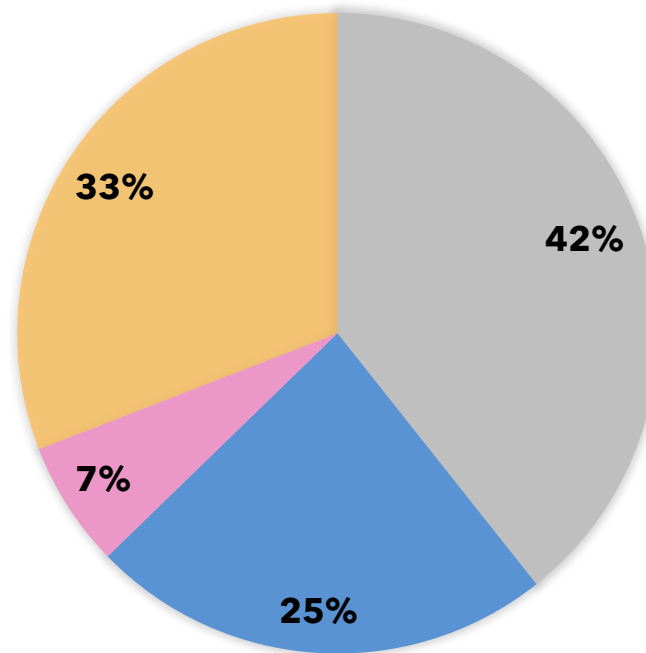




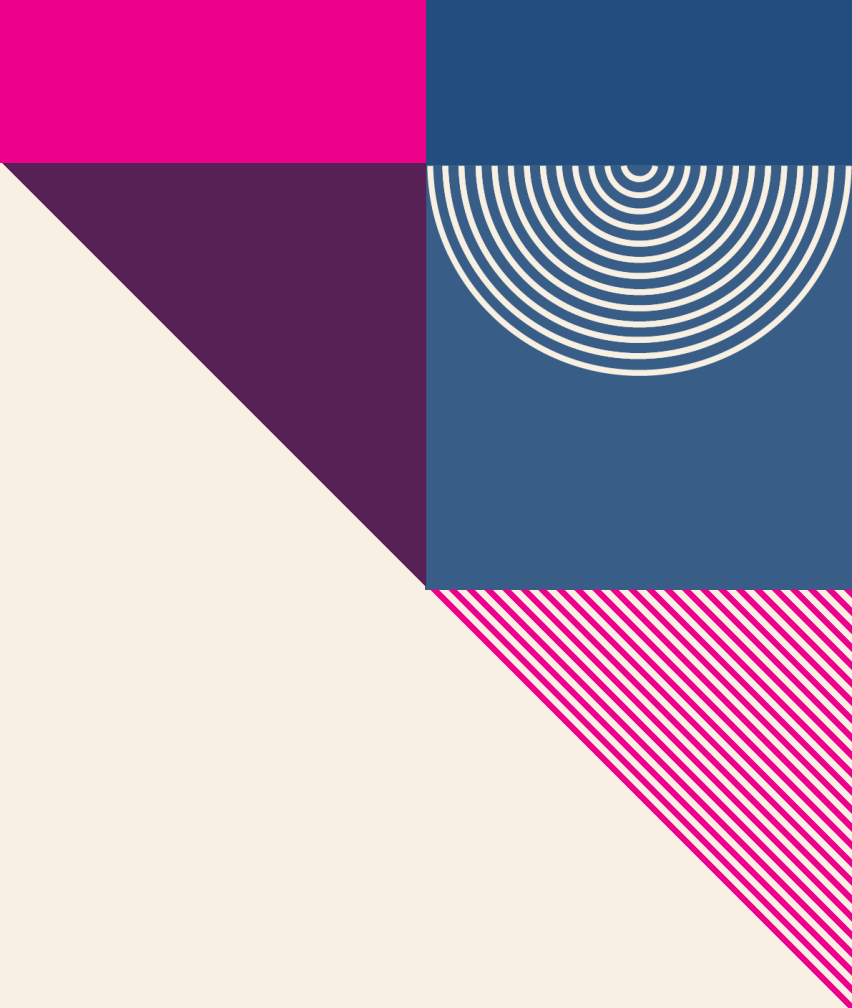
**33% of all job postings in Morris County require a bachelor's degree or higher.**

**Job Postings by Educational Attainment  
Morris County, 2024**

■ No education listed ■ High school or GED ■ Associate's degree ■ Bachelor's degree or higher



*Note:* Bachelor's degree or higher includes Bachelor's Degree, Master, Ph.D. or Professional Degree. While 42% of job postings did not specify educational attainment, this does not necessarily mean there are no requirements for it.



# AI-related Job Postings

## Morris County vs. New Jersey

Source: Lightcast

To identify AI-related job postings, ORI-EDR compiled a curated list of 130 specific terms. A job listing is deemed AI-related if any of these terms appear in the skills section. A job listing is classified as AI-related if any of these terms are present in the skills section. This includes, but is not limited to, terms such as "AI/ML Inference," "Conversational AI," "Machine Learning Algorithms," "Supervised Learning," and "Deep Learning."

Limitations: One job posting does not necessarily equal one actual job opening. Some companies may post jobs to signal growth to investors or advertise positions in multiple states. Additionally, a decline in job postings doesn't always indicate reduced demand; it could simply mean that companies have already filled their positions and are no longer actively recruiting. We treat this data as directional, offering insights into employer demand rather than exact measurements.

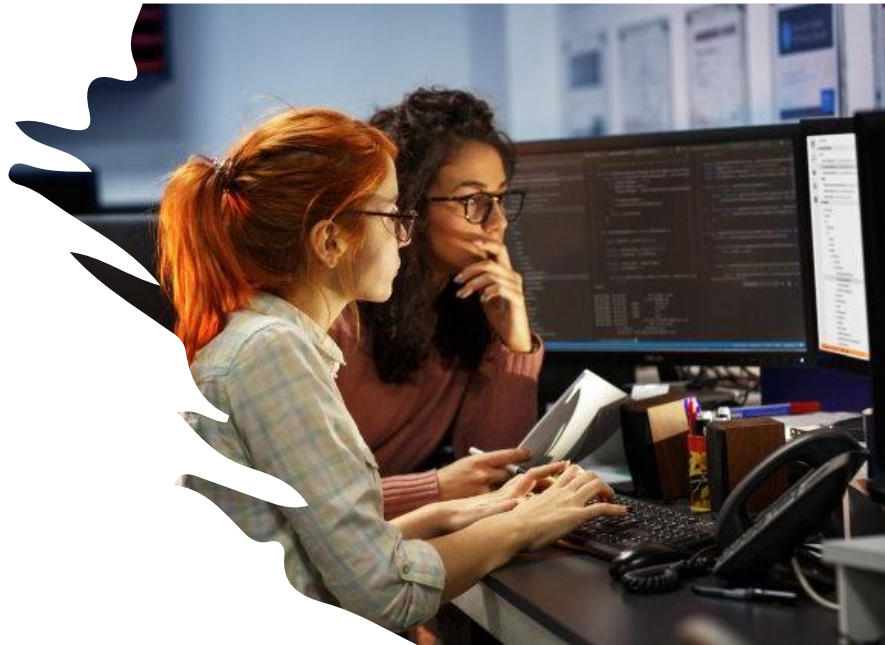
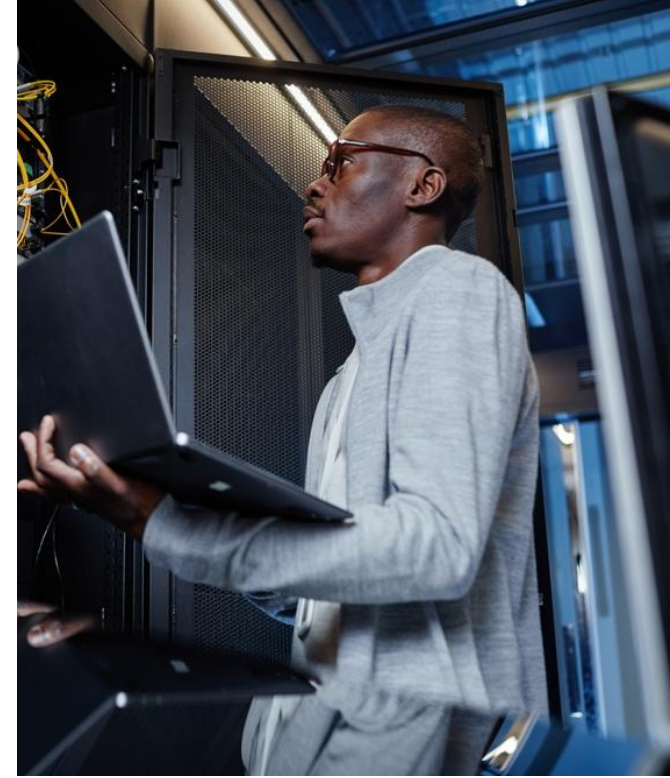


## Top 5 AI-related Hiring Companies Morris County, 2024

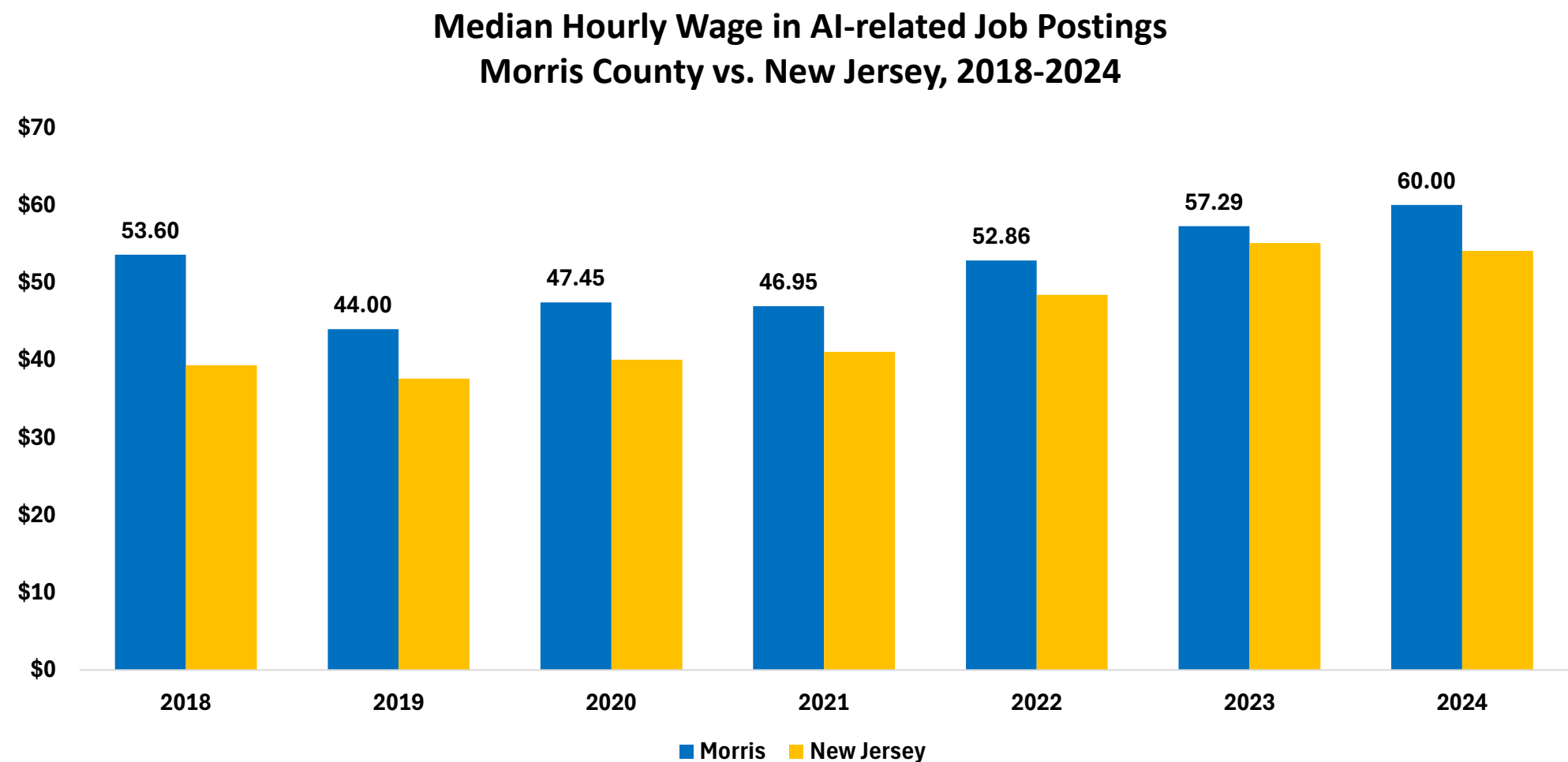
- Accenture
- Deloitte
- Novartis
- PricewaterhouseCoopers
- Barclays

# Top 5 AI-related Occupations Morris County, 2024

- Software Developers
- Project Management Specialists
- Marketing Managers
- Computer Occupations
- Medical and Health Services Managers




In Morris County, the median hourly wage for AI-related job postings is higher than the state average.





# TAKEAWAYS


- 
- **Key Economic and Workforce Insights: Morris County**
    - **Demographics**
      - Morris County's population is older and less diverse than the New Jersey average.
      - Morris County's education level is comparable to the state overall, but the proportion of residents with a bachelor's degree or higher is 8.1 percentage points higher than the state average.
    - **Regional Variation**
      - There are differences in economic and housing characteristics across Morris County's municipalities.






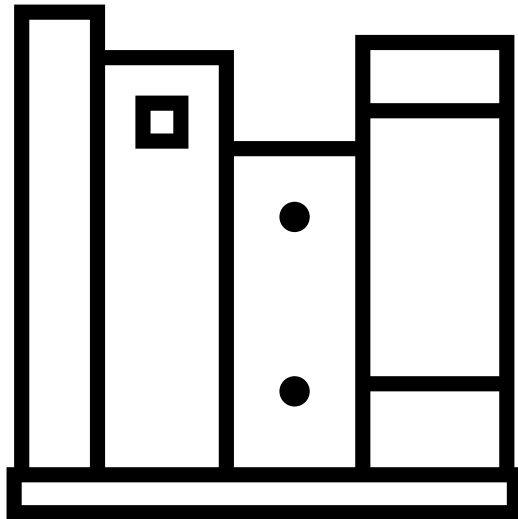
- **Key Economic and Workforce Insights: Morris County (Continued)**
  - **Industry Composition**
    - Nearly 15% of business establishments are in health care and social assistance.
    - Professional and technical services have higher employment shares in Morris County compared to state average.



- 
- **Key Economic and Workforce Insights: Morris County (Continued)**
    - **Occupational Demand in the County**
      - **Top Projected Occupations by 2032**
        - Computer and Mathematical
        - Management
        - Healthcare Support
        - Transportation and Material Moving
        - Food Preparation and Serving Related

- 
- **Key Economic and Workforce Insights: Morris County (Continued)**
    - **Occupational Demand in the County**
      - **Top Occupations by Job Postings**
        - Registered Nurses
        - Retail Salespersons
        - Software Developers
        - Medical and Health Services Managers
        - Computer Occupations

# 2025 Report Overview and Subscription Information



This report was prepared by the Office of Research and Information, Division of Economic & Demographic Research. This division collects and disseminates vital data on employers, employees, and population demographics.

# 2025-2026 NJDOL PUBLICATIONS

- [Real-Time Insights: Analysis of Job Posting Data in New Jersey for 2025](#) (January 2026)
- [Identifying and Tracking Emerging Occupations in New Jersey's Key Sectors](#) (January 2026)
- [New Jersey's Manufacturing Sector](#) (Winter 2025)
- [County Brief: Labor Market Facts](#) (December 2025)
- [Labor Market Spotlight - Celebrating New Jersey's Veterans](#) (Issue No. 28, Volume 3: November 2025)
- [Labor Market Spotlight - New Jersey's Waterways Help Keep the Economy Flowing](#) (Issue No. 27, Volume 3: October 2025)
- [New Jersey Employment Situation](#) (September 2025)
- [Job Openings and Labor Turnover Survey \(JOLTS\)](#) (August 2025)
- [New Jersey Building Permits](#) (August 2025)
- [New Jersey's Life Sciences Sector](#) (Fall 2025)
- [Labor Market Spotlight - The Industries Powering New Jersey's Special Moments](#) (Issue No. 26, Volume 3: August 2025)
- [New Jersey's Health Care Sector](#) (June 2025)
- [New Jersey Business Employment Dynamics](#) (May 2025)
- [Survey of Occupational Injuries and Illnesses \(SOII\)](#) (April 2025)
- [Labor Market Spotlight - Fortune 500 Companies](#) (Issue No. 25, Volume 3: March 2025)
- [Labor Market Spotlight - Young Adult Workforce](#) (Issue No. 24, Volume 3: January 2025)

# JOIN OUR LIST

Link: [nj.gov/labor/subscribetoori](https://nj.gov/labor/subscribetoori)





**THANK YOU!**



# APPENDIX



**Actual and Projected Employment by Occupation Group, Morris County**  
**Top 15 Occupations ranked by 2032 Employment Projections**

<b>Occupational Group</b>	<b>2022 Actual</b>	<b>2032 Projected</b>	<b>Net Change</b>	<b>Percent Change</b>
<b>Computer and Mathematical</b>	17,800	20,500	2,700	15.0%
<b>Management</b>	29,650	32,000	2,350	7.8%
<b>Healthcare Practitioners and Technical</b>	18,950	20,900	1,950	10.2%
<b>Healthcare Support</b>	12,450	14,300	1,850	14.7%
<b>Personal Care and Service</b>	11,300	13,050	1,750	15.5%
<b>Transportation and Material Moving</b>	29,550	31,200	1,650	5.6%
<b>Food Preparation and Serving Related</b>	18,600	20,150	1,550	8.5%
<b>Business and Financial Operations</b>	29,000	30,450	1,450	5.0%
<b>Educational Instruction and Library</b>	18,050	18,800	750	4.2%
<b>Installation, Maintenance, and Repair</b>	10,750	11,300	550	4.9%
<b>Building and Grounds Cleaning and Maintenance</b>	12,250	12,750	500	4.1%
<b>Community and Social Service</b>	4,200	4,650	450	9.9%
<b>Life, Physical, and Social Science</b>	4,600	4,950	350	7.2%
<b>Legal</b>	4,700	5,000	300	6.0%
<b>Arts, Design, Entertainment, Sports, and Media</b>	6,000	6,300	300	4.8%

## Morris County Establishments, Ranked by Percent of the Total Establishments Private Ownerships

Industry	Total Number of Establishments	Total Number of Employees	% of Total Establishments
Health Care and Social Assistance	2,668	44,467	15.1%
Professional and Technical Services	2,518	39,724	14.2%
Other Services, Ex. Public Admin	1,639	10,888	9.3%
Retail Trade	1,567	27,125	8.9%
Construction	1,482	12,188	8.4%
Administrative and Waste Services	1,354	23,802	7.7%
Accommodation and Food Services	1,321	20,989	7.5%
Finance and Insurance	942	17,958	5.3%
Wholesale Trade	900	13,574	5.1%
Unclassified	710	842	4.0%
Manufacturing	612	18,144	3.5%
Real Estate and Rental and Leasing	580	4,093	3.3%
Transportation and Warehousing	366	8,370	2.1%
Educational Services	311	6,729	1.8%
Information	235	3,198	1.3%

*Note:* An establishment is considered unknown when there is insufficient detail to accurately determine its primary industry at that location. It will be assigned an industry code once the program can verify its main business activity.