



NEW JERSEY

# Business Employment Dynamics



Office of Research  
and Information

# Introduction

- Business Employment Dynamics (BED) provide a snapshot of the dynamic state of New Jersey's labor market by capturing the full scope of job movement, beyond simple net changes.
- The data from BED provides a breakdown of employment changes by economic activity, illustrating where jobs are being added through business openings and expansions, as well as where they are being lost due to closures and contractions.
- By tracking the underlying flow of job gains and losses, BED helps uncover key trends and signals that point to the forces driving economic growth or decline.

# BUSINESS EMPLOYMENT DYNAMICS

- **OVERVIEW**

Statistical data series showing gross job gains and losses

- **AVAILABILITY**

Annual and quarterly data from 1993 onward

- **SOURCE**

Bureau of Labor Statistics Quarterly Census of Employment and Wages program

- For more, visit

[bls.gov/opub/hom/bdm/home.htm](https://bls.gov/opub/hom/bdm/home.htm)

# GLOSSARY: **ESTABLISHMENTS**

- Establishments are entities that operate at a single location and engage in a primary economic activity.





# GLOSSARY:

## JOB GAINS

- Establishment added jobs compared to the previous quarter.

### **Expansions:**

- Already-operating establishments with a net increase in employment from one quarter to the next.

### **Openings:**

- Establishment reported no employment in the previous quarter but has employment this quarter.

# GLOSSARY:

## JOB LOSSES

- Establishment lost jobs compared to previous quarter

### Contractions

- Establishments with a net decrease in employment from one quarter to the next but are still operating.

### Closings

- Establishments that had employment in the previous quarter but have no employment this quarter.



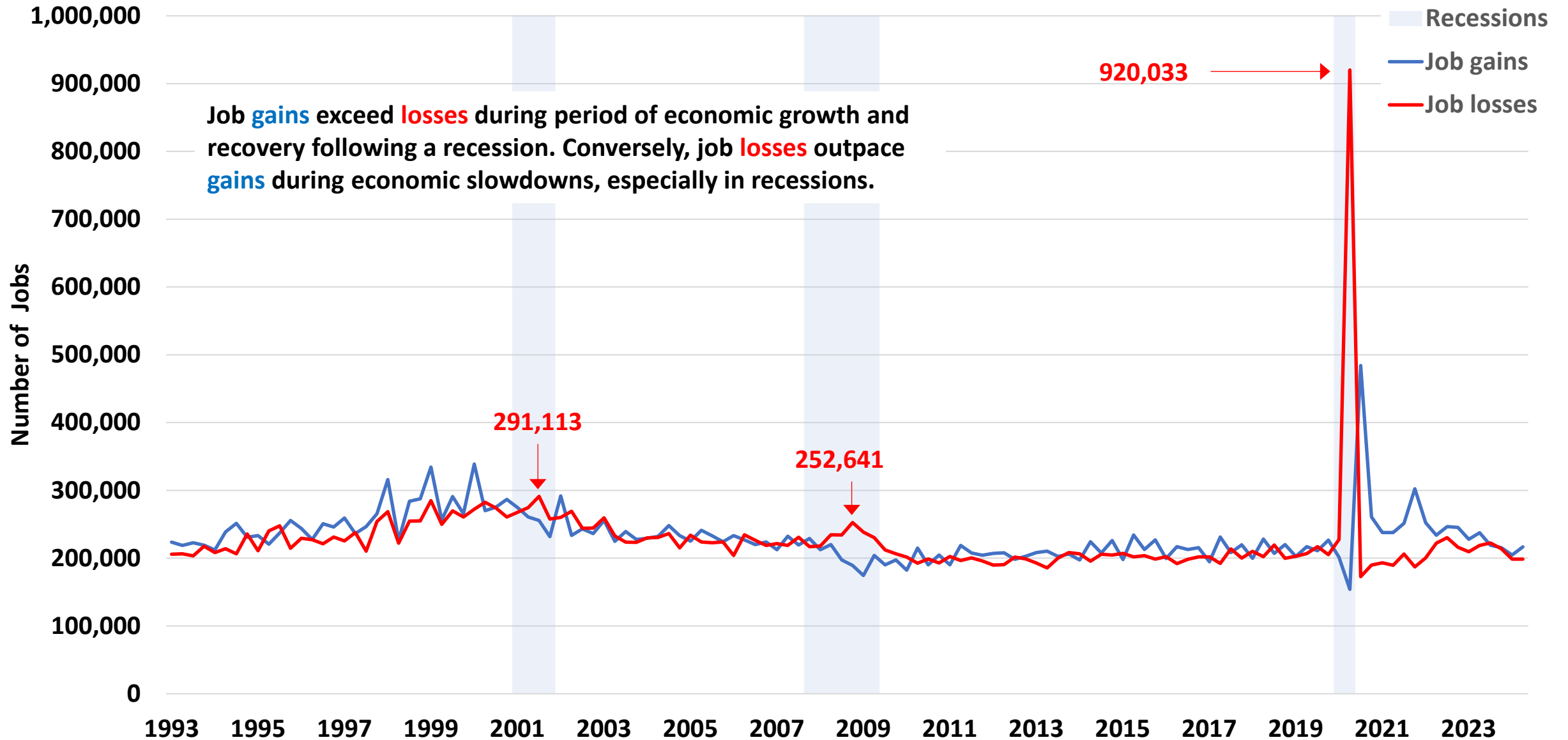


# JOB GAINS AND LOSSES

in New Jersey

# New Jersey Job Flows

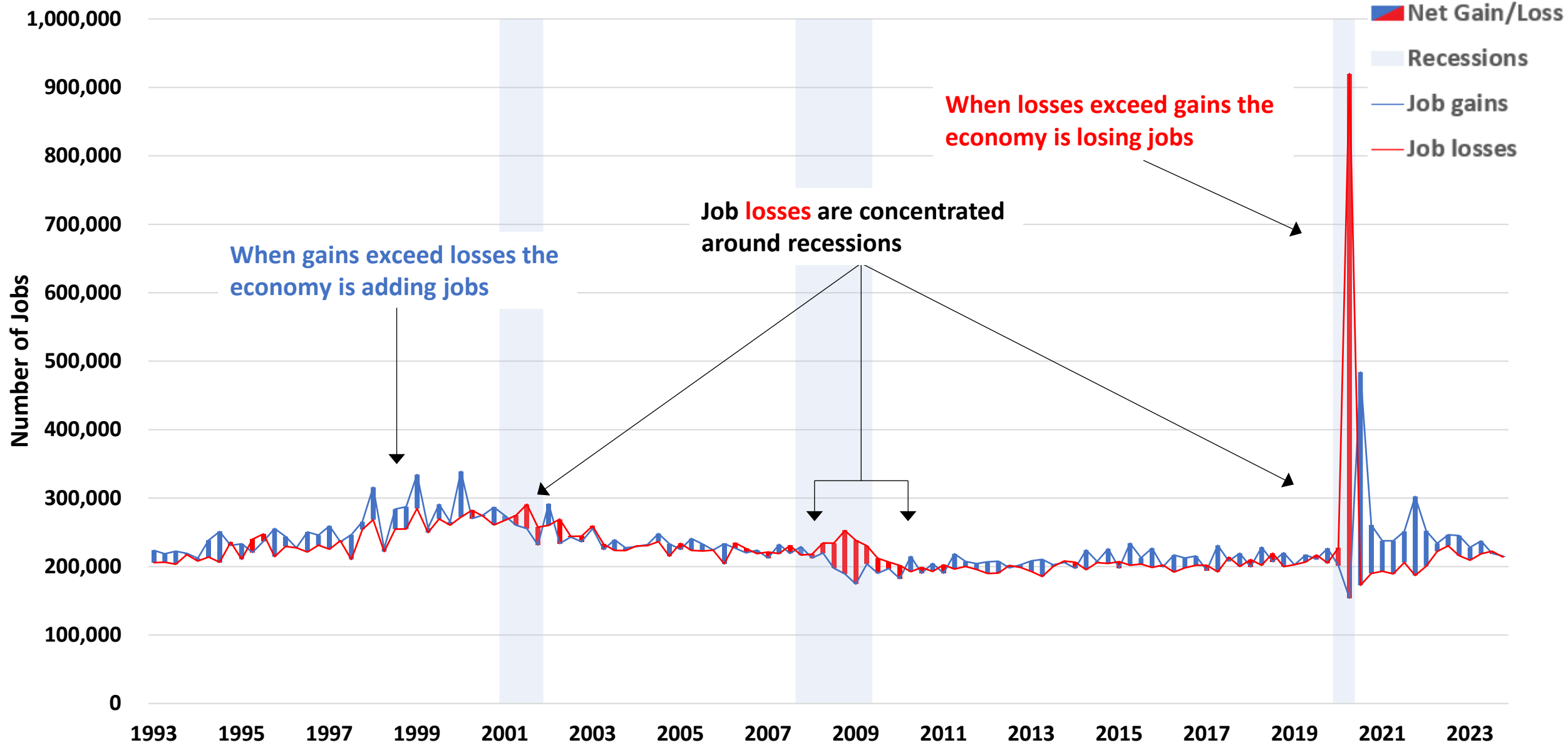
Gross job gains and losses



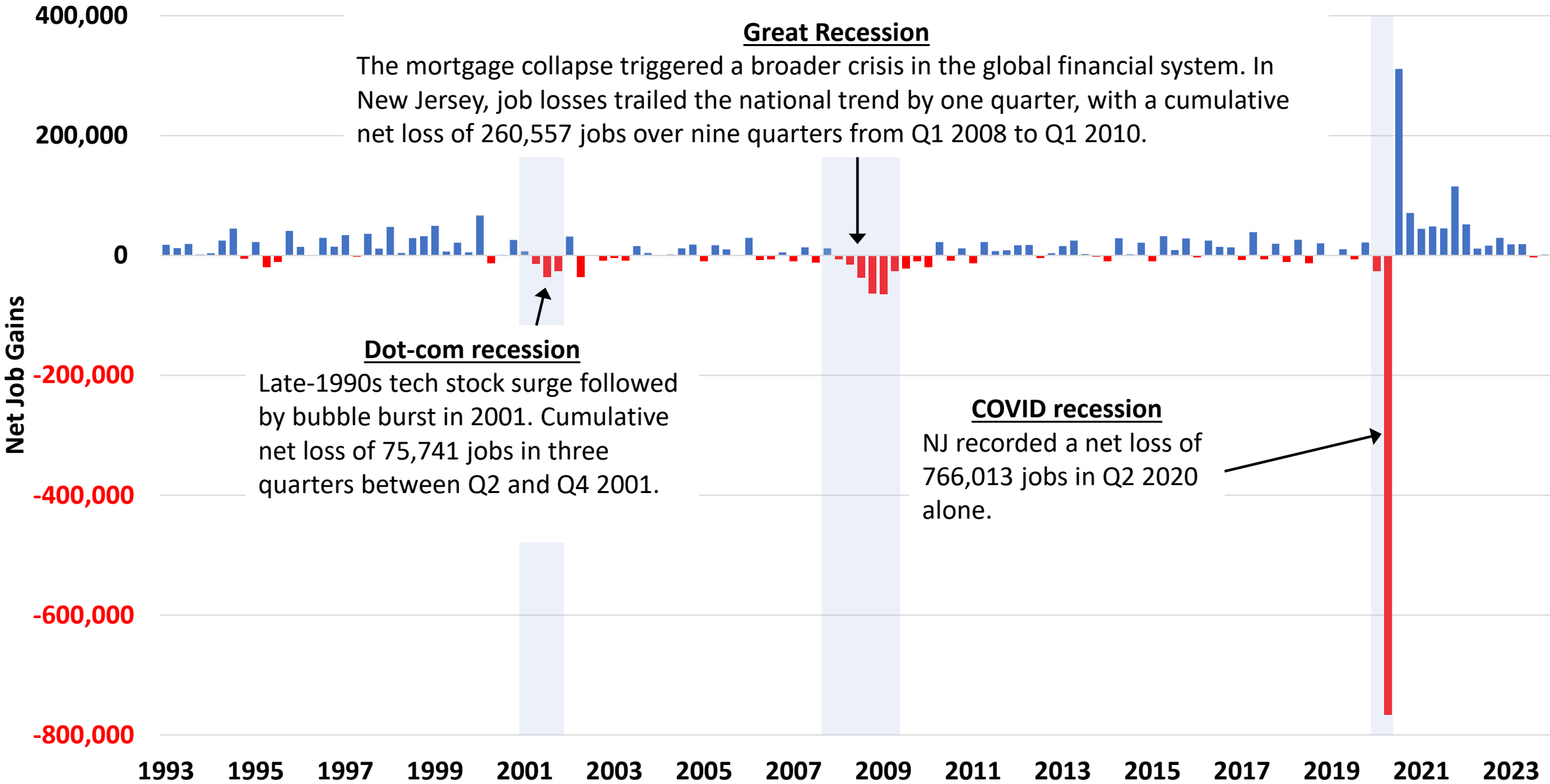


# Job Flows

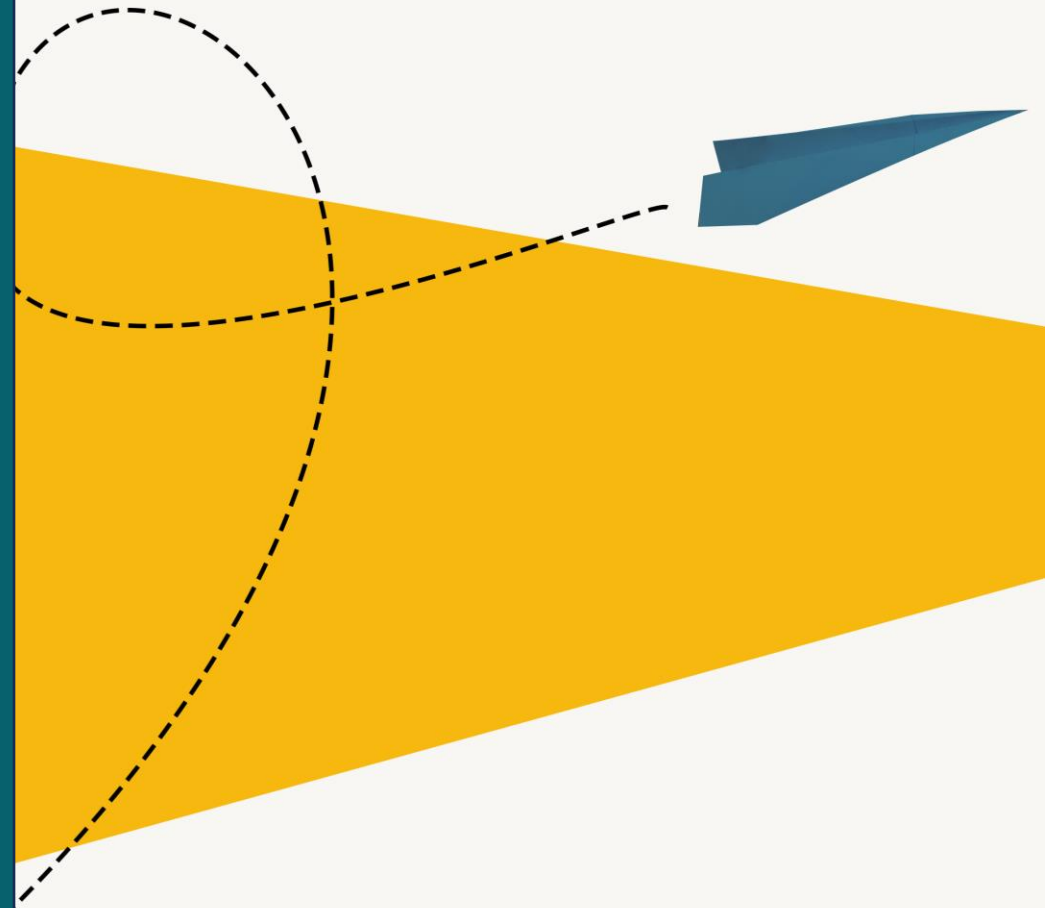
## State of the NJ Economy



# The Impact of Recessions on Net Job Flows

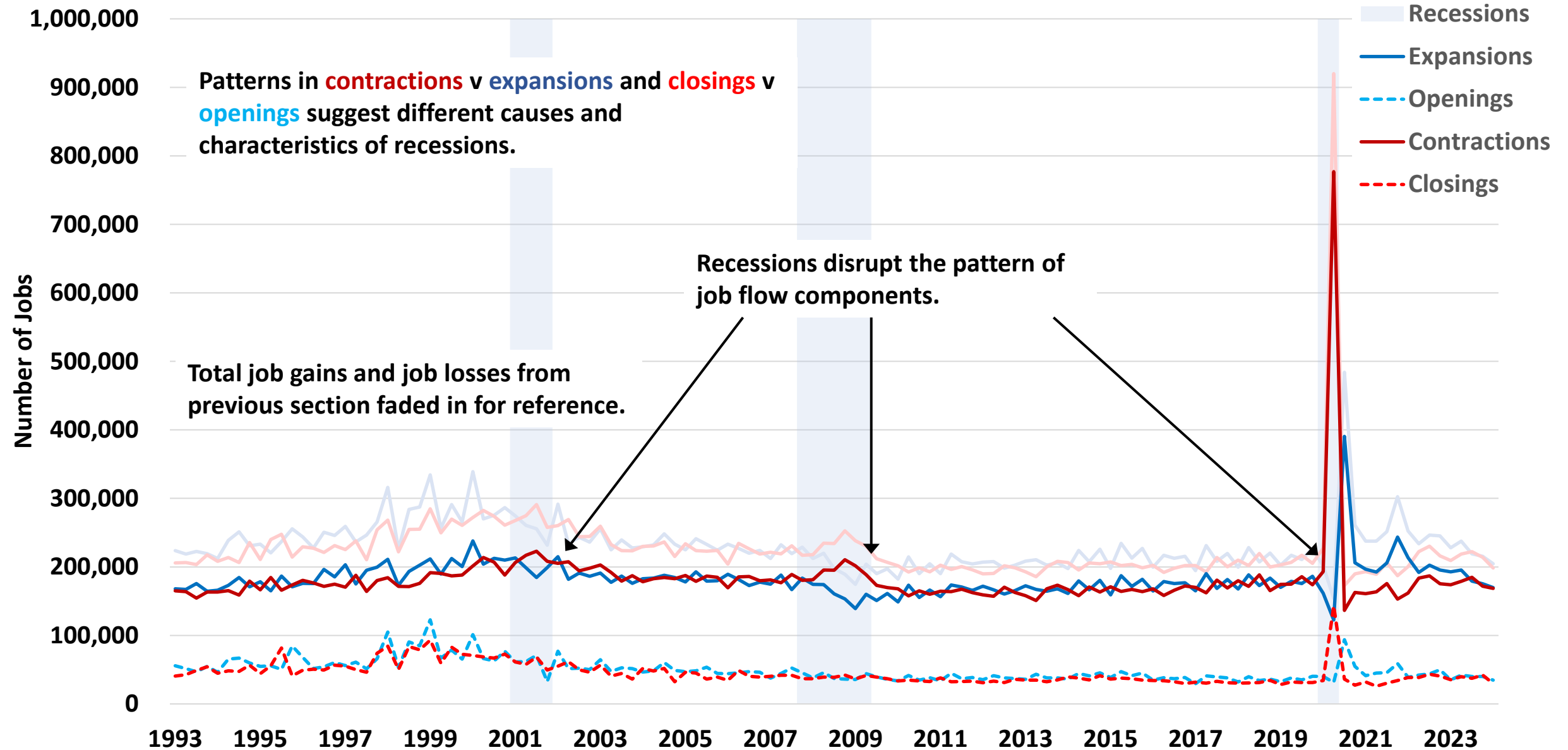


# COMPONENTS *of* JOB FLOW DYNAMICS in New Jersey

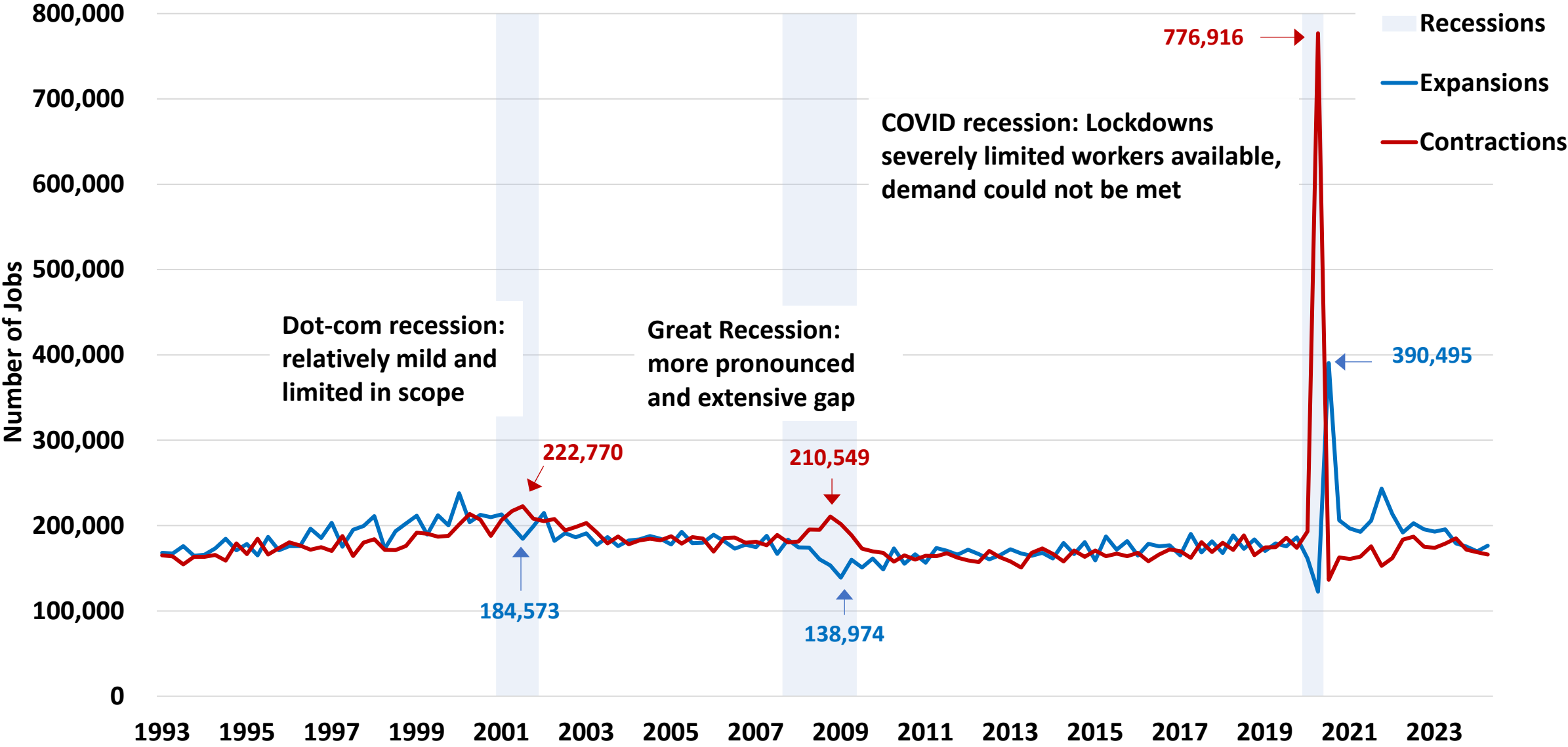


# New Jersey Job Flows

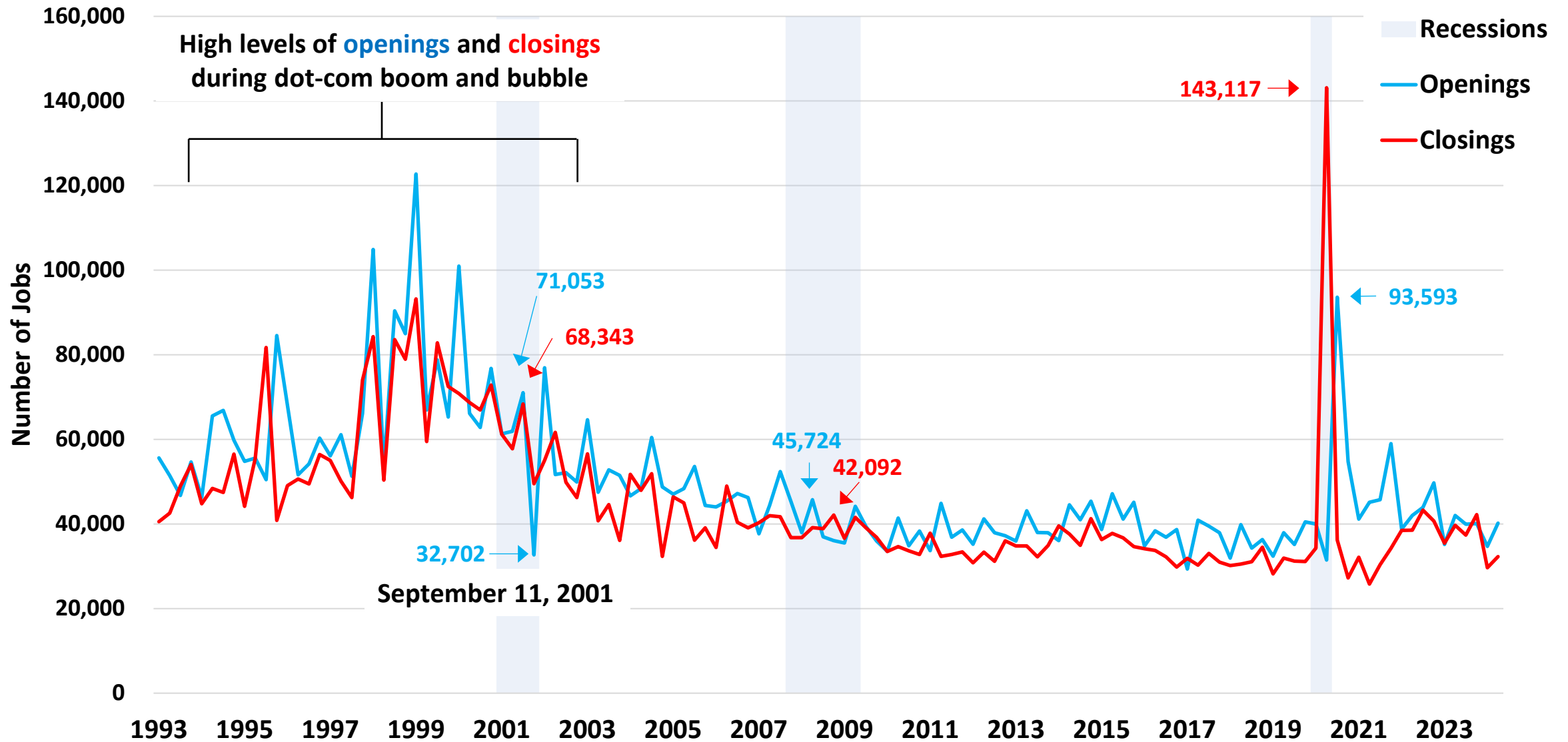
Breakdown of gross job gains and losses



# Expansions and Contractions Characteristics in New Jersey

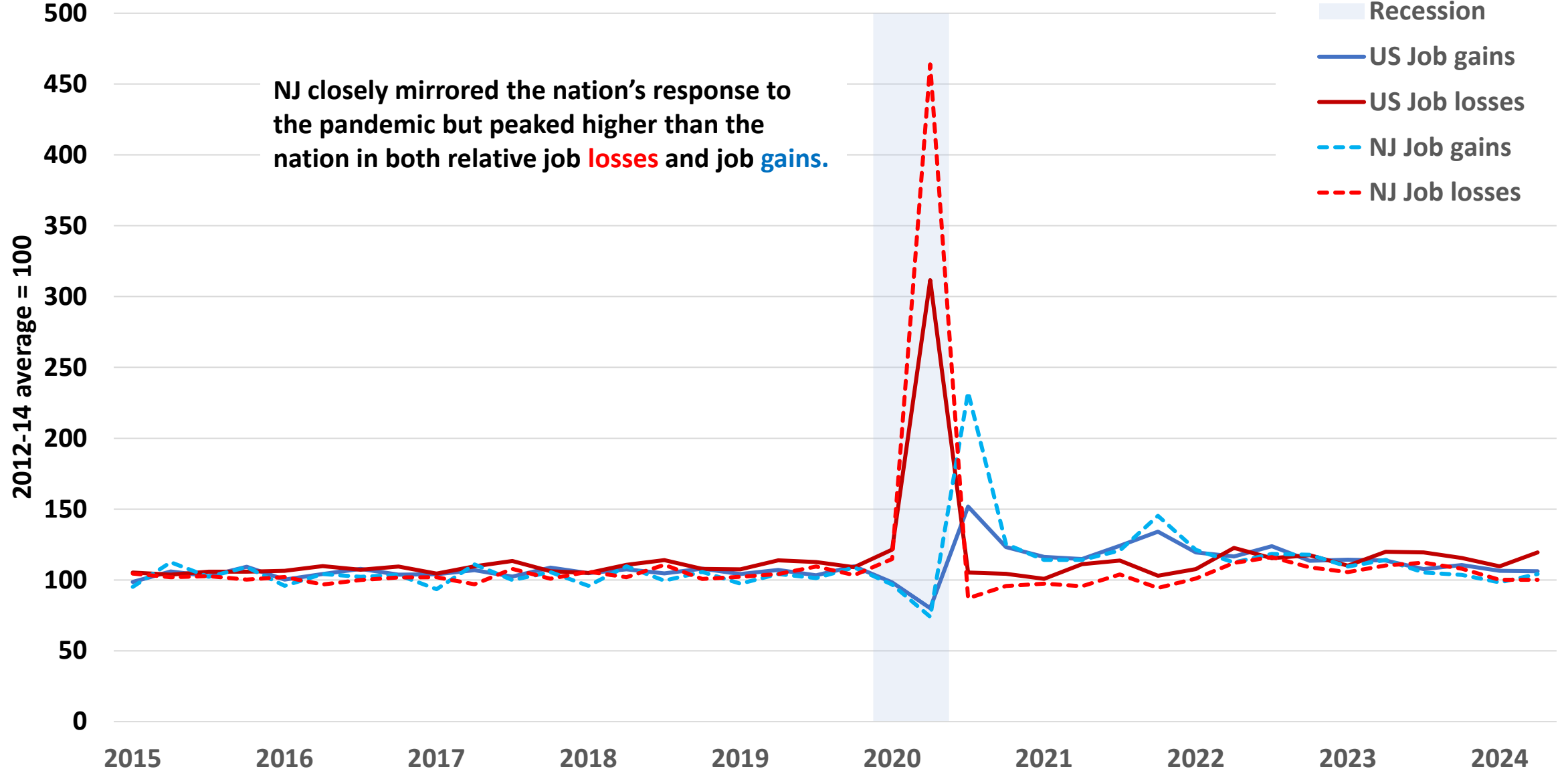


# Openings and Closings Characteristics in New Jersey



# US and NJ Job Flows

## Effects of the COVID recession



# SUMMARY

- A single figure of net job gains or losses only tells some of the story.
- Examining the flows of job gains and losses themselves can reveal insights into the job market and wider economic trends.
- Different behaviors in job flow dynamics can reflect differing circumstances in job market conditions and the economic circumstances behind them.





# 2025 REPORT OVERVIEW

This report was prepared by the Office of Research and Information, Division of Economic & Demographic Research. This division collects and disseminates vital data on employers, employees, and population demographics.

## JOIN OUR LIST!

**Link:** [nj.gov/labor/subscribetoori](https://nj.gov/labor/subscribetoori)

